



Waterloo Region  
District School Board

Public Engagement Meeting  
for  
**New West Waterloo  
Elementary School**

Wednesday November 12, 2014

# Agenda

Time: 7:00 – 8:30 p.m.

1.	Welcome, Introductions and Purpose of Meeting	Ian Gaudet WRDSB, Controller of Facility Services
2.	Background	
3.	Design and Approval Process	
4.	Design Presentation	
5.	Comments, Feedback and Questions	
6.	Next Steps	
7.	Adjournment	

# Purpose of Meeting

- An Information night as per the Public Engagement Strategy of the School Board
- To share information about the design and approval process and the preliminary design for the new West Waterloo Elementary School with the community.
- To receive comments and feedback and respond to questions on the design.
- To help us understand what is important to the school community

# Background

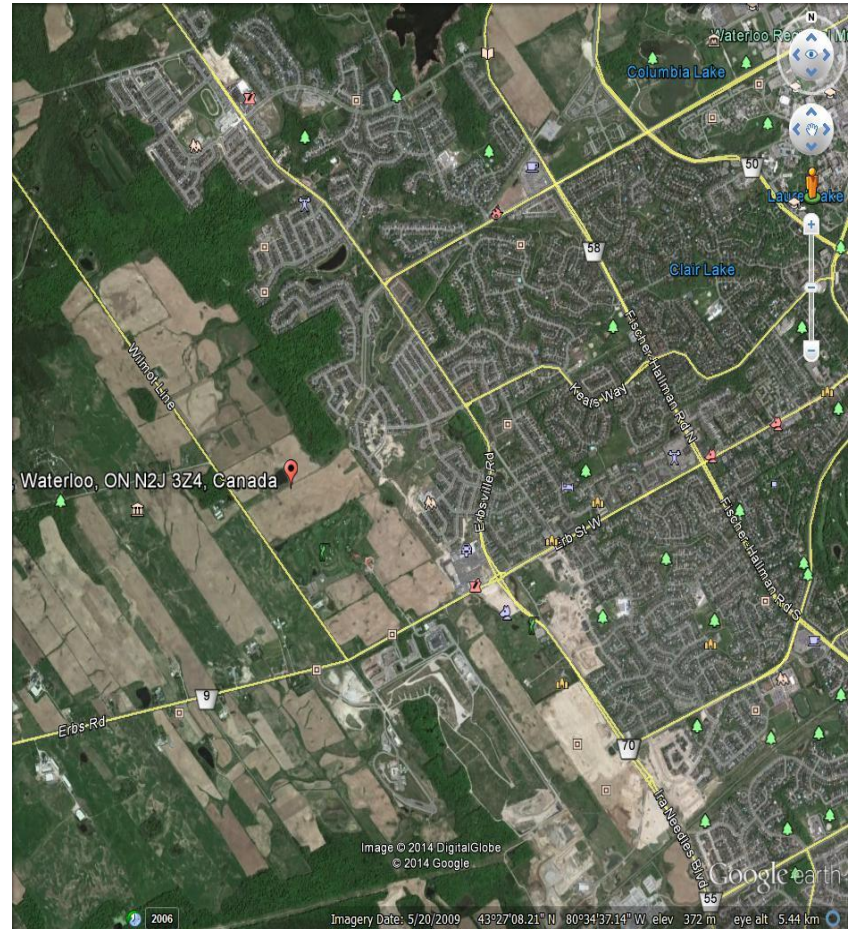
- *6 acre site set aside in Columbia Hills District Plan in 1996.*
- *“Vista Hills”, comprised of 3 large land parcels = 327 acres of land = 1,650 units = an estimated population of 4,500 persons.*
- *Combined with the Clair Hills and Columbia Forest Districts (the Edna Staebler Public School service area), = 4,600 residential units and population exceeding 10,000.*
- *The community planning process moved the site southerly to its present location, adjacent City of Waterloo park, strategic hub in the overall community’s design.*
- *2006 EDC study saw purchase of site in 2010 for a 2012 school opening; economic uncertainties as well as OMB appeals caused delays*
- *Site for long-term sustainable student needs to offload Edna Staebler which exceeded its capacity by 2012.*
- *Now considering a larger JK to 8 school to open around September of 2016.*

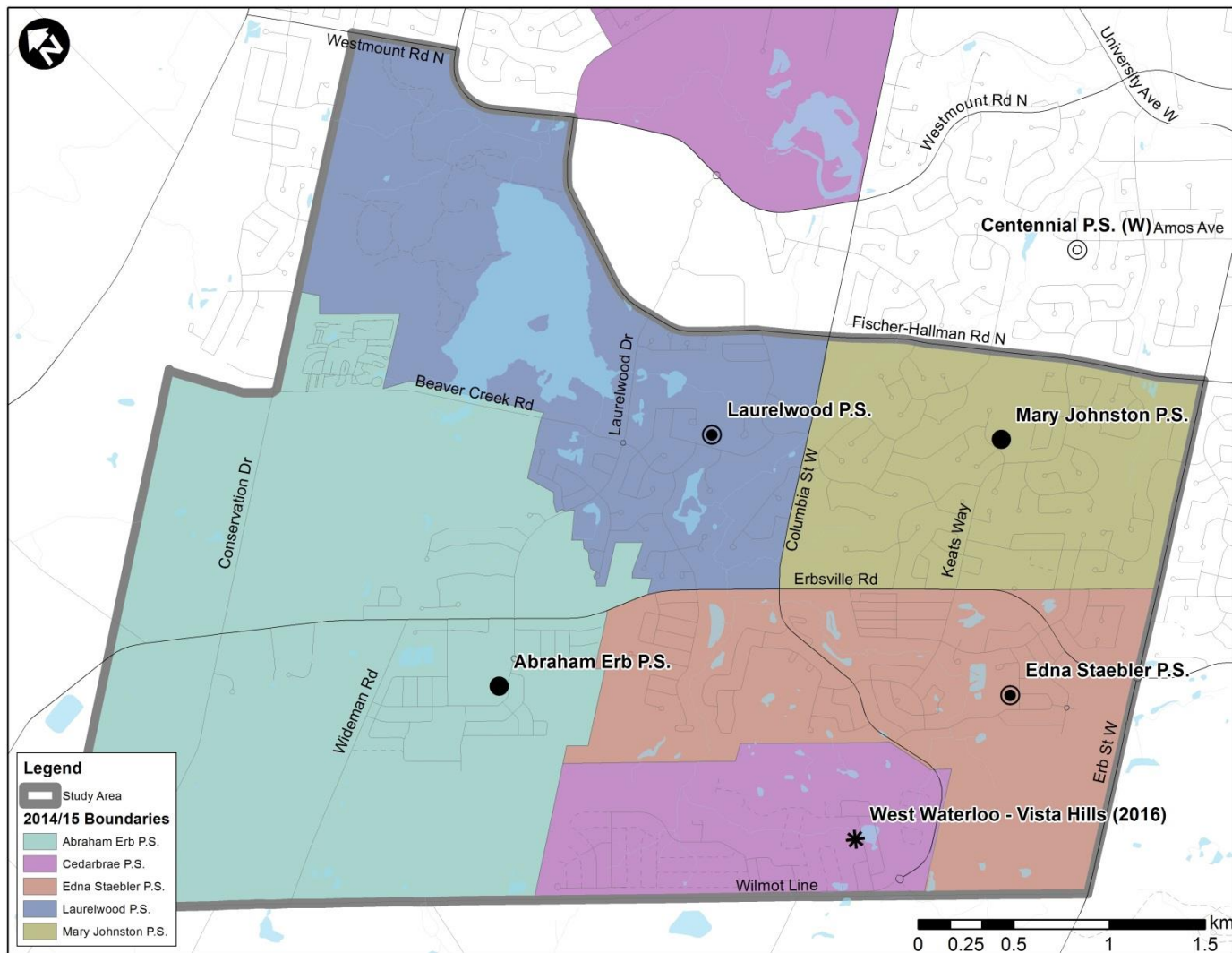


# Background

## Enrolment Pressure:

- enrolment pressure from new housing development in the extreme west side of Waterloo has made it necessary to build a new public elementary school in the Vista Hills community.





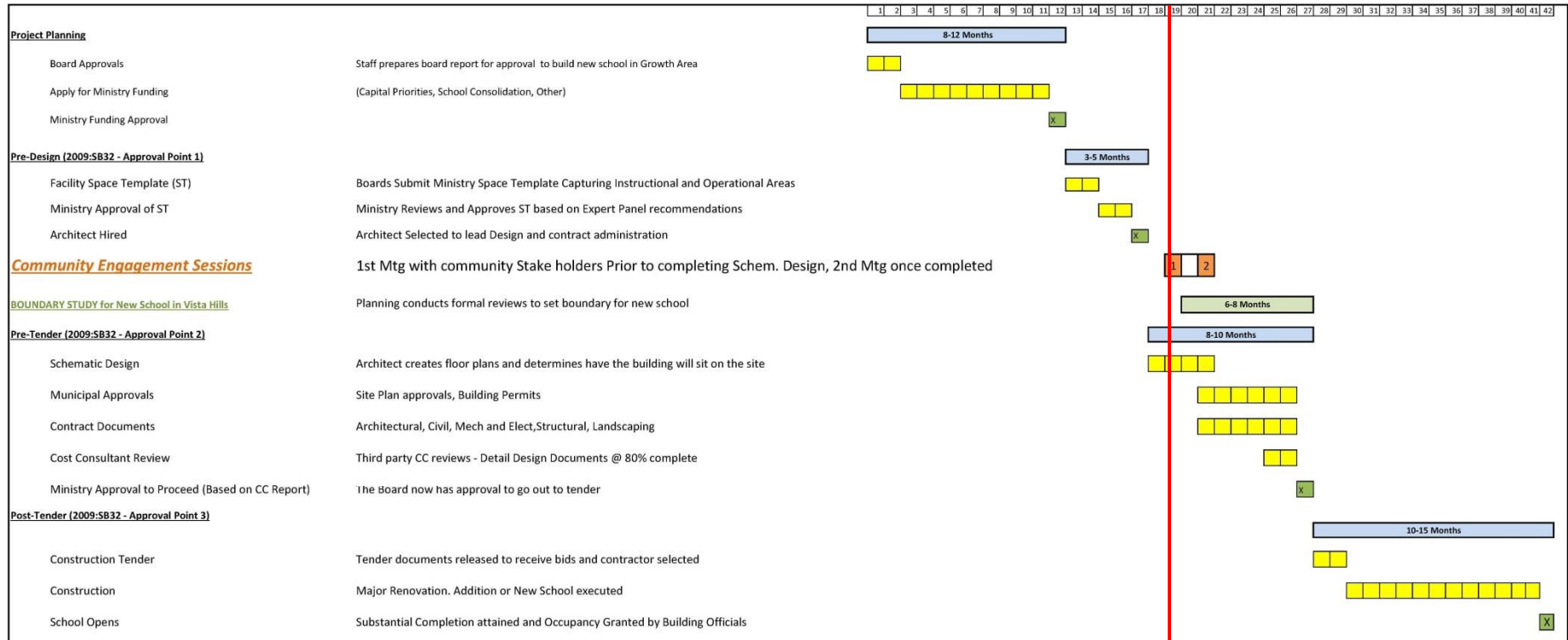
## 2014/2015 School Boundaries New West Waterloo Elementary School

# Design Process

- The architect has prepared a preliminary schematic design for the new school.
- The preliminary design is being presented to the public tonight for information purposes and to obtain feedback on the design.
- The design will be fully developed and presented to the public again early in the new year.
- The design will be finalized, contract documents produced, cost estimates obtained and all will be sent to the Ministry of Education for final approval prior to tender in the early spring of 2015.
- Construction is scheduled to begin in May/June of 2015 and the new facility is scheduled to open for school September 1, 2016.

# Project Schedule

## New Elementary School in Vista Hills Area Community Engagement Planning Document Facility Services



**New West Waterloo Elementary School**

# Ministry of Education Application for Approval of New School Facility

## ELEMENTARY SCHOOL SPACE TEMPLATE

Vista Hills Public School (646 drives 108.8 sf/student)

<b>School Board:</b>	Waterloo Region District School Board
<b>Grade Range:</b>	JK to 8
<b>Program:</b>	English
<b>School Name:</b>	Vista Hills Public School (646 drives 108.8 sf/student)

Instructional Space	#	Size		Floor Area		Load	OTG
		m <sup>2</sup>	ft <sup>2</sup>	m <sup>2</sup>	ft <sup>2</sup>		
1 Kindergarten	5	111	1,200	557	6,000	26	130
2 Classroom	19	69	747	1,319	14,193	23	437
3 Art Room	1	98	1,050	98	1,050	23	23
4 Science Room	1	141	1,521	141	1,521	23	23
5 Music Vocal		-		-	-	23	-
6 Computer Laboratory		-		-	-	23	-
7 Technical/Vocational		-		-	-	23	-
8 Special Education Area	1	99	1,062	99	1,062	9	9
9 Musical Instrumental	1	104	1,117	104	1,117		-
10 Resource Area - Loaded (400-699 sf)	2	43	458	85	916	12	24
11 Resource Area - Unloaded (<400 sf)	4	12	127	47	508		-
12 Gymnasium Area and Stage	2	300	3,230	600	6,460		-
13 Change Rooms	2	37	400	74	800		-
14 Library	1	300	3,230	300	3,230		-
15 General Purpose	4	44	475	177	1,900		-

<b>Total GFA and OTG of Instructional Area</b>		3,601	38,757		646
--	--	-------	--------	--	-----

Operational Space	Per Pupil		Floor Area	
	m <sup>2</sup>	ft <sup>2</sup>	m <sup>2</sup>	ft <sup>2</sup>

16 General Office	148	1,589
17 Staff Room and Teacher Work Rooms	160	1,717
18 Kitchen	10	109
19 Custodial Areas	102	1,100
20 Meeting Room	34	369
21 Academic Storage	56	601
22 Washrooms	197	2,125
23 Gymnasium Storage	74	800
24 Chair Storage (in Gymnasium)	14	146
25 Mechanical Spaces	246	2,650

<b>Total Operational Area</b>	1,041	11,206
<b>Total Instructional (from above)</b>	3,601	38,757
<b>Total Operational and Instructional</b>	4,642	49,963

26 Gross Up Added	38.0%	1,764	18,986
<b>Gross Floor Area</b>		6,406	68,949

<b>Area per Pupil</b>	9.92	106.73
-----------------------	------	--------

Community Use Rooms	m <sup>2</sup>	ft <sup>2</sup>
---------------------	----------------	-----------------

Child Care	-	
Early Years Hub	-	
Community Use	-	
Other (please identify)	-	
Other (please identify)	-	
Other (please identify)	-	
<b>Total Community Use Rooms Area</b>	-	-

<b>Total Square Feet</b>	6,406	68,949
--------------------------	-------	--------



**Design Process - J.W. Gerth Elementary  
School**

# The Site



View looking west from the Corner of Ladyslipper Drive & Sweet Gale Street

# Site Statistics

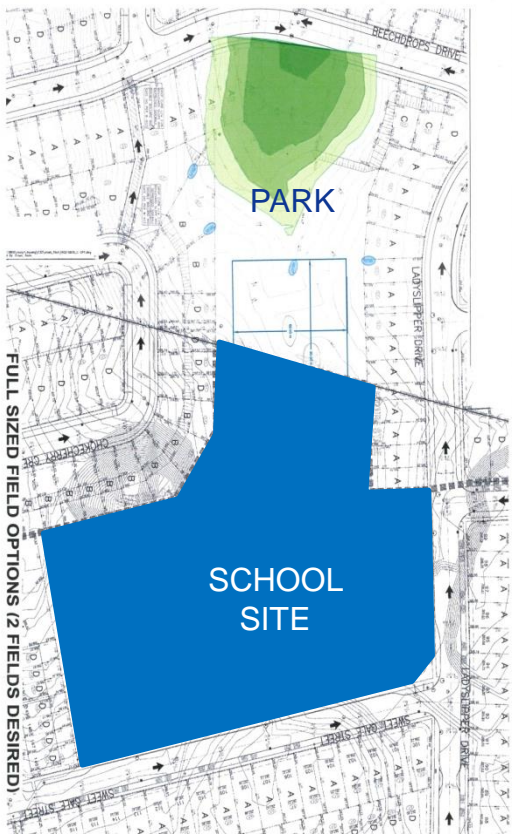
# Gross building area indicated is as per Ministry of Education target.

Areas Summary	New School
Description	Greenfield site that is relatively flat but slopes gently down to the north where it abuts the Park site and slopes more sharply up at the western edge of the property meeting the existing single family residential housing.
Site Area	24,204 m2 5.98 acres
Building Footprint	2,948m2 31,750 sq ft
Gross Building Area	6,406 m2 68,950 sq ft
Total Landscaped area	15,816m2 3.9 acres

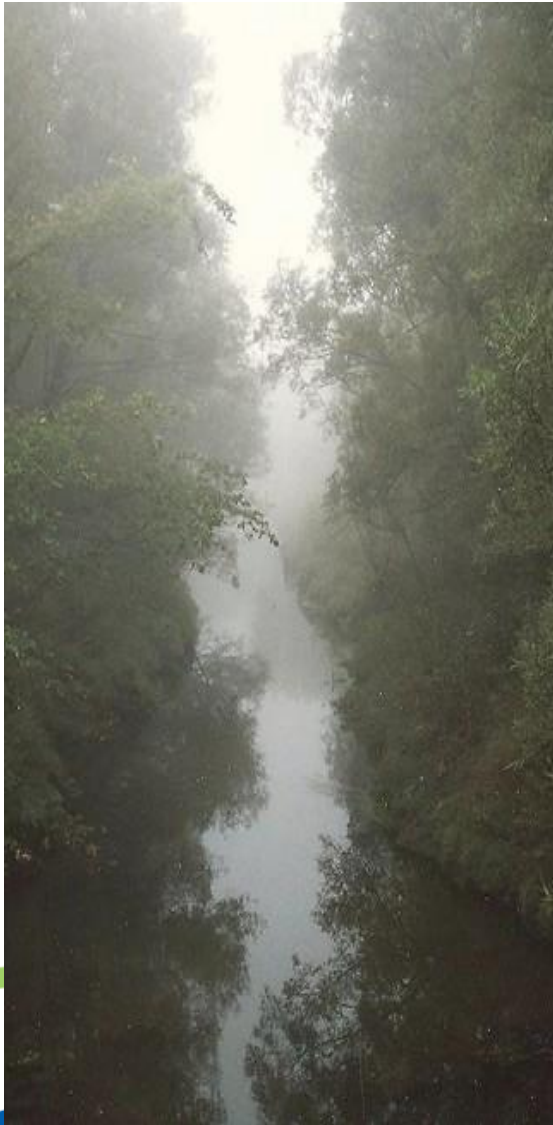
# The Vision

## The new West Waterloo Elementary School will:

- The design will be integrated with the adjacent Park
- Will utilize site for recreational purposes
- Will share the 2 sports fields with the community
- Accommodate 646 pupil places
- Accommodate grade levels FDK through Grade 8
- Provide on street drop off/pick up for parents and school bus traffic
- Be innovative in design , energy efficient and environmentally responsible
- Be fully accessible
- Be a hub for the community



# Design Themes +VG



School Identity:  
A Sense Of Place

Community Use:  
Safe, Visible & Accessible

Accommodate a Variety Of Learning Activities:  
Large-group, Small-group & Individual learners

Flexibility & Adaptability:  
Multiuse capability

Social Interaction:  
Formal & Informal opportunities

Quality Of Learning Environment:  
Comfortable, Secure; Stimulating & Fun

**New West Waterloo Elementary School**



Clear School Identity + VG





Spacious and Open Entrances + VG



Natural Light + VG



Natural Light + VG

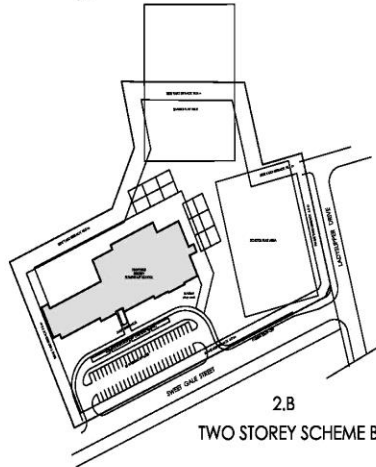
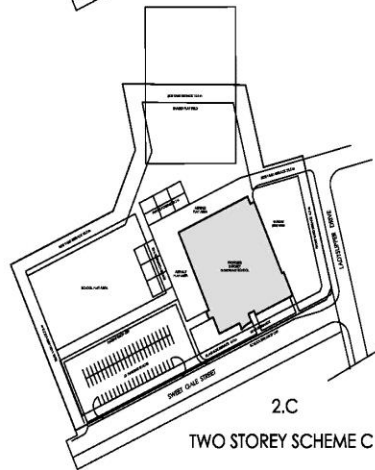
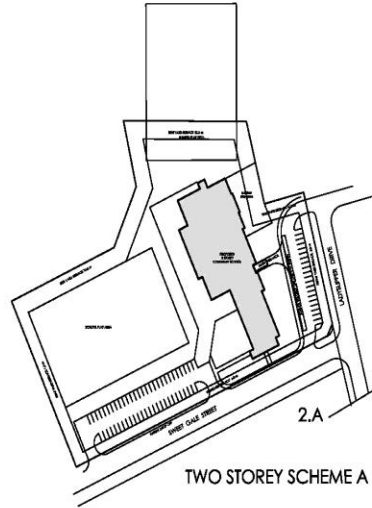
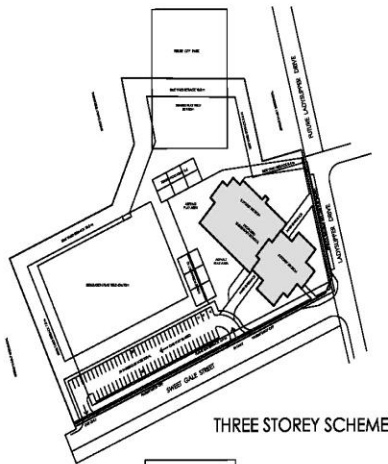


Flexible Programing + VG



Flexible Learning Environments + VG

# The Vision

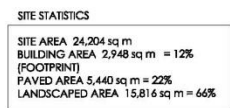


Several Options for site development have been explored including 2 and 3 storey buildings.

These options were shared with the City of Waterloo.

The City's concern is to maximize the open area & sharing of fields to increase the availability of bookable sports fields on the west side of the City.

NO.	DATE	PARTICULAR
1	14.10.16	ISSUED - CLIENT SPA REVIEW
2	14.10.29	ISSUED - PRECONSULT. SP

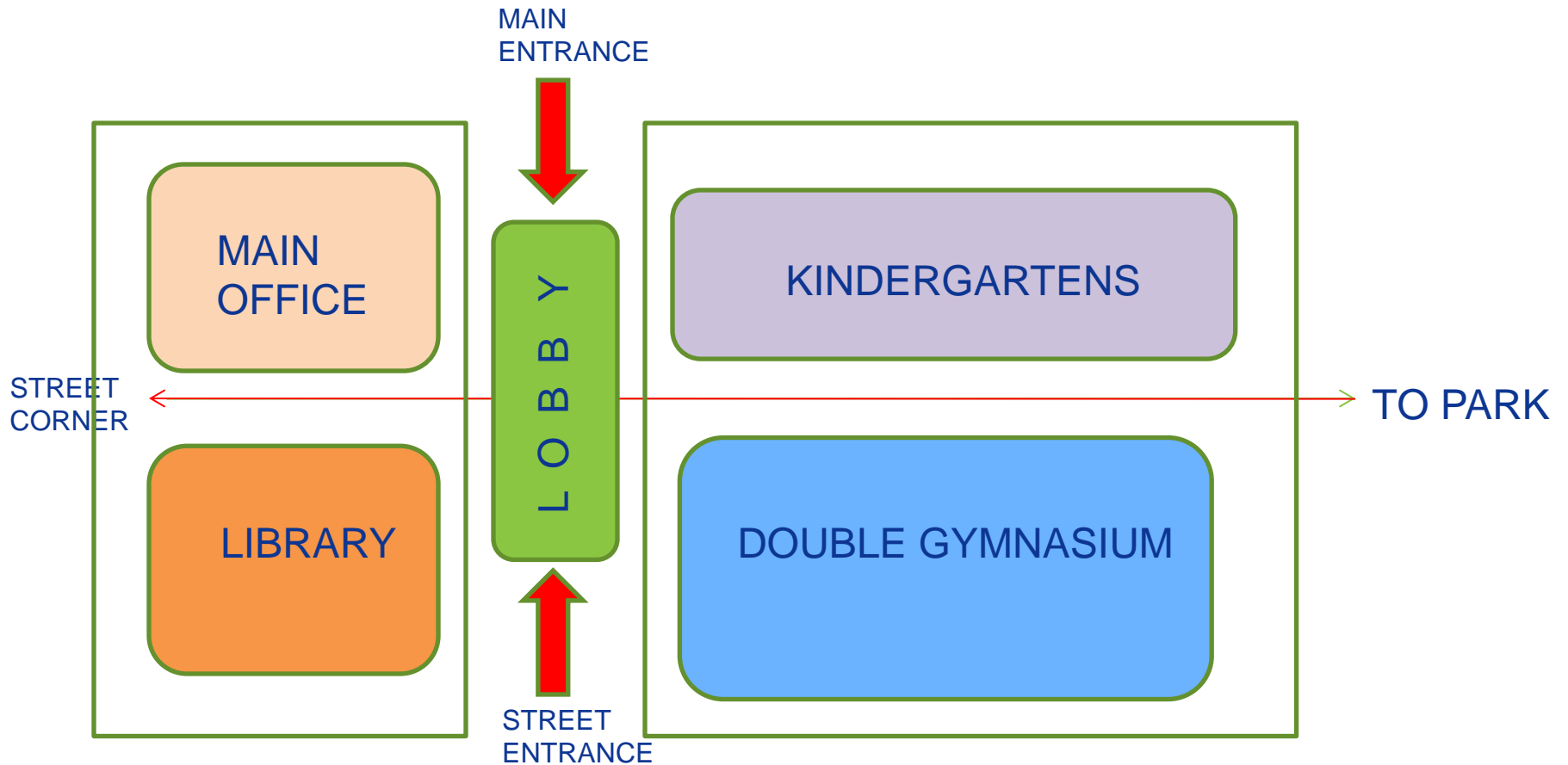


## SCALE: 1/500

**NEW WEST WATERLOO ELEMENTARY SCHOOL**  
Ladyslipper Drive & Sweet Gale St., Waterloo, Ontario  
NOVEMBER 12, 2014

For Further: *Miss. 15, 2014*. *Q.1* (Open Book, allow calculator)

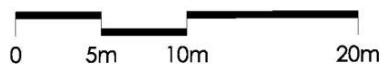
# Preliminary Schematic Design





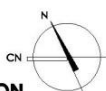
Old Date: Nov 10, 2014 - 3:03pm Per: shourtsieau  
Barcode: 1\TVC\Account\Vol\118\EL\21471\Ondash\Ondash\Vol\118\118 Nov2: 14 chn

	CLASSROOMS
	KINDERGARTEN ROOMS
	SPECIAL ED
	GYMNASIUM & STAGE
	LEARNING COMMONS
	OFFICE & STAFF ROOMS
	TEACHER PREP
	MECHANICAL ROOM
	WASHROOMS
	STORAGE & SUPPORT
	OPEN TO BELOW



## PRELIMINARY SCHEMATIC

## 2nd FLOOR PLAN



**WATERLOO REGION  
DISTRICT SCHOOL BOARD**

**NEW WEST WATERLOO ELEMENTARY SCHOOL**  
Ladyslipper Dr. and Sweet Gale St., Waterloo, Ontario.  
NOVEMBER 12, 2014.



50 Dalhousie Street  
Brantford, Ontario, Canada  
N3T 2H6  
T: 519.754.1655  
F: 519.754.0830  
[www.ventingroup.com](http://www.ventingroup.com)



# Comments, Feedback and Questions

Please feel free to ask questions. We value your feedback. If you prefer, write your questions and comments down and hand them in. There are forms available.

# Next Steps

#	Task	Timeline
1	Meet with the Public to share the preliminary school design	November 2014
2	Finalize the design for the new school	December 2014
3	Meet with Public to present the complete design	January 2015
4	Obtain the necessary City Planning approvals	November 2014 – April 2015
5	Develop Contract Documents for Tender	February - April 2015
6	Tender and Award	April 2015
7	Construction Period	May 2015 – July 2016
8	Open new West Waterloo Elementary School	September 2016

# Naming of School

New West Waterloo Elementary School

**Adjournment**

**Thank you!**