

MAY 16, 2022

**WATERLOO REGION DISTRICT SCHOOL BOARD
NOTICE AND AGENDA**

A Committee of the Whole meeting of the Waterloo Region District School Board will be held via video conference, on **Monday, May 16, 2022, at 7:00 p.m.**

AGENDA

Call to Order

O Canada

Approval of Agenda

Declarations of Pecuniary Interest

Celebrating Board Activities/Announcements

Delegations

Staff Follow Up

Policy and Governance

| | | |
|----|---|--------------------|
| 01 | Board Policy 1002 - Occupational Health and Safety | G. Shantz |
| 03 | Board Policy 1004 - Harassment | G. Shantz |
| 09 | Board Policy 1009 - Violence in the Workplace | G. Shantz |
| 13 | Board Policy 3007 - Membership in Ontario Public School Boards' Association | Trustee L. Tremble |

Reports

| | | |
|----|--|-------------|
| 16 | 2022-2023 Annual Pupil Accommodation Grant – School Renewal Allocation | M. Gerard |
| 24 | 2022-2023 Annual School Condition Improvement Grant – School Renewal | M. Gerard |
| 27 | Energy and Greenhouse Gas Emissions Update | M. Gerard |
| | Summer Learning Program | J. Albrecht |

Board Reports

| | | |
|----|---|--------------------|
| 46 | Direction for Voting Delegate - Ontario Public School Boards' Association AGM | Trustee L. Tremble |
|----|---|--------------------|

Question Period (*10 minutes*)

Future Agenda Items (*Notices of Motion to be referred to Agenda Development Committee*)

Adjournment

Questions relating to this agenda should be directed to
Stephanie Reidel, Manager of Corporate Services
519-570-0003, ext. 4336, or Stephanie_Reidel@wrdsb.ca



OCCUPATIONAL HEALTH AND SAFETY

| | |
|---------------------|--|
| Legal References: | <i>Ontario Occupational Health and Safety Act and Regulations</i> |
| Related References: | <i>Board Policy 1004 - Harassment</i> <i>Board Policy 1009 - Violence in the Workplace</i> <i>Administrative Procedure 3140 – Reporting and Investigation of Employee Incidents, Accidents and Safety Concerns</i> |
| Effective Date: | <i>February 23, 1998</i> |
| Revisions: | <i>October 17, 2016</i> <i>January 15, 2018</i> <i>June 21, 2021</i> |
| Reviewed: | <i>June 21, 2021</i> <i>May 16, 2022</i> |

1. It is the policy of the Waterloo Region District School Board (WRDSB), recognizing that all employees of the Board must adhere to the responsibilities and requirements placed upon it through the *Occupational Health and Safety Act* and Regulations, to:
 - 1.1 report unsafe conditions and comply with all other applicable legislated health and safety requirements;
 - 1.2 take every reasonable precaution to prevent personal injury and to take appropriate measures to provide and maintain a safe, healthy work environment for all employees;
 - 1.3 ensure that appropriate consideration is given to employee health and safety in all of the Board's organizational activities;
 - 1.4 ensure that employees are aware that the roles and responsibilities outlined in the *Occupational Health and Safety Act* and its Regulations for "worker" and "supervisors" are required duties in their roles with the Board;
 - 1.5 implement health and safety training programs as appropriate and ensure their effectiveness through evaluation;
 - 1.6 provide a respectful, safe and secure working environment for its employees free of violence, threats of violence, harassment (including sexual harassment), intimidation, bullying and other disruptive behaviour;
 - 1.7 ensure they utilize and comply with all Personal Protective Equipment (PPE) requirements as established by the WRDSB at all times.

2. This policy will be reviewed on an annual basis by the Director of Education, or designate, as well as the Board of Trustees, and posted in conspicuous locations in the workplace.



OCCUPATIONAL HEALTH AND SAFETY

| | |
|---------------------|--|
| Legal References: | <i>Ontario Occupational Health and Safety Act and Regulations</i> |
| Related References: | <i>Board Policy 1004 - Harassment Board Policy 1009 - Violence in the Workplace Administrative Procedure 3140 – Reporting and Investigation of Employee Incidents, Accidents and Safety Concerns</i> |
| Effective Date: | <i>February 23, 1998</i> |
| Revisions: | <i>October 17, 2016 January 15, 2018 June 21, 2021</i> |
| Reviewed: | <i>June 15, 2020</i> |

1. It is the policy of the Waterloo Region District School Board (WRDSB), recognizing that all employees of the Board must adhere to the responsibilities and requirements placed upon it through the *Occupational Health and Safety Act* and Regulations, to:
 - 1.1 report unsafe conditions and comply with all other applicable legislated health and safety requirements;
 - 1.2 take every reasonable precaution to prevent personal injury and to take appropriate measures to provide and maintain a safe, healthy work environment for all employees;
 - 1.3 ensure that appropriate consideration is given to employee health and safety in all of the Board's organizational activities;
 - 1.4 ensure that employees are aware that the roles and responsibilities outlined in the Occupational Health and Safety Act and its Regulations for "worker" and "supervisors" are required duties in their roles with the Board;
 - 1.5 implement health and safety training programs as appropriate and ensure their effectiveness through evaluation;
 - 1.6 provide a respectful, safe and secure working environment for its employees free of violence, threats of violence, harassment (including sexual harassment), intimidation, bullying and other disruptive behaviour;
 - 1.7 ensure employees utilize and comply with all Personal Protective Equipment (PPE) requirements as established by the WRDSB at all times.

2. This policy will be reviewed on an annual basis by the Director of Education, or designate, as well as the Board of Trustees, and posted in conspicuous locations in the workplace.



Board Policy 1004 HARASSMENT

| | |
|----------------------------|---|
| Legal References: | <i>Occupational Health and Safety Act Ontario Human Rights Code Education Act</i> |
| Related References: | <i>Board Policy 1002 - Occupational Health and Safety Policy Board Policy 1008 - Equity and Inclusion Board Policy 1009 - Violence in the Workplace Board Policy 6000 - Safe Schools Board Policy 6001 - Code of Conduct Administrative Procedure 1200 – Student Bullying and/or Harassment Administrative Procedure 3740 - Prevention and Resolution of Workplace Harassment</i> |
| Effective Date: | <i>February 23, 1998</i> |
| Revisions: | <i>January 15, 2018 June 21, 2021</i> |
| Reviewed: | <i>June 21, 2021 May 16, 2022</i> |

1. The Waterloo Region District School Board (WRDSB) is committed to providing a safe working and learning environment where all individuals are treated with dignity and respect, free from sexual, racial, ethno cultural, or other harassing or discriminatory behaviour.

This policy is intended to provide a greater awareness of the value of establishing and maintaining respectful working and learning environments and of responsiveness to the damaging effects of harassment in the workplace. The WRDSB will not tolerate harassment of any kind from any person in the workplace.

This policy applies to all work activities that occur while on Board premises, while engaging in workplace activities or workplace social events and extra-curricular activities.

2. Definitions

2.1. Harassment

The *Ontario Human Rights Code* defines 'harassment' as:

"Engaging in a course of vexatious comment or conduct that is known or ought reasonably to be known to be unwelcome."

The *Ontario Occupational Health and Safety Act* defines 'workplace harassment' as:

- a) *"Engaging in a course of vexatious comment or conduct against a worker in a workplace that is known or ought reasonably to be known to be unwelcome,*
or
- b) *Workplace sexual harassment."*

Workplace Sexual Harassment

The *Ontario Occupational Health and Safety Act* defines 'workplace sexual harassment' as:

- a) *"Engaging in a course of vexatious comment or conduct against a worker in a workplace because of sex, sexual orientation, gender identity or gender expression, where the course of comment or conduct is known or ought reasonably to be known to be unwelcome, or*
- b) *Making a sexual solicitation or advance where the person making the solicitation or advance is in a position to confer, grant or deny a benefit or advancement to the worker and the person knows or ought reasonably to know that the solicitation or advance is unwelcome."*

2.2. What Workplace Harassment is Not

Reasonable action or conduct by a Superintendent, Administrator, Manager, Officer, or Supervisor that is part of their normal work function would not normally be considered workplace harassment. This is the case even if there are sometimes unpleasant consequences for a worker.

For example, workplace harassment does not include:

- requesting medical documents or other appropriate documentation to support of an absence from work,
- measures to correct performance deficiencies, such as placing someone on a performance improvement plan or criticism of an employee's conduct or performance,
- transfers to other departments or shifts,
- changes in work assignments,
- time studies,
- job assessment or observations,
- enforcement of Board rules and procedures and
- administering disciplinary action for workplace infractions.

Also, differences in opinion or minor disagreements between co-workers would not generally be considered workplace harassment.

In addition, this policy is not meant to inhibit the free speech of our employees nor is it intended to interfere with the normal social relations that are part of working within this organization.

3. Application

- 3.1. This policy applies to all WRDSB employees, trustees and other users such as members of consultative committees, clients of the WRDSB, parents, volunteers, permit holders, contractors, and employees of other organizations not related to the WRDSB but who nevertheless work on or are invited onto WRDSB premises. This policy also covers harassment by such persons which is proven to have repercussions that adversely affect the WRDSB's learning and working environment.
- 3.2. The rights of students to a respectful working and learning environment, free from harassment and discrimination, are dealt with under other appropriate legislation, regulations, and Board policy and procedures including but not limited to: the *Education Act* (Section XIII), Safe School Policy (6000), Code of Conduct (6001), Student Bullying Prevention and Intervention Policy (6009), and Administrative Procedure 1200 - Student Bullying and/or Harassment.

4. Guidelines

- 4.1. The WRDSB is committed to develop and maintain a program to implement this policy with respect to harassment, and to meeting the requirements of the *Occupational Health and Safety Act* and *Ontario Human Rights Code*.
- 4.2. This policy prohibits reprisals against individuals, acting in good faith, who report incidents of harassment or act as witnesses. The Board shall take all reasonable and practical measures to prevent reprisals, threats of reprisal, or further harassment.
- 4.3. This policy will be reviewed on an annual basis by the Director of Education, or designate, as well as the Board of Trustees, and posted in conspicuous locations in the workplace.

DRAFT



Board Policy 1004 HARASSMENT

| | |
|----------------------------|---|
| Legal References: | <i>Ontario Occupational Health and Safety Act Ontario Human Rights Code Education Act</i> |
| Related References: | <i>Board Policy 1002 - Occupational Health and Safety Policy Board Policy 1008 - Equity and Inclusion Board Policy 1009 - Violence in the Workplace Board Policy 6000 - Safe Schools Board Policy 6001 - Code of Conduct Administrative Procedure 1200 – Student Bullying and/or Harassment Administrative Procedure 3740 - Prevention and Resolution of Workplace Harassment</i> |
| Effective Date: | <i>February 23, 1998</i> |
| Revisions: | <i>January 15, 2018 June 21, 2021</i> |
| Reviewed: | <i>June 15, 2020</i> |

1. The Waterloo Region District School Board (WRDSB) is committed to providing a safe working and learning environment where all individuals are treated with dignity and respect, free from sexual, racial, ethno cultural, or other harassing or discriminatory behaviour.

This policy is intended to provide a greater awareness of the value of establishing and maintaining respectful working and learning environments and of responsiveness to the damaging effects of harassment in the workplace. The WRDSB will not tolerate harassment of any kind from any person in the workplace.

This policy applies to all work activities that occur while on Board premises, while engaging in workplace activities or workplace social events and extra-curricular activities.

2. Definitions

2.1. Harassment

The *Ontario Human Rights Code* defines 'harassment' as:

"Engaging in a course of vexatious comment or conduct that is known or ought reasonably to be known to be unwelcome."

The *Ontario Occupational Health and Safety Act* defines 'workplace harassment' as:

- a) *"Engaging in a course of vexatious comment or conduct against a worker in a workplace that is known or ought reasonably to be known to be unwelcome,*
or
- b) *Workplace sexual harassment."*

Workplace Sexual Harassment

The *Ontario Occupational Health and Safety Act* defines 'workplace sexual harassment' as:

- a) *"Engaging in a course of vexatious comment or conduct against a worker in a workplace because of sex, sexual orientation, gender identity or gender expression, where the course of comment or conduct is known or ought reasonably to be known to be unwelcome, or*
- b) *Making a sexual solicitation or advance where the person making the solicitation or advance is in a position to confer, grant or deny a benefit or advancement to the worker and the person knows or ought reasonably to know that the solicitation or advance is unwelcome."*

2.2. What Workplace Harassment is Not

Reasonable action or conduct by a Superintendent, Administrator, Manager, Officer, or Supervisor that is part of their normal work function would not normally be considered workplace harassment. This is the case even if there are sometimes unpleasant consequences for a worker.

For example, workplace harassment does not include:

- requesting medical documents or other appropriate documentation to support of an absence from work,
- measures to correct performance deficiencies, such as placing someone on a performance improvement plan or criticism of an employee's conduct or performance,
- transfers to other departments or shifts,
- changes in work assignments,
- time studies,
- job assessment or observations,
- enforcement of Board rules and procedures and
- administering disciplinary action for workplace infractions.

Also, differences in opinion or minor disagreements between co-workers would not generally be considered workplace harassment.

In addition, this policy is not meant to inhibit the free speech of our employees nor is it intended to interfere with the normal social relations that are part of working within this organization.

3. Application

- 3.1. This policy applies to all WRDSB employees, trustees and other users such as members of consultative committees, clients of the WRDSB, parents, volunteers, permit holders, contractors, and employees of other organizations not related to the WRDSB but who nevertheless work on or are invited onto WRDSB premises. This policy also covers harassment by such persons which is proven to have repercussions that adversely affect the WRDSB's learning and working environment.
- 3.2. The rights of students to a respectful working and learning environment, free from harassment and discrimination, are dealt with under other appropriate legislation, regulations, and Board policy and procedures including but not limited to: the *Education Act* (Section XIII), Safe School Policy (6000), Code of Conduct (6001), Student Bullying Prevention and Intervention Policy (6009), and Administrative Procedure 1200 - Student Bullying and/or Harassment.

4. Guidelines

- 4.1. The WRDSB is committed to develop and maintain a program to implement this policy with respect to harassment, and to meeting the requirements of the *Ontario Occupational Health and Safety Act* and *Ontario Human Rights Code*.
- 4.2. This policy prohibits reprisals against individuals, acting in good faith, who report incidents of harassment or act as witnesses. The Board shall take all reasonable and practical measures to prevent reprisals, threats of reprisal, or further harassment.
- 4.3. This policy will be reviewed on an annual basis by the Director of Education, or designate, as well as the Board of Trustees, and posted in conspicuous locations in the workplace.



VIOLENCE IN THE WORKPLACE

| | |
|----------------------------|--|
| Legal References: | <i>Ontario Occupational Health and Safety Act Education Act Safe Schools Act</i> |
| Related References: | <i>Board Policy 1002 - Occupational Health and Safety Policy Board Policy 1004 - Harassment Policy Board Policy 1008 - Equity & Inclusion Policy Board Policy 6000 - Safe Schools Board Policy 6001 - Code of Conduct Administrative Procedure 2330 - Management Process for Students Causing a Risk-of-Injury Administrative Procedure 3780 - Violence in the Workplace</i> |
| Effective Date: | <i>May, 2007</i> |
| Revisions: | <i>January 15, 2018 June 21, 2021</i> |
| Reviewed: | <i>June 21, 2021 May 16, 2022</i> |

1. The Waterloo Region District School Board (WRDSB) is committed to providing a working and learning environment free from workplace violence including domestic violence that may pose a risk in the workplace, where all individuals are treated with dignity and respect.
 - 1.1. This policy is intended to provide a greater awareness of the value of establishing and maintaining respectful working and learning environments. Any act of violence in the workplace is unacceptable conduct and for this reason, the Board will not tolerate any incidents of this kind against or by any employee or any other person.
 - 1.2. This policy applies to all work activities that occur while on WRDSB premises, while engaging in workplace activities or workplace social events and extra-curricular activities.
2. Definitions:
 - 2.1. Workplace Violence

As defined by the *Occupational Health and Safety Act*, workplace violence is:

 - a) *the exercise of physical force by a person against a worker, in a workplace, that causes or could cause physical injury to the worker,*
 - b) *an attempt to exercise physical force against a worker, in a workplace, that could cause physical injury to a worker,*
 - c) *a statement or behaviour that it is reasonable for a worker to interpret as a threat to exercise physical force against a worker, in a workplace, that could cause physical injury to a worker.*

3. Application

- 3.1. This policy applies to all WRDSB employees, trustees and other users such as members of consultative committees, clients of the WRDSB, parents, volunteers, permit holders, contractors, and employees of other organizations not related to the WRDSB, but who nevertheless work on or are invited onto WRDSB premises. This policy also covers workplace violence by such persons which is proven to have repercussions that adversely affect the WRDSB's learning and working environment.
- 3.2. The rights of students to a respectful working and learning environment, free from violence, are dealt with under other appropriate legislation, regulations and WRDSB policy and procedure including but not limited to the *Education Act* (Section XIII), Safe School Policy (6000), Code of Conduct (6001), Equity and Inclusion Policy (1008), and Administrative Procedure 2330 - Management Process for Student Behaviours Causing a Risk of Injury.

4. Guidelines

- 4.1. The WRDSB, as the employer, will comply with all aspects of the *Occupational Health and Safety Act* that apply to the organization.
 - 4.2. The WRDSB is committed to developing and maintaining a program to implement this policy with respect to workplace violence. It is recognized that when working with students, including students with special needs, the WRDSB may be required to implement proactive measures to promote a violence-free workplace.
 - 4.3. The WRDSB will assess the risk of workplace violence that may arise from the nature of the workplace, in accordance with the provisions of the *Occupational Health and Safety Act*.
 - 4.4. This policy prohibits reprisals against individuals, acting in good faith, who report incidents of workplace violence or act as witnesses. The WRDSB shall take all reasonable and practical measures to prevent reprisals, threats of reprisal, or further violence.
5. This policy will be reviewed on an annual basis by the Director of Education, or designate, as well as the Board of Trustees, and posted in conspicuous locations in the workplace.



VIOLENCE IN THE WORKPLACE

| | |
|----------------------------|--|
| Legal References: | <i>Ontario Occupational Health and Safety Act Education Act Safe Schools Act</i> |
| Related References: | <i>Board Policy 1002 - Occupational Health and Safety Policy Board Policy 1004 - Harassment Policy Board Policy 1008 - Equity & Inclusion Policy Board Policy 6000 - Safe Schools Board Policy 6001 - Code of Conduct Administrative Procedure 2330 - Management Process for Students Causing a Risk-of-Injury Administrative Procedure 3780 - Violence in the Workplace</i> |
| Effective Date: | <i>May 2007</i> |
| Revisions: | <i>September 19, 2016, January 15, 2018</i> |
| Reviewed: | <i>June 15, 2020, June 21, 2021</i> |

1. The Waterloo Region District School Board (WRDSB) is committed to providing a working and learning environment free from workplace violence including domestic violence that may pose a risk in the workplace, where all individuals are treated with dignity and respect.
 - 1.1. This policy is intended to provide a greater awareness of the value of establishing and maintaining respectful working and learning environments. Any act of violence in the workplace is unacceptable conduct and for this reason, the Board will not tolerate any incidents of this kind against or by any employee or any other person.
 - 1.2. This policy applies to all work activities that occur while on WRDSB premises, while engaging in workplace activities or workplace social events and extra-curricular activities.
2. Definitions:
 - 2.1. Workplace Violence

As defined by the *Occupational Health and Safety Act*, workplace violence is:

 - a) *the exercise of physical force by a person against a worker, in a workplace, that causes or could cause physical injury to the worker,*
 - b) *an attempt to exercise physical force against a worker, in a workplace, that could cause physical injury to a worker,*
 - c) *a statement or behaviour that it is reasonable for a worker to interpret as a threat to exercise physical force against a worker, in a workplace, that could cause physical injury to a worker.*

3. Application

- 3.1. This policy applies to all WRDSB employees, trustees and other users such as members of consultative committees, clients of the WRDSB, parents, volunteers, permit holders, contractors, and employees of other organizations not related to the WRDSB, but who nevertheless work on or are invited onto WRDSB premises. This policy also covers workplace violence by such persons which is proven to have repercussions that adversely affect the WRDSB's learning and working environment.
- 3.2. The rights of students to a respectful working and learning environment, free from violence, are dealt with under other appropriate legislation, regulations and WRDSB policy and procedure including but not limited to the *Education Act* (Section XIII), Safe School Policy (6000), Code of Conduct (6001), Equity and Inclusion Policy (1008), and Administrative Procedure 2330 - Management Process for Student Behaviours Causing a Risk of Injury.

4. Guidelines

- 4.1. The WRDSB, as the employer, will comply with all aspects of the *Occupational Health and Safety Act* that apply to the organization.
 - 4.2. The WRDSB is committed to developing and maintaining a program to implement this policy with respect to workplace violence. It is recognized that when working with students, including students with special needs, the WRDSB may be required to implement proactive measures to promote a violence-free workplace.
 - 4.3. The WRDSB will assess the risk of workplace violence that may arise from the nature of the workplace, in accordance with the provisions of the *Occupational Health and Safety Act*.
 - 4.4. This policy prohibits reprisals against individuals, acting in good faith, who report incidents of workplace violence or act as witnesses. The WRDSB shall take all reasonable and practical measures to prevent reprisals, threats of reprisal, or further violence.
5. This policy will be reviewed on an annual basis by the Director of Education, or designate, as well as the Board of Trustees, and posted in conspicuous locations in the workplace.



Report to Committee of the Whole

May 16, 2022

Subject: Ontario Public School Boards' Association – Approval of Membership Fee

Recommendation

That the Waterloo Region District School Board approve Board Policy 3007, and continue with membership in the Ontario Public School Boards' Association (OPSBA) for 2022-2023.

Status

To present for review, Board Policy 3007 (Appendix A) regarding membership in the Ontario Public School Boards' Association (OPSBA). Information regarding the services provided by OPSBA can be found at www.opsba.org. These services include labour relations, advocacy initiatives, media relations, and professional development. The membership fee is based on a formula connected to a school board's student enrolment. Last year, the fee was \$129,299.12 (including HST), and it is anticipated that the fee for this year will be similar. The OPSBA Board of Directors indicated that there would be no change in membership fees. There may, however, be a slight change to board membership based on the fee model which is composed of a base amount and a percentage of your Board Administration and Governance Grant.

If trustees agree to continue their membership in the Association, then approval of a motion to retain Board Policy 3007 will be required as outlined in the recommendation.

Background

Annual review is required of Board Policy 3007 as indicated in the policy.

Financial implications

There is an amount incorporated into the budget annually to cover the cost of the OPSBA membership fee.

Communications

No further communication is required at this time.

Prepared by: Stephanie Reidel, Manager of Corporate Services, on behalf of Trustee Laurie Tremble, and in consultation with Coordinating Council.



MEMBERSHIP IN ONTARIO PUBLIC SCHOOL BOARDS' ASSOCIATION

| | |
|---------------------|---|
| Legal References: | <i>Education Act 191.2(3) – Other Expenses (Board Members).</i> |
| Related References: | <i>Board Policy 3003 – Trustee Professional Development Expenses</i> |
| Effective Date: | <i>June 2000</i> |
| Revisions: | <i>March 2007, June 21, 2021</i> |
| Reviewed: | <i>June 8, 2020, May 9, 2022</i> |

1. Preamble

- 1.1 The Waterloo Region District School Board (WRDSB) recognizes the inherent values in maintaining a positive relationship with other public district school boards throughout the Province of Ontario through membership in the Ontario Public School Boards' Association.

2. Membership Renewal

- 2.1 Membership in the Ontario Public School Boards' Association (OPSBA) will be renewed annually in conjunction with the development of the Board's operating budget. At that time, Policy 3007 (Membership in OPSBA) will also be reviewed.

3. Annual Appointments/Nominations

- 3.1 In accordance with OPSBA's bylaws, appointments to the following positions must be approved by trustees annually prior to the Annual General Meeting:
- Voting Delegate and Alternate for the OPSBA Annual General Meeting;
 - Director and Alternate Director on the OPSBA Board of Directors.
- 3.2 In conjunction with the above appointments, trustees may also nominate one of their members for the following positions:
- Executive Officers - President, First Vice-President, Second Vice-President (any trustee from a member board is eligible for nomination);
 - Regional Chair - Central West Region (any trustee from a member board in the Central West Region is eligible for nomination);
 - Regional Vice-Chair - Central West Region (any trustee who is appointed by a district school board to the OPSBA Board of Directors is eligible for nomination);
 - Regional Appointment to Core Issue Work Groups.

4. OPSBA Expenses

- 4.1 Expenses incurred by trustees while attending OPSBA events will be reimbursed in accordance with Board Policy 3003 – Trustee Professional Development **Expenses**.



MEMBERSHIP IN ONTARIO PUBLIC SCHOOL BOARDS' ASSOCIATION

Legal References: *Education Act 191.2(3) – Other Expenses (Board Members).*

Related References: *Board Policy 3003 – Trustee Professional Development*

Effective Date: *June 2000*

Revisions: *March 2007, June 21, 2021*

Reviewed: *June 8, 2020,*

1. Preamble

- 1.1 The Waterloo Region District School Board (WRDSB) recognizes the inherent values in maintaining a positive relationship with other public district school boards throughout the Province of Ontario through membership in the Ontario Public School Boards' Association.

2. Membership Renewal

- 2.1 Membership in the Ontario Public School Boards' Association (OPSBA) will be renewed annually in conjunction with the development of the Board's operating budget. At that time, Policy 3007 (Membership in OPSBA) will also be reviewed.

3. Annual Appointments/Nominations

- 3.1 In accordance with OPSBA's bylaws, appointments to the following positions must be approved by trustees annually prior to the Annual General Meeting:
- Voting Delegate and Alternate for the OPSBA Annual General Meeting;
 - Director and Alternate Director on the OPSBA Board of Directors.
- 3.2 In conjunction with the above appointments, trustees may also nominate one of their members for the following positions:
- Executive Officers - President, First Vice-President, Second Vice-President (any trustee from a member board is eligible for nomination);
 - Regional Chair - Central West Region (any trustee from a member board in the Central West Region is eligible for nomination);
 - Regional Vice-Chair - Central West Region (any trustee who is appointed by a district school board to the OPSBA Board of Directors is eligible for nomination);
 - Regional Appointment to Core Issue Work Groups.

4. OPSBA Expenses

- 4.1 Expenses incurred by trustees while attending OPSBA events will be reimbursed in accordance with Board Policy 3003 – Trustee Professional Development.



Report to Committee of the Whole

May 16, 2022

Subject: 2022-2023 Pupil Accommodation Grant – School Renewal Allocation

Recommendation

That the Waterloo Region District School Board approve the 2022-2023 Pupil Accommodation Grant expenditures for the year September 1, 2022 to August 31, 2023, not to exceed the estimated level of grant received from the Ministry of Education for School Renewal Allocation, as established in the budget of the report entitled, 2022-2023 Pupil Accommodation Grant – School Renewal Allocation, dated May 16, 2022.

Status

The funds available are divided between major maintenance items and program needs. Business Services establishes the spending priorities for major maintenance programs through condition assessments performed by Facility Services staff and/or outside consultants. These items are placed in the long-range capital forecast and are scheduled as funding permits.

Renovations for program purposes that have been requested by school Principals are prioritized through consultation with the Elementary Accommodation Committee (EAC) and the Secondary Accommodation Committee (SAC). Both Committees meet approximately six times per year to discuss the needs identified and prioritize projects within the system. The memberships of the Committees are listed in Appendix A. School Renewal funds related to program improvements are allocated based on priorities recommended by these Committees and are further prioritized at the Accommodation Steering Committee (ASC), see Appendix A (i).

Major maintenance and program improvements proposed in this budget have been prioritized with the intent to bring older schools up to current standards. Many prioritized projects for both major maintenance and program improvements cannot be funded from the amount available in the anticipated allocation.

Appendix B presents the proposed budget by category for school renewal. Appendix C illustrates the projects prioritized by Facility Services staff for the 2022-2023 School Renewal Allocation and Appendix D illustrates a summary of 2021-2022 projects.

Background

As per Ministry of Education Memorandum [2022:B04 memorandum](#) dated Feb 17, 2022, the Ministry is continuing its investment with \$370M in funding allocated across 72 school boards towards the School Renewal Allocation Grant.

The School Renewal Allocation is provided by the Ministry of Education to address the cost of repairing and renovating schools and infrastructure. This funding has typically

allowed major maintenance programs such as roof replacements, mechanical upgrades and school renovations to be completed. Renovations have included program improvements such as those made to science, libraries, special education, athletic facility upgrades and administrative areas as prioritized through Elementary and Secondary Accommodation Committees.

Financial implications

As per Ministry of Education Memorandum 2022:B04 dated Feb 17, 2022, the Ministry's allocation to the Waterloo Region District School Board towards the School Renewal Grant for the 2022-2023 fiscal year is projected to be **\$10,341,306**.

Money received in this allocation must be spent on renewal projects.

Communications

Once the Waterloo Region District School Board approves the Pupil Accommodation Grant, resources will be assigned, and school Principals will be advised of upcoming activities to detail the scope of projects and coordinate proposed projects.

Prepared by: Matthew Gerard, Coordinating Superintendent, Business Services
& Treasurer of the Board
John Veit, Controller, Facility Services
Ron Dallan, Manager of Capital Projects
in consultation with Coordinating Council

**WATERLOO REGION DISTRICT SCHOOL BOARD
BUSINESS SERVICES DIVISION
FACILITY SERVICES DEPARTMENT**

**PUPIL ACCOMMODATION GRANT - SCHOOL RENEWAL ALLOCATION
2021-2022 ACCOMMODATION COMMITTEES
COMMITTEE MEMBERSHIP**

ELEMENTARY ACCOMMODATION COMMITTEE

| | |
|----------------------------------|---|
| <i>Jason Stere, Chair</i> | Principal, Silverheights P.S. |
| John Veit | Controller, Facility Services |
| Joe Bell | System Administrator, Learning Services |
| Ron Dallan | Manager of Capital Projects |
| Lauren Agar | Manager of Planning |
| Andrea Michelutti | Family of Schools #5 - Principal, Jean Steckle P.S. |
| Afrim Ficic | Family of Schools #8 - Principal, A.R. Kaufman P.S. |
| Rebecca Rouse | Elementary Consultant, ITS/JK-8 |
| Mark Kovrig | Facility Manager - Facility Services Area 1 |
| Alex Ramirez | Facility Manager - Facility Services Area 2 |
| Mike Colvin | Facility Manager - Facility Services Area 3 |
| Amber Martz | Facility Manager - Facility Services Area 4 |
| Sarah Galliher | Senior Planner |
| Emily Bumbaco | Senior Planner |
| Nathan Hercanuck | Senior Planner |

SECONDARY ACCOMMODATION COMMITTEE

| | |
|----------------------------------|---|
| <i>Dave Wilson, Chair</i> | Principal, Glenview Park S.S. |
| Joe Bell | System Administrator, Learning Services |
| John Veit | Controller, Facility Services |
| Ron Dallan | Manager of Capital Projects |
| Lauren Agar | Manager of Planning |
| Paula Bender | Family of Schools #3 & #4 - Principal, Preston High S.S. |
| Vida Collis | Family of Schools #1 & #7 - Principal, Laurel Heights S.S. |
| Deb Tyrrell | Family of Schools #5 & #6 - Principal, Bluevale C.I. |
| Ryan Hume | Family of Schools #2 & #8 - Principal, Eastwood C.I. |
| Craig McLeman | Family of Schools #3 - V-Principal, Glenview Park S.S. |
| Dave Williamson | Family of Schools #5 - V-Principal, Waterloo Oxford District S.S. |
| James Shantz | Family of Schools #7 - V-Principal, Forest Heights C.I. |
| Daniel Ballantyne | Family of Schools #2 - V-Principal, Grand River C.I. |
| Jane Mitchinson | Secondary Consultant, ITS |
| Mark Kovrig | Facility Manager - Facility Services Area 1 |
| Alex Ramirez | Facility Manager - Facility Services Area 2 |
| Mike Colvin | Facility Manager - Facility Services Area 3 |
| Amber Martz | Facility Manager - Facility Services Area 4 |
| Lou Lima | Manager, Mechanical/Electrical/Environmental Services |
| Sarah Galliher | Senior Planner |
| Emily Bumbaco | Senior Planner |
| Nathan Hercanuck | Senior Planner |

**WATERLOO REGION DISTRICT SCHOOL BOARD
BUSINESS SERVICES DIVISION
FACILITY SERVICES DEPARTMENT**

**PUPIL ACCOMMODATION GRANT - SCHOOL RENEWAL ALLOCATION
2021-2022 ACCOMMODATION STEERING COMMITTEE
COMMITTEE MEMBERSHIP**

ACCOMMODATION STEERING COMMITTEE

| | |
|--------------------------------|--|
| <i>John Veit, Chair</i> | Controller, Facility Services |
| Matthew Gerard | Coordinating Superintendent, Business Services & Treasurer |
| Scott Miller | Superintendent, Student Achievement & Well-Being |
| Ivana Maclsaac | Senior Manager of ITS |
| Nick Landry | Controller, Financial Services |
| Eusis Dougan-McKenzie | Chief Communication Officer |
| Ron Dallan | Manager of Capital Projects |
| Dave Wilson | Principal (Chair, SAC) |
| Jason Stere | Principal (Chair, EAC) |
| Lauren Agar | Manager of Planning |
| Sarah Galliher | Senior Planner |
| Emily Bumbaco | Senior Planner |
| Nathan Hercanuck | Senior Planner |

**WATERLOO REGION DISTRICT SCHOOL BOARD
BUSINESS SERVICES DIVISION
FACILITY SERVICES DEPARTMENT**

**PUPIL ACCOMMODATION GRANT - SCHOOL RENEWAL ALLOCATION
BUDGET BY CATEGORY
SEPTEMBER 1, 2022 TO AUGUST 31, 2023**

| <i>Program Needs Description</i> | <i>Budget</i> | <i>Major Maintenance Description</i> | <i>Budget</i> |
|---|----------------------------|---|-----------------------------|
| Renovations/Alterations Secondary Program | \$ 1,500,000 | Building Envelope (roof, doors, walls, windows) | \$ 725,000 |
| Renovations/Alterations Elementary Program | \$ 1,500,000 | Interior Finishes (ceilings, floors, paint, lockers, hardware) | \$ 1,000,000 |
| Renovations/Alterations Special Education | \$ 250,000 | Site Improvements (paving, concrete, masonry, grounds) | \$ 800,000 |
| Sustainability | \$ 200,000 | Mechanical, Electrical Upgrades | \$ 725,000 |
| Schematic Design Briefs | \$ 100,000 | Energy Conservation | \$ 750,000 |
| Health & Safety & Security | \$ 100,000 | Building Code, Fire Code, OHSA Upgrades, Consulting Fees, Studies | \$ 116,306 |
| Environmental | \$ 500,000 | Temporary Accommodation Repairs | \$ 75,000 |
| Accessibility | \$ 2,000,000 | | |
| Program Subtotal | <u>\$ 6,150,000</u> | Maintenance Subtotal | <u>\$ 4,191,306</u> |
| | | Estimated Total | <u>\$ 10,341,306</u> |

**WATERLOO REGION DISTRICT SCHOOL BOARD
BUSINESS SERVICES DIVISION
FACILITY SERVICES DEPARTMENT
PUPIL ACCOMMODATION GRANT - SCHOOL RENEWAL ALLOCATION
PROJECT PRIORITIES BY CATEGORY
SEPTEMBER 1, 2022 TO AUGUST 31, 2023**

| | | | | |
|----------|---|--|--------------------|----------------------|
| A | Sustainability | | Allocation: | \$ 200,000 |
| | REGION-WIDE | Projects contributing to Natural Environment and Infrastructure Preservation through Land and Habitat Stewardship, Water Conservation, Transportation | | |
| B | Schematic Design Briefs | | Allocation: | \$ 100,000 |
| | REGION-WIDE | Schematic Designs for future projects to gain accurate costing and schedules | | |
| C | Environmental | | Allocation: | \$ 500,000 |
| | REGION-WIDE | Site assessment and data development for asbestos regulations, testing and abatement | | |
| | REGION-WIDE | Environmental Projects | | |
| D | Renovations/Alterations Secondary Program including Outdoor Education | | Allocation: | \$ 1,500,000 |
| | REGION-WIDE | Renovations/alterations to secondary facilities for projects to improve school programs: priorities are established in consultation with the Secondary Accommodation Committee | | |
| E | Renovations/Alterations Elementary Program including Outdoor Education | | Allocation: | \$ 1,500,000 |
| | REGION-WIDE | Renovations/alterations to elementary facilities for projects to improve school programs: priorities are established in consultation with the Elementary Accommodation Committee | | |
| F | Renovations/Alterations Special Education | | Allocation: | \$ 250,000 |
| | REGION-WIDE | Renovations/alterations for Special Education programs brought forward throughout the school year identified by Special Education staff | | |
| G | Building Code, Fire Code, OHSA, Consultant Fees, Studies | | Allocation: | \$ 116,306 |
| | REGION-WIDE | Consulting fees for studies relating to building infrastructure, OH&SA compliance, Building code and Fire code compliance | | |
| H | Energy Conservation | | Allocation: | \$ 750,000 |
| | REGION-WIDE | Projects and Studies relating to Energy Conservation | | |
| I | Temporary Accomodation Repairs | | Allocation: | \$ 75,000 |
| | REGION-WIDE | Repair and upgrades to single portable classrooms and Porta-Paks | | |
| J | Interior Finishes | | Allocation: | \$ 1,000,000 |
| | REGION-WIDE | Ceiling replacements and repairs | | |
| | REGION-WIDE | Flooring replacements | | |
| | REGION-WIDE | Secondary School - Cafeteria Revitalization | | |
| | REGION-WIDE | Locker replacements | | |
| | REGION-WIDE | Interior painting | | |
| K | Mechanical and Electrical | | Allocation: | \$ 725,000 |
| | REGION-WIDE | Upgrade service panels and light fixtures | | |
| | REGION-WIDE | Heating ventillation and air conditioning improvements | | |
| | REGION-WIDE | Backflow prevention implementation | | |
| L | Building Envelope | | Allocation: | \$ 725,000 |
| | REGION-WIDE | Roof and window replacements | | |
| | REGION-WIDE | Exterior walls | | |
| | REGION-WIDE | Replacement of exterior doors | | |
| M | Accessibility | | Allocation: | \$ 2,000,000 |
| | REGION-WIDE | Renovations/alterations for school accessibility brought forward by Accessibility Committee | | |
| N | Site Improvements | | Allocation: | \$ 800,000 |
| | REGION-WIDE | Paving repairs and new parking | | |
| | REGION-WIDE | Field drainage improvements | | |
| | REGION-WIDE | Repair/replacement of fields, walkways, steps and retaining walls | | |
| O | Health and Safety and Security | | Allocation: | \$ 100,000 |
| | REGION-WIDE | Upgrades to CCTV, Access Card Readers, Security Cameras, Defibulator Installs | | |
| | | Estimated Total | | \$ 10,341,306 |

WATERLOO REGION DISTRICT SCHOOL BOARD
BUSINESS SERVICES DIVISION
FACILITY SERVICES DEPARTMENT

PUPIL ACCOMMODATION GRANT - SCHOOL RENEWAL ALLOCATION
PROJECT PRIORITIES BY CATEGORY
SEPTEMBER 1, 2021 TO AUGUST 31, 2022

| | | | 14-Jun-21 | 16-May-2022 - est |
|-------------|---|--|--------------------|-------------------|
| A | Sustainability | | Allocation: | |
| REGION-WIDE | Projects contributing to Natural Environment and Infrastructure Preservation through Land and Habitat Stewardship, Water Conservation, Transportation | | \$200,000 | \$200,000 |
| REGION-WIDE | EV Charging Stations - Groh, Vista Hills, Riverside, Cedar Creek, Janet Metcalfe, Westmount | | | |
| B | Schematic Design Briefs | | Allocation: | |
| REGION-WIDE | Schematic Designs for future projects (EAC, SAC, Mech/Elect, Building Env.) to gain accurate costing and timing | | \$150,000 | \$150,000 |
| C | Environmental | | Allocation: | |
| GRCI | Abatement associated with Hospitality project | | \$500,000 | \$585,000 |
| REGION-WIDE | Site assessment and data development for asbestos regulations, testing and | | | |
| REGION-WIDE | Environmental Projects | | | |
| D | Renovations/Alterations Secondary Program | | Allocation: | |
| REGION-WIDE | Renovations/alterations to secondary facilities for projects to improve school programs - priorities are established in consultation with the Secondary Accommodation Committee | | \$1,700,000 | \$2,118,982 |
| GCI | Renovate Room to Family Studies new Standards (SAC#82), Renovate Weight Room (SAC#58) | | | |
| FHCI | Renovate Room to Family Studies new Standards (SAC#78) including fashion | | | |
| GRCI | GRCI – Hospitality Renovation (SAC#85) - plus renovate old science labs to Regular classrooms | | | |
| WODSS | Renovate Room to Family Studies new standards (SAC#79) - Design only | | | |
| LHSS | Convert existing POD into Science Lab Space (SAC#93) | | | |
| E | Renovations/Alterations Elementary Program | | Allocation: | |
| REGION-WIDE | Renovations/alterations to elementary facilities for projects to improve school programs - priorities are established in consultation with the Elementary Accommodation Committee | | \$1,700,000 | \$1,700,000 |
| Highland | Enlarge Main Office, Add Health Room and Storage Relocate rm 17 to classroom 5, Repurpose 17 into Staff room (EAC#71) | | | |
| MacGregor | Upgrade Library to current standards (combine project with staff room upgrade and elevator installation project) (EAC#136) | | | |
| Hespeler | Renovate to current Office Standards create a better flow space and better access to areas (EAC#128) | | | |
| Smithson | Update and expand Office Space (EAC#90) | | | |
| F | Renovations/Alterations Special Education | | Allocation: | |
| REGION-WIDE | Renovations/alterations for Special Education programs brought forward throughout the school year as identified by Special Education staff | | \$250,000 | \$450,000 |
| FHCI | Creating a more functional washroom to accommodate special needs students at SSS - together with SCI | | | |
| SSS | Creating a more functional washroom to accommodate special needs students at SSS - together with SCI | | | |
| MacGregor | Creating a more functional washroom to accommodate special needs students at MacGregor - together with SCI | | | |
| Chalmers | Creating a more functional washroom to accommodate special needs students at Chalmers - together with SCI | | | |
| G | Building Code, Fire Code, OHS, | | Allocation: | |
| REGION-WIDE | Consulting fees for studies relating to building infrastructure, OH&SA compliance, Building code and Fire code compliance | | \$300,000 | \$270,000 |
| REGION-WIDE | Playground Equipment Repairs | | | |
| REGION-WIDE | Ministry of Labour Guarding in Tech Shops | | | |
| REGION-WIDE | Abatement Required During Regular Repair Work orders | | | |
| REGION-WIDE | Natural Gas Leak inspections | | | |
| REGION-WIDE | Fire Panel Inspections | | | |
| REGION-WIDE | Lifting Equipment Repairs Over \$2,500 | | | |
| REGION-WIDE | Electrical Panel Inspections - Thermography | | | |

**WATERLOO REGION DISTRICT SCHOOL BOARD
BUSINESS SERVICES DIVISION
FACILITY SERVICES DEPARTMENT**

**PUPIL ACCOMMODATION GRANT - SCHOOL RENEWAL ALLOCATION
PROJECT PRIORITIES BY CATEGORY
SEPTEMBER 1, 2021 TO AUGUST 31, 2022**

| | | | 14-Jun-21 | 16-May-2022 - est | |
|----------|---------------------------------------|---|--------------------|-------------------|-------------|
| H | Energy Conservation | | Allocation: | \$250,000 | \$250,000 |
| | REGION-WIDE | Projects and Studies relating to Energy Conservation | | | |
| | REGION-WIDE | LED lighting upgrades | | | |
| | REGION-WIDE | Natural Gas Metering | | | |
| I | Temporary Accomodation Repairs | | Allocation: | \$100,000 | \$100,000 |
| | REGION-WIDE | Repair and upgrades to portable classrooms and Porta-Paks | | | |
| J | Interior Finishes | | Allocation: | \$1,300,000 | \$1,300,000 |
| | REGIONWIDE | Gym Floors - ARKaufman, SSS | | | |
| | REGIONWIDE | Washroom renovations - along with CVRIS - Margaret Ave, St.Andrews | | | |
| | REGIONWIDE | Lockers/Locker faces - Queensmount, Laurentian,WCI,GCI | | | |
| | REGIONWIDE | Interior Refresh and Finishes (eg. Paint,Ceilings,Flooring) | | | |
| K | Mechanical and Electrical | | Allocation: | \$950,000 | \$900,000 |
| | REGION-WIDE | Air Conditioning / Cooling Upgrades together with CVRIS /SCI | | | |
| | REGION-WIDE | HVAC Upgrades together with CVRIS / SCI | | | |
| | REGION-WIDE | Upgrade Tech shop access controls | | | |
| | REGION-WIDE | Upgrade service panels and light fixtures | | | |
| L | Building Envelope | | Allocation: | \$1,000,000 | \$1,000,000 |
| | REGION-WIDE | Roofing Replacements (together with SCI) | | | |
| | REGION-WIDE | Window Replacements (together with SCI) | | | |
| | REGION-WIDE | Brick Repair/Replace (together with SCI) | | | |
| | REGION-WIDE | Exterior Doors (together with SCI) | | | |
| M | Accessibility | | Allocation: | \$1,000,000 | \$1,000,000 |
| | REGION-WIDE | Renovations/alterations for school accessibility brought forward by Accessibility Committee | | | |
| | MacGregor | Elevator to replace ramp (in conjunction with SCI) - Finishing | | | |
| | PHS | Add Elevator (in conjunction with SCI) - Finishing | | | |
| | King Edward | Elevator - Design / Beginning construction Summer/Fall 2022 | | | |
| | Central | Elevator - Design / construction Fall 2022 | | | |
| | REGION-WIDE | In Design - Elizabeth Ziegler, Suddaby, Sheppard | | | |
| | REGION-WIDE | Gender Neutral ,Universal or BF Washrooms - In conjunction with CVRIS and SCI funding (ECI,Hespeler,St.Andrews) | | | |
| O | Site Improvements | | Allocation: | \$832,175 | \$832,175 |
| | REGION-WIDE | Paving replacement and new parking | | | |
| | REGION-WIDE | Field drainage and erosion repairs/improvements | | | |
| | REGION-WIDE | Repair/replacement of fields,walkways, steps and retaining walls | | | |
| P | Health and Safety | | Allocation: | \$100,000 | \$100,000 |
| | REGION-WIDE | Upgrades to CCTV, Access Card Readers, Security Cameras and improvements for health and safety | | | |

Estimated Total \$10,332,175 \$10,956,157

| | |
|--|---------------------|
| SR Grant (2021-22) - Revised to Actual | \$10,332,175 |
| Deferred SR Revenue (2020-21) | \$623,982 |
| | <u>\$10,956,157</u> |



Report to Committee of the Whole

May 16, 2022

Subject: 2022-2023 School Condition Improvement Grant - School Renewal

Recommendation

This report is for the information of the Board.

Status

Each year several projects for major maintenance are prioritized and funded from the annual Pupil Accommodation Grant – School Renewal but not all prioritized projects can be completed due to the limited amount of funding available. This additional School Condition Improvement (SCI) Grant will allow for completion of backlogged prioritized projects in the 2022-2023 school year. The intent of these prioritized projects is to bring older schools up to current standards.

Appendix A illustrates types of projects for 2022-2023 that will be considered for the SCI Grant – School Renewal.

Background

As per Ministry of Education Memorandum 2022:B04 memorandum dated Feb 17, 2022, the Ministry is investing \$1070M in funding allocated across 72 school boards towards the SCI Grant – School Renewal. This grant is in response to data collected from the Ministry's Condition Assessment Program, which started another five-year cycle of facility audits in 2016 and was completed in 2020.

Renewal needs for school facilities that are five years of age or less or are not assets of the Board (i.e., short-term leases) have not been audited. Under this revised methodology, the Ministry will also ensure that most of the SCI Grant – School Renewal is targeted towards identified major renewal needs, while still providing boards with the flexibility to direct some of the SCI Grant – School Renewal to address other locally identified renewal needs.

The Ministry requires that at least seventy percent (restricted) of the SCI Grant – School Renewal is to be spent on major building components and systems, and at most thirty percent (unrestricted) on building interiors, site, and other components considered non-critical.

The SCI Grant – School Renewal can only be used on depreciable renewal expenditures in schools that are expected to remain open and to address renewal priorities of the Board.

The Ministry has arranged with the Ministry's Condition Assessment Program Administrator, VFA, Inc. (VFA) to support boards with their capital planning and management needs through its VFA Facility Asset Management database. The school

renewal expenditures funded through the SCI Grant – School Renewal must be reported in the VFA Facility Asset Management database.

Financial implications

As per Ministry of Education [Memorandum 2022:B04](#) dated February 17, 2022, the Ministry's allocation to The Waterloo Region District School Board towards the SCI Grant – School Renewal for 2022–2023 is projected to be **\$32,561,332**.

Communications

Once the SCI Grant – School Renewal projects are finalized, resources will be assigned, and school Principals will be advised of upcoming activities to detail the scope of projects and coordinate scheduled activities.

Prepared by: Matthew Gerard, Coordinating Superintendent, Business Services
& Treasurer of the Board
John Veit, Controller, Facility Services
Ron Dallan, Manager of Capital Projects
in consultation with Coordinating Council

**WATERLOO REGION DISTRICT SCHOOL BOARD
BUSINESS SERVICES DIVISION
FACILITY SERVICES DEPARTMENT**

**SCHOOL CONDITION IMPROVEMENT GRANT - SCHOOL RENEWAL
PROJECTS COMPLETED or PLANNED
SEPTEMBER 1, 2022 TO AUGUST 31, 2023**

SCI Grant 2022-23**\$22,792,932****Key Building Components and Systems (Restricted - 70%)**

| | | |
|------------|-------------|---|
| Z25 | REGION-WIDE | Plumbing Improvements |
| Z25 | REGION-WIDE | Heating Ventillation and Air Conditioning (HVAC) Improvements |
| Z20 | REGION-WIDE | Fire Protection |
| Z25 | REGION-WIDE | Electrical Improvements |
| Z33 | REGION-WIDE | Substructure - Foundations, Basement Walls |
| Z33 | REGION-WIDE | Shell/Superstructure - Roofs, Exterior Walls, Windows |

Locally Identified Needs (Unrestricted - 30%)**\$9,768,400**

| | | |
|-----|-------------|--|
| Z23 | REGION-WIDE | Improve Interiors - Stairs, Floor Finishes, Ceilings |
| Z23 | REGION-WIDE | Equipment and Furnishings (eg. fixed items only) |
| Z04 | REGION-WIDE | Special Construction (e.g. Hazardous Waste Removal) |
| Z33 | REGION-WIDE | Demolition |
| Z50 | REGION-WIDE | Building Sitework - Parking Lots, Site Lighting, Pavements, Site Utilities |

TOTAL**\$32,561,332**



Report to Committee of the Whole

May 16, 2022

Subject: Energy and Greenhouse Gas Emissions Update

Recommendation

This report is for the information of the board

Status

2020/21 Energy Use Intensity

Since 2008 the Waterloo Region District School Board (WRDSB) has monitored energy consumption at our schools, outdoor centres and administration and supporting facilities, using weather-normalized Energy Use Intensity (EUI) as a means to identify facilities with optimum performance and those in greater need of attention, and monitor performance year to year. Figure 1 reports the change in total EUI for all Board-owned sites over the last thirteen years.

The Board has experienced a weather-normalized **19.8 percent reduction in our overall EUI** between 2008 and 2021. The reduction in electricity intensity during this period was 24.3 percent, with a reduction in natural gas intensity of 17.8 percent. Figure 2 reports the average EUI by panel. The EUI in all three panels increased this year due to the ventilation measures necessary to reduce COVID-19 transmission, as mandated by the Ministry. The EUI for each school is presented in Appendices A and B. The technical background for these terms and methodology is given in Appendix G.

Figure 1: Total Energy Use Intensity Combined, 2008 to Fiscal Year 2020/21

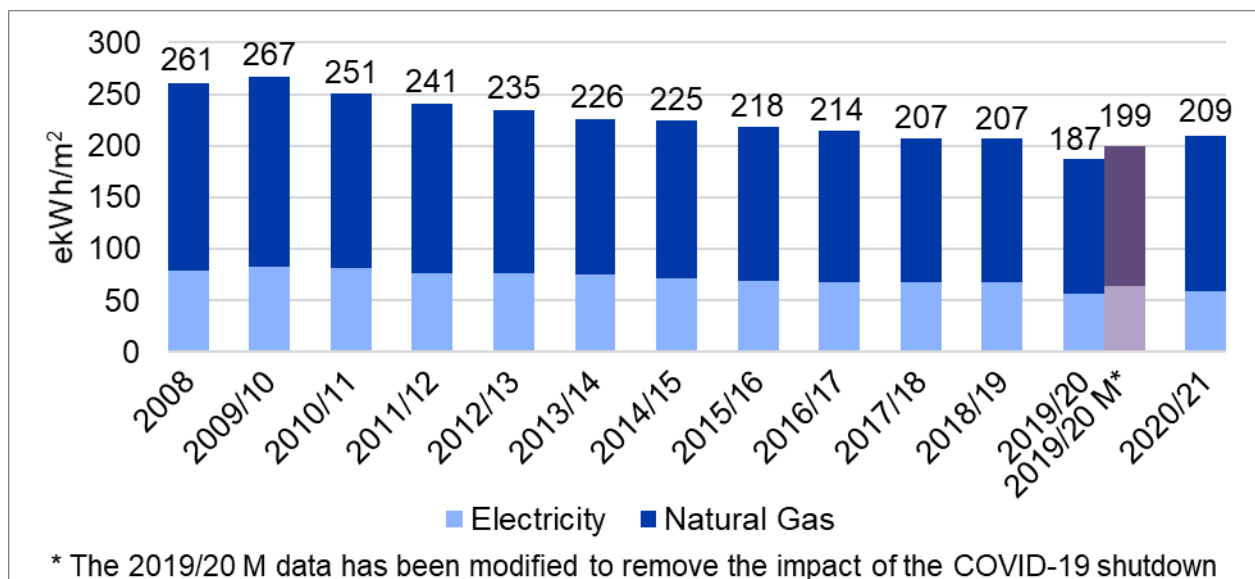
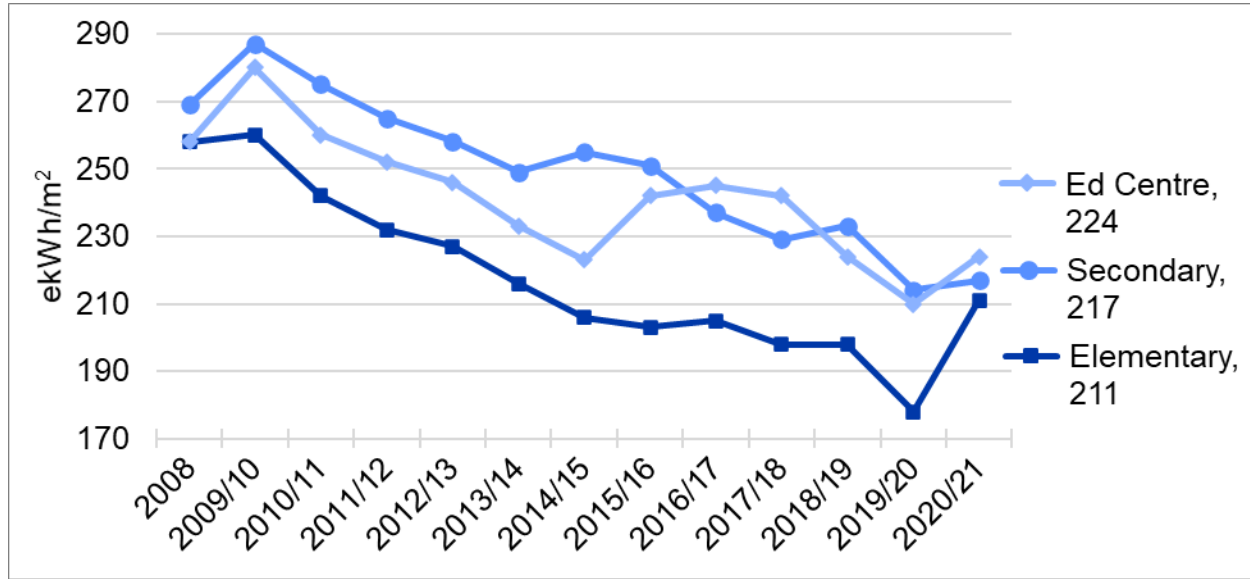


Figure 2: Average Energy Use Intensity by Panel, 2008 to Fiscal Year 2020/21



2020/21 Greenhouse Gas Emissions

Total greenhouse gas (GHG) emissions per square meter (GHG emission intensity) for all Board-owned sites is shown in Figure 3. Figure 4 reports the average GHG emission intensity by panel. Note that this data is not weather normalized. The GHG emission intensity increased this year due to the COVID-19 ventilation requirements. GHG emissions intensities for each school are presented in Appendix C and D.

Total GHG Emission Intensity has reduced thirty-seven percent (37%) since 2008. The Board's GHG emissions are significantly influenced by GHG emissions from electricity generation in Ontario. The **emissions from electricity generation have fallen by eighty percent in Ontario** in the last decade. They were lowest in 2017/18, but they have begun to increase slightly.

Figure 3: Total GHG Emission Intensity Combined, 2008 to Fiscal Year 2020/21

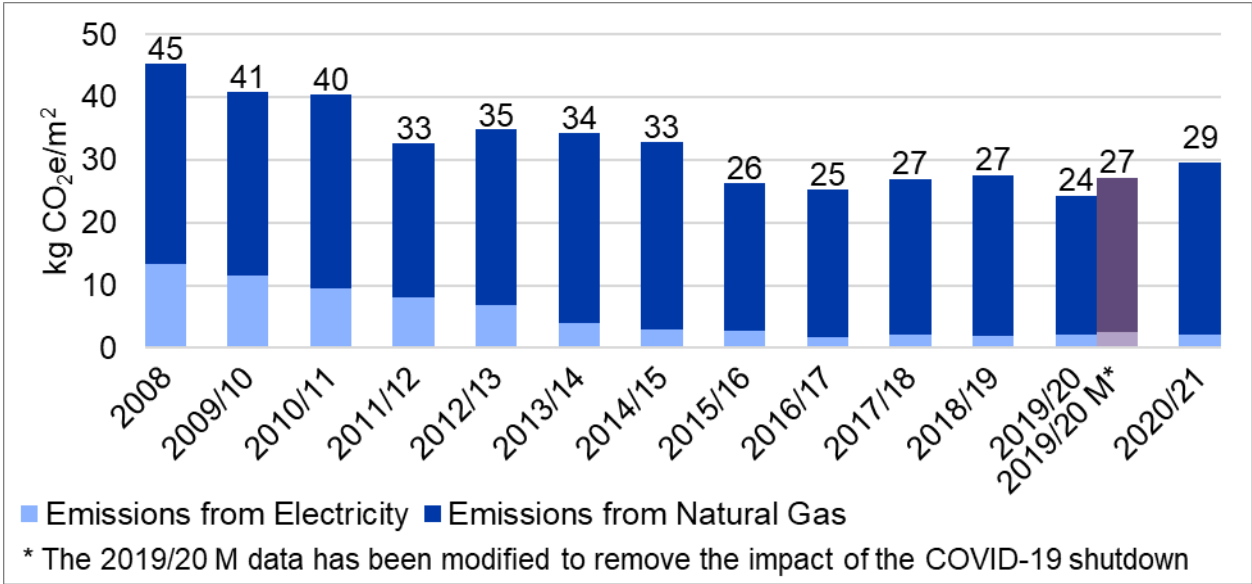
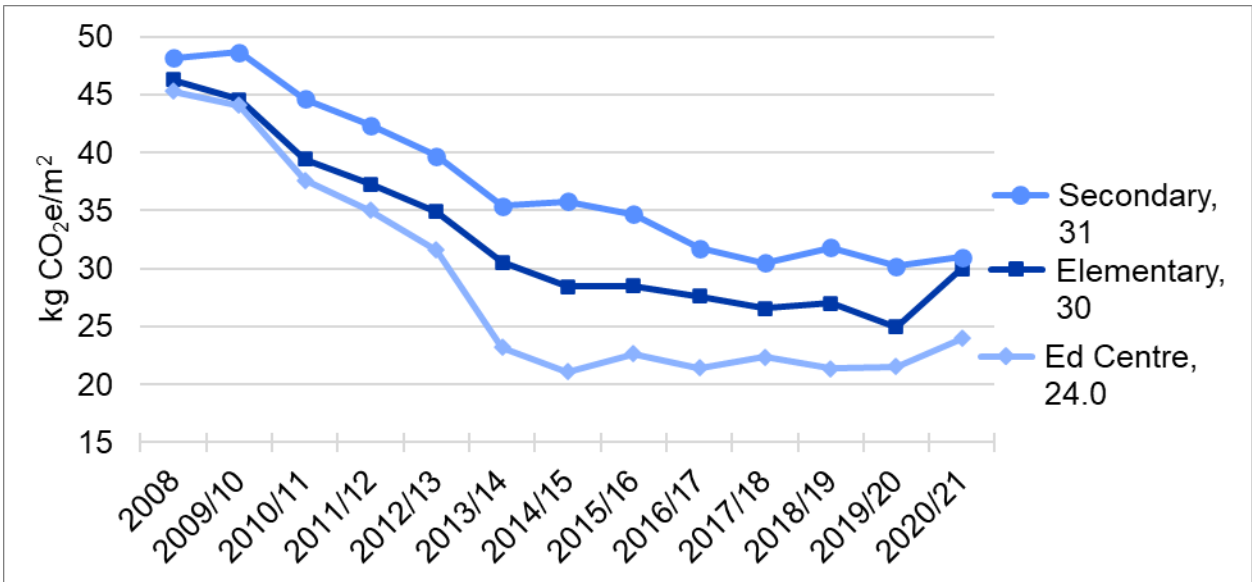


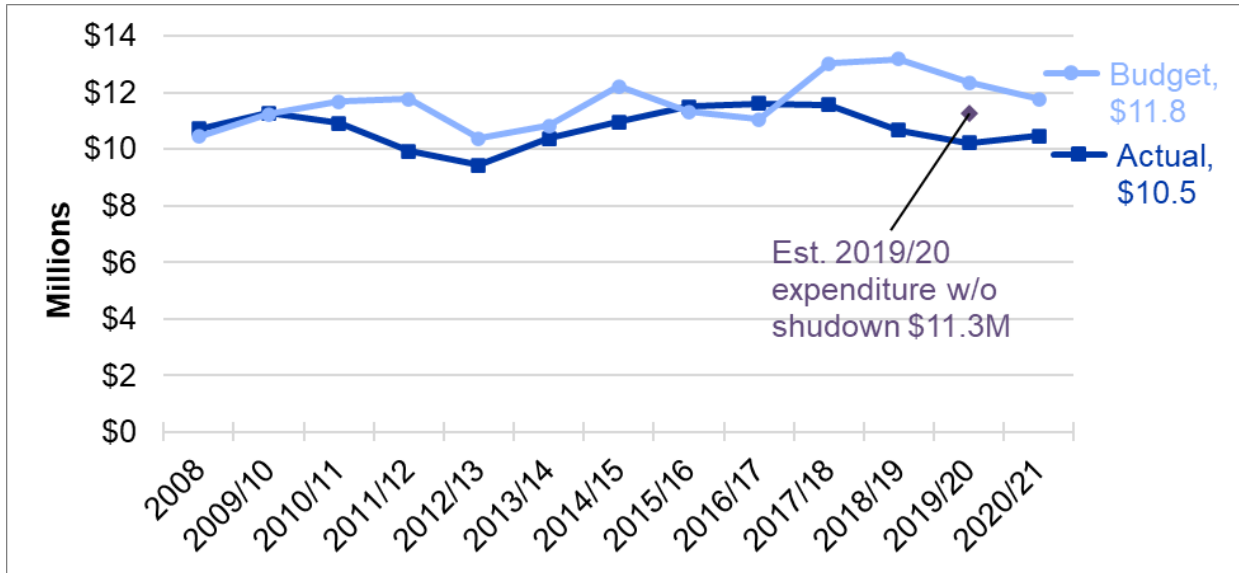
Figure 4: Average GHG Emission Intensity by Panel, 2008 to Fiscal Year 2020/21



Energy Budget and Expenditure

A thirteen-year history of the Board budgets and expenditures for electricity and natural gas is presented in Figure 5 and Appendix E. The Board’s natural gas and electricity budget for 2020/21 was \$11.8M and expenditures were \$10.5M.

Figure 5: Budget and Actual Expenditures, Fiscal Years 2008/09 to 2020/21



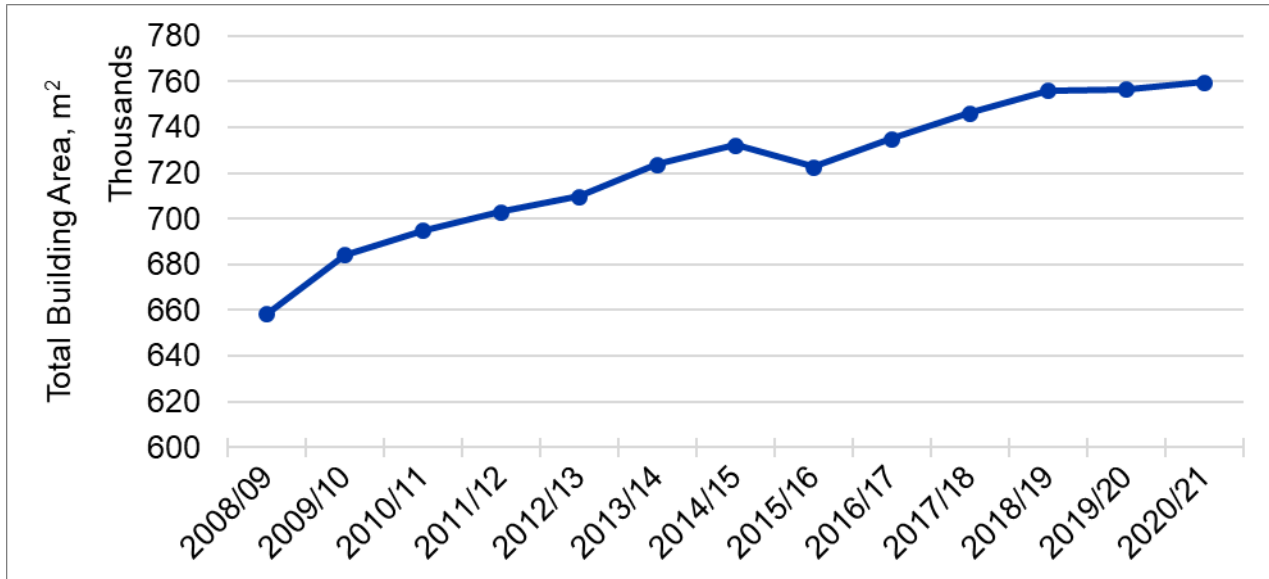
Budget and actual expenses cannot be compared directly year over year as a metric for operational efficiencies, as there are too many variables beyond the control of Facility Services, and the Board as a whole. Consumption and prices are the two drivers of energy expenditures. While consumption can be influenced on the long term with energy conservation strategies discussed below, there are several factors beyond the Board's control:

- Weather (i.e. warmer summer and shoulder season drives cooling demand)
- Hours of operation (i.e. extended use initiatives such as Community Use)
- School closures (i.e. disposal of surplus sites, port-a-packs, and portables)
- Expansion of facilities and square footage (i.e. new schools or school additions)
- User behaviour (influenced through conservation strategy but not controlled)

Energy prices are also outside the Board's control and fluctuate year to year. The best prediction of all relevant variables is made when the budget is created but forecasting weather a year and more away does not allow for a great degree of precision.

It is a significant achievement that the utility budget has only increased thirteen percent since 2008/09, and expenditures have fallen by two percent. As shown in Figure 6, the total building area operated by the WRDSB has increased fifteen percent since 2008/09. As shown in Figure 7, the combined energy price the Board pays has increased eight percent since 2008/09. There has also been a significant expansion in operating hours due to increased community use of schools. **Efficiency gains continue to be the primary reason for the two percent expenditure reduction since 2008/09.**

Figure 6: Total Building Area, Fiscal Years 2008/09 to 2020/21



In 2020/21, **natural gas cost 2.86 cents per ekWh** and **electricity cost 16.2 cents per kWh** with a combined cost for both commodities at 6.74 cents per ekWh. The full history of energy costs per kWh is given in Figure 7. Natural gas costs have begun to increase as both commodity costs and the carbon tax increase. Electricity prices continue to fall as the Ontario Government shifts costs from the Global Adjustment to the tax base, although prices are expected to increase again as nuclear power plants are scheduled to be taken offline for refurbishment and retirement, and temporarily replaced by expensive natural gas generation.

Consumption by commodity is an important factor that drives expenditures. **Natural gas continues to be at a comparatively low cost to electricity**, although the carbon tax is narrowing this gap. A greater reliance on natural gas as a resource for heating continues to be **beneficial for our operational budget but generates greater GHG emissions** than utilizing electricity as a source of heat. The composition of energy consumption and expenditures for each commodity in 2020/21 is presented in Figure 8.

Figure 7: Natural Gas, Electricity and Combined costs per kWh, 2008 to 2020/21

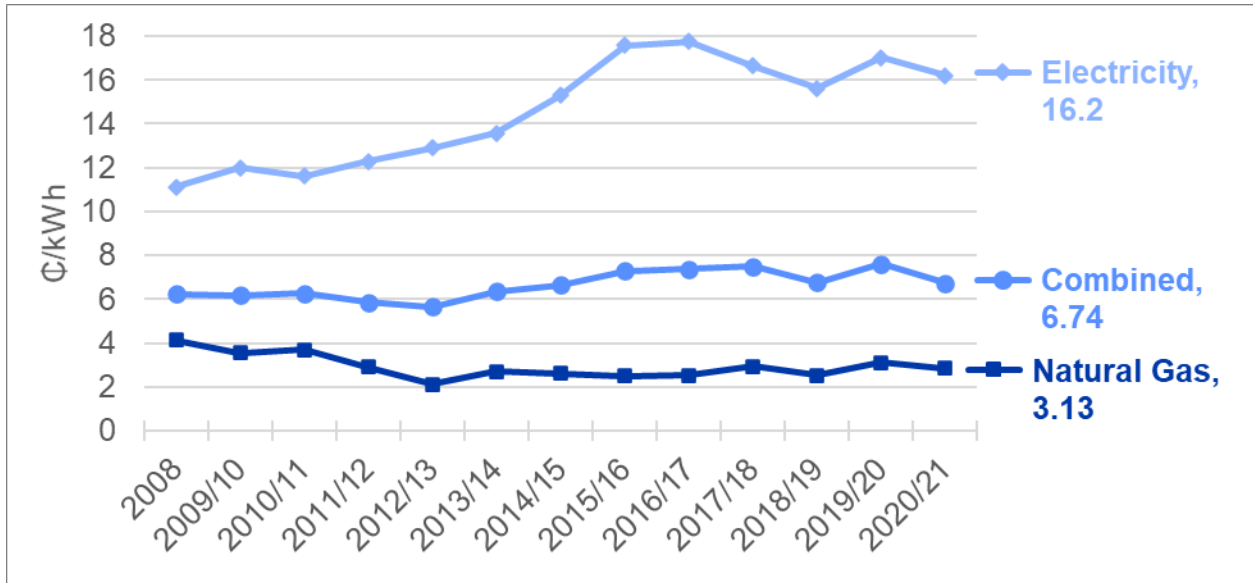
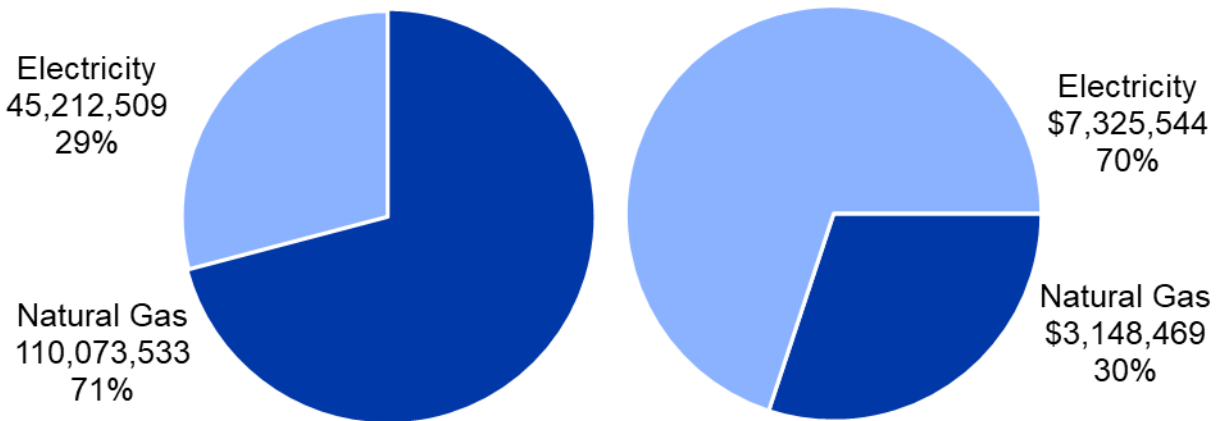
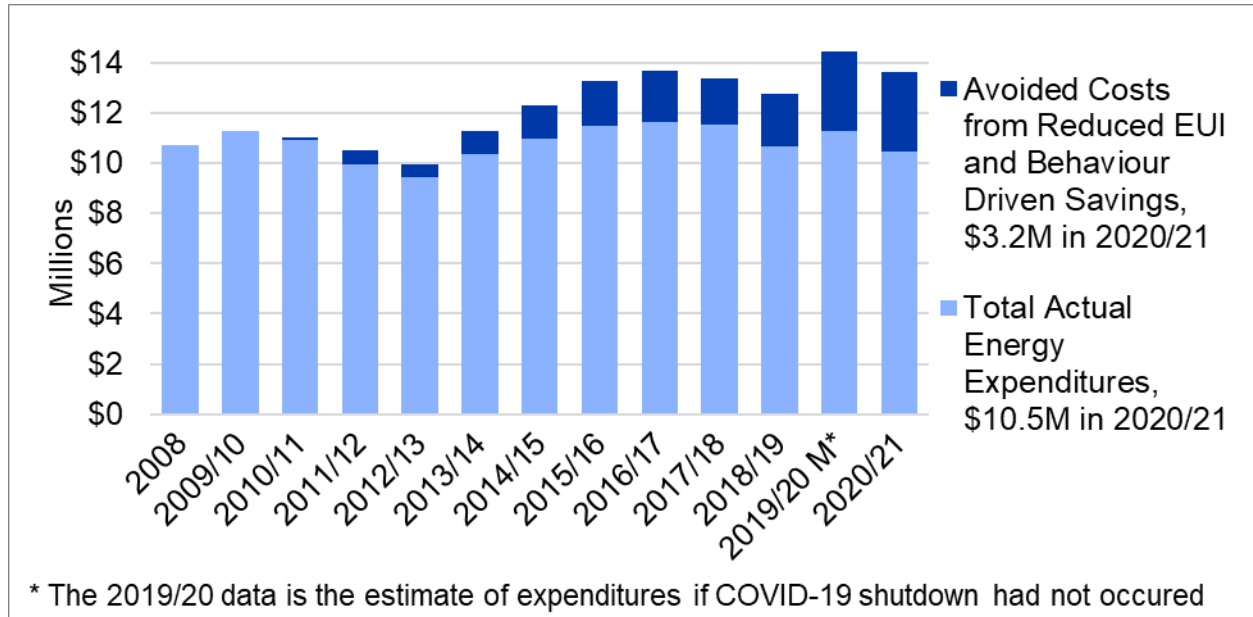


Figure 8: Energy Consumption (ekWh) and Expenditures by Commodity, 2020/21



The reduction in EUI since 2008 has resulted in significant financial savings. **Utility costs have been offset by \$3.2M in Fiscal Year 2020/21**, compared to the operational conditions in 2008. See Figure 9 for details. This figure compares the 2020/21 expenditures to the scenario where the Board operated the 2020/21 building portfolio with the EUI the Board operated at in 2008. This is an annual offset in utility costs that fluctuates based on actual consumption and market prices of energy. **Cumulatively, over the last decade, the reduction in EUI has offset utility costs by \$17.8M.**

Figure 9: Actual Energy Costs and Savings Relative to 2008 Baseline, 2008 to 2020/21



The Energy Conservation Program

This report has detailed the significant success the existing energy conservation program has had in the last twelve years. This program consists of the following efforts:

- Careful collection and monitoring of utility consumption data through an online dashboard and weather normalized annual database
- Upgrading to Light Emitting Diodes (LED) lights controlled by occupancy sensors
- Building Automation Systems with free cooling, schedules and night setbacks
- Demand controlled ventilation using CO₂ sensors
- Memos to staff on use of vestibules and water conservation
- Hiring of students through the Canada Summer Jobs program to support various energy savings initiatives and data analysis
- The Sustainability Working Group, where staff collaborate and share knowledge
- Implementation of a preventative maintenance program
- Requiring new schools to be twenty-five percent more efficient than required by code
- Architectural design briefs for roofs, windows, and vestibules
- Recommissioning of boilers and HVAC equipment
- Use of efficient equipment like condensing boilers/water heaters, compressors
- Alternative methods of cooling classrooms such as destratification fans
- Pilot studies such as new multi zone units, gas-fired heat pump systems, surfactants in boiler loops, load shedding cooling controls for secondary schools, point-of-use utility meters, envelope thermography to find breaches in envelope, and water meters for cooling towers

WRDSB staff also make good use of existing incentive programs. **Since 2009, the Board has received more than \$766k in incentives from the local utilities** and the Save ON Energy program. These incentives continue to be reinvested each year into

the energy conservation program. Appendix F details how these incentives were used in 2020/21.

The Board also operates five photovoltaic solar panel arrays, funded by the Ministry in 2010/11. These projects have generated more than \$466,487 in revenue over 116 months of operation, as detailed in Appendix F.

Commitments

The WRDSB is required to submit an Energy Conservation and Demand Management (ECDM) plan every 5 years by the Electricity Act. The WRDSB submitted the required ECDM plan for the five years following 2017/2018 in 2020. In this plan, the WRDSB accessed plans for the use of capital and operational funds and set a target of an 11.8 percent decrease in EUI from 2017/18 levels by 2022/23. Due to the COVID-19 pandemic, **the WRDSB is not on track to meet the target set in its latest ECDM plan.**

In 2020, the WRDSB became a pledging member of Sustainable Waterloo Region by committing to reduce its GHG emissions intensity by twenty percent from 2018/19 levels by 2028/29. The measures required to achieve this goal are roughly in line with the goal set in the latest ECDM plan. While this target is more than 5 years away, **the WRDSB is not on track to meet the target it has committed to through Sustainable Waterloo Region.**

WRDSB Ranking in the Province

The Ministry of Education began ranking all school boards based on their EUI and Emissions Intensity, among other variables. For 2019/20 (the most recent year where this data is available), the **WRDSB ranked 53 and 56 out of 72 boards**, respectively. **Energy Use and Emissions Intensity** is an opportunity for performance improvements within the WRDSB. Several factors contribute to this reality including a relatively old fleet of buildings, large numbers of single pane windows, and a heavy reliance on portables.

Although the WRDSB has made great strides in the last thirteen years in reducing our energy use, other boards appear to have made greater strides. In some cases, they have benefited from closures of older schools, prioritized replacement of port-a-packs and have made a choice not to cool new classroom spaces.

WRDSB staff have developed an **Accelerated Energy Savings plan to position the WRDSB in the top third of school boards by 2030** and meet our targets and commitments. Achieving this will require the WRDSB to reduce its energy use intensity by forty percent from 2018/19 levels by 2029/30. Staff will bring a subsequent report to the Board in Fall 2022.

Implications for Wellbeing and Equity, Diversity and Inclusion

Eco-anxiety is understood as worry, fear, anxiety or distress caused by the knowledge of climate change and the impact it is having on humanity¹. Numerous news articles in

¹ Clayton, S. 2020. "Climate anxiety: Psychological responses to climate change." *Journal of Anxiety Disorders*, 74, 1022263, doi.org/10.1016/j.janxdis.2020.102263

the last few years report on the impacts this is having on children². Sixty percent of children say they feel very or extremely worried about climate change, and more than forty-five percent say feelings about climate change impact their daily lives³. These patterns of anxiety are exacerbated by governments continually failing to take action on the level that scientists say is required to mitigate the worst of climate change. The impact of increased anxiety on learning is self-evident. In addition, climate change impacts less affluent and racialized communities disproportionately⁴. The WRDSB serves many students with family ties to these areas, and these students are often the same students who experience marginalization. A strong energy conservation program that involves students is one component of what is necessary to address this eco-anxiety and inequality.

Financial Implications

While the utility budget represents less than two percent of the overall Board budget, the active management of the utility portfolio is required to mitigate risk exposure as cost overruns or savings can have a significant impact on the operating budget. There is no way to reduce energy expenditure in the middle of a budget year. Long-term planning and action is the only way to reduce the financial risk of rising energy prices.

Energy prices are expected to increase in the coming decade. Electricity prices are expected to rise as nuclear power plants are taken offline for refurbishment or retirement and that capacity is replaced by expensive natural gas generation. Natural gas prices are expected to rise especially rapidly as the carbon tax continues to increase and commodity costs increase due to market changes. These include increased exports from the United States to Mexico, Asia and Europe due to the crisis in Ukraine. North America has enjoyed low natural gas prices relative to the rest of the world, but the larger the volume of exports, the more the North American market is exposed to these global prices.

The rate of increase is likely to exceed the ability of the current energy conservation program to maintain budgets flat solely through the current energy efficiency measures. Without accelerated action, staff estimate that the utility budget for the board could be \$16M by 2029/30, an increase of \$4.6M.

² Atter, Heidi. 2021. "Climate change anxiety affecting children, but parents acknowledging it can help: social worker." *CBC News*. August 19. <https://www.cbc.ca/news/canada/saskatchewan/ecoanxiety-children-youth-1.6146470>.

Rodriguez, Jeremiah. 2021. "Eco-anxiety: Young Canadians report climate change impact on their mental health." *CTV News*. October 7. <https://www.ctvnews.ca/climate-and-environment/eco-anxiety-young-canadians-report-climate-change-impact-on-their-mental-health-1.5615253>.

³ Harrabin, Roger. 2021. "Climate change: Young people very worried - survey." *BBC News*. September 14. <https://www.bbc.com/news/world-58549373>.

⁴ Levy, Barry S. Patz, Jonathan A. 2015 "Climate Change, Human Rights, and Social Justice." *Annals of Global Health*. Volume 81, Issue 3. <https://doi.org/10.1016/j.aogh.2015.08.008>.

Communications

The Electricity Act requires that this **Energy Update be presented to the Board and available publicly on an annual basis**. In addition, the Energy Conservation and Demand Management Plan and the Energy Consumption and Greenhouse Gas Emission annual reports, as issued through the UCD, are available in hard copy at the Education Centre or online for public access as required under the Electricity Act:

- [Energy Conservation and Demand Management Plan](#)
- [Energy Conservation at the Waterloo Region District School Board](#)

It is intended that this report be shared with the Sustainability Working Group, the Elementary Accommodation Committee (EAC), and Secondary Accommodation Committee (SAC) in an effort to enhance awareness and build a knowledge base and momentum for energy conservation in the schools.

Prepared by: Matthew Gerard, Coordinating Superintendent, Business Services
& Treasurer of the Board
John Veit, Controller, Facility Services
Ron Dallan, Manager of Capital Projects
Lou Lima, Manager of Mechanical, Electrical and Environmental Services
Caleb Gingrich Regehr, Supervisor of Energy Conservation
in consultation with Coordinating Council.

Appendix G – Technical Background and Methodology

The unit equivalent kilowatt-hours (ekWh) allows electricity, normally measured in kWh, and natural gas and propane, normally measured in cubic meters and liters, respectively, to be added together. Natural gas and propane use is highly weather dependant as it is mostly used for space heating, so heating degree days are used to weather normalize the figures, removing the impact of weather which allows for a fair comparison between years. Electricity is not weather normalized, as the majority of its use is not weather dependant. The total energy consumption is divided by the total floor area of the board's asset portfolio so that the effect of additional building area from new schools and school additions is removed from the comparison. This results in the metric Energy Use Intensity, measured in ekWh per square meter. These figures include portables and port-a-packs. Leased facilities such as 151 Weber are excluded.

Unlike 2019-20, data for 2020-21 was not adjusted for the impact of COVID-19 due to the complexity of these impacts in 2020-21. In 2020-21, ventilation measures (increased outdoor air, improved filters, HEPA units, etc.) increased energy consumption from pre-COVID behaviour, while school shutdowns in the second half of the year decreased it. The ventilation measures are estimated to have increased natural gas usage by 13 percent. The school closures reduced energy use over these periods by approximately 10 percent. As COVID-19 and the ventilation adaptations are likely to continue to impact energy data, and there are long-term ways WRDSB can mitigate the energy impact of these adaptations, this report will no longer adjust the data for these impacts.

GHG emissions are calculated using the emission factors reported in Environment Canada's National Inventory Report to the UN Framework Convention on Climate Change. Emissions are reported in units of kilograms of carbon dioxide equivalent (kg CO₂e).

**WATERLOO REGION DISTRICT SCHOOL BOARD
BUSINESS SERVICES DIVISION
FACILITY SERVICES DEPARTMENT**

**ENERGY UPDATE
ANNUAL ENERGY USE INTENSITY (ekWh/m²) - ELEMENTARY SCHOOLS**

| School | 08 | 09/10 | 10/11 | 11/12 | 12/13 | 13/14 | 14/15 | 15/16 | 16/17 | 17/18 | 18/19 | 19/20 | 20/21 |
|------------------------|------|-------|-------|-------|-------|-------|-------|-------|-------|-------|-------|-------|-------|
| A R Kaufman P.S. | 212 | 267 | 244 | 234 | 239 | 229 | 186 | 204 | 176 | 185 | 199 | 158 | 163 |
| Abraham Erb P.S. | 189 | 166 | 173 | 167 | 171 | 162 | 157 | 148 | 148 | 146 | 150 | 134 | 187 |
| Alpine P.S. | 287 | 330 | 318 | 334 | 307 | 284 | 285 | 293 | 296 | 286 | 252 | 255 | 291 |
| Avenue Road P.S. | 242 | 400 | 331 | 197 | 170 | 180 | 173 | 172 | 180 | 173 | 180 | 173 | 215 |
| Ayr P.S. | 238 | 292 | 277 | 268 | 257 | 246 | 220 | 213 | 209 | 212 | 217 | 202 | 228 |
| Baden P.S. | 232 | 176 | 168 | 156 | 161 | 163 | 166 | 153 | 155 | 160 | 160 | 147 | 181 |
| Blair O.E.C. | Un. | 297 | 267 | 292 | 271 | 266 | 250 | 280 | 205 | 220 | 229 | 200 | 203 |
| Blair Road P.S. | 422 | 249 | 224 | 246 | 212 | 214 | 208 | 214 | 191 | 190 | 196 | 182 | 262 |
| Breslau P.S. | 336 | 393 | 268 | 267 | 248 | 330 | 236 | 226 | 231 | 219 | 213 | 178 | 249 |
| Bridgeport P.S. | 246 | 241 | 245 | 269 | 262 | 186 | 160 | 161 | 108 | 172 | 176 | 159 | 197 |
| Brigadoon P.S. | 199 | 296 | 213 | 181 | 185 | 188 | 162 | 154 | 169 | 168 | 168 | 151 | 179 |
| Cedar Creek P.S. | 211 | 206 | 182 | 174 | 175 | 184 | 168 | 174 | 187 | 185 | 187 | 172 | 192 |
| Cedarbrae P.S. | 289 | 245 | 308 | 264 | 255 | 245 | 250 | 241 | 238 | 225 | 258 | 228 | 297 |
| Centennial (Camb) P.S. | 269 | 286 | 254 | 251 | 266 | 244 | 224 | 228 | 237 | 226 | 230 | 215 | 268 |
| Centennial (Wloo) P.S. | 389 | 264 | 244 | 246 | 247 | 253 | 233 | 226 | 232 | 238 | 232 | 235 | 204 |
| Central P.S. | 269 | 294 | 268 | 284 | 277 | 272 | 261 | 274 | 265 | 214 | 223 | 207 | 265 |
| Chalmers Street P.S. | 265 | 274 | 288 | 316 | 267 | 253 | 232 | 229 | 204 | 206 | 211 | 191 | 218 |
| Chicopee Hills P.S. | N.O. | N.O. | N.O. | N.O. | N.O. | N.O. | N.O. | N.O. | N.O. | 151 | 125 | 115 | 154 |
| Clemens Mill P.S. | 223 | 219 | 206 | 209 | 213 | 203 | 221 | 248 | 225 | 219 | 212 | 174 | 184 |
| Conestogo P.S. | 261 | 271 | 252 | 273 | 244 | 235 | 221 | 249 | 236 | 212 | 220 | 189 | 300 |
| Coronation P.S. | 440 | 378 | 364 | 326 | 329 | 318 | 327 | 342 | 354 | 343 | 349 | 336 | 288 |
| Country Hills P.S. | 190 | 224 | 229 | 301 | 268 | 226 | 215 | 179 | 168 | 170 | 175 | 163 | 196 |
| Courtland Senior P.S. | 246 | 254 | 244 | 219 | 223 | 269 | 222 | 194 | 182 | 203 | 210 | 170 | 227 |
| Crestview P.S. | 242 | 322 | 299 | 279 | 311 | 291 | 313 | 288 | 292 | 288 | 266 | 210 | 245 |
| Dickson P.S. | 184 | 183 | 185 | 161 | 171 | 169 | 96 | Dis. | Dis. | Dis. | Dis. | Dis. | Dis. |
| Doon P.S. | 279 | 304 | 281 | 219 | 211 | 200 | 164 | 151 | 167 | 196 | 189 | 165 | 221 |
| Driftwood Park P.S. | 232 | 199 | 183 | 185 | 180 | 179 | 190 | 151 | 121 | 159 | 163 | 127 | 161 |
| Edna Staebler P.S. | N.O. | 171 | 159 | 149 | 158 | 155 | 155 | 140 | 143 | 142 | 145 | 131 | 179 |
| Elgin Street P.S. | 196 | 226 | 204 | 187 | 196 | 187 | 179 | 194 | 202 | 220 | 225 | 204 | 226 |
| Elizabeth Ziegler P.S. | 272 | 278 | 268 | 251 | 226 | 234 | 236 | 234 | 215 | 180 | 187 | 171 | 188 |
| Empire P.S. | 238 | 246 | 239 | 227 | 239 | 158 | 203 | 209 | 208 | 207 | 210 | 198 | 248 |
| Floradale P.S. | 209 | 191 | 218 | 233 | 232 | 202 | 176 | 217 | 200 | 177 | 189 | 174 | 225 |
| Forest Glen P.S. | 281 | 260 | 240 | 221 | 202 | 228 | 210 | 195 | 201 | 205 | 210 | 197 | 242 |
| Forest Hill P.S. | 316 | 269 | 246 | 248 | 208 | 196 | 192 | 224 | 213 | 227 | 217 | 219 | 197 |
| Franklin P.S. | 236 | 258 | 233 | 234 | 227 | 215 | 206 | 215 | 260 | 241 | 216 | 200 | 277 |
| Glencairn P.S. | 156 | 177 | 182 | 173 | 187 | 210 | 181 | 168 | 181 | 185 | 162 | 176 | 174 |
| GrandView (Camb) P.S. | 230 | 251 | 239 | 143 | 168 | 171 | 159 | 150 | 169 | 156 | 163 | 137 | 189 |
| Grandview (NH) P.S. | 197 | 326 | 228 | 233 | 217 | 215 | 187 | 199 | 187 | 189 | 204 | 192 | 244 |
| Groh P.S. | N.O. | N.O. | N.O. | N.O. | N.O. | N.O. | N.O. | N.O. | N.O. | 125 | 136 | 109 | 137 |
| Hespeler P.S. | 206 | 205 | 184 | 166 | 168 | 177 | 173 | 158 | 163 | 165 | 166 | 156 | 146 |
| Highland P.S. | 326 | 281 | 275 | 204 | 189 | 202 | 201 | 211 | 213 | 203 | 210 | 189 | 263 |
| Hillcrest P.S. | 232 | 221 | 209 | 191 | 205 | 181 | 179 | 157 | 152 | 158 | 169 | 161 | 230 |
| Howard Robertson P.S. | 407 | 343 | 335 | 280 | 287 | 257 | 264 | 281 | 185 | 285 | 282 | 267 | 313 |
| J F Carmichael P.S. | 217 | 198 | 192 | 183 | 161 | 169 | 164 | 174 | 169 | 163 | 176 | 168 | 236 |
| J.W. Gerth P.S. | N.O. | 125 | 137 | 120 | 141 | 146 | 147 | 133 | 159 | 144 | 139 | 118 | 173 |
| Janet Metcalf P.S. | N.O. | N.O. | N.O. | N.O. | N.O. | N.O. | N.O. | N.O. | N.O. | N.O. | 151 | 115 | 132 |
| Jean Steckle P.S. | N.O. | N.O. | N.O. | N.O. | N.O. | 146 | 119 | 122 | 121 | 127 | 125 | 102 | 140 |
| John Darling P.S. | 179 | 215 | 170 | 171 | 177 | 180 | 192 | 181 | 180 | 178 | 180 | 156 | 211 |
| John Mahood P.S. | 323 | 258 | 228 | 221 | 213 | 189 | 181 | 178 | 173 | 178 | 192 | 164 | 199 |
| Keatsway P.S. | 250 | 197 | 172 | 154 | 132 | 149 | 144 | 143 | 147 | 147 | 147 | 130 | 161 |
| King Edward P.S. | 594 | 268 | 261 | 252 | 256 | 243 | 272 | 332 | 266 | 236 | 211 | 203 | 220 |
| Lackner Woods P.S. | 192 | 213 | 203 | 210 | 209 | 215 | 214 | 199 | 196 | 223 | 212 | 179 | 219 |
| Laurelwood P.S. | 223 | 235 | 216 | 220 | 205 | 204 | 199 | 186 | 178 | 177 | 181 | 169 | 196 |
| Laurentian P.S. | 293 | 321 | 303 | 264 | 258 | 299 | 356 | 255 | 285 | 242 | 224 | 192 | 248 |
| Lester B. Pearson P.S. | 217 | 173 | 171 | 173 | 175 | 161 | 163 | 150 | 155 | 142 | 146 | 129 | 210 |
| Lexington P.S. | 307 | 287 | 291 | 261 | 256 | 289 | 223 | 237 | 236 | 230 | 231 | 217 | 236 |
| Lincoln Avenue P.S. | 289 | 358 | 332 | 330 | 313 | 149 | 143 | Dis. | Dis. | Dis. | Dis. | Dis. | Dis. |
| Lincoln Heights P.S. | 298 | 258 | 232 | 233 | 234 | 209 | 197 | 286 | 289 | 213 | 211 | 206 | 233 |
| Linwood P.S. | 356 | 268 | 252 | 273 | 247 | 248 | 234 | 244 | 229 | 210 | 206 | 193 | 219 |

**WATERLOO REGION DISTRICT SCHOOL BOARD
BUSINESS SERVICES DIVISION
FACILITY SERVICES DEPARTMENT**

**ENERGY UPDATE
ANNUAL ENERGY USE INTENSITY (ekWh/m²) - ELEMENTARY SCHOOLS**

| School | 08 | 09/10 | 10/11 | 11/12 | 12/13 | 13/14 | 14/15 | 15/16 | 16/17 | 17/18 | 18/19 | 19/20 | 20/21 |
|--|------------|--------------|--------------|--------------|--------------|--------------|--------------|--------------|--------------|--------------|--------------|--------------|--------------|
| MacGregor Sr P.S. | 201 | 212 | 204 | 201 | 202 | 194 | 188 | 202 | 198 | 204 | 222 | 225 | 219 |
| MacKenzie King P.S. | 294 | 319 | 299 | 313 | 281 | 295 | 211 | 214 | 220 | 214 | 208 | 198 | 225 |
| Manchester P.S. | 281 | 316 | 304 | 286 | 258 | 246 | 189 | 176 | 157 | 138 | 163 | 151 | 175 |
| Margaret Avenue P.S. | 229 | 285 | 198 | 236 | 237 | 191 | 243 | 259 | 369 | 238 | 235 | 232 | 265 |
| Mary Johnston P.S. | 174 | 176 | 176 | 175 | 165 | 180 | 166 | 163 | 160 | 155 | 158 | 145 | 181 |
| McQuarrie Centre | 539 | 531 | 561 | 411 | 522 | 421 | 294 | 262 | 272 | 261 | 250 | 278 | 227 |
| Meadowlane P.S. | 225 | 271 | 270 | 255 | 247 | 246 | 228 | 211 | 257 | 251 | 226 | 196 | 233 |
| Millen Woods P.S. | N.O. | N.O. | 196 | 153 | 162 | 165 | 149 | 152 | 155 | 156 | 156 | 139 | 206 |
| Moffat Creek P.S. | N.O. | N.O. | N.O. | N.O. | 138 | 123 | 114 | 134 | 132 | 128 | 99 | 105 | 101 |
| N A MacEachern P.S. | 326 | 338 | 317 | 250 | 256 | 248 | 276 | 214 | 203 | 197 | 151 | 212 | 293 |
| New Dawn | 412 | 424 | 403 | 430 | 368 | 260 | 204 | 166 | 170 | 146 | 347 | 348 | 271 |
| New Dundee P.S. | 188 | 215 | 205 | 209 | 208 | 189 | 192 | 193 | 195 | 198 | 195 | 184 | 208 |
| Northlake Woods P.S. | 311 | 234 | 241 | 234 | 217 | 195 | 189 | 201 | 211 | 194 | 209 | 180 | 182 |
| Park Manor P.S. | 341 | 313 | 284 | 272 | 276 | 273 | 271 | 206 | 335 | 353 | 355 | 234 | 210 |
| Parkway P.S. | 289 | 260 | 256 | 280 | 337 | 260 | 234 | 224 | 215 | 233 | 223 | 217 | 278 |
| Pioneer Park P.S. | 236 | 274 | 248 | 255 | 260 | 219 | 215 | 208 | 235 | 225 | 198 | 194 | 234 |
| Preston P.S. | 180 | 188 | 194 | 191 | 191 | 175 | 157 | 158 | 166 | 168 | 168 | 155 | 199 |
| Prueter P.S. | 169 | 286 | 277 | 219 | 259 | 239 | 190 | 201 | 212 | 212 | 204 | 217 | 249 |
| Queen Elizabeth P.S. | 220 | 252 | 251 | 277 | 268 | 232 | 200 | 229 | 271 | 241 | 232 | 221 | 206 |
| Queensmount Sr P.S. | 400 | 309 | 342 | 324 | 258 | 282 | 321 | 252 | 257 | 304 | 255 | 150 | 155 |
| Riverside P.S. | N.O. | N.O. | N.O. | N.O. | N.O. | N.O. | N.O. | N.O. | 141 | 136 | 136 | 116 | 149 |
| Riverside (old location) | 171 | 217 | 175 | 175 | 186 | 151 | 128 | 126 | 87 | 91 | 94 | 91 | 86 |
| Rockway P.S. | 265 | 311 | 281 | 311 | 257 | 311 | 265 | 311 | 299 | 285 | 299 | 217 | 242 |
| Rosemount P.S. | 245 | 299 | 287 | 269 | 271 | 267 | 294 | 303 | 306 | 292 | Dis. | Dis. | Dis. |
| Ryerson P.S. | 260 | 264 | 246 | 199 | 207 | 200 | 192 | 176 | 189 | 200 | 173 | 140 | 205 |
| Saginaw P.S. | 250 | 281 | 248 | 232 | 251 | 237 | 229 | 232 | 223 | 218 | 207 | 185 | 272 |
| Sandhills P.S. | 238 | 251 | 226 | 224 | 246 | 231 | 202 | 193 | 205 | 194 | 189 | 172 | 253 |
| Sandowne P.S. | 285 | 206 | 221 | 293 | 274 | 246 | 255 | 238 | 226 | 181 | 175 | 170 | 185 |
| Sheppard P.S. | 224 | 277 | 268 | 249 | 241 | 245 | 237 | 217 | 212 | 252 | 230 | 200 | 236 |
| Silverheights P.S. | 229 | 209 | 203 | 186 | 183 | 157 | 143 | 143 | 155 | 143 | 148 | 132 | 177 |
| Sir Adam Beck P.S. | N.O. | N.O. | 124 | 164 | 130 | 132 | 130 | 131 | 131 | 132 | 132 | 121 | 152 |
| Smithson P.S. | 216 | 259 | 249 | 255 | 250 | 191 | 235 | 228 | 222 | 234 | 222 | 221 | 251 |
| Southridge P.S. | 284 | 318 | 294 | 183 | 287 | 269 | 300 | 255 | 290 | 292 | 288 | 242 | 315 |
| St Andrew's P.S. | 247 | 191 | 196 | 173 | 174 | 169 | 170 | 175 | 156 | 164 | 158 | 154 | 178 |
| St Jacobs P.S. | 236 | 253 | 250 | 235 | 239 | 233 | 218 | 220 | 223 | 223 | 223 | 239 | 281 |
| Stanley Park P.S. | 299 | 331 | 314 | 299 | 280 | 309 | 256 | 246 | 270 | 251 | 282 | 243 | 280 |
| Stewart Avenue P.S. | 270 | 306 | 191 | 170 | 179 | 163 | 166 | 171 | 190 | 169 | 170 | 152 | 194 |
| Suddaby P.S. | 149 | 197 | 192 | 192 | 146 | 154 | 153 | 151 | 148 | 150 | 151 | 135 | 169 |
| Sunnyside P.S. | 226 | 243 | 218 | 198 | 205 | 204 | 204 | 188 | 185 | 186 | 202 | 174 | 184 |
| Tait Street P.S. | 227 | 243 | 241 | 229 | 230 | 236 | 173 | 173 | 180 | 177 | 180 | 169 | 210 |
| Three Bridges P.S. | 193 | 200 | 187 | 193 | 169 | 175 | 92 | Dis. | Dis. | Dis. | Dis. | Dis. | Dis. |
| Trillium P.S. | 262 | 342 | 255 | 251 | 253 | 245 | 221 | 239 | 243 | 227 | 250 | 231 | 212 |
| Vista Hills P.S. | N.O. | N.O. | N.O. | N.O. | N.O. | N.O. | N.O. | N.O. | 144 | 131 | 129 | 128 | 126 |
| W.T. Townshend P.S. | 158 | 161 | 156 | 139 | 147 | 151 | 141 | 138 | 129 | 133 | 134 | 119 | 165 |
| Wellesley P.S. | 243 | 261 | 252 | 242 | 243 | 235 | 219 | 202 | 215 | 205 | 196 | 177 | 193 |
| Westheights P.S. | 309 | 339 | 255 | 232 | 235 | 228 | 232 | 229 | 210 | 233 | 210 | 181 | 233 |
| Westmount P.S. | 244 | 256 | 248 | 223 | 241 | 235 | 371 | 166 | 133 | 137 | 128 | 99 | 162 |
| Westvale P.S. | 151 | 145 | 141 | 128 | 140 | 132 | 131 | 125 | 129 | 132 | 151 | 127 | 168 |
| William G. Davis P.S. | 308 | 410 | 331 | 328 | 303 | 288 | 270 | 277 | 282 | 261 | 217 | 237 | 215 |
| Williamsburg P.S. | 159 | 149 | 145 | 149 | 150 | 154 | 153 | 139 | 157 | 145 | 149 | 133 | 167 |
| Wilson Avenue P.S. | 225 | 185 | 234 | 223 | 226 | 226 | 214 | 181 | 192 | 181 | 195 | 183 | 205 |
| Winston Churchill P.S. | 217 | 234 | 216 | 163 | 179 | 178 | 194 | 201 | 207 | 194 | 196 | 177 | 196 |
| Woodland Park P.S. | 177 | 191 | 179 | 167 | 162 | 152 | 152 | 142 | 139 | 127 | 139 | 130 | 156 |
| Wrigley's Corners O.E.C. | Un. | 251 | 225 | 282 | 236 | 230 | 244 | 249 | 223 | 228 | 255 | 201 | 190 |
| Average Energy Use Intensity (ekWh/m²) | 258 | 260 | 242 | 231 | 227 | 216 | 206 | 203 | 205 | 198 | 197 | 179 | 211 |

N.O. - Not Open

Un. - Unavailable

Dis. - Disposed

**WATERLOO REGION DISTRICT SCHOOL BOARD
BUSINESS SERVICES DIVISION
FACILITY SERVICES DEPARTMENT**

ENERGY UPDATE

ANNUAL ENERGY USE INTENSITY (ekWh/m²) - SECONDARY SCHOOLS

| School | 08 | 09/10 | 10/11 | 11/12 | 12/13 | 13/14 | 14/15 | 15/16 | 16/17 | 17/18 | 18/19 | 19/20 | 20/21 |
|--|------------|--------------|--------------|--------------|--------------|--------------|--------------|--------------|--------------|--------------|--------------|--------------|--------------|
| Bluevale C.I. | 274 | 291 | 237 | 249 | 255 | 241 | 240 | 231 | 214 | 230 | 228 | 242 | 235 |
| Cameron Heights C.I. | 385 | 379 | 368 | 357 | 337 | 338 | 597 | 398 | 358 | 313 | 305 | 259 | 189 |
| Eastwood C.I. | 211 | 237 | 221 | 213 | 224 | 249 | 228 | 229 | 198 | 205 | 239 | 191 | 219 |
| Elmira District S.S. | 278 | 303 | 277 | 258 | 238 | 227 | 238 | 237 | 247 | 220 | 239 | 219 | 234 |
| Forest Heights C.I. | 325 | 328 | 321 | 341 | 287 | 273 | 263 | 247 | 257 | 296 | 295 | 239 | 247 |
| Galt C.I. | 254 | 248 | 258 | 296 | 287 | 273 | 262 | 265 | 262 | 241 | 254 | 241 | 220 |
| Glenview Park S.S. | 275 | 298 | 313 | 284 | 275 | 242 | 218 | 218 | 201 | 201 | 202 | 190 | 193 |
| Grand River C.I. | 244 | 283 | 264 | 246 | 260 | 250 | 254 | 260 | 228 | 220 | 227 | 225 | 201 |
| Huron Heights S.S. | 252 | 280 | 282 | 264 | 272 | 238 | 224 | 247 | 236 | 226 | 222 | 210 | 212 |
| Jacob Hespeler S.S. | 219 | 281 | 290 | 250 | 265 | 249 | 211 | 249 | 209 | 184 | 196 | 184 | 224 |
| Kitchener-Waterloo C. & V.S. | 291 | 269 | 266 | 251 | 253 | 261 | 232 | 229 | 226 | 223 | 229 | 196 | 198 |
| Preston H.S. | 260 | 306 | 267 | 259 | 257 | 260 | 245 | 259 | 257 | 254 | 239 | 235 | 228 |
| Sir John A. Macdonald S.S. | 246 | 257 | 242 | 240 | 218 | 205 | 199 | 210 | 210 | 206 | 192 | 182 | 222 |
| Southwood S.S. | 275 | 225 | 193 | 177 | 164 | 162 | 156 | 158 | 161 | 157 | 160 | 156 | 154 |
| Waterloo C.I. | 265 | 278 | 272 | 249 | 256 | 246 | 233 | 240 | 242 | 240 | 239 | 194 | 214 |
| Waterloo-Oxford District S.S. | 243 | 322 | 321 | 307 | 281 | 271 | 274 | 283 | 265 | 248 | 260 | 255 | 284 |
| Average Energy Use Intensity (ekWh/m²) | 269 | 287 | 275 | 265 | 258 | 249 | 255 | 251 | 237 | 229 | 233 | 214 | 217 |
| Education Centre (ekWh/m²) | 258 | 280 | 260 | 252 | 246 | 233 | 223 | 242 | 245 | 242 | 224 | 210 | 224 |

**WATERLOO REGION DISTRICT SCHOOL BOARD
BUSINESS SERVICES DIVISION
FACILITY SERVICES DEPARTMENT**

ENERGY UPDATE

ANNUAL GREENHOUSE GAS EMISSION INTENSITY (kg CO₂e/m²) - ELEMENTARY SCHOOLS

| School | 08 | 09/10 | 10/11 | 11/12 | 12/13 | 13/14 | 14/15 | 15/16 | 16/17 | 17/18 | 18/19 | 19/20 | 20/21 |
|------------------------|------|-------|-------|-------|-------|-------|-------|-------|-------|-------|-------|-------|-------|
| A R Kaufman P.S. | 38 | 45 | 39 | 36 | 35 | 30 | 22 | 27 | 21 | 22 | 24 | 20 | 21 |
| Abraham Erb P.S. | 34 | 28 | 27 | 25 | 25 | 21 | 20 | 19 | 19 | 18 | 18 | 18 | 27 |
| Alpine P.S. | 51 | 56 | 52 | 54 | 47 | 41 | 41 | 43 | 43 | 40 | 34 | 38 | 42 |
| Avenue Road P.S. | 44 | 70 | 57 | 33 | 26 | 25 | 24 | 24 | 25 | 23 | 24 | 25 | 31 |
| Ayr P.S. | 43 | 52 | 48 | 46 | 42 | 39 | 32 | 31 | 30 | 29 | 29 | 29 | 34 |
| Baden P.S. | 41 | 28 | 25 | 23 | 22 | 19 | 19 | 17 | 17 | 17 | 18 | 19 | 23 |
| Blair O.E.C. | Un. | 53 | 47 | 50 | 45 | 42 | 39 | 45 | 30 | 31 | 33 | 30 | 31 |
| Blair Road P.S. | 75 | 41 | 35 | 38 | 30 | 28 | 26 | 26 | 22 | 20 | 20 | 20 | 31 |
| Breslau P.S. | 61 | 69 | 44 | 44 | 38 | 47 | 33 | 32 | 32 | 29 | 28 | 25 | 37 |
| Bridgeport P.S. | 44 | 42 | 41 | 45 | 42 | 26 | 21 | 22 | 11 | 22 | 23 | 22 | 27 |
| Brigadoon P.S. | 35 | 49 | 32 | 25 | 24 | 19 | 17 | 15 | 16 | 15 | 15 | 15 | 19 |
| Cedar Creek P.S. | 38 | 34 | 28 | 26 | 25 | 22 | 20 | 19 | 22 | 19 | 24 | 23 | 27 |
| Cedarbrae P.S. | 52 | 42 | 52 | 43 | 41 | 37 | 37 | 36 | 34 | 32 | 38 | 34 | 46 |
| Centennial (Camb) P.S. | 48 | 49 | 41 | 40 | 42 | 35 | 31 | 33 | 34 | 32 | 32 | 32 | 41 |
| Centennial (Wloo) P.S. | 70 | 46 | 41 | 41 | 40 | 39 | 36 | 35 | 35 | 31 | 31 | 34 | 29 |
| Central P.S. | 49 | 51 | 45 | 47 | 46 | 42 | 40 | 43 | 42 | 32 | 33 | 32 | 42 |
| Chalmers Street P.S. | 48 | 47 | 46 | 49 | 41 | 36 | 31 | 31 | 26 | 25 | 25 | 25 | 30 |
| Chicopee Hills P.S. | N.O. | N.O. | N.O. | N.O. | N.O. | N.O. | N.O. | N.O. | N.O. | 20 | 15 | 14 | 21 |
| Clemens Mill P.S. | 40 | 36 | 31 | 30 | 30 | 26 | 26 | 31 | 26 | 24 | 23 | 20 | 20 |
| Conestogo P.S. | 47 | 46 | 42 | 45 | 38 | 33 | 31 | 36 | 33 | 28 | 31 | 27 | 47 |
| Coronation P.S. | 80 | 66 | 61 | 54 | 53 | 48 | 50 | 53 | 56 | 53 | 53 | 54 | 46 |
| Country Hills P.S. | 33 | 35 | 32 | 47 | 38 | 30 | 28 | 23 | 20 | 18 | 20 | 21 | 25 |
| Courtland Senior P.S. | 44 | 44 | 42 | 37 | 36 | 43 | 34 | 29 | 27 | 30 | 32 | 26 | 36 |
| Crestview P.S. | 44 | 57 | 51 | 47 | 52 | 46 | 49 | 45 | 45 | 45 | 41 | 33 | 38 |
| Dickson P.S. | 33 | 32 | 31 | 27 | 28 | 27 | 16 | Dis. | Dis. | Dis. | Dis. | Dis. | Dis. |
| Doon P.S. | 50 | 53 | 47 | 35 | 33 | 28 | 24 | 22 | 24 | 27 | 26 | 23 | 32 |
| Driftwood Park P.S. | 41 | 32 | 27 | 27 | 24 | 19 | 21 | 15 | 9 | 15 | 16 | 13 | 17 |
| Edna Staebler P.S. | N.O. | 28 | 24 | 22 | 22 | 18 | 18 | 17 | 17 | 16 | 18 | 18 | 26 |
| Elgin Street P.S. | 35 | 37 | 31 | 28 | 28 | 23 | 22 | 23 | 23 | 28 | 28 | 27 | 30 |
| Elizabeth Ziegler P.S. | 49 | 49 | 47 | 43 | 37 | 36 | 36 | 36 | 31 | 26 | 27 | 26 | 28 |
| Empire P.S. | 43 | 42 | 39 | 36 | 37 | 21 | 28 | 29 | 28 | 26 | 27 | 27 | 36 |
| Floradale P.S. | 37 | 32 | 35 | 36 | 35 | 26 | 22 | 29 | 24 | 20 | 22 | 22 | 29 |
| Forest Glen P.S. | 50 | 45 | 40 | 36 | 32 | 33 | 30 | 28 | 26 | 25 | 26 | 27 | 34 |
| Forest Hill P.S. | 57 | 47 | 41 | 42 | 34 | 29 | 27 | 33 | 31 | 33 | 32 | 34 | 30 |
| Franklin P.S. | 42 | 44 | 38 | 38 | 36 | 31 | 29 | 31 | 38 | 34 | 29 | 30 | 42 |
| Glencairn P.S. | 28 | 29 | 28 | 26 | 28 | 30 | 25 | 23 | 24 | 25 | 21 | 25 | 25 |
| GrandView (Camb) P.S. | 41 | 44 | 41 | 24 | 23 | 19 | 18 | 17 | 20 | 16 | 18 | 16 | 24 |
| Grandview (NH) P.S. | 36 | 57 | 38 | 38 | 34 | 29 | 26 | 29 | 26 | 26 | 28 | 28 | 36 |
| Groh P.S. | N.O. | N.O. | N.O. | N.O. | N.O. | N.O. | N.O. | N.O. | N.O. | 16 | 16 | 13 | 17 |
| Hespeler P.S. | 36 | 34 | 28 | 25 | 23 | 22 | 21 | 18 | 18 | 17 | 17 | 18 | 16 |
| Highland P.S. | 59 | 49 | 46 | 33 | 28 | 29 | 29 | 31 | 32 | 29 | 29 | 26 | 41 |
| Hillcrest P.S. | 41 | 37 | 33 | 29 | 30 | 25 | 25 | 22 | 21 | 21 | 23 | 23 | 35 |
| Howard Robertson P.S. | 74 | 60 | 58 | 47 | 47 | 40 | 40 | 44 | 43 | 43 | 42 | 41 | 48 |
| J F Carmichael P.S. | 39 | 34 | 32 | 30 | 25 | 25 | 24 | 25 | 24 | 22 | 25 | 25 | 37 |
| J.W. Gerth P.S. | N.O. | 20 | 21 | 18 | 19 | 16 | 18 | 16 | 19 | 17 | 16 | 15 | 24 |
| Janet Metcalf P.S. | N.O. | N.O. | N.O. | N.O. | N.O. | N.O. | N.O. | N.O. | N.O. | N.O. | 19 | 15 | 17 |
| Jean Steckle P.S. | N.O. | N.O. | N.O. | N.O. | N.O. | 18 | 11 | 12 | 10 | 10 | 11 | 11 | 18 |
| John Darling P.S. | 32 | 37 | 27 | 27 | 27 | 25 | 27 | 26 | 25 | 25 | 25 | 22 | 33 |
| John Mahood P.S. | 58 | 43 | 35 | 34 | 31 | 24 | 23 | 23 | 21 | 20 | 22 | 21 | 27 |
| Keatsway P.S. | 45 | 33 | 26 | 23 | 17 | 16 | 17 | 17 | 16 | 16 | 16 | 16 | 20 |
| King Edward P.S. | 108 | 47 | 45 | 43 | 43 | 39 | 44 | 55 | 43 | 37 | 32 | 32 | 34 |
| Lackner Woods P.S. | 34 | 34 | 30 | 31 | 29 | 25 | 24 | 23 | 21 | 26 | 23 | 21 | 27 |
| Laurelwood P.S. | 39 | 38 | 32 | 31 | 27 | 23 | 21 | 20 | 19 | 19 | 20 | 21 | 24 |
| Laurentian P.S. | 53 | 56 | 51 | 44 | 42 | 47 | 56 | 39 | 44 | 37 | 34 | 30 | 40 |
| Lester B. Pearson P.S. | 38 | 27 | 25 | 25 | 24 | 19 | 19 | 17 | 16 | 15 | 16 | 16 | 29 |
| Lexington P.S. | 55 | 49 | 48 | 43 | 42 | 46 | 34 | 37 | 35 | 33 | 33 | 33 | 35 |
| Lincoln Avenue P.S. | 52 | 62 | 55 | 54 | 50 | 23 | 21 | Dis. | Dis. | Dis. | Dis. | Dis. | Dis. |
| Lincoln Heights P.S. | 54 | 45 | 39 | 38 | 38 | 32 | 29 | 44 | 44 | 31 | 30 | 32 | 37 |
| Linwood P.S. | 64 | 46 | 42 | 45 | 39 | 37 | 33 | 36 | 32 | 29 | 29 | 29 | 33 |

**WATERLOO REGION DISTRICT SCHOOL BOARD
BUSINESS SERVICES DIVISION
FACILITY SERVICES DEPARTMENT**

ENERGY UPDATE

ANNUAL GREENHOUSE GAS EMISSION INTENSITY (kg CO₂e/m²) - ELEMENTARY SCHOOLS

| School | 08 | 09/10 | 10/11 | 11/12 | 12/13 | 13/14 | 14/15 | 15/16 | 16/17 | 17/18 | 18/19 | 19/20 | 20/21 |
|--|-----------|--------------|--------------|--------------|--------------|--------------|--------------|--------------|--------------|--------------|--------------|--------------|--------------|
| MacGregor Sr P.S. | 36 | 36 | 34 | 32 | 31 | 28 | 27 | 29 | 28 | 28 | 31 | 33 | 31 |
| MacKenzie King P.S. | 53 | 55 | 50 | 52 | 45 | 44 | 30 | 31 | 31 | 30 | 29 | 30 | 33 |
| Manchester P.S. | 51 | 56 | 52 | 49 | 43 | 38 | 25 | 25 | 21 | 17 | 21 | 21 | 25 |
| Margaret Avenue P.S. | 41 | 50 | 32 | 39 | 39 | 28 | 36 | 39 | 57 | 35 | 34 | 35 | 41 |
| Mary Johnston P.S. | 31 | 29 | 28 | 28 | 25 | 25 | 21 | 21 | 22 | 20 | 20 | 21 | 26 |
| McQuarrie Centre | 98 | 95 | 99 | 73 | 92 | 73 | 50 | 45 | 46 | 44 | 42 | 47 | 38 |
| Meadowlane P.S. | 40 | 45 | 43 | 40 | 37 | 32 | 27 | 25 | 32 | 28 | 24 | 20 | 27 |
| Millen Woods P.S. | N.O. | N.O. | 31 | 22 | 23 | 20 | 17 | 18 | 17 | 17 | 17 | 17 | 27 |
| Moffat Creek P.S. | N.O. | N.O. | N.O. | N.O. | 20 | 17 | 13 | 16 | 15 | 14 | 9 | 12 | 11 |
| N A MacEachern P.S. | 58 | 56 | 49 | 38 | 37 | 30 | 35 | 27 | 25 | 23 | 9 | 25 | 38 |
| New Dawn | 75 | 76 | 69 | 73 | 61 | 43 | 32 | 29 | 30 | 22 | 57 | 56 | 43 |
| New Dundee P.S. | 34 | 37 | 34 | 34 | 33 | 29 | 29 | 30 | 29 | 29 | 30 | 29 | 33 |
| Northlake Woods P.S. | 56 | 40 | 39 | 37 | 34 | 27 | 25 | 26 | 24 | 23 | 27 | 24 | 24 |
| Park Manor P.S. | 61 | 54 | 47 | 44 | 43 | 38 | 37 | 27 | 51 | 53 | 53 | 34 | 29 |
| Parkway P.S. | 52 | 44 | 41 | 45 | 50 | 35 | 30 | 30 | 27 | 29 | 25 | 28 | 37 |
| Pioneer Park P.S. | 42 | 47 | 41 | 41 | 40 | 31 | 30 | 29 | 33 | 30 | 26 | 27 | 34 |
| Preston P.S. | 32 | 31 | 30 | 29 | 28 | 24 | 21 | 21 | 21 | 21 | 21 | 21 | 28 |
| Prueter P.S. | 30 | 49 | 45 | 37 | 44 | 39 | 30 | 31 | 32 | 31 | 30 | 34 | 40 |
| Queen Elizabeth P.S. | 40 | 44 | 42 | 47 | 44 | 35 | 30 | 36 | 42 | 37 | 36 | 34 | 32 |
| Queensmount Sr P.S. | 72 | 54 | 58 | 55 | 42 | 43 | 50 | 38 | 39 | 44 | 37 | 21 | 22 |
| Riverside P.S. | 30 | 35 | 27 | 26 | 27 | 20 | 17 | 17 | 19 | 17 | 14 | 15 | 20 |
| Riverside (old location) | N.O. | N.O. | N.O. | N.O. | N.O. | N.O. | N.O. | N.O. | 12 | 14 | 17 | 13 | 12 |
| Rockway P.S. | 48 | 55 | 48 | 53 | 43 | 51 | 42 | 51 | 49 | 45 | 48 | 35 | 39 |
| Rosemount P.S. | 44 | 53 | 50 | 47 | 46 | 44 | 49 | 51 | 51 | 48 | Dis. | Dis. | Dis. |
| Ryerson P.S. | 47 | 44 | 39 | 30 | 29 | 24 | 22 | 20 | 21 | 22 | 21 | 19 | 28 |
| Saginaw P.S. | 44 | 47 | 38 | 35 | 36 | 31 | 28 | 29 | 28 | 26 | 25 | 24 | 38 |
| Sandhills P.S. | 42 | 41 | 34 | 33 | 35 | 30 | 26 | 25 | 27 | 24 | 22 | 22 | 37 |
| Sandowne P.S. | 51 | 34 | 35 | 47 | 43 | 34 | 34 | 32 | 30 | 22 | 21 | 23 | 25 |
| Sheppard P.S. | 40 | 48 | 45 | 41 | 39 | 38 | 37 | 32 | 31 | 37 | 34 | 30 | 37 |
| Silverheights P.S. | 41 | 34 | 32 | 28 | 26 | 20 | 17 | 17 | 18 | 14 | 14 | 15 | 22 |
| Sir Adam Beck P.S. | N.O. | N.O. | 20 | 26 | 18 | 17 | 16 | 15 | 15 | 14 | 15 | 15 | 19 |
| Smithson P.S. | 39 | 46 | 43 | 44 | 42 | 30 | 38 | 37 | 34 | 37 | 34 | 35 | 39 |
| Southridge P.S. | 51 | 56 | 50 | 48 | 48 | 42 | 47 | 39 | 45 | 43 | 45 | 39 | 51 |
| St Andrew's P.S. | 44 | 33 | 32 | 28 | 26 | 24 | 24 | 25 | 21 | 22 | 22 | 23 | 27 |
| St Jacobs P.S. | 43 | 44 | 42 | 39 | 39 | 34 | 30 | 32 | 31 | 32 | 32 | 36 | 44 |
| Stanley Park P.S. | 54 | 58 | 53 | 50 | 45 | 48 | 38 | 37 | 41 | 37 | 42 | 37 | 45 |
| Stewart Avenue P.S. | 48 | 52 | 30 | 26 | 25 | 20 | 20 | 22 | 25 | 21 | 21 | 21 | 27 |
| Suddaby P.S. | 27 | 35 | 33 | 33 | 24 | 25 | 25 | 24 | 23 | 23 | 23 | 22 | 27 |
| Sunnyside P.S. | 41 | 42 | 37 | 33 | 33 | 31 | 31 | 28 | 27 | 27 | 30 | 27 | 28 |
| Tait Street P.S. | 41 | 42 | 41 | 38 | 37 | 35 | 25 | 25 | 24 | 23 | 23 | 24 | 31 |
| Three Bridges P.S. | 35 | 34 | 29 | 30 | 23 | 21 | 15 | Dis. | Dis. | Dis. | Dis. | Dis. | Dis. |
| Trillium P.S. | 47 | 57 | 41 | 40 | 37 | 33 | 29 | 31 | 31 | 26 | 30 | 30 | 27 |
| Vista Hills P.S. | N.O. | N.O. | N.O. | N.O. | N.O. | N.O. | N.O. | N.O. | 18 | 16 | 14 | 15 | 14 |
| W.T. Townshend P.S. | 28 | 25 | 22 | 19 | 19 | 18 | 17 | 15 | 14 | 15 | 16 | 16 | 23 |
| Wellesley P.S. | 44 | 45 | 42 | 40 | 39 | 35 | 32 | 30 | 31 | 29 | 28 | 27 | 29 |
| Westheights P.S. | 55 | 57 | 40 | 35 | 33 | 27 | 26 | 27 | 22 | 25 | 20 | 19 | 28 |
| Westmount P.S. | 43 | 42 | 38 | 34 | 34 | 28 | 49 | 22 | 16 | 15 | 14 | 11 | 21 |
| Westvale P.S. | 27 | 23 | 20 | 17 | 17 | 14 | 12 | 11 | 11 | 11 | 13 | 13 | 18 |
| William G. Davis P.S. | 56 | 72 | 57 | 56 | 50 | 46 | 42 | 44 | 45 | 40 | 33 | 38 | 34 |
| Williamsburg P.S. | 28 | 24 | 22 | 22 | 20 | 18 | 18 | 17 | 20 | 17 | 17 | 16 | 22 |
| Wilson Avenue P.S. | 40 | 31 | 38 | 35 | 34 | 30 | 28 | 23 | 23 | 22 | 25 | 25 | 28 |
| Winston Churchill P.S. | 39 | 40 | 36 | 25 | 26 | 24 | 26 | 28 | 28 | 23 | 24 | 23 | 26 |
| Woodland Park P.S. | 31 | 31 | 27 | 25 | 22 | 17 | 17 | 16 | 15 | 13 | 16 | 16 | 20 |
| Wrigley's Corners O.E.C. | Un. | 52 | 45 | 55 | 42 | 36 | 40 | 45 | 39 | 40 | 48 | 36 | 36 |
| Average GHG Emission Intensity (kg CO₂e/m²) | 46 | 45 | 39 | 37 | 35 | 31 | 28 | 28 | 28 | 26 | 26 | 25 | 30 |

N.O. - Not Open

Un. - Unavailable

Dis. - Disposed

**WATERLOO REGION DISTRICT SCHOOL BOARD
BUSINESS SERVICES DIVISION
FACILITY SERVICES DEPARTMENT**

ENERGY UPDATE

ANNUAL GREENHOUSE GAS EMISSION INTENSITY (kg CO₂e/m²) - SECONDARY SCHOOLS

| School | 08 | 09/10 | 10/11 | 11/12 | 12/13 | 13/14 | 14/15 | 15/16 | 16/17 | 17/18 | 18/19 | 19/20 | 20/21 |
|--|-----------|--------------|--------------|--------------|--------------|--------------|--------------|--------------|--------------|--------------|--------------|--------------|--------------|
| Bluevale C.I. | 49 | 49 | 38 | 39 | 38 | 34 | 33 | 31 | 27 | 30 | 30 | 34 | 32 |
| Cameron Heights C.I. | 69 | 64 | 59 | 56 | 51 | 45 | 92 | 57 | 49 | 39 | 38 | 35 | 24 |
| Eastwood C.I. | 38 | 40 | 35 | 33 | 33 | 34 | 30 | 31 | 24 | 24 | 30 | 26 | 30 |
| Elmira District S.S. | 50 | 52 | 45 | 42 | 37 | 33 | 34 | 34 | 35 | 30 | 33 | 32 | 34 |
| Forest Heights C.I. | 59 | 56 | 53 | 56 | 46 | 40 | 38 | 36 | 37 | 44 | 43 | 35 | 37 |
| Galt C.I. | 46 | 42 | 42 | 48 | 46 | 40 | 37 | 38 | 37 | 32 | 35 | 36 | 33 |
| Glenview Park S.S. | 50 | 52 | 52 | 47 | 45 | 37 | 32 | 32 | 28 | 28 | 28 | 28 | 29 |
| Grand River C.I. | 44 | 48 | 43 | 39 | 40 | 36 | 35 | 37 | 30 | 29 | 30 | 33 | 29 |
| Huron Heights S.S. | 45 | 46 | 44 | 40 | 39 | 30 | 27 | 31 | 28 | 24 | 24 | 26 | 26 |
| Jacob Hespeler S.S. | 39 | 47 | 46 | 39 | 40 | 35 | 27 | 34 | 26 | 21 | 22 | 23 | 30 |
| Kitchener-Waterloo C. & V.S. | 52 | 47 | 44 | 41 | 40 | 40 | 34 | 33 | 32 | 31 | 32 | 28 | 29 |
| Preston H.S. | 47 | 53 | 45 | 43 | 41 | 39 | 37 | 39 | 38 | 37 | 35 | 36 | 35 |
| Sir John A. Macdonald S.S. | 44 | 42 | 37 | 36 | 30 | 25 | 23 | 25 | 24 | 21 | 20 | 22 | 29 |
| Southwood S.S. | 49 | 38 | 30 | 27 | 24 | 21 | 19 | 20 | 20 | 20 | 21 | 22 | 22 |
| Waterloo C.I. | 48 | 48 | 45 | 40 | 40 | 36 | 34 | 35 | 35 | 34 | 33 | 28 | 31 |
| Waterloo-Oxford District S.S. | 44 | 56 | 54 | 51 | 45 | 41 | 41 | 42 | 39 | 36 | 37 | 38 | 44 |
| Average GHG Emission Intensity (kg CO₂e/m²) | 48 | 49 | 45 | 42 | 40 | 35 | 36 | 35 | 32 | 30 | 31 | 30 | 31 |
| Education Centre (kg CO₂e/m²) | 45 | 44 | 38 | 35 | 32 | 23 | 21 | 23 | 21 | 21 | 20 | 22 | 24 |

**WATERLOO REGION DISTRICT SCHOOL BOARD
BUSINESS SERVICES DIVISION
FACILITY SERVICES DEPARTMENT
ENERGY UPDATE
ENERGY BUDGET AND EXPENDITURES**

| Commodity | 2008/09 | | 2009/10 | | 2010/11 | |
|--------------|----------------------|----------------------|----------------------|----------------------|----------------------|----------------------|
| | Budget | Actual | Budget | Actual | Budget | Actual |
| Electricity | \$ 4,616,900 | \$ 5,755,988 | \$ 5,733,000 | \$ 6,797,223 | \$ 6,759,525 | \$ 6,549,661 |
| Natural Gas | \$ 5,832,400 | \$ 4,966,345 | \$ 5,505,900 | \$ 4,480,301 | \$ 4,915,515 | \$ 4,352,896 |
| Total | \$ 10,449,300 | \$ 10,722,333 | \$ 11,238,900 | \$ 11,277,524 | \$ 11,675,040 | \$ 10,902,557 |

| Commodity | 2011/12 | | 2012/13 | | 2013/14 | |
|--------------|----------------------|---------------------|----------------------|---------------------|----------------------|----------------------|
| | Budget | Actual | Budget | Actual | Budget | Actual |
| Electricity | \$ 6,809,909 | \$ 6,572,072 | \$ 7,204,740 | \$ 7,062,058 | \$ 7,315,200 | \$ 7,432,158 |
| Natural Gas | \$ 4,958,342 | \$ 3,357,832 | \$ 3,163,721 | \$ 2,377,512 | \$ 3,512,270 | \$ 2,934,994 |
| Total | \$ 11,768,251 | \$ 9,929,904 | \$ 10,368,461 | \$ 9,439,570 | \$ 10,827,470 | \$ 10,367,152 |

| Commodity | 2014/15 | | 2015/16 | | 2016/17 | |
|--------------|----------------------|----------------------|----------------------|----------------------|----------------------|----------------------|
| | Budget | Actual | Budget | Actual | Budget | Actual |
| Electricity | \$ 9,213,000 | \$ 8,018,535 | \$ 8,263,900 | \$ 8,803,203 | \$ 8,164,700 | \$ 8,892,776 |
| Natural Gas | \$ 3,007,590 | \$ 2,934,994 | \$ 3,055,500 | \$ 2,686,392 | \$ 2,891,800 | \$ 2,726,342 |
| Total | \$ 12,220,590 | \$ 10,953,529 | \$ 11,319,400 | \$ 11,489,595 | \$ 11,056,500 | \$ 11,619,118 |

| Commodity | 2017/18 | | 2018/19 | | 2019/20 | |
|--------------|----------------------|----------------------|----------------------|----------------------|----------------------|----------------------|
| | Budget | Actual | Budget | Actual | Budget | Actual |
| Electricity | \$ 10,303,000 | \$ 8,510,009 | \$ 10,182,000 | \$ 7,956,894 | \$ 9,380,000 | \$ 7,364,388 |
| Natural Gas | \$ 2,714,000 | \$ 3,044,841 | \$ 2,997,500 | \$ 2,698,385 | \$ 2,971,500 | \$ 2,846,183 |
| Total | \$ 13,017,000 | \$ 11,554,850 | \$ 13,179,500 | \$ 10,655,278 | \$ 12,351,500 | \$ 10,210,571 |

| Commodity | 2020/21 | |
|--------------|----------------------|----------------------|
| | Budget | Actual |
| Electricity | \$ 8,854,500 | \$ 7,325,544 |
| Natural Gas | \$ 2,911,500 | \$ 3,148,469 |
| Total | \$ 11,766,000 | \$ 10,474,013 |

**WATERLOO REGION DISTRICT SCHOOL BOARD
BUSINESS SERVICES DIVISION
FACILITY SERVICES DEPARTMENT**

**ENERGY UPDATE
PHOTOVOLTAIC GENERATION AND REVENUES (LIFETIME)***

| | kWh Production | Revenue |
|----------------------|----------------|-------------------|
| Blair Road P.S. | 108,015 | \$ 86,628 |
| Forest Glen P.S | 121,589 | \$ 97,514 |
| Forest Heights C.I. | 104,247 | \$ 83,606 |
| Lincoln Heights P.S. | 118,332 | \$ 94,902 |
| Waterloo C.I. | 129,472 | \$ 103,837 |
| Total | 581,654 | \$ 466,487 |

* Reports energy produced between November 2011 and August 2021.

Links to websites are as follows:

| | |
|----------------------|---|
| Blair Road P.S. | http://www.cachelan.com/green/solarVuLive.php?ac=blairrdps&dr=dakon |
| Forest Glen P.S. | http://www.cachelan.com/green/solarVu.php?ac=forestglenps |
| Forest Heights C.I. | http://www.foresthtsc.solarvu.net/green/solarVu.php?ac=foresthtsc |
| Lincoln Heights P.S. | http://lincolnhgtsp.solarvu.net/green/solarVuLive.php?ac=lincolnhgtsp&dr=dakon |
| Waterloo C.I. | http://www.waterlooci.solarvu.net/green/solarVu.php?ac=waterlooci |

2020/21 Utility Rebates Reinvestments (\$55,000)

| | |
|-------------------------------------|---|
| Brigadoon, Jean Steckle, 23 others | Water meter monitoring equipment for leak detection |
| GRCI, Laurentian, and 2 others | Upgrade controls on urinal tanks to reduce water consumption |
| Janet Metcalfe | Recommissioning of building controls and mechanical equipment |
| Avenue Rd | Water conservation inspection |
| GRCI, CHCI, Ayr, and 12 others | Upgrade to exterior lighting control |
| Elgin, Mary Johnston, and 32 others | Upgrade interior lighting in portables to LED - 100 portables |

2020/21 Capital Funded Energy Efficiency Upgrades (\$80,000)

| | |
|--|--|
| SSS, Conestogo, Glencairn and 4 others | Upgrades to exterior lighting controls |
| Coronation | Install of energy efficient hand dryers |
| Doon, BCI | LED lighting upgrades |
| Centennial W | AC and Controls Upgrade |
| CHCI | LED exterior lighting upgrade |
| SJAM | Natural gas meter monitoring equipment trial |



Report to Board

May 16, 2022

Subject: Ontario Public School Boards' Association AGM Direction for Voting Delegate

Recommendations:

- (1) That the Waterloo Region District School Board support Executive Council's position on Member Board Policy Resolution (A) Virtual OPSBA Meetings; and**
- (2) That the Waterloo Region District School Board support Executive Council's position on Member Board Policy Resolution (B) Independent Study of Duties and Powers of District School Boards; and**
- (3) That the Waterloo Region District School Board support Executive Council's position on Member Board Policy Resolution (C) Accessibility for Ontarians with Disabilities Act; and**
- (4) That the Waterloo Region District School Board support Executive Council's position on Member Board Policy Resolution (D) Capital Funding Formula; and**
- (5) That the Waterloo Region District School Board support Executive Council's position on Member Board Policy Resolution (E) Real Estate and Housing Crisis; and**
- (6) That the Waterloo Region District School Board support Executive Council's position on Member Board Policy Resolution (F) Indigenous Course Requirement; and**
- (7) That the Waterloo Region District School Board support Member Board Policy Resolution Environmental Determinants of Student Health and Well-Being; and**
- (8) That the Waterloo Region District School Board empower the voting delegate to use his discretion when voting in the OPSBA Elections at the Annual General Meeting.**

Status

The purpose of this report is to provide direction for Chairperson S. Piatkowski (or alternate) as voting delegate at the OPSBA AGM. As is the usual practice, OPSBA sent several items slated for consideration at the OPSBA 2022 AGM, in order that they may be reviewed and discussed as necessary at the board table prior to the General Meeting in June. This review will help prepare the Voting Delegate for the AGM. This year's AGM is being held in Ottawa on June 9-11, 2022.

(1) Appendix A - Member Boards' AGM Policy Resolutions

The OPSBA Constitution states that "Policy Resolutions may be submitted by Member Boards for consideration by way of Notice of Motion to the Board of Directors of the Association at any time throughout the year."

(2) Appendix B - Member Boards' AGM Policy Resolution - Environmental Determinants of Student Health and Well-Being. This resolution has not been reviewed by OPSBA's Executive Council. The policy resolution which will be presented by the Upper Grand District School Board from the floor at the AGM

(3) [OPSBA Election Nomination Forms Received as of May 12, 2022](#)

Please use the web link above to access the list of nominees and their profiles (where provided). Further information about the [OPSBA Roles and Responsibilities](#) can be found on their website.

Financial implications

The financial implications are not known at this time.

Communications

The Chairperson S. Piatkowski, the Voting Delegate for WRDSB, will vote at the OPSBA AGM based on the decisions made during the May 16, 2022 Committee of the Whole Meeting.

Prepared by: Stephanie Reidel, Manager of Corporate Services, on behalf of Trustee L. Tremble, and in consultation with Coordinating Council.

DATE: June 10, 2022

SUBJECT: Member Board Policy Resolutions

Background

The OPSBA Constitution states that "*Policy Resolutions may be submitted by Member Boards for the consideration by way of Notice of Motion to the Board of Directors of the Association at any time throughout the year.*" Policy resolutions may also be submitted by Member Boards for consideration during the Annual General Meeting.

On April 29, 2022, Executive Council reviewed the policy resolutions received from Member Boards for consideration at the 2022 Annual General Meeting. Their recommendations were shared with the Board of Directors on April 29-30, 2022.

The information on the following pages includes the rationale and resolutions that were submitted by member boards along with comments and recommendations from Executive Council and the Board of Directors.

Appendix A: *Virtual OPSBA Meetings* ~ Near North District School Board

Appendix B: *Independent Study of Duties and Powers of District School Boards* ~ Ottawa-Carleton District School Board

Appendix C: *Accessibility for Ontarians with Disabilities Act* ~ Ottawa-Carleton District School Board

Appendix D: *Capital Funding Formula* ~ Bluewater District School Board

Appendix E: *Real Estate and Housing Crisis* ~ Limestone District School Board

Appendix F: *Indigenous Course Requirement* ~ Waterloo Region District School Board

Action

Attached member board policy resolutions will be presented for the consideration at the AGM.

Some Dedicated Virtual Meetings – OPSBA – Climate Change Initiative

Near North District School Board

Rationale

Under the Whole definition of the Child (OPSBA) the word “environment” was added through an AGM motion by the NNDSB (Steer) in the year of 2021. (OPSBA - please reference this and indicate the change please.)

Climate change has been, is and will be here as one of society’s most pressing challenges.

The question is what is OPSBA, OPSBA Directors doing to lessen our footprint?

As the resolution implies, having virtual meetings except for the AGM, PES, Labour Relations and any other meeting deemed necessary at the call of the President, would help lessen our environmental footprint. It is a way to be proactive, lead, be a role model and be part of the solution rather than be part of the problem. The environmental savings will be enormous along with the cost savings especially since petroleum prices have sky rocketed. The “consideration” is at the least...a hybrid with appropriate technology (equipment or service) be provided.

Resolution

Be it resolved, on the recommendation from the Near North District School Board, that the Ontario Public School Boards’ Association give consideration, as it transitions out of the pandemic, that Board meetings, except for the Annual General Meeting, Public Education Symposium and Labour Relations Conference or any meeting deemed necessary, at the call of the President; in reducing our environmental/carbon footprint, will remain virtual.

Respectfully submitted,
Bill Steer, Trustee, Near North District School Board

Executive Council & Board of Directors Comments

The resolution as written was not supported. Varying preferences for participation in OPSBA meetings and identified various environmentally friendly modes of transportation were acknowledged. It was suggested that staff engage in a review of hybrid options for future meetings.

Commission of a Study to Clarify the Duties and Powers of District School Boards and Trustees to Ensure the Health and Well-being of Employees and Students

Ottawa-Carleton District School Board

Rationale

Whereas, the Province's 72 District School Board play a vital role in supporting a world-class public education system in Ontario;

Whereas, the duties and powers of District School Boards and their Boards of Trustees are critical for advancing student achievement and well-being, among other responsibilities;

Whereas, the move to centralized bargaining and the increasing centralization of public education in Ontario generally, as well as the pandemic, have raised questions about the authorities of District School Boards and Boards of Trustees;

Resolution

Be it resolved, that the Ontario Public School Boards' Association commission an authoritative, independent study to clarify the duties and powers of District School Boards and Boards of Trustees, with respect to ensuring the health and well-being of employees and students.

Respectfully submitted,
Keith Penny, Trustee, Ottawa-Carleton District School Board

Executive Council & Board of Directors Comments

The policy resolution was supported and it was recommended that in-house counsel take the lead.

Request of the Provincial Government to Undertake Commitments Under the Accessibilities for Ontarians with Disabilities Act (AODA)

Ottawa-Carleton District School Board

Rationale

Whereas, the province has passed legislation requiring accessibility standards to be developed as well as objectives for each class of organizations, including school boards which would provide access to services, by 2025 under the Accessibility for Ontarians with Disabilities Act (AODA);

Whereas, the province has not yet published a Regulation providing clear, comprehensive guidelines for school boards;

Whereas, school boards have limited build capacity year-over-year given the limited nature of time, funding and available contractors;

Resolution

Be it resolved, that the Ontario Public School Boards' Association request the provincial government to undertake the following commitments under the AODA:

- a) Publish, as soon as possible, clear final guidelines on the built environment for the K-12 sector; and**
- b) Provide capital funding to equal that required for school boards to meet these provincially mandated requirements; and**
- c) Work with school boards to ensure compliance with the legislation, and should meeting then deadline not be possible due to logistical constraints, provide explicit, short term, time limited, exemptions to the existing legislation for districts to meet these needs.**

Respectfully submitted,

Keith Penny, Trustee, Ottawa-Carleton District School Board

Executive Council & Board of Directors Comments

This policy resolution was supported.

Consider student population estimates, and projected enrolment data in school size when building new schools

Bluewater District School Board

Rationale

Whereas, the financial formula for capital projects, a new school will frequently be funded based on current enrolment and community demographic data from years before the school is built;

Whereas, future growth is not considered, which is unfortunate as a new school in a community often draws families into the area;

Whereas, it is unfortunate that portable classrooms are often required to accommodate the growth in enrolment soon after a new school is opened, as according to our school board mission we aim to provide a quality education for every student in a safe, accepting, and caring environment;

Whereas, OPSBA advocates for sustainable and equitable education funding, and includes new school buildings;

Resolution

Be it resolved, that the Ontario Public School Boards' Association support and recommend that student population estimates and professionally projected enrolment data in school size be considered in the funding formula for school size when building new schools, and to use the same planning data that the Ministry of Municipal Affairs and Housing and the Ministry of Finance require municipalities to use.

Respectfully submitted,
Jan Johnstone, Trustee, Bluewater District School Board

Executive Council & Board of Directors Comments

The policy resolution was supported in principle. An amendment was provided following the Board of Directors meeting that takes into consideration feedback from the Board of Directors.

Advocating on behalf of children and students for immediate action to address real estate and rental housing crisis

Limestone District School Board

Rationale

Whereas, the physical and mental well-being of students and children are significantly impacted by circumstances they face outside of the school;

Whereas, student poverty, homelessness, family stress as a result of rising debt, and unaffordable housing have a significant impact on the mental and physical well-being of students;

Whereas, well established affordability guidelines recommend that housing not exceed more than 35% of a household income, but now have significantly exceeded that threshold for many families;

Whereas, it is well established that home and food security directly impacts a student's ability to succeed at school, and exacerbates inequities within communities, depriving every child the necessary conditions to succeed at school;

Whereas, this will dramatically impact the physical and mental well-being of children, leading to an increased likelihood of long-term poverty, poor health and premature death;

Whereas, the mental and physical well-being of children is a joint responsibility of all levels of government;

Resolution

Be it resolved that OPSBA recognize that housing is a fundamental right, and a lack of affordable housing can be detrimental to the mental and physical well-being of children, students, and families across Ontario; and exacerbates inequities which have a lifelong impact.

And, be it resolved that OPSBA advocate for strategies by all levels of government to ensure affordable housing and housing security, so all students have the necessary conditions to succeed.

Respectfully submitted,
Laurie French, Trustee, Limestone District School Board

Executive Council & Board of Directors Comments

It was noted that the policy resolution, as written falls outside OPSBA's mandate; however, it is one consideration in a whole child approach to student achievement and well-being. It was recommended that Limestone DSB consider amending the language to better align with Association priorities. If a revision is submitted, it will be sent electronically to member boards and distributed at the AGM.

Indigenous course requirements for graduation

Waterloo Region District School Board

Rationale

Whereas, the Province of British Columbia has announced that it will require all secondary school students to complete Indigenous-focused course work (four credits) as a condition of graduation (information on this initiative can be found at <https://engage.gov.bc.ca/app/uploads/sites/736/2022/03/FNESC-EDUC-Grad-Requirement-Two-Pager-March-4.pdf>);

Whereas, this change in graduation requirements becomes effective for British Columbia students entering secondary school in the 2023/24 school year; and

Whereas, Ontario students would also benefit greatly from a deeper understanding of Indigenous peoples that can best be gained through Indigenous-themed curriculum; and

Whereas, The Truth and Reconciliation Commission Call to Action 629(i) ask provincial governments to make curriculum on residential schools, Treaties, and Indigenous perspectives and contributions a mandatory education requirement.

Resolution

Be it resolved, that the Ontario Public School Boards' Association call on the Government of Ontario to announce an Indigenous course requirement for graduation modelled after the one announced in the Province of British Columbia.

Be it further resolved, that the Ontario Public School Boards' Association request that this requirement be implemented so that it is in place for students entering secondary school for the 2024/25 school year.

Respectfully submitted,

Scott Piatkowski, Chairperson of the Waterloo Region District School Board

Executive Council & Board of Directors Comments

It was recommended that the policy resolution be reviewed by the Indigenous Trustees' Council and comments be shared at the AGM.



OPSBA POLICY RESOLUTION SUBMISSION FORM

Environmental Determinants of Student Health and Well-Being

Rationale

Whereas, the World Health Organization [WHO] warns that climate change is negatively impacting the environmental aspects of health, food supply and security, safe drinking water, and air supply,

Whereas, Canada is a signatory to the Paris Agreement [2015] committing to carbon reduction goals and actions to reduce global warming, and Canada's Changing Climate Change Report [Ottawa, 2019] documents the average annual temperature over land has increased 1.7°C, while the temperatures in Northern Canada have increased by 2.3°C between 1948 and 2016,

Whereas, effects of global warming do not affect all people and communities equally, the more marginalized members of our communities being inequitably affected, with Indigenous Peoples, young people and socially and economically disadvantaged populations being particularly affected,

Whereas, federal, provincial and municipal governments have made commitments, plans, programs, and dedicated resources to mitigate climate change, impacts and future risks,

Whereas, school boards as community leaders and partners have developed Environmental Plans and Monitoring Reports, undertaken Renewable Energy projects, Capital and Renewal Efficiency projects in an effort to reduce school board carbon emissions, and developed student and organizational Environmental Education and action plans,

Whereas, the Whole Child and Student Well-Being is an OPSBA multi-year priority with advocacy efforts on Child and Youth Mental Health, and Poverty,

Whereas, Sustainable and Equitable Funding is an OPSBA multi-year priority with advocacy for Energy and Transportation,

Resolution

Be it resolved, that OPSBA's Whole Child and Student Well-Being Priority, recognize the environmental determinants of mental health on student achievement and well-being, and that this be included in OPSBA advocacy work plans and activities.

Be it resolved, that OPSBA's Whole Child and Student Well-Being, and Sustainable and Equitable Education Funding Priorities recognize the inequitable impact of climate change on Indigenous Peoples, young people and socially and economically disadvantaged populations, and advocate for local board efforts in addressing these inequities.

Be it resolved, that OPSBA's Sustainable and Equitable Education Funding Priority, advocate for dedicated Carbon Neutral, Capital and Renewal funding targeted to reduce School Board Energy and Transportation Carbon emissions.

Respectfully submitted,

Date of Submission: May 3, 2022

Name of Member Board Representative: Linda Busuttil

Title of Member Board Representative: Board Chairperson

Name of Member Board: Upper Grand District School Board