

2019/20 BUDGET YEAR

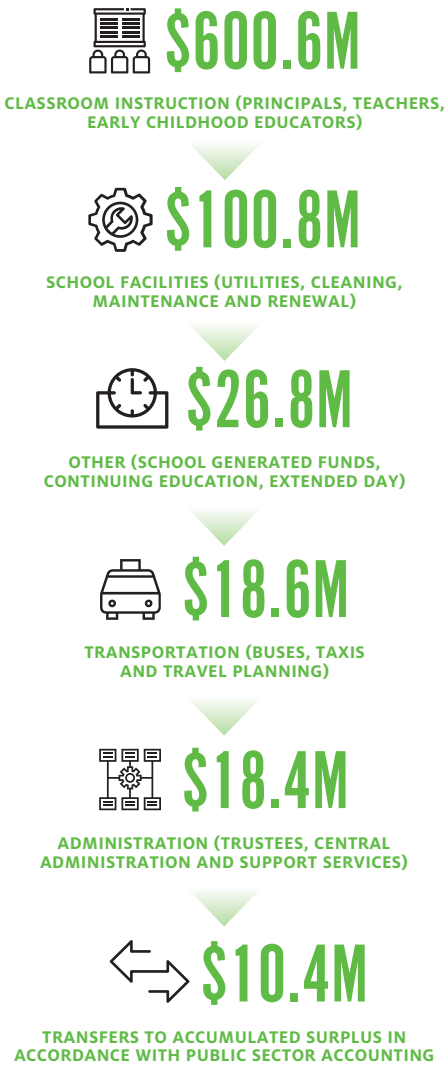
BALANCED BUDGET



REVENUE

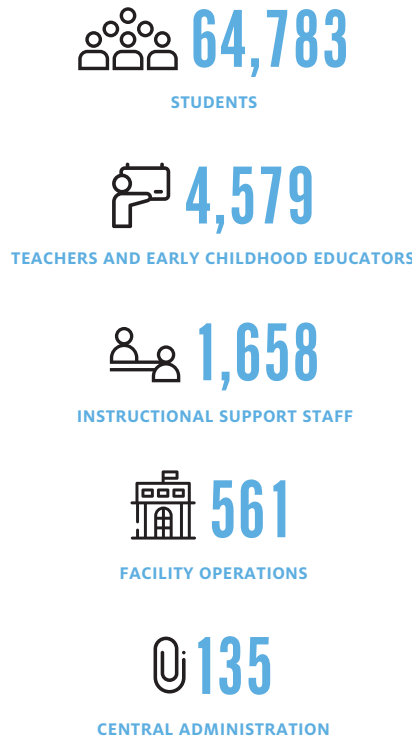
$$\begin{array}{r}
 \$695.8\text{M} + \$79.2\text{M} + \$0.6\text{M} = \$775.6\text{M} \\
 \text{GRANTS FOR STUDENT} \quad \text{OTHER} \quad \text{EDUCATION} \quad \text{TOTAL} \\
 \text{NEEDS (GSN)} \quad \text{REVENUES} \quad \text{PROGRAM} \quad \text{REVENUE} \\
 \text{OTHER (EPO)}
 \end{array}$$

EXPENDITURES

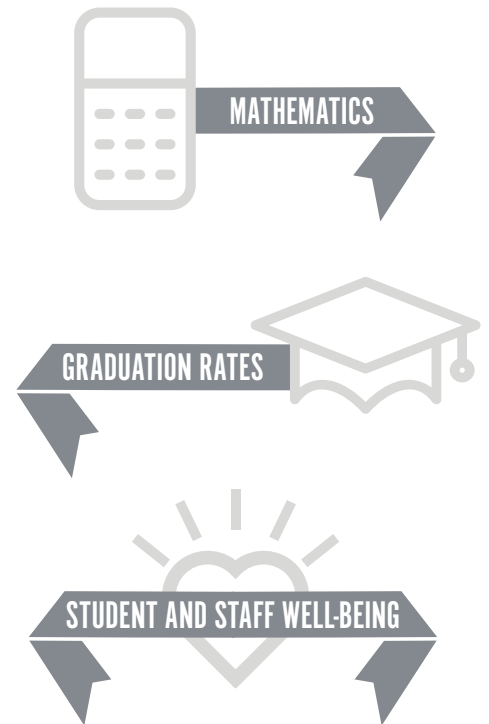


\$775.6M
TOTAL EXPENDITURES

BREAKDOWN OF NUMBERS



OPERATIONAL GOALS



2019/20 CAPITAL INVESTMENTS

