



**Waterloo Region
District School Board**

West Waterloo Elementary Schools Boundary Study

Draft Report and Recommendations

Prepared by:

The Waterloo Region District School Board Planning Department

October 6, 2015

Table of Contents

Executive Summary	ii
Introduction.....	1
Background.....	1
West Waterloo Boundary Study Area.....	1
West Waterloo Study Area Schools.....	1
West Waterloo Working Group.....	3
Membership	3
Timelines and Activities	4
Rationale for a Boundary Study	4
West Waterloo Working Group Goals and Objectives	9
Goals	9
Objectives	10
Boundary Scenarios.....	11
Scenario 11	13
Scenario 14	18
Achieving the Study Objectives	22
Boundary Recommendations	24
Further Considerations	25
Conclusion	26

Executive Summary

This report is intended to advise and inform the Waterloo Region District School Board (WRDSB) Board of Trustees of the information gathered and consultation conducted by the West Waterloo Boundary Study Working Group. This information has been used to develop the final recommendations provided in this report.

The Working Group agreed on Scenario 11 as the recommended strategy for pupil accommodation in the West Waterloo study area. The final decision on outcome of the boundary study is to be made by the elected Board of Trustees.

The following is a brief outline of the recommendations provided in this report.

Implementation of **Scenario 11** consists of the following recommendations:

1. *Establish a JK-8 boundary for the new Vista Hills Public School*
2. *Realign Edna Staebler Public School's JK-8 Boundary*
3. *Temporarily realign Laurelwood Public School's Grade 7-8 Boundary*
4. *Establish the Beaver Creek Meadows Development Area*

Introduction

The purpose of this report is to provide to the Waterloo Region District School Board's (WRDSB) Board of Trustees the information and rationale for the recommendations resulting from the West Waterloo Elementary Schools Boundary Study.

Background

A boundary study ensures that where a decision is taken by a school board regarding the realignment of school attendance boundaries has the full involvement of an informed local community and it is based on a broad range of criteria.

On May 12, 2014, a boundary study for the established West Waterloo study area (see Figure 1) within the City of Waterloo was initiated. The primary purpose of this study was to establish a boundary for the new Vista Hills Public School (elementary), which is tentatively scheduled to open for September 2016. The opening of Vista Hills Public School is intended to address the overcrowding at Edna Staebler and Laurelwood Public Schools.

West Waterloo Boundary Study Area

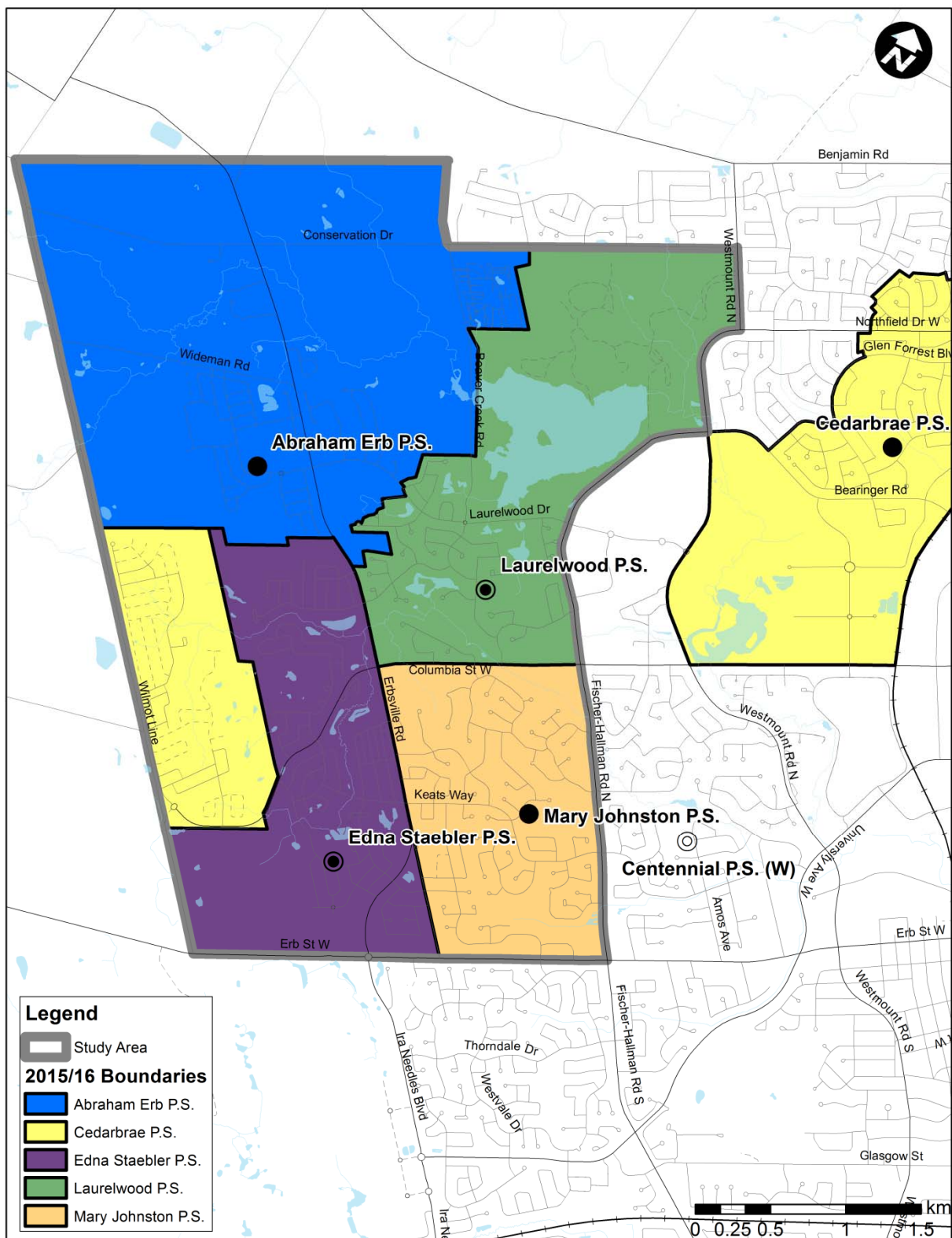
The West Waterloo study area is made up of 4 schools (see Figure 1), that serve the student populations in the western portion of Waterloo. The study area contains a mix of older established neighbourhoods and new or planned residential developments.

West Waterloo Study Area Schools

The schools within the study area include:

1. Abraham Erb Public School (JK-6)
2. Edna Staebler Public School (JK-8)
3. Laurelwood Public School (JK-8)
4. Mary Johnston Public School (JK-6)

Figure 1: West Waterloo Study Area



West Waterloo Working Group

Once a boundary study is approved by the Board, a Working Group is established. The role of the Working Group is to:

- Review and supply background information
- Confirm the issues to be addressed by the boundary study
- Develop goals and objectives
- Develop and review scenarios
- Review public feedback
- Confirm recommendations

Membership

The Working Group was composed of both community members and Board staff.

Abraham Erb Public School

Principal: T. Stroud (2014/15), H. Schumann (2015/16)
Vice-Principal: B. Hughes (2014/15)
Parent(s): D. Bergey, G. Sikiladha/R. Sikiladha

Cedarbrae Public School

Principal: M. McMath
Parent(s): M. Naveed

Centennial Public School

Principal: B. Adams
Vice-Principal: B. Hughes (2014/15), B. Weigel (2015/16)
Parent(s): T. Nairn, Vivian F.

Edna Staebler Public School

Principal: J. Parliament (2014/15), P. Fracas (2015/16)
Vice-Principal: J. Hansen
Parent(s): S. Reed, M. St. Pierre

Laurelwood Public School

Principal: L. Arbuckle
Vice-Principal: H. Corman
Parent(s): R. Barnett-Cowan, C. Lovegrove

Mary Johnston Public School

Principal: H. Tinnes

Vista Hills Public School

Assigned Principal: D. Oberle

Area Superintendent

Area Superintendent of Education: E. Ranney (2014/15)
Area Superintendent of Achievement and Well-Being: E. Ranney (2015/16), P. Rubenschuh (2015/16 Centennial Public School only)

Business Services Staff (Planning)

Manager of Planning: D. Cuomo
Senior Planner: L. Agar
Recording Secretary: A. Kean

Timelines and Activities

Throughout the study, a total of two formal public meetings were held to provide opportunity for a wide range of school and community groups to participate in the consultation. Public meetings were advertised on the Board's main website and twitter (@wrdsb), school websites, through neighbourhood associations, flyers posted in schools and in notices sent home with each student in the study area (either via email or hard copy).

The following is a summary of the activities of the Working Group prior to submission of this report.

ACTIVITY	DATE	LOCATION
Board approval to commence study	May 12, 2014	Education Centre
WG Meeting #1	January 22, 2015	Abraham Erb PS
WG Meeting #2	February 19, 2015	Mary Johnston PS
WG Meeting #3	March 24, 2015	Laurelwood PS
WG Meeting #4	April 9, 2015	Edna Staebler PS
Public Meeting #1	April 23, 2015	Abraham Erb PS
WG Meeting #5	May 14, 2015	Abraham Erb PS
WG Meeting #6	June 4, 2015	Laurelwood PS
WG Meeting #7	September 22, 2015	Edna Staebler PS
Area T Focus Group/WG Meeting #8	September 30, 2015	Edna Staebler PS
Public Meeting #2	October 6, 2015	Abraham Erb PS

Note: WG refers to Working Group

Rationale for a Boundary Study

There were several key reasons the Board initiated a boundary study for the West Waterloo area. These reasons included:

- ***Establishing a boundary for the new Vista Hills Public School***
As a result of residential growth in this area of Waterloo, the Board was able to secure funding from the Ministry of Education to build a new elementary school of 646 pupil place capacity on a board-owned property at 314 Ladyslipper Drive, Waterloo. The targeted opening date for this new school is September 2016.
- ***Address overcrowding at Edna Staebler and Laurelwood Public Schools***
Table 1 outlines the size and configuration of each of the facilities within the West Waterloo study area.

Table 1: West Waterloo School Capacity and Unofficial Enrolment as of September 29, 2015

School	On-the Ground Capacity (2015/16)	Capacity with portapack (2015/16)	Sept. 29, 2015 Unofficial Enrolment (Total)	JK-6	JK-8	# portables in use on site (2015/16)
Abraham Erb P.S.	487	487	416	●		0
Edna Staebler P.S.	706	706	906		●	10
Laurelwood P.S.	375	513	709		●	9*
Mary Johnston P.S.	447	447	446	●		2
Total	2015	2135	2477	2	2	21

* includes classrooms in portapack

On September 29, 2015, a shortage of almost 462 permanent pupil places existed within the study area. Three of the schools (Edna Staebler, Laurelwood and Mary Johnston) are accommodating more classes than what their buildings can facilitate, resulting in 15 portable classrooms and 6 portapack classrooms temporarily accommodating students in the area. Currently Laurelwood Public School offers the senior elementary (Grades 7-8) program for Abraham Erb Public School students and Mary Johnston Public School students attend Centennial Public School for Grades 7-8.

- **Facility and site issues**

Table 2 summarizes the original year of construction of the facility as well as any subsequent additions. The school sites size and building gross floor areas are also summarized in Table 2.

Table 2: West Waterloo Facility and Site Information (2015/16)

School	Original Year of Construction	Additions	Site Size (acres)	Gross Floor Area (m ²)	# Classrooms (Reg.)	# Classrooms (FDK)
Abraham Erb P.S.	2005	N/A	5.99	4,487	15	5
Edna Staebler P.S.	2008	2014	5.87	6,801	22	7
Laurelwood P.S.	1998	1999	8.04	4,700	11	3
Mary Johnston P.S.	1987	2008	8.18	3,826	14	4

Note: FDK refers to Full Day Kindergarten sized rooms (loaded at 26 students per room); Reg. refers to regular-sized classroom (loaded at 23 students per room)

The Working Group identified the following facility and site constraints as part of this study:

- Mary Johnston Public School
 - Single gymnasium would make it difficult to accommodate an increase in enrolment (typically a double gymnasium is warranted when enrolment exceeds 400-450 students)
 - Number of parking spaces in parking lot is less than the number of employees at the school (parking shortage if all employees are present). See **Table 3** for details.
- Edna Staebler Public School
 - Difficulty scheduling classes in the gymnasium due to the number of classes in the school and the number of periods in a day (enrolment exceeds scheduling capacity)
 - Washroom facilities can become overtaxed at certain times of the day due to high enrolment at the school

- Limited storage space (e.g., equipment in the gym area)
- Limited space in the staff room which then encourages staff to find other locations for breaks, limiting staff cohesion
- Lack of outdoor play space (especially during nutrition break times and for track and field - students need to be bused to another facility). This issue increases as more portables added
- The municipal park adjacent to the school was originally intended to be used by the school (park-school campus) for outdoor play space; however it is still undeveloped and unusable
- Laurelwood Public School
 - Six classroom portapack (temporary classroom structure) constructed in 1998 if needed for the long-term should be replaced with a permanent structure
 - Number of parking spaces in parking lot is less than the number of employees at the school (parking shortage if all employees are present). See **Table 3** for details.
 - Washroom facilities can become overtaxed at certain times of the day
- Abraham Erb Public School
 - Traffic congestion is a concern (particularly in cold weather) and the school is working with its parent community to address. The entry and exit off of Laurelwood Drive is a challenge due to it being divided by a median, with some sightlines (which are not addressable) are concerning when coming and going.

Table 3: School Parking Lot Information (2015/16)

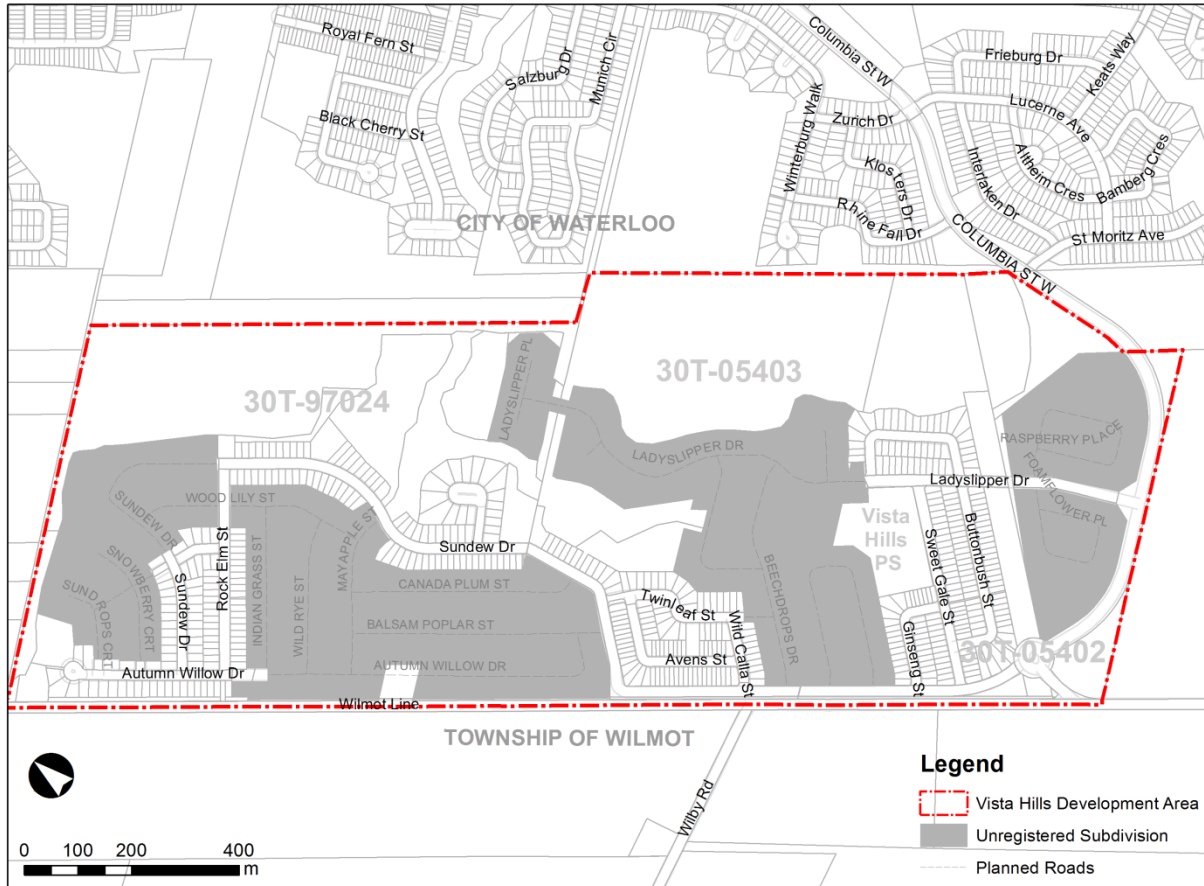
School	Total Employees (school & child care)	Total Parking Spaces	Barrier Free Parking Spaces	Child Care Parking Spaces	Rented Spaces Adjacent to School
Abraham Erb P.S.	40	54	3	0	10
Edna Staebler P.S.	72	88	4	6	0
Laurelwood P.S.	60	44	2	0	0
Mary Johnston P.S.	45	44	1	0	0

- ***Growth as a result of residential development***

The North-Western portion of the City of Waterloo is the only remaining land where greenfield residential development can occur. Within the study area alone, there are proposals to add upwards of 3600 units in the next 10 years and beyond. There are two main development areas identified by the City of Waterloo that will have an impact on the West Waterloo study area – Vista Hills (see Figure 2) and Beaver Creek Meadows (see Figure 3).

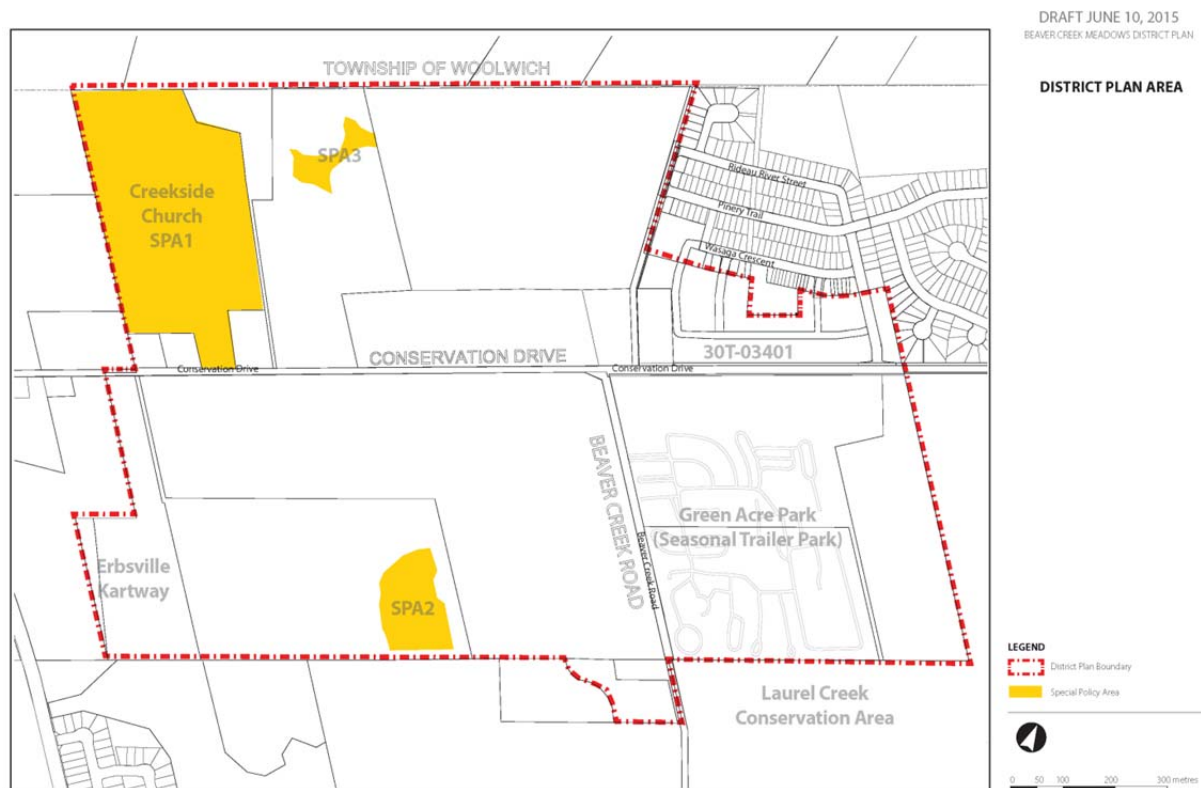
Vista Hills Public School falls within the Vista Hills development plan area (see Figure 2). This area has the greatest growth potential, with plans for approximately 1200 units currently draft approved and approximately 325 unbuilt units in registered plans. The only additional elementary school the Board has planned in this community is the new Vista Hills Public School.

Figure 2: Vista Hills Development Plan Area



The Beaver Creek Meadows district (see Figure 3) is currently in the District Planning phase; therefore, additional development approvals in this area are not imminent. The Board has planned for an elementary school site within in this District Plan.

Figure 3: Beaver Creek Meadows District Plan Area



Source: http://www.waterloo.ca/en/contentresources/resources/government/BCM_dp_map_1.pdf

- **Enrolment changes/shifts**

One of the major challenges the board faces is accommodating a mobile population in stationary facilities built at the time for the programs and enrolment of the day. Table 4 and Table 5 illustrate the historic and projected enrolment (with status quo boundaries) at each of the facilities in the study area.

Table 4: West Waterloo Historic Enrolment (2009-2014)

School	Total Students by Year						% change
	2009	2010	2011	2012	2013	2014	
Abraham Erb P.S.	411	413	406	417	454	420	2
Edna Staebler P.S.	647	714	778	802	845	879	26
Laurelwood P.S.	766	717	701	700	696	714	-7
Mary Johnston P.S.	476	470	446	425	449	435	-9
Total	2300	2314	2331	2344	2444	2448	6

Table 5: West Waterloo Projected Enrolment with Status Quo Boundaries (2015-2020)

School	Projected Total Students by Year						% change
	2015	2016	2017	2018	2019	2020	
Abraham Erb P.S.	415	410	395	390	370	355	-14
Edna Staebler P.S.	905	940	950	925	925	915	1
Laurelwood P.S.	710	670	685	695	675	690	-3
Mary Johnston P.S.	445	435	430	430	440	435	-2
Total	2475	2455	2460	2440	2410	2395	-3

Prior to Edna Staebler Public School opening in September of 2008, a boundary study took place. Table 6 shows the anticipated enrolment at the facilities in the area based on the boundaries that exist today. Based on these projections, it is clear that the overall student yield in the area has been approximately 12-14% higher than what was anticipated at the time. This could be a result of a higher than average market-share (approximately 85% market-share in West Waterloo versus the board-wide average of 75%) and higher than average student yield per dwelling unit. The projections going forward as shown in Table 5 have taken into account the higher than average student yields in this community.

Table 6: West Waterloo Projected Enrolment from 2007 Boundary Study

School	Projected Total Students by Year (from 2007)				
	2008	2009	2010	2011	2012
Abraham Erb P.S.	250*	303	338	363	376
Edna Staebler P.S.	509	552	594	615	670
Laurelwood P.S.	678	646	629	618	605
Mary Johnston P.S.	434	432	433	409	417
Total	1871	1933	1994	2005	2068

* Enrolment projection did not take into account grandfathering clause that was in the approved motion by Board on January 28, 2008 allowing students to remain at Abraham Erb Public School instead of switching to Edna Staebler Public School.

West Waterloo Working Group Goals and Objectives

Goals

The goals established by the Working Group explain what the Working Group intends to achieve through the boundary study process. The four goals are:

- To establish grade configurations that provide the best learning opportunities for students and staff while giving consideration to:
 - existing facilities, community connections and distance;
 - student learning opportunities;
 - community growth patterns; and
 - capital funding, including partnership opportunities
- To consider facilities and infrastructure (including sites, offices, gyms, specialized classrooms, etc.) necessary to deliver curriculum and support student achievement where changes are proposed
- To establish boundaries that consider:
 - efficiency of transportation (students within walking distance, bus routes, etc.);

- permanent capacity of schools and/or future construction requirements (e.g., site, program spaces, safety);
 - current and future population density and demographics;
 - impact on feeder and surrounding schools (i.e., consistent boundaries for Gr. 6 students moving to Gr. 7, and Gr. 8 students moving to secondary school); and
 - the distribution and accessibility of Special Education and French Immersion programs.
- To consider the impact on students and families where changes are proposed by giving consideration for:
 - grandfathering;
 - phasing;
 - access to child care; and
 - transportation provisions.

Objectives

Prior to developing accommodation options (i.e., scenarios), the Working Group set the following study objectives which aim to address the issues identified by the Board, the Working Group and members of the public. These objectives are more specific and measureable statements of the goals. They also provide the criteria to evaluate the accommodation options.

- To establish a boundary for the new Vista Hills Public School
- To increase the number of classes instructed in permanent classrooms in a cost-effective way
- To provide equitable learning opportunities for students and staff by moving towards the following criteria (from *Board Policy 3002 – Elementary School Size and Configuration*):
 - A minimum of 2 classes per grade in JK-6 (built capacity between 350 and 525 students)
 - More than 2 classes per grade in Grades 7-8 (>100 students) to support program
 - JK-8 facilities with a built capacity between 500 and 700 students
 - Minimize the number of schools with enrolments over 700 students wherever possible
 - Minimize the transition of elementary students between schools where practical
- To increase the number of students within a safe walking distance (e.g., signalized intersections to cross at, crossing guards present) to their assigned school

Boundary Scenarios

Throughout the study, a total of fourteen (14) boundary scenarios were considered. The Working Group considered not only boundaries, but also the configuration of each of the study area schools (e.g., converting a school from a JK-6 to a JK-8 organization). Table 7 summarizes the different configurations that were applied to the boundary scenarios.

Table 7: Summary of West Waterloo School Configurations Considered by Scenario

School Configuration	Scenario																			
	1	2	3	4	5	6	7	8.1	8.2	9.1	9.2	10	11.1	11.2	12.1	12.2	13.1	13.2	14.1	14.2
ABE JK-6	x			x	x	x		x		x	x	x	x	x	x	x	x	x	x	x
ABE JK-8		x	x				x		x											
EST JK-6			x																	
EST JK-8	x	x		x	x	x	x	x	x	x	x	x	x	x	x	x	x	x	x	x
LRW JK-6			x												x		x			
LRW JK-8	x	x		x	x	x	x	x	x	x	x	x	x	x		x		x	x	x
MJP JK-6	x	x	x	x	x	x	x	x	x	x	x	x	x	x	x	x	x	x	x	x
MJP JK-8																				
VIS JK-6																				
VIS JK-8	x	x	x	x	x	x	x	x	x	x	x	x	x	x	x	x	x	x	x	x

ABE= Abraham Erb Public School, EST = Edna Staebler Public School, LRW = Laurelwood Public School, MJP = Mary Johnston Public School, VIS = Vista Hills Public School

At the first public meeting on April 23, 2015, a total of three (3) scenarios were presented – Scenarios 6, 7 and 8.

Scenario 6 involved the following:

- Vista Hills Public School JK-8 boundary incorporated the West Waterloo Development Area (temporarily assigned to Cedarbrae and Centennial Public Schools), and portions of the Edna Staebler and Laurelwood (7-8) Public School boundaries
- “Columbia Forest” (projection area F) redirected to Abraham Erb Public School from Edna Staebler Public School for JK-6 and to Vista Hills Public School for Grades 7 and 8
- Area east of Erbsville Road and north of Laurelwood Drive (projection area D) redirected to Laurelwood Public School from Abraham Erb Public School
- New Development Area boundary established (Beaver Creek Meadows District Plan Area – projection area B) where the school attendance area (temporary and/or long-term) will be determined at a future date

Scenario 7 involved the following:

- Vista Hills Public School JK-8 boundary incorporated the West Waterloo Development Area (temporarily assigned to Cedarbrae and Centennial Public Schools), and a portion of the Edna Staebler Public School boundary
- Abraham Erb Public School adds Grade 7-8 to become a JK-8 school
- “Columbia Forest” (projection area F) redirected to Abraham Erb Public School from Edna Staebler Public School
- New Development Area boundary established (Beaver Creek Meadows District Plan Area – projection area B) where the school attendance area (temporary and/or long-term) will be determined at a future date

Scenario 8 involved the following:

Phase 1

- Vista Hills Public School JK-8 boundary incorporated the West Waterloo Development Area (temporarily assigned to Cedarbrae and Centennial Public Schools), and a portion of the Edna Staebler Public School boundary
- Abraham Erb Public School feeds Vista Hills Public School for Grades 7-8 instead of Laurelwood Public School
- New Development Area boundary established (Beaver Creek Meadows District Plan Area – projection area B) where the school attendance area (temporary and/or long-term) will be determined at a future date

Phase 2

- Abraham Erb Public School added Grade 7-8 to become a JK-8 school
- “Columbia Forest” (projection area F) redirected to Abraham Erb Public School from Vista Hills Public School

All three scenarios presented at the first public meeting showed the new Vista Hills Public School as a JK-8 organization, and two scenarios (Scenarios 7 and 8 – phase 2) had Abraham Erb Public School being converted to a JK-8 facility. In summary, the comments received with the scenarios presented included:

- “Any scenario that moves Abraham Erb PS to JK-8 sooner would be best”
- Preference to send Abraham Erb PS FI students to Laurelwood PS for Grades 7 & 8 (x 2)
- Preference to grandfather Grade 8 students to limit number of times they change schools (x3)
- Grandfather FI students at current school if Vista Hills PS does not offer program
- “A priority for my family is for grade 7-8 to continue at Laurelwood. Preferably with FI instruction”
- Columbia Forest resident: “Preference is if we can’t stay at Edna Staebler PS that we are sent to Vista Hills PS...not Abraham Erb PS”
- Vista Hills needs Grade 1 FI in 2016
- Columbia Forest resident: “We do not like scenario 8 because it appears to involve two school changes for our children before high school”
- Top priority is keeping siblings together (x2) and in FI
- “I would like to see scenarios in which French Immersion is clearly planned for and scenarios which do not rely on unconfirmed funding to expand Abraham Erb to grade 7/8”
- Vista Hills requires a lot of bussing
- Resident on the north side of Columbia St: Concerned about transportation if remaining at Edna Staebler PS for FI (x2)
- Accepting Grades 7 & 8 at Abraham Erb without an expansion “would put those kids at a disadvantage compared to those attending Vista Hills, Laurelwood and Edna Staebler”

Using this feedback, the Working Group developed six more scenarios in order to address the concerns brought forward and to find a scenario that best met the objectives of the study. Based on the Public Meeting feedback and further discussion by the Working Group regarding the study objectives, adding Grades 7 and 8 to Abraham Erb Public School was not considered any further. To offer an equitable program for these students, Abraham Erb Public School would require an addition – specifically to provide the specialized spaces typically available in schools with a senior elementary program (e.g., Science and Technology, Music and Art). Building an addition onto Abraham Erb Public School when

these spaces exist at other schools in the area did not meet the second objective of the study - to increase the number of classes instructed in permanent classrooms in a cost-effective way.

Of the additional scenarios developed after the first Public Meeting, two best met the objectives established for this study. The Working Group also agreed that a multi-phased approach was necessary to balance the current accommodation needs with those of the future as peak enrolments at the various schools shift geography. The two final scenarios are described in greater detail in the following sections.

Scenario 11

Scenario 11 involves two phases – Phase 1 is short-term and Phase 2 is long-term. The first (short-term) phase is the same as Phase 1 of Scenario 8 that was presented at the first public meeting. It is expected that the Scenario 11 Phase 1 boundaries could be in place until approximately the 2020/21 school year.

Scenario 11, Phase 1

- Vista Hills Public School JK-8 boundary includes the West Waterloo Development Area (temporarily assigned to Cedarbrae and Centennial Public Schools), and a portion of the Edna Staebler Public School boundary (JK-6 shown on Figure 4 and Grades 7-8 boundary shown on Figure 5)
- Abraham Erb Public School feeds Vista Hills Public School for Grades 7-8 instead of Laurelwood Public School (shown on Figure 5)
- New Development Area boundary established (Beaver Creek Meadows District Plan Area – projection area B) where the school attendance area (temporary and/or long-term) will be determined at a future date (shown on Figure 6).

The second phase of Scenario 11 varies from Phase 2 of Scenario 8 to address the concerns expressed by the community surrounding multiple moves for the Columbia Forrest neighbourhood (referred to by the Working Group as Projection Area F). The Scenario 11 Phase 2 Junior Kindergarten to Grade 6 boundaries remain the same as in Phase 1 (see Figure 4). The Grades 7 and 8 boundaries change for students in the Abraham Erb Public School JK-6 boundary. This area would move from Vista Hills Public School to Laurelwood Public School. This change can be seen in Figure 7.

Figure 4: Scenario 11, Phase 1 and Phase 2 Junior Kindergarten to Grade 6 Boundaries for Vista Hills and Edna Staebler Public Schools

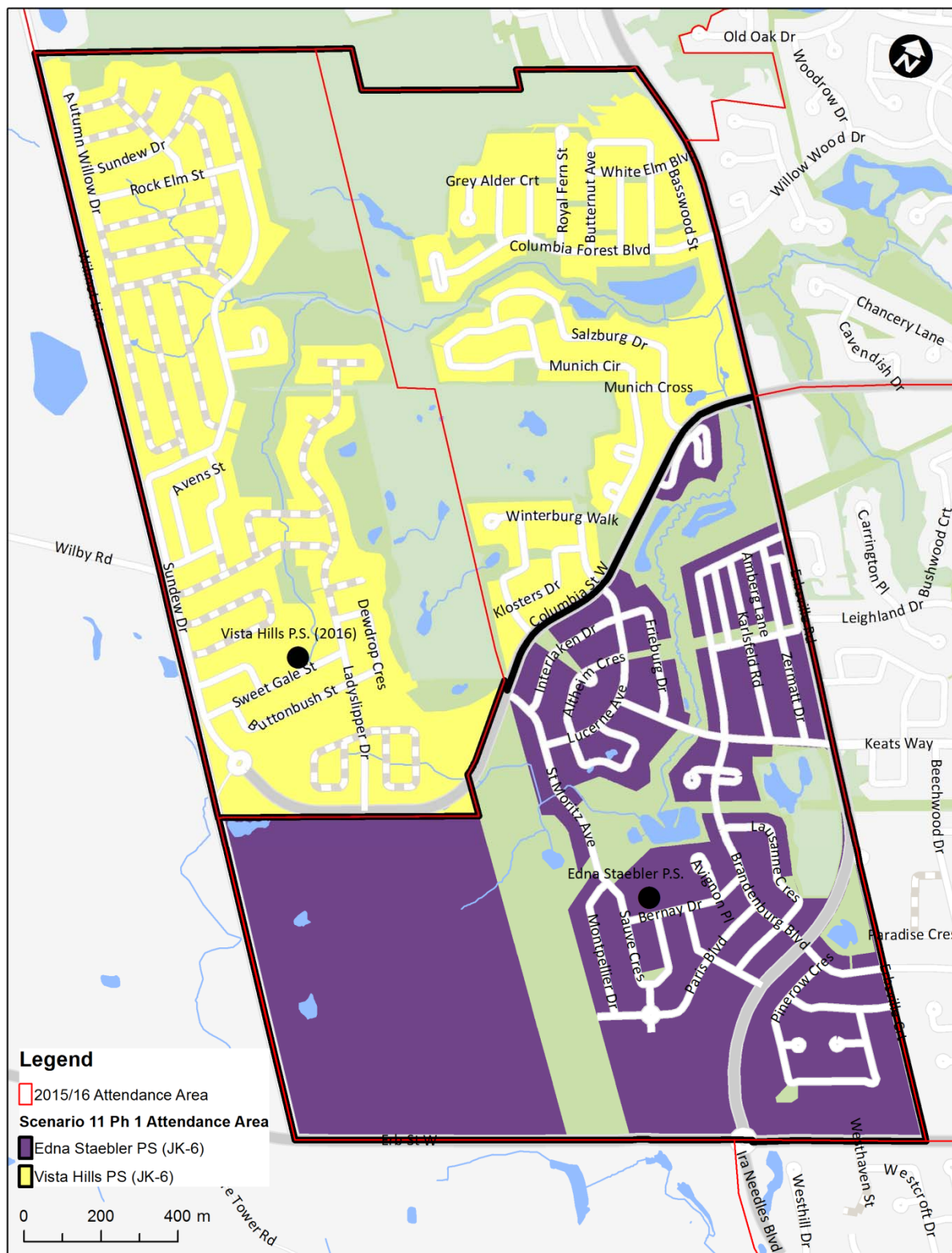


Figure 5: Scenario 11, Phase 1 Grade 7 to 8 Boundaries for Vista Hills, Edna Staebler and Laurelwood Public Schools

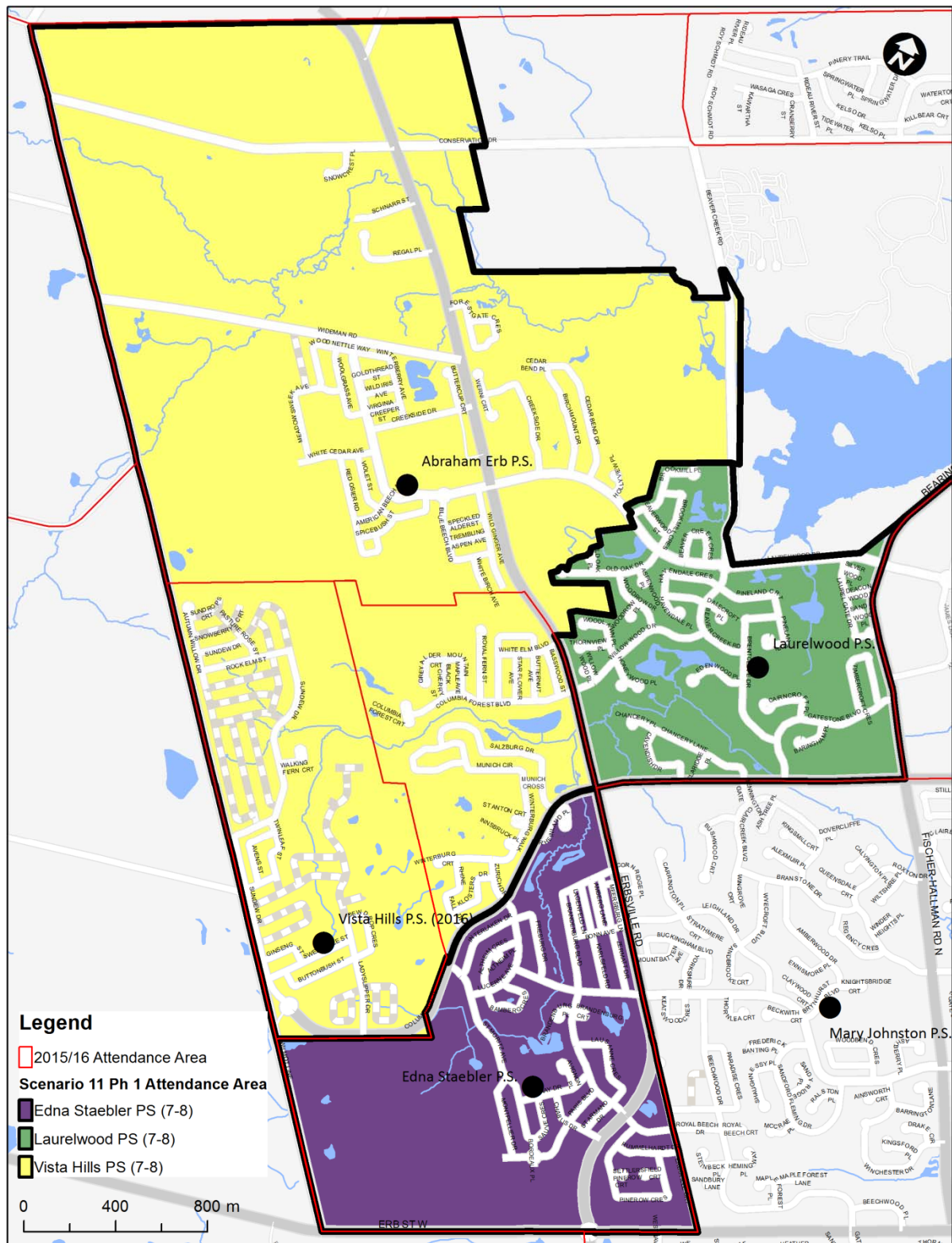


Figure 6: Scenario 11 Beaver Creek Meadows Development Area

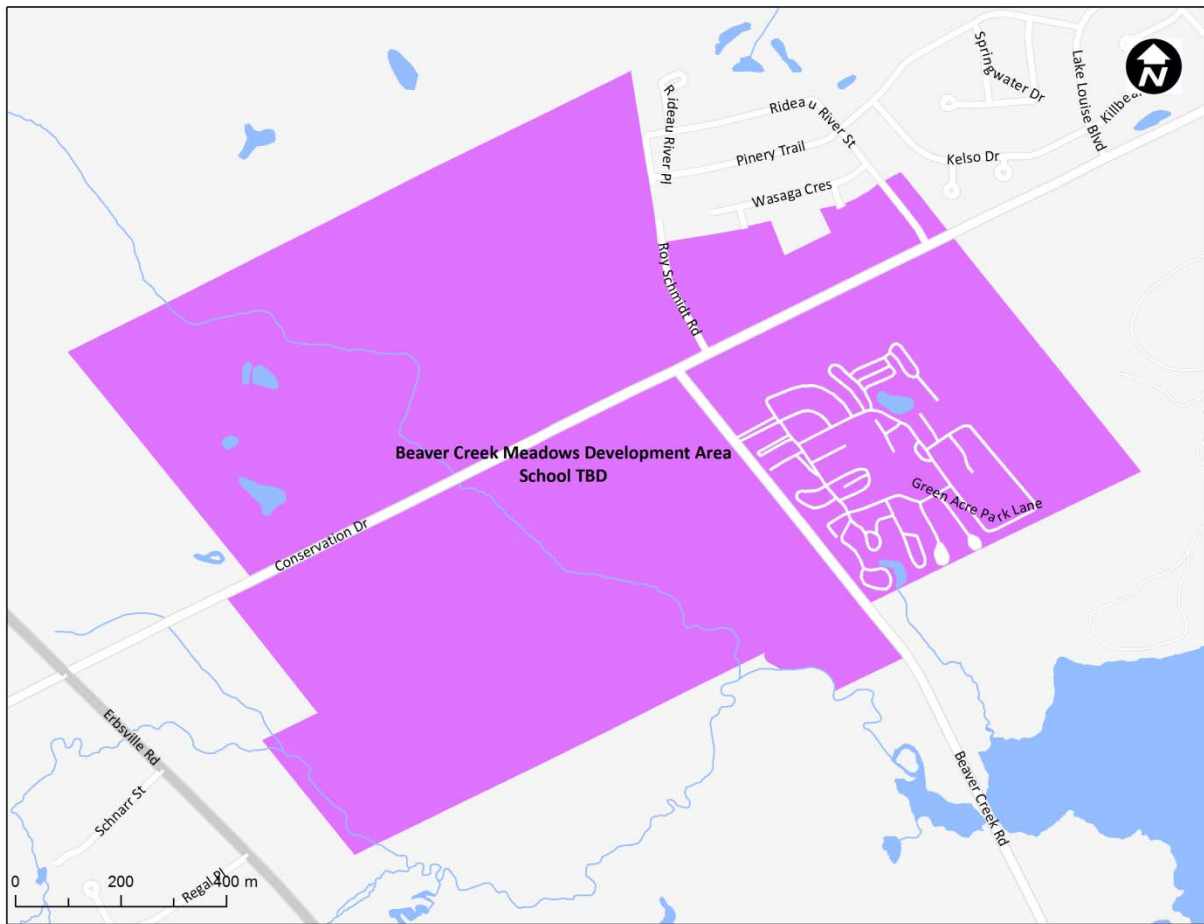
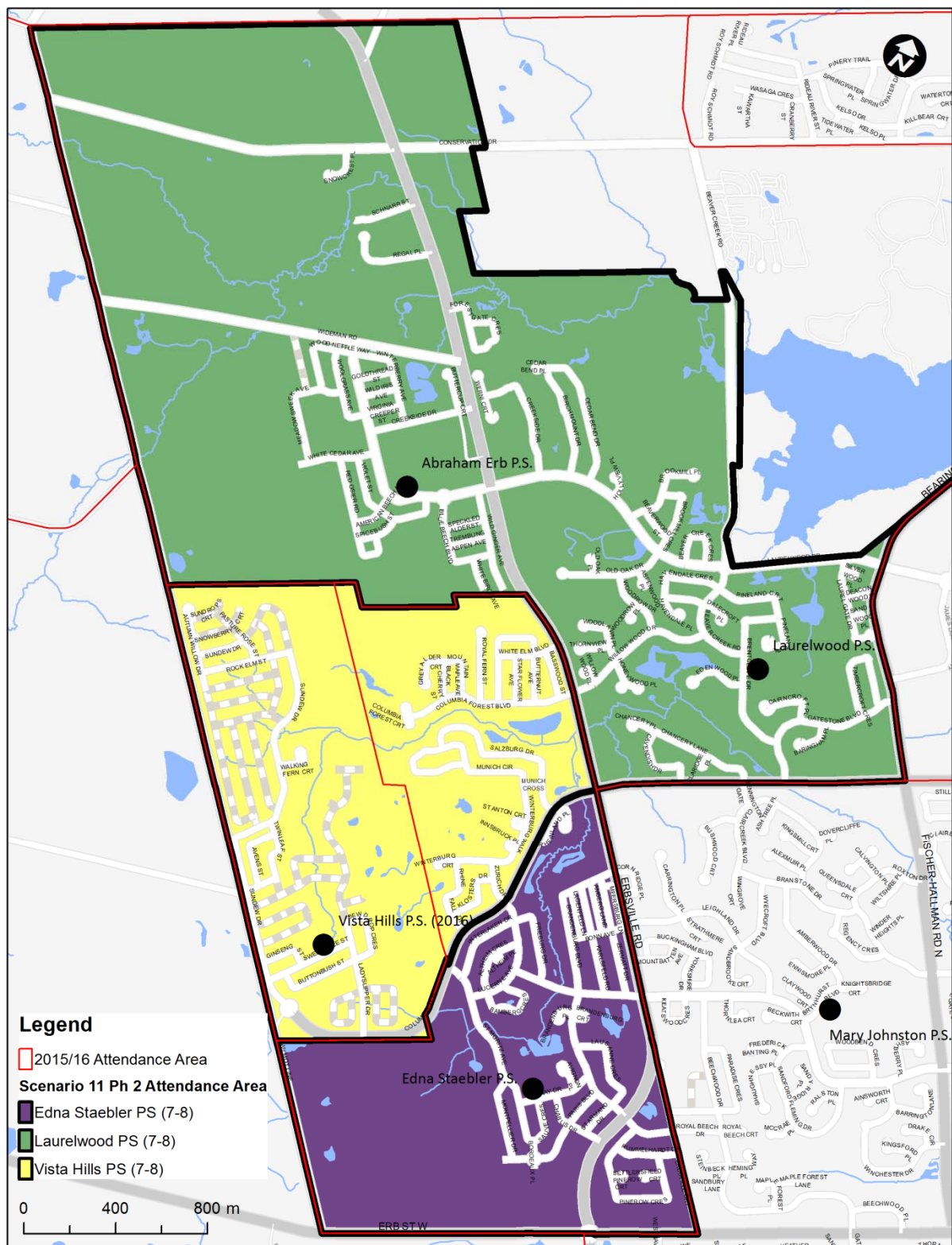


Figure 7: Scenario 11, Phase 2 Grade 7 to 8 Boundaries for Vista Hills, Edna Staebler and Laurelwood Public Schools



The enrolment projections for Scenario 11 are shown in **Table 8**.

Table 8: Scenario 11 Enrolment Projections (Total Enrolment by Year)

School	Capacity	Grades	Phase 1		Phase 2		
			2016	2018	2020	2022	2024
Abraham Erb PS	487	JK-6	410	390	335	355	360
Edna Staebler PS	706	JK-8	765	710	690	665	655
Laurelwood PS	375	JK-8	625	620	645	670	660
Mary Johnston PS	447	JK-6	435	430	435	440	445
Vista Hills PS	646	JK-8	340*	565	720	795	785
Total	2661		2575	2715	2845	2925	2905

*JK-7 only

The long-term enrolment projections for Laurelwood Public School suggest that the portapack classroom wing needs to be addressed with a more permanent solution. The implementation of this second phase would need to be reconfirmed once Vista Hills Public School has been in operation for a few years, and the residential development in the area has progressed further (between December 2018 and December 2020). Further public consultation would be required at that time. It is recommended that any commitment to a major capital project in the area, including an addition at Laurelwood Public School, be postponed until a final decision around Phase 2 is made.

There was a lot of discussion in all scenarios around the French Immersion program. All existing schools within the study area offer French Immersion classes; therefore, many area residents have asked about the potential for Vista Hills Public School to offer French Immersion. As in all cases, the addition of French Immersion to a school would follow the Board's *Administrative Procedure 1000 – Partial French Immersion* where a program would be started if the criteria outlined in the procedure are met. For the purpose of the enrolment projections in this study, it was assumed that a program could be offered at Vista Hills Public School beginning with Grade 1 only in the 2016/17 school year. The projections further assumed that French Immersion students falling within the Vista Hills Public School boundary would be grandfathered at their 2015/16 school. It is recommended that Learning Services and Planning staff determine the viability of offering French Immersion classes at Vista Hills Public School by no later than March 2016.

Scenario 14

Scenario 14 also involves two phases – Phase 1 is short-term and Phase 2 is long-term. It is expected that the Scenario 11 Phase 1 boundaries could be in place until approximately the 2020/21 school year. This scenario was developed as a means to address concerns expressed by Working Group members regarding students crossing Erbsville Road to attend Edna Staebler Public School.

Scenario 14, Phase 1:

- Vista Hills Public School JK-8 boundary includes the West Waterloo Development Area (temporarily assigned to Cedarbrae and Centennial Public Schools), and a portion of the Edna Staebler Public School boundary
- Abraham Erb Public School feeds Vista Hills Public School for Grades 7-8 instead of Laurelwood Public School
- Mary Johnston Public School boundary includes a portion of the Edna Staebler Public School boundary (the “Erbsville Triangle”)

- Centennial Public School boundary includes a portion of the Edna Staebler Public School boundary (the “Erbsville Triangle”)
- New Development Area boundary established (Beaver Creek Meadows District Plan Area – projection area B) where the school attendance area (temporary and/or long-term) will be determined at a future date

Figure 8 shows the Junior Kindergarten to Grade 6 boundaries for all of the schools under Scenario 14, Phase 1. Figure 9 shows the Grade 7 to 8 boundaries for Scenario 14, Phase 1.

Figure 8: Scenario 14 Junior Kindergarten to Grade 6 Boundaries

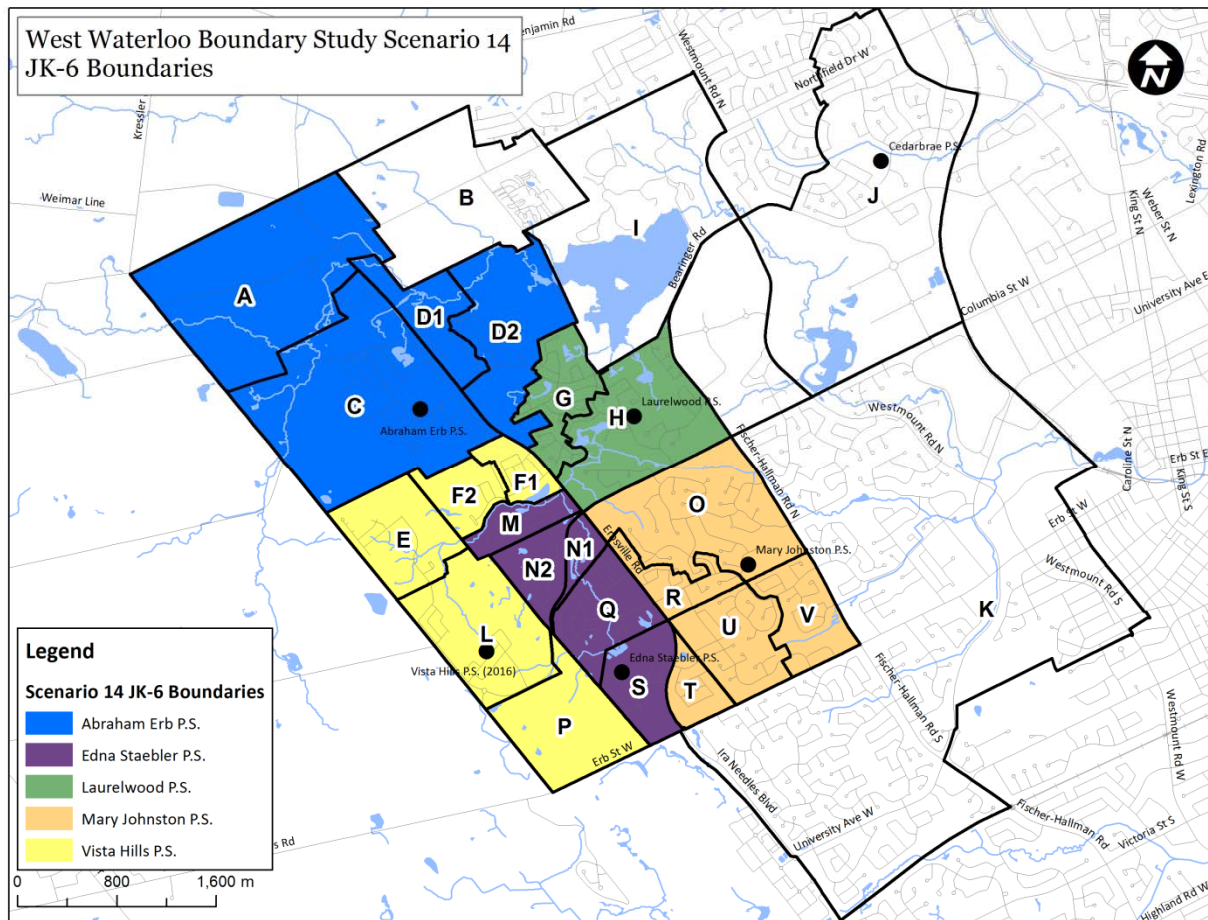
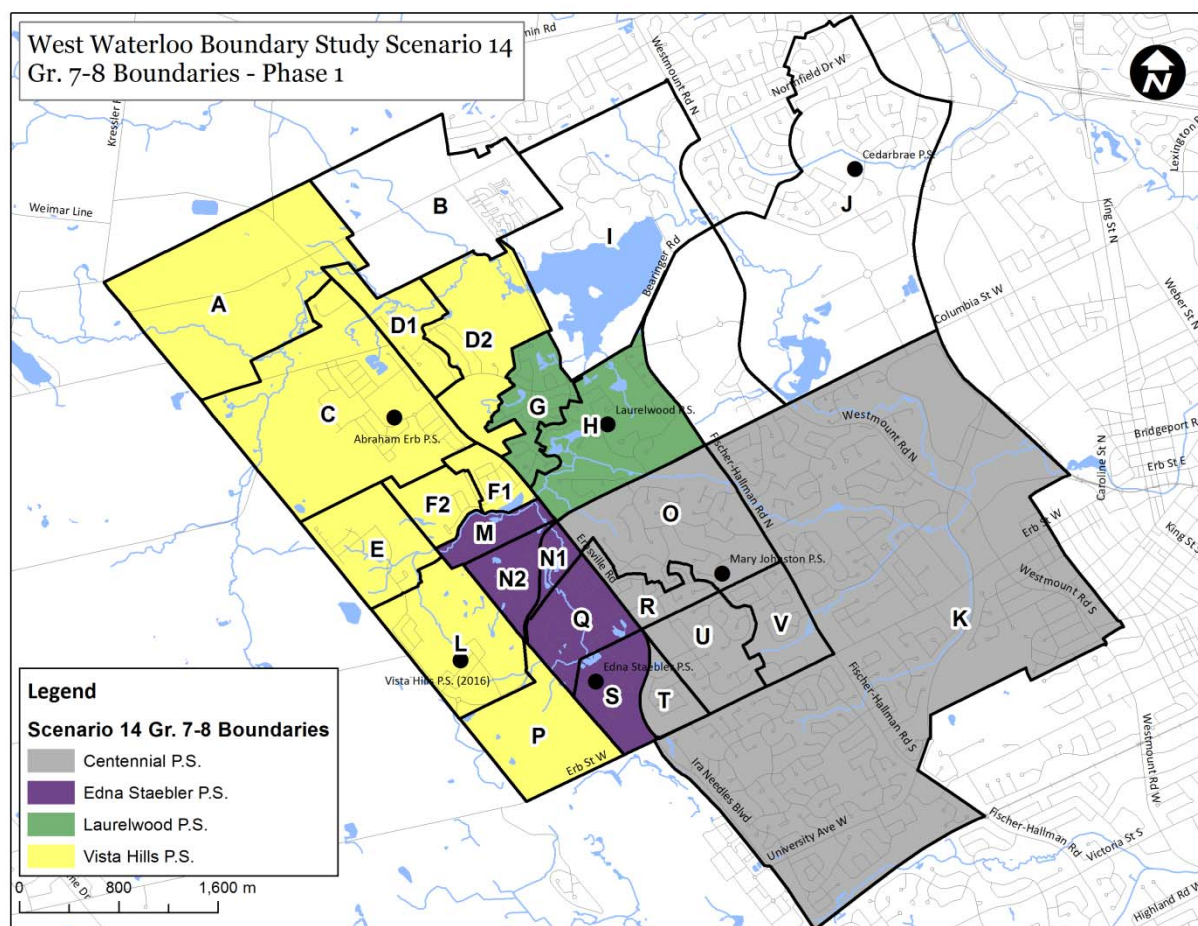


Figure 9: Scenario 14, Phase 1 Grade 7 to 8 Boundaries

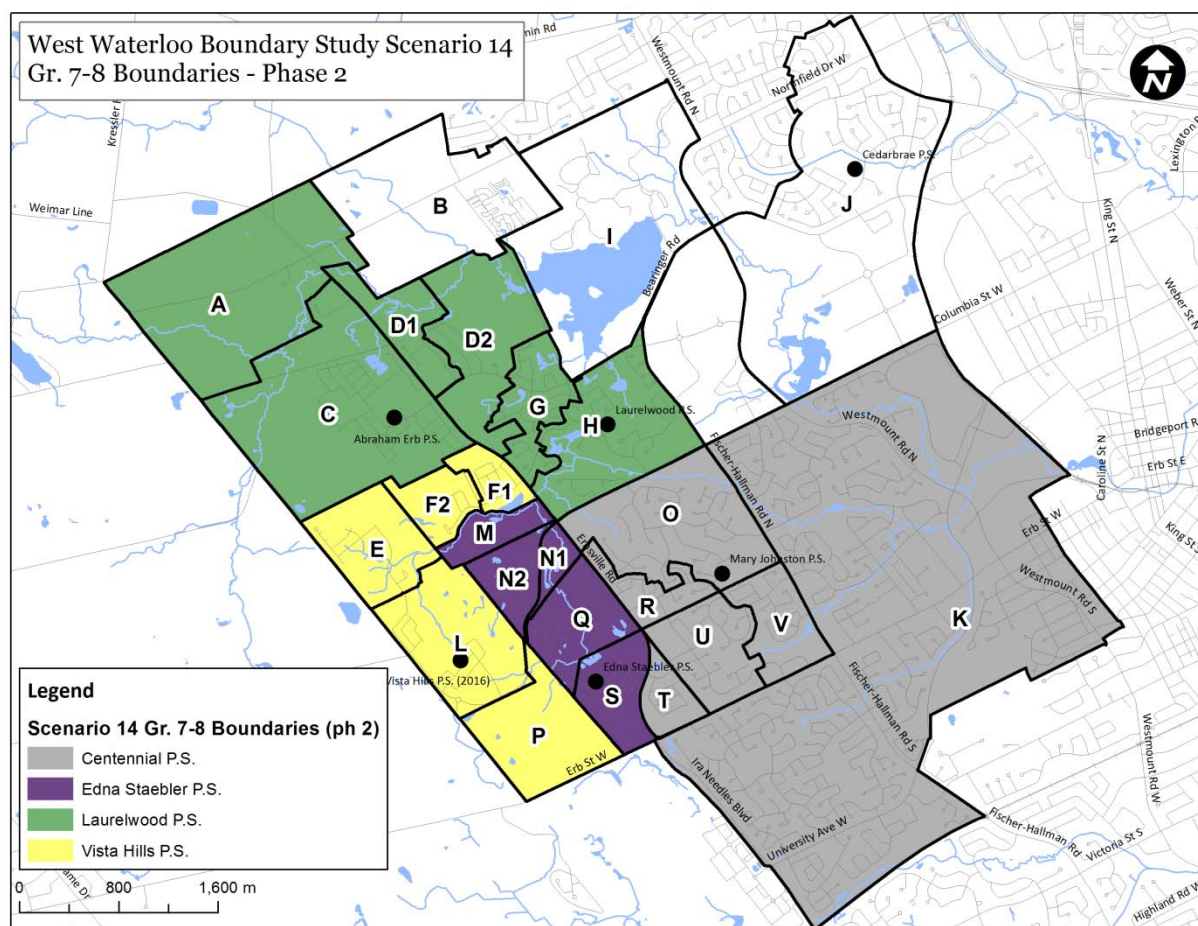


The second phase of Scenario 14 sees the Junior Kindergarten to Grade 6 boundaries remain the same as in Phase 1 (see **Figure 8**). The Grades 7 and 8 boundaries change for students in the Abraham Erb Public School JK-6 boundary (similar to Scenario 11, Phase 2). This area would move from Vista Hills Public School to Laurelwood Public School. This change can be seen in Figure 10.

Table 9: Scenario 14 Enrolment Projections (Total Enrolment by Year)

School	Capacity	Grades	Phase 1		Phase 2		
			2016	2018	2020	2022	2024
Abraham Erb PS	487	JK-6	410	390	355	355	360
Edna Staebler PS	706	JK-8	705	650	650	645	635
Laurelwood PS	375	JK-8	625	585	630	675	665
Mary Johnston PS	447	JK-6	540	525	510	505	505
Vista Hills PS	647	JK-8	280	535	665	725	730
Total	2662		2560	2685	2810	2905	2895

Figure 10: Scenario 14, Phase 2 Grade 7 to 8 Boundaries



The long-term enrolment projections for Laurelwood Public School suggest that the portapack classroom wing needs to be addressed with a more permanent solution (same as Scenario 11). The implementation of this second phase would need to be reconfirmed once Vista Hills Public School has been in operation for a few years, and the residential development in the area has progressed further (between December 2018 and December 2020). Further public consultation would be required at that time. It is recommended that any commitment to a major capital project in the area, including an addition at Laurelwood Public School, be postponed until a final decision around Phase 2 is made.

Further, enrolment at Mary Johnston Public School would exceed its current capacity and therefore require either temporary or permanent accommodation for students. The ancillary spaces available at Mary Johnston Public School, specifically the single gymnasium would likely make it challenging to accommodate the additional students resulting from Scenario 14 boundaries.

The enrolment projections for Scenario 14 are shown in Table 9. Although not shown Table 9, there would be an additional 10 to 30 students annually at Centennial Public School under this scenario. This is because the students in the Erbsville Triangle (referred to by the Working Group as projection area T) would be directed there as Mary Johnston Public School is one of its feeder schools. This would also mean additional transportation for Grade 7 and 8 students because they are not currently transported to Edna Staebler Public School, but would qualify for transportation to Centennial Public School.

The primary objective of Scenario 14 was to eliminate the need for students to cross Erbsville Road to attend Edna Staebler Public School; however, the Working Group had not heard from the families in this area (the Erbsville Triangle) to know if this crossing was a real or perceived issue. Therefore, neighbourhood meeting was held on September 30, 2015 to gain further insight into this issue. There are few people with concerns over crossing Erbsville Road; however, it was suggested that further safety measures could be put in place (e.g., Adult Crossing Guard or traffic signals). This group believed that other objectives of the study should take priority over the concerns for crossing Erbsville Road - specifically that students who live closest to the schools should attend there.

Achieving the Study Objectives

As Table 10 and Note: ABE = Abraham Erb PS, EST = Edna Staebler PS, LRW = Laurelwood PS, MJP = Mary Johnston PS, VIS = Vista Hills PS, CNW = Centennial PS

Table 11 show, Scenario 11 meets the majority of the study objectives in both phases, with a few exceptions.

Table 10: Scenario 11, Phase 1 versus the study objectives

Objective	ABE	EST	LRW	MJP	VIS
To establish a boundary for the new Vista Hills Public School	N/A				✓
To increase the number of classes instructed in permanent classrooms in a cost-effective way	Approx. 3-4 classrooms surplus	Approx. 0-3 classrooms needed	Approx. 11 classrooms needed	✓	Approx. 4-13 classrooms surplus
To provide equitable learning opportunities for students and staff by moving towards the following criteria:					
A minimum of 2 classes per grade in JK-6 (built capacity between 350 and 525 students)	✓	✓	✓	✓	✓
More than 2 classes per grade in Grades 7-8 (>100 students) to support program	N/A	✓	✓	N/A	✓
JK-8 facilities with a built capacity between 500 and 700 students	N/A	✗	✓	N/A	✓
Minimize the number of schools with enrolments over 700 students wherever possible	✓	✗	✓	✓	✓
Minimize the transition of elementary students between schools where practical	No change, attend VIS for 7-8	✓	✓	No change, attend CNW for 7-8	✓
To increase the number of students within a safe walking distance (e.g., signalized intersections to cross at, crossing guards present) to their assigned school (<1.6km)	✓	✓	✗ eliminated portion of 7-8 boundary w/i 1.6 km	✓	✓

Note: ABE = Abraham Erb PS, EST = Edna Staebler PS, LRW = Laurelwood PS, MJP = Mary Johnston PS, VIS = Vista Hills PS, CNW = Centennial PS

Table 11: Scenario 11, Phase 2 versus the study objectives

Objective	ABE	EST	LRW	MJP	VIS
To establish a boundary for the new Vista Hills Public School	N/A				✓
To increase the number of classes instructed in permanent classrooms in a cost-effective way	Approx. 5 classrooms surplus	Approx. 1-2 classrooms surplus	Approx. 12-13 classrooms needed	✓	Approx. 3-6 classrooms needed
To provide equitable learning opportunities for students and staff by moving towards the following criteria:					
A minimum of 2 classes per grade in JK-6 (built capacity between 350 and 525 students)	✓	✓	✓	✓	✓
More than 2 classes per grade in Grades 7-8 (>100 students) to support program	N/A	✓	✓	N/A	✓
JK-8 facilities with a built capacity between 500 and 700 students	N/A	✗	✓	N/A	✓
Minimize the number of schools with enrolments over 700 students wherever possible	✓	✓	✓	✓	✗
Minimize the transition of elementary students between schools where practical	No change, attend VIS for 7-8	✓	✓	No change, attend CNW for 7-8	✓
To increase the number of students within a safe walking distance (e.g., signalized intersections to cross at, crossing guards present) to their assigned school (<1.6km)	✓	✓	✓	✓	✓

Note: ABE = Abraham Erb PS, EST = Edna Staebler PS, LRW = Laurelwood PS, MJP = Mary Johnston PS, VIS = Vista Hills PS, CNW = Centennial PS

As Table 12 and Table 13 show, Scenario 14 also meets fewer of the study objectives than Scenario 11.

Table 12: Scenario 14, Phase 1 versus the study objectives

Objective	ABE	EST	LRW	MJP	VIS
To establish a boundary for the new Vista Hills Public School	N/A				✓
To increase the number of classes instructed in permanent classrooms in a cost-effective way	Approx. 3-4 classrooms surplus	Approx. 0-2 classroom surplus	Approx. 11 classrooms needed	Approx. 4-5 classrooms needed	Approx. 7-16 classrooms surplus
To provide equitable learning opportunities for students and staff by moving towards the following criteria:					
A minimum of 2 classes per grade in JK-6 (built capacity between 350 and 525 students)	✓	✓	✓	✓	✗
More than 2 classes per grade in Grades 7-8 (>100 students) to support program	N/A	✓	✓	N/A	✓
JK-8 facilities with a built capacity between 500 and 700 students	N/A	✗	✓	N/A	✓
Minimize the number of schools with enrolments over 700 students wherever possible	✓	✓	✓	✓	✓
Minimize the transition of elementary students between schools where practical	No change, attend VIS for 7-8	✓	✓	No change, attend CNW for 7-8	✓
To increase the number of students within a safe walking distance (e.g., signalized intersections to cross at, crossing guards present) to their assigned school (<1.6km)	No change	✗	✗	✗ added JK-SK busing	✓

Note: ABE = Abraham Erb PS, EST = Edna Staebler PS, LRW = Laurelwood PS, MJP = Mary Johnston PS, VIS = Vista Hills PS, CNW = Centennial PS

Table 13: Scenario 14, Phase 2 versus the study objectives

Objective	ABE	EST	LRW	MJP	VIS
To establish a boundary for the new Vista Hills Public School	N/A				✓
To increase the number of classes instructed in permanent classrooms in a cost-effective way	Approx. 5 classrooms surplus	Approx. 2 classrooms surplus	Approx. 12-13 classrooms needed	Approx. 3 classrooms needed	Approx. 0-3 classrooms needed
To provide equitable learning opportunities for students and staff by moving towards the following criteria:					
A minimum of 2 classes per grade in JK-6 (built capacity between 350 and 525 students)	✓	✓	✓	✓	✓
More than 2 classes per grade in Grades 7-8 (>100 students) to support program	N/A	✓	✓	N/A	✓
JK-8 facilities with a built capacity between 500 and 700 students	N/A	✗	✓	N/A	✓
Minimize the number of schools with enrolments over 700 students wherever possible	✓	✓	✓	✓	✗
Minimize the transition of elementary students between schools where practical	No change, attend LRW for 7-8	✓	✓	No change, attend CNW for 7-8	✓
To increase the number of students within a safe walking distance (e.g., signalized intersections to cross at, crossing guards present) to their assigned school (<1.6km)	No change	✗	✗	✗, added JK-SK busing	✓

Note: ABE = Abraham Erb PS, EST = Edna Staebler PS, LRW = Laurelwood PS, MJP = Mary Johnston PS, VIS = Vista Hills PS, CNW = Centennial PS

Boundary Recommendations

In order to achieve the overall goals and objectives established for the West Waterloo Boundary Study, it is recommended that the Waterloo Region District School Board adopt Scenario 11 as the boundary solution for the West Waterloo Boundary Study area.

The recommendations that coincide with Scenario 11 involve the following:

Recommendation #1: Establish a boundary for Vista Hills Public School

- That the Waterloo Region District School Board approve the boundary for Vista Hills Public School for Junior Kindergarten to Grade 8 students, as illustrated on Figure 4 and Figure 5 of this report, modifying the boundaries for Edna Staebler and Laurelwood Public Schools, and the West Waterloo Development Area, effective September 2016; and
- That Grade 8 students in the Vista Hills Public School boundary remain at their 2015/16 assigned school for the 2016/17 school year; and
- That transportation for those who qualify based on *Board Policy 4009: Student Transportation* and *Administrative Procedure 4260: Student Transportation* be extended to those Grade 8 students attending their 2015/16 assigned school for the 2016/17 school year; and
- That Learning Services and Planning staff determine the viability of offering French Immersion classes at Vista Hills Public School by no later than March 2016; and
- That students and their siblings within the Vista Hills Public School boundary, as illustrated on Figure 4 and Figure 5 of this report, enrolled in French Immersion who must attend a school out of boundary because that grade level is not offered at Vista Hills Public School, have the option to stay at their school as of June 29, 2016 to remain enrolled in a French Immersion program;

however, Student Transportation is governed by *Board Policy 4009: Student Transportation* and *Administrative Procedure 4260: Student Transportation* – if a student is not eligible for transportation under the terms outlined therein, transportation to and from school will be the sole responsibility of the parent/guardian

•

Recommendation #2: Realign Edna Staebler Public School's Boundary

- That the Waterloo Region District School Board approve the boundary change between Edna Staebler and Vista Hills Public Schools as illustrated on Figure 4 and Figure 5 of this report, effective September 2016 for Junior Kindergarten to Grade 7 students and September 2017 for Grade 8 students; and
- That students and their siblings within the 2015/16 Edna Staebler Public School boundary, as illustrated on Figure 1 of this report, enrolled in French Immersion on June 29, 2016 who do not fall within the Edna Staebler Public School boundary as illustrated on Figure 4 and Figure 5 of this report, have the option to stay at Edna Staebler Public School as long as one sibling remains enrolled in a French Immersion program; however, Student Transportation is governed by *Board Policy 4009: Student Transportation* and *Administrative Procedure 4260: Student Transportation* – if a student is not eligible for transportation under the terms outlined therein, transportation to and from school will be the sole responsibility of the parent/guardian

Recommendation #3: Realign Laurelwood Public School's Boundary

- That the Waterloo Region District School Board approve the boundary change between Laurelwood and Vista Hills Public Schools as illustrated on Figure 5 of this report, effective September 2016 for Grade 7 students and September 2017 for Grade 8 students; and
- That the Waterloo Region District School Board direct staff to present a report and recommendations to the Board of Trustees between December 2018 and December 2020 to reconfirm the second phase of Scenario 11 as described in this report, including additional public consultation on Phase 2.

Recommendation #4: Establish Beaver Creek Meadows Development Area

- That the Waterloo Region District School Board approve the boundary for the Beaver Creek Meadows Development Area, illustrated on Figure 6 of this report, effective immediately.

Further Considerations

There were several facility and site issues highlighted at the outset of this boundary study. While it is not the role of the boundary study to address all of these issues, some may be addressed through the reduction of enrolment and staff at a school. One of the issues that will not be fully resolved through this boundary study is parking at Mary Johnston and Laurelwood Public Schools. It is recommended that the schools explore alternative options to address these issues prior to investing in additional parking spaces. One suggestion would be to provide incentives, such as priority parking spaces, for staff that carpool.

The Waterloo Region District School Board has endorsed active transportation as the preferred means for students and staff to arrive at school. It is for this reason it is recommended that staff continue to work with the City of Waterloo, Region of Waterloo and Active and Safe Routes to School Waterloo Region to determine if further measures (e.g., traffic signals, adult crossing guards,

stop signs, speed limit reductions, etc.) could improve safety at the following intersections identified in this boundary study:

- Erbsville Road and Chablis Drive
- Erbsville Road and Brandenburg Boulevard/Royal Beech Drive
- Bernay Drive and Chablis Drive

Based on the proposed boundary changes, there will be schools with grandfathered French Immersion students who will no longer be eligible for transportation. This will undoubtedly increase the volume of vehicular traffic around the school sites during morning and afternoon bell times. It will be important for board staff to work with the Active & Safe Routes to School committee, including the City of Waterloo, to identify locations where student pick-up and drop-off can safely take place without increasing traffic congestion around the school sites. These locations will need to be established and communicated to families prior to September 2016.

It is also recommended that all schools in the study area develop a School Travel Plan (STP). The STP process is designed to address barriers to active travel caused by attitudes and car-dominated design in school neighbourhoods in an effort to reduce the health risk to children.

Conclusion

After consultation and careful deliberation, staff developed final recommendations for Scenario 11 that meet the majority of the study objectives. These recommendations have been endorsed by the Working Group. The recommendations provide the best accommodation solution for current and future students in the study area by providing the Board with the ability to address the majority of the issues identified at the outset of the study.

Regardless of the solution implemented, there remains some concern over the enrolment projected at Vista Hills Public School in the first few years of operation. When the funding was approved for the construction of the school, it was assumed that development activity in the area would have progressed much faster than it has. A two phased approach that recognizes the available capacity at a new facility to alleviate the enrolment pressures at Edna Staebler and Laurelwood Public Schools over the short to medium-term was endorsed by the Working Group.

Due to the projected growth in this area of Waterloo into the next 10 years, it is anticipated that these boundaries will need to be continually monitored and likely will require additional modifications in the future. By establishing the Beaver Creek Meadows Development Area, there is greater flexibility in terms of where new development will be assigned, reducing the potential for further short-term boundary modifications.

In closing, staff would like to thank the Working Group, as well as the parents and community members who attended the public meetings and expressed their concerns and provided input and feedback throughout the boundary study process.