

SOUTHWEST KITCHENER SECONDARY BOUNDARY STUDY

Working Group Kick Off Meeting

NOVEMBER 27, 2018

AGENDA

Introductions

Boundary Study Process

- **What is a Boundary Study**
- **Role of the Committee**

Boundary Study Overview

- **Status Quo**

Two Accommodation Options from Initial Report

Accommodation Option Criteria

School Profiles

Study Timeline/Meeting Schedule

Round Table

BOUNDARY STUDY

What is a Boundary Study?

A boundary study is a public process undertaken to change the attendance area (boundary) of one or more schools

The Board may consider a boundary study for several reasons, including :

- When a new school opens
- To balance enrolment between schools
- Grade or program changes (ie: JK-6 to JK-8)

BOUNDARY STUDY WORKING GROUP

Working Group Composition

- Up to 3 parents/guardians from each of the Study Area Schools (total of 9)
- Up to 2 students from each of the Study Area Schools (total of 6)
- Coordinating Superintendent, Business Services (Matt Gerard)
- Superintendents of Achievement and Well Being (Ron DeBoer, Bill Lemon, Graham Shantz)
- School Administrators (Jeff Klinck (HHSS), Tina Rowe (FHCI), Ray Teed (CHCI))
- Planning Staff (Working Group Chairs)

WORKING GROUP ROLES

Parent/Guardian and Student Members

- Attend and participate in all meetings
- Look at the big picture, keep an open mind
- Represent whole school / community
- Be solutions focused
- Be collaborative, a team player

Staff Members

- Attend and chair all meetings
- Bring data back to the committee as requested
- Guide committee through the process and coordinate feedback
- Draft the final recommendation report
- Implement final approved changes

PROCESS

Identify Issues

Develop
Objectives

Develop
Scenarios

Evaluate
Scenarios*

Final
Recommendation

Board Decision

Initial 2 Options were developed by staff team.

Additional options may be developed with the Working Group.

WORKING GROUP

- Explain process
- Present background info and two accommodation options
- Identify issues
- Discuss limitations

- Discuss issues
- Develop objectives

- Review public feedback
- Develop scenarios

- Identify preferred scenario
- Review transitions

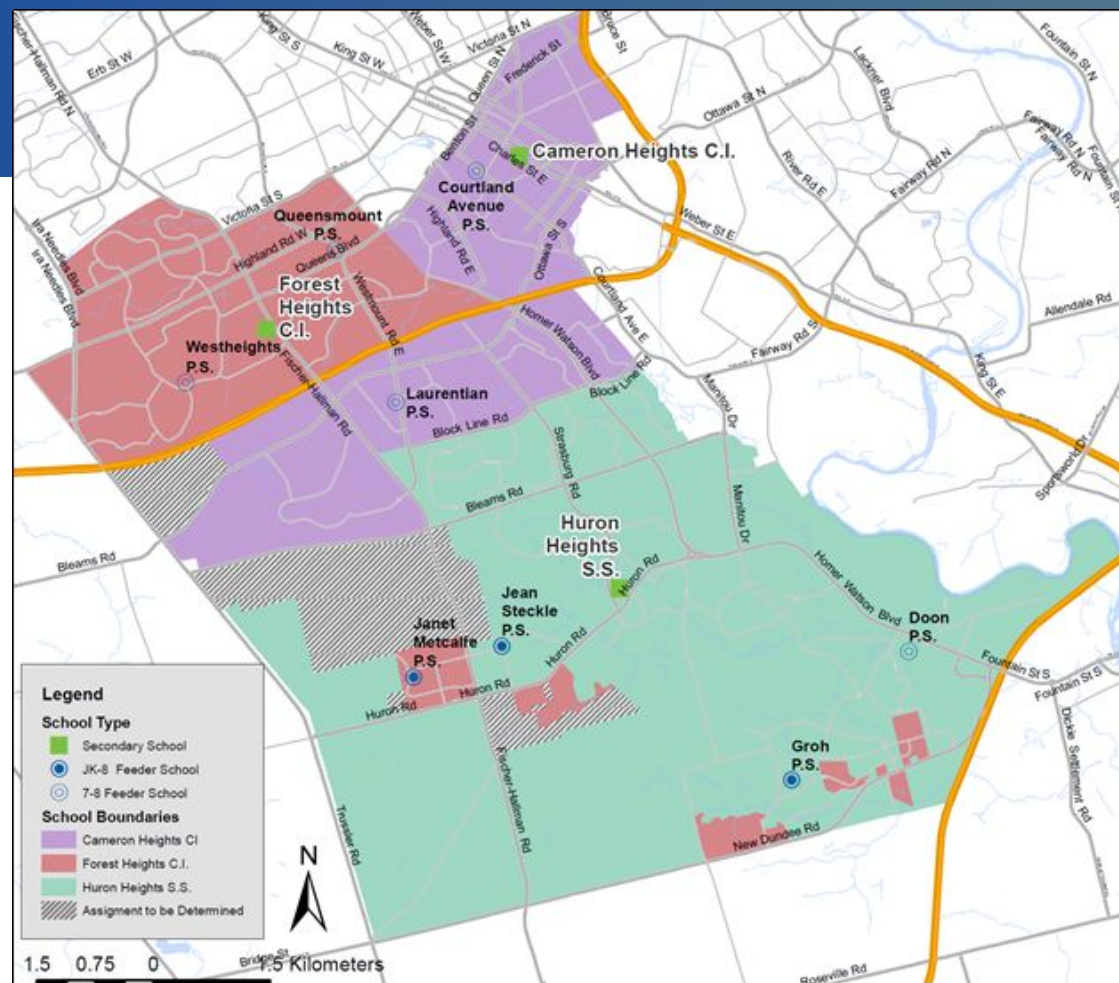
- Review public feedback
- Confirm preferred scenario

PUBLIC MEETINGS

- Explain process
- Identify issues/objectives
- Review background
- Review two initial accommodation options
- Receive feedback

- Present preferred scenario(s)
- Receive feedback

STUDY AREA



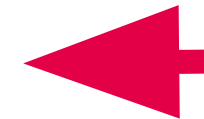
STUDY AREA MAP

<https://arcg.is/1XbS8y>

STATUS QUO ENROLMENT PROJECTIONS

Table 1 - Status Quo Enrolment Projections

School	Grades	2018 Capacity		Enrolment (ADE*)/ Utilization (%)					
		OTG	Portables	2018	2020	2022	2024	2026	2028
CHCI	9-12	1596	6	1778	1760	1735	1756	1707	1672
				111%	110%	109%	110%	107%	105%
FHCI	9-12	1272	0	1046	1115	1204	1294	1288	1271
				82%	88%	95%	102%	101%	100%
HHSS	9-12	1224	12	1522	1814	1909	1957	2002	2023
				124%	148%	156%	160%	164%	165%



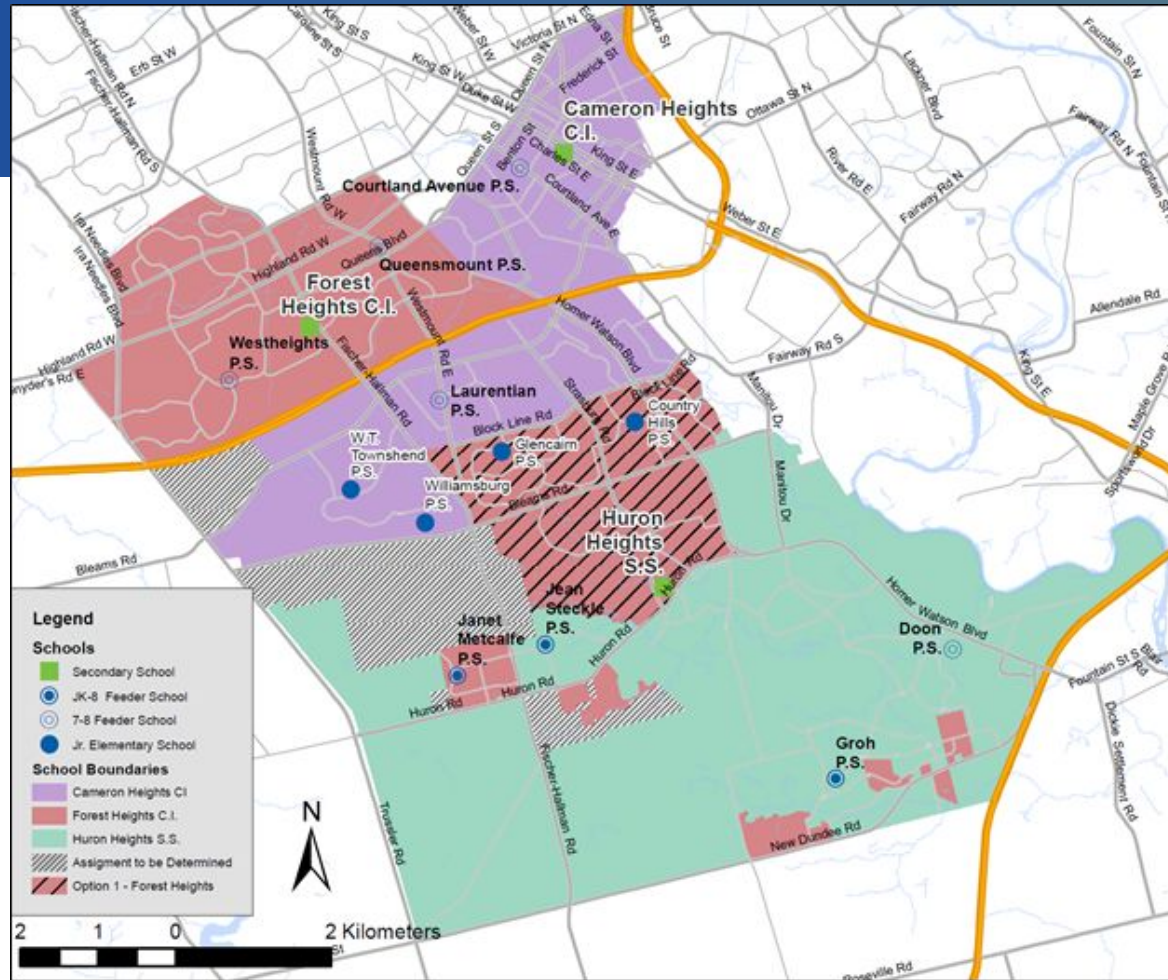
HURON HEIGHTS CURRENT SITUATION

- Huron Heights Secondary School's utilization is nearly 125% in 2018
- A number of operational changes have been made to accommodate the current enrolment (1522) at Huron Heights Secondary School
 - Six Period Day (double lunch)
 - Doon South and Mattamy Wildflowers Development Areas assigned to Forest Heights Collegiate Institute
 - placement of two additional portables for new total of 12

IMPLICATIONS OF THE STATUS QUO

- continued enrolment imbalance in the study area
- utilizations up to 165% at Huron Heights Secondary school
- could exceed maximum allowable portable classrooms at Huron Heights
- there is available school capacity and site space for portables at Forest Heights Collegiate Institute
- Specialty rooms (e.g. Science Labs and Gymnasiums) fully utilized at Huron Heights Secondary School
- Specialty Rooms are available at Forest Heights and Cameron Heights Collegiate Institute

SCENARIO 1 MAP



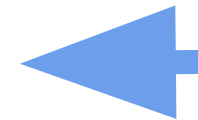
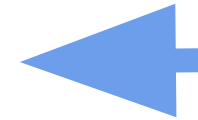
ACCOMMODATION OPTION MAPS

<https://arcg.is/1XbS8y>

SCENARIO 1 ENROLMENT PROJECTIONS

Table 4 - Scenario 1 Enrolment Projections

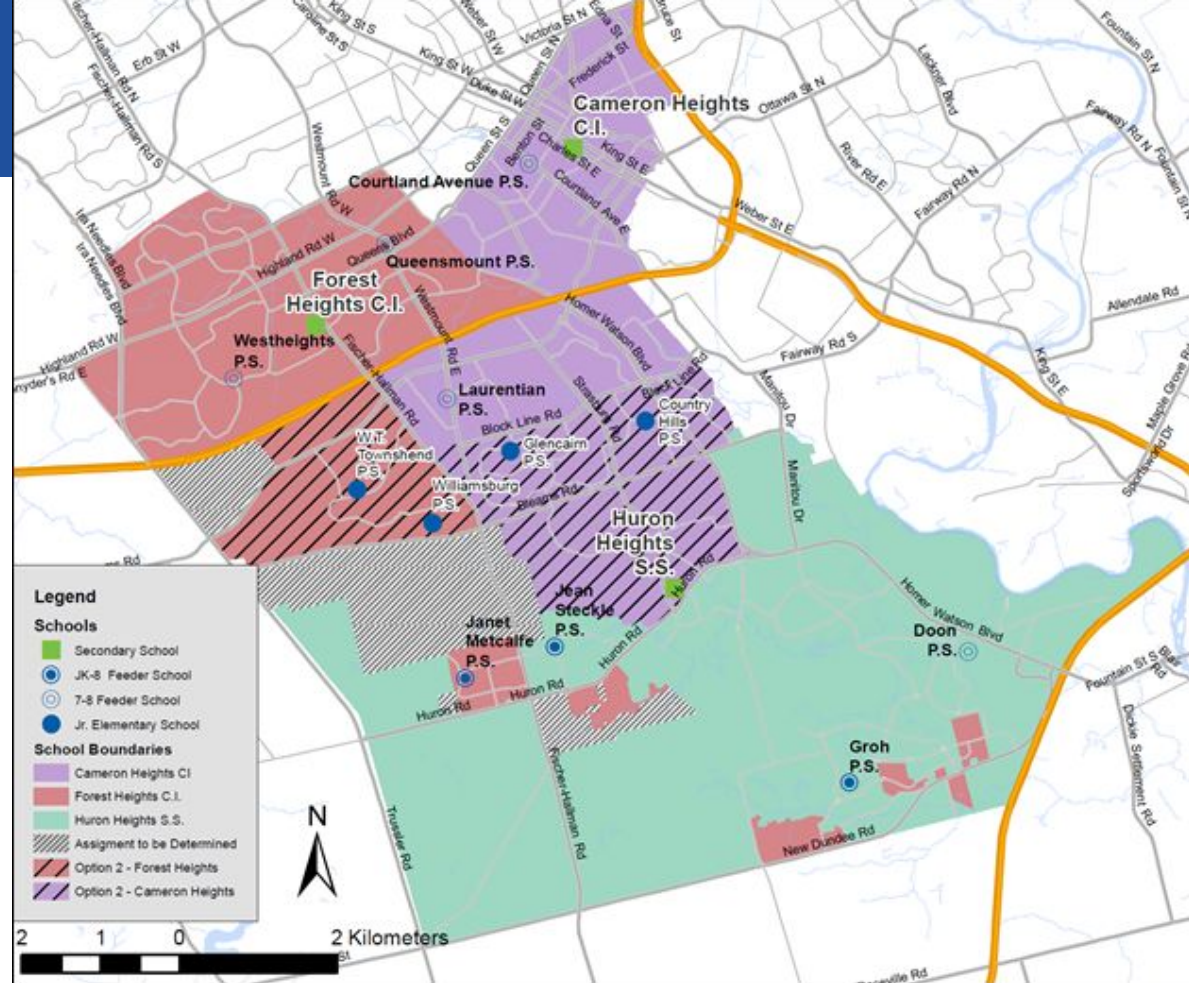
School	Grades	2018 Capacity		Enrolment (ADE*)/ Utilization (%)					
		OTG	Portables	2018	2020	2022	2024	2026	2028
CHCI	9-12	1596	6	1778	1760	1735	1756	1707	1672
				111%	110%	109%	110%	107%	105%
FHCI	9-12	1272	0	1046	1450	1616	1714	1694	1675
				82%	114%	127%	135%	133%	132%
HHSS	9-12	1224	12	1522	1481	1497	1525	1584	1611
				124%	121%	122%	125%	129%	132%



SCENARIO 1 IMPLICATIONS

- enrolment more balanced in the study area
- reduced split feed from Laurentian (removes HHSS)
- five additional buses needed (estimated cost of \$210K annually)

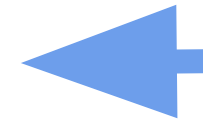
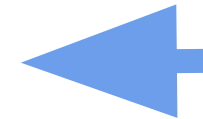
SCENARIO 2 MAP



SCENARIO 2 ENROLMENT PROJECTIONS

Table 5 - Scenario 2 Enrolment Projections

School	Grades	2018 Capacity		Enrolment (ADE*)/ Utilization (%)					
		OTG	Portables	2018	2020	2022	2024	2026	2028
CHCI	9-12	1596	6	1778	1634	1688	1747	1714	1715
				111%	102%	106%	109%	107%	107%
FHCI	9-12	1272	0	1046	1574	1668	1722	1687	1631
				82%	124%	131%	135%	133%	128%
HHSS	9-12	1224	12	1522	1481	1497	1525	1584	1611
				124%	121%	122%	125%	129%	132%



SCENARIO 2 IMPLICATIONS

- enrolment better balanced in the study area but FHCI does experience a significant jump in 2020
- split feeds are reduced
- no increase in transportation costs (increase in one area offset by decrease in another)

DRAFT BOUNDARY STUDY OBJECTIVES

- efficiency of transportation (students within walking distance, bus routes)
- permanent capacity of schools and/or future construction requirements (e.g., site, program spaces, safety)
- impact on feeder and surrounding schools (i.e., Grade 8 students moving to secondary school)
- minimizing the impact on students where changes are proposed (e.g., consideration for grandfathering, phased implementation)

STUDY TIMELINE

For a September 2020 implementation, Trustees would need to make a decision on this boundary study by June or September 2019 - prior to the fall 2019 Grade 8 Information nights.

We would like to see a decision earlier to ensure maximum time for communication of the changes. The goal is to have a final decision in late spring 2019.

- Working Group Meeting Dates
 - Meeting 2 - Week of December 10, 2018
 - Meeting 3 - Week of January 7, 2019
 - Meeting 4 - Week of January 21, 2019

Item	Description	Timeline
First Report	Share status quo projection and two Scenarios, outline committee composition and timelines	November 2018 (Completed)
Working Group Kick Off and second meeting	Provide an overview of the Boundary Study process, review the initial report and options, identify top criteria for assessing boundary options, plan for the first public meeting	December 2018
First Public Meeting/Open House	Present the initial report to the Study Area school communities, feeder school communities and broader public. Receive feedback on the initial options.	January 2019
Working Group third and fourth meetings	Plan for public meeting, receive and discuss feedback after first public meeting.	January 2019
Second Public Meeting/Open House	Present update from the Working Group, potentially share a recommended boundary and implementation options	February/March 2019
Final Working Group Meetings	Receive and discuss feedback from second public meeting, make any necessary revisions to the final recommendation, conclude Group work.	March 2019
Final Report to Board	<p>A final recommendation will be presented to the Board of Trustees. Delegations may be heard. Trustees will vote on the recommendation(s). The decision will be ratified at the following Board meeting.</p> <p>Trustees may or may not approve the recommendations as presented. Trustees may request modifications to the recommended boundary or its implementation.</p>	April 2019

COMMUNICATION

- boundaryfeedback@wrdsb.ca
- Staff Meetings have been set up for at each of the three study area schools
- web page posts have been directed to study area schools as well as grade 8 feeder schools
- A boundary study webpage has been published - <https://www.wrdsb.ca/planning/southwest-kitchener-secondary-boundary-study/>

ROUND TABLE





INNOVATING TOMORROW BY EDUCATING TODAY

51 Ardelt Avenue
Kitchener, ON N2C 2R5
tel: 519.570.0003
WEB: WRDSB.CA



[FACEBOOK.COM/WRDSB](https://www.facebook.com/WRDSB)



[TWITTER.COM/WRDSB](https://twitter.com/WRDSB)



[INSTAGRAM.COM/WR_DSB](https://www.instagram.com/WR_DSB)



[YOUTUBE.COM/WRDSBVIDEO](https://www.youtube.com/WRDSBVIDEO)