



FISCHER-HALLMAN/HURON ELEMENTARY SCHOOLS BOUNDARY STUDY

WORKING GROUP MEETING #4

NOVEMBER 7, 2017

AGENDA

1. Welcome/Introductions
2. Minutes Review/Approval
3. Scenario Feedback
4. Draft Objectives
5. Scenario Review
6. Future Meeting Dates
7. Round table

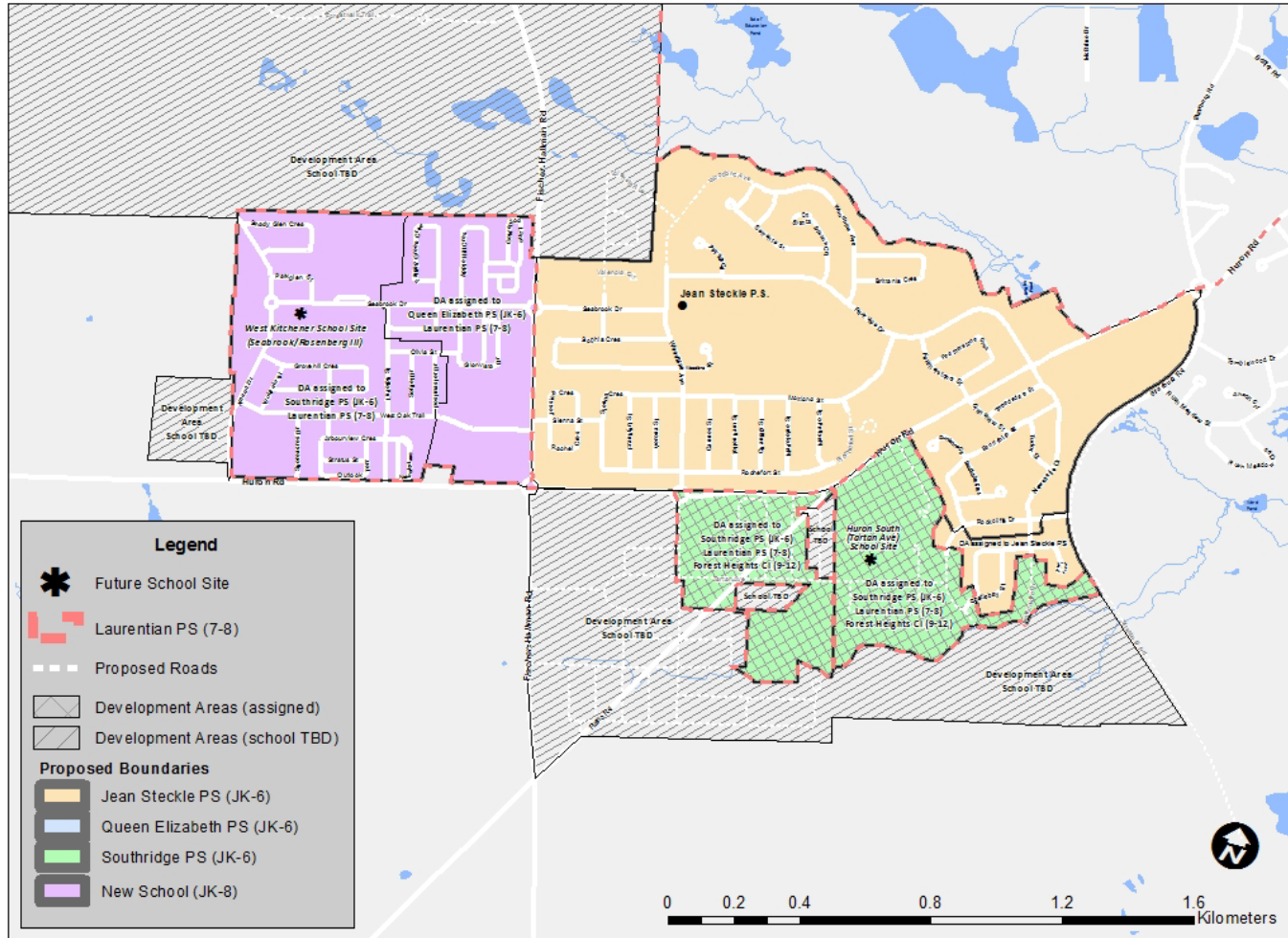
SCENARIO FEEDBACK

- Concerns re: safe crossing of Fischer Hallman Rd.
- Number of transitions for Huron Woods neighbourhood (with anticipated opening of new Tartan Ave. school)
- French Immersion program access
- Transitions
 - Impacts on students
 - Impacts on existing caregiver arrangements

DRAFT OBJECTIVES

- Establish school attendance boundary for new Elementary school
- Reduce enrolment at Jean Steckle PS
- Maximize the use of built permanent capacity/Minimize the need for temporary accommodation (portables)
- Minimize transitions where changes are proposed

SCENARIO 2 - DESCRIPTION



- New boundary established for 335 Seabrook Dr. school consisting of Mattamy 'Wildflowers' subdivision
- Grade 7, 8 phased out of Jean Steckle PS to be accommodated at new Seabrook Dr. school, phased back in when enrolment pressure allows

PROJECTED ENROLMENT – SCENARIO 2

School	Grades	Enrolment						Capacity (OTG)**
		2018	2020	2022	2024	2026	2028	
Jean Steckle PS	JK-6	863	840	829	788	760	727	715
Queen Elizabeth PS	JK-6	247	212	201	198	198	198	358
Southridge PS	JK-6	420	477	528	555	581	583	518
Laurentian PS	7-8	440	451	433	448	415	420	421
New School	JK-8*	350	489	549	578	569	559	669
Total		2320	2469	2540	2567	2523	2487	2681

*New school will open as JK-7 in 2018, adding Gr. 8 in 2019

**OTG (On-the-ground) capacity. Ministry of Education measure describing school capacity

SCENARIO 2

PROPOSED SCENARIO TRANSITIONS

SOUTHRIDGE PUBLIC SCHOOL

- ‘Wildflowers’ community students to attend new school Sept. 2018
 - Option for 2018 Gr. 6 students to finish at Southridge PS (with transportation), no siblings
 - French Immersion – students may remain at Southridge PS for the French Immersion program (with siblings). Transportation will not be provided (In accordance with Board Procedure – 4260 section 15.1)

QUEEN ELIZABETH PUBLIC SCHOOL

- Wildflowers’ community students to attend new school Sept. 2018
 - Option for 2018 Gr. 6 students to finish at Queen Elizabeth PS (with transportation), no siblings

SCENARIO 2

PROPOSED SCENARIO TRANSITIONS

LAURENTIAN PUBLIC SCHOOL

- ‘Wildflowers’ community students to attend new school Sept. 2018
 - 2018 Gr. 8 students to finish at Laurentian PS (with transportation), no siblings

JEAN STECKLE PUBLIC SCHOOL

- 2018 Gr. 7 students to attend new school (Jean Steckle PS JK-6, 8)
- 2019 Gr. 7 and Gr. 8 students to attend new school (Jean Steckle PS JK-6)
 - Transportation provided in accordance with Board Policy 4009 (if eligible by distance)

SCENARIO 2 – DRAFT OBJECTIVES

SCENARIO EVALUATION

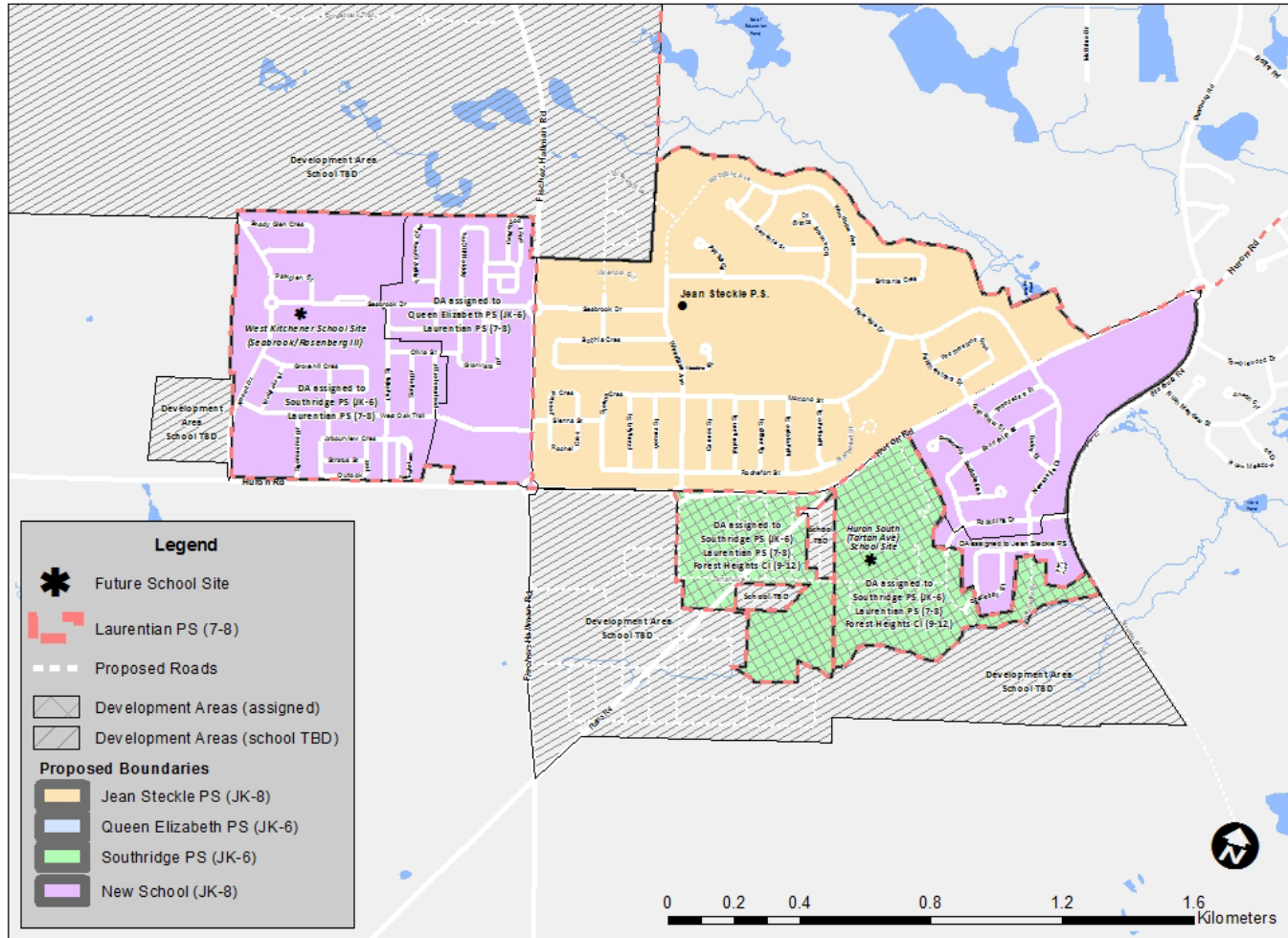
Draft Objective	Comments
Establish school attendance boundary for new Elementary school	<ul style="list-style-type: none">• Yes.
Reduce enrolment at Jean Steckle PS	<ul style="list-style-type: none">• Yes. Peak enrolment reduced at Jean Steckle PS by 194 students
Maximize the use of built permanent capacity/Minimize the need for temporary accommodation (portables)	<ul style="list-style-type: none">• Reduces portables at Jean Steckle PS.• Accommodates most students in permanent capacity than other options.
Minimize transitions where changes are proposed	<ul style="list-style-type: none">• Transitions for Queen Elizabeth, Southridge students to new school.• Students ‘graduate’ into new school from Jean Steckle when changing to JK-6 organization.• Students ‘graduate’ back to Jean Steckle when Gr. 7, 8 returned.
Other	<ul style="list-style-type: none">• Program challenges – FI grade disconnect at new facility. Staff and resources.

SCENARIO 2 – SCENARIO EVALUATION

DISCUSSION WITHIN CONTEXT OF COMMUNITY FEEDBACK

Feedback	Discussion
Pedestrian Crossing @ Fischer-Hallman	<ul style="list-style-type: none"> Some students ineligible for transportation (<1600m from new school) expected to cross. (30 for Sept. 2018, increasing to 90 by 2021)
Number of transitions for Huron Woods neighbourhood	<ul style="list-style-type: none"> Transition to new Seabrook Dr. school (Gr. 6 to 7). Somewhat mitigated in that moving entire grade cohorts (Grade 7 and then 8).
French Immersion (F.I.) program access	<ul style="list-style-type: none"> Entire current (2017) Jean Steckle PS boundary remains ‘in-boundary’ for F.I. Loss of access to ‘in-boundary’ French Immersion program for current ‘Wildflowers’ Southridge PS F.I. students New Seabrook Dr. School potential to open with Gr. 1 F.I. (depending on demand)
Transitions – Impact on students	<ul style="list-style-type: none"> All students in Gr. 7, 8 move to new school together maintaining relationships Students may be separated from younger siblings earlier than if Jean Steckle remained JK-8 (would have separated for high school regardless)
Transitions impact on existing caregiver relationships	

SCENARIO 3 - DESCRIPTION



- New boundary established for 335 Seabrook Dr. school consisting of Mattamy 'Wildflowers' subdivision
- Area of Jean Steckle PS boundary South of Huron Rd. assigned to new Seabrook Dr. school

SCENARIO 3 – PROJECTED ENROLMENT

School	Grades	Enrolment						Capacity (OTG)**
		2018	2020	2022	2024	2026	2028	
Jean Steckle PS	JK-8	838	870	895	857	815	777	715
Queen Elizabeth PS	JK-6	247	212	201	198	198	198	358
Southridge PS	JK-6	420	477	528	555	581	583	518
Laurentian PS	7-8	440	450	433	448	414	420	421
New School	JK-8*	411	455	471	499	501	494	669
Total		2356	2464	2528	2557	2509	2472	2681

*New school will open as JK-7 in 2018, adding Gr. 8 in 2019

**OTG (On-the-ground) capacity. Ministry of Education measure describing school capacity

SCENARIO 3 – PROPOSED TRANSITIONS

SOUTHRIDGE PUBLIC SCHOOL

- ‘Wildflowers’ community students to attend new school Sept. 2018
 - Option for 2018 Gr. 6 students to finish at Southridge PS (with transportation), no siblings
 - French Immersion – students may remain at Southridge PS for the French Immersion program (with siblings). Transportation will not be provided (In accordance with Board Procedure – 4260 section 15.1)

QUEEN ELIZABETH PUBLIC SCHOOL

- Wildflowers’ community students to attend new school Sept. 2018
 - Option for 2018 Gr. 6 students to finish at Queen Elizabeth PS (with transportation), no siblings

SCENARIO 3 – PROPOSED TRANSITIONS

LAURENTIAN PUBLIC SCHOOL

- ‘Wildflowers’ community students to attend new school Sept. 2018
 - 2018 Gr. 8 students to finish at Laurentian PS (with transportation), no siblings

JEAN STECKLE PUBLIC SCHOOL

- 2018 JK- 7 students within Huron Village Community to attend new school
 - 2018 Gr. 8 students within Huron Village Community to attend Jean Steckle PS
- 2019 JK- 8 students within Huron Village Community to attend new school
- 2020 (or beyond) JK- 7 students within Huron Village Community to attend new school (Tartan Ave.)
- 2021 (or beyond) JK- 8 students within Huron Village Community to attend new school (Tartan Ave.)

SCENARIO 3 – DRAFT OBJECTIVES

SCENARIO EVALUATION

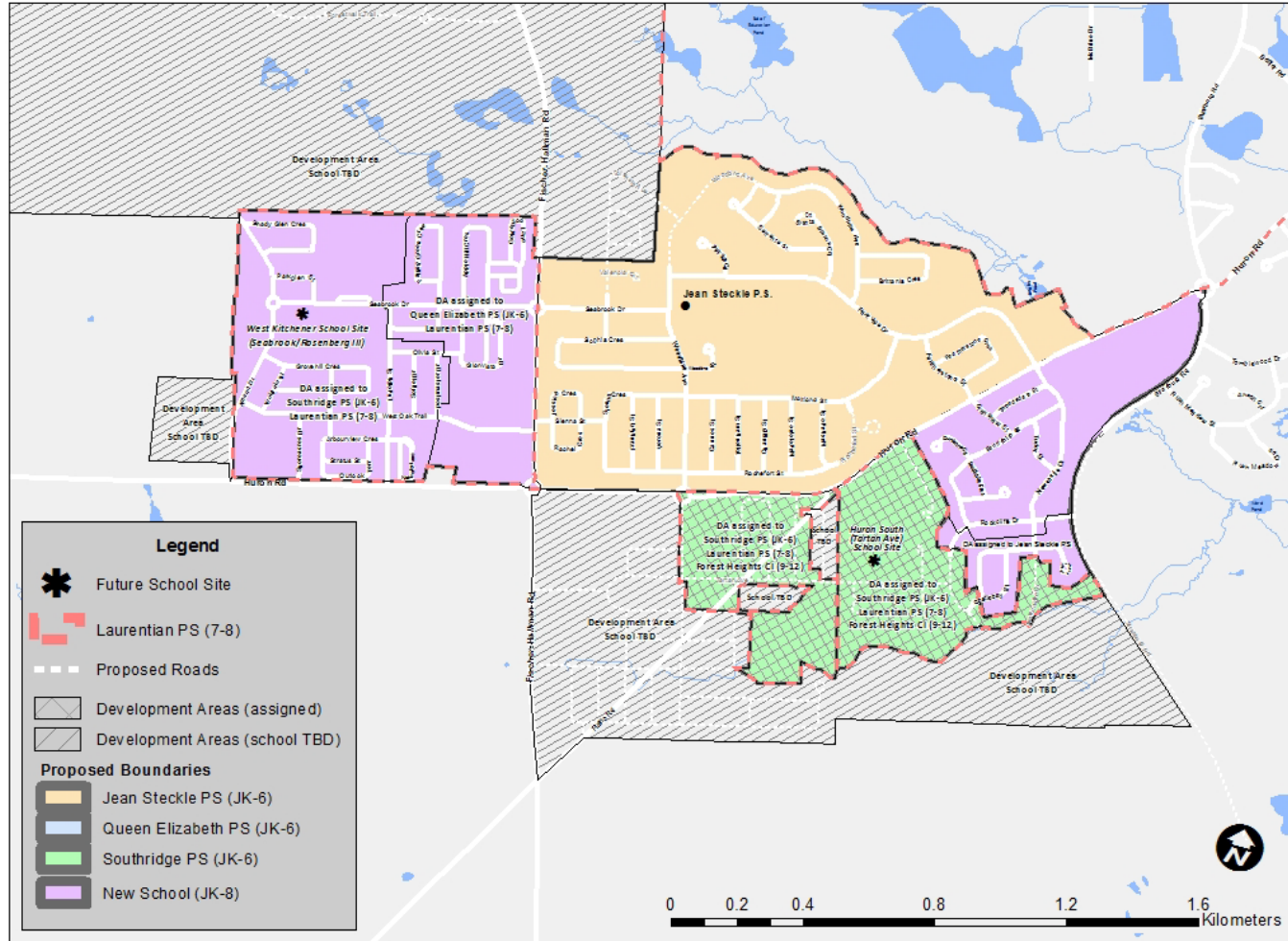
Draft Objective	Comments
Establish school attendance boundary for new Elementary school	<ul style="list-style-type: none">• Yes.
Reduce enrolment at Jean Steckle PS	<ul style="list-style-type: none">• Yes. Peak enrolment reduced at Jean Steckle PS by 139 students
Maximize the use of built permanent capacity/Minimize the need for temporary accommodation (portables)	<ul style="list-style-type: none">• Reduces portables at Jean Steckle PS.• Accommodates more students in permanent capacity than Scenario 1.
Minimize transitions where changes are proposed	<ul style="list-style-type: none">• Transitions for Queen Elizabeth, Southridge students to new school.• Transitions for Huron Village from Jean Steckle to new school (Seabrook)• Transitions for Huron Village from new school (Seabrook) to new school (Tartan).

SCENARIO 3 – SCENARIO EVALUATION

DISCUSSION WITHIN CONTEXT OF COMMUNITY FEEDBACK

Feedback	Discussion
Pedestrian Crossing @ Fischer-Hallman	<ul style="list-style-type: none">• No students moving from Jean Steckle to new Seabrook Dr. school have to cross Fischer-Hallman Rd. (all eligible for transportation by distance)
Number of transitions for Huron Woods neighbourhood	<ul style="list-style-type: none">• Many transitions for Huron Woods neighbourhood considering future opening of new Tartan Ave. school
French Immersion (F.I.) program access	<ul style="list-style-type: none">• Loss of access to ‘in-boundary’ F.I. program for current Huron Woods F.I. students at Jean Steckle• Loss of access to ‘in-boundary’ F.I. program for current ‘Wildflowers’ Southridge PS F.I. students• New Seabrook Dr. school potential to open with Gr. 1 F.I. (depending on demand)
Transitions – Impact on students	<ul style="list-style-type: none">• Only a portion of each cohort (grade) moved to new Seabrook Dr. school. Sever existing relationships cohort.• Jean Steckle and new Seabrook Dr. school JK-8, siblings at same school together for longer.
Transitions impact on existing caregiver relationships	

SCENARIO 4 - DESCRIPTION



- New boundary created for 335 Seabrook Dr. school consisting of Mattamy 'Wildflowers' subdivision
- Grade 7, 8 phased out of Jean Steckle PS to be accommodated at new Seabrook Dr. school, phased back in when enrolment pressure allows
- Area of Jean Steckle PS boundary South of Huron Rd. (Huron Village) assigned to New School

SCENARIO 4 – PROJECTED ENROLMENT

School	Grades	Enrolment						Capacity (OTG)**
		2018	2020	2022	2024	2026	2028	
Jean Steckle PS	JK-6	779	725	708	668	638	606	715
Queen Elizabeth PS	JK-6	247	212	201	198	198	198	358
Southridge PS	JK-6	420	477	528	555	581	583	518
Laurentian PS	7-8	440	451	433	448	414	420	421
New School	JK-8*	436	599	658	687	677	666	669
Total		2322	2464	2528	2556	2508	2473	2681

*New school will open as JK-7 in 2018, adding Gr. 8 in 2019

**OTG (On-the-ground) capacity. Ministry of Education measure describing school capacity

SCENARIO 4 – PROPOSED TRANSITIONS

SOUTHRIDGE PUBLIC SCHOOL

- ‘Wildflowers’ community students to attend new school Sept. 2018
 - Option for 2018 Gr. 6 students to finish at Southridge PS (with transportation), no siblings
 - French Immersion – students may remain at Southridge PS for the French Immersion program (with siblings). Transportation will not be provided (In accordance with Board Procedure – 4260 section 15.1)

QUEEN ELIZABETH PUBLIC SCHOOL

- Wildflowers’ community students to attend new school Sept. 2018
 - Option for 2018 Gr. 6 students to finish at Queen Elizabeth PS (with transportation), no siblings

SCENARIO 4 – PROPOSED TRANSITIONS

LAURENTIAN PUBLIC SCHOOL

- ‘Wildflowers’ community students to attend new school Sept. 2018
 - 2018 Gr. 8 students to finish at Laurentian PS (with transportation), no siblings

JEAN STECKLE PUBLIC SCHOOL

- 2018 Gr. 7 students to attend new school (Jean Steckle PS JK-6, 8)
- 2019 Gr. 7 and Gr. 8 students to attend new school (Jean Steckle PS JK-6)
 - Transportation provided in accordance with Board Policy 4009 (if eligible by distance)

SCENARIO 4 – PROPOSED TRANSITIONS

JEAN STECKLE PUBLIC SCHOOL CONTINUED

- 2018 JK- 7 students within Huron Village Community to attend new school
 - 2018 Gr. 8 students within Huron Village Community to attend Jean Steckle PS
- 2019 JK- 8 students within Huron Village Community to attend new school
- 2020 (or beyond) JK- 7 students within Huron Village Community to attend new school (Tartan Ave.)
- 2021 (or beyond) JK- 8 students within Huron Village Community to attend new school (Tartan Ave.)

SCENARIO 4 – DRAFT OBJECTIVES

SCENARIO EVALUATION

Draft Objective	Comments
Establish school attendance boundary for new Elementary school	<ul style="list-style-type: none">• Yes.
Reduce enrolment at Jean Steckle PS	<ul style="list-style-type: none">• Reduces peak enrolment at Jean Steckle PS by 255 students
Maximize the use of built permanent capacity/Minimize the need for temporary accommodation (portables)	<ul style="list-style-type: none">• Reduces most portables at Jean Steckle PS.• Leaves least surplus permanent capacity at new school than other options.

SCENARIO 4 – DRAFT OBJECTIVES

SCENARIO EVALUATION CONTINUED

Draft Objective	Comments
Minimize transitions where changes are proposed	<ul style="list-style-type: none">• Transitions for Queen Elizabeth, Southridge students to new school.• Students ‘graduate’ into new school from Jean Steckle when changing to JK-6 organization.• Students ‘graduate’ back to Jean Steckle when Gr. 7, 8 returned.• Transitions for ‘S of Huron Rd.’ from Jean Steckle to new school (Seabrook)• Transitions for ‘S of Huron Rd.’ from new school (Seabrook) to new school (Tartan).
Other	<ul style="list-style-type: none">• Program challenges – FI grade disconnect at new facility. Staff and resources.

SCENARIO 4 – SCENARIO EVALUATION

DISCUSSION WITHIN CONTEXT OF COMMUNITY FEEDBACK

Feedback	Discussion
Pedestrian Crossing @ Fischer-Hallman	<ul style="list-style-type: none">Some students ineligible for transportation (<1600m from new school) expected to cross. 30 for Sept. 2018, increasing to 90 by 2021
Number of transitions for Huron Woods neighbourhood	<ul style="list-style-type: none">Transition to new Seabrook School (Gr. 6 to 7). Somewhat mitigated in that moving entire grade cohorts (Grade 7 and then 8).Many transitions for Huron Woods neighbourhood (JK-6) considering future opening of new Tartan Ave. school
French Immersion (F.I.) program access	<ul style="list-style-type: none">Loss of access to 'in-boundary' F.I. program for current Huron Woods (JK-6) F.I. students at Jean Steckle (Gr. 7,8 still 'in-boundary')Loss of access to 'in-boundary' F.I. program for current 'Wildflowers' Southridge PS F.I. studentsNew Seabrook Dr. School potential to open with Gr. 1 F.I. (depending on demand)
Transitions – Impact on students	<ul style="list-style-type: none">Only a portion of each cohort (grade) moved to new Seabrook Dr. school. Sever existing relationships within cohort (JK-6).Students may be separated from younger siblings earlier than if Jean Steckle remained JK-8 (would have separated for high school regardless)
Transitions impact on existing caregiver relationships	

IMPORTANT DATES

- Working Group # 5: November 21, 2017, 3:30-5:00 pm, Jean Steckle PS library
- Public Meeting #2: November 21, 2017, 7:00-8:30 pm, Jean Steckle PS Gymnasium

CONTACT INFORMATION

- Website: www.wrdsb.ca
(About>Planning>Boundary Studies>Fischer-Hallman/Huron Boundary Study)
- E-mail: boundaryfeedback@wrdsb.ca
- Phone: 519-570-0003 ext. 4419



INNOVATING TOMORROW BY EDUCATING TODAY

51 Ardelt Avenue
Kitchener, ON N2C 2R5
tel: 519.570.0003
WEB: WRDSB.CA

