



Waterloo Region
District School Board

Fischer-Hallman/Huron Elementary Schools Boundary Study

Working Group Meeting #1

September 26, 2017



Agenda

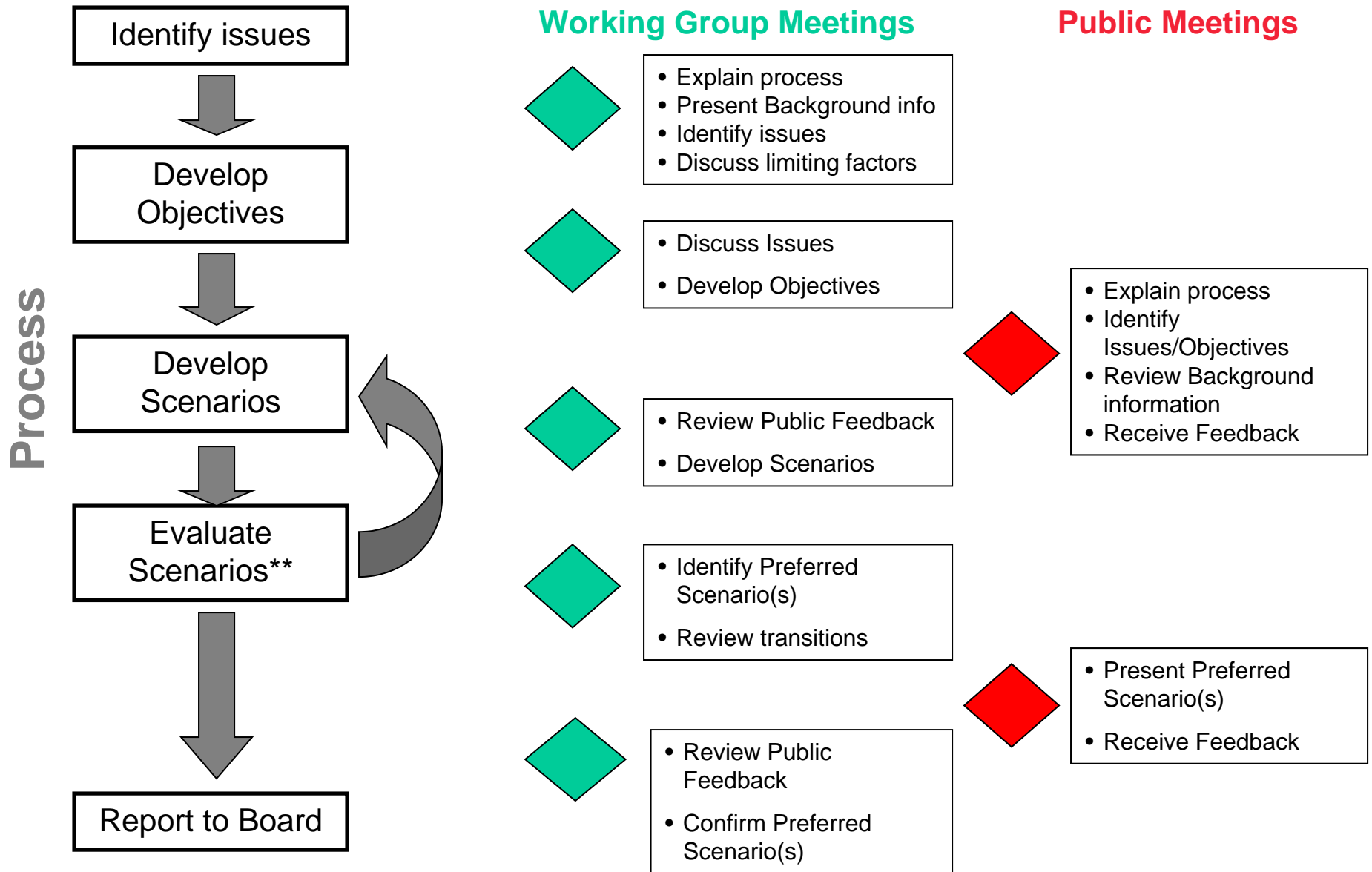
1. Welcome/Introductions
2. Explanation of Boundary Study Process
 1. Working Group Meetings/Role
 2. Setting Objectives
 3. Scenario Development
 4. Public Meetings
3. Study Purpose and Issues Identification
4. Development Activity Summary
5. Draft Goals/Objectives
6. Initial Scenario Development
7. Meeting Schedule and Location(s)/Important Dates
8. Roundtable

What is a Boundary Study?

The WRDSB considers a School Boundary Study when considering a change to one or more school attendance areas. There can be a number of reasons for a study:

- Changing the grade structure of an elementary school – this would include changing an elementary school from a JK-6 format to a composite school with JK-8;
- Balancing enrolment and facilities – one school may have too many students for its capacity and another may have too few;
- After municipalities approve new residential development, the area needs to be assigned to a school where capacity exists;
- Opening of a new school and establishing the new boundary and adjusting boundaries of the existing schools in the area

Boundary Study Process



**Scenario development and evaluation may go through multiple iterations as scenarios are evaluated , and new ideas result from the evaluation.

What is role of the Working Group members ?

The Working Group will:

- Identify and discuss issues and opportunities of the individual school communities and the broader community
- Set study objectives
- Develop boundary options (scenarios)
- Evaluate boundary options against study objectives
- Act as a liaison between the Working Group and the school communities

Working Group Membership

The Working Group consists of:

- Up to 2 parents from each school
- The Principal from each school
- Planning Staff
- The school area superintendent(s)

Purpose and Issues

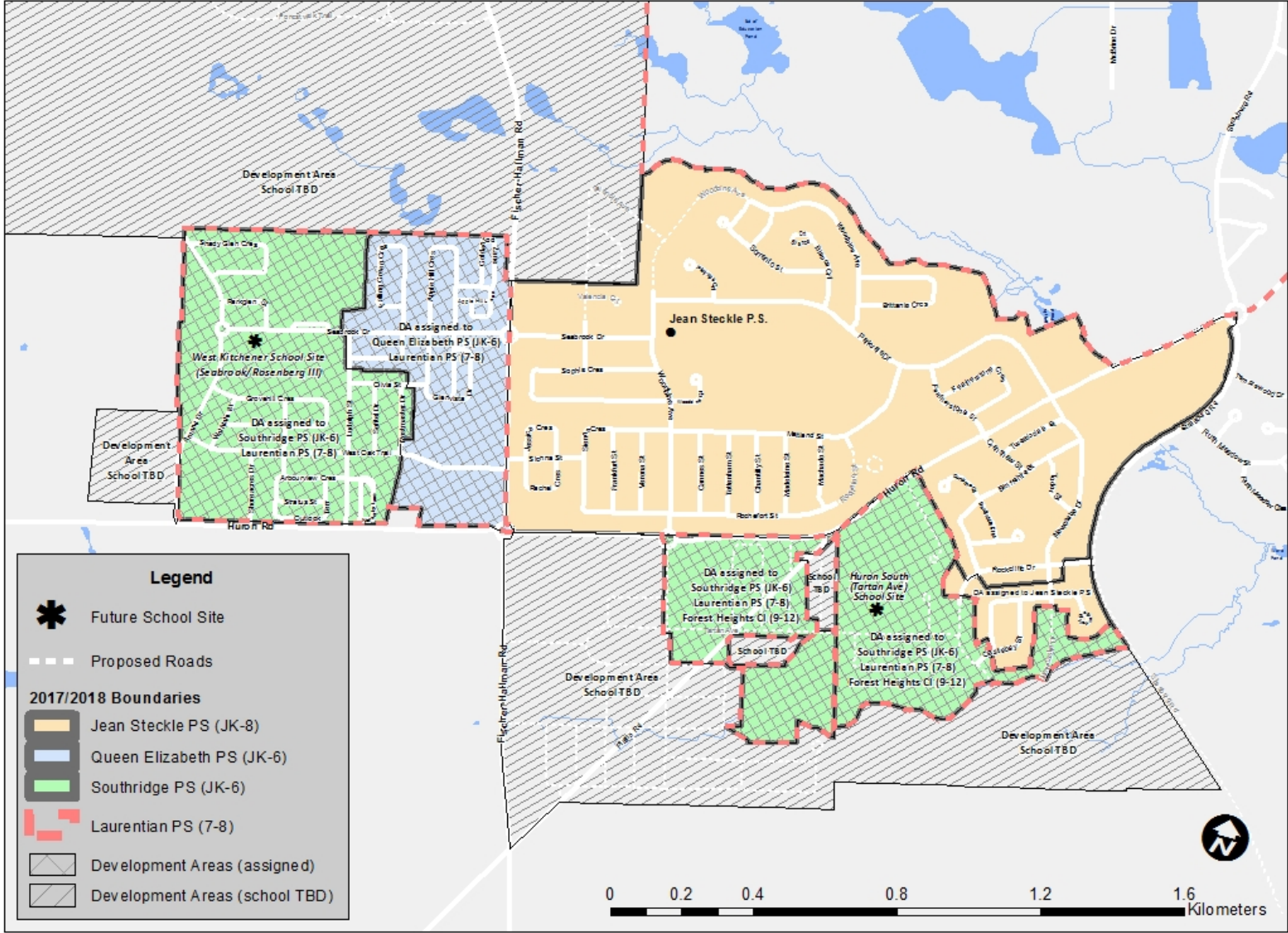
To establish a school attendance area boundary for the new Seabrook Dr. school in Southwest Kitchener

The issues to be examined in this area include:

- Enrolment Pressure at Jean Steckle PS
- Transition planning

Study Area

Fischer-Hallman/Huron Boundary Study Area



Historic & Current Enrolment/Capacity

School	Grades	Enrolment						Capacity (OTG)**
		2012	2013*	2014	2015	2016	2017	
Jean Steckle PS	JK-8	-	531	722	819	886	912	669
Queen Elizabeth PS	JK-6	247	250	273	258	280	308	358
Southridge PS	JK-6	443	420	399	424	458	548	518
Laurentian PS	7-8	464	446	420	388	409	440	421
Total		1154	1647	1814	1889	2033	2208	1966

*Jean Steckle PS opened 2013 JK-7, adding Gr. 8 the following year

**OTG (On-the-ground) capacity. Ministry of Education measure describing school capacity

Since 2014, enrolment at Study Area schools has increased by 21%

Projected Enrolment – Status Quo

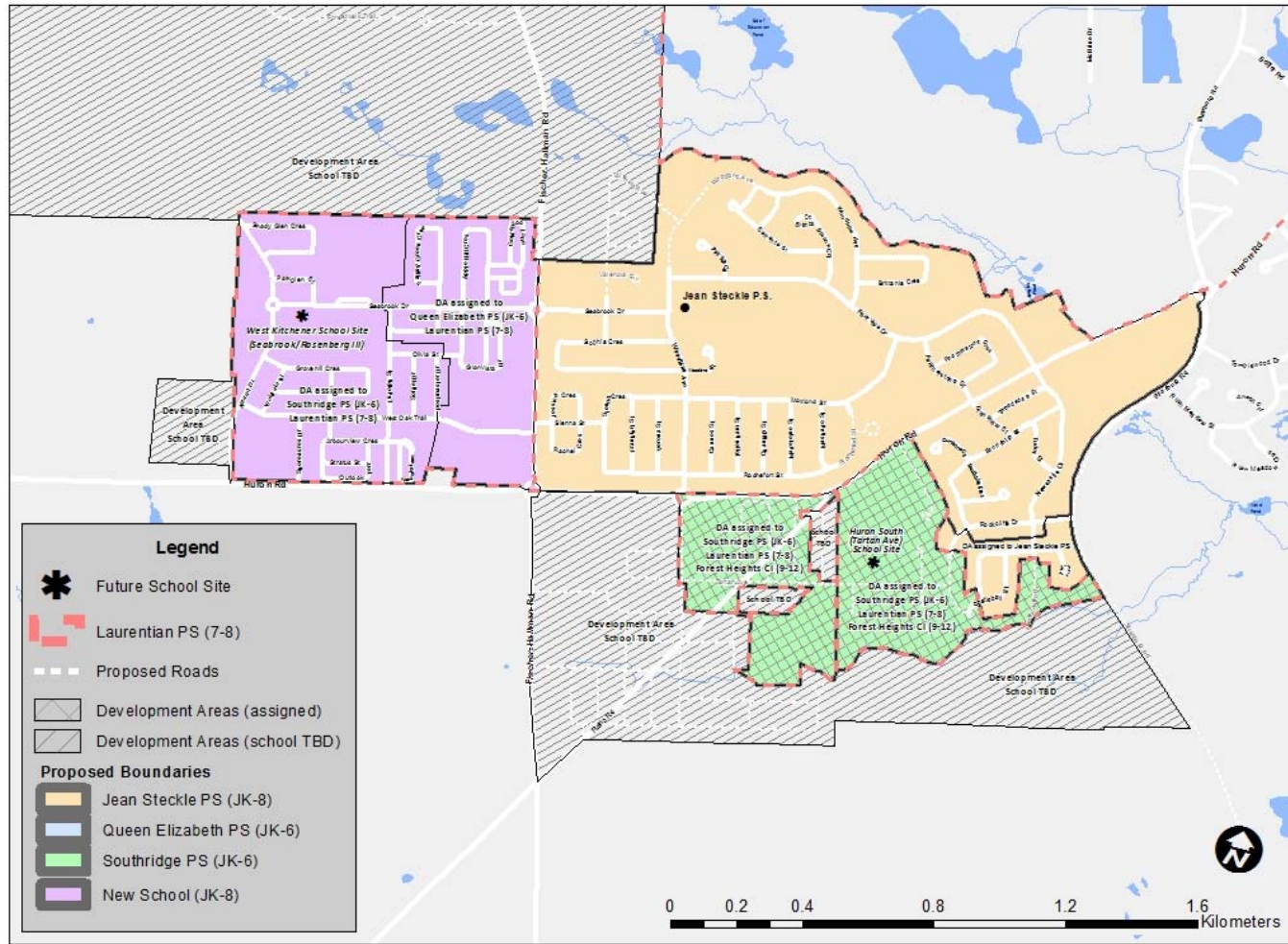
School	Grades	Enrolment						Capacity (OTG)**
		2018	2020	2022	2024	2026	2028	
Jean Steckle PS	JK-8	935	1016	1034	998	954	912	669
Queen Elizabeth PS	JK-6	304	278	271	271	270	269	358
Southridge PS	JK-6	592	674	738	773	796	795	518
Laurentian PS	7-8	466	496	486	514	486	493	421
Total		2297	2464	2529	2556	2506	2469	1966

**OTG (On-the-ground) capacity. Ministry of Education measure describing school capacity

Fischer-Hallman/Huron Boundary Study Area - Scenario 1

Scenario 1

- New boundary created for Seabrook Dr. school consisting of Mattamy 'Wildflowers' subdivision



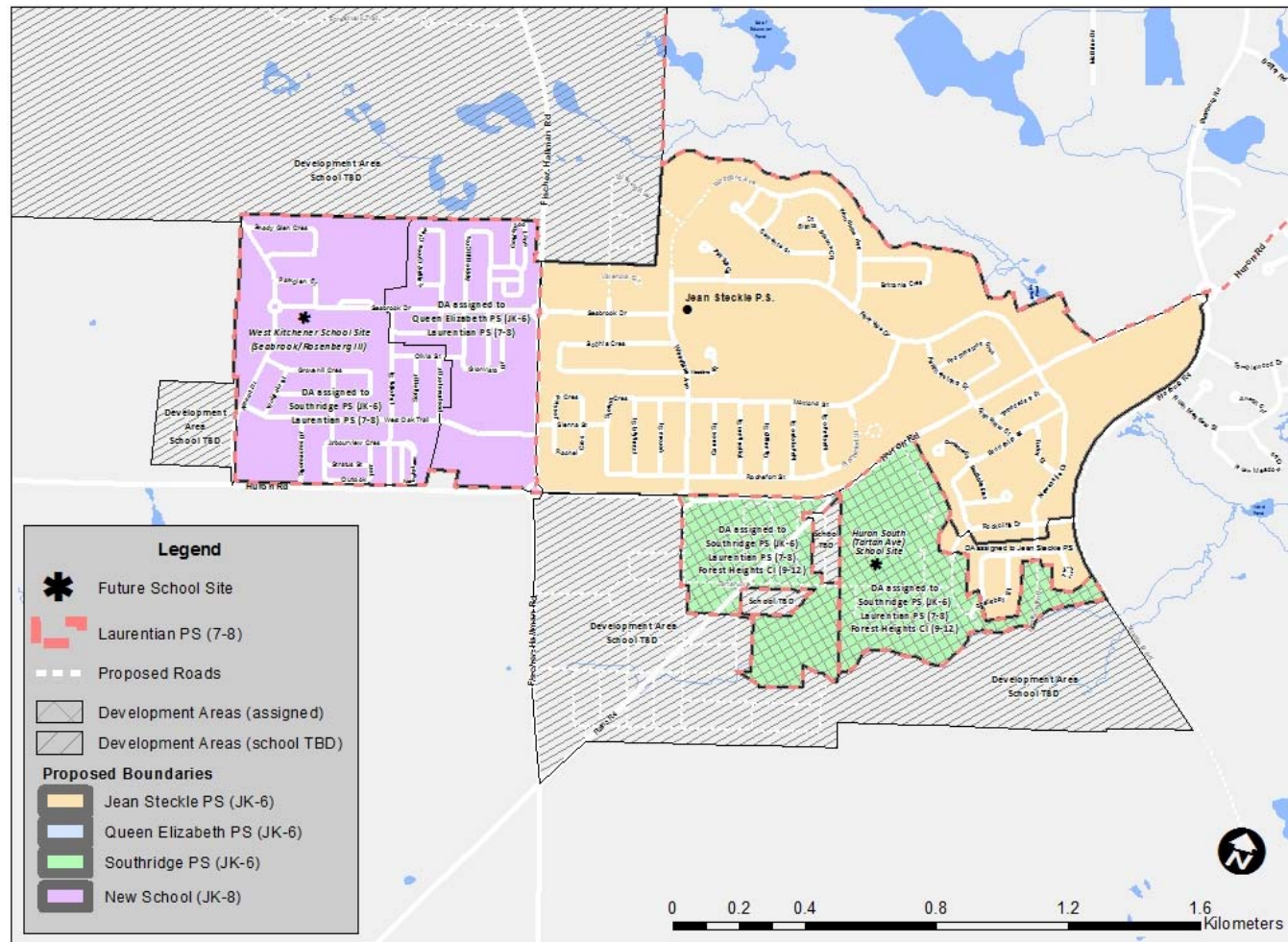
Projected Enrolment – Scenario 1

School	Grades	Enrolment						Capacity (OTG)**
		2018	2020	2022	2024	2026	2028	
Jean Steckle PS	JK-8	935	1016	1034	998	954	912	669
Queen Elizabeth PS	JK-6	247	212	201	198	198	198	358
Southridge PS	JK-6	420	477	528	555	581	583	518
Laurentian PS	7-8	440	451	433	448	414	420	421
New School	JK-8*	279	308	333	356	359	355	669
Total		2321	2464	2529	2555	2506	2468	2635

*New school will open as JK-7 in 2018, adding Gr. 8 in 2019

**OTG (On-the-ground) capacity. Ministry of Education measure describing school capacity

Fischer-Hallman/Huron Boundary Study Area - Scenario 2



Scenario 2

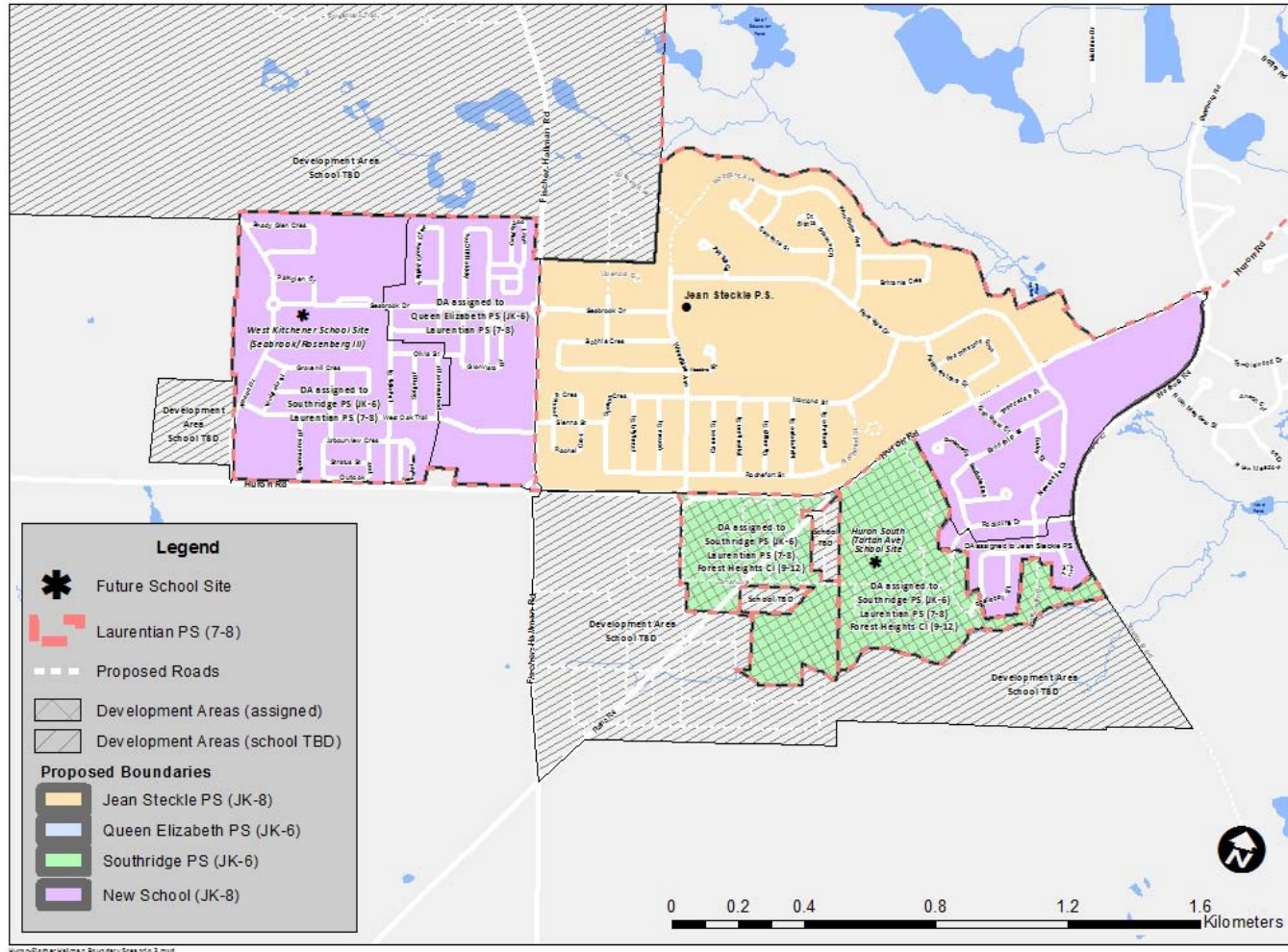
- New boundary established for Seabrook Dr. school consisting of Mattamy 'Wildflowers' subdivision
- Grade 7, 8 phased out of Jean Steckle PS to be accommodated at new Seabrook Dr. school, phased back in when enrolment pressure allows

Projected Enrolment – Scenario 2

School	Grades	Enrolment						Capacity (OTG)**
		2018	2020	2022	2024	2026	2028	
Jean Steckle PS	JK-8	863	840	829	788	760	727	669
Queen Elizabeth PS	JK-6	247	212	201	198	198	198	358
Southridge PS	JK-6	420	477	528	555	581	583	518
Laurentian PS	7-8	440	451	433	448	415	420	421
New School	JK-8*	350	489	549	578	569	559	669
Total		2320	2469	2540	2567	2523	2487	2635

*New school will open as JK-7 in 2018, adding Gr. 8 in 2019

**OTG (On-the-ground) capacity. Ministry of Education measure describing school capacity



Scenario 3

- New boundary established for Seabrook Dr. school consisting of Mattamy 'Wildflowers' subdivision
- Area of Jean Steckle PS boundary South of Huron Rd. assigned to New School

Projected Enrolment – Scenario 3

School	Grades	Enrolment						Capacity (OTG)**
		2018	2020	2022	2024	2026	2028	
Jean Steckle PS	JK-6	838	870	895	857	815	777	669
Queen Elizabeth PS	JK-6	247	212	201	198	198	198	358
Southridge PS	JK-6	420	477	528	555	581	583	518
Laurentian PS	7-8	450	450	433	448	414	420	421
New School	JK-8*	411	455	471	499	501	494	669
Total		2366	2464	2528	2557	2509	2472	2635

*New school will open as JK-7 in 2018, adding Gr. 8 in 2019

**OTG (On-the-ground) capacity. Ministry of Education measure describing school capacity

Proposed Boundary Study Timeline

2017

2018



Note: No boundary changes would be implemented prior to September 2018

Important Dates

- Working Group # 2: October 10, 2017, 3:30-5:00 pm, Jean Steckle PS library
- Public Meeting #1: (Late October)
- Working Group #3:
- Working Group #4:
- Working Group #5:
- Public Meeting #2: (Late November)
- Staff Report and recommendations to Board (December 11 – Tentative)

Next Steps

- Confirm objectives
- Refine boundary scenarios based on objectives
- Evaluate scenarios against objectives
- Public/Community meetings

Contact Information

- Website: www.wrdsb.ca
 - » About>Planning>Boundary Studies
 - » Fischer-Hallman/Huron Boundary Study (Elementary)
- E-mail: boundaryfeedback@wrdsb.ca
- Phone: 519-570-0003 ext. 4419