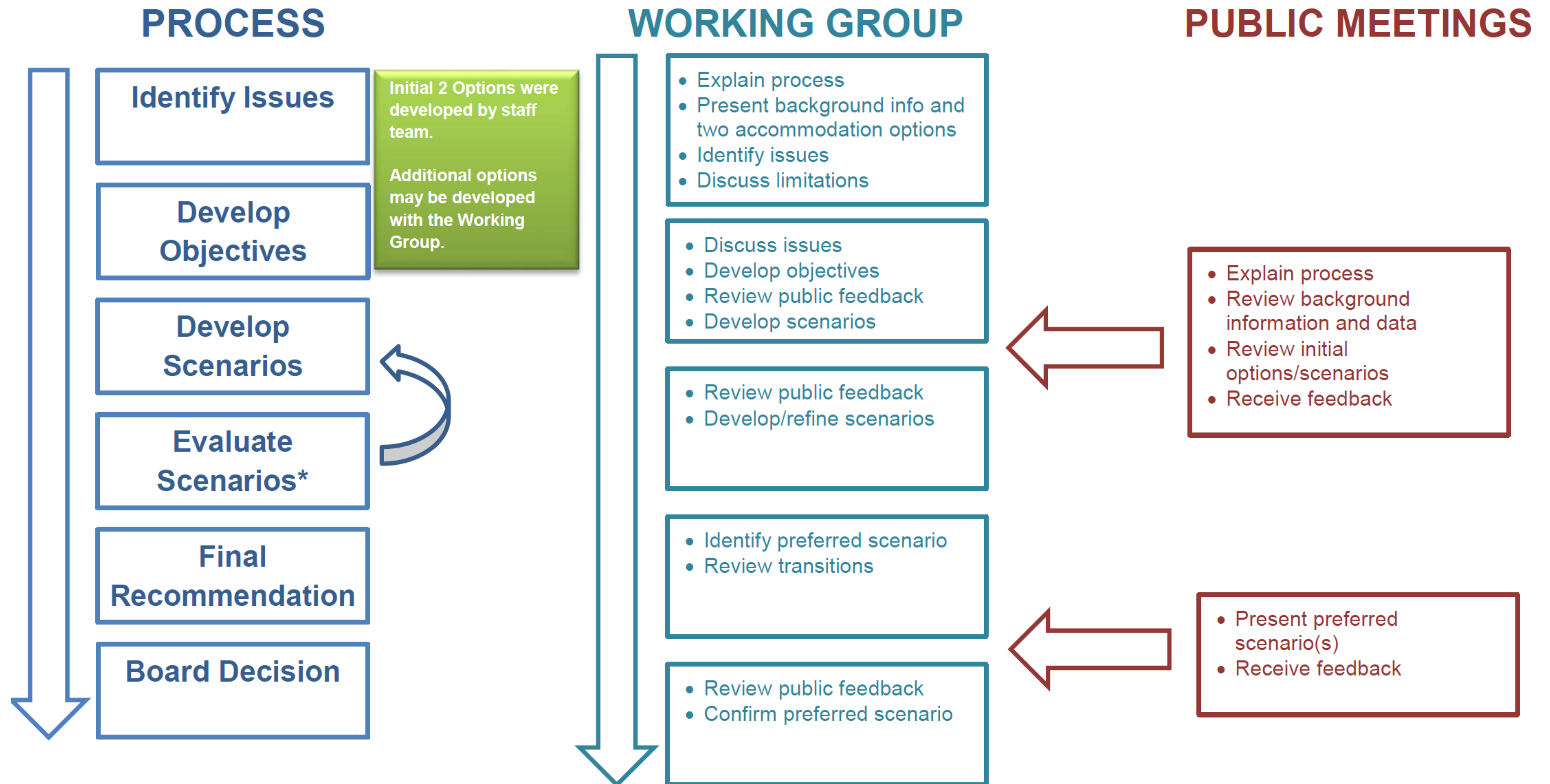


BOUNDARY STUDY PROCESS



*Scenario development and evaluation may go through multiple iterations as scenarios are reviewed and new ideas are shared

2017 Long-Term Accommodation Plan

Southwest Kitchener and Kitchener Central-East

REVIEW AREA S02 - KITCHENER SOUTHWEST

REVIEW AREA SCHOOLS	REGULAR TRACK	FRENCH IMMERSION	ON-THE-GROUND CAPACITY (OTG)	SITE SIZE (AC)	YEAR OF CONSTRUCTION	FACILITY CONDITION INDEX (FCI)	FCI ASSESSMENT YEAR
Forest Heights CI	9-12	9-12	1278	24.94	1964	22%	2012
Huron Heights SS	9-12		1245	18.77	2006	0%	2015

Short-Term Recommendations (Years 1-5)

An interim solution is required to address immediate overcrowding pressures at Huron Heights SS. A boundary study is needed and a Pupil Accommodation Review for Kitchener Secondary Schools is also being considered. The proposed new Southwest Kitchener Secondary School was submitted as Priority #1 in the 2017 Capital Priorities funding program.

Medium-Term Recommendations (Years 6-10)

Medium-term solutions are pending the outcome of the Secondary Pupil Accommodation Review (PAR) if undertaken along with S03 schools.

REVIEW AREA S03 - KITCHENER CENTRAL-EAST

REVIEW AREA SCHOOLS	REGULAR TRACK	FRENCH IMMERSION	ON-THE-GROUND CAPACITY (OTG)	SITE SIZE (AC)	YEAR OF CONSTRUCTION	FACILITY CONDITION INDEX (FCI)	FCI ASSESSMENT YEAR
Cameron Heights CI	9-12		1605	7.57	1969	36%	2012

Short-Term Recommendations (Years 1-5)

A Pupil Accommodation Review for Kitchener Secondary Schools is being considered (See S02).

Medium-Term Recommendations (Years 6-10)

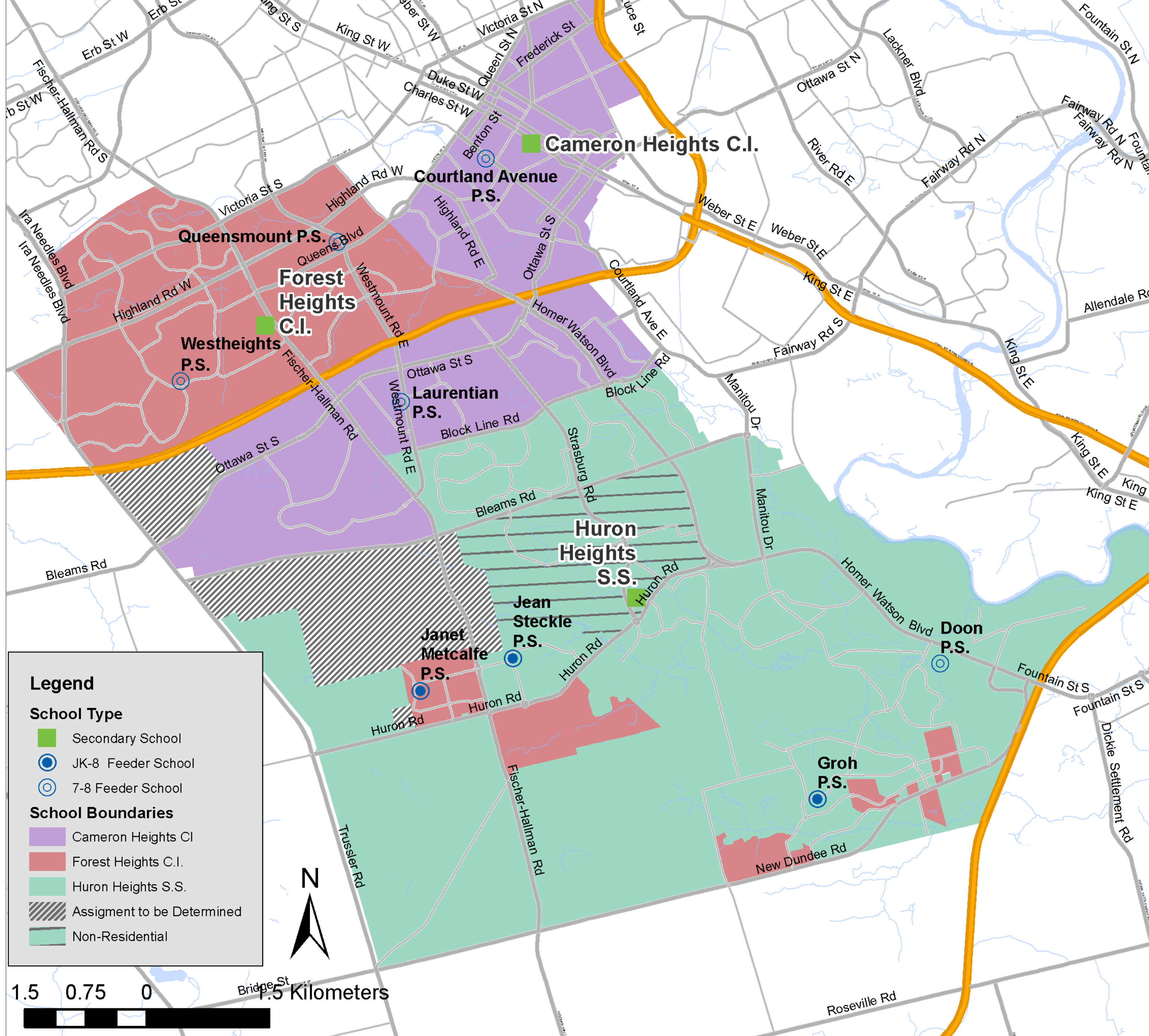
Long-term solutions are pending the outcome of the Secondary Pupil Accommodation Review (PAR), if undertaken with S02 schools.

Status of the Proposed new Southwest Kitchener Secondary School

- Funding approval was not granted in the 2017 round of Capital Priorities funding program
- Fischer-Hallman site was declared surplus in 2017
- The board is working with the City of Kitchener to identify a site
- The timeline is anywhere from 5 to 10 years to obtain all approvals



Southwest Kitchener Secondary Boundary Study – Status Quo



Description:

Status Quo/No Change – Current boundaries and enrolment situation

- Huron Heights Secondary School’s utilization is nearly 125% in 2018
- A number of operational changes have been made to accommodate the current enrolment (1522) at Huron Heights
 - Six Period Day (double lunch)
 - Doon South, Huron South and Mattamy Wildflowers Development Areas assigned to Forest Heights CI
 - Placement of two additional portables for new total of 12

Implications:

- Continued enrolment imbalance in the study area utilizations up to 165% at Huron Heights SS
- Could exceed maximum allowable portable classrooms at Huron Heights SS
- Available school capacity and site space for portables at Forest Heights CI
- Specialty rooms (e.g. Science Labs and Gymnasiums) fully utilized at Huron Heights SS
- Specialty Rooms are available at Forest Heights and Cameron Heights CI

STATUS QUO (NO CHANGE) ENROLMENT PROJECTIONS

School	Grades	2018 OTG Plus Portable Capacity			Enrolment (ADE)/ Utilization (%)**					
		OTG	Port Cap*	Total Cap (OTG+Ports)	2018	2020	2022	2024	2026	2028
CHCI	9-12	1596	6	1722	1778	1760	1735	1756	1707	1672
					111%	110%	109%	110%	107%	105%
FHCI	9-12	1272	12	1524	1046	1115	1221	1348	1362	1355
					82%	88%	96%	106%	107%	107%
HHSS	9-12	1224	18	1602	1522	1814	1909	1957	2002	2023
					124%	148%	156%	160%	164%	165%

*Portable capacities are based on the current site conditions. In some cases, things like electrical upgrades may increase the amount of portables that can be accommodated at a given site. Portable capacities are provided for information purposes only and are subject to change.

**Utilization calculated using On-the-Ground (G) Capacity



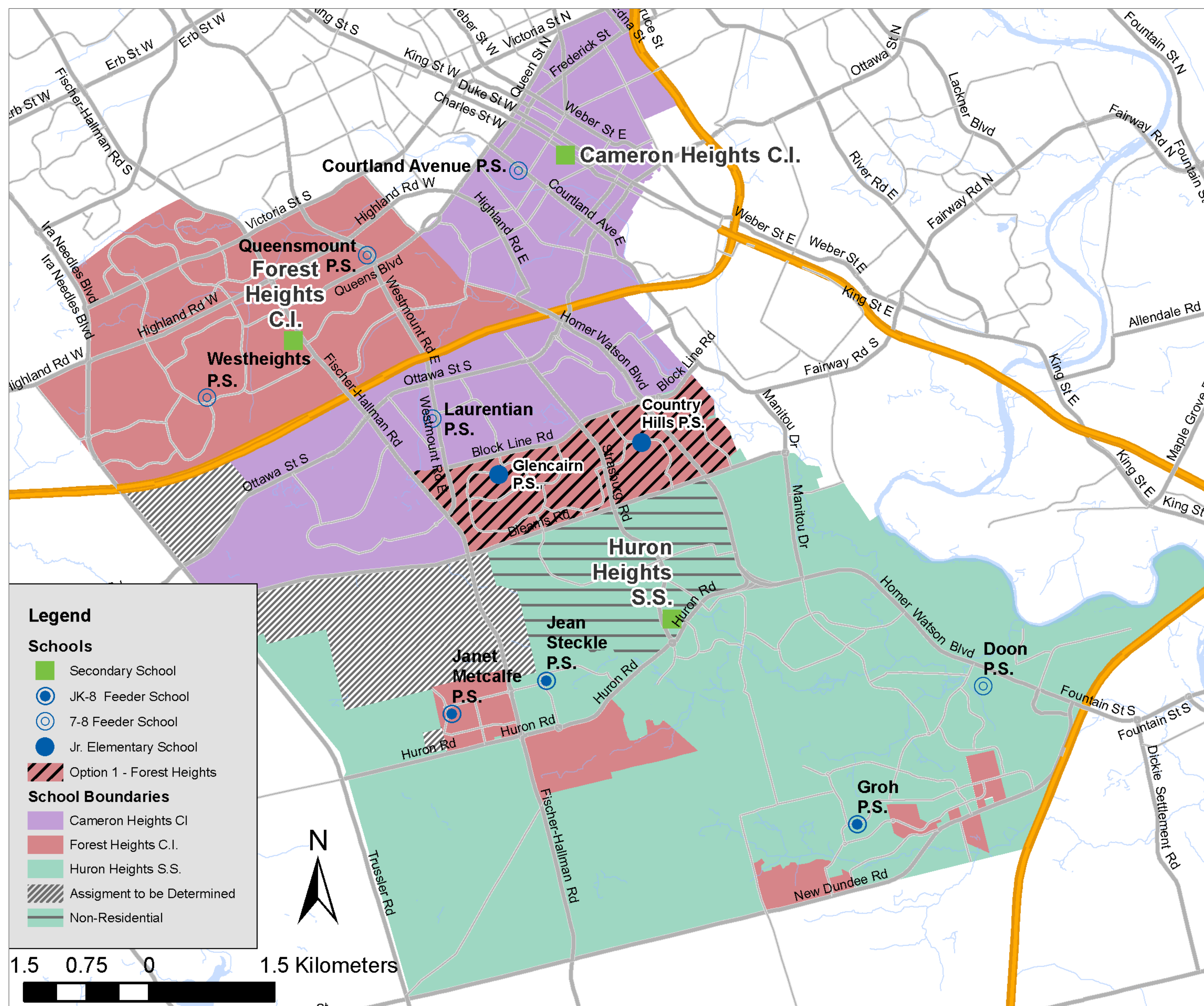
Southwest Kitchener Secondary Boundary Study - Scenario 1

Description:

Reassign Country Hills PS and Glencairn PS area from Huron Heights SS to Forest Heights CI

Implications:

- Majority of Glencairn and Country Hills not within walking distance of Forest Heights
- Five additional regular school buses required at cost of **\$210K per year**
- Infrastructure upgrades may be required to accommodate extra buses at Forest Heights
- Eliminates a split feed at Laurentian PS



SCENARIO 1 ENROLMENT PROJECTIONS

Scenario 1 - Reassign Country Hills and Glencairn to Forest Heights

School	Grade s	2018 OTG Plus Portable Capacity			Enrolment (ADE)/ Utilization (%)**					
		OTG	Port Cap*	Total Cap (OTG+Ports)	2018	2020	2022	2024	2026	2028
CHCI	9-12	1596	6	1722	1778	1760	1735	1756	1707	1672
					111%	110%	109%	110%	107%	105%
FHCI	9-12	1272	12	1524	1046	1455	1634	1768	1768	1760
					82%	114%	128%	138%	138%	138%
HHSS	9-12	1224	18	1602	1522	1481	1497	1525	1584	1611
					124%	121%	122%	125%	129%	132%

*Portable capacities are based on the current site conditions. In some cases, things like electrical upgrades may increase the amount of portables that can be accommodated at a given site. Portable capacities are provided for information purposes only and are subject to change.

**Utilization calculated using On-the-Ground (OTG) Capacity



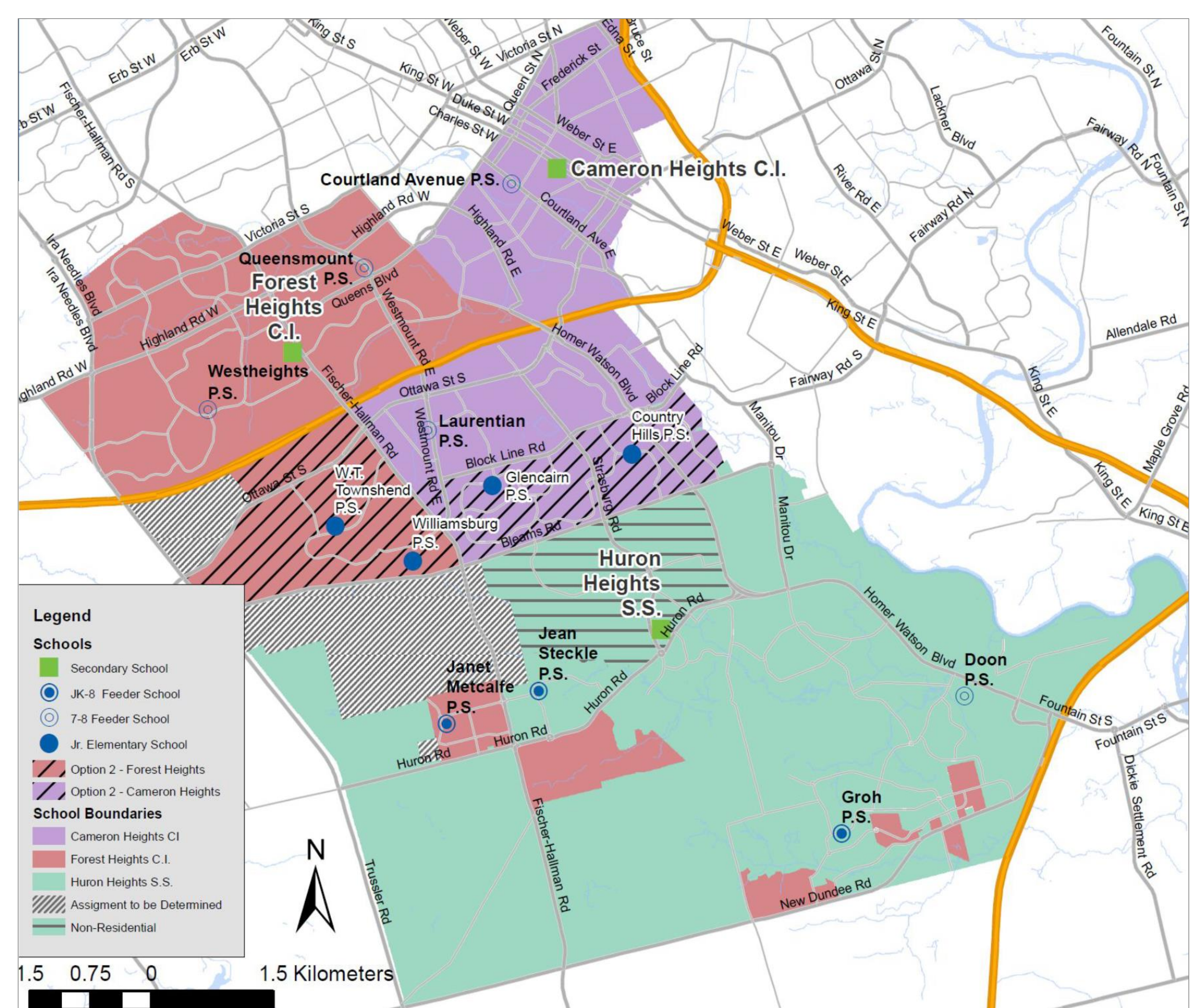
Southwest Kitchener Secondary Boundary Study - Scenario 2

Description:

Reassign Country Hills PS and Glencairn PS area from Huron Heights SS to Cameron Heights CI. Reassign Williamsburg PS and Townshend PS areas from Cameron Heights CI to Forest Heights CI

Implications:

- No increase in transportation costs
- Bussing of Glencairn and Country Hills students to Cameron Heights CI offset by WT Townshend and Williamsburg students walking to Forest Heights CI
- Eliminates a split feed at Queensmount PS (Huron Heights feed removed)



SCENARIO 2 ENROLMENT PROJECTIONS

Scenario 2 - Reassign Williamsburg and Townshend areas to Forest Heights and Country Hills/Glencairn areas to Cameron Heights

School	Grades	2018 OTG Plus Portable Capacity			Enrolment (ADE)/ Utilization (%)**					
		OTG	Port Cap*	Total Cap (OTG+Ports)	2018	2020	2022	2024	2026	2028
CHCI	9-12	1596	6	1722	1778	1634	1688	1747	1714	1715
					111%	102%	106%	109%	107%	107%
FHCI	9-12	1272	12	1524	1046	1579	1685	1777	1761	1715
					82%	124%	132%	140%	138%	134%
HHSS	9-12	1224	18	1602	1522	1481	1497	1525	1584	1611
					124%	121%	122%	125%	129%	132%

*Portable capacities are based on the current site conditions. In some cases, things like electrical upgrades may increase the amount of portables that can be accommodated at a given site. Portable capacities are provided for information purposes only and are subject to change.

**Utilization calculated using On-the-Ground (OTG) Capacity

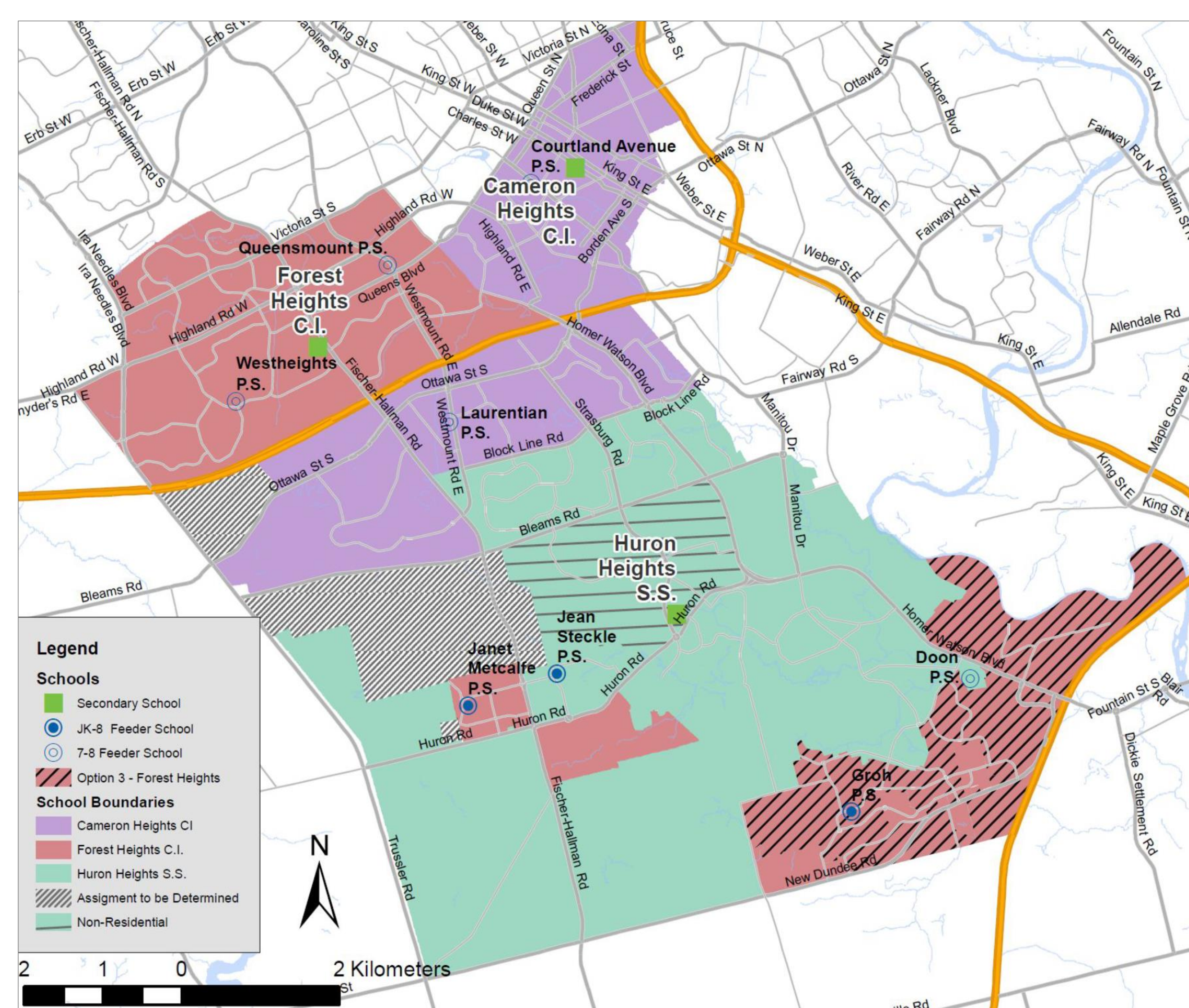
Southwest Kitchener Secondary Boundary Study - Scenario 3

Description:

Reassign Groh PS and Brigadoon East areas from Huron Heights SS to Forest Heights CI

Implications:

- All students would be transported to Forest Heights (currently transported to Huron Heights)
- Due to routing and bell times, not many efficiencies found and five additional regular school buses required at cost of **\$210K per year**
- Infrastructure upgrades may be required to accommodate extra buses at Forest Heights
- Doon PS continues to be split between HHSS and FHCI (no reduction)
- Groh PS community shares a common secondary school boundary with new development in Development Areas (DA)
- Forest Heights CI offers Extended French (Groh PS and Doon PS offer French Immersion)



SCENARIO 3 ENROLMENT PROJECTIONS

Scenario 3 - Reassign Groh and Brigadoon East Areas to Forest Heights

School	Grades	2018 OTG Plus Portable Capacity			Enrolment (ADE)/ Utilization (%)**					
		OTG	Port Cap*	Total Cap (OTG+Ports)	2018	2020	2022	2024	2026	2028
CHCI	9-12	1596	6	1722	1778	1760	1735	1756	1707	1672
					111%	110%	109%	110%	107%	105%
FHCI	9-12	1272	12	1524	1046	1456	1630	1787	1798	1808
					82%	118%	132%	145%	146%	147%
HHSS	9-12	1224	18	1602	1522	1462	1478	1488	1533	1532
					124%	119%	121%	122%	125%	125%

*Portable capacities are based on the current site conditions. In some cases, things like electrical upgrades may increase the amount of portables that can be accommodated at a given site. Portable capacities are provided for information purposes only and are subject to change.

**Utilization calculated using On-the-Ground (OTG) Capacity

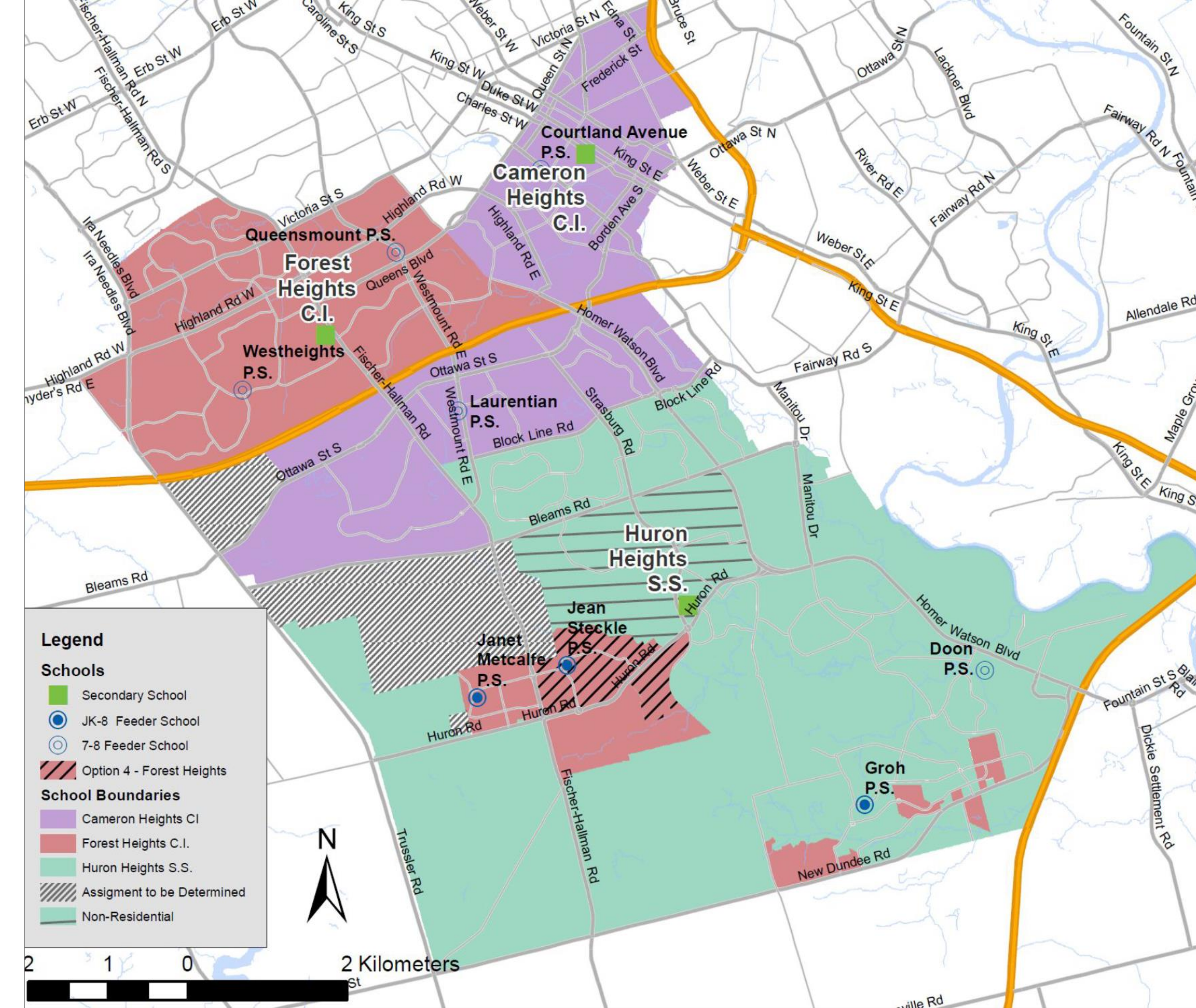
Southwest Kitchener Secondary Boundary Study - Scenario 4

Description:

Reassign Jean Steckle PS and Huron Woods areas from Huron Heights SS to Forest Heights CI

Implications:

- All students would be transported to Forest Heights (currently within walking distance of Huron Heights)
- Five additional regular school buses required at cost of **\$210K per year**
- Infrastructure upgrades may be required to accommodate extra buses at Forest Heights
- Janet Metcalfe PS split feed eliminated if all students directed to FHCI
- Shared boundary for new development in Development Areas (Mattamy Wildflowers DA) and Jean Steckle PS area.
- Forest Heights CI offers Extended French (Jean Steckle PS offer French Immersion)



SCENARIO 4 ENROLMENT PROJECTIONS

Scenario 4 - Reassign Jean Steckle and Huron Woods Area to Forest Heights

School	Grades	2018 OTG Plus Portable Capacity			Enrolment (ADE)/ Utilization (%)**					
		OTG	Port Cap*	Total Cap (OTG+Ports)	2018	2020	2022	2024	2026	2028
CHCI	9-12	1596	6	1722	1778	1760	1735	1756	1707	1672
					111%	110%	109%	110%	107%	105%
FHCI	9-12	1272	12	1524	1046	1487	1569	1696	1735	1742
					82%	117%	123%	133%	136%	137%
HHSS	9-12	1224	18	1602	1522	1436	1558	1588	1593	1594
					124%	117%	127%	130%	130%	130%

*Portable capacities are based on the current site conditions. In some cases, things like electrical upgrades may increase the amount of portables that can be accommodated at a given site. Portable capacities are provided for information purposes only and are subject to change.

**Utilization calculated using On-the-Ground (OTG) Capacity



Scenario 1 Feedback

What do you like about Scn #1?

What do you dislike about Scn #1?

Scenario 2 Feedback

What do you like about Scn #2?

What do you dislike about Scn #2?

Scenario 3 Feedback

What do you like about Scn #3?

What do you dislike about Scn #3?

Scenario 4 Feedback

What do you like about Scn #4?

What do you dislike about Scn #4?

Other Feedback