



# **Branchton Area**

## **Proposed School Boundary Change**

**Public Information Meeting**  
**January 6, 2026**

# Introduction and Meeting Norms

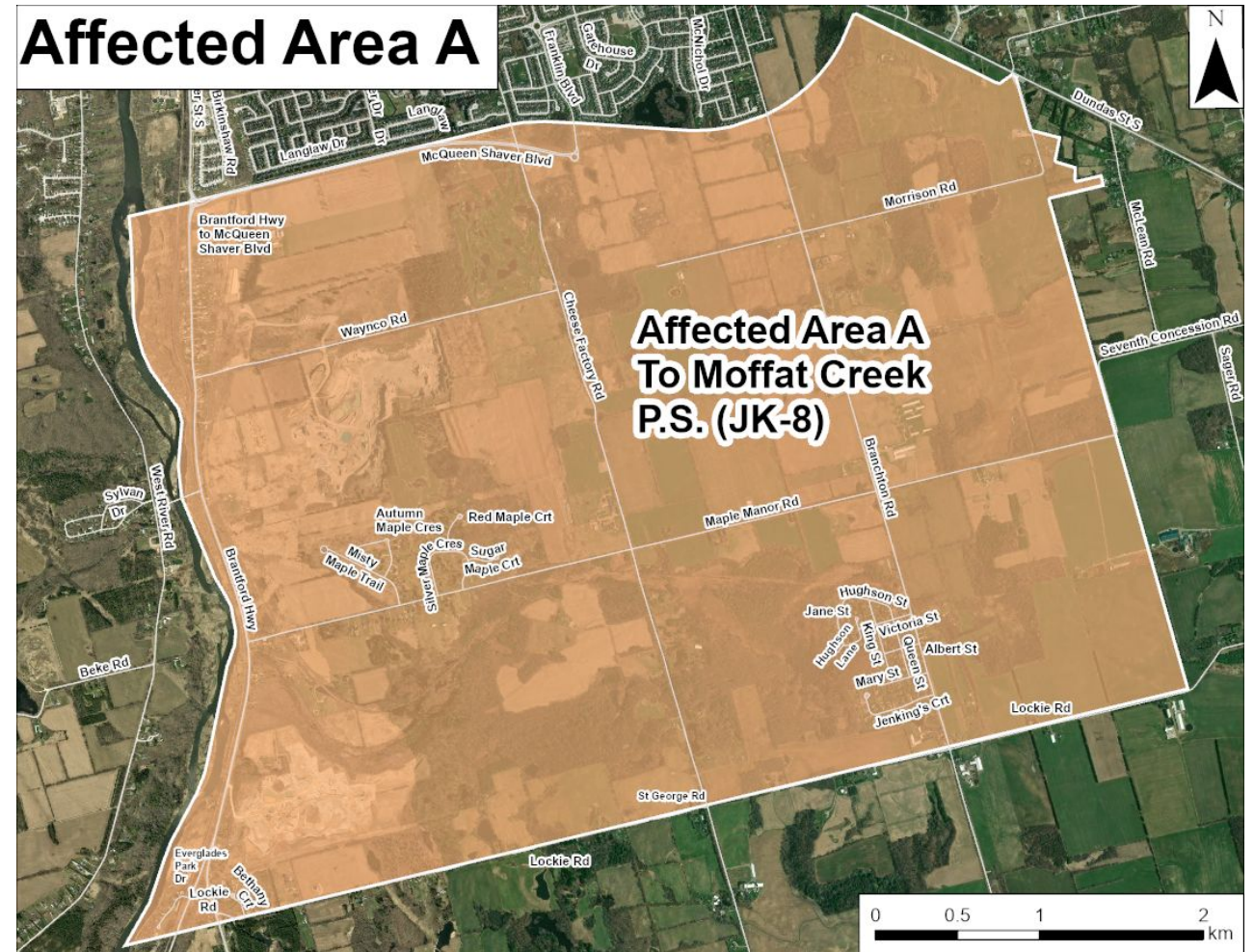
- Meeting Norms
  - Please ensure you are muted
  - Questions can be entered into the chat and we will work through them after the slides are completed

**All content submitted into the chat should be respectful, disrespect will not be tolerated.**

# Why Are We Here?

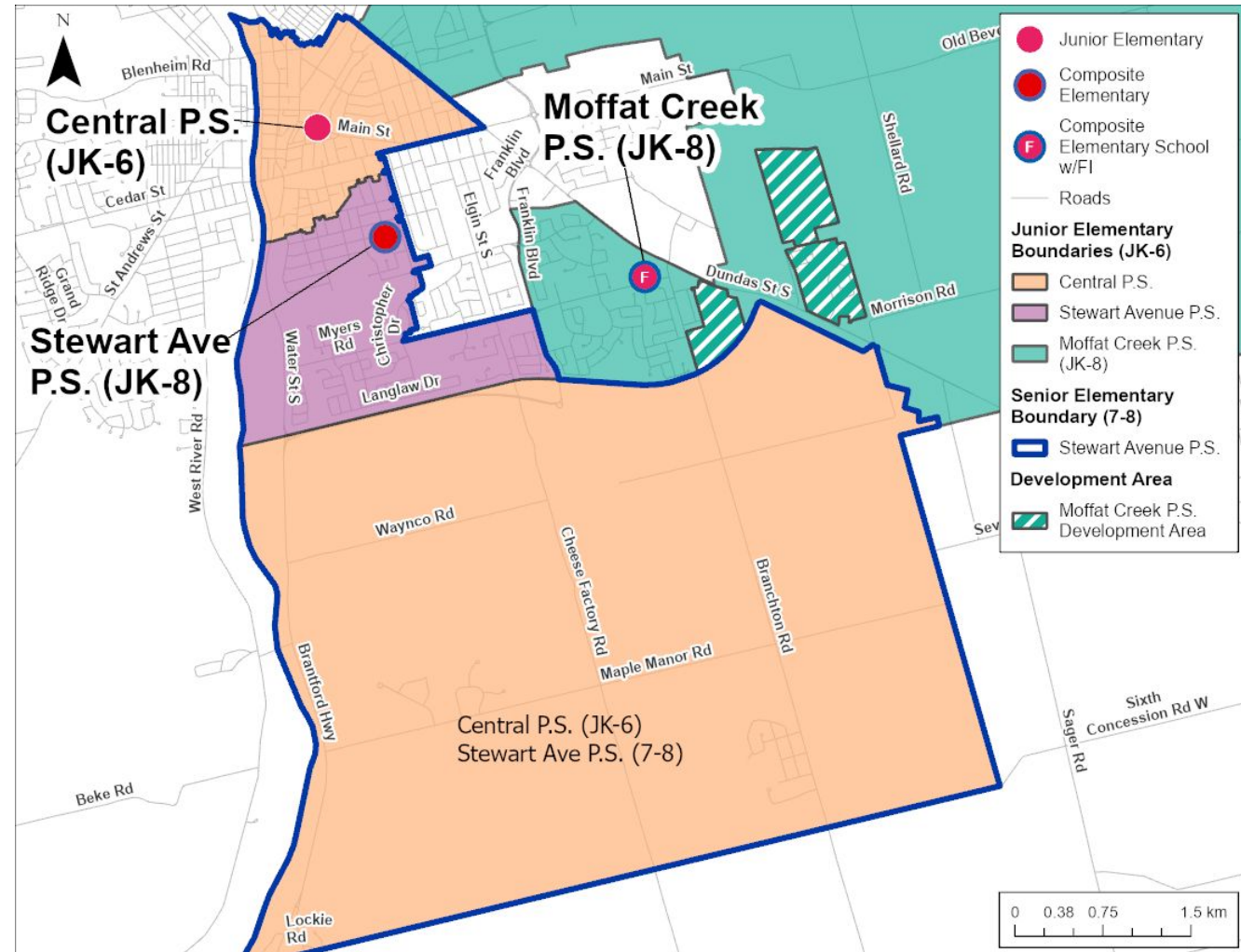
## Background:

- Families in Branchton expressed interest in attending Moffat Creek PS
- Review initiated in response to this feedback

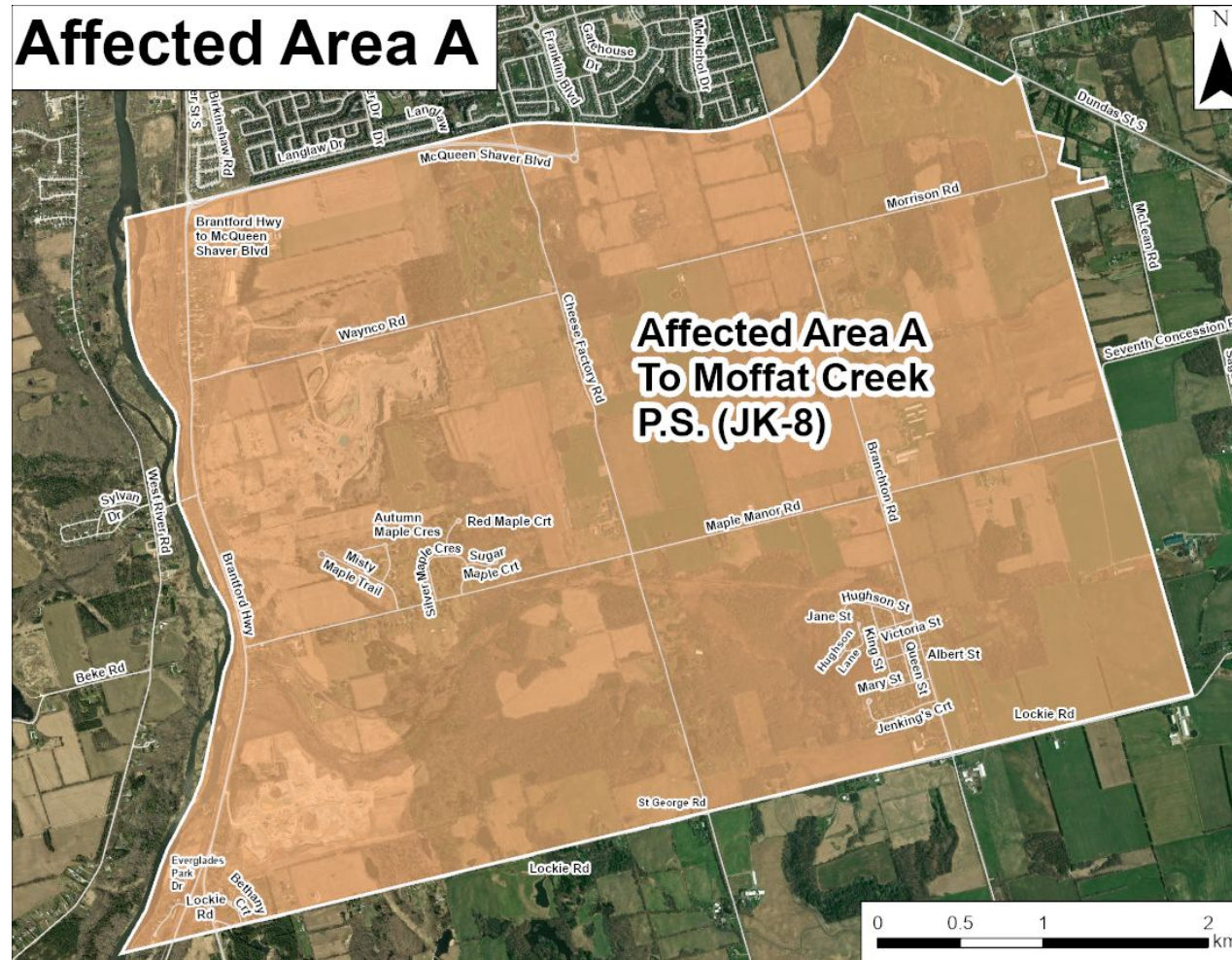


# Boundary Review Scope

- Central Public School (JK-6)
- Stewart Avenue Public School (JK-8)
- Moffat Creek Public School (JK-8)



# Proposed New Boundaries



# School Information - Moffat Creek PS

<b>Grades</b>	Junior Kindergarten to Grade 8
<b>French Immersion (Optional)</b>	Grades 2-8
<b>Bell Times</b>	8:30 AM - 2:50 PM
<b>School Size</b>	642 pupil places + 4 portables
<b>Site Size</b>	13.9 acres
<b>Building Age</b>	Constructed in 2012
<b>Child Care (Infant to Preschool)</b>	YMCA of Three Rivers Child Care Centre
<b>Extended Day (JK- 12 years-old)</b>	YMCA of Three Rivers

# Draft Recommendation - Potential Impacts

## **Current Junior Kindergarten to Grade 5 Students (SK to Grade 6 in 2026-2027)**

- Directed to Moffat Creek PS, transportation provided
- Option to remain at Central PS, transportation **not provided**

## **Current Grade 6 Students (Grade 7 in 2026-2027)**

- Directed to Moffat Creek PS, transportation provided

# Draft Recommendation - Potential Impacts

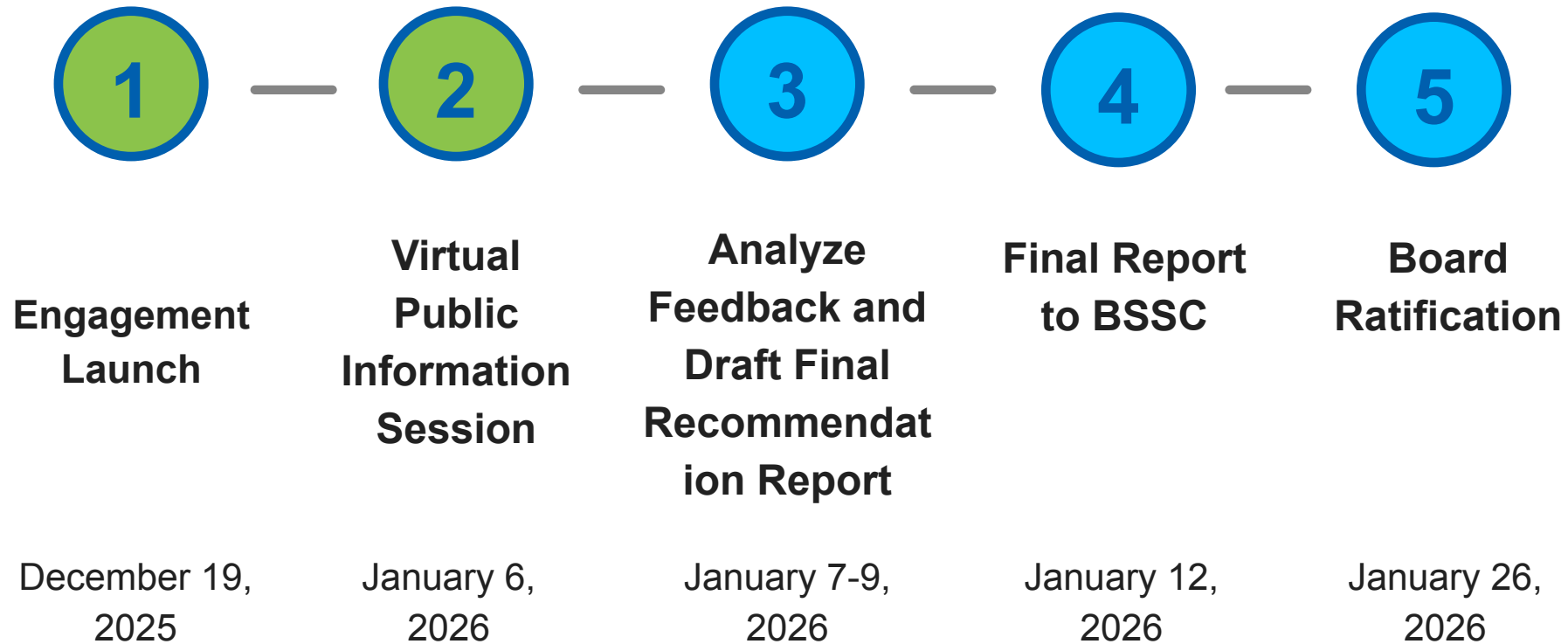
## **Current Grade 7 Students (Grade 8 in 2026-2027)**

- Attend Stewart Avenue PS (legacy provision), transportation provided; OR
- Attend Moffat Creek PS (optional), transportation provided

## **New registrations (JK-8)**

- Directed to Moffat Creek PS, transportation provided

# Timeline



# French Immersion - Grade 2 in 2026

- Grade 1 students residing in Affected Area A wishing to enrol in French immersion for Grade 2 in 2026 should apply using the [French immersion application process](#)
- If the new boundaries are approved, Moffat Creek PS will be considered the designated school for Affected Area A in the French immersion the lottery
- For questions about French immersion, please contact [frenchprograms@wrdsb.ca](mailto:frenchprograms@wrdsb.ca)

# FEEDBACK FORM

[planning@wrdsb.ca](mailto:planning@wrdsb.ca)



# Thank you!

[planning@wrdsb.ca](mailto:planning@wrdsb.ca)  
519-570-0003 x 4439

