

Southwest Kitchener Secondary Boundary Study Preferred Scenario

The preferred scenario proposes the following to be implemented in September 2020:

Assign Glencairn PS and Country Hills PS elementary boundary areas to Cameron Heights CI (from Huron Heights SS)

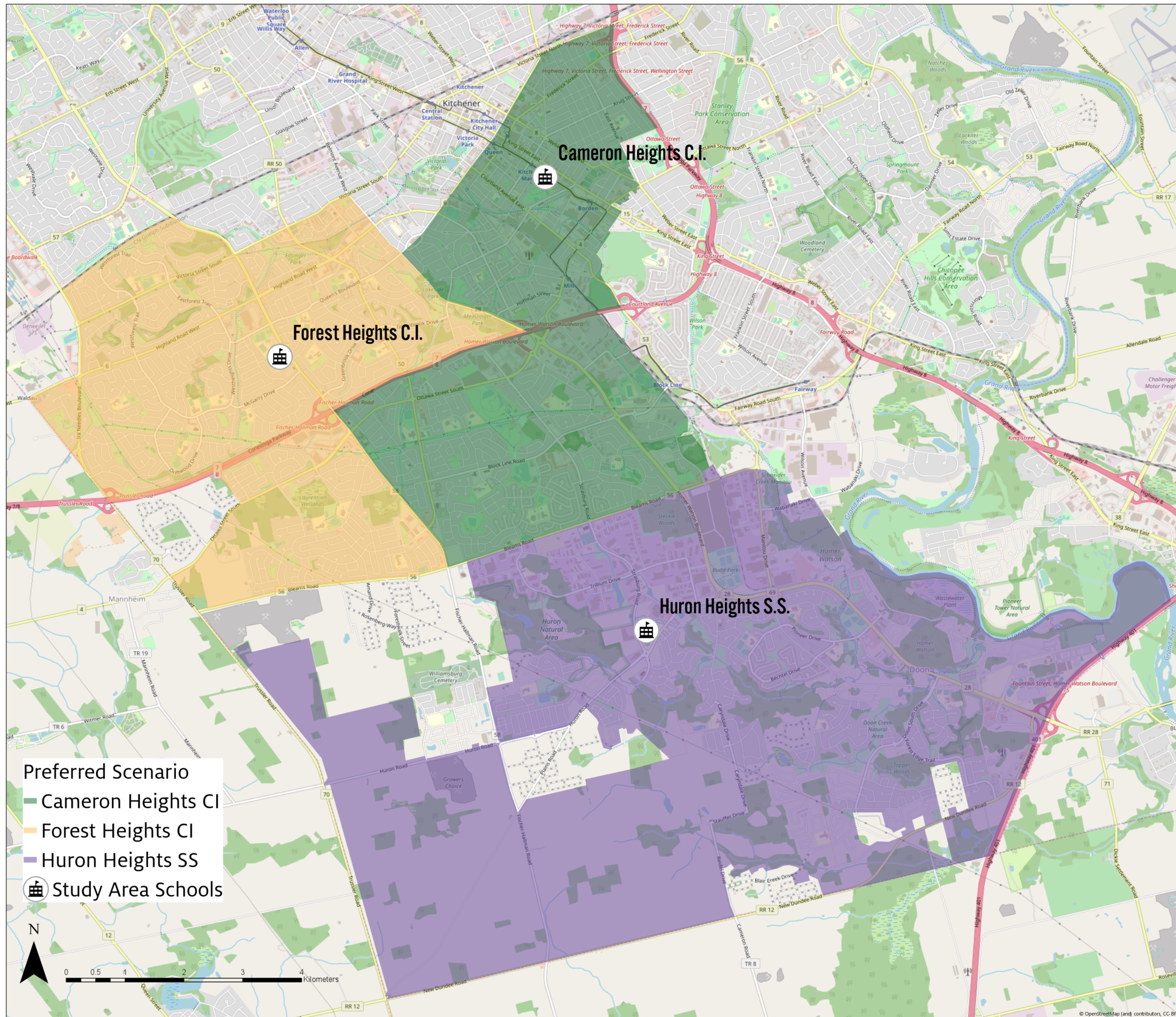
Assign Williamsburg PS, WT Townshend PS, and the west portion of Alpine PS elementary boundary areas to Forest Heights CI (from Cameron Heights CI)

'To-be-determined' Status given to Doon South and Huron South Development Areas (future holding school assignment to be handled outside of the boundary study)

Phased implementation starting with Grade 9 in September 2020

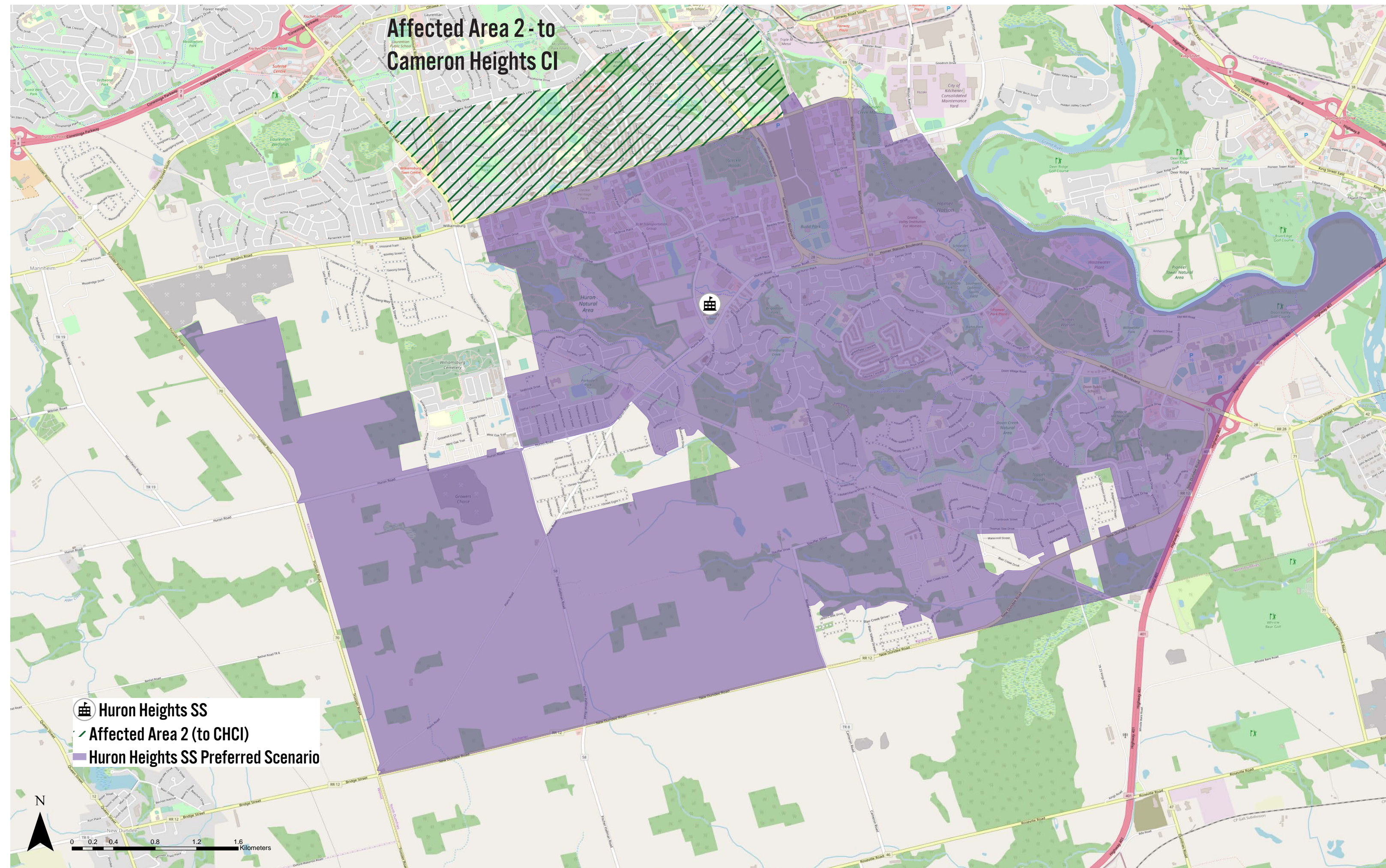
Grandparent existing Grade 9-11 students (2020/2021 Grade 10-12 students), meaning students may stay at the secondary school where they started, or are currently attending until they graduate

Any proposed changes are subject to Board of Trustee approval.



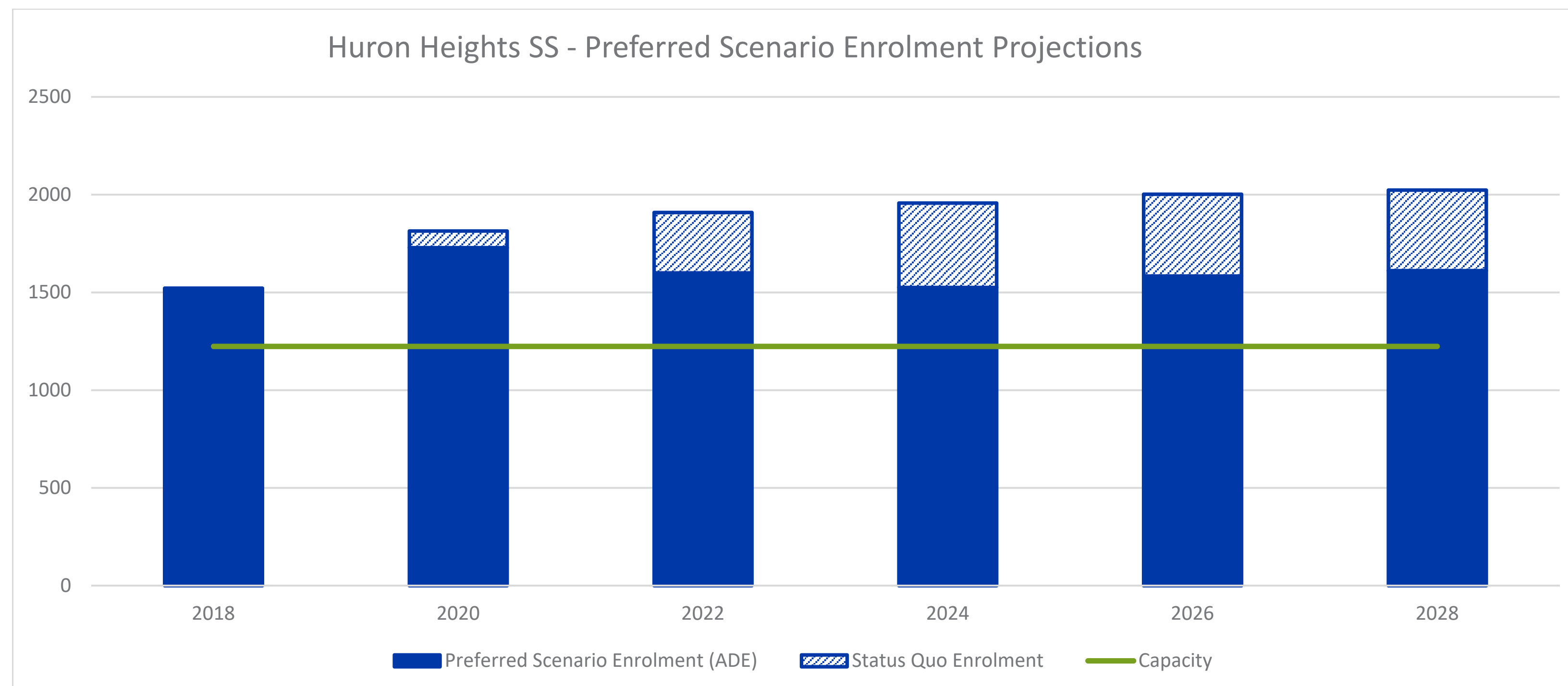
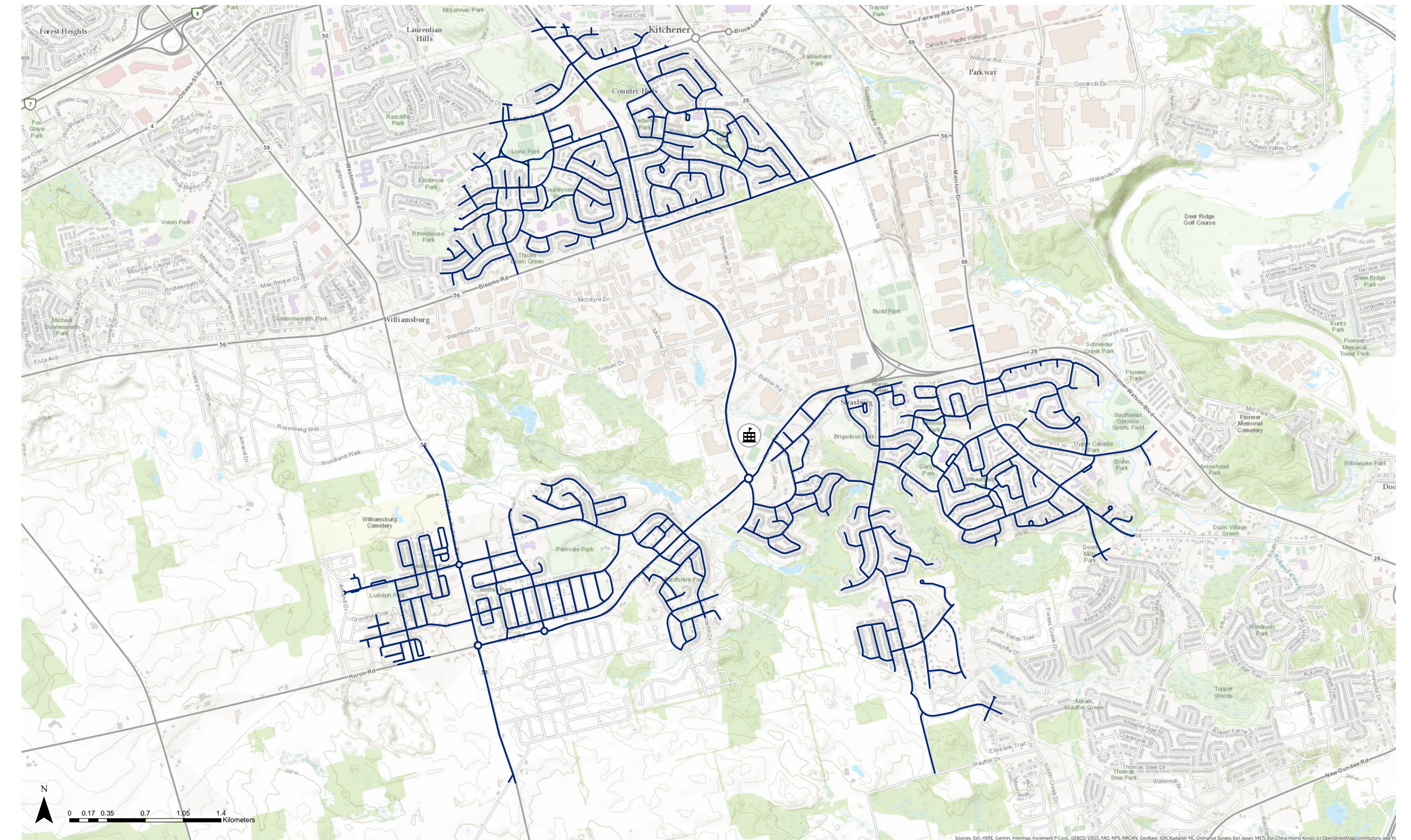
HURON HEIGHTS SECONDARY SCHOOL

Preferred Scenario Boundary



Areas within walking distance (3.2 km) of Huron Heights SS

For illustrative purposes only. May not accurately represent eligibility for transportation.

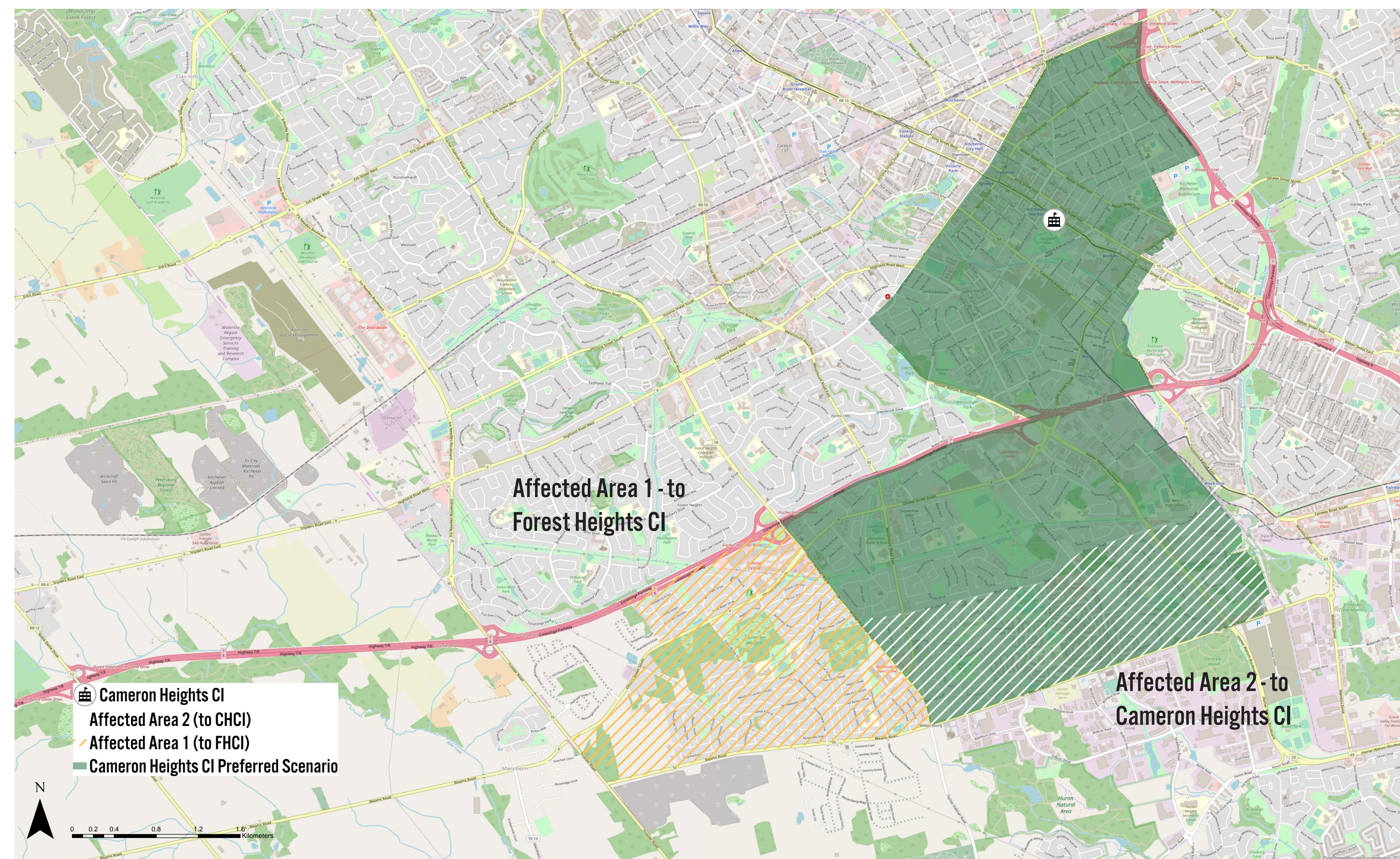


Preferred Scenario Implementation

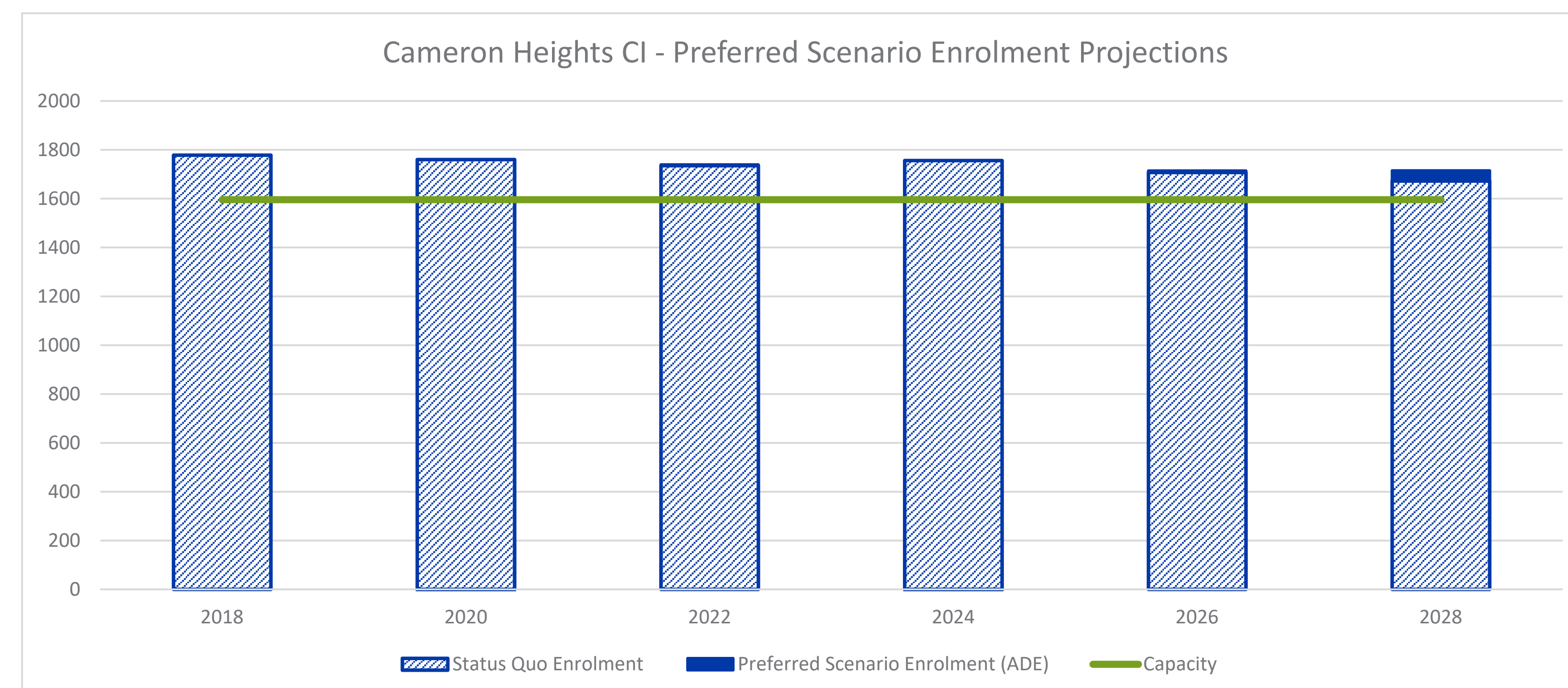
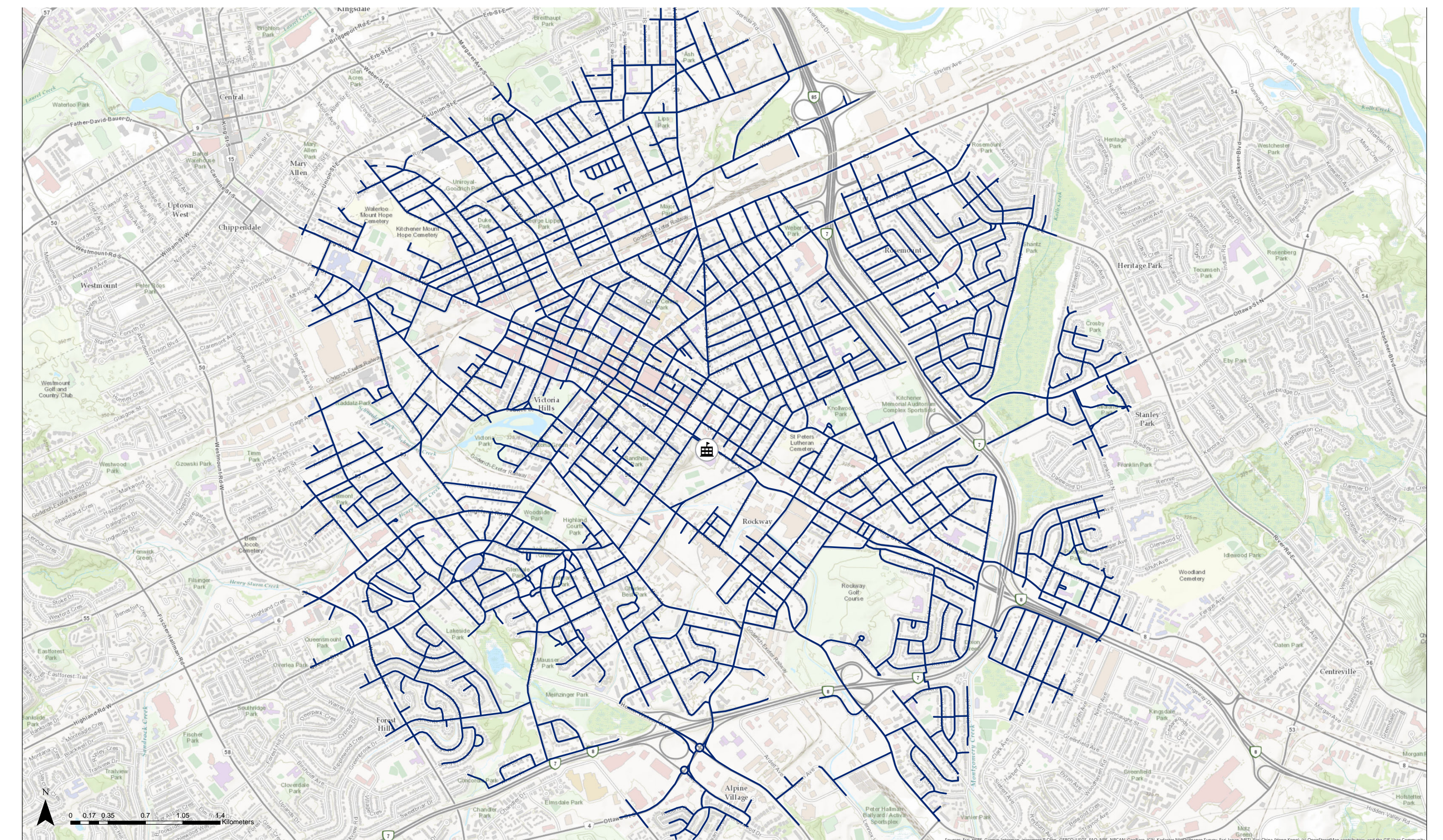
- > Phased implementation begins with grade 9 students in 2020/2021
- > Assign Glencairn PS and Country Hills PS elementary boundary areas to Cameron Heights CI (from Huron Heights SS)
- > Grandparent existing Grade 9-11 students (2020/2021 Grade 10-12 students), meaning students may stay at the secondary school where they started, or are currently attending until they graduate (with transportation if eligible)

CAMERON HEIGHTS COLLEGIATE INSTITUTE

Preferred Scenario Boundary



Areas within walking distance (3.2 km) of Cameron Heights CI
For illustrative purposes only. May not accurately represent eligibility for transportation.

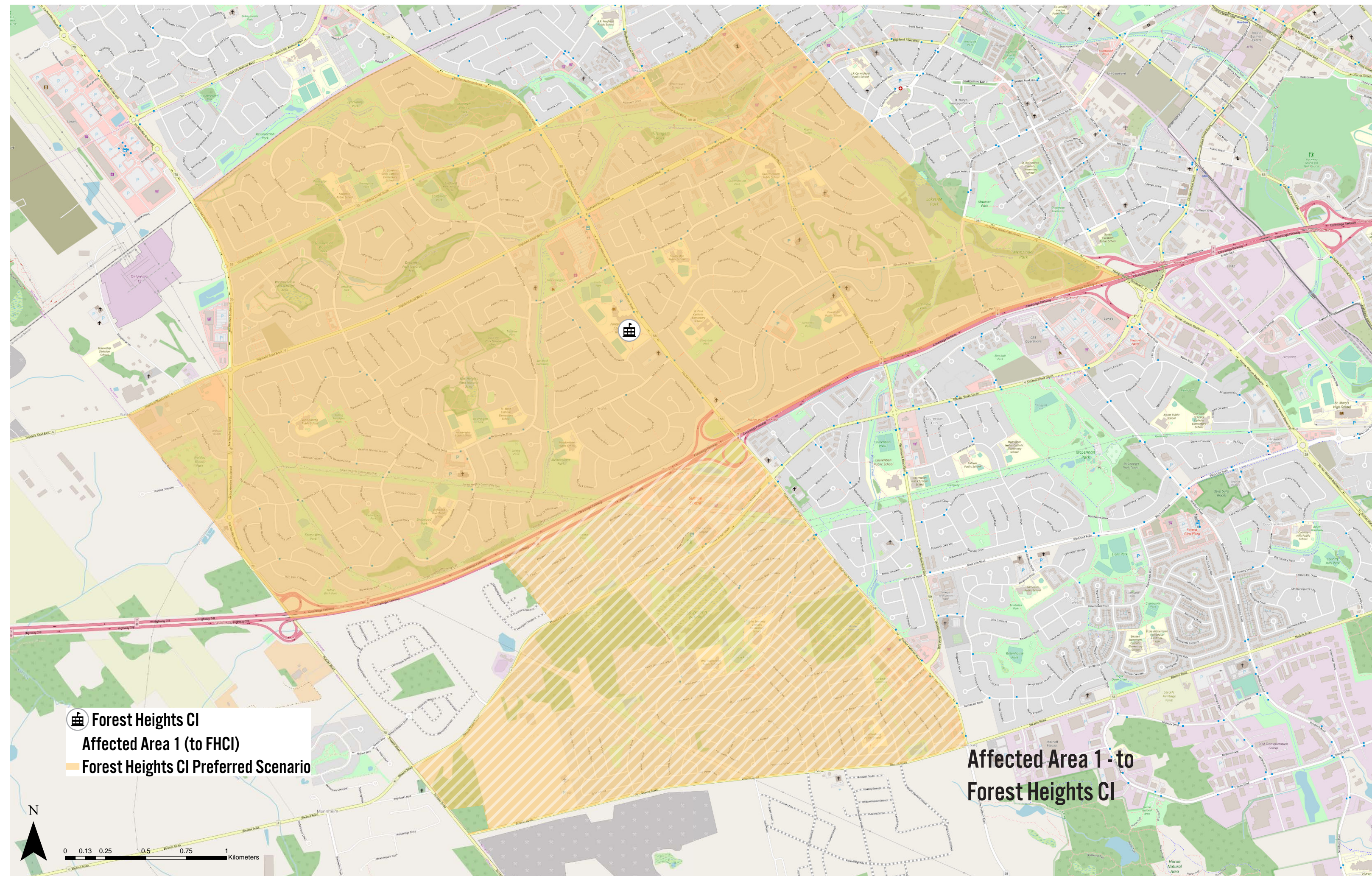


Preferred Scenario Implementation

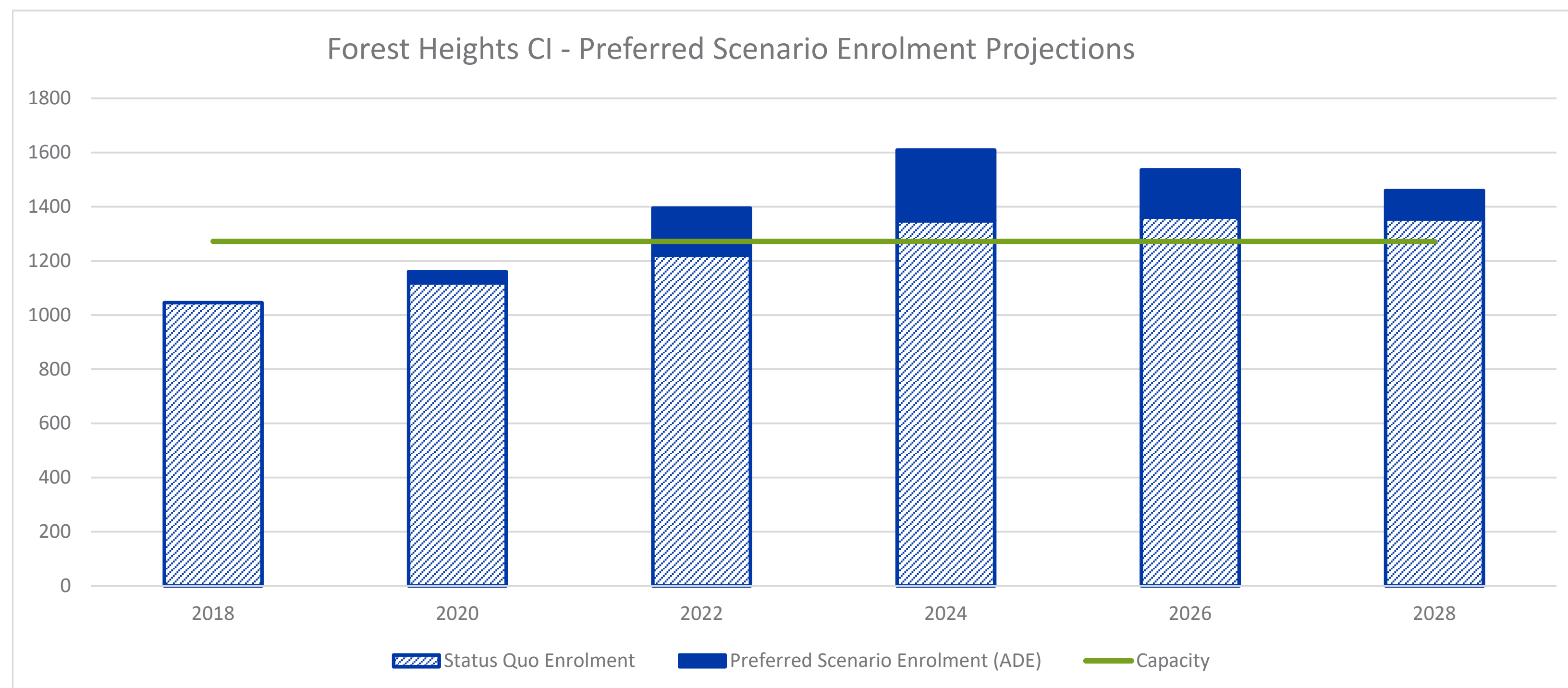
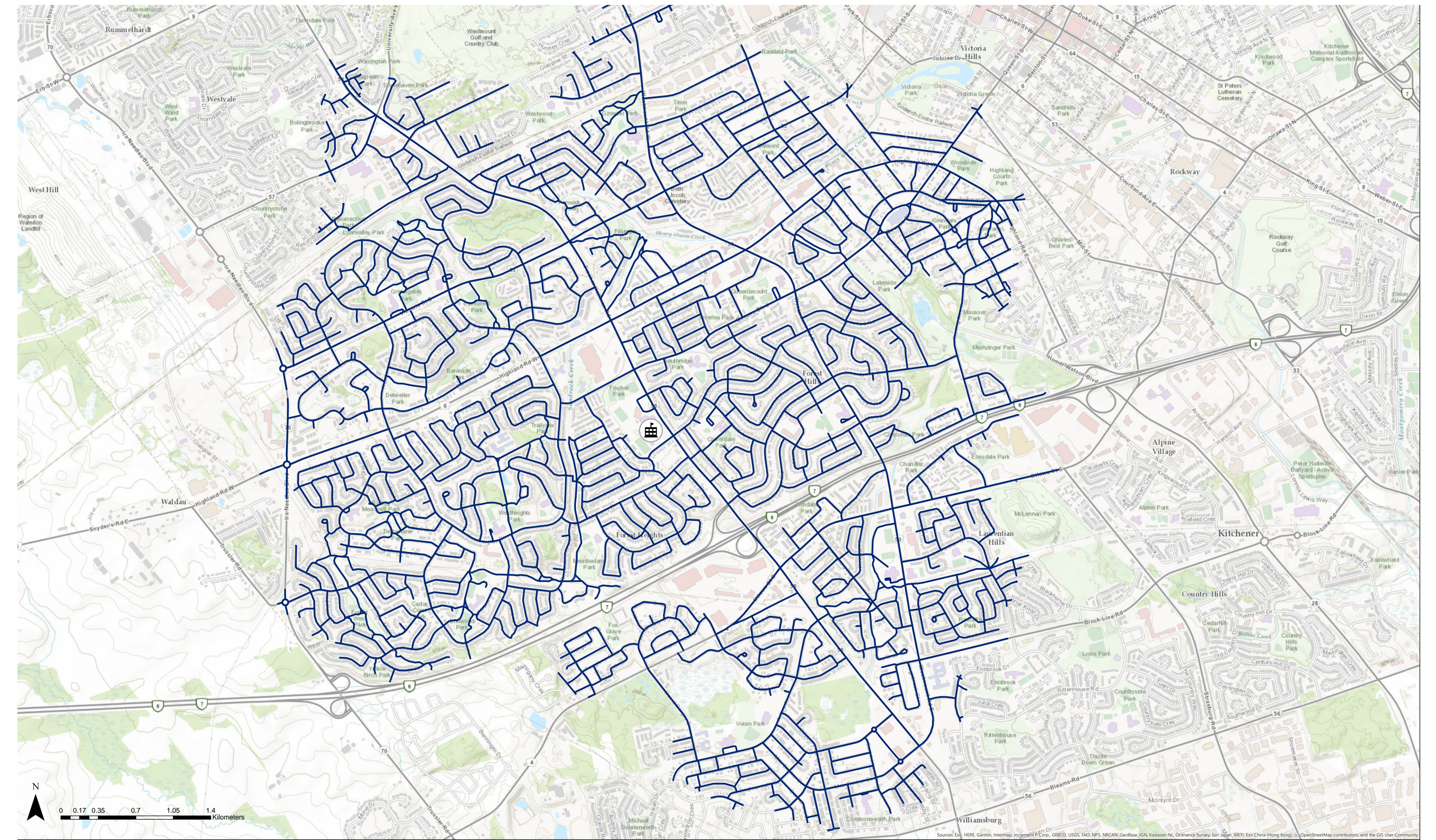
- > Phased implementation begins with grade 9 students in 2020/2021
- > Assign Williamsburg PS, WT Townshend PS, and the west portion of Alpine PS elementary boundary areas to Forest Heights CI (from Cameron Heights CI)
- > Grandparent existing Grade 9-11 students (2020/2021 Grade 10-12 students), meaning students in affected area 1 may stay at Cameron Heights CI until they graduate (with transportation if eligible)
- > Grandparent existing Grade 9-11 students (2020/2021 Grade 10-12 students), meaning students in affected area 2 may stay Huron Heights SS until they graduate (with transportation if eligible)

FOREST HEIGHTS COLLEGIATE INSTITUTE

Preferred Scenario Boundary



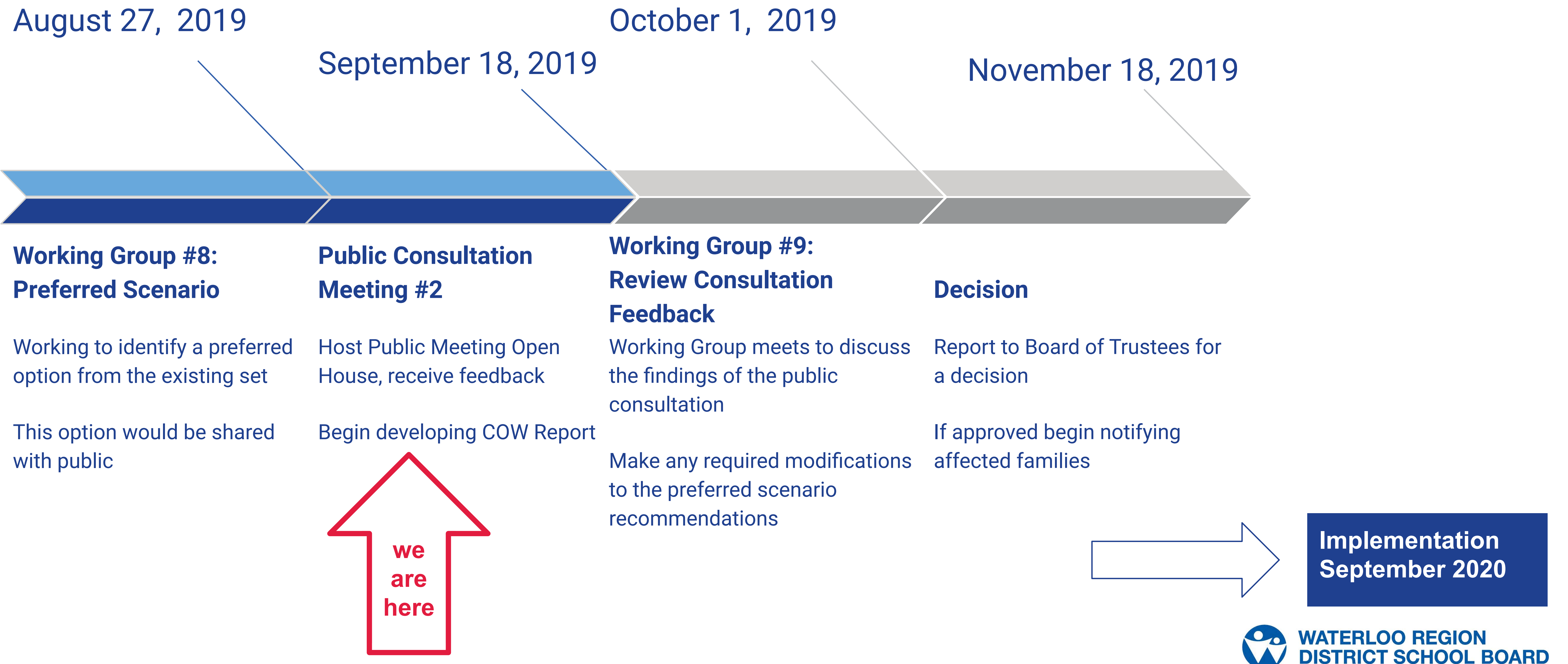
Areas within walking distance (3.2 km) of Forest Heights CI
 For illustrative purposes only. May not accurately represent eligibility for transportation.



Preferred Scenario Implementation

- > Phased implementation begins with grade 9 students in 2020/2021
- > Assign Williamsburg PS, WT Townshend PS, and the west portion of Alpine PS elementary boundary areas to Forest Heights CI (from Cameron Heights CI)
- > Grandparent existing Grade 9-11 students (2020/2021 Grade 10-12 students), meaning students in affected area may stay at Cameron Heights CI until they graduate (with transportation if eligible)

NEXT STEPS



BOUNDARY IMPLEMENTATION

	Grade			
2020/2021	9	10	11	12
2021/2022	9	10	11	12
2022/2023	9	10	11	12
2023/2024	9	10	11	12

Legend	New Boundary	Grandparented/Exempted
	New Boundary	Grandparented/Exempted

Under the preferred scenario recommendations, implementation will be phased.

The phased in boundary is depicted in the blue part of the table and begins with Grade 9 students in 2020/2021.

By 2023/2024 the phase in is complete and students in all grades attend schools based on the preferred scenario boundary.

BOUNDARY STUDY OBJECTIVES

The preferred scenario and recommendations to address over-enrolment at Huron Heights SS will give consideration to;

- efficiency of transportation
(students within walking distance, access to bus routes)
- permanent capacity of schools, future construction requirements
(site suitability for addition, availability of program spaces, physical safety)
- impact on feeder schools / split feeds, surrounding schools
(Grade 8 students moving to secondary school)
- minimizing the impact on students where changes are proposed
(consideration for grandparenting/exemptions, phased implementation)

DEVELOPMENT AREA INFORMATION

The preferred scenario recommends removing the Doon South and Huron South Development Areas (DAs) from Forest Heights CI and addressing their assignment to a different holding school in a separate process.

More info about DAs can be found online here www.wrdsb.ca/planning/holding-schools/
The complete procedure is here bit.ly/AP4992

DEVELOPMENT AREA	DEVELOPMENT AREA ENROLMENT PROJECTIONS (AVERAGE DAILY ENROLMENT)				
	2020	2022	2024	2026	2028
Doon South Development Area	35	64	80	110	126
Huron South Development Area	25	48	94	121	136
Total	60	112	174	231	262

WAYS TO GIVE YOUR FEEDBACK

We want to hear from you! Information you provide will help us analyze the preferred scenario and if necessary, make modifications before we bring recommendations to the Board of Trustees for a final decision.

You can contribute to the conversation by;

- emailing us at boundaryfeedback@wrdsb.ca, Trustees and the Working Group will see these messages;
- completing a brief survey about the preferred scenario here - bit.ly/SurveySWKSBS;
- providing your response to the questions posed here tonight (sticky notes) or, you may wish to complete a written comment form and leave it with us; and
- when it comes time for the Board to vote, you may wish to come out and be heard by Trustees directly, information on how to register as a delegate is available here www.wrdsb.ca/trustees/become-a-delegate/

FEEDBACK OPPORTUNITY - Post-It Notes

What do you like about the proposed implementation?

What would you change about the proposed implementation?

FEEDBACK OPPORTUNITY - Post-It Notes

Do you have any comments or concerns about transportation in the preferred scenario?

FEEDBACK OPPORTUNITY - Post-It Notes

Which of the objectives is most meaningful to you?

FEEDBACK OPPORTUNITY - Post-It Notes

How do the recommendations of the preferred scenario impact your family?

What would you change about the recommendations of the preferred scenario?