

The background of the slide is a close-up photograph of two hands holding a green pencil, drawing on a piece of paper. The image is overlaid with a semi-transparent blue filter. The text "SOUTHWEST KITCHENER SECONDARY BOUNDARY STUDY" is written in large, white, bold, sans-serif capital letters across the middle of the image.

SOUTHWEST KITCHENER SECONDARY BOUNDARY STUDY

Working Group Meeting #4

January 22, 2019

Huron Heights SS

AGENDA

Introductions

Review and Approval of Minutes

January 8, 2019 - Meeting #3

Scenario #3 (New)

Scenario #4 (New)

Review Scenario #1 and #2

Public Meeting

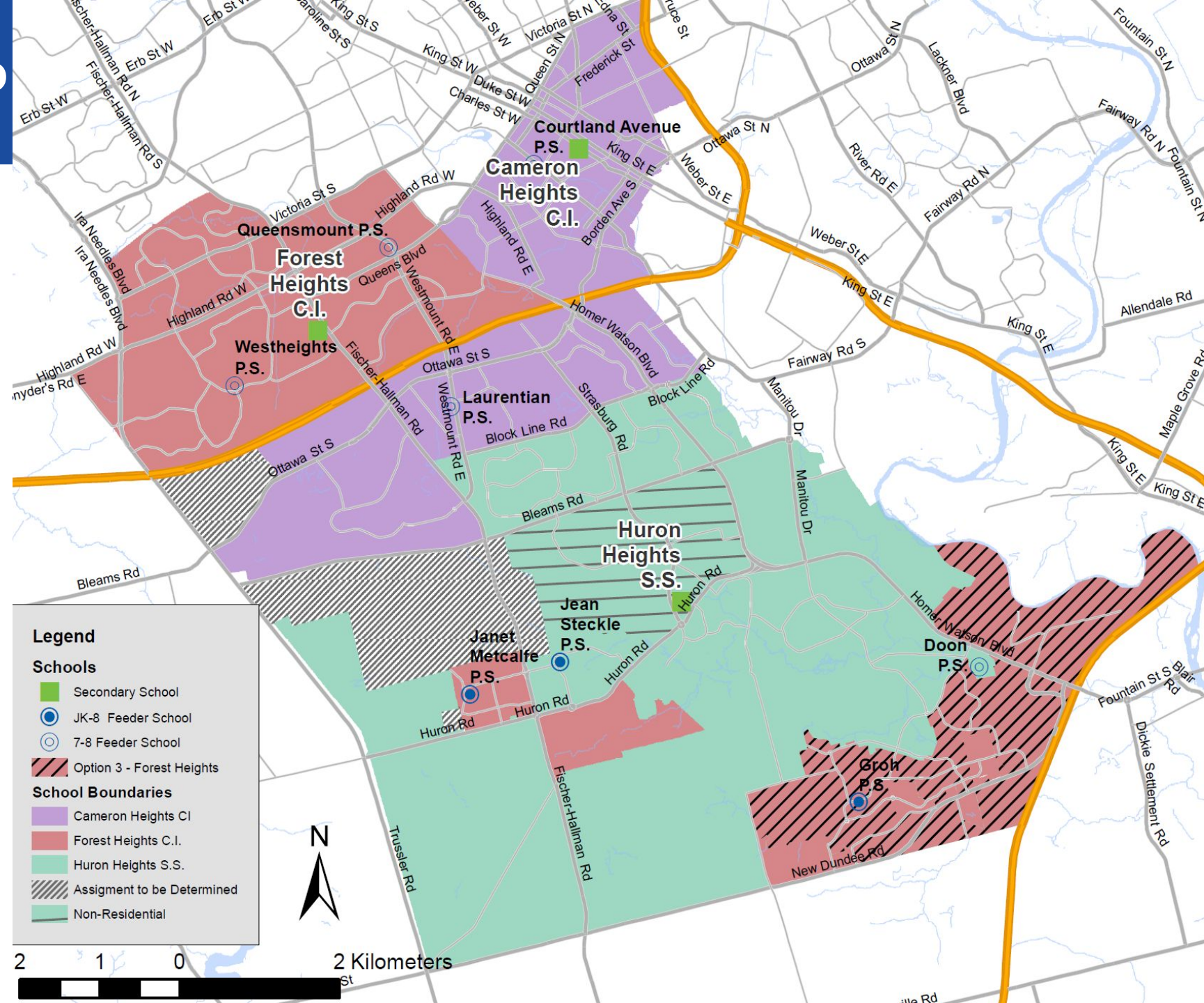
Thursday, February 7, 2019, 7:00pm Huron Heights SS

Minute approval before February 5, by email

Round Table

SCENARIO 3 MAP

Reassign Groh PS and Brigadoon East Areas from Huron Heights to Forest Heights



SCENARIO 3 ENROLMENT PROJECTIONS

Scenario 3 - Reassign Groh and Brigadoon East Areas to Forest Heights

School	Grades	2018 OTG Plus Portable Capacity			Enrolment (ADE)/ Utilization (%)**					
		OTG	Port Cap*	Total Cap (OTG+Ports)	2018	2020	2022	2024	2026	2028
CHCI	9-12	1596	6	1722	1778	1760	1735	1756	1707	1672
					111%	110%	109%	110%	107%	105%
FHCI	9-12	1272	12	1524	1046	1456	1630	1787	1798	1808
					82%	118%	132%	145%	146%	147%
HHSS	9-12	1224	18	1602	1522	1462	1478	1488	1533	1532
					124%	119%	121%	122%	125%	125%

*Portable capacities are based on the current site conditions. In some cases, things like electrical upgrades may increase the amount of portables that can be accommodated at a given site. Portable capacities are provided for information purposes only and are subject to change.

**Utilization calculated using On-the-Ground (OTG) Capacity

SCENARIO 3 IMPACTS

Split Feed

- Doon PS continues to be split between HHSS and FHCI (no reduction)

Development Area

- Groh PS community shares a common secondary school boundary with new development in DA

Program

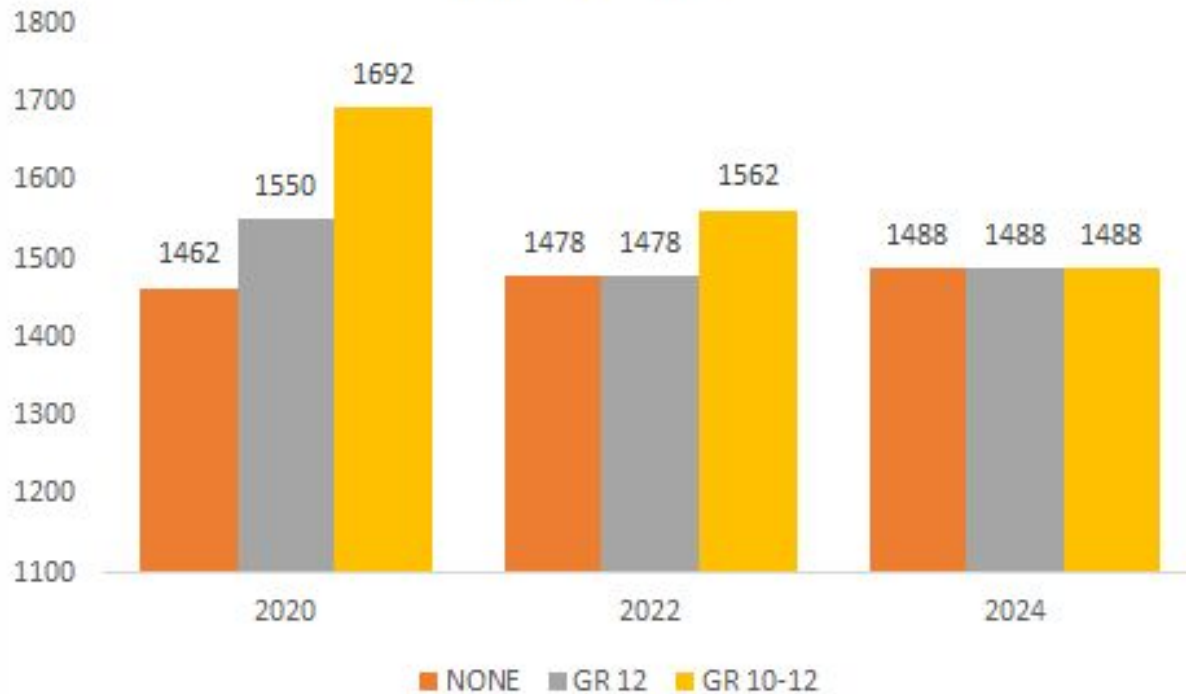
- Forest Heights CI offers Extended French (Groh PS and Doon PS offer French Immersion)

SCENARIO 3 TRANSPORTATION IMPACTS

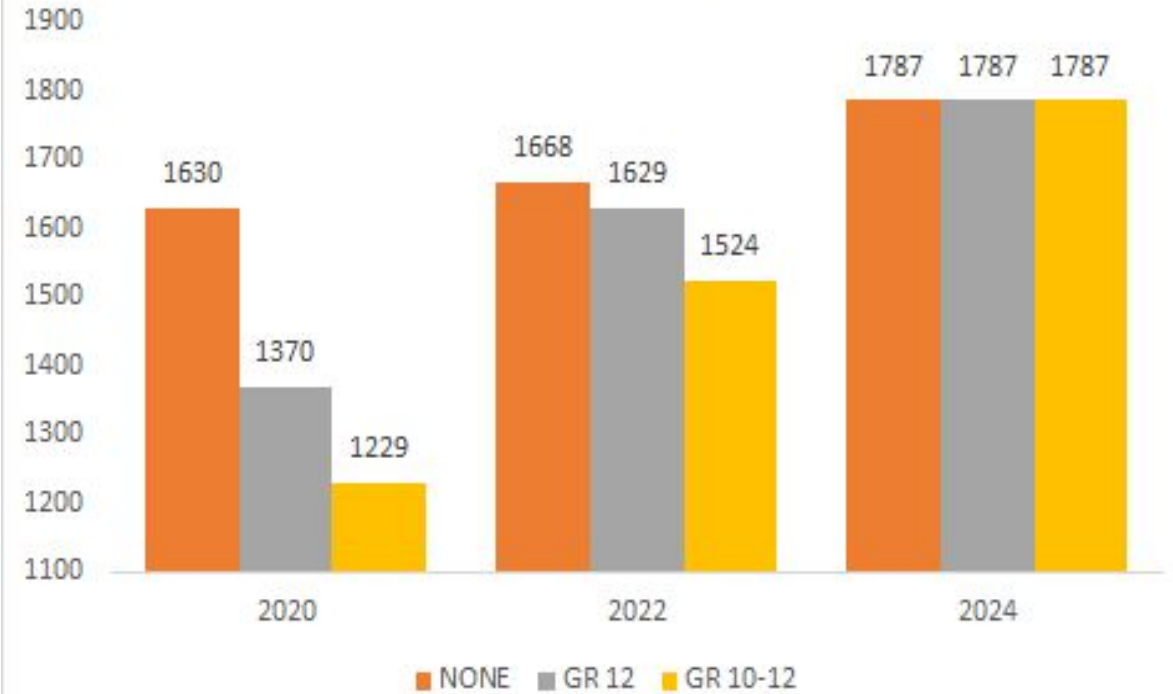
- All students would be transported to Forest Heights
- Area is currently transported to Huron Heights
- Due to routing and bell times, not many efficiencies found and five additional regular school buses required at cost of ***\$210K per year***
- Infrastructure upgrades may be required to accommodate extra buses at Forest Heights

SCENARIO 3 GRANDPARENTING IMPACTS

Scenario 3 Grandparenting Options
Huron Heights SS

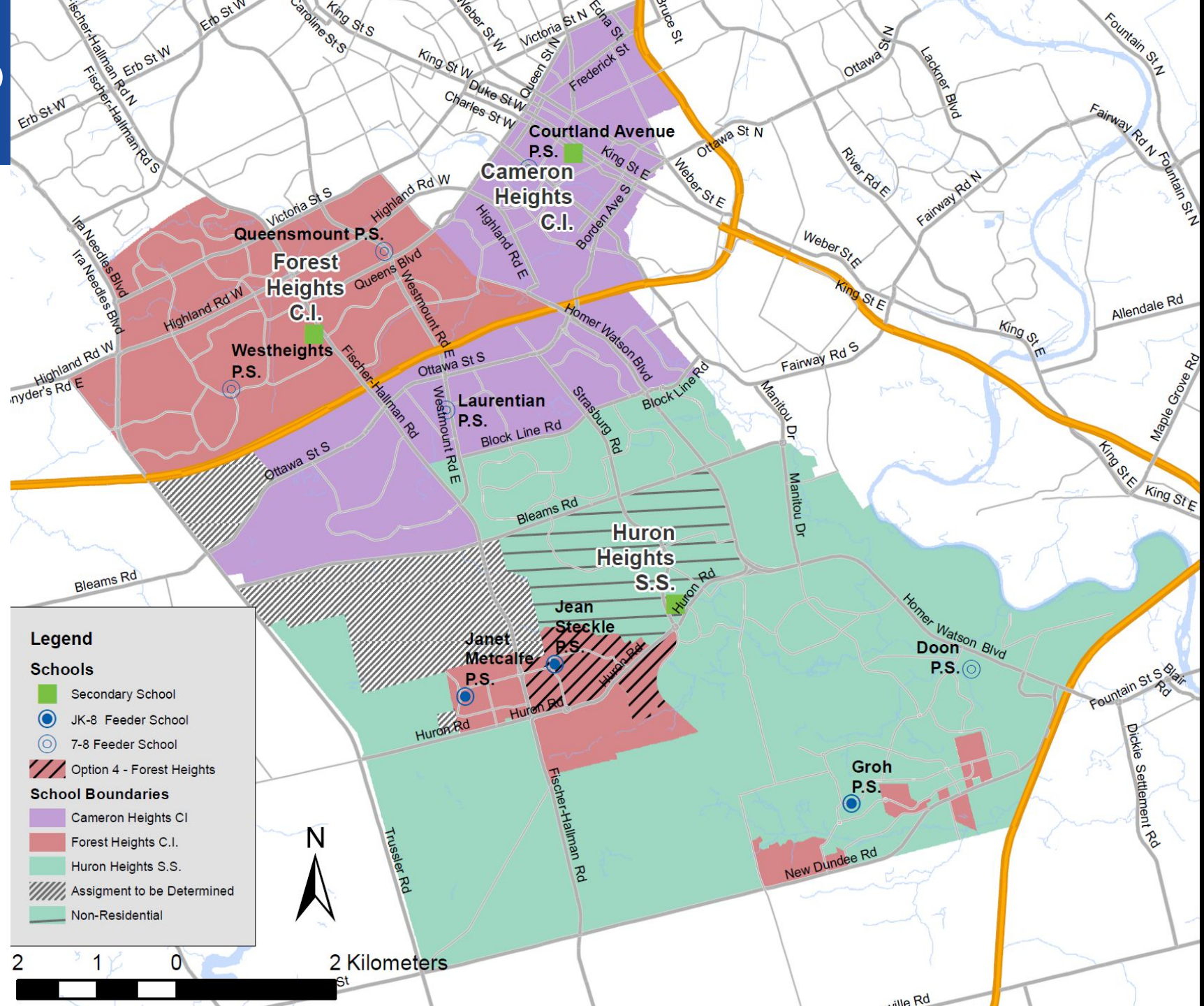


Scenario 3 Grandparenting Options
Forest Heights CI



SCENARIO 4 MAP

Reassign Jean Steckle and Huron Woods Areas from Huron Heights to Forest Heights



SCENARIO 4 ENROLMENT PROJECTIONS

Scenario 4 - Reassign Jean Steckle and Huron Woods Area to Forest Heights

School	Grades	2018 OTG Plus Portable Capacity			Enrolment (ADE)/ Utilization (%)**					
		OTG	Port Cap*	Total Cap (OTG+Ports)	2018	2020	2022	2024	2026	2028
CHCI	9-12	1596	6	1722	1778	1760	1735	1756	1707	1672
					111%	110%	109%	110%	107%	105%
FHCI	9-12	1272	12	1524	1046	1487	1569	1696	1735	1742
					82%	117%	123%	133%	136%	137%
HHSS	9-12	1224	18	1602	1522	1436	1558	1588	1593	1594
					124%	117%	127%	130%	130%	130%

*Portable capacities are based on the current site conditions. In some cases, things like electrical upgrades may increase the amount of portables that can be accommodated at a given site. Portable capacities are provided for information purposes only and are subject to change.

**Utilization calculated using On-the-Ground (OTG) Capacity

SCENARIO 4 IMPACTS

Split Feed

- Janet Metcalfe PS split feed between HHSS and FHCI eliminated if all students are directed to FHCI.

Development Area

- Shared boundary for new development in Huron South DAs, Mattamy Wildflowers DA (Janet Metcalfe's secondary students) and Jean Steckle PS

Program

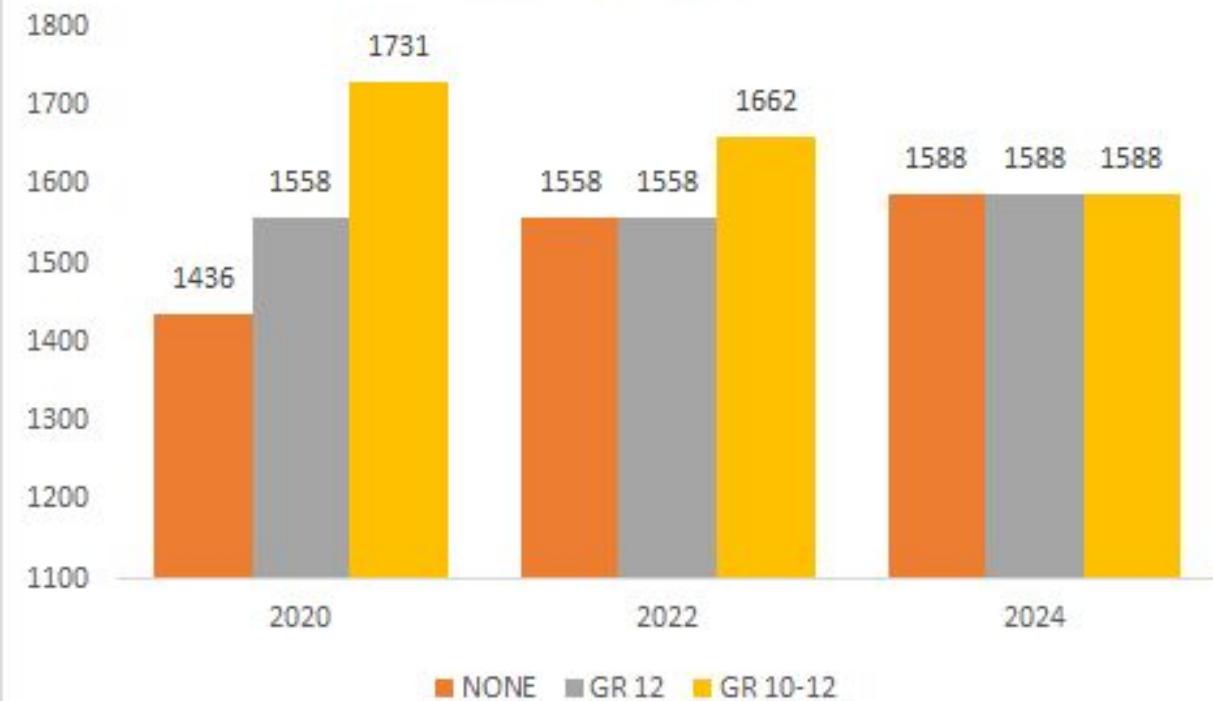
- Forest Heights CI offers Extended French (Jean Steckle PS offers French Immersion)

SCENARIO 4 TRANSPORTATION IMPACTS

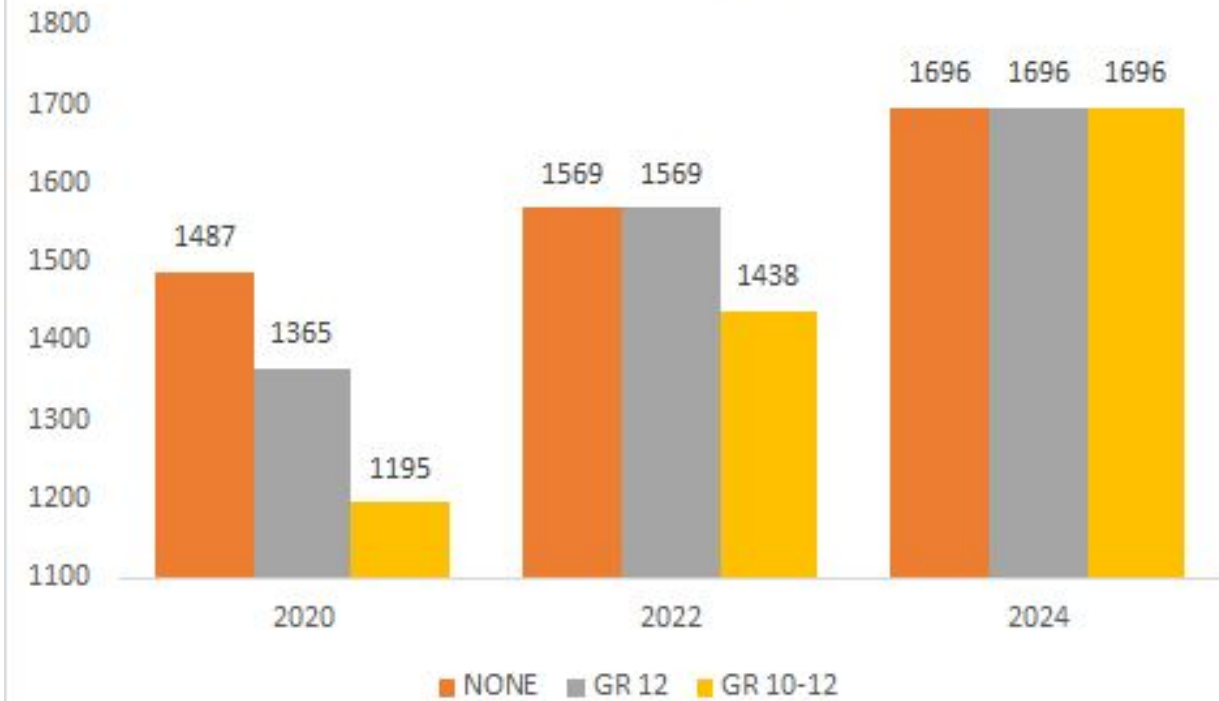
- All students would be transported to Forest Heights
- Area is currently within walking distance of Huron Heights
- Five additional regular school buses required at cost of ***\$210K per year***
- Infrastructure upgrades may be required to accommodate extra buses at Forest Heights

SCENARIO 4 GRANDPARENTING IMPACTS

Scenario 4 Grandparenting Options
Huron Heights SS

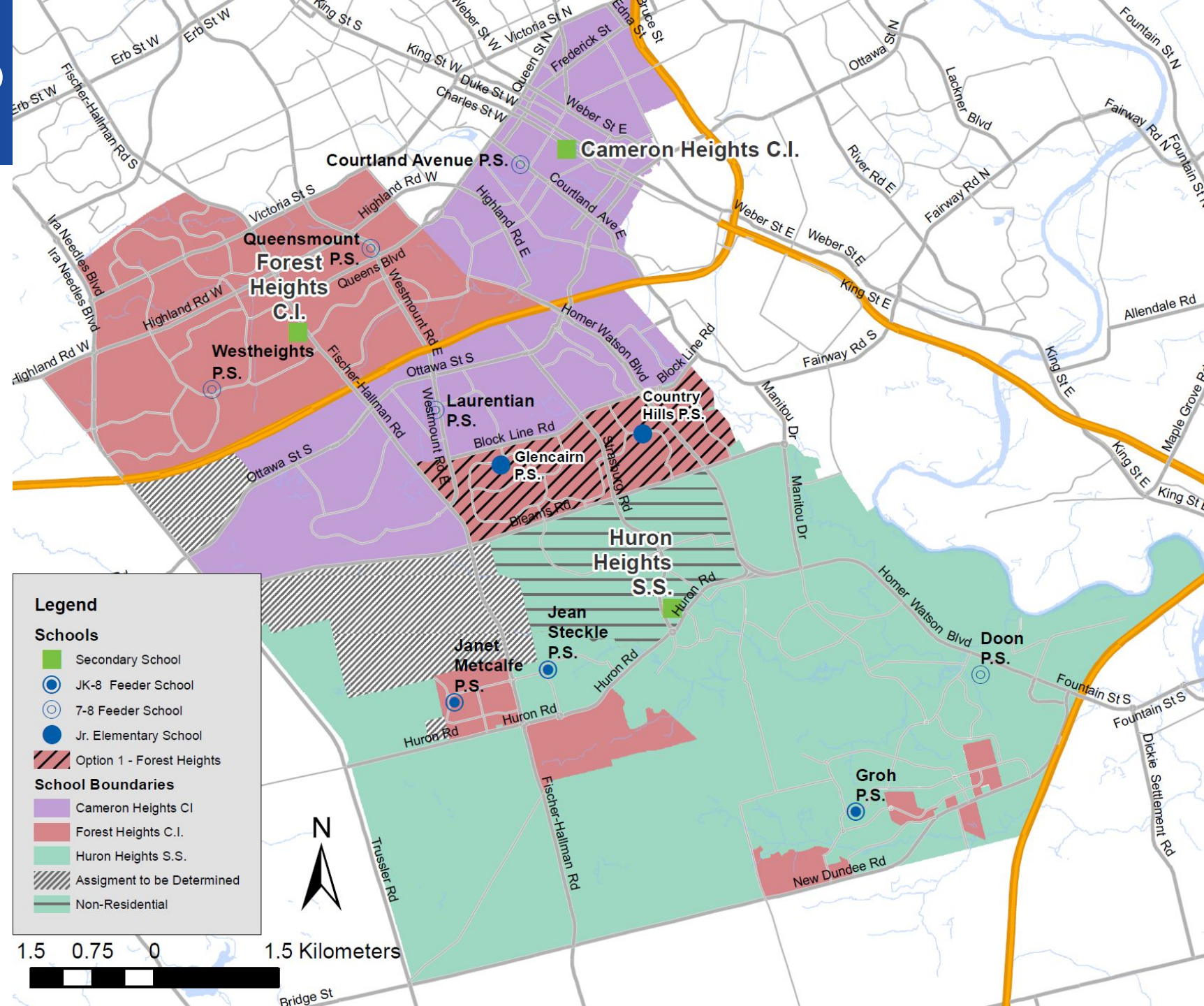


Scenario 4 Grandparenting Options
Forest Heights CI



SCENARIO 1 MAP

Reassign Glencairn PS and Country Hills PS Areas from Huron Heights to Forest Heights



SCENARIO 1 ENROLMENT PROJECTIONS

Scenario 1 - Reassign Country Hills and Glencairn to Forest Heights

School	Grades	2018 OTG Plus Portable Capacity			Enrolment (ADE)/ Utilization (%)**					
		OTG	Port Cap*	Total Cap (OTG+Ports)	2018	2020	2022	2024	2026	2028
CHCI	9-12	1596	6	1722	1778	1760	1735	1756	1707	1672
					111%	110%	109%	110%	107%	105%
FHCI	9-12	1272	12	1524	1046	1455	1634	1768	1768	1760
					82%	114%	127%	135%	133%	132%
HHSS	9-12	1224	18	1602	1522	1481	1497	1525	1584	1611
					124%	121%	122%	125%	129%	132%

*Portable capacities are based on the current site conditions. In some cases, things like electrical upgrades may increase the amount of portables that can be accommodated at a given site. Portable capacities are provided for information purposes only and are subject to change.

**Utilization calculated using On-the-Ground (OTG) Capacity

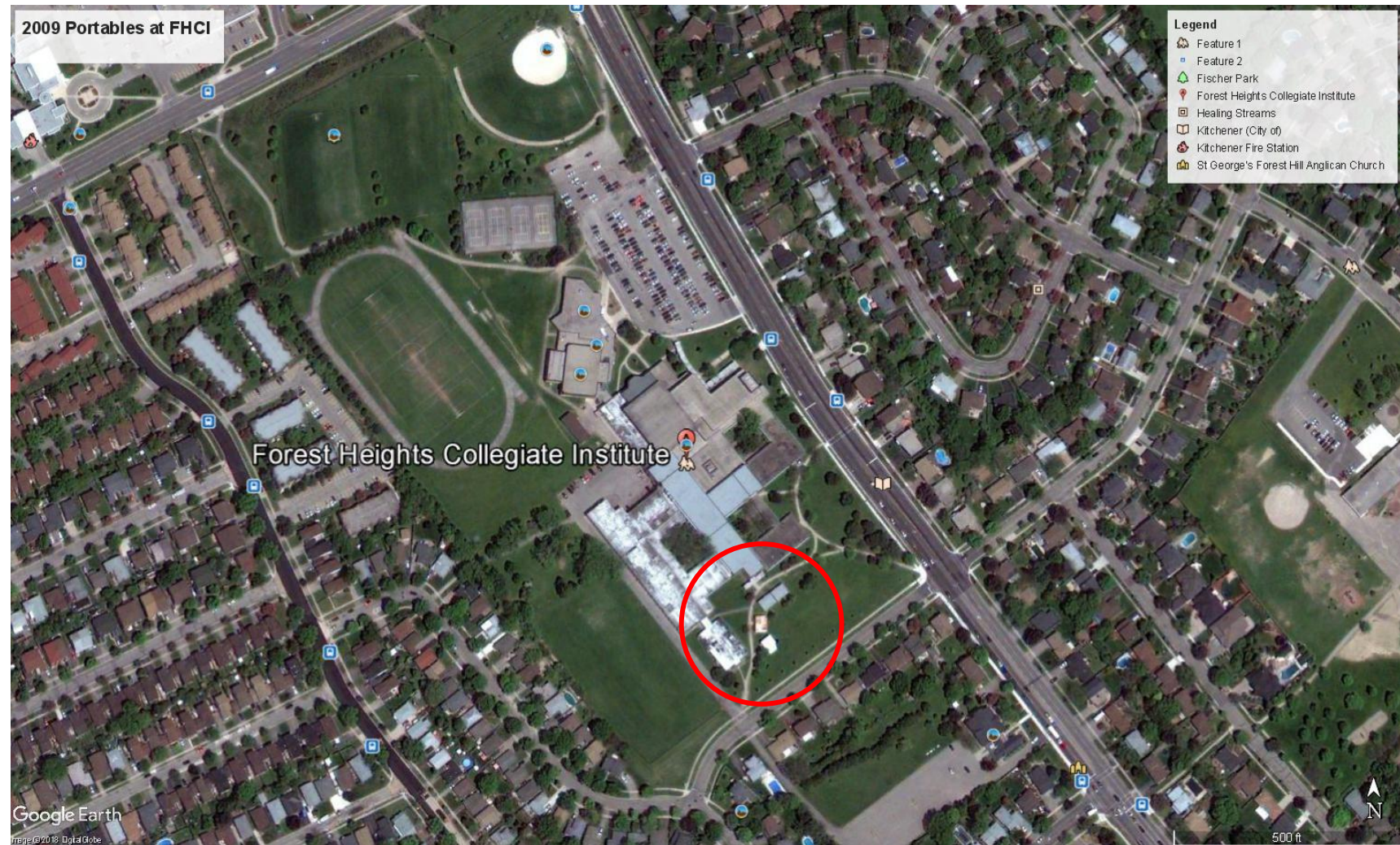
SCENARIO 1 TRANSPORTATION IMPACTS

- Majority of Glencairn and Country Hills not within walking distance of Forest Heights
- Five additional regular school buses required at cost of ***\$210K per year***
- Infrastructure upgrades may be required to accommodate extra buses at Forest Heights

SCENARIO 1 TEMPORARY ACCOMMODATION AT FOREST HEIGHTS CI

in 2009 Forest Heights CI hosted a 6-pak as well as 4 portable classrooms for a total of 10 classrooms. We believe the school can accommodate an even greater number of portables given the large site and we are working with Facility Services to develop a placement plan.

10 portables adds 210 pupil places to FHCI.



FEEDER SCHOOL IMPLICATIONS

LAURENTIAN PS

STATUS QUO

- Cameron Heights
- Huron Heights (GCP, COH)
- Forest Heights (DA)

OPTION 1

- Cameron Heights
- Forest Heights (GCP, COH, DA)

OPTION 2

- Cameron Heights (GCP, COH)
- Forest Heights (DA,ALP)

- Both Option 1 and 2 eliminate feed to Huron Heights

QUEENSMOUNT PS

STATUS QUO

- Cameron Heights (WTT, WLM)
- Forest Heights

OPTION 1

- Cameron Heights (WTT,WLM)
- Forest Heights

OPTION 2

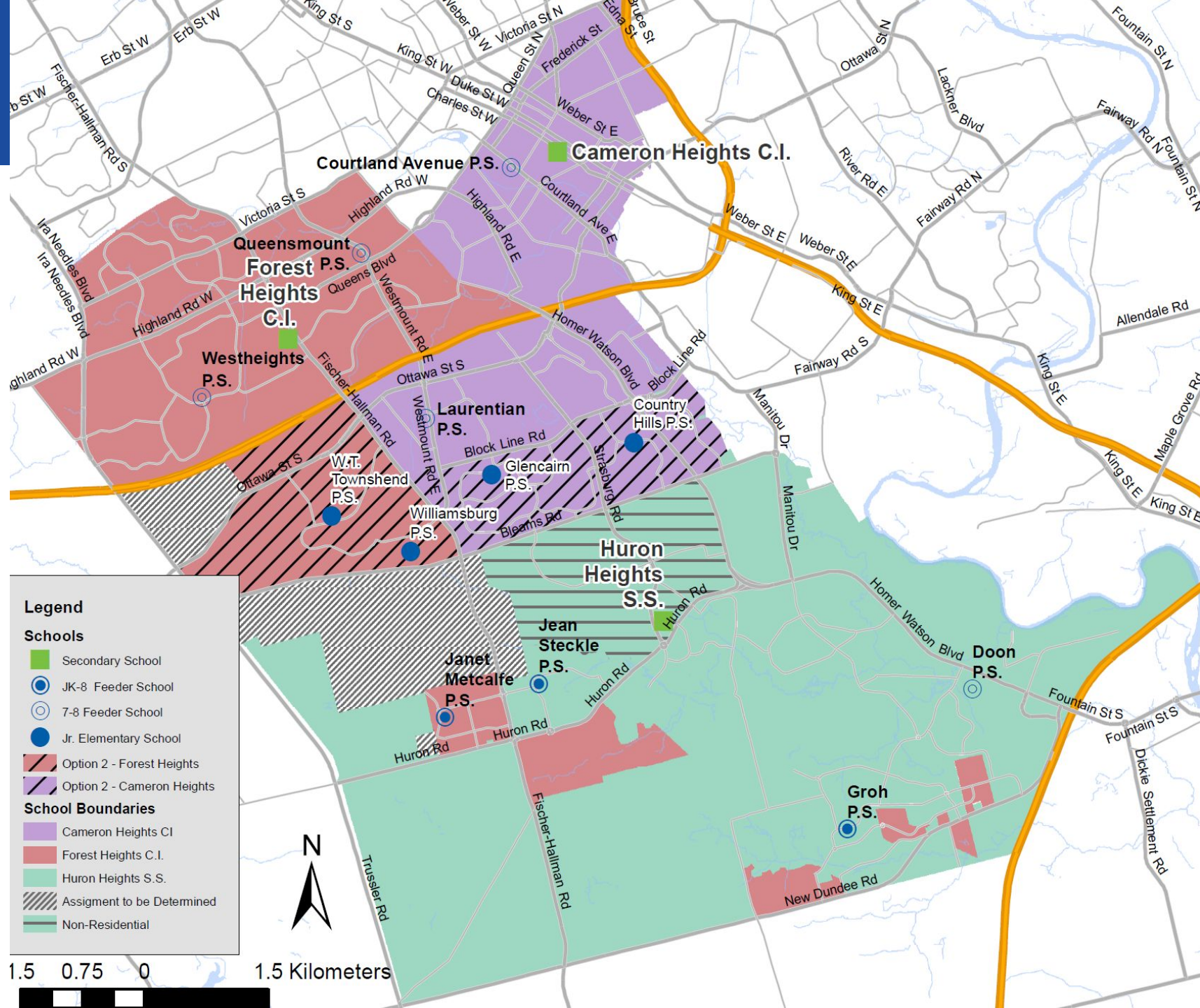
- Forest Heights (WTT,WLM)

- Option 2 eliminates feed to Cameron Heights

SCENARIO 2 MAP

Reassign Glencairn PS and Country Hills PS Areas from Huron Heights to Cameron Heights

Reassign W.T. Townshend PS and Williamsburg PS areas from Cameron Heights to Forest Heights



SCENARIO 2 ENROLMENT PROJECTIONS

Scenario 2 - Reassign Williamsburg and Townshend areas to Forest Heights and Country Hills/Glencairn areas to Cameron Heights

School	Grades	2018 OTG Plus Portable Capacity			Enrolment (ADE)/ Utilization (%)**					
		OTG	Port Cap*	Total Cap (OTG+Ports)	2018	2020	2022	2024	2026	2028
CHCI	9-12	1596	6	1722	1778	1760	1735	1756	1707	1672
					111%	110%	109%	110%	107%	105%
FHCI	9-12	1272	12	1524	1046	1579	1685	1777	1761	1715
					82%	124%	131%	135%	133%	128%
HHSS	9-12	1224	18	1602	1522	1481	1497	1525	1584	1611
					124%	121%	122%	125%	129%	132%

*Portable capacities are based on the current site conditions. In some cases, things like electrical upgrades may increase the amount of portables that can be accommodated at a given site. Portable capacities are provided for information purposes only and are subject to change.

**Utilization calculated using On-the-Ground (OTG) Capacity

SCENARIO 2 TRANSPORTATION IMPACTS

- No increase in transportation costs
- Bussing of Glencairn and Country Hills students to Cameron offset by the WT Townshend and Williamsburg students now walking to Forest Heights

ROUND TABLE





INNOVATING TOMORROW BY EDUCATING TODAY

51 Ardelt Avenue
Kitchener, ON N2C 2R5
tel: 519.570.0003
WEB: WRDSB.CA



[FACEBOOK.COM/WRDSB](https://facebook.com/wrdsb)



[TWITTER.COM/WRDSB](https://twitter.com/wrdsb)



[INSTAGRAM.COM/WR_DSB](https://instagram.com/wr_dsb)



[YOUTUBE.COM/WRDSBVIDEO](https://youtube.com/wrdsbvideo)