



# **SOUTHWEST KITCHENER SECONDARY BOUNDARY STUDY**

**Working Group Meeting #3**

**January 8, 2019**

# AGENDA (Revised)

## Introductions

## Review and Approval of Minutes

December 11, 2018 - Meeting #2

## Public Meeting #1 Date and Time (moved up on agenda)

## Review Draft Objectives

## New Development Area Assignment

## Communications Update

## Review Data Requests

Historical Boundary Map

Transportation Data

Feeder School Chart

Study Area Enrolment

## Round Table

# PUBLIC MEETING

**Date:** Thursday, February 7, 2019

**Time:** 7:00-9:00 PM

**Location:** Huron Heights SS

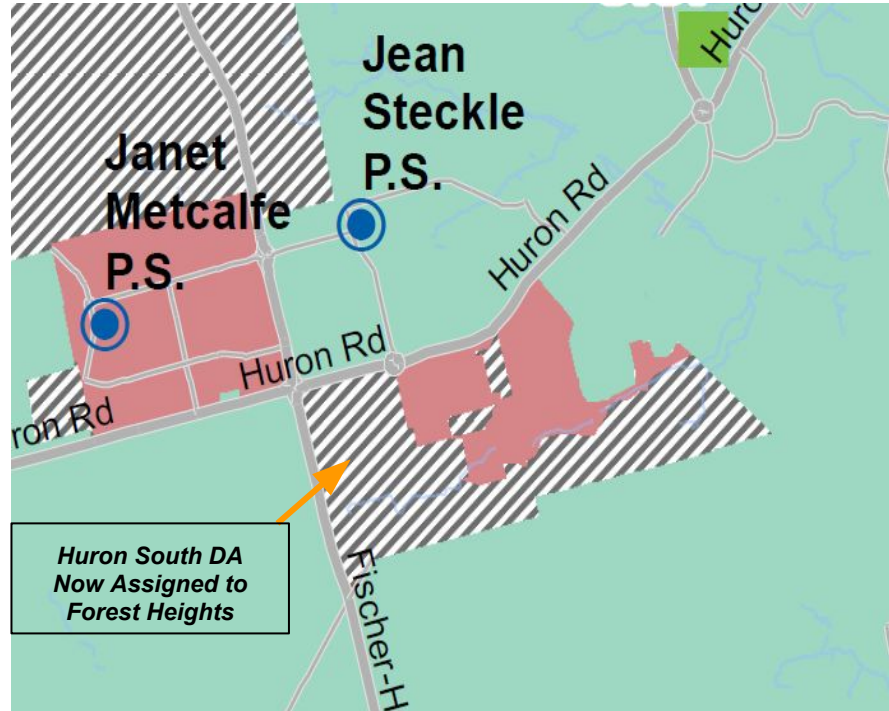
# SCHOOL COMMUNITY ISSUES (MENTI)



# DRAFT BOUNDARY STUDY OBJECTIVES

- efficiency of transportation (students within walking distance, bus routes)
- permanent capacity of schools and/or future construction requirements (e.g., site, program spaces, safety)
- impact on feeder and surrounding schools (i.e., Grade 8 students moving to secondary school)
- minimizing the impact on students where changes are proposed (e.g., consideration for grandfathering, phased implementation)

# NEW DEVELOPMENT AREA ASSIGNMENT - HURON SOUTH



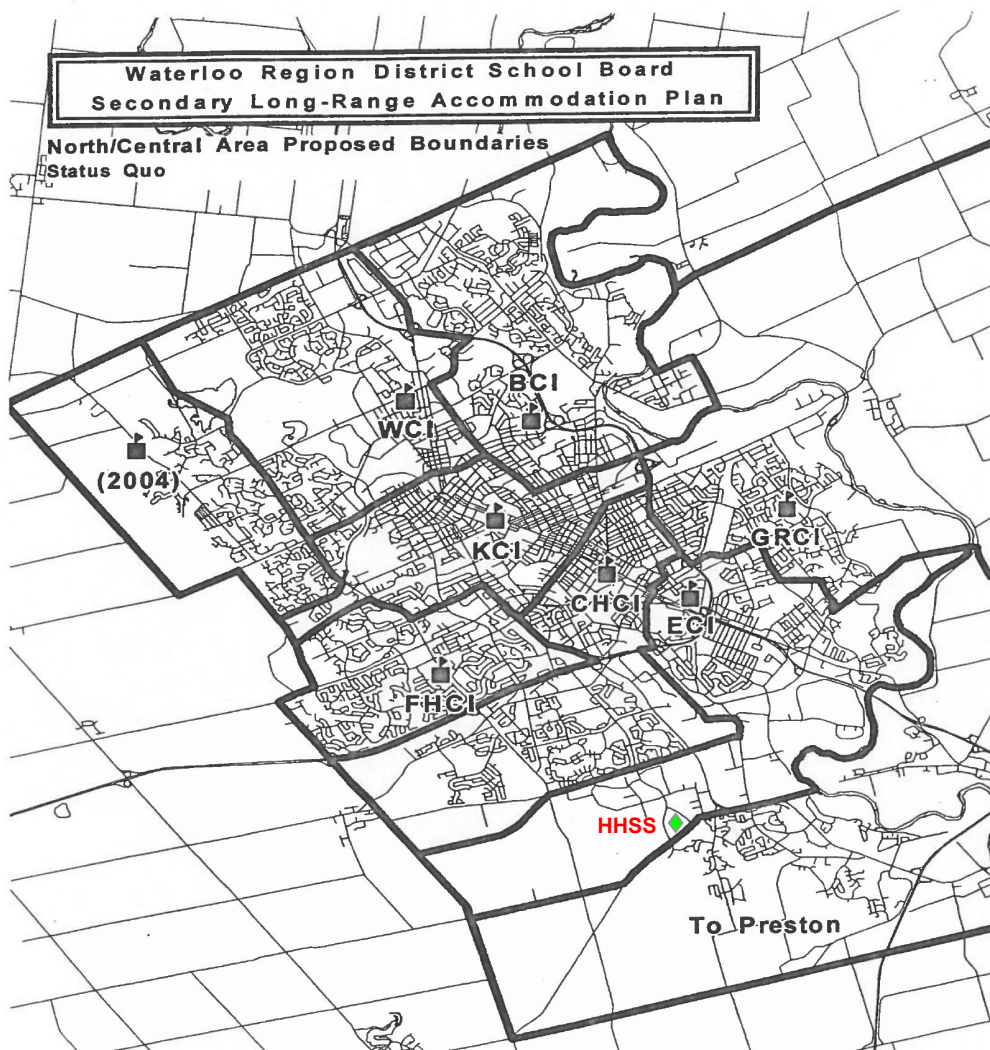
	2018 Capacity	Enrolment (ADE*)/Utilization (%) REVISED JAN 2019				
School	OTG	2020	2022	2024	2026	2028
CHCI	1596	1760	1735	1756	1707	1672
		110%	109%	110%	107%	105%
FHCI	1272	1115	1221	1348	1362	1355
		88%	96%	106%	107%	107%
HHSS	1224	1814	1909	1957	2002	2023
		148%	156%	160%	164%	165%

# COMMUNICATIONS UPDATE

- Principals from all JK-6 feeder schools associated with the Boundary Study will be informing School Councils of the review
- JK-6 feeder schools have been added to web post notifications
- Presentation to Cameron Heights staff scheduled for January 14, 2019



# HISTORICAL BOUNDARIES



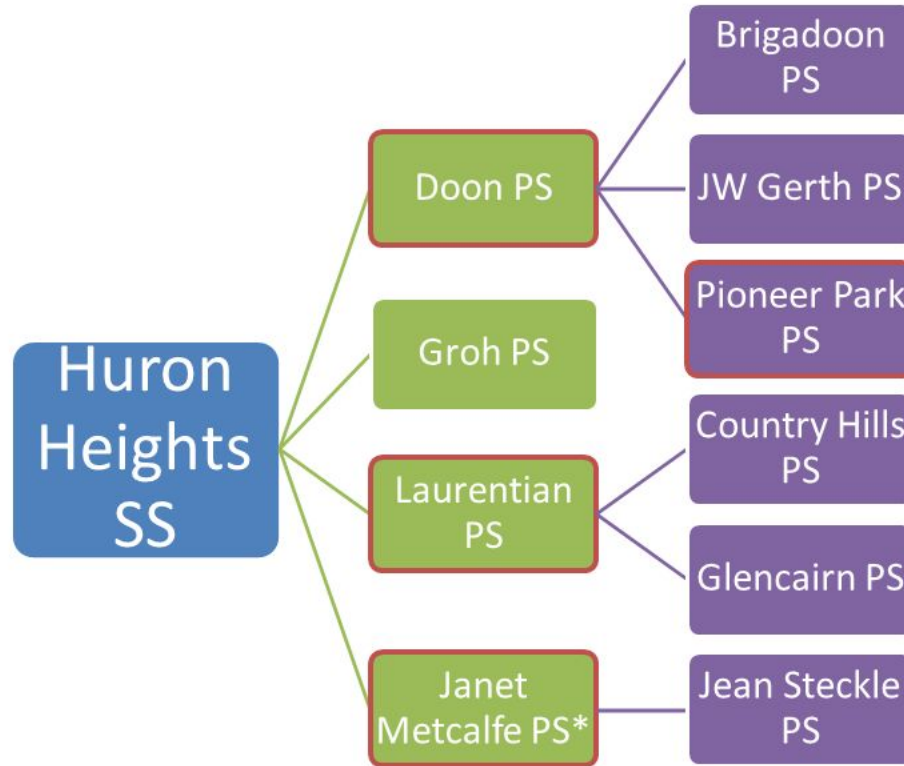


# TRANSPORTATION DATA

School	Number Eligible for Bus	Percent Eligible for Bus	Number of Buses
Cameron Heights	883	49%	23
Forest Heights	70	6%	8
Huron Heights	750	49%	27

\*Number of buses includes Special Education and Taxis

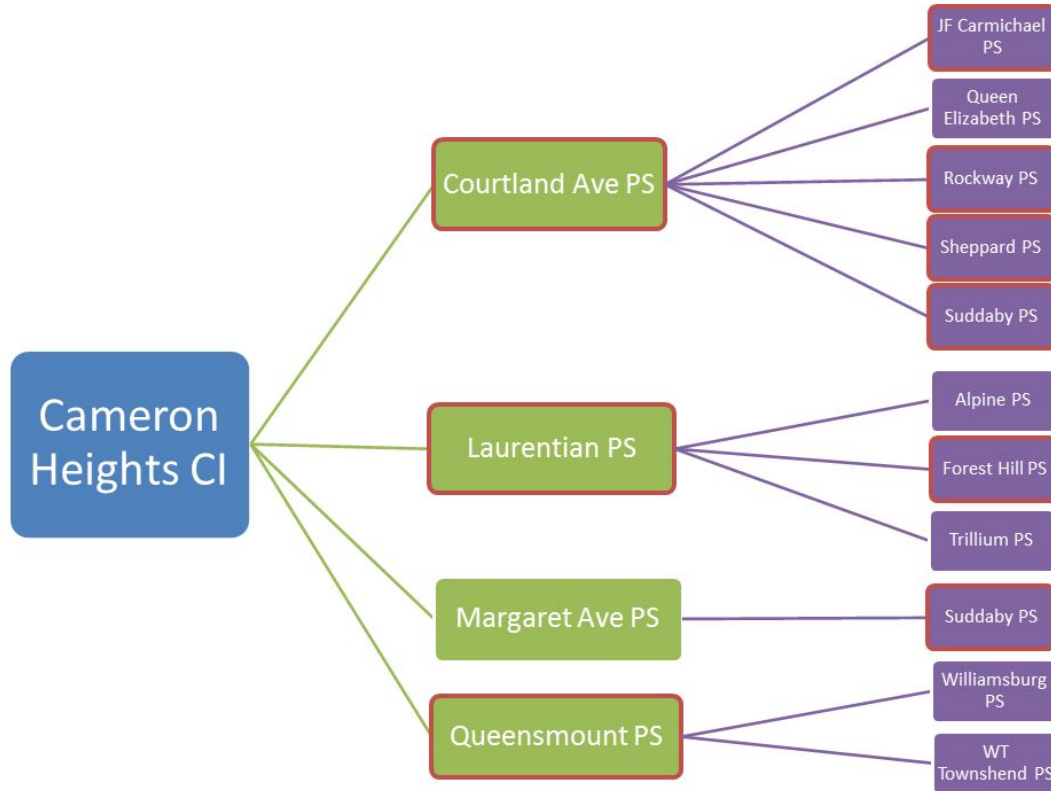
# FEEDER SCHOOL CHART



Note: Red outline indicates split feed where students feed to two different intermediate or secondary schools

\*Janet Metcalfe PS will have full JK-8 program in 2019/20

# FEEDER SCHOOL CHART



*Note: Red outline indicates split feed where students feed to two different intermediate or secondary schools*

*\*Janet Metcalfe PS will have full JK-8 program in 2019/20*

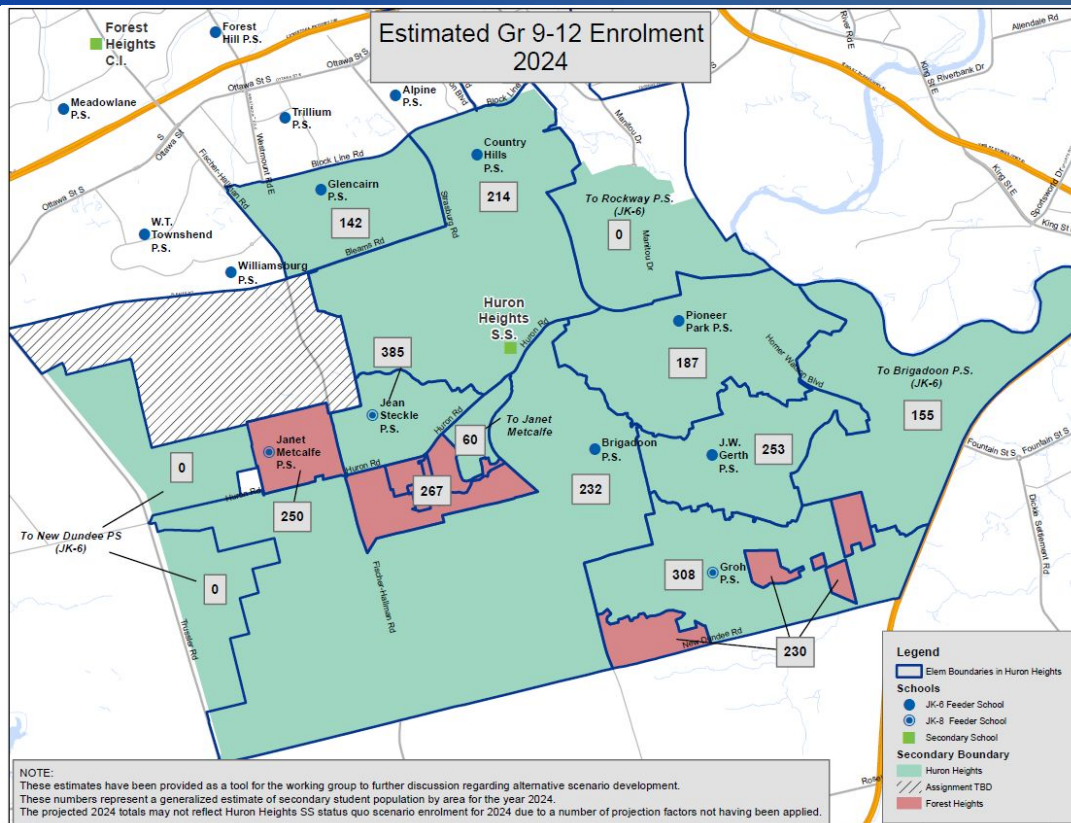
# FEEDER SCHOOL CHART



Note: Red outline indicates split feed where students feed to two different intermediate or secondary schools

\*Janet Metcalfe PS will have full JK-8 program in 2019/20

# STUDY AREA ENROLMENT



# ROUND TABLE







# INNOVATING TOMORROW BY EDUCATING TODAY

51 Ardelt Avenue  
Kitchener, ON N2C 2R5  
tel: 519.570.0003  
WEB: WRDSB.CA



[FACEBOOK.COM/WRDSB](https://www.facebook.com/WRDSB)



[TWITTER.COM/WRDSB](https://twitter.com/WRDSB)



[INSTAGRAM.COM/WR\\_DSB](https://www.instagram.com/WR_DSB)



[YOUTUBE.COM/WRDSBVIDEO](https://www.youtube.com/WRDSBVIDEO)