



SOUTHWEST KITCHENER SECONDARY BOUNDARY STUDY

Public Consultation Meeting

February 7, 2019

AGENDA

Introductions

Boundary Study Process/Overview

- **Study Objectives**
- **Status Quo (No change)**
- **Two Accommodation Options from Initial Report**
- **Two Accommodation Options from Working Group**

Feedback Opportunities

Next Steps

Questions

BOUNDARY STUDY

What is a Boundary Study?

A boundary study is a public process undertaken to change the attendance area (boundary) of one or more schools. The study is undertaken with the support of a Working Group.

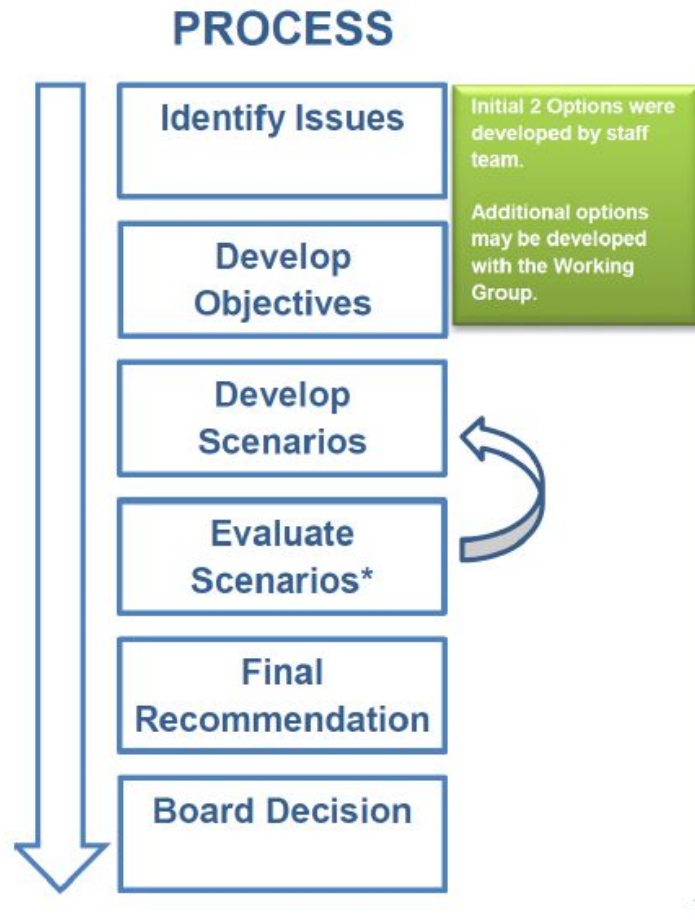
Working Group Membership

- Parents/Guardians
- Students
- Board Staff (SAWBs, Principals, Planning Staff)

DRAFT BOUNDARY STUDY OBJECTIVES

- efficiency of transportation (students within walking distance, bus routes)
- permanent capacity of schools and/or future construction requirements (e.g., site, program spaces, safety)
- impact on feeder and surrounding schools (i.e., Grade 8 students moving to secondary school)
- minimizing the impact on students where changes are proposed (e.g., consideration for grandfathering, phased implementation)

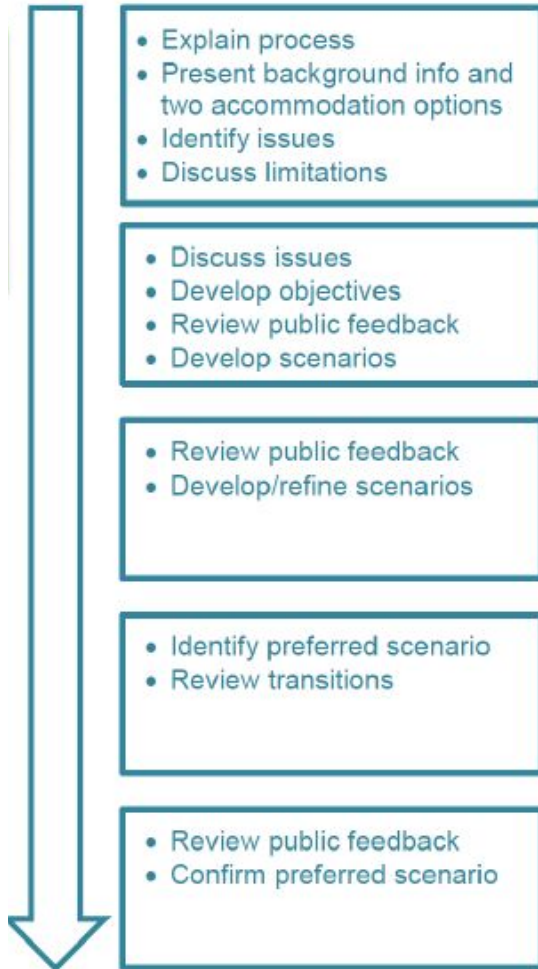
BOUNDARY STUDY PROCESS



- No changes for 2019
- Seeking a decision by June
- Implementation in September 2020
- Transition Committee would be established

BOUNDARY STUDY PROCESS

WORKING GROUP



- Working group has met four times and will continue to meet
- There are 4 scenarios so far, 2 from the initial report and 2 from the working group
- No scenario has been identified for recommendation
- The next phase of scenario development and refinement will be informed by the feedback we have gathered
- Grandparenting is a consideration

BOUNDARY STUDY PROCESS

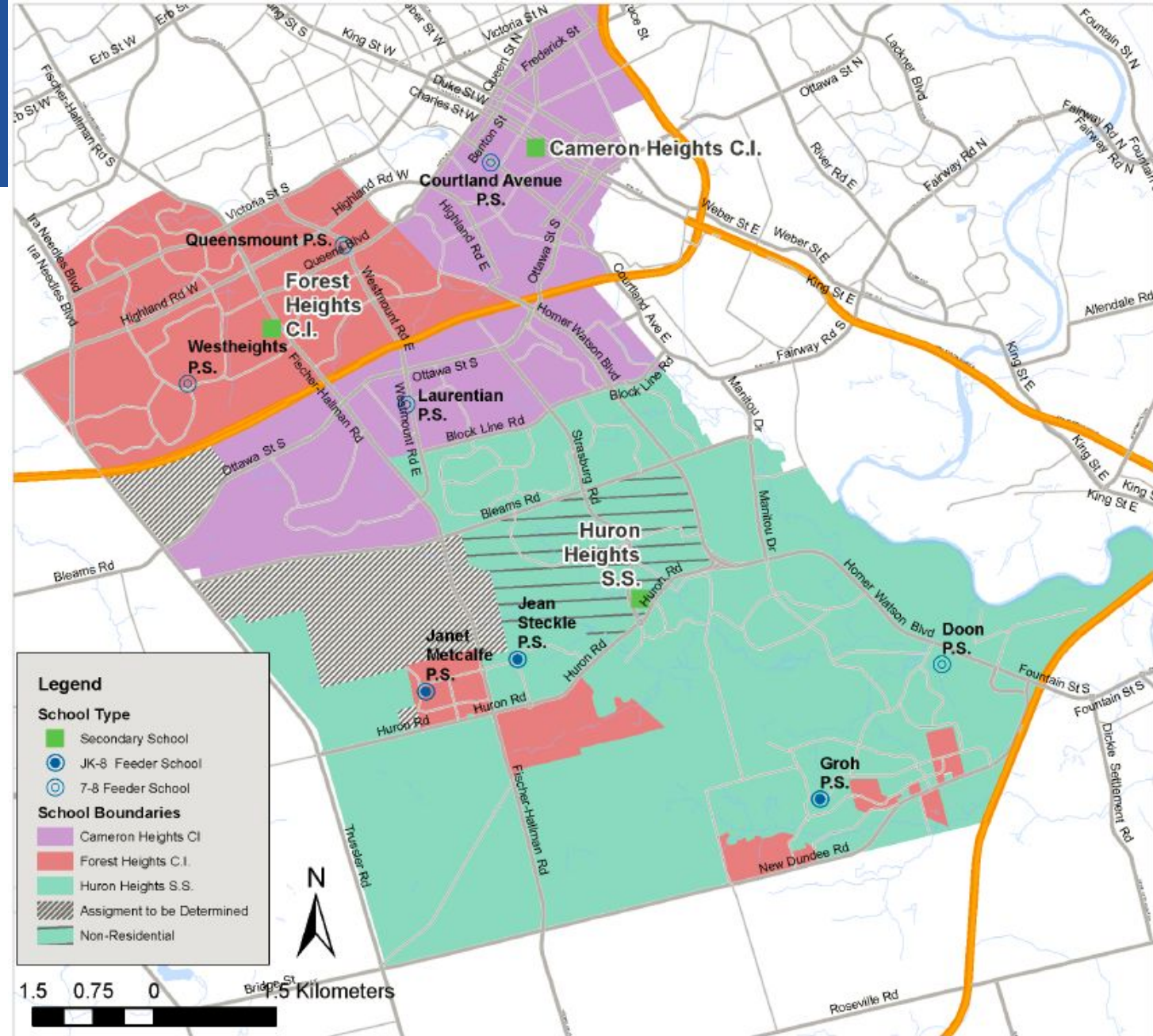
PUBLIC MEETINGS

- Explain process
- Review background information and data
- Review initial options/scenarios
- Receive feedback

- Present preferred scenario(s)
- Receive feedback

- Working group will review feedback from tonight as well as additional scenarios requested at the last meeting
- Ideally plan to have a second public meeting after the March break
- Staff will present the final report and working group recommendation to Trustees for a decision (May/June)

STUDY AREA



STATUS QUO (NO CHANGE) ENROLMENT PROJECTIONS

School	Grades	2018 OTG Plus Portable Capacity			Enrolment (ADE)/ Utilization (%)**					
		OTG	Port Cap*	Total Cap (OTG+Ports)	2018	2020	2022	2024	2026	2028
CHCI	9-12	1596	6	1722	1778	1760	1735	1756	1707	1672
					111%	110%	109%	110%	107%	105%
FHCI	9-12	1272	12	1524	1046	1115	1221	1348	1362	1355
					82%	88%	96%	106%	107%	107%
HHSS	9-12	1224	18	1602	1522	1814	1909	1957	2002	2023
					124%	148%	156%	160%	164%	165%

*Portable capacities are based on the current site conditions. In some cases, things like electrical upgrades may increase the amount of portables that can be accommodated at a given site. Portable capacities are provided for information purposes only and are subject to change.

**Utilization calculated using On-the-Ground (OTG) Capacity



HURON HEIGHTS CURRENT SITUATION

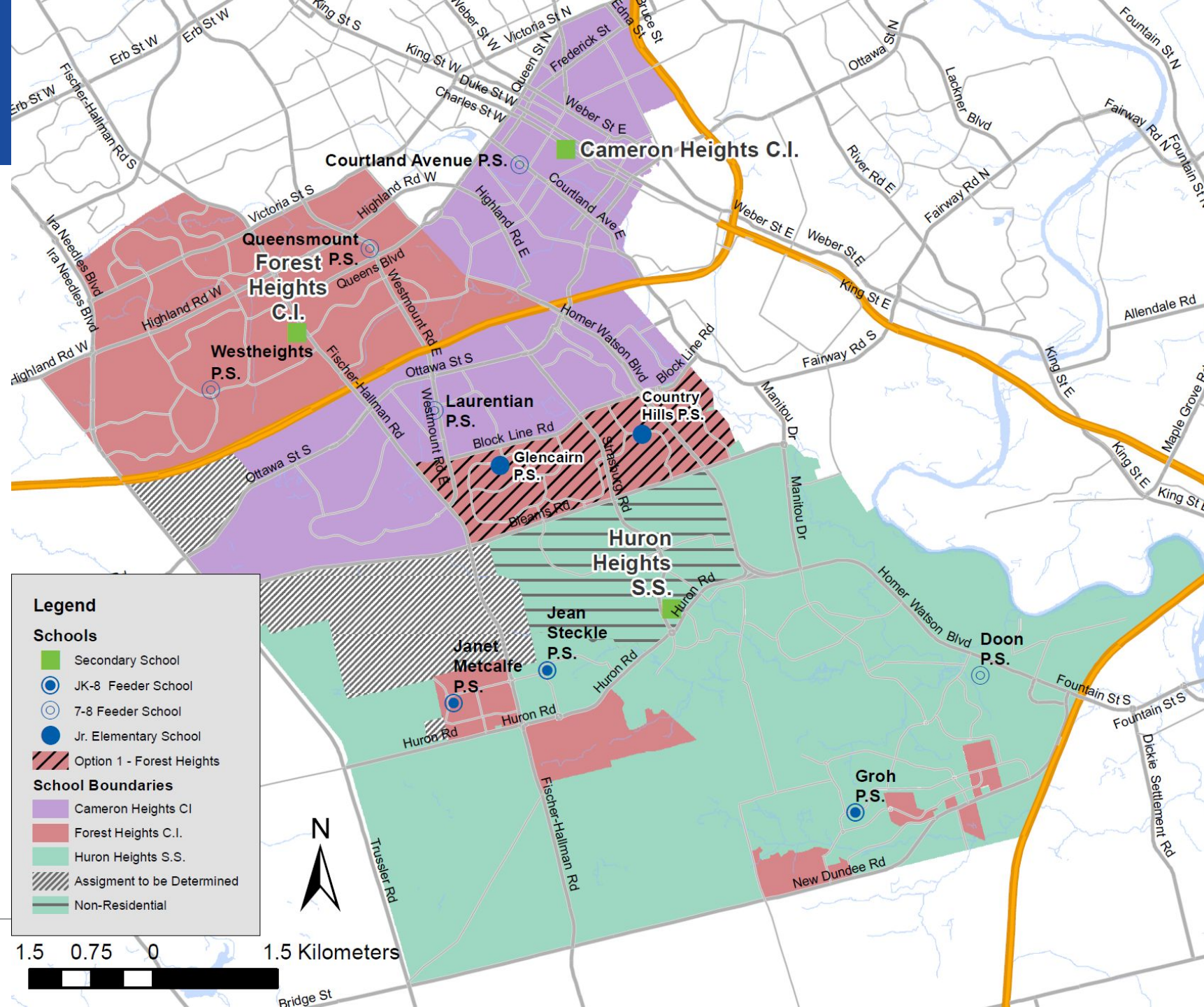
- Huron Heights Secondary School's utilization is nearly 125% in 2018
- A number of operational changes have been made to accommodate the current enrolment (1522) at Huron Heights Secondary School
 - Six Period Day (double lunch)
 - Doon South and Mattamy Wildflowers Development Areas assigned to Forest Heights Collegiate Institute
 - placement of two additional portables for new total of 12

IMPLICATIONS OF THE STATUS QUO

- Continued enrolment imbalance in the study area
- Utilizations up to 165% at Huron Heights Secondary school
- Could exceed maximum allowable portable classrooms at Huron Heights
- There is available school capacity and site space for portables at Forest Heights Collegiate Institute
- Specialty rooms (e.g. Science Labs and Gymnasiums) fully utilized at Huron Heights Secondary School
- Specialty Rooms are available at Forest Heights and Cameron Heights Collegiate Institute

SCENARIO 1 MAP

Reassign Glencairn PS and Country Hills PS Areas from Huron Heights to Forest Heights



SCENARIO 1 ENROLMENT PROJECTIONS

Scenario 1 - Reassign Country Hills and Glencairn to Forest Heights

School	Grades	2018 OTG Plus Portable Capacity			Enrolment (ADE)/ Utilization (%)**					
		OTG	Port Cap*	Total Cap (OTG+Ports)	2018	2020	2022	2024	2026	2028
CHCI	9-12	1596	6	1722	1778	1760	1735	1756	1707	1672
					111%	110%	109%	110%	107%	105%
FHCI	9-12	1272	12	1524	1046	1455	1634	1768	1768	1760
					82%	114%	128%	138%	138%	138%
HHSS	9-12	1224	18	1602	1522	1481	1497	1525	1584	1611
					124%	121%	122%	125%	129%	132%

*Portable capacities are based on the current site conditions. In some cases, things like electrical upgrades may increase the amount of portables that can be accommodated at a given site. Portable capacities are provided for information purposes only and are subject to change.

**Utilization calculated using On-the-Ground (OTG) Capacity

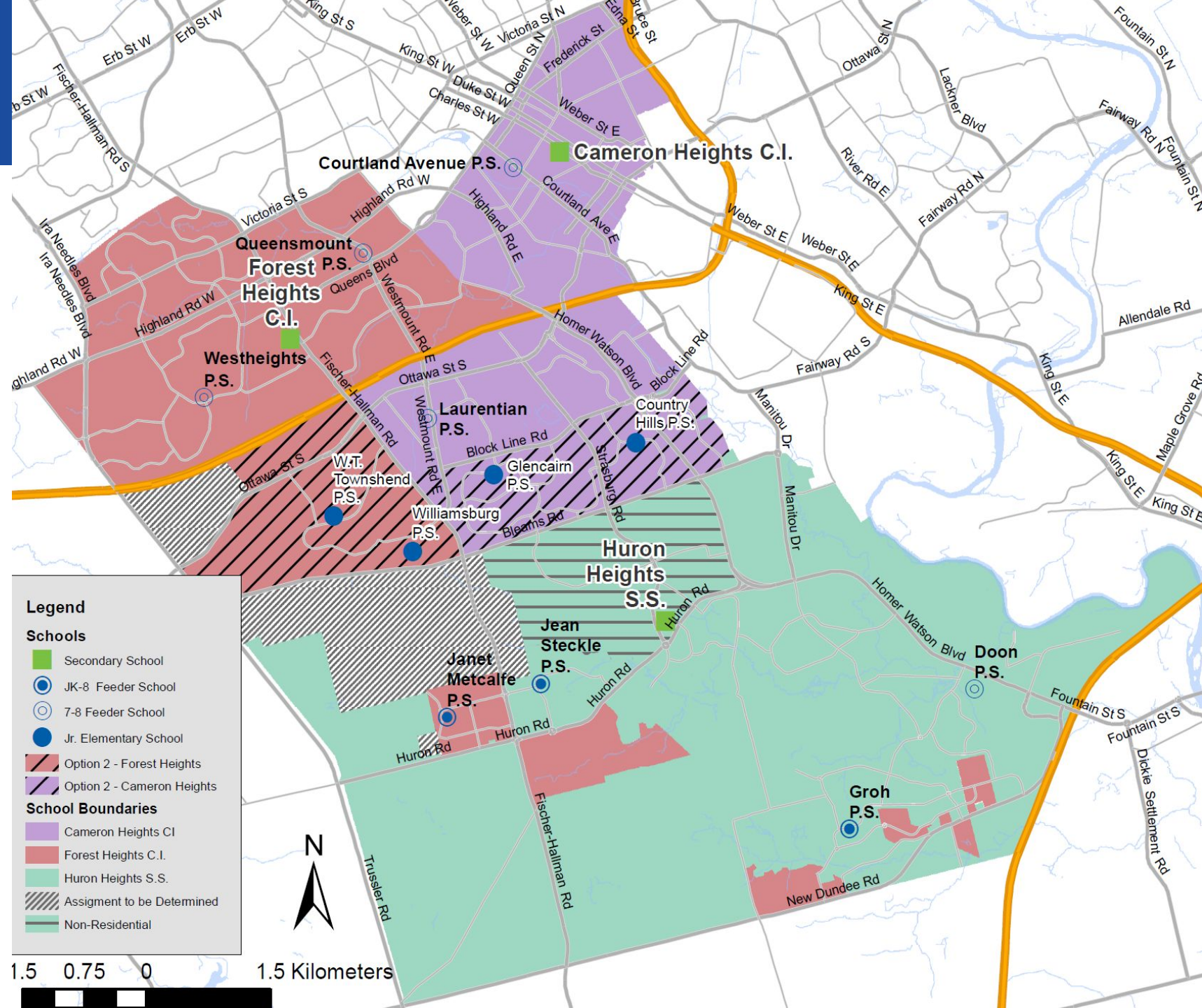
SCENARIO 1 TRANSPORTATION IMPACTS

- Majority of Glencairn and Country Hills not within walking distance of Forest Heights
- Five additional regular school buses required at cost of ***\$210K per year***
- Infrastructure upgrades may be required to accommodate extra buses at Forest Heights

SCENARIO 2 MAP

Reassign Glencairn PS and Country Hills PS Areas from Huron Heights to Cameron Heights

Reassign W.T. Townshend PS and Williamsburg PS areas from Cameron Heights to Forest Heights



SCENARIO 2 ENROLMENT PROJECTIONS

Scenario 2 - Reassign Williamsburg and Townshend areas to Forest Heights and Country Hills/Glencairn areas to Cameron Heights

School	Grades	2018 OTG Plus Portable Capacity			Enrolment (ADE)/ Utilization (%)**					
		OTG	Port Cap*	Total Cap (OTG+Ports)	2018	2020	2022	2024	2026	2028
CHCI	9-12	1596	6	1722	1778	1634	1688	1747	1714	1715
					111%	102%	106%	109%	107%	107%
FHCI	9-12	1272	12	1524	1046	1579	1685	1777	1761	1715
					82%	124%	132%	140%	138%	134%
HHSS	9-12	1224	18	1602	1522	1481	1497	1525	1584	1611
					124%	121%	122%	125%	129%	132%

*Portable capacities are based on the current site conditions. In some cases, things like electrical upgrades may increase the amount of portables that can be accommodated at a given site. Portable capacities are provided for information purposes only and are subject to change.

**Utilization calculated using On-the-Ground (OTG) Capacity

SCENARIO 2 TRANSPORTATION IMPACTS

- No increase in transportation costs
- Bussing of Glencairn and Country Hills students to Cameron offset by the WT Townshend and Williamsburg students being within walking distance to Forest Heights

OPTION 1 AND 2 FEEDER SCHOOL IMPLICATIONS

LAURENTIAN PS

STATUS QUO	OPTION 1	OPTION 2
<ul style="list-style-type: none">• Cameron Heights• Huron Heights (GCP, COH)• Forest Heights (DA)	<ul style="list-style-type: none">• Cameron Heights• Forest Heights (GCP, COH, DA)	<ul style="list-style-type: none">• Cameron Heights (GCP, COH)• Forest Heights (DA,ALP)

- Both Option 1 and 2 eliminate feed to Huron Heights

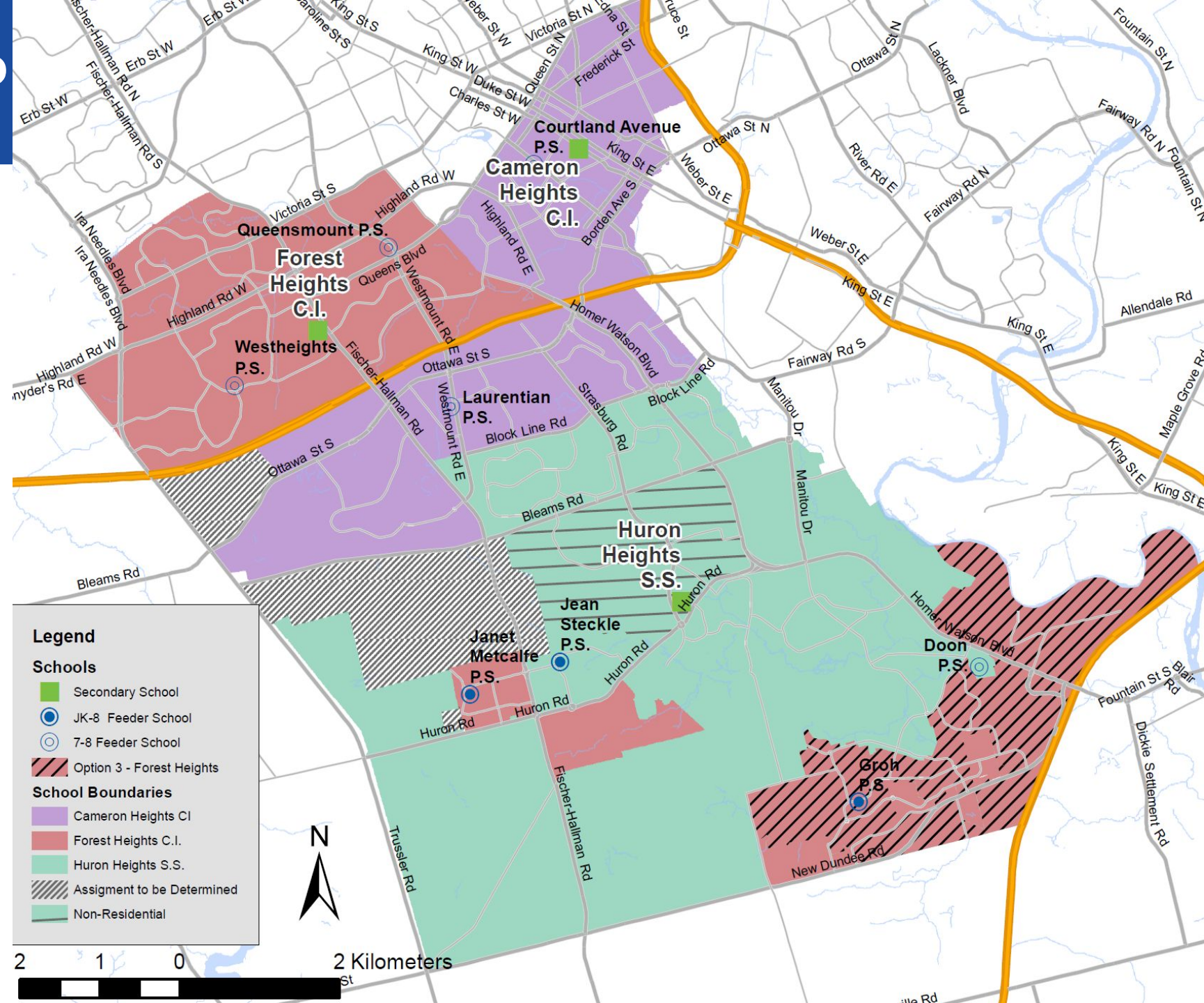
QUEENSMOUNT PS

STATUS QUO	OPTION 1	OPTION 2
<ul style="list-style-type: none">• Cameron Heights (WTT, WLM)• Forest Heights	<ul style="list-style-type: none">• Cameron Heights (WTT,WLM)• Forest Heights	<ul style="list-style-type: none">• Forest Heights (WTT,WLM)

- Option 2 eliminates feed to Cameron Heights

SCENARIO 3 MAP

Reassign Groh PS and Brigadoon East Areas from Huron Heights to Forest Heights



SCENARIO 3 ENROLMENT PROJECTIONS

Scenario 3 - Reassign Groh and Brigadoon East Areas to Forest Heights

School	Grades	2018 OTG Plus Portable Capacity			Enrolment (ADE)/ Utilization (%)**					
		OTG	Port Cap*	Total Cap (OTG+Ports)	2018	2020	2022	2024	2026	2028
CHCI	9-12	1596	6	1722	1778	1760	1735	1756	1707	1672
					111%	110%	109%	110%	107%	105%
FHCI	9-12	1272	12	1524	1046	1456	1630	1787	1798	1808
					82%	118%	132%	145%	146%	147%
HHSS	9-12	1224	18	1602	1522	1462	1478	1488	1533	1532
					124%	119%	121%	122%	125%	125%

*Portable capacities are based on the current site conditions. In some cases, things like electrical upgrades may increase the amount of portables that can be accommodated at a given site. Portable capacities are provided for information purposes only and are subject to change.

**Utilization calculated using On-the-Ground (OTG) Capacity

SCENARIO 3 IMPACTS

Split Feed

- Doon PS continues to be split between HHSS and FHCI (no reduction)

Development Area

- Groh PS community shares a common secondary school boundary with new development in DA

Program

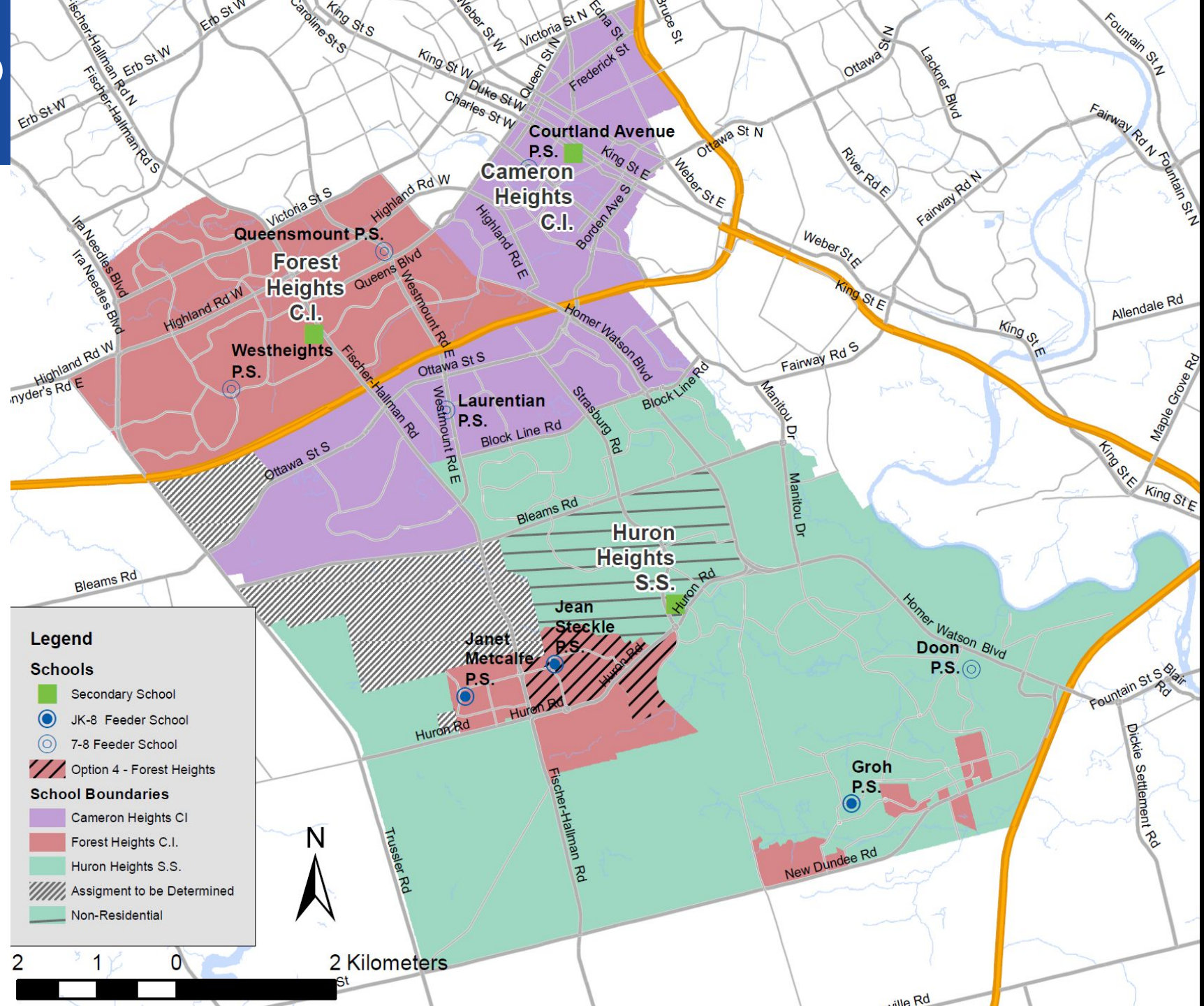
- Forest Heights CI offers Extended French (Groh PS and Doon PS offer French Immersion)

SCENARIO 3 TRANSPORTATION IMPACTS

- All students would be transported to Forest Heights
- Area is currently transported to Huron Heights
- Due to routing and bell times, not many efficiencies found and five additional regular school buses required at cost of ***\$210K per year***
- Infrastructure upgrades may be required to accommodate extra buses at Forest Heights

SCENARIO 4 MAP

Reassign Jean Steckle and Huron Woods Areas from Huron Heights to Forest Heights



SCENARIO 4 ENROLMENT PROJECTIONS

Scenario 4 - Reassign Jean Steckle and Huron Woods Area to Forest Heights

School	Grades	2018 OTG Plus Portable Capacity			Enrolment (ADE)/ Utilization (%)**					
		OTG	Port Cap*	Total Cap (OTG+Ports)	2018	2020	2022	2024	2026	2028
CHCI	9-12	1596	6	1722	1778	1760	1735	1756	1707	1672
					111%	110%	109%	110%	107%	105%
FHCI	9-12	1272	12	1524	1046	1487	1569	1696	1735	1742
					82%	117%	123%	133%	136%	137%
HHSS	9-12	1224	18	1602	1522	1436	1558	1588	1593	1594
					124%	117%	127%	130%	130%	130%

*Portable capacities are based on the current site conditions. In some cases, things like electrical upgrades may increase the amount of portables that can be accommodated at a given site. Portable capacities are provided for information purposes only and are subject to change.

**Utilization calculated using On-the-Ground (OTG) Capacity

SCENARIO 4 IMPACTS

Split Feed

- Janet Metcalfe PS split feed between HHSS and FHCI eliminated if all students are directed to FHCI.

Development Area

- Shared boundary for new development in Huron South DAs, Mattamy Wildflowers DA (Janet Metcalfe's secondary students) and Jean Steckle PS

Program

- Forest Heights CI offers Extended French (Jean Steckle PS offers French Immersion)

SCENARIO 4 TRANSPORTATION IMPACTS

- All students would be transported to Forest Heights
- Area is currently within walking distance of Huron Heights
- Five additional regular school buses required at cost of ***\$210K per year***
- Infrastructure upgrades may be required to accommodate extra buses at Forest Heights

COMMUNICATION

- Staff Meetings have been held at each of the three study area schools
- boundaryfeedback@wrdsb.ca
- web page posts have been directed to study area schools as well as all elementary feeder schools
- A boundary study webpage has been published - <https://www.wrdsb.ca/planning/southwest-kitchener-secondary-boundary-study/>

NEXT STEPS

- Continue meeting with the Boundary Study Working Group and identify and analyze scenarios, incorporating the feedback we hear tonight
- Continue to receive and respond to feedback online
- Identify a recommended scenario
- Bring recommended scenario back to the public for feedback

QUESTIONS

Please line up at the Microphone to ask your questions.

To ensure as many voices are heard as possible, you are limited to one question and one follow up.

Once you have received your answer please move to the back of the line if you would like to ask another question.

We would like to move to the Open House at 8pm. Please note staff can continue to receive feedback and answer questions during the Open House.





www.wrdsb.ca/planning
boundaryfeedback@wrdsb.ca

INNOVATING TOMORROW BY EDUCATING TODAY

51 Ardelt Avenue
Kitchener, ON N2C 2R5
tel: 519.570.0003
WEB: WRDSB.CA

