

The background of the slide is a close-up photograph of two hands holding a green pencil, drawing on a piece of paper. The image is overlaid with a semi-transparent blue filter. The text "SOUTHWEST KITCHENER SECONDARY BOUNDARY STUDY" is written in large, white, bold, sans-serif capital letters across the middle of the image.

# SOUTHWEST KITCHENER SECONDARY BOUNDARY STUDY

Working Group Meeting #2

December 11, 2018

# AGENDA

## Introductions

## Review of Minutes, summary of last meeting

## Approval of Minutes (November 27 Kick Off Meeting)

## Break Out Activity - Identifying Issues at Your School

- Issues identification
- Objective development

## School Profiles - Facility Overview of Study Area Schools

### Option 1

- Grandparenting impacts
- Transportation Implications, Walking Webs
- Temporary Accommodation Needs (Portables)
- Feeder school implications

### Option 2

- Grandparenting impacts
- Transportation Implications, Walking Webs
- Temporary Accommodation Needs (Portables)
- Feeder school implications

## Round Table

# BREAK OUT ACTIVITY

## Identify issues at your school (5-10 min)

- Form a group with your school representatives (Parents, Students, Principals, Superintendents)
- Start to identify issues facing your school
  - Think about the question, *why are we here?*
- Each group will present their issues to the larger committee

# BREAK OUT ACTIVITY

<https://www.mentimeter.com/s/592133eaf7a38c079d5149a4876c761c/a4a96895d4c8>

# DRAFT OBJECTIVES

Based on the issues identified, are there any other objectives to add to the study?

- Efficiency of transportation (students within walking distance, bus routes)
- Permanent capacity of schools and/or future construction requirements (e.g., site, program spaces, safety)
- Impact on feeder and surrounding schools (i.e., Grade 8 students moving to secondary school)
- Minimizing the impact on students where changes are proposed (e.g., consideration for grandfathering, phased implementation)

# SCHOOL PROFILES – HURON HEIGHTS



**WATERLOO REGION  
DISTRICT SCHOOL BOARD**

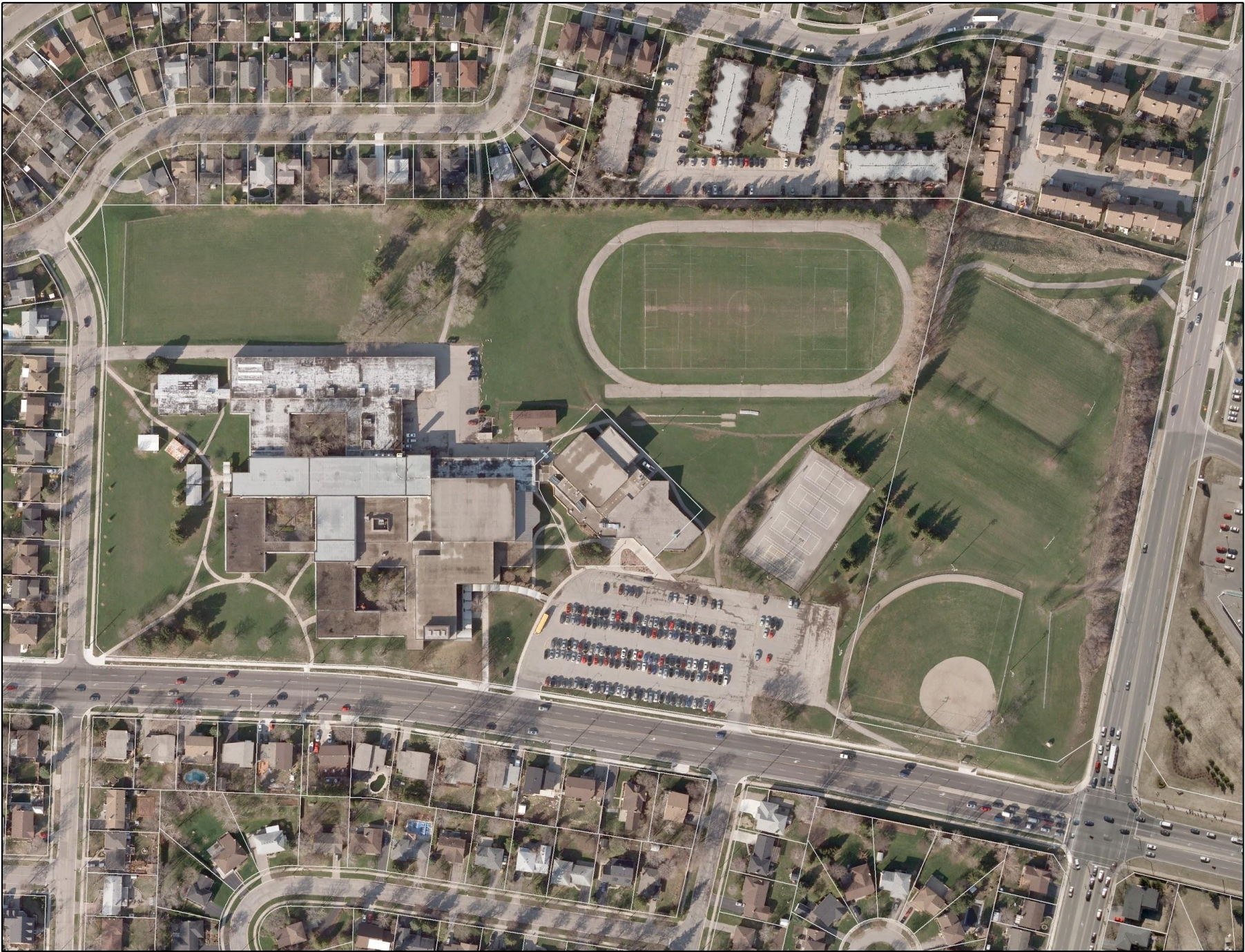
# SCHOOL PROFILES – HURON HEIGHTS

Year Built	2006	Site Size (ac)	19.70 ac
Age	12	Acres per Pupil Place (including City parcel)	0.016
On-the-ground Capacity (OTG)	1224	Building Size (Gross Floor Area in m <sup>2</sup> )	14,262.6
Facility Condition Index (FCI)/ Assessment Year	0% /2015	Gross Floor Area per Pupil Place	11.652 m <sup>2</sup>
Portable Classrooms / Capacity	12/ 252		

# SCHOOL PROFILES – HURON HEIGHTS

## Specialized Room Summary

Science Labs	Gyms	Music	Drama	Art	Computer Lab	Tech/Shop	Library (Gross Floor Area ft <sup>2</sup> )	City Amenities
6	3	2	1	2	3	3	4536.7	N/A



# SCHOOL PROFILES – FOREST HEIGHTS



# SCHOOL PROFILES – FOREST HEIGHTS

Year Built	1964	Site Size (ac)	24.94 ac
Age	54	Acres per Pupil Place (including City parcel)	0.020
On-the-ground Capacity (OTG)	1272	Building Size (Gross Floor Area in m <sup>2</sup> )	17,893.3
Facility Condition Index (FCI)/ Assessment Year	22% / 2012	Gross Floor Area per Pupil Place	14.067 m <sup>2</sup>
Portable Classrooms / Capacity	0		

# SCHOOL PROFILES – FOREST HEIGHTS

Science Labs	Gyms	Music	Drama	Art	Computer Lab	Tech/ Shop	Library (Gross Floor Area ft <sup>2</sup> )	City Amenities
8	3	1	1	2	2	2	3184.7	Library and Pool

## Additional Specialized Room Notes

In addition to the three gyms there is a weight room and a fitness room / dance studio in the lower level. The school enjoys teachable outdoor spaces in the three courtyards. The cafetorium benefits from a stage.

# SCHOOL PROFILES – CAMERON HEIGHTS



# SCHOOL PROFILES – CAMERON HEIGHTS

Year Built	1969	Site Size (ac)	24.09ac*
Age	49	Acres per Pupil Place (including City parcel)	0.015
On-the-ground Capacity (OTG)	1596	Building Size (Gross Floor Area in m <sup>2</sup> )	22,529.45
Facility Condition Index (FCI)/ Assessment Year	36% / 2012	Gross Floor Area per Pupil Place	14.116 m <sup>2</sup>
Portable Classrooms / Capacity	7/ 147		

\*7.56 acres (Board owned) plus 16.5 acres (City of Kitchener parcel).

# SCHOOL PROFILES – CAMERON HEIGHTS

## Specialized Room Summary

Science Labs	Gyms	Music	Drama	Art	Computer Lab	Tech/Shop	Library (Gross Floor Area ft <sup>2</sup> )	City Amenities
9	3	1	1	1	6	7	5001.8	Swimming Pool

## Additional Specialized Room Notes

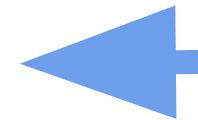
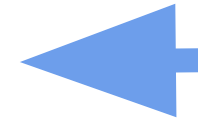
In addition to the three gyms, the school enjoys fitness and weight rooms in lower level. The cafetorium benefits from a stage. There are actually 8 Tech/Shops but one is used for special education purposes.

[illegible]

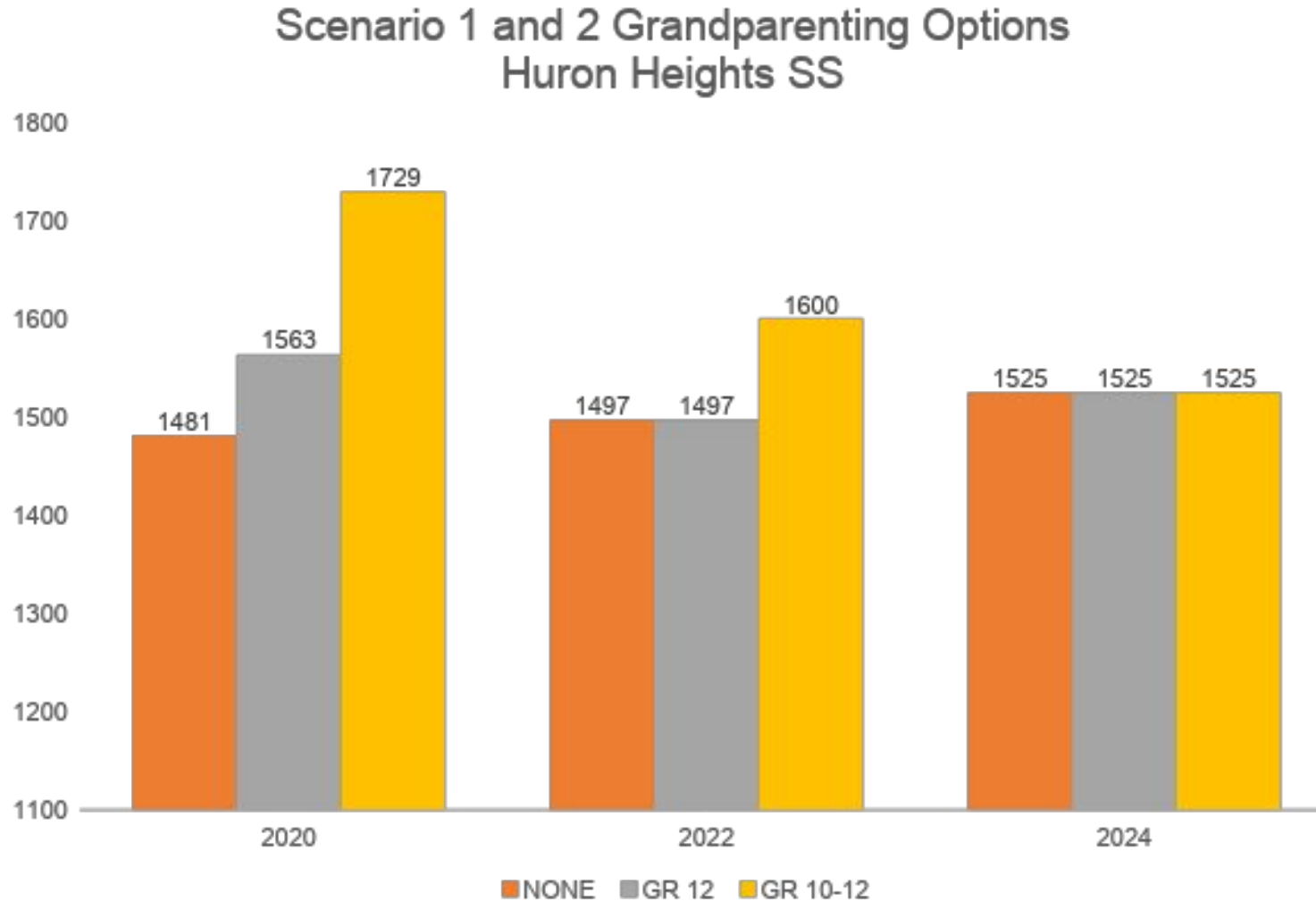
# SCENARIO 1 ENROLMENT PROJECTIONS

**Table 4 - Scenario 1 Enrolment Projections**

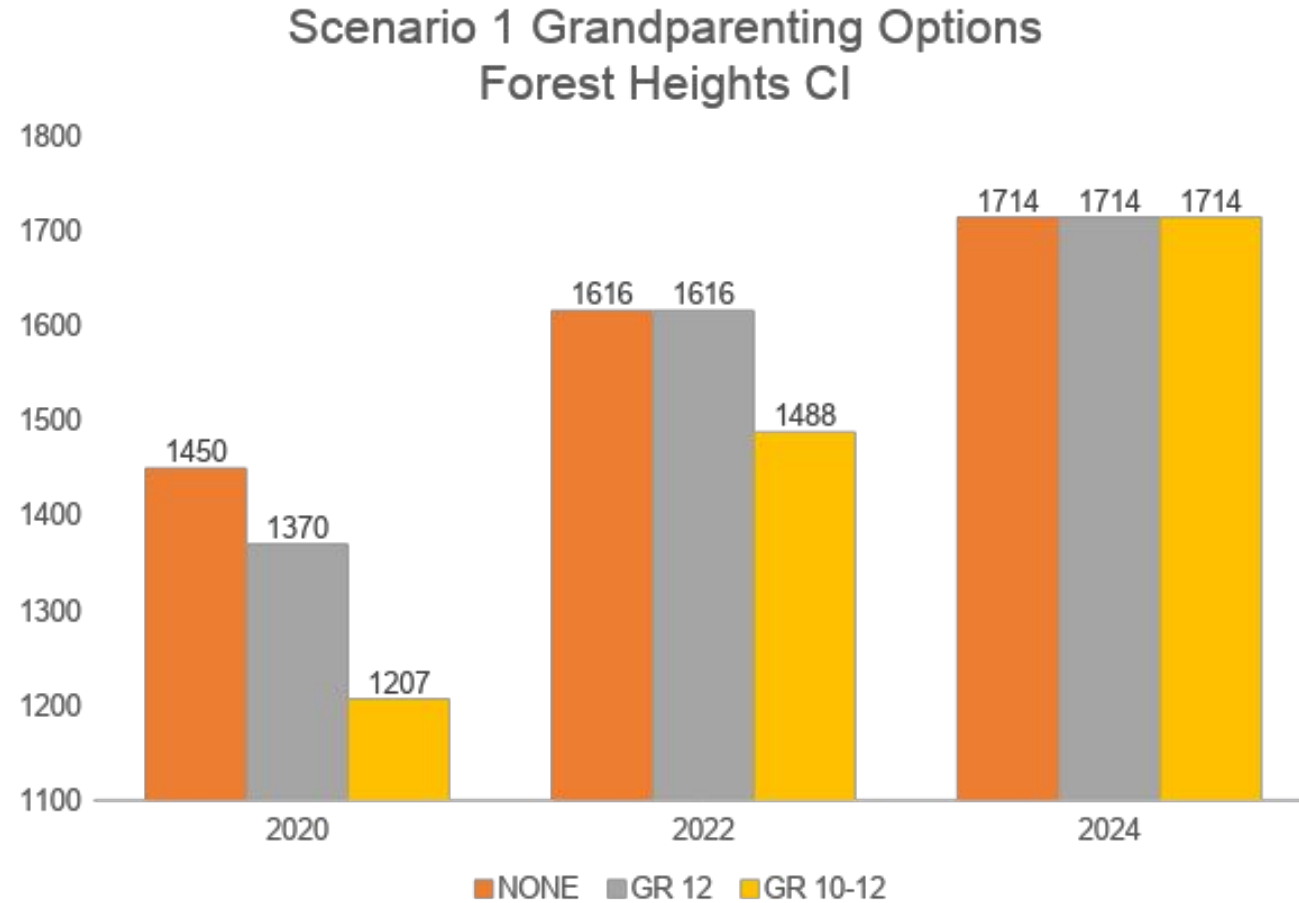
School	Grades	2018 Capacity		Enrolment (ADE*)/ Utilization (%)					
		OTG	Portables	2018	2020	2022	2024	2026	2028
CHCI	9-12	1596	6	1778	1760	1735	1756	1707	1672
				111%	110%	109%	110%	107%	105%
FHCI	9-12	1272	0	1046	1450	1616	1714	1694	1675
				82%	114%	127%	135%	133%	132%
HHSS	9-12	1224	12	1522	1481	1497	1525	1584	1611
				124%	121%	122%	125%	129%	132%



# SCENARIO 1 GRANDPARENTING IMPACTS



# SCENARIO 1 GRANDPARENTING IMPACTS



# WALKING WEBS

[https://drive.google.com/drive/folders/1kkdBQ\\_enP0xbI7fCGsRZ2J3k86qepLMG](https://drive.google.com/drive/folders/1kkdBQ_enP0xbI7fCGsRZ2J3k86qepLMG)

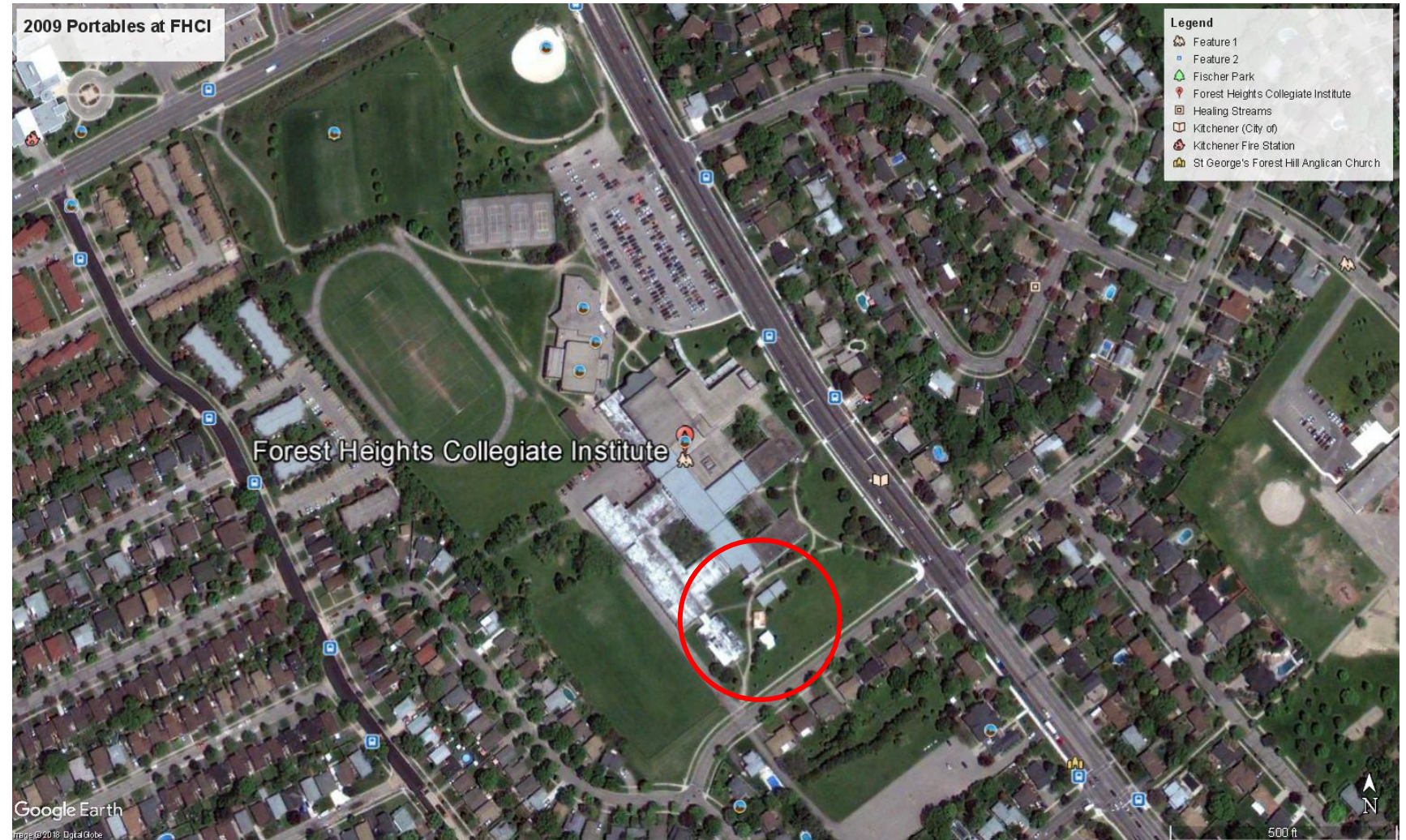
# SCENARIO 1 TRANSPORTATION IMPACTS

- Majority of Glencairn and Country Hills not within walking distance of Forest Heights
- Five additional regular school buses required at cost of ***\$210K per year***

# SCENARIO 1 TEMPORARY ACCOMMODATION AT FOREST HEIGHTS CI

in 2009 Forest Heights CI hosted a 6-pak as well as 4 portable classrooms for a total of 10 classrooms. We believe the school can accommodate an even greater number of portables given the large site and we are working with Facility Services to develop a placement plan.

10 portables adds 210 pupil places to FHCI.



# FEEDER SCHOOL IMPLICATIONS

## LAURENTIAN PS

### STATUS QUO

- Cameron Heights
- Huron Heights (GCP, COH)
- Forest Heights (DA)

### OPTION 1

- Cameron Heights
- Forest Heights (GCP, COH, DA)

### OPTION 2

- Cameron Heights (GCP, COH)
- Forest Heights (DA,ALP)

- Both Option 1 and 2 eliminate feed to Huron Heights

## QUEENSMOUNT PS

### STATUS QUO

- Cameron Heights (WTT, WLM)
- Forest Heights

### OPTION 1

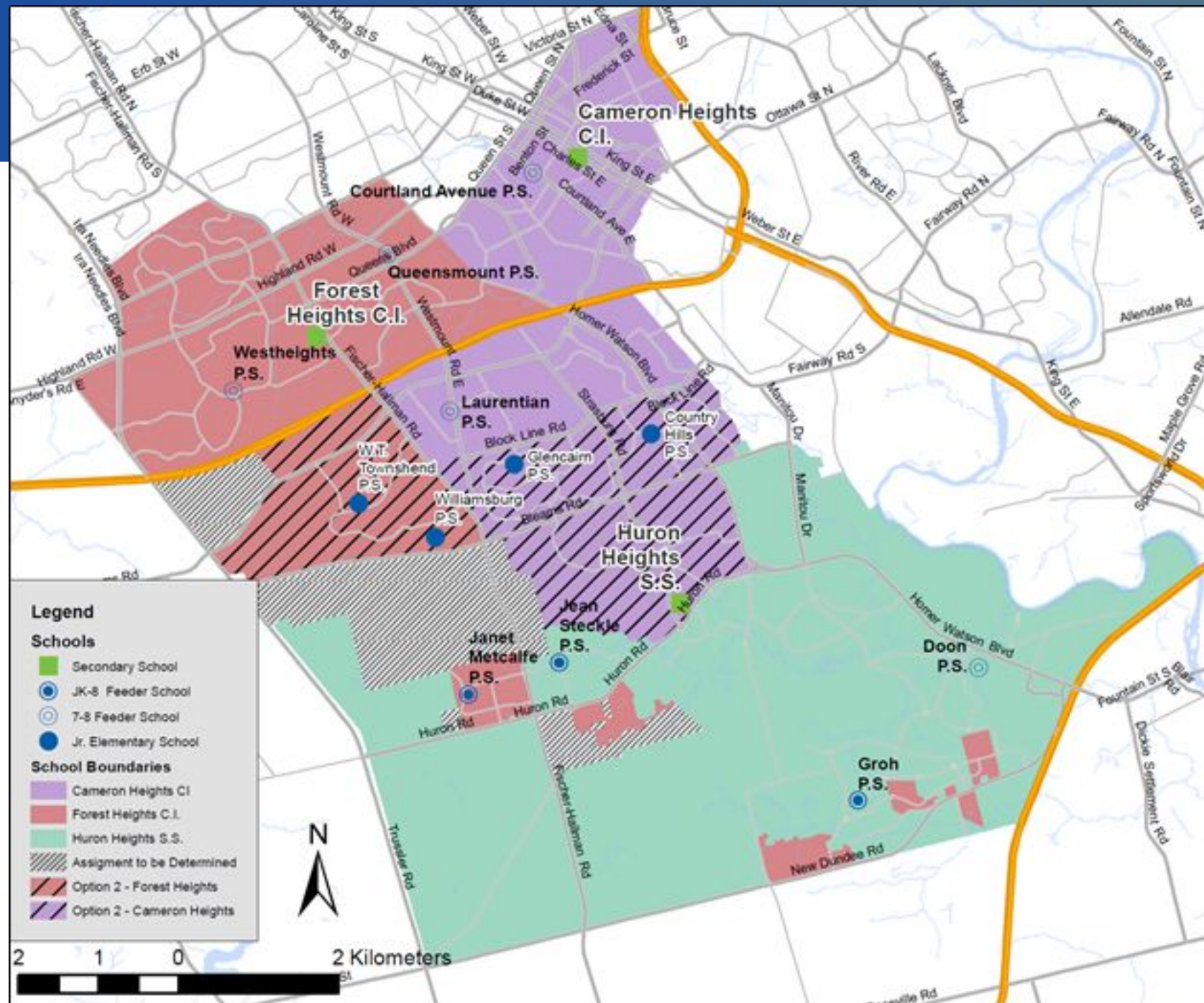
- Cameron Heights (WTT,WLM)
- Forest Heights

### OPTION 2

- Forest Heights (WTT,WLM)

- Option 2 eliminates feed to Cameron Heights

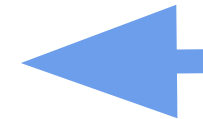
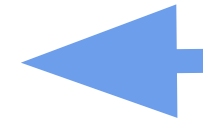
# SCENARIO 2 MAP



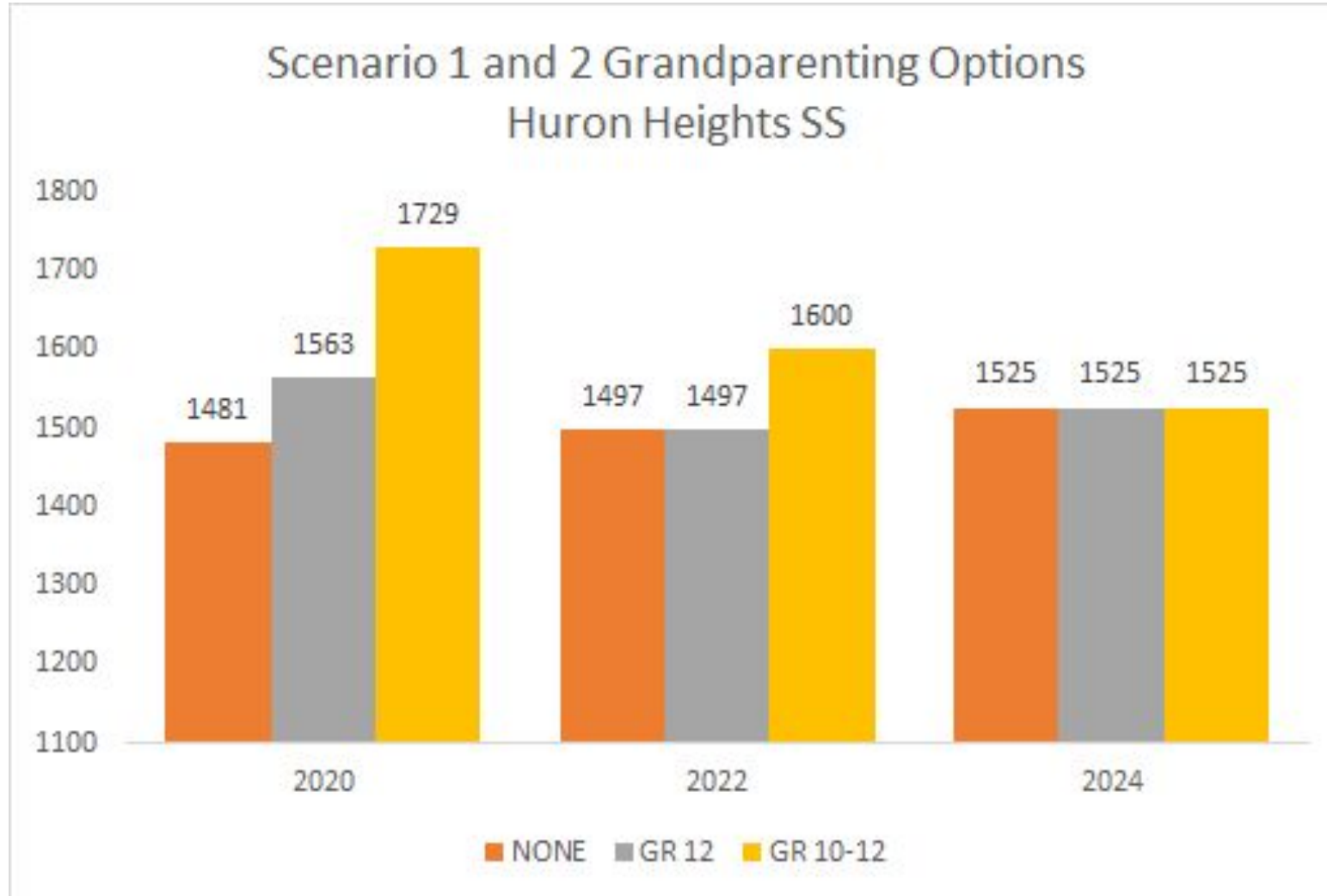
# SCENARIO 2 ENROLMENT PROJECTIONS

**Table 5 - Scenario 2 Enrolment Projections**

School	Grades	2018 Capacity		Enrolment (ADE*)/ Utilization (%)					
		OTG	Portables	2018	2020	2022	2024	2026	2028
CHCI	9-12	1596	6	1778	1634	1688	1747	1714	1715
				111%	102%	106%	109%	107%	107%
FHCI	9-12	1272	0	1046	1574	1668	1722	1687	1631
				82%	124%	131%	135%	133%	128%
HHSS	9-12	1224	12	1522	1481	1497	1525	1584	1611
				124%	121%	122%	125%	129%	132%

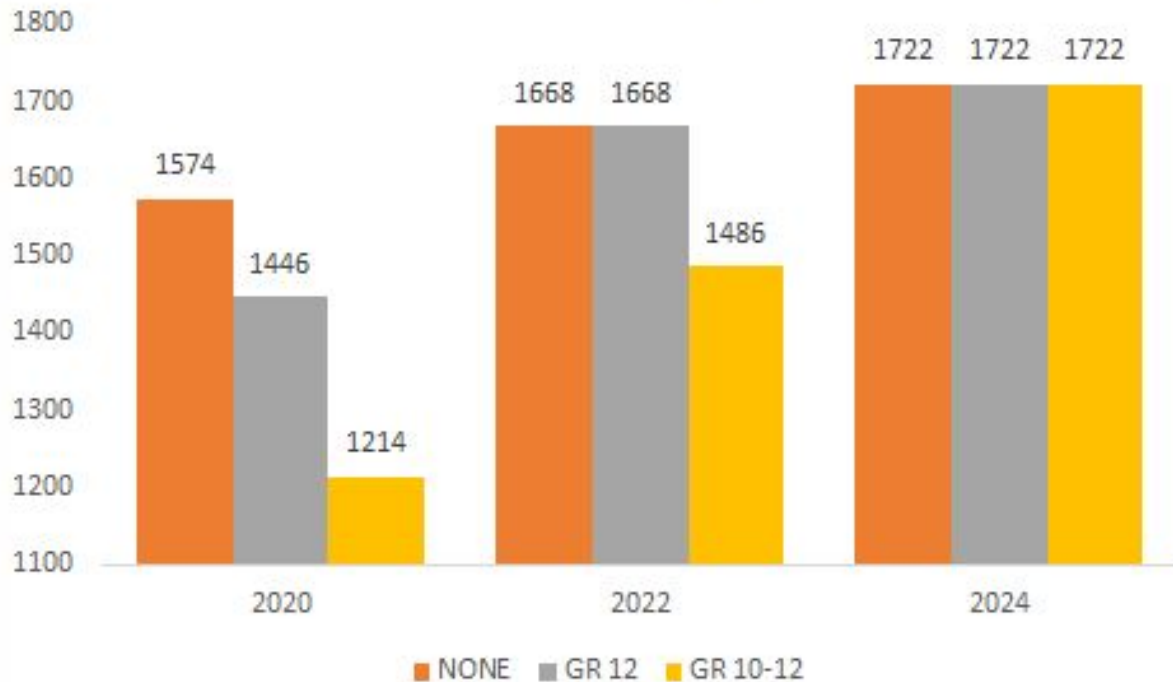


# SCENARIO 2 GRANDPARENTING IMPACTS

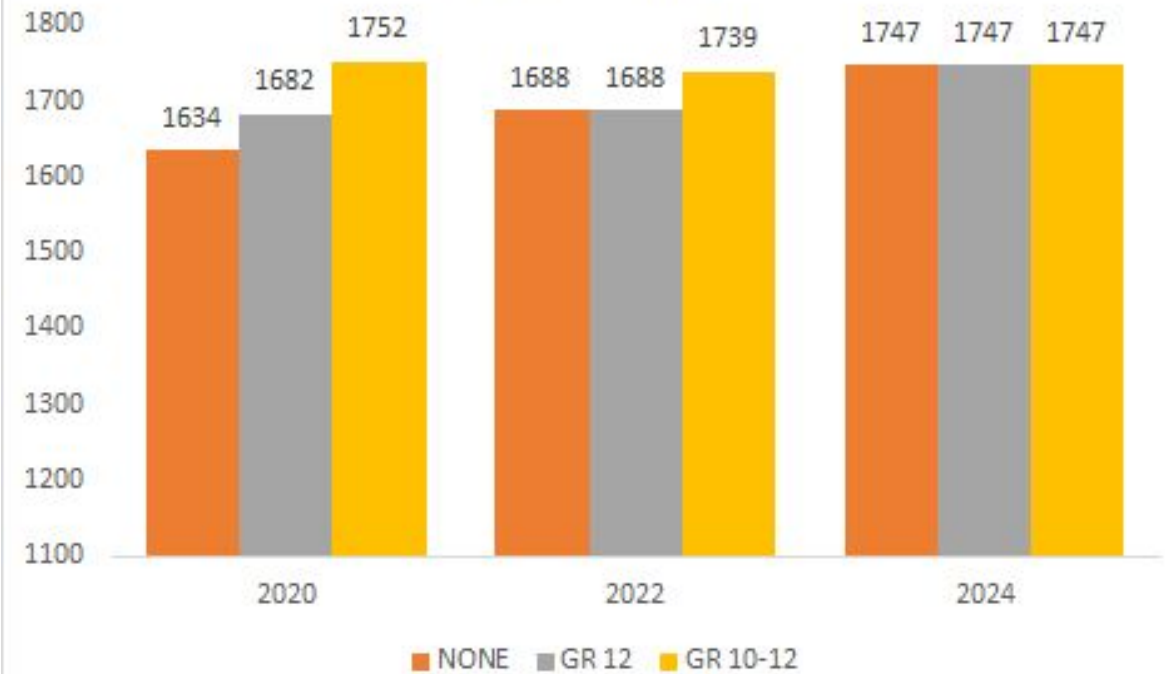


# SCENARIO 2 GRANDPARENTING IMPACTS

Scenario 2 Grandparenting Options  
Forest Heights CI



Scenario 2 Grandparenting Options  
Cameron Heights CI



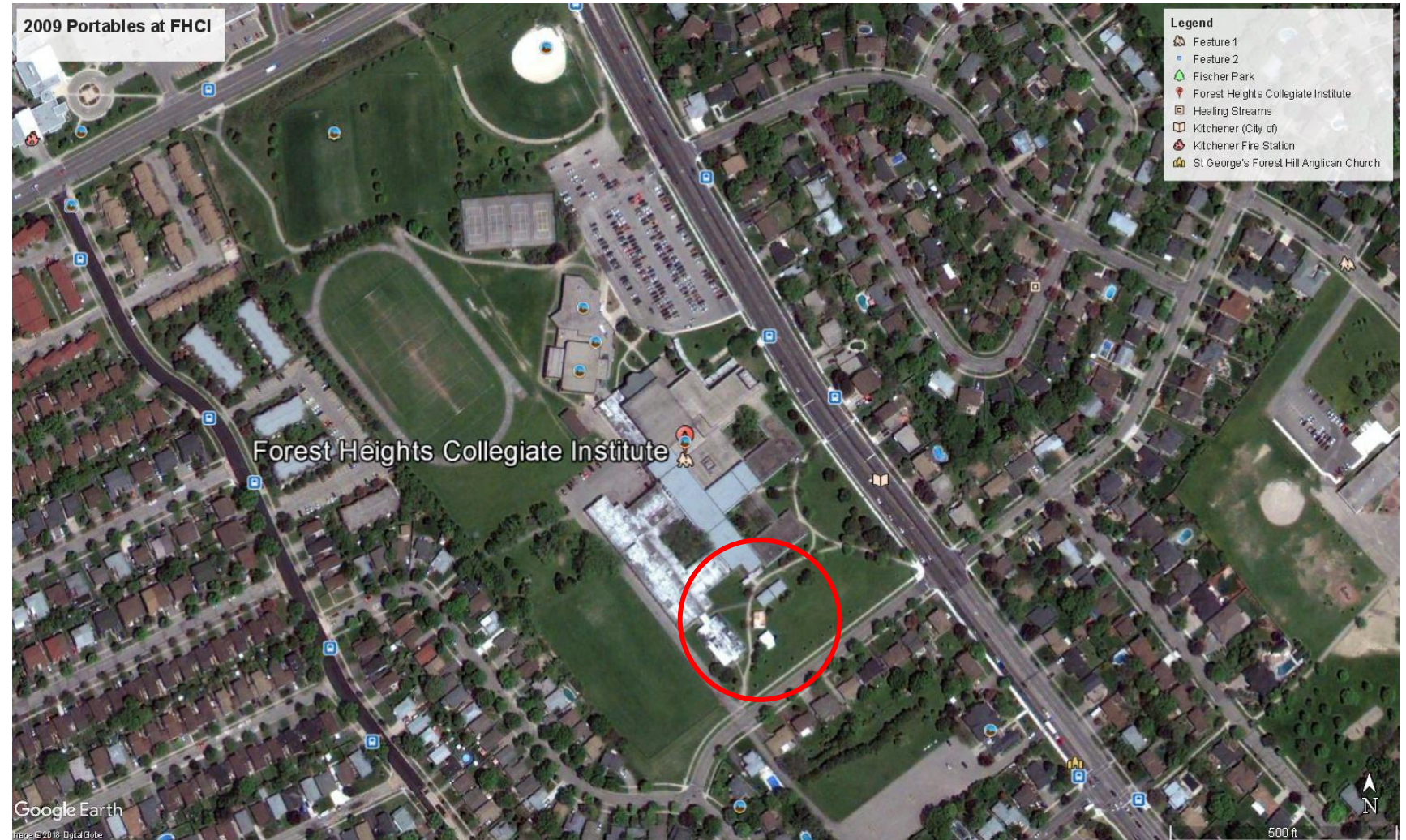
# SCENARIO 2 TRANSPORTATION IMPACTS

- No increase in transportation costs
- Bussing of Glencairn and Country Hills students to Cameron offset by the WT Townshend and Williamsburg students now walking to Forest Heights

# SCENARIO 2 TEMPORARY ACCOMMODATION AT FOREST HEIGHTS CI

in 2009 Forest Heights CI hosted a 6-pak as well as 4 portable classrooms for a total of 10 classrooms. We think the school can accommodate an even greater number of portables given the large site and we are working with Facility Services to develop a placement plan.

10 portables adds 210 pupil places to FHCI.



# FEEDER SCHOOL IMPLICATIONS

## LAURENTIAN PS

### STATUS QUO

- Cameron Heights
- Huron Heights (GCP, COH)
- Forest Heights (DA)

### OPTION 1

- Cameron Heights
- Forest Heights (GCP, COH, DA)

### OPTION 2

- Cameron Heights (GCP, COH)
- Forest Heights (DA)

- Both Option 1 and 2 eliminate feed to Huron Heights
- Forest Heights feed remains in Option 2 with Huron South DA students, but this is a temporary assignment

## QUEENSMOUNT PS

### STATUS QUO

- Cameron Heights (WTT, WLM)
- Forest Heights

### OPTION 1

- Cameron Heights (WTT, WLM)
- Forest Heights

### OPTION 2

- Forest Heights (WTT, WLM)

- Option 2 eliminates feed to Cameron Heights

# ROUND TABLE





# INNOVATING TOMORROW BY EDUCATING TODAY

51 Ardelt Avenue  
Kitchener, ON N2C 2R5  
tel: 519.570.0003  
WEB: WRDSB.CA



[FACEBOOK.COM/WRDSB](https://facebook.com/wrdsb)



[TWITTER.COM/WRDSB](https://twitter.com/wrdsb)



[INSTAGRAM.COM/WR\\_DSB](https://instagram.com/wr_dsb)



[YOUTUBE.COM/WRDSBVIDEO](https://youtube.com/wrdsbvideo)