



Report to Committee of the Whole

November 12, 2018

Subject: West Waterloo Elementary Boundary Study Phase 2

Recommendation

That the Waterloo Region District School Board approve the commencement of the West Waterloo Elementary Boundary Study Phase 2, involving Vista Hills Public School, Laurelwood Public School, and Abraham Erb Public School.

Status

The West Waterloo Elementary Schools Boundary Study, completed in 2015, recommended a second phase be implemented between December 2018 and 2020 through the completion of a new boundary study. This phase would consider redirecting Abraham Erb Public School area Grade 7 and 8 students to Laurelwood Public School, and reduce enrolment pressures at Vista Hills Public School. It was recommended that a boundary study take place after there was greater certainty around funding to construct permanent accommodation at Laurelwood Public School and/or Vista Hills Public School could no longer accommodate the enrolment from the Abraham Erb Public School area (in permanent or temporary accommodation).

Prior to the opening of Vista Hills Public School, Abraham Erb Public School students attended Laurelwood Public School for Grade 7 and 8.

Attached to this report are the status quo projections for Abraham Erb Public School, Laurelwood Public School, and Vista Hills Public School, as well as projections showing the proposed Grade 7 and 8 redirection (see Appendix B). A study area map is provided in Appendix A.

Vista Hills Public School will remain over capacity despite the redirection of Abraham Erb Public School Grade 7 and 8 students. Other measures to relieve enrolment pressure at Vista Hills Public School may need to be considered as part of the boundary study. This may include establishing new Development Areas.

Background

A boundary study is a public consultation process undertaken to change attendance areas, grades, and/or programs at a school or group of schools. Implementing boundary study recommendations may result in the need for construction and/or renovations. [Administrative Procedure 4991 - Boundary Studies](#) provides the guidelines and expectations for reviewing school attendance areas.

On November 23, 2015 the board of trustees approved the final recommendations of the West Waterloo Elementary Schools Boundary Study. This boundary study

established a boundary for the new Vista Hills Public School (opened September 2016), and included modifications to the boundaries of Abraham Erb, Edna Staebler, and Laurelwood Public Schools.

On May 14, 2018, Trustees were presented with the Annual Accommodation Planning Report 2018-2019 which outlined the West Waterloo Elementary Boundary Study Phase 2 for consideration in the 2018-2019 school year.

Financial implications

If the recommendation is approved, the redirection of students from Vista Hills Public School to Laurelwood Public School would require 2 bus runs to Laurelwood Public School. One bus can be accommodated within the present routing network and one new bus run would be required at a cost of approximately \$42,000.

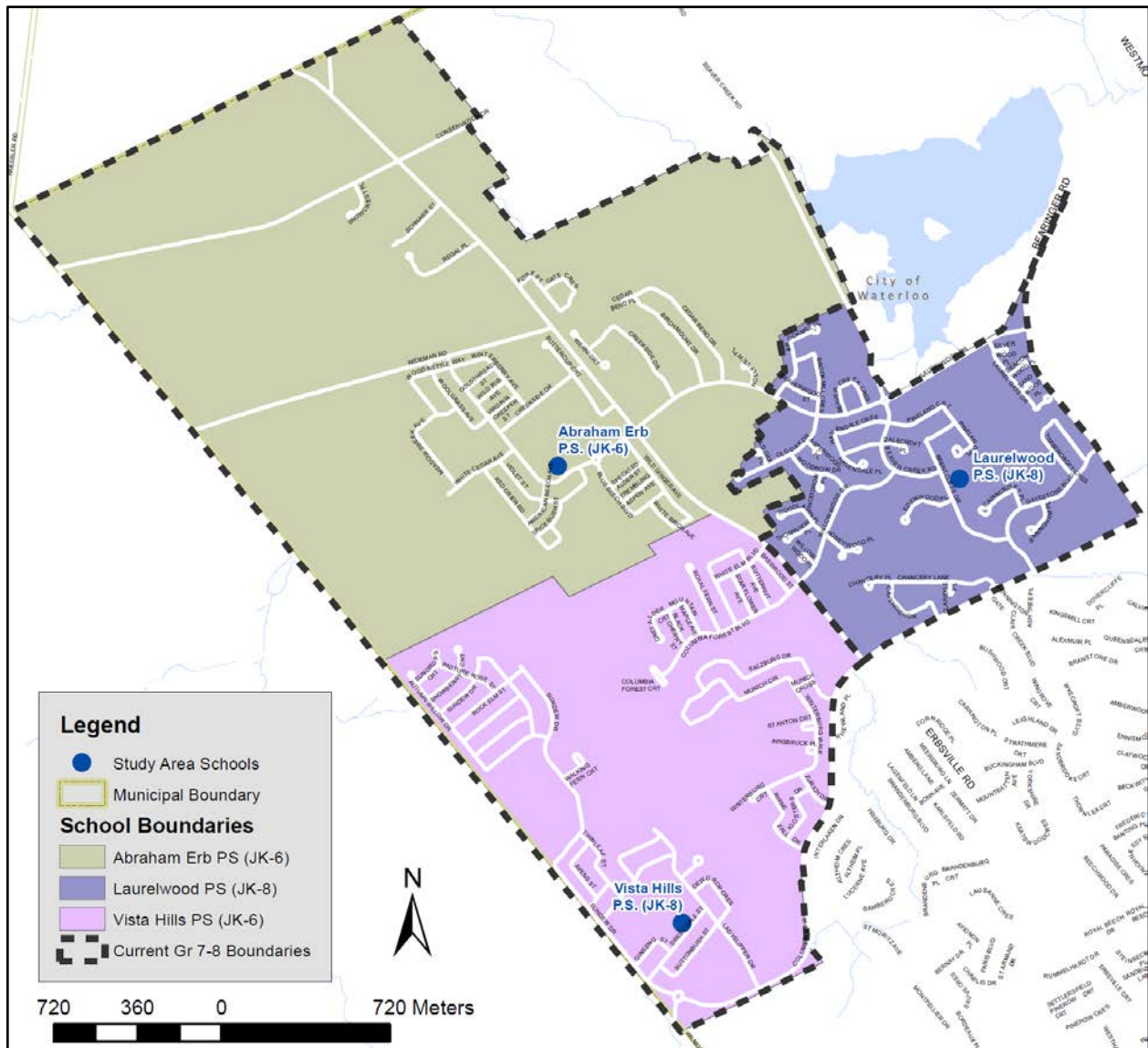
Communications

Upon approval of the West Waterloo Elementary Boundary Study Phase 2, the schools and their School Councils will be notified. A web page will be set up as a link on the main page of the Board's website. The web page will provide up-to-date information about the study. Public meetings will be advertised through social media, and flyers or electronic communications with the school communities.

A Boundary Study Working Group will also be established, consisting of the appropriate Principals, Superintendents of Student Achievement and Well-Being, parent and student representatives from the schools involved, and Planning and Facilities staff.

Prepared by: Matthew Gerard, Coordinating Superintendent, Business Services & Treasurer of the Board
Nathan Hercanuck, Manager of Planning
Emily Bumbaco, Senior Planner
Sarah Galliher, Senior Planner
in consultation with Coordinating Council

Study Area Map



Enrolment Projections

Table 1 - Status Quo Enrolment Projections

		2018 Capacity		Enrolment						
School	Grades	Capacity	Portables	2018	2019	2020	2022	2024	2026	2028
Abraham Erb Public School	JK-6	487	1	473	452	459	443	406	404	399
Laurelwood Public School	JK-8	504*	6	562	522	514	474	456	465	466
Vista Hills Public School	JK-8	643	5	758	905	987	1144	1142	1105	1107

*The capacity of Laurelwood Public School includes a semi-permanent 6 room portapak

Table 2 - Proposed Grade 7-8 Redirection Scenario Enrolment Projections

		2018 Capacity		Enrolment						
School	Grades	Capacity	Portables	2018	2019	2020	2022	2024	2026	2028
Abraham Erb Public School	JK-6	487	1	473	452	459	443	406	404	399
Laurelwood Public School	JK-8	504*	6	562	604	648	600	595	564	568
Vista Hills Public School	JK-8	643	5	758	822	853	1018	1003	1006	1005

*The capacity of Laurelwood Public School includes a semi-permanent 6 room portapak