



# FISCHER-HALLMAN/HURON ELEMENTARY SCHOOLS BOUNDARY STUDY

PUBLIC MEETING #1

OCTOBER 24, 2017

# AGENDA

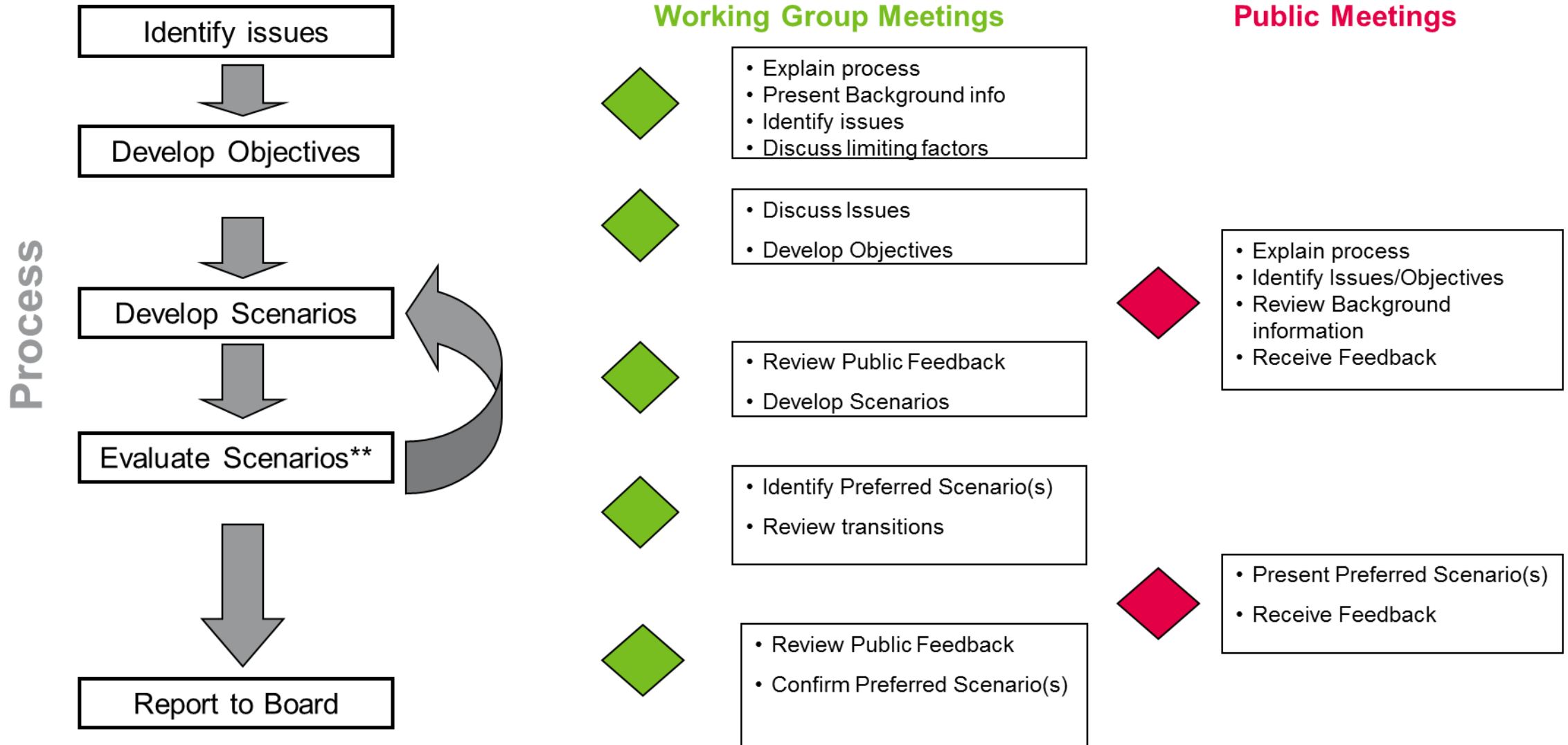
1. Welcome/Introductions
2. Explanation of Boundary Study Process
3. Study Purpose and Issues Identification
4. Draft Goals/Objectives
5. Scenarios
6. Next Steps
7. Important Dates
8. Q & A
9. Open House

# WHAT IS A BOUNDARY STUDY?

**The WRDSB considers a School Boundary Study when considering a change to one or more school attendance areas. There can be a number of reasons for a study:**

- Changing the grade structure of an elementary school – this would include changing an elementary school from a JK-6 format to a composite school with JK-8;
- Balancing enrolment and facilities – one school may have too many students for its capacity and another may have too few;
- After municipalities approve new residential development, the area needs to be assigned to a school where capacity exists;
- Opening of a new school and establishing the new boundary and adjusting boundaries of the existing schools in the area

# BOUNDARY STUDY PROCESS



\*\*Scenario development and evaluation may go through multiple iterations as scenarios are evaluated , and new ideas result from the evaluation.

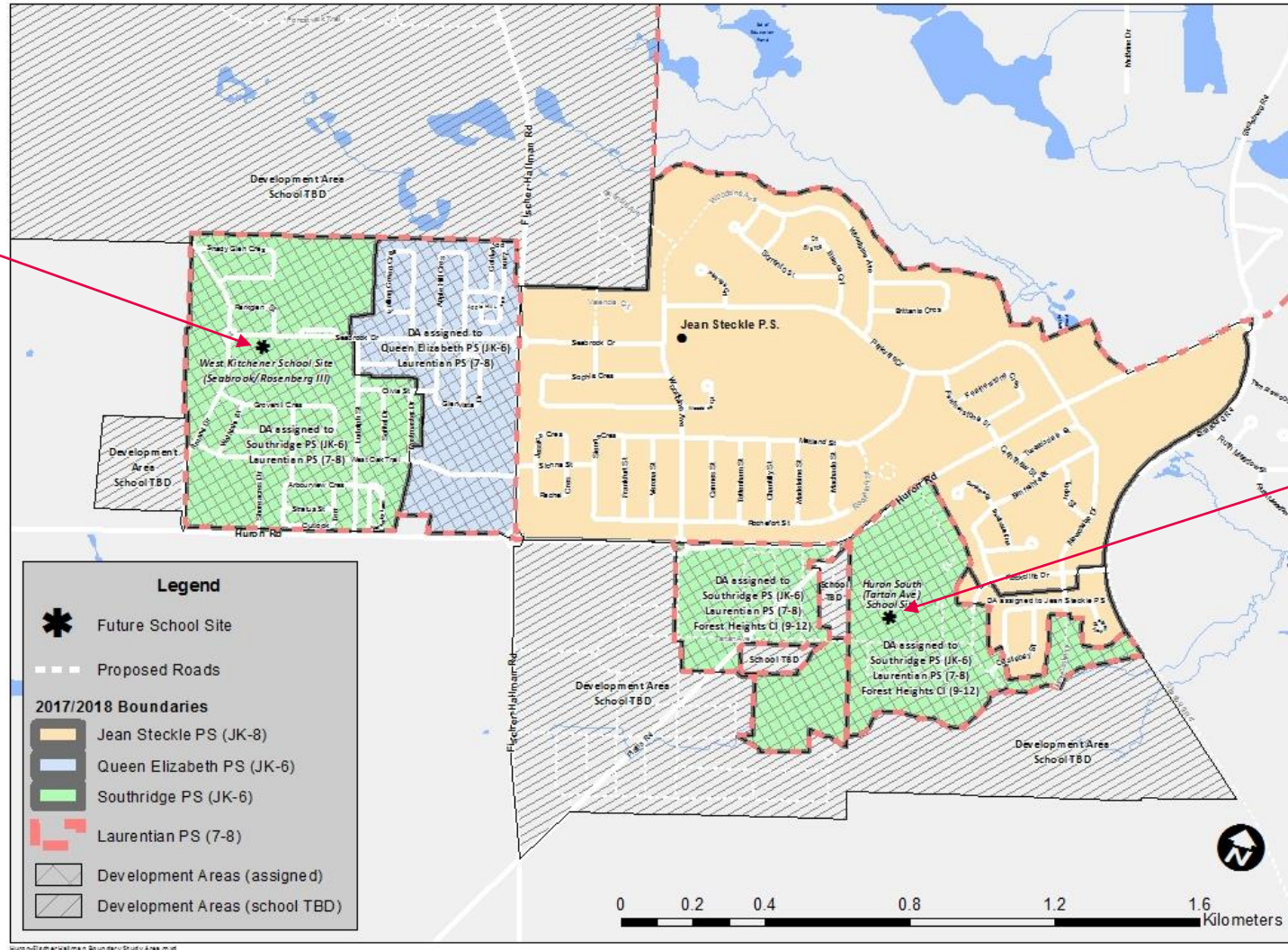
# PURPOSE AND ISSUES

## To establish a school attendance area boundary for the new Seabrook Dr. school in Southwest Kitchener

- The issues to be examined in this area include:
  - Enrolment Pressure at Jean Steckle PS
  - Transition planning

# STUDY AREA

New 335 Seabrook Dr. School Opening Sept. 2018



New Tartan Ave. School Opening ??? (Earliest, Sept. 2020)

# HISTORIC & CURRENT ENROLMENT

School	Grades	Enrolment						Capacity (OTG)**
		2012	2013*	2014	2015	2016	2017	
Jean Steckle PS	JK-8	-	531	722	819	886	912	712
Queen Elizabeth PS	JK-6	247	250	273	258	280	308	358
Southridge PS	JK-6	443	420	399	424	458	548	518
Laurentian PS	7-8	464	446	420	388	409	440	421
<b>Total</b>		<b>1154</b>	<b>1647</b>	<b>1814</b>	<b>1889</b>	<b>2033</b>	<b>2208</b>	<b>2009</b>

\*Jean Steckle PS opened 2013 JK-7, adding Gr. 8 the following year

\*\*OTG (On-the-ground) capacity. Ministry of Education measure describing school capacity

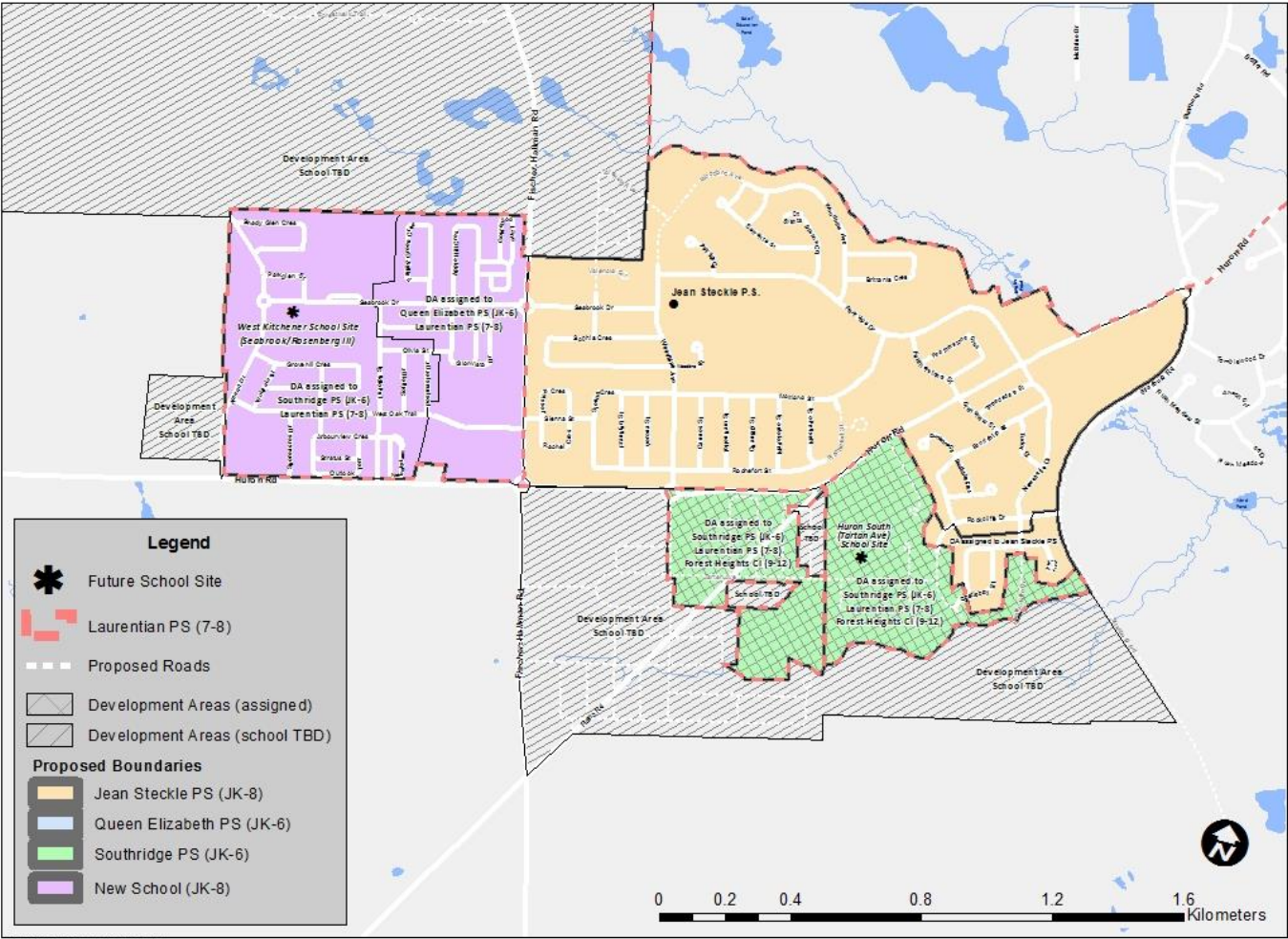
- Since 2014, enrolment at Study Area schools has increased by 21%

# DRAFT OBJECTIVES

- Establish school attendance boundary for new Elementary school
- Reduce enrolment at Jean Steckle PS
- Maximize the use of built permanent capacity/Minimize the need for temporary accommodation (portables)
- Minimize transitions where changes are proposed



# SCENARIO 1 - DESCRIPTION



- New boundary created for 335 Seabrook Dr. school consisting of Mattamy 'Wildflowers' subdivision

# SCENARIO 1 - PROJECTED ENROLMENT

School	Grades	Enrolment						Capacity (OTG)**
		2018	2020	2022	2024	2026	2028	
Jean Steckle PS	JK-8	935	1016	1034	998	954	912	715
Queen Elizabeth PS	JK-6	247	212	201	198	198	198	358
Southridge PS	JK-6	420	477	528	555	581	583	518
Laurentian PS	7-8	440	451	433	448	414	420	421
New School	JK-8*	279	308	333	356	359	355	669
<b>Total</b>		<b>2321</b>	<b>2464</b>	<b>2529</b>	<b>2555</b>	<b>2506</b>	<b>2468</b>	<b>2681</b>

\*New school will open as JK-7 in 2018, adding Gr. 8 in 2019

\*\*OTG (On-the-ground) capacity. Ministry of Education measure describing school capacity

# SCENARIO 1 – PROPOSED TRANSITIONS

## Southridge Public School

- ‘Wildflowers’ community students to attend new school Sept. 2018
  - Option for 2018 Gr. 6 students to finish at Southridge PS (with transportation), no siblings
  - French Immersion – students may remain at Southridge PS for the French Immersion program (with siblings). Transportation will not be provided (In accordance with Board Procedure – 4260 section 15.1)

## Queen Elizabeth Public School

- Wildflowers’ community students to attend new school Sept. 2018
  - Option for 2018 Gr. 6 students to finish at Queen Elizabeth PS (with transportation), no siblings

# SCENARIO 1 – PROPOSED TRANSITIONS

## Laurentian Public School

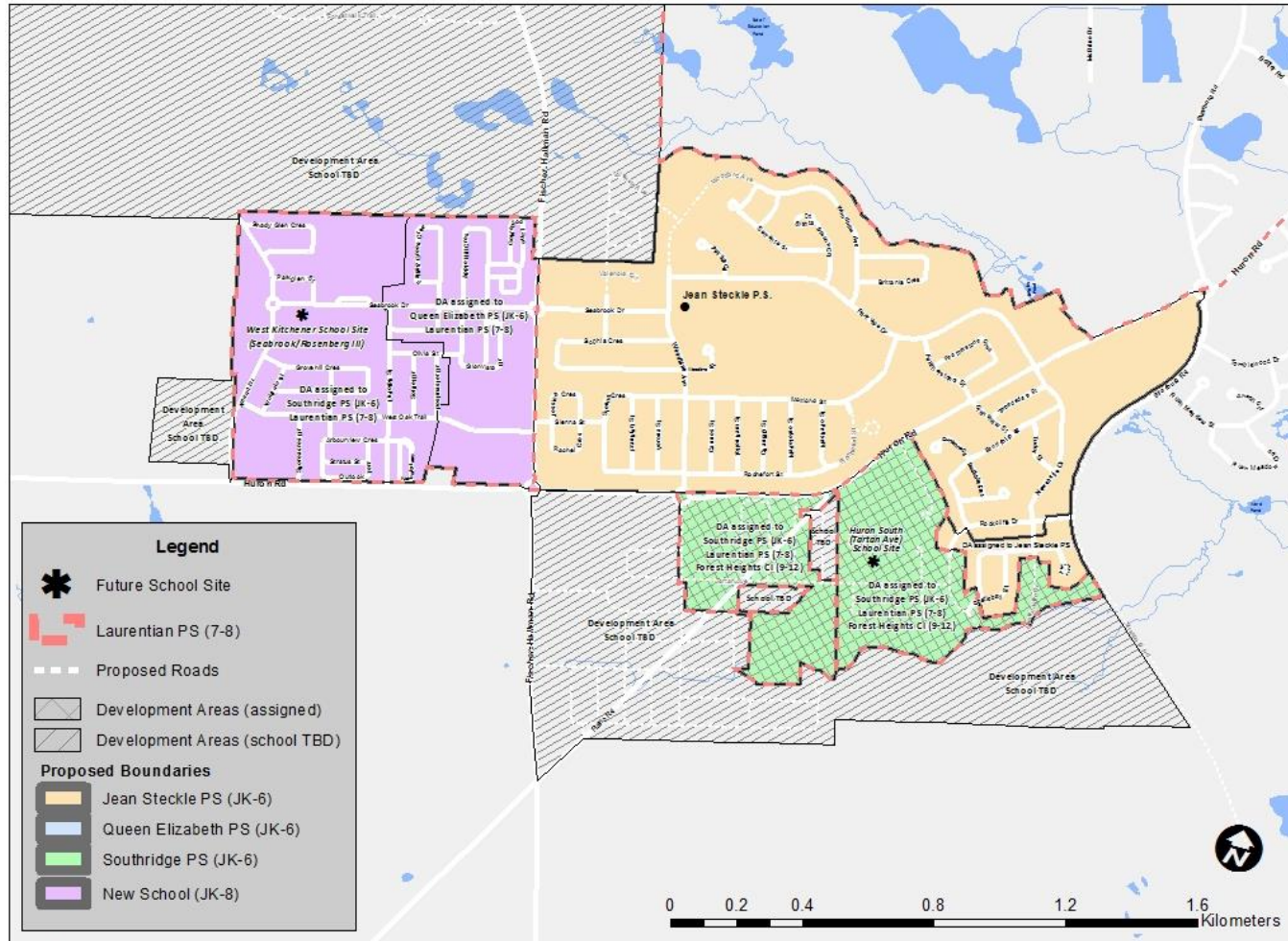
- ‘Wildflowers’ community students to attend new school Sept. 2018
  - 2018 Gr. 8 students to finish at Laurentian PS (with transportation), no siblings

# SCENARIO 1 – DRAFT OBJECTIVES

## Scenario Evaluation

Draft Objective	Comments
Establish school attendance boundary for new Elementary school	<ul style="list-style-type: none"><li>• Yes.</li></ul>
Reduce enrolment at Jean Steckle PS	<ul style="list-style-type: none"><li>• Does not reduce enrolment at Jean Steckle PS.</li></ul>
Maximize the use of built permanent capacity/Minimize the need for temporary accommodation (portables)	<ul style="list-style-type: none"><li>• Does not reduce portables at Jean Steckle PS.</li><li>• Leaves more surplus permanent capacity at new school than other options.</li></ul>
Minimize transitions where changes are proposed	<ul style="list-style-type: none"><li>• Transitions for Queen Elizabeth, Southridge students to new school</li></ul>

# SCENARIO 2 - DESCRIPTION



- New boundary established for 335 Seabrook Dr. school consisting of Mattamy 'Wildflowers' subdivision
- Grade 7, 8 phased out of Jean Steckle PS to be accommodated at new Seabrook Dr. school, phased back in when enrolment pressure allows

# SCENARIO 2 – PROJECTED ENROLMENT

School	Grades	Enrolment						Capacity (OTG)**
		2018	2020	2022	2024	2026	2028	
Jean Steckle PS	JK-6	863	840	829	788	760	727	715
Queen Elizabeth PS	JK-6	247	212	201	198	198	198	358
Southridge PS	JK-6	420	477	528	555	581	583	518
Laurentian PS	7-8	440	451	433	448	415	420	421
New School	JK-8*	350	489	549	578	569	559	669
<b>Total</b>		<b>2320</b>	<b>2469</b>	<b>2540</b>	<b>2567</b>	<b>2523</b>	<b>2487</b>	<b>2681</b>

\*New school will open as JK-7 in 2018, adding Gr. 8 in 2019

\*\*OTG (On-the-ground) capacity. Ministry of Education measure describing school capacity

# SCENARIO 2 – PROPOSED TRANSITIONS

## Southridge Public School

- ‘Wildflowers’ community students to attend new school Sept. 2018
  - Option for 2018 Gr. 6 students to finish at Southridge PS (with transportation), no siblings
  - French Immersion – students may remain at Southridge PS for the French Immersion program (with siblings). Transportation will not be provided (In accordance with Board Procedure – 4260 section 15.1)

## Queen Elizabeth Public School

- Wildflowers’ community students to attend new school Sept. 2018
  - Option for 2018 Gr. 6 students to finish at Queen Elizabeth PS (with transportation), no siblings



# SCENARIO 2 – PROPOSED TRANSITIONS

## Laurentian Public School

- ‘Wildflowers’ community students to attend new school Sept. 2018
  - 2018 Gr. 8 students to finish at Laurentian PS (with transportation), no siblings

## Jean Steckle Public School

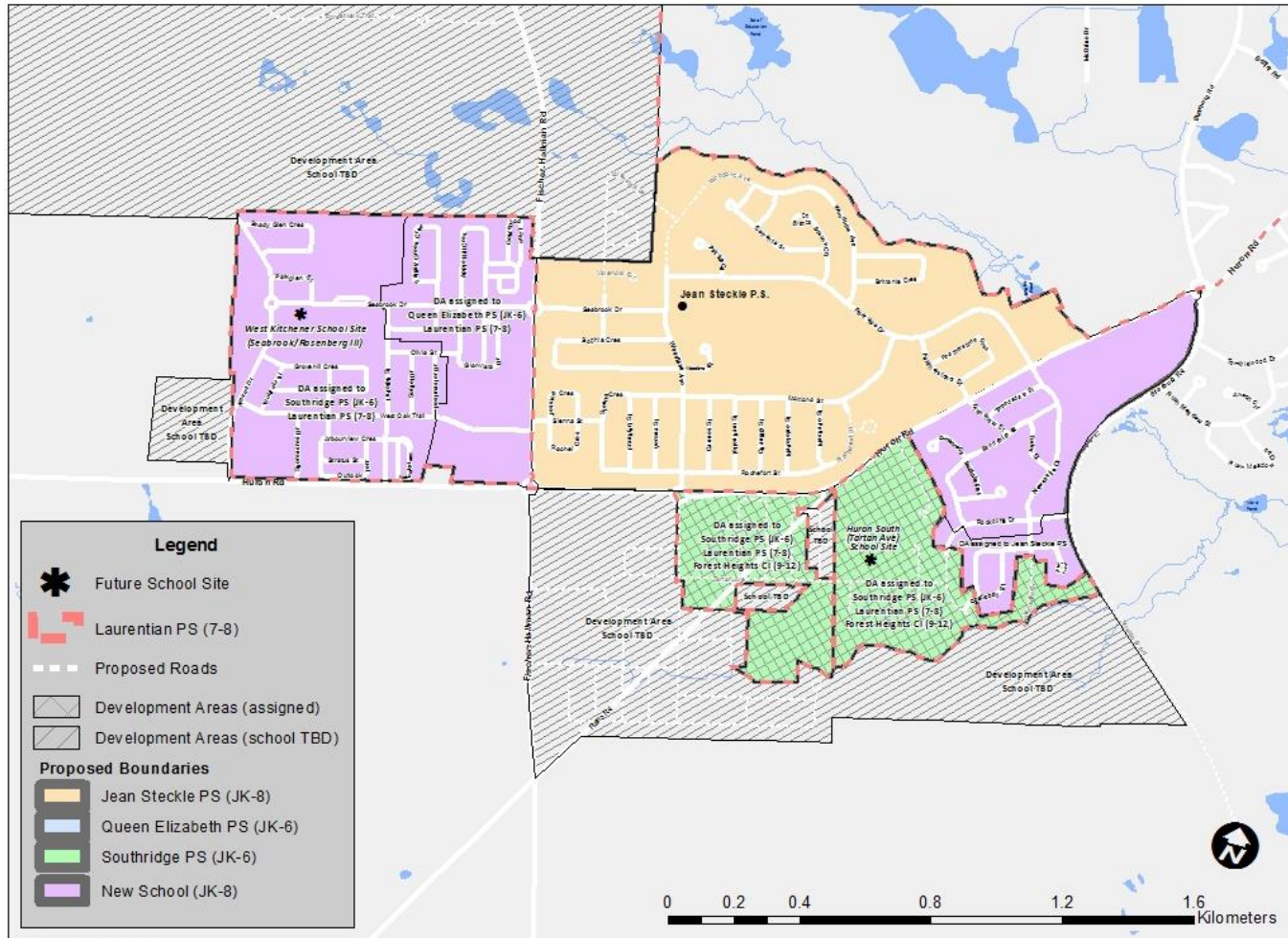
- 2018 Gr. 7 students to attend new school (Jean Steckle PS JK-6, 8)
- 2019 Gr. 7 and Gr. 8 students to attend new school (Jean Steckle PS JK-6)
  - Transportation provided in accordance with Board Policy 4009 (if eligible by distance)

# SCENARIO 2 – DRAFT OBJECTIVES

## Scenario Evaluation

Draft Objective	Comments
Establish school attendance boundary for new Elementary school	<ul style="list-style-type: none"><li>• Yes.</li></ul>
Reduce enrolment at Jean Steckle PS	<ul style="list-style-type: none"><li>• Yes. Peak enrolment reduced at Jean Steckle PS by 194 students</li></ul>
Maximize the use of built permanent capacity/Minimize the need for temporary accommodation (portables)	<ul style="list-style-type: none"><li>• Reduces portables at Jean Steckle PS.</li><li>• Accommodates most students in permanent capacity than other options.</li></ul>
Minimize transitions where changes are proposed	<ul style="list-style-type: none"><li>• Transitions for Queen Elizabeth, Southridge students to new school.</li><li>• Students ‘graduate’ into new school from Jean Steckle when changing to JK-6 organization.</li><li>• Students ‘graduate’ back to Jean Steckle when Gr. 7, 8 returned.</li></ul>
Other	<ul style="list-style-type: none"><li>• Program challenges – FI grade disconnect at new facility. Staff and resources.</li></ul>

# SCENARIO 3 - DESCRIPTION



- New boundary established for 335 Seabrook Dr. school consisting of Mattamy 'Wildflowers' subdivision
- Area of Jean Steckle PS boundary South of Huron Rd. assigned to new Seabrook Dr. school

# SCENARIO 3 – PROJECTED ENROLMENT

School	Grades	Enrolment						Capacity (OTG)**
		2018	2020	2022	2024	2026	2028	
Jean Steckle PS	JK-8	838	870	895	857	815	777	715
Queen Elizabeth PS	JK-6	247	212	201	198	198	198	358
Southridge PS	JK-6	420	477	528	555	581	583	518
Laurentian PS	7-8	440	450	433	448	414	420	421
New School	JK-8*	411	455	471	499	501	494	669
<b>Total</b>		<b>2356</b>	<b>2464</b>	<b>2528</b>	<b>2557</b>	<b>2509</b>	<b>2472</b>	<b>2681</b>

\*New school will open as JK-7 in 2018, adding Gr. 8 in 2019

\*\*OTG (On-the-ground) capacity. Ministry of Education measure describing school capacity

# SCENARIO 3 – PROPOSED TRANSITIONS

## Southridge Public School

- ‘Wildflowers’ community students to attend new school Sept. 2018
  - Option for 2018 Gr. 6 students to finish at Southridge PS (with transportation), no siblings
  - French Immersion – students may remain at Southridge PS for the French Immersion program (with siblings). Transportation will not be provided (In accordance with Board Procedure – 4260 section 15.1)

## Queen Elizabeth Public School

- Wildflowers’ community students to attend new school Sept. 2018
  - Option for 2018 Gr. 6 students to finish at Queen Elizabeth PS (with transportation), no siblings

# SCENARIO 3 – PROPOSED TRANSITIONS

## Laurentian Public School

- ‘Wildflowers’ community students to attend new school Sept. 2018
  - 2018 Gr. 8 students to finish at Laurentian PS (with transportation), no siblings

## Jean Steckle Public School

- 2018 JK- 7 students within Huron Village Community to attend new school
  - 2018 Gr. 8 students within Huron Village Community to attend Jean Steckle PS
- 2019 JK- 8 students within Huron Village Community to attend new school
- 2020 (or beyond) JK- 7 students within Huron Village Community to attend new school (Tartan Ave.)
- 2021 (or beyond) JK- 8 students within Huron Village Community to attend new school (Tartan Ave.)

# SCENARIO 3 – PROPOSED TRANSITIONS

## Huron Village Community – Potential Impact

	Year									
Grade	2012	2013	2014	2015	2016	2017	2018	2019	2020	2021
JK	ALP	JST	JST	JST	JST	JST	Seabrook	Seabrook	Tartan	Tartan
SK	ALP	JST	JST	JST	JST	JST	Seabrook	Seabrook	Tartan	Tartan
1	ALP	JST	JST	JST	JST	JST	Seabrook	Seabrook	Tartan	Tartan
2	ALP	JST	JST	JST	JST	JST	Seabrook	Seabrook	Tartan	Tartan
3	ALP	JST	JST	JST	JST	JST	Seabrook	Seabrook	Tartan	Tartan
4	ALP	JST	JST	JST	JST	JST	Seabrook	Seabrook	Tartan	Tartan
5	ALP	JST	JST	JST	JST	JST	Seabrook	Seabrook	Tartan	Tartan
6	ALP	JST	JST	JST	JST	JST	Seabrook	Seabrook	Tartan	Tartan
7	LAU	JST	JST	JST	JST	JST	Seabrook	Seabrook	Tartan	Tartan
8	LAU	LAU	JST	JST	JST	JST	Seabrook	Seabrook	Seabrook	Tartan

ALP – Alpine PS  
JST – Jean Steckle PS

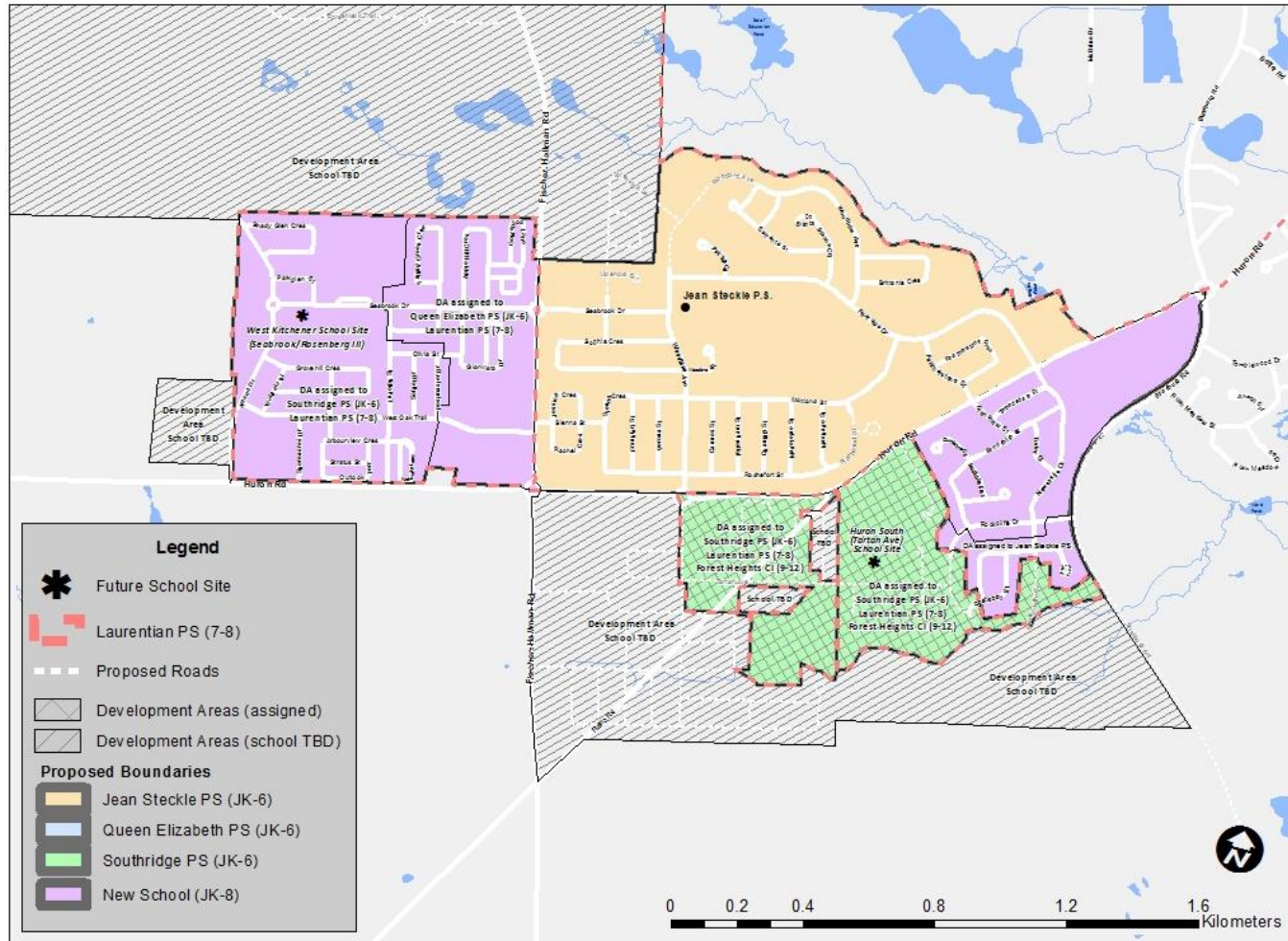
# SCENARIO 3 – DRAFT OBJECTIVES

## Scenario Evaluation

Draft Objective	Comments
Establish school attendance boundary for new Elementary school	<ul style="list-style-type: none"><li>• Yes.</li></ul>
Reduce enrolment at Jean Steckle PS	<ul style="list-style-type: none"><li>• Yes. Peak enrolment reduced at Jean Steckle PS by 139 students</li></ul>
Maximize the use of built permanent capacity/Minimize the need for temporary accommodation (portables)	<ul style="list-style-type: none"><li>• Reduces portables at Jean Steckle PS.</li><li>• Accommodates more students in permanent capacity than Scenario 1.</li></ul>
Minimize transitions where changes are proposed	<ul style="list-style-type: none"><li>• Transitions for Queen Elizabeth, Southridge students to new school.</li><li>• Transitions for Huron Village from Jean Steckle to new school (Seabrook)</li><li>• Transitions for Huron Village from new school (Seabrook) to new school (Tartan).</li></ul>



# SCENARIO 4 - DESCRIPTION



- New boundary created for 335 Seabrook Dr. school consisting of Mattamy 'Wildflowers' subdivision
- Grade 7, 8 phased out of Jean Steckle PS to be accommodated at new Seabrook Dr. school, phased back in when enrolment pressure allows
- Area of Jean Steckle PS boundary South of Huron Rd. (Huron Village) assigned to New School

# SCENARIO 4 – PROJECTED ENROLMENT

School	Grades	Enrolment						Capacity (OTG)**
		2018	2020	2022	2024	2026	2028	
Jean Steckle PS	JK-6	779	725	708	668	638	606	715
Queen Elizabeth PS	JK-6	247	212	201	198	198	198	358
Southridge PS	JK-6	420	477	528	555	581	583	518
Laurentian PS	7-8	440	451	433	448	414	420	421
New School	JK-8*	436	599	658	687	677	666	669
<b>Total</b>		<b>2322</b>	<b>2464</b>	<b>2528</b>	<b>2556</b>	<b>2508</b>	<b>2473</b>	<b>2681</b>

\*New school will open as JK-7 in 2018, adding Gr. 8 in 2019

\*\*OTG (On-the-ground) capacity. Ministry of Education measure describing school capacity

# SCENARIO 4 – PROPOSED TRANSITIONS

## Southridge Public School

- ‘Wildflowers’ community students to attend new school Sept. 2018
  - Option for 2018 Gr. 6 students to finish at Southridge PS (with transportation), no siblings
  - French Immersion – students may remain at Southridge PS for the French Immersion program (with siblings). Transportation will not be provided (In accordance with Board Procedure – 4260 section 15.1)

## Queen Elizabeth Public School

- Wildflowers’ community students to attend new school Sept. 2018
  - Option for 2018 Gr. 6 students to finish at Queen Elizabeth PS (with transportation), no siblings

# SCENARIO 4 – PROPOSED TRANSITIONS

## Laurentian Public School

- ‘Wildflowers’ community students to attend new school Sept. 2018
  - 2018 Gr. 8 students to finish at Laurentian PS (with transportation), no siblings

## Jean Steckle Public School

- 2018 Gr. 7 students to attend new school (Jean Steckle PS JK-6, 8)
- 2019 Gr. 7 and Gr. 8 students to attend new school (Jean Steckle PS JK-6)
  - Transportation provided in accordance with Board Policy 4009 (if eligible by distance)

# SCENARIO 4 – PROPOSED TRANSITIONS

## Jean Steckle Public School Continued

- 2018 JK- 7 students within Huron Village Community to attend new school
  - 2018 Gr. 8 students within Huron Village Community to attend Jean Steckle PS
- 2019 JK- 8 students within Huron Village Community to attend new school
- 2020 (or beyond) JK- 7 students within Huron Village Community to attend new school (Tartan Ave.)
- 2021 (or beyond) JK- 8 students within Huron Village Community to attend new school (Tartan Ave.)

# SCENARIO 4 – DRAFT OBJECTIVES

## Scenario Evaluation

Draft Objective	Comments
Establish school attendance boundary for new Elementary school	<ul style="list-style-type: none"><li>• Yes.</li></ul>
Reduce enrolment at Jean Steckle PS	<ul style="list-style-type: none"><li>• Reduces peak enrolment at Jean Steckle PS by 255 students</li></ul>
Maximize the use of built permanent capacity/Minimize the need for temporary accommodation (portables)	<ul style="list-style-type: none"><li>• Reduces most portables at Jean Steckle PS.</li><li>• Leaves least surplus permanent capacity at new school than other options.</li></ul>

# SCENARIO 4 – DRAFT OBJECTIVES

## Scenario Evaluation Continued

Draft Objective	Comments
Minimize transitions where changes are proposed	<ul style="list-style-type: none"><li>• Transitions for Queen Elizabeth, Southridge students to new school.</li><li>• Students ‘graduate’ into new school from Jean Steckle when changing to JK-6 organization.</li><li>• Students ‘graduate’ back to Jean Steckle when Gr. 7, 8 returned.</li><li>• Transitions for ‘S of Huron Rd.’ from Jean Steckle to new school (Seabrook)</li><li>• Transitions for ‘S of Huron Rd.’ from new school (Seabrook) to new school (Tartan).</li></ul>
Other	<ul style="list-style-type: none"><li>• Program challenges – FI grade disconnect at new facility. Staff and resources.</li></ul>

# NEXT STEPS

- Working Group to review public meeting comments
- Working Group to refine scenarios based on public feedback
- Working Group to develop recommendations
- A minimum of 1 additional public meeting to share draft recommendations
- Staff to bring recommendations to Board of Trustees
- Board of Trustees vote on recommendations



# IMPORTANT DATES

- Public Meeting #2: Late November 2017 (Tentative)
- Boundary and Implementation Recommendations to Trustees December 2017 (Tentative)

# CONTACT INFORMATION

- Website: [www.wrdsb.ca](http://www.wrdsb.ca)  
(About>Planning>Boundary Studies>Fischer-Hallman/Huron Boundary Study)
- E-mail: [boundaryfeedback@wrdsb.ca](mailto:boundaryfeedback@wrdsb.ca)
- Phone: 519-570-0003 ext. 4419



# INNOVATING TOMORROW BY EDUCATING TODAY

51 Ardelt Avenue  
Kitchener, ON N2C 2R5  
tel: 519.570.0003  
WEB: WRDSB.CA

