




Waterloo Region
District School Board

Baden Elementary Schools Boundary Study

Working Group Meeting #5

May 27, 2014

Agenda

1. Welcome
 2. Draft Minutes Review
 3. Public Meeting #1
 - Feedback
 4. Scenario Discussion
 - Preferred scenario
 5. Draft Report and Recommendations
 6. Public Meeting #2
 - What will be presented?
 7. Meeting schedule
 8. Roundtable
- 

Public Meeting # 1

- Turnout - approximately 35 community members
- Comments/questions generally positive – received no objections to Scenarios. Mostly questions re: implementation.
- Feedback
 - Consider joint facility with WCDSB in Baden – reduce enrolment at WRDSB facilities (recapture Catholic families)
 - Concern expressed re: students moving between WODSS and Sir Adam Beck PS if WODSS facility to be used as a strategy to accommodate 7/8 program.

Scenario Discussion

- Scenarios 2 & 3 remain the preferred options
 - Scenario 2
 - Sir Adam Beck PS becomes JK-8 (keeps own Gr. 6's)
 - 3 classroom addition at Sir Adam Beck P.S. (require interim measures to accommodate Gr. 7/8 until addition could be built)
 - Reduce enrolment at Baden P.S.
 - Require interim measures to provide Gr. 7/8 infrastructure at Sir Adam Beck P.S. (portables, internal renovations, WODSS)
 - Scenario 3
 - Sir Adam Beck PS becomes JK-8 (keeps own Gr. 6's, and receives Gr. 6's from New Dundee P.S.)
 - 4 classroom addition at Sir Adam Beck P.S. (require interim measures to accommodate Gr. 7/8 until addition could be built)
 - Reduce enrolment at Baden P.S.
 - Require interim measures to provide Gr. 7/8 infrastructure at Sir Adam Beck P.S. (portables, internal renovations, WODSS)

Draft Study Goals

- Goals explain what the Working Group **intends to achieve through the boundary study process:**
 - To develop a solution that is long-term (approximately 10 years), taking into consideration current and future population density and demographics
 - To minimize transitions for students where changes are proposed through grandfathering/phasing
 - To strengthen the Board's business case for additional capacity funding for current students and as residential development plans progress in the Township of Wilmot
 - To provide equitable learning opportunities for students and staff by moving towards the following criteria (from Board Policy 3002 – Elementary School Size and Configuration)
 - JK-6 facilities between 350 and 400 students (approx. 2 classes per grade)
 - JK-8 facilities between 500 and 650 students (approx. 2 classes per grade)
 - Minimizing the potential for schools with enrolments over 650 students

Draft Study Objectives

- Objectives are **specific and measurable statements** of the goals. They provide the criteria to evaluate the scenarios:
 - To reduce enrolment at Baden Public School beginning in the 2015/16 school year
 - To increase the number of students housed in permanent capacity within the study area in a cost-effective way, recognizing that there can be no additional capacity built prior to the 2017/18 school year

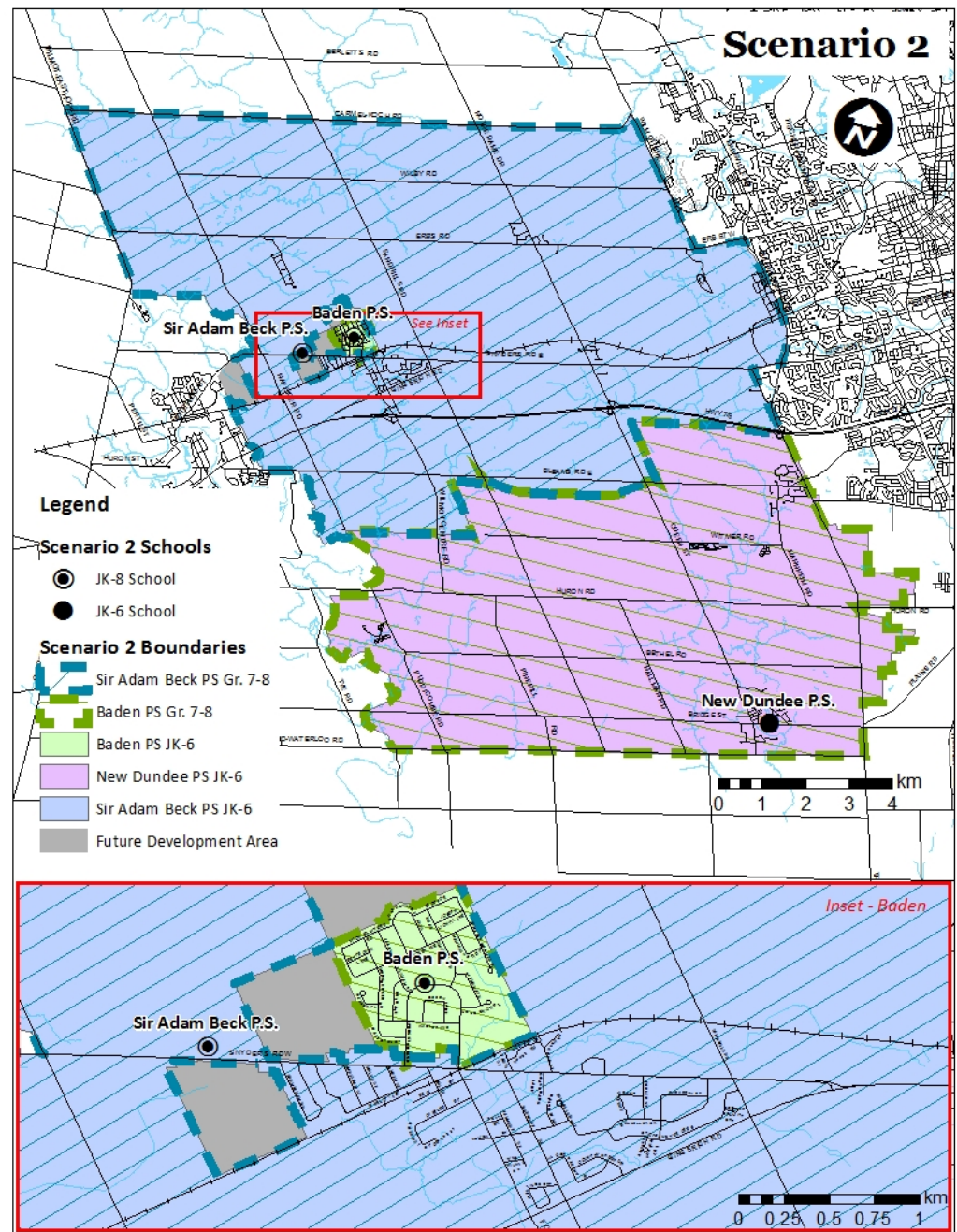
Scenario 2

Summary

- Sir Adam Beck P.S. becomes JK-8 keeping own Gr. 6's
- Baden P.S. remains JK-8 continues to provide Gr 7/8 for itself and New Dundee P.S. students.

Infrastructure Implications

- Sir Adam Beck P.S. require 3 classroom addition (earliest possible completion date Sept 2017).
- Reduction in portables required at Baden P.S. (over time 8 -> 6-> 4).

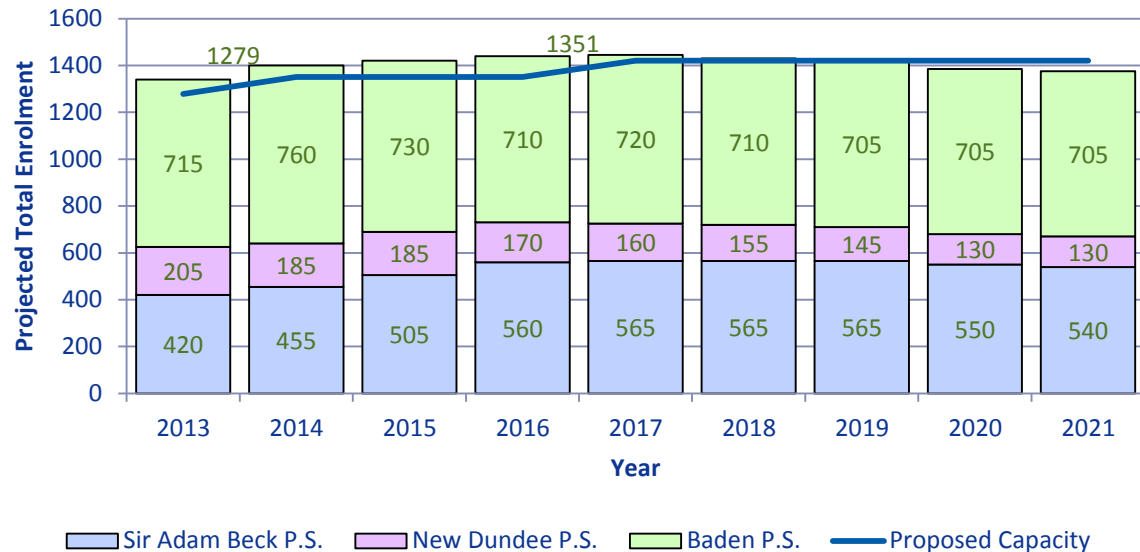


Scenario 2 Projections

School	2015/16 Capacity	New Cap.(req. approval)	Scenario 2 Total Capacity	Grades	Projected Total Students by Year			
					2015	2017	2019	2021
Baden PS	605	0	605	JK-8	730	720	705	705
New Dundee PS	236	0	236	JK-6	185	160	145	130
Sir Adam Beck	510	69	579	JK-8	505	565	565	540
Total	1351	69	1420		1420	1440	1415	1375

3 classroom addition at Sir Adam Beck P.S. to include:

- Science/Tech Rm
- Music Rm
- Art Rm



Scenario 3

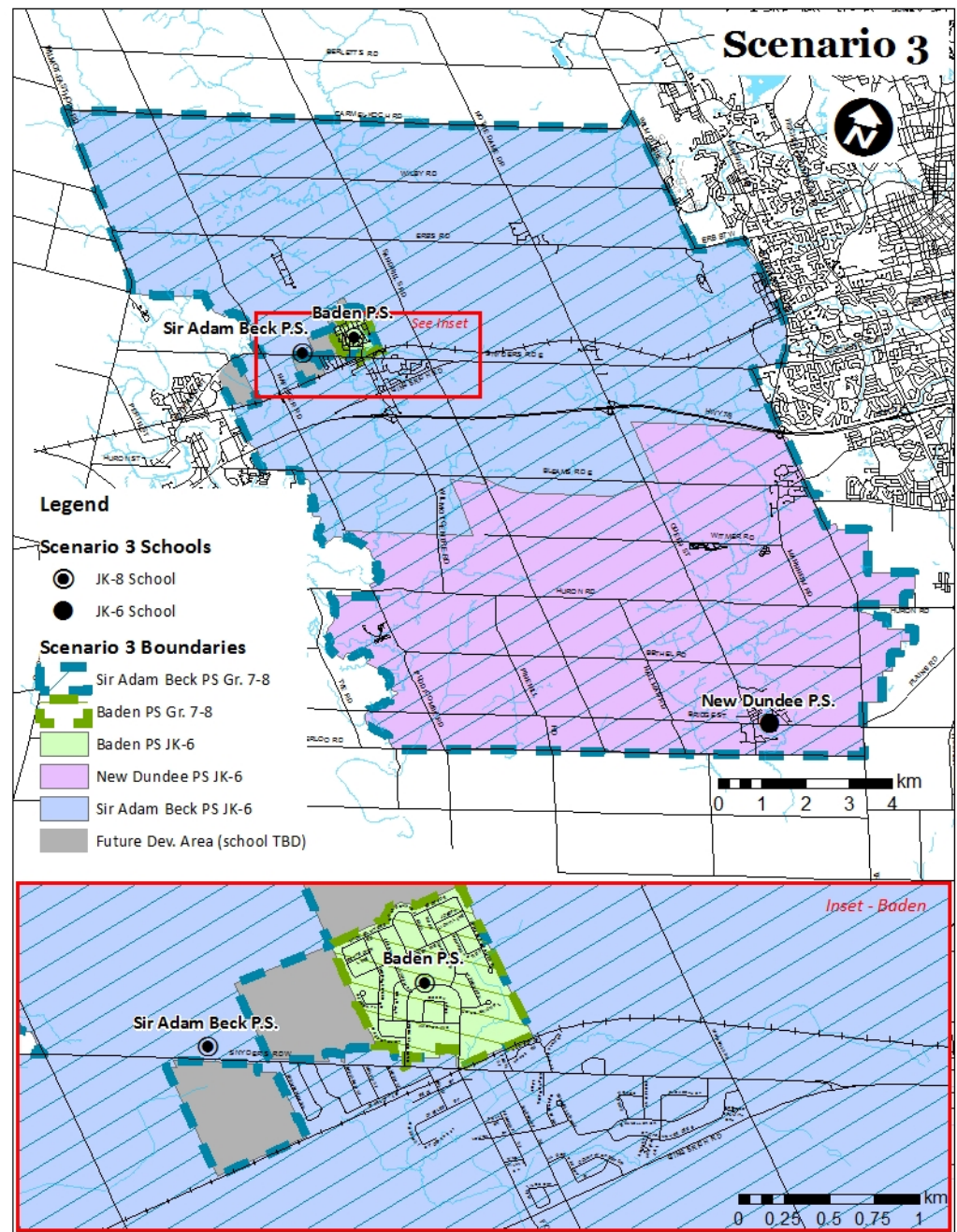
Summary

- Sir Adam Beck P.S. becomes JK-8 keeping own Gr. 6's, and receiving New Dundee P.S. Gr. 6's
- Baden P.S. remains JK-8 continues to provide Gr 7/8 for itself.

Infrastructure Implications

Sir Adam Beck P.S. require 4 classroom addition (earliest possible completion date Sept 2017).

Reduction in portables required at Baden P.S. (over time 8 -> 5->3).

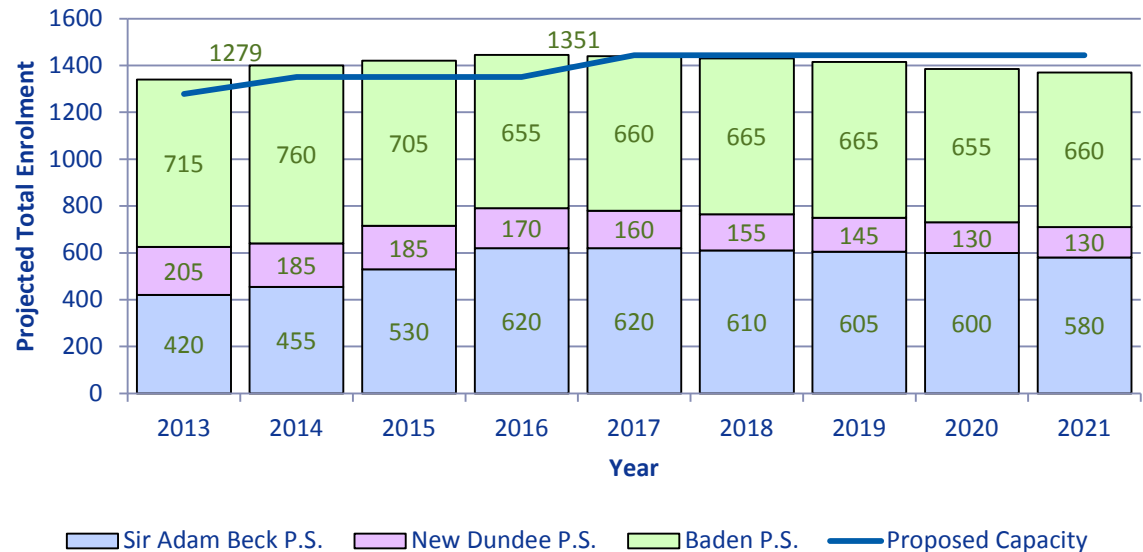


Scenario 3 Projections

School	2015/16 Capacity	New Cap.(req. approval)	Scenario 3 Total Capacity	Grades	Projected Total Students by Year			
					2015	2017	2019	2021
Baden PS	605	0	605	JK-8	705	660	665	660
New Dundee PS	236	0	236	JK-6	185	160	145	130
Sir Adam Beck	510	92	602	JK-8	530	620	605	580
Total	1351	92	1443		1420	1440	1415	1375

4 classroom addition at Sir Adam Beck P.S. to include:

- Science/Tech Rm
- Music Rm
- Art Rm
- 1 classroom



Draft Study Objectives vs Scenarios

Objective	Scenario 2	Scenario 3
To reduce enrolment at Baden Public School beginning in the 2015/16 school year	<ul style="list-style-type: none"> Enrolment at Baden P.S. reduced from 760 ->730 -> 711 (2014->2015->2016) 	<ul style="list-style-type: none"> Enrolment at Baden P.S. reduced from 760 ->706 -> 654 (2014->2015->2016)
To increase the number of students housed in permanent capacity within the study area in a cost-effective way, recognizing that there can be no additional capacity built prior to the 2017/18 school year	<ul style="list-style-type: none"> 3 classroom addition at Sir Adam Beck P.S. When completed will reduce number of portables in study from 9 to 6 	<ul style="list-style-type: none"> 4 classroom addition at Sir Adam Beck P.S. When completed will reduce number of portables in study area from 9 to 5

Draft Study Objectives vs Goals

Goal	Scenario 2	Scenario 3
To develop a solution that is long-term (approximately 10 years), taking into consideration current and future population density and demographics	<ul style="list-style-type: none"> Relocation of enrolment from Baden P.S. to Sir Adam Beck P.S. responds to current and future demographics within current approved residential development. Additional elementary accommodation necessary for anticipated future residential development (timing, scale currently unknown) 	<ul style="list-style-type: none"> Relocation of enrolment from Baden P.S. to Sir Adam Beck P.S. responds to current and future demographics within current approved residential development. Additional elementary accommodation necessary for anticipated future residential development (timing, scale currently unknown)
To minimize transitions for students where changes are proposed though grandfathering/phasing	<ul style="list-style-type: none"> Addition of Gr. 7/8 to Sir Adam Beck P.S. will be phased in gradually to minimize transitions New Dundee P.S. students continue to transition to Baden P.S. for Gr. 7/8. 	<ul style="list-style-type: none"> Addition of Gr. 7/8 to Sir Adam Beck P.S. will be phased in gradually to minimize transitions. Represent a change to New Dundee P.S. students who will attend a new school for Gr. 7/8.

Draft Study Objectives vs Goals Cont...

Goal	Scenario 2	Scenario 3
To strengthen the Board's business case for additional capacity funding for current students and as residential development plans progress in the Township of Wilmot	Proposed addition appropriately sized to accommodate the anticipated long term space needs from existing and approved development within Baden.	Proposed addition appropriately sized to accommodate the anticipated long term space needs from existing and approved development within Baden.

Draft Study Objectives vs Goals Cont...

Goal	Scenario 2	Scenario 3
<p>To provide equitable learning opportunities for students and staff by moving towards the following criteria (from Board Policy 3002 – Elementary School Size and Configuration)</p> <ul style="list-style-type: none"> • JK-6 facilities between 350 and 400 students (approx. 2 classes per grade) • JK-8 facilities between 500 and 650 students (approx. 2 classes per grade) • Minimizing the potential for schools with enrolments over 650 students 	<ul style="list-style-type: none"> • Both Baden P.S. and Sir Adam Beck P.S. become JK-8 facilities. • Baden P.S. enrolment 715 by 2017, 705 by 2021. • Sir Adam Beck P.S. enrolment 565 by 2017, 540 by 2021. • New Dundee P.S. remains below the recommended sizes in Policy 3002 	<ul style="list-style-type: none"> • Both Baden P.S. and Sir Adam Beck P.S. become JK-8 facilities. • Baden P.S. enrolment 655 by 2017, 660 by 2021. • Sir Adam Beck P.S. enrolment 625 by 2017, 585 by 2021. • New Dundee P.S. remains below the recommended sizes in Policy 3002

Draft Recommendations

- That the Grade 7, 8 boundary between Sir Adam Beck P. S. and Baden P.S. be modified to reflect Sir Adam Beck P.S becoming JK-7 for September 2015, and JK-8 September 2016.
- Board direct staff to establish transition committee to develop interim measures of accommodating Gr. 7/8 at Sir Adam Beck P.S. prior to the completion of an addition.
- Board direct staff to develop a business case for an X classroom addition at Sir Adam Beck and prioritize it through the Capital Planning process.
- Board direct staff to monitor enrolment at New Dundee P.S. and report back as appropriate.

Public Meeting #2

Tentatively scheduled for June 18th, 2014, WODSS Cafetorium 7:00 p.m. – 8:30 p.m.

Short Working Group meeting afterwards to review feedback.

What will be presented

- Preferred Scenario
- Recommendations
 - Size of proposed addition
 - Implementation (Grandparenting/phasing)

Meeting Schedule

Public Meeting # 2

- June 18th, 2014, WODSS Cafetorium 7:00 p.m.
– 8:30 p.m.

Working Group Meeting # 6

June 18th after public meeting

Report and Recommendations to Board

Fall 2014 – September or November