



Waterloo Region
District School Board

Baden Elementary Schools Boundary Study

Public Meeting #1

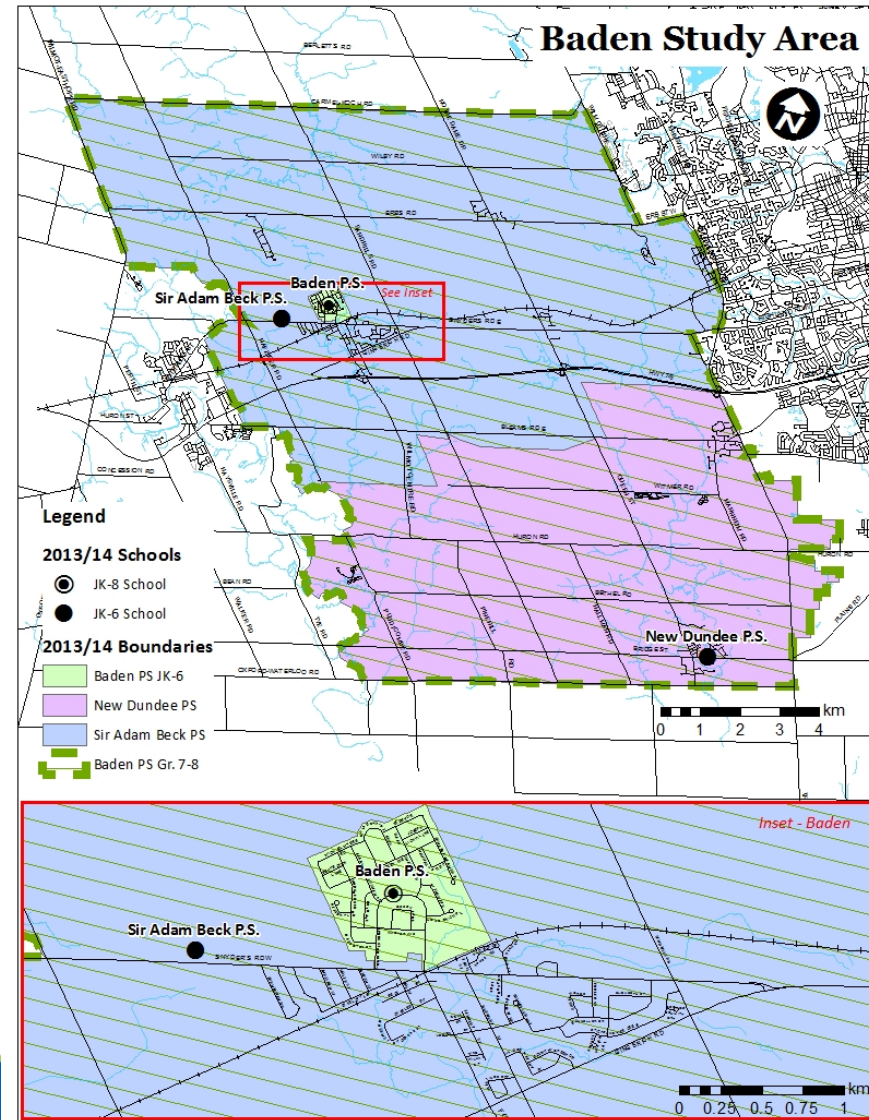
May 14, 2014

Agenda

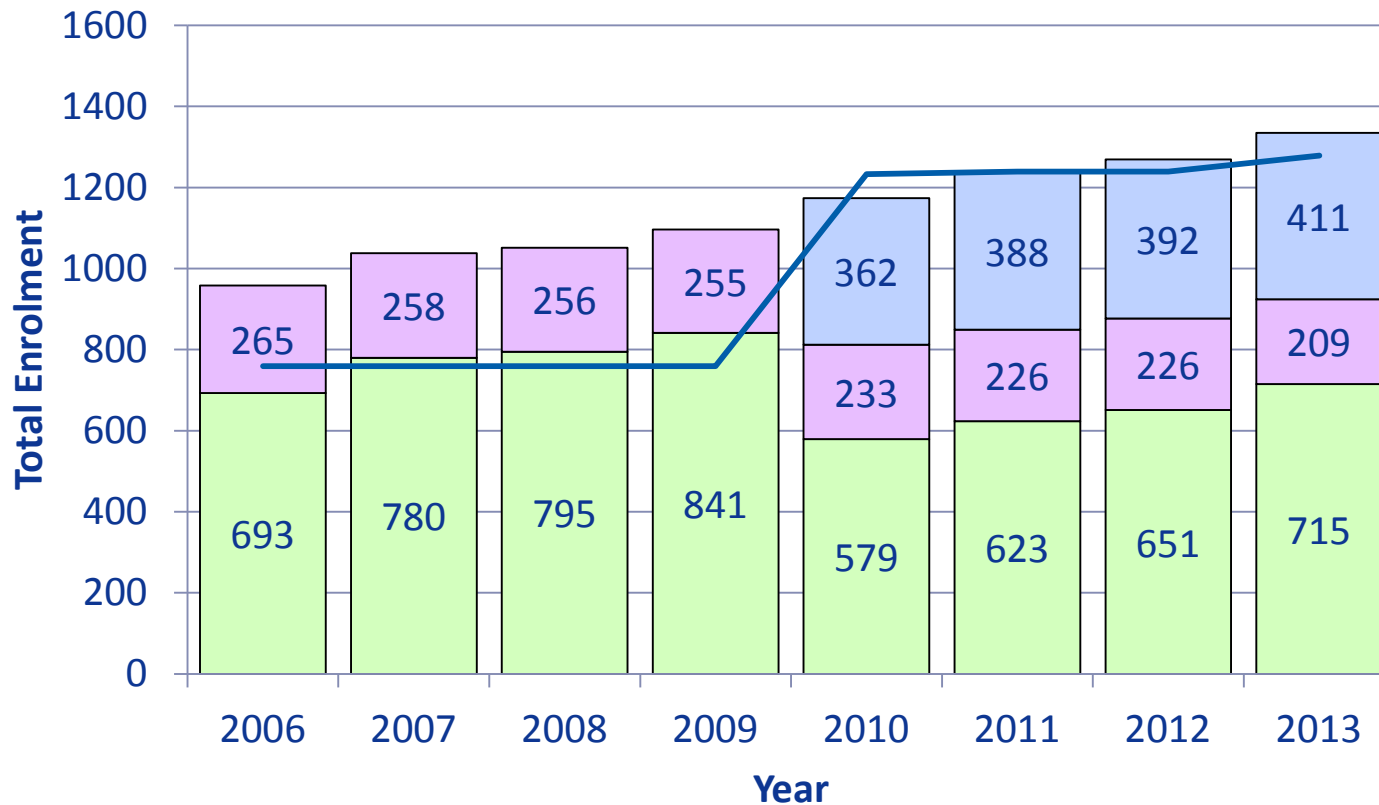
1. Welcome/Introductions
2. Background/Current Situation
3. Boundary Study Process
4. Study Goals & Objectives
5. Scenarios
6. Next Steps
7. Q & A

Study Area

School	Grades	Enrolment	Capacity	Portables	Year Built	Site Size (acres)
Baden PS	JK-8	715	581	8	2006	5.37
New Dundee PS	JK-6	209	224	0	1928	4.51
Sir Adam Beck PS	JK-6	411	474	0	2010	8.56
Total		1335	1279	8		18.44



Historic Study Area Enrolment 2006-2013

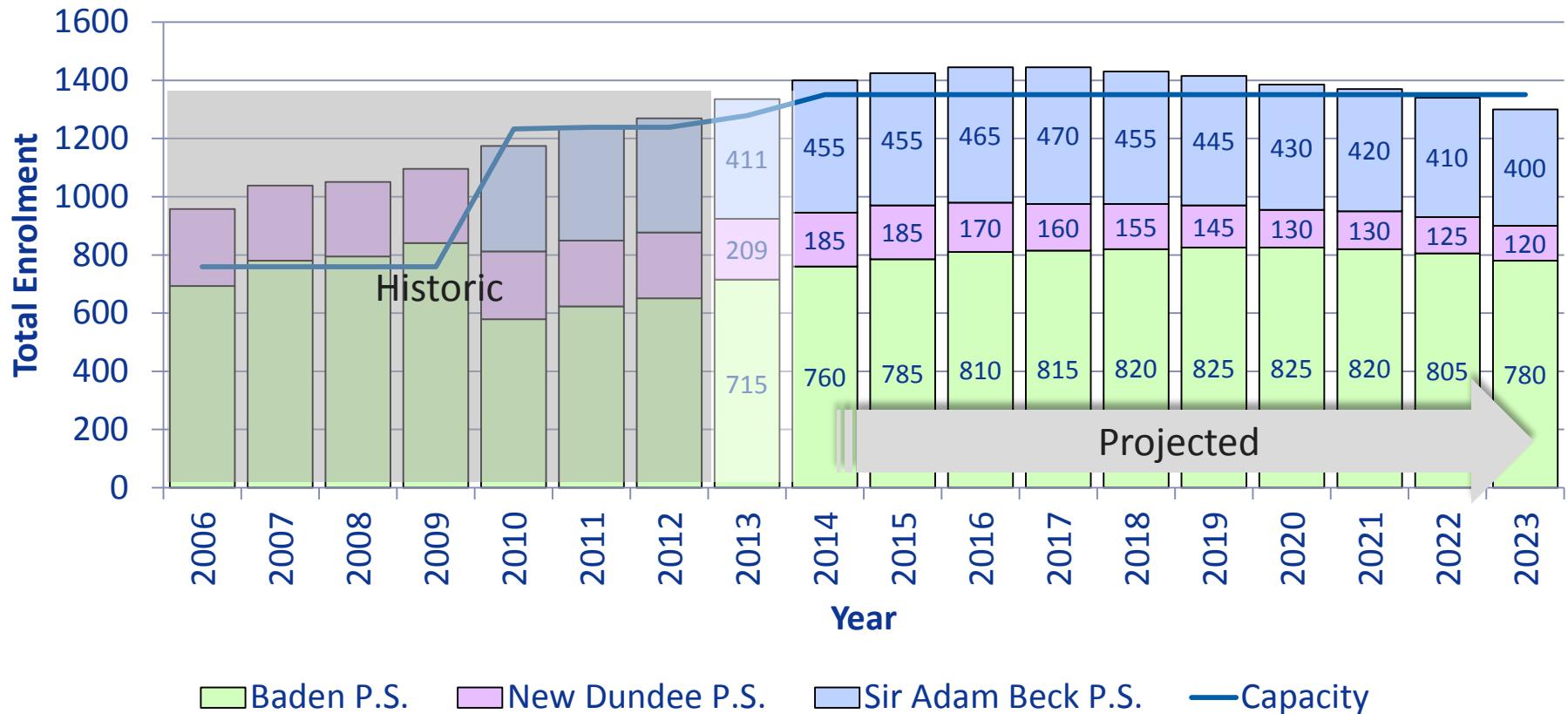


28%
Enrolment
Increase
2006-2013

575 New
Housing Units
in area 2006-
2013

Baden P.S. New Dundee P.S. Sir Adam Beck P.S. Capacity

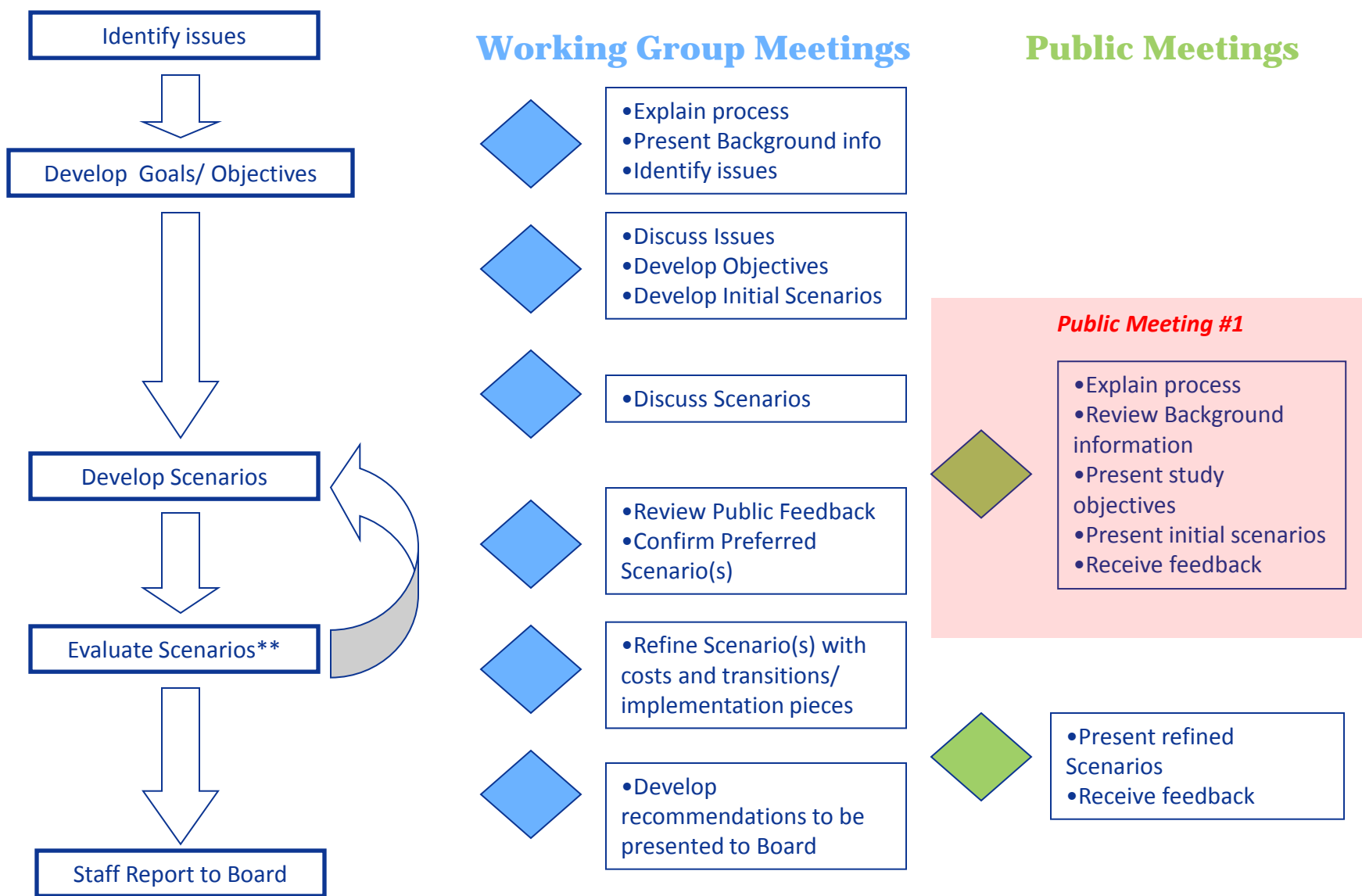
Projected Study Area Enrolment 2014-2023



8% Enrolment Decrease Projected by 2023

Projections are estimates based on several assumptions and use the most current data available. Only those units in plans of subdivision with development applications currently under review by the Township of Wilmot have been included in the projections.

Boundary Study Process



**Scenario development and evaluation may go through multiple iterations as scenarios are evaluated , and new ideas result from the evaluation.

Study Goals

- Goals explain what the Working Group **intends to achieve** through the boundary study process:
 - To address the capacity issues at the study area schools
 - To develop a strategy that is long-term (approximately 10 years), taking into consideration current and future population density and demographics
 - To minimize transitions for students where changes are proposed through grandfathering/phasing

Study Goals Continued...

- To strengthen the Board's business case for additional capacity funding for current students and as residential development plans progress in the Township of Wilmot
- To provide equitable learning opportunities for students and staff by moving towards the following criteria (from Board Policy 3002 – Elementary School Size and Configuration)
 - *JK-6 facilities between 350 and 400 students (approx. 2 classes per grade)*
 - *JK-8 facilities between 500 and 650 students (approx. 2 classes per grade)*
 - *Minimizing the potential for schools with enrolments over 650 students*

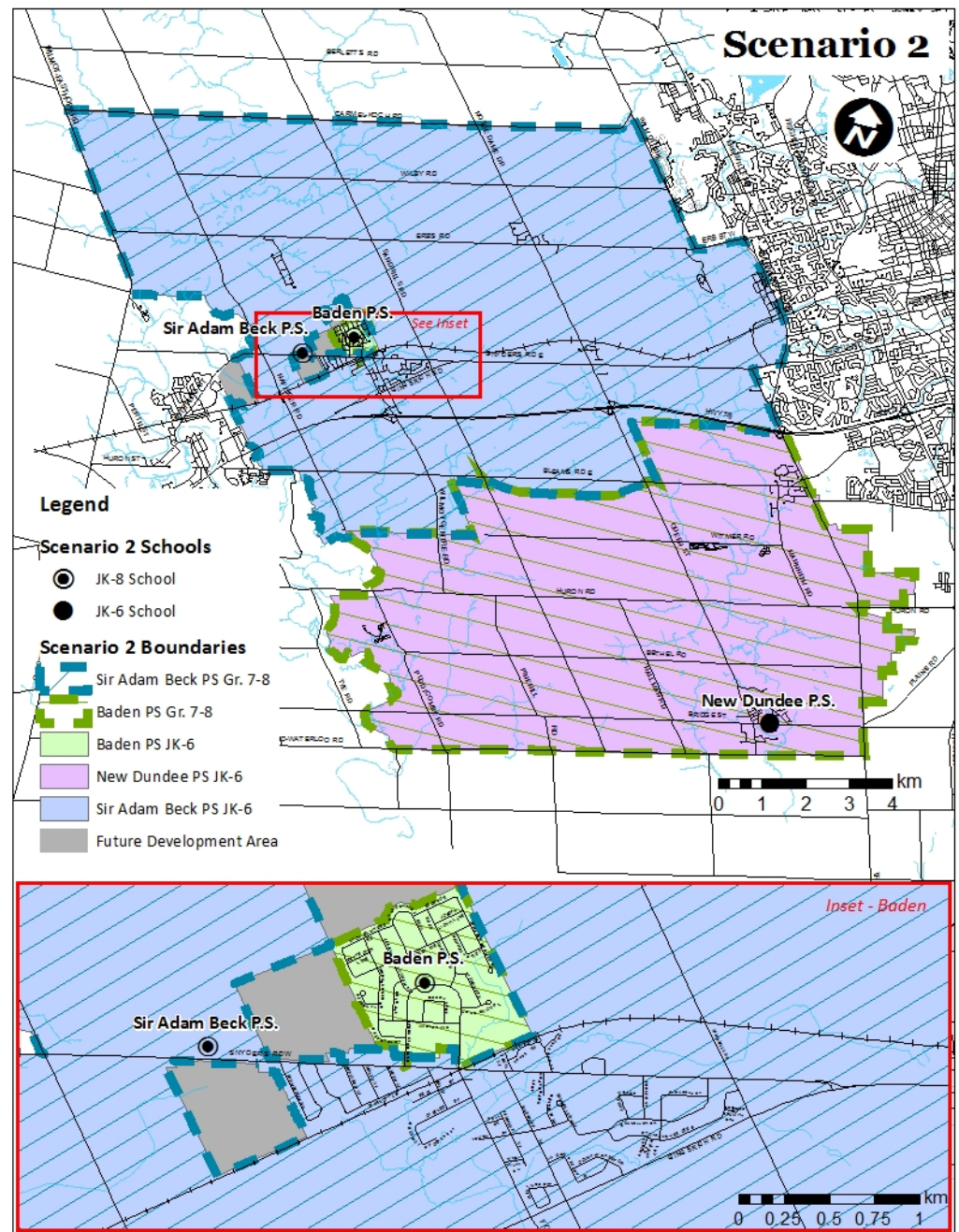
Study Objectives

- Objectives are **specific and measurable statements** of the goals. They provide the criteria to evaluate the scenarios:
 - To reduce enrolment at Baden Public School beginning in the 2015/16 school year
 - To increase the number of students housed in permanent capacity within the study area in a cost-effective way, recognizing that there can be no additional capacity built prior to the 2017/18 school year

Scenario 2

Description of Changes

- 2014/15
 - Current boundaries, no changes
- 2015/16
 - Sir Adam Beck PS adds Gr. 7 classes
 - Gr. 8 students in SAB boundary attend Baden PS
- 2016/17
 - Sir Adam Beck PS adds Gr. 8 classes (all Gr. 7-8 students within the SAB boundary attend SAB)
- 2017/18
 - First possible date for completion of a 3 classroom addition at Sir Adam Beck PS (*actual timing will be dependent on Board approval and Ministry approval and funding*)



Scenario 2 Projections

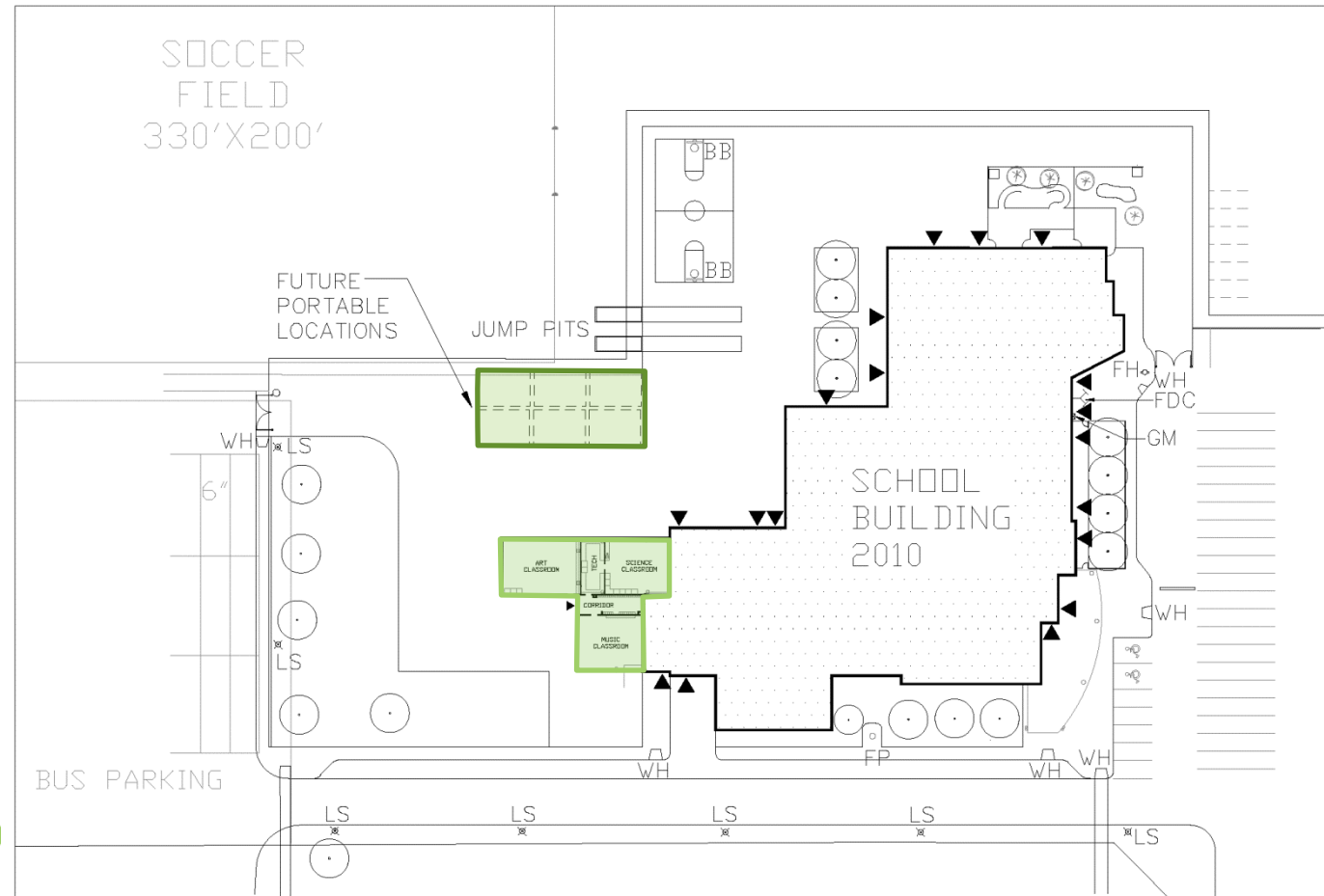
School	2015/16 Capacity	New Capacity (requires approval)	Scenario 2 Capacity	Projected Enrolment by Year											
				2015			2017			2019			2021		
				<i>JK-6</i>	<i>7-8</i>	<i>Total</i>	<i>JK-6</i>	<i>7-8</i>	<i>Total</i>	<i>JK-6</i>	<i>7-8</i>	<i>Total</i>	<i>JK-6</i>	<i>7-8</i>	<i>Total</i>
Baden P.S.	605	0	605	520	210	730	540	175	715	545	165	710	510	195	705
New Dundee P.S.	236	0	236	185		185	160		160	145		145	130		130
Sir Adam Beck P.S.	510	69	579	455	50	505	470	95	565	445	120	565	420	120	540
Total	1351	69	1420	1160	260	1420	1170	270	1440	1135	285	1420	1060	315	1375

Scenario 2 Sir Adam Beck PS Addition Concept

Sir Adam Beck Public School concept site plan

Targeted completion of 3 classroom addition at Sir Adam Beck P.S. for Sept. 2017 (first possible date). Addition may include:

- Science/Tech Rm
- Music Rm
- Art Rm



Scenario 2 Portable Requirements

Without addition at Sir Adam Beck PS

School	Scenario 2 Estimated # Portables (if no additions)			
	2015	2017	2019	2021
Baden P.S.	6	6	5	4
New Dundee P.S.	0	0	0	0
Sir Adam Beck P.S.	1	3	3	2
Total	7	9	8	6

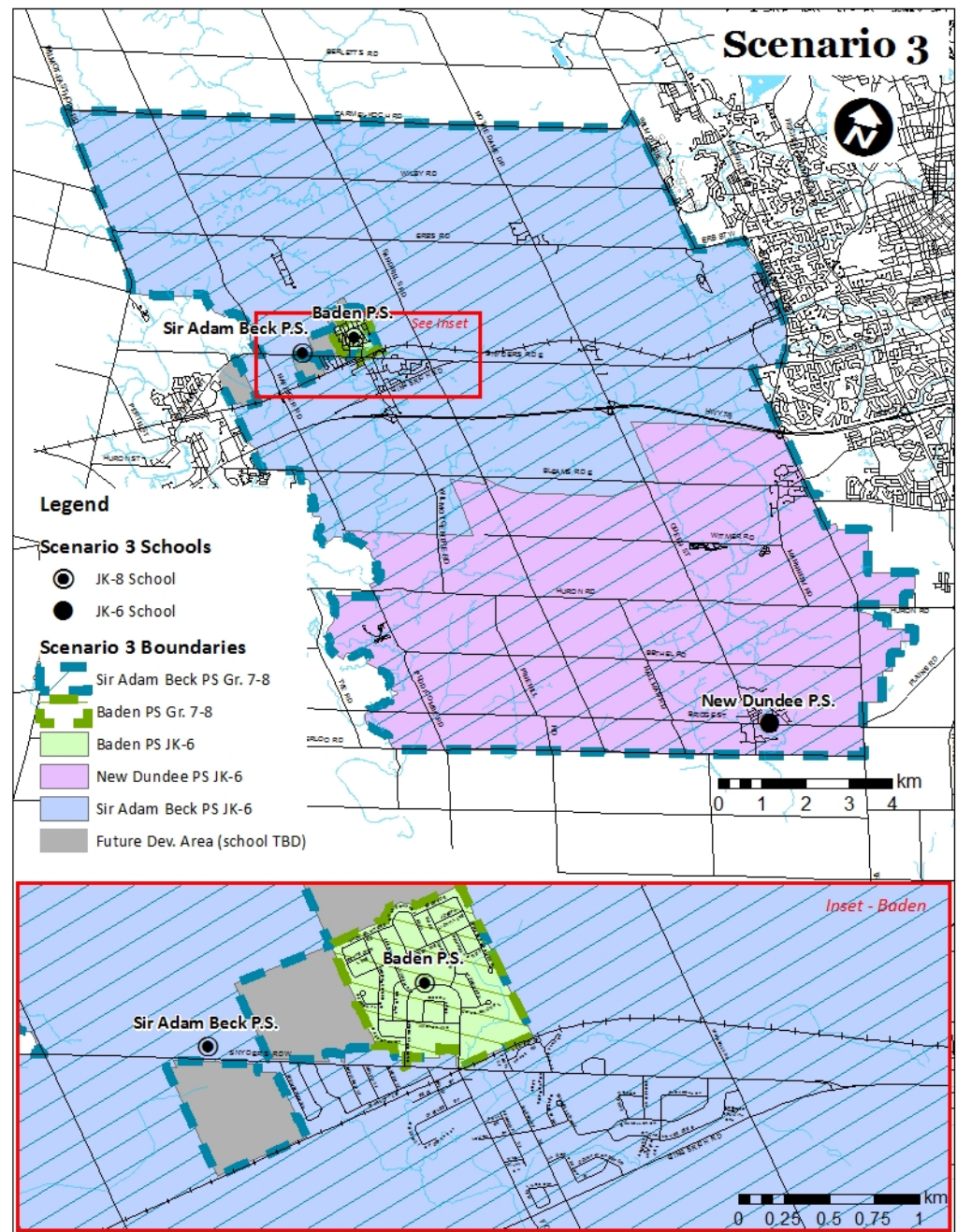
With **3 classroom addition** at Sir Adam Beck PS

- No portables projected at Sir Adam Beck PS
- Portables still projected at Baden PS

Scenario 3

Description of Changes

- 2014/15
 - Current boundaries, no changes
- 2015/16
 - Sir Adam Beck PS adds Gr. 7 classes, Gr. 7-8 boundary includes New Dundee PS area
 - Gr. 8 students in SAB and New Dundee PS boundaries attend Baden PS
- 2016/17
 - Sir Adam Beck PS adds Gr. 8 classes (all Gr. 7-8 students within the SAB Gr. 7-8 boundary attend SAB)
- 2017/18
 - First possible date for completion of a 4 classroom addition at Sir Adam Beck PS (*actual timing will be dependent on Board approval and Ministry approval and funding*)



Scenario 3 Projections

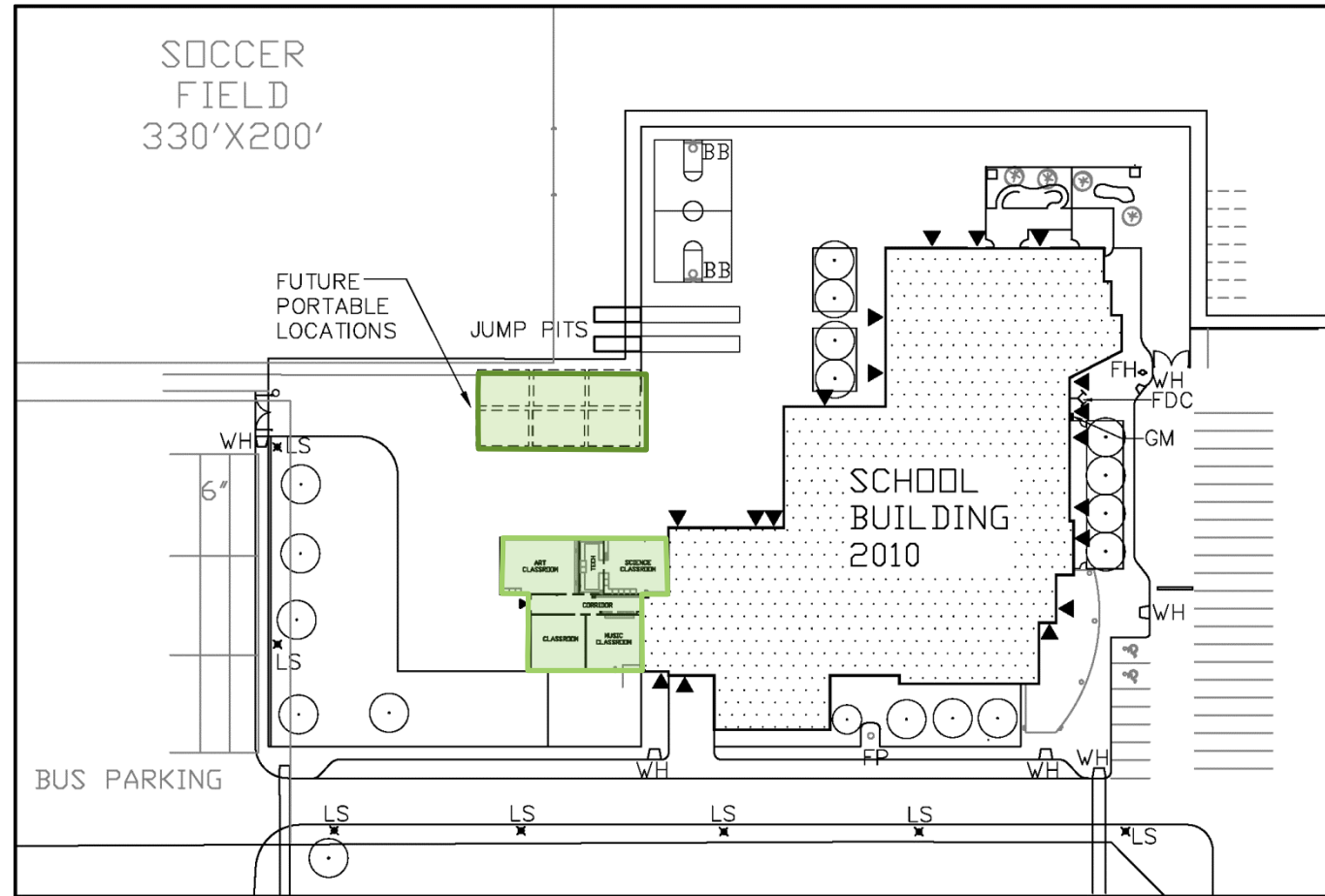
School	2015/16 Capacity	New Capacity (requires approval)	Scenario 3 Capacity	Projected Enrolment by Year											
				2015			2017			2019			2021		
				JK-6	7-8	Total	JK-6	7-8	Total	JK-6	7-8	Total	JK-6	7-8	Total
Baden P.S.	605	0	605	520	185	705	540	115	655	545	120	665	510	150	660
New Dundee P.S.	236	0	236	185		185	160		160	145		145	130		130
Sir Adam Beck P.S.	510	92	602	455	75	530	470	155	625	445	165	610	420	165	585
Total	1351	92	1443	1160	260	1420	1170	270	1440	1135	285	1420	1060	315	1375

Scenario 3 Sir Adam Beck PS Addition Concept

Sir Adam Beck Public School concept site plan

Targeted completion of 4 classroom addition at Sir Adam Beck P.S. for Sept. 2017 (first possible date). Addition may include:

- Science/Tech Rm
- Music Rm
- Art Rm
- Standard Classroom



Scenario 3 Portable Requirements

Without addition at Sir Adam Beck PS

School	Scenario 3 Estimated # Portables (if no additions)			
	2015	2017	2019	2021
Baden P.S.	5	4	4	3
New Dundee P.S.	0	0	0	0
Sir Adam Beck P.S.	2	5	4	3
Total	7	9	8	6

With 4 classroom addition at Sir Adam Beck PS

- Up to 1 portable projected at Sir Adam Beck PS
- Portables still projected at Baden PS

Next Steps

- Working Group reviews feedback and refines scenarios
- **Public Meeting # 2:** Wednesday June 18, 2014, 7:00 - 8:30 p.m. Waterloo-Oxford District Secondary School, Cafetorium (Tentative)
- **Fall 2014:** Report and recommendations to the Board of Trustees for a final decision

Website



Planning Department

Login

Staff Site

Search

Home

About

Trustees

Programs & Services

Schools

Careers

Staff

Planning Department

[WRDSB Departments Sites](#) > [Planning Department](#) > [Boundary Studies](#) > [Baden Elementary Schools Boundary Study](#)

Baden Elementary Schools Boundary Study

Schools Involved

- [Baden Public School](#)
- [New Dundee Public School](#)
- [Sir Adam Beck Public School](#)

Background

At the [January 20, 2014](#) Committee of the Whole meeting of the Waterloo Region District School Board, Trustees voted in favour of the commencement of a boundary study to investigate options to balance enrolment between Baden, New Dundee and Sir Adam Beck Public Schools; to be called the Baden Elementary Schools Boundary Study.

Minutes from the January 20, 2014 Committee of the Whole meeting available [here](#)

Timing

It is anticipated that this [boundary study process](#) will be completed by the fall of 2014. No changes would be recommended to take place before September 2015.

2013/2014 Boundaries

The following maps demonstrate the study area as well as the current school attendance boundaries:

- [Study Area](#)
- [Baden Public School Attendance Area](#)
- [New Dundee Public School Attendance Area](#)
- [Sir Adam Beck Public School Attendance Area](#)

Public Meeting Announcements, Presentations & Minutes

Pages

- [Accommodation Reviews and Boundary Studies](#)
- [About Planning](#)
- [School Boundary and Location Maps](#)
- [Status of Approved Projects](#)
- [Accommodation Reviews](#)
- [Boundary Studies](#)
 - [Baden Elementary Schools Boundary Study](#)
 - [Completed Boundary Studies](#)
- [Active and Safe Routes to School](#)
- [Education Development Charges](#)
- [Disposition of Surplus School Sites/Land](#)
- [Facility Partnerships](#)

Questions?

boundaryfeedback@wrdsb.on.ca

519-570-0003 ext. 4419