

# **Baden Elementary Schools**

## **Boundary Study**

### **Working Group Meeting #1**

March 3, 2014

Baden Public School

4:30 – 6:00 pm



Waterloo Region  
District School Board

# Agenda

- 1. Welcome/Introductions**
- 2. Explanation of Boundary Study Process**
  - a. Working Group Meetings/Role**
  - b. Setting Objectives**
  - c. Scenario Development**
  - d. Public Meetings**
- 3. Study Purpose and Issues Identification**
- 4. Draft Goals/Objectives**
- 5. Meeting schedule and location(s)**
- 6. Roundtable**



# What is a Boundary Study?

The WRDSB considers a School Boundary Study when considering a change to one or more school attendance areas. There can be a number of reasons for a study:

- Changing the grade structure of an elementary school – this would include changing an elementary school from a JK-6 format to a composite school with JK-8;
- Balancing enrolment and facilities – one school may have too many students for its capacity and another may have too few;
- After municipalities approve new residential development, the area needs to be assigned to a school where capacity exists;
- Opening of a new school and establishing the new boundary and adjusting boundaries of the existing schools in the area



# What is role of the Working Group members ?

- The Working Group will:
  - Identify and discuss issues and opportunities of the individual school communities and the broader community
  - Set study objectives
  - Develop boundary options
  - Evaluate boundary options against study objectives
  - Act as a liaison between the Working Group and the school communities



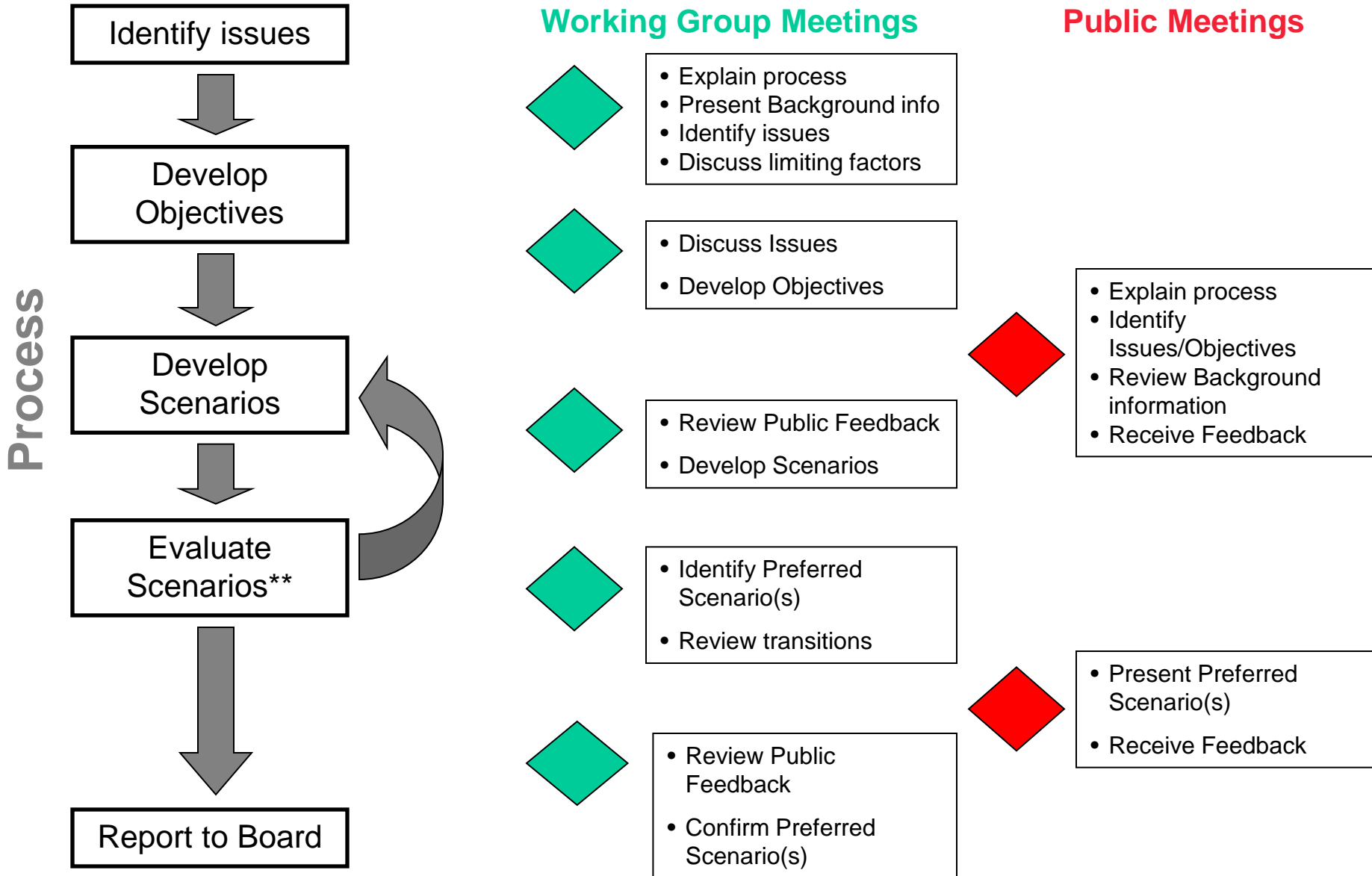
# Working Group Membership

## The Working Group consists of:

- Up to 2 parents from each school
- The principal from each school
- Planning Staff
- The school area superintendent
- Local Municipal representation (Wilmot Planning Staff)



# Boundary Study Process



\*\*Scenario development and evaluation may go through multiple iterations as scenarios are evaluated , and new ideas result from the evaluation.

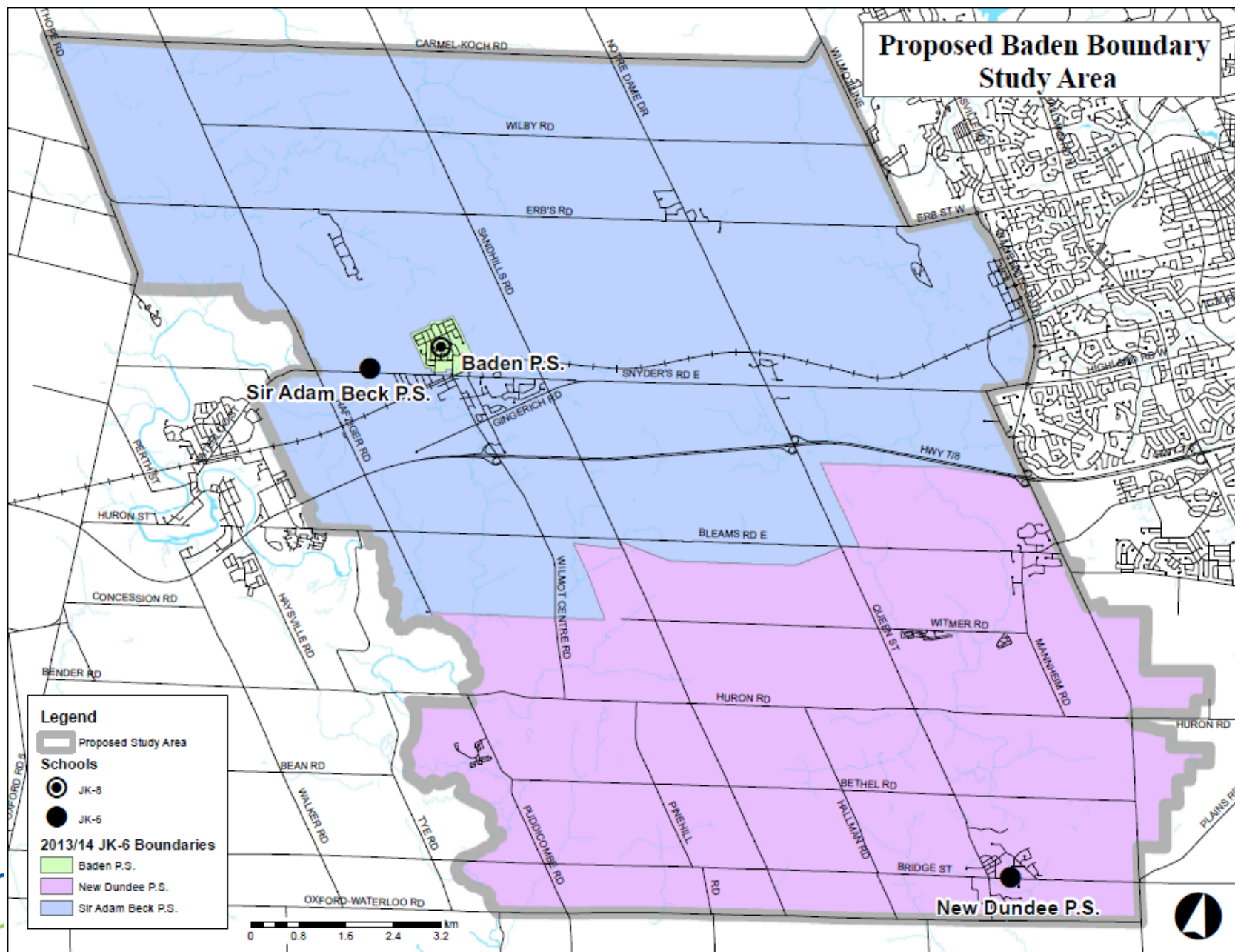
## Purpose and Issues

To support the long-term elementary school accommodation needs of the Baden community

The issues to be examined in this area include:

- Elementary program model/location (JK-6, JK-8)
- Enrolment/Capacity of existing schools
- School boundaries/walking distances
- Transition plan for existing students

# Study Area





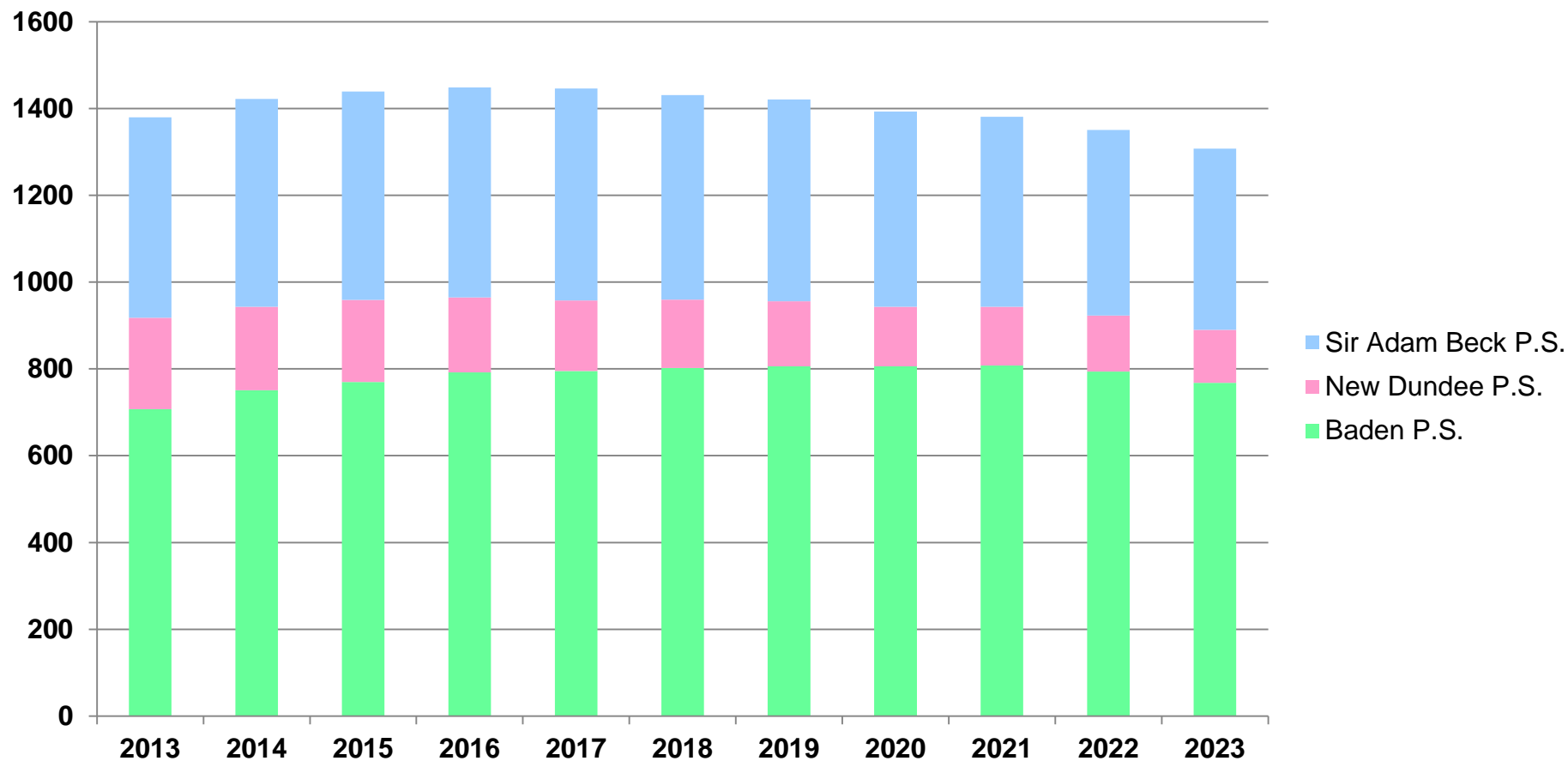
## Current Enrolment and Capacity

| School             | Built Capacity<br>(2013) | Portables | Enrolment – Oct.<br>2013 Unofficial<br>Total | % Capacity<br>(Total) |
|--------------------|--------------------------|-----------|--|-----------------------|
| Baden P.S.         | 581                      | 8         | 719  | 124%                  |
| Sir Adam Beck P.S. | 474                      | 0         | 410  | 86%                   |
| New Dundee P.S.    | 224                      | 0         | 210  | 94%                   |
| <b>TOTAL</b>       | <b>1279</b>              | <b>8</b>  | <b>1339</b>                                  | <b>105%</b>           |



# Projected Enrolment

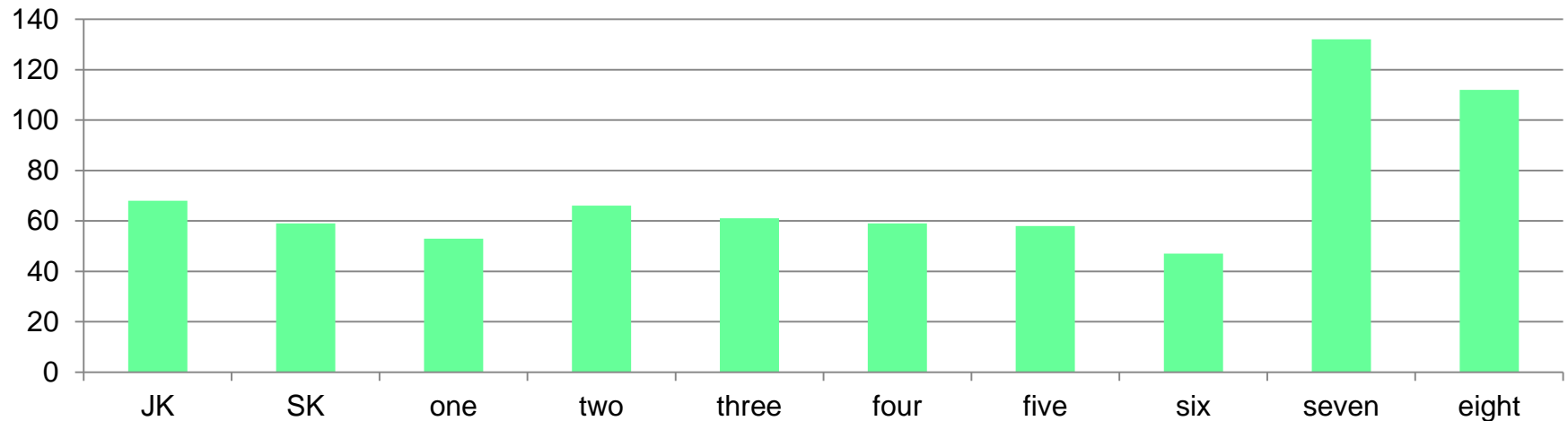
## Baden Boundary Study Status Quo Projection



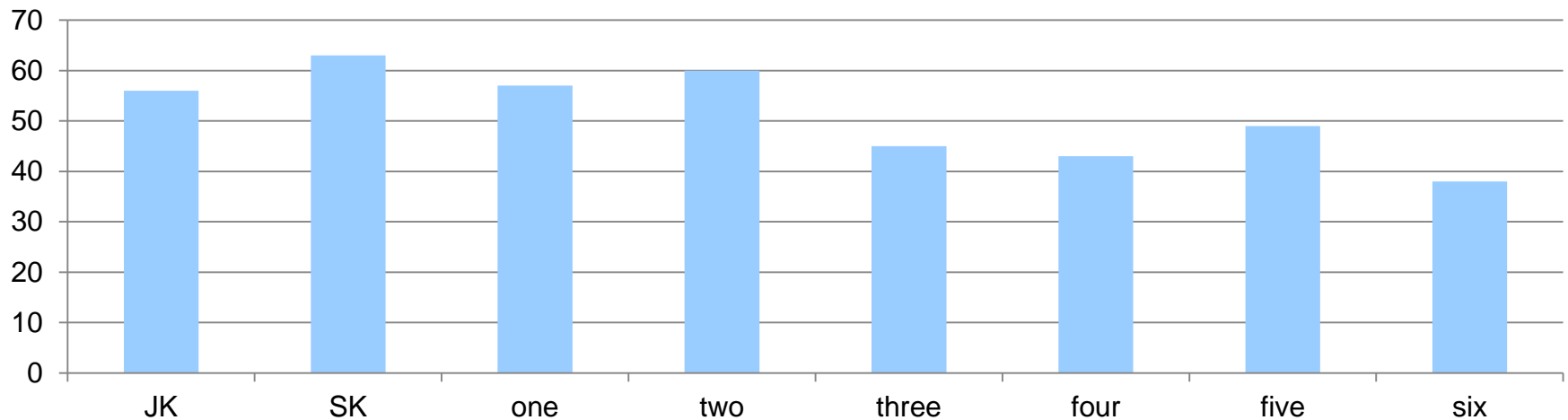
| School             | Built Capacity | 2013        | 2014        | 2015        | 2016        | 2017        | 2018        | 2019        | 2020        | 2021        | 2022        | 2023        |
|--------------------|----------------|-------------|-------------|-------------|-------------|-------------|-------------|-------------|-------------|-------------|-------------|-------------|
| Baden P.S.         | 581            | 707         | 751         | 770         | 792         | 795         | 802         | 806         | 806         | 808         | 794         | 768         |
| New Dundee P.S.    | 224            | 211         | 192         | 189         | 173         | 163         | 158         | 150         | 137         | 135         | 129         | 122         |
| Sir Adam Beck P.S. | 474            | 462         | 479         | 480         | 484         | 488         | 471         | 465         | 450         | 438         | 428         | 418         |
| <b>Total</b>       | <b>1279</b>    | <b>1380</b> | <b>1422</b> | <b>1439</b> | <b>1449</b> | <b>1446</b> | <b>1431</b> | <b>1421</b> | <b>1393</b> | <b>1381</b> | <b>1351</b> | <b>1308</b> |

# Enrolment – Grade Profiles

## Baden P.S. 2013 Enrolment Profile

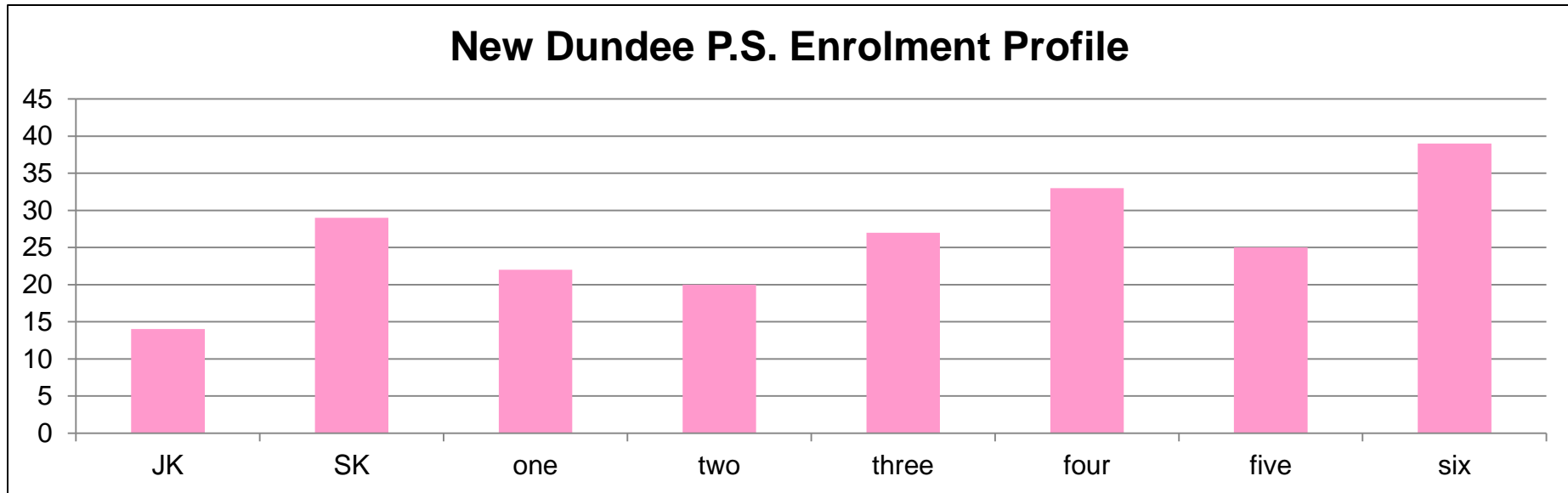


## Sir Adam Beck P.S. 2013 Enrolment Profile



# Enrolment – Grade Profiles

**New Dundee P.S. Enrolment Profile**



## Draft Issues

- Enrolment/Capacity at Baden P.S.
- Future Development
- Parking and parent pick-up/drop-off
- Availability/distribution of French Immersion program
- Grades 7-8 location
- Role/proximity WODSS

## Possible Solutions

- Moving/redistributing 7/8 program
- Moving/redistributing French Immersion program
- JK-6 boundary changes



# Draft Objectives - Considerations

- *Board Policy 3002 - Elementary School Size and Configuration*
  - *JK-6 facilities between 350 and 400 students (approx. 2 classes per grade)*
  - *JK-8 facilities between 500 and 650 students (approx. 2 classes per grade)*
  - *Grades 7-8 (approx. 2.5 classes/grade)*
- *Board Policy 4009 – Student Transportation*
  - *Transportation may be provided for students residing beyond the following distances from their home school*
    - *JK/SK 800m*
    - *Gr. 1-8 1600m*
- *Administrative Procedure 1000 – Partial French Immersion*
- *Student Transitions*



## Next Steps

- Issues Discussion
- Draft Objectives
- Scenario Development/Evaluation
- Public/Community meetings



## Meeting Dates

- Working Group # 2: Thursday March 20, 2014, 5:00-6:30 p.m., Sir Adam Beck P.S.
- Working Group #3: Thursday April 3, 2014, 5:00-6:30 p.m., New Dundee P.S.
- Public Meeting # 1: TBD





## Contact Information

- Website: [www.wrdsb.ca](http://www.wrdsb.ca)
  - » About Us>Planning Department>Boundary Studies
  - » Baden Boundary Study
- E-mail: [boundaryfeedback@wrdsb.on.ca](mailto:boundaryfeedback@wrdsb.on.ca)
- Phone: 519-570-0003 ext. 4419

