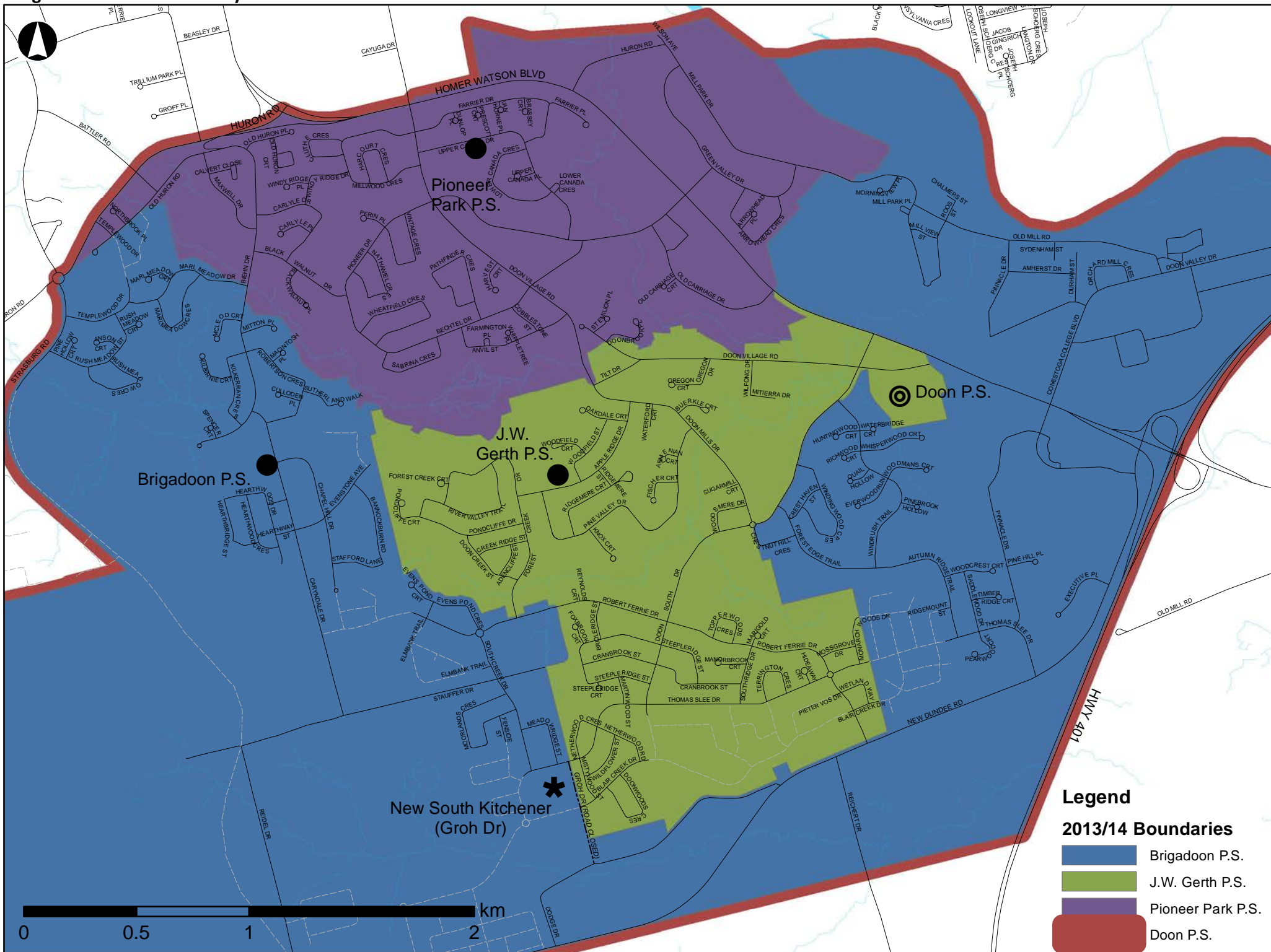


Figure 1: Doon South Study Area



Legend

Scenario 14 Schools

- JK-6
- ⊙ 7-8

Scenario 14 JK-6 Boundaries

- Brigadoon P.S. JK-6
- J.W. Gerth P.S. JK-6
- Pioneer Park P.S. JK-6
- New South Kit JK-6
- Development Area - School TBD

2013/14 Boundaries

0 0.5 1 km

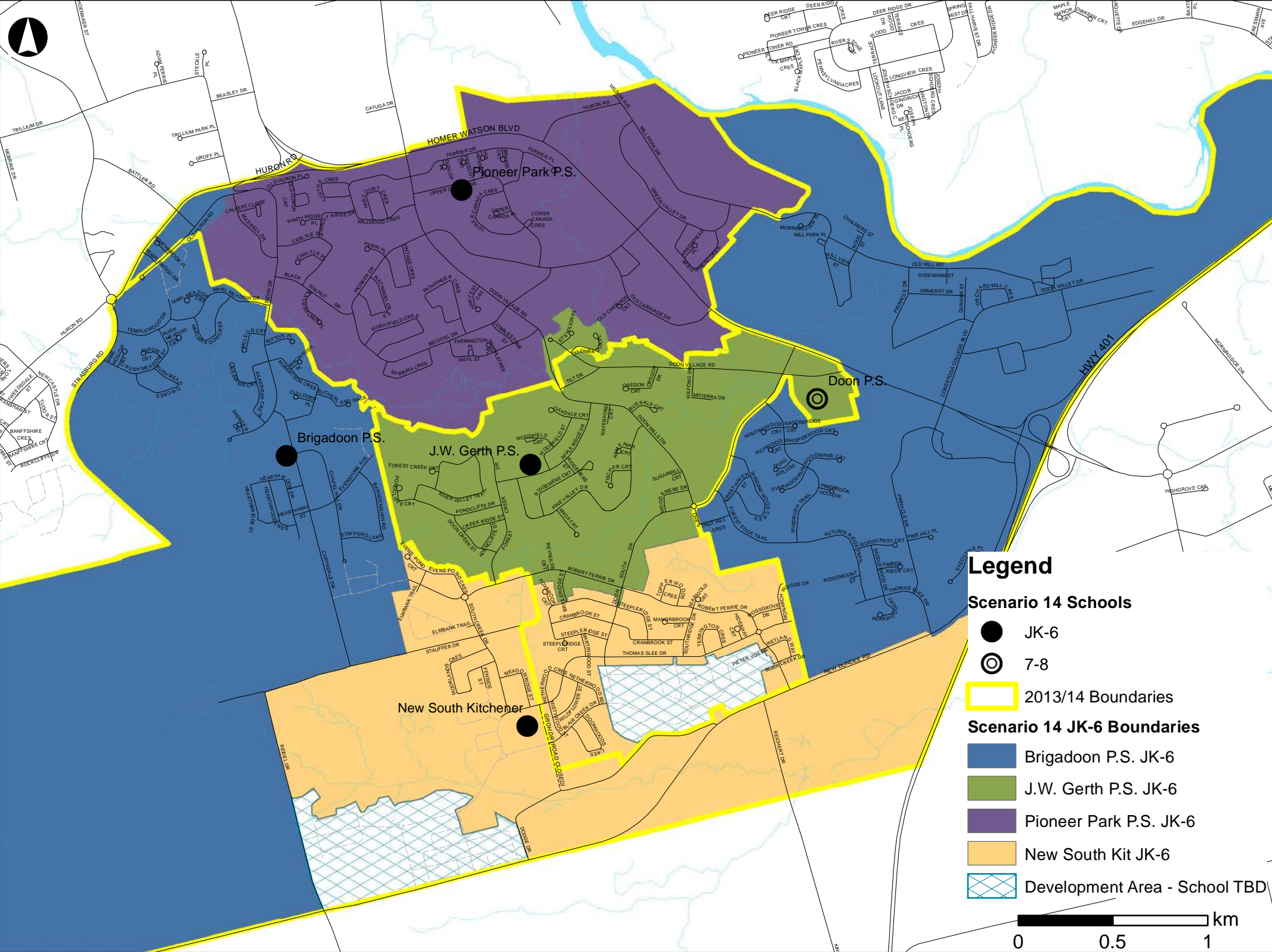


Figure 3: Scenario 14 Proposed 7-8 Boundaries

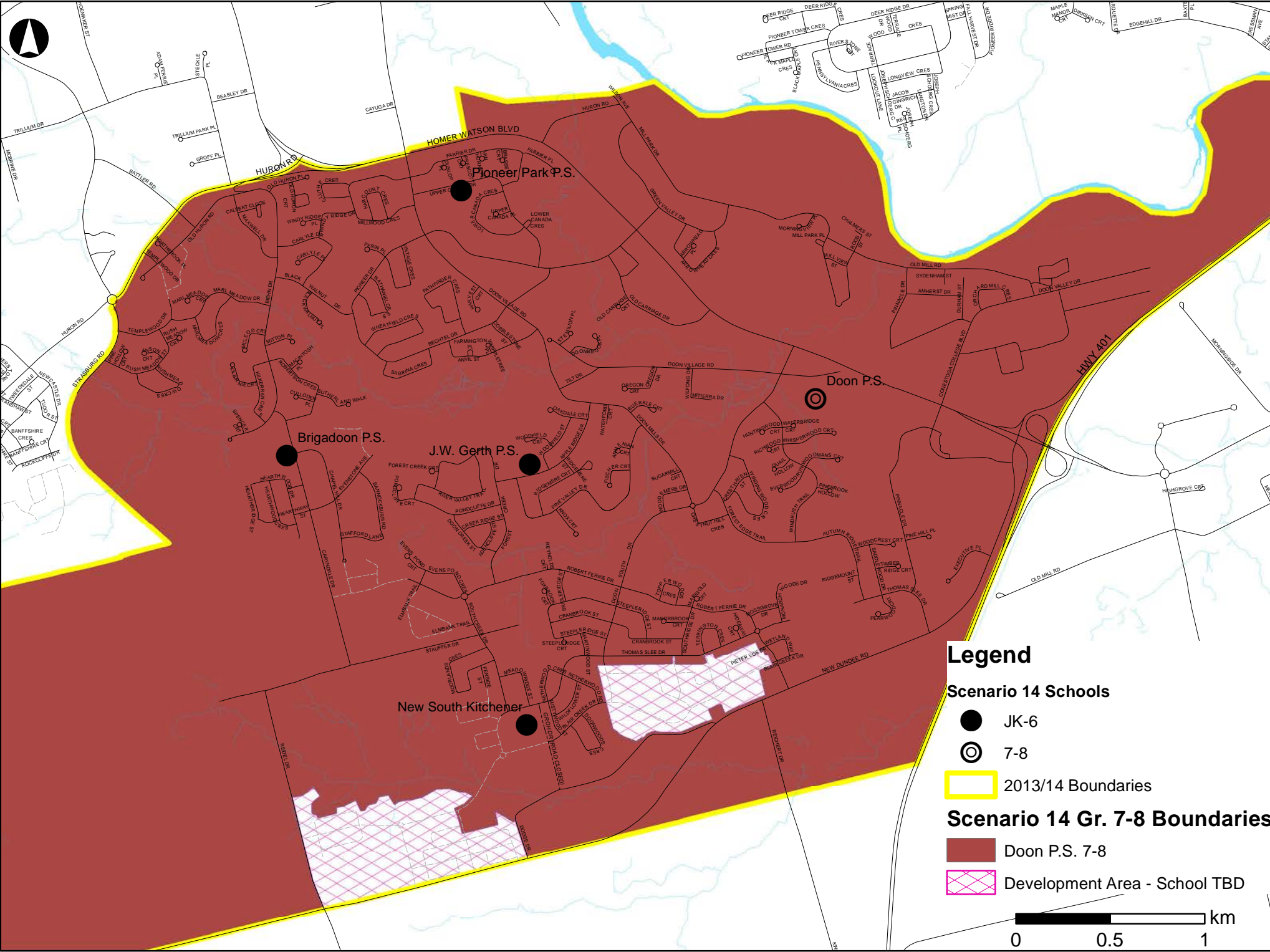


Figure 4: Scenario 16 Proposed JK-6 Boundaries

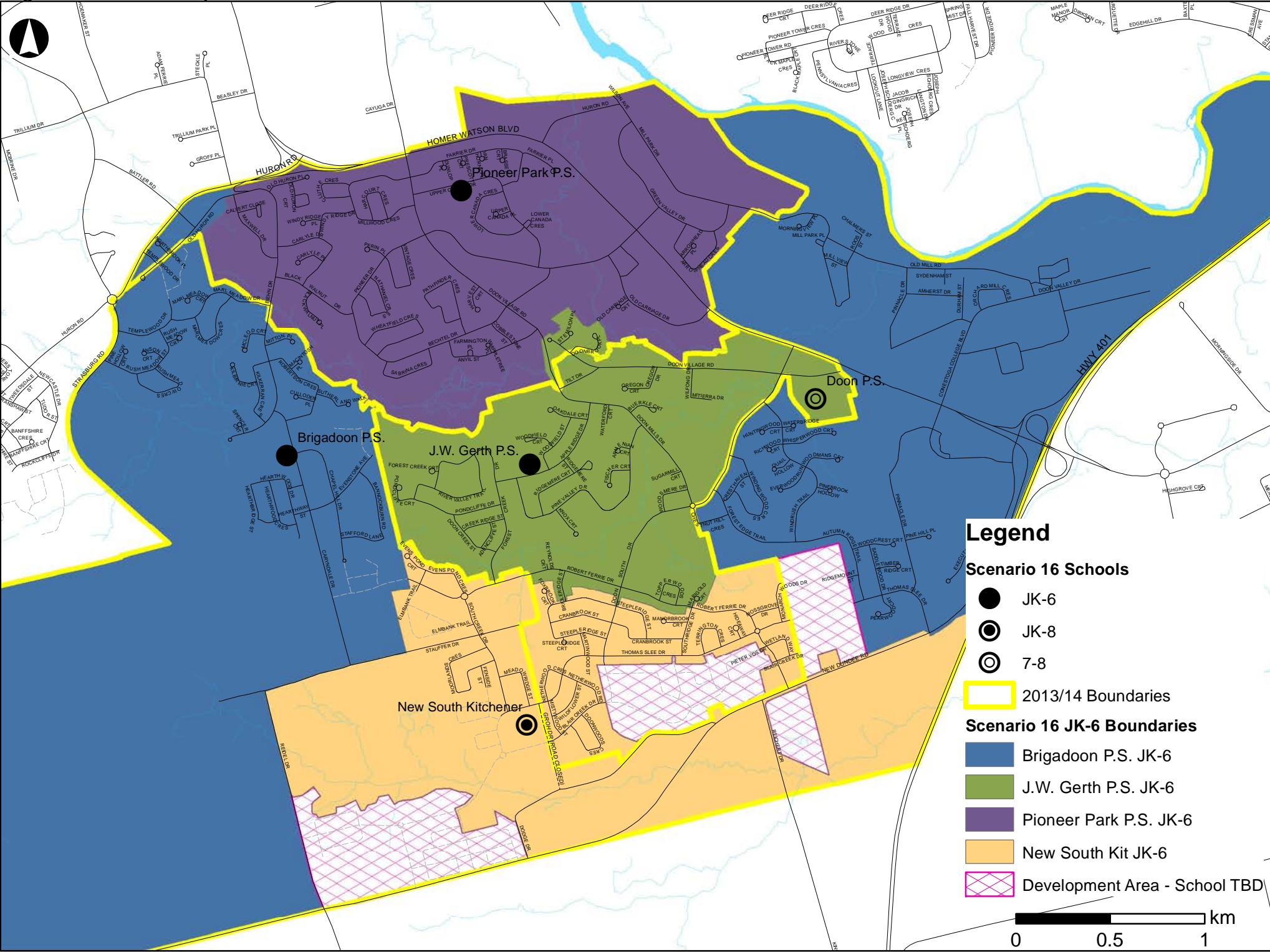
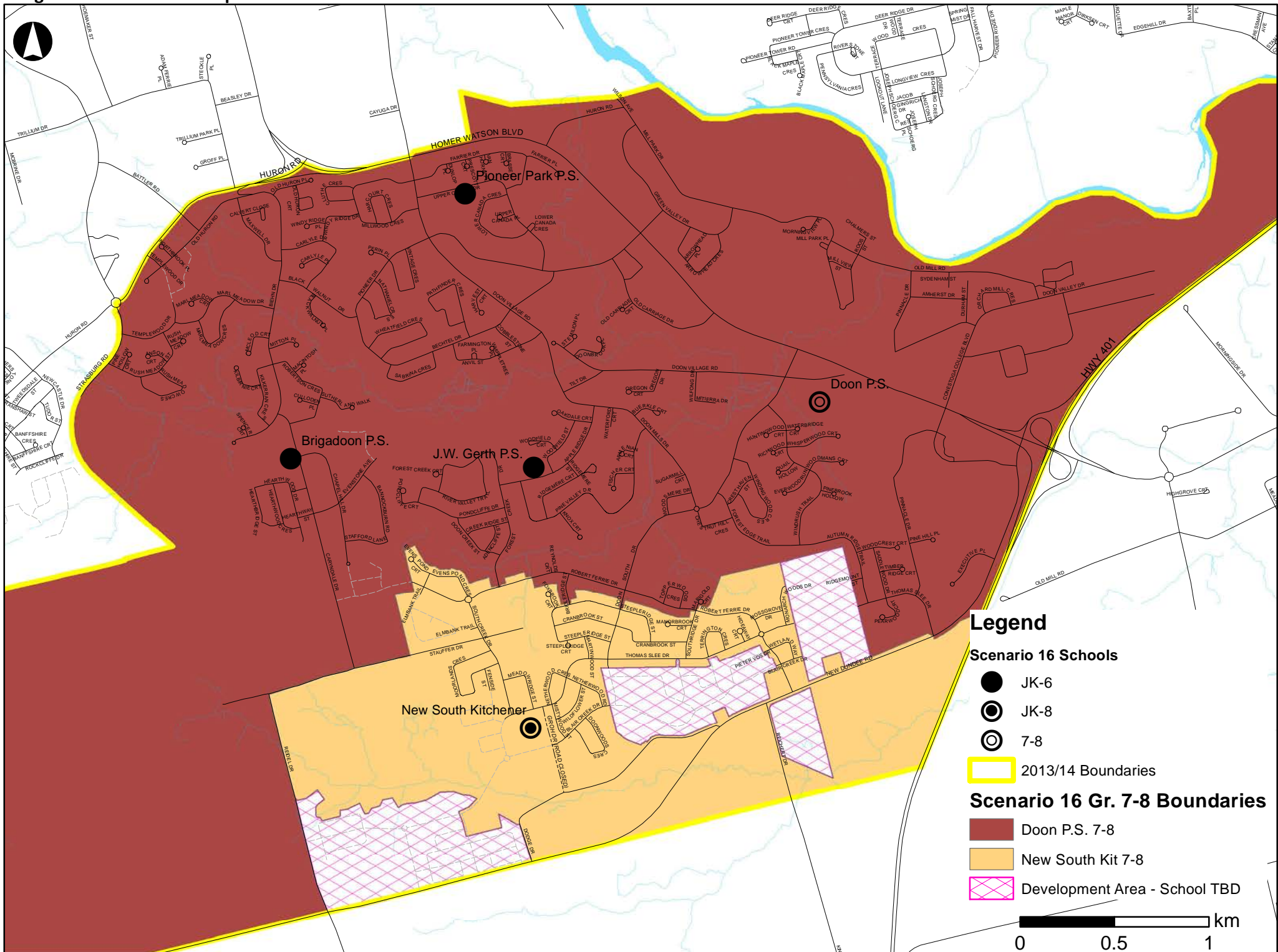


Figure 5: Scenario 16 Proposed 7-8 Boundaries



Legend

Scenario 16 Schools

- JK-6
- ⊙ JK-8
- ⊙ 7-8
- 2013/14 Boundaries

Scenario 16 Gr. 7-8 Boundaries

- Doon P.S. 7-8
- New South Kit 7-8
- ▨ Development Area - School TBD

0 0.5 1 km

Figure 6: Proposed new South Kitchener (Groh Drive) JK-8 boundary under Scenario 16

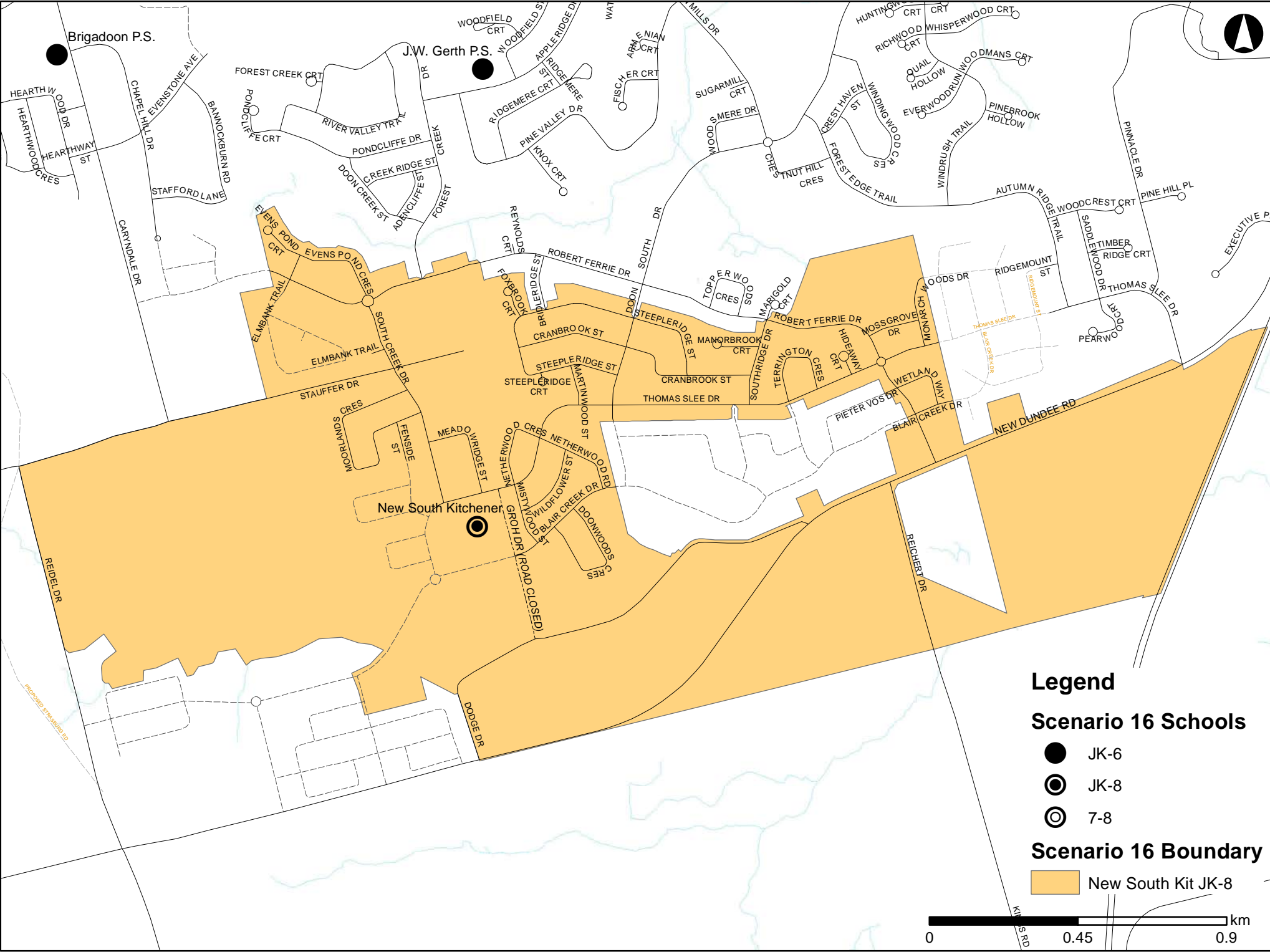
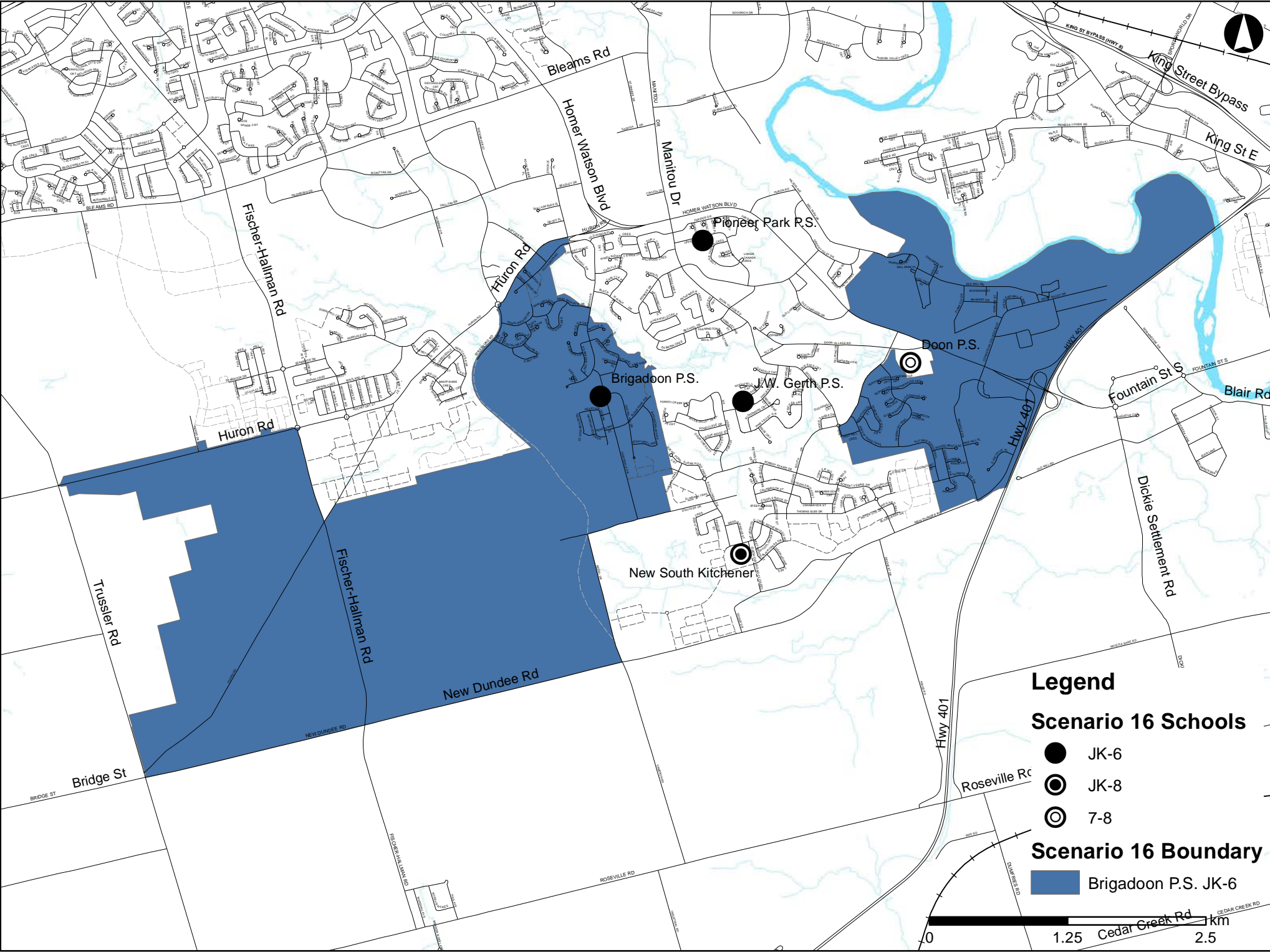


Figure 7: Proposed Brigadoon Public School Boundary (JK-6) under Scenario 16



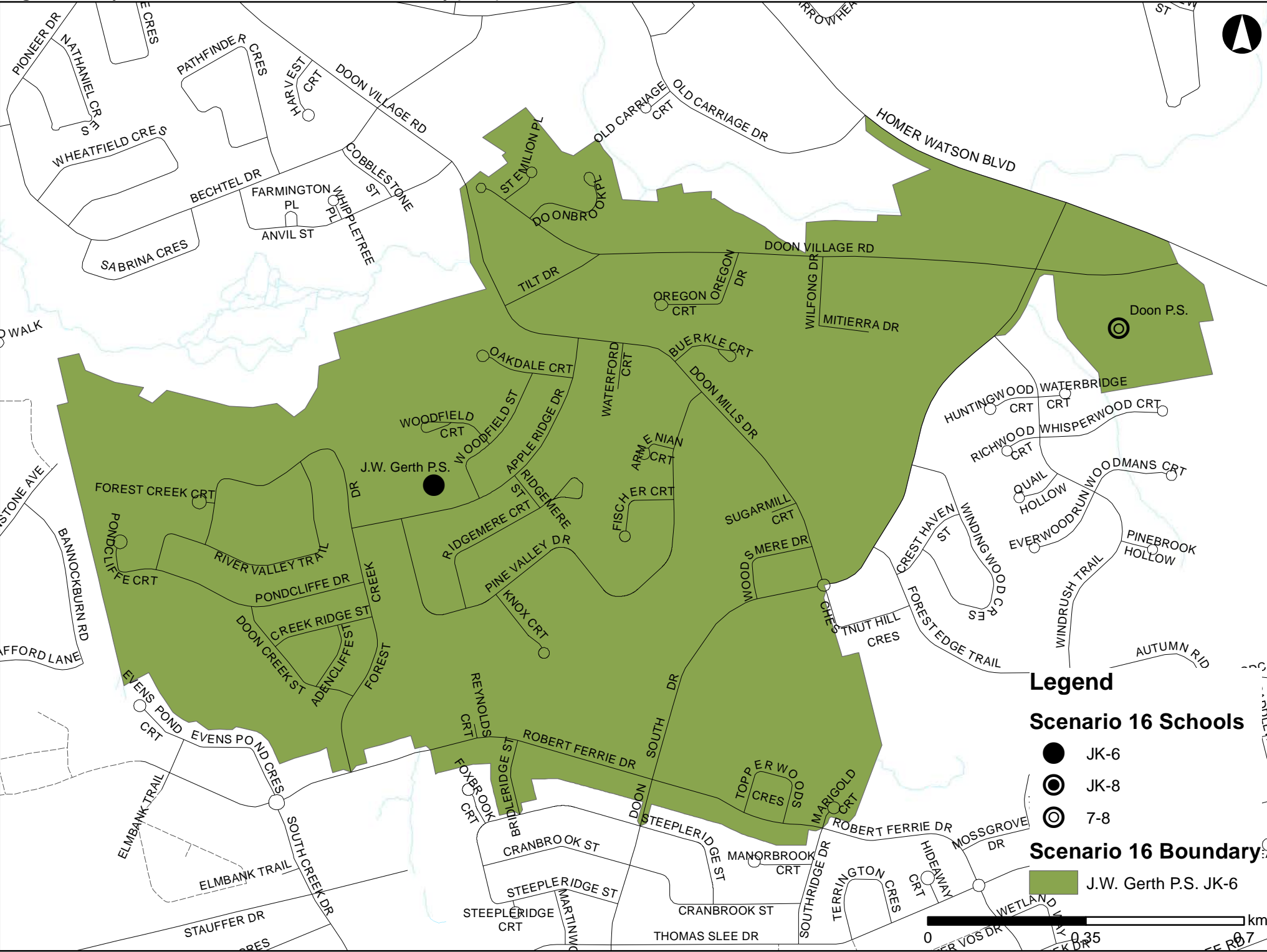
[illegible]

Figure 10: Affected area from Pioneer Park to J.W. Gerth Public School under Scenario 16

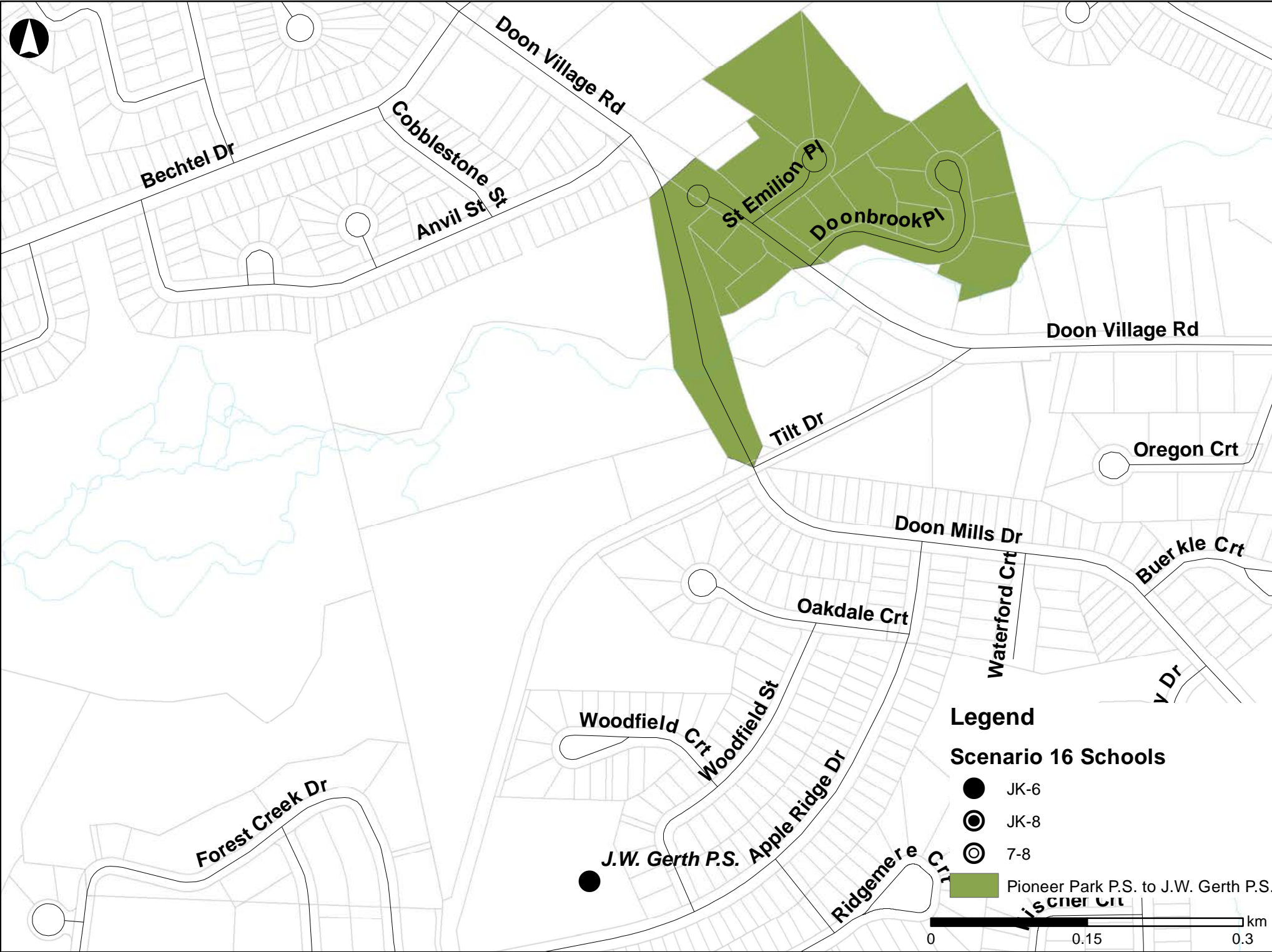
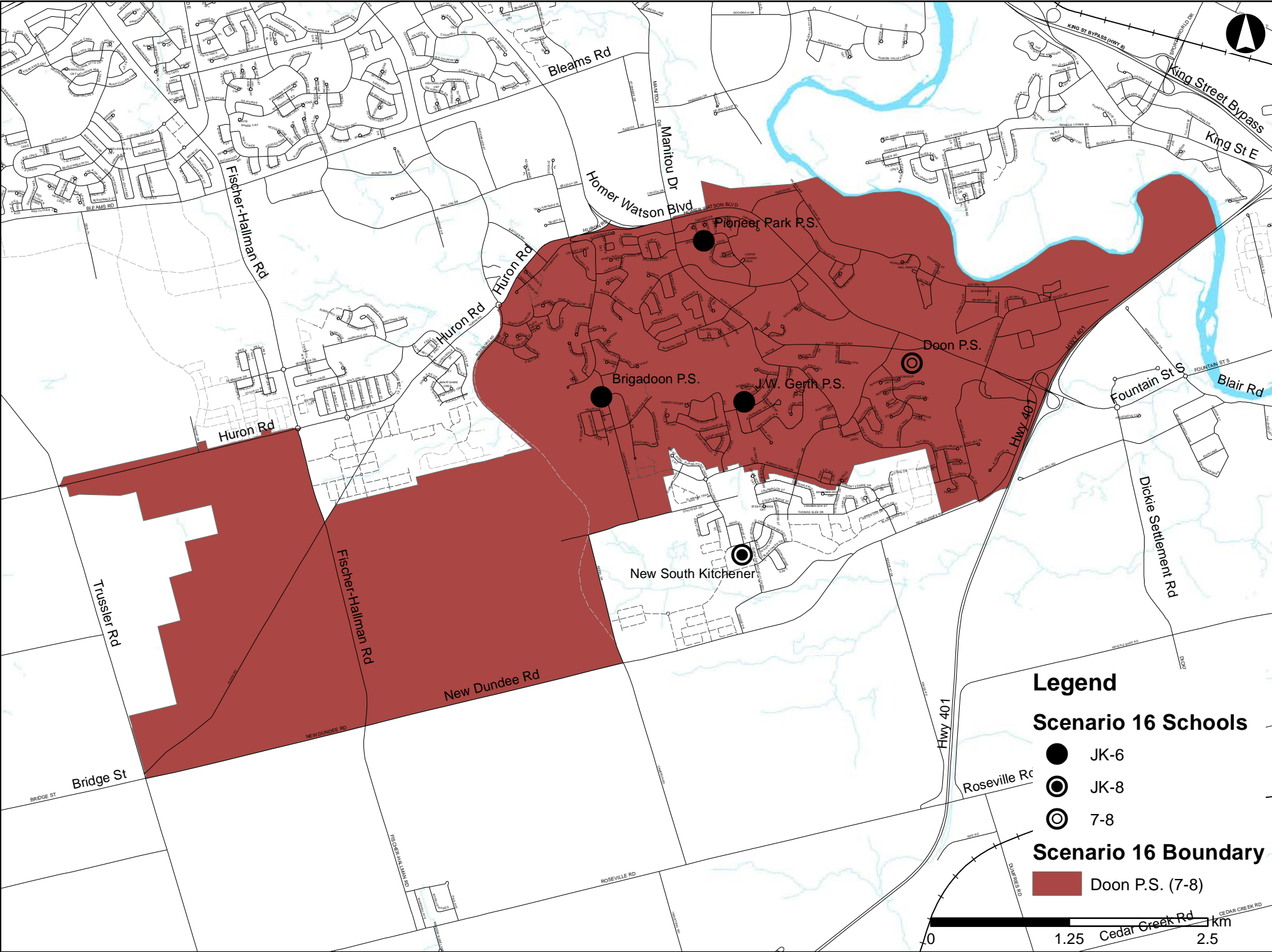
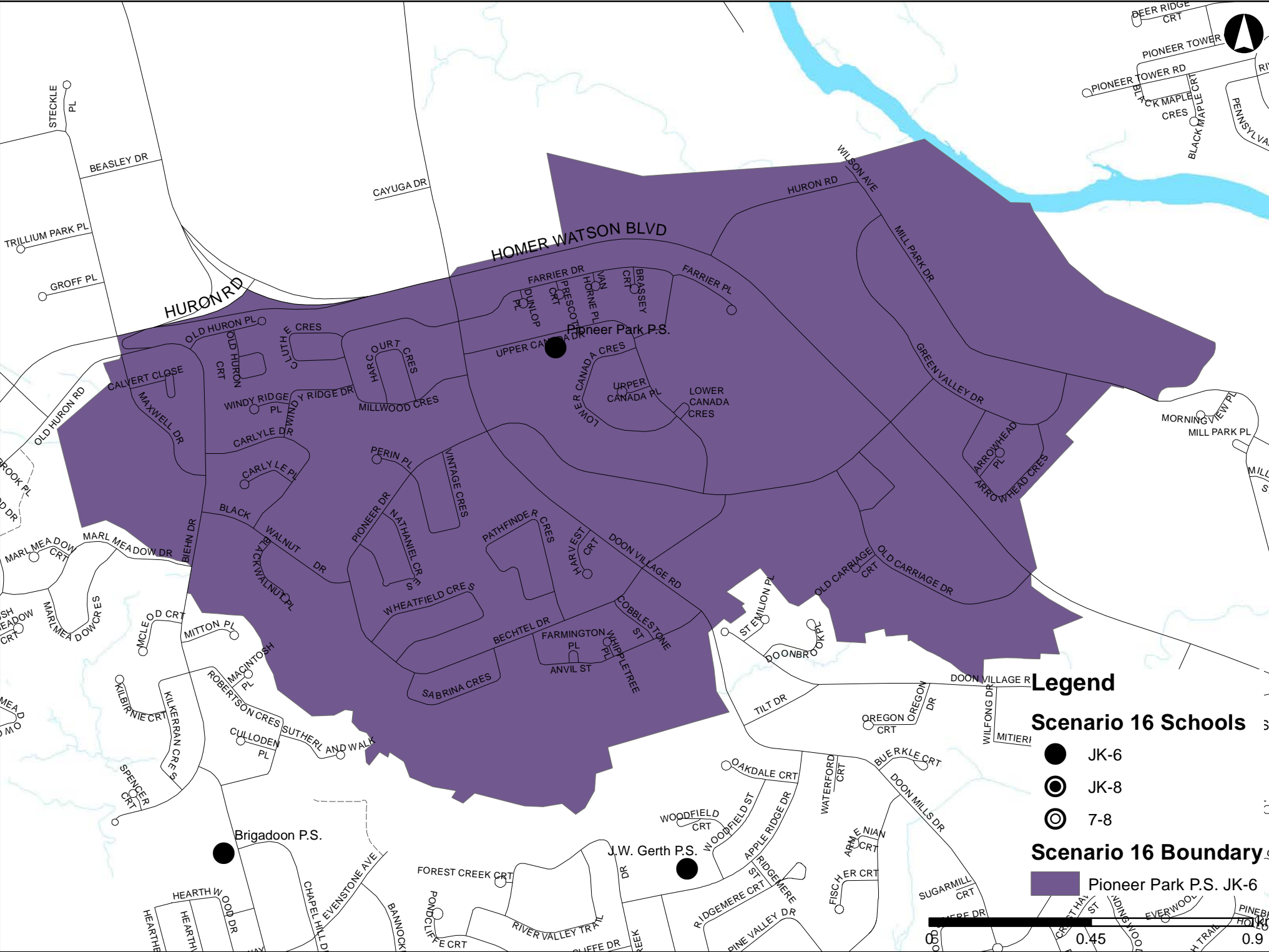


Figure 11: Proposed Doon Public School Boundary (7-8) under Scenario 16



[illegible]

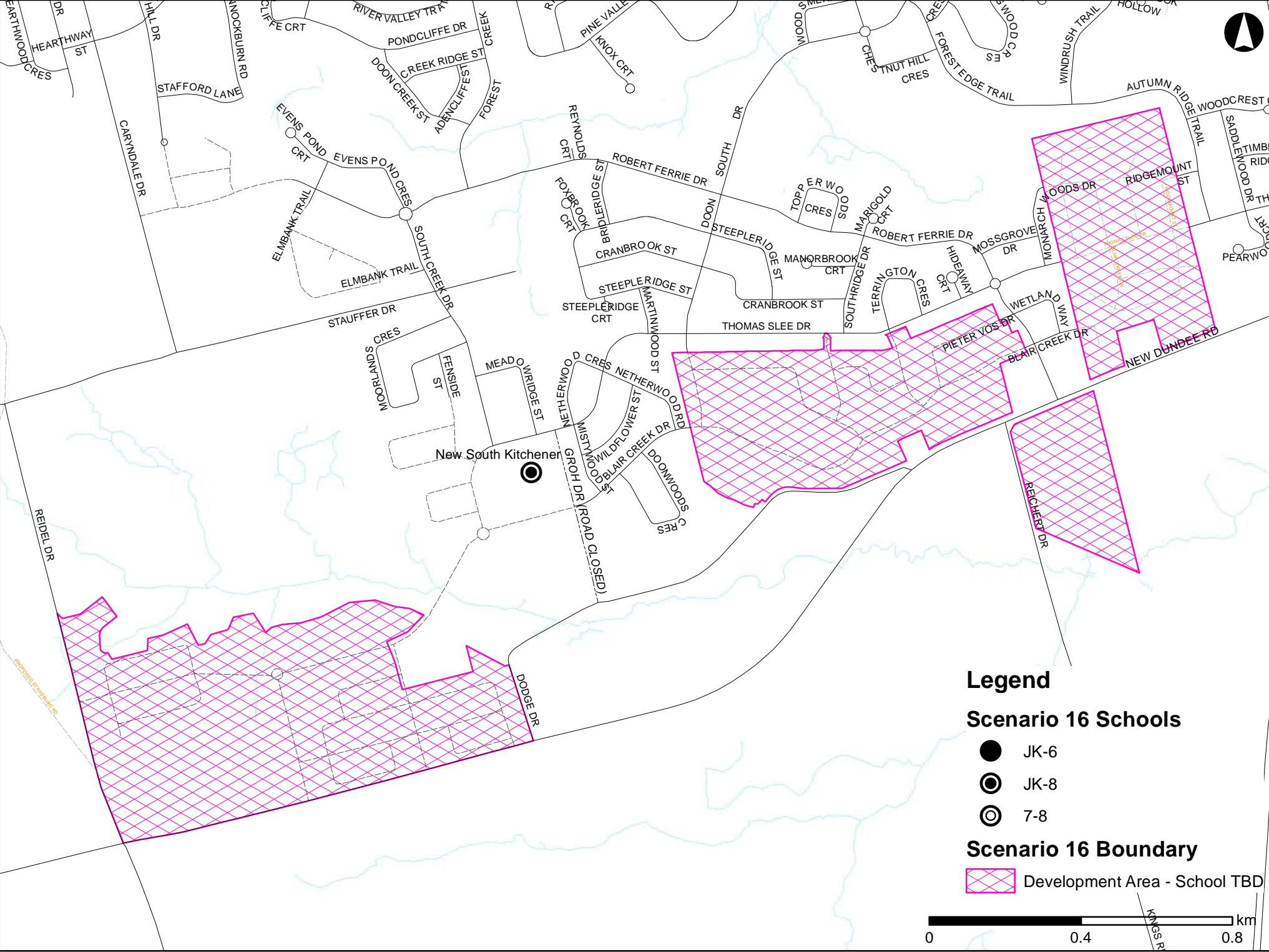
[illegible]

Figure 14: Interim Option F Proposed JK-4 Boundaries

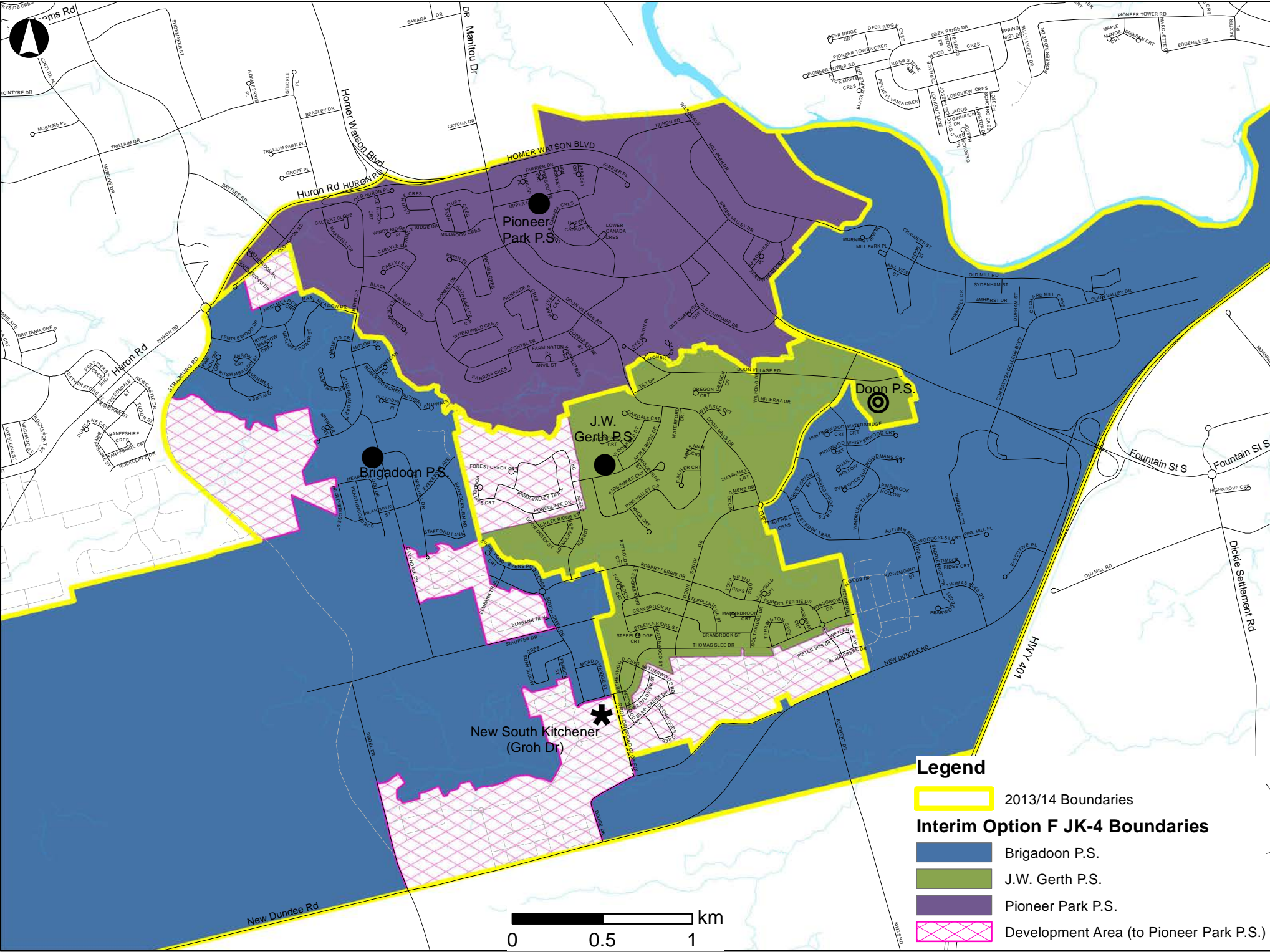


Figure 15: Interim Option F Proposed Grade 5-6 Boundaries

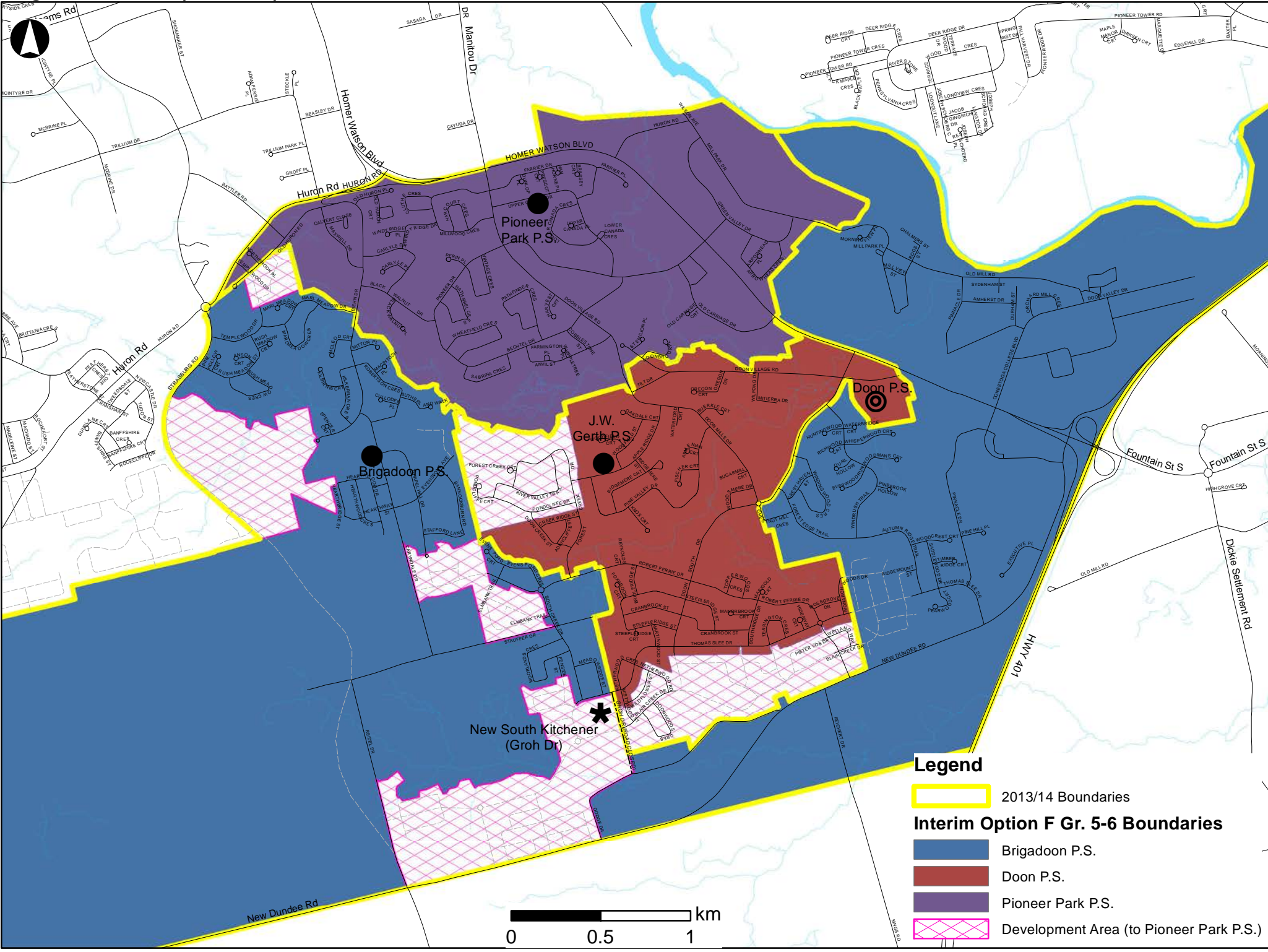


Figure 16: Interim Option J Proposed JK-SK Boundaries

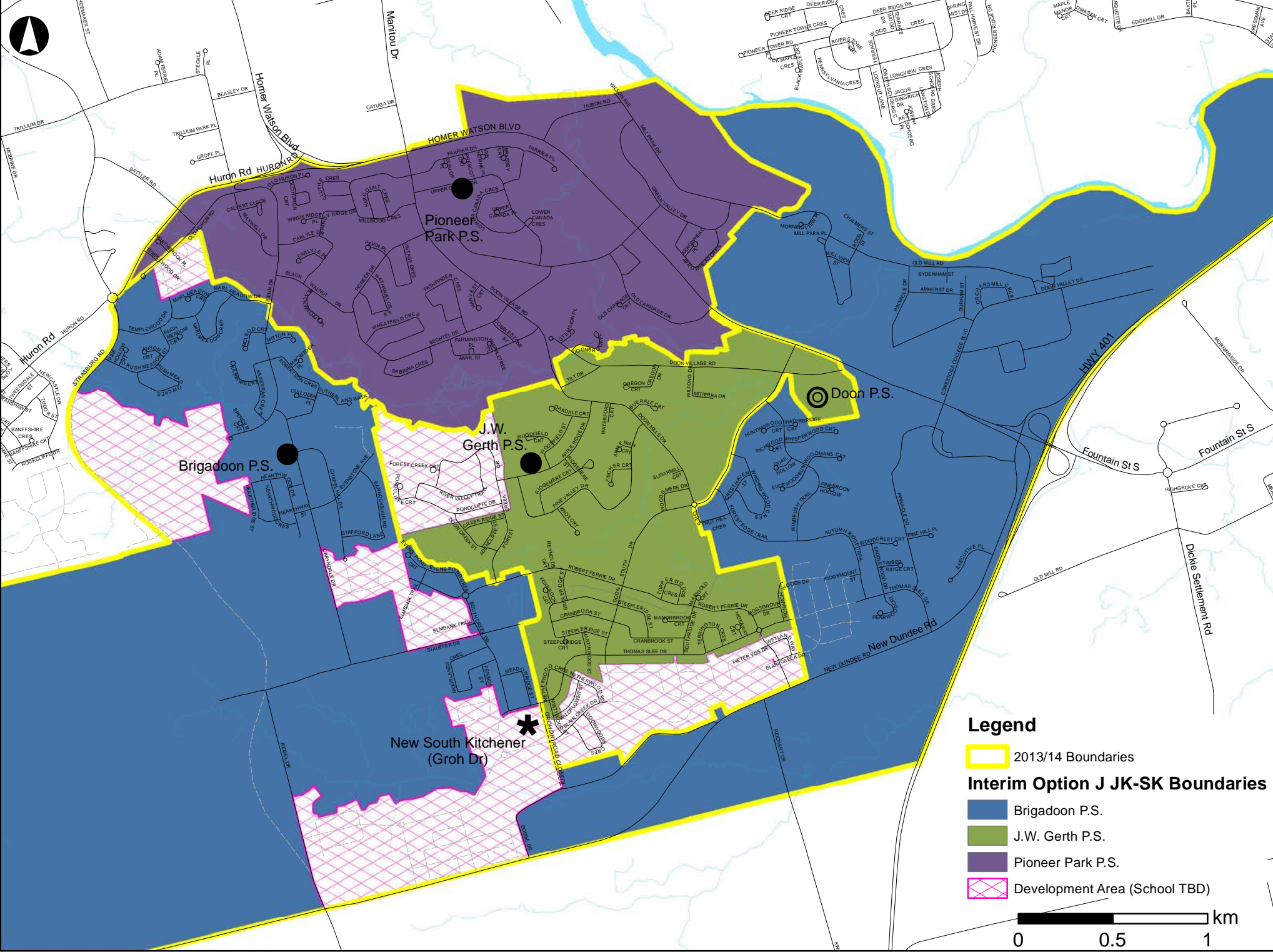


Figure 17: Interim Option J Proposed Grade 1-6 Boundaries

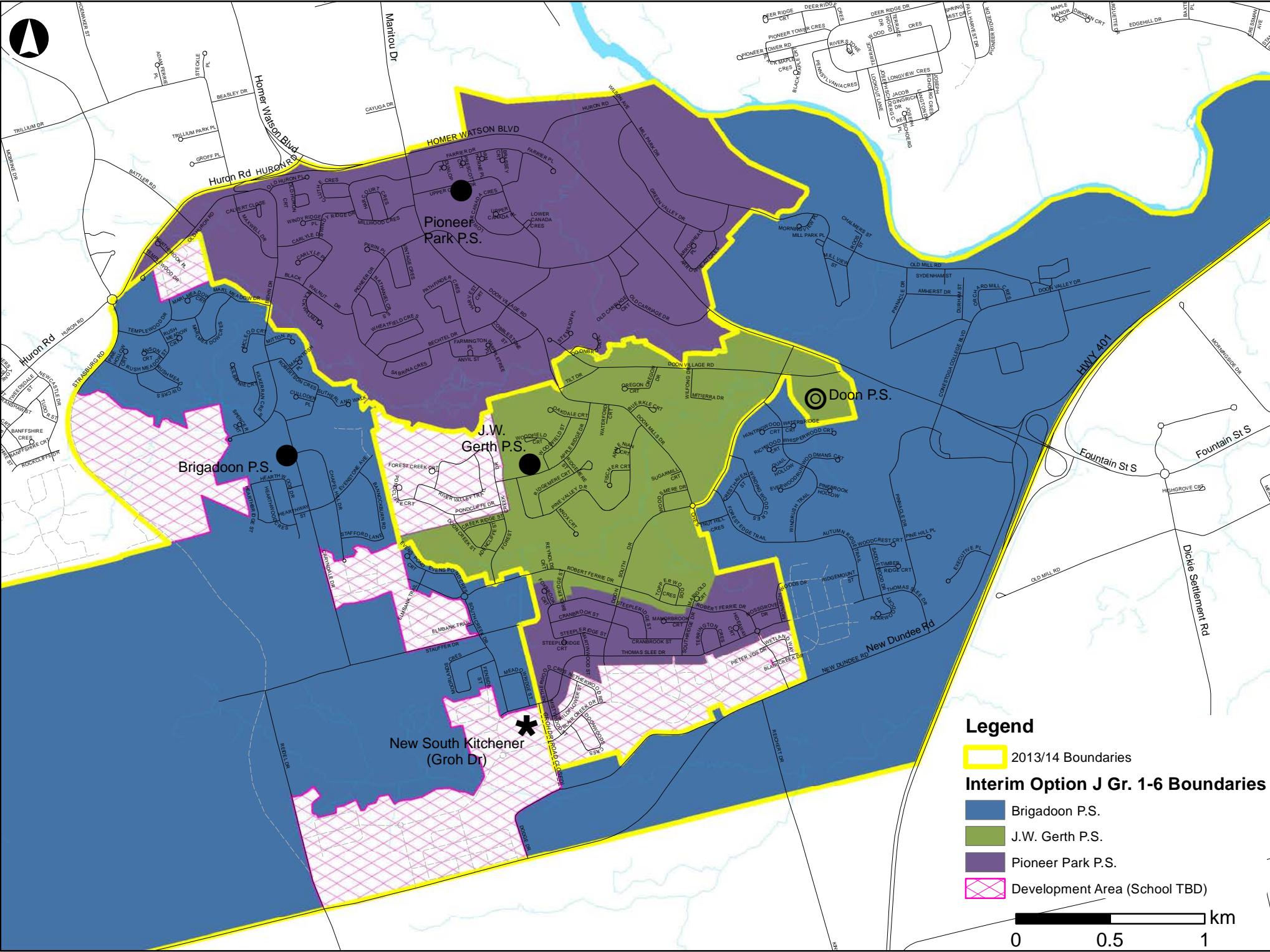


Figure 18: Affected Area to Attend Doon Public School for Grades 5-6 under Option F

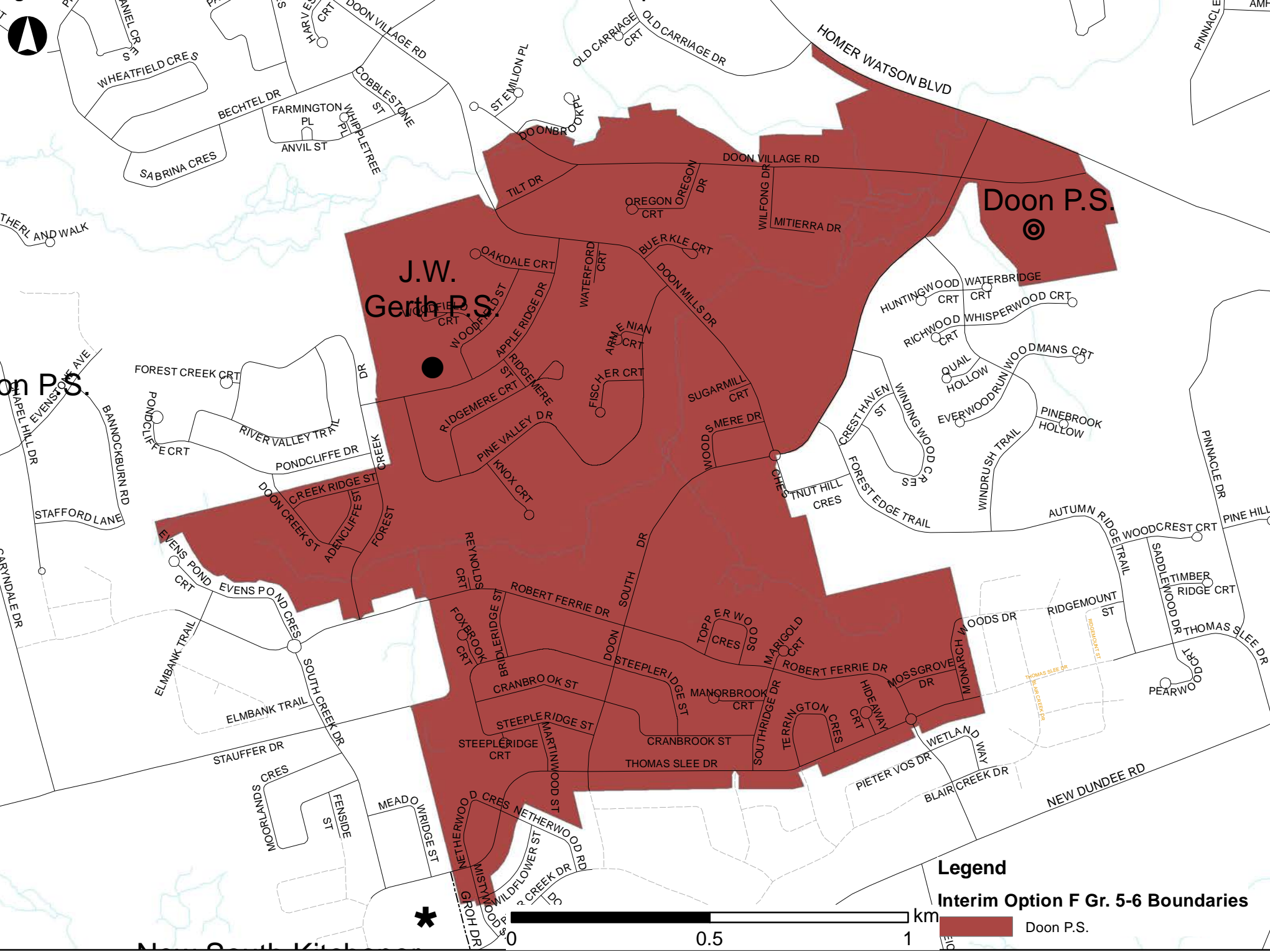


Figure 19: Interim Development Areas to attend Pioneer Park Public School under Option F

