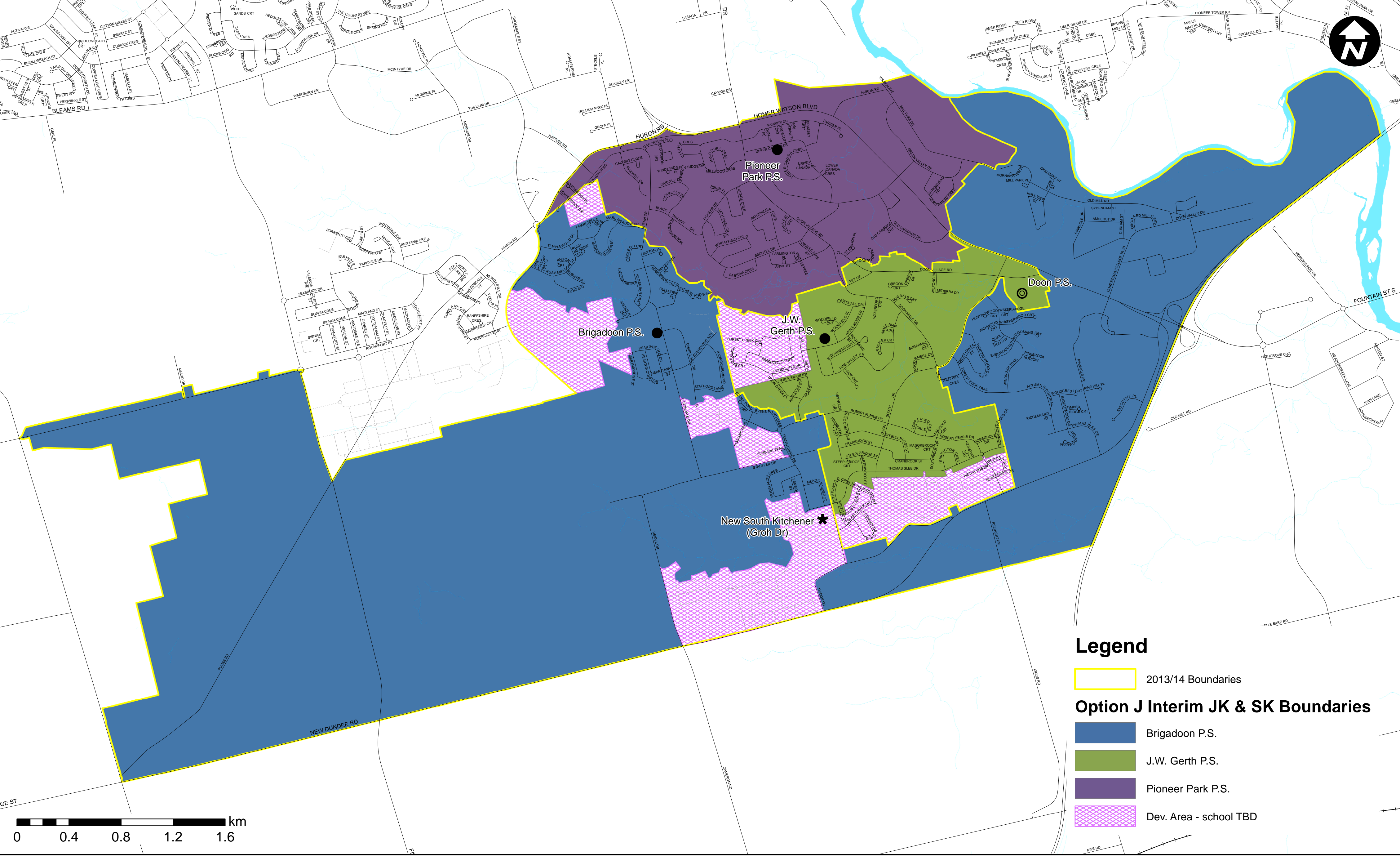


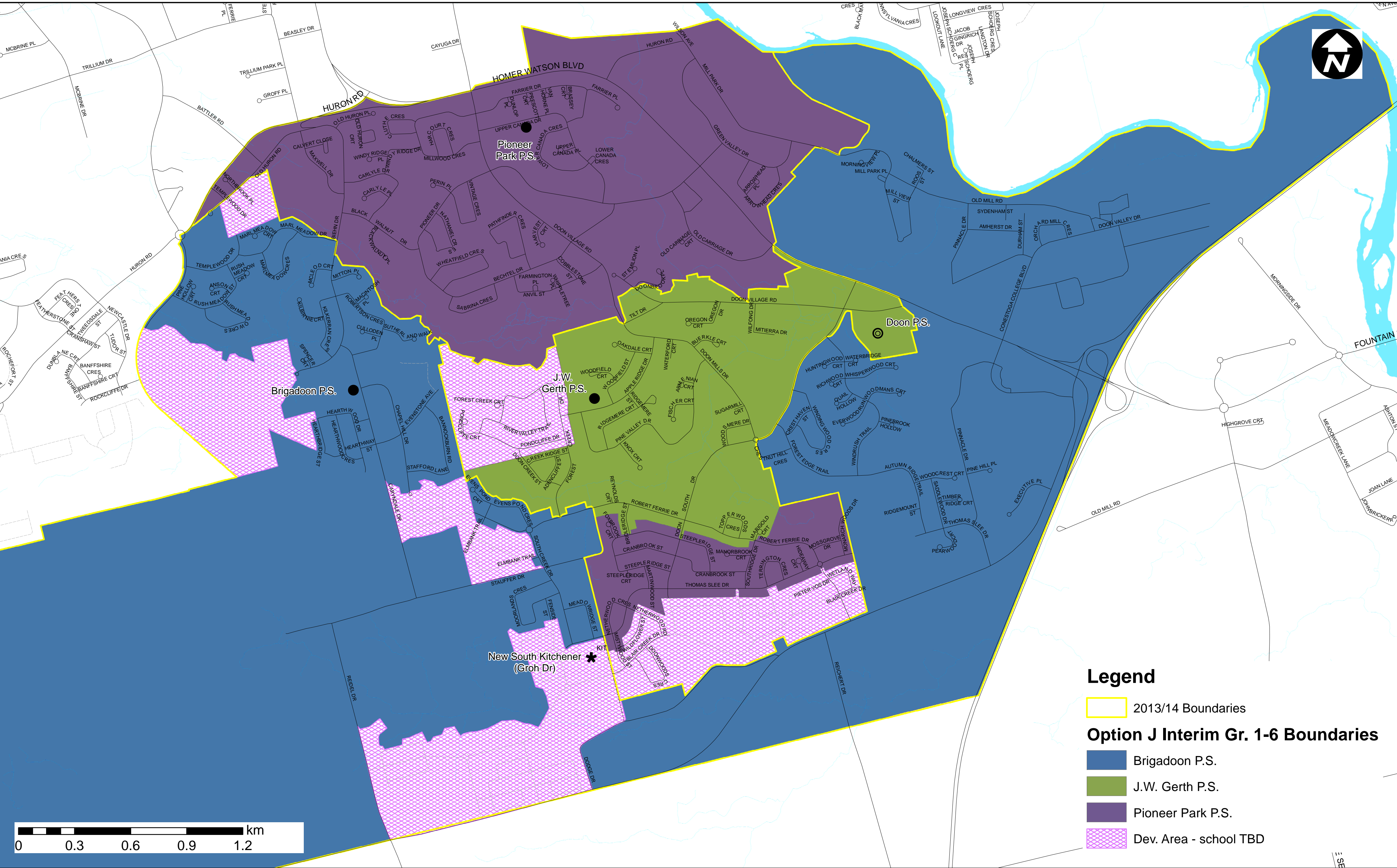
Doon South Elementary Schools Boundary Study

Interim Option J

Interim Option J Proposed JK & SK Boundaries (2014 until New South Kitchener school opens)



Interim Option J Proposed Gr. 1-6 Boundaries (2014 until New South Kitchener school opens)



Doon South Elementary Schools Boundary Study

Interim Option J with Scenario 16

Interim Option J combined with Scenario 16 (based on September 2016 New South Kitchener School Opening)

2014/15 School Year

- All regular track (non-French Immersion) Grade 1-6 students in the new South Kitchener school boundary (portion in J.W. Gerth P.S. 2013/14 boundary only) attend Pioneer Park P.S.
- All French Immersion Grade 2-4 students and siblings in the new South Kitchener school boundary (portion in J.W. Gerth P.S. 2013/14 boundary only) remain at J.W. Gerth P.S.
- Interim Development Areas established and JK-8 students assigned to a school outside of the Doon South study area

2015/16 School Year

- All regular track (non-French Immersion) Grade 1-6 students in the new South Kitchener school boundary (portion in J.W. Gerth P.S. 2013/14 boundary only) attend Pioneer Park P.S.
- All French Immersion Grade 3-5 students and siblings in the new South Kitchener school boundary (portion in J.W. Gerth P.S. 2013/14 boundary only) remain at J.W. Gerth P.S.
- Interim Development Areas established and JK-8 students assigned to a school outside of the Doon South study area

2016/17 School Year

- New South Kitchener school opens JK-7 (Grade 8 students stay at Doon P.S.)
- All boundaries modified to implement changes
- All Grade 6 students in affected areas moving from Pioneer Park P.S. to Brigadoon P.S. or J.W. Gerth P.S. grandfathered at Pioneer Park P.S.
- Development Areas established - new students assigned to a school that has space to accommodate the projected enrolment until a permanent solution can be established.
- Offer French Immersion at New South Kitchener school (starting with Gr. 1-4 French Immersion in 2016/17 and working up to Gr. 6 by 2018/19)
- Grade 5-8 French Immersion out of area students and siblings grandfathered at 2015/16 school (Note: Student Transportation is governed by Board Policy 4009 and Administrative Procedure 4260. If your child is not eligible for transportation under the terms outlined therein, transportation to and from school will be the sole responsibility of the parent/ guardian)

2017/18 School Year

- New South Kitchener school adds Grade 8

Scenario 16

Interim Option J

Based on Sept. 2016 New School opening date

School	2014			2015			2016			2017		
	Grades	Enrolment	Portables	Grades	Enrolment	Portables	Grades	Enrolment	Portables	Grades	Enrolment	Portables
Brigadoon P.S.	JK-6	555	6	JK-6	595	8	JK-6	495	4	JK-6	495	4
Doon P.S.	7-8	380	2	7-8	415	4	7-8	385	2	7-8	380	2
J.W. Gerth P.S.	JK-6	600	3	JK-6	620	4	JK-6	600	3	JK-6	585	3
Pioneer Park P.S.	JK-6	540	10	JK-6	540	10	JK-6	375	3	JK-6	370	3
New School	N/A	0		N/A	0		JK-7	595		JK-8	715	5
Development Areas		70			160			30			70	
Total		2140	22		2325	26		2480	12		2620	16

Pros and Cons of Interim Option J

Pro	Con
<ul style="list-style-type: none">• Gr. 1-6 students who live closest to J.W. Gerth PS stay there	<ul style="list-style-type: none">• Additional transitions for majority of students in new South Kit. school boundary
<ul style="list-style-type: none">• Brigadoon PS, J.W. Gerth PS and Pioneer Park PS all remain JK-6	<ul style="list-style-type: none">• Inequity between regular track and French Immersion students/families (reg. track have to leave and FI can stay)
<ul style="list-style-type: none">• Enrolment at Brigadoon PS, J.W. Gerth PS and Pioneer Park PS all at similar levels (over 500 students); thereby ‘spreading the load’ to all schools	<ul style="list-style-type: none">• 2014 Gr. 1 students in new South Kit. school boundary would not be able to register for FI at a Doon South study area school for FI – potentially affecting future FI classes at the new South Kit. school
<ul style="list-style-type: none">• Reduces enrolment at J.W. Gerth PS enough to last until new school opens (115% occupancy)	<ul style="list-style-type: none">• Increases Pioneer Park PS to 175% occupancy = more pressure on smallest building in study area
<ul style="list-style-type: none">• Enrolment increase at Pioneer Park PS is definite and immediate – may make staffing and resource allocation process easier	<ul style="list-style-type: none">• Bus runs to Pioneer Park PS are long; therefore buses may not be able to be used multiple times = additional cost
	<ul style="list-style-type: none">• Splits families with young children (e.g., SK and Gr. 1 at different schools)
	<ul style="list-style-type: none">• Development Areas are scattered and will be bused out of the Doon South study area; therefore bus runs will not be efficient
	<ul style="list-style-type: none">• School for development areas undetermined and therefore students may be split between multiple ‘holding’ schools