

Doon South

Boundary Study

Working Group Meeting #5

November 28, 2013

J.W. Gerth P.S.

4:00 – 5:30 pm



Waterloo Region
District School Board

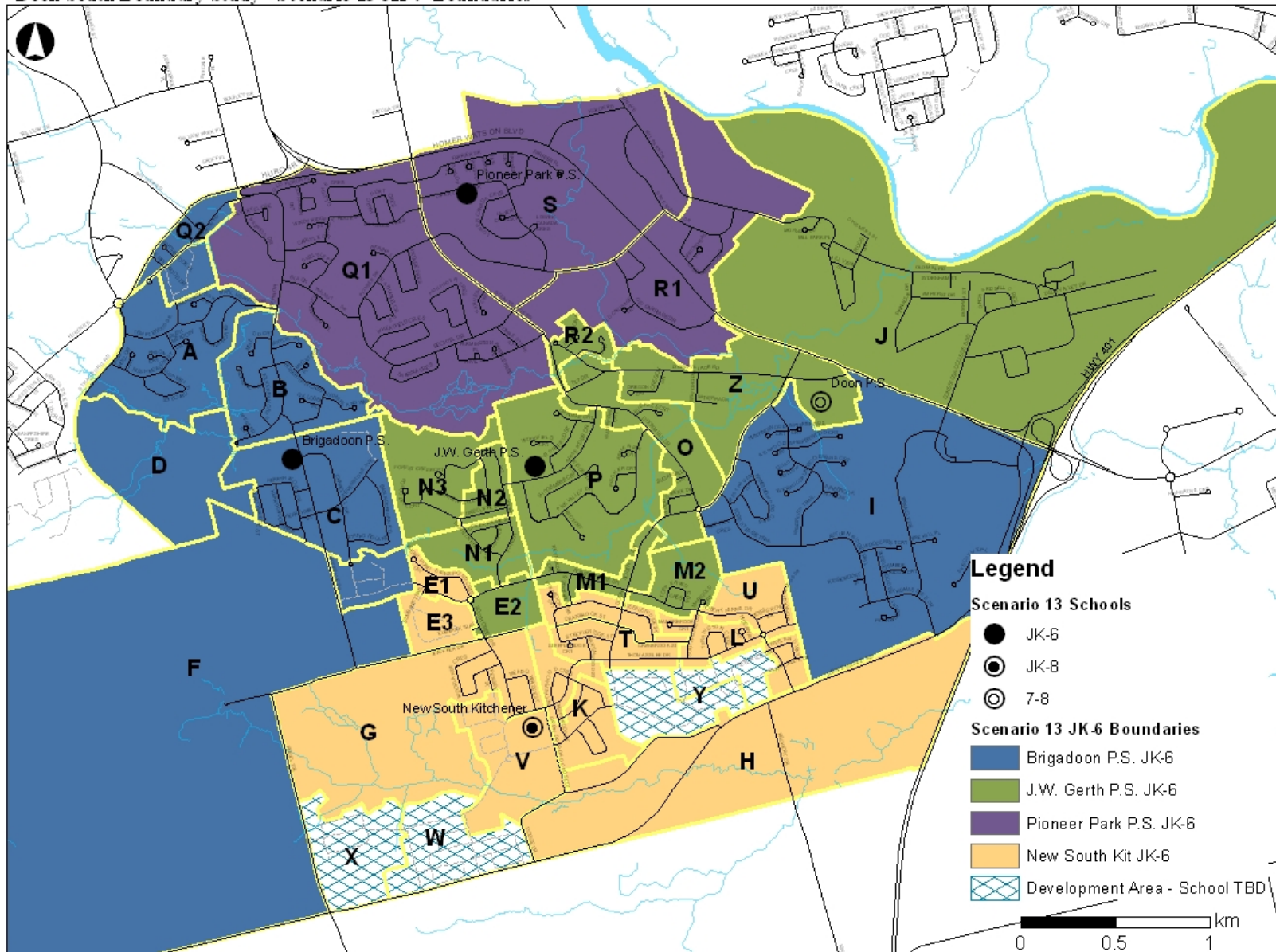
Agenda

1. Welcome
2. Draft Minutes Review/Approval
3. Business Arising from Minutes
 - a) Update on Child Care for New South Kit. school
4. Scenario Discussion
 - a) Scenario 13
 - b) Scenario 14
 - c) Scenario 15
5. Transitions/Interim Solutions Discussion
6. Public Meeting #2
7. Roundtable



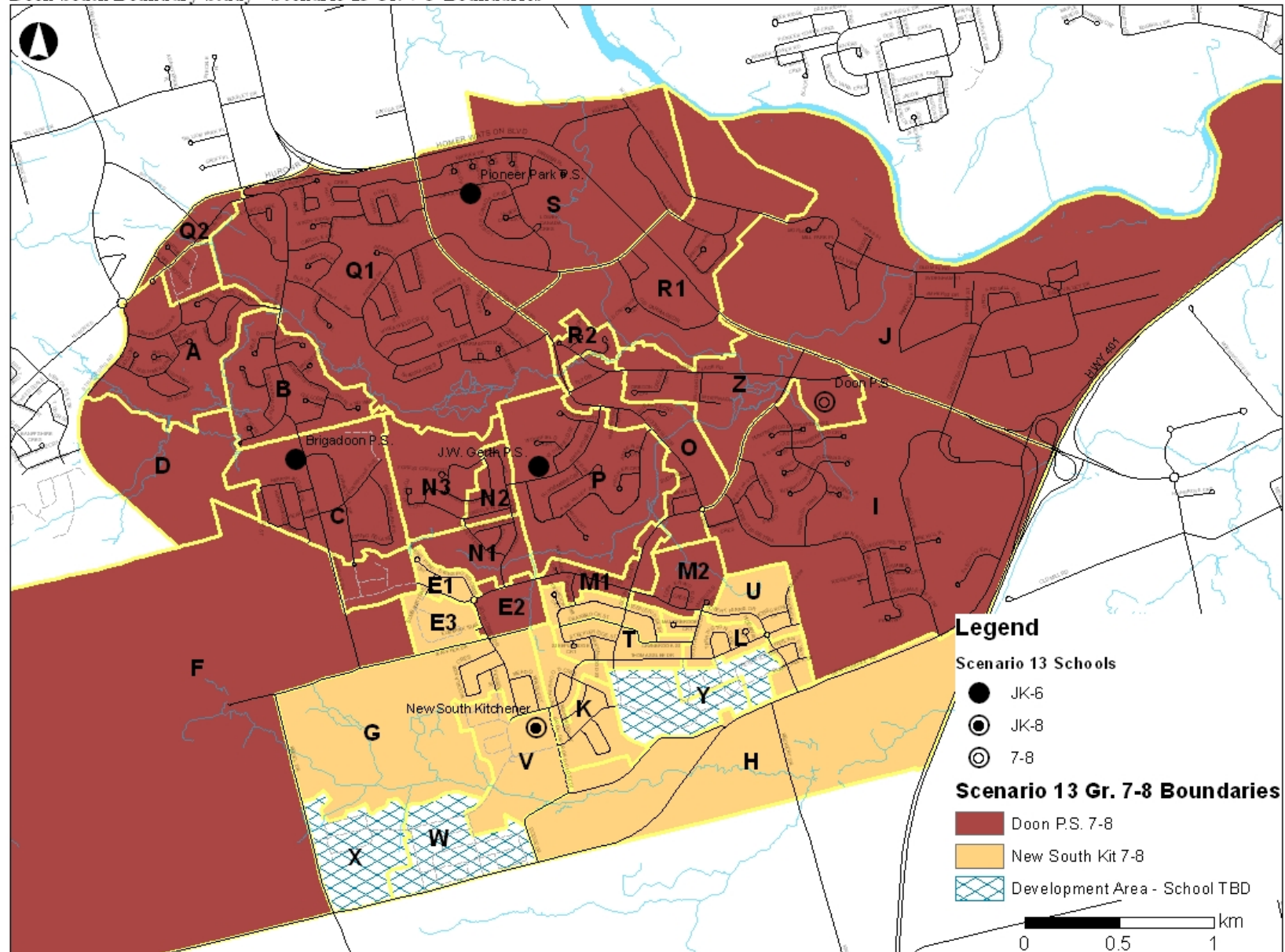
Scenario 13 – JK-6 Boundaries

Doon South Boundary Study - Scenario 13 JK-6 Boundaries



Scenario 13 – 7-8 Boundaries

Doon South Boundary Study - Scenario 13 Gr. 7-8 Boundaries



Scenario 13 – Projections

		Scenario 13																				
School	Scenario 13 Grades	2016-2017							2018-2019							2020-2021						
		JK-6	1-6 FI	7-8	7-8 FI	Total	OTG	Temp. Capacity	JK-6	1-6 FI	7-8	7-8 FI	Total	OTG	Temp. Capacity	JK-6	1-6 FI	7-8	7-8 FI	Total	OTG	Temp. Capacity
Brigadoon P.S.	JK-6	270	195			465	421	2	285	190			475	421	2	315	185			500	421	3
Doon P.S.	7-8	60	20	310	70	460	331	6			290	135	425	331	4			280	160	440	331	5
J.W. Gerth P.S.	JK-6	385	185			570	536	1	420	205			625	536	4	410	195			605	536	3
Pioneer Park P.S.	JK-6	375				375	308	3	375				375	308	3	370				370	308	3
New School	JK-8	455	80	40	0	575	600		520	135	90	0	745	600	6	495	160	105	0	760	600	7
Development Areas		30		0		30			120		15		135			265		25		290		
Total		1575	480	350	70	2475	2196	12	1720	530	395	135	2780	2196	19	1855	540	410	160	2965	2196	21

Scenario 13

School	2013/14 Capacity	2016/17 Capacity	New Capacity (requires approval)	Total Capacity Required	Grades	Year								
						2016	2017	2018	2019	2020	2021	2022	2023	2024
Brigadoon P.S.	383	421	46	467	JK-6	465	460	475	485	500	490	475	465	455
Doon P.S.	331	331	115	446	7-8	465	385	425	435	435	435	455	460	465
J.W. Gerth P.S.	494	536		536	JK-6	570	645	620	605	605	595	590	580	570
Pioneer Park P.S.	290	308	46	354	JK-6	375	370	375	375	370	365	365	360	360
New School	0	600	46	646	JK-8	575	690	745	755	760	750	730	710	690
Development Areas				0		30	70	135	200	295	410	510	570	600
Total	1498	2196		2449		2480	2620	2775	2860	2965	3050	3125	3145	3140

Scenario 13 Description:

- New South Kitchener school (JK-8) boundary takes in portions of the current Brigadoon P.S. and J.W. Gerth P.S. boundaries (JK-6) and Doon P.S. boundary (7-8)
- Doon P.S. remains as senior (7-8) school for Brigadoon P.S., Pioneer Park P.S. and J.W. Gerth P.S. students
- Boundary modifications for Brigadoon P.S. (add Area Q2, remove Areas E, G, H, J, V, W, X), J.W. Gerth P.S. (add Areas E2, J and R2, remove Areas K, L, T, U, Y) and Pioneer Park P.S. (remove Areas Q2 and R2)
- French Immersion program offered at Brigadoon P.S. (1-6), J.W. Gerth P.S. (1-6 by 2016), the New South Kitchener school (1-4 in 2016, 1-6 by 2018) and Doon P.S. (7-8 by 2014)
- Development Areas established – future school to be determined

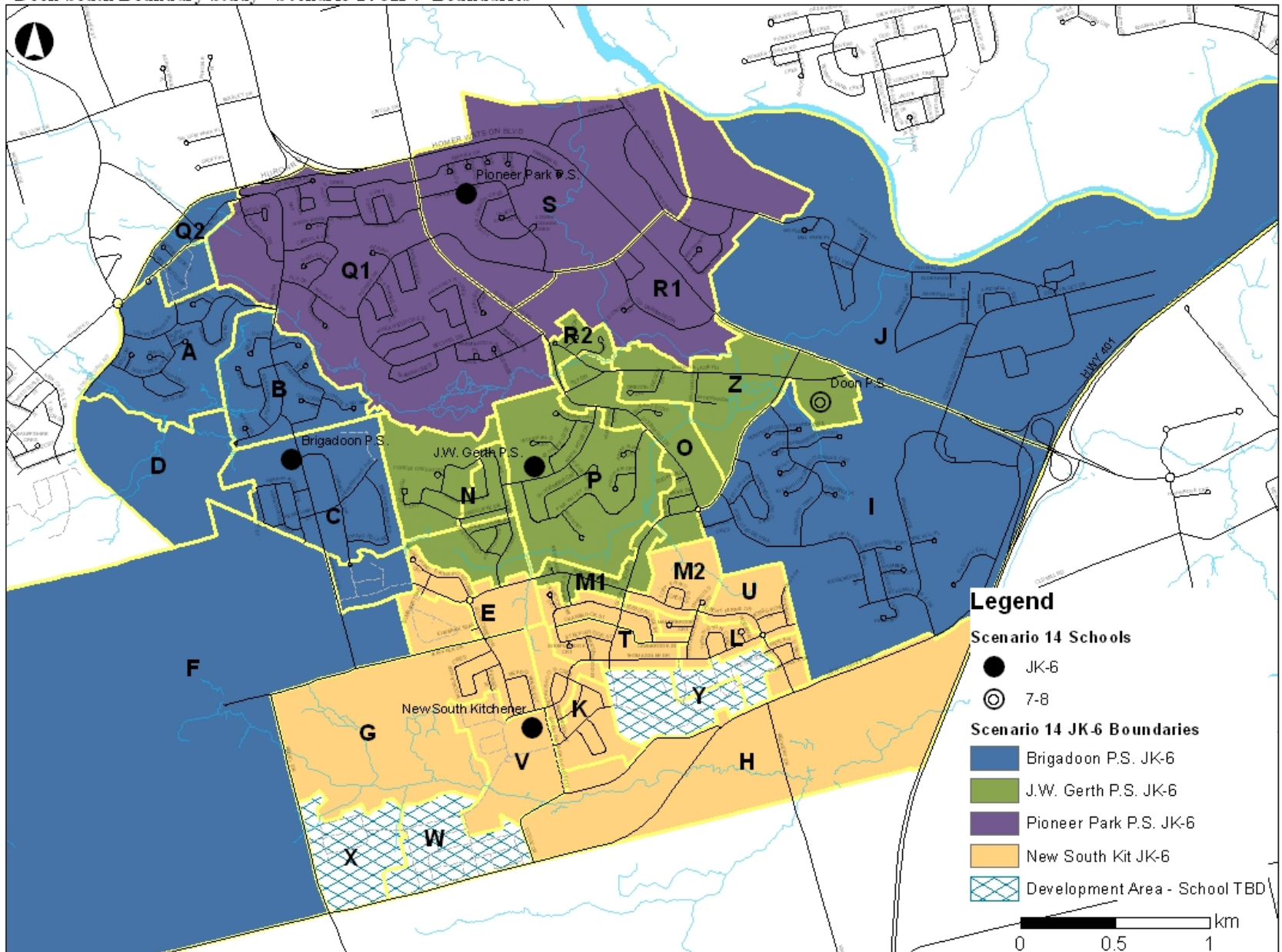
Scenario 13 v. Objectives

Objectives	Met?
• To establish a boundary for the new South Kitchener Groh Drive elementary school	<input checked="" type="checkbox"/>
• To increase the number of students housed in permanent accommodation in a cost-effective way	TBD
• To provide equitable learning opportunities for students and staff by moving towards the following criteria (<i>from Board Policy 3002</i>):	
• <i>JK-6 facilities between 350 and 400 students (approx. 2 classes/grade)</i>	<input checked="" type="checkbox"/>
• <i>JK-8 facilities between 500 and 650 students (approx. 2 classes/grade JK-6, 2+ classes/grade 7-8)</i>	<input checked="" type="checkbox"/>
• <i>Minimizing the potential for schools with enrolments over 650 students</i>	<input checked="" type="checkbox"/>
• To increase the number of students within walking distance to their assigned school (<1.6 km)	<input checked="" type="checkbox"/>
• To establish boundaries around "Development Areas" where proposed plans of subdivision are temporarily assigned to holding schools until a permanent accommodation solution can be determined	<input checked="" type="checkbox"/>
• To develop an interim (temporary) accommodation strategy, beginning in September 2014, to assist schools with increasing enrolment until such time as the new South Kitchener Groh Drive school is open	TBD



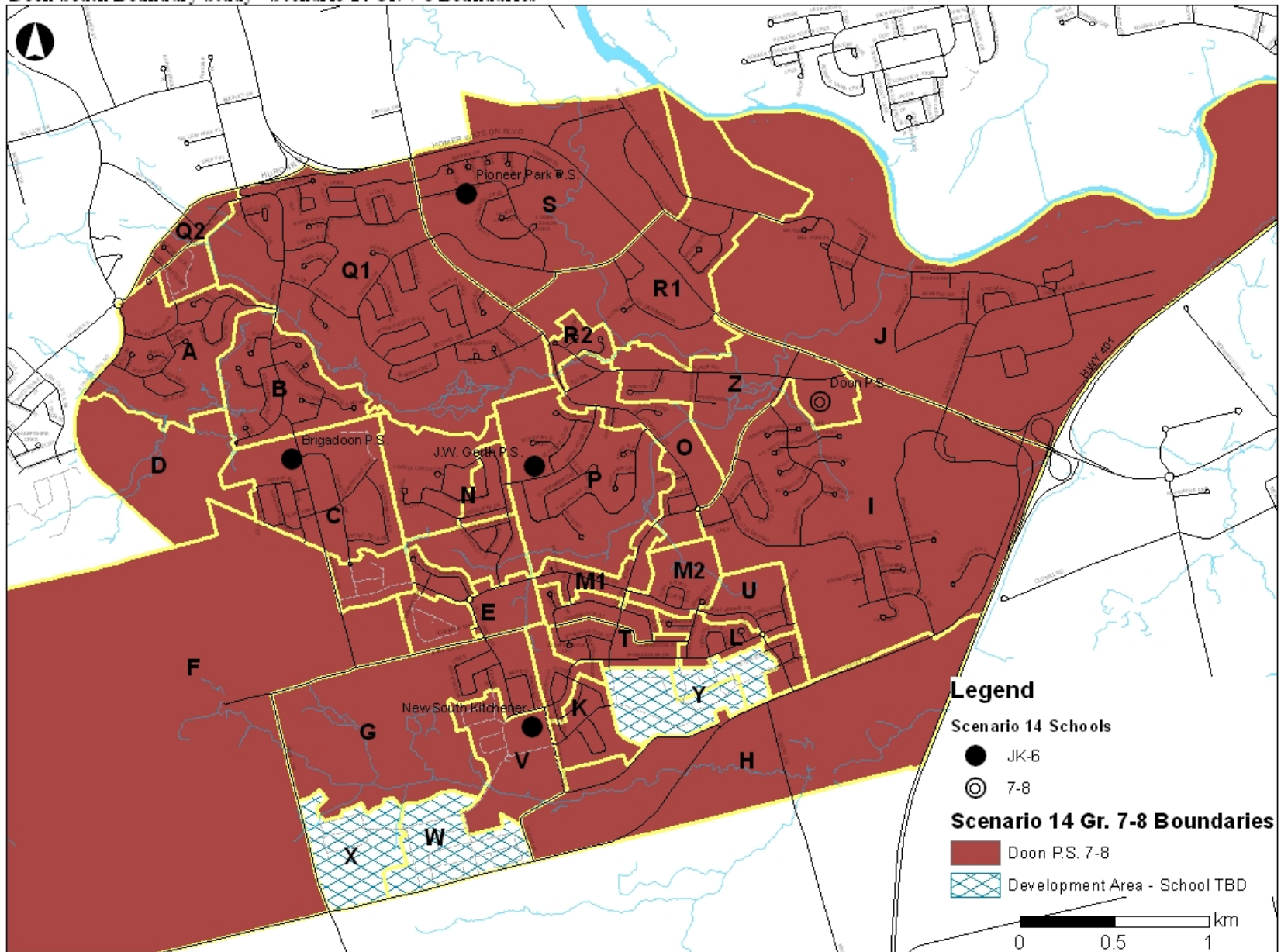
Scenario 14 – JK-6 Boundaries

Doon South Boundary Study - Scenario 14 JK-6 Boundaries



Scenario 14 – 7-8 Boundaries

Doon South Boundary Study - Scenario 14 Gr. 7-8 Boundaries



Scenario 14 – Projections

		Scenario 14																				
School	Scenario 14 Grades	2016-2017							2018-2019							2020-2021						
		JK-6	1-6 FI	7-8	7-8 FI	Total	OTG	Temp. Capacity	JK-6	1-6 FI	7-8	7-8 FI	Total	OTG	Temp. Capacity	JK-6	1-6 FI	7-8	7-8 FI	Total	OTG	Temp. Capacity
Brigadoon P.S.	JK-6	300	210			510	421	4	305	200			505	421	4	340	190			530	421	5
Doon P.S.	7-8	95	20	355	70	540	331	9			380	135	515	331	8			385	160	545	331	9
J.W. Gerth P.S.	JK-6	325	150			475	536		360	150			510	536		350	140			490	536	
Pioneer Park P.S.	JK-6	375				375	308	3	375				375	308	3	370				370	308	3
New School	JK-6	450	105			555	600		565	165			730	600	6	540	190			730	600	6
Development Areas		30		0		30			120		15		135			265		25		290		
Total		1575	485	355	70	2485	2196	16	1725	515	395	135	2770	2196	21	1865	520	410	160	2955	2196	23

Scenario 14

School	2013/14 Capacity	2016/17 Capacity	New Capacity (requires approval)	Total Capacity Required	Grades	Year								
						2016	2017	2018	2019	2020	2021	2022	2023	2024
Brigadoon P.S.	383	421	46	467	JK-6	505	495	505	520	530	525	510	495	485
Doon P.S.	331	331	230	561	7-8	540	470	515	535	540	545	560	560	555
J.W. Gerth P.S.	494	536		536	JK-6	475	530	510	500	495	485	485	480	475
Pioneer Park P.S.	290	308	46	354	JK-6	375	370	375	375	370	365	365	360	360
New School	0	600	46	646	JK-6	555	680	735	735	730	715	695	680	665
Development Areas				0		30	70	135	200	295	410	510	570	600
Total	1498	2196		2564		2480	2620	2775	2860	2965	3050	3125	3145	3140

Scenario 14 Description:

- New South Kitchener school (JK-6) boundary takes in portions of the current Brigadoon P.S. and J.W. Gerth P.S. boundaries
- Doon P.S. remains as senior (7-8) school for all Doon South Area students
- Minor boundary modifications for Brigadoon P.S., J.W. Gerth P.S., and Pioneer Park P.S.
- French Immersion program offered at Brigadoon P.S. (1-6), J.W. Gerth P.S. (1-6 by 2016), the New South Kitchener school (1-4 in 2016 and 1-6 by 2018) and Doon P.S. (7-8 by 2014)
- Development Area boundaries established – future school to be determined

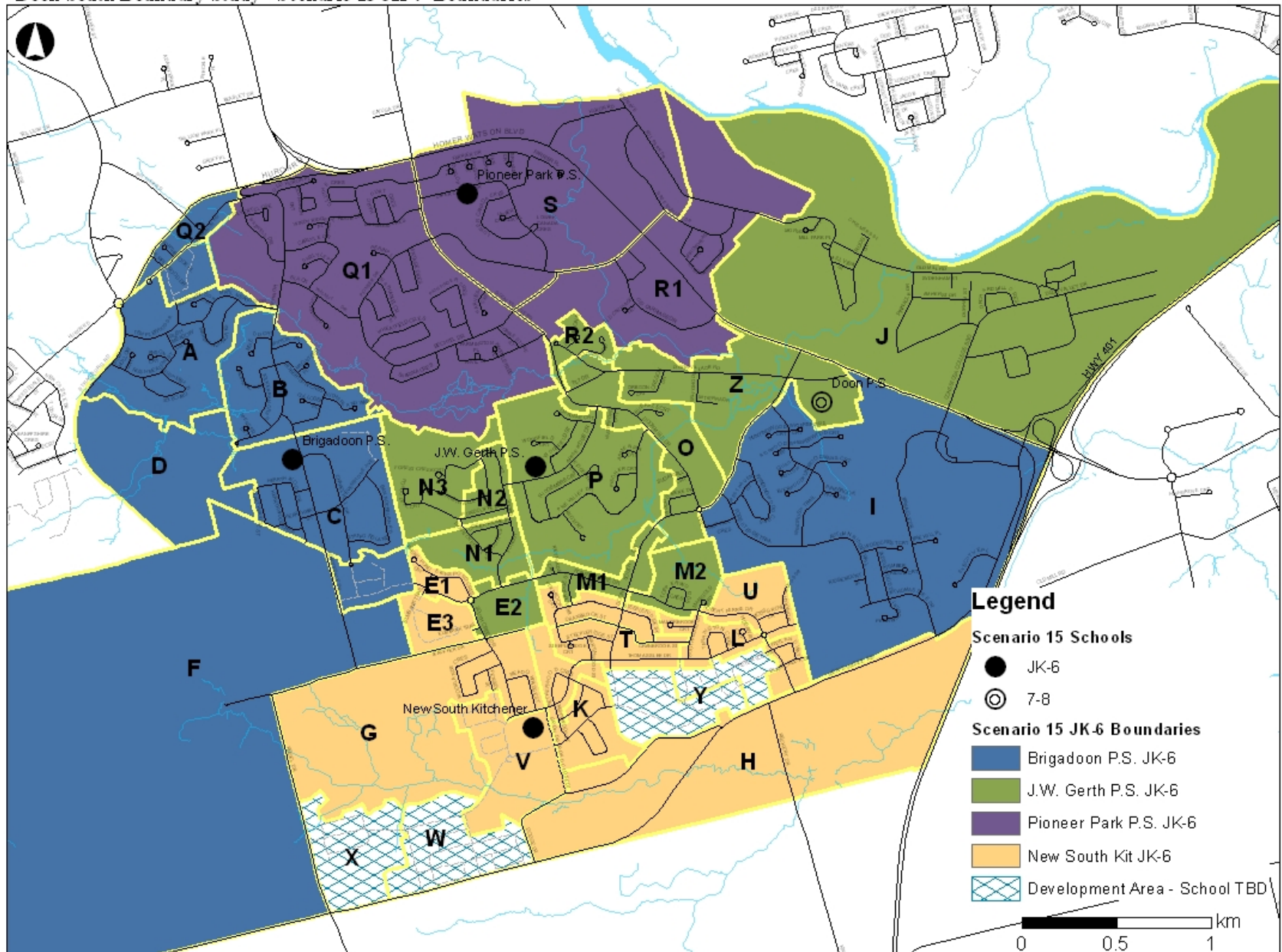
Scenario 14 v. Objectives

Objectives	Met?
• To establish a boundary for the new South Kitchener Groh Drive elementary school	<input checked="" type="checkbox"/>
• To increase the number of students housed in permanent accommodation in a cost-effective way	TBD
• To provide equitable learning opportunities for students and staff by moving towards the following criteria (<i>from Board Policy 3002</i>):	
• <i>JK-6 facilities between 350 and 400 students (approx. 2 classes/grade)</i>	<input checked="" type="checkbox"/>
• <i>JK-8 facilities between 500 and 650 students (approx. 2 classes/grade JK-6, 2+ classes/grade 7-8)</i>	N/A
• <i>Minimizing the potential for schools with enrolments over 650 students</i>	<input checked="" type="checkbox"/>
• To increase the number of students within walking distance to their assigned school (<1.6 km)	<input checked="" type="checkbox"/>
• To establish boundaries around "Development Areas" where proposed plans of subdivision are temporarily assigned to holding schools until a permanent accommodation solution can be determined	<input checked="" type="checkbox"/>
• To develop an interim (temporary) accommodation strategy, beginning in September 2014, to assist schools with increasing enrolment until such time as the new South Kitchener Groh Drive school is open	TBD



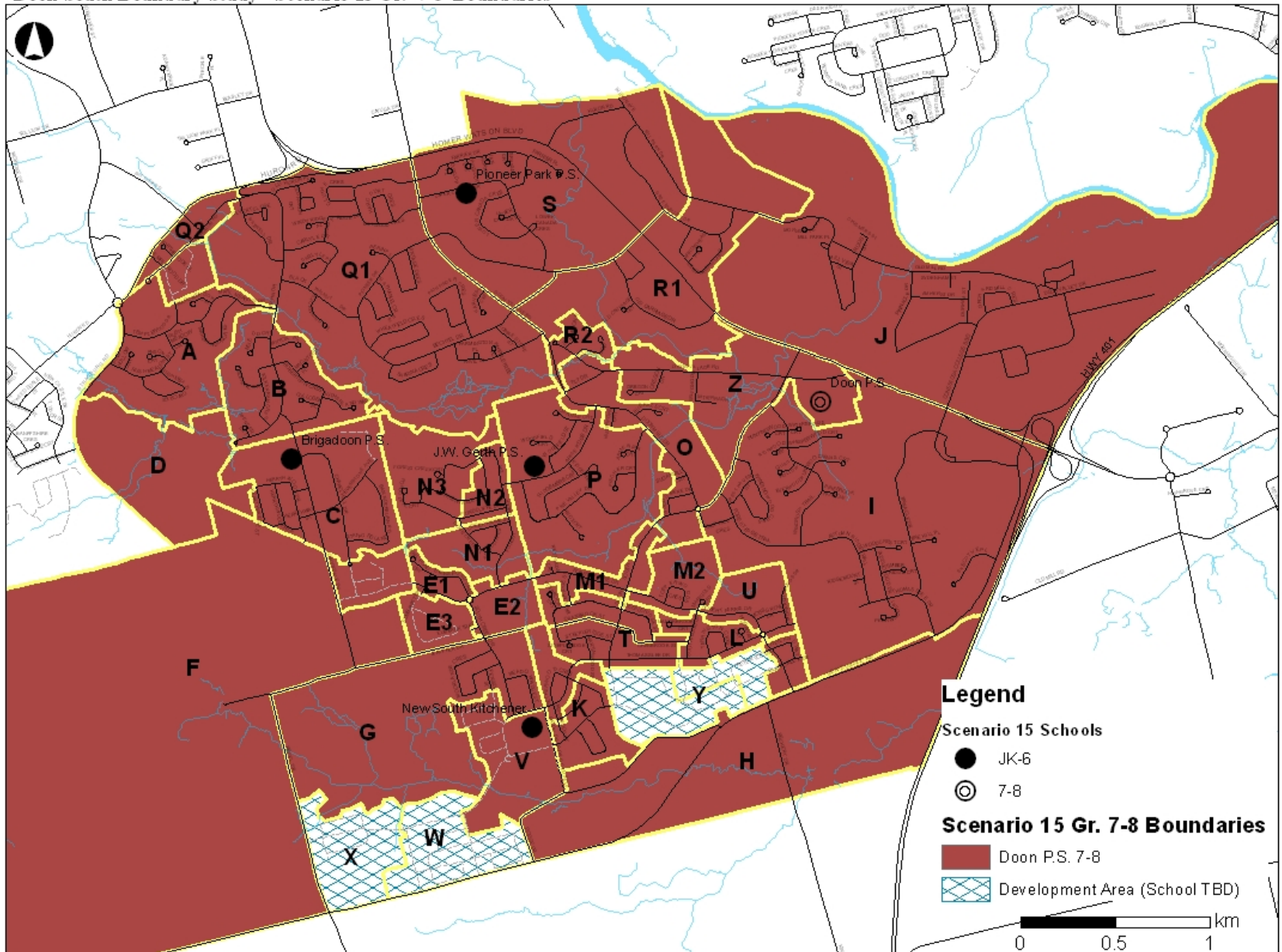
Scenario 15 – JK-6 Boundaries

Doon South Boundary Study - Scenario 15 JK-6 Boundaries



Scenario 15 – 7-8 Boundaries

Doon South Boundary Study - Scenario 15 Gr. 7-8 Boundaries



Scenario 15 – Projections

School	Scenario 15 Grades	Scenario 15																				
		2016-2017							2018-2019							2020-2021						
		JK-6	1-6 FI	7-8	7-8 FI	Total	OTG	Temp. Capacity	JK-6	1-6 FI	7-8	7-8 FI	Total	OTG	Temp. Capacity	JK-6	1-6 FI	7-8	7-8 FI	Total	OTG	Temp. Capacity
Brigadoon P.S.	JK-6	280	195			475	421	2	285	190			475	421	2	315	185			500	421	3
Doon P.S.	7-8	95	20	355	70	540	331	9			380	135	515	331	8			385	160	545	331	9
J.W. Gerth P.S.	JK-6	385	185			570	536	1	420	205			625	536	4	410	195			605	536	3
Pioneer Park P.S.	JK-6	375				375	308	3	375				375	308	3	370				370	308	3
New School	JK-6	410	80			490	600		520	135			655	600	2	495	160			655	600	2
Development Areas		30		0		30			120		15		135			265		25		290		
Total		1575	480	355	70	2480	2196	15	1720	530	395	135	2780	2196	19	1855	540	410	160	2965	2196	20

School	2013/14 Capacity	2016/17 Capacity	New Capacity (requires approval)	Total Capacity Required	Grades	Year								
						2016	2017	2018	2019	2020	2021	2022	2023	2024
Brigadoon P.S.	383	421	46	467	JK-6	475	460	475	485	500	490	475	465	455
Doon P.S.	331	331	230	561	7-8	540	470	515	535	540	545	560	560	555
J.W. Gerth P.S.	494	536		536	JK-6	570	645	620	605	605	595	590	580	570
Pioneer Park P.S.	290	308	46	354	JK-6	375	370	375	375	370	365	365	360	360
New School	0	600		600	JK-6	490	605	655	660	655	640	625	610	600
Development Areas				0		30	70	135	200	295	410	510	570	600
Total	1498	2196		2518		2480	2620	2775	2860	2965	3050	3125	3145	3140

Scenario 15 Description:

- New South Kitchener school (JK-6) boundary takes in portions of the current Brigadoon P.S. and J.W. Gerth P.S. boundaries
- Doon P.S. remains as senior (7-8) school for all Doon South Area students
- Boundary modifications for Brigadoon P.S., J.W. Gerth P.S., and Pioneer Park P.S.
- French Immersion program offered at Brigadoon P.S. (1-6), J.W. Gerth P.S. (1-6 by 2016), the New South Kitchener school (1-4 in 2016 and 1-6 by 2018) and Doon P.S. (7-8 by 2014)
- Development Area boundaries established – future school to be determined

Scenario 15 v. Objectives

Objectives	Met?
• To establish a boundary for the new South Kitchener Groh Drive elementary school	<input checked="" type="checkbox"/>
• To increase the number of students housed in permanent accommodation in a cost-effective way	TBD
• To provide equitable learning opportunities for students and staff by moving towards the following criteria (<i>from Board Policy 3002</i>):	
• <i>JK-6 facilities between 350 and 400 students (approx. 2 classes/grade)</i>	<input checked="" type="checkbox"/>
• <i>JK-8 facilities between 500 and 650 students (approx. 2 classes/grade JK-6, 2+ classes/grade 7-8)</i>	N/A
• <i>Minimizing the potential for schools with enrolments over 650 students</i>	<input checked="" type="checkbox"/>
• To increase the number of students within walking distance to their assigned school (<1.6 km)	<input checked="" type="checkbox"/>
• To establish boundaries around "Development Areas" where proposed plans of subdivision are temporarily assigned to holding schools until a permanent accommodation solution can be determined	<input checked="" type="checkbox"/>
• To develop an interim (temporary) accommodation strategy, beginning in September 2014, to assist schools with increasing enrolment until such time as the new South Kitchener Groh Drive school is open	TBD



Common grandfathering to all scenarios (13, 14 & 15):

- Grades 5-8 FI students the year of implementation (boundary changes) and their siblings (option to stay at current school)
- Special Education students in congregated classes

Other grandfathering considerations (included in projections):

- Grade 6 students the year of implementation (if the student will have to change schools again for Grade 7)
- Grade 8 students the year of implementation

Other grandfathering considerations (not included in projections):

- Early registration at receiving school for kindergarten students (not an option for the new school)
- Transportation for grandfathered students



Option A Description:

2014-2015

- All Grade 4-6 students in the New South Kitchener school boundary attend Doon P.S. *(120 students*)*
 - Exception: French Immersion students

2015-2016

- All Grade 4-6 students in the New South Kitchener school boundary attend Doon P.S. *(140 students*)*
 - Exception: French Immersion students

2016-2017

- Depends on Scenario

2017-2018

- Depends on Scenario

** Based on Scenario 11*

Interim Option A

School	2014			2015		
	Grades	Enrolment	Portables	Grades	Enrolment	Portables
Brigadoon P.S.	JK-6	545	5	JK-6	590	7
Doon P.S.	4-8	500	7	5-8	550	10
J.W. Gerth P.S.	JK-6	725	9	JK-6	810	12
Pioneer Park P.S.	JK-6	370	3	JK-6	370	3
New School		0			0	
Development Areas		0			0	
Total		2140	24		2320	31



Option B Description:

2014-2015

- All Grade 5-6 J.W. Gerth students attend Doon P.S. (145 students*)
 - Exception: Special Education students in congregated classes

2015-2016

- All Grade 5-6 J.W. Gerth students attend Doon P.S. (195 students*)
 - Exception: Special Education students in congregated classes

2016-2017

- Depends on Scenario

2017-2018

- Depends on Scenario

* Based on Scenario 11

Interim Option B

School	2014			2015		
	Grades	Enrolment	Portables	Grades	Enrolment	Portables
Brigadoon P.S.	JK-6	570	6	JK-6	625	9
Doon P.S.	5-8	525	8	5-8	610	12
J.W. Gerth P.S.	JK-4	685	6	JK-4	715	8
Pioneer Park P.S.	JK-6	370	3	JK-6	370	3
New School		0			0	
Development Areas		0			5	
Total		2150	24		2325	31



Option C Description:

2014-2015

- All Grade 5-6 J.W. Gerth P.S. students attend Doon P.S. *(145 students)*
 - Exception: Special Education students in congregated classes
- All Grade 5-6 Brigadoon P.S. students in New South Kitchener boundary attend Doon P.S. *(15 students*)*
 - Exception: French Immersion students

2015-2016

- All Grade 5-6 J.W. Gerth students attend Doon P.S. *(195 students)*
 - Exception: Special Education students in congregated classes
- All Grade 5-6 Brigadoon P.S. students in New South Kitchener boundary attend Doon P.S. *(25 students*)*
 - Exception: French Immersion students

2016-2017

- Depends on Scenario

2017-2018

- Depends on Scenario

** Based on Scenario 11*

Interim Option C

School	2014			2015		
	Grades	Enrolment	Portables	Grades	Enrolment	Portables
Brigadoon P.S.	JK-6	555	6	JK-6	600	8
Doon P.S.	5-8	535	9	5-8	635	13
J.W. Gerth P.S.	JK-4	685	6	JK-4	715	8
Pioneer Park P.S.	JK-6	370	3	JK-6	370	3
New School		0			0	
Development Areas		0			5	
Total		2145	24		2325	31

* Based on Scenario 11

Option D Description:

2014-2015

- All Grade 1-6 students in New South Kitchener school boundary attend Doon P.S. (250 students*)
 - Exception: Special Education students in congregated classes
 - Exception: Grades 2-6 French Immersion students

2015-2016

- All Grade 1-6 students in New South Kitchener school boundary attend Doon P.S. (320 students*)
 - Exception: Special Education students in congregated classes
 - Exception: Grades 3-6 French Immersion students

2016-2017

- Depends on Scenario

2017-2018

- Depends on Scenario

* Based on Scenario 11

Interim Option D

School	2014			2015		
	Grades	Enrolment	Portables	Grades	Enrolment	Portables
Brigadoon P.S.	JK-6	520	4	JK-6	540	5
Doon P.S.	1-8	630	13	1-8	735	18
J.W. Gerth P.S.	JK-6	620	4	JK-6	680	6
Pioneer Park P.S.	JK-6	370	3	JK-6	370	3
New School		0			0	
Development Areas		0			5	
Total		2140	24		2330	32

** Based on Scenario 11*

Option E Description:

2014-2015

- All Grade 4-6 students in the 2013 J.W. Gerth P.S. boundary attend Doon P.S. (260 students)
 - Exception: Special Education students in congregated classes
- All Gr. 6 students in 2013 Brigadoon P.S. boundary attend Doon P.S. (70 students)

2015-2016

- All Grade 5-6 students in the 2013 J.W. Gerth P.S. boundary attend Doon P.S. (205 students)
 - Exception: Special Education students in congregated classes
- All Grade 6 students in 2013 Brigadoon P.S. boundary attend Doon P.S. (70 students)

2016-2017

- Depends on Scenario

2017-2018

- Depends on Scenario

* Based on Scenario 11

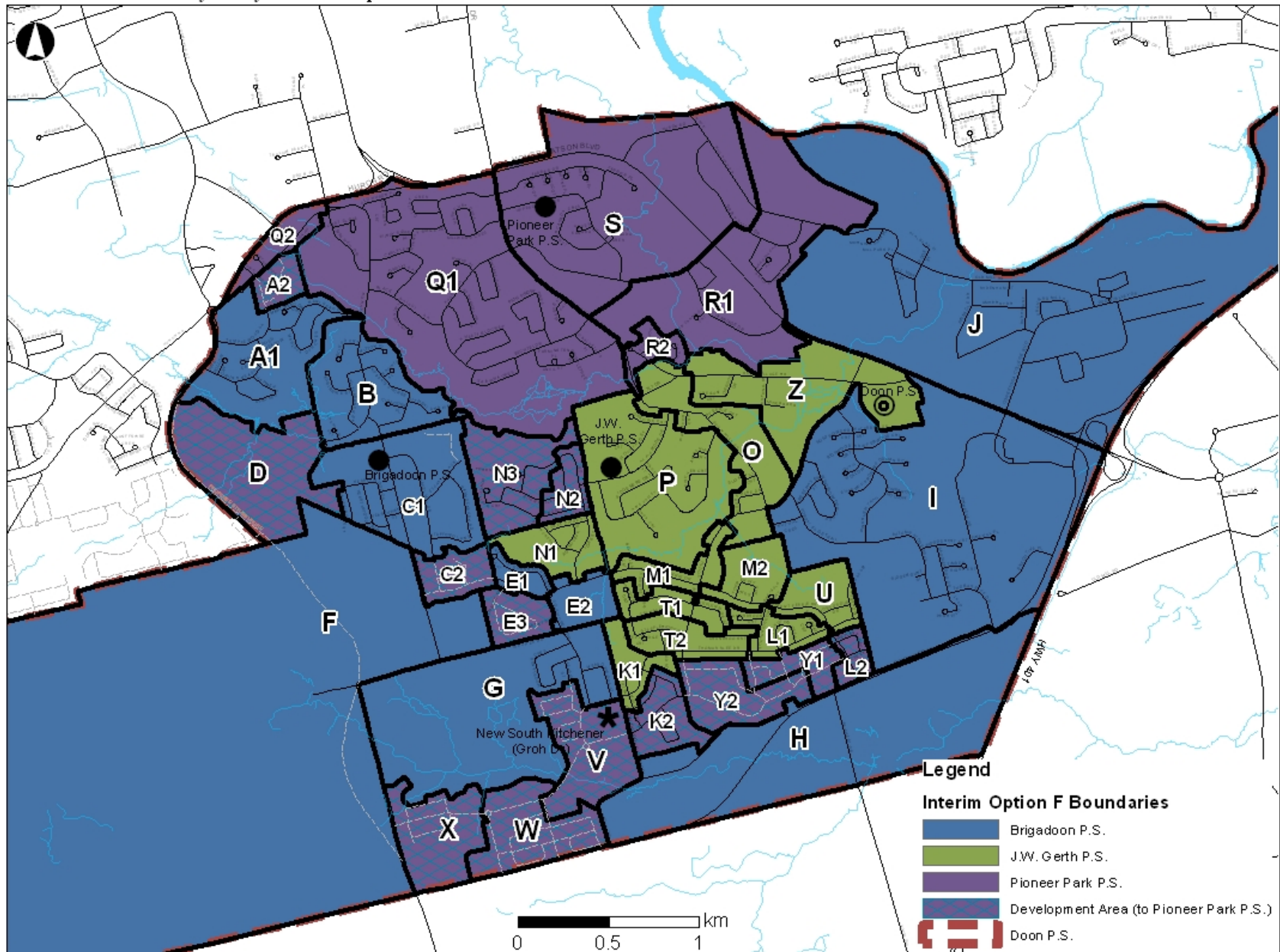
Interim Option E

School	2014			2015		
	Grades	Enrolment	Portables	Grades	Enrolment	Portables
Brigadoon P.S.	JK-5	495	3	JK-5	540	5
Doon P.S.	4-8	705	16	5-8	690	16
J.W. Gerth P.S.	JK-3	575	2	JK-4	715	9
Pioneer Park P.S.	JK-6	370	3	JK-6	370	3
New School		0			0	
Development Areas		0			5	
Total		2145	24		2320	32



Interim Option F

Doon South Boundary Study - Interim Option Boundaries



Option F Description:

2014-2015

- Developing areas (A2, C2, D, E3, K2, L2, N2, N3, V, W, X, Y) assigned to Pioneer Park P.S. (70 students)
- All Grade 5-6 students in the 2013 J.W. Gerth P.S. boundary attend Doon P.S. (130 students)
 - Exception: Special Education students in congregated classes

2015-2016

- Developing areas (A2, C2, D, E3, K2, L2, N2, N3, V, W, X, Y) assigned to Pioneer Park P.S. (160 students)
- All Gr. 5-6 students in Areas K1, L1, M, N1, O, P, T, U, Z (J.W. Gerth P.S. boundary) attend Doon P.S. (165 students)
 - Exception: Special Education students in congregated classes

2016-2017

- Depends on Scenario

2017-2018

- Depends on Scenario

Interim Option F

	2014			2015		
School	Grades	Enrolment	Portables	Grades	Enrolment	Portables
Brigadoon P.S.	JK-6	555	6	JK-6	595	8
Doon P.S.	5-8	510	8	5-8	580	11
J.W. Gerth P.S.	JK-4	640	5	JK-4	625	4
Pioneer Park P.S.	JK-6	440	6	JK-6	530	10
New School		0			0	
Development Areas		0			0	
Total		2140	24		2330	32



Meeting Dates

- **Public Meeting #2:** December 5, 7 PM @ Doon P.S.
- **Working Group #5:** Tuesday December 10, 4:30 PM @ Brigadoon P.S.



Contact Information

- Website: www.wrdsb.ca
 - » About>Planning>Boundary Studies
 - » Doon South Boundary Study
- E-mail: boundaryfeedback@wrdsb.on.ca
- Phone: 519-570-0003 ext. 4419