

Doon South

Boundary Study

Working Group Meeting #2

October 24, 2013

Brigadoon P.S.

4:30 – 6:00 pm



Waterloo Region
District School Board

Agenda

1. Welcome
2. Draft Minutes Review/Approval
3. Requested Materials
4. Draft Objectives/Goals
5. Scenario Discussion
6. Public Meeting #1
7. Roundtable



Board Policy 3002: Elementary School Size and Configuration

- 1.3 The Waterloo Region District School Board believes that an elementary JK-8 school configuration represents a program preference to meet curriculum and developmental needs but that consideration must also be given to:
- 1.3.1 existing facilities, community connections and distance;
 - 1.3.2 existing facilities;
 - 1.3.3 student learning opportunities;
 - 1.3.4 needs of the community;
 - 1.3.5 community growth patterns;
 - 1.3.6 funding, including partnering opportunities.
- 1.4 It is the policy of the Waterloo Region District School Board to use the following guiding principles when building new elementary facilities or additions, and when considering Pupil Accommodation Reviews and School Valuation Reports and Recommendations:
- 1.4.1 JK-8 facilities will ideally have a built capacity of between 500 and 650 students;
 - 1.4.2 JK-6 facilities will ideally have a built capacity of between 350 and 400 students;
 - 1.4.3 JK-6 facilities will be designed to accommodate future expansion to accommodate a JK-8 configuration where practical;
 - 1.4.4 That planning for elementary school configurations consider the following:
 - have at least (2) classes per grade in JK-6 to support professional learning communities;
 - have more than (2) classes per grade in Grades 7 and 8 to support program;

Board Policy 3002: Elementary School Size and Configuration

- minimize the number of schools with FTE enrolments over 650 students, including the Early Learning Program, wherever possible;
 - be sensitive to the impact on elementary students of transitioning between schools.
- 1.4.5 Recognition that existing 7 and 8 configurations are providing an excellent learning opportunity and some will continue in operation for the foreseeable future;
- 1.4.6 That the needs of the early adolescent learners are considered as part of design and operation of new JK-8 facilities and by operating existing 7 and 8 facilities by lessening the number of daily student/teacher contacts;
- 1.4.7 That each configuration has high academic and behavioural expectations;
- 1.4.8 That where possible, the boundaries for JK-6 schools and for JK-8 or 7/8 schools be consistent for grade 6 students moving to grade 7, and grade 8 students moving to secondary school.



2013 Capital Priorities

To be submitted to Ministry of Education on October 31/13 for consideration for Spring 2014 funding allocation

<i>Rank</i>	<i>Site</i>	<i>Description</i>	<i>Estimated Cost</i>
1	Elmira NW (Riverside)	Accommodation - Rebuild (575pp)	\$ 11,107,527 *
2	Meadowlane P.S.	Facility Condition - Rebuild (250pp)	\$ 5,579,541
3	West Waterloo (314 Sweet Gale St - Vista Hills)	Accommodation - New (501pp)	\$ 9,561,577
4	Grand River C.I.	Accommodation - Addition (387pp)	\$ 9,235,182
5	St. Jacob's P.S.	Pupil Accommodation Review Incomplete **	\$ 7,988,202
6	West Kitchener (Seabrook - Rosenberg III)	Accommodation - New (650pp)	\$ 12,032,963
7	Lackner Woods P.S.	Accommodation - Addition (46pp)	\$ 877,909
8	Lexington P.S.	Facility Condition & Accommodation (161pp)	\$ 3,301,721
Total			\$ 59,684,622

Notes:

* Includes estimated \$367,373 unfunded Education Development Charges amount

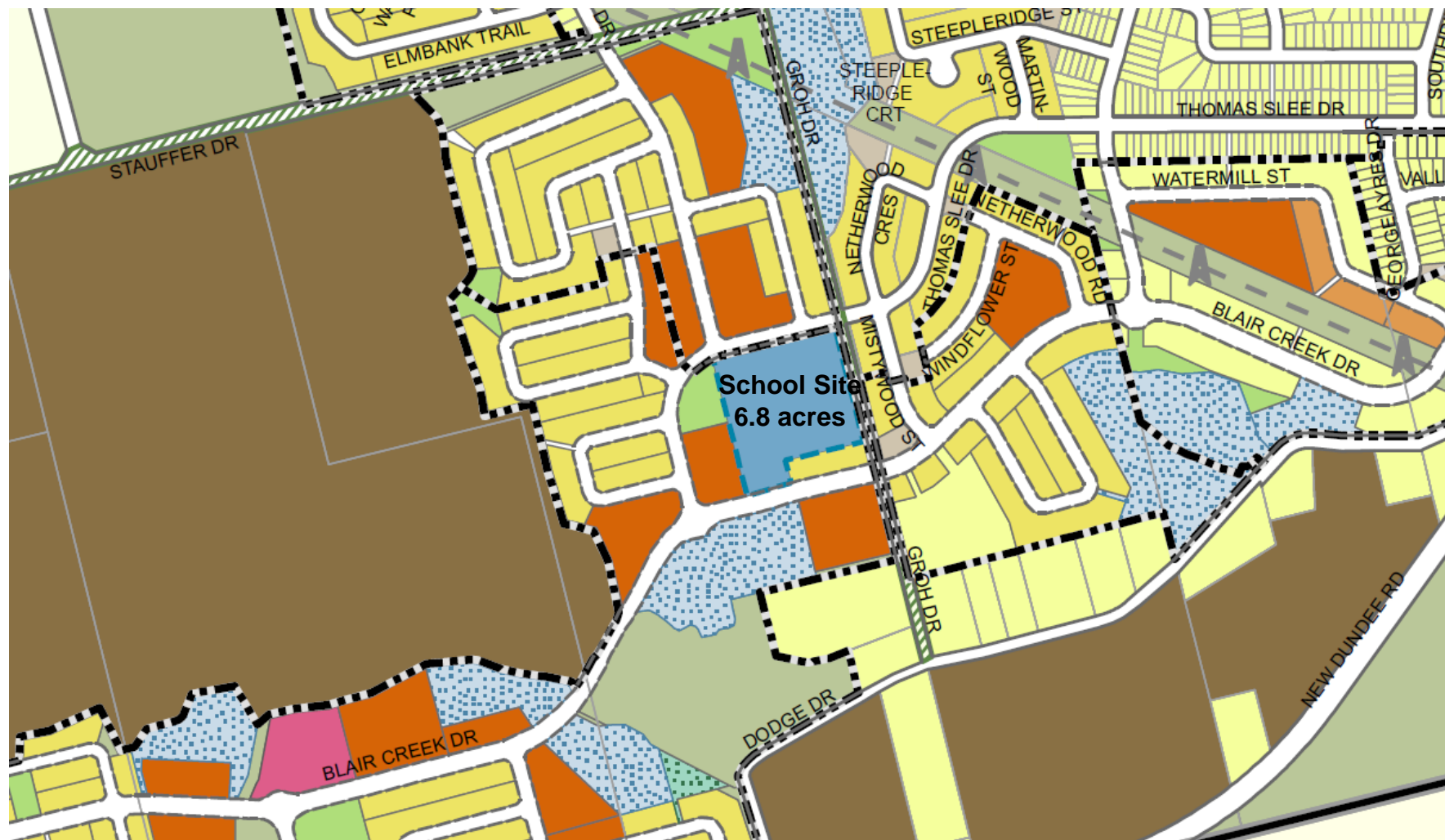
** Assumes most expensive recommendation of Woolwich/Wellesley Townships Accommodation Review (Facility Condition - Rebuild)
Yet to be Determined.



**Waterloo Region
District School Board**

Oct. 24, 2013

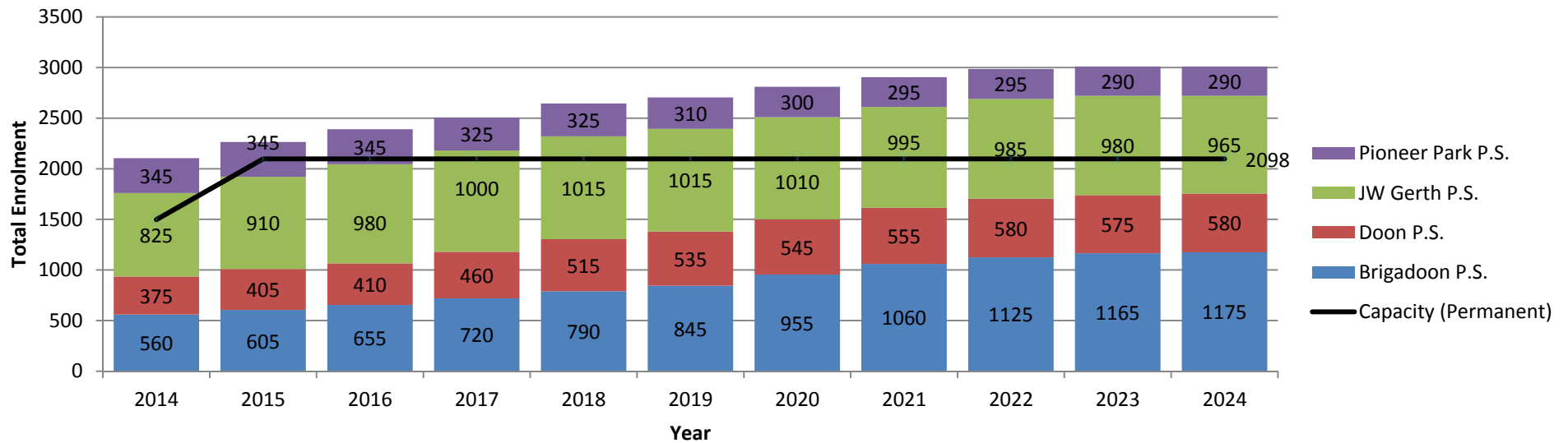
New South Kitchener – Groh Drive School Site



Oct. 24, 2013

Waterloo Region
District School Board

Revised Enrolment Projections (Status Quo)



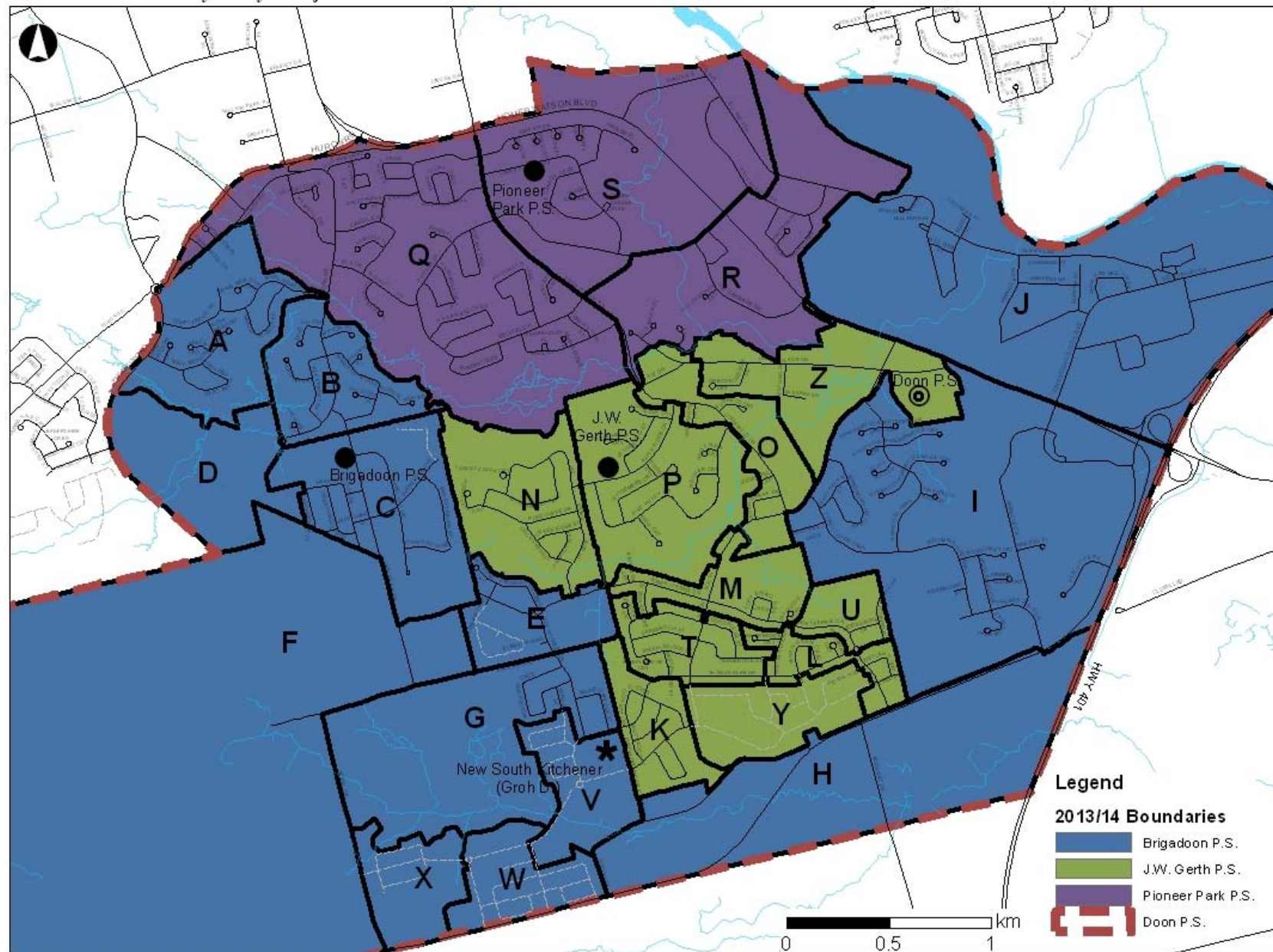
Oct. 24, 2013



Waterloo Region
District School Board

Revised Projections Areas

Doon South Boundary Study - Projection Areas



Draft Goals

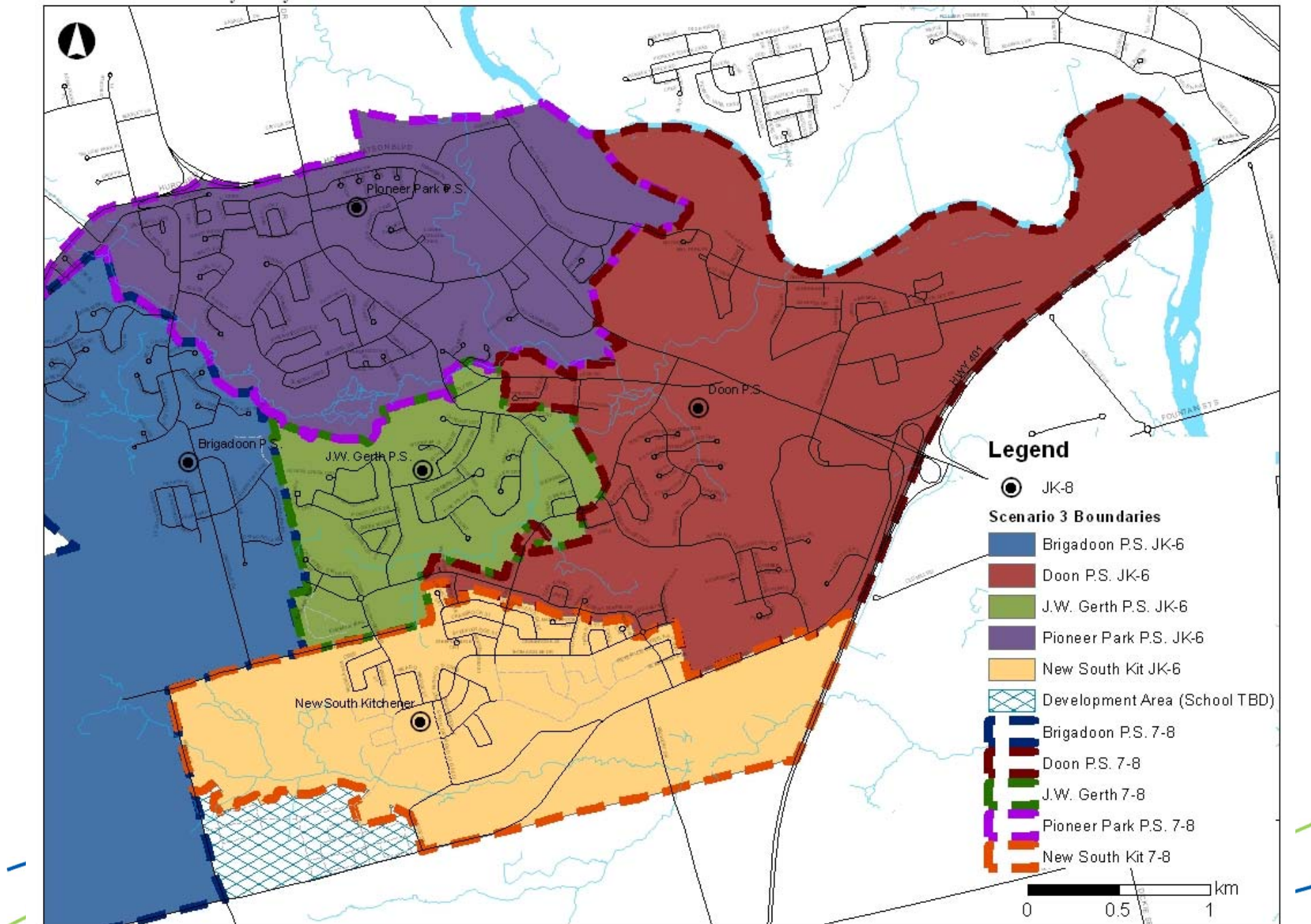
- To establish grade configurations that provide the best learning opportunities for students and staff while giving consideration to:
 - *existing facilities, community connections and distance;*
 - *student learning opportunities*
 - *community growth patterns*
 - *funding, including partnership opportunities*
- To consider facilities and infrastructure (including sites, offices, gyms, specialized classrooms, etc.) necessary to deliver curriculum and support student achievement where changes are proposed
- To establish boundaries that are mid-term (5+ years), and consider:
 - *efficiency of transportation (walking distances)*
 - *permanent capacity of schools and/or future construction requirements (e.g., site, program spaces, safety)*
 - *current and future population density and demographics*
 - *impact on feeder and surrounding schools (i.e., consistent boundaries for Gr. 6 students moving to Gr. 7, and Gr. 8 students moving to secondary school)*
 - *the distribution and accessibility of Special Education and French Immersion programs*
- To minimize the impact on students where changes are proposed (consideration for grandfathering, phasing, etc.)
- To strengthen the Board's business case for additional capacity funding as residential development plans progress in South Kitchener



Draft Objectives

- To establish a boundary for the new South Kitchener Groh Drive elementary school
- To increase the number of students housed in permanent accommodation
- To provide equitable learning opportunities for students and staff by moving towards the following criteria (*from Board Policy 3002*):
 - *JK-6 facilities between 350 and 400 students (approx. 2 classes/grade)*
 - *JK-8 facilities between 500 and 650 students (approx. 2 classes/grade JK-6, 2+ classes/grade 7-8)*
 - *Minimizing the potential for schools with enrolments over 650 students*
- To increase the number of students within walking distance to their assigned school (<1.6 km)
- To reduce the reliance on portable classrooms for long-term student accommodation
- To establish boundaries around "Development Areas" where proposed plans of subdivision are temporarily assigned to holding schools until a permanent accommodation solution can be determined
- To develop an interim (temporary) accommodation strategy, beginning in September 2014, to assist schools with increasing enrolment until such time as the new South Kitchener Groh Drive school is open

Doon South Boundary Study - Scenario 3 Boundaries

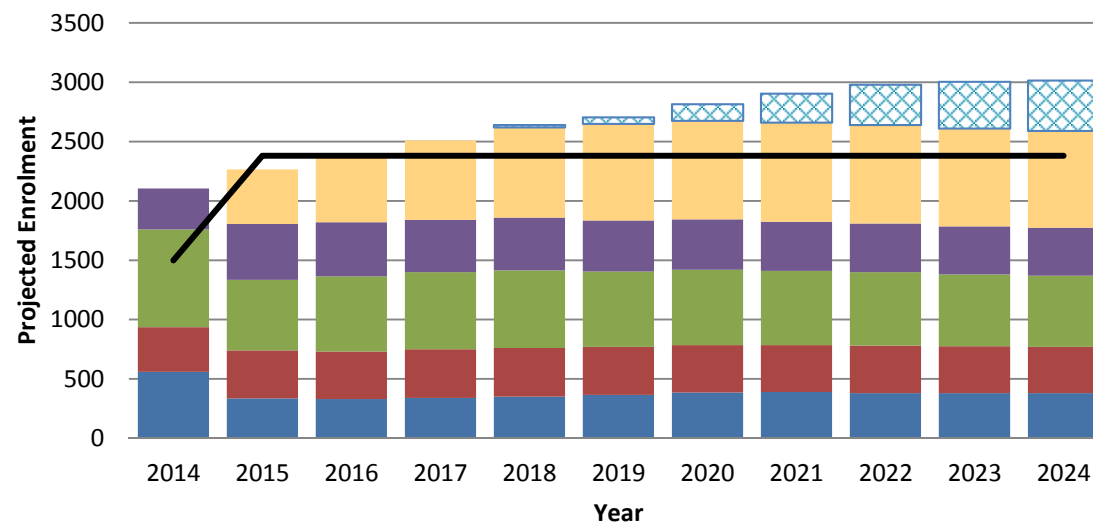


Scenario 3 Draft Enrolment Projections

Brigadoon P.S.	383		383	JK-8	560	335	330	340	350	365	385	390	380	380	380
Doon P.S.	331	52	383	JK-8	375	405	400	410	410	405	400	395	400	395	390
J.W. Gerth P.S.	494	138	632	JK-8	825	595	635	650	655	635	635	625	620	605	600
Pioneer Park P.S.	290	92	382	JK-8	345	470	455	440	445	430	425	415	410	405	405
New School	0	600	600	JK-8	0	460	565	670	760	815	830	835	830	825	815
Development Areas	0		0		0	0	0	0	20	55	140	245	340	395	425
Total	1498	882	2380		2105	2265	2385	2510	2640	2705	2815	2905	2980	3005	3015
Capacity (Permanent)					1498	2380	2380	2380	2380	2380	2380	2380	2380	2380	2380

Note: Projections do not currently consider French Immersion program location – subject to change

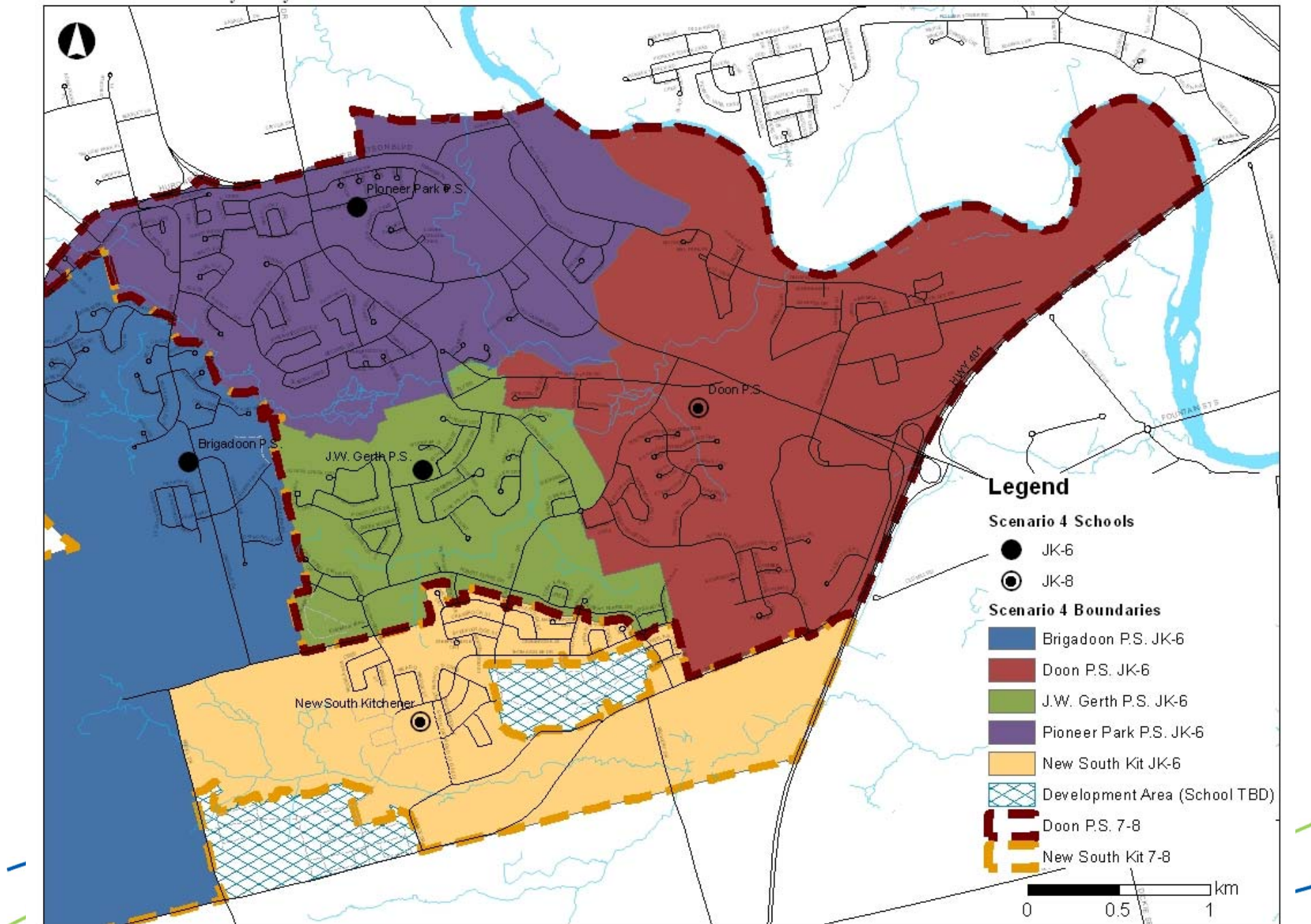
Doon South - Scenario 3



■ Brigadoon P.S. ■ Doon P.S. ■ J.W. Gerth P.S.
■ Pioneer Park P.S. ■ New School ▨ Development Areas
— Capacity (Permanent)

Oct. 24, 2013

Doon South Boundary Study - Scenario 4 Boundaries



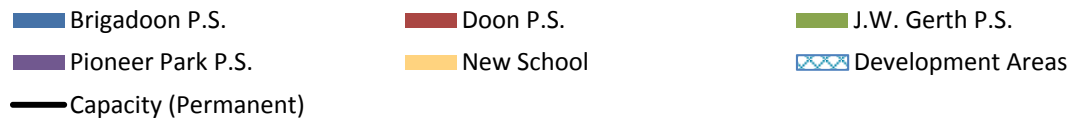
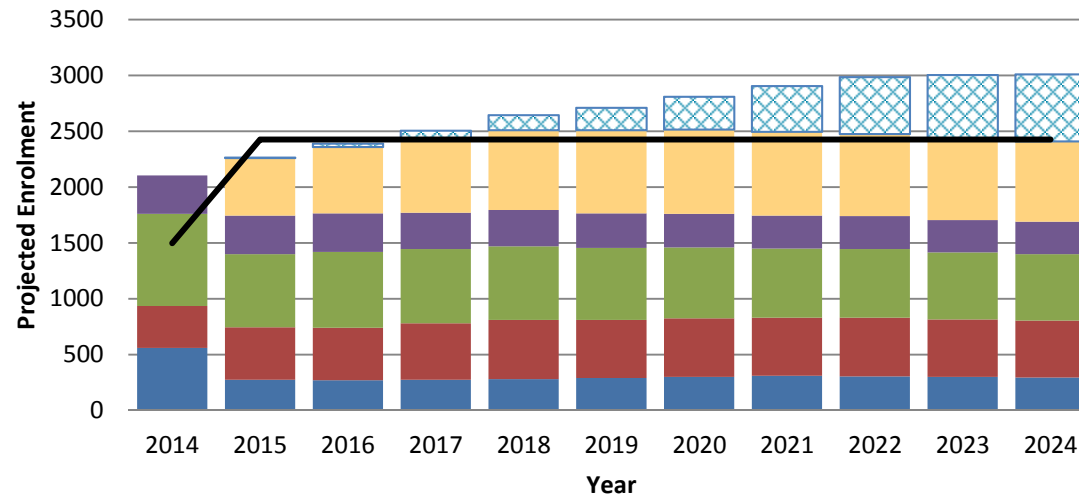
Scenario 4 Draft Enrolment Projections

Scenario 4

School	Current Capacity	New Capacity	Total Capacity	Grades	Year										
					2014	2015	2016	2017	2018	2019	2020	2021	2022	2023	2024
Brigadoon P.S.	383		383	JK-6	560	275	270	275	280	290	300	310	305	300	295
Doon P.S.	331	190	521	JK-8	375	470	470	505	530	520	525	520	525	515	510
J.W. Gerth P.S.	494	138	632	JK-6	825	655	680	665	660	645	635	620	615	600	595
Pioneer Park P.S.	290		290	JK-6	345	345	345	325	325	310	300	295	295	290	290
New School	0	600	600	JK-8	0	515	595	665	715	745	755	750	735	730	720
Development Areas	0		0		0	5	30	70	135	200	295	410	510	570	600
Total	1498	928	2426		2105	2265	2390	2505	2645	2710	2810	2905	2985	3005	3010

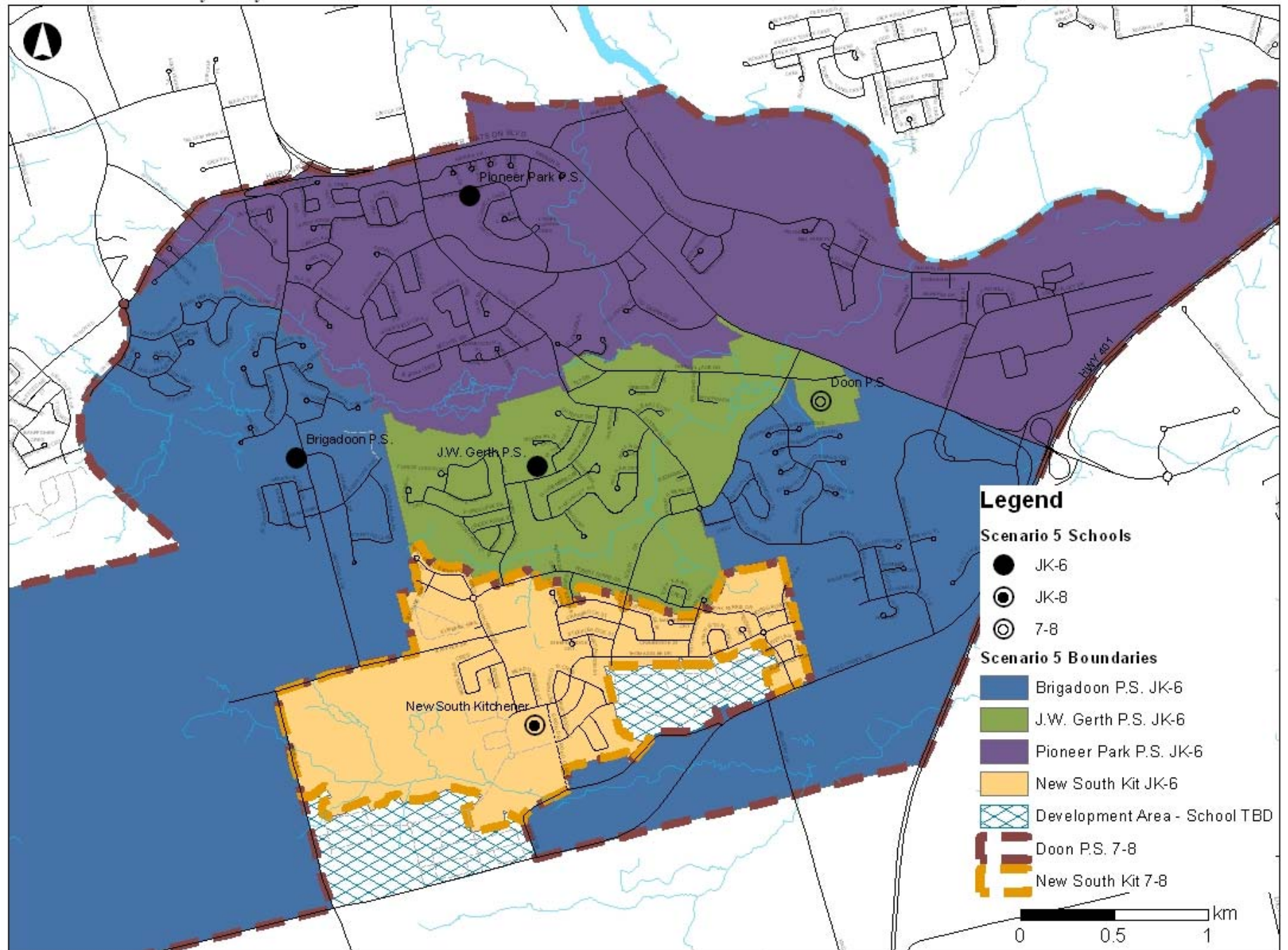
Note: Projections do not currently consider French Immersion program location – subject to change

Doon South - Scenario 4



Oct. 24, 2013

Doon South Boundary Study - Scenario 5 Boundaries



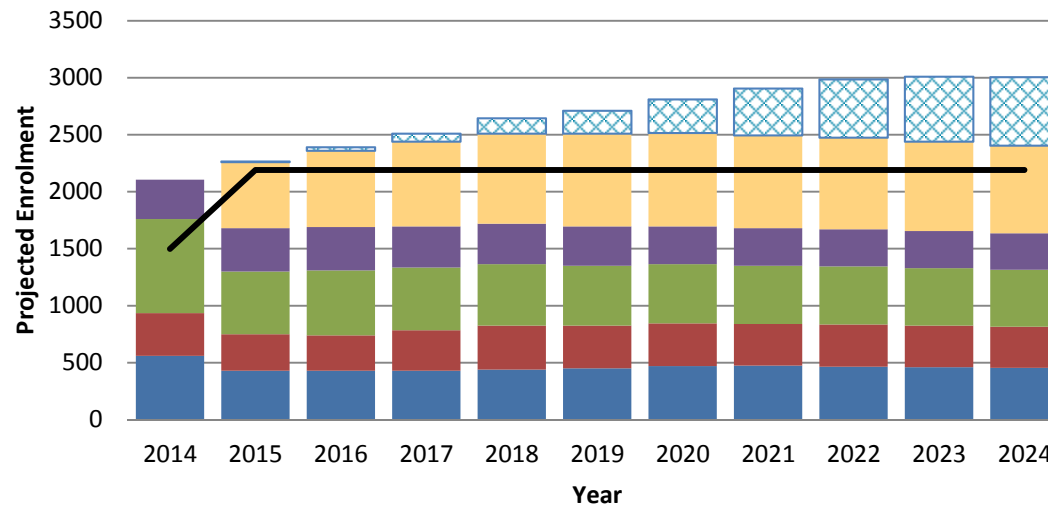
Scenario 5 – Draft Enrolment Projections

Scenario 5

School	Current Capacity	New Capacity	Total Capacity	Grades	Year										
					2014	2015	2016	2017	2018	2019	2020	2021	2022	2023	2024
Brigadoon P.S.	383	92	475	JK-6	560	430	430	430	440	450	470	475	465	460	455
Doon P.S.	331		331	7-8	375	320	310	355	385	375	375	365	370	365	360
J.W. Gerth P.S.	494		494	JK-6	825	550	570	550	540	525	520	510	510	505	500
Pioneer Park P.S.	290	92	382	JK-6	345	380	380	360	355	345	330	330	325	325	320
New School	0	600	600	JK-8	0	580	670	745	790	815	820	815	805	785	770
Development Areas	0		0		0	5	30	70	135	200	295	410	510	570	600
Total	1498	784	2282		2105	2265	2390	2510	2645	2710	2810	2905	2985	3010	3005

Note: Projections do not currently consider French Immersion program location – subject to change

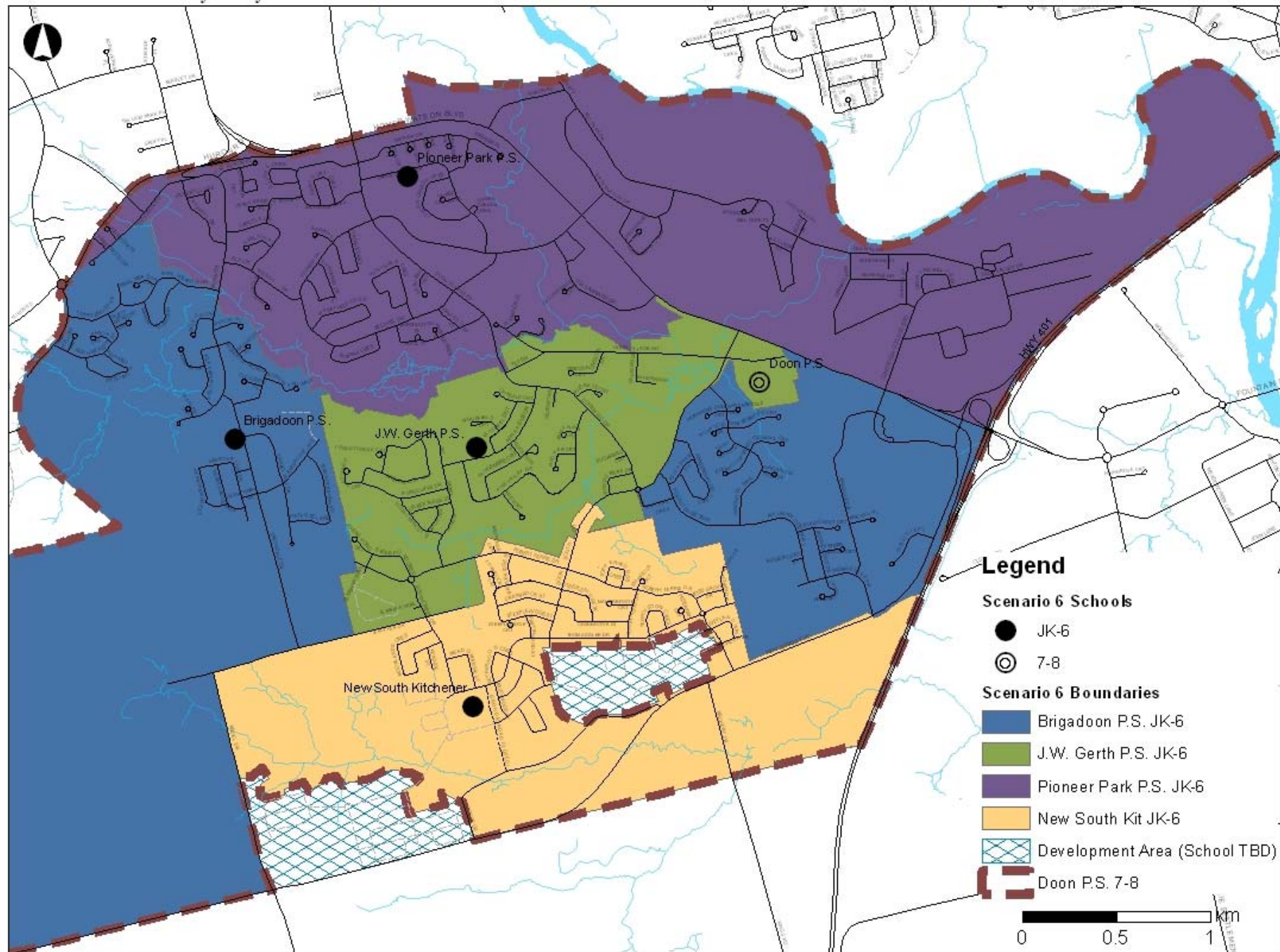
Doon South - Scenario 5



■ Brigadoon P.S.
 ■ Doon P.S.
 ■ J.W. Gerth P.S.
 ■ Pioneer Park P.S.
 ■ New School
 ■ Development Areas
 — Capacity (Permanent)

Oct. 24, 2013

Doon South Boundary Study - Scenario 6 Boundaries



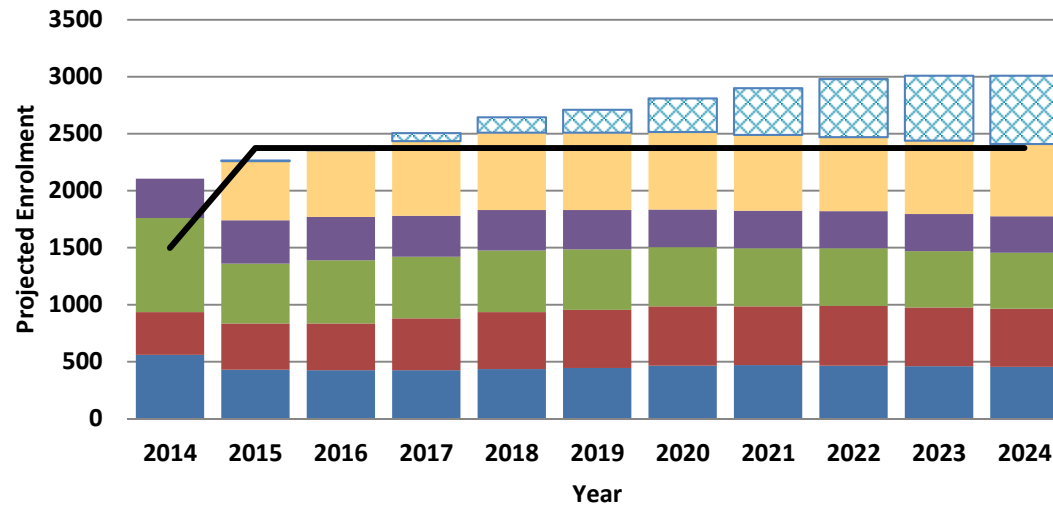
Scenario 6 - Draft Enrolment Projections

Scenario 6

School	Current Capacity	New Capacity	Total Capacity	Grades	Year										
					2014	2015	2016	2017	2018	2019	2020	2021	2022	2023	2024
Brigadoon P.S.	383	92	475	JK-6	560	430	425	425	435	445	465	470	465	460	455
Doon P.S.	331	184	515	7-8	375	405	410	455	500	510	520	515	525	515	510
J.W. Gerth P.S.	494		494	JK-6	825	525	555	540	540	530	520	510	505	495	490
Pioneer Park P.S.	290	92	382	JK-6	345	380	380	360	355	345	330	330	325	325	320
New School	0	600	600	JK-6	0	520	585	655	680	680	680	665	650	645	635
Development Areas	0		0		0	5	30	70	135	200	295	410	510	570	600
Total	1498	968	2466		2105	2265	2385	2505	2645	2710	2810	2900	2980	3010	3010

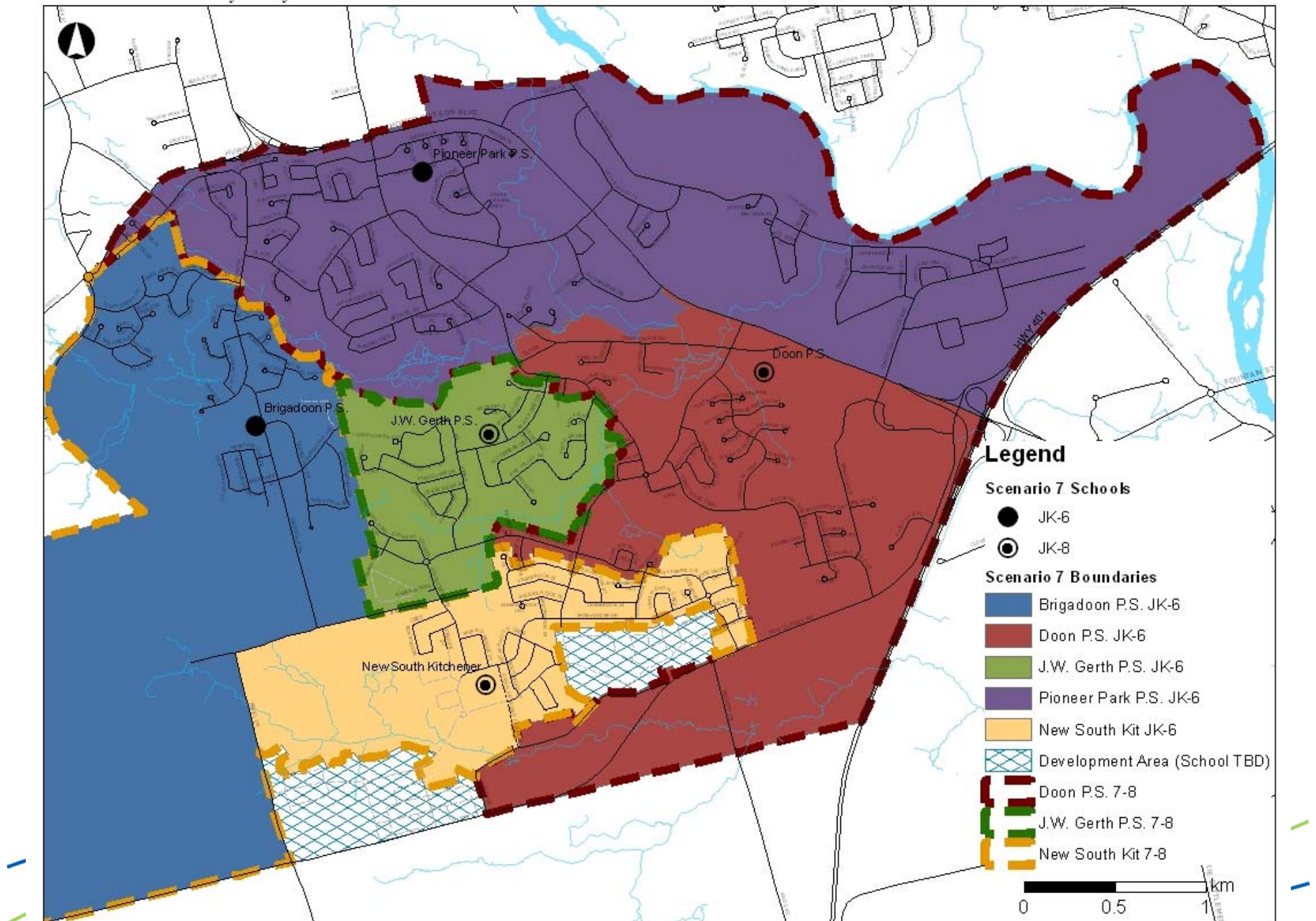
Note: Projections subject to change – does not consider French Immersion program location

Doon South - Scenario 6



■ Brigadoon P.S. ■ Doon P.S. ■ J.W. Gerth P.S.
■ Pioneer Park P.S. ■ New School ▨ Development Areas
— Capacity (Permanent)

Doon South Boundary Study - Scenario 7 Boundaries



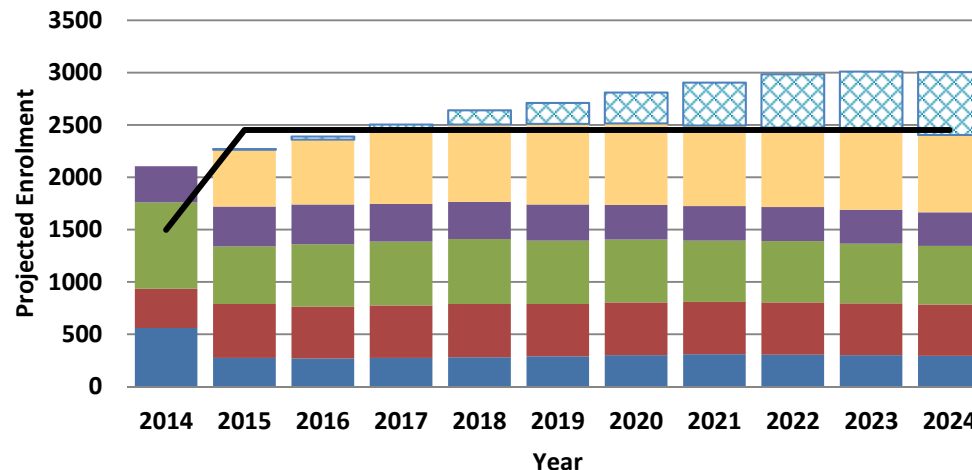
Scenario 7 - Draft Enrolment Projections

Scenario 7

School	Current Capacity	New Capacity	Total Capacity	Grades	Year										
					2014	2015	2016	2017	2018	2019	2020	2021	2022	2023	2024
Brigadoon P.S.	383		383	JK-6	560	275	270	275	280	290	300	310	305	300	295
Doon P.S.	331	170	501	JK-8	375	515	495	500	510	500	505	500	500	495	490
J.W. Gerth P.S.	494	92	586	JK-8	825	550	595	610	620	605	600	585	585	570	560
Pioneer Park P.S.	290	92	382	JK-6	345	380	380	360	355	345	330	330	325	325	320
New School	0	600	600	JK-8	0	545	620	690	740	770	780	770	760	750	740
Development Areas	0		0		0	5	30	70	135	200	295	410	510	570	600
Total	1498	954	2452		2105	2270	2390	2505	2640	2710	2810	2905	2985	3010	3005

Note: Projections subject to change – does not consider French Immersion program location

Doon South - Scenario 7



Brigadoon P.S. Doon P.S. J.W. Gerth P.S.
 Pioneer Park P.S. New School Development Areas
 Capacity (Permanent)

Oct. 24, 2013

20

Scenario Summary By School

Brigadoon P.S.

Scenario	Current Capacity	New Capacity	Total Capacity	Grades	Year											
					2015			2016			2017			2018		
					JK-6	7-8	Total	JK-6	7-8	Total	JK-6	7-8	Total	JK-6	7-8	Total
Scenario 3 (A, B, C, D, F)	383	0	383	JK-8	275	60	335	270	60	330	275	65	340	280	70	350
Scenarios 4 & 7 (A, B, C, D, F)	383	0	383	JK-6	275		275	270		270	275		275	280		280
Scenario 5 (A, B, C, D, F, H, I)	383	0	383	JK-6	430		430	430		430	430		430	440		440
Scenario 6 (A, B, C, D, F, I)	383	0	383	JK-6	430		430	425		425	425		425	435		435

Scenarios 5 and 6 are the best enrolment totals for Brigadoon P.S. as a JK-6 school
 Scenario 3 is not an ideal enrolment for a JK-8 school

Doon P.S.

Scenario	Current Capacity	New Capacity	Total Capacity	Grades	Year											
					2015			2016			2017			2018		
					JK-6	7-8	Total	JK-6	7-8	Total	JK-6	7-8	Total	JK-6	7-8	Total
Scenario 3 (I, J, M, U, Z)	331	52	383	JK-8	325	80	405	325	75	400	325	85	410	320	90	410
Scenario 4 (I, J, Z + BGD, JWG, PIO)	331	190	521	JK-8	195	275	470	195	275	470	195	315	505	195	335	530
Scenario 5	331	0	331	7-8		320	320		310	310		355	355		385	385
Scenario 6	331	184	515	7-8		405	405		410	410		455	455		500	500
Scenario 7 (H, I, M, O, Z + PIO)	331	170	501	JK-8	300	215	515	300	195	495	295	205	500	295	215	510

Scenario 5 is the best enrolment total for Doon P.S. as a 7-8 school
 Scenario 7 is the best enrolment total for Doon P.S. as a JK-8 school

Note: Numbers are rounded to the nearest 5, totals may not calculate exactly and do not currently include French Immersion program location

Scenario Summary By School

J.W. Gerth P.S.

Scenario	Current Capacity	New Capacity	Total Capacity	Grades	Year											
					2015			2016			2017			2018		
					JK-6	7-8	Total	JK-6	7-8	Total	JK-6	7-8	Total	JK-6	7-8	Total
Scenario 3 (E, N, P, O)	494	138	632	JK-8	520	70	595	550	85	635	535	115	650	530	125	655
Scenario 4 (E, M, N, O, P, U)	494	138	632	JK-6	655		655	680		680	665		665	660		660
Scenario 5 (M, N, O, P, Z)	494	0	494	JK-6	550		550	570		570	550		550	540		540
Scenario 6 (E, N, O, P, Z)	494	0	494	JK-6	525		525	555		555	540		540	540		540
Scenario 7 (E, N, P)	494	92	586	JK-8	490	60	550	520	75	595	510	105	610	505	115	620

Scenario 6 is the best enrolment total for J.W. Gerth P.S. as a JK-6 school

Scenario 7 is the best enrolment total for J.W. Gerth P.S. as a JK-8 school

Pionner Park P.S.

Scenario	Current Capacity	New Capacity	Total Capacity	Grades	Year											
					2015			2016			2017			2018		
					JK-6	7-8	Total	JK-6	7-8	Total	JK-6	7-8	Total	JK-6	7-8	Total
Scenario 3 (Q, R, S)	290	92	382	JK-8	345	125	470	345	115	455	325	115	440	325	120	445
Scenario 4 (Q, R, S)	290	0	290	JK-6	345		345	345		345	325		325	325		325
Scenarios 5, 6, 7 (J, Q, R, S)	290	92	382	JK-6	380		380	380		380	360		360	355		355

Scenarios 5, 6, 7 are the best enrolment totals for Pioneer Park P.S. as a JK-6 school

Scenario 3 enrolment total can work for Pioneer Park P.S. as a JK-8 school (not ideal)

Note: Numbers are rounded to the nearest 5, totals may not calculate exactly and do not currently include French Immersion program location



Waterloo Region
District School Board

Scenario Summary By School

New South Kitchener P.S.

Scenario	Current Capacity	New Capacity	Total Capacity	Grades	Year											
					2015			2016			2017			2018		
					JK-6	7-8	Total	JK-6	7-8	Total	JK-6	7-8	Total	JK-6	7-8	Total
Scenario 3 (G, H, K, L, T, V, Y)	0	600	600	JK-8	395	70	460	485	80	565	590	85	670	650	120	760
Scenario 4 (G, H, K, L, T, V + BGD)	0	600	600	JK-8	385	130	515	460	135	595	525	140	665	550	165	715
Scenario 5 (E, G, K, L, T, U, V)	0	600	600	JK-8	495	85	580	575	100	670	645	100	745	675	115	790
Scenario 6 (G, H, K, L, M, T, U, V)	0	600	600	JK-6	520		520	585		585	655		655	680		680
Scenario 7 (G, K, L, T, U, V + BGD)	0	600	600	JK-8	410	135	545	480	140	620	545	145	690	570	170	740

Scenario 6 is too big as a JK-6 school

Scenarios 4 and 7 are the best enrolment total for the New South Kitchener school as a JK-8 school

Scenario	Best Scenarios by School (based on enrolment)				
	Brigadoon	Doon	JW Gerth	Pioneer Park	New South Kit
3					
4					X
5	X	X		X	
6	X		X	X	
7		X	X	X	X

Note: Numbers are rounded to the nearest 5, totals may not calculate exactly and do not currently include French Immersion program location

Meeting Dates

- **Public Meeting #1:** November 5, 7 PM @ Huron Heights S.S.
- **Working Group #3:** November 6, 4:30 PM @ J.W. Gerth P.S.
- **Working Group #4:** November 21, 4:30 PM @ Doon P.S.
- **Public Meeting #2:** December 5, 7 PM @ Doon P.S.
- **Working Group #5:** TBD



Contact Information

- Website: www.wrdsb.ca
 - » About>Planning>Boundary Studies
 - » Doon South Boundary Study
- E-mail: boundaryfeedback@wrdsb.on.ca
- Phone: 519-570-0003 ext. 4419

