

Doon South
Boundary Study
Working Group Meeting #4

November 21, 2013

Doon P.S.

4:30 – 6:00 pm



Waterloo Region
District School Board

Agenda

1. Welcome
2. Draft Minutes Review/Approval
3. Business Arising from Minutes
 - a) Revised Goals/Objectives
 - b) Update on Child Care
 - c) Youth Development and Extended Day programs
4. Scenario Discussion
 - a) Scenario 9
 - b) Scenario 10
 - c) Scenario 11
 - d) Scenario 12
5. Transitions/Interim Solutions Discussion
6. Public Meeting #2
7. Roundtable



Revised Goals

- To establish grade configurations that provide the best learning opportunities for students and staff while giving consideration to:
 - *existing facilities, community connections and distance;*
 - *student learning opportunities*
 - *community growth patterns*
 - *funding, including partnership opportunities*
- To consider facilities and infrastructure (including sites, offices, gyms, specialized classrooms, etc.) necessary to deliver curriculum and support student achievement where changes are proposed
- To establish boundaries that are mid-term (5+ years), and consider:
 - *efficiency of transportation (walking distances)*
 - *permanent capacity of schools and/or future construction requirements (e.g., site, program spaces, safety)*
 - *current and future population density and demographics*
 - *impact on feeder and surrounding schools (i.e., consistent boundaries for Gr. 6 students moving to Gr. 7, and Gr. 8 students moving to secondary school)*
 - *the distribution and accessibility of Special Education and French Immersion programs*
- To minimize the impact on students *and families* where changes are proposed *by giving consideration for:*
 - *grandfathering*
 - *phasing*
 - *access to child care*
 - *transportation provisions*
- To strengthen the Board's business case for additional capacity funding as residential development plans progress in South Kitchener



Objectives

- To establish a boundary for the new South Kitchener Groh Drive elementary school
- To increase the number of students housed in permanent accommodation in a cost-effective way
- To provide equitable learning opportunities for students and staff by moving towards the following criteria (*from Board Policy 3002*):
 - *JK-6 facilities between 350 and 400 students (approx. 2 classes/grade)*
 - *JK-8 facilities between 500 and 650 students (approx. 2 classes/grade JK-6, 2+ classes/grade 7-8)*
 - *Minimizing the potential for schools with enrolments over 650 students*
- To increase the number of students within walking distance to their assigned school (<1.6 km)
- To establish boundaries around "Development Areas" where proposed plans of subdivision are temporarily assigned to holding schools until a permanent accommodation solution can be determined
- To develop an interim (temporary) accommodation strategy, beginning in September 2014, to assist schools with increasing enrolment until such time as the new South Kitchener Groh Drive school is open



Before and After School Programs

The WRDSB Offers 2 fee-based Before and After School Programs

- *Programs run from 7am to 6pm Monday-Friday, PD Days, March Break and the non-statutory week at Christmas*

Extended Day Program (EDP)

- For children in Grades JK-2 (ages 4 to 7)
- Run by Board staff
- *The WRDSB determines the viability of each school site based on enrolment*

Youth Development Program (YDP)

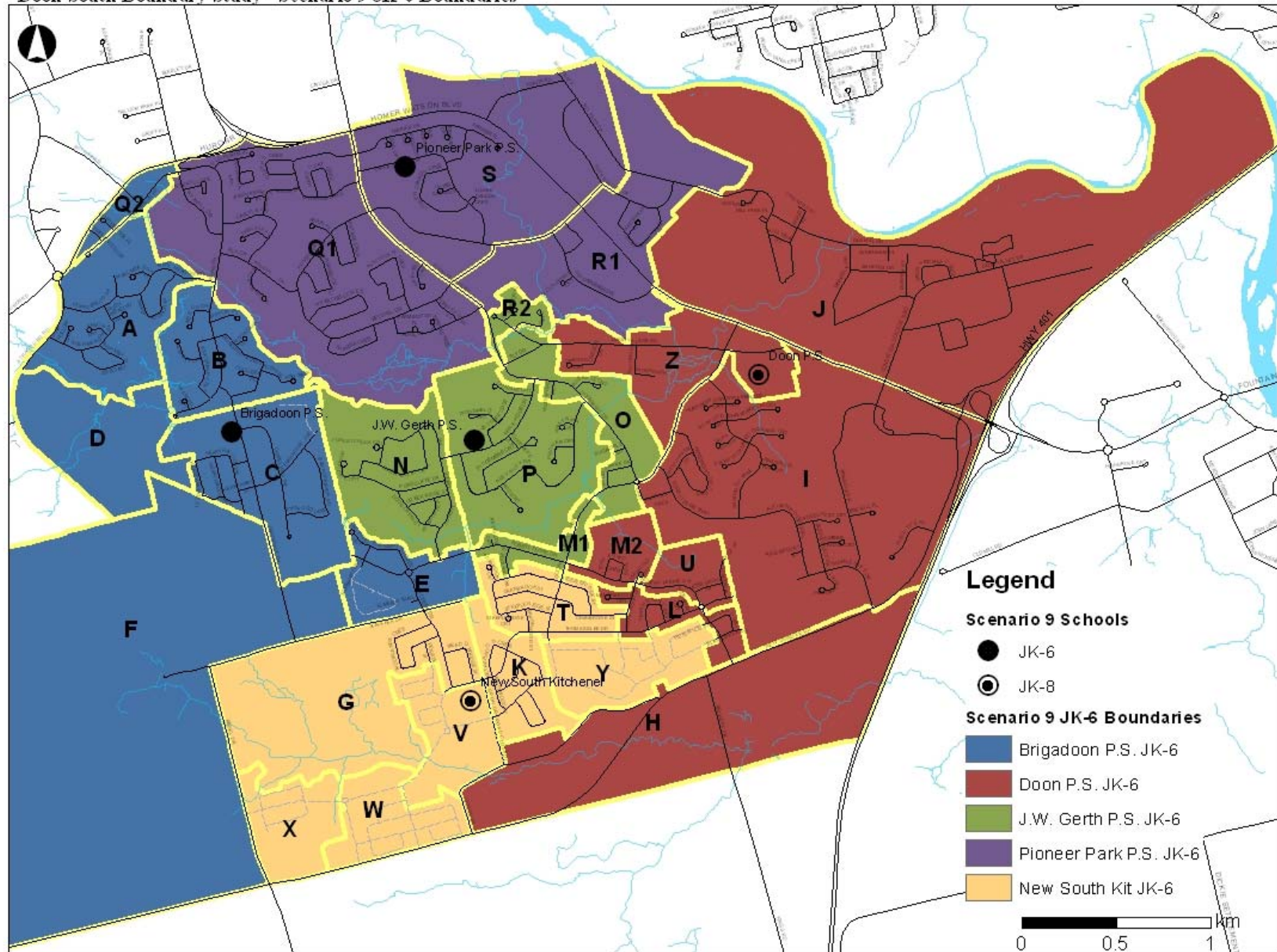
- For children in Grades 3-6 (ages 8 to 12)
- Often run by a 3rd party
- *3rd party operator determines the viability of each school site*

WRDSB 2013-2014 EDP rate is \$24.50
(AM & PM enrolment)



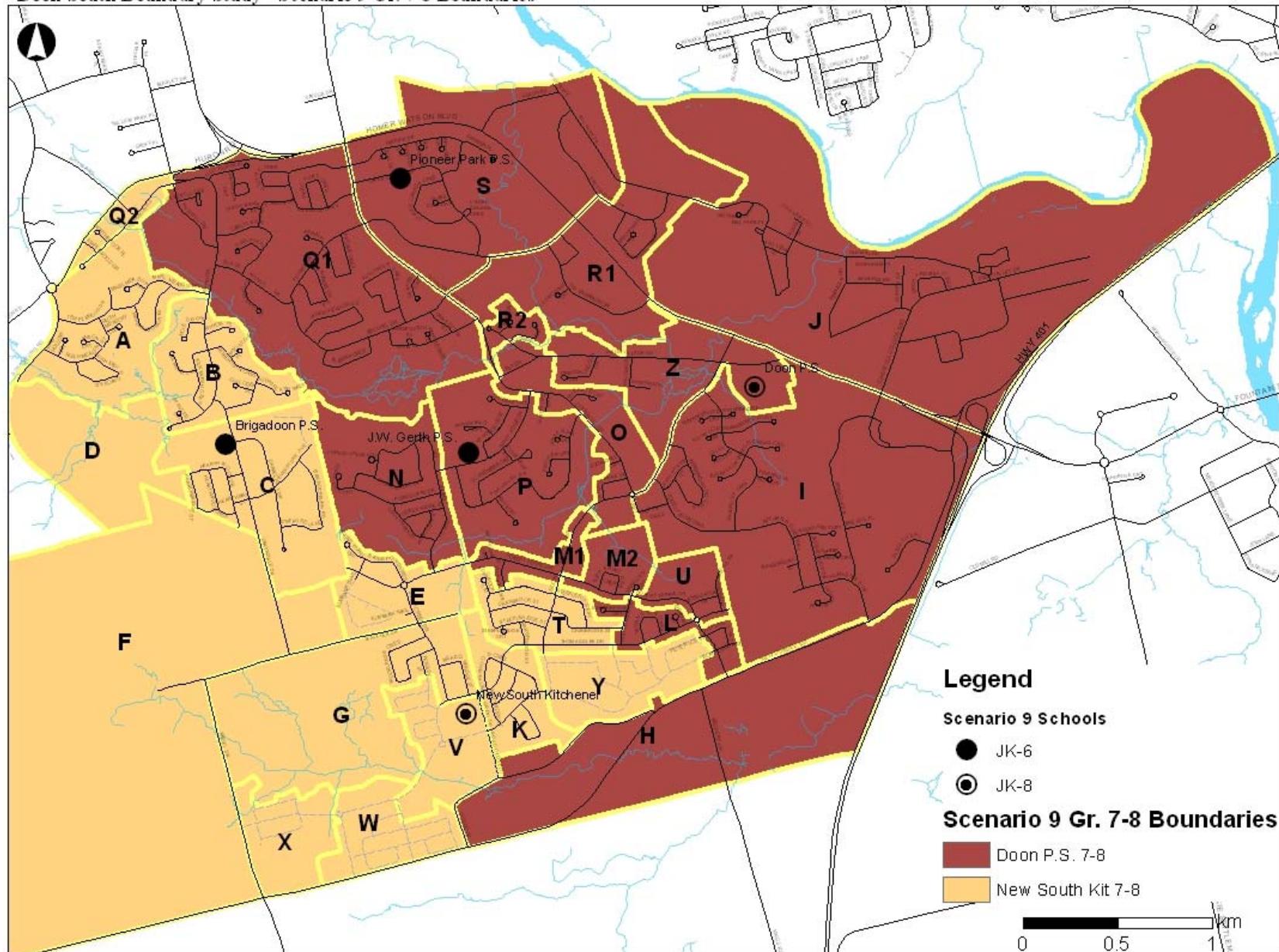
Scenario 9 – JK-6 Boundaries

Doon South Boundary Study - Scenario 9 JK-6 Boundaries



Scenario 9 – 7-8 Boundaries

Doon South Boundary Study - Scenario 9 Gr. 7-8 Boundaries



Scenario 9 – Projections

		Scenario 9																				
School	Scenario 9 Grades	2016-2017							2018-2019						2020-2021							
		JK-6	1-6 FI	7-8	7-8 FI	Total	Capacity	Temp. Capacity	JK-6	1-6 FI	7-8	7-8 FI	Total	Capacity	Temp. Capacity	JK-6	1-6 FI	7-8	7-8 FI	Total	Capacity	Temp. Capacity
Brigadoon P.S.	JK-6	250	215			465	421	2	270	190			460	421	2	290	160			450	421	2
Doon P.S.	JK-8	270	25	305	70	670	331	15	255	70	260	135	720	331	17	250	115	235	160	760	331	19
J.W. Gerth P.S.	JK-6	380	225			605	536	3	345	220			565	536	1	330	175			505	536	
Pioneer Park P.S.	JK-6	375				375	308	3	375				375	308	3	370				370	308	3
New School	JK-8	300	15	55	0	370	600		465	115	135	0	715	600	5	580	115	175	0	870	600	12
Dev. Areas		0		0		0			0		0		0			0				0		
Total		1575	480	360	70	2485	2196	23	1710	595	395	135	2835	2196	28	1820	565	410	160	2955	2196	36

School	Current Capacity	New Capacity (approved)	New Capacity (requires approval)	Total Capacity	Grades	Year								
						2016	2017	2018	2019	2020	2021	2022	2023	2024
Brigadoon P.S.	383	38		421	JK-6	465	460	460	460	455	425	410	390	375
Doon P.S.	331		322	653	JK-8	670	665	720	750	755	780	750	710	695
J.W. Gerth P.S.	494	42		536	JK-6	605	585	560	530	505	480	480	470	465
Pioneer Park P.S.	290	18	46	354	JK-6	375	370	375	375	370	365	365	360	360
New School	0	600	46	646	JK-8	370	540	655	750	875	1000	1120	1210	1235
Dev. Areas				0		0	0	0	0	0	0	0	0	0
Total	1498	698	414	2610		2480	2620	2775	2860	2965	3050	3125	3140	3135

Scenario 9 Description:

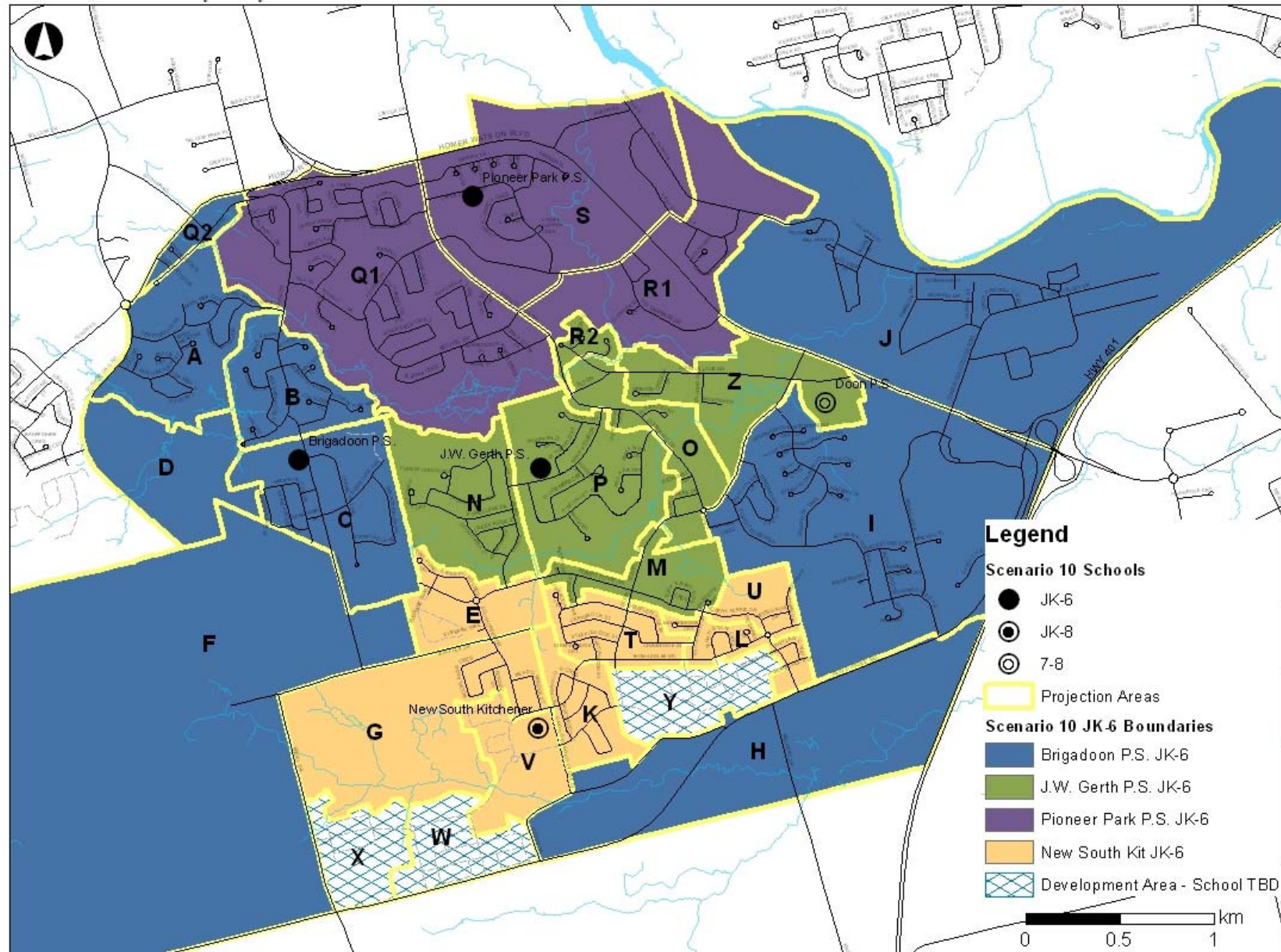
- New South Kitchener school (JK-8) boundary takes in portions of the current Brigadoon P.S. and J.W. Gerth P.S. boundaries (JK-6) and Doon P.S. boundary (7-8), acts as senior (7-8) school for Brigadoon P.S.
- Doon P.S. adds grades JK-6 to become a JK-8 school – boundary takes in existing Brigadoon P.S. and J.W. Gerth P.S. students, and remains as senior (7-8) school for Pioneer Park P.S. and J.W. Gerth P.S. students
- Minor boundary modifications for Brigadoon P.S. (add Area Q2), J.W. Gerth P.S. (add Area R2) and Pioneer Park P.S. (remove Areas Q2 and R2)
- French Immersion program offered at Brigadoon P.S. (1-6), J.W. Gerth P.S. (1-6 by 2016), the New South Kitchener school (1-8 by 2023) and Doon P.S. (1-6 by 2021 and 7-8 by 2014)

Scenario 9 v. Objectives

Objectives	Met?
• To establish a boundary for the new South Kitchener Groh Drive elementary school	<input checked="" type="checkbox"/>
• To increase the number of students housed in permanent accommodation in a cost-effective way	TBD
• To provide equitable learning opportunities for students and staff by moving towards the following criteria (<i>from Board Policy 3002</i>):	
• <i>JK-6 facilities between 350 and 400 students (approx. 2 classes/grade)</i>	<input checked="" type="checkbox"/>
• <i>JK-8 facilities between 500 and 650 students (approx. 2 classes/grade JK-6, 2+ classes/grade 7-8)</i>	<input checked="" type="checkbox"/>
• <i>Minimizing the potential for schools with enrolments over 650 students</i>	<input checked="" type="checkbox"/>
• To increase the number of students within walking distance to their assigned school (<1.6 km)	<input checked="" type="checkbox"/>
• To establish boundaries around "Development Areas" where proposed plans of subdivision are temporarily assigned to holding schools until a permanent accommodation solution can be determined	<input checked="" type="checkbox"/>
• To develop an interim (temporary) accommodation strategy, beginning in September 2014, to assist schools with increasing enrolment until such time as the new South Kitchener Groh Drive school is open	TBD

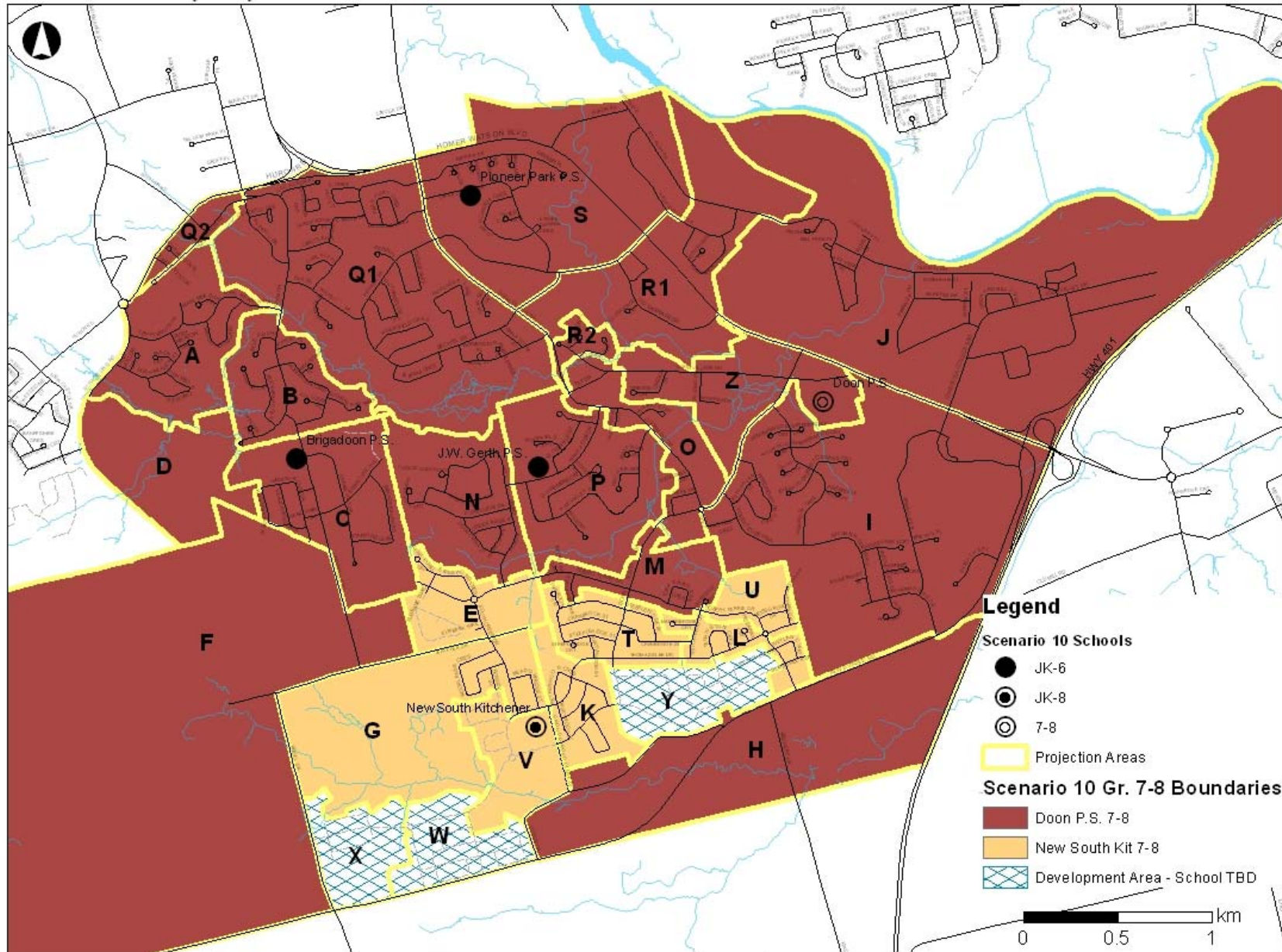
Scenario 10 – JK-6 Boundaries

Doon South Boundary Study - Scenario 10 JK-6 Boundaries



Scenario 10 – 7-8 Boundaries

Doon South Boundary Study - Scenario 10 Gr. 7-8 Boundaries



Scenario 10 – Projections

School	Scenario 10 Grades	Scenario 10																				
		2016-2017							2018-2019							2020-2021						
		JK-6	1-6 FI	7-8	7-8 FI	Total	Capacity	Temp. Capacity	JK-6	1-6 FI	7-8	7-8 FI	Total	Capacity	Temp. Capacity	JK-6	1-6 FI	7-8	7-8 FI	Total	Capacity	Temp. Capacity
Brigadoon P.S.	JK-6	285	225			510	421	4	305	215			520	421	4	340	205			545	421	5
Doon P.S.	7-8			310	70	380	331	2			285	135	420	331	4			275	160	435	331	5
J.W. Gerth P.S.	JK-6	415	230			645	536	5	385	230			615	536	4	370	190			560	536	1
Pioneer Park P.S.	JK-6	375				375	308	3	375				375	308	3	370				370	308	3
New School	JK-8	465	25	45	0	535	600		530	85	95	0	710	600	5	505	145	110	0	760	600	7
Dev. Areas		30		0		30		2	120		15		135		6	265		25		290		13
Total		1570	480	355	70	2475	2196	16	1715	530	395	135	2775	2196	26	1850	540	410	160	2960	2196	34

School	Current Capacity	New Capacity (approved)	New Capacity (requires approval)	Total Capacity	Grades	Year								
						2016	2017	2018	2019	2020	2021	2022	2023	2024
Brigadoon P.S.	383	38	46	467	JK-6	510	515	525	535	540	525	515	500	490
Doon P.S.	331		115	446	7-8	380	380	420	430	430	435	455	455	455
J.W. Gerth P.S.	494	42		536	JK-6	650	630	610	585	565	540	535	525	520
Pioneer Park P.S.	290	18	46	354	JK-6	375	370	375	375	370	365	365	360	360
New School	0	600	46	646	JK-8	535	655	710	740	760	770	750	730	710
Dev. Areas				0		30	70	135	200	295	410	510	570	600
Total	1498	698	253	2449		2480	2625	2775	2860	2960	3050	3125	3140	3135

Scenario 10 Description:

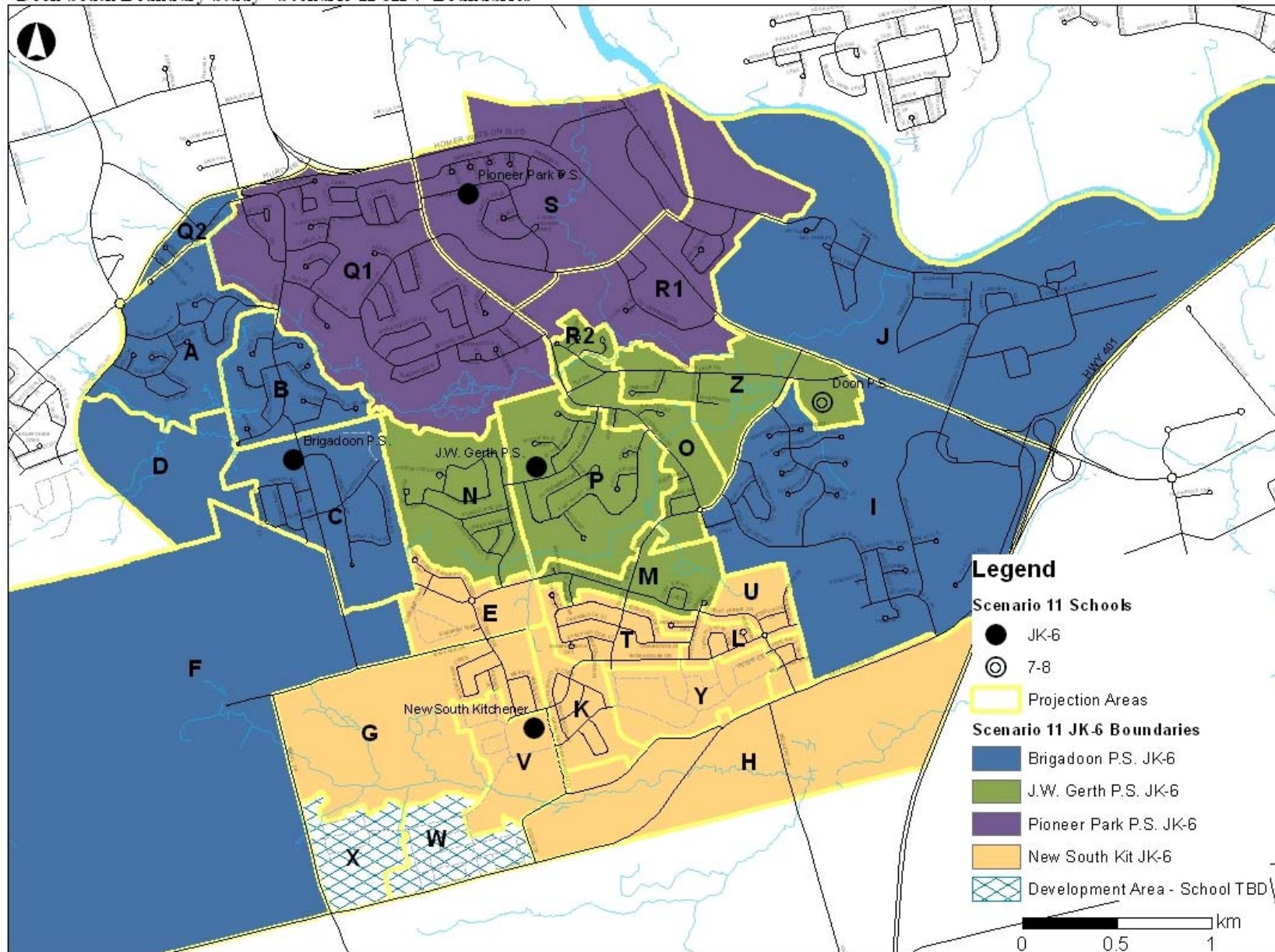
- New South Kitchener school (JK-8) boundary takes in portions of the current Brigadoon P.S. and J.W. Gerth P.S. boundaries (JK-6) and Doon P.S. boundary (7-8)
- Doon P.S. remains as senior (7-8) school for Brigadoon P.S., Pioneer Park P.S. and J.W. Gerth P.S. students
- Minor boundary modifications for Brigadoon P.S. (add Area Q2), J.W. Gerth P.S. (add Area R2) and Pioneer Park P.S. (remove Areas Q2 and R2)
- French Immersion program offered at Brigadoon P.S. (1-6), J.W. Gerth P.S. (1-6 by 2016), the New South Kitchener school (1-6 by 2021) and Doon P.S. (7-8 by 2014)
- Development Areas established – future school to be determined

Scenario 10 v. Objectives

Objectives	Met?
• To establish a boundary for the new South Kitchener Groh Drive elementary school	<input checked="" type="checkbox"/>
• To increase the number of students housed in permanent accommodation in a cost-effective way	TBD
• To provide equitable learning opportunities for students and staff by moving towards the following criteria (<i>from Board Policy 3002</i>):	
• <i>JK-6 facilities between 350 and 400 students (approx. 2 classes/grade)</i>	<input checked="" type="checkbox"/>
• <i>JK-8 facilities between 500 and 650 students (approx. 2 classes/grade JK-6, 2+ classes/grade 7-8)</i>	<input checked="" type="checkbox"/>
• <i>Minimizing the potential for schools with enrolments over 650 students</i>	<input checked="" type="checkbox"/>
• To increase the number of students within walking distance to their assigned school (<1.6 km)	<input checked="" type="checkbox"/>
• To establish boundaries around "Development Areas" where proposed plans of subdivision are temporarily assigned to holding schools until a permanent accommodation solution can be determined	<input checked="" type="checkbox"/>
• To develop an interim (temporary) accommodation strategy, beginning in September 2014, to assist schools with increasing enrolment until such time as the new South Kitchener Groh Drive school is open	TBD

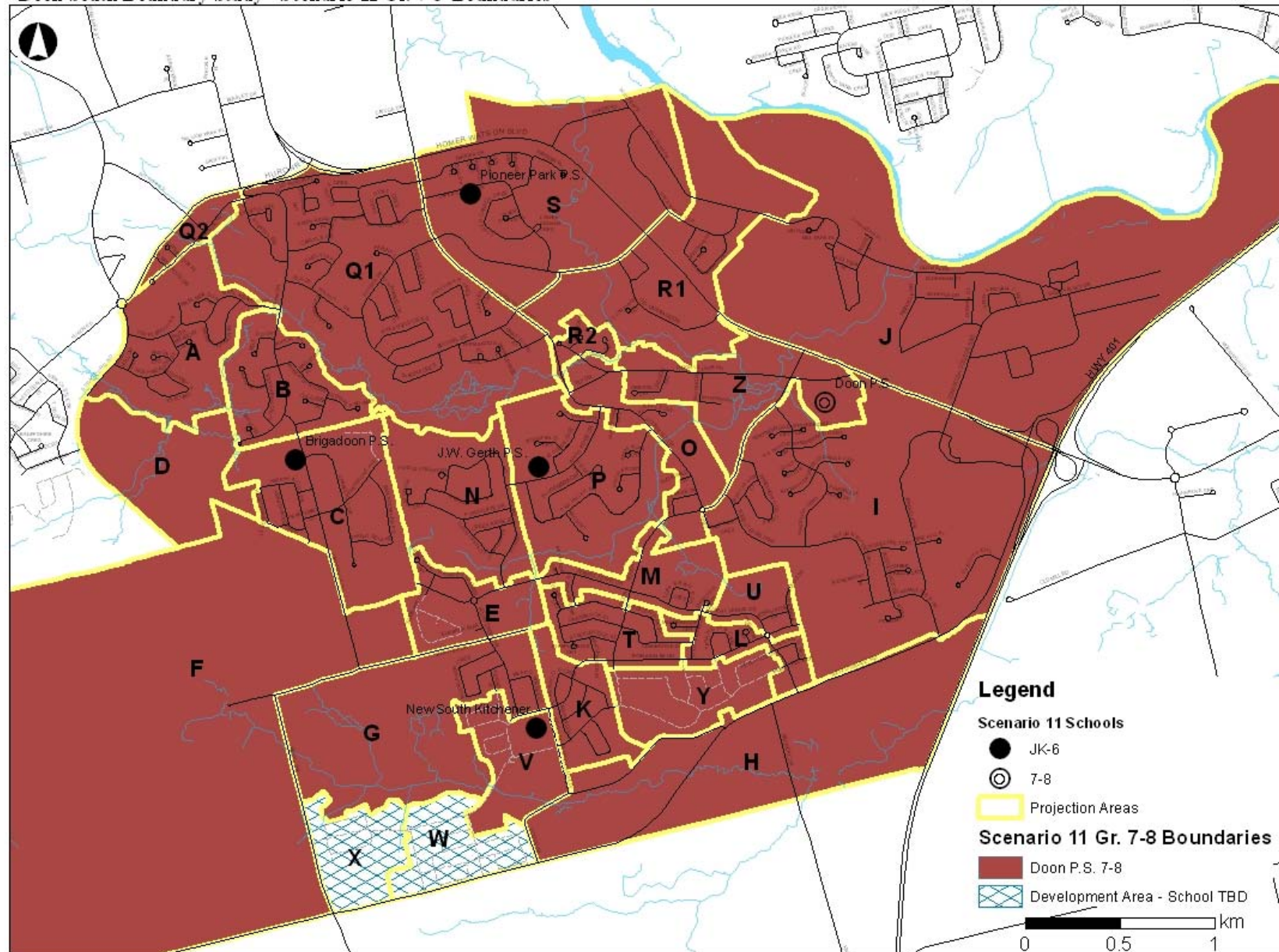
Scenario 11 – JK-6 Boundaries

Doon South Boundary Study - Scenario 11 JK-6 Boundaries



Scenario 11 – 7-8 Boundaries

Doon South Boundary Study - Scenario 11 Gr. 7-8 Boundaries



Scenario 11 – Projections

School	Scenario 11 Grades	Scenario 11																				
		2016-2017							2018-2019							2020-2021						
		JK-6	1-6 FI	7-8	7-8 FI	Total	Capacity	Temp. Capacity	JK-6	1-6 FI	7-8	7-8 FI	Total	Capacity	Temp. Capacity	JK-6	1-6 FI	7-8	7-8 FI	Total	Capacity	Temp. Capacity
Brigadoon P.S.	JK-6	285	225			510	421	4	305	215			520	421	4	340	200			540	421	5
Doon P.S.	7-8			360	70	430	331	4			395	135	530	331	9			405	160	565	331	10
J.W. Gerth P.S.	JK-6	420	230			650	536	5	385	225			610	536	3	370	190			560	536	1
Pioneer Park P.S.	JK-6	375				375	308	3	375				375	308	3	370				370	308	3
New School	JK-6	495	30			525	600		625	90			715	600	5	620	165			785	600	8
Dev. Areas		0		0		0			20		0		20		1	135		5		140		6
Total		1575	485	360	70	2490	2196	16	1710	530	395	135	2770	2196	25	1835	555	410	160	2960	2196	33

School	Current Capacity	New Capacity (approved)	New Capacity (requires approval)	Total Capacity	Grades	Year								
						2016	2017	2018	2019	2020	2021	2022	2023	2024
Brigadoon P.S.	383	38	46	467	JK-6	510	515	520	530	540	525	510	495	485
Doon P.S.	331		276	607	7-8	425	475	530	555	565	570	590	590	590
J.W. Gerth P.S.	494	42		536	JK-6	645	630	610	585	565	540	535	525	520
Pioneer Park P.S.	290	18	46	354	JK-6	375	370	375	375	370	365	365	360	360
New School	0	600	46	646	JK-6	525	630	715	760	785	800	785	780	765
Dev. Areas				0		0	0	20	55	140	245	340	395	425
Total	1498	698	414	2610		2480	2620	2775	2860	2965	3050	3125	3145	3140

Scenario 11 Description:

- New South Kitchener school (JK-6) boundary takes in portions of the current Brigadoon P.S. and J.W. Gerth P.S. boundaries
- Doon P.S. remains as senior (7-8) school for all Doon South Area students
- Minor boundary modifications for Brigadoon P.S. (add Area Q2), J.W. Gerth P.S. (add Area R2) and Pioneer Park P.S. (remove Areas Q2 and R2)
- French Immersion program offered at Brigadoon P.S. (1-6), J.W. Gerth P.S. (1-6 by 2016), the New South Kitchener school (1-6 by 2021) and Doon P.S. (7-8 by 2014)
- Development Area boundaries established – future school to be determined

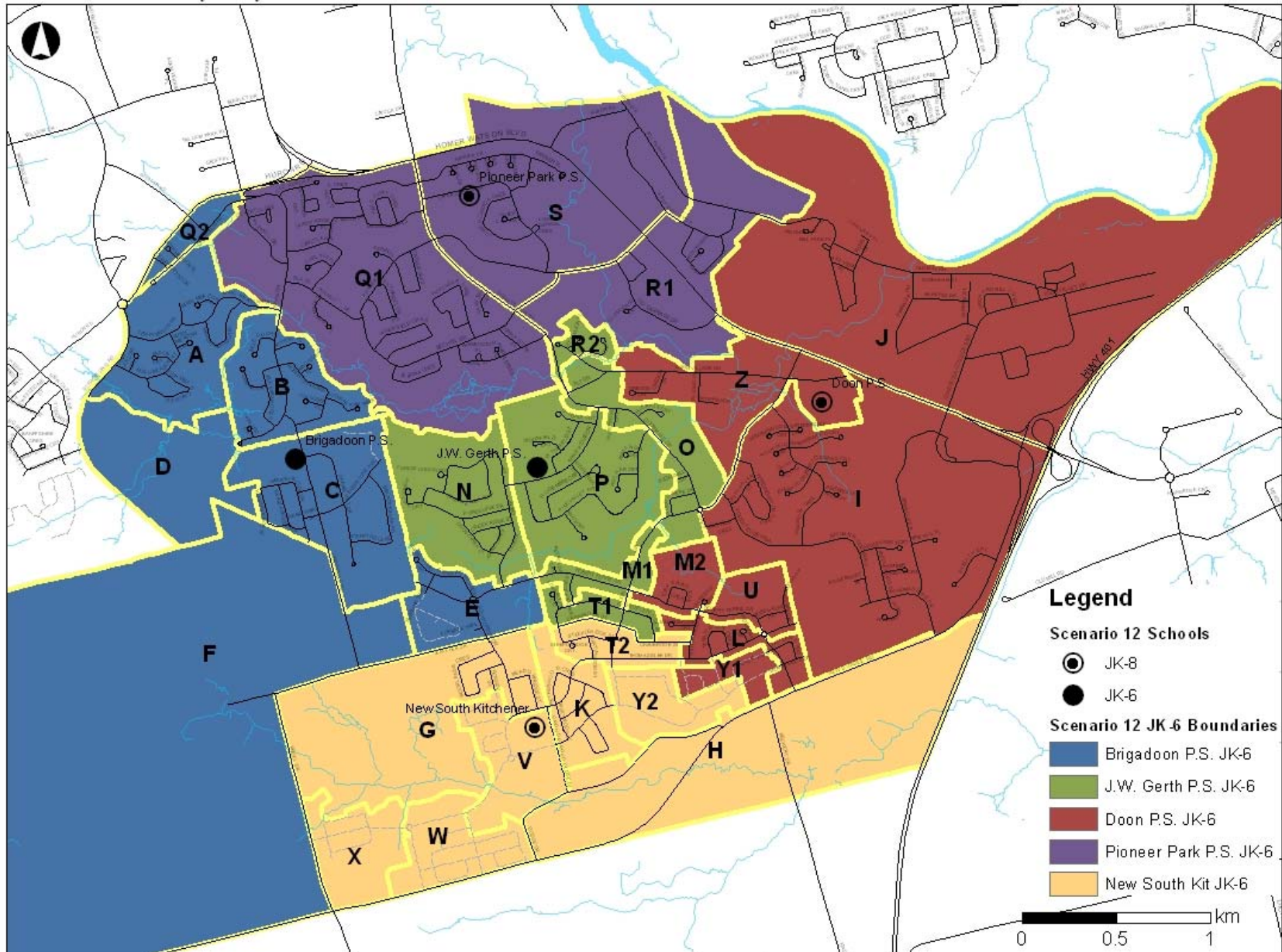
Scenario 11 v. Objectives

Objectives	Met?
• To establish a boundary for the new South Kitchener Groh Drive elementary school	<input checked="" type="checkbox"/>
• To increase the number of students housed in permanent accommodation in a cost-effective way	TBD
• To provide equitable learning opportunities for students and staff by moving towards the following criteria (<i>from Board Policy 3002</i>):	
• <i>JK-6 facilities between 350 and 400 students (approx. 2 classes/grade)</i>	<input checked="" type="checkbox"/>
• <i>JK-8 facilities between 500 and 650 students (approx. 2 classes/grade JK-6, 2+ classes/grade 7-8)</i>	N/A
• <i>Minimizing the potential for schools with enrolments over 650 students</i>	<input checked="" type="checkbox"/>
• To increase the number of students within walking distance to their assigned school (<1.6 km)	<input checked="" type="checkbox"/>
• To establish boundaries around "Development Areas" where proposed plans of subdivision are temporarily assigned to holding schools until a permanent accommodation solution can be determined	<input checked="" type="checkbox"/>
• To develop an interim (temporary) accommodation strategy, beginning in September 2014, to assist schools with increasing enrolment until such time as the new South Kitchener Groh Drive school is open	TBD



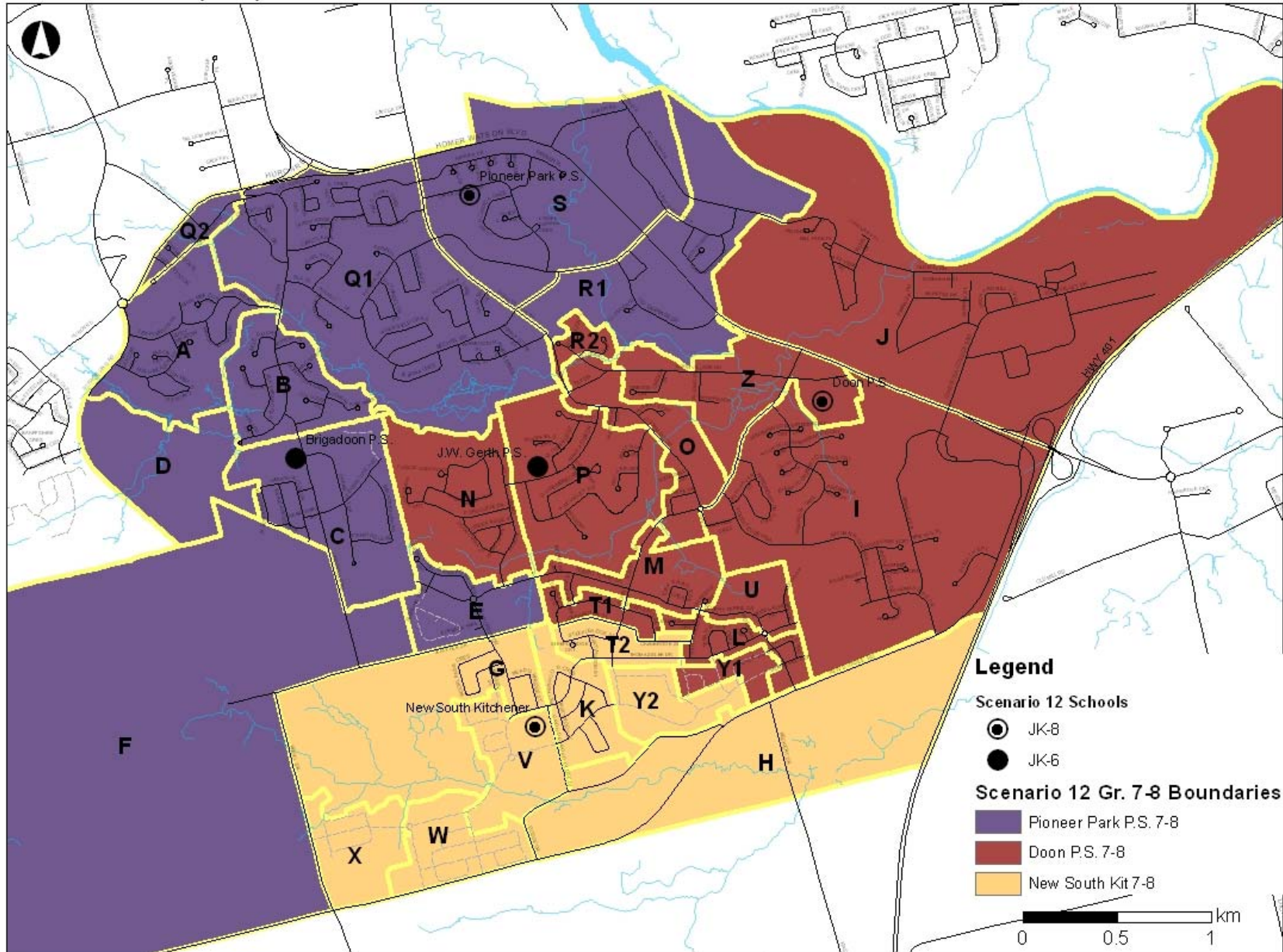
Scenario 12 – JK-6 Boundaries

Doon South Boundary Study - Scenario 12 JK-6 Boundaries



Scenario 12 – 7-8 Boundaries

Doon South Boundary Study - Scenario 12 Gr. 7-8 Boundaries



Scenario 12 – Projections

		Scenario 12																				
School	Scenario 12 Grades	2016-2017							2018-2019						2020-2021							
		JK-6	1-6 FI	7-8	7-8 FI	Total	Capacity	Temp. Capacity	JK-6	1-6 FI	7-8	7-8 FI	Total	OTG	Temp. Capacity	JK-6	1-6 FI	7-8	7-8 FI	Total	OTG	Temp. Capacity
Brigadoon P.S.	JK-6	250	220			470	421	2	270	210			480	421	3	290	180			470	421	2
Doon P.S.	JK-8	285	25	150	70	530	331	9	300	75	175	135	685	331	15	305	125	135	160	725	331	17
J.W. Gerth P.S.	JK-6	440	240			680	536	6	405	250			655	536	5	385	215			600	536	3
Pioneer Park P.S.	JK-8	375		170		545	308	10	375		165		540	308	10	370		200		570	308	11
New School	JK-8	220	0	35	0	255	600		355	0	55	0	410	600		480	35	75	0	590	600	
Dev. Areas		0		0		0			0		0		0			0		0		0		
Total		1570	485	355	70	2480	2196	27	1705	535	395	135	2770	2196	33	1830	555	410	160	2955	2196	33

School	Current Capacity	New Capacity (approved)	New Capacity (requires approval)	Total Capacity	Grades	Year								
						2016	2017	2018	2019	2020	2021	2022	2023	2024
Brigadoon P.S.	383	38		421	JK-6	465	470	480	475	470	445	425	400	375
Doon P.S.	331		406	737	JK-8	530	610	685	725	725	745	755	745	740
J.W. Gerth P.S.	494	42		536	JK-6	680	670	655	625	600	575	565	550	535
Pioneer Park P.S.	290	18	276	584	JK-8	545	540	545	550	575	570	565	570	570
New School	0	600		600	JK-8	255	335	410	485	590	710	810	875	915
Dev. Areas				0		0	0	0	0	0	0	0	0	0
Total	1498	698	682	2878		2475	2620	2775	2855	2960	3045	3120	3140	3135

Scenario 12 Description:

- New South Kitchener school (JK-8) boundary takes in portions of the current Brigadoon P.S. and J.W. Gerth P.S. boundaries (JK-6) and Doon P.S. boundary (7-8)
- Doon P.S. adds grades JK-6 to become a JK-8 school – boundary takes in existing Brigadoon P.S. and J.W. Gerth P.S. students, and remains as senior (7-8) school for J.W. Gerth P.S. students
- Pioneer Park P.S. adds grades 7-8 to become a JK-8 school, acts as senior (7-8) school for Brigadoon P.S. students
- Minor boundary modifications (JK-6) for Brigadoon P.S. (add Area Q2), J.W. Gerth P.S. (add Area R2) and Pioneer Park P.S. (remove Areas Q2 and R2)
- French Immersion program offered at Brigadoon P.S. (1-6), J.W. Gerth P.S. (1-6 by 2016), the New South Kitchener school (1-8 by 2026 – Gr. 1 not starting until 2019) and Doon P.S. (1-6 by 2021 and 7-8 by 2014)

Scenario 12 v. Objectives

Objectives	Met?
• To establish a boundary for the new South Kitchener Groh Drive elementary school	<input checked="" type="checkbox"/>
• To increase the number of students housed in permanent accommodation in a cost-effective way	TBD
• To provide equitable learning opportunities for students and staff by moving towards the following criteria (<i>from Board Policy 3002</i>):	
• <i>JK-6 facilities between 350 and 400 students (approx. 2 classes/grade)</i>	<input checked="" type="checkbox"/>
• <i>JK-8 facilities between 500 and 650 students (approx. 2 classes/grade JK-6, 2+ classes/grade 7-8)</i>	<input checked="" type="checkbox"/>
• <i>Minimizing the potential for schools with enrolments over 650 students</i>	<input checked="" type="checkbox"/>
• To increase the number of students within walking distance to their assigned school (<1.6 km)	<input checked="" type="checkbox"/>
• To establish boundaries around "Development Areas" where proposed plans of subdivision are temporarily assigned to holding schools until a permanent accommodation solution can be determined	<input checked="" type="checkbox"/>
• To develop an interim (temporary) accommodation strategy, beginning in September 2014, to assist schools with increasing enrolment until such time as the new South Kitchener Groh Drive school is open	TBD

Meeting Dates

- **Public Meeting #2:** December 5, 7 PM @ Doon P.S.
- **Working Group #5:** TBD



Contact Information

- Website: www.wrdsb.ca
 - » About>Planning>Boundary Studies
 - » Doon South Boundary Study
- E-mail: boundaryfeedback@wrdsb.on.ca
- Phone: 519-570-0003 ext. 4419

