



Waterloo Region
District School Board

Doon South Boundary Study

Working Group Meeting #8

January 14, 2014



Agenda

1. Welcome
2. Draft Minutes Review/Approval
3. Public Meeting # 3
 - Feedback
4. Interim Option Discussion
 - Pros and Cons
5. Report and Recommendations
6. Roundtable

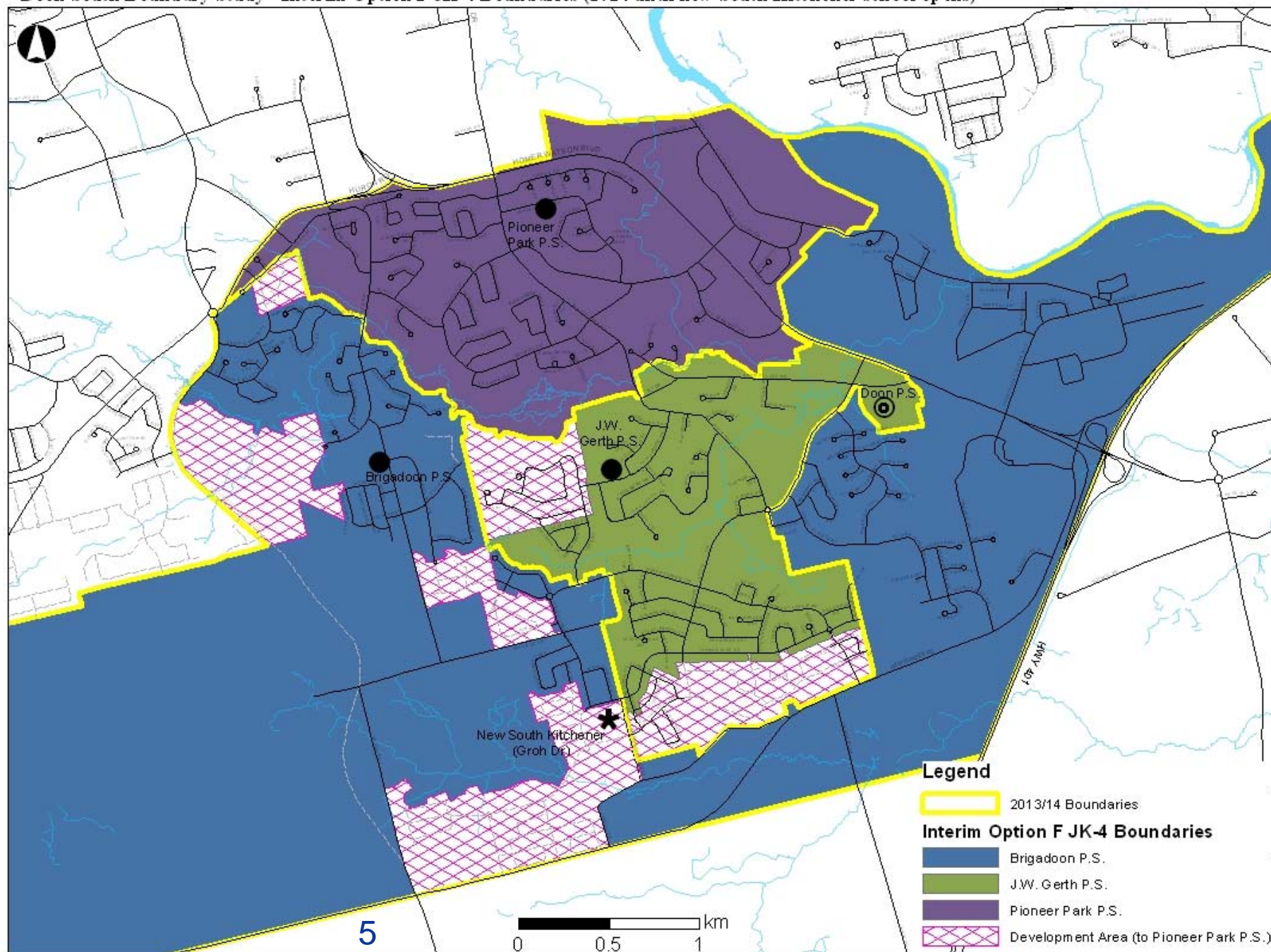
Interim Options Summary

	A	B	C	D	E	F	G	H	I	J
Gr. 4-6 in NSK boundary to Doon	X									
Gr. 5-6 in JWG boundary to Doon		X	X			X				
Gr. 5-6 BGD in NSK boundary to Doon			X							
Gr. 1-6 in NSK (JWG & BGD) to Doon				X						
Gr. 4-6 in JWG boundary to Doon					X					
Gr. 6 in BGD boundary to Doon					X					
Development Areas to PIO						X		X		
Gr. 5-6 in JWG boundary to PIO							X			
Development Areas TBD							X		X	X
Gr. 6 in JWG boundary to Doon								X		
JK-6 in NSK boundary (JWG) to PIO									X	
Gr. 1-6 in NSK (JWG) to PIO										X

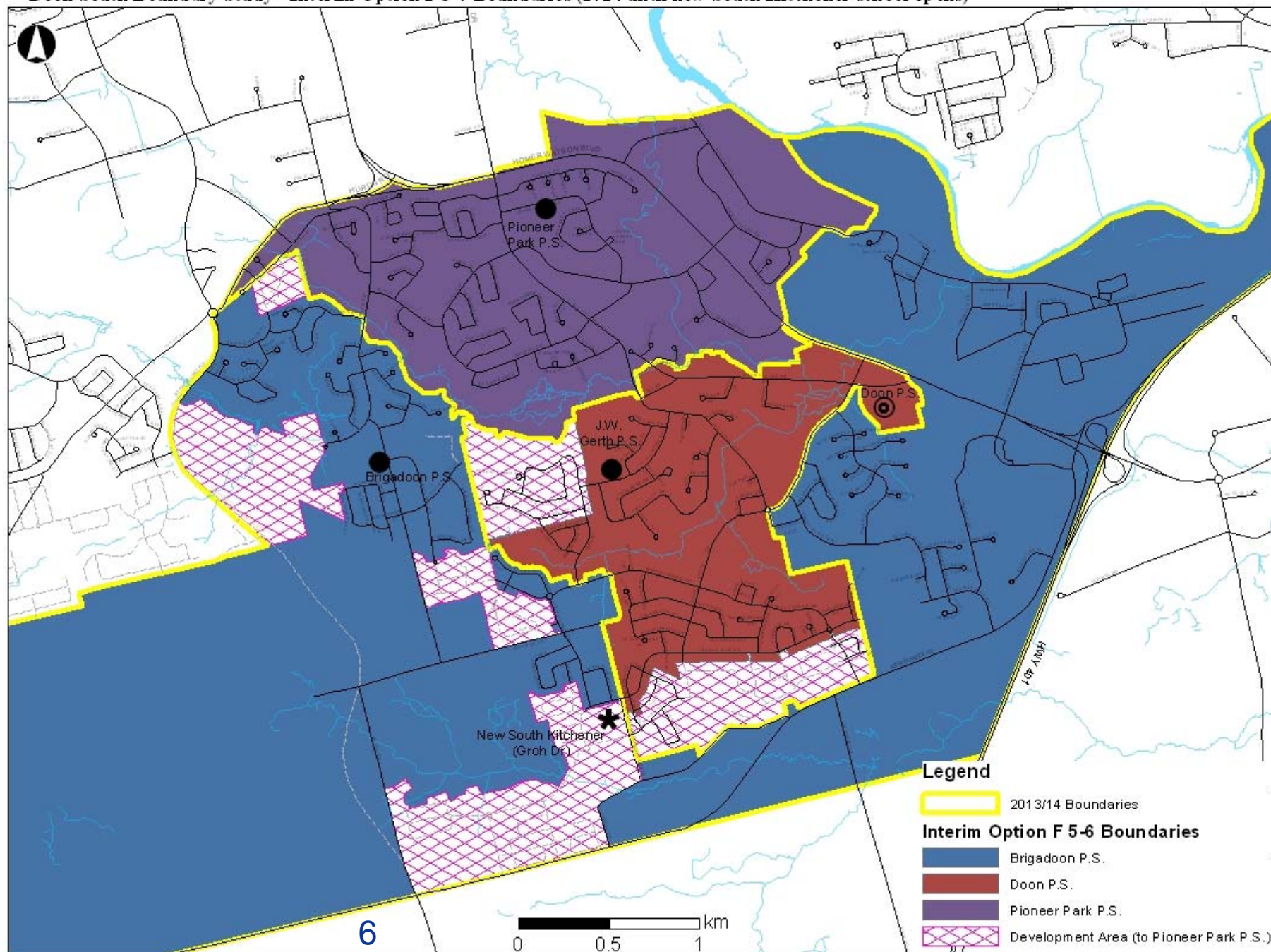
Interim Option F

- J.W. Gerth PS offers JK-4 only
- All Gr. 5-6 students in J.W. Gerth PS boundary assigned to Doon PS
- Interim Development Areas established and JK-6 students assigned to Pioneer Park PS

Doon South Boundary Study - Interim Option F JK-4 Boundaries (2014 until new South Kitchener school opens)



Doon South Boundary Study - Interim Option F 5-6 Boundaries (2014 until new South Kitchener school opens)



Interim Option F

Interim Option F
Scenario 16

Based on Sept. 2016 New School opening date

School	2014			2015			2016			2017		
	Grades	Enrolment	Portables	Grades	Enrolment	Portables	Grades	Enrolment	Portables	Grades	Enrolment	Portables
Brigadoon P.S.	JK-6	555	6	JK-6	595	8	JK-6	495	3	JK-6	495	3
Doon P.S.	5-8	510	8	5-8	580	11	6-8	465	6	7-8	380	2
J.W. Gerth P.S.	JK-4	640	5	JK-4	625	4	JK-5	520	0	JK-6	585	2
Pioneer Park P.S.	JK-6	440	6	JK-6	530	10	JK-6	375	3	JK-6	370	3
New School	N/A	0		N/A	0		JK-7	595	0	JK-8	715	5
Development Areas		0			0			30			70	
Total		2140	24		2330	32		2480	12		2620	15

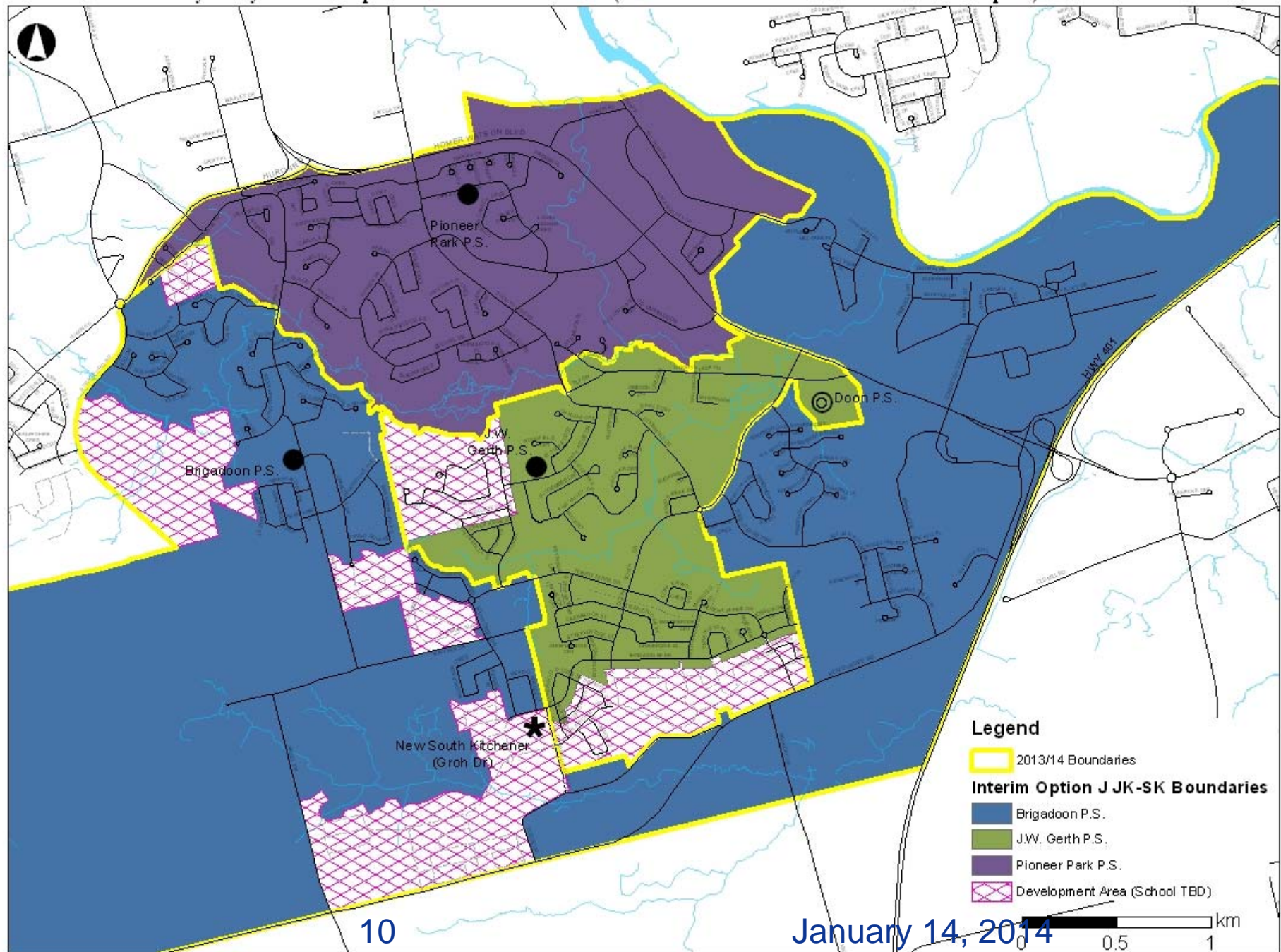
Option F Pros/Cons

Pros	Cons
<ul style="list-style-type: none"> No additional transitions for majority of students 	<ul style="list-style-type: none"> No Gr. 5-6 students at J.W. Gerth PS to provide leadership – Gr. 3-4s will have to “fill the void” temporarily
<ul style="list-style-type: none"> Two additional years at Doon PS = learning benefit 	<ul style="list-style-type: none"> YDP not guaranteed – some families may lose current child care arrangements
<ul style="list-style-type: none"> Development area assigned to Pioneer Park PS timing is unknown, therefore growth could be slow – school not certain to fill up 	<ul style="list-style-type: none"> Development areas are scattered, therefore bus runs will not be efficient
<ul style="list-style-type: none"> Bus runs to Doon PS (where required) are short; therefore buses could be used multiple times = minimal additional cost 	<ul style="list-style-type: none"> Doon PS will require some minor retrofits (e.g., coat hooks/lockers) to accommodate increased number of students
<ul style="list-style-type: none"> Doon PS site can accommodate division of play spaces for different age groups (upper and lower fields) 	<ul style="list-style-type: none"> Increases Doon PS to 154-175% occupancy and Pioneer Park PS to 124-150% occupancy
<ul style="list-style-type: none"> Reduces enrolment at J.W. Gerth PS enough to last until new school opens (120% occupancy) 	<ul style="list-style-type: none"> Splits families (e.g. Gr. 4 and Gr. 5 at different schools)
<ul style="list-style-type: none"> Maintains min. 2 classes/grade for Gr. 5-6 at Doon PS 	<ul style="list-style-type: none"> Grade distribution at Doon PS favours the senior elementary (Gr. 7 and 8) students
<ul style="list-style-type: none"> Doesn't split up cohort (all Gr. 5-6s move together) 	

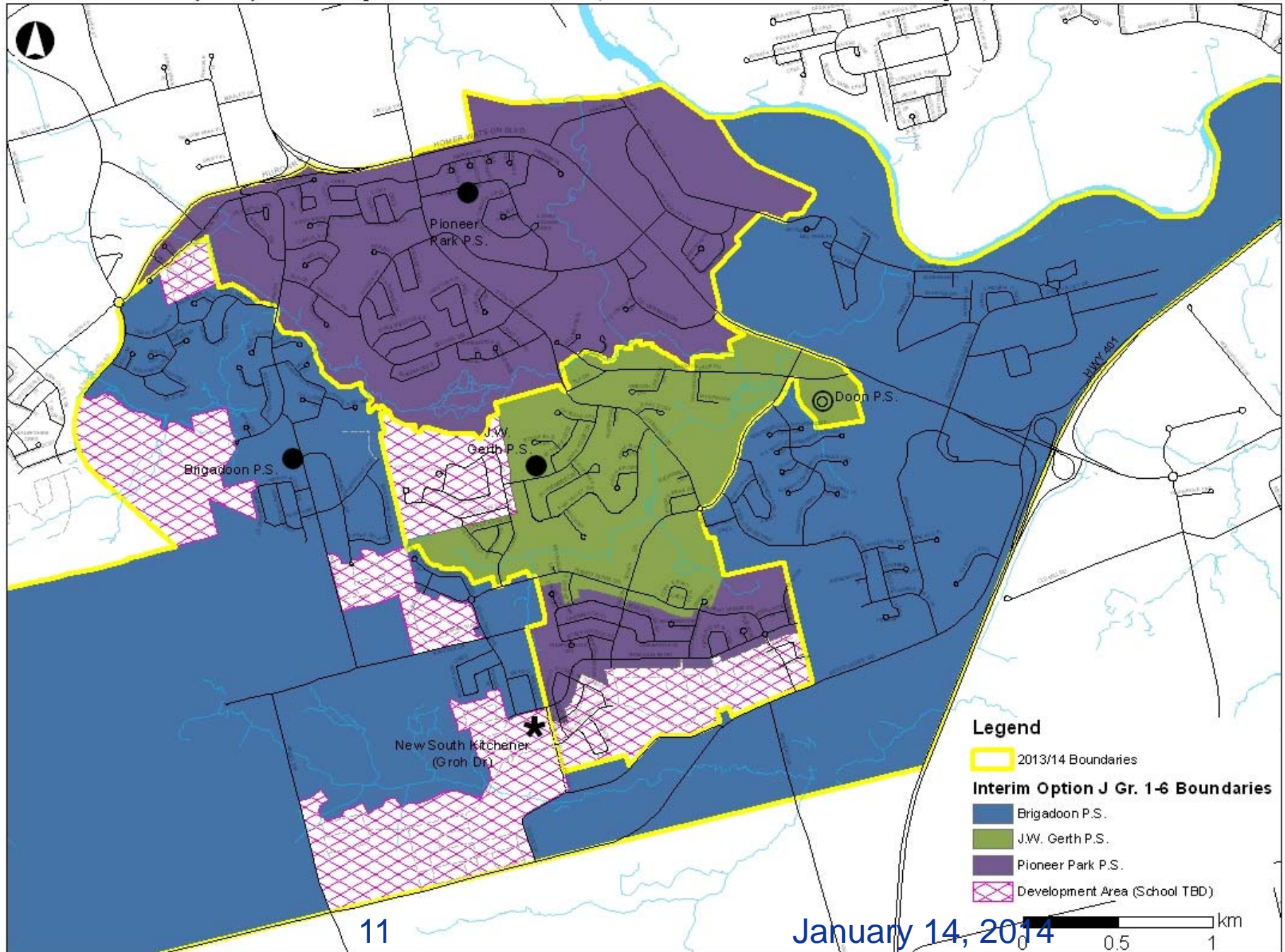
Interim Option J

- All regular track Gr. 1-6 students in the new South Kit. boundary (from J.W. Gerth PS only) attend Pioneer Park PS
- All FI Gr. 2-4 students and siblings students in the new South Kit. boundary (from J.W. Gerth PS only) remain at J.W. Gerth PS
- Interim Development Areas established and JK-8 students assigned to school outside of Doon South study area

Doon South Boundary Study - Interim Option J JK & SK Boundaries (2014 until the new South Kitchener school opens)



Doon South Boundary Study - Interim Option J Gr. 1-6 Boundaries (2014 until new South Kitchener school opens)



Interim Option J

Scenario 16

Interim Option J

Based on Sept. 2016 New School opening date

School	2014			2015			2016			2017		
	Grades	Enrolment	Portables	Grades	Enrolment	Portables	Grades	Enrolment	Portables	Grades	Enrolment	Portables
Brigadoon P.S.	JK-6	555	6	JK-6	595	8	JK-6	495	4	JK-6	495	4
Doon P.S.	7-8	380	2	7-8	415	4	7-8	385	2	7-8	380	2
J.W. Gerth P.S.	JK-6	600	3	JK-6	620	4	JK-6	600	3	JK-6	585	3
Pioneer Park P.S.	JK-6	540	10	JK-6	540	10	JK-6	375	3	JK-6	370	3
New School	N/A	0		N/A	0		JK-7	595		JK-8	715	5
Development Areas		70			160			30			70	
Total		2140	22		2325	26		2480	12		2620	16

Option J Pros/Cons

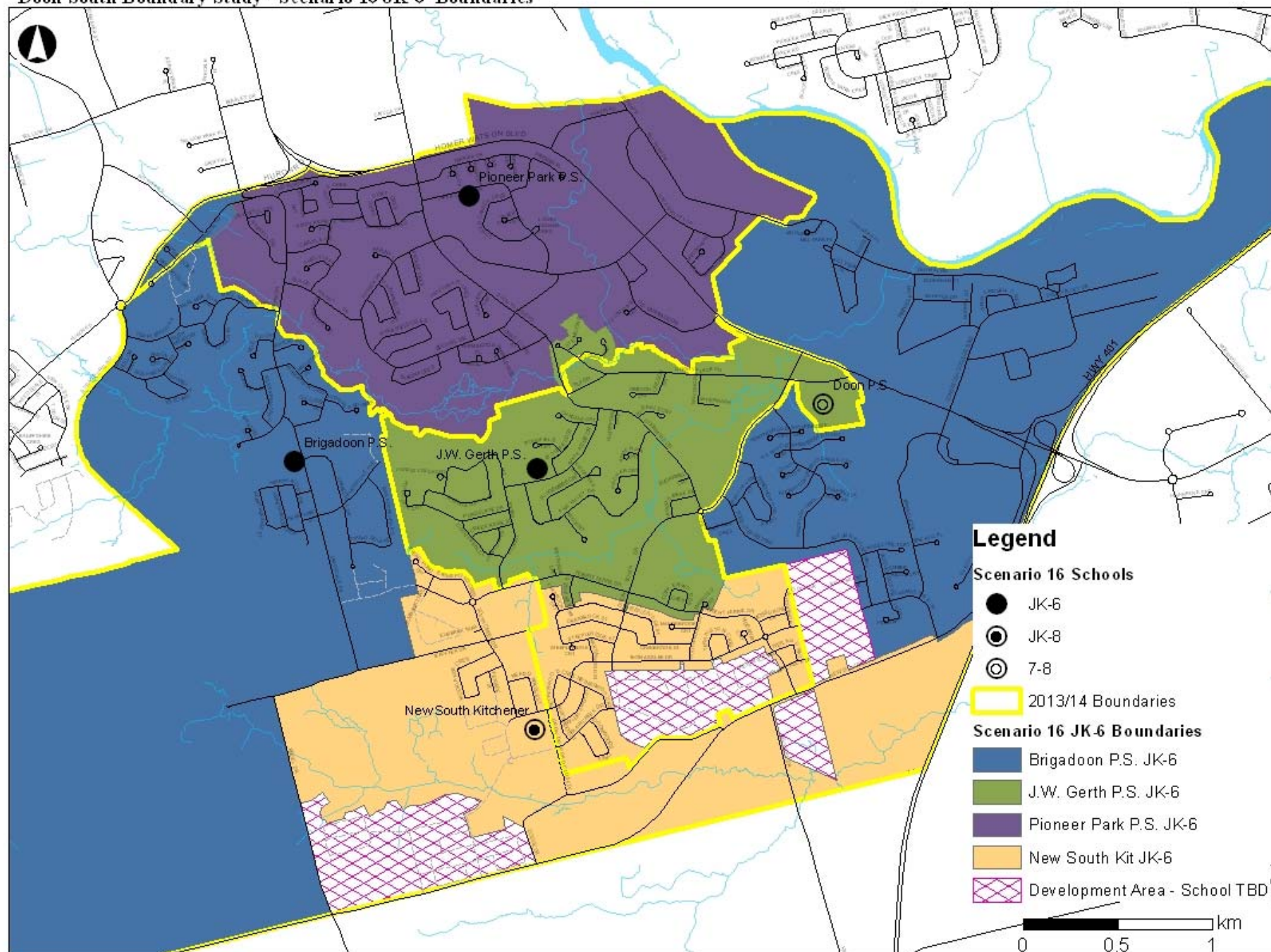
Pros	Cons
<ul style="list-style-type: none"> Gr. 1-6 Students who live closest to J.W. Gerth PS stay there 	<ul style="list-style-type: none"> Additional transitions for majority of students (J.W. Gerth PS to Pioneer PS to NSK)
<ul style="list-style-type: none"> Brigadoon PS, J.W. Gerth PS and Pioneer Park PS all remain JK-6 	<ul style="list-style-type: none"> Inequity between Regular Track and FI students/families (Reg. track have to leave J.W. Gerth PS and FI can stay)
<ul style="list-style-type: none"> Enrolment at Brigadoon PS, J.W. Gerth PS and Pioneer Park PS all at similar levels (over 500 students); thereby 'spreading the load' to all schools 	<ul style="list-style-type: none"> 2014 Gr. 1 students in NSK boundary would not be able to register for FI at a Doon South study area school for FI – potentially affecting future FI classes at the NSK school
<ul style="list-style-type: none"> Reduces enrolment at J.W. Gerth PS enough to last until new school opens (115% occupancy) 	<ul style="list-style-type: none"> Increases Pioneer Park PS to 175% occupancy = more pressure on smallest building in study area
<ul style="list-style-type: none"> Enrolment increase at Pioneer Park PS is definite and immediate – may make staffing and resource allocation process easier 	<ul style="list-style-type: none"> Bus runs to Pioneer Park PS are long; therefore buses may not be able to be used multiple times = additional cost
	<ul style="list-style-type: none"> Splits families with young children (e.g. SK and Gr. 1 at different schools)
	<ul style="list-style-type: none"> Development areas are scattered, and will be bused out of the Doon South study area therefore bus runs will not be efficient
	<ul style="list-style-type: none"> School for development areas TBD; therefore students may be split between multiple 'holding' schools

Scenario 16

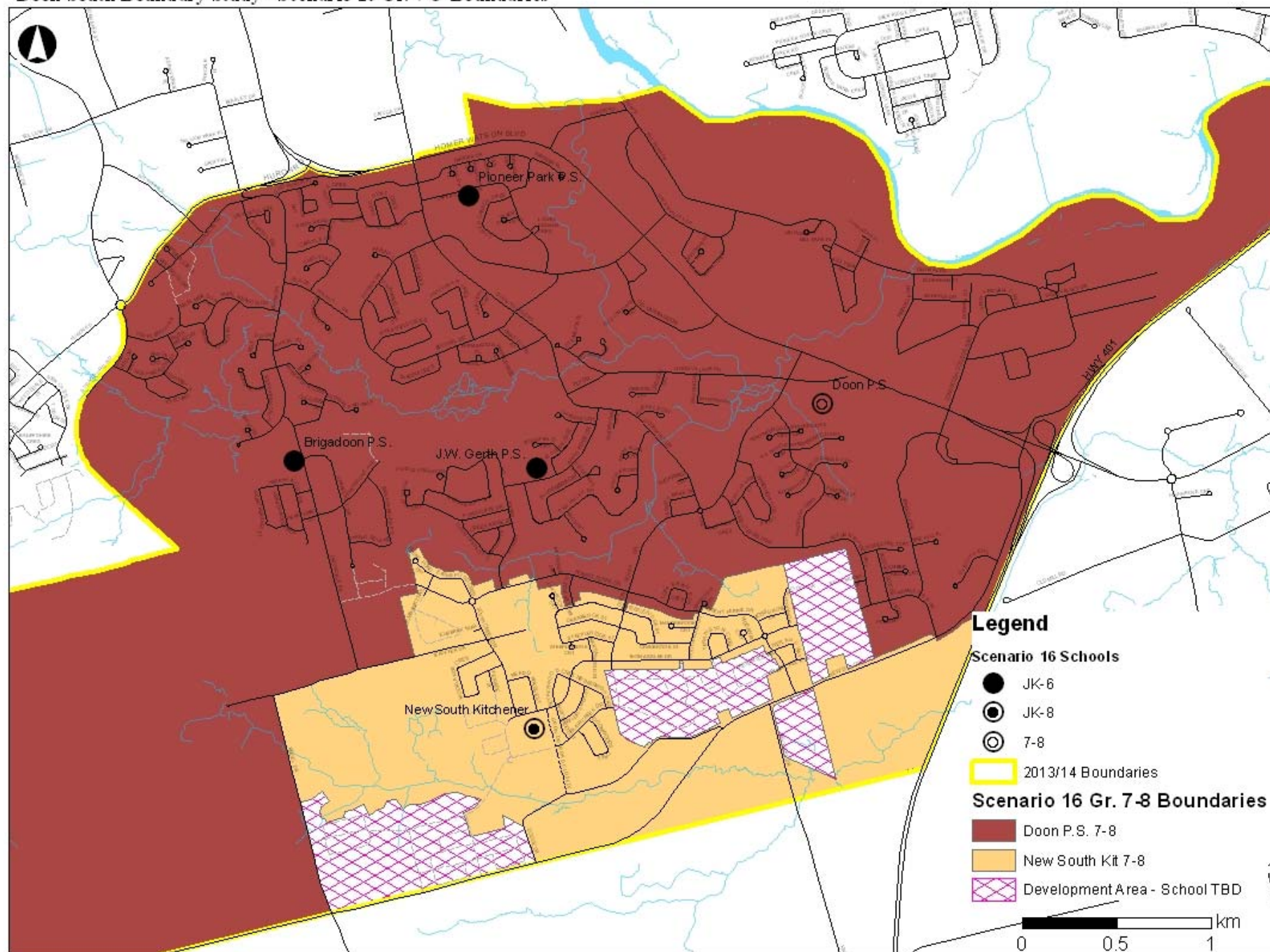
- New South Kit. school = JK-8
- Doon PS remains Gr. 7-8 school for Brigadoon, J.W. Gerth and Pioneer Park PS students
- Boundary modifications for all schools
- FI offered at Brigadoon PS, J.W. Gerth PS and the New South Kit. School
- Development Areas established – school TBD



Doon South Boundary Study - Scenario 16 JK-6 Boundaries



Doon South Boundary Study - Scenario 16 Gr. 7-8 Boundaries



Scenario 16

School	2016/17 Capacity	New Capacity (requires approval)	Total Capacity Required	Grades	Year						
					2018	2019	2020	2021	2022	2023	2024
Brigadoon P.S.	421	46	467	JK-6	505	520	530	525	510	495	485
Doon P.S.	331	115	446	7-8	420	430	435	435	455	455	455
J.W. Gerth P.S.	536		536	JK-6	565	555	550	540	535	525	520
Pioneer Park P.S.	308	46	354	JK-6	375	375	370	365	365	360	360
New School	600	138	738	JK-8	775	780	785	770	750	735	715
Development Areas					135	200	295	410	510	570	600
Total	2196		2541		2775	2860	2965	3050	3125	3140	3135

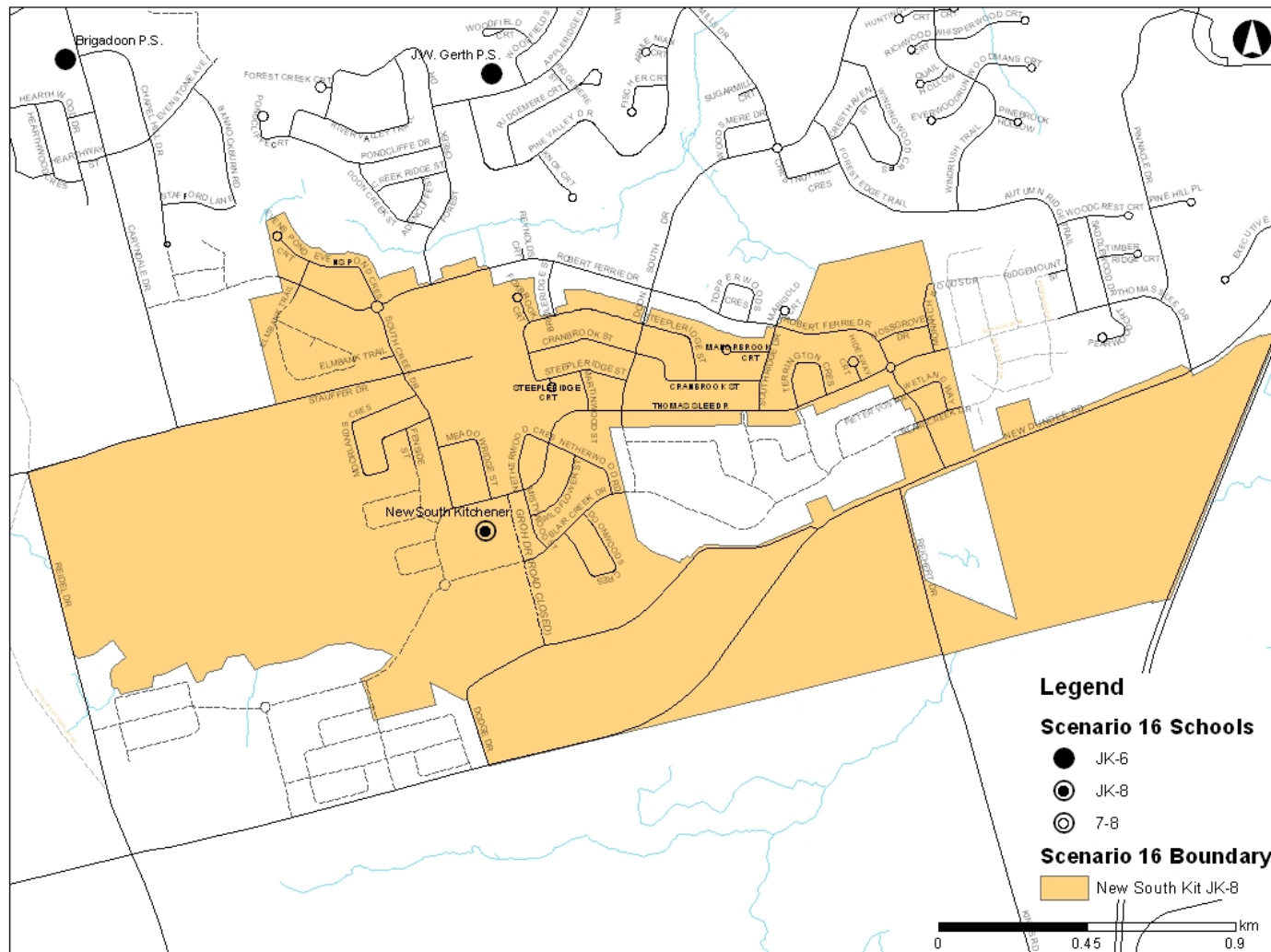


Draft Recommendations (to implement Scenario 16)

1. *Establish a boundary for new South Kitchener (Groh Drive) school*
2. *Realign Brigadoon Public School's Boundary*
3. *Realign J.W. Gerth Public School's Boundary*
4. *Realign Doon Public School's Boundary*
5. *Realign Pioneer Park Public School's Boundary*
6. *Establish Development Areas*



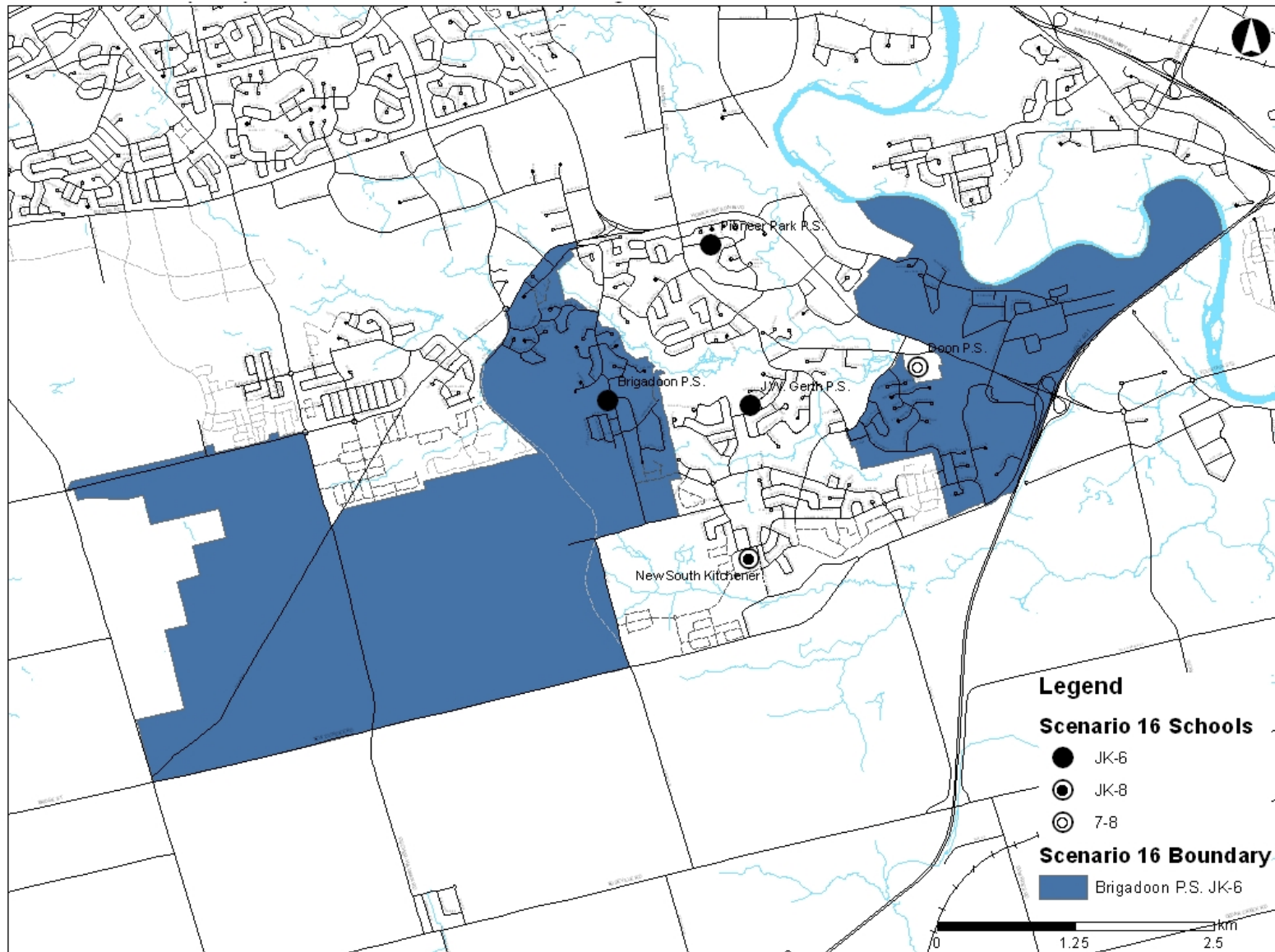
New South Kitchener (Groh Drive) School Boundary (Sc. 16)



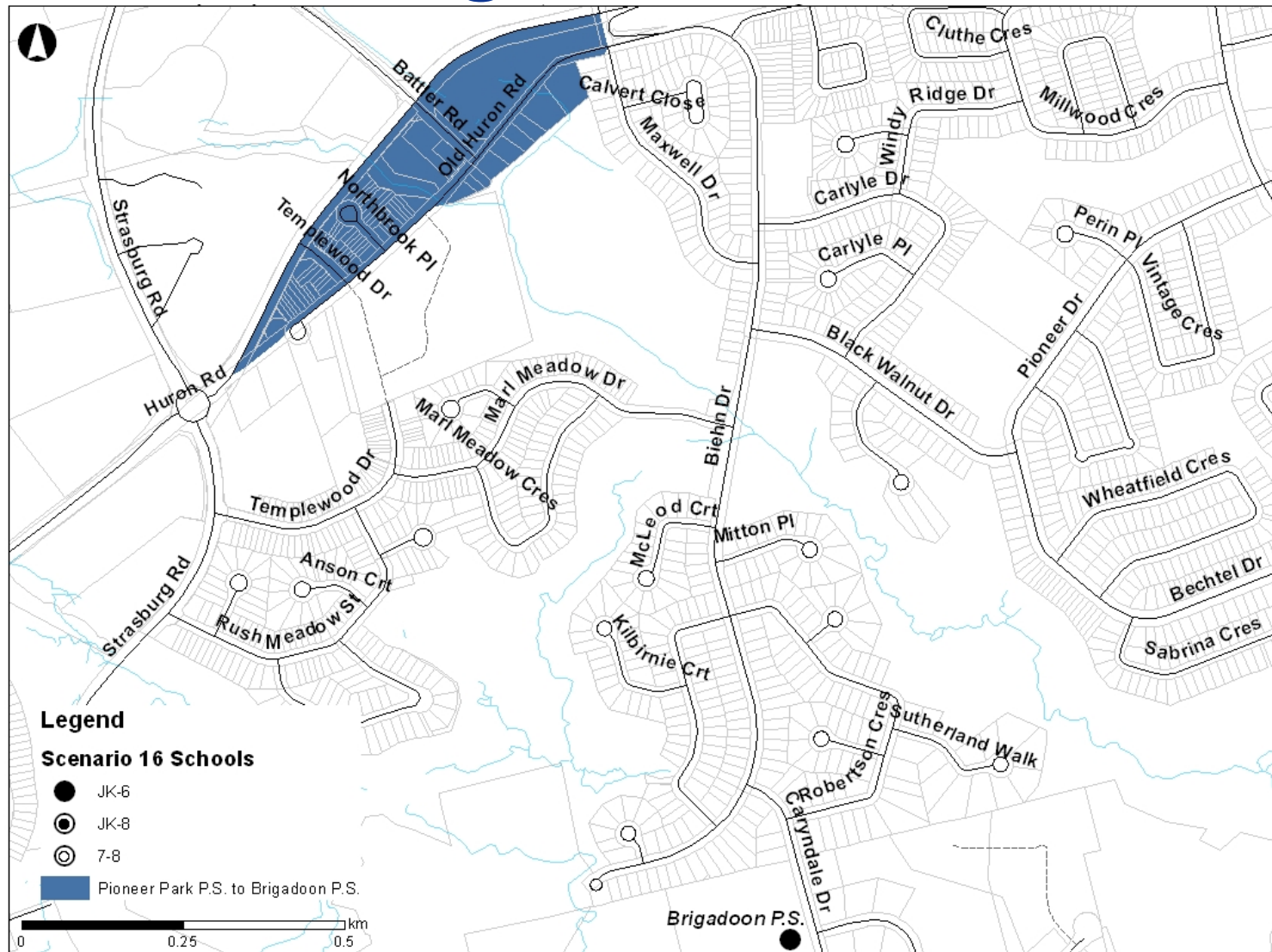
#1: Establish a boundary for new South Kitchener (Groh Drive) school

- Approval of the boundary for the new South Kitchener school for Junior Kindergarten to Grade 8 students, effective the year the new school opens; and
- Grandfathering of Grade 6 and 8 students in the new school boundary at Doon Public School the year the new school opens (with transportation for one year only to those who qualify); and
- French Immersion classes at the new school with the possibility of offering Grades 1-6 by the 2018/19 academic year, to be evaluated by staff to determine viability; and
 - Grandfathering for FI students who must attend a school out of boundary because that grade level is not offered, these students and their siblings have the option to stay at their existing site to be enrolled in the French Immersion program; however, they may not be eligible for transportation; and
- An additional 6 classrooms to be considered as part of the construction of the new school, increasing the built capacity of the new school to approximately 738 pupil places. This would be subject to the Board's capital needs priority setting for funding opportunities from the Ministry of Education

Brigadoon P.S. Boundary (Sc. 16)



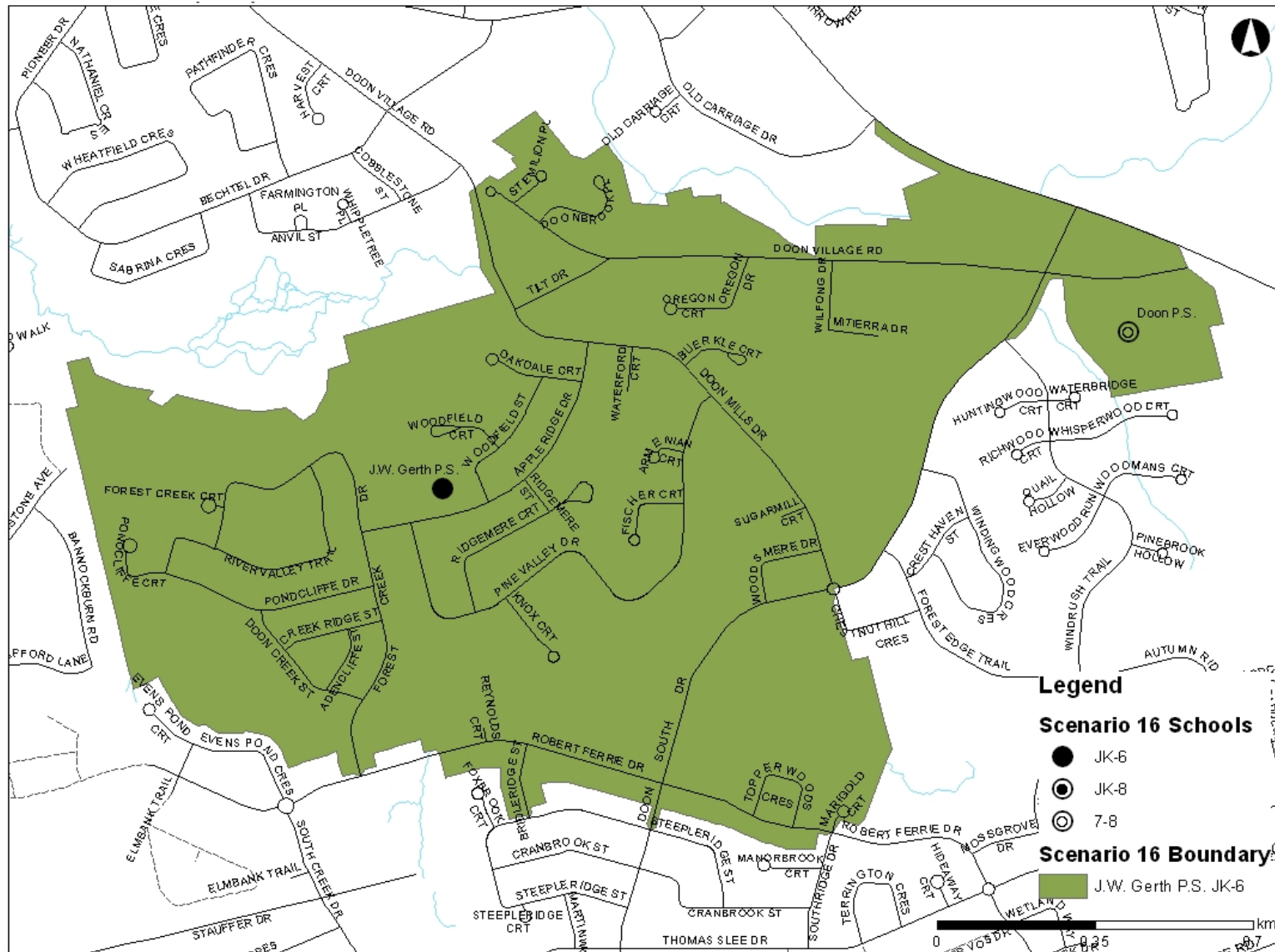
Affected Area – Pioneer Park P.S. to Brigadoon P.S.



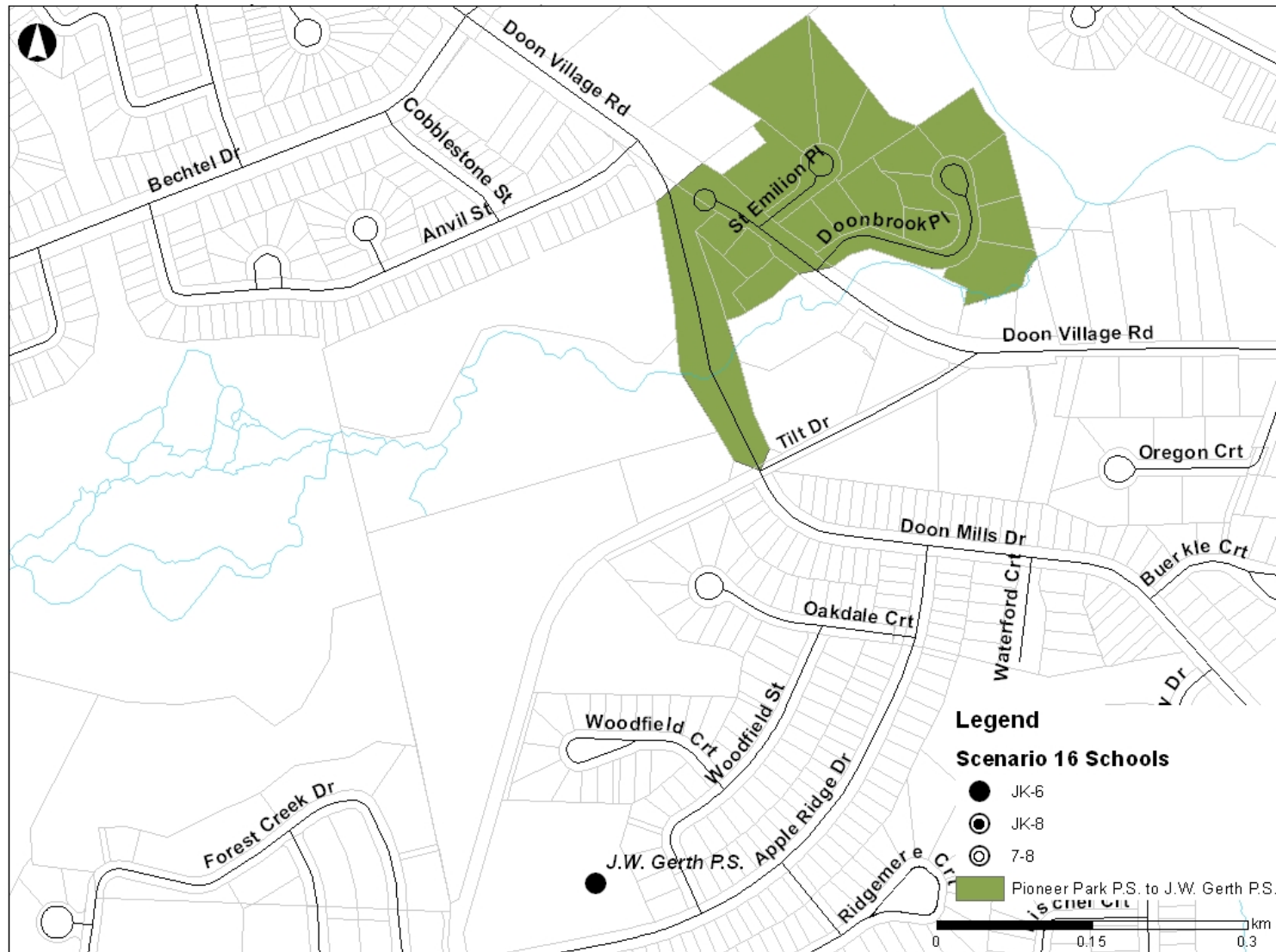
#2: Realign Brigadoon Public School's Boundary

- Approval of the boundary change between Pioneer Park and Brigadoon Public Schools, effective the year the new South Kitchener (Groh Drive) school opens (tentatively September 2016); and
- Grandfathering of Grade 6 students (not including younger siblings) in the affected area moving from Pioneer Park to Brigadoon Public School have the option to remain at Pioneer Park Public School the year of the change 9 (with Transportation if they qualify); and
- An additional 2 classrooms (46 pupil places, estimated benchmark cost of \$880K) to be constructed at Brigadoon Public School, increasing the built capacity to approximately 467 pupil places. This would be subject to the Board's capital needs priority setting for funding opportunities from the Ministry of Education

J.W. Gerth Boundary (Sc. 16)



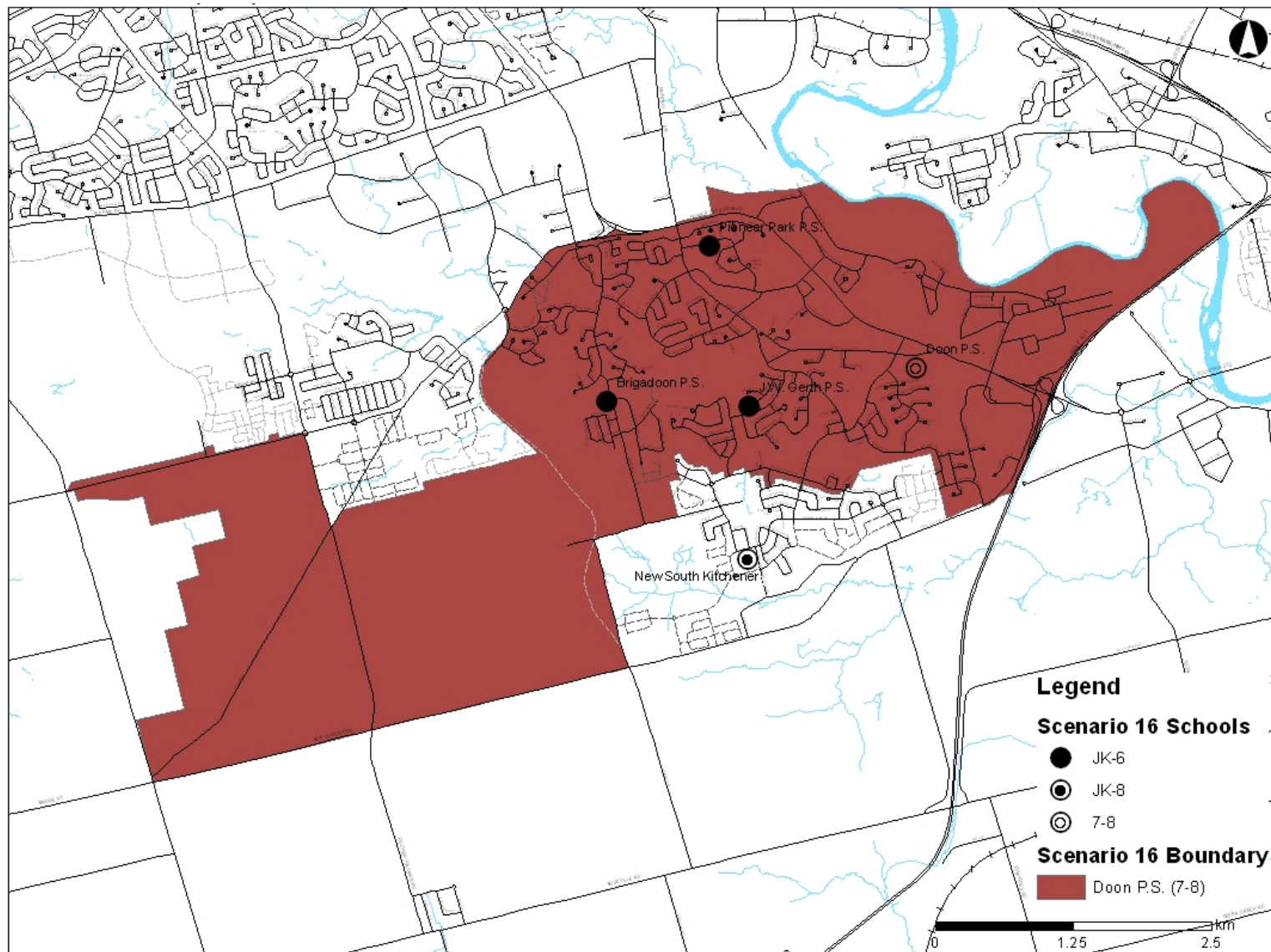
Affected Area – Pioneer Park P.S. to J.W. Gerth P.S.



#3: Realign J.W. Gerth Public School's Boundary

- Approval of the boundary change between Pioneer Park and J.W. Gerth Public Schools, effective the year the new South Kitchener (Groh Drive) school opens (tentatively September 2016); and
- Grandfathering of Grade 6 students (not including younger siblings) in the affected area moving from Pioneer Park to J.W. Gerth Public School have the option to remain at Pioneer Park Public School the year of the change (including transportation for those who qualify).

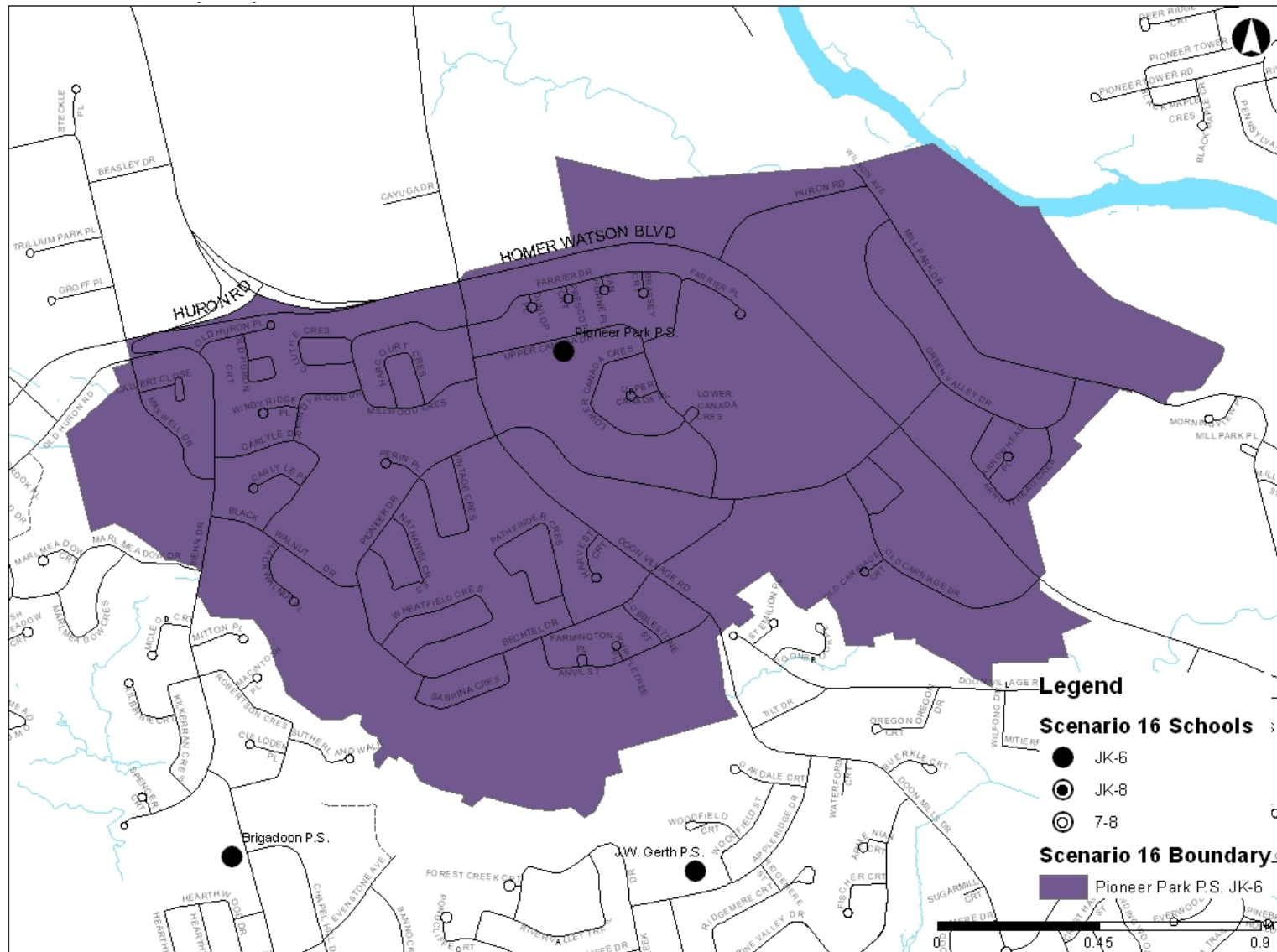
Doon P.S. Boundary (Sc. 16)



#4: *Realign Doon Public School's Boundary*

- Approval of the new boundary for Doon Public School, effective the year the new South Kitchener (Groh Drive) school opens (tentatively September 2016); and
- A 5 classroom (115 pupil places, estimated benchmark cost of \$2.2M) addition to be constructed at Doon Public School, increasing the built capacity to approximately 446 pupil places. This would be subject to the Board's capital needs priority setting for funding opportunities from the Ministry of Education.

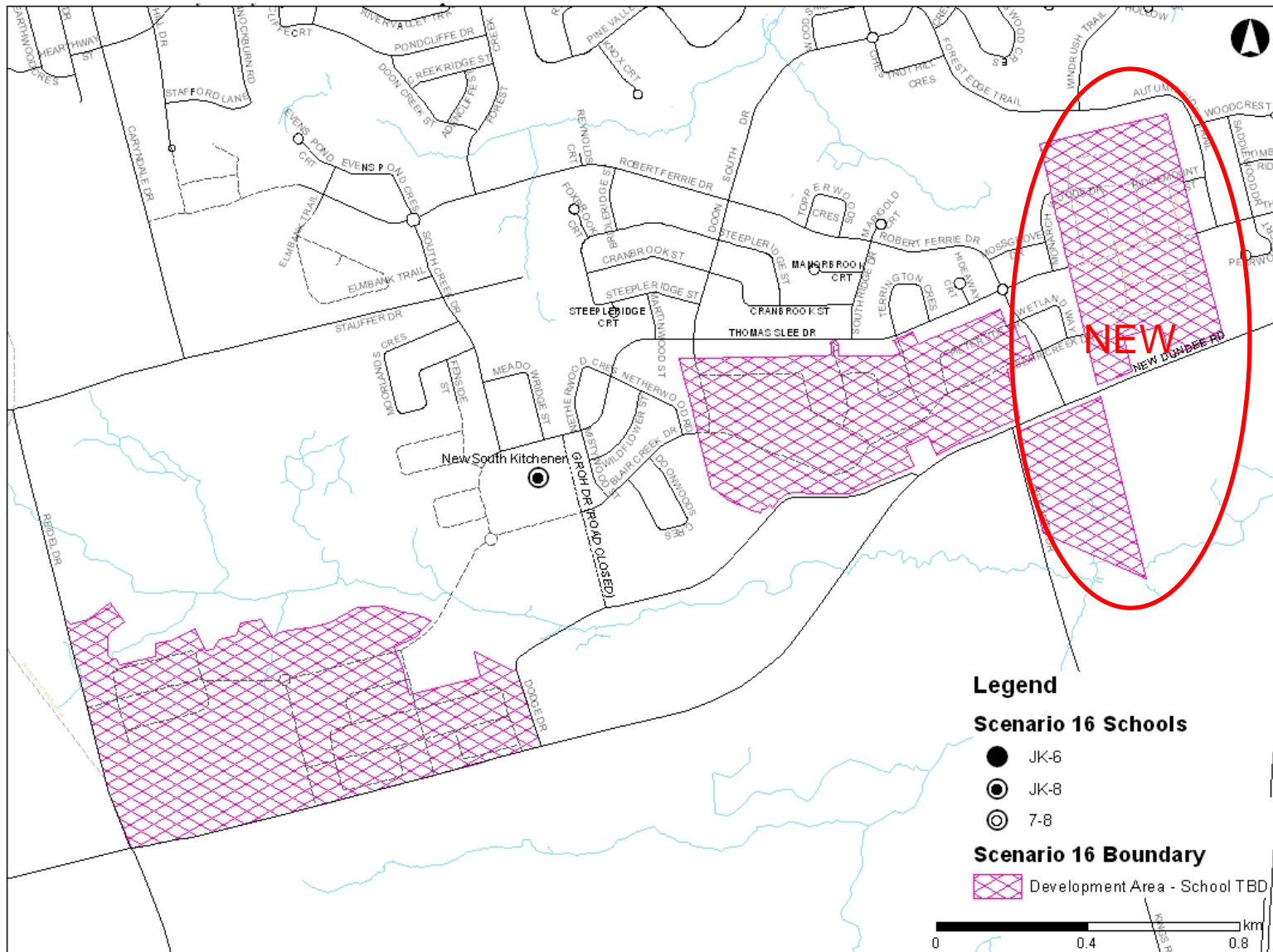
Pioneer Park P.S. Boundary (Sc. 16)



#5: Realign Pioneer Park Public School's Boundary

- Approval of the new boundary for Pioneer Park Public School, effective the year the new South Kitchener (Groh Drive) school opens (tentatively September 2016); and
- A 2 classrooms addition (46 pupil places, estimated benchmark cost of \$950K) addition to be constructed at Pioneer Park Public School, increasing the built capacity to approximately 354 pupil places. This would be subject to the Board's capital needs priority setting for funding opportunities from the Ministry of Education.

Development Areas (Sc. 16)



#6: *Establish Development Areas*

- Approval of the interim Development Areas for the Doon South community, effective the year the new South Kitchener (Groh Drive) school opens (tentatively September 2016).

Key Dates

- **Friday January 17, 2014** – report and recommendations publicized on Board's website
- **Monday January 20, 2014** – report and recommendations presented to trustees at Committee of the Whole meeting (Public Meeting – all are welcome to attend)



Key Dates

- **Monday January 27, 2014** – Board Meeting - Minutes of Jan. 20/14 Committee of the Whole meeting approved (any decision made on Jan. 20/14 is finalized)

