

**Doon South**

**Boundary Study**

**Working Group Meeting #6**

December 10, 2013

Brigadoon P.S.

4:30 – 6:00 pm



Waterloo Region  
District School Board

# Agenda

1. Welcome
2. Draft Minutes Review/Approval
3. Business Arising from Minutes
  - a) Feedback from Westheights PS
  - b) Pioneer Park PS washrooms
4. Public Meeting #2
  - a) Review Feedback
  - b) Other options?
5. Roundtable

## Comments from Westheights P.S. Re: 7-8 school of 550 students

1. What **challenges**, if any, have you encountered with the current population (550 students) of Westheights P.S. that may not be present with a smaller population (400-450)?
2. What **advantages**, if any, do you have with the current population (550 students) of Westheights P.S. that may not be present with a smaller population (400-450)?
3. What advice would you offer the Doon South Boundary Study Working Group? Would you suggest we continue to explore a scenario that has Doon P.S. reaching 550 students, or try to avoid it?



# Comments from Westheights P.S. Re: 7-8 school of 550 students

## 1. Challenges identified:

- Facility not built to accommodate 550 students
  - Limited gym space (this year have to have 3 sections of gym running in the same period; therefore one class is always outside)
  - Some subjects (art & music) require purpose-built rooms and due to scheduling of these rooms some subjects have to be offered on a semester basis, or in alternative rooms
  - Portables require additional time for rotary (takes longer for students to get from class to class during periods)



# Comments from Westheights P.S. Re: 7-8 school of 550 students

## 2. Advantages identified:

- More staff adds more diverse skills that can be offered to support a wider variety of clubs and teams
- Easier to separate students when required because there are more classes
- Easier to schedule/time table teacher assignments (e.g., a teacher can be assigned multiple sections of Gr. 8 Geography)
- Fundraising is good and well supported



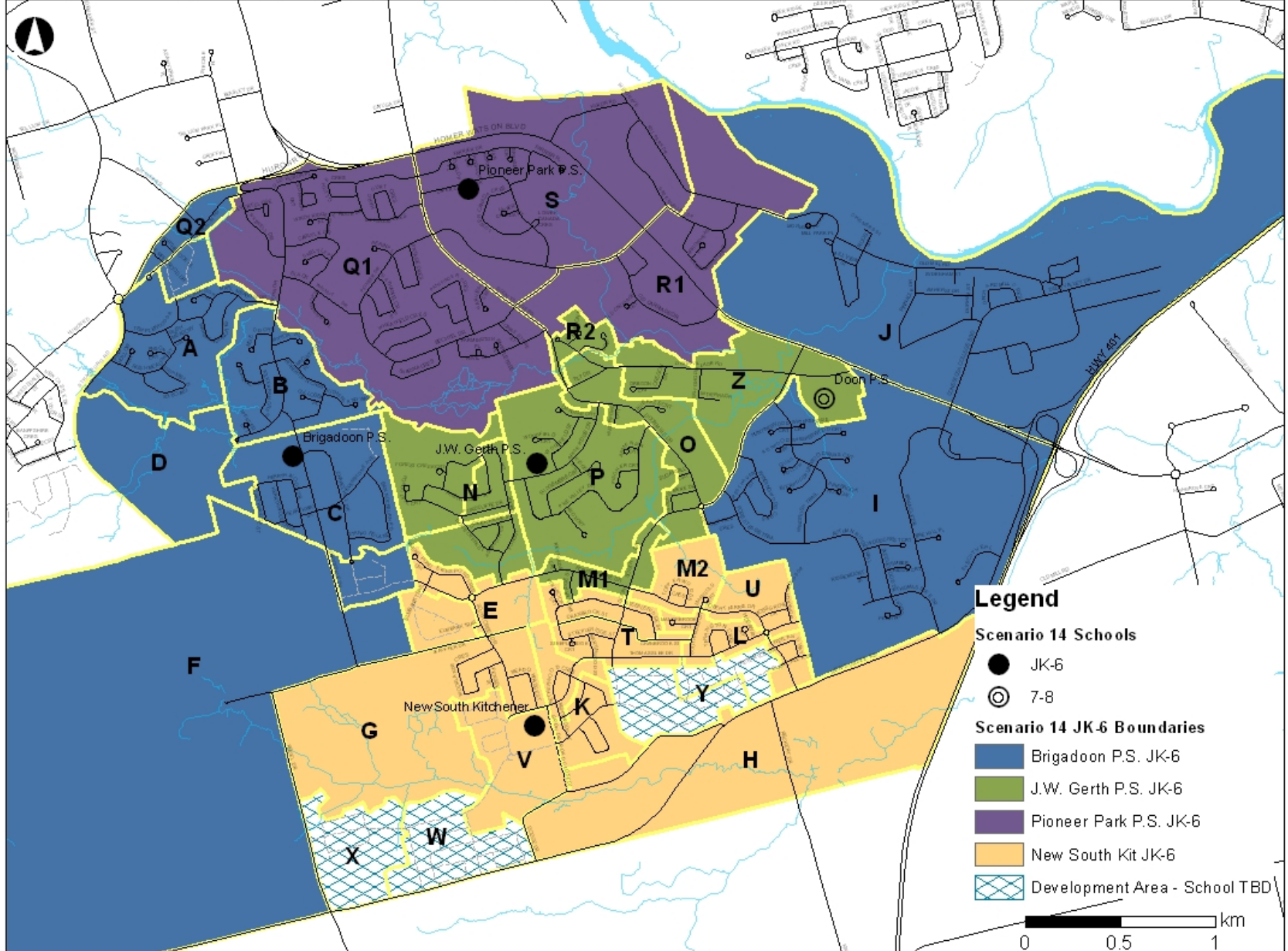
# Comments from Westheights P.S. Re: 7-8 school of 550 students

## 3. Advice/Other:

- Have had very few behaviour issues
- 550 students seems to be more advantageous as long as the facility can accommodate the students
- If the school has portables, make sure to incorporate enough transition time during periods so that students can get to class on time

# Scenario 14 – JK-6 Boundaries

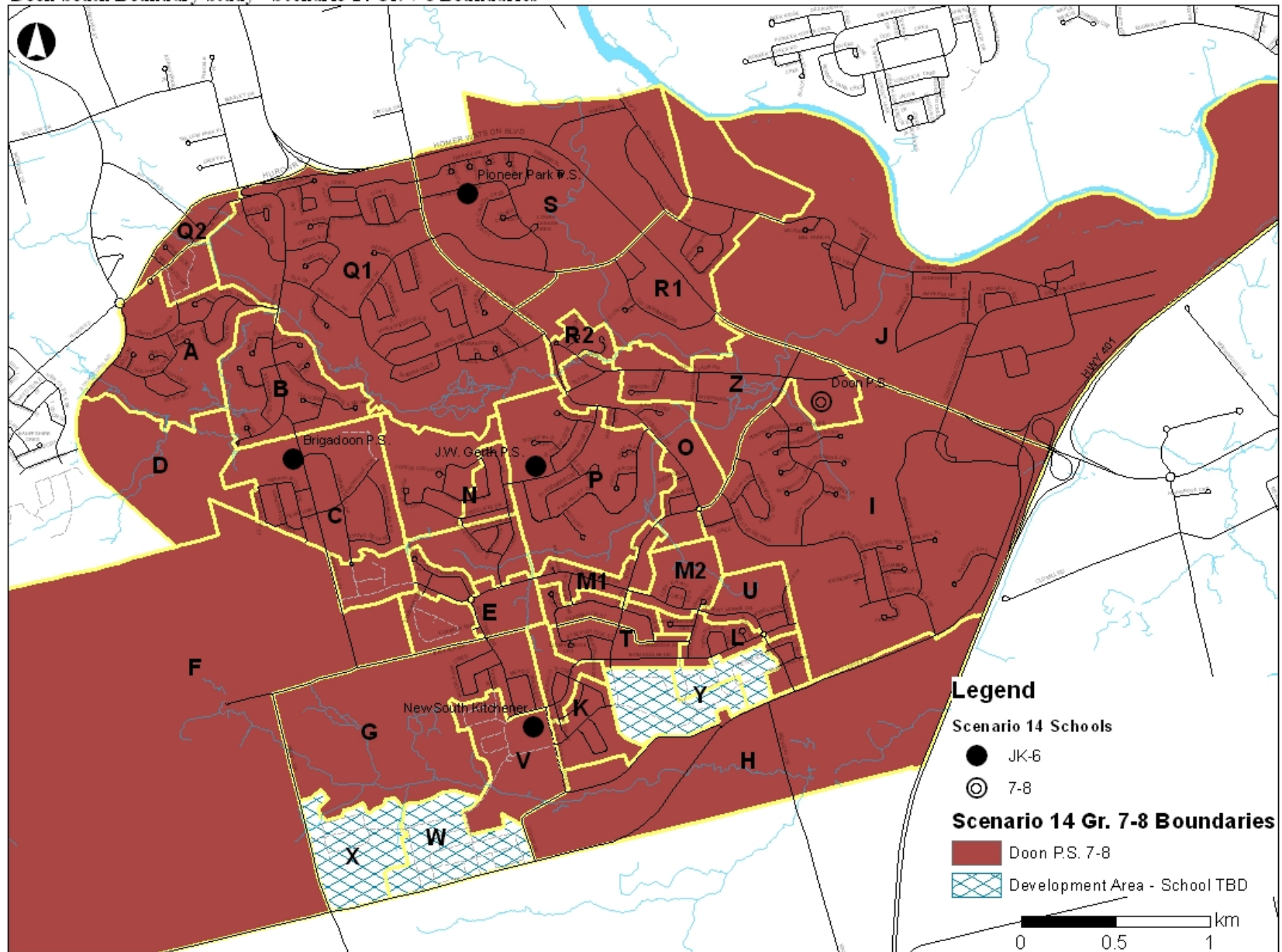
Doon South Boundary Study - Scenario 14 JK-6 Boundaries





# Scenario 14 – 7-8 Boundaries

Doon South Boundary Study - Scenario 14 Gr. 7-8 Boundaries





# Scenario 14 – Projections

		Scenario 14																				
School	Scenario 14 Grades	2016-2017							2018-2019							2020-2021						
		JK-6	1-6 FI	7-8	7-8 FI	Total	OTG	Temp. Capacity	JK-6	1-6 FI	7-8	7-8 FI	Total	OTG	Temp. Capacity	JK-6	1-6 FI	7-8	7-8 FI	Total	OTG	Temp. Capacity
Brigadoon P.S.	JK-6	300	210			510	421	4	305	200			505	421	4	340	190			530	421	5
Doon P.S.	7-8	95	20	355	70	540	331	9			380	135	515	331	8			385	160	545	331	9
J.W. Gerth P.S.	JK-6	325	150			475	536		360	150			510	536		350	140			490	536	
Pioneer Park P.S.	JK-6	375				375	308	3	375				375	308	3	370				370	308	3
New School	JK-6	450	105			555	600		565	165			730	600	6	540	190			730	600	6
Development Areas		30		0		30			120		15		135			265		25		290		
Total		1575	485	355	70	2485	2196	16	1725	515	395	135	2770	2196	21	1865	520	410	160	2955	2196	23

Scenario 14

School	2013/14 Capacity	2016/17 Capacity	New Capacity (requires approval)	Total Capacity Required	Grades	Year								
						2016	2017	2018	2019	2020	2021	2022	2023	2024
Brigadoon P.S.	383	421	46	467	JK-6	505	495	505	520	530	525	510	495	485
Doon P.S.	331	331	230	561	7-8	540	470	515	535	540	545	560	560	555
J.W. Gerth P.S.	494	536		536	JK-6	475	530	510	500	495	485	485	480	475
Pioneer Park P.S.	290	308	46	354	JK-6	375	370	375	375	370	365	365	360	360
New School	0	600	46	646	JK-6	555	680	735	735	730	715	695	680	665
Development Areas				0		30	70	135	200	295	410	510	570	600
<b>Total</b>	<b>1498</b>	<b>2196</b>		<b>2564</b>		<b>2480</b>	<b>2620</b>	<b>2775</b>	<b>2860</b>	<b>2965</b>	<b>3050</b>	<b>3125</b>	<b>3145</b>	<b>3140</b>

## Scenario 14 Description:

- New South Kitchener school (JK-6) boundary takes in portions of the current Brigadoon P.S. and J.W. Gerth P.S. boundaries
- Doon P.S. remains as senior (7-8) school for all Doon South Area students
- Minor boundary modifications for Brigadoon P.S., J.W. Gerth P.S., and Pioneer Park P.S.
- French Immersion program offered at Brigadoon P.S. (1-6), J.W. Gerth P.S. (1-6 by 2016), the New South Kitchener school (1-4 in 2016 and 1-6 by 2018) and Doon P.S. (7-8 by 2014)
- Development Area boundaries established – future school to be determined

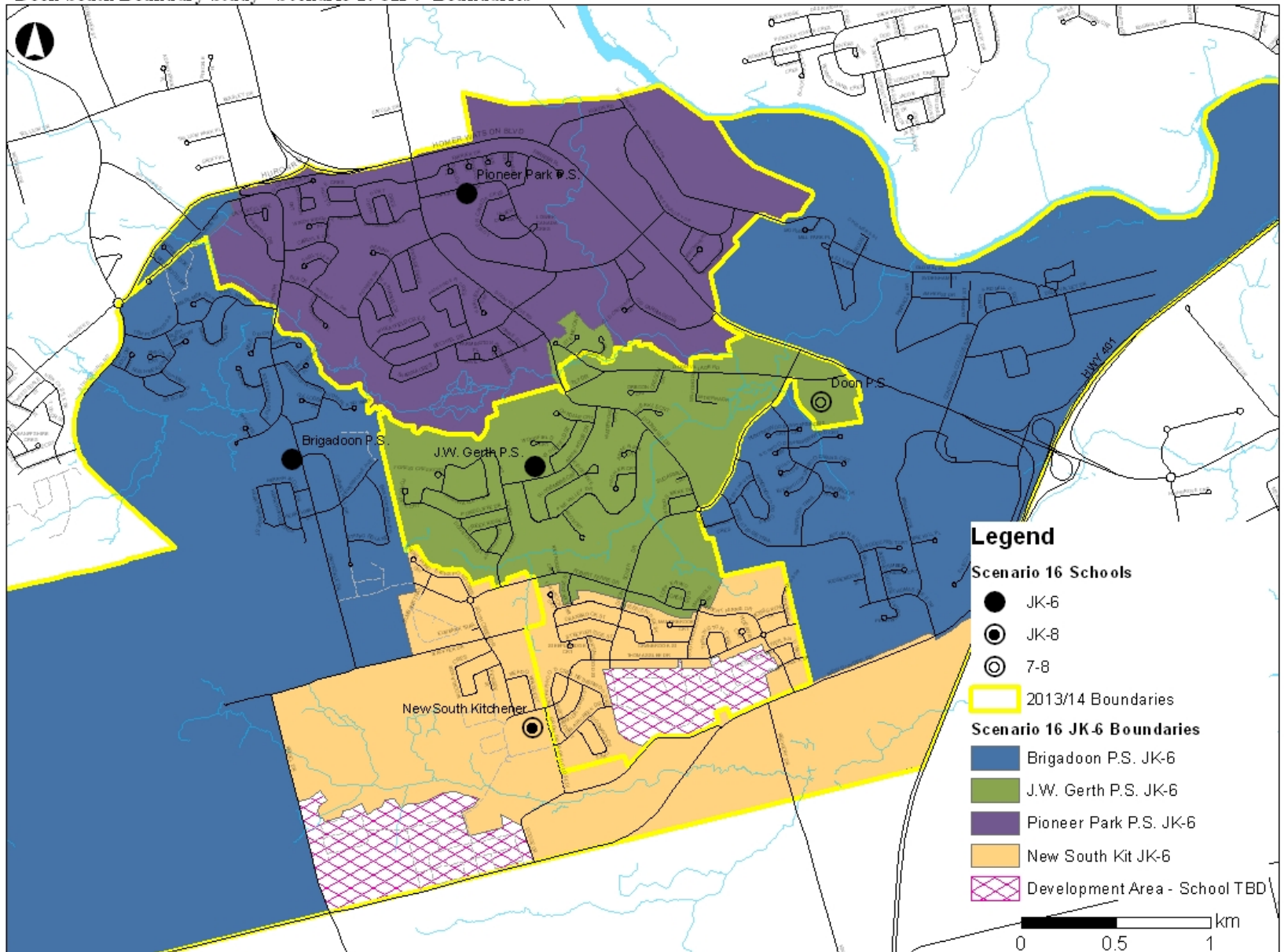
# Scenario 14 v. Objectives

Objectives	Met?
• To establish a boundary for the new South Kitchener Groh Drive elementary school	<input checked="" type="checkbox"/>
• To increase the number of students housed in permanent accommodation in a cost-effective way	<input checked="" type="checkbox"/>
• To provide equitable learning opportunities for students and staff by moving towards the following criteria ( <i>from Board Policy 3002</i> ):	
• <i>JK-6 facilities between 350 and 400 students (approx. 2 classes/grade)</i>	<input checked="" type="checkbox"/>
• <i>JK-8 facilities between 500 and 650 students (approx. 2 classes/grade JK-6, 2+ classes/grade 7-8)</i>	N/A
• <i>Minimizing the potential for schools with enrolments over 650 students</i>	<input checked="" type="checkbox"/>
• To increase the number of students within walking distance to their assigned school (<1.6 km)	<input checked="" type="checkbox"/>
• To establish boundaries around "Development Areas" where proposed plans of subdivision are temporarily assigned to holding schools until a permanent accommodation solution can be determined	<input checked="" type="checkbox"/>
• To develop an interim (temporary) accommodation strategy, beginning in September 2014, to assist schools with increasing enrolment until such time as the new South Kitchener Groh Drive school is open	<input checked="" type="checkbox"/>



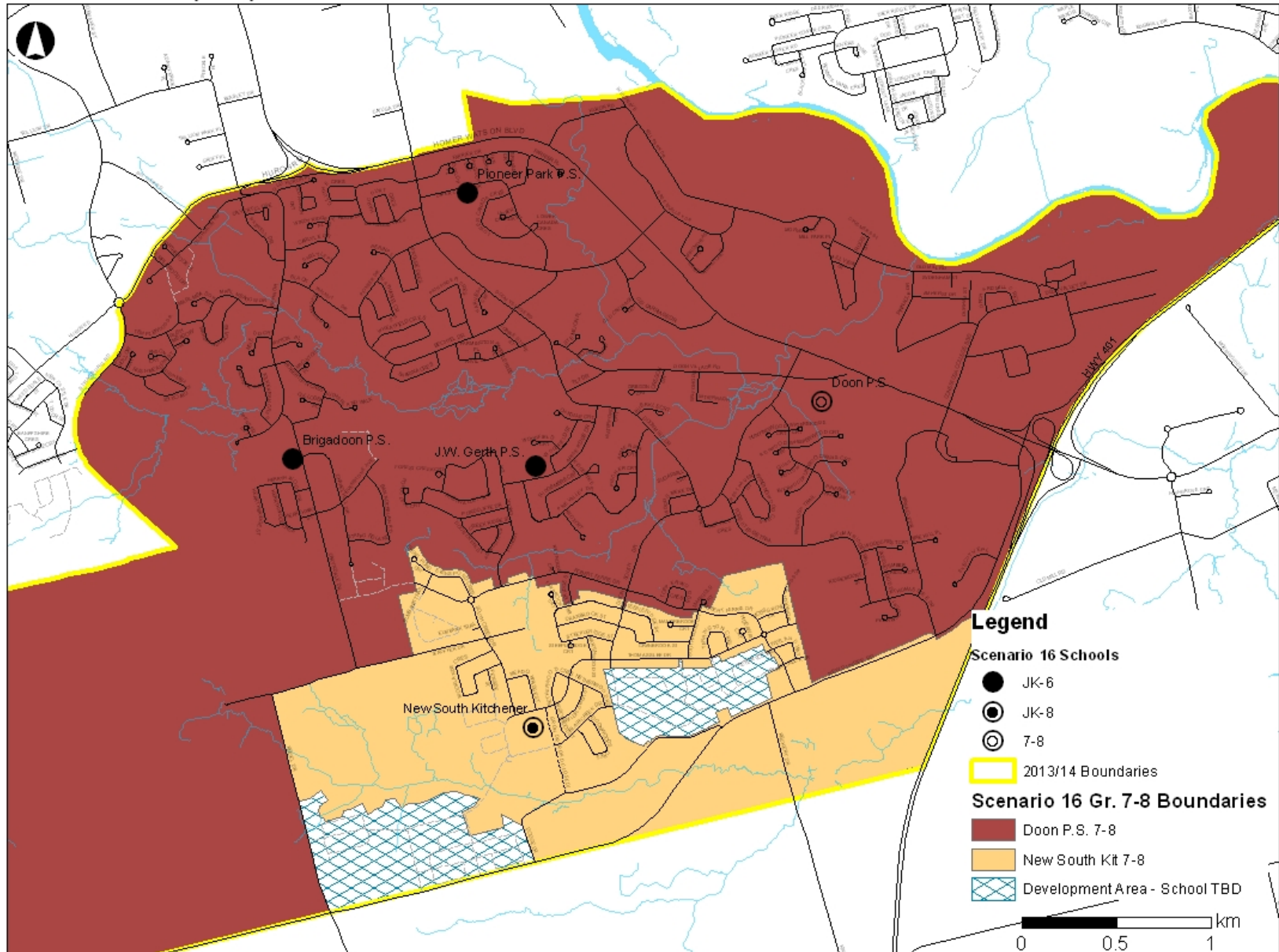
# Scenario 16 – JK-6 Boundaries

Doon South Boundary Study - Scenario 16 JK-6 Boundaries



# Scenario 16 – 7-8 Boundaries

Doon South Boundary Study - Scenario 16 Gr. 7-8 Boundaries





# Scenario 16 – Projections

Scenario 16 F - 2016 Implementation																						
School	Scenario 16 F Grades	2016-2017							2018-2019							2020-2021						
		JK-6	1-6 FI	7-8	7-8 FI	Total	Perm. Capacity	Temp. Capacity	JK-6	1-6 FI	7-8	7-8 FI	Total	Perm. Capacity	Temp. Capacity	JK-6	1-6 FI	7-8	7-8 FI	Total	Perm. Capacity	Temp. Capacity
Brigadoon P.S.	JK-6	285	210			495	421	3	305	200			505	421	4	340	190			530	421	5
Doon P.S.	7-8	60	20	310	70	460	331	6			285	135	420	331	4			275	160	435	331	5
J.W. Gerth P.S.	JK-6	355	165			520	536	0	385	185			570	536	1	370	175			545	536	0
Pioneer Park P.S.	JK-6	375				375	308	3	375				375	308	3	370				370	308	3
New School	JK-8	470	90	40	0	600	600		530	145	95	0	770	600	7	505	170	110	0	785	600	8
Development Areas		30		0		30			120		15		135			265		25		290		
<b>Total</b>		<b>1575</b>	<b>485</b>	<b>350</b>	<b>70</b>	<b>2480</b>	<b>2196</b>	<b>12</b>	<b>1715</b>	<b>530</b>	<b>395</b>	<b>135</b>	<b>2775</b>	<b>2196</b>	<b>19</b>	<b>1850</b>	<b>535</b>	<b>410</b>	<b>160</b>	<b>2955</b>	<b>2196</b>	<b>21</b>

## Scenario 16 (2016 Implementation)

School	2016/17 Capacity	New Capacity (requires approval)	Total Capacity Required	Grades	Year								
					2016	2017	2018	2019	2020	2021	2022	2023	2024
Brigadoon P.S.	421	46	467	JK-6	495	495	505	520	530	525	510	495	485
Doon P.S.	331	115	446	7-8	465	380	420	430	435	435	455	455	455
J.W. Gerth P.S.	536		536	JK-6	520	585	565	555	550	540	535	525	520
Pioneer Park P.S.	308	46	354	JK-6	375	370	375	375	370	365	365	360	360
New School	600	138	738	JK-8	595	715	775	780	785	770	750	735	715
Development Areas					30	70	135	200	295	410	510	570	600
<b>Total</b>	<b>2196</b>		<b>2541</b>		<b>2480</b>	<b>2620</b>	<b>2775</b>	<b>2860</b>	<b>2965</b>	<b>3050</b>	<b>3125</b>	<b>3140</b>	<b>3135</b>

## Scenario 16 Description:

- New South Kitchener school (JK-8) boundary takes in portions of the current Brigadoon P.S. and J.W. Gerth P.S. boundaries (JK-6) and Doon P.S. boundary (7-8)
- Doon P.S. remains as senior (7-8) school for Brigadoon P.S., Pioneer Park P.S. and J.W. Gerth P.S. students
- Boundary modifications for Brigadoon P.S. (add Area Q2, remove Areas E, G, H, J, V, W, X), J.W. Gerth P.S. (add Areas E2, J and R2, remove Areas K, L, T, U, Y) and Pioneer Park P.S. (remove Areas Q2 and R2)
- French Immersion program offered at Brigadoon P.S. (1-6), J.W. Gerth P.S. (1-6 by 2016), the New South Kitchener school (1-4 in 2016, 1-6 by 2018) and Doon P.S. (7-8 by 2014)
- Development Areas established – future school to be determined

# Scenario 16 v. Objectives

Objectives	Met?
• To establish a boundary for the new South Kitchener Groh Drive elementary school	<input checked="" type="checkbox"/>
• To increase the number of students housed in permanent accommodation in a cost-effective way	<input checked="" type="checkbox"/>
• To provide equitable learning opportunities for students and staff by moving towards the following criteria ( <i>from Board Policy 3002</i> ):	
• <i>JK-6 facilities between 350 and 400 students (approx. 2 classes/grade)</i>	<input checked="" type="checkbox"/>
• <i>JK-8 facilities between 500 and 650 students (approx. 2 classes/grade JK-6, 2+ classes/grade 7-8)</i>	<input checked="" type="checkbox"/>
• <i>Minimizing the potential for schools with enrolments over 650 students</i>	<input checked="" type="checkbox"/>
• To increase the number of students within walking distance to their assigned school (<1.6 km)	<input checked="" type="checkbox"/>
• To establish boundaries around "Development Areas" where proposed plans of subdivision are temporarily assigned to holding schools until a permanent accommodation solution can be determined	<input checked="" type="checkbox"/>
• To develop an interim (temporary) accommodation strategy, beginning in September 2014, to assist schools with increasing enrolment until such time as the new South Kitchener Groh Drive school is open	<input checked="" type="checkbox"/>



# Public Meeting # 2 Scenario Feedback

## **General**

- Appreciation that comments from last public meeting re: scenarios were heard and new scenarios developed to address those comments

## **Scenario 14**

- Addresses FI issue
- Would cause the least disruption to older children

## **Scenario 16**

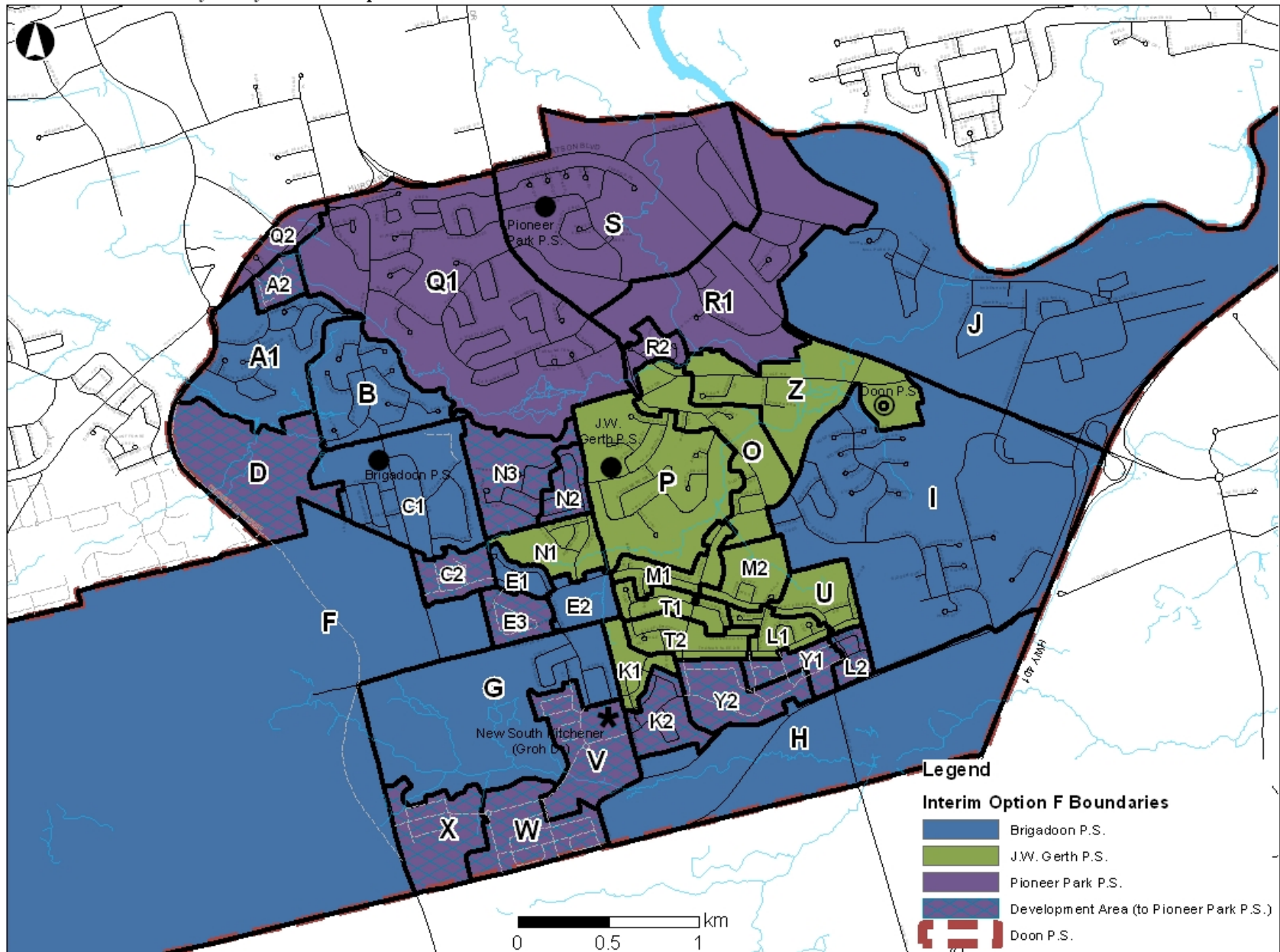
- Doon PS is a good size and not too large
- Allows for fewer transitions for those students at the new South Kit. School
- Optimizes students walking to school both at Doon and the new South Kit. School
- Having two schools for Grades 7/8 allows population to be spread out and doesn't result in as large number of students that age at one school





# Interim Option Development Areas

Doon South Boundary Study - Interim Option Boundaries



# Interim Option Summary

## Option A

- Gr. 4-6 students in future New South Kit. boundary (from J.W. Gerth P.S. and Brigadoon P.S.) attend Doon P.S.

## Option B

- All Gr. 5-6 students in J.W. Gerth P.S. boundary attend Doon P.S.

## Option C

- All Gr. 5-6 students in J.W. Gerth P.S. boundary attend Doon P.S.
- All Gr. 5-6 students in future New South Kit. boundary (from Brigadoon P.S.) attend Doon P.S.

## Option D

- All Gr. 1-6 students in future New South Kit. Boundary (from J.W. Gerth P.S. and Brigadoon P.S.) attend Doon P.S.

## Option E

- All Gr. 4-6 students in J.W. Gerth P.S. boundary attend Doon P.S.
- All Gr. 6 students in Brigadoon P.S. boundary attend Doon P.S.

## Option F

- All Gr. 5-6 students in J.W. Gerth P.S. boundary attend Doon P.S.
- Development areas established and directed to Pioneer Park P.S.



# Interim Option F

2016 Implementation												
Scenario 14	2014			2015			2016			2017		
School	Grades	Enrolment	Portables	Grades	Enrolment	Portables	Grades	Enrolment	Portables	Grades	Enrolment	Portables
Brigadoon P.S.	JK-6	555	6	JK-6	595	8	JK-6	505	4	JK-6	495	3
Doon P.S.	5-8	510	8	5-8	580	11	6-8	540	9	7-8	470	6
J.W. Gerth P.S.	JK-4	640	5	JK-4	625	4	JK-5	475		JK-6	530	0
Pioneer Park P.S.	JK-6	440	6	JK-6	530	10	JK-6	375	3	JK-6	370	3
New School	N/A	0		N/A	0		JK-5	555		JK-6	680	3
Development Areas		0			0			30			70	
<b>Total</b>		<b>2140</b>	<b>24</b>		<b>2330</b>	<b>32</b>		<b>2480</b>	<b>16</b>		<b>2620</b>	<b>15</b>

2016 Implementation												
Scenario 16	2014			2015			2016			2017		
School	Grades	Enrolment	Portables	Grades	Enrolment	Portables	Grades	Enrolment	Portables	Grades	Enrolment	Portables
Brigadoon P.S.	JK-6	555	6	JK-6	595	8	JK-6	495	3	JK-6	495	3
Doon P.S.	5-8	510	8	5-8	580	11	6-8	465	6	7-8	380	2
J.W. Gerth P.S.	JK-4	640	5	JK-4	625	4	JK-5	520	0	JK-6	585	2
Pioneer Park P.S.	JK-6	440	6	JK-6	530	10	JK-6	375	3	JK-6	370	3
New School	N/A	0		N/A	0		JK-7	595	0	JK-8	715	5
Development Areas		0			0			30			70	
<b>Total</b>		<b>2140</b>	<b>24</b>		<b>2330</b>	<b>32</b>		<b>2480</b>	<b>12</b>		<b>2620</b>	<b>15</b>

## Option F

- All Gr. 5-6 students in J.W. Gerth P.S. boundary attend Doon P.S.
- Development areas established and directed to Pioneer Park P.S.



# Public Meeting Comments Re: Interim Option F

## **Theme: Safety and welfare students**

- Grade 5-6 students not available at J.W. Gerth to act as standing patrols and bus patrols
  - They may have to get an adult crossing guard which should be a possibility
  - Short-term problem
  - Having a school that is 200 students over capacity is also an issue
- Grade 7-8 students are highly physical (pushing and shoving) in the halls
  - Various grade levels can be in different parts of the school (separate the younger students from the older ones). Sometimes young students push and shove as much as the older ones.

## **Theme: Leadership opportunities**

- Gr. 5-6 students will miss out by not having leadership opportunities they were looking forward to at J.W. Gerth P.S. (e.g., standing patrols, student secretaries, lunch room helpers, reading buddies, etc.)
  - Can be dealt with by creating strategic plan for successful integration of Gr. 5-6 students in Doon and similar plan for those left at J.W. Gerth P.S.
- JK-4 students will miss out by not having reading buddies, older leaders in the school
  - Can still do reading buddies with smaller age ranges.



# Public Meeting Comments Re: Interim Option F

## Theme: Separation of families

- Some families will be left with students in 2-3 different schools (3 if there are high-school aged students in the family)
  - This could be the case today too comment that in this current "perfect world" a neighbour has 3 children, at 3 different schools; JW Gerth, Doon & Huron Heights, with 3 different bell times. It happens!
- Older students unable to walk younger siblings to school and care for them when parents are not home
  - Some feedback questions why we are putting this responsibility on our Gr. 5-6 students, should be the responsibility of the parents
- Bell times are different between the schools
  - This could be the case today. There are no proposed bell time change for J.W. Gerth, but there is for Doon P.S. Likely reason for the time difference is because the same bus(es) will be used at Gerth, Brigadoon, Doon and Pioneer Park because of the proximity of schools and density of the student population. Condensing them would add more vehicles and increase costs.
- No guarantee of Before and After care program at Doon P.S.

## Theme: Learning

- Students with modified IEPs have difficulty with changing schools - what types of programs or aids will be in place for these students?
- Will resources be available at Doon P.S. for Gr. 5-6 students?
  - Yes.

# Public Meeting Comments Re: Interim Option F

## Theme: Social

- Grade 7-8 students have different social needs (e.g. police drug and OK2BMe assemblies) than 5-6
- Grade 5 and 6 students are too young to be exposed to a middle school culture where discussions of sex, drugs and alcohol are common
- Grade 5-6 students are younger emotionally than those in 7-8

## Other Comments

- Well thought out plan
- Minimal impact on children involved
- Affects 25% of Gerth population, all of these kids would have eventually been attending Doon anyway
- A reasonable solution to a complicated situation
- Issues can be resolved by creating a transition team
- Requires more short-term busing when board is trying to reduce transportation costs
- Will minimize disruption to Brigadoon families
- Will address immediate health and safety concerns at J.W. Gerth P.S.
- Most logical option proposed with the best balance remaining for the 3 elementary schools
- Addresses overcrowding at J.W. Gerth P.S. and recognizes that Brigadoon can accommodate increased population until the new school is built.



# New Interim Options (Summary)

## Option G

- All Gr. 5-6 students in J.W. Gerth P.S. boundary attend Pioneer Park P.S.
- Development areas established and directed to school outside of Doon South study area

## Option H

- All Gr. 6 students in J.W. Gerth P.S. boundary attend Doon P.S.
- Development areas established and directed to Pioneer Park P.S.

## Option I

- All JK-6 students in future New South Kit. Boundary (from J.W. Gerth P.S.) attend Pioneer Park P.S.
- Development areas established and directed to school outside of Doon South study area

## Option J

- All 1-6 students in future New South Kit. Boundary (from J.W. Gerth P.S.) attend Pioneer Park P.S.
- Development areas established and directed to school outside of Doon South study area





## Scenario 14

### Interim Option G

### 2016 Implementation

School	2014			2015			2016			2017		
	Grades	Enrolment	Portables	Grades	Enrolment	Portables	Grades	Enrolment	Portables	Grades	Enrolment	Portables
Brigadoon P.S.	JK-6	555	6	JK-6	595	8	JK-6	505	4	JK-6	495	4
Doon P.S.	7-8	380	2	7-8	415	4	7-8	425	4	7-8	470	6
J.W. Gerth P.S.	JK-4	640	5	JK-4	625	4	JK-5	475	0	JK-6	530	0
Pioneer Park P.S.	JK-6	500	9	JK-6	535	11	JK-6	485	9	JK-6	370	4
New School	N/A	0		N/A	0		JK-5	555	0	JK-6	680	3
Development Areas		70			160			30			70	
<b>Total</b>		<b>2140</b>	<b>23</b>		<b>2325</b>	<b>27</b>		<b>2475</b>	<b>17</b>		<b>2620</b>	<b>17</b>

## Scenario 16

### Interim Option G

### 2016 Implementation

School	2014			2015			2016			2017		
	Grades	Enrolment	Portables	Grades	Enrolment	Portables	Grades	Enrolment	Portables	Grades	Enrolment	Portables
Brigadoon P.S.	JK-6	555	6	JK-6	595	8	JK-6	495	4	JK-6	495	4
Doon P.S.	7-8	380	2	7-8	415	4	7-8	385	2	7-8	380	2
J.W. Gerth P.S.	JK-4	640	5	JK-4	625	4	JK-5	600	0	JK-6	585	3
Pioneer Park P.S.	JK-6	500	9	JK-6	535	11	JK-6	375	4	JK-6	370	4
New School	N/A	0		N/A	0		JK-7	595	0	JK-8	715	5
Development Areas		70			160			30			70	
<b>Total</b>		<b>2140</b>	<b>23</b>		<b>2325</b>	<b>27</b>		<b>2480</b>	<b>10</b>		<b>2620</b>	<b>17</b>

## Option G

- All Gr. 5-6 students in J.W. Gerth P.S. boundary attend Pioneer Park P.S.
- Development areas established and directed to school outside of Doon South study area



# Interim Option H

## Scenario 14

### Interim Option H

#### 2016 Implementation

School	2014			2015			2016			2017		
	Grades	Enrolment	Portables	Grades	Enrolment	Portables	Grades	Enrolment	Portables	Grades	Enrolment	Portables
Brigadoon P.S.	JK-6	555	6	JK-6	595	8	JK-6	505	4	JK-6	495	4
Doon P.S.	6-8	445	5	6-8	475	6	7-8	425	4	7-8	470	6
J.W. Gerth P.S.	JK-5	705	8	JK-5	725	9	JK-6	590	3	JK-6	530	0
Pioneer Park P.S.	JK-6	440	6	JK-6	530	10	JK-6	375	3	JK-6	370	3
New School	N/A	0		N/A	0		JK-5	555	0	JK-5	680	3
Development Areas		0			0			30			70	
<b>Total</b>		<b>2140</b>	<b>25</b>		<b>2330</b>	<b>33</b>		<b>2480</b>	<b>14</b>		<b>2620</b>	<b>16</b>

## Option H

- All Gr. 6 students in J.W. Gerth P.S. boundary attend Doon P.S.
- Development areas established and directed to Pioneer Park P.S.

## Scenario 16

### Interim Option H

#### 2016 Implementation

School	2014			2015			2016			2017		
	Grades	Enrolment	Portables	Grades	Enrolment	Portables	Grades	Enrolment	Portables	Grades	Enrolment	Portables
Brigadoon P.S.	JK-6	555	6	JK-6	595	8	JK-6	495	4	JK-6	495	4
Doon P.S.	6-8	445	5	6-8	475	6	7-8	385	2	7-8	380	2
J.W. Gerth P.S.	JK-5	705	8	JK-5	725	9	JK-6	600	3	JK-6	585	3
Pioneer Park P.S.	JK-6	440	6	JK-6	530	10	JK-6	375	3	JK-6	370	3
New School	N/A	0		N/A	0		JK-7	595	0	JK-8	715	5
Development Areas		0			0			30			70	
<b>Total</b>		<b>0</b>	<b>25</b>		<b>0</b>	<b>33</b>		<b>0</b>	<b>12</b>		<b>0</b>	<b>16</b>



# Interim Option I

## Scenario 14

### Interim Option I

#### 2016 Implementation

School	2014			2015			2016			2017		
	Grades	Enrolment	Portables	Grades	Enrolment	Portables	Grades	Enrolment	Portables	Grades	Enrolment	Portables
Brigadoon P.S.	JK-6	555	6	JK-6	595	8	JK-6	505	4	JK-6	495	4
Doon P.S.	7-8	380	2	7-8	415	4	7-8	425	4	7-8	470	6
J.W. Gerth P.S.	JK-6	485	-2	JK-6	510	-1	JK-6	540	1	JK-6	530	0
Pioneer Park P.S.	JK-6	650	15	JK-6	650	15	JK-6	405	4	JK-6	370	3
New School	N/A	0		N/A	0		JK-5	555		JK-6	680	3
Development Areas		70			160			50			70	
<b>Total</b>		<b>2140</b>	<b>22</b>		<b>2330</b>	<b>26</b>		<b>2480</b>	<b>13</b>		<b>2620</b>	<b>16</b>

## Scenario 16

### Interim Option I

#### 2016 Implementation

School	2014			2015			2016			2017		
	Grades	Enrolment	Portables	Grades	Enrolment	Portables	Grades	Enrolment	Portables	Grades	Enrolment	Portables
Brigadoon P.S.	JK-6	555	6	JK-6	595	8	JK-6	495	4	JK-6	495	4
Doon P.S.	7-8	380	2	7-8	415	4	7-8	385	2	7-8	380	2
J.W. Gerth P.S.	JK-6	520	0	JK-6	545	1	JK-6	600	3	JK-6	585	3
Pioneer Park P.S.	JK-6	620	14	JK-6	615	13	JK-6	375	3	JK-6	370	3
New School	N/A	0		N/A	0		JK-7	595		JK-8	715	5
Development Areas		70			160			30			70	
<b>Total</b>		<b>2140</b>	<b>22</b>		<b>2330</b>	<b>26</b>		<b>2480</b>	<b>12</b>		<b>2620</b>	<b>16</b>

### Option I

- All JK-6 students in future New South Kit. Boundary (from J.W. Gerth P.S.) attend Pioneer Park P.S.
- Development areas established and directed to school outside of Doon South study area



# Interim Option J

Scenario 14  
Interim Option J

School	2016 Implementation											
	2014			2015			2016			2017		
	Grades	Enrolment	Portables	Grades	Enrolment	Portables	Grades	Enrolment	Portables	Grades	Enrolment	Portables
Brigadoon P.S.	JK-6	555	6	JK-6	595	8	JK-6	505	4	JK-6	495	4
Doon P.S.	7-8	380	2	7-8	415	4	7-8	425	4	7-8	470	6
J.W. Gerth P.S.	JK-6	585	3	JK-6	605	3	JK-6	540	1	JK-6	530	0
Pioneer Park P.S.	JK-6	555	11	JK-6	555	11	JK-6	405	4	JK-6	370	3
New School	N/A	0		N/A	0		JK-5	555		JK-6	680	3
Development Areas		70			160			50			70	
<b>Total</b>		<b>2140</b>	<b>22</b>		<b>2330</b>	<b>26</b>		<b>2480</b>	<b>13</b>		<b>2620</b>	<b>16</b>

Scenario 16  
Interim Option J

School	2016 Implementation											
	2014			2015			2016			2017		
	Grades	Enrolment	Portables	Grades	Enrolment	Portables	Grades	Enrolment	Portables	Grades	Enrolment	Portables
Brigadoon P.S.	JK-6	555	6	JK-6	595	8	JK-6	495	4	JK-6	495	4
Doon P.S.	7-8	380	2	7-8	415	4	7-8	385	2	7-8	380	2
J.W. Gerth P.S.	JK-6	600	3	JK-6	620	4	JK-6	600	3	JK-6	585	3
Pioneer Park P.S.	JK-6	540	10	JK-6	540	10	JK-6	375	3	JK-6	370	3
New School	N/A	0		N/A	0		JK-7	595		JK-8	715	5
Development Areas		70			160			30			70	
<b>Total</b>		<b>2140</b>	<b>22</b>		<b>2325</b>	<b>26</b>		<b>2480</b>	<b>12</b>		<b>2620</b>	<b>16</b>

## Option J

- All 1-6 students in future New South Kit. Boundary (from J.W. Gerth P.S.) attend Pioneer Park P.S.
- Development areas established and directed to school outside of Doon South study area



## Meeting Dates

- **Working Group #7: ?**



## Contact Information

- Website: [www.wrdsb.ca](http://www.wrdsb.ca)
  - » About>Planning>Boundary Studies
  - » Doon South Boundary Study
- E-mail: [boundaryfeedback@wrdsb.on.ca](mailto:boundaryfeedback@wrdsb.on.ca)
- Phone: 519-570-0003 ext. 4419

