

**Doon South**

**Boundary Study**

**Working Group Meeting #3**

November 6, 2013

J.W. Gerth P.S.

4:30 – 6:00 pm



Waterloo Region  
District School Board

# Agenda

1. Welcome
2. Draft Minutes Review/Approval
3. Business Arising from Minutes
  - a) October 31, 2013 Enrolments
  - b) Doon P.S. transportation discrepancy
  - c) Facilities Services
4. Public Meeting #1
  1. Review Feedback
5. Finalize Goals/Objectives
6. Scenario Discussion
  - a) Revised Projections
  - b) New Scenarios
7. Transitions/Interim Solutions Discussion
8. Roundtable



# October 31, 2013 Unofficial Enrolment

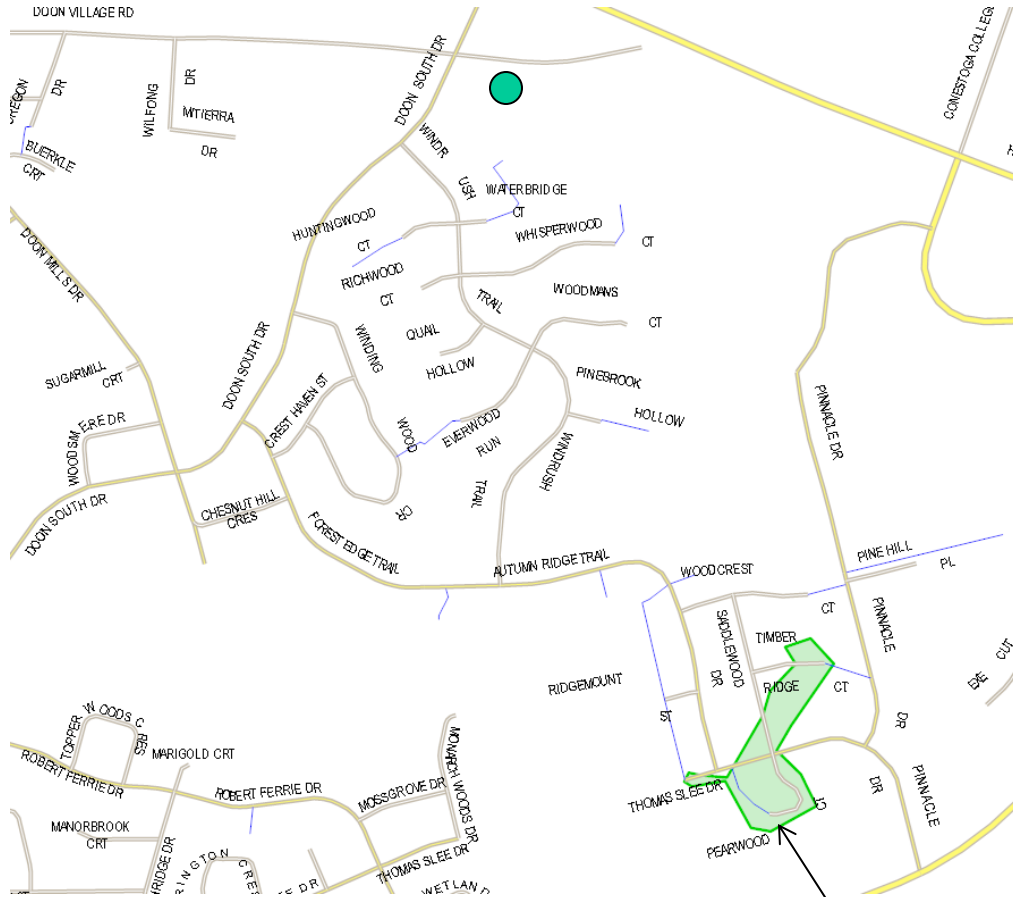
School	Grades	Unofficial Enrolment – October 31, 2013		Capacity (based on Ministry loading)*	Portables	Year Built	Site Size (acres)
		Total	FTE				
Brigadoon P.S.	JK-6	530	479	383	6	1992	9.37
Doon P.S.	7-8	336	336	331	3	1957	13.42
J.W. Gerth P.S.	JK-6	715	715	494	9	2007	4.99
Pioneer Park P.S.	JK-6	369	369	290	4	1977	6.07
<b>Total</b>		<b>1950</b>	<b>1899</b>	<b>1498</b>	<b>22</b>		<b>33.85</b>

\*Calculated using Ministry of Education's 2013/14 loading of rooms in the school (capacity does not include future additions for Full-Day Kindergarten)  
FTE refers to Full-Time Equivalent – Kindergarten students in alternate day program only occupy space in the school ½ the time



Waterloo Region  
District School Board

## Doon P.S. Transportation Discrepancy



*From Administrative Procedure 4260 –  
Student Transportation*

“All transportation measurements will be determined by STSWR and be based on the shortest distance by road, path or walkway from the corner of the property to closest access point to the school property or bus stop, and are subject to reasonable flexibility beyond the guidelines.

The use of flexibility may be exercised to support common experiences for all students residing in a neighbourhood. Flexibility will be used to establish a logical transition point between transported and non transported areas and to extend or limit busing to the end of a street, court or the nearest intersection. In no case will the flexibility exercised exceed 200 metres.

**STSWR Exception Area: “Within reasonable distance”**



# Info. From Facilities Services

- **Brigadoon P.S.**

- 6 portables is the max. the site can handle
- No parking expansion ability
- 2 classroom addition (to be completed for September 2014) may be expanded to a 4 classroom addition – decision will be made once tender closes
- Any further classroom additions would be very challenging

- **Doon P.S.**

- 25 portables is the max. the site's temporary electrical service can be accommodate
- Large addition (12+ classrooms) is possible in a few locations
- Parking can be expanded
- Play space would still be adequate with portables
- Earliest an addition that requires Ministry Capital Priorities Grant funding could be ready is September 2017



# Info. from Facilities Services

- **J.W. Gerth P.S.**
  - 9 portables is the max. the site can handle
  - No parking expansion ability
  - Any further classroom additions would be very challenging
  - Fields are not adequately sized for Gr. 7-8 students to play organized sports – adding Gr. 7-8 at this site is not recommended
- **Pioneer Park P.S.**
  - Approx. 21 portables could be accommodated on site
  - Classroom additions are possible
  - Parking can be expanded



## Themes:

- Boundary Adjustments (streets within walking distance)
- French Immersion
- Child Care
- Transition Plan
- Portables
- Long-range planning
- Funding

# Draft Objectives

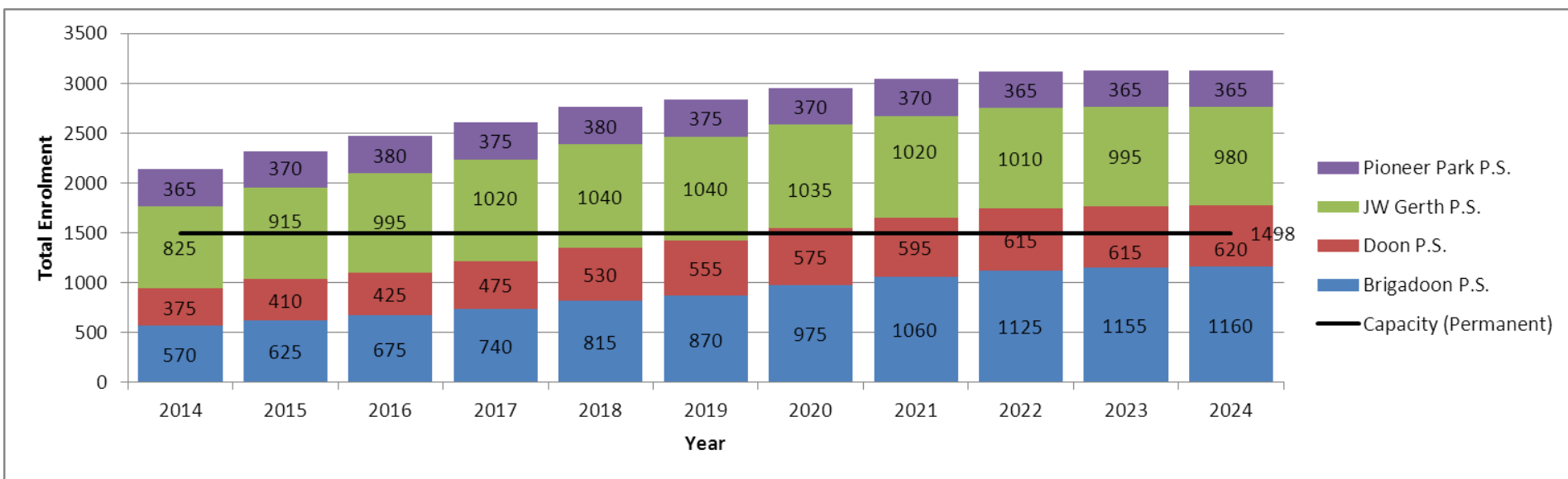
- To establish a boundary for the new South Kitchener Groh Drive elementary school
- To increase the number of students housed in permanent accommodation in a cost-effective way (was “to increase the number of students housed in permanent accommodation” and “to reduce the reliance on portable classrooms for long-term student accommodation”)
- To provide equitable learning opportunities for students and staff by moving towards the following criteria (*from Board Policy 3002*):
  - JK-6 facilities between 350 and 400 students (approx. 2 classes/grade)
  - JK-8 facilities between 500 and 650 students (approx. 2 classes/grade JK-6, 2+ classes/grade 7-8)
  - Minimizing the potential for schools with enrolments over 650 students
- To increase the number of students within walking distance to their assigned school (<1.6 km)
- To establish boundaries around "Development Areas" where proposed plans of subdivision are temporarily assigned to holding schools until a permanent accommodation solution can be determined
- To develop an interim (temporary) accommodation strategy, beginning in September 2014, to assist schools with increasing enrolment until such time as the new South Kitchener Groh Drive school is open





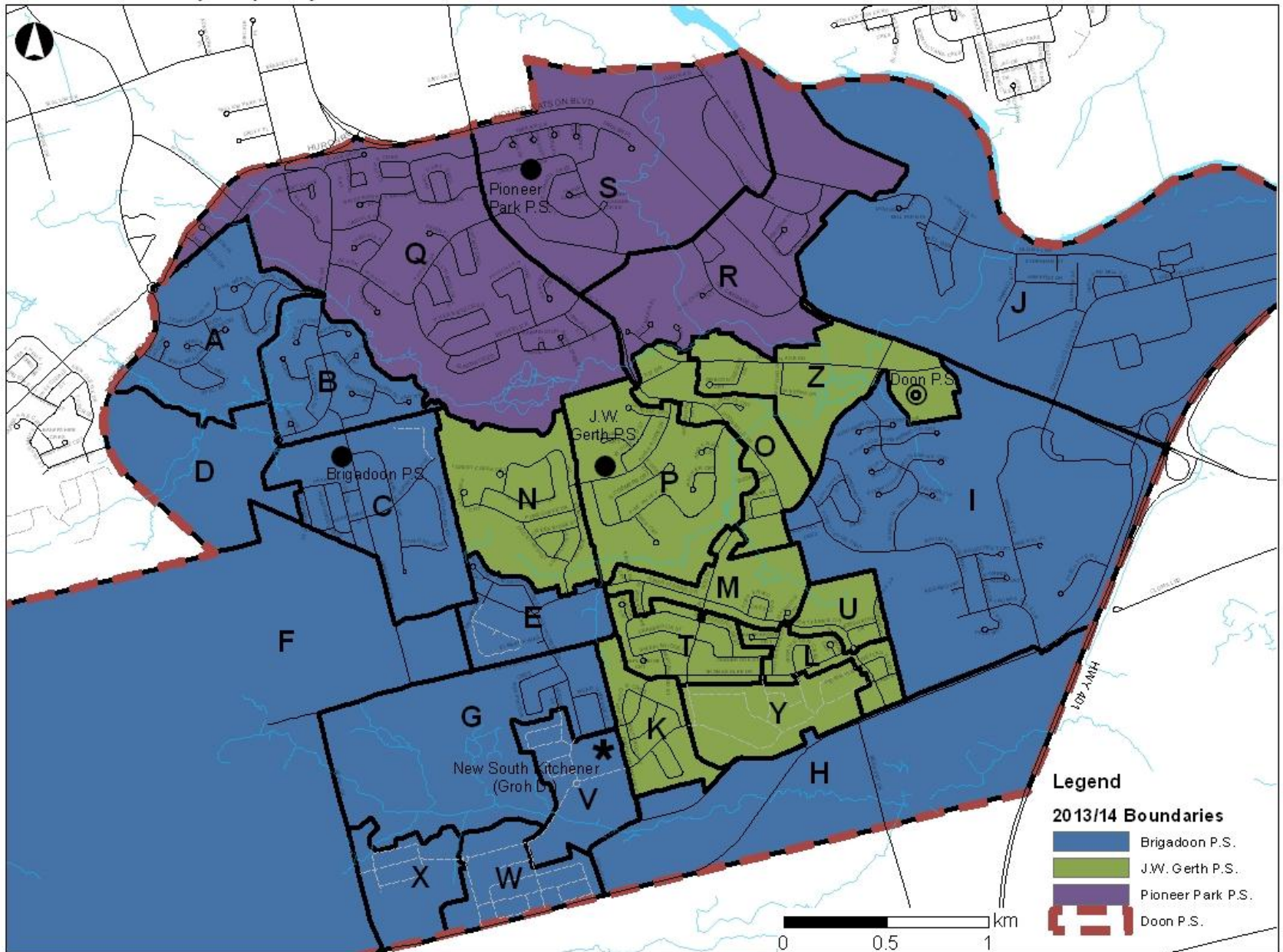
# Status Quo

		Status Quo																				
School	Status Quo Grades	2015-2016							2017-2018							2019-2020						
		JK-6	1-6 FI	7-8	7-8 FI	Total	OTG	Temp. Capacity	JK-6	1-6 FI	7-8	7-8 FI	Total	OTG	Temp. Capacity	JK-6	1-6 FI	7-8	7-8 FI	Total	OTG	Temp. Capacity
Brigadoon P.S.	JK-6	395	230			625	421	10	500	245			745	421	15	620	255			875	421	21
Doon P.S.	7-8			375	35	410	331	5			395	80	475	331	8			400	155	555	331	11
J.W. Gerth P.S.	JK-6	715	200			915	536	16	745	270			1015	536	21	765	275			1040	536	22
Pioneer Park P.S.	JK-6	370				370	308	4	375				375	308	4	375				375	308	4
Total		1480	430	375	35	2320	1596	35	1620	515	395	80	2610	1596	48	1760	530	400	155	2845	1596	58



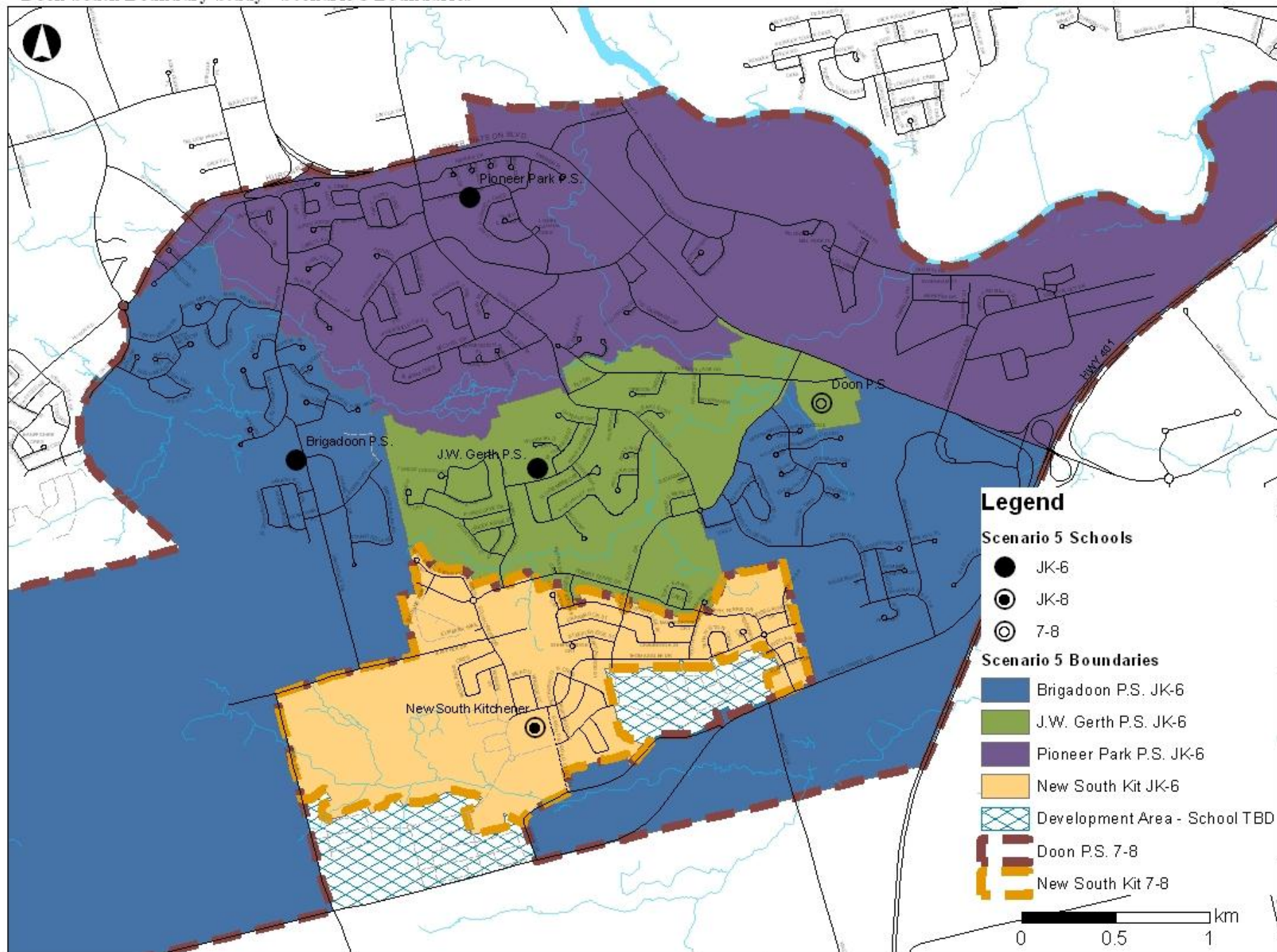
# Revised Projections Areas

Doon South Boundary Study - Projection Areas



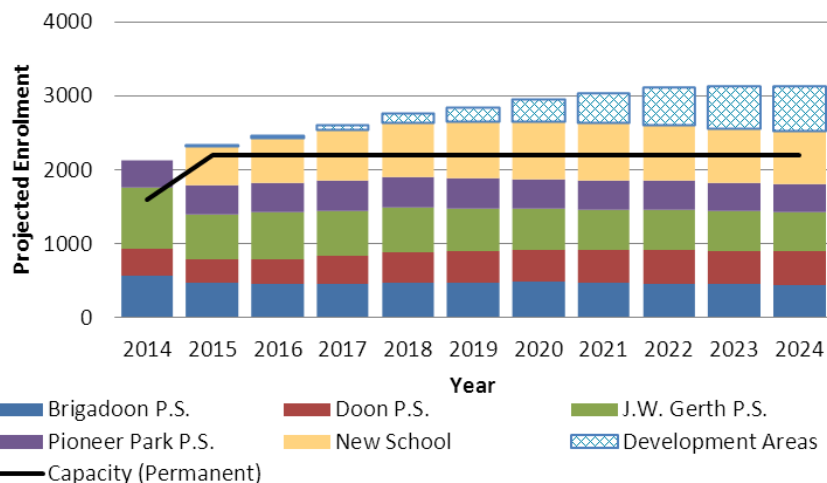


# Doon South Boundary Study - Scenario 5 Boundaries



		Scenario 5																				
School	Scenario 5 Grades	2015-2016							2017-2018						2019-2020							
		JK-6	1-6 FI	7-8	7-8 FI	Total	OTG	Temp. Capacity	JK-6	1-6 FI	7-8	7-8 FI	Total	OTG	Temp. Capacity	JK-6	1-6 FI	7-8	7-8 FI	Total	OTG	Temp. Capacity
Brigadoon P.S.	JK-6	250	225			475	421	3	255	215			470	421	3	295	190			485	421	4
Doon P.S.	7-8			290	35	325	331	1			295	80	375	331	4			280	155	435	331	6
J.W. Gerth P.S.	JK-6	425	185			610	536	4	390	225			615	536	4	375	195			570	536	2
Pioneer Park P.S.	JK-6	390				390	308	4	400				400	308	4	400				400	308	4
New School	JK-8	410	25	85	0	520	600		515	75	95	0	685	600	4	525	135	105	0	765	600	7
Development Areas		5		0		5			65		10		75			175		25		200		
Total		1480	435	375	35	2325	2196	12	1625	515	400	80	2620	2196	19	1770	520	410	155	2855	2196	23

## Doon South - Scenario 5

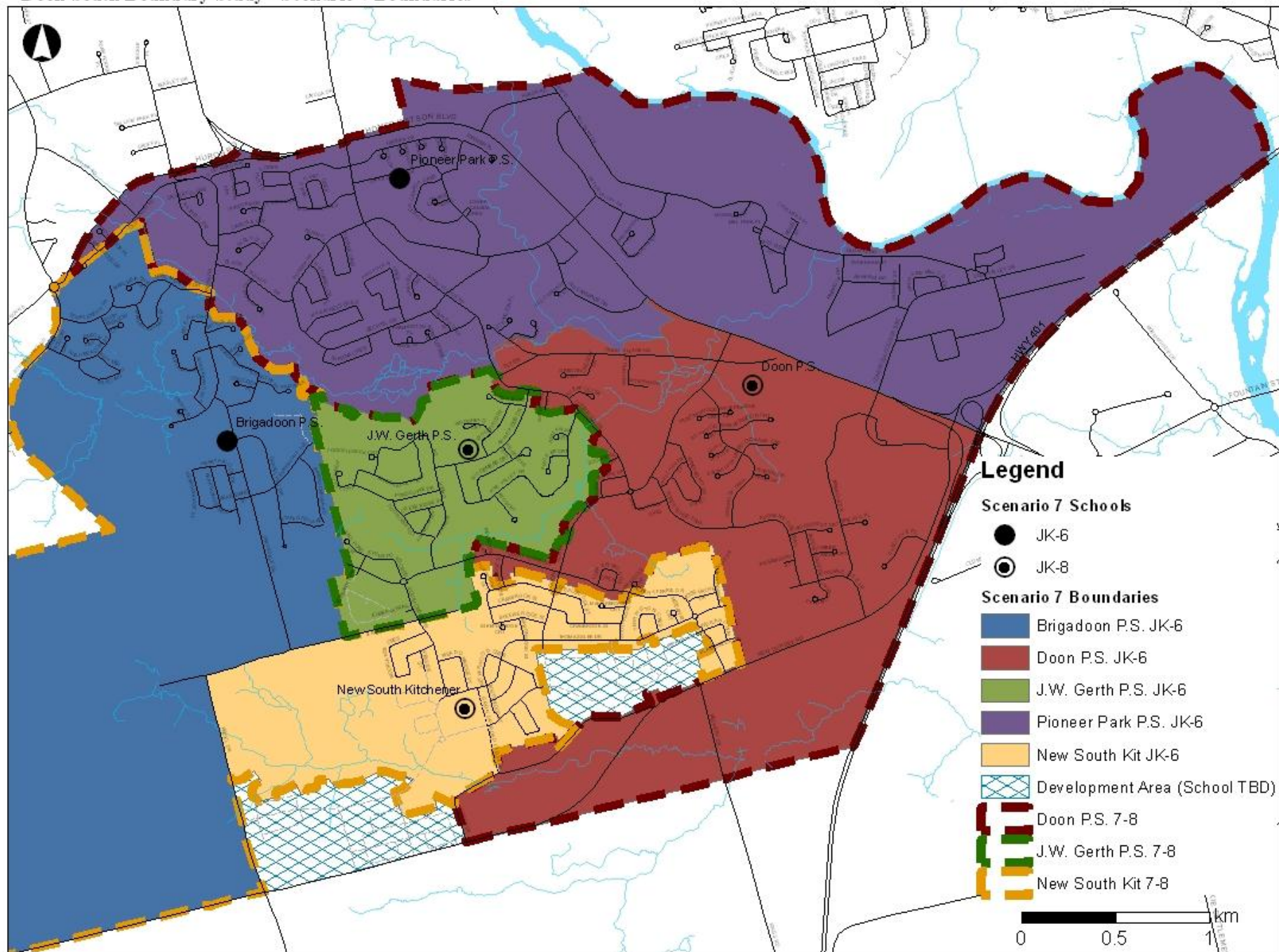


Draft Objectives	Met?
• To establish a boundary for the new South Kitchener Groh Drive elementary school	<input checked="" type="checkbox"/>
• To increase the number of students housed in permanent accommodation in a cost-effective way	TBD
• To provide equitable learning opportunities for students and staff by moving towards the following criteria (from Board Policy 3002):	
• JK-6 facilities between 350 and 400 students (approx. 2 classes/grade)	<input checked="" type="checkbox"/>
• JK-8 facilities between 500 and 650 students (approx. 2 classes/grade JK-6, 2+ classes/grade 7-8)	<input checked="" type="checkbox"/>
• Minimizing the potential for schools with enrolments over 650 students	<input checked="" type="checkbox"/>
• To increase the number of students within walking distance to their assigned school (<1.6 km)	<input checked="" type="checkbox"/>
• To establish boundaries around "Development Areas" where proposed plans of subdivision are temporarily assigned to holding schools until a permanent accommodation solution can be determined	<input checked="" type="checkbox"/>
• To develop an interim (temporary) accommodation strategy, beginning in September 2014, to assist schools with increasing enrolment until such time as the new South Kitchener Groh Drive school is open	TBD



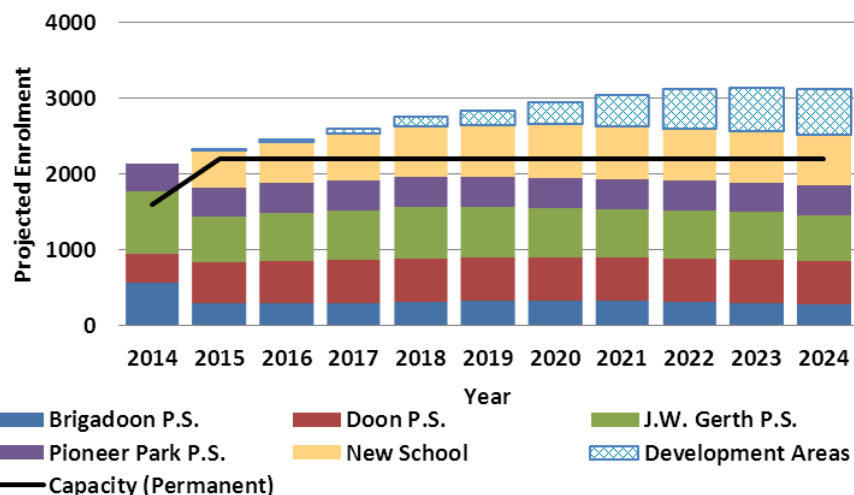


# Doon South Boundary Study - Scenario 7 Boundaries



		Scenario 7																				
School	Scenario 7 Grades	2015-2016							2017-2018							2019-2020						
		JK-6	1-6 FI	7-8	7-8 FI	Total	OTG	Temp. Capacity	JK-6	1-6 FI	7-8	7-8 FI	Total	OTG	Temp. Capacity	JK-6	1-6 FI	7-8	7-8 FI	Total	OTG	Temp. Capacity
Brigadoon P.S.	JK-6	150	145			295	421		170	140			310	421		205	120			325	421	
Doon P.S.	JK-8	205	115	195	35	550	331	11	190	125	180	65	560	331	11	190	120	185	85	580	331	12
J.W. Gerth P.S.	JK-8	385	160	55	0	600	536	3	365	200	85	15	665	536	6	350	185	65	70	670	536	6
Pioneer Park P.S.	JK-6	390				390	308	4	400				400	308	4	400				400	308	4
New School	JK-8	340	15	125	0	480	600		440	50	125	0	615	600	1	450	95	135	0	680	600	4
Development Areas		5		0		5			65		10		75			175		25		200		
Total		1475	435	375	35	2320	2196	18	1630	515	400	80	2625	2196	22	1770	520	410	155	2855	2196	26

## Doon South - Scenario 7



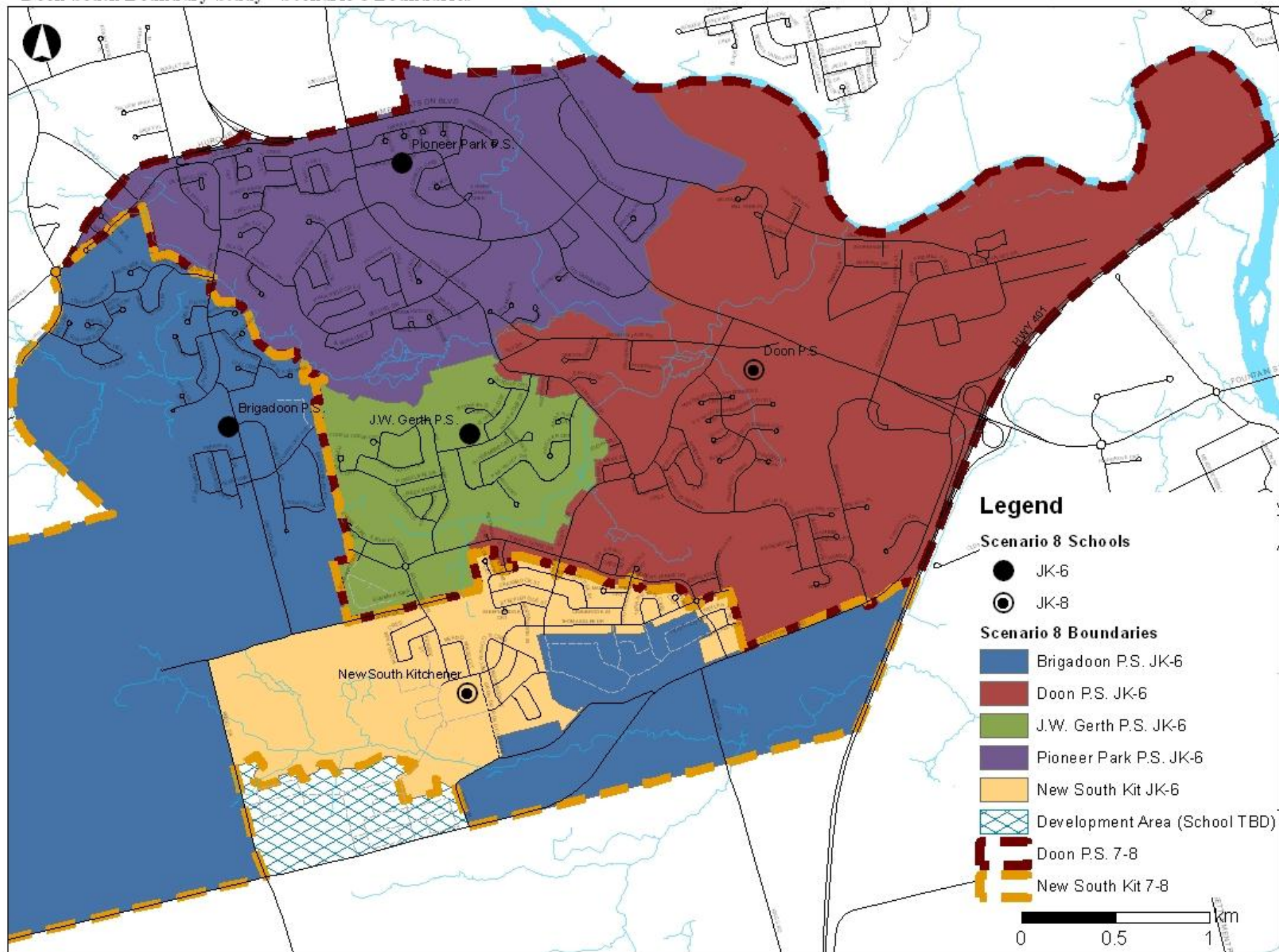
### Draft Objectives

Draft Objectives	Met?
• To establish a boundary for the new South Kitchener Groh Drive elementary school	<input checked="" type="checkbox"/>
• To increase the number of students housed in permanent accommodation in a cost-effective way	TBD
• To provide equitable learning opportunities for students and staff by moving towards the following criteria (from Board Policy 3002):	
• JK-6 facilities between 350 and 400 students (approx. 2 classes/grade)	<input checked="" type="checkbox"/>
• JK-8 facilities between 500 and 650 students (approx. 2 classes/grade JK-6, 2+ classes/grade 7-8)	<input checked="" type="checkbox"/>
• Minimizing the potential for schools with enrolments over 650 students	<input checked="" type="checkbox"/>
• To increase the number of students within walking distance to their assigned school (<1.6 km)	<input checked="" type="checkbox"/>
• To establish boundaries around "Development Areas" where proposed plans of subdivision are temporarily assigned to holding schools until a permanent accommodation solution can be determined	<input checked="" type="checkbox"/>
• To develop an interim (temporary) accommodation strategy, beginning in September 2014, to assist schools with increasing enrolment until such time as the new South Kitchener Groh Drive school is open	TBD



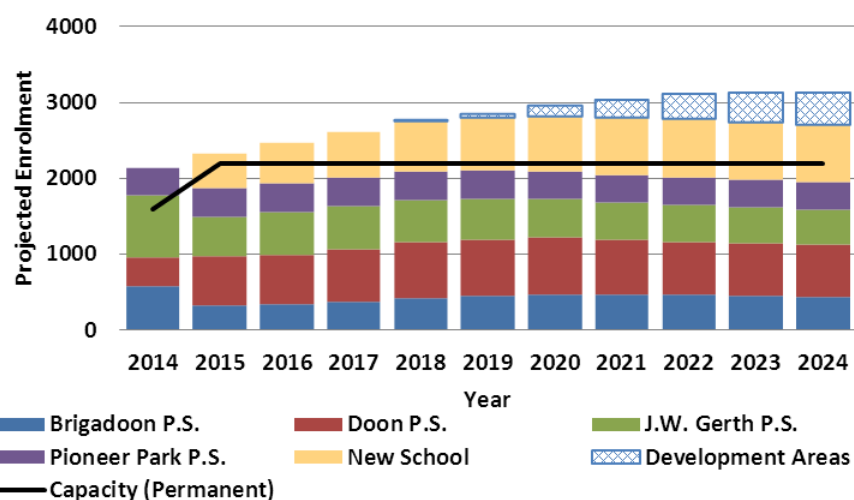


# Doon South Boundary Study - Scenario 8 Boundaries



		Scenario 8																				
School	Scenario 8 Grades	2015-2016							2017-2018						2019-2020							
		JK-6	1-6 FI	7-8	7-8 FI	Total	OTG	Temp. Capacity	JK-6	1-6 FI	7-8	7-8 FI	Total	OTG	Temp. Capacity	JK-6	1-6 FI	7-8	7-8 FI	Total	OTG	Temp. Capacity
Brigadoon P.S.	JK-6	160	160			320	421		225	140			365	421		315	130			445	421	
Doon P.S.	JK-8	250	100	255	35	640	331	15	225	125	270	80	700	331	17	220	125	250	155	750	331	20
J.W. Gerth P.S.	JK-6	380	155			535	536		365	200			565	536	1	350	185			535	536	
Pioneer Park P.S.	JK-6	370				370	308	3	375				375	308	3	375				375	308	3
New School	JK-8	325	15	125	0	465	600		425	55	125	0	605	600	1	445	100	150	0	695	600	4
Development Areas	0	0		0		0			0		0		0			50		5		55		
Total		1485	430	380	35	2330	2196	18	1615	520	395	80	2610	2196	22	1755	540	405	155	2855	2196	27

## Doon South - Scenario 8



Draft Objectives	Met?
• To establish a boundary for the new South Kitchener Groh Drive elementary school	<input checked="" type="checkbox"/>
• To increase the number of students housed in permanent accommodation in a cost-effective way	TBD
• To provide equitable learning opportunities for students and staff by moving towards the following criteria (from Board Policy 3002):	
• JK-6 facilities between 350 and 400 students (approx. 2 classes/grade)	<input checked="" type="checkbox"/>
• JK-8 facilities between 500 and 650 students (approx. 2 classes/grade JK-6, 2+ classes/grade 7-8)	<input checked="" type="checkbox"/>
• Minimizing the potential for schools with enrolments over 650 students	<input checked="" type="checkbox"/>
• To increase the number of students within walking distance to their assigned school (<1.6 km)	<input checked="" type="checkbox"/>
• To establish boundaries around "Development Areas" where proposed plans of subdivision are temporarily assigned to holding schools until a permanent accommodation solution can be determined	<input checked="" type="checkbox"/>
• To develop an interim (temporary) accommodation strategy, beginning in September 2014, to assist schools with increasing enrolment until such time as the new South Kitchener Groh Drive school is open	TBD





## Meeting Dates

- **Working Group #4:** November 21, 4:30 PM @ Doon P.S.
- **Public Meeting #2:** December 5, 7 PM @ Doon P.S.
- **Working Group #5:** TBD



## Contact Information

- Website: [www.wrdsb.ca](http://www.wrdsb.ca)
  - » About>Planning>Boundary Studies
  - » Doon South Boundary Study
- E-mail: [boundaryfeedback@wrdsb.on.ca](mailto:boundaryfeedback@wrdsb.on.ca)
- Phone: 519-570-0003 ext. 4419

