

Doon South

Elementary Schools Boundary Study

Public Meeting #1

November 5, 2013

Huron Heights S.S. 7:00 p.m.



Agenda

Doon South

Elementary Schools Boundary Study

Public Meeting #1

1. Welcome/Introductions
2. Explanation of the Boundary Study Process
3. Working Group
4. Study Objectives
5. Scenarios
6. Next Steps
7. Questions/Other



What is a Boundary Study?

- a public process that ensures a decision made by a school board regarding the realignment of attendance boundaries has the involvement of an informed local community



Reasons for a Boundary Study

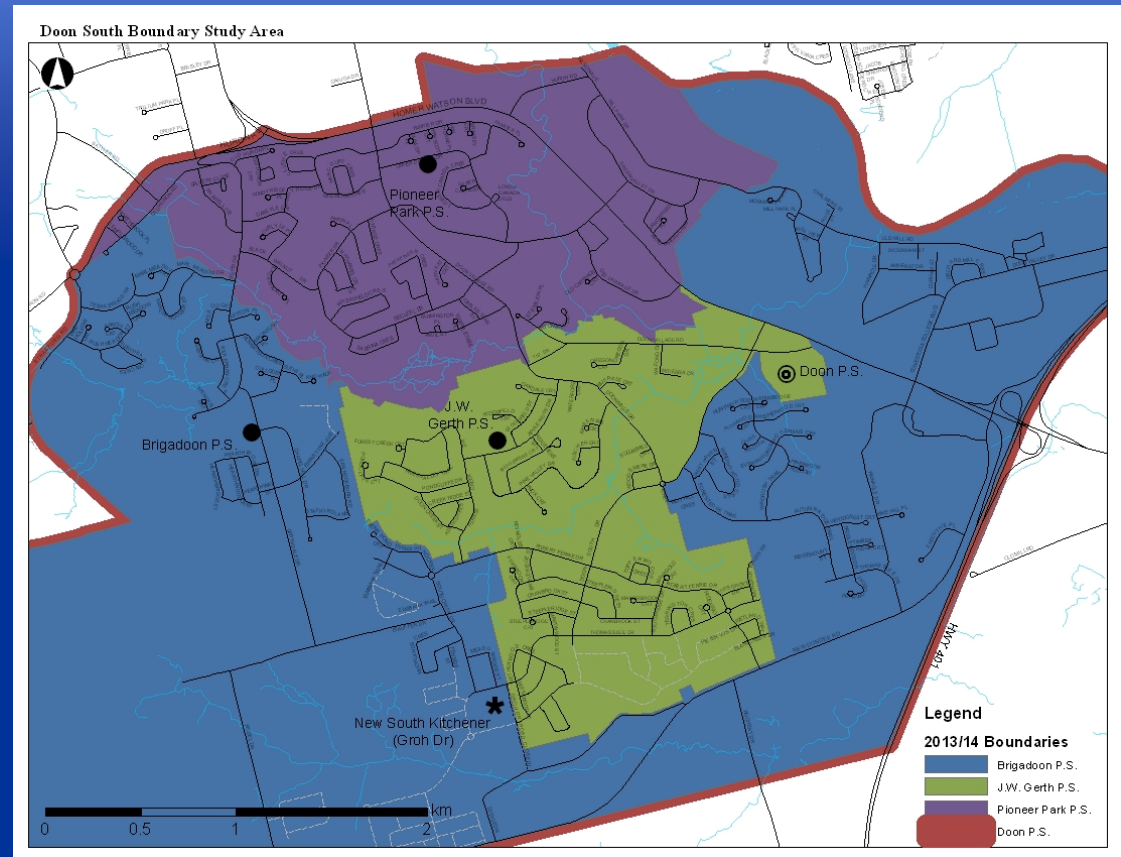
- Establishing the new boundary for a new school
- Changing the grade structure of a school
- Balancing enrolment



Study Area

■ The Doon South Study Area includes:

- Brigadoon P.S.
 - JK-6
- Doon P.S. P.S.
 - 7-8
- J.W. Gerth P.S.
 - JK-6
- Pioneer Park P.S.
 - JK-6
- New South Kit.
 - JK-8



School Size (Enrolment and Capacity)

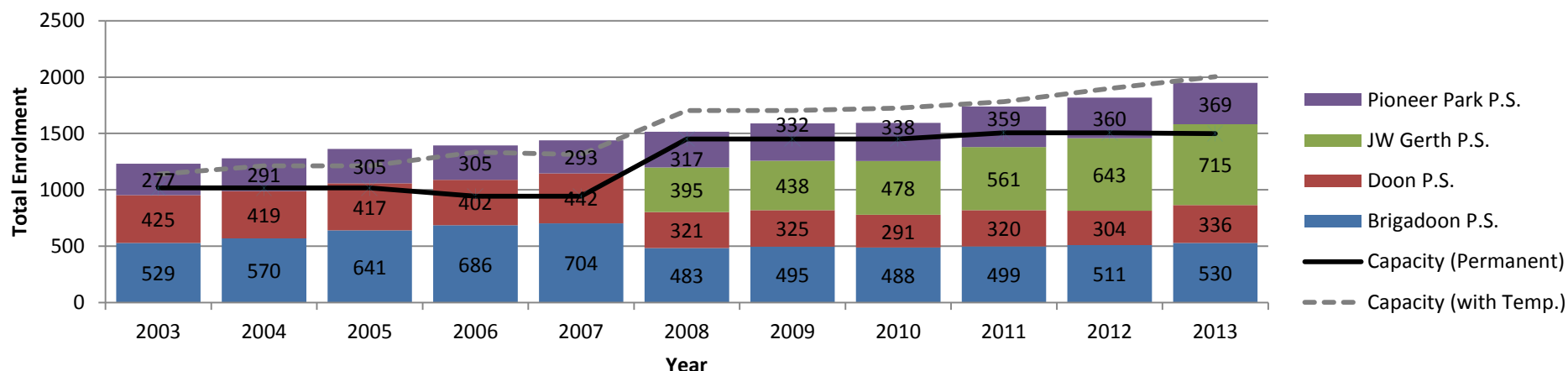
School	Grades	Unofficial Enrolment – October 31, 2013		Capacity (based on Ministry loading)	Portables	Year Built	Site Size (acres)
		Total	FTE				
Brigadoon P.S.	JK-6	530	479	383	6	1992	9.37
Doon P.S.	7-8	336	336	331	3	1957	13.42
J.W. Gerth P.S.	JK-6	715	715	494	9	2007	4.99
Pioneer Park P.S.	JK-6	369	369	290	4	1977	6.07
Total		1950	1899	1498	22		33.85

*Calculated using Ministry of Education's loading of rooms in the school (capacity does not include future additions for Full-Day Kindergarten)
FTE refers to Full-Time Equivalent – Kindergarten students in alternate day program only occupy space in the school ½ the time



Historic Enrolment 2003-2013

Doon South Enrolment by School: 2003-2013



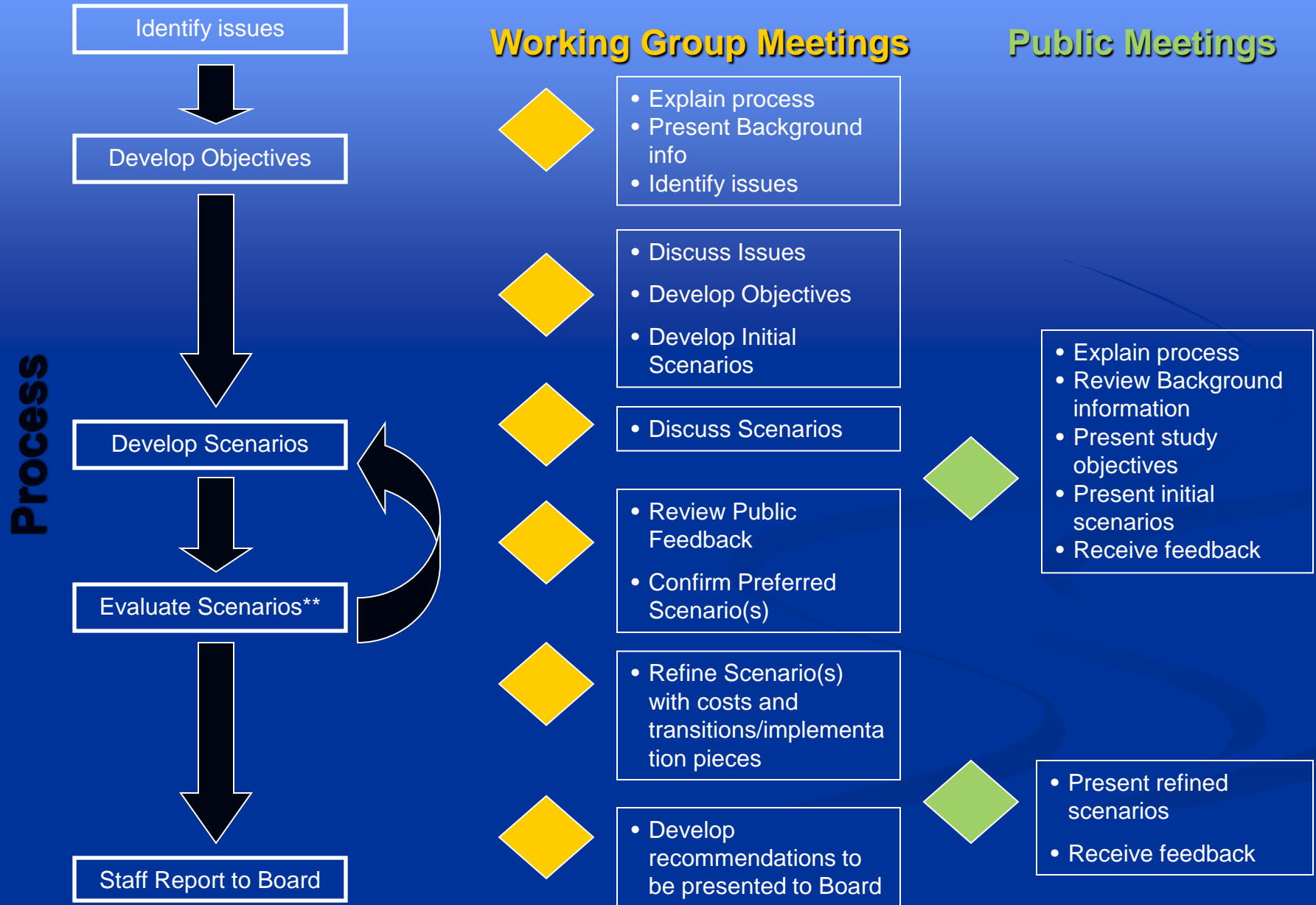
School	Change in Enrolment 2008-2013*
Brigadoon P.S.	9%
Doon P.S.	4%
J.W. Gerth P.S.	45%
Pioneer Park P.S.	14%
Total	22%

* In 2008, JW Gerth opened, Brigadoon and Pioneer Park added Gr. 6 and Doon converted from 6-8 to 7-8



Waterloo Region
District School Board

Boundary Study Process



**Scenario development and evaluation may go through multiple iterations as scenarios are evaluated , and new ideas result from the evaluation.

Timeline

2013

2014



Note: No boundary changes would be implemented prior to September 2014

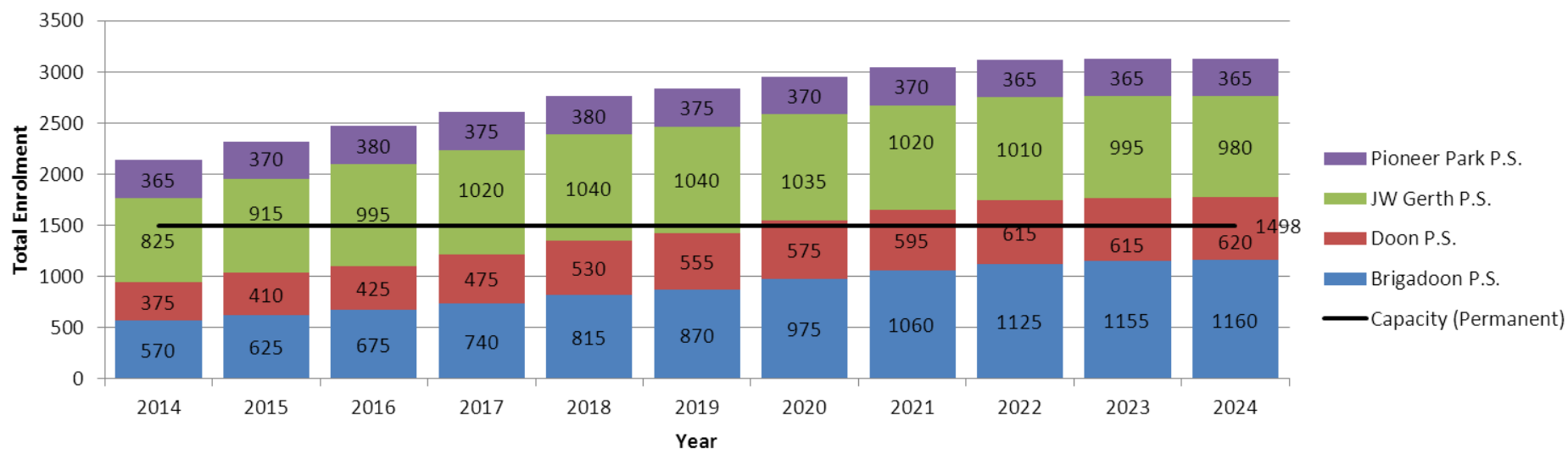


DRAFT Study Objectives

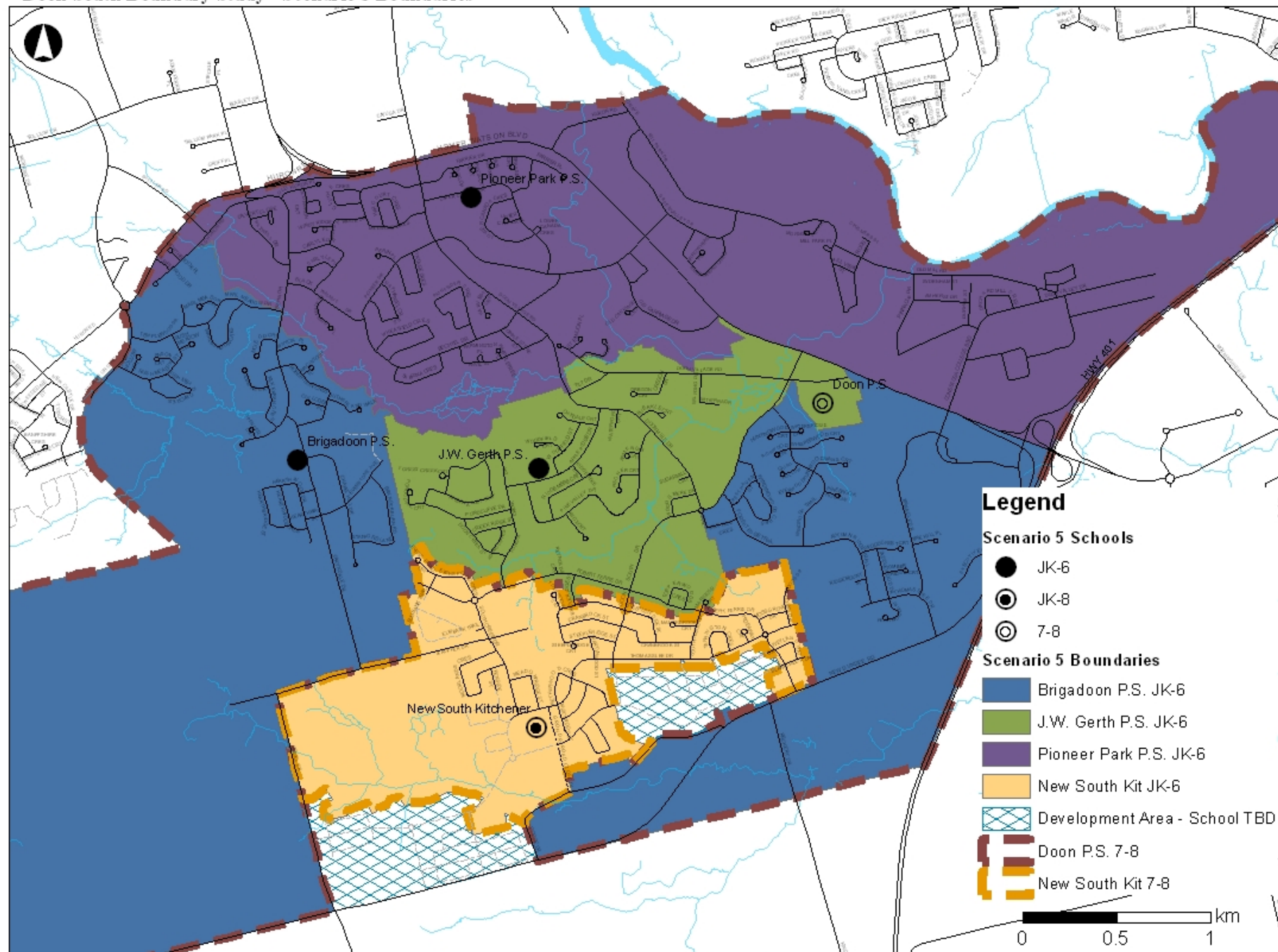
- To establish a boundary for the new South Kitchener Groh Drive elementary school
- To increase the number of students housed in permanent accommodation in a cost-effective way
- To provide equitable learning opportunities for students and staff by moving towards the following criteria (from Board Policy 3002):
 - *JK-6 facilities between 350 and 400 students (approx. 2 classes/grade)*
 - *JK-8 facilities between 500 and 650 students (approx. 2 classes/grade JK-6, 2+ classes/grade 7-8)*
 - *Minimizing the potential for schools with enrolments over 650 students*
- To increase the number of students within walking distance to their assigned school (<1.6 km)
- To establish boundaries around "Development Areas" where proposed plans of subdivision are temporarily assigned to holding schools until a permanent accommodation solution can be determined
- To develop an interim (temporary) accommodation strategy, beginning in September 2014, to assist schools with increasing enrolment until such time as the new South Kitchener Groh Drive school is open

Status Quo

		Status Quo																				
School	Status Quo Grades	2015-2016							2017-2018							2019-2020						
		JK-6	1-6 FI	7-8	7-8 FI	Total	OTG	Temp. Capacity	JK-6	1-6 FI	7-8	7-8 FI	Total	OTG	Temp. Capacity	JK-6	1-6 FI	7-8	7-8 FI	Total	OTG	Temp. Capacity
Brigadoon P.S.	JK-6	395	230			625	421	10	500	245			745	421	15	620	255			875	421	21
Doon P.S.	7-8			375	35	410	331	5			395	80	475	331	8			400	155	555	331	11
J.W. Gerth P.S.	JK-6	715	200			915	536	16	745	270			1015	536	21	765	275			1040	536	22
Pioneer Park P.S.	JK-6	370				370	308	4	375				375	308	4	375				375	308	4
Total		1480	430	375	35	2320	1596	35	1620	515	395	80	2610	1596	48	1760	530	400	155	2845	1596	58

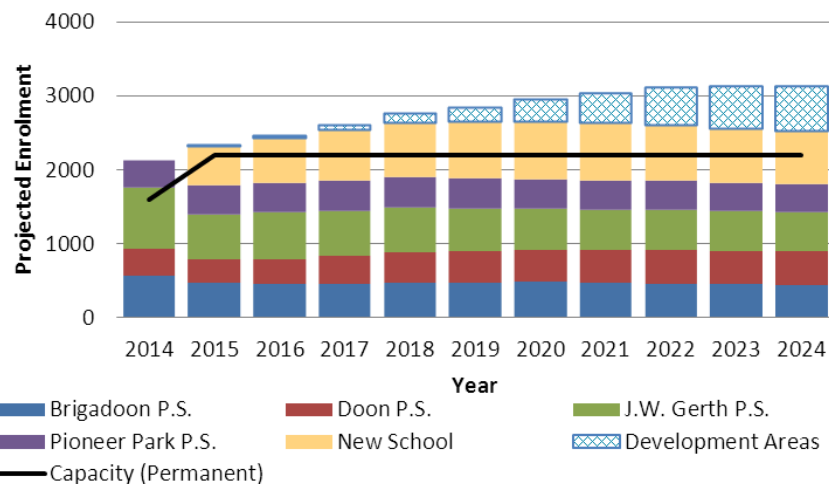


Doon South Boundary Study - Scenario 5 Boundaries

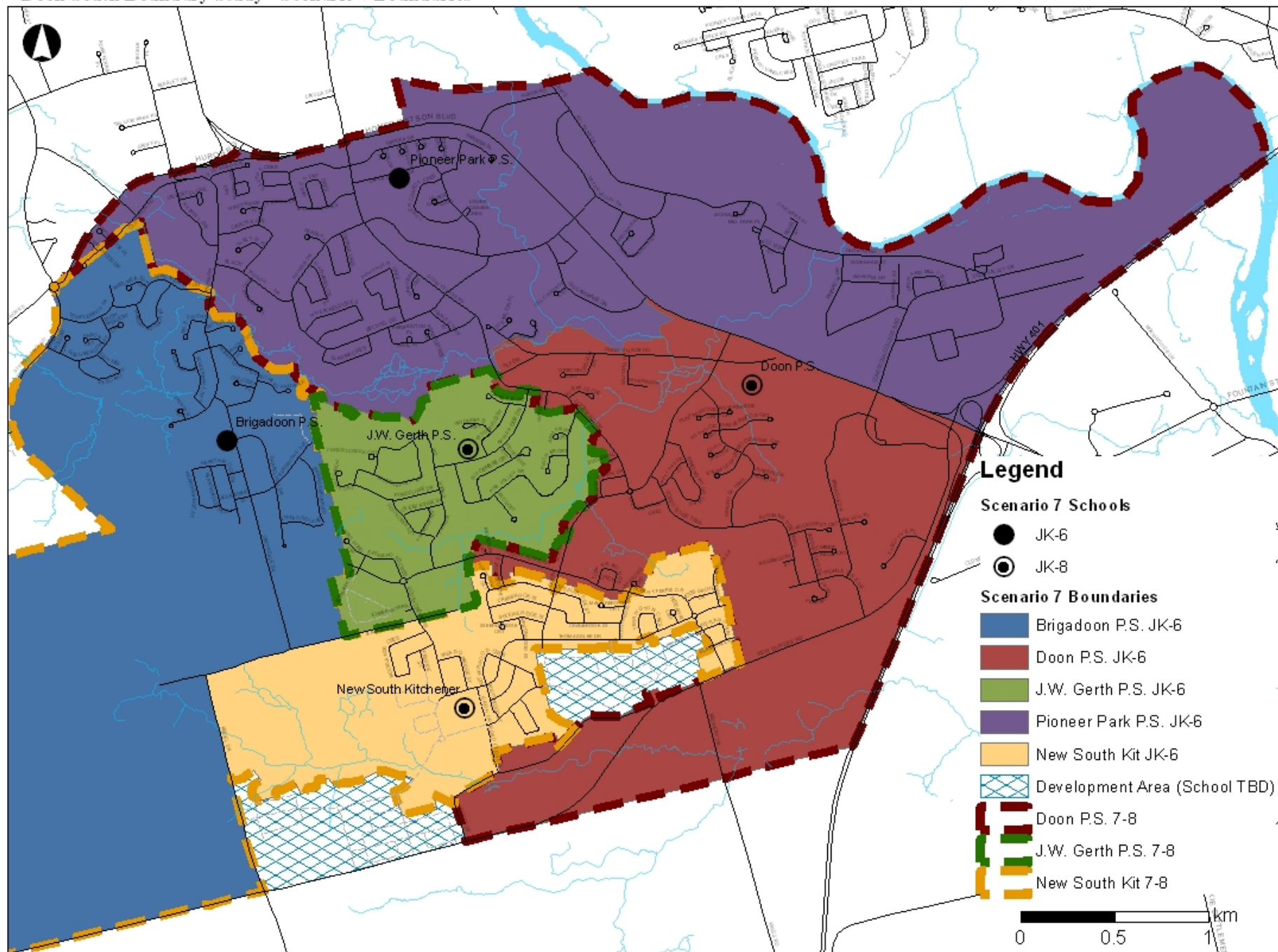


		Scenario 5																				
School	Scenario 5 Grades	2015-2016							2017-2018						2019-2020							
		JK-6	1-6 FI	7-8	7-8 FI	Total	OTG	Temp. Capacity	JK-6	1-6 FI	7-8	7-8 FI	Total	OTG	Temp. Capacity	JK-6	1-6 FI	7-8	7-8 FI	Total	OTG	Temp. Capacity
Brigadoon P.S.	JK-6	250	225			475	421	3	255	215			470	421	3	295	190			485	421	4
Doon P.S.	7-8			290	35	325	331	1			295	80	375	331	4			280	155	435	331	6
J.W. Gerth P.S.	JK-6	425	185			610	536	4	390	225			615	536	4	375	195			570	536	2
Pioneer Park P.S.	JK-6	390				390	308	4	400				400	308	4	400				400	308	4
New School	JK-8	410	25	85	0	520	600		515	75	95	0	685	600	4	525	135	105	0	765	600	7
Development Areas		5		0		5			65		10		75			75		25		200		
Total		1480	435	375	35	2325	2196	12	1625	515	400	80	2620	2196	19	1770	520	410	155	2855	2196	23

Doon South - Scenario 5

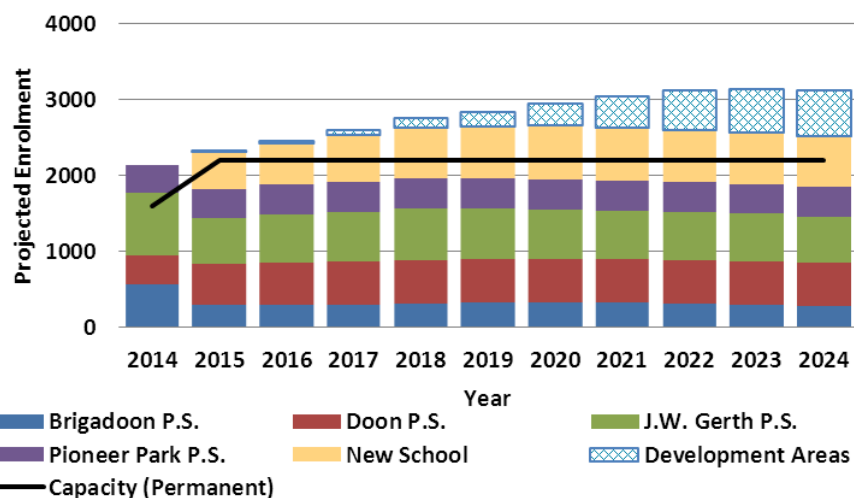


Doon South Boundary Study - Scenario 7 Boundaries

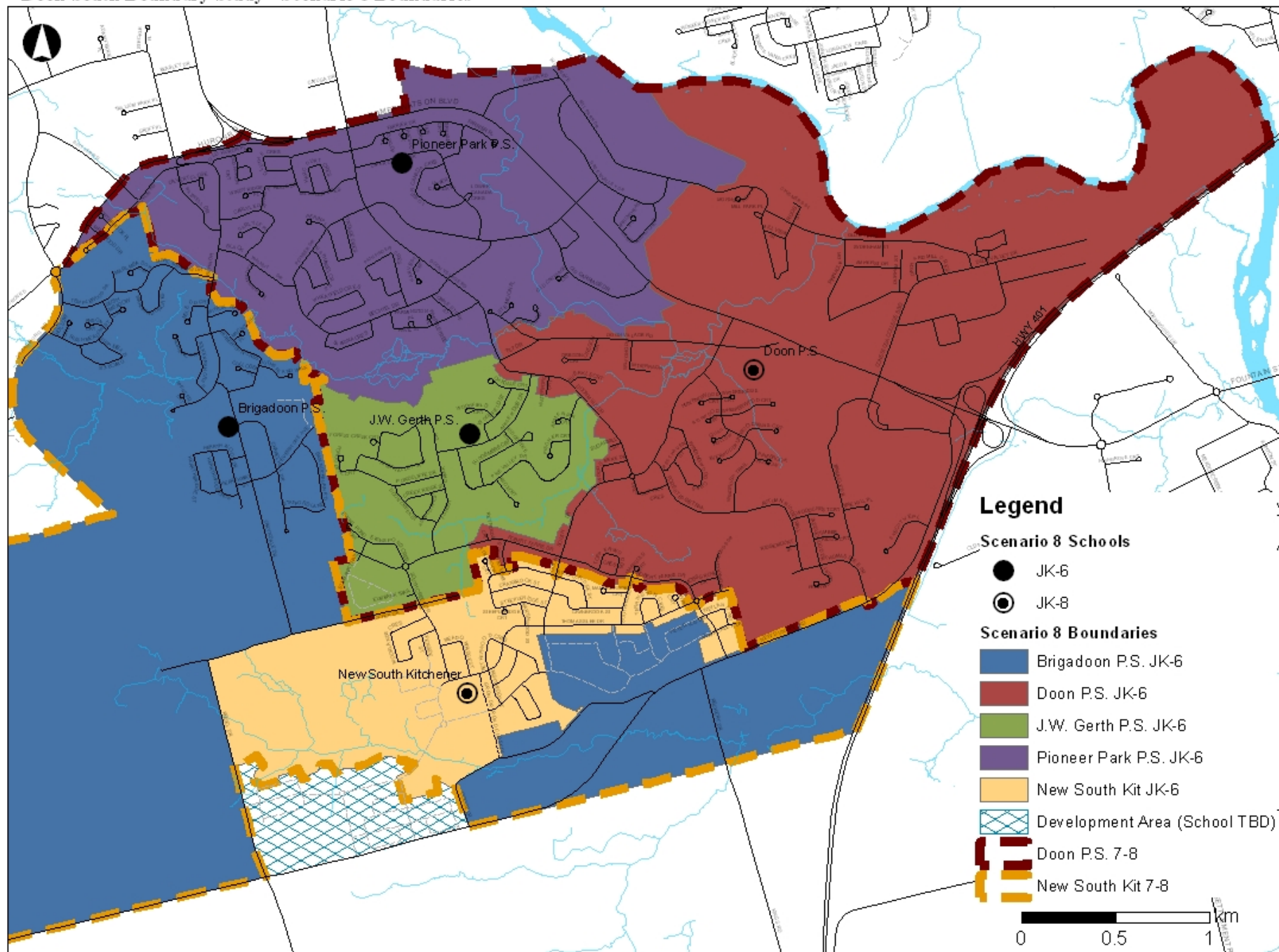


		Scenario 7																				
School	Scenario 7 Grades	2015-2016							2017-2018							2019-2020						
		JK-6	1-6 FI	7-8	7-8 FI	Total	OTG	Temp. Capacity	JK-6	1-6 FI	7-8	7-8 FI	Total	OTG	Temp. Capacity	JK-6	1-6 FI	7-8	7-8 FI	Total	OTG	Temp. Capacity
Brigadoon P.S.	JK-6	150	145			295	421		170	140			310	421		205	120			325	421	
Doon P.S.	JK-8	205	115	195	35	550	331	11	190	125	180	65	560	331	11	190	120	185	85	580	331	12
J.W. Gerth P.S.	JK-8	385	160	55	0	600	536	3	365	200	85	15	665	536	6	350	185	65	70	670	536	6
Pioneer Park P.S.	JK-6	390				390	308	4	400				400	308	4	400				400	308	4
New School	JK-8	340	15	125	0	480	600		440	50	125	0	615	600	1	450	95	135	0	680	600	4
Development Areas		6		0		5			65		10		75			175		25		200		
Total		1475	435	375	35	2320	2196	18	1630	515	400	80	2625	2196	22	1770	520	410	155	2855	2196	26

Doon South - Scenario 7



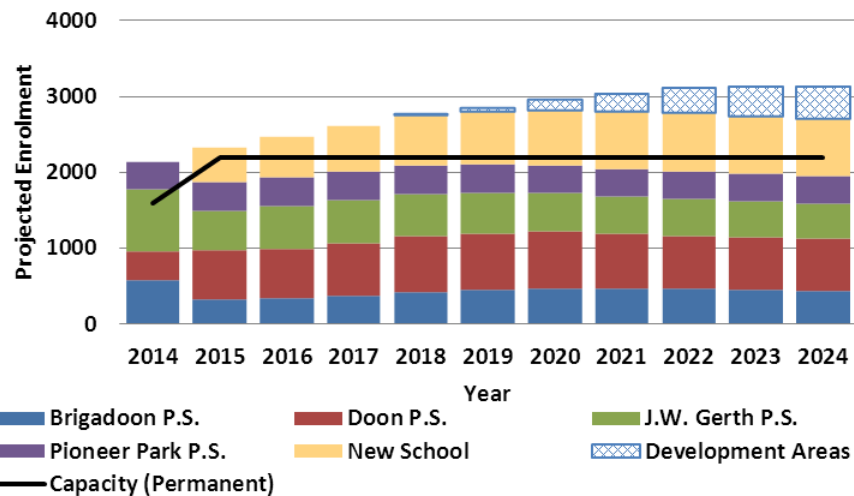
Doon South Boundary Study - Scenario 8 Boundaries



Scenario 8

		Scenario 8																				
School	Scenario 8 Grades	2015-2016							2017-2018							2019-2020						
		JK-6	1-6 FI	7-8	7-8 FI	Total	OTG	Temp. Capacity	JK-6	1-6 FI	7-8	7-8 FI	Total	OTG	Temp. Capacity	JK-6	1-6 FI	7-8	7-8 FI	Total	OTG	Temp. Capacity
Brigadoon P.S.	JK-6	160	160			320	421		225	140			365	421		315	130			445	421	
Doon P.S.	JK-8	250	100	255	35	640	331	15	225	125	270	80	700	331	17	220	125	250	155	750	331	20
J.W. Gerth P.S.	JK-6	380	155			535	536		365	200			565	536	1	350	185			535	536	
Pioneer Park P.S.	JK-6	370				370	308	3	375				375	308	3	375				375	308	3
New School	JK-8	325	15	125	0	465	600		425	55	125	0	605	600	1	445	100	150	0	695	600	4
Development Areas	0	0	0	0	0	0	0	0	0	0	0	0	0	0	0	50	5	5	5	55	0	0
Total		1485	430	380	35	2330	2196	18	1615	520	395	80	2610	2196	22	1755	540	405	155	2855	2196	27

Doon South - Scenario 8



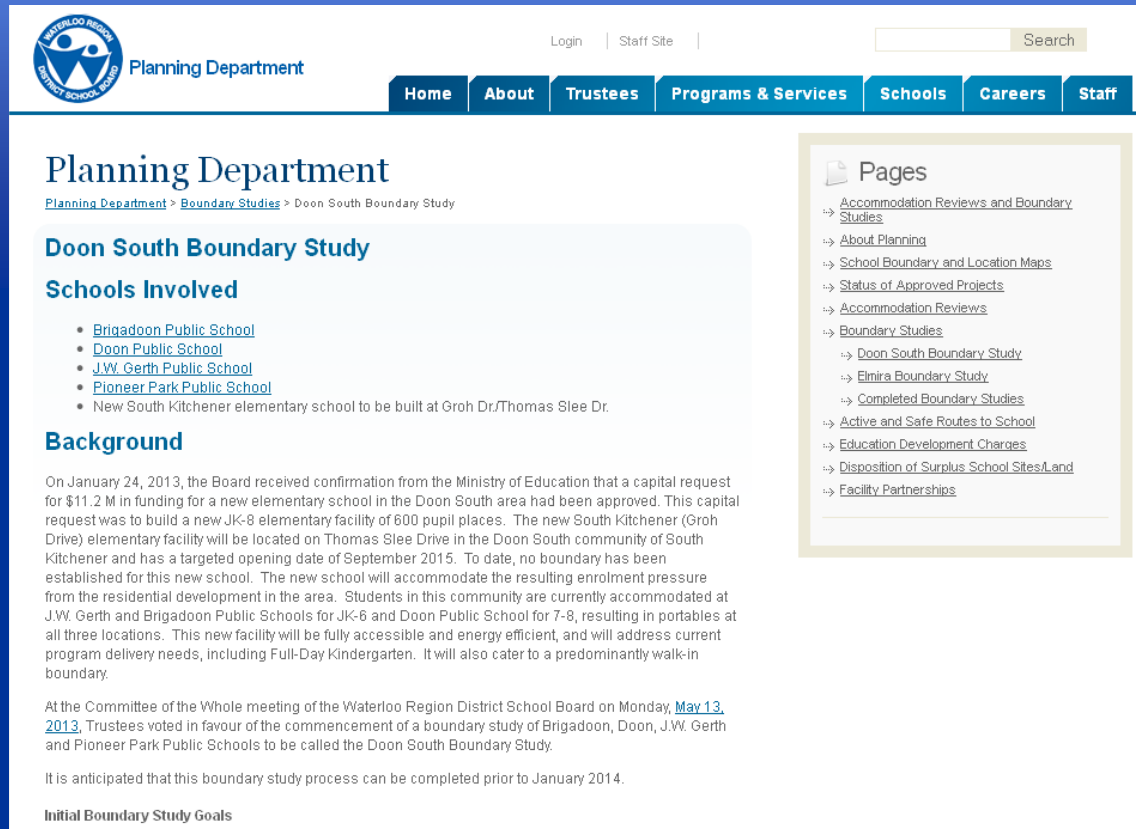
Next Steps

- Working Group reviews public meeting comments
- Working Group refines scenarios based on public feedback
- A minimum of 1 additional Public Meeting
- Working Group to develop recommendations
- Staff bring recommendations to Trustees
- Trustees vote on recommendations



Webpage

<http://www.wrdsb.ca/planning/boundary-studies/boundary-studiesdoon-south-boundary-study/>



The screenshot shows the website for the Waterloo Region District School Board Planning Department. The header includes the logo, "Planning Department", and navigation links: Home, About, Trustees, Programs & Services, Schools, Careers, and Staff. A search bar is also present. The main content area is titled "Planning Department" and "Doon South Boundary Study". It lists "Schools Involved" with links to Brigadoon Public School, Doon Public School, J.W. Gerth Public School, and Pioneer Park Public School, plus a note about a new school at Groh Dr/Thomas Slee Dr. A "Background" section describes the capital request for a new elementary school in the Doon South area, approved in 2013. It mentions the targeted opening date of September 2015 and the current accommodation of students at three locations. A "Initial Boundary Study Goals" section is also visible.

Planning Department
Login | Staff Site | Search

Home About Trustees Programs & Services Schools Careers Staff

Planning Department

[Planning Department](#) > [Boundary Studies](#) > Doon South Boundary Study

Doon South Boundary Study

Schools Involved

- [Brigadoon Public School](#)
- [Doon Public School](#)
- [J.W. Gerth Public School](#)
- [Pioneer Park Public School](#)
- New South Kitchener elementary school to be built at Groh Dr/Thomas Slee Dr.

Background

On January 24, 2013, the Board received confirmation from the Ministry of Education that a capital request for \$11.2 M in funding for a new elementary school in the Doon South area had been approved. This capital request was to build a new JK-8 elementary facility of 600 pupil places. The new South Kitchener (Groh Drive) elementary facility will be located on Thomas Slee Drive in the Doon South community of South Kitchener and has a targeted opening date of September 2015. To date, no boundary has been established for this new school. The new school will accommodate the resulting enrolment pressure from the residential development in the area. Students in this community are currently accommodated at J.W. Gerth and Brigadoon Public Schools for JK-6 and Doon Public School for 7-8, resulting in portables at all three locations. This new facility will be fully accessible and energy efficient, and will address current program delivery needs, including Full-Day Kindergarten. It will also cater to a predominantly walk-in boundary.

At the Committee of the Whole meeting of the Waterloo Region District School Board on Monday, [May 13, 2013](#), Trustees voted in favour of the commencement of a boundary study of Brigadoon, Doon, J.W. Gerth and Pioneer Park Public Schools to be called the Doon South Boundary Study.

It is anticipated that this boundary study process can be completed prior to January 2014.

Initial Boundary Study Goals

Pages

- [Accommodation Reviews and Boundary Studies](#)
- [About Planning](#)
- [School Boundary and Location Maps](#)
- [Status of Approved Projects](#)
- [Accommodation Reviews](#)
- [Boundary Studies](#)
 - [Doon South Boundary Study](#)
 - [Elmira Boundary Study](#)
 - [Completed Boundary Studies](#)
- [Active and Safe Routes to School](#)
- [Education Development Charges](#)
- [Disposition of Surplus School Sites/Land](#)
- [Facility Partnerships](#)

Browse:

- Working Group meeting Agendas, Presentations and Minutes
- Public Meeting Notices, Agendas and Minutes
- Resource Materials and Maps



**Waterloo Region
District School Board**

Contact Information

- Website: www.wrdsb.ca
 - About
 - Planning
 - Boundary Studies
 - Doon South Boundary Study

- E-mail: boundaryfeedback@wrdsb.on.ca

- Phone: 519-570-0003 ext. 4419



Thank you!

Questions or Comments?

