

Doon South

Elementary Schools Boundary Study

Public Meeting #2

December 5, 2013

Doon P.S. 7:00 p.m.



Agenda

Doon South

Elementary Schools Boundary Study

Public Meeting #2

1. Welcome/Introductions
2. Update on the Boundary Study Process
3. Scenarios
 - i. Scenario 14
 - ii. Scenario 16
4. Interim Options
 - i. Interim Option F
5. Next Steps
6. Questions/Other



What is a Boundary Study?

- a public process that ensures a decision made by a school board regarding the realignment of attendance boundaries has the involvement of an informed local community



Reasons for the Doon Boundary Study

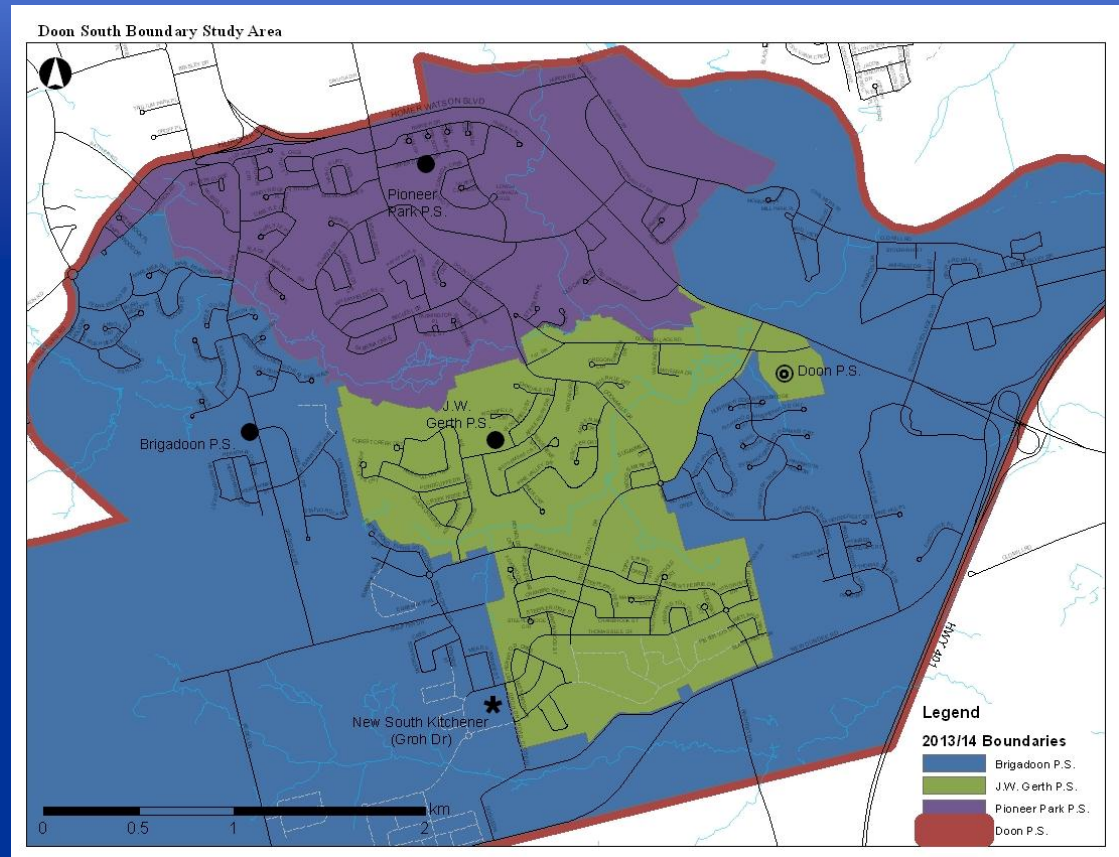
- Establish a boundary for the new South Kitchener (Groh Drive) school
- Address overcrowding at Brigadoon, J.W. Gerth and Pioneer Park Public Schools



Study Area

■ The Doon South Study Area includes:

- Brigadoon P.S.
 - JK-6
- Doon P.S. P.S.
 - 7-8
- J.W. Gerth P.S.
 - JK-6
- Pioneer Park P.S.
 - JK-6
- New South Kit.
 - JK-8



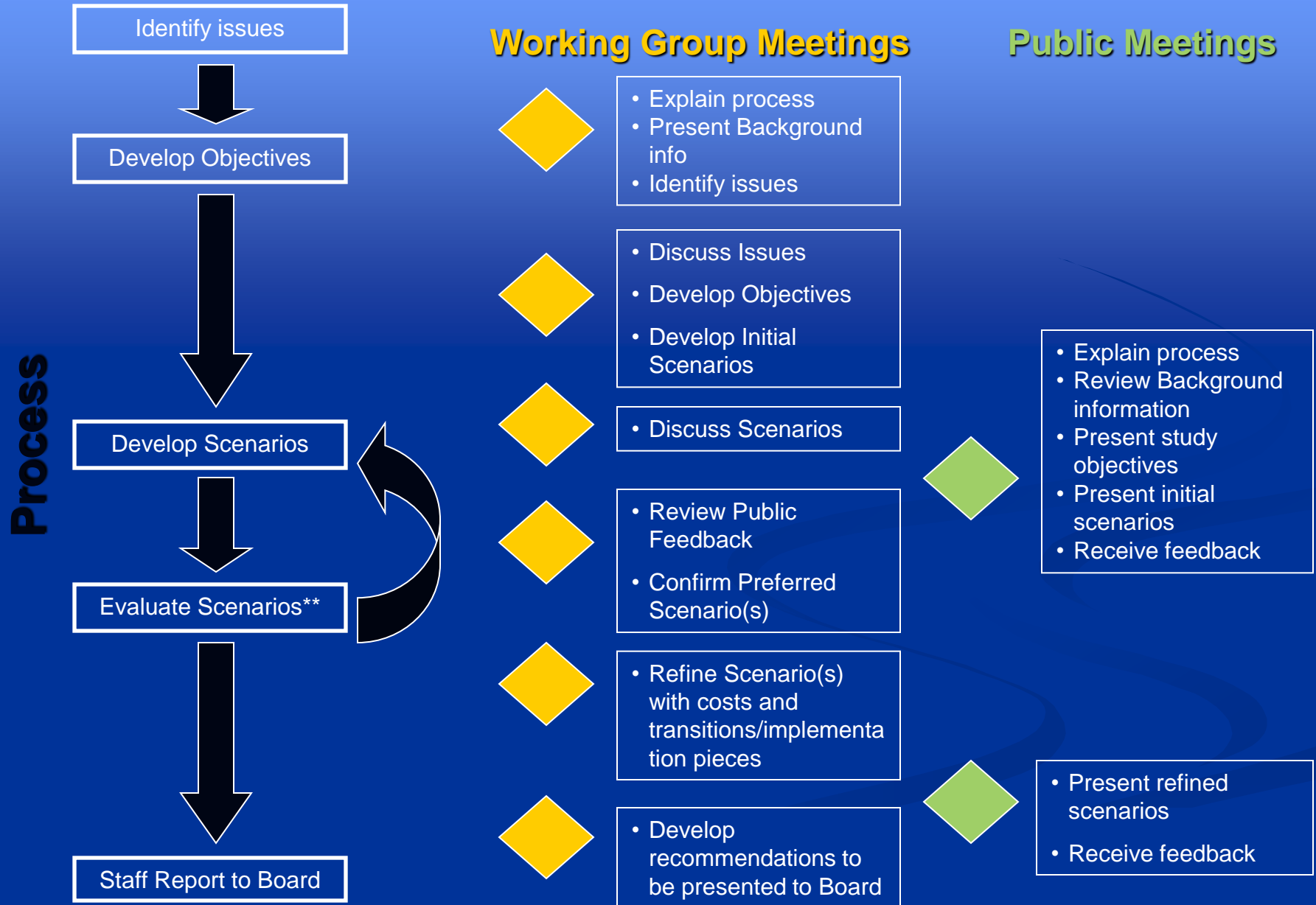
School Size (Enrolment and Capacity)

School	Grades	Unofficial Enrolment – October 31, 2013		2013 Capacity (based on Ministry loading)	Portables	Year Built	Site Size (acres)
		Total	FTE				
Brigadoon P.S.	JK-6	530	479	383	6	1992	9.37
Doon P.S.	7-8	336	336	331	3	1957	13.42
J.W. Gerth P.S.	JK-6	715	715	494	9	2007	4.99
Pioneer Park P.S.	JK-6	369	369	290	4	1977	6.07
Total		1950	1899	1498	22		33.85

*Calculated using Ministry of Education's loading of rooms in the school (capacity does not include future additions for Full-Day Kindergarten)
FTE refers to Full-Time Equivalent – Kindergarten students in alternate day program only occupy space in the school ½ the time



Boundary Study Process



**Scenario development and evaluation may go through multiple iterations as scenarios are evaluated , and new ideas result from the evaluation.

Timeline

2013

2014



Note: No boundary changes would be implemented prior to September 2014



Scenarios Presented at Public Meeting #1

■ Scenario 5

- New School JK-8 (no feeder school)
- Doon P.S. remains 7-8 school for Brigadoon, J.W. Gerth and Pioneer Park Public Schools
- Boundary changes for all schools

■ Scenario 7

- New School JK-8 (Brigadoon P.S. feeder school for 7-8)
- Doon P.S. becomes JK-8 (J.W. Gerth P.S. and Pioneer Park P.S. feeder schools for 7-8)
- Boundary changes for all schools but Pioneer Park P.S.

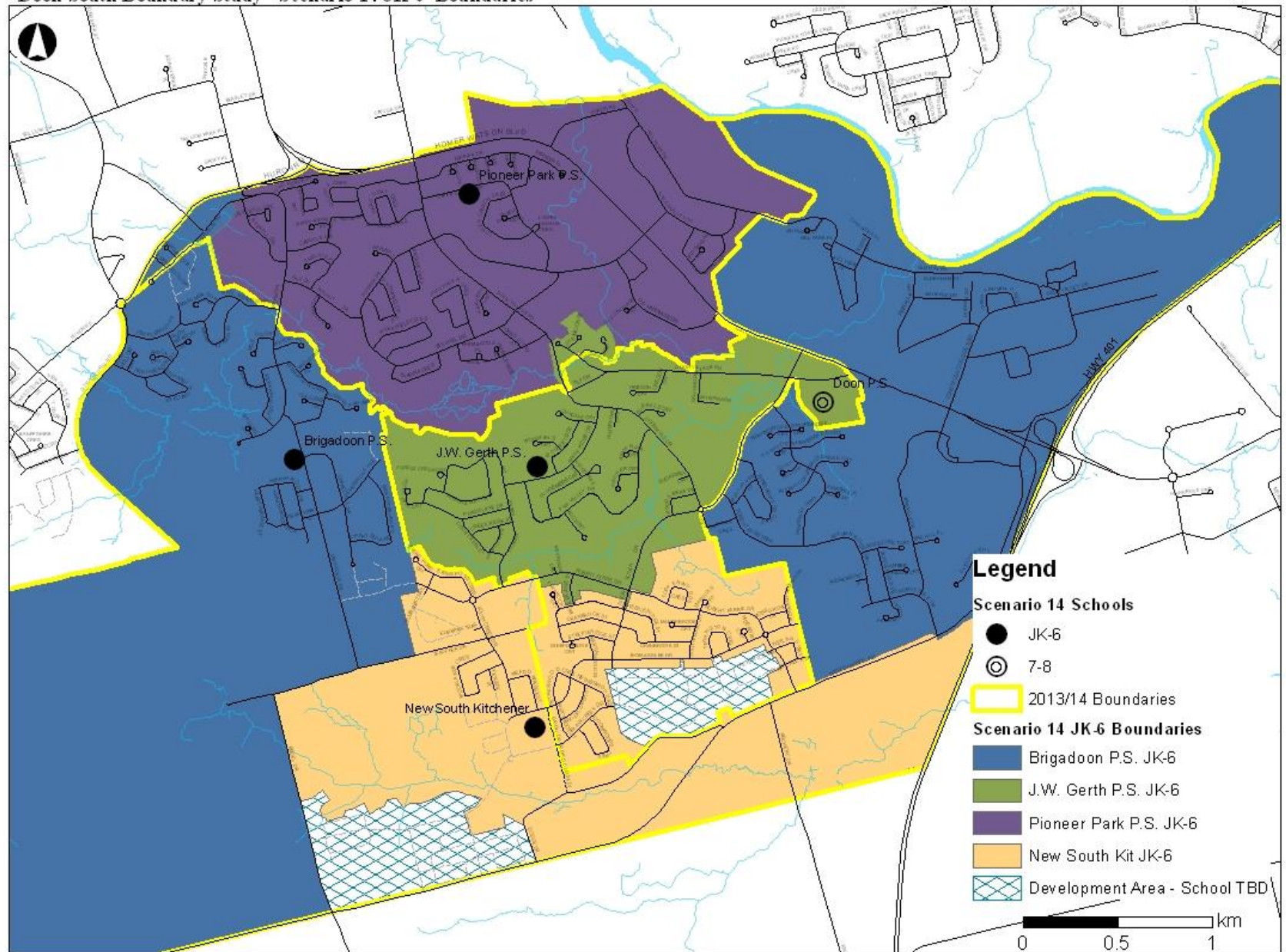
■ Scenario 8

- New School JK-8 (Brigadoon P.S. feeder school for 7-8)
- Doon P.S. becomes JK-8 (J.W. Gerth P.S. and Pioneer Park P.S. feeder schools for 7-8)
- Boundary changes for all schools but Pioneer Park P.S.



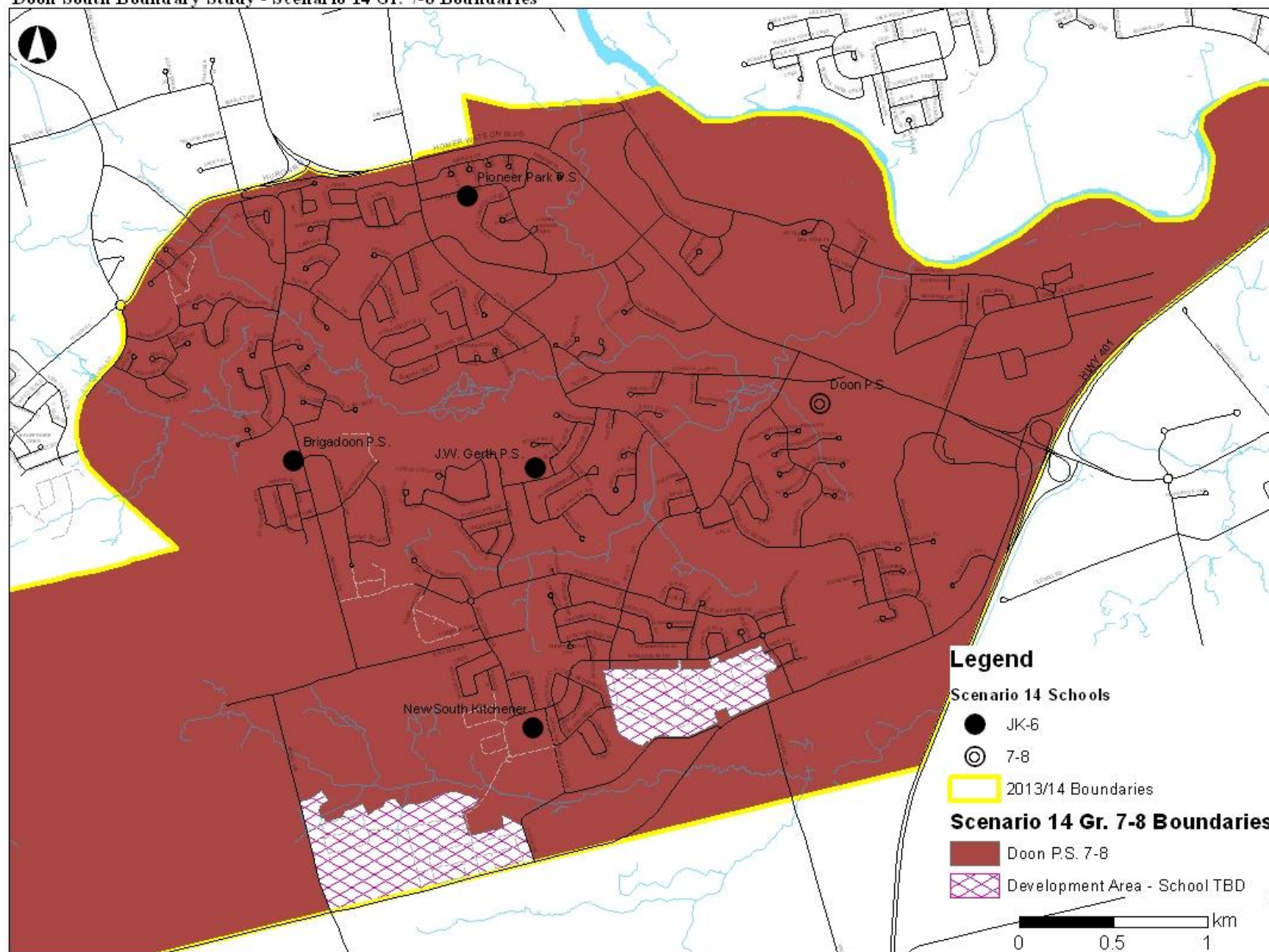
Scenario 14 – JK-6 Boundaries

Doon South Boundary Study - Scenario 14 JK-6 Boundaries



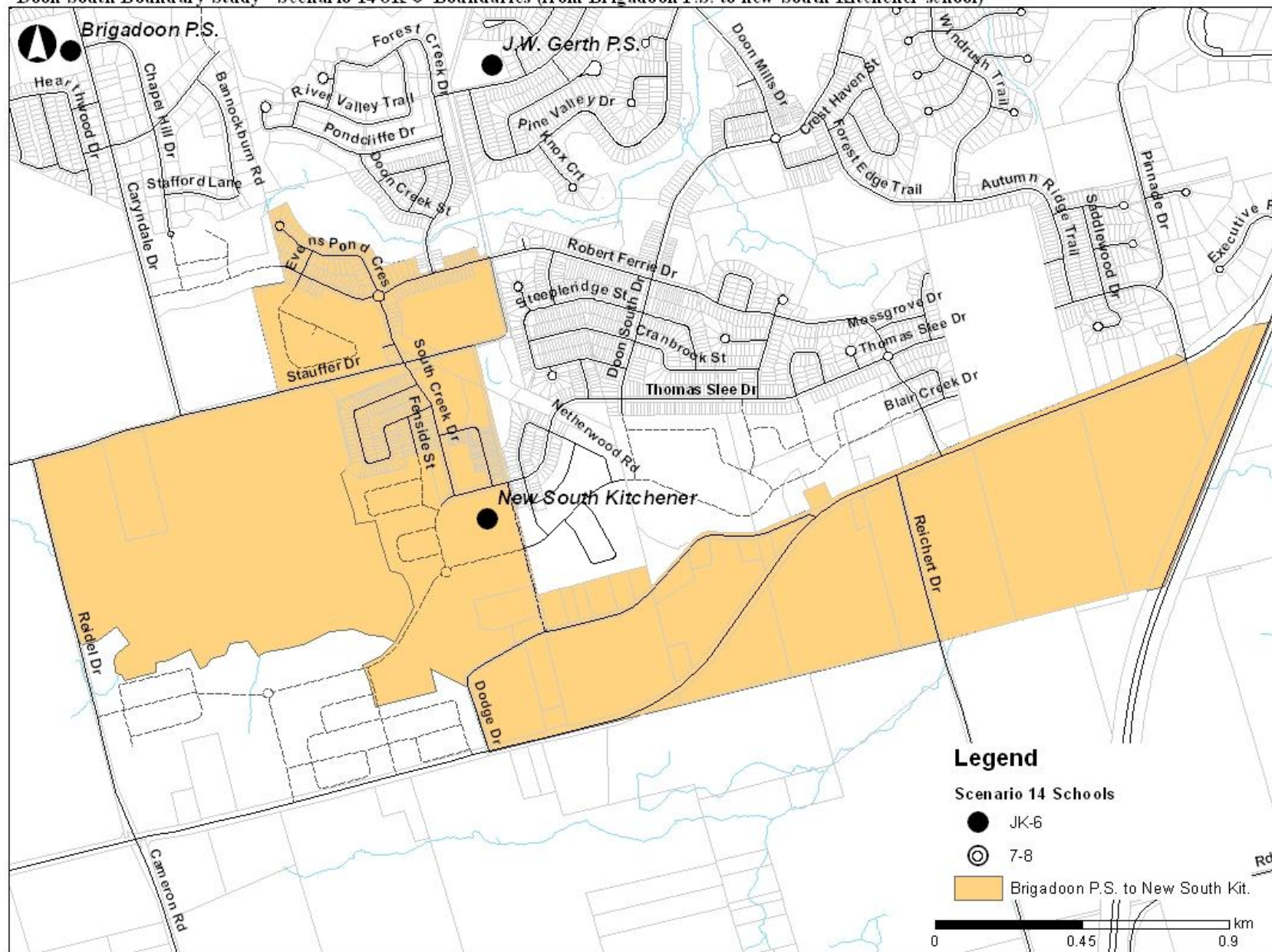
Scenario 14 – 7-8 Boundaries

Doon South Boundary Study - Scenario 14 Gr. 7-8 Boundaries



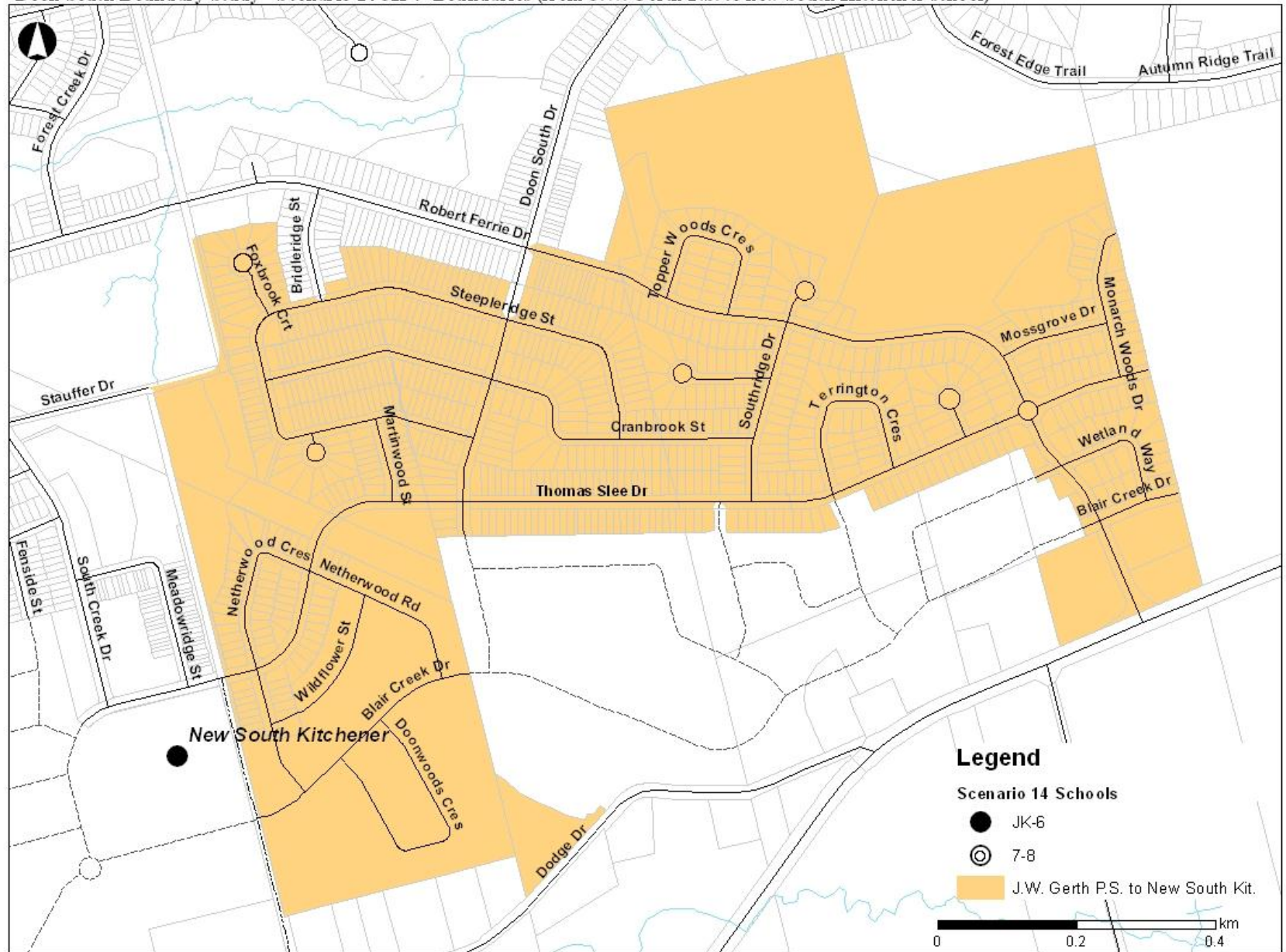
Scenario 14 – From Brigadoon P.S. to new South Kit.

Doon South Boundary Study - Scenario 14 JK-6 Boundaries (from Brigadoon P.S. to new South Kitchener school)



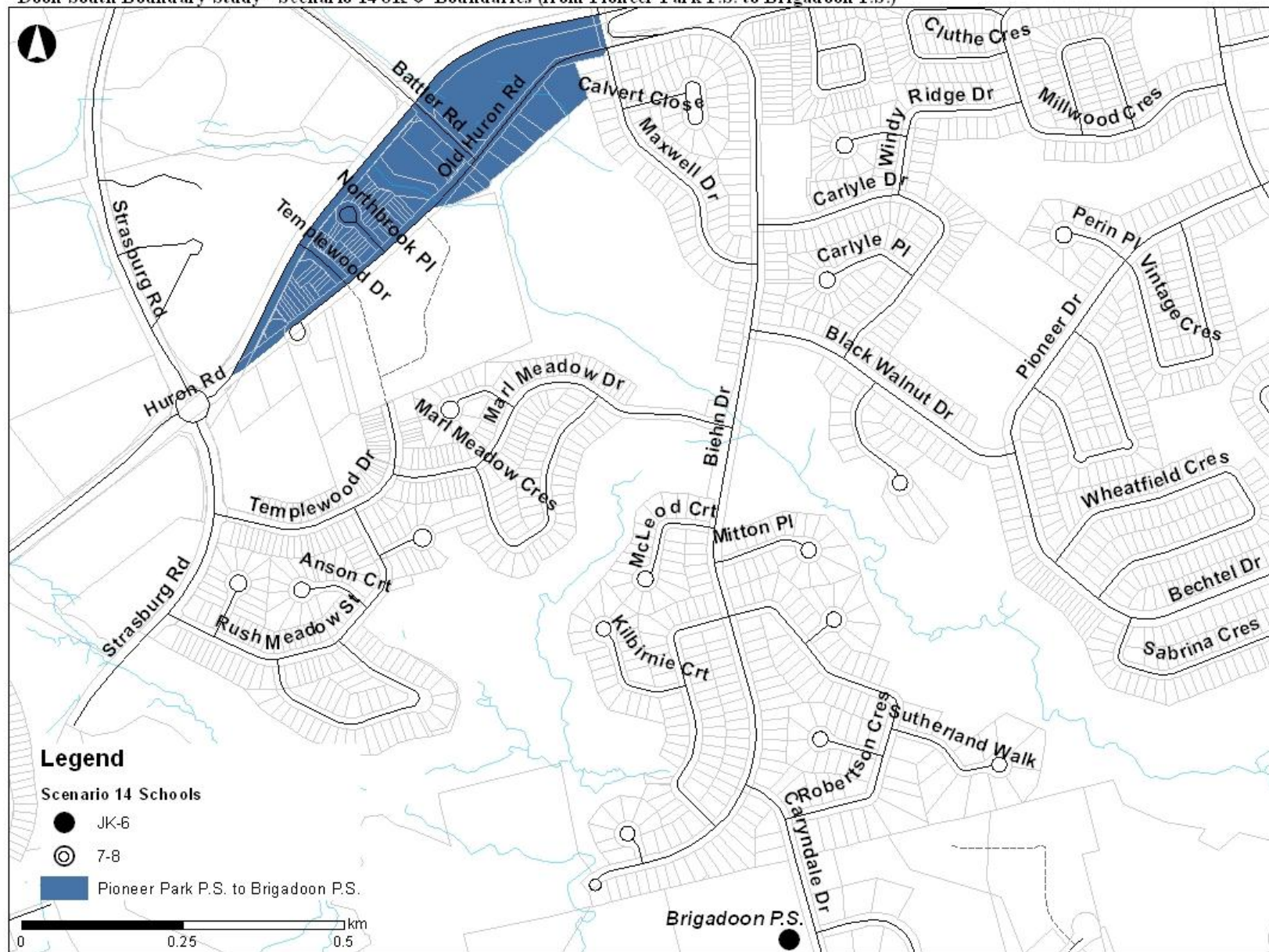
Scenario 14 – From J.W. Gerth P.S. to new South Kit.

Doon South Boundary Study - Scenario 14 JK-6 Boundaries (from J.W. Gerth P.S. to new South Kitchener school)



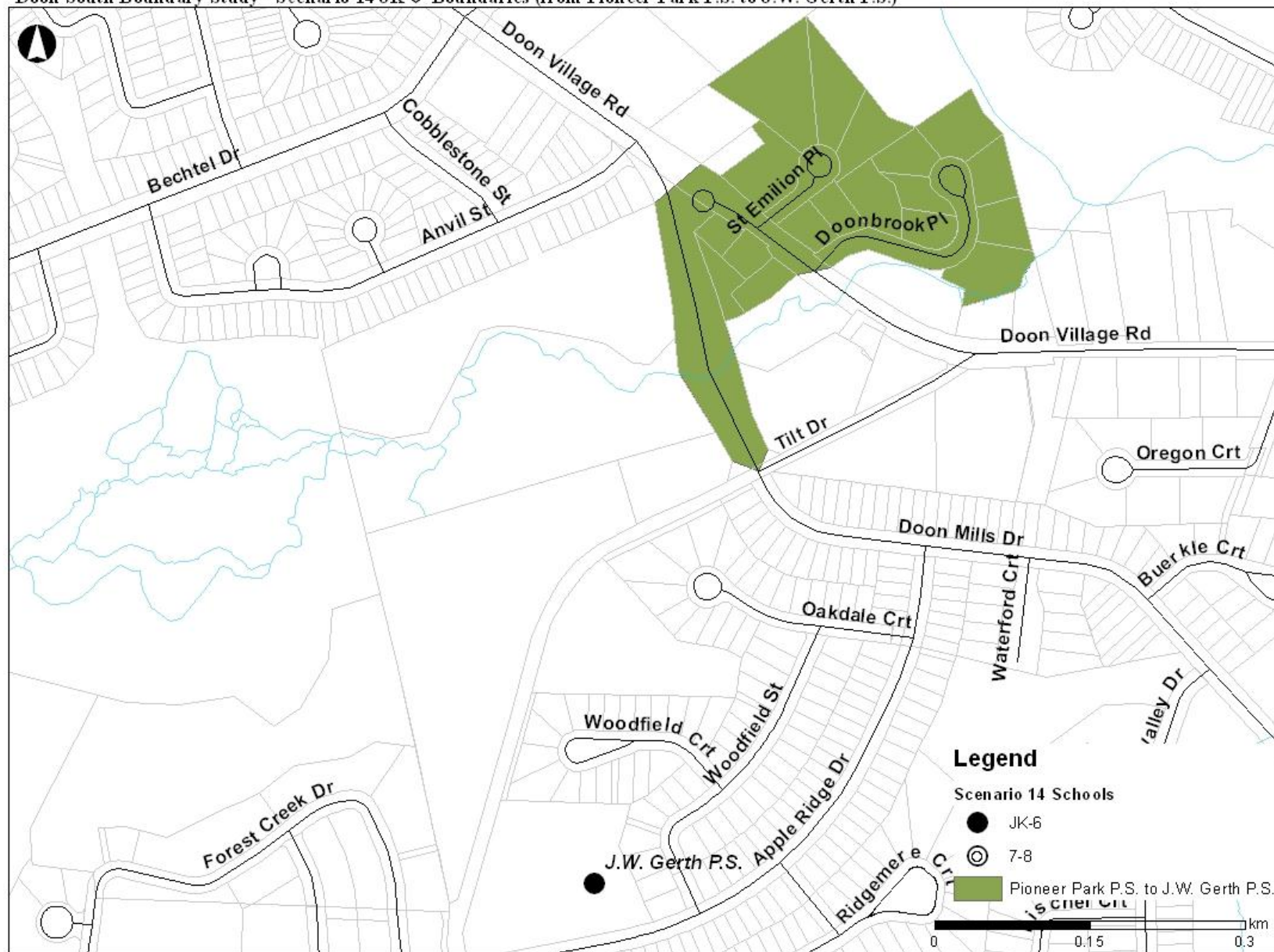
Scenario 14 – From Pioneer Park P.S. to Brigadoon P.S.

Doon South Boundary Study - Scenario 14 JK-6 Boundaries (from Pioneer Park P.S. to Brigadoon P.S.)



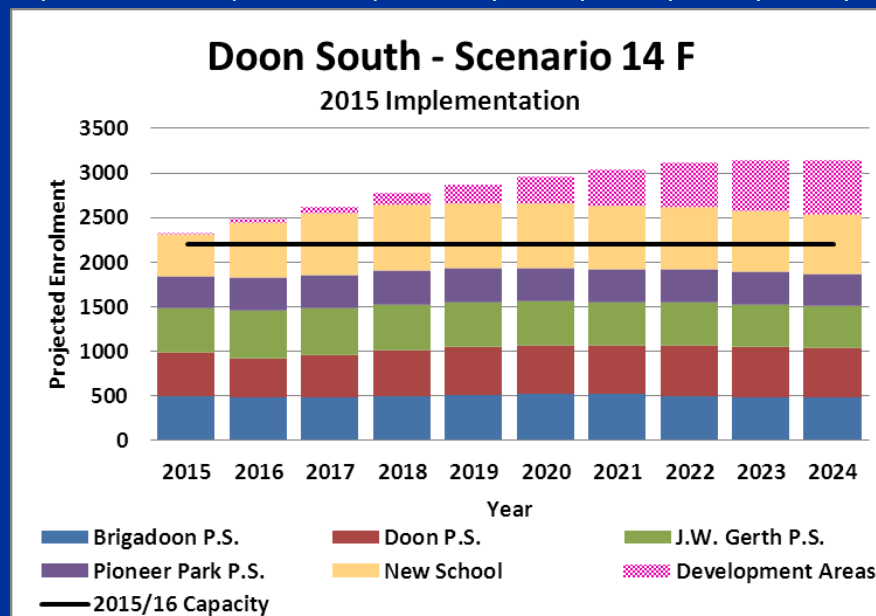
Scenario 14 – From Pioneer Park P.S. to J.W. Gerth P.S.

Doon South Boundary Study - Scenario 14 JK-6 Boundaries (from Pioneer Park P.S. to J.W. Gerth P.S.)



Scenario 14F (2015 Implementation)

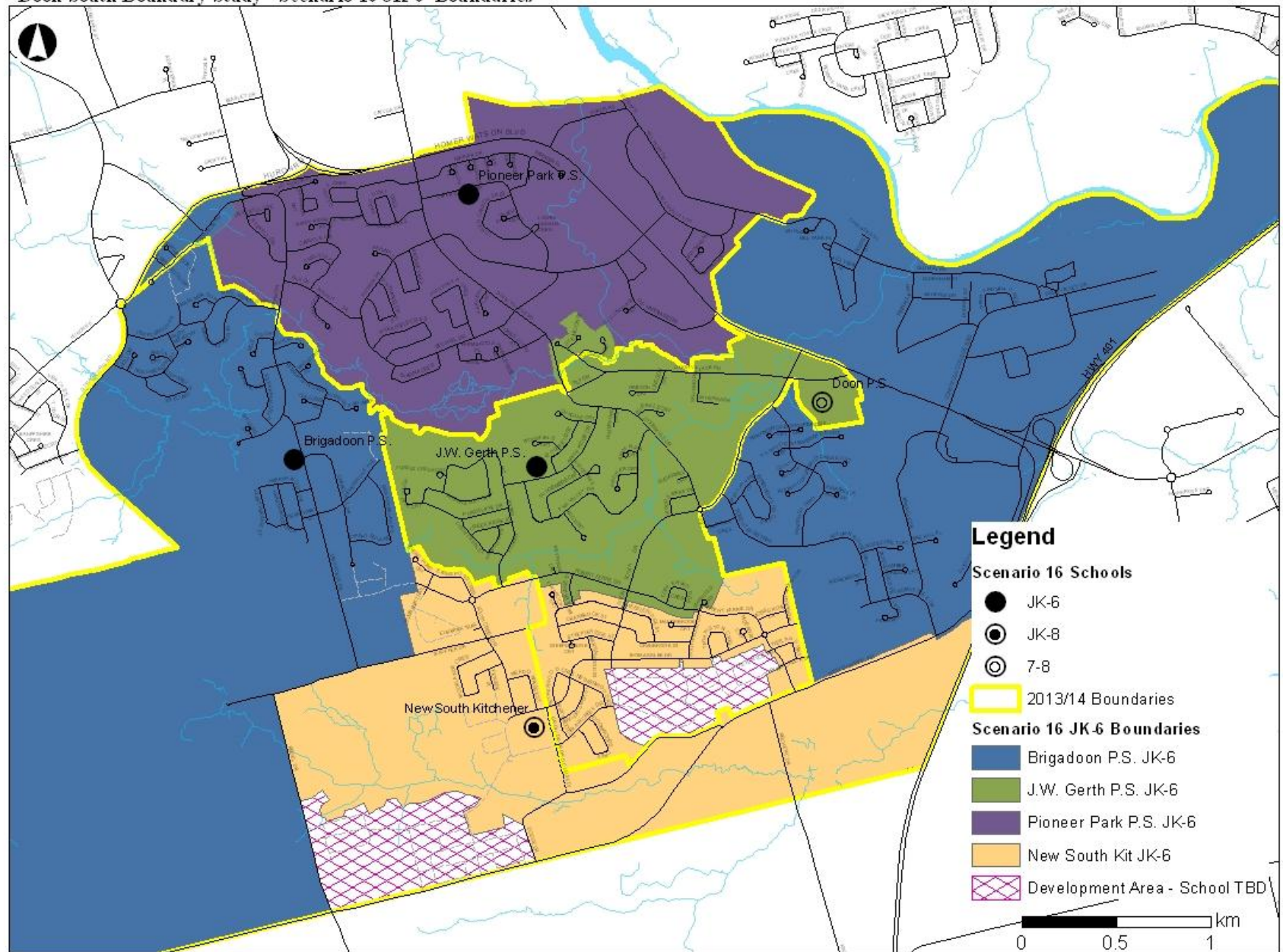
School	2015/16 Capacity	New Capacity (requires approval)	Total Capacity Required	Grades	Year									
					2015	2016	2017	2018	2019	2020	2021	2022	2023	2024
Brigadoon P.S.	421	46	467	JK-6	505	495	495	505	520	530	525	510	495	485
Doon P.S.	331	230	561	7-8	490	425	470	515	535	540	545	560	560	555
J.W. Gerth P.S.	536		536	JK-6	490	540	520	510	500	495	485	485	480	475
Pioneer Park P.S.	308	46	354	JK-6	360	375	370	375	375	370	365	365	360	360
New School	600	46	646	JK-6	470	620	695	735	735	730	715	695	680	665
Development Areas					5	30	70	135	200	295	410	510	570	600
Total	2196		2564		2330	2480	2620	2775	2860	2965	3050	3125	3145	3140



Scenario 14 - Objectives	Met?	Notes
• To establish a boundary for the new South Kitchener Groh Drive elementary school	<input checked="" type="checkbox"/>	- Boundary implementation date dependant on school opening date
• To increase the number of students housed in permanent accommodation in a cost-effective way	<input checked="" type="checkbox"/>	- 10 classroom addition at Doon P.S. - 2 classroom additions at Brigadoon P.S. and Pioneer Park P.S. and New South Kitchener school - Approx. cost \$7M
• To provide equitable learning opportunities for students and staff by moving towards the following criteria (<i>from Board Policy 3002</i>):		
• JK-6 facilities between 350 and 400 students (approx. 2 classes/grade)	<input checked="" type="checkbox"/>	- No schools under 350 pupils - Schools with FI classes warrant larger organizations (400+ students)
• JK-8 facilities between 500 and 650 students (approx. 2 classes/grade JK-6, 2+ classes/grade 7-8)	N/A	- No JK-8 facilities proposed
• Minimizing the potential for schools with enrolments over 650 students	<input checked="" type="checkbox"/>	- New South Kitchener School is just over 650 students in the long-term
• To increase the number of students within walking distance to their assigned school (<1.6 km)	<input checked="" type="checkbox"/>	- More JK-6 students within walking distance
• To establish boundaries around "Development Areas" where proposed plans of subdivision are temporarily assigned to holding schools until a permanent accommodation solution can be determined	<input checked="" type="checkbox"/>	- Stages 4-8 of Aactiva Holdings Inc. 30T-08203 plan school TBD - All stages of Monarch Corp. 30T-07204 plan school TBD - Stage 1B of Monarch Corp. 30T-07202 plan school TBD
• To develop an interim (temporary) accommodation strategy, beginning in September 2014, to assist schools with increasing enrolment until such time as the new South Kitchener Groh Drive school is open	<input checked="" type="checkbox"/>	- Interim Option F

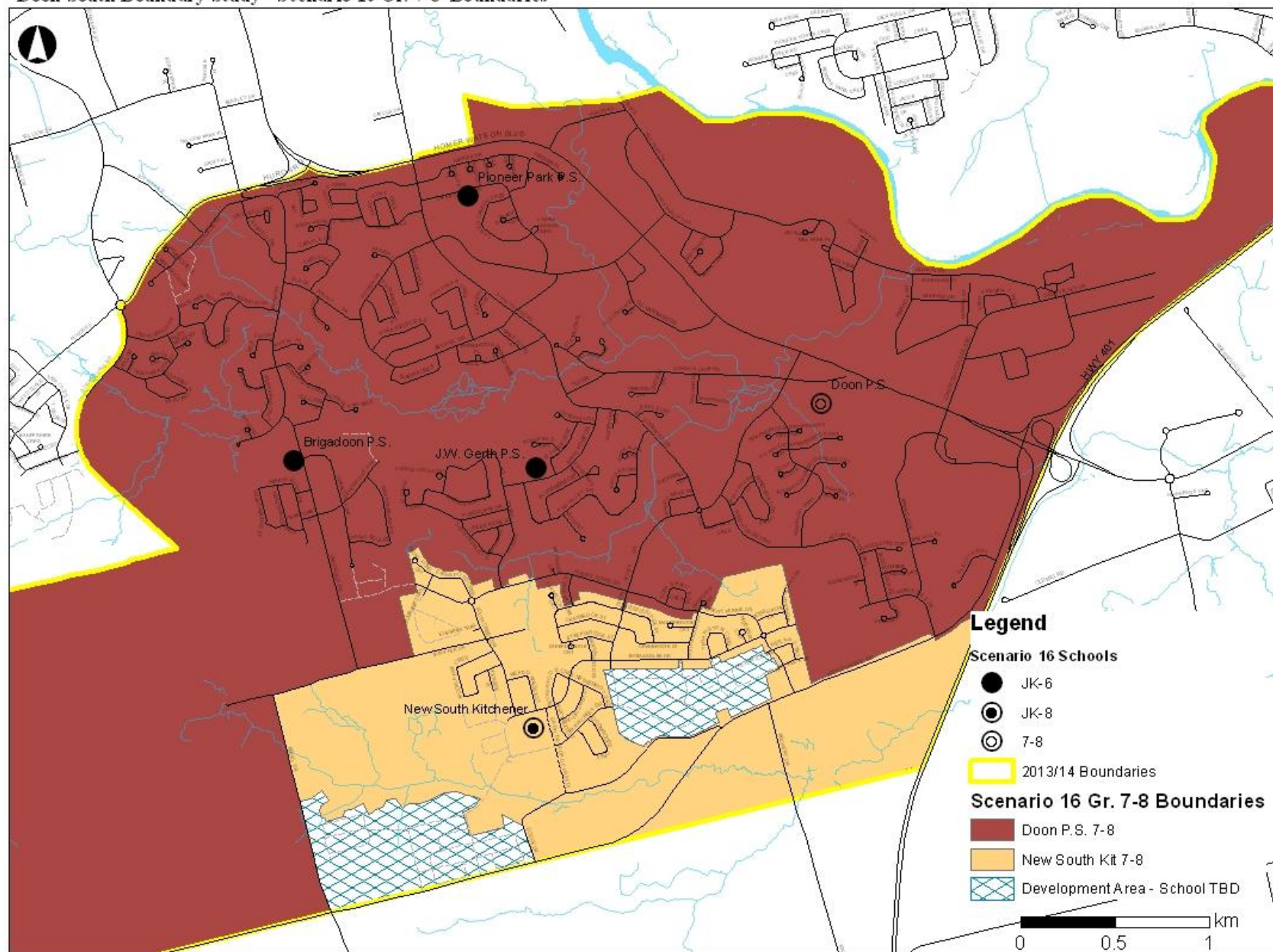
Scenario 16 – JK-6 Boundaries

Doon South Boundary Study - Scenario 16 JK-6 Boundaries



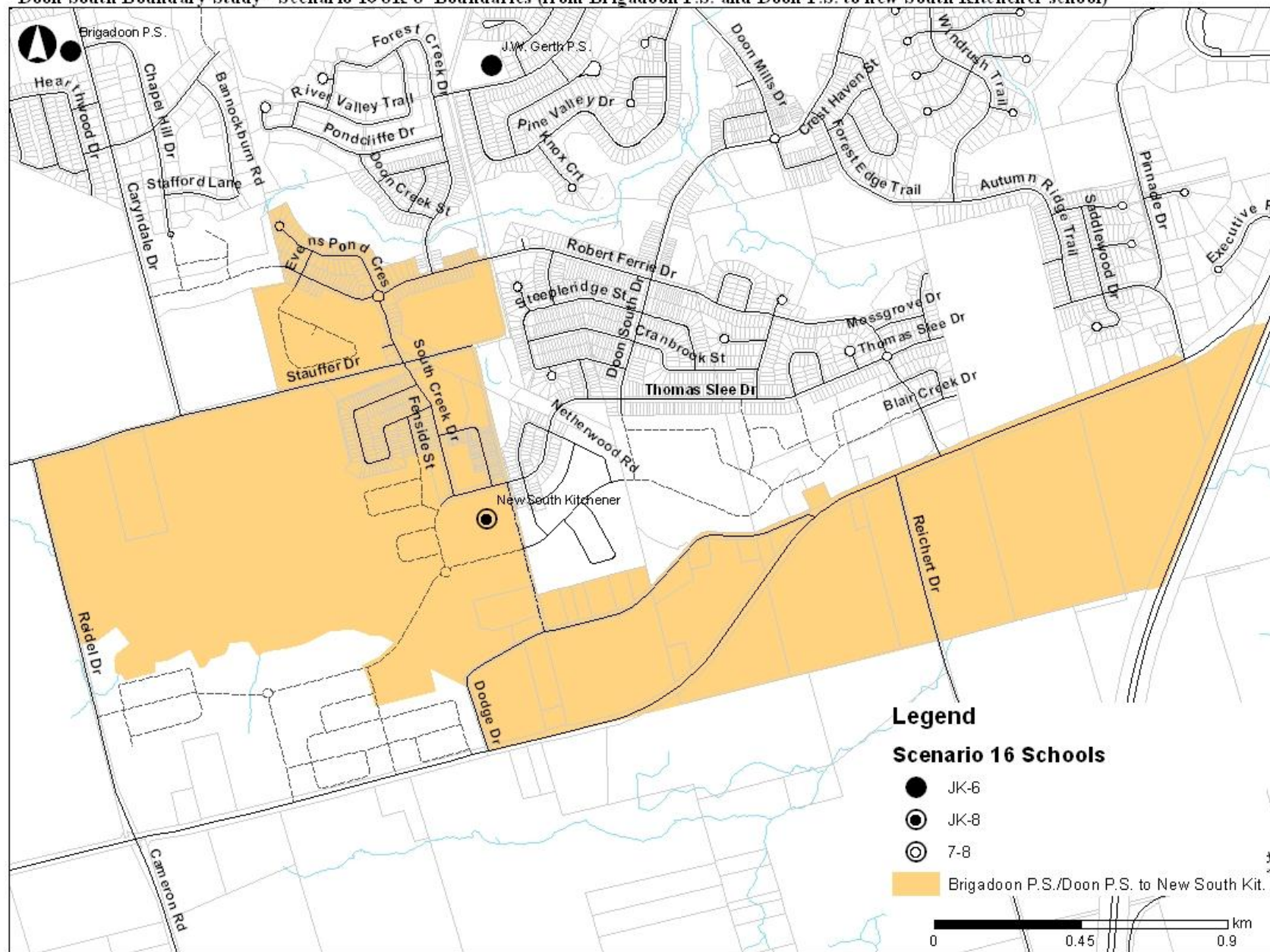
Scenario 16 – 7-8 Boundaries

Doon South Boundary Study - Scenario 16 Gr. 7-8 Boundaries



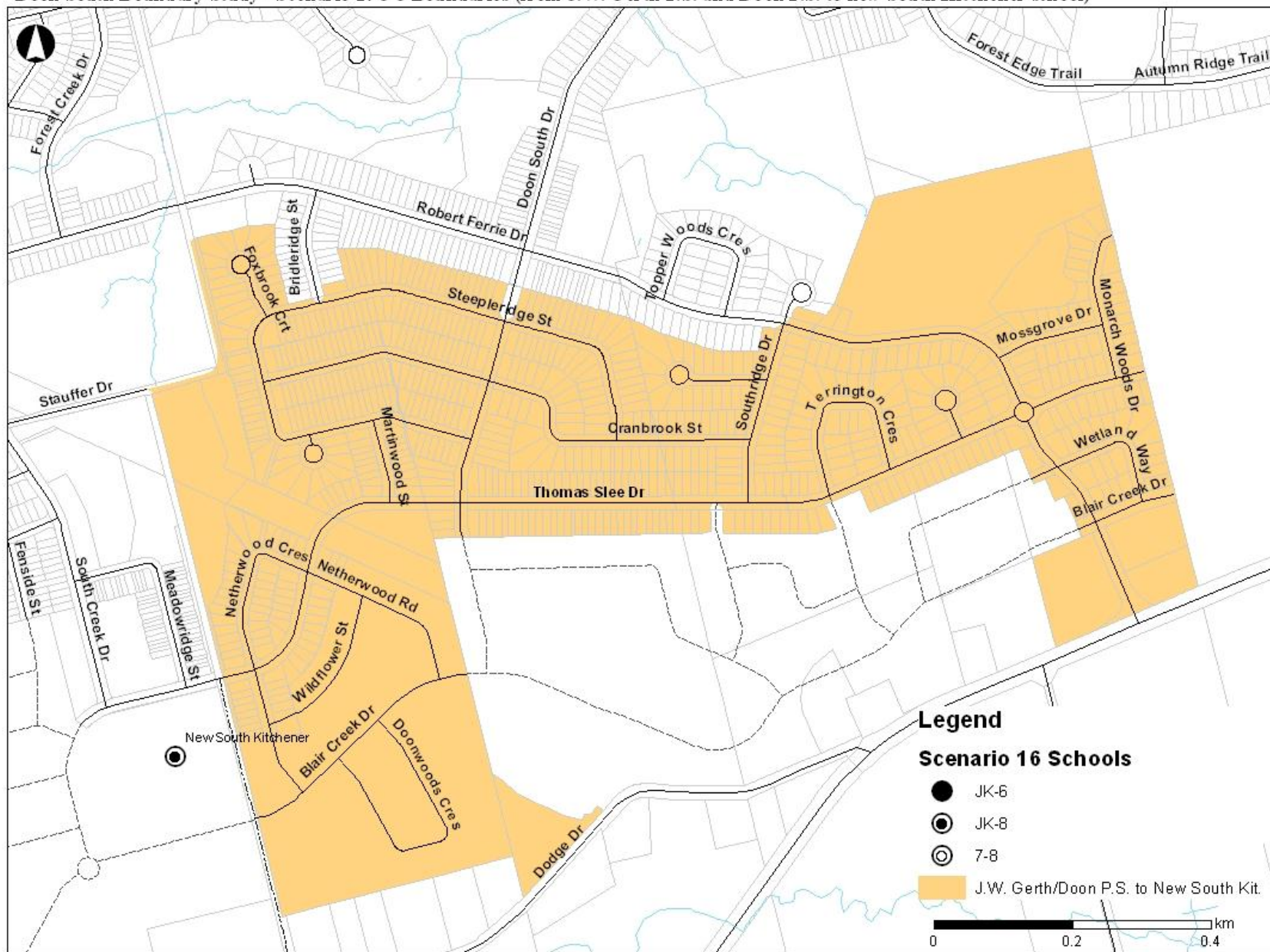
Scenario 16 – From Brigadoon/Doon P.S. to new South Kit.

Doon South Boundary Study - Scenario 16 JK-8 Boundaries (from Brigadoon P.S. and Doon P.S. to new South Kitchener school)



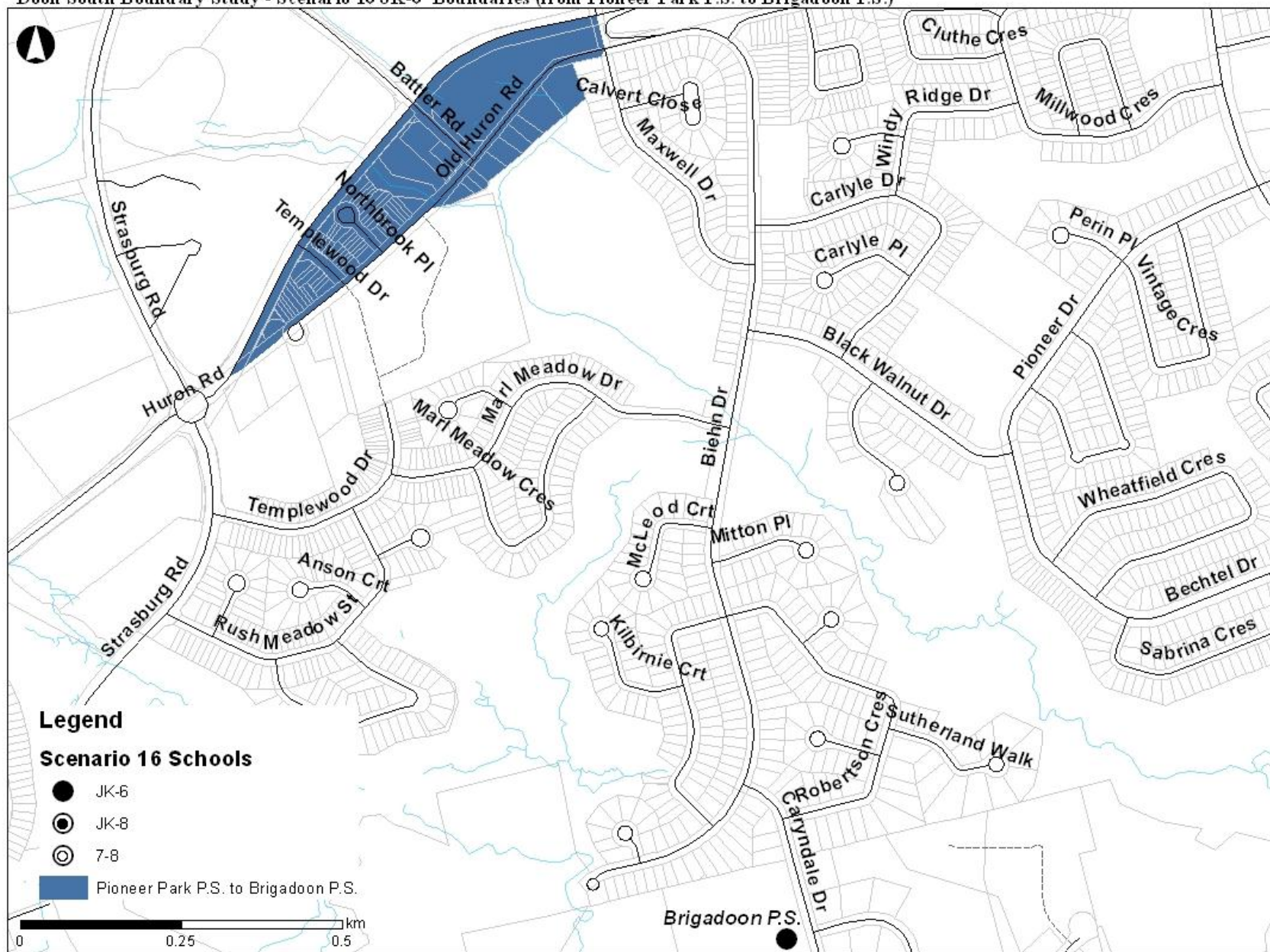
Scenario 16 – From J.W. Gerth/Doon P.S. to new South Kit.

Doon South Boundary Study - Scenario 16 J-8 Boundaries (from J.W. Gerth P.S. and Doon P.S. to new South Kitchener school)



Scenario 16 – From Pioneer Park P.S. to Brigadoon P.S.

Doon South Boundary Study - Scenario 16 JK-6 Boundaries (from Pioneer Park P.S. to Brigadoon P.S.)



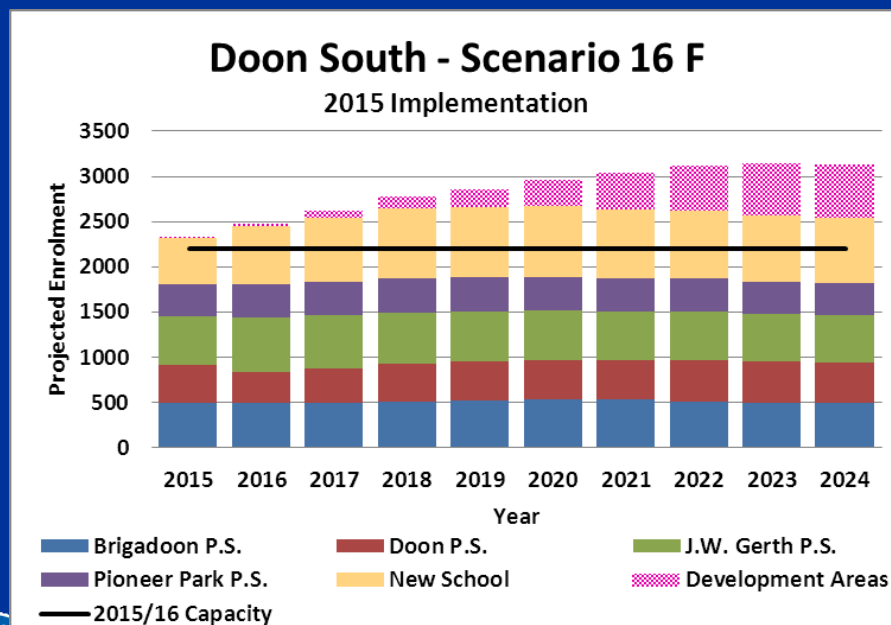
Scenario 16 – From Pioneer Park P.S. to J.W. Gerth P.S.

Doon South Boundary Study - Scenario 16 JK-6 Boundaries (from Pioneer Park P.S. to J.W. Gerth P.S.)



Scenario 16F (2015 Implementation)

School	2015/16 Capacity	New Capacity (requires approval)	Total Capacity Required	Grades	Year									
					2015	2016	2017	2018	2019	2020	2021	2022	2023	2024
Brigadoon P.S.	421	46	467	JK-6	495	495	495	505	520	530	525	510	495	485
Doon P.S.	331	115	446	7-8	415	340	380	420	430	435	435	455	455	455
J.W. Gerth P.S.	536		536	JK-6	535	600	585	565	555	550	540	535	525	520
Pioneer Park P.S.	308	46	354	JK-6	360	375	370	375	375	370	365	365	360	360
New School	600	138	738	JK-8	515	640	715	775	780	785	770	750	735	715
Development Areas					5	30	70	135	200	295	410	510	570	600
Total	2196		2541		2330	2480	2620	2775	2860	2965	3050	3125	3140	3135

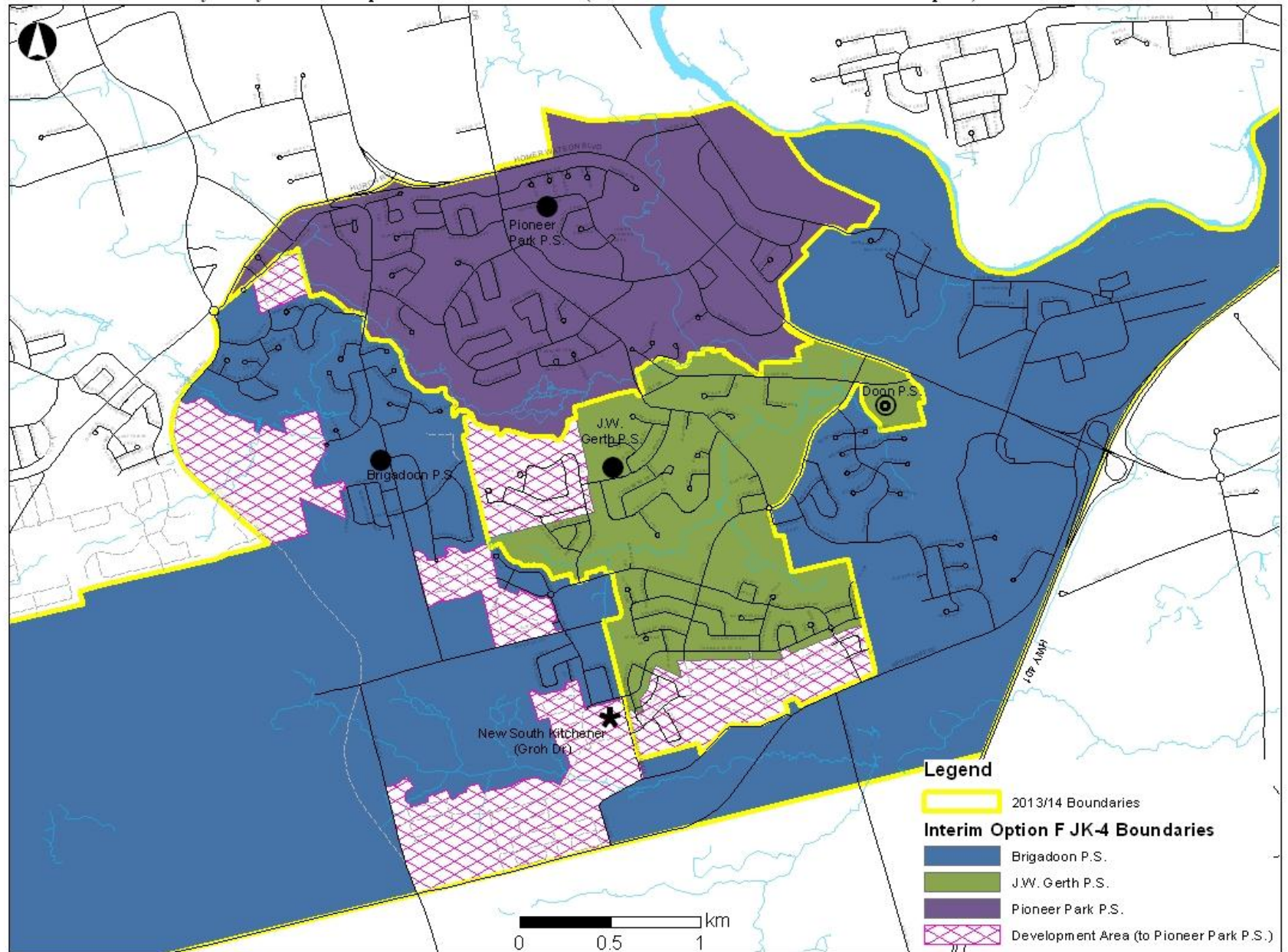


Scenario 16 - Objectives	Met?	Notes
• To establish a boundary for the new South Kitchener Groh Drive elementary school	<input checked="" type="checkbox"/>	- Boundary implementation date dependant on school opening date
• To increase the number of students housed in permanent accommodation in a cost-effective way	<input checked="" type="checkbox"/>	- 5 classroom addition at Doon P.S. - 2 classroom additions at Brigadoon P.S. and Pioneer Park P.S. - 6 additional classrooms at New South Kitchener school - Approx. cost \$6.6M
• To provide equitable learning opportunities for students and staff by moving towards the following criteria (<i>from Board Policy 3002</i>):		
• <i>JK-6 facilities between 350 and 400 students (approx. 2 classes/grade)</i>	<input checked="" type="checkbox"/>	- No schools under 350 pupils - Schools with FI classes warrant larger organizations (400+ students)
• <i>JK-8 facilities between 500 and 650 students (approx. 2 classes/grade JK-6, 2+ classes/grade 7-8)</i>	<input checked="" type="checkbox"/>	- New South Kitchener School is > 650 students
• <i>Minimizing the potential for schools with enrolments over 650 students</i>	<input checked="" type="checkbox"/>	- New South Kitchener School is 750+ students
• To increase the number of students within walking distance to their assigned school (<1.6 km)	<input checked="" type="checkbox"/>	- More JK-6 students within walking distance - More Grade 7-8 students within walking distance
• To establish boundaries around "Development Areas" where proposed plans of subdivision are temporarily assigned to holding schools until a permanent accommodation solution can be determined	<input checked="" type="checkbox"/>	- Stages 4-8 of Aactiva Holdings Inc. 30T-08203 plan school TBD - All stages of Monarch Corp. 30T-07204 plan school TBD - Stage 1B of Monarch Corp. 30T-07202 plan school TBD
• To develop an interim (temporary) accommodation strategy, beginning in September 2014, to assist schools with increasing enrolment until such time as the new South Kitchener Groh Drive school is open	<input checked="" type="checkbox"/>	- Interim Option F



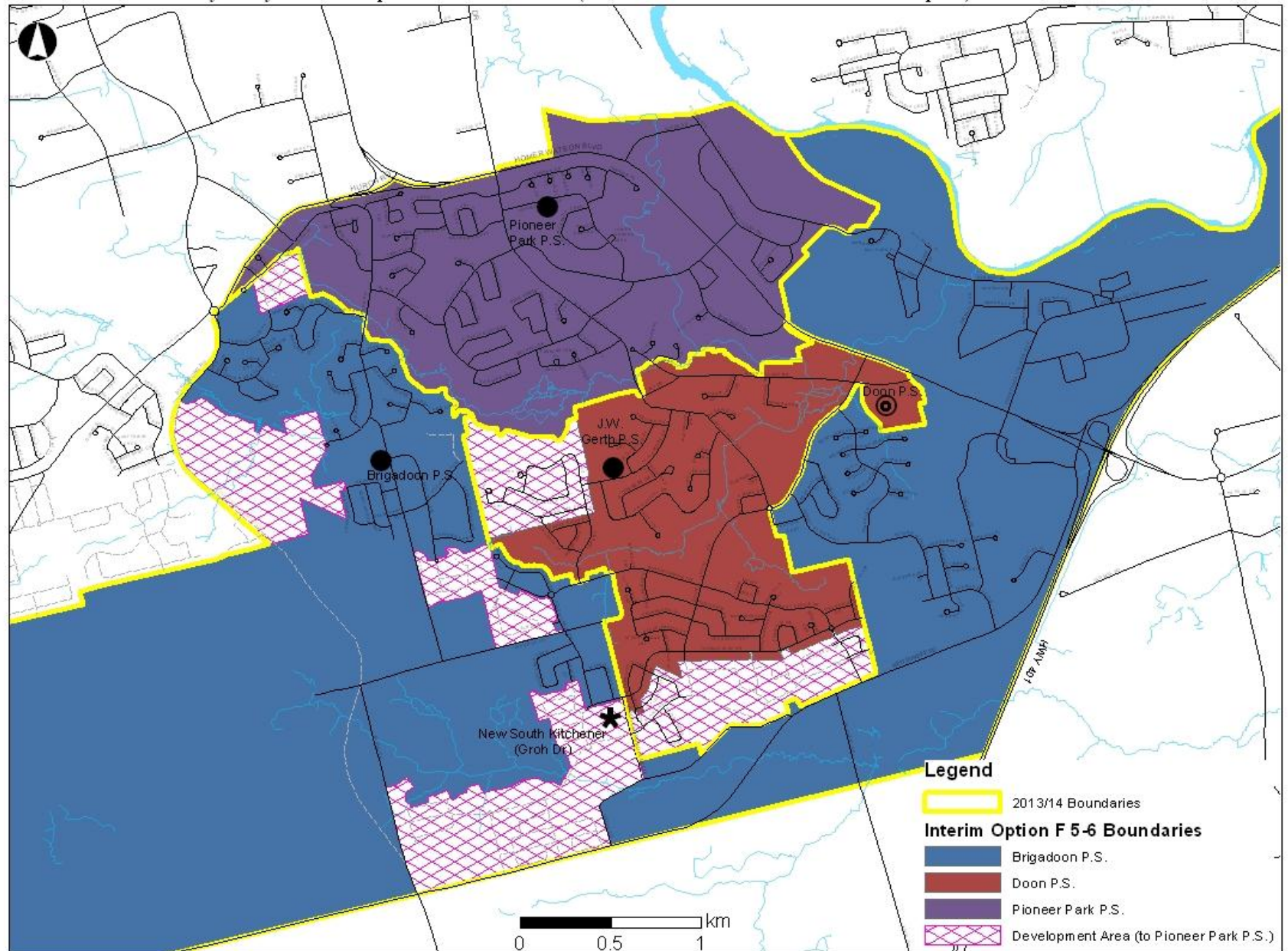
Interim Option F – JK-4 Boundaries

Doon South Boundary Study - Interim Option F JK-4 Boundaries (2014 until new South Kitchener school opens)



Interim Option F – Gr. 5-8 Boundaries

Doon South Boundary Study - Interim Option F 5-6 Boundaries (2014 until new South Kitchener school opens)



Interim Option F – Scenario 14

2015 Implementation												
Scenario 14	2014			2015			2016			2017		
School	Grades	Enrolment	Portables	Grades	Enrolment	Portables	Grades	Enrolment	Portables	Grades	Enrolment	Portables
Brigadoon P.S.	JK-6	555	6	JK-6	505	4	JK-6	495	3	JK-6	495	3
Doon P.S.	5-8	510	8	6-8	490	7	7-8	425	4	7-8	470	6
J.W. Gerth P.S.	JK-4	640	5	JK-5	490	0	JK-6	540	0	JK-6	520	0
Pioneer Park P.S.	JK-6	440	6	JK-6	360	2	JK-6	375	3	JK-6	370	3
New School	N/A	0		JK-5	470	0	JK-6	620	1	JK-6	695	4
Development Areas		0			5			30			70	
Total		2140	24		2330	13		2480	11		2620	16

2016 Implementation												
Scenario 14	2014			2015			2016			2017		
School	Grades	Enrolment	Portables	Grades	Enrolment	Portables	Grades	Enrolment	Portables	Grades	Enrolment	Portables
Brigadoon P.S.	JK-6	555	6	JK-6	595	8	JK-6	505	4	JK-6	495	3
Doon P.S.	5-8	510	8	5-8	580	11	6-8	540	9	7-8	470	6
J.W. Gerth P.S.	JK-4	640	5	JK-4	625	4	JK-5	475		JK-6	530	0
Pioneer Park P.S.	JK-6	440	6	JK-6	530	10	JK-6	375	3	JK-6	370	3
New School	N/A	0		N/A	0		JK-5	555		JK-6	680	3
Development Areas		0			0			30			70	
Total		2140	24		2330	32		2480	16		2620	15

Interim Option F – Scenario 16

2015 Implementation												
Scenario 16	2014			2015			2016			2017		
School	Grades	Enrolment	Portables	Grades	Enrolment	Portables	Grades	Enrolment	Portables	Grades	Enrolment	Portables
Brigadoon P.S.	JK-6	555	6	JK-6	495	3	JK-6	495	3	JK-6	495	3
Doon P.S.	5-8	510	8	6-8	415	4	7-8	340	0	7-8	380	2
J.W. Gerth P.S.	JK-4	640	5	JK-5	535	0	JK-6	600	3	JK-6	585	2
Pioneer Park P.S.	JK-6	440	6	JK-6	360	2	JK-6	375	3	JK-6	370	3
New School	N/A	0		JK-7	515	0	JK-8	640	2	JK-8	715	5
Development Areas		0			5			30			70	
Total		2140	24		2325	9		2480	11		2620	15

2016 Implementation												
Scenario 16	2014			2015			2016			2017		
School	Grades	Enrolment	Portables	Grades	Enrolment	Portables	Grades	Enrolment	Portables	Grades	Enrolment	Portables
Brigadoon P.S.	JK-6	555	6	JK-6	595	8	JK-6	495	3	JK-6	495	3
Doon P.S.	5-8	510	8	5-8	580	11	6-8	465	6	7-8	380	2
J.W. Gerth P.S.	JK-4	640	5	JK-4	625	4	JK-5	520	0	JK-6	585	2
Pioneer Park P.S.	JK-6	440	6	JK-6	530	10	JK-6	375	3	JK-6	370	3
New School	N/A	0		N/A	0		JK-7	595	0	JK-8	715	5
Development Areas		0			0			30			70	
Total		2140	24		2330	32		2480	12		2620	15

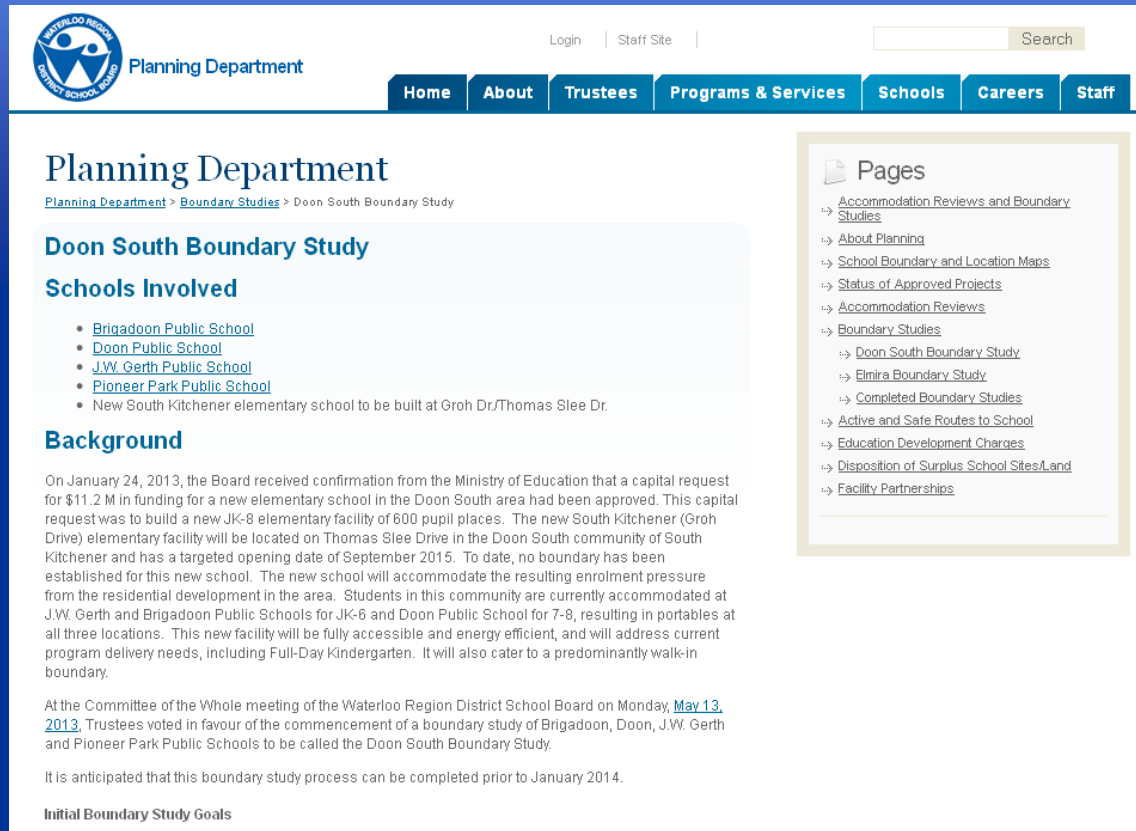
Next Steps

- Working Group reviews public meeting comments
- Working Group may refine scenarios based on public feedback
- Working Group to develop recommendations
- Staff bring recommendations to Trustees
- Trustees vote on recommendations



Webpage

<http://www.wrdsb.ca/planning/boundary-studies/boundary-studiesdoon-south-boundary-study/>



The screenshot shows the website for the Waterloo Region District School Board Planning Department. The header includes the logo, "Planning Department", and navigation links: Home, About, Trustees, Programs & Services, Schools, Careers, and Staff. A search bar is also present. The main content area is titled "Planning Department" and includes a breadcrumb trail: "Planning Department > Boundary Studies > Doon South Boundary Study". Below this is the "Doon South Boundary Study" section, which includes "Schools Involved" (Brigadoon Public School, Doon Public School, J.W. Gerth Public School, Pioneer Park Public School, and a note about a new school) and a "Background" section detailing the capital request for a new elementary school. A "Pages" sidebar on the right lists various documents like "Accommodation Reviews and Boundary Studies", "About Planning", "School Boundary and Location Maps", "Status of Approved Projects", "Accommodation Reviews", "Boundary Studies", "Doon South Boundary Study", "Elmira Boundary Study", "Completed Boundary Studies", "Active and Safe Routes to School", "Education Development Charges", "Disposition of Surplus School Sites/Land", and "Facility Partnerships".

Planning Department
[Planning Department](#) > [Boundary Studies](#) > Doon South Boundary Study

Doon South Boundary Study

Schools Involved

- [Brigadoon Public School](#)
- [Doon Public School](#)
- [J.W. Gerth Public School](#)
- [Pioneer Park Public School](#)
- New South Kitchener elementary school to be built at Groh Dr/Thomas Slee Dr.

Background

On January 24, 2013, the Board received confirmation from the Ministry of Education that a capital request for \$11.2 M in funding for a new elementary school in the Doon South area had been approved. This capital request was to build a new JK-8 elementary facility of 600 pupil places. The new South Kitchener (Groh Drive) elementary facility will be located on Thomas Slee Drive in the Doon South community of South Kitchener and has a targeted opening date of September 2015. To date, no boundary has been established for this new school. The new school will accommodate the resulting enrolment pressure from the residential development in the area. Students in this community are currently accommodated at J.W. Gerth and Brigadoon Public Schools for JK-6 and Doon Public School for 7-8, resulting in portables at all three locations. This new facility will be fully accessible and energy efficient, and will address current program delivery needs, including Full-Day Kindergarten. It will also cater to a predominantly walk-in boundary.

At the Committee of the Whole meeting of the Waterloo Region District School Board on Monday, [May 13, 2013](#), Trustees voted in favour of the commencement of a boundary study of Brigadoon, Doon, J.W. Gerth and Pioneer Park Public Schools to be called the Doon South Boundary Study.

It is anticipated that this boundary study process can be completed prior to January 2014.

Initial Boundary Study Goals

Browse:

- Working Group meeting Agendas, Presentations and Minutes
- Public Meeting Notices, Agendas and Minutes
- Resource Materials and Maps



**Waterloo Region
District School Board**

Contact Information

- Website: www.wrdsb.ca
 - About
 - Planning
 - Boundary Studies
 - Doon South Boundary Study

- E-mail: boundaryfeedback@wrdsb.on.ca

- Phone: 519-570-0003 ext. 4419



Thank you!

Questions or Comments?

