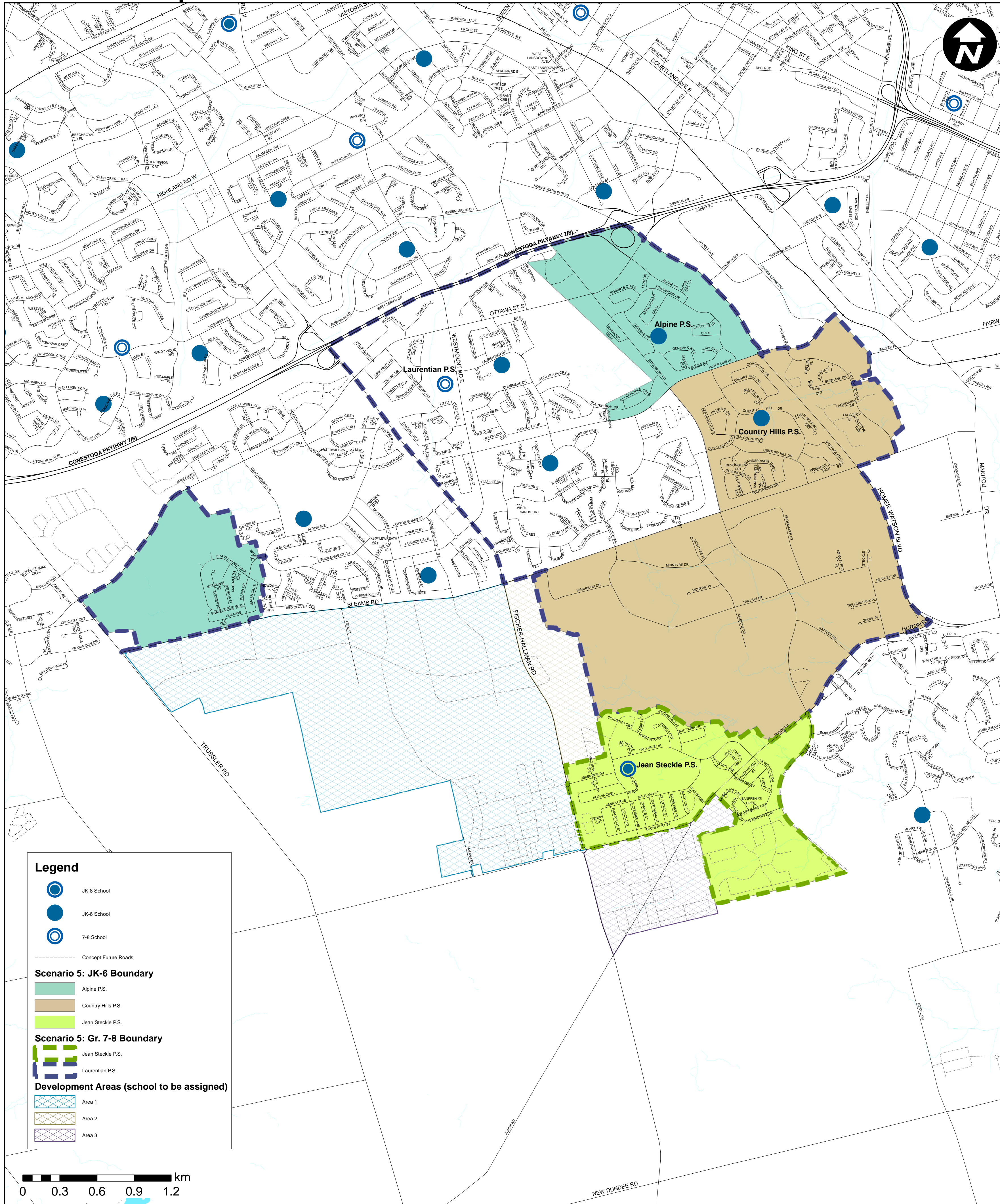


Scenario 5 Proposed Boundaries



Description

2013/14

- Jean Steckle P.S. JK-7
- Boundary changes for Country Hills P.S. and Alpine P.S.
- Gr. 8 students in Jean Steckle P.S. boundary attend Laurentian P.S.
- Future development areas to be assigned

2014/15

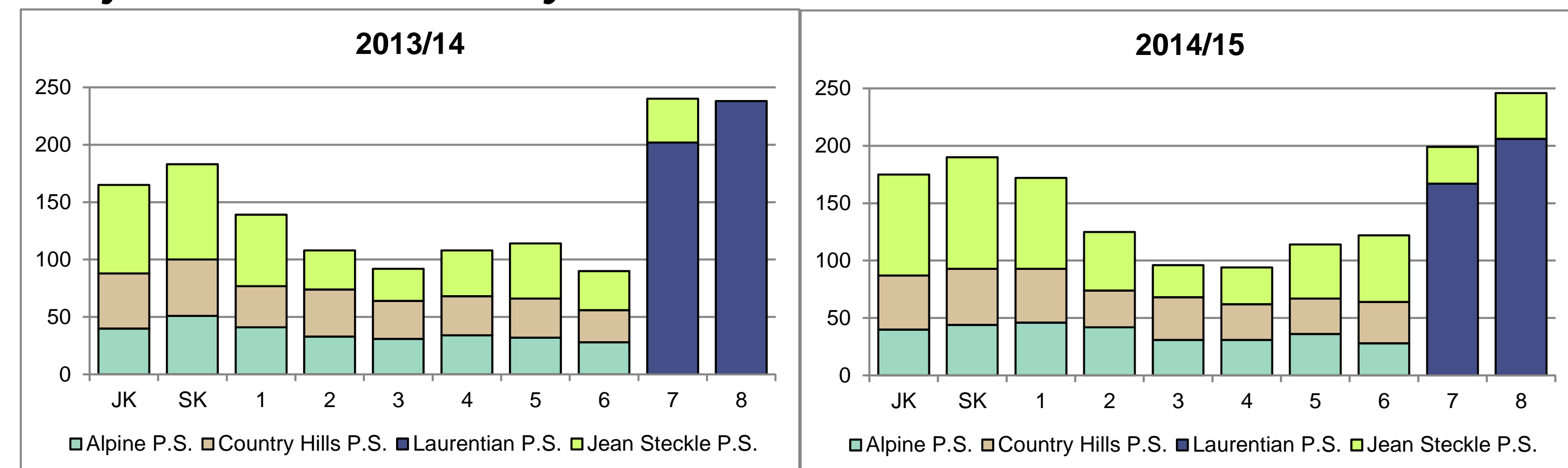
- Jean Steckle P.S. JK-8
- Future development areas to be assigned

Projected Enrolment by School

School	Built Capacity	Year										
		2013	2014	2015	2016	2017	2018	2019	2020	2021	2022	2023
Alpine P.S.	300	290	298	316	318	325	330	330	323	321	323	323
Country Hills P.S.	317	303	310	316	325	331	334	342	340	336	336	336
Laurentian P.S.	412	440	373	366	385	368	345	345	385	395	374	374
Jean Steckle P.S.	643	444	552	602	663	699	742	805	854	892	925	925
Development Area 1	N/A	0	0	0	0	66	161	257	296	326	331	331
Development Area 2	N/A	0	0	0	0	0	0	0	0	0	0	0
Development Area 3	N/A	0	12	35	52	78	110	145	196	249	277	277
Total	1672	1477	1545	1635	1743	1867	2022	2224	2394	2519	2566	2566

Enrolment projections are estimates based on several assumptions and use the most current data available. Development area projections are rough estimates of the number of students expected to be generated by proposed plans of subdivision. Only those units in plans with development applications currently under review by the City of Kitchener have been included in the projections. Timing of development is dependent on plan registration and the motivation of developers to proceed with construction (housing market).

Projected Enrolment by Grade



Full-Day Kindergarten Implementation Year

School	2013	2014
Alpine P.S.	x	
Country Hills P.S.		x
Jean Steckle P.S.	x	

What is a 'Development Area'?

A development area is an area with planned future development. There are no existing students/homes in these areas. As each phase in the proposed plan of subdivision is registered, a school will be assigned that has space to accommodate the projected enrolment until a permanent solution can be established.