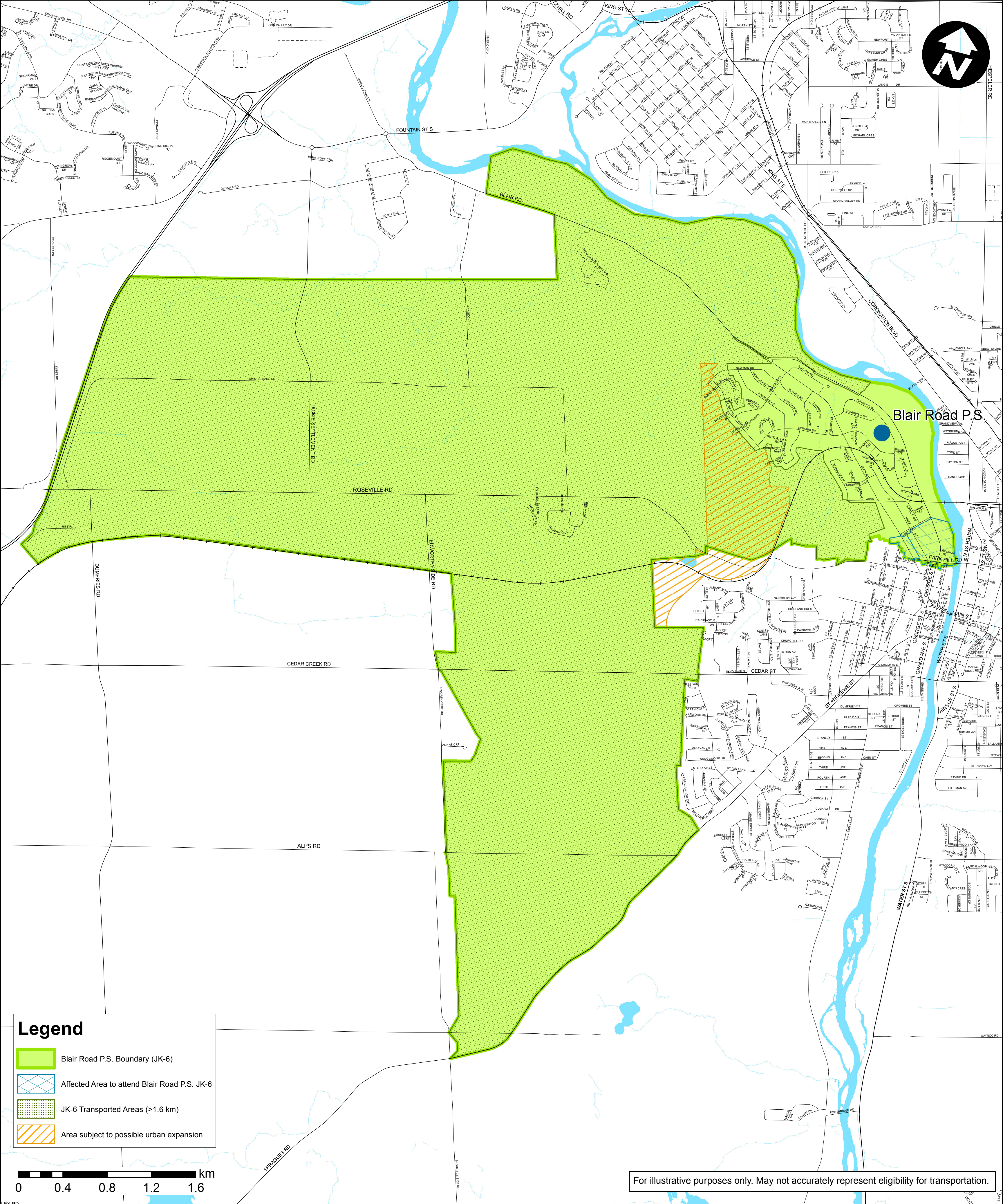


Figure 6: Blair Road Public School boundary recommendation



Draft Recommendation #3:
New boundary for Blair Road Public School

The West Galt ARC recommends to the WRDSB that:

The Blair Road Public School Junior Kindergarten to Grade 6 boundary be modified as illustrated in Figure 6; and that

New Kindergarten registrants in the affected area (as identified in Figure 6) the year prior to the change be given the option to enrol at either Blair Road P.S. or Dickson P.S. for that school year; and that

Transportation be extended to those new JK/SK registrants choosing to attend Blair Road P.S. based on transportation eligibility.

Table 11: Projected enrolment at Blair Road P.S. with boundary change

School	OTG Capacity	Grades	Projected Total Enrolment by Year						
			2015	2016	2017	2018	2019	2020	2021
Blair Road P.S.	276	JK-6	235	240	244	243	242	242	241

Table 9: Scenario 23 classrooms required to accommodate enrolment

School	# classrooms*	Estimated Number of Classrooms Required			
		2015	2016	2017	2018
Blair Road P.S.	11	11	11	11	11

* Does not include rooms used for Special Education or Computer Labs. Calculated based on average loading of classes per grad e (FDK = 26, Gr. 1-3 = 20 and Gr. 4-8 = 23)

Further Details:

- Potential enrolment from possible future development area (identified as “area subject to possible urban expansion”) has not been included in the enrolment projections. The ARC agreed that given its isolation to the remainder of the West Galt community, excluding Blair Road P.S., it would be recommended for the Board to consider future student accommodation for this area at a later date, once plans for development materialize.
 - Future changes in this area will have little to no impact on the recommendations being brought forward by the ARC at this time.
- Blair Road P.S. will maintain its Special Education area classes (Autism Spectrum Disorder and Learning Disabilities)
- No Dickson P.S. students currently living in the affected area

Notes:
OTG Capacity = On the Ground Capacity – Ministry of Education assigned loading of students in permanent space in a facility
A factor has been applied to each school’s enrolment to account for out of boundary student gains and loses due to magnet programs such as French Immersion (FI) and Special Education Area Classes (SpecEd)
Enrolment projections are approximations calculated based on the most current information available