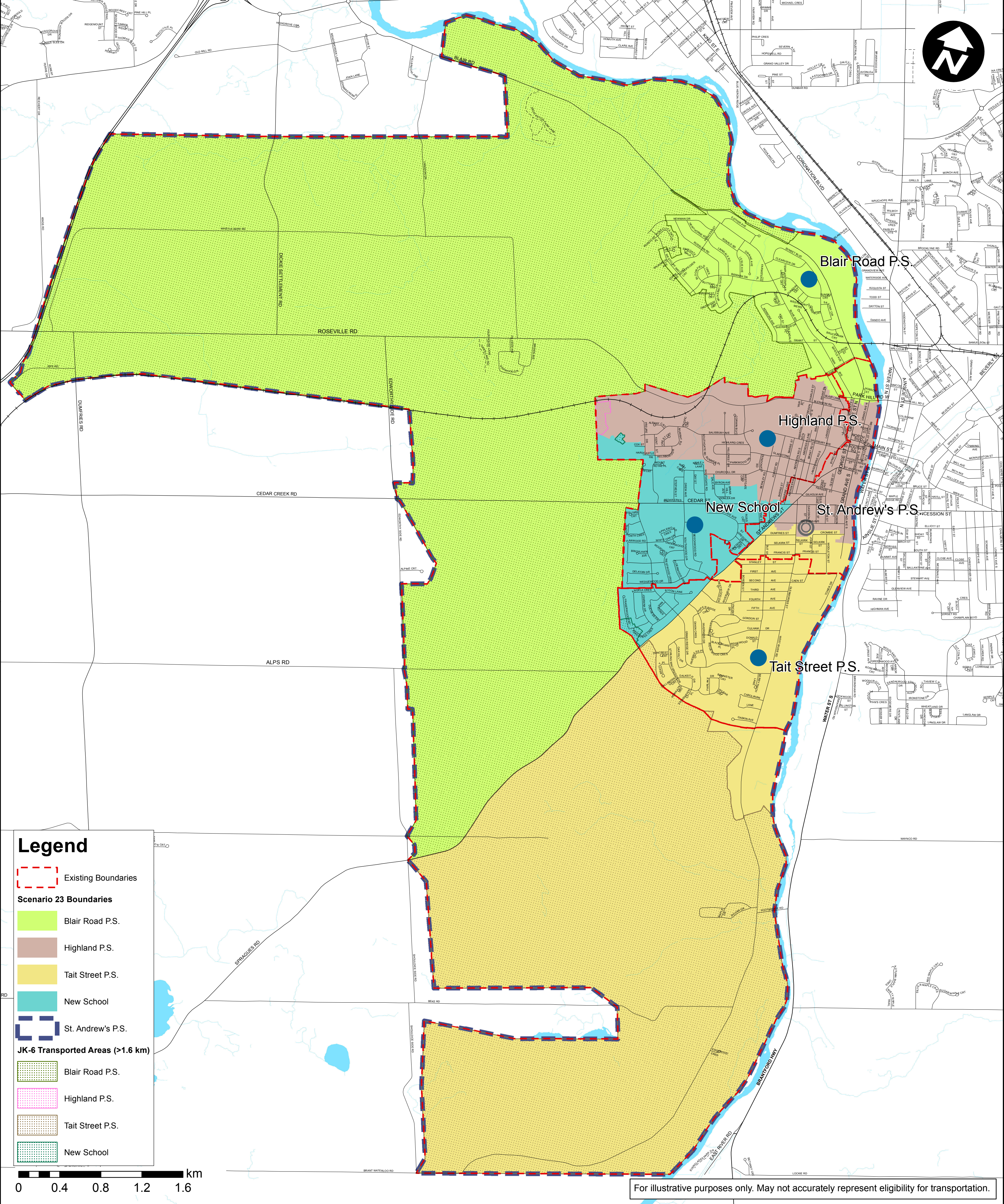


Figure 3: Scenario 23 Proposed Boundaries



Draft Recommendation #1:
Close Dickson Public School

The West Galt ARC recommends to the WRDSB that:

Dickson Public School be closed and that the JK-5 program be consolidated into Blair Road, Highland, Tait Street and a new school; and that

Students enrolled at Dickson P.S. in Grades 3, 4 and 5 the school year prior to its closure be given the option to enrol at either Blair Road, Highland, or Tait Street Public Schools, or at the new school for Grades 4-6; and that

Transportation be extended to those Dickson P.S. students to the school of their choosing based on transportation eligibility; and that

New Kindergarten registrants the year prior to the closure of Dickson P.S. be given the option to enrol at either Dickson P.S. or the future receiving school.

Further Details:

- The ARC developed an accommodation solution that does not utilize the Dickson P.S. facility for the following reasons:
 - Due to its site size (0.96 acres) and historical designation, it is not feasible to expand Dickson P.S. (add classrooms) to accommodate additional students; therefore it cannot provide any assistance in accommodating additional enrolment from the review area
 - It is also not feasible to add a gymnasium, expand the library and/or retrofit the Kindergarten rooms, key features that are missing at the school.
 - Building can only accommodate 7 classes of students (161 capacity); therefore enrolment will always be low.
- Existing Dickson P.S. junior elementary students (at the time of the closure) will have the option to choose which school they will attend for Grades 4 to 6 (either Blair Road P.S., Highland P.S., Tait Street P.S. or the new school)
- The boundaries for the receiving schools have been drawn to maximize the potential for walking, biking, etc. (“active transportation”) to school.
- The ARC suggests that in order to alleviate concerns about future uses and potential impact on property values, an **adaptive reuse study** be conducted by the Board in partnership with the City and community members. An adaptive reuse study is a community process to identify suitable options for adapting old structures to new purposes.

Table 8: Scenario 23 enrolment projections

School	Capacity	Grades	Projected Total Enrolment by Year							FI	Spec. Ed.
			2015	2016	2017	2018	2019	2020	2021		
Blair Road PS	276	JK-6	235	240	244	243	242	242	241		ASD, LD
Dickson PS	CLOSED										
Highland PS	431	JK-6	493	500	505	488	479	475	477	1-6	
St. Andrew's PS	401	7-8	296	308	317	346	364	351	332	7-8	
Tait Street PS	348	JK-6	288	297	297	299	313	323	336		
New School	350	JK-6	302	315	314	326	333	338	342		
TOTAL	1806		1614	1660	1677	1702	1731	1729	1728		

Note: Enrolment projections are approximations calculated based on the most current information available