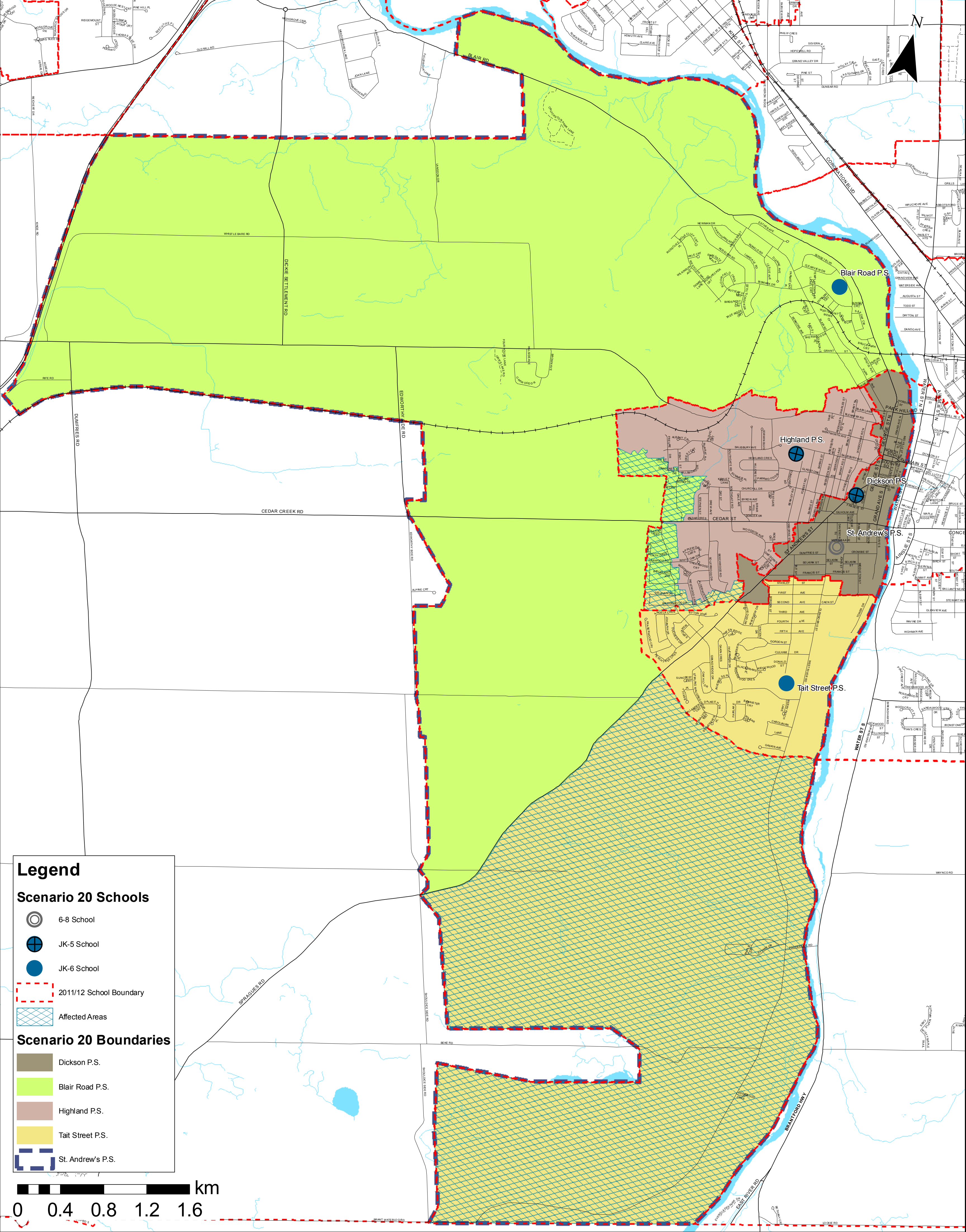


BOUNDARIES



West Galt Elementary Schools Accommodation Review

Scenario 20

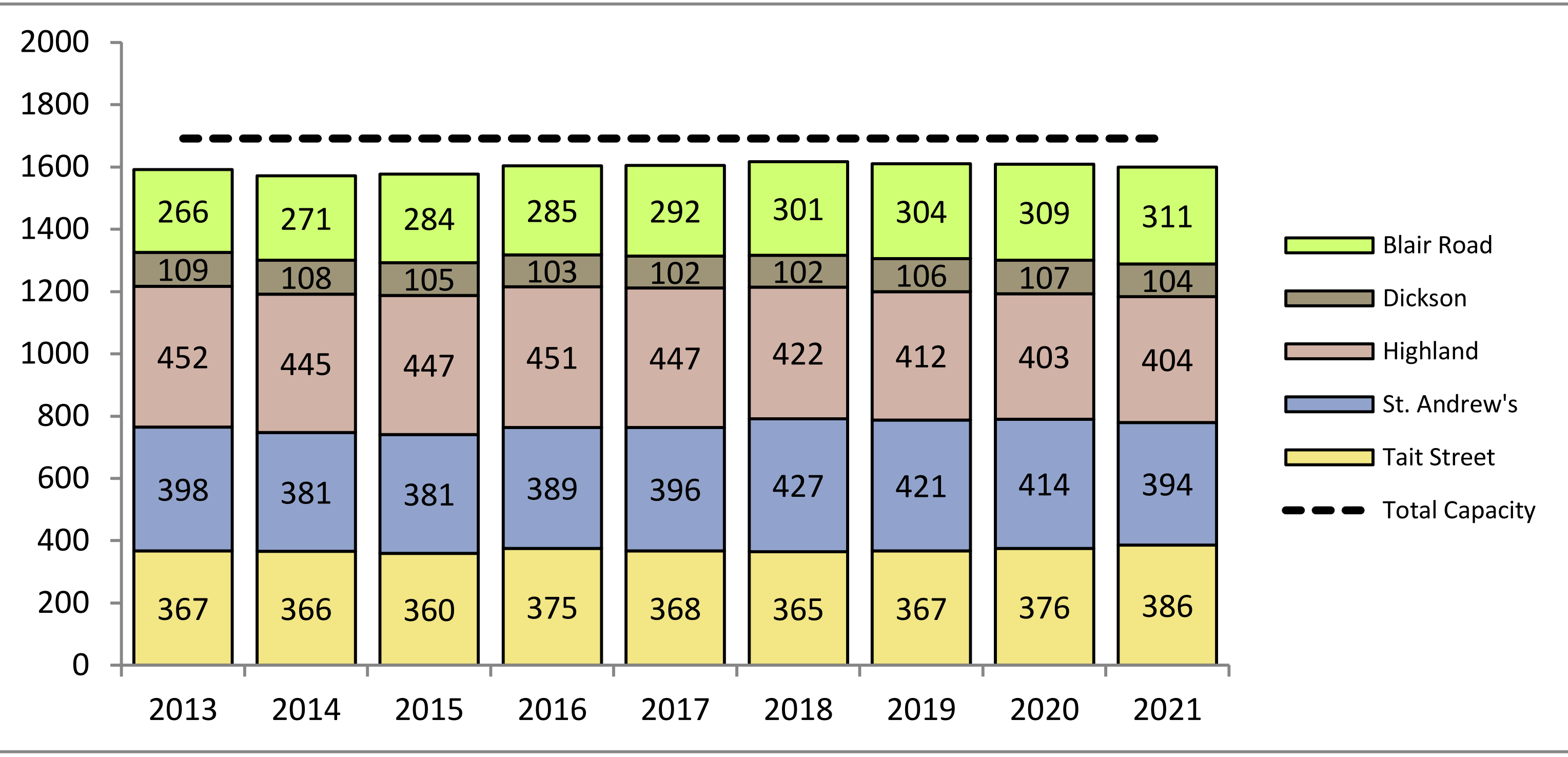
DESCRIPTION

- Boundary changes for all schools except Dickson P.S.
- Dickson P.S. and Highland P.S. students attend St. Andrew's P.S. for 6-8
- Blair Road P.S. and Tait Street P.S. students attend St. Andrew's P.S. for 7-8

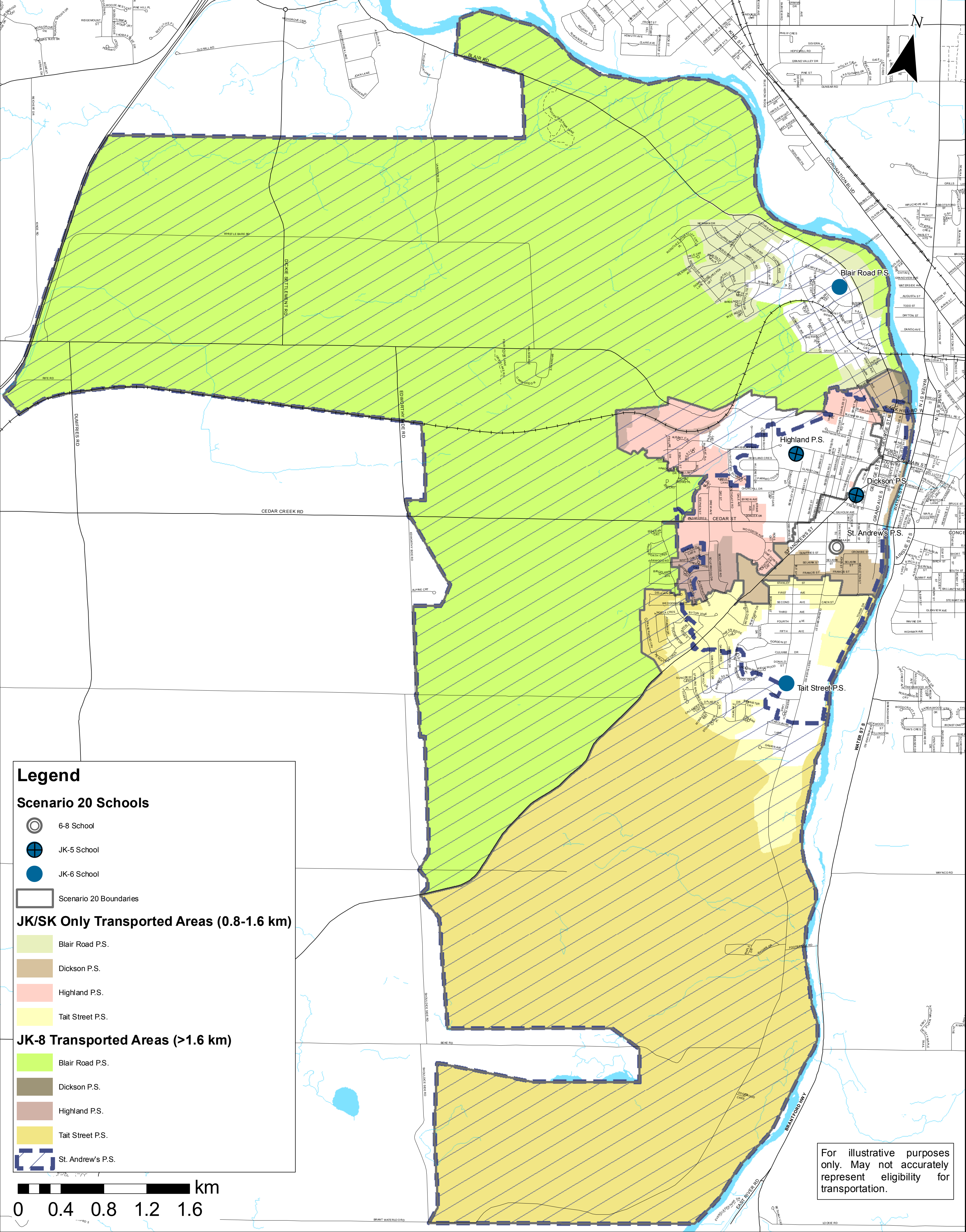
ENROLMENT PROJECTIONS

School	OTG Capacity	Grades	Projected Total Enrolment by Year					FI	Spec. Ed.
			2013	2015	2017	2019	2021		
Blair Road PS	294	JK-6	266	284	292	304	311		●
Dickson PS	161	JK-5	109	105	102	106	104		
Highland PS	464	JK-5	452	447	447	412	404	●	
St. Andrew's PS	424	6-8	398	381	396	421	394	●	
Tait Street PS	348	JK-6	367	360	368	367	386		
TOTAL	1691		1592	1577	1605	1610	1599		

PROJECTED ENROLMENT



Notes:
OTG Capacity = On the Ground Capacity – Ministry of Education assigned loading of students in permanent space in a facility
A factor has been applied to each school's enrolment to account for out of boundary student gains and loses due to magnet programs such as French Immersion (FI) and Special Education Area Classes (SpecEd)
Enrolment projections are approximations calculated based on the most current information available



West Galt Elementary Schools Accommodation Review

Scenario 20

DESCRIPTION

- Boundary changes for all schools except Dickson P.S.
- Dickson P.S. and Highland P.S. students attend St. Andrew’s P.S. for 6-8
- Blair Road P.S. and Tait Street P.S. students attend St. Andrew’s P.S. for 7-8

COSTS

Capital Construction Costs

- Full-Day Kindergarten addition at Tait Street P.S. – 2014/15 (subject to Ministry funding)

Accessibility

- Accessibility requirements – Dickson P.S., St. Andrew’s P.S., Tait Street P.S.

SAVINGS

Revenue/Sales

- None

Operations

- None

REVIEW OBJECTIVES

Objective	Meets	Doesn’t Meet
To reorganize the JK-5, 6-8 school organizations in favour of JK-6, JK-8 or 7-8		X
To reduce the number of students currently attending Highland P.S. to better match the enrolment to the schools' built capacity	X	
To reduce the potential for combined grades at schools by moving towards the following criteria (from Board Policy 3002): <ul style="list-style-type: none">• JK-6 facilities between 350 and 400 students (approx. 2 classes/grade)• JK-8 facilities between 500 and 650 students (approx. 2 classes/grade JK-6, 2+ classes/grade 7-8)	X	
To increase the number of students within walking distance to their assigned school		X
To reduce the reliance on portable classrooms for long-term student accommodation	X	
To reduce unused (surplus) capacity by organizing schools and boundaries to achieve utilization rates (enrolment/capacity) that exceed 80% over the long-term (approx. 10 years)	X	
To maintain those school buildings that can provide appropriate, purpose-built facilities (kindergarten rooms, gyms, libraries, etc.)		X
To reduce the cost to achieve legislated accessibility requirements by 2025		X