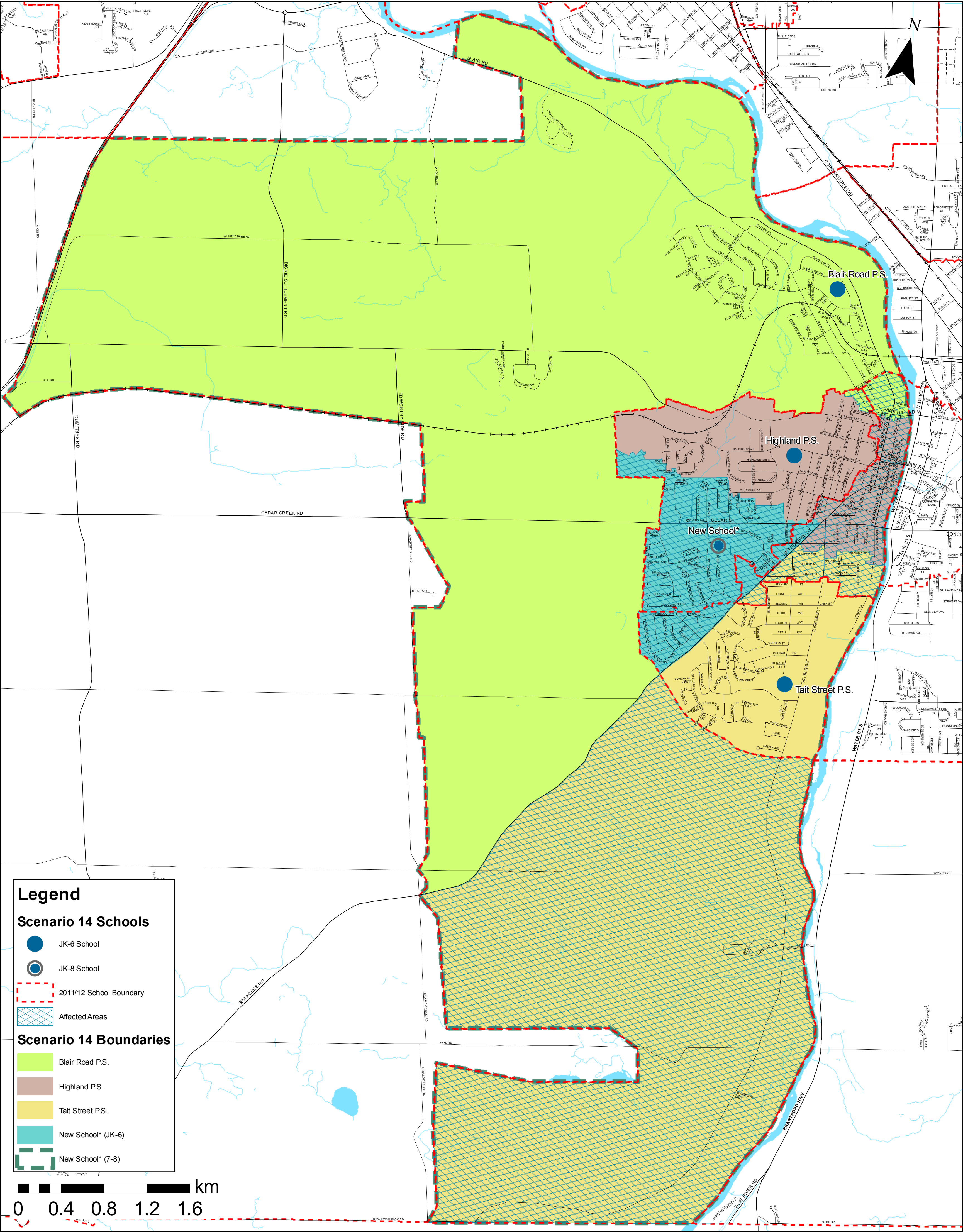


BOUNDARIES



West Galt Elementary Schools Accommodation Review

Scenario 14

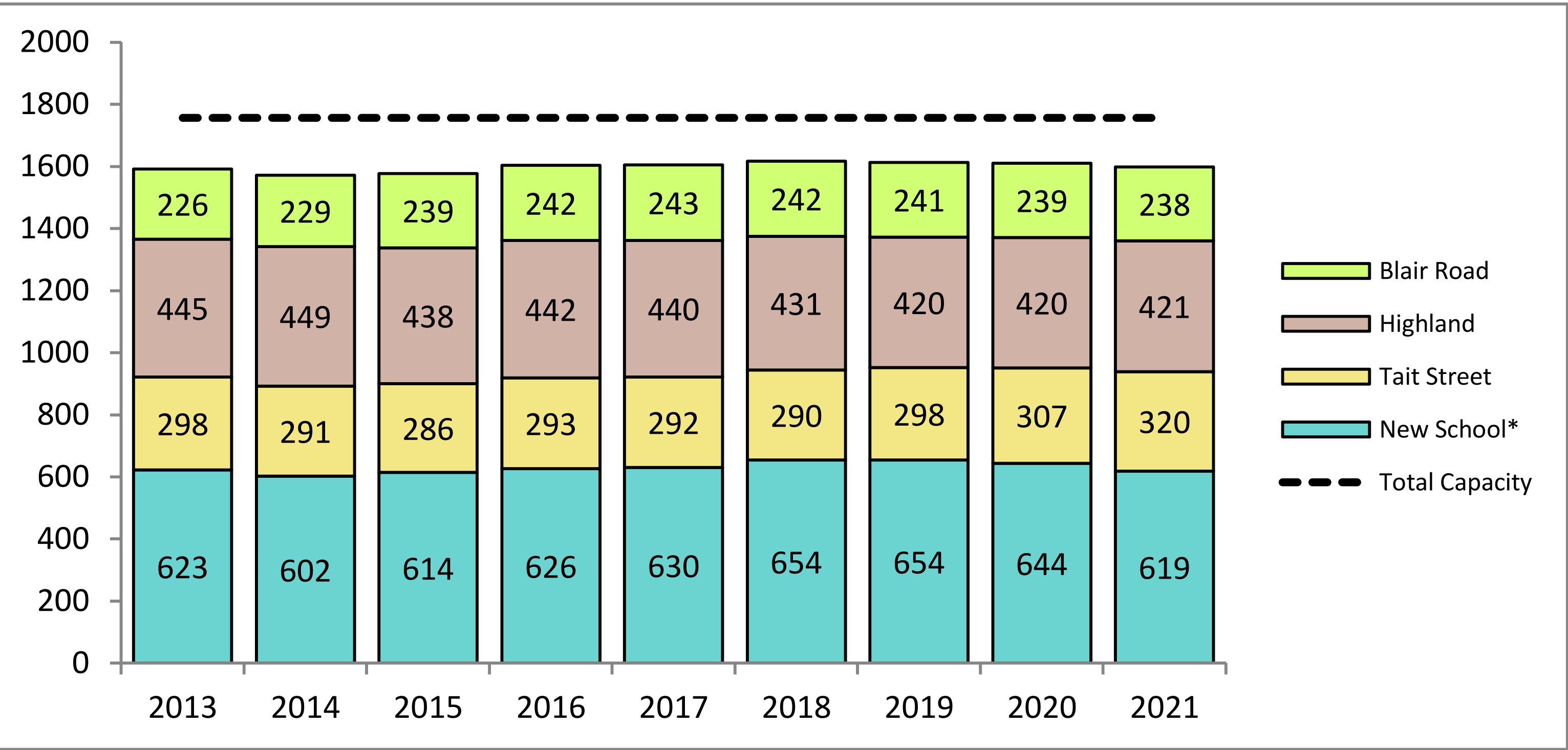
DESCRIPTION

- Dickson P.S. closes
- St. Andrew’s P.S. closes
- A new JK-8 school is built on Beechwood Rd\*, offers 7-8 program for the area
- Highland P.S. adds Gr. 6 to become a JK-6 school
- Boundary changes

ENROLMENT PROJECTIONS

School	OTG Capacity	Grades	Projected Total Enrolment by Year					FI	Spec. Ed.
			2013	2015	2017	2019	2021		
Blair Road PS	294	JK-6	226	239	243	241	238		•
Dickson PS	CLOSED								
Highland PS	464	JK-6	445	438	440	420	421	• (1-6)	
St. Andrew’s PS	CLOSED								
Tait Street PS	348	JK-6	298	286	292	298	320		
New School *	650	JK-8	623	614	630	654	619	• (7-8)	
TOTAL	1756		1592	1577	1605	1613	1598		

PROJECTED ENROLMENT



Notes:  
OTG Capacity = On the Ground Capacity – Ministry of Education assigned loading of students in permanent space in a facility  
A factor has been applied to each school’s enrolment to account for out of boundary student gains and loses due to magnet programs such as French Immersion (FI) and Special Education Area Classes (SpecEd)  
Enrolment projections are approximations calculated based on the most current information available  
\* Location subject to site feasibility study



**Legend**

**Scenario 14 Schools**

- JK-6 School
- JK-8 School
- Scenario 14 Boundaries

**JK/SK Only Transported Areas (0.8-1.6 km)**

- Blair Road P.S.
- Highland P.S.
- New School
- Tait Street P.S.

**JK-8 Transported Areas (>1.6 km)**

- Blair Road P.S.
- Highland P.S.
- New School
- Tait Street P.S.
- New School (7-8)

0 0.4 0.8 1.2 1.6 km

For illustrative purposes only. May not accurately represent eligibility for transportation.

*DESCRIPTION*

- Dickson P.S. closes
- St. Andrew's P.S. closes
- A new JK-8 school is built on Beechwood Rd, offers 7-8 program for the area
- Highland P.S. adds Gr. 6 to become a JK-6 school
- Boundary changes

## COSTS

## Capital Construction Costs

- New 650 pupil school estimated cost = \$12M
  - Based on Ministry of Education funding calculation
 

$$\text{Pupil Places} \times \text{Area Benchmark} \times \text{Construction cost}$$

$$650 \text{ pupils} \times 10.02\text{m}^2 \times \$1847.53/\text{m}^2$$
- Full-Day Kindergarten addition at Tait Street P.S. – 2014/15 (subject to Ministry funding)

## Accessibility

- Accessibility requirements - Tait Street P.S.

## SAVINGS

## Revenue/Sales

- Sale of Dickson P.S. building + property (0.96 acres)
- Sale of St. Andrew's P.S. building + property (4.025 acres)

## Operations

- Decrease in number of students requiring transportation
  - Average cost of 72 passenger bus is \$32,720/year – urban run estimated at \$16,000/year
- Reduction of 1 Facility, Principal, Secretary, Custodian, etc.

## Accessibility

- Accessibility issues at Dickson P.S. and St. Andrew's P.S. eliminated

## REVIEW OBJECTIVES

Objective	Meets	Doesn't Meet
To reorganize the JK-5, 6-8 school organizations in favour of JK-6, JK-8 or 7-8	X	
To reduce the number of students currently attending Highland P.S. to better match the enrolment to the schools' built capacity	X	
To reduce the potential for combined grades at schools by moving towards the following criteria (from Board Policy 3002): <ul style="list-style-type: none"> <li>• JK-6 facilities between 350 and 400 students (approx. 2 classes/grade)</li> <li>• JK-8 facilities between 500 and 650 students (approx. 2 classes/grade JK-6, 2+ classes/grade 7-8)</li> </ul>	X	
To increase the number of students within walking distance to their assigned school	X	
To reduce the reliance on portable classrooms for long-term student accommodation	X	
To reduce unused (surplus) capacity by organizing schools and boundaries to achieve utilization rates (enrolment/capacity) that exceed 80% over the long-term (approx. 10 years)	X	
To maintain those school buildings that can provide appropriate, purpose-built facilities (kindergarten rooms, gyms, libraries, etc.)	X	
To reduce the cost to achieve legislated accessibility requirements by 2025	X	