

West Galt Elementary Schools Pupil Accommodation Review

Accommodation Report and
Recommendations of the
Accommodation Review Committee

June 18, 2012

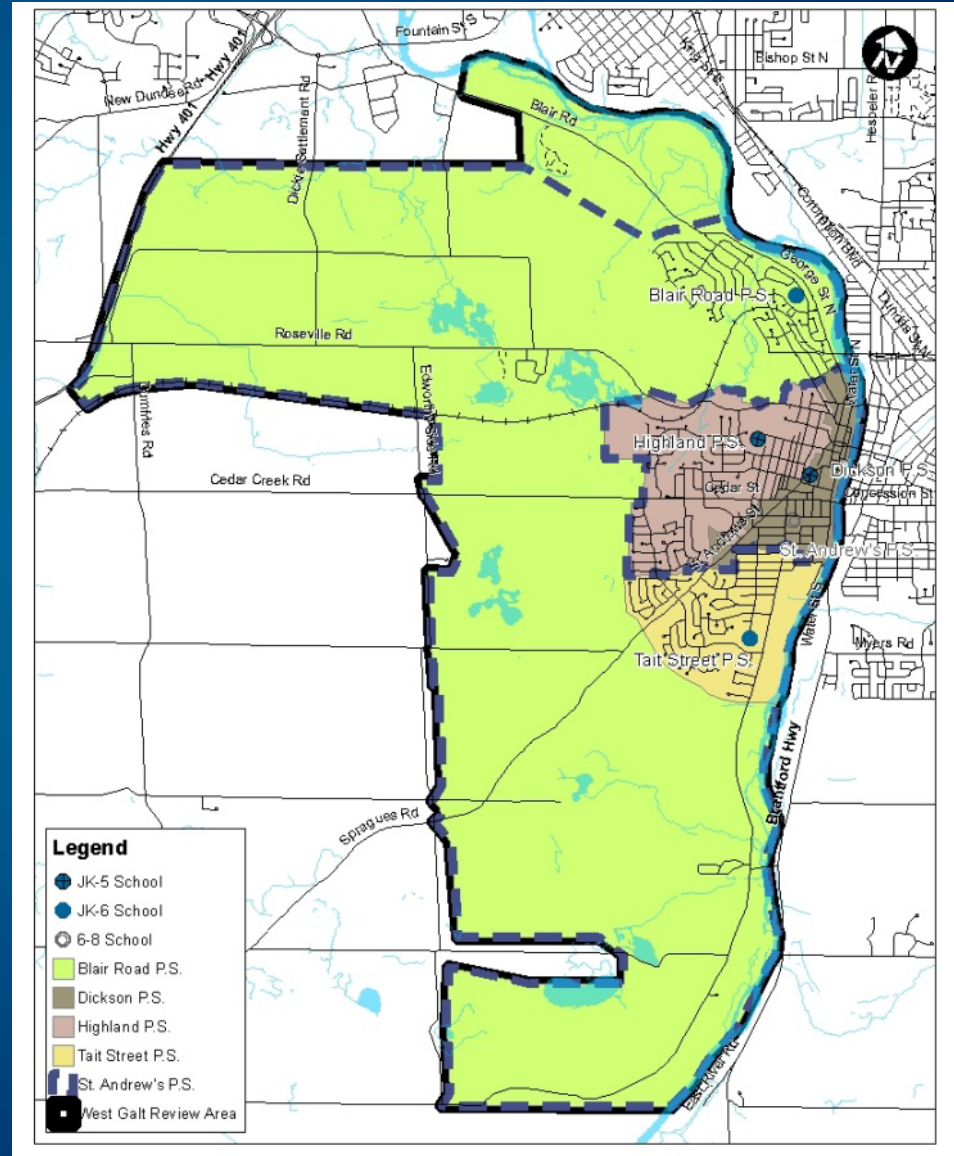
West Galt ARC Members

- **Parents**
 - Kelly Deml
 - Lynn Robb
 - Al Potma
 - Dianne Ray
 - Paula Ouellet
 - Hayley Orman
 - Bev Fox
 - Roy Roethel
 - Karen Destun
 - Maura Fuller
- **City of Cambridge**
 - Trevor McWilliams
- **Principals**
 - Jodie Meyer
 - Barry Frame
 - Wendy Bowker
 - Karen Tomlin
 - Marcia Lubert
- **Superintendent**
 - Lila Read
- **Facilities/Planning**
 - Dennis Cuomo
 - Ron Dallan
 - Lauren Manske
 - Nathan Hercanuck
- **Other Board Staff
(who attended ARC meetings)**
 - Andrea Kean
 - Nick Chiarelli
 - Michelle Schmid
 - Abigail Dancy
 - Jim Berry
 - Tony Puim

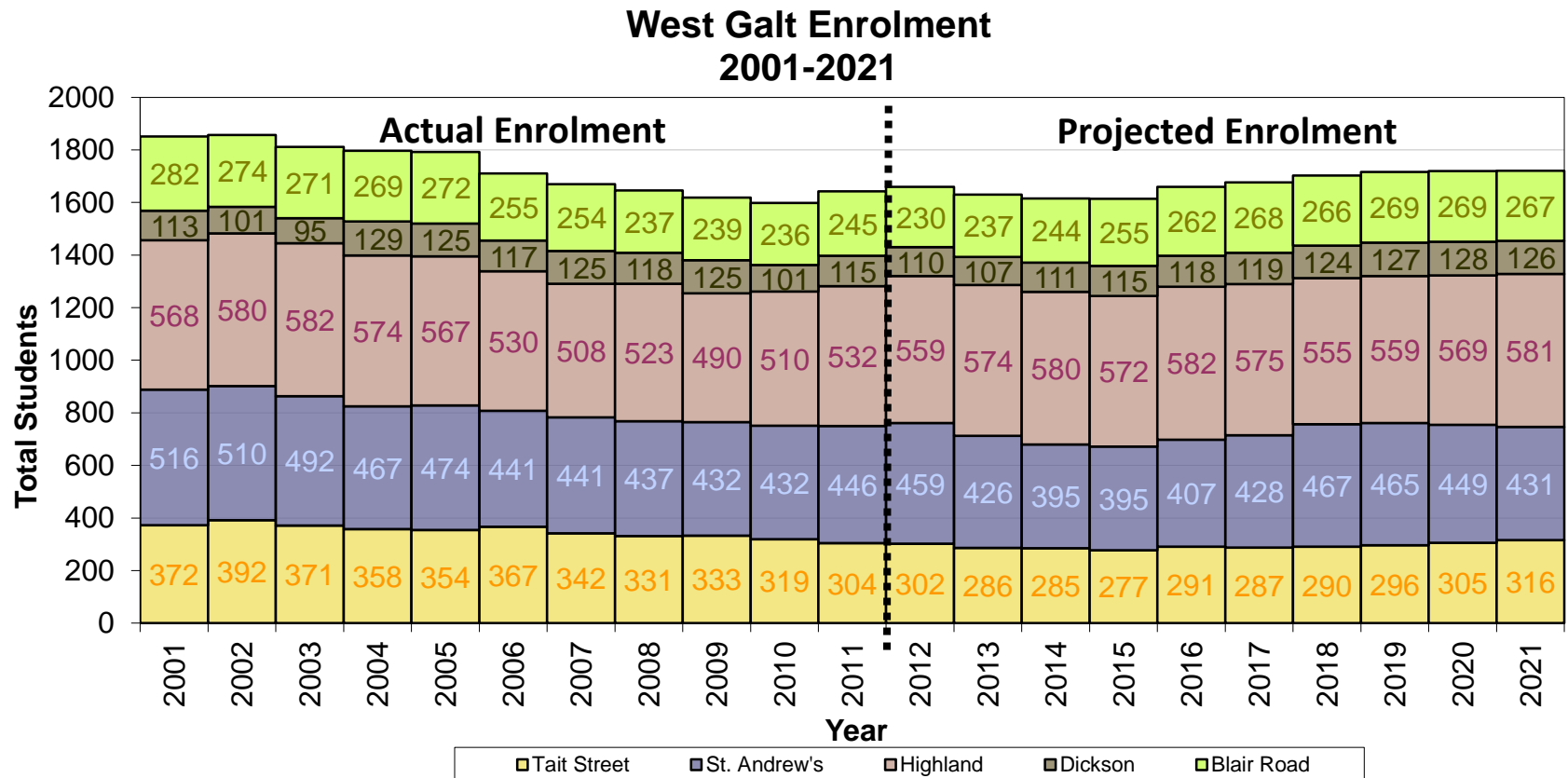
West Galt Review Area

5 Schools

- Blair Road P.S.
 - JK-6
- Dickson P.S.
 - JK-5
- Highland P.S.
 - JK-5
- St. Andrew's P.S.
 - 6-8
- Tait Street P.S.
 - JK-6



Historic and Projected Enrolment



Blair Road P.S.

Issues:

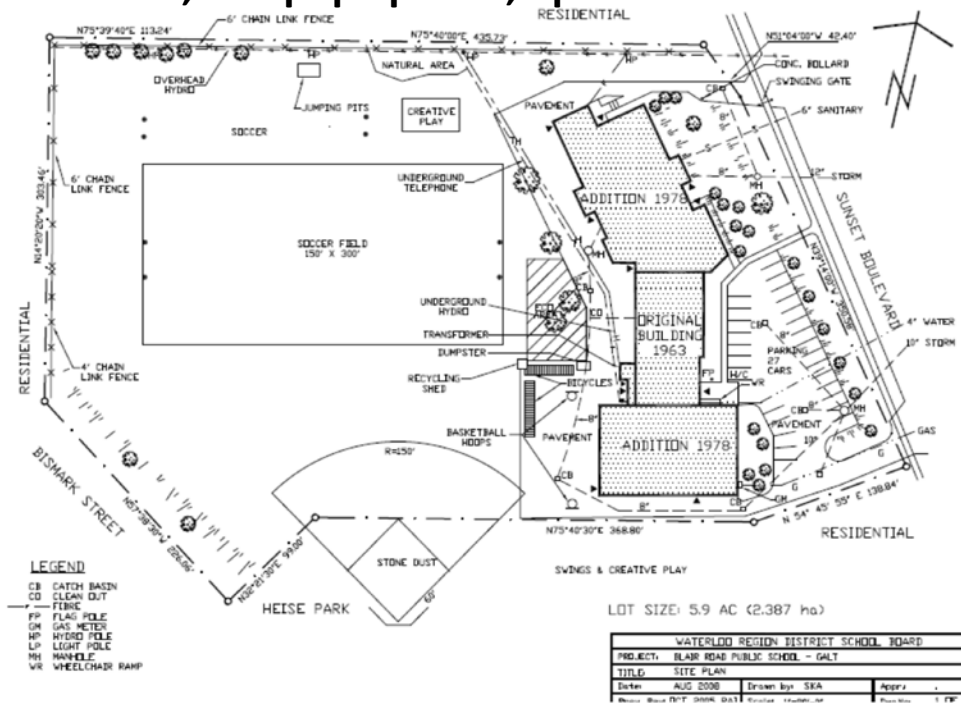
- School organization below 350 pupil places
- Experienced enrolment decline over past 5 years
- Large boundary (incorporates a large rural area)

Opportunities:

- Site can accommodate expansion
- Potential future development area anticipated to increase enrolment



5.9 acres, 276 pupil places, opened 1963



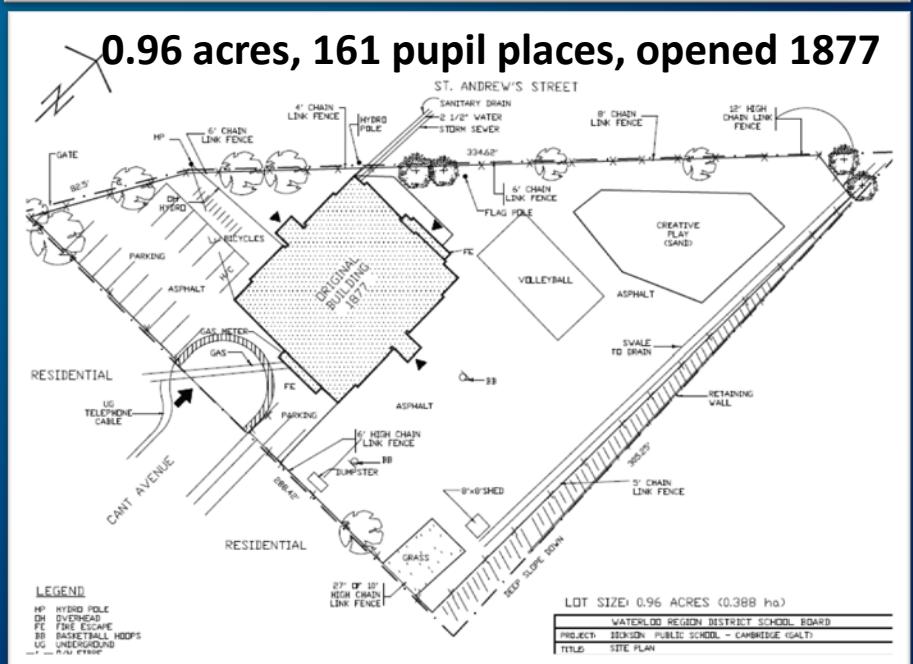
Dickson P.S.

Issues:

- School organization below 350 pupil places
- Classes do not have access to gymnasium for daily physical activity
- Full-Day Kindergarten classes not in purpose-built spaces
- Small site size (0.96 acres) = no room for additions and no play field
- Accessibility (0%)
- No Gr. 6

Opportunities:

- Reduce surplus capacity by adding Gr. 6



Highland P.S.

Issues:

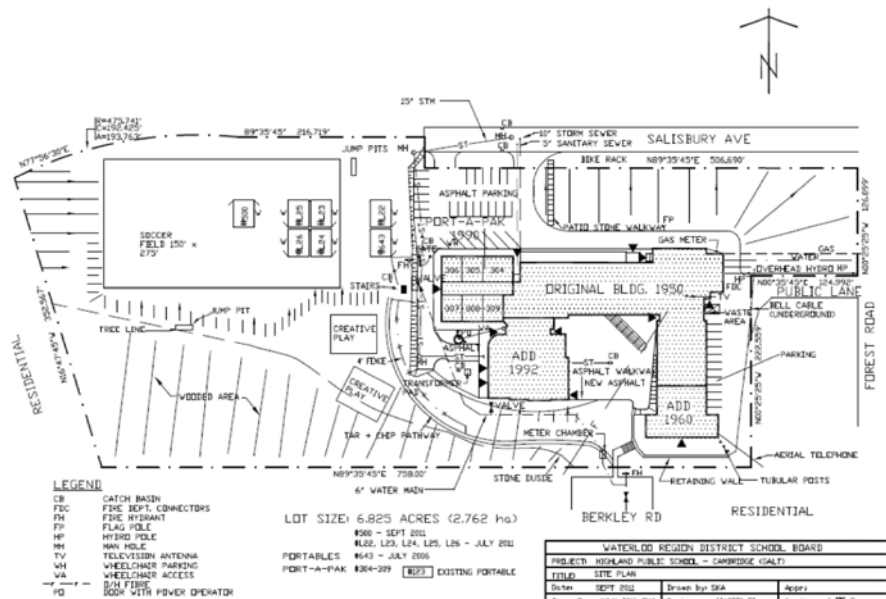
- Over capacity (6 portables)
- Expansion difficult due to site elevations
- Limited parking
- Single gymnasium means classes do not have access to gymnasium for daily physical activity
- Over 34% of home school boundary students transported due to distance
- Over 100 students attending are from out of boundary (enrolled in Partial French Immersion)
- No Gr. 6

Opportunities:

- Reduce enrolment through boundary changes
- Reduce boundary to optimize number of students within walking distance
- Add Gr. 6
- Reduce number of out-of-boundary students by adding another Partial French Immersion site



6.83 acres, 431 pupil places, opened 1950



St. Andrew's P.S.

Issues:

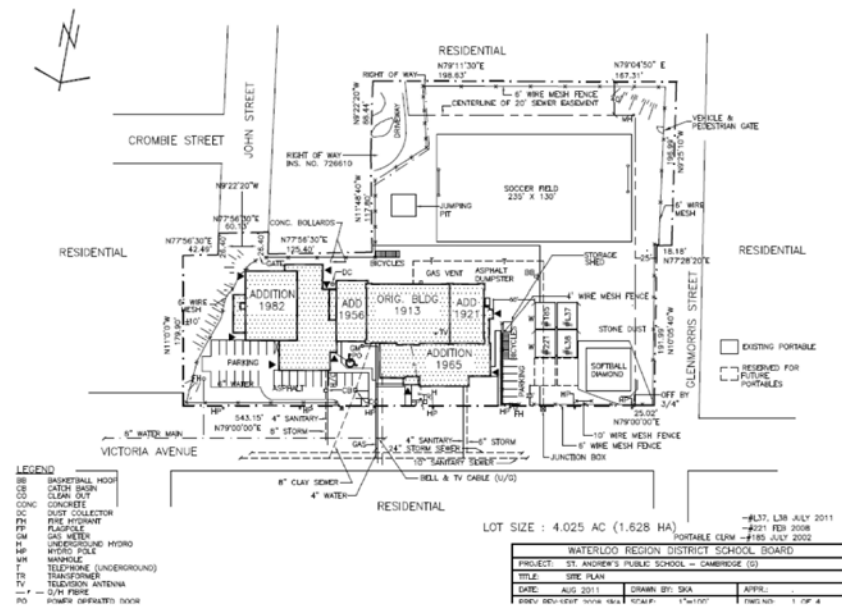
- Overcapacity (4 portables, 6 next year)
- Small site - minimal opportunity for additions/expansion
- Accessibility (43%)
- Inconsistent entry points from feeder schools (Dickson P.S. and Highland P.S. at Gr. 6, Blair Road P.S. and Tait Street P.S. at Gr. 7)

Opportunities:

- Reduce enrolment and address inconsistent entry points by offering only Gr. 7 & 8



4.03 acres, 401 pupil places, opened 1913



Tait Street P.S.

Issues:

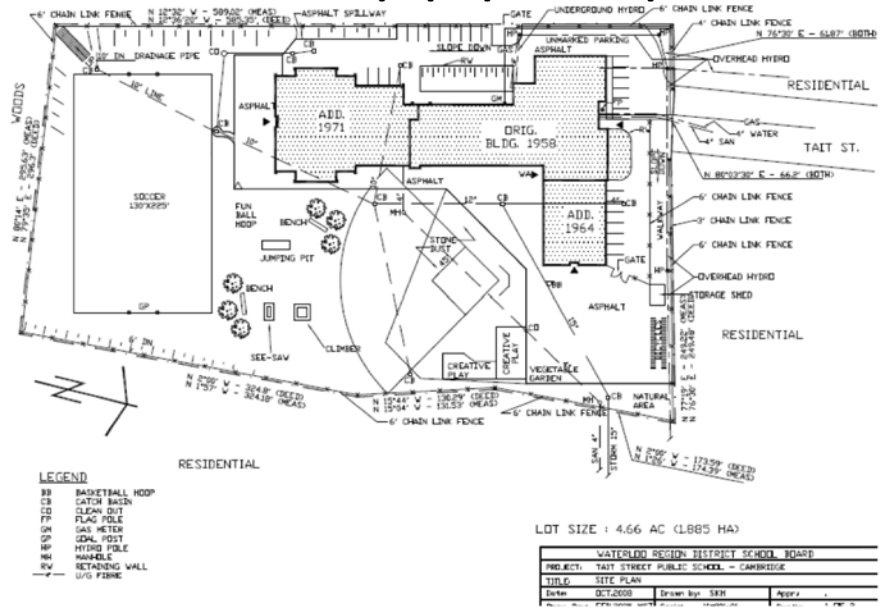
- Enrolment declining
- Transportation to site difficult (no bus loading zone because no frontage)
- Accessibility (83.4%)

Opportunities:

- Reduce transportation requirements by developing a boundary that has majority of walk-in
- Address accessibility through renovations/addition required to implement FDK in 2014



4.66 acres, 348 pupil places, opened 1958



Objectives

- To reorganize the JK-5, 6-8 school organizations in favour of JK-6, JK-8 or 7-8
- To reduce the number of students currently attending Highland P.S. to better match the enrolment to the schools' built capacity
- To reduce the potential for combined grades at schools by moving towards the following criteria (*from Board Policy 3002*):
 - JK-6 facilities between 350 and 400 students (approx. 2 classes/grade)
 - JK-8 facilities between 500 and 650 students (approx. 2 classes/grade JK-6, 2+ classes/grade 7-8)
- To increase the number of students within walking distance to their assigned school
- To reduce the reliance on portable classrooms for long-term student accommodation
- To reduce unused (surplus) capacity by organizing schools and boundaries to achieve utilization rates (enrolment/capacity) that exceed 80% over the long-term (approx. 10 years)
- To maintain those school buildings that can provide appropriate, purpose-built facilities (kindergarten rooms, gyms, libraries, etc.)
- To reduce the cost to achieve legislated accessibility requirements by 2025

Scenarios Considered

Scenario	1	2	3	4	5	6	7	8	9	10	11	12	13	14	15	16	17	18	19	20	21	22	23	Total
Blair Road P.S.																								
JK-8	x		x	x		X	x	X	X	X														8
Dickson P.S.																								
JK-6					X	X					x										x			4
JK-8							x																	1
Closure	x	x	x	x				X	X	X		x	x	X									X	11
Highland P.S.																								
JK-6		x			X	X		X	X	X	x	x	x	X							x		X	12
JK-8	x		x	x			x																	4
St. Andrew's P.S.																								
JK-8	x		x	x									x											4
Gr. 7-8		x			X	X		X	X		x	x									x		X	9
Closure							x			X				X										3
Tait Street P.S.																								
JK-8	x		x	x																				3
Closure							x			X				X										3
New School																								
JK-6								X	X			x											X	4
JK-8	x									X				X										3
Boundary changes	x	x	x	x	X	X	x	X	X	X	x	x	x	X	x	X	x	x	x	X	x	x	X	23

Recommendations

- Scenario 23 involves 6 key recommendations:
 - To close Dickson P.S.
 - To construct a new JK-6 facility
 - To modify the boundary for Blair Road P.S.
 - To modify the boundary and add Gr. 6 to Highland P.S.
 - To modify the boundary for Tait Street P.S.
 - To offer only Grades 7 and 8 at St. Andrew's P.S.

Recommendation #1: Close Dickson P.S.

The West Galt ARC recommends to the WRDSB that:

Dickson Public School be closed and that the JK-5 program be consolidated into Blair Road, Highland, Tait Street and a new school; and that

Students enrolled at Dickson P.S. in Grades 3, 4 and 5 the school year prior to its closure be given the option to enrol at either Blair Road, Highland, or Tait Street Public Schools, or at the new school for Grades 4-6; and that

Transportation be extended to those Dickson P.S. students to the school of their choosing based on transportation eligibility; and that

New Kindergarten registrants the year prior to the closure of Dickson P.S. be given the option to enrol at either Dickson P.S. or the future receiving school.

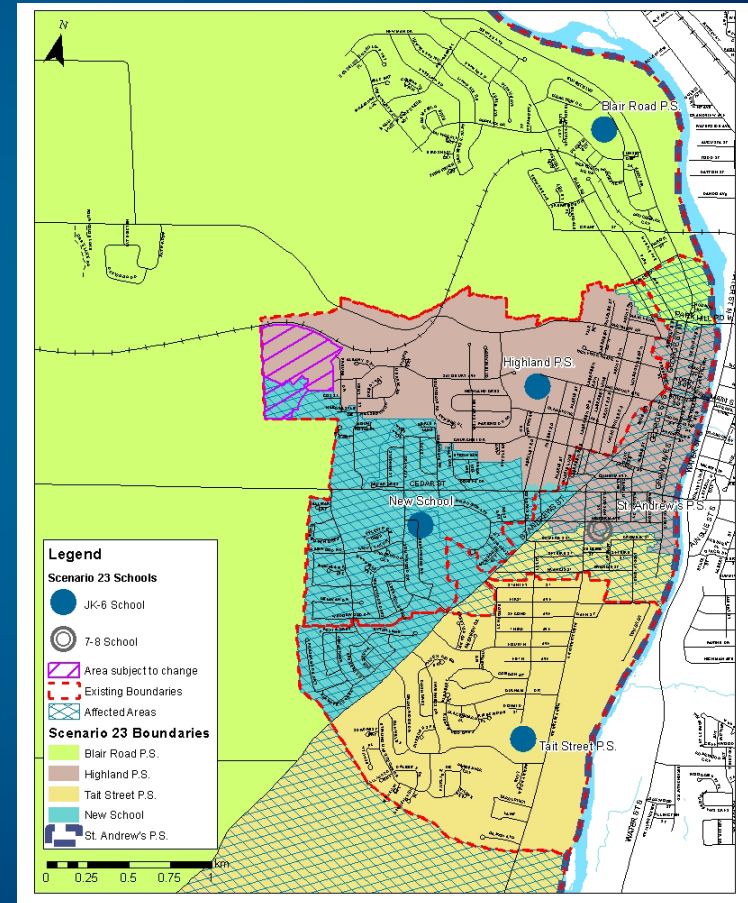


Figure 3: Scenario 23 boundaries

Recommendation #2: Construct a new JK-6 facility

The West Galt ARC recommends to the WRDSB that:

A new Junior Kindergarten to Grade Six (JK-6) facility of approximately 350 pupil places be constructed on Beechwood Road, Cambridge, to open as soon as possible; and that

The boundary for the new facility include portions of the Dickson, Highland and Tait Street Public School boundaries, as illustrated in Figure 5 ; and that

Students entering Grade 5 the year of the change in the affected area be given the option to enrol at either Highland or Tait Street Public Schools, or at the new school for Grades 5-6; and that

Transportation be extended to those Grade 5 and 6 students based on transportation eligibility.

Approximate cost: \$6.5M

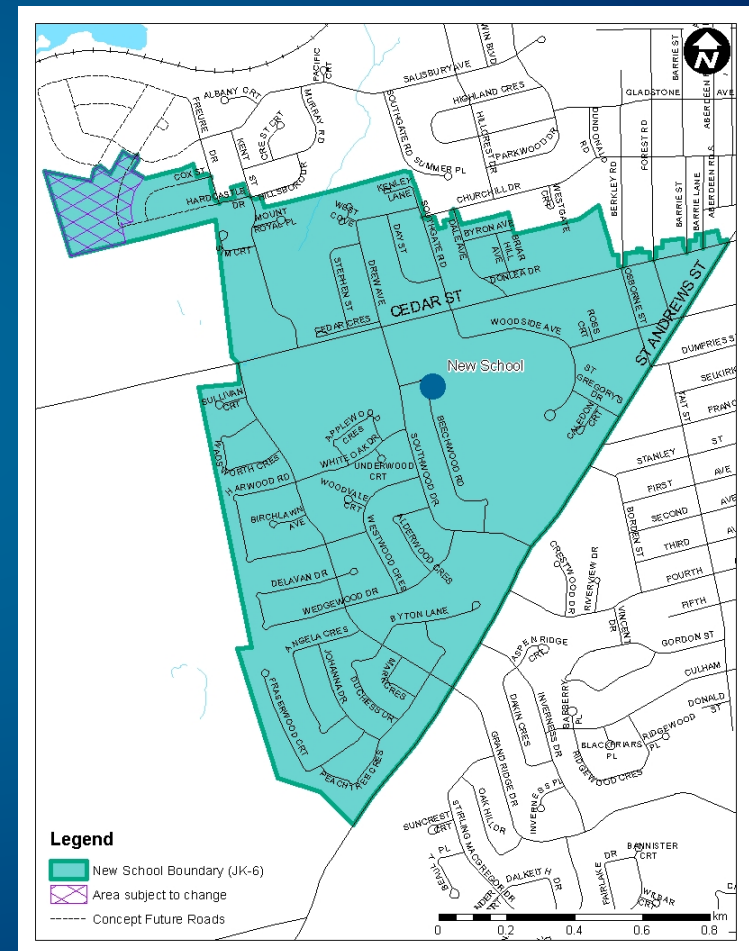
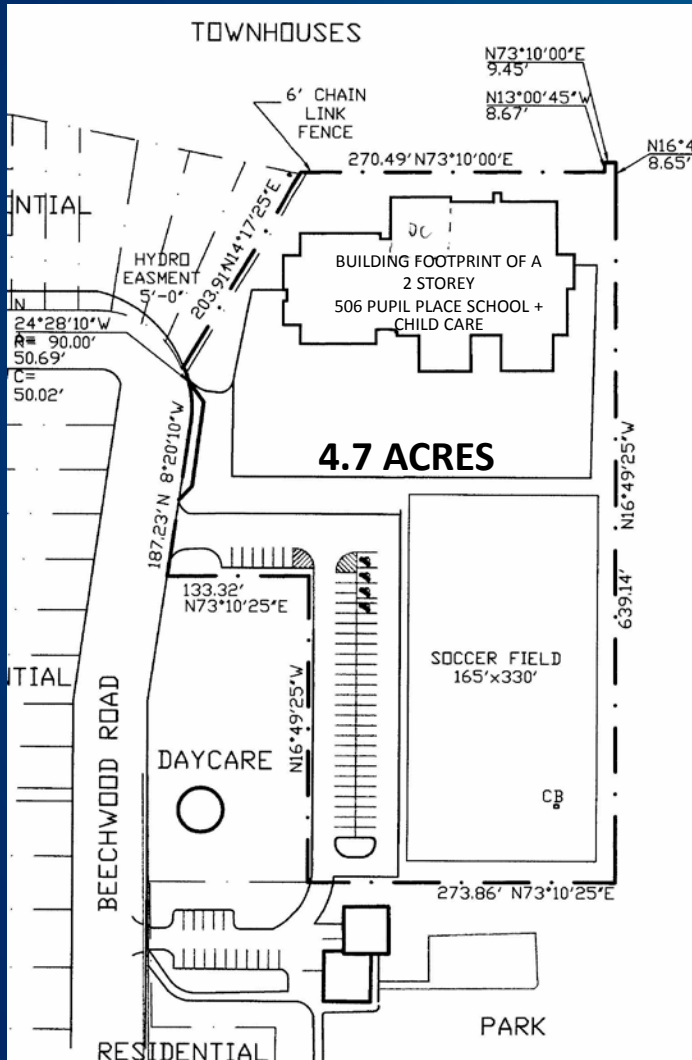


Figure 5: New school boundary recommendation

Beechwood Road Site

Preliminary Concept Site Plan

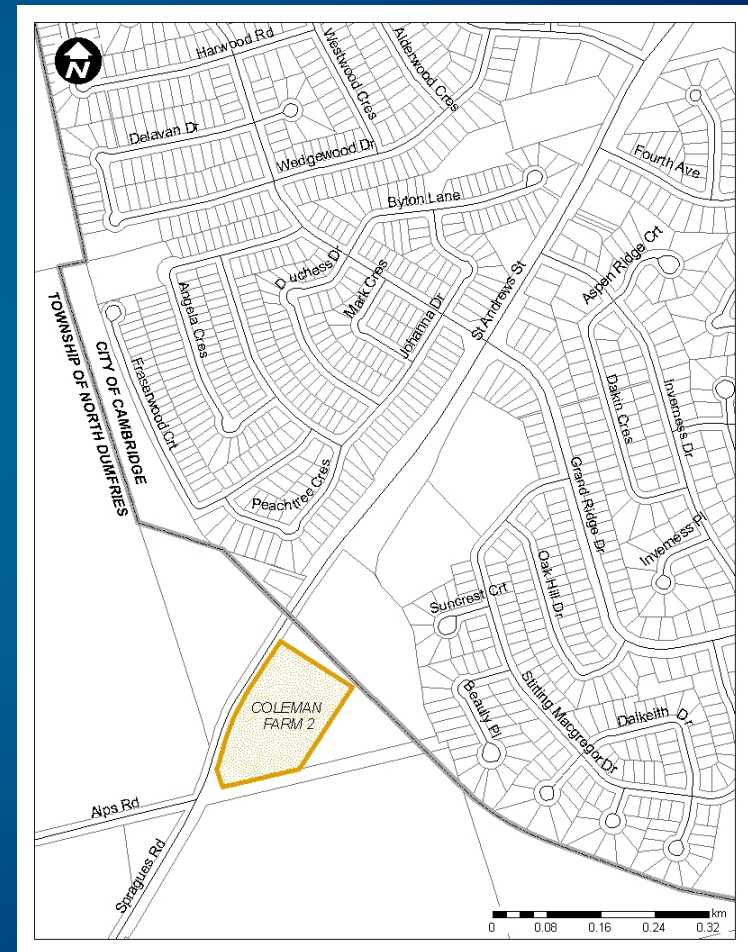


Site in Context



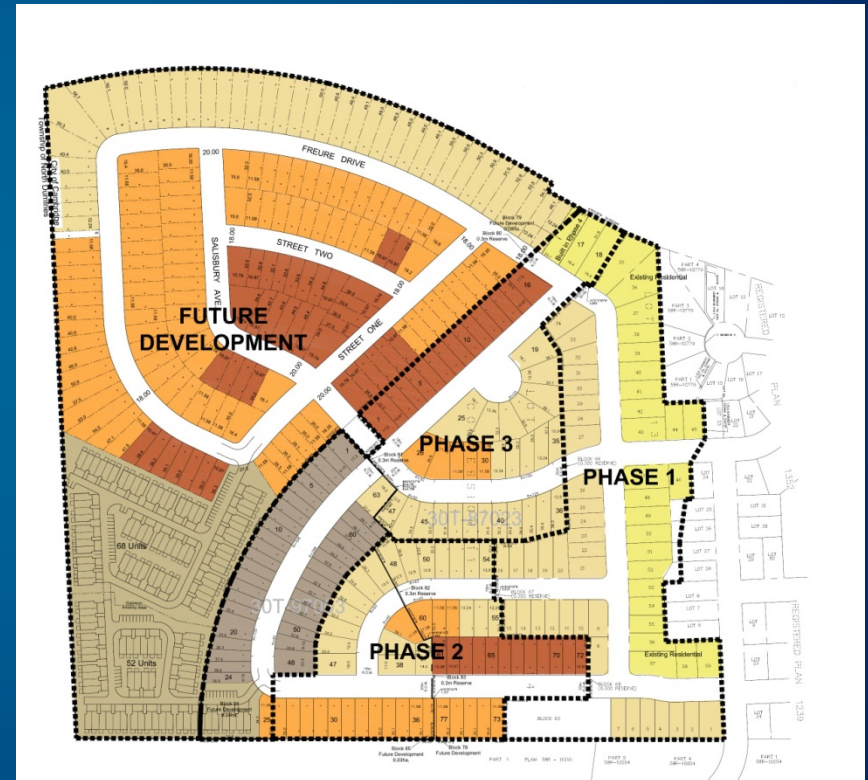
Alternative Sites Considered

- Coleman Farm (Part 2)
 - Property fronts Spragues Rd, North Dumfries
 - 5.93 acres currently owned by the WRDSB
 - Zoned Z1 for Agricultural Uses
 - Falls within Rural-Agricultural designation of Township's Official Plan (school is not a permitted use)
 - Location not ideal



Alternative Sites Considered

- Grand Ridge Estates
 - Proposed plan of subdivision located on the westerly edge of the City of Cambridge
 - No land owned by the WRDSB
 - Board is not eligible to use Education Development Charges to purchase land in this subdivision
 - Location is not desirable
 - Timing is uncertain



Grand Ridge Estates Master Plan - Phasing

Recommendation #3: New boundary for Blair Road P.S.

The West Galt ARC recommends to the WRDSB that:

The Blair Road Public School Junior Kindergarten to Grade 6 boundary be modified as illustrated in Figure 6; and that

New Kindergarten registrants in the affected area (as identified in Figure 6) the year prior to the change be given the option to enrol at either Blair Road P.S. or Dickson P.S. for that school year; and that

Transportation be extended to those new JK/SK registrants choosing to attend Blair Road P.S. based on transportation eligibility.

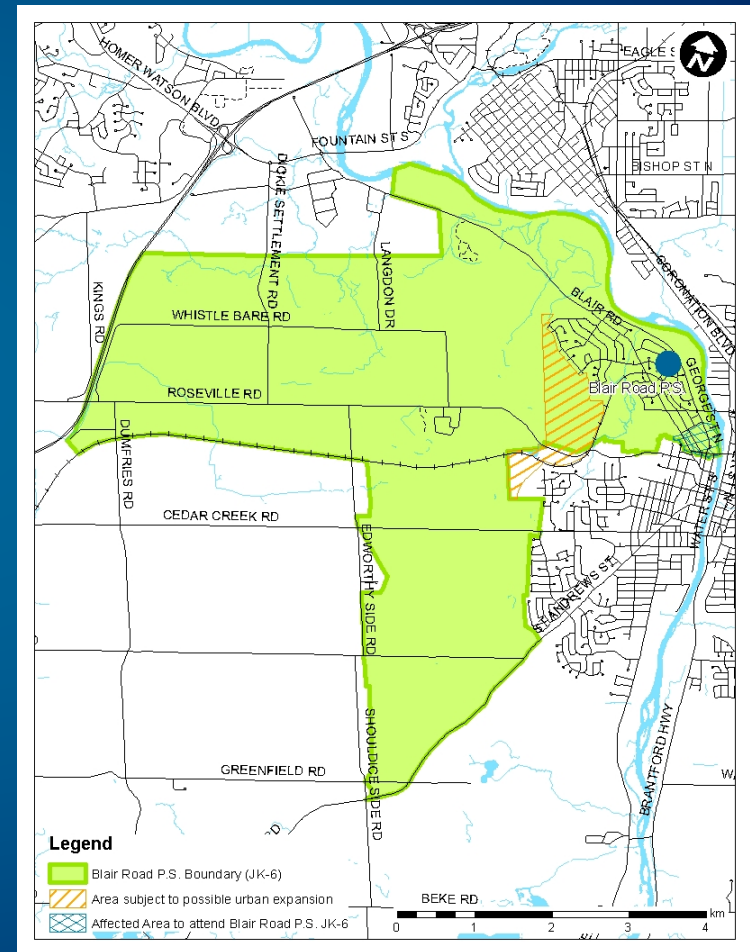


Figure 6: Blair Road P.S. boundary recommendation

Recommendation #4: Grade 6 and new boundary for Highland P.S.

The West Galt ARC recommends to the WRDSB that:

A Grade 6 program be added to Highland Public School; and that

The Highland Public School Junior Kindergarten to Grade 6 boundary be modified as illustrated in Figure 7; and that

New Kindergarten registrants in the affected area (as illustrated in Figure 7) be given the option to enrol at either Dickson P.S. or Highland P.S. the year prior to the boundary change taking place;

Transportation be extended to those new JK/SK registrants choosing to attend Highland P.S. based on transportation eligibility.

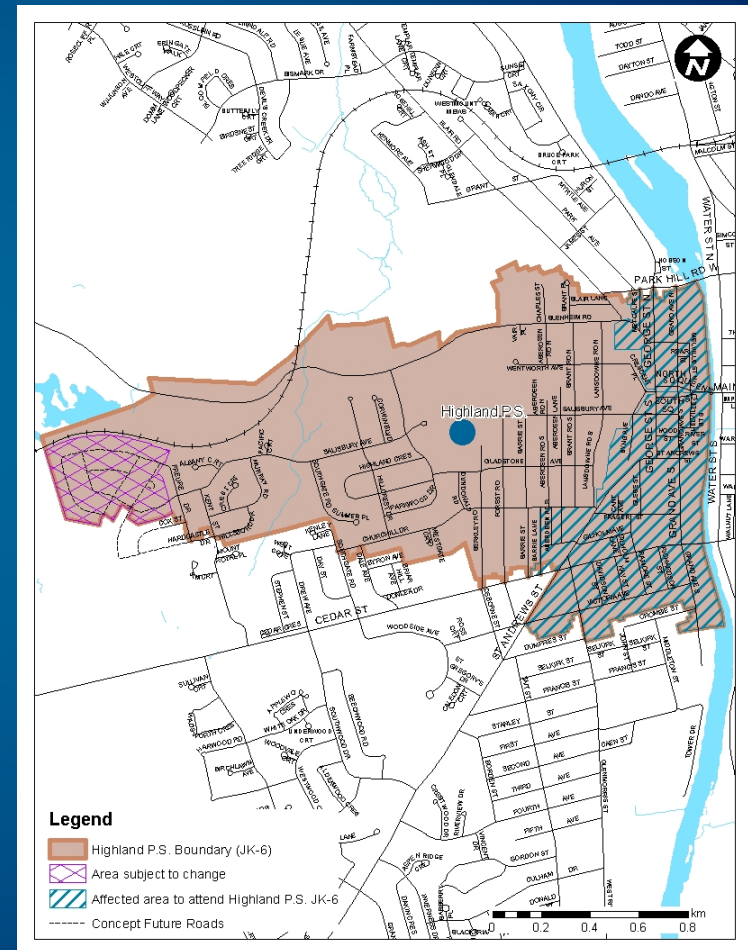


Figure 7: Highland P.S. boundary recommendation

Recommendation #5: New boundary for Tait Street P.S.

The West Galt ARC recommends to the WRDSB that:

The Tait Street Public School Junior Kindergarten to Grade 6 boundary be modified as illustrated in Figure 8; and that

Students enrolled at Blair Road P.S. entering Grade 6 the year of the change in the affected area (as identified in Figure 8) be given the option to enrol at either Blair Road P.S. or Tait Street P.S. for that school year; and that

Transportation be extended to those Grade 6 students choosing to attend Blair Road P.S. based on transportation eligibility; and that

New Kindergarten registrants in the affected area (as identified in Figure 8) the year prior to the change be given the option to enrol at either Blair Road P.S., Dickson P.S. or Tait Street P.S. for that school year; and that

Transportation be extended to those new JK/SK registrants choosing to attend Tait Street P.S. based on transportation eligibility.

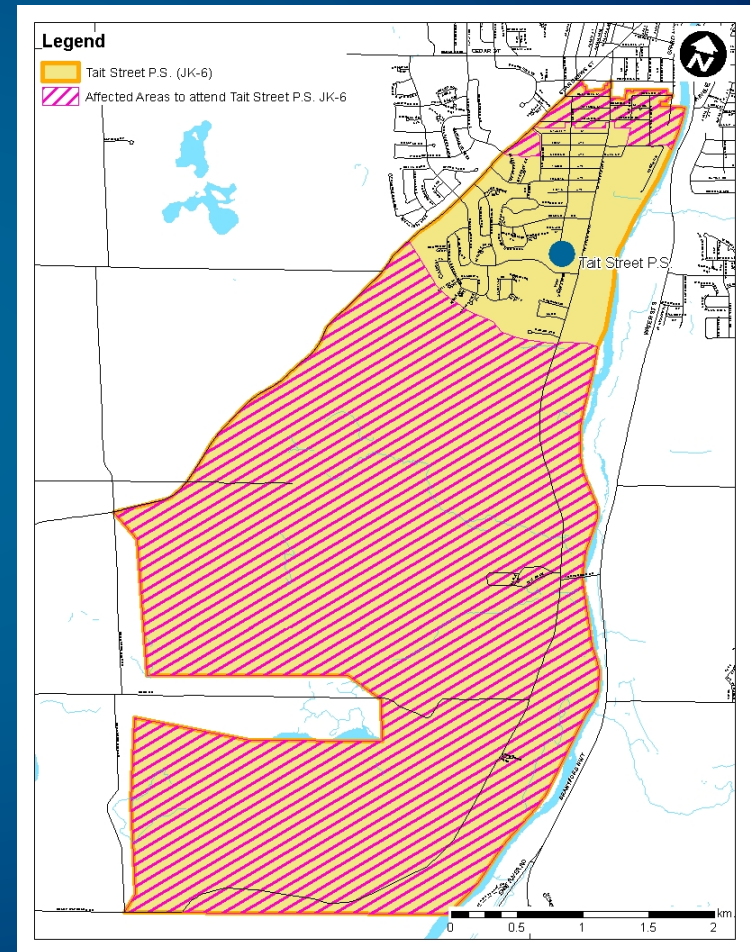


Figure 8: Tait Street P.S. boundary recommendation

Recommendation #6: Gr. 7 and 8 only at St. Andrew's P.S.

The West Galt ARC recommends to the WRDSB that:

St. Andrew's Public School offer the Grade 7 and 8 program for the review area, with a boundary as shown on Figure 9.

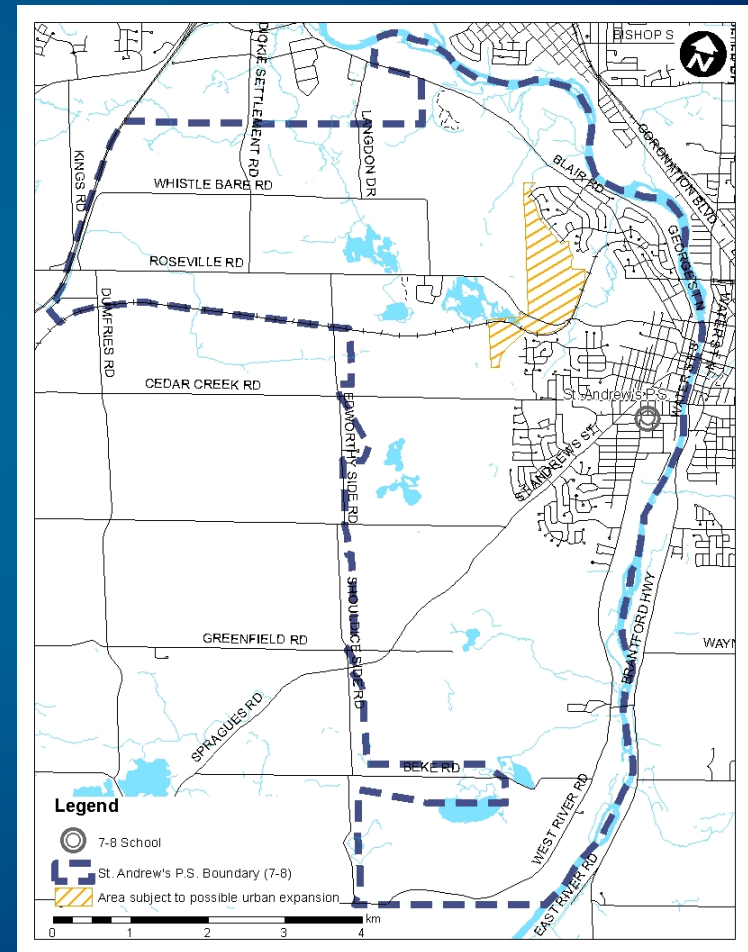


Figure 9: St. Andrew's P.S. boundary recommendation

Enrolment Projections – Scenario 23

School	Capacity	Projected Total Enrolment by Year						
		2015	2016	2017	2018	2019	2020	2021
Blair Road P.S.	276	235	240	244	243	242	242	241
Highland P.S.	431	493	500	505	488	479	475	477
St. Andrew's P.S.	401	296	308	317	346	364	351	332
Tait Street P.S.	348	288	297	297	299	313	323	336
New School	350	302	315	314	326	333	338	342
Total	1806	1614	1660	1677	1702	1731	1729	1728

School	# classrooms*	Estimated Number of Classrooms Required			
		2015	2016	2017	2018
Blair Road P.S.	11	11	11	11	11
Highland P.S.	19	22	22	23	21
St. Andrew's P.S.	15	11	12	12	14
Tait Street P.S.	13	14	14	15	15
New School	15	15	15	15	16
Total	73	73	74	76	77

* Does not include rooms used for Special Education or Computer Labs. Calculated based on average loading of classes per grade (FDK = 26, Gr. 1-3 = 20 and Gr. 4-8 = 23)

Achieving the Objectives

Objective	Meets	Doesn't Meet
To reorganize the JK-5, 6-8 school organizations in favour of JK-6, JK-8 or 7-8	X	
To reduce the number of students currently attending Highland P.S. to better match the enrolment to the schools' built capacity	X	
To reduce the potential for combined grades at schools by moving towards the following criteria (from Board Policy 3002): <ul style="list-style-type: none"> • JK-6 facilities between 350 and 400 students (approx. 2 classes/grade) • JK-8 facilities between 500 and 650 students (approx. 2 classes/grade JK-6, 2+ classes/grade 7-8) 	X*	X*
To increase the number of students within walking distance to their assigned school	X	
To reduce the reliance on portable classrooms for long-term student accommodation	X	
To reduce unused (surplus) capacity by organizing schools and boundaries to achieve utilization rates (enrolment/capacity) that exceed 80% over the long-term (approx. 10 years)	X	
To maintain those school buildings that can provide appropriate, purpose-built facilities (kindergarten rooms, gyms, libraries, etc.)	X	
To reduce the cost to achieve legislated accessibility requirements by 2025	X	

* An improvement from the existing situation

Conclusion

- Addition of a new school on Beechwood Rd provides a community school for the growing western portion of the Review Area
- ARC's recommendations provide Board with ability to move forward and address the issues identified at the outset of the review
- If Board does not receive necessary capital from MOE, interim measures may be necessary to address overcrowding at Highland P.S.

Next Steps

- 60-Day period (not including summer)
June 18 - October 23, 2012
- Administration will review ARC's report and prepare the Administration analysis and recommendations which will be presented to the Board
- Committee of the Whole meeting **Monday November 12, 2012** possible date for consideration of recommendations