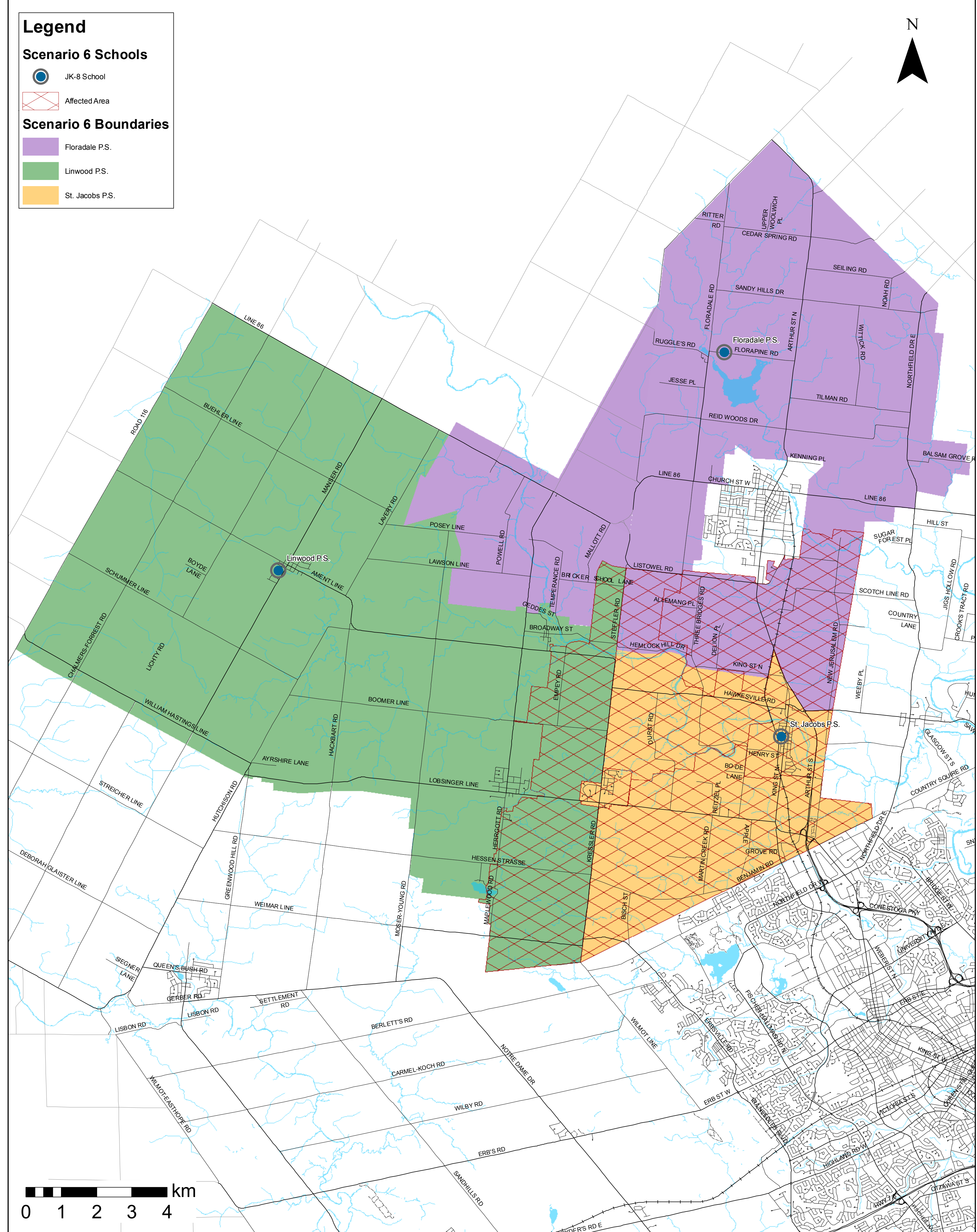


BOUNDARIES



Woolwich/Wellesley Elementary Schools Accommodation Review

Scenario 6

DESCRIPTION

- Three Bridges PS closes and students are directed to remaining schools
- St. Jacobs PS boundary altered – northern area reassigned to Floradale PS and western area assigned to Linwood PS

ENROLMENT PROJECTIONS

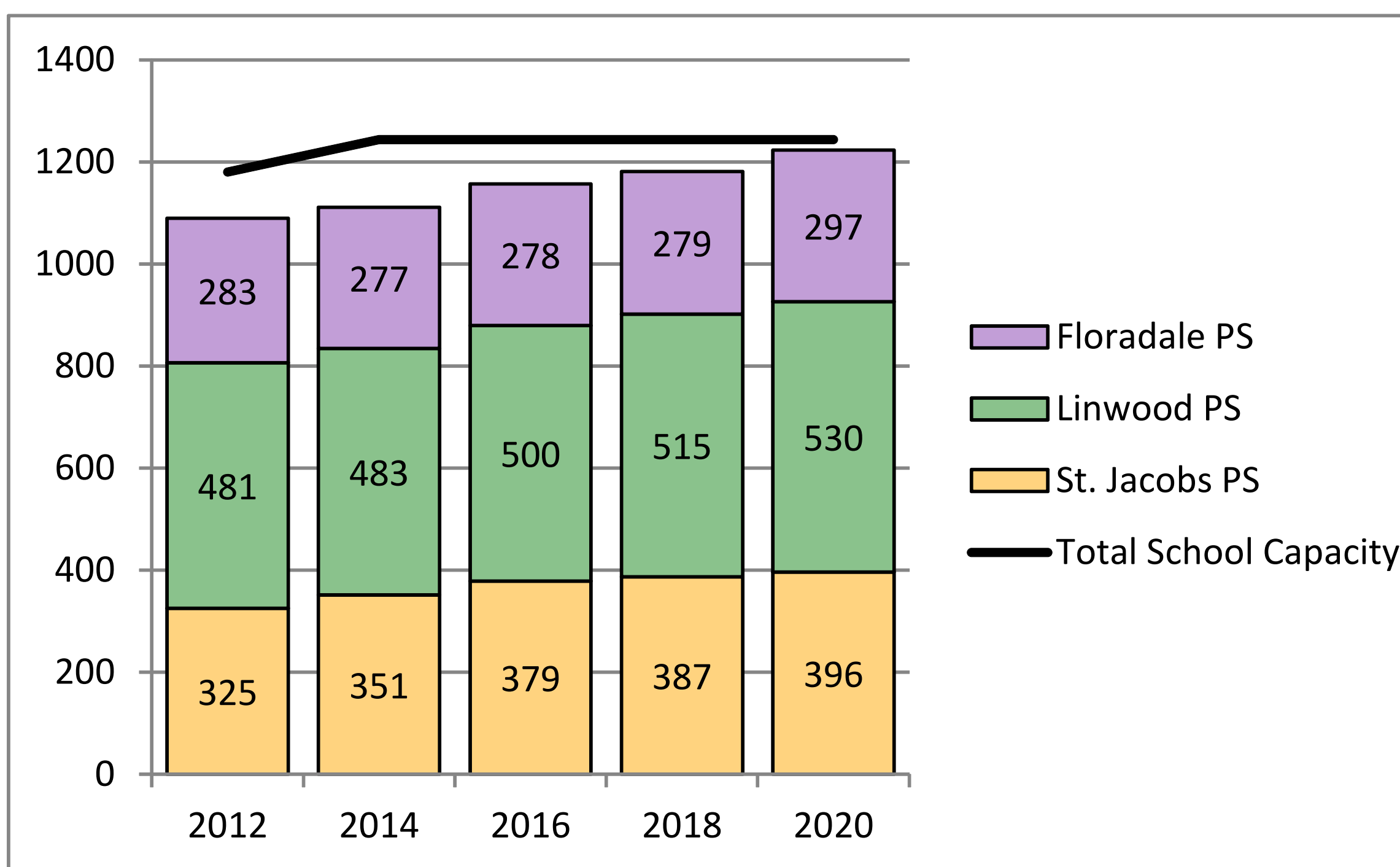
School	2012			2014			2016			2018			2020		
	JK-6	7-8	Total	JK-6	7-8	Total	JK-6	7-8	Total	JK-6	7-8	Total	JK-6	7-8	Total
Floradale PS	216	67	283	211	66	277	202	76	278	227	52	279	235	62	297
Linwood PS	381	100	481	390	93	483	404	96	500	418	97	515	423	107	530
St. Jacobs PS	257	68	325	273	78	351	297	82	379	305	82	387	309	87	396
Three Bridges PS	CLOSED														
TOTAL	854	235	1089	874	237	1111	903	254	1157	950	231	1181	967	256	1223

FACILITY INFORMATION

School	Capacity		Site Size (acres)	Accessibility
	Without FDK	With FDK		
Floradale PS	322	322	9.4	100%
Linwood PS	510	519	11.17	96%
St. Jacobs PS	348	403	4.65	66%
Three Bridges PS	CLOSED			
TOTAL	1180	1244		

* FDK refers to Full-Day Kindergarten. Revised capacities include additions to implement the FDK program. (Linwood in 2012 and St. Jacobs in 2014)

PROJECTED ENROLMENT



Notes:
 OTG Capacity = On the Ground Capacity – Ministry of Education assigned loading of students in permanent space in a facility
 A factor has been applied to each school's enrolment to account for out of boundary student gains and losses due to magnet programs such as French Immersion (FI) and Special Education Area Classes (SpecEd)
 Enrolment projections are approximations calculated based on the most current information available