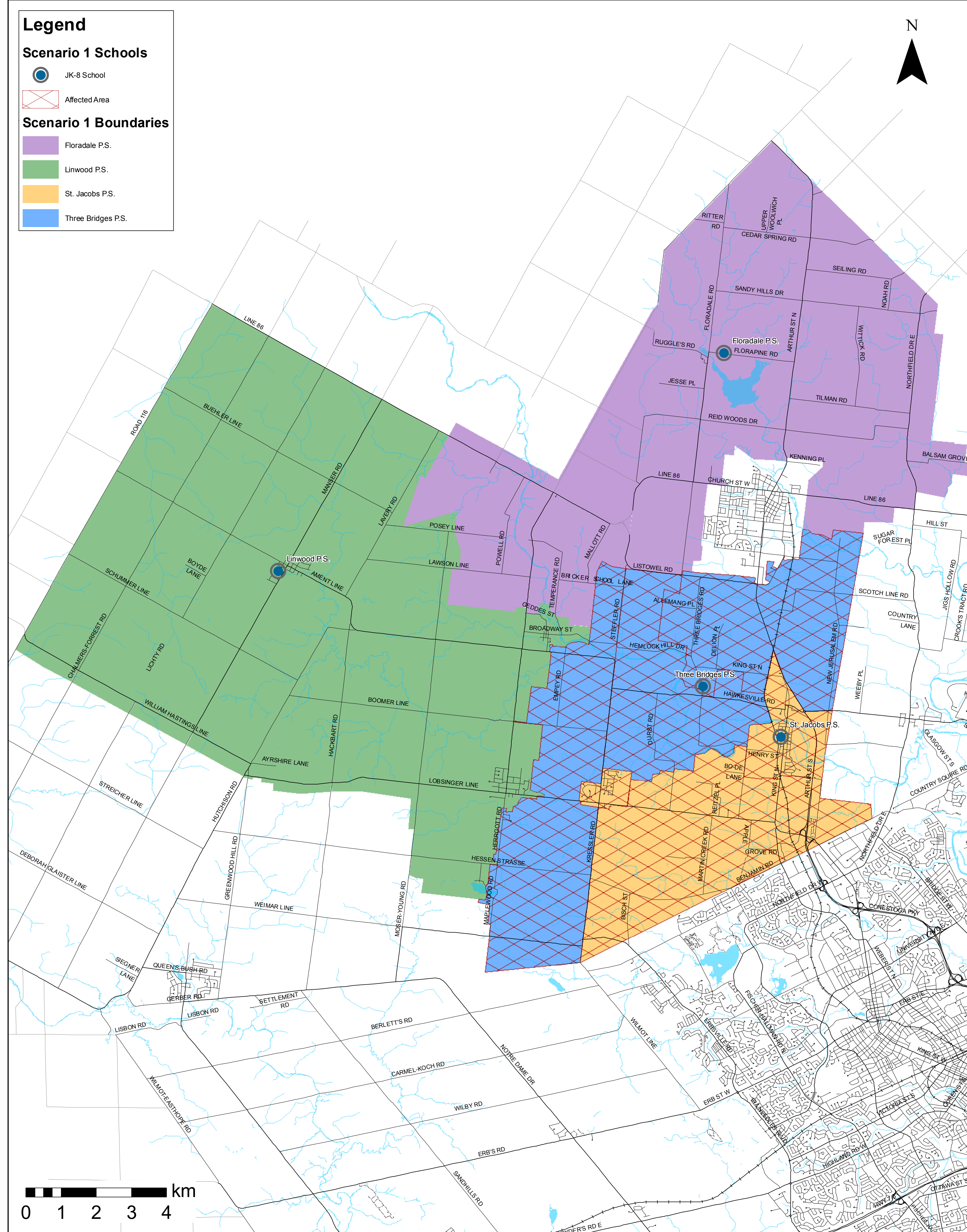


BOUNDARIES



Woolwich/Wellesley Elementary Schools Accommodation Review

Scenario 1

DESCRIPTION

- Defined boundary for Three Bridges PS – created from existing St. Jacobs PS boundary
- St. Jacobs PS boundary reduced
- All other areas remain the same

ENROLMENT PROJECTIONS

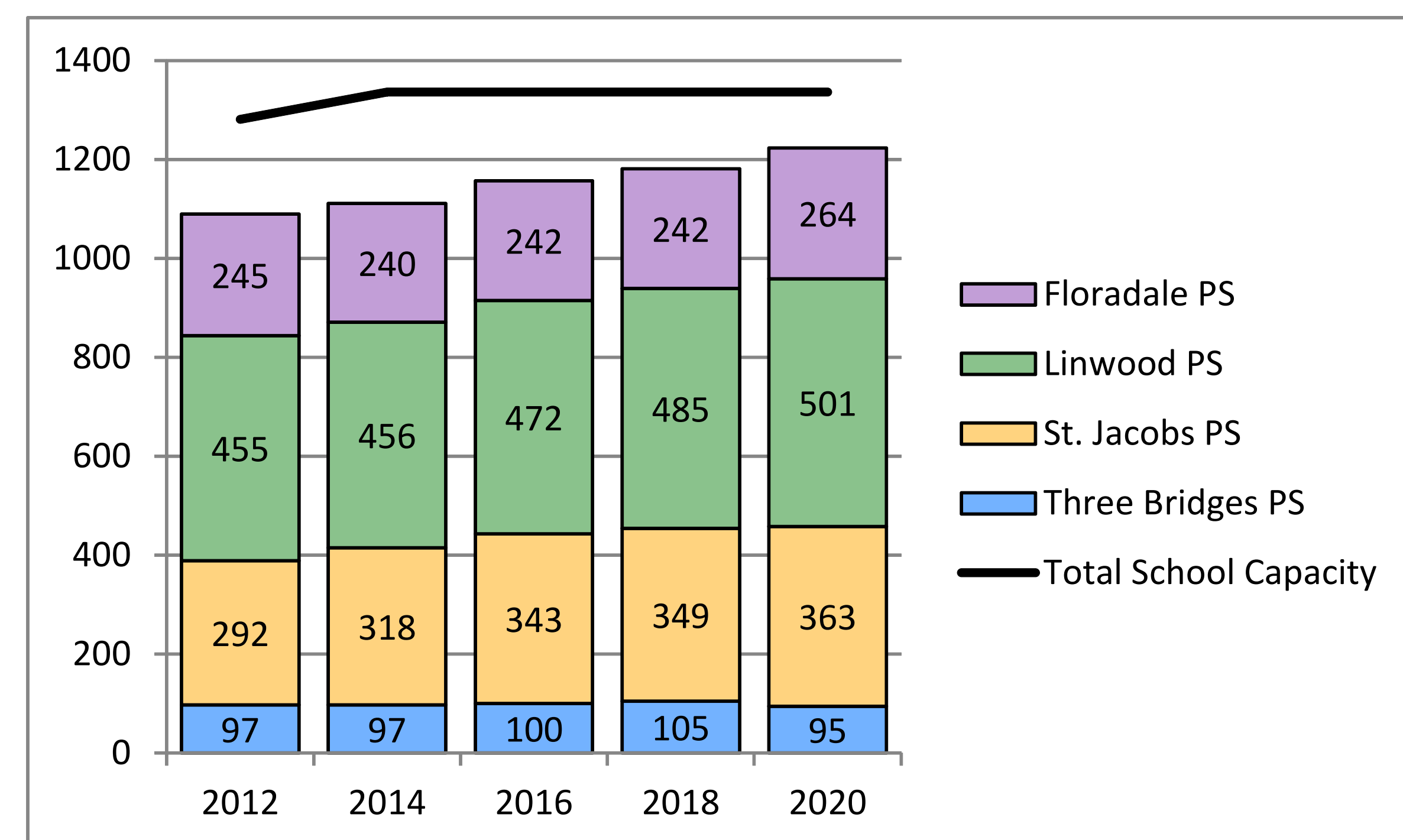
School	2012			2014			2016			2018			2020		
	JK-6	7-8	Total	JK-6	7-8	Total	JK-6	7-8	Total	JK-6	7-8	Total	JK-6	7-8	Total
Floradale PS	189	56	245	182	58	240	177	65	242	201	41	242	212	52	264
Linwood PS	359	96	455	369	87	456	381	91	472	397	88	485	400	101	501
St. Jacobs PS	235	57	292	247	71	318	267	76	343	280	69	349	289	74	363
Three Bridges PS	71	26	97	76	21	97	78	22	100	72	33	105	66	29	95
TOTAL	854	235	1089	874	237	1111	903	254	1157	950	231	1181	967	256	1223

FACILITY INFORMATION

School	Capacity		Site Size (acres)	Accessibility
	Without FDK	With FDK		
Floradale PS	322	322	9.4	100%
Linwood PS	510	519	11.17	96%
St. Jacobs PS	348	403	4.65	66%
Three Bridges PS	92	92	2.84	81%
TOTAL	1272	1336		

* FDK refers to Full-Day Kindergarten. Revised capacities include additions to implement the FDK program. (Linwood in 2012 and St. Jacobs in 2014)

PROJECTED ENROLMENT



Notes:
 OTG Capacity = On the Ground Capacity – Ministry of Education assigned loading of students in permanent space in a facility
 A factor has been applied to each school's enrolment to account for out of boundary student gains and losses due to magnet programs such as French Immersion (FI) and Special Education Area Classes (SpecEd)
 Enrolment projections are approximations calculated based on the most current information available