

Woolwich and Wellesley Townships
Elementary Schools Pupil
Accommodation Review

Accommodation Report and
Recommendations of the
Accommodation Review Committee

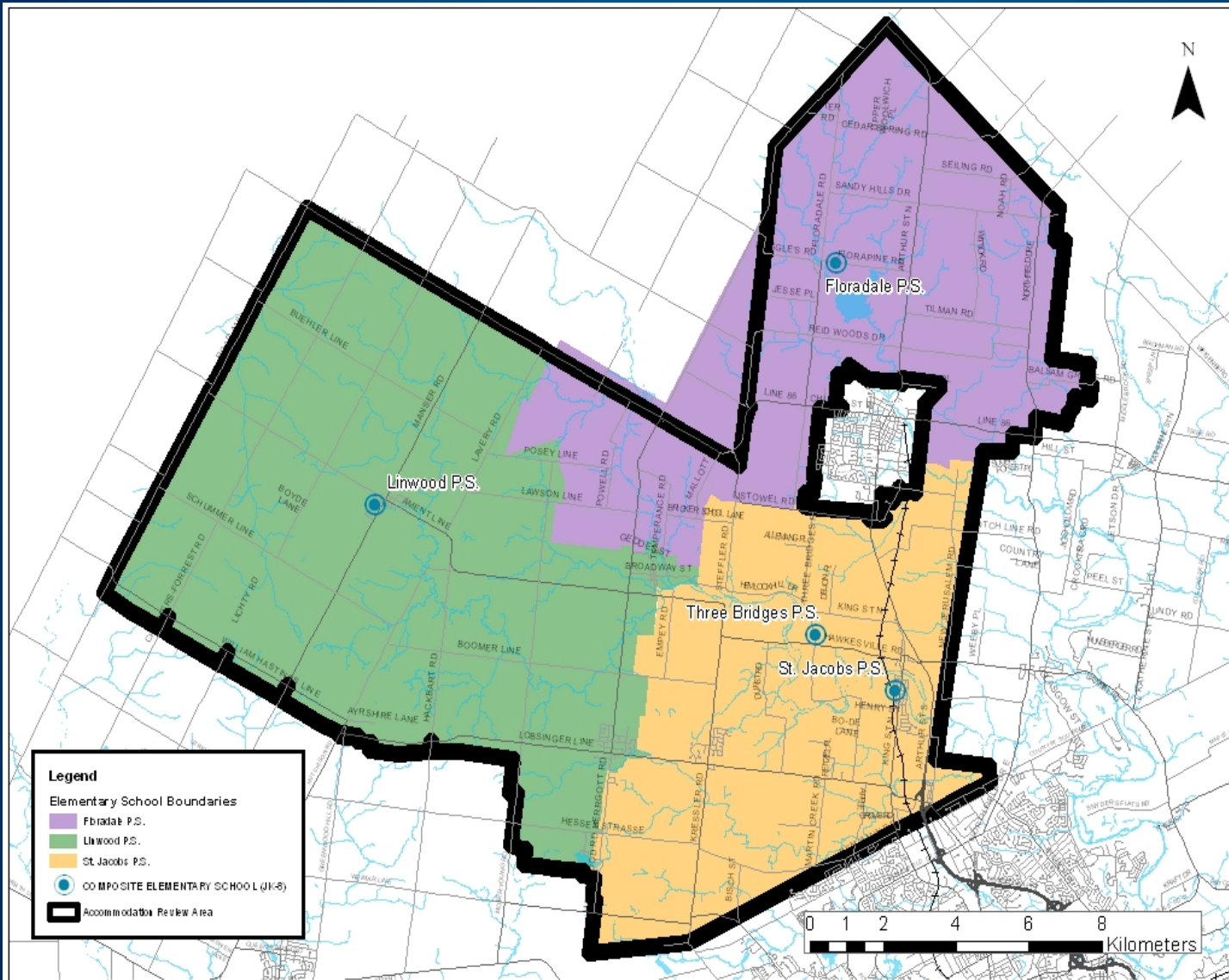
March 18, 2013

Woolwich and Wellesley Townships

Accommodation Review Committee Members

- **Parents**
 - Christine Shantz
 - Brenda Martin
 - Krista Edwards
 - Cindy Weber
 - John Krupicz
 - Sheila Bauman
 - Keith Trask
 - Elmer Horst
 - Steven Snyder
 - Andrew Horst
- **City of Cambridge**
 - John Scarfone
 - Sarah Peck
- **Principals**
 - Vlad Kovac
 - Geoff Suderman-Gladwell
 - Paul Milne
 - Wayne Dunham
- **Superintendent**
 - Diane DeCoene
- **Facilities/Planning**
 - Dennis Cuomo
 - Ron Dallan
 - Lauren Manske
 - Nathan Hercanuck
- **Other Board Staff (who attended ARC meetings)**
 - Andrea Kean
 - Susan Marchiori
 - Ian Gaudet
 - Barry Easter
 - Mel Lavoie
 - Abigail Dancey
 - Lynsey Meikle
 - Nick Landry

Woolwich Wellesley Townships Accommodation Review Area



- 4 Schools
- Floradale P.S.
JK-8
- Linwood P.S.
JK-8
- St. Jacobs P.S.
JK-8
- Three
Bridges P.S.
1-8

Rationale for an Accommodation Review

- Small school organizations
- Declining enrolment/Surplus space
- Facility condition and equity

- Other Issues raised by ARC
 - Transportation distances (bus ride time)
 - Unique nature of Three Bridges P.S.

Rational for an Accommodation Review

- Small school organizations

School	OTG* Capacity	2012/2013 Enrolment (Total/FTE)	Organization
Floradale P.S.	322 (340)**	270/270	JK-8
Linwood P.S.	527 (551)**	429/429	JK-8
St. Jacobs P.S.	351 (406)**	315/282	JK-8
Three Bridges P.S.	69	83	1-8
Total	1269 (1366)**	1097/1064**	

*OTG – On The Ground capacity does not include portables/portapacks

**Anticipated school capacity after FDK implemented (after Sept. 2014)

Rational for an Accommodation Review

- Declining enrolment/Surplus space

Total Enrolment Review Area Schools 2002-2012

School	2002	2004	2006	2008	2010	2012	Change 2002- 2012
Floradale P.S.	220	243	283	261	251	270	23%
Linwood P.S.	603	588	559	504	469	429	-29%
St. Jacobs P.S.	316	316	318	333	319	315	-0%
Three Bridges P.S.	114	107	109	101	83	83	-27%
Total	1253	1254	1269	1199	1122	1097	-12.5%

Rational for an Accommodation Review

- Declining enrolment/Surplus space

Total Enrolment Review Area Schools 2002-2012 (Pre-, Post-SALEP)

School	2002	2004	2006	2008	2010	2012	Change 2002- 2006	Change 2008- 2012
Floradale P.S.	220	243	283	261	251	270	28%	3%
Linwood P.S.	603	588	559	504	469	429	-7	-14%
St. Jacobs P.S.	316	316	318	333	319	315	0%	-5%
Three Bridges P.S.	114	107	109	101	83	83	-4%	-18%
Total	1253	1254	1269	1199	1122	1097	1%	-8.5%

Rational for an Accommodation Review

- Declining enrolment/Surplus space

Woolwich and Wellesley Review Area Enrolment projections

School	Capacity with FDK	2012	2014	2016	2018	2020
Floradale P.S.	340	270	256	256	251	272
Linwood P.S.	551	429	404	418	425	429
St. Jacobs P.S.	406	315	327	360	368	380
Three Bridges P.S.	69	83	88	96	97	90
Total	1366	1097	1075	1130	1141	1171

Rational for an Accommodation Review

- Facility condition and equity

Review Area Schools examined with Respect to:

- Current and projected future maintenance needs
- Future expenses related to mandated programs
 - Full Day Kindergarten
 - Accessibility
- Facility equity/System Benchmarks
 - Gym space
 - Library space

Floradale P.S.

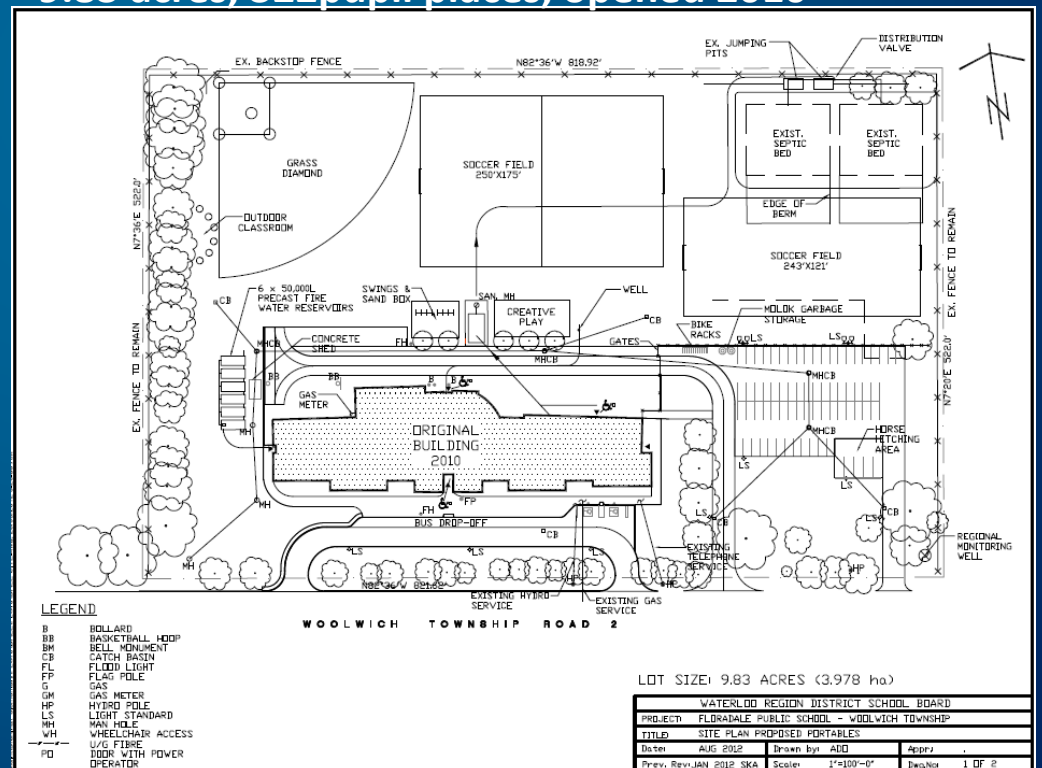
- Rebuilt in 2010
- Site Size : 9.83 acres
- FDK compatible
- Fully Accessible



9.83 acres, 322pupil places, opened 2010

Facility:

- Projected Maintenance costs (10 yr)
 - \$730,000
- Library/Gym spaces considered adequate



Linwood P.S.

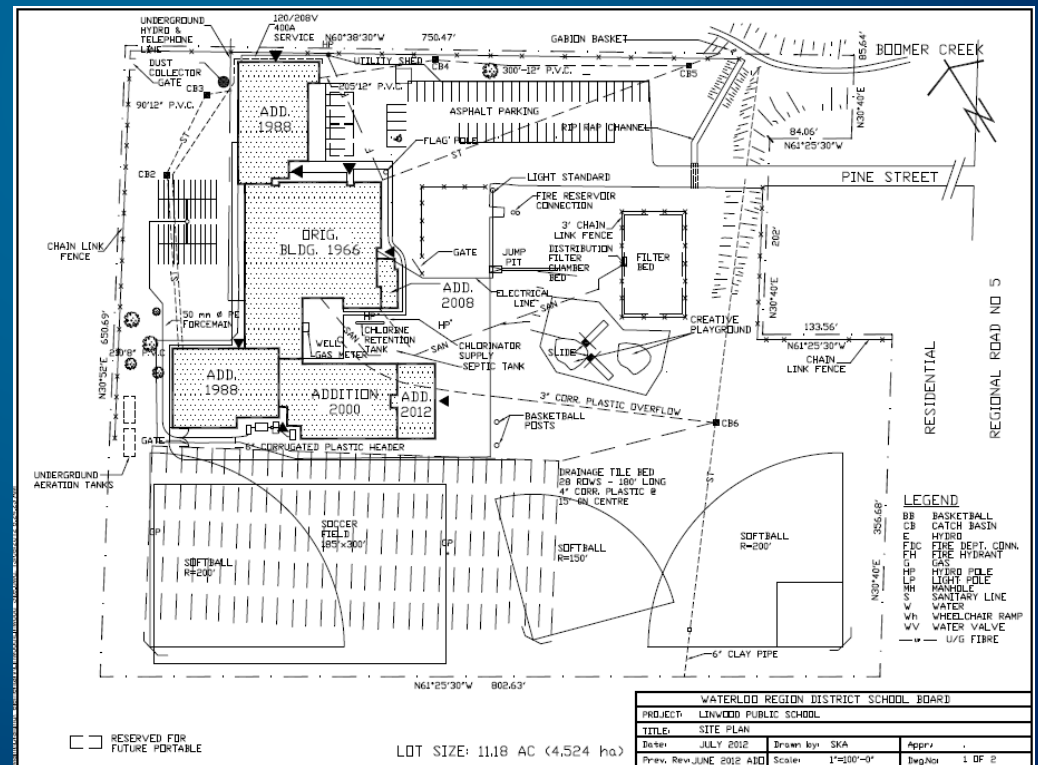
- Constructed in 1966. Additions in 1988, 2000, 2011
- Site Size : 11.17 acres
- FDK compatible (2011)
- 96 % Accessible



11.17 acres, 551 pupil places, opened 1966

Facility:

- Projected Maintenance costs (10 yr)
 - \$3,160,000
- Library/Gym spaces considered adequate



St. Jacobs P.S.

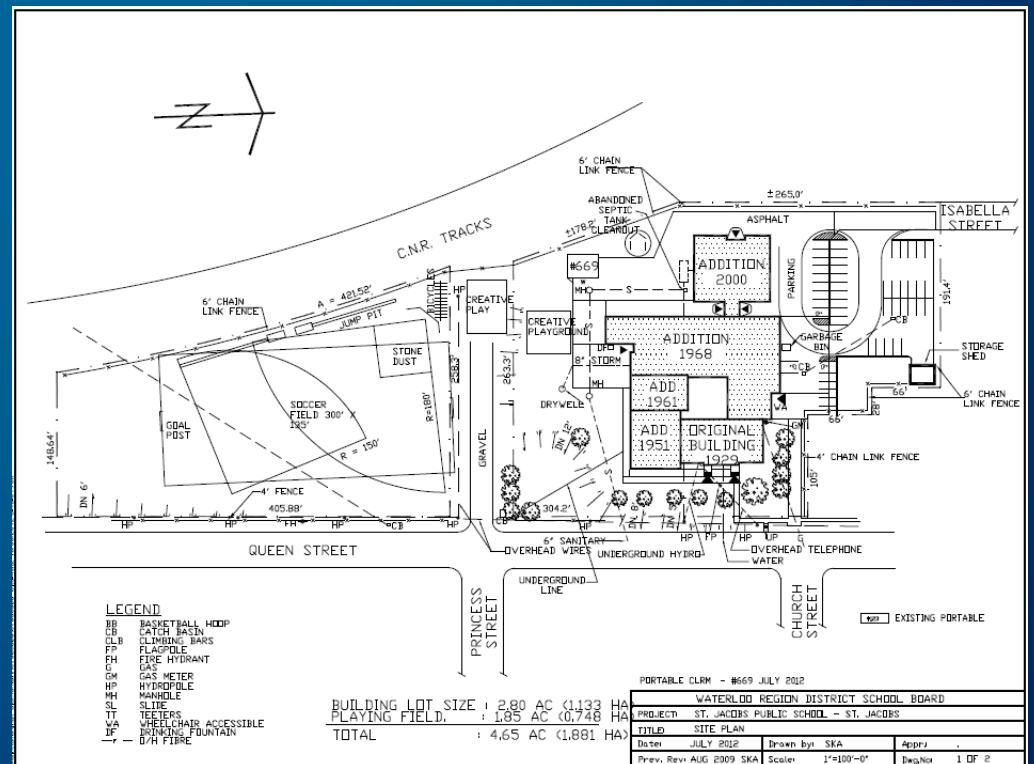
- Constructed in 1929. Additions in 1951, 1961, 1968, 2000
- Site Size : 4.65 acres
- FDK implementation 2014 (addition on hold pending Review outcome)
- 66 % Accessible

Facility:

- Projected Maintenance costs (10 yr)
 - \$2,100,000
- Library/Gym spaces considered inadequate



4.65 acres, 351 pupil places, opened 1929



Three Bridges P.S.

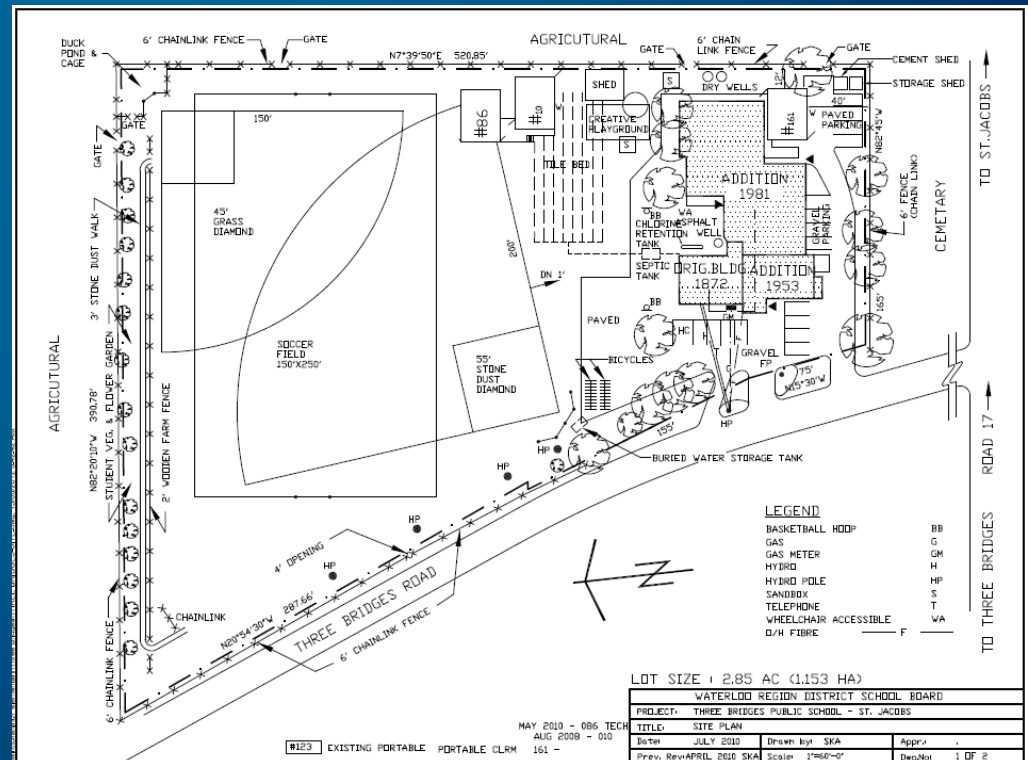
- Constructed in 1872. Additions in 1951, 1981
- Site Size : 2.85 acres
- No FDK implementation (Gr. 1-8)
- 81 % Accessible



2.85 acres, 69 pupil places, opened 1872

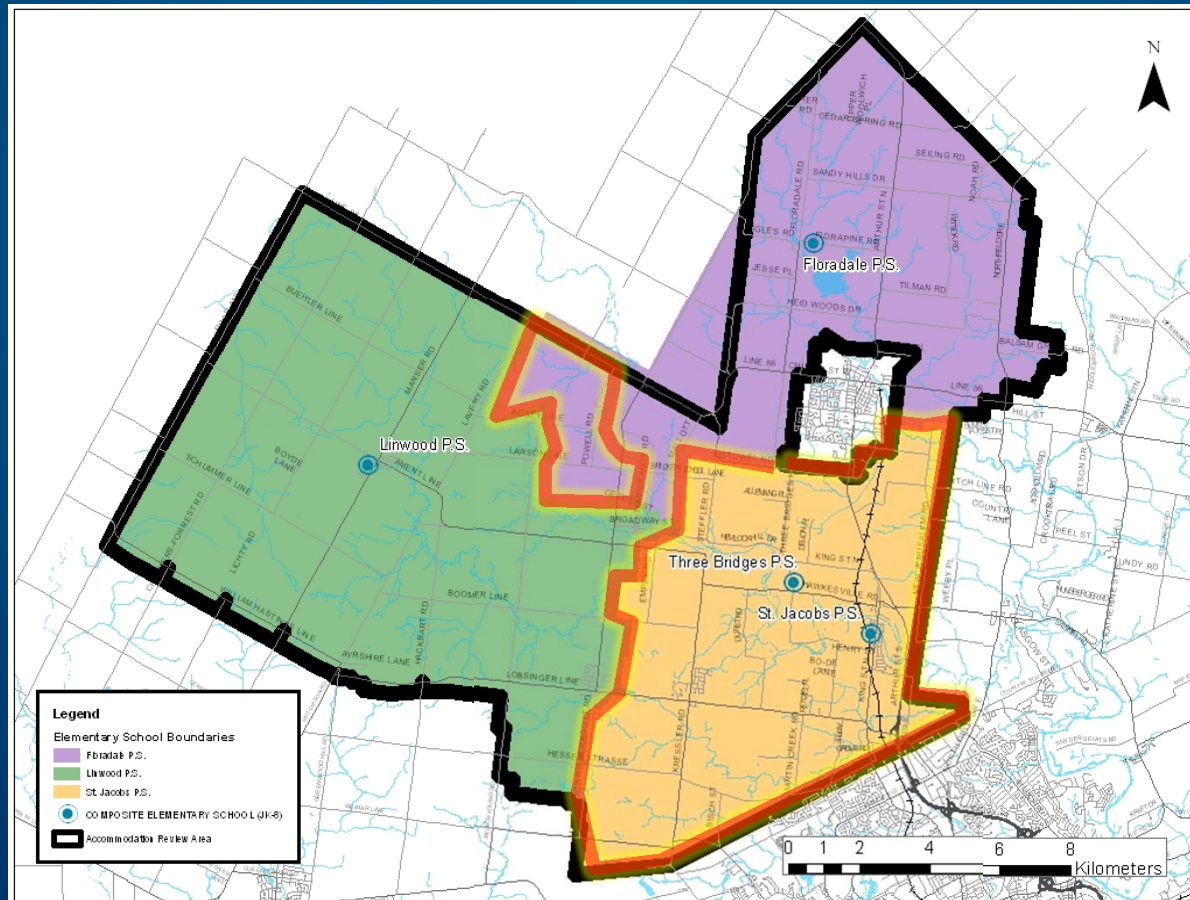
Facility:

- Projected Maintenance costs (10 yr)
 - \$550,000
- Library/Gym spaces considered inadequate
- Bus lay-by recommended



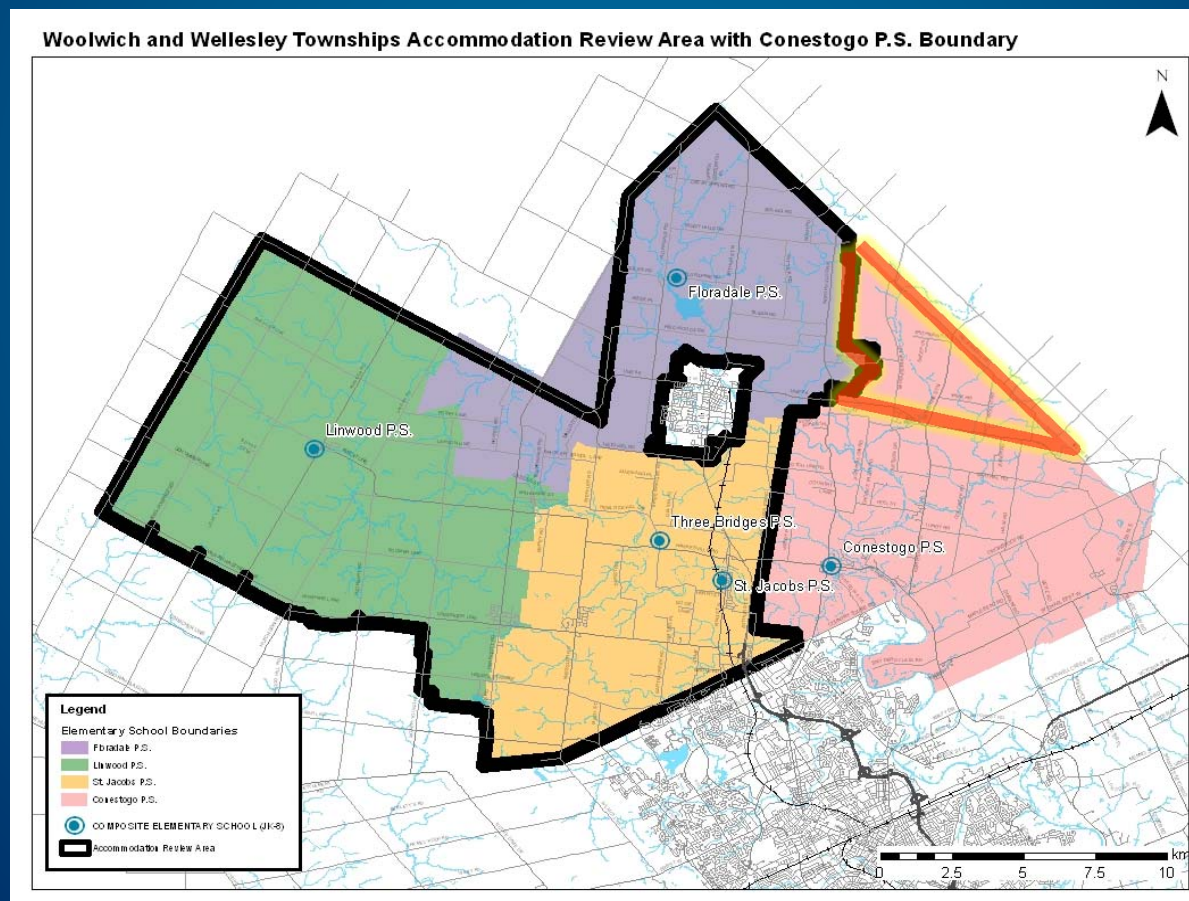
Rational for an Accommodation Review

- Other Issues raised by ARC
 - Transportation distances (bus ride time)



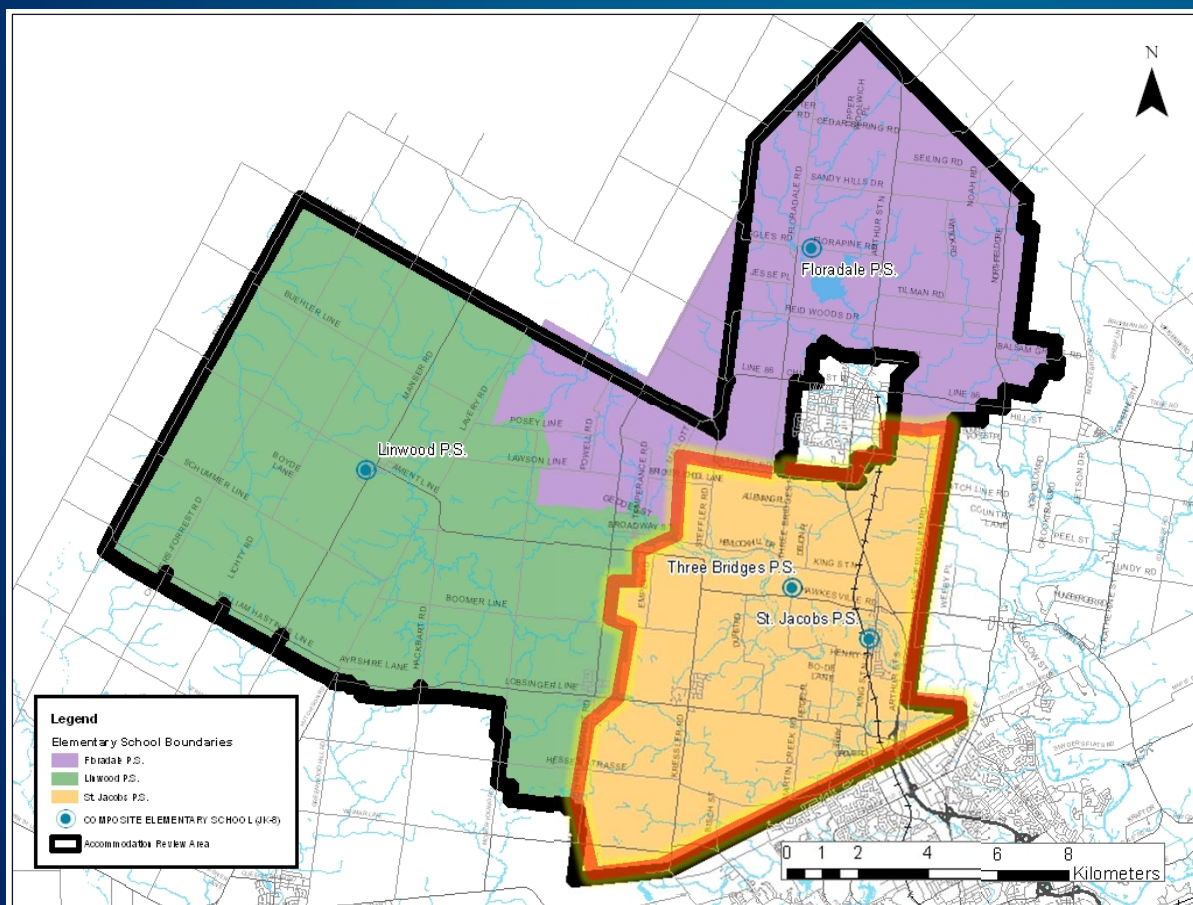
Rational for an Accommodation Review

- Other Issues raised by ARC
 - Transportation distances (bus ride time)



Rational for an Accommodation Review

- Other Issues raised by ARC
 - Unique nature of Three Bridges P.S.



- Shares boundary with St. Jacobs P.S.
- Serves local Mennonite community
- Historical Board agreed to operate school according to a number of 'understandings'
- School community generally not comfortable with children attending others schools
- Changes could result in loss of enrolment to parochial school system

Review Objectives

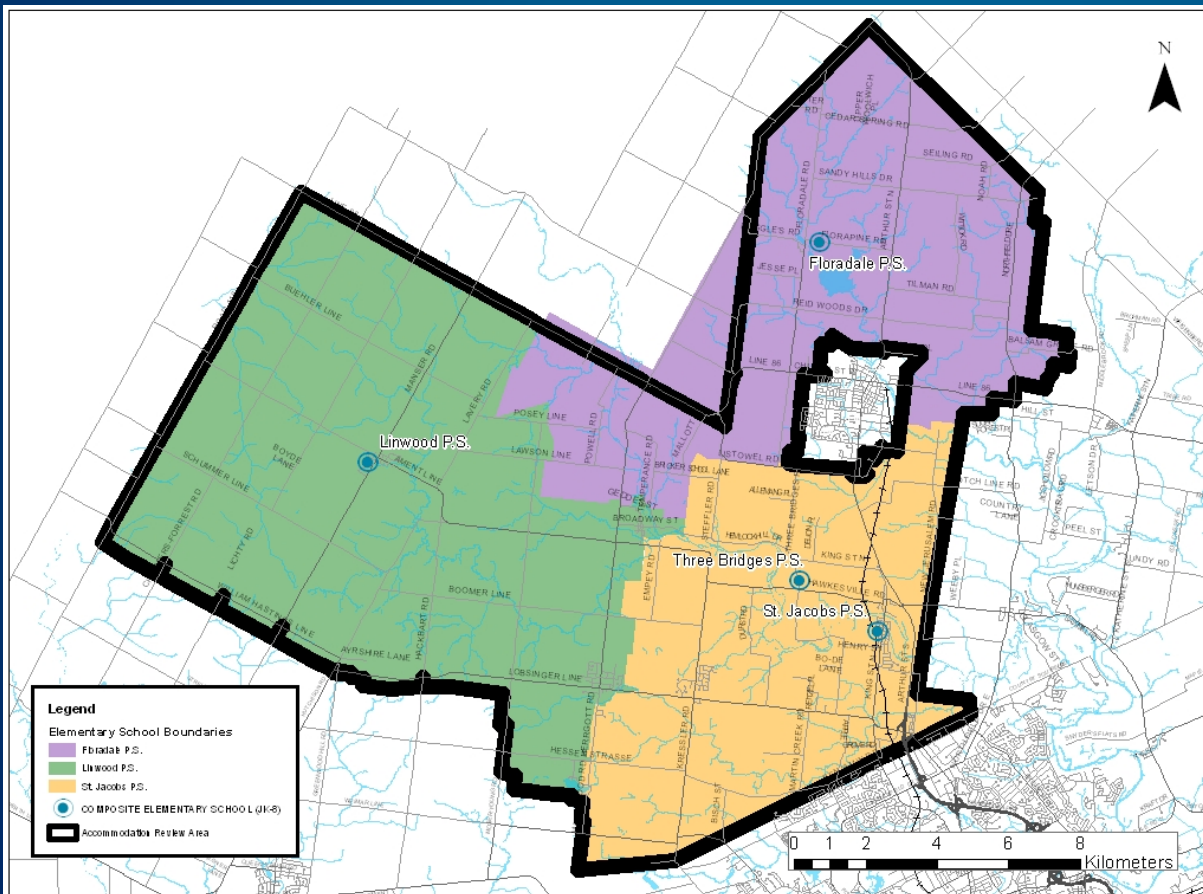
- **Ensure equitable student access to a community school by having defined attendance area boundaries that relate geographically to the community it is located in.**
- **Where possible organize school attendance boundaries to minimize distance to school (time on bus)**
- **Address student transitions where changes proposed.**
- **Have regard for Board policy 3002; Elementary School Size and Configuration, recognizing the challenges of rural areas.**
- **Support the efficient use of capital and operating resources through the consideration of facility condition, accessibility, and equitable access to educational amenities.**
- **Maximize the number of students accommodated in permanent capacity.**
- **Maximize the use of existing capacity within facilities**
- **Recognize the unique needs of communities served by different schools through the reasonable accommodation of cultural differences.**

Recommendations

- ARC evaluated 15 different accommodation options
- Three Bridges P.S. closed or significantly changed in majority of evaluated options
- Could not reconcile the continued operation of Three Bridges P.S. within the context of Review Objectives
- ARC presents two options for recommendation; Status Quo, Scenario 10a

Recommendations

Status Quo Scenario



- No school closures
- No boundary or program changes
- School improvements at St. Jacobs P.S. and Three Bridges P.S.

Recommendations – Status Quo

Recommendation #1: Rebuild St. Jacobs P.S.

Given the expected estimated costs at St. Jacobs P.S. over the next 10 years the WRDSB consider a rebuild of the facility (estimated at \$7.2 M), including a double gymnasium, on its existing site.

Anticipated Facility Maintenance and Capital Costs St. Jacobs P.S.

School	10yr Renewal needs	FDK	Accessibility	Bus Lay-by	Library	Gym	Total
St. Jacobs P.S.	\$2.1 M	\$1 M	\$0.5 M	\$0	\$0.3 M	\$1.5 M	\$5.4 M

Capital Funding Benchmarks* – New Construction

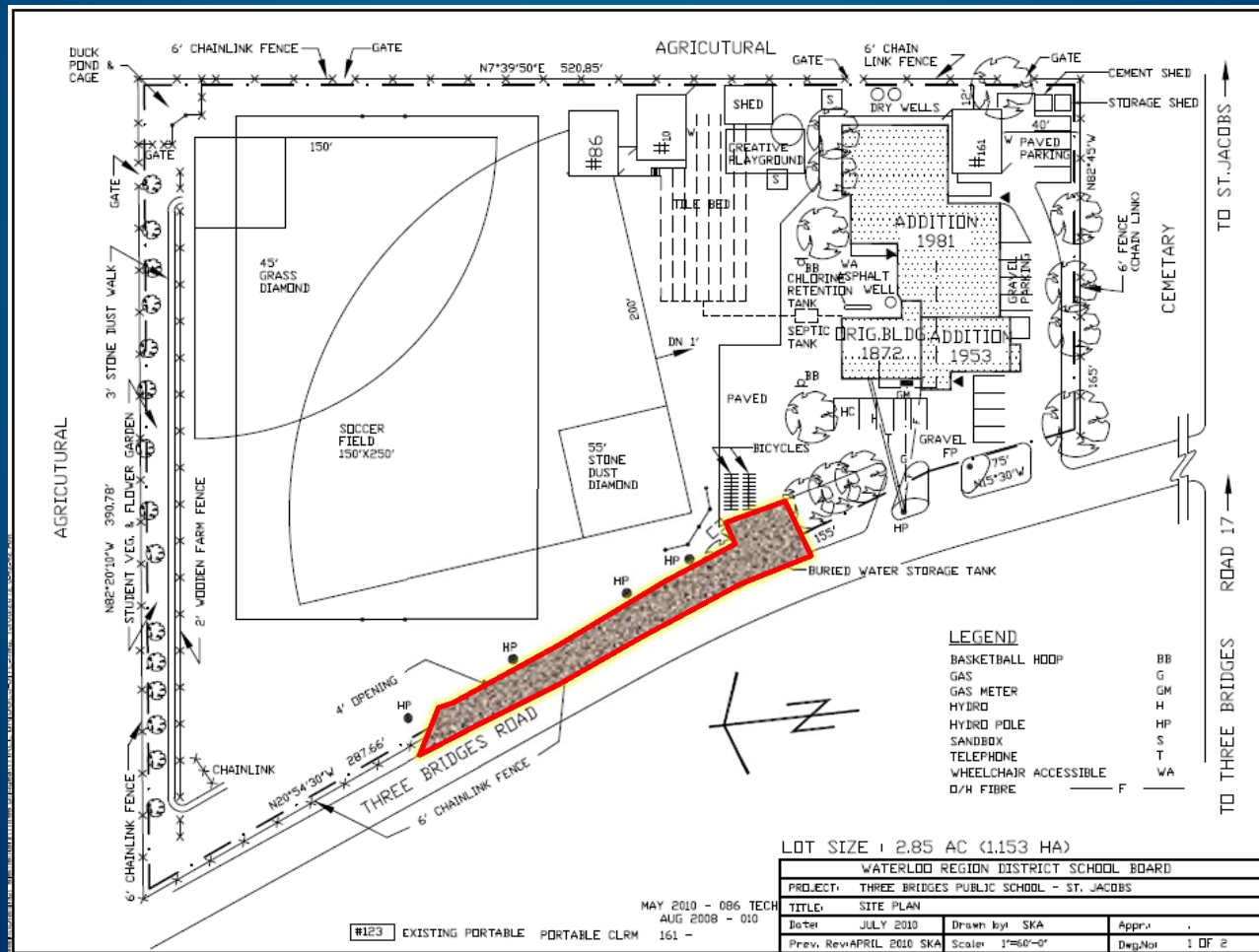
School	OTG Capacity	m ² / Student	\$/m ² Funded	\$ Funded if Built New
St. Jacobs P.S.	351	10.99	1847.53	\$7.13 M

*From Ministry of Education Memorandum 2011:B6 “Revised Capital Funding Benchmarks”.

Recommendations – Status Quo

Recommendation # 2: Construct Three Bridges P.S. Bus Lay-By.

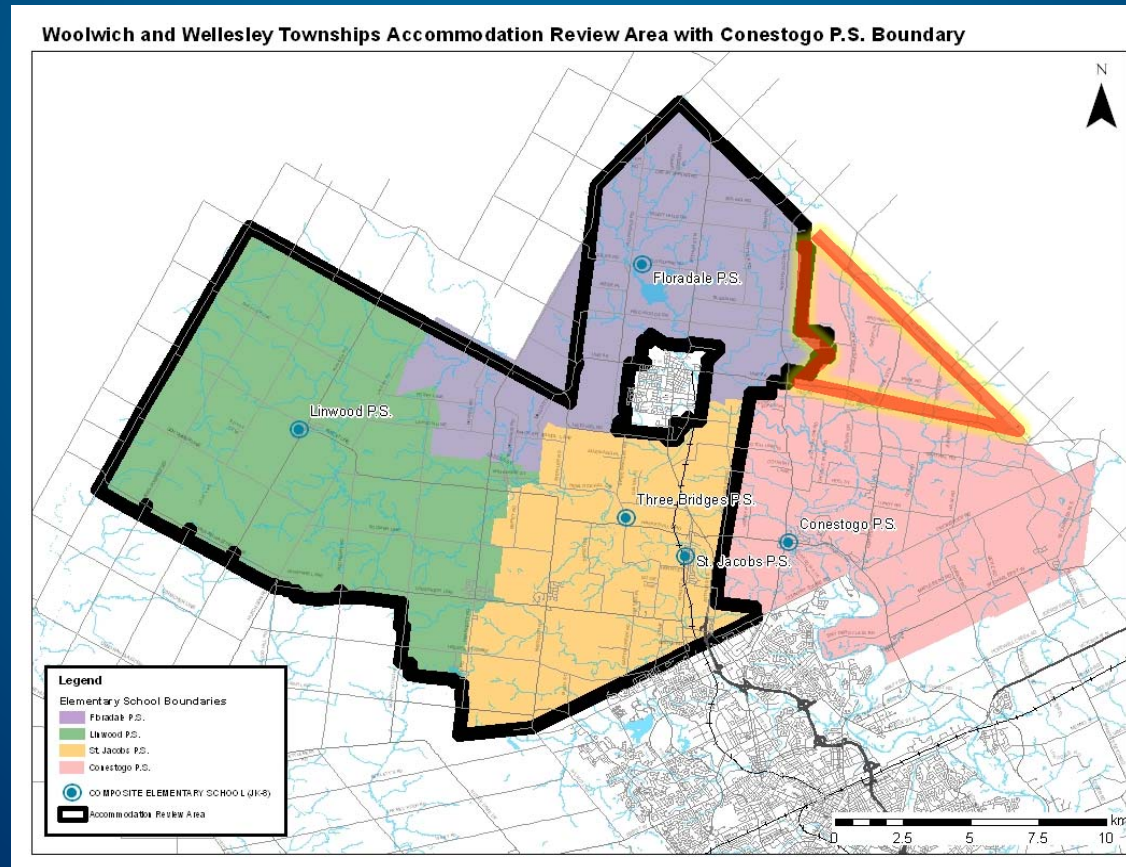
The WRDSB complete the proposed bus lay-by at Three Bridges P.S. to improve student and community safety.



Recommendations – Status Quo

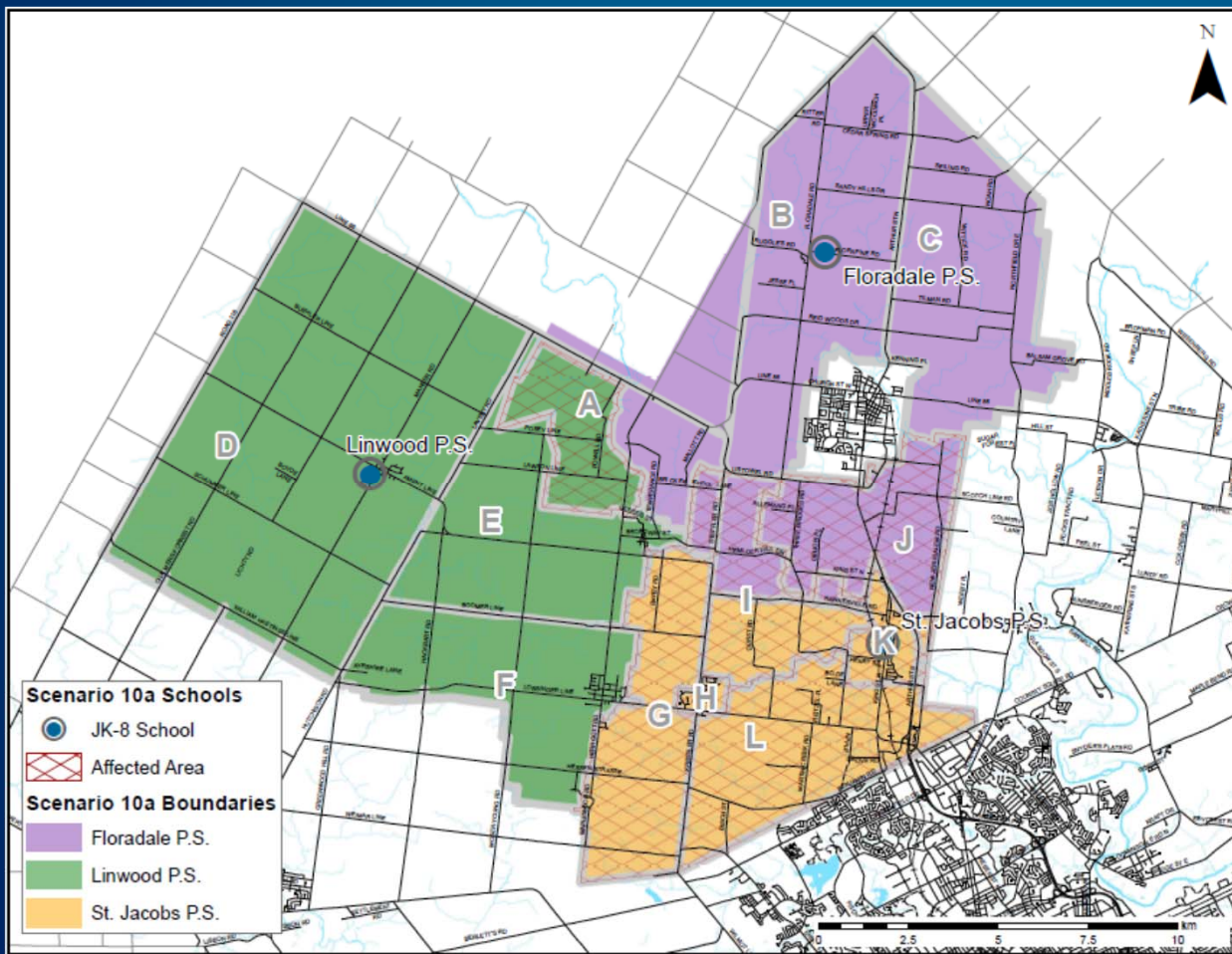
Recommendation # 3: Consider Boundary Study between Floradale P.S. and Conestogo P.S.

Given the fact that some areas of the Conestogo P.S. attendance boundary are closer to Floradale P.S. and the existing and projected surplus space at Floradale P.S., the WRDSB consider a boundary study between Floradale P.S. and Conestogo P.S.



Recommendations

Scenario 10a



- Close Three Bridges P.S.
- Boundary change between Linwood P.S. and Floradale P.S.
- Boundary Change between St. Jacobs P.S./Three Bridges P.S. and Floradale P.S.
- Rebuild St. Jacobs P.S.
- Consider boundary study between Floradale P.S. and Conestogo P.S.

Recommendations – Scenario 10a

Recommendation #1: Close Three Bridges P.S.

Three Bridges P.S. be closed effective July 1, 2014; and that

Students enrolled at Three Bridges P.S. during the 2013/2014 school year and their siblings be given the opportunity to attend either St. Jacobs P.S. or Floradale P.S. starting the 2014/2015 school year until completion of grade 8; and that

Students enrolled in Kindergarten at St. Jacobs P.S. during the 2013/2014 school year who would otherwise attend Three Bridges P.S. upon graduation to grade 1 be given the opportunity to attend either St. Jacobs P.S. or Floradale P.S. starting the 2014/2015 school year until completion of grade 8; and that

Transportation be extended to those Three Bridges P.S. and St. Jacobs P.S. students and siblings based on transportation eligibility.

Recommendations – Scenario 10a

Recommendation #2: Modify the boundary between Floradale P.S. and St. Jacobs P.S.

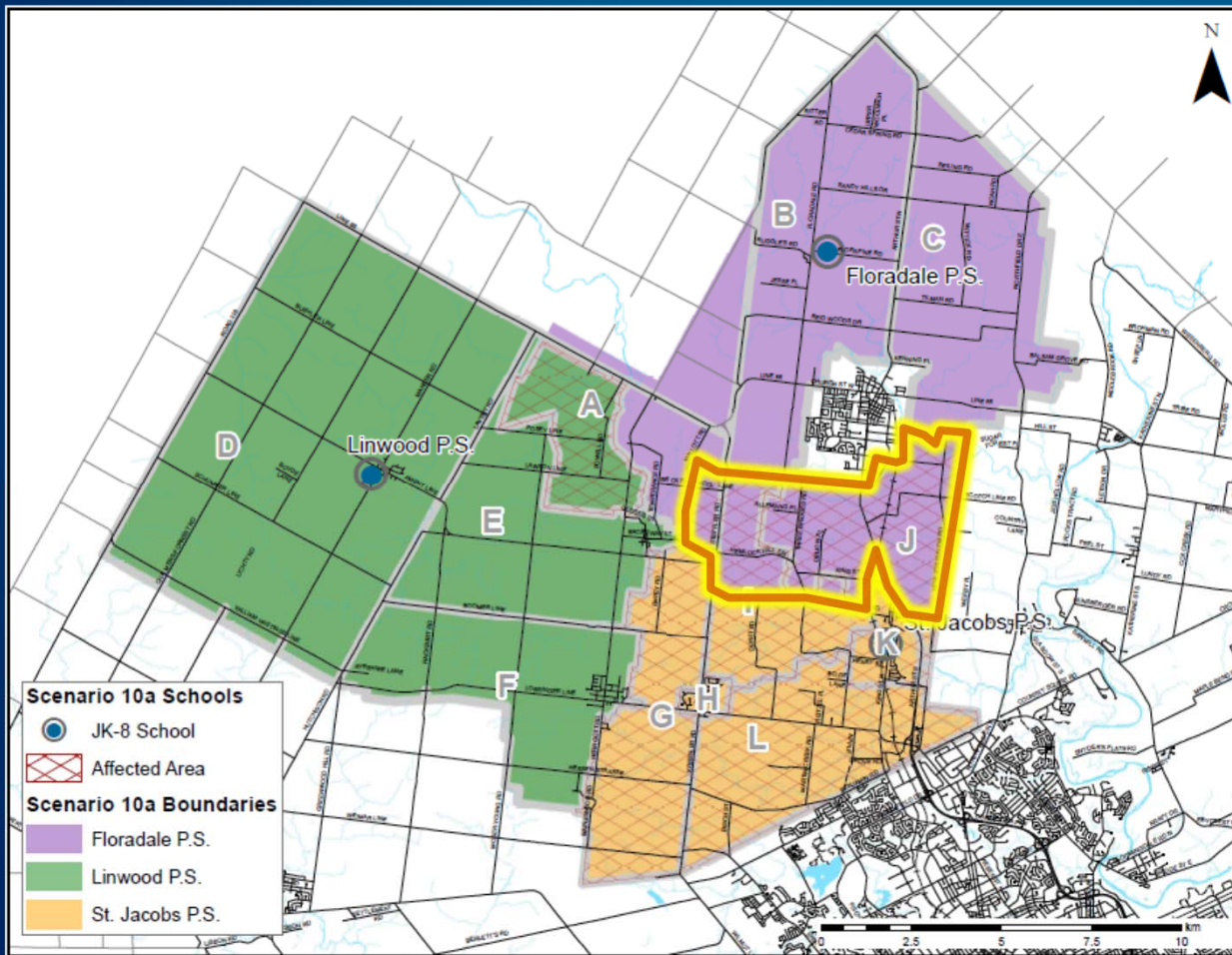
The Floradale P.S. and St. Jacobs P.S. boundary be modified as illustrated in figure 3; and that

Affected Grade 7 students, and their siblings, attending St. Jacobs P.S. during the 2013/2014 school year be given the opportunity to attend St. Jacobs P.S. or Floradale P.S. for the 2014/2015 school year; The Floradale P.S. and St. Jacobs P.S. boundary be modified as illustrated in figure 3; and that

Transportation be extended to those Grade 7 students and their siblings, for the duration of the 2014/2015 school year based on transportation eligibility.

Recommendations – Scenario 10a

Recommendation #2: Modify the boundary between Floradale P.S. and St. Jacobs P.S.



- Floradale P.S. boundary moves south closer to St. Jacobs P.S.
- Area to be moved has historically yielded few St. Jacobs P.S. students
- Three Bridges community has expressed more comfort with Floradale P.S. than others

Recommendations – Scenario 10a

Recommendation #3: Modify the boundary between Floradale P.S. and Linwood P.S.

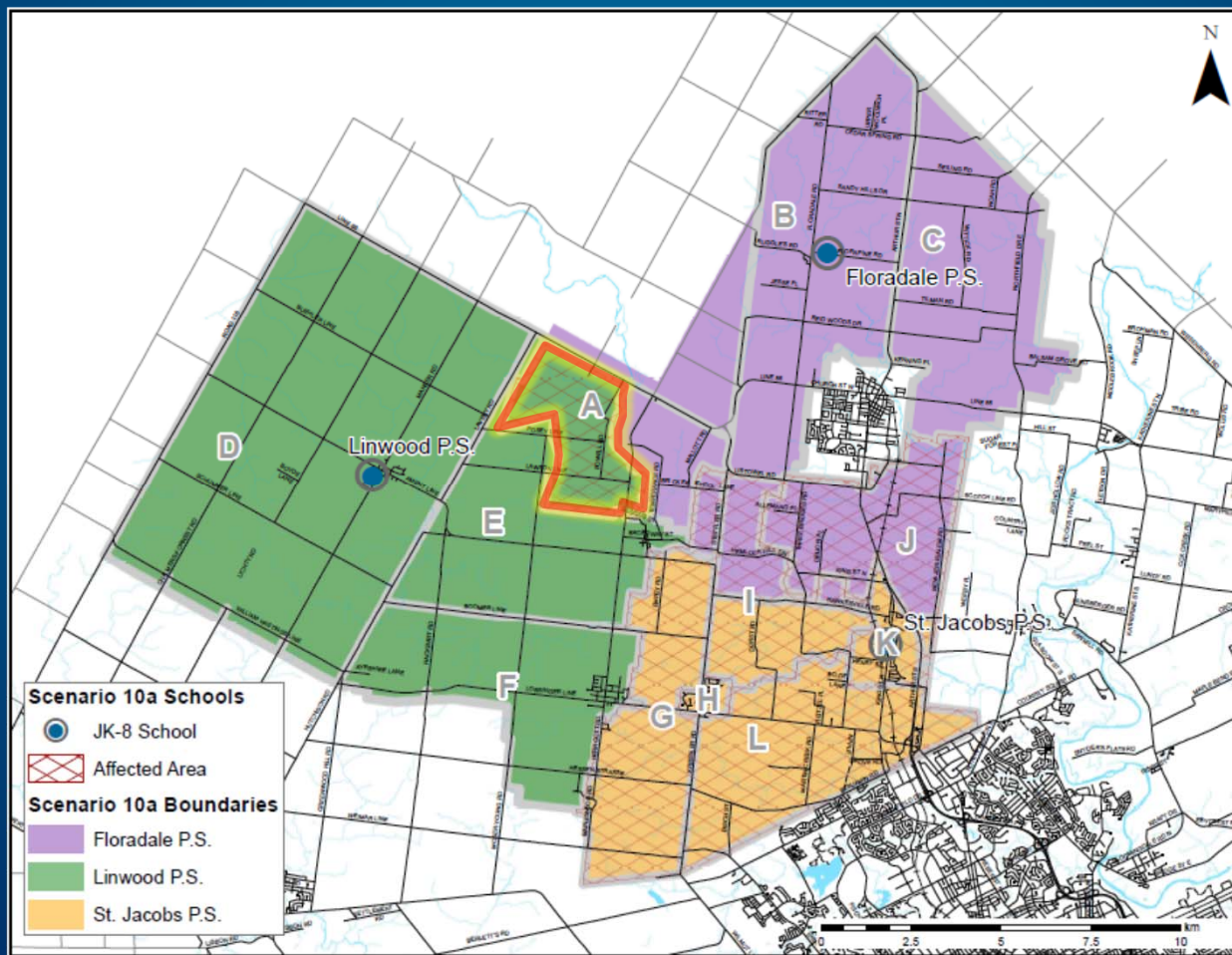
The Floradale P.S. and Linwood P.S. boundary be modified as illustrated in figure 4; and that

Grade 7 students, and their siblings, attending Floradale P.S. during the 2013/2014 school year be given the opportunity to attend Floradale P.S. or Linwood P.S. for the 2014/2015 school year; and that

Transportation be extended to those Grade 7 students and their siblings, for the duration of the 2014/2015 school year based on transportation eligibility.

Recommendations – Scenario 10a

Recommendation #3: Modify the boundary between Floradale P.S. and Linwood P.S.



Recommendations – Scenario 10a

Recommendation #4: Rebuild St. Jacobs P.S.

Given the expected estimated costs at St. Jacobs P.S. over the next 10 years the WRDSB consider a rebuild of the facility, including a double gymnasium, on its existing site.

Recommendation # 5: Consider Boundary Study between Floradale P.S. and Conestogo P.S.

Given the fact that some areas of the Conestogo P.S. attendance boundary are closer to Floradale P.S. and the existing and projected surplus space at Floradale P.S., the WRDSB consider a boundary study between Floradale P.S. and Conestogo P.S.

Next Steps

- 60-Day period (not including March Break)
March 8 – May 17, 2012
- Administration will review ARC's report and prepare the Administration analysis and recommendations which will be presented to the Board
- Committee of the Whole meeting **Monday June 3, 2013** possible date for consideration of recommendations