

Scenario 10A

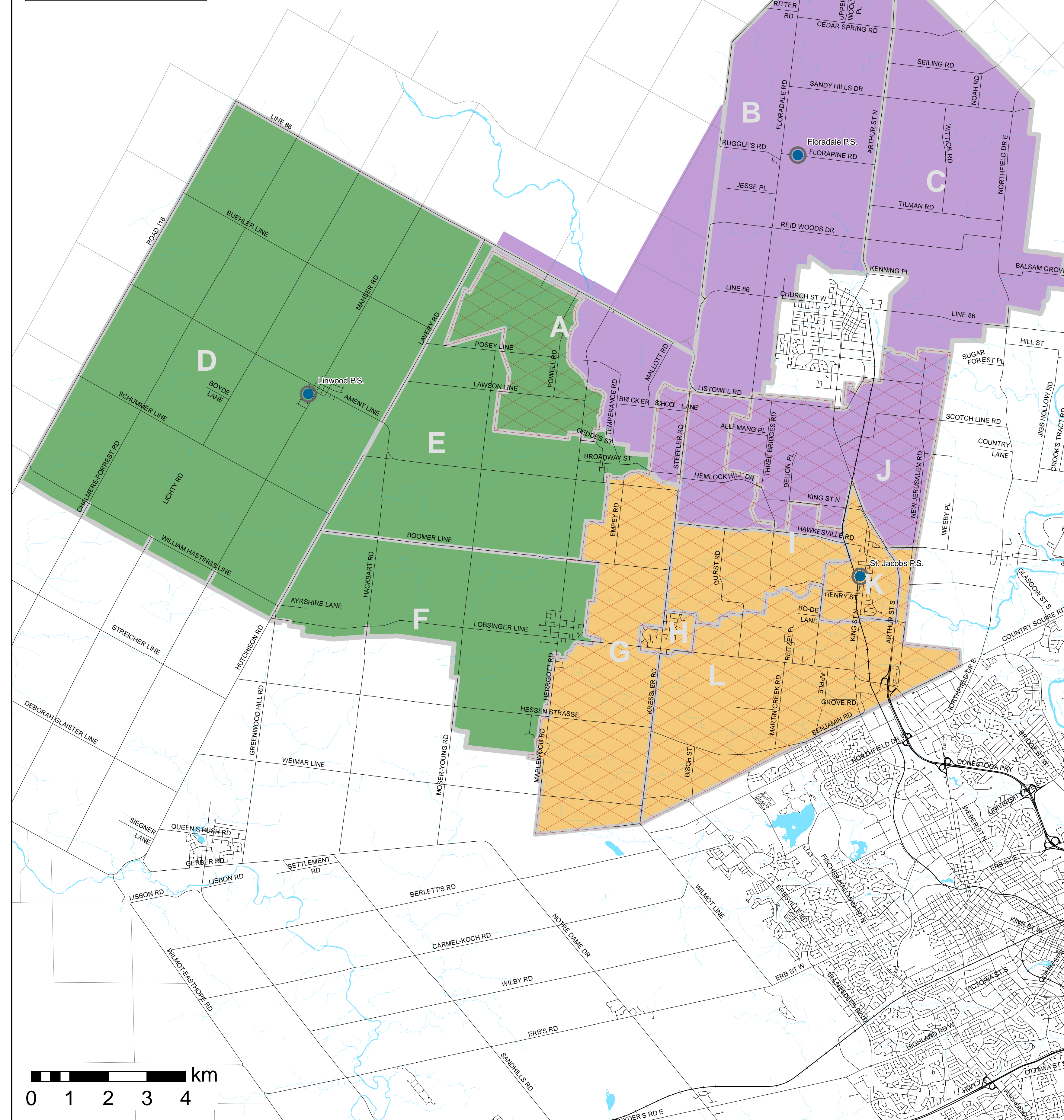
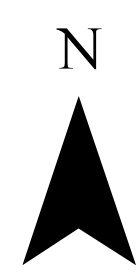
Legend

Scenario 10a Schools

- JK-8 School
- Affected Area

Scenario 10a Boundaries

- Floradale P.S.
- Linwood P.S.
- St. Jacobs P.S.



DESCRIPTION

- Three Bridges PS closed. Students directed to St. Jacobs PS and Floradale PS.
- St. Jacobs PS gets Areas G, H, K, L, and portions of I, J.
- Floradale PS gets portions of Areas I, J from St. Jacobs PS.
- Linwood PS gets Area A west of Conestoga River from Floradale PS

ENROLMENT PROJECTIONS

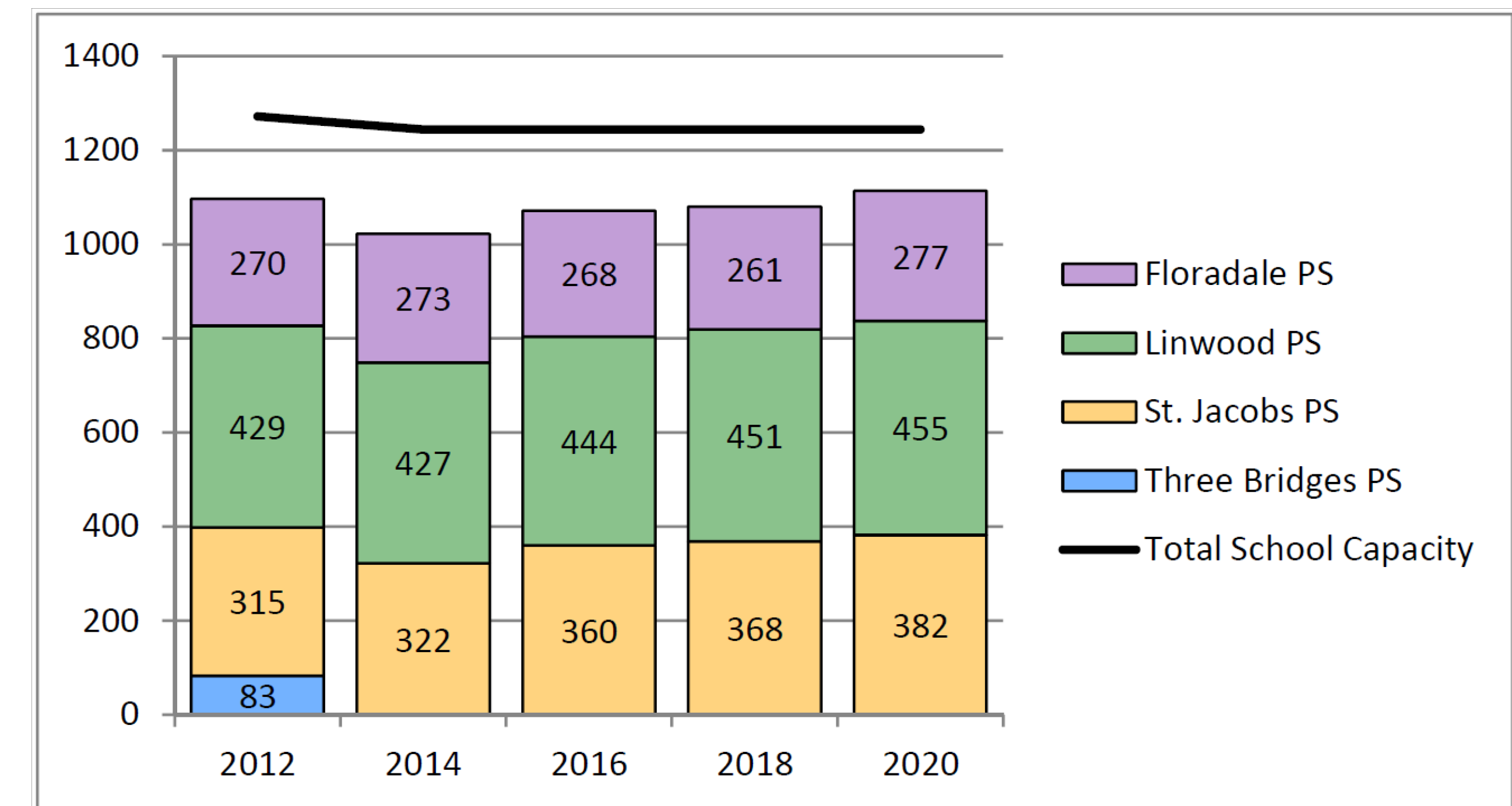
School	2012			2014			2016			2018			2020		
	JK-6	7-8	Total	JK-6	7-8	Total	JK-6	7-8	Total	JK-6	7-8	Total	JK-6	7-8	Total
Floradale PS	214	56	270	212	61	273	197	71	268	215	46	261	212	65	277
Linwood PS	333	96	429	343	84	427	354	90	444	361	90	451	373	82	455
St. Jacobs PS	253	62	315	263	59	322	281	79	360	292	76	368	305	77	382
Three Bridges PS	60	23	83	0	0	0	0	0	0	0	0	0	0	0	0
TOTAL	860	237	1097	818	204	1022	832	240	1072	868	212	1080	890	224	1114

FACILITY INFORMATION

School	Capacity		Site Size (acres)	Accessibility
	Without FDK	With FDK		
Floradale PS	322	322	9.4	100%
Linwood PS	510	519	11.17	96%
St. Jacobs PS	348	403	4.65	66%
Three Bridges PS	92	92	2.84	81%
TOTAL	1272	1336		

* FDK refers to Full-Day Kindergarten. Revised capacities include additions to implement the FDK program. (Linwood in 2012 and St. Jacobs in 2014)

PROJECTED ENROLMENT



Notes:
 OTG Capacity = On the Ground Capacity – Ministry of Education assigned loading of students in permanent space in a facility
 A factor has been applied to each school's enrolment to account for out of boundary student gains and losses due to magnet programs such as French Immersion (FI) and Special Education Area Classes (SpecEd)
 Enrolment projections are approximations calculated based on the most current information available