



Waterloo Region
District School Board

Preston Area Elementary Schools

Boundary Study

Public Meeting #2

Apr. 29, 2009

Preston High School



- 1. Welcome/Introductions**
- 2. Background**
- 3. Process**
- 4. Scenarios**
- 5. Break Out Sessions**
- 6. Wrap up**



“The Waterloo Region District School Board considers a School Boundary Study when considering a change to one or more school catchment areas.”

There can be a number of reasons for a study:

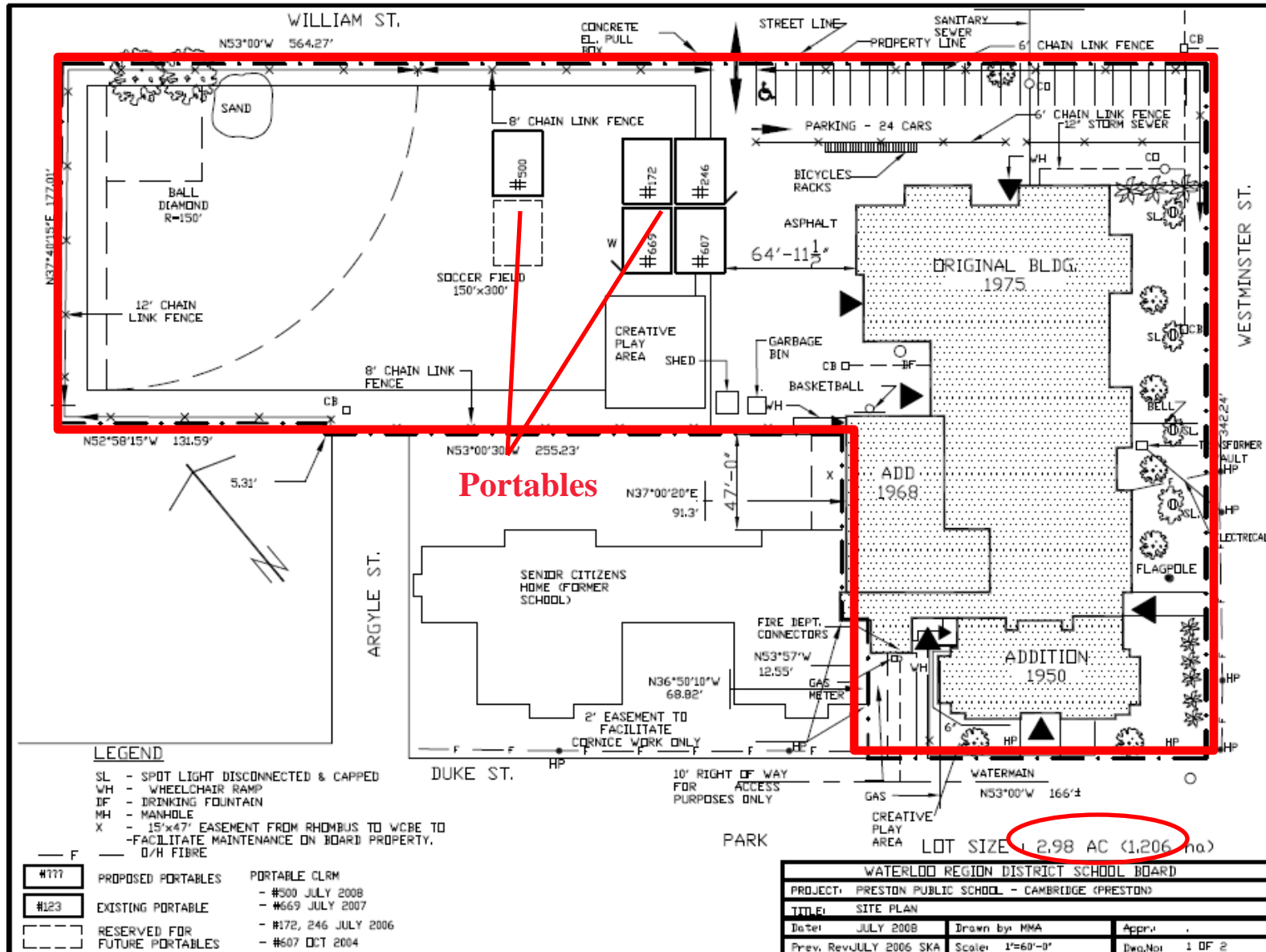
- opening of a new school and establishing the new boundary and adjusting the boundaries of the existing schools in the area;
- changing the grade structure of an elementary school – this would include changing an elementary school from a junior kindergarten (JK) to grade 6 format to a composite school with JK to grade 8 format.
- balancing enrolment and facilities - one school may have too many students for its capacity and another may have too few;
- after municipalities approve new residential development, the area needs to be assigned to a school where capacity exists.



Preston Area Elementary Schools Current Enrolment

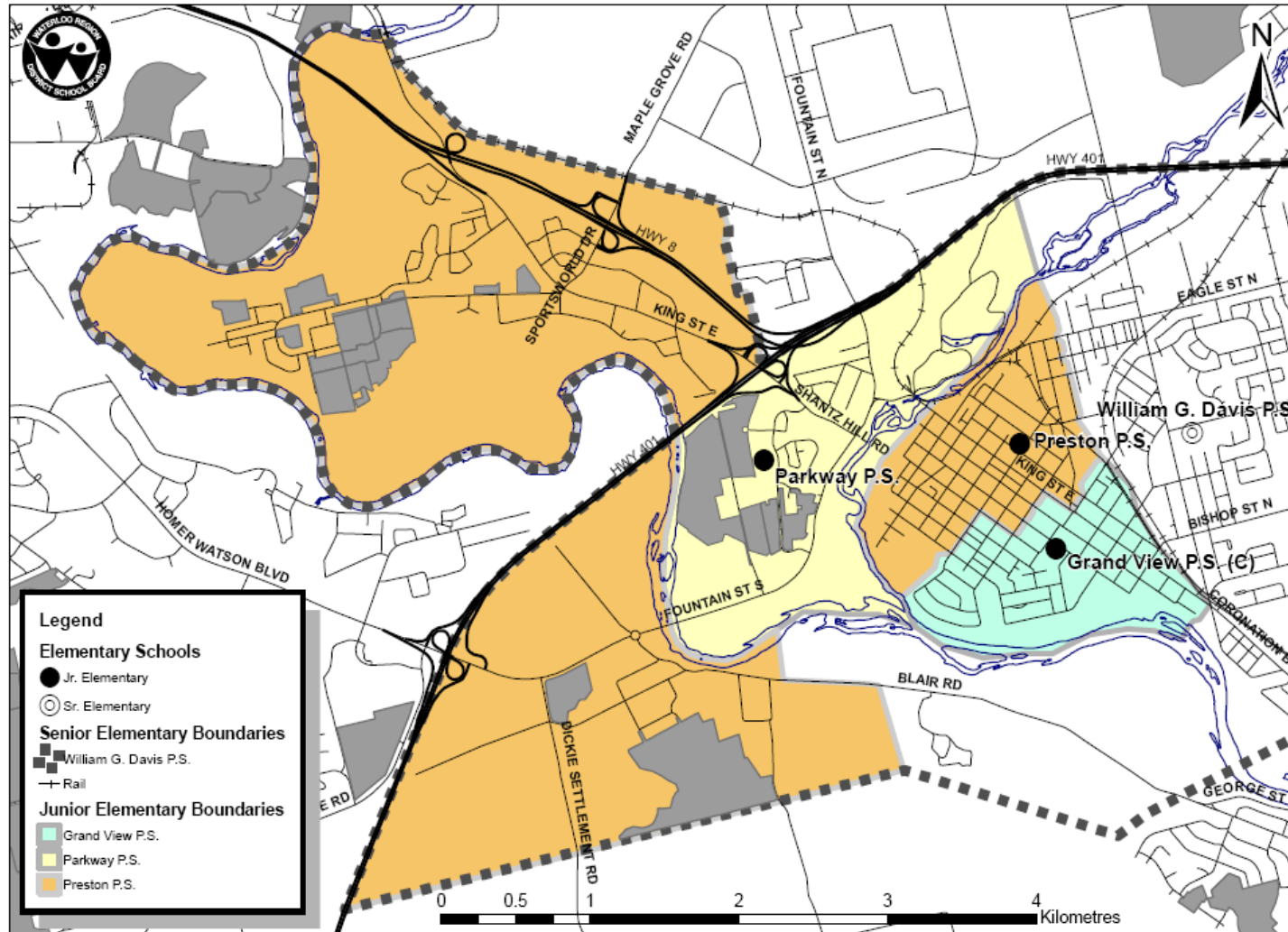
School	Grades	Total Students	Total FTE	Capacity	Portables
Coronation P.S.	JK-6	437	383	357	2
Grand View P.S. (C)	JK-6	167	155	216	0
Parkway P.S.	JK-6	204	180.5	236	1
Preston P.S.	JK-6	396	343	259	5
Ryerson P.S.*	JK-6	99	88	135	2
William G. Davis P.S.	7-8	371	371	446	0
Totals		1674	1520.5	1649	10

FTE: Full Time Equivalent. Counts Kindergarten students as halves, as they only occupy the space half the time



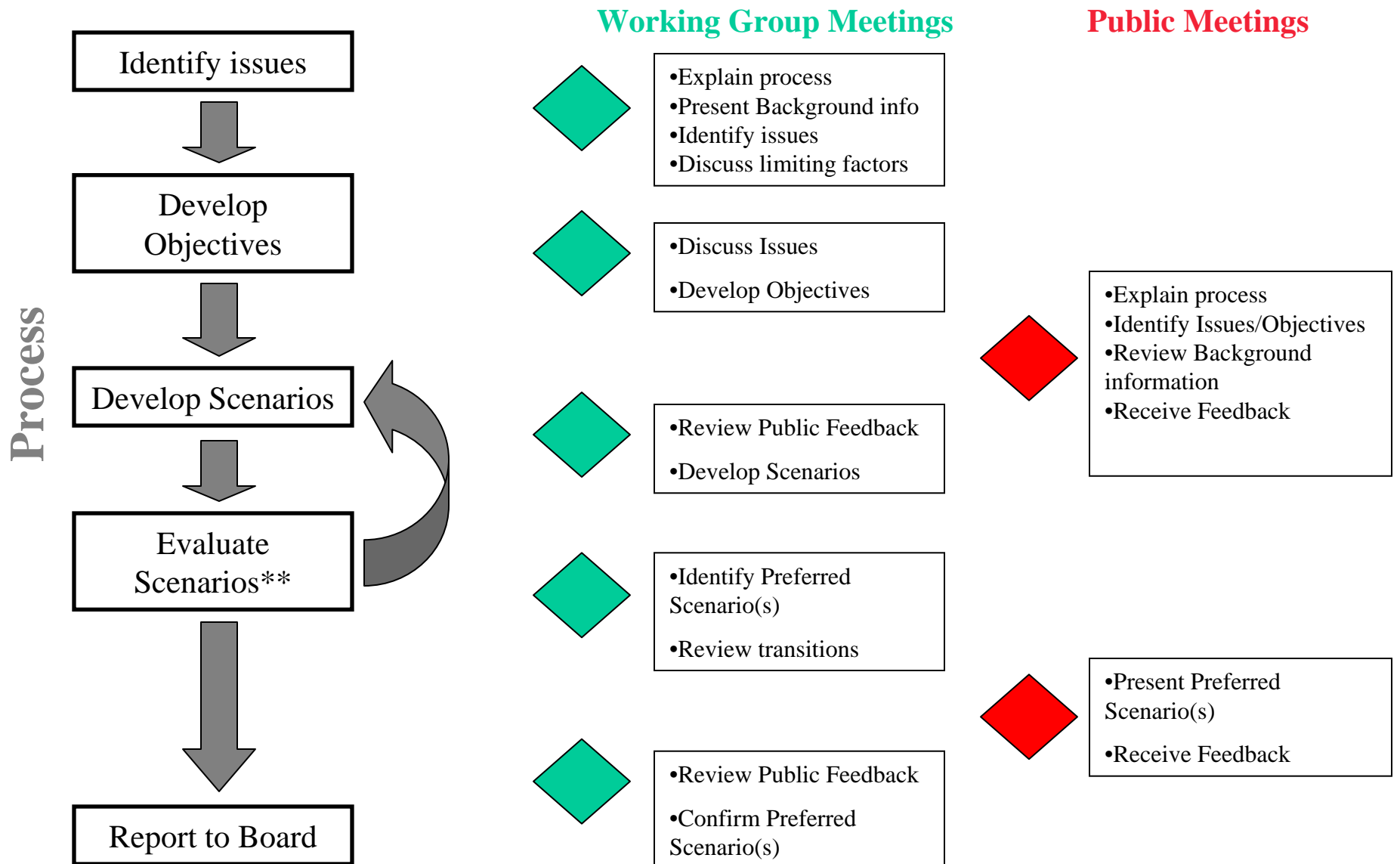


Preston Boundary Study: Current and Future Development





Boundary Study Process



**Scenario development and evaluation may go through multiple iterations as scenarios are evaluated, and new ideas result from the evaluation.



Preston Boundary Study Objectives

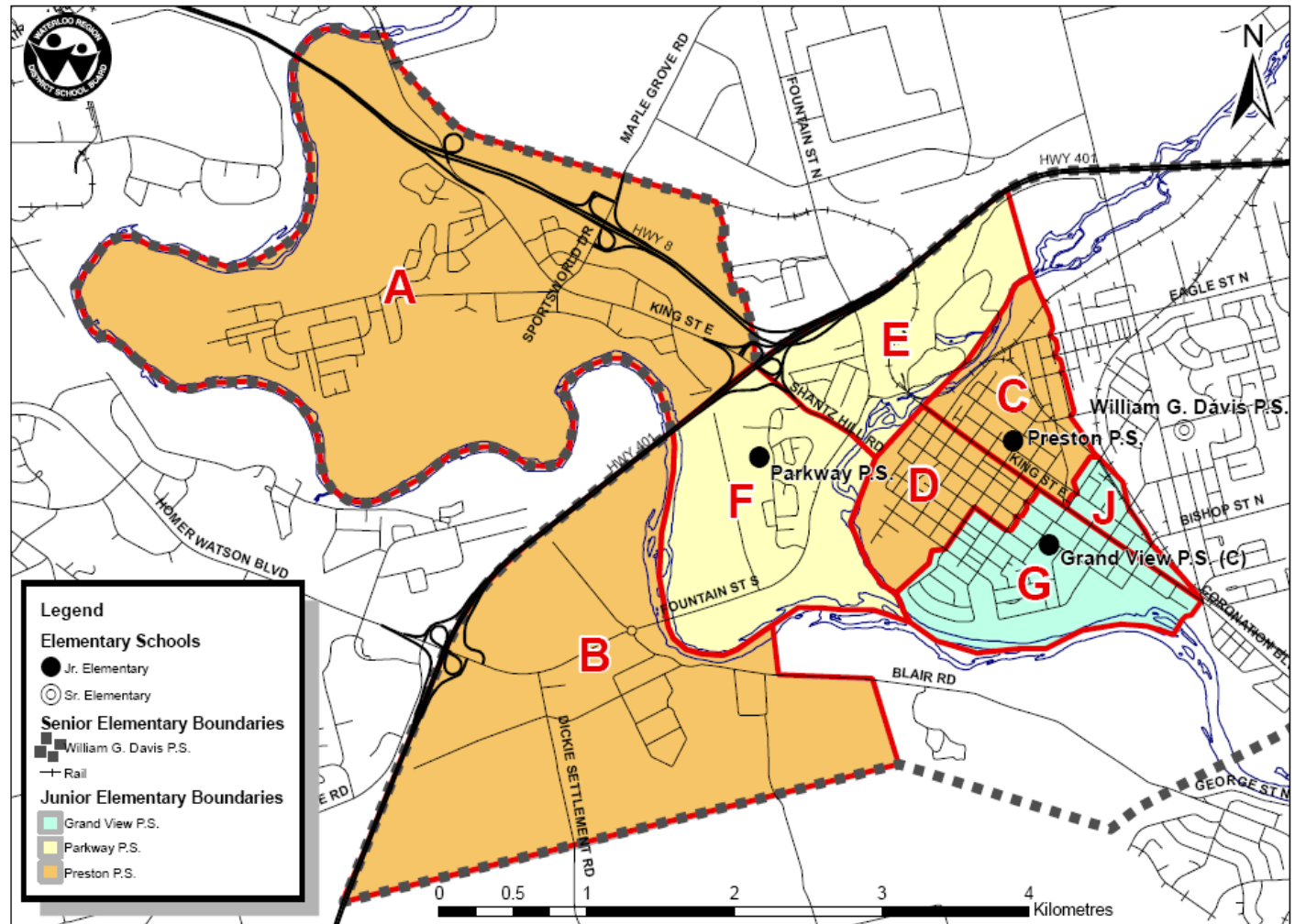
- Address over and declining enrolment issues, aligning facilities and enrolment in the longer term
- Have regard for some organizational and class objectives of the Good Schools Committee Report.
- Be financially feasible
- Address any resulting student transitions, and avoid fragmentation of communities
- Determine any facility issues or upgrades that would facilitate boundary changes, enhance program delivery, and address accessibility concerns.



Status Quo

•All boundaries remain as current

Area	2010 JK-6
A	133
B	22
C	156
D	90
E	18
F	193
G	114
J	39





Status Quo

School	Built Capacity	2010		2014		2018	
		FTE	% Capacity	Total Students	% Capacity	Total Students	% Capacity
Preston P.S.	259	349.5	135%	420	162%	369	142%
Parkway P.S.	236	186.5	79%	240	102%	255	108%
Grand View P.S.	216	136	63%	129	60%	136	63%
Total	711	672	95%	789	111%	760	107%

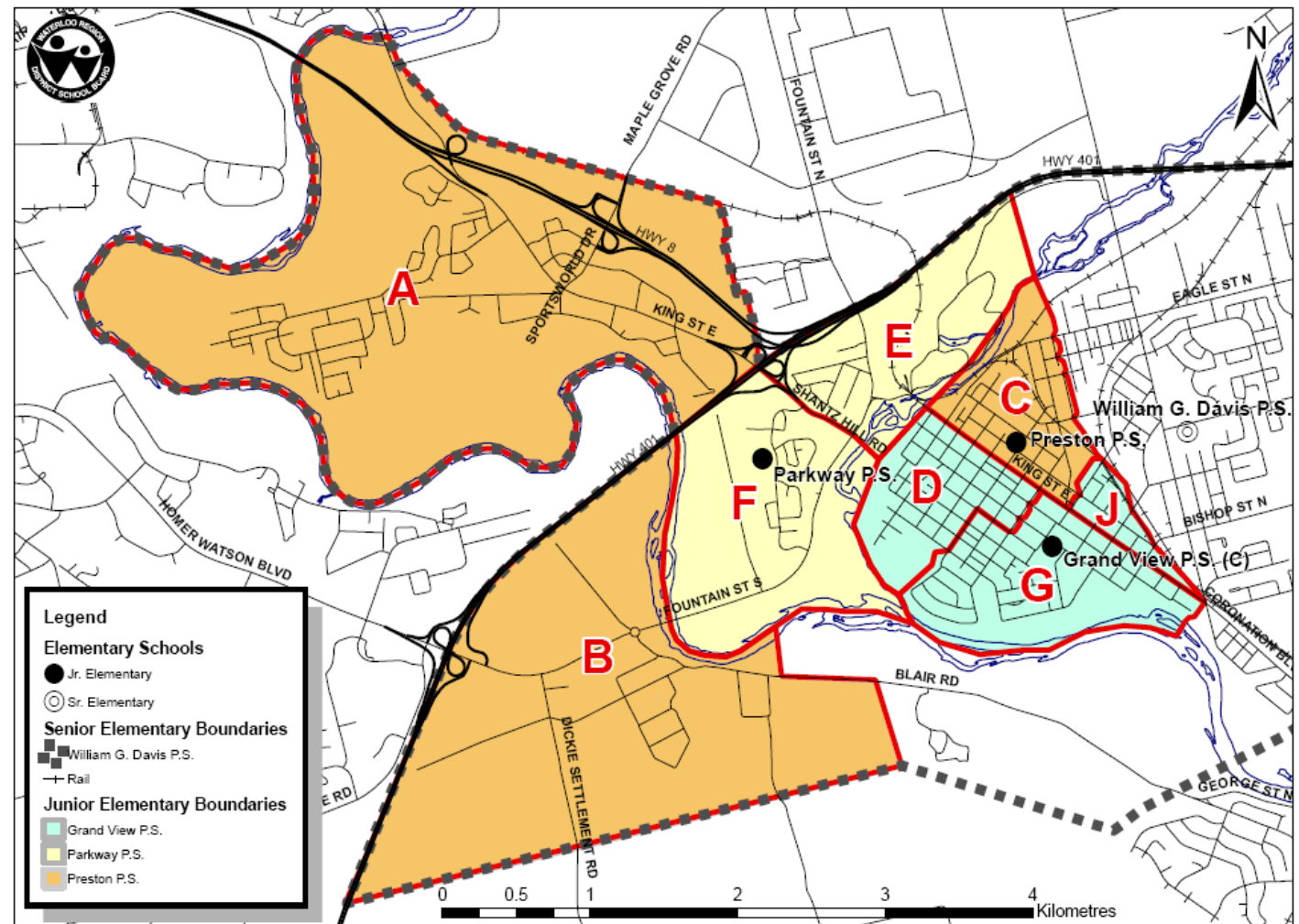
- Development pressure continues to increase Preston P.S. enrolment
- Parkway P.S. decreases in short term, enrolment increases as development within boundary occurs
- Grand View P.S. is relatively stable however below capacity



Scenario 1 (Scenario D from Mar. 4 Public Meeting)

•Grand View gets Area D from Preston

Area	2010 JK-6
A	133
B	22
C	156
D	90
E	18
F	193
G	114
J	39





Scenario 1: Grand View gets Area D from Preston

(Scenario D from Mar. 4 Public Meeting)

School	Built Capacity	2010		2014		2018	
		FTE	% Capacity	Total Students	% Capacity	Total Students	% Capacity
Preston P.S.	259	272.5	105%	332	128%	281	108%
Parkway P.S.	236	186.5	79%	240	102%	255	108%
Grand View P.S.	216	213	99%	217	100%	224	104%
Total	711	672	95%	789	111%	760	107%

- Preston P.S. reduced enrolment, still overcapacity but decreasing
- Parkway P.S. decreases in short term, enrolment increases as development within boundary occurs
- Grand View P.S. increases enrolment, decreases slightly over time, stabilizes at capacity.



Scenario 1 (Scenario D from Mar. 4 Public Meeting)

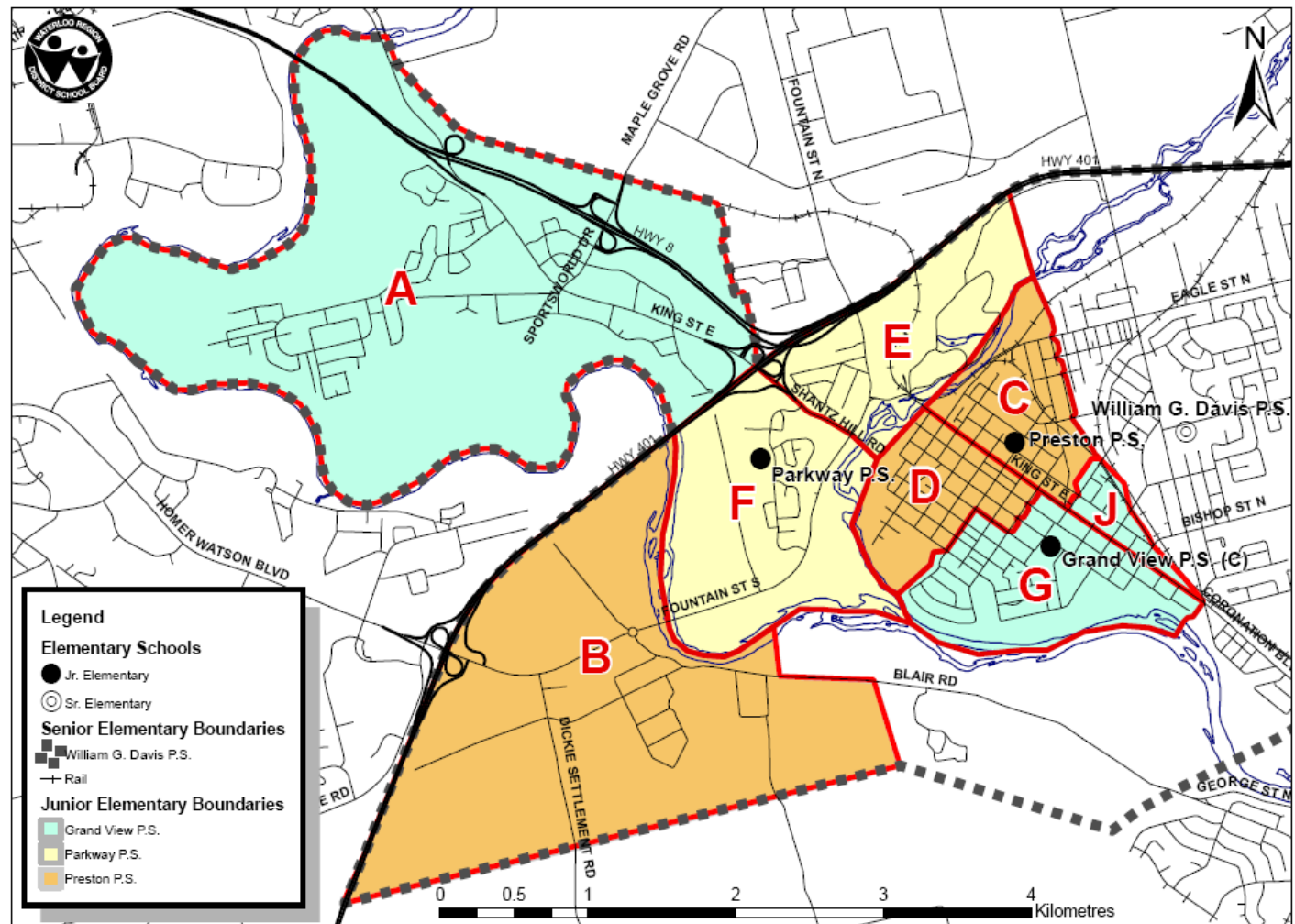
Objective	Meets	Doesn't meet
<p>Align facility/enrolment over longer term</p>	<p>Preston enrolment/portables reduced. Grand View enrolment increased. Parkway enrolment increases in long term</p>	
<p>Regard for Good Schools Standing Committee Report</p>	<p>More equitable programming between facilities.</p>	
<p>Financially feasible</p>	<p>Yes</p>	
<p>Address student transitions, avoid community fragmentation</p>	<ul style="list-style-type: none"> •1 area (D) experiences transition to a new school (90 students 2010 JK-6). • Avoids some crossing of King St. •Addresses fragmentation b/w D/G. 	<ul style="list-style-type: none"> •Fragmentation b/w C/D. •Potentially more students crossings at streets with no stoplights.
<p>Facility upgrades, accessibility concerns</p>	<p>Recommendation Grand View given consideration for priority on accessibility project list. Grand View likely to require upgrades to Learning Resource Centre</p>	



Scenario 3a (Scenario C from Mar. 4 Public Meeting)

•Grand View gets
Area A from
Preston

Area	2010 JK-6
A	133
B	22
C	156
D	90
E	18
F	193
G	114
J	39





Scenario 3a: Grand View gets Area A from Preston

(Scenario C from Mar. 4 Public Meeting)

School	Built Capacity	2010		2014		2018	
		FTE	% Capacity	Total Students	% Capacity	Total Students	% Capacity
Preston P.S.	259	235.5	91%	271	105%	247	95%
Parkway P.S.	236	186.5	79%	240	102%	255	108%
Grand View P.S.	216	250	116%	278	129%	258	119%
Total	711	672	95%	789	111%	760	107%

- Preston P.S. reduced enrolment stays at or about capacity
- Parkway P.S. decreases in short term, enrolment increases as development within boundary occurs
- Grand View P.S. increases enrolment, remains over capacity



Scenario 3a (Scenario C from Mar. 4 Public Meeting)

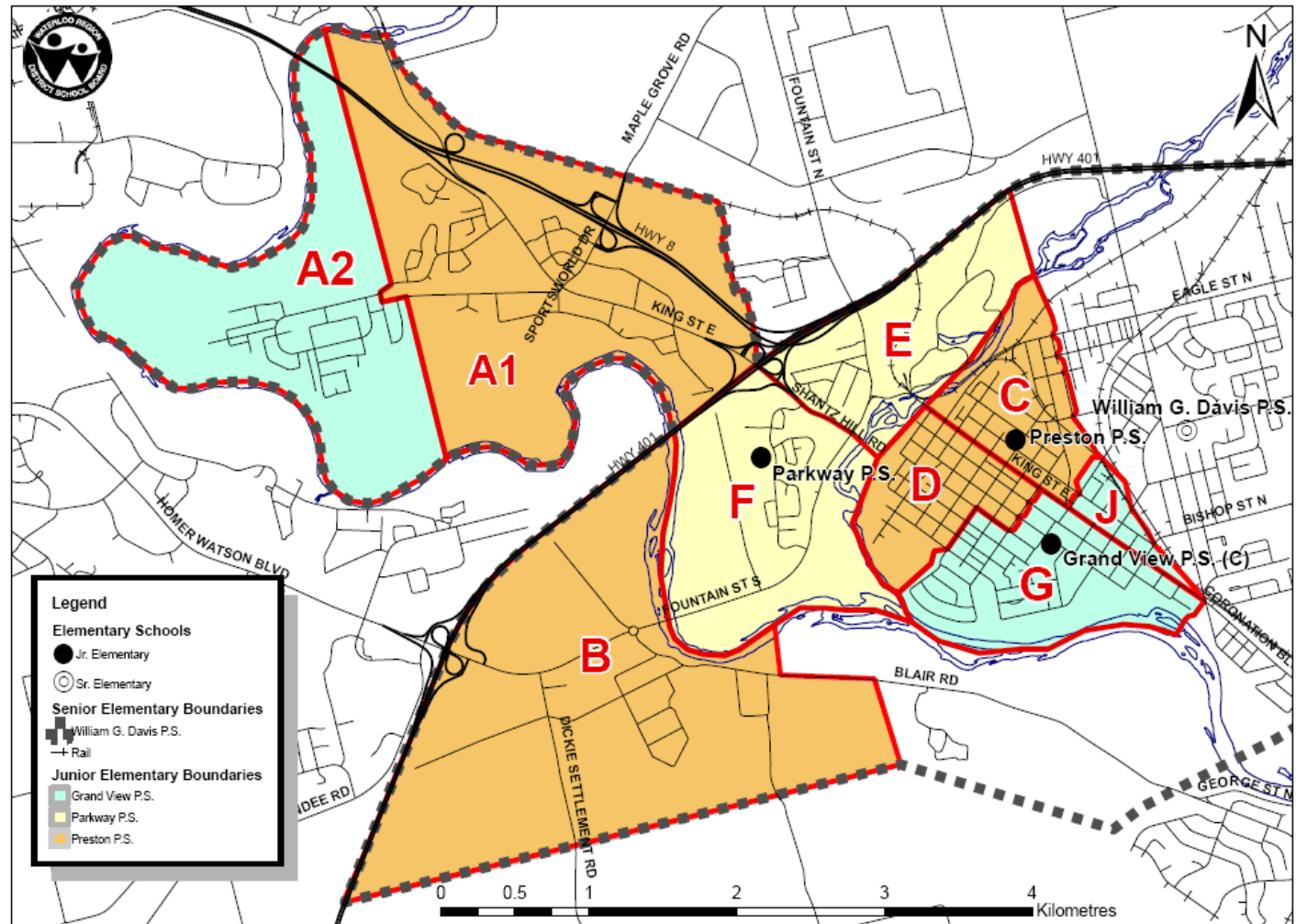
Objective	Meets	Doesn't meet
Align facility/enrolment over longer term	Preston enrolment/portables reduced. Grand View enrolment increased. Parkway enrolment increases in long term	Grand View enrolment significantly increased above capacity.
Regard for Good Schools Standing Committee Report	More equitable programming b/w facilities.	
Financially feasible	Yes	
Address student transitions, avoid community fragmentation	<ul style="list-style-type: none"> •1 area (A) experiences transition to a new school (133 students 2010 JK-6). •Avoids community fragmentation 	
Facility upgrades, accessibility concerns	Recommendation Grand View given consideration for priority on accessibility project list. Grand View likely to require upgrades to Learning Resource Centre as well as a small addition .	



Scenario 6a

•Grand View gets Area A2 from Preston

Area	2010 JK-6
A	133
A1	58
A2	75
B	22
C	156
D	90
E	18
F	193
G	114
J	39





Scenario 6a – Area A division detail





Scenario 6a: Grand View gets revised Area A2 from Preston.

School	Built Capacity	2010		2014		2018	
		FTE	% Capacity	Total Students	% Capacity	Total Students	% Capacity
Preston P.S.	259	285.5	110%	321	124%	297	115%
Parkway P.S.	236	186.5	79%	240	102%	255	108%
Grand View P.S.	216	200	93%	226	105%	206	95%
Total	711	672	95%	787	111%	758	107%

- Preston P.S. reduced enrolment however still above capacity, peaks in midterm.
- Parkway P.S. decreases in short term, enrolment increases as development within boundary occurs
- Grand View P.S. increases enrolment, remains approximately at capacity.



Scenario 6a

Objective	Meets	Doesn't meet
Align facility/enrolment over longer term	Preston enrolment/portables reduced. Grand View enrolment increased. Parkway enrolment increases in long term	
Regard for Good Schools Standing Committee Report	More equitable programming b/w facilities.	
Financially feasible	Yes	
Address student transitions, avoid community fragmentation	1 area (A2) experiences transition to a new school (75 students 2010 JK-6).	Fragmentation of Area A
Facility upgrades, accessibility concerns	Recommendation Grand View given consideration for priority on accessibility project list. Grand View likely to require upgrades to Learning Resource Centre	



- Website: www.wrdsb.on.ca
 - » Boundary Studies and Accommodation Reviews
 - » Preston Area Elementary Schools Boundary Study
- E-mail: boundaryfeedback@wrdsb.on.ca
- Phone: 519-570-0003 ext. 4419