



Breslau/Stanley Park Elementary Schools Pupil Accommodation Review

**Accommodation Review Committee
Accommodation Report and
Recommendations**

April 18, 2011

Table of Contents

Executive Summary.....	3
Introduction.....	5
Background	5
Breslau/Stanley Park Accommodation Review	5
Breslau/Stanley Park Review Area Schools.....	6
Rationale for a Pupil Accommodation Review.....	6
Accommodation Review Committee (ARC).....	8
Membership.....	8
Timelines and Activities.....	9
Public Information and Access	10
School Information Profiles	11
Review Objectives.....	11
Accommodation Review Committee Recommendations.....	12
For Scenario 1.....	13
<i>Scenario 1 Recommendation #1: Breslau P.S. Addition/Renovations.....</i>	<i>13</i>
<i>Scenario 1 Recommendation #2: Mackenzie King P.S. Addition/Renovations and Boundary Change.....</i>	<i>14</i>
<i>Scenario 1 Recommendation #3: Smithson P.S. Site Work and Boundary Change</i>	<i>16</i>
<i>Scenario 1 Recommendation #4: Stanley Park P.S. Boundary Change.....</i>	<i>17</i>
<i>Scenario 1 Recommendation #5: Be Mindful of Transitions</i>	<i>19</i>
For Scenario 2.....	19
<i>Scenario 2 Recommendation #1: Breslau P.S. Addition/Renovations.....</i>	<i>19</i>
<i>Scenario 2 Recommendation #2: Stanley Park P.S. Closure</i>	<i>19</i>
<i>Scenario 2 Recommendation #3: Mackenzie King P.S. Rebuild and Boundary</i>	<i>20</i>
<i>Scenario 2 Recommendation #4: Crestview P.S. Addition/Renovation and Boundary</i>	<i>23</i>
<i>Scenario 2 Recommendation #5: Smithson P.S. Site Work and Boundary Change</i>	<i>24</i>
<i>Scenario 2 Recommendation #6: Grade 7/8 Boundary for Lackner Woods P.S. and Franklin P.S. students.....</i>	<i>25</i>
<i>Scenario 2 Recommendation #7: Be Mindful of Transitions</i>	<i>27</i>
Conclusion.....	27
Appendix A: Scenario 1 Summary.....	29
Appendix B: Scenario 2 Summary.....	33
Appendix C: Timing of Implementation (Scenario 1).....	37
Appendix D: Timing of Implementation (Scenario 2).....	38

Executive Summary

This report is intended to advise and inform the WRDSB Board of Trustees of the information gathered and consultation conducted by the Accommodation Review Committee (ARC) in order to develop the recommendations provided in this report.

The decision on the accommodation of pupils in the Breslau/Stanley Park Elementary Schools Pupil Accommodation Review Area is made by the elected Board of Trustees.

After reviewing a number of options to address the issues that initiated this review, the Breslau/Stanley Park ARC agreed upon Scenarios 1 and 2 as equally viable strategies for pupil accommodation in the Breslau/Stanley Park review area. There is no significance to the order of presentation of these scenarios.

Scenario 1

Scenario 1 parallels the status quo, maintaining a senior (7-8) elementary facility with JK-6 feeder schools. The ARC's recommendations for Scenario 1 detailed in this report are:

1. Breslau P.S. addition/renovations and boundary change with Mackenzie King P.S. and Stanley Park P.S.
2. Mackenzie King P.S. addition/renovations and boundary change with Breslau P.S.
3. Smithson P.S. site work and boundary change with Mackenzie King P.S.
4. Stanley Park P.S. boundary change with Breslau P.S. and Grand River South/Sunnyside review area

A timeline of the implementation of these recommendations is attached as Appendix C.

Scenario 2

This scenario closes Stanley Park P.S., a senior 7-8 elementary facility, and implements JK-6 and JK-8 elementary program organizations. The ARC's recommendations for Scenario 2 detailed in this report are:

1. Breslau P.S. addition/renovations and boundary change with Mackenzie King P.S.
2. Stanley Park P.S. closure
3. Mackenzie King P.S. rebuild on site and boundary change with Breslau P.S./Smithson P.S. and Stanley Park P.S.
4. Crestview P.S. addition/renovation and boundary change with Stanley Park P.S.
5. Smithson P.S. site work and boundary change with Mackenzie King P.S.
6. Grade 7/8 boundary change for students graduating from Lackner Woods P.S. and Franklin P.S.

A timeline of the implementation of these recommendations is attached as Appendix D.

Whichever strategy the Board determines, the ARC further recommends that the implementation be mindful of student transitions.

Introduction

The purpose of this report is to provide to the Waterloo Region District School Board's (WRDSB) Board of Trustees the recommendations of the Breslau/Stanley Park Elementary Schools Pupil Accommodation Review Committee (ARC) on pupil accommodation within the Breslau/Stanley Park Review Area.

Background

In June 2009, the Ontario Ministry of Education released a revised version of the *Pupil Accommodation Review Guideline*. The *Guideline* provides direction to school boards regarding pupil accommodation reviews undertaken to determine the future of a school or group of schools.

The *Guideline* ensures: "that where a decision is taken by a school board regarding the future of a school, that decision is made with the full involvement of an informed local community and it is based on a broad range of criteria regarding the quality of learning experience for students."

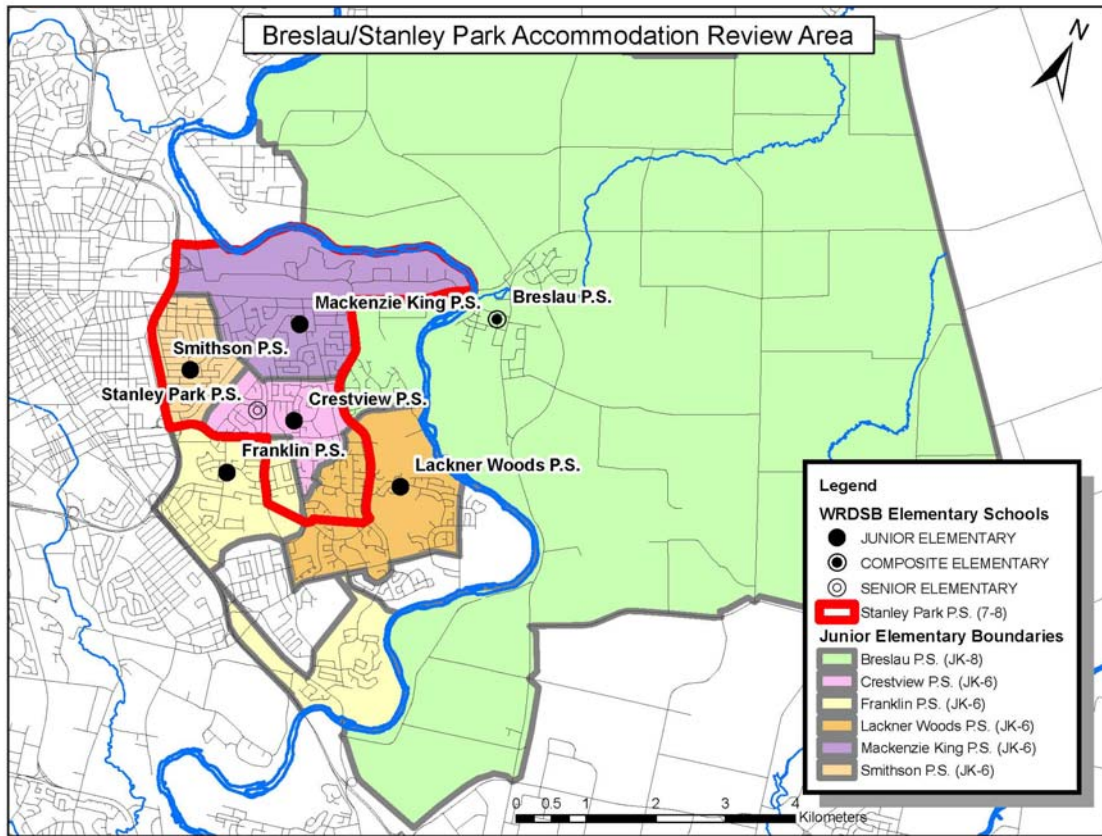
In November 2009, the WRDSB approved its own policy, Board Policy 4000, following the provincial *Guideline*.

On November 23, 2009, the WRDSB (Board) approved a motion to initiate two pupil accommodations reviews, the Breslau/Stanley Park Accommodation Review (including Breslau, Crestview, Franklin, Lackner Woods, Mackenzie King, Smithson and Stanley Park Public Schools) and the Grand River South/Sunnyside Accommodation Review (including Franklin, Howard Robertson, Lackner Woods, Rockway, Sheppard, Sunnyside and Wilson Avenue Public Schools). Given of the split feeds from Franklin and Lackner Woods Public Schools to the senior elementary program at Stanley Park and Sunnyside Public Schools, these two schools were included in both reviews. Due to the adjacent nature of the two review areas, over the course of the accommodation review processes the Accommodation Review Committees (ARCs) held a joint meeting to facilitate the sharing of information and to coordinate potential inter-review area scenario development.

Breslau/Stanley Park Accommodation Review

The Breslau/Stanley Park review area encompasses a large geographic area (see Figure 1), comprised of several neighbourhoods in the City of Kitchener, that make up the current Stanley Park P.S. senior elementary boundary as well as the Breslau P.S. boundary, located in the Township of Woolwich. The area generally contains older established neighbourhoods; however, pockets of new residential development are placing localized pressure on facilities.

Figure 1: Breslau/Stanley Park Accommodation Review Area



Breslau/Stanley Park Review Area Schools

The following is a summary of the schools in the review area:

School	Built Capacity (2010)	JK-6	JK-8	7-8	Site Size (acres)	Year Built (original construction)
Breslau P.S.	325		•		8.28	1950
Crestview P.S.	507	•			9.87	1966
Franklin P.S.	582	•			6.30	1963
Lackner Woods P.S.	368	•			7.02	2001
Mackenzie King P.S.	199	•			7.20	1954
Smithson P.S.	299	•			8.00	1953
Stanley Park P.S.	441			•	5.80	1964

Rationale for a Pupil Accommodation Review

There are several reasons the WRDSB initiated an accommodation review for the Breslau/Stanley Park area. These reasons include:

- **Localized residential development**

Recent municipal servicing brought across the Grand River to Breslau from Kitchener has allowed typically dense urban residential development to proceed (within the town). This development has significantly increased enrolment at Breslau P.S. to the point where it is overcapacity and operating with 8 portables. Further development planned in the coming years around the school is projected to place additional pressure on the built facility of Breslau P.S. if no action is taken.

There is also one area of future residential development remaining in this area of Kitchener on the west side of the Grand River bounded by Victoria Street North, Lackner Boulevard and Keewatin Avenue.

- **Enrolment changes/shifts**

One of the major challenges the Board faces is accommodating a mobile population in stationary facilities built at the time for the programs and enrolment of the day. Due to demographic and population changes, some schools in the review area (Franklin P.S., Crestview P.S., Mackenzie King P.S., Smithson and Stanley Park P.S.) have been experiencing enrolment decline – a system-wide issue over the past several years; whereas others are experiencing growth (Breslau P.S. and Lackner Woods P.S.). Tables 1 and 2 illustrate the historic and projected enrolment (with status quo boundaries) at each of the facilities in the review area.

Table 1: Breslau/Stanley Park Historic Enrolment (2005- 2010)

School	Total Students by Year					
	2005	2006	2007	2008	2009	2010
Breslau P.S.	373	384	389	413	433	483
Crestview P.S.	516	523	516	473	437	445
Franklin P.S.	633	618	586	608	608	612
Lackner Woods P.S.	436	508	530	556	568	590
Mackenzie King P.S.	245	229	224	209	198	182
Smithson P.S.	226	205	210	219	205	206
Stanley Park P.S.	447	429	410	388	428	440

Table 2: Breslau/Stanley Park Projected Enrolment with Status Quo Boundaries (2011- 2016)

School	Projected Total Students by Year					
	2011	2012	2013	2014	2015	2016
Breslau P.S.	503	556	602	653	669	731
Crestview P.S.	414	418	422	420	437	459
Franklin P.S.	565	568	534	548	559	551
Lackner Woods P.S.	624	666	675	696	691	693
Mackenzie King P.S.	194	202	202	181	194	187
Smithson P.S.	204	206	210	207	212	216
Stanley Park P.S.	375	356	369	354	324	288

- ***Evolving curriculum direction/school organization***

The Ontario Ministry of Education Elementary Curriculum is a continuum for Grades 1 to 8 and the Board has past approved a policy (Policy 3002 – Elementary School Size and Configuration) that speaks to this curriculum direction. In the Stanley Park area, the WRDSB operates JK-6 schools and one 7-8 facility. Breslau P.S is currently the only JK-8 facility in the review area.

On October 27, 2009, the Ministry of Education announced its intentions to implement the Early Learning Program (ELP), now known as Full-Day Kindergarten (FDK) starting in September 2010 with the goal to have FDK fully implemented in all schools across the province by 2014/15. As a result of implementation of this initiative, the current requirement for kindergarten classrooms across the Board will be almost doubled.

Accommodation Review Committee (ARC)

The purpose of the ARC, as outlined in the Terms of Reference, was to conduct a review of the Breslau/Stanley Park review area elementary schools of the WRDSB in order to advise and provide recommendations that will inform the final decision made by the Board of Trustees on whether a school or schools should be either closed or consolidated.

Membership

The ARC membership was composed of both community members and WRDSB staff as outlined in Board Policy 4000.

Breslau P.S.

Principal: William Grobe (until October 2010), Darv Easton (November 2010 – April 2011) and Frank Ewald (as of April, 2011)

Parents: Doug Hudson, Nancy Allan Catton

Crestview P.S.

Principal: Carolyn Griffiths

Parents: Lesley Kraehling, Tania Hunter

Franklin P.S.

Principal: Jane Pritchard

Parents: Anessa Selcage, Janice Scherer

Lackner Woods P.S.

Vice-Principal: Libby Martz

Parents: Laurie Tremble, T. Ritchie

Mackenzie King P.S.

Principal: Pauline Shiry

Parents: Tracy Jasmins, Sean Mahoney

Smithson P.S.

Principal: Trish Starodub (until June 2010), Carolyn Graham (as of September 2010)

Parents: Troy Starr, Edie Paul (until August 2010), Aimie LeRuez (as of November 2010)

Stanley Park P.S.

Principal: Rob MacQueen

Parents: Mark Richardson, Crysta Fernandez

Community Representation

Kathy Waybrant

Area Superintendent

Superintendent of Education: Gregg Bereznick

Municipal Representation

City of Kitchener: Brian Bateman

Township of Woolwich: John Scarfone

Facilities Staff (Planning)

Manager of Planning: Chris Smith (ARC Chair)

Manager of Capital Projects: Ron Dallan

Senior Planners: Nathan Hercanuck, Lauren Manske

Recording Secretary: Mary Hingley

It is important to note that Board staff (including school administrators) are non-voting members of the ARC.

Timelines and Activities

The ARC ensured that the minimum timelines as established by both the Ministry of Education *Guideline* and the WRDSB Policy 4000 for the accommodation review process were met.

Throughout the review, a total of four public meetings were held to provide opportunity for a wide range of school and community groups to participate in the consultation. Public meetings were advertised in three area newspapers (the *Waterloo Region Record*, the *Kitchener Citizen East Edition* and the *Woolwich Observer*), on the WRDSB website, in school newsletters and signs and in notices sent home with each student in the review area.

The following is a summary of the activities of the ARC prior to submission of this report.

Activity	Date	Location
Board approval to commence review	November 23, 2009	Education Centre
Public Meeting #1	February 2, 2010	Grand River C.I.
ARC Meeting #1	February 11, 2010	Stanley Park P.S.
ARC Meeting #2	February 24, 2010	Stanley Park P.S.
ARC Meeting #3	March 10, 2010	Stanley Park P.S.
ARC Meeting #4	March 24, 2010	Stanley Park P.S.
ARC Meeting #5	April 7, 2010	Stanley Park P.S.
ARC Meeting #6	May 5, 2010	Edna Staebler P.S.
ARC Meeting #7	May 19, 2010	Stanley Park P.S.
Public Meeting #2	May 25, 2010	Stanley Park P.S.
ARC Meeting #8	June 9, 2010	Stanley Park P.S.
ARC Meeting #9	September 22, 2010	Stanley Park P.S.
ARC Meeting #10	October 6, 2010	Stanley Park P.S.
Joint ARC Meeting #11	October 12, 2010	Education Centre
ARC Meeting #12	November 3, 2010	Stanley Park P.S.
ARC Meeting #13	November 17, 2010	Stanley Park P.S.
Public Meeting #3	November 24, 2010	Mackenzie King P.S.
ARC Meeting #14	January 12, 2011	Mackenzie King P.S.
ARC Meeting #15	February 9, 2011	Mackenzie King P.S.
ARC Meeting #16	February 23, 2011	Stanley Park P.S.
ARC Meeting #17	March 8, 2011	Stanley Park P.S.
Public Meeting #4	March 30, 2011	Stanley Park P.S.
ARC Meeting #18	April 6, 2011	Stanley Park P.S.

Public Information and Access

In addition to the four public meetings, all relevant accommodation review information was posted on the WRDSB website and was available in hard copy in binders kept at each of the schools in the review area and at the Education Centre.

Minutes of the ARC meetings and public meetings where a formal presentation was conducted were posted on the WRDSB website for public access. Information provided at public meeting open houses and other requested information was also posted on the WRDSB website and made available in hard copy upon request.

School Information Profiles

The ARC customized the generic School Information Profile template and Board staff completed School Information Profiles for each of the schools in the review area. These School Information Profiles, along with other relevant information were made available to the public on the WRDSB website and in hard copy at each of the schools in the review area.

The School Information Profiles consider four perspectives: value to the student, the Board, the community and the local economy. The ARC took the position that all the schools were *equal* in value in providing its respective elementary education program. The School Information Profiles provided the foundation for discussion and analysis of accommodation options.

Review Objectives

Prior to developing accommodation options, or scenarios, the ARC set the following review objectives, which aim to address the issues identified by the Board, the ARC and members of the public and to provide criteria to evaluate the accommodation options.

- Provide current and future students in the review area with equitable program opportunities to ensure their success by:
 - Having regard for Board Policy 3002 – Elementary School Size and Configuration
 - Reviewing elementary school organizations (i.e. JK-6, 7-8, JK-8)
 - Recognizing the distribution of Special Education, French Immersion and English as a Second Language programs, and ensuring these programs are accommodated with any proposed changes
- Make the best use of Capital and Operating resources by:
 - Maximizing the number of students within walking distance to school
 - Maximizing the number of students in permanent accommodation
 - Eliminating, where practical, underutilized space and introduce new facility
 - Identifying facility requirements for new mandates, i.e. Association of Ontarians with Disabilities Act (AODA), Full-Day Kindergarten (FDK)
 - Improving retained facilities (i.e. site, layout, security, access, facility)
- Develop a solution that is long-term (approximately 10 years) by:
 - Creating more consistent feeds between the secondary and senior elementary program
 - Addressing future development plans and demographic shifts
 - Minimizing the number of student transitions as a result of proposed boundary changes

The ARC agreed at the outset these objectives would be the measure used to evaluate the various scenarios developed as a preferred accommodation options for the Breslau/Stanley Park review area.

Accommodation Review Committee Recommendations

Looking at the entire review area and consulting with parents, guardians, school councils, students, staff, and other interested parties, the ARC explored several accommodation scenarios. It became apparent early on that the Breslau/Stanley Park community places very high value and pride in the educational facilities in the area. Walkable, local schools were important to members of this community. This was most apparent when the ARC considered an accommodation option that closed two of the smaller schools in the review area in order to consolidate them in one new facility midway between the two schools. The community and the ARC did not support this option as it left two areas under serviced and large boundaries that would result in increased transportation.

By the third public meeting of the accommodation review process, the ARC had settled on two scenarios to accommodate students within the Breslau/Stanley Park review area, Scenarios 1 and 2, the details of which are provided on Appendix A and Appendix B of this report.

Prior to the fourth public meeting, with particular regard for the review objectives, the ARC agreed that Scenario 2 provided the better solution to address the issues and concerns in the review area with respect to student accommodation. This conclusion was reached though a majority vote (9-5 in favour of Scenario 2 with 3 members abstaining) at the March 8, 2011 ARC meeting. As a result, the ARC brought forward Scenario 2 as the “preferred” scenario and Scenario 1 as an “alternate” choice to share with the public at Public Meeting #4 held on March 30, 2011.

Again, the connection of the community to their schools in particular the senior elementary program at Stanley Park P.S. was evident, with a large turnout of parents, students, staff and community members opposed to the closing of that school as proposed in Scenario 2.

At the eighteenth ARC meeting, on April 6, 2011, a motion was brought forward to remove the “preferred” and “alternate” designations on the two scenarios and recommend both Scenarios 1 and 2 on equally capable of addressing the objectives of the review. The rationale behind this motion is that some members of the ARC felt it was necessary to validate the community concerns with Scenario 2. This motion was carried by a majority vote (8-5 in favour of the motion with 4 members abstaining).

Therefore, *the ARC is recommending both scenarios as solutions to address the accommodation of students in the Breslau/Stanley Park review area.*

Listed below with details and rationale, are the key recommendations the Breslau/Stanley Park ARC is making to the WRDSB Board of Trustees for both Scenario 1 and Scenario 2.

It is important to note that all of the following recommendations are connected and the ARC recommends that the Board consider the recommendations and chronology (as shown on Appendix C and Appendix D) of each scenario as a complete set.

For Scenario 1 (complete details shown on Appendix A):

Scenario 1 Recommendation #1: Breslau P.S. Addition/Renovations

The Breslau/Stanley Park ARC recommends to the WRDSB that:

An addition consisting of 118 pupil places, or approximately 5 classrooms, be constructed at Breslau Public School, to be completed for September 2013; and that

The project includes renovation items such as relocating/expanding the office/administration area, accessibility and additional parking.

The enrolment projections for the review area clearly identified a lack of built capacity at Breslau P.S. to accommodate the growing elementary school enrolment from the new residential developments in the Breslau settlement area. Even if the students living in Kitchener currently attending Breslau P.S. are accommodated within their own community through a boundary change with Mackenzie King P.S. and Stanley Park P.S. as illustrated on Figures 2 and 4, the facility would still not be able to fully accommodate all the projected students from within Breslau itself.

According to data and information received from Township of Woolwich staff, approved and planned residential development would not warrant an additional elementary facility within Breslau at this time. Therefore, the ARC is recommending a small addition and interior renovations on the existing Breslau P.S. to accommodate the increasing enrolment.

Table 3 shows the projected enrolment for Breslau P.S. with the implementation of Scenario 1.

Table 3: Projected enrolment at Breslau P.S. with boundary change

Year	2014	2015	2016	2017	2018	2019	2020	2021
JK-6 Enrolment	358	345	362	366	363	347	321	301
7-8 Enrolment	98	81	99	109	116	122	120	113
Total Enrolment	456	426	461	475	479	469	441	414

One of the concerns expressed by the Breslau P.S. community was the size of the senior (Grades 7 and 8) portion of the school population should the enrolment be reduced by the approval of the boundary change with Stanley Park P.S. (ARC recommendation # 4). As Table 3 indicates, the projected enrolment at Breslau P.S., although reduced from its current numbers, will have enough students to generate approximately 3-4 senior classes and Board Policy 3002 suggests that the ideal minimum number of classes is more than 2 per grade in Grades 7 and 8.

Scenario 1 Recommendation #2: Mackenzie King P.S. Addition/Renovations and Boundary Change

The Breslau/Stanley Park ARC recommends to the WRDSB that:

An addition consisting of 193 pupil places, or approximately 8 classrooms, be constructed at Mackenzie King Public School, to be completed for September 2014; and that

The project includes items such as relocating/expanding the office/administration area, accessibility and additional parking; and that

The Mackenzie King P.S. boundary be modified to include a portion of the Breslau P.S. boundary, illustrated in Figure 2, effective September 2014; and that

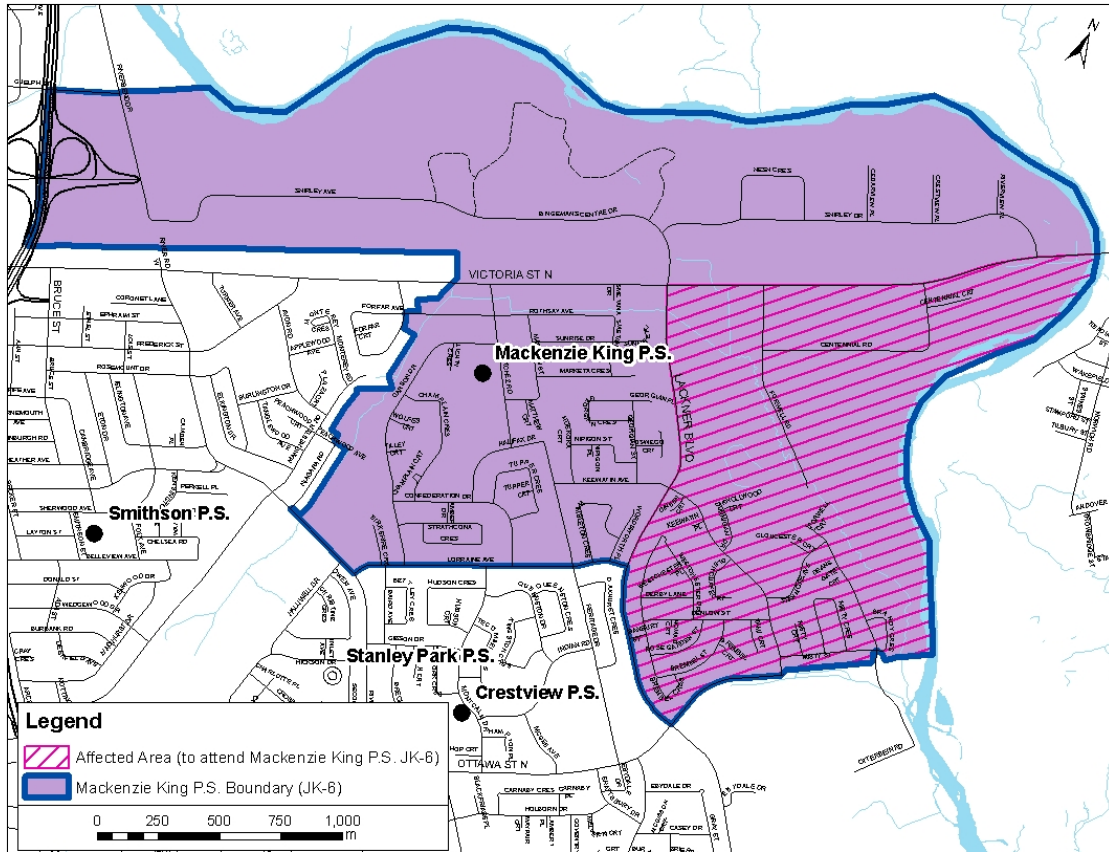
Students entering Junior Kindergarten (JK) in September 2013 in the affected area be given the option to enrol at either Mackenzie King P.S. or Breslau P.S. during the 2013/14 school year; and that

Students entering Grade 6 in September 2014 in the affected area be given the option to enrol at either Mackenzie King P.S. or Breslau P.S. during the 2014/15 school year; and that

Transportation be extended to those Grade 6 students choosing to attend Breslau P.S. for the 2014/15 school year based on transportation eligibility; and that

Transportation be provided to those JK students choosing to attend Mackenzie King P.S. for the 2013/14 school year based on transportation eligibility.

Figure 2: Junior Kindergarten to Grade 6 Boundary Recommendation for Mackenzie King Public School (Scenario 1)



Mackenzie King P.S. is one of the smallest facilities in the Board with a built capacity of 199 pupil places. By modifying its boundary to include the area of Kitchener currently bussed to Breslau P.S., the Board would achieve the desired enrolment relief for Breslau P.S., better balance elementary program sizes, and reduce transportation.

These changes would see a significant increase in the JK-6 enrolment of the school well above its built capacity. It is anticipated that the facility would need an addition and renovations consisting of approximately 8 classrooms for a net increase of 4 classrooms to the school. However, because the addition is proposed in part to replace the windowless, open concept classrooms, portables will be required temporarily to accommodate the displaced classes.

Mackenzie King P.S. has a generous school site at 7.2 acres and is adjacent to a municipal park. It is believed the addition could likely be constructed while the current organization continues to operate.

Table 4 shows the projected enrolment at Mackenzie King P.S. with this boundary change.

Table 4: Projected enrolment at Mackenzie King P.S. with boundary change (Scenario 1)

Year	2014	2015	2016	2017	2018	2019	2020	2021
Total Enrolment	295	338	362	369	357	362	349	340

Scenario 1 Recommendation #3: Smithson P.S. Site Work and Boundary Change

The Breslau/Stanley Park ARC recommends to the WRDSB that:

Approximately \$120,000 be allocated to Smithson P.S. to complete site work which includes improvements to the parking lot, prior to September 2014; and that

The Smithson P.S. boundary be modified to include a portion of the Mackenzie King P.S. boundary, as illustrated on Figure 3, effective September 2014; and that

Students entering Grade 6 in September 2014 in the affected area be given the option to enrol at either Smithson P.S. or Mackenzie King P.S. during the 2014/15 school year; and that

Transportation be extended to those Grade 6 students choosing to attend Mackenzie King P.S. for the 2014/15 school year based on transportation eligibility; and that

Students entering Junior Kindergarten (JK) in September 2013 in the affected area be given the option to enrol at either Smithson P.S. or Mackenzie King P.S. during the 2013/14 school year; and that

Transportation be extended to those JK students choosing to attend Smithson P.S. for the 2013/14 school year based on transportation eligibility.

Similar to Mackenzie King P.S., Smithson P.S. is also a JK- 6 facility struggling with a small organization. While Smithson P.S. has a larger built capacity than Mackenzie King P.S. (299 versus 199 pupil places) its current enrolment is 183.5 FTE. The proposed boundary change would see the Smithson P.S. boundary expanded to include an area currently designated to attend Mackenzie King P.S., increasing the program size at the facility closer to the recommendations of Board Policy 4002. Given the current excess capacity at Smithson P.S. it is believed that the facility could handle the estimated additional 40-50 students without the need for additional built capacity (see Table 5 for projected enrolment at Smithson P.S.). However, it is recognized that the facility would require some site improvements to handle the additional enrolment and staff. The ARC suggests that the specialized hearing program remain at Smithson P.S. because the staff and resources are already in place.

Figure 3: Boundary Recommendation for Smithson Public School (Scenario 2)

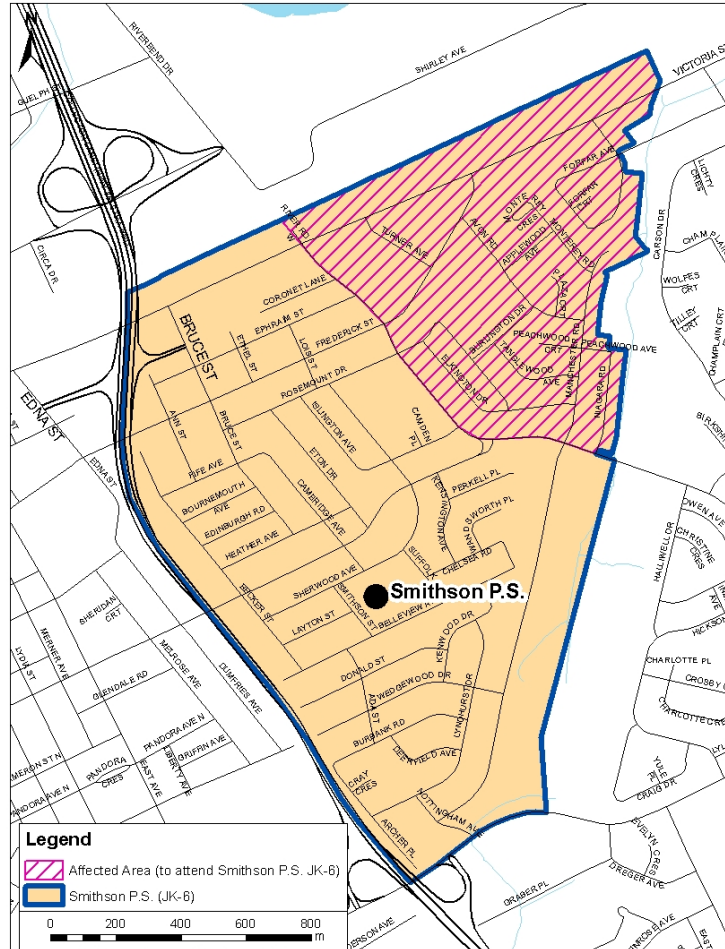


Table 5 shows the projected enrolment at Smithson P.S. with this boundary change.

Table 5: Projected enrolment at Smithson P.S. with boundary change

Year	2014	2015	2016	2017	2018	2019	2020	2021
Total Enrolment	251	259	255	254	242	241	244	247

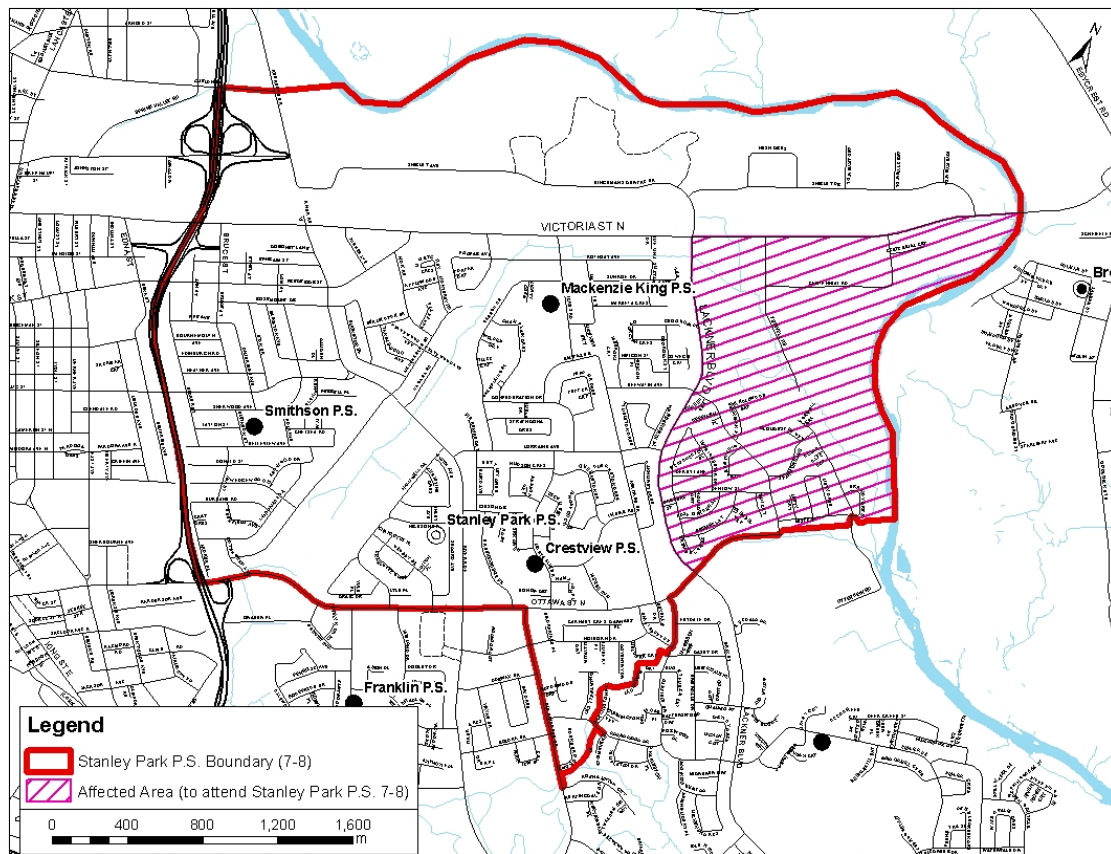
Scenario 1 Recommendation #4: Stanley Park P.S. Boundary Change

The Breslau/Stanley Park ARC recommends to the WRDSB that:

The Stanley Park P.S. boundary be modified to include a portion of the Breslau P.S. boundary, illustrated in Figure 4, effective September 2014 for Grade 7 and September 2015 for Grade 7 and 8; and that

The senior elementary (Grade 7 and Grade 8) boundary for students in the Lackner Woods P.S. and Franklin P.S. boundaries, as illustrated on Figure 8 be adjusted as recommended by the Grand River South/Sunnyside Elementary Schools Pupil Accommodation Review, effective September 2014 for Grade 7 and September 2015 for Grade 7 and 8.

Figure 4: Boundary Recommendation for Stanley Park Public School (Scenario 1)



Due to the enrolment pressures at Breslau P.S. the ARC is recommending that the boundary change take place between Breslau P.S. and Stanley Park P.S. for Grades 7 and 8.

This scenario requires the students living in Kitchener and currently attending Breslau P.S. to transition to two schools – Mackenzie King P.S. for JK-6 and Stanley Park P.S. for 7-8, which is a change for this community as they have historically attended a JK-8 facility (Breslau P.S.).

Table 6 shows the projected enrolment at Stanley Park P.S. with this boundary change.

Table 6: Projected enrolment at Stanley Park P.S. with boundary change (Scenario 1)

Year	2014	2015	2016	2017	2018	2019	2020	2021
Total Enrolment	350	326	297	318	353	350	339	343

Scenario 1 Recommendation #5: Be Mindful of Transitions

The Breslau/Stanley Park ARC recommends to the WRDSB that:

Every effort be made to smooth the transition for students, families and staff at the schools that are seeing significant change, be it new students, fewer students, new programs or facility changes.

There are three areas within the ARC's recommendations where the ARC felt that transitions could be reduced:

1. Allowing students to finish Grade 8 at their current school instead of changing for one year prior to going on to secondary school.
2. Allowing Junior Kindergarten students to enroll at the school to which their boundary will change for one year prior to the boundary change where feasible.
3. Allowing students to finish Grade 6 at their current school instead of changing for one year prior to going on to the senior elementary school.

For Scenario 2 (complete details shown on Appendix B):

Scenario 2 Recommendation #1: Breslau P.S. Addition/Renovations

The Breslau/Stanley Park ARC recommends to the WRDSB that:

An addition consisting of 118 pupil places, or approximately 5 classrooms, be constructed at Breslau Public School, to be completed for September 2013; and that

The project includes renovation items such as relocating/expanding the office/administration area, accessibility and additional parking.

Since this recommendation is identical for both scenarios, rationale for is provided under Scenario 1 Recommendation #1.

Scenario 2 Recommendation #2: Stanley Park P.S. Closure

The Breslau/Stanley Park ARC recommends to the WRDSB that:

Stanley Park Public School be closed and the senior elementary program be incorporated into Mackenzie King P.S. and Crestview P.S., effective August 2015; and that

For the 2014/15 school year, Stanley Park P.S. operates Grade 8 classes only.

Mid-way through the accommodation review, information was presented that there were structural issues with the facility's roof that could potentially be a costly fix. Consulting engineers however, developed a less costly, possibly permanent repair and this no longer became an issue.

Since there are no further urgent structural deficiencies with the facility, and the projected enrolment at the school is expected to maintain its numbers at or around capacity (provided the students living in Kitchener who are currently attending Breslau P.S. are included in the Stanley Park P.S. boundary), the ARC's discussions focused on elementary program models and the geographic distribution of existing facilities.

There was considerable discussion about this issue and the ARC invited the Assistant Superintendent of Learning Services – Program (Student Success) to attend an ARC meeting to share the research and information the Board is using to determine what the best instructional methods/models are for students. The conversation became focused on transitions and student achievement. In short, the research presented indicated that fewer transitions are better for students throughout their school career, especially for 'at-risk' students.

Although it was not the mandate of the ARC to choose the most appropriate instructional model, those supporting Scenario 2 felt the arguments for JK-8 organizations (as set out in Board's Policy 3002), the condition of existing facilities and long-term operating cost savings were compelling enough to consider closing the senior elementary school in the area (Stanley Park P.S.).

Scenario 2 Recommendation #3: Mackenzie King P.S. Rebuild and Boundary

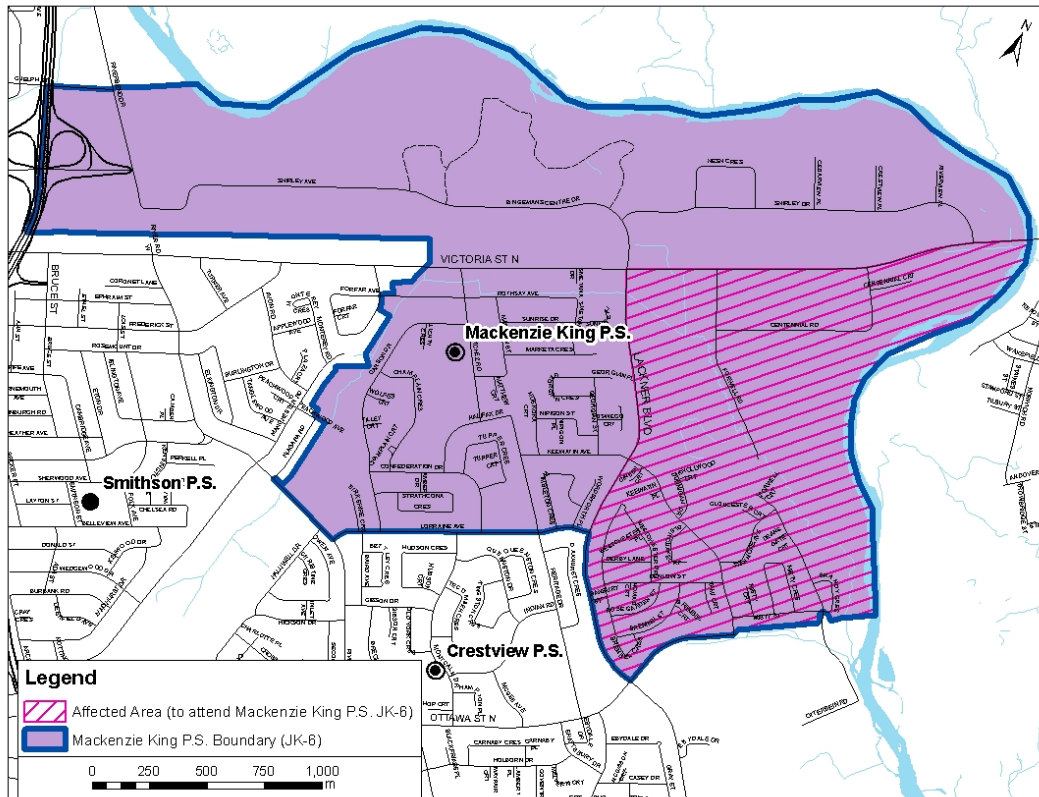
The Breslau/Stanley Park ARC recommends to the WRDSB that:

A new Mackenzie King Public School facility, of approximately 500 pupil places, be constructed on its existing site, as a Junior Kindergarten to Grade 8 school, to open for September 2014 as a JK-7 and September 2015 as a JK-8 school; and that

The Junior Kindergarten to Grade 6 boundary for the new Mackenzie King P.S. include a portion of the Breslau P.S. boundary, as illustrated in Figure 5, effective September 2014; and that

The senior elementary boundary for the new Mackenzie King P.S. include the Smithson P.S. boundary, and portions of the Breslau P.S. boundary, as illustrated in Figure 6, effective September 2014 for Grade 7 and September 2015 for Grade 7 and Grade 8.

Figure 5: Junior Kindergarten to Grade 6 Boundary Recommendation for Mackenzie King Public School (Scenario 2)



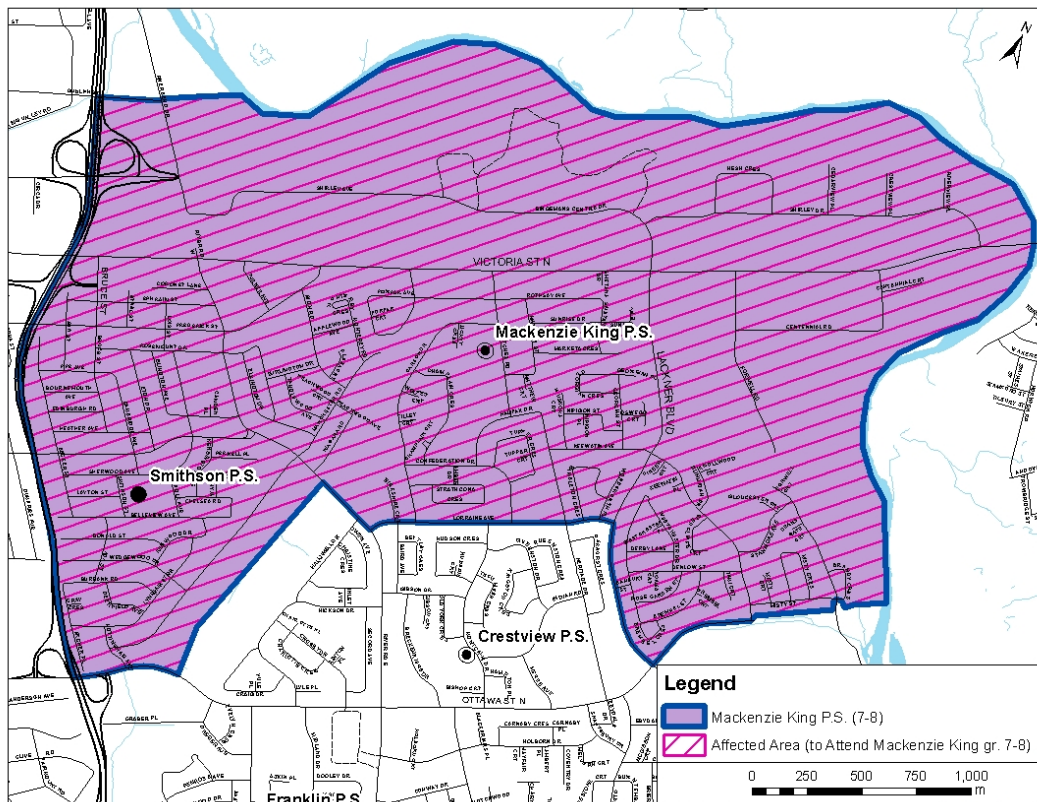
By modifying the Mackenzie King P.S. boundary to include the area of Kitchener currently bussed to Breslau P.S., and housing a portion of the Stanley Park P.S. senior elementary program, the Board would achieve the desired enrolment relief for Breslau P.S., better balance elementary program sizes, reduce transportation, and reduce the number of student transitions by moving to a JK-8 elementary program model. It should be noted however that transitions will still exist for the graduating Smithson P.S. students, as they will attend Mackenzie King P.S. for the senior (7-8) elementary program. The ARC did not consider adding a senior elementary program to Smithson P.S. to avoid this transition because the enrolment would not be high enough at both Mackenzie King P.S. and Smithson P.S. to offer a strong senior elementary program. Table 7 shows the projected enrolment at Mackenzie King P.S. with these changes.

Table 7: Projected enrolment at Mackenzie King P.S. with boundary change

Year	2014	2015	2016	2017	2018	2019	2020	2021
JK-6 Enrolment	309	338	362	369	357	362	349	340
7-8 Enrolment	95	174	161	173	187	178	175	180
Total Enrolment	404	512	523	542	544	540	524	520

These changes would see a significant increase in the JK-6 enrolment of the school well above its built capacity as well as the need to construct the appropriate space to house the senior 7-8 program (e.g., lockers, Science and Technology, Music, Art classrooms and a double gymnasium). Given the amount of additional accommodation necessary, as well as the age, condition, configuration (e.g., windowless and open concept classrooms) and energy inefficiency of the existing building, it is proposed that the needs for the school would best be addressed with new construction rather than an addition to the existing facility. Mackenzie King P.S. has a generous school site at 7.2 acres and is adjacent to a municipal park. It is believed the new facility could likely be constructed on site while the current organization continues to operate in the existing building; however, if the construction could not take place on the site without significantly interfering with the existing school operation, the current organization may have to be temporarily relocated elsewhere.

Figure 6: Grade 7 and 8 Boundary Recommendation for Mackenzie King Public School (Scenario 2)



The ARC suggests that the Board transfer the Special Education classes currently offered at Stanley Park P.S. to the new Mackenzie King P.S. as the new construction will provide the opportunity to construct purpose-built spaces for these students/classes.

Scenario 2 Recommendation #4: Crestview P.S. Addition/Renovation and Boundary

The Breslau/Stanley Park ARC recommends to the WRDSB that:

An addition consisting of 167 pupil places, or approximately 7 classrooms, be constructed at Crestview Public School, to be completed for September 2014; and that

The project includes, senior elementary school rooms/infrastructure, modifications to the office/administration area and library, and accessibility; and that

The senior elementary boundary for Crestview P.S. match the existing JK-6 boundary, as illustrated on Figure 7, effective September 2014 for Grade 7 and September 2015 for Grade 7 and Grade 8; and that

The senior Partial French Immersion program located at Stanley Park P.S. be relocated to Crestview P.S., effective September 2014 for Grade 7 and September 2015 for Grade 7 and Grade 8.

With the closure of Stanley Park P.S. and the move to a JK-8 elementary program model in the review area there will be the requirement to construct new capacity to accommodate the senior elementary program currently housed at Stanley Park P.S. It is proposed that along with Mackenzie King P.S., Crestview P.S. would provide the other portion of the 7-8 program in the review area. As a JK-8 organization, Crestview P.S. would meet size the guidelines of Board Policy 3002 with respect to the recommended number of classes per grade.

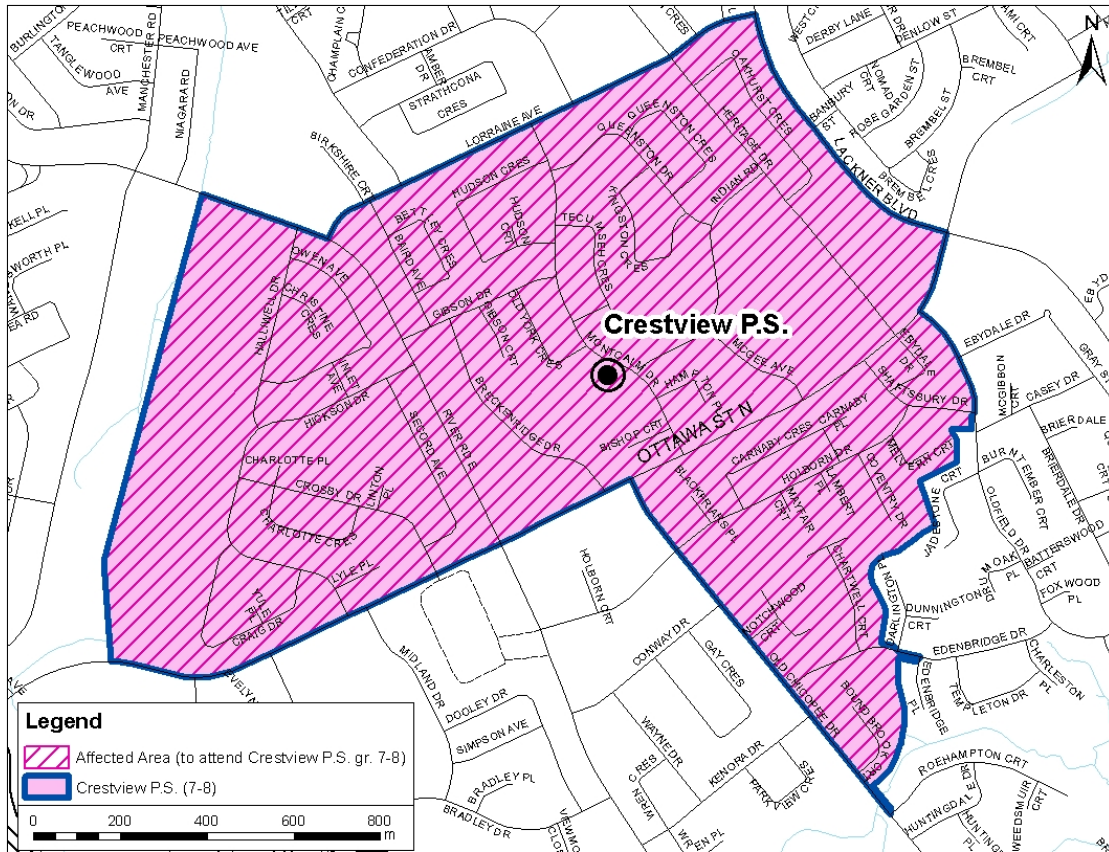
As well, the ARC suggests that the senior elementary partial French Immersion program currently housed at Stanley Park P.S. relocate to Crestview P.S. because it already has partial French Immersion from Grades 1-6, with established staff and resources. That program currently includes students from Sheppard P.S. and Suddaby P.S. among others.

Table 8 shows the projected enrolment at Crestview P.S. with these changes.

Table 8: Projected enrolment at Crestview P.S. with boundary change

Year	2014	2015	2016	2017	2018	2019	2020	2021
JK-6 Enrolment	420	437	459	471	467	471	474	480
7-8 Enrolment	83	152	136	145	166	172	164	163
Total Enrolment	503	589	595	616	633	643	638	643

Figure 7: Grade 7 and 8 Boundary Recommendation for Crestview Public School (Scenario 2)



Scenario 2 Recommendation #5: Smithson P.S. Site Work and Boundary Change

The Breslau/Stanley Park ARC recommends to the WRDSB that:

Approximately \$120,000 be allocated to Smithson P.S. to complete site work which includes improvements to the parking lot, prior to September 2014; and that

The Smithson P.S. boundary be modified to include a portion of the Mackenzie King P.S. boundary, as illustrated on Figure 3, effective September 2014; and that

Students entering Junior Kindergarten (JK) in September 2013 in the affected area be given the option to enrol at either Smithson P.S. or Mackenzie King P.S. during the 2013/14 school year; and that

Transportation be extended to those JK students choosing to attend Smithson P.S. for the 2013/14 school year based on transportation eligibility.

Similar to Mackenzie King P.S., Smithson P.S. is also a JK- 6 facility struggling with a small organization. While Smithson P.S. has a larger built capacity than Mackenzie King P.S. (299 versus 199 pupil places) its current enrolment is 183.5 FTE. The proposed boundary change would see the Smithson P.S. boundary expanded to include an area currently designated to attend Mackenzie King P.S., increasing the program size at the facility closer to the recommendations of Board Policy 3002. Given the current excess capacity at Smithson P.S. it is believed that the facility could handle the estimated additional 40-50 students without the need for additional built capacity (see Table 9 for projected enrolment at Smithson P.S.). However, it is recognized that the facility would require some site improvements to handle the additional enrolment and staff. The ARC suggests that the specialized hearing program remain at Smithson P.S. because the staff and resources are already in place.

Table 9: Projected enrolment at Smithson P.S. with boundary change

Year	2014	2015	2016	2017	2018	2019	2020	2021
Total Enrolment	251	259	255	254	242	241	244	247

Scenario 2 Recommendation #6: Grade 7/8 Boundary for Lackner Woods P.S. and Franklin P.S. students

The Breslau/Stanley Park ARC recommends to the WRDSB that:

The senior elementary boundary for students in the Lackner Woods P.S. and Franklin P.S. boundaries, as illustrated on Figure 8, be adjusted as recommended by the Grand River South/Sunnyside Elementary Schools Pupil Accommodation Review, effective September 2014 for Grade 7 and September 2015 for Grade 7 and 8.

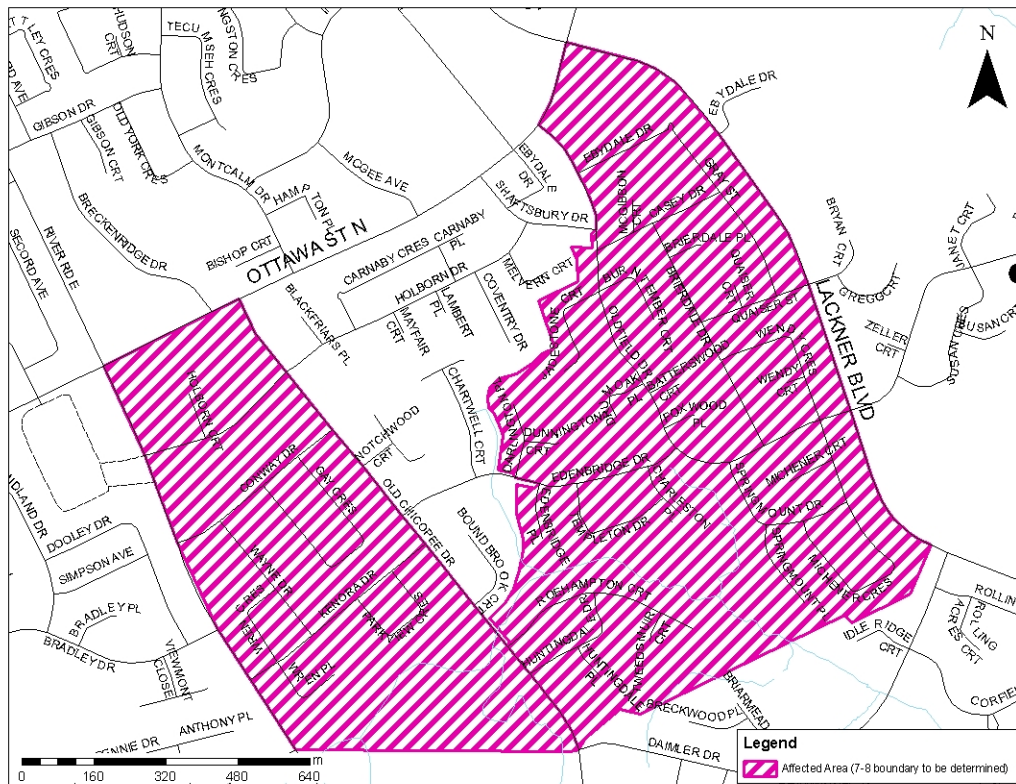
Currently students attending Franklin P.S. and Lackner Woods P.S. go to two different senior elementary schools depending on where they live in the catchment. Having inconsistent feeds creates many challenges for both the students and administration and is an issue often raised by parents.

The Breslau/Stanley Park ARC felt that it was best to address this issue by adjusting the boundary for students living within the Franklin P.S. and Lackner Woods P.S. boundaries so that all students from these two schools attend the same school for Grades 7 and 8 as their junior elementary peers. Since the majority of these two schools' boundaries fall within the Grand River South/Sunnyside Pupil Accommodation Review area, the ARC recommends that the boundaries for the areas identified on Figure 8 be determined as recommended by the Grand River South/Sunnyside ARC.

To ease the transition for these students, the ARC is also recommending that this change be phased in over a two year period, beginning in September 2014, allowing any students already enrolled at Stanley Park P.S. to finish there.

Since Franklin P.S. also has a partial French Immersion program (Grades 1-6), students enrolled in that program may choose to attend a school other than their home school to continue that program in Grades 7 and 8 (in this scenario, the logical choice would be Crestview P.S.) as there are no senior elementary partial French Immersion program currently offered in the Grand River South/Sunnyside review area.

Figure 8: Grade 7 and 8 Affected Area (Franklin P.S. and Lackner Woods P.S. students) Scenario 2



Scenario 2 Recommendation #7: Be Mindful of Transitions

The Breslau/Stanley Park ARC recommends to the WRDSB that:

Every effort be made to smooth the transition for students, families and staff at the schools that are seeing significant change, be it new students, fewer students, new programs or facility changes.

Experience shows that anticipating change can be very difficult for people. Students, staff and parents often worry about upcoming changes – new schools, bigger schools, smaller schools, different students, different facilities, and different teachers. It is important for the WRDSB to take a lead role in working with students, staff and families to make these changes easier.

With respect to these concerns, there are two areas within the ARC's recommendations where the ARC felt that transitions could be reduced:

1. Allowing students to finish Grade 8 at their current school instead of changing for one year prior to going on to secondary school.
2. Allowing Junior Kindergarten students to enroll at the school to which their boundary will change to one year prior to the boundary change, where feasible.

The ARC urges the Board to distribute the instrumental music resources from Stanley Park P.S. to the senior programs at Crestview P.S. and Mackenzie King P.S. allowing students at both facilities access to this opportunity.

The ARC further suggests that the Board keep communication lines open and transparent. Communication is very important; people need to know what is happening when and why. Communication should state the facts and recognize the concerns of the community, affected students, staff and families as well as the financial capabilities of the Board.

Conclusion

In developing the recommendations for both scenarios, the ARC had a strong focus on what is best for current and future students in the review area. The ARC also recognized the strong desire of residents in existing and developing neighbourhoods for community schools. The ARC's recommendations provide the Board with the ability to move forward and address the issues identified at outset of the review.

If the Board does not receive the necessary capital from the Ministry of Education to complete the recommended construction projects, the Board will have to determine interim measures to address the overcrowding at Breslau P.S. and recognize the small organizations at Mackenzie King P.S. and Smithson P.S.

In closing, the ARC would like to thank the parents and community members who attended the public meetings and expressed their concerns and provided input and feedback throughout the accommodation review process.

Appendix A: Scenario 1 Summary

Scenario 1 Programs and School Organizations

School	JK-6	JK-8	7-8	Partial French Immersion Classes	Congregated Spec. Ed. Classes
Breslau P.S.		•			
Crestview P.S.	•			•	
Franklin P.S.	•			•	•
Lackner Woods P.S.	•				
Mackenzie King P.S.	•				•
Smithson P.S.	•				•
Stanley Park P.S.			•	•	•

Scenario 1 Enrolment Projections 2011-2021

School	Built Capacity*	Projected Total Enrolment By Year										
		2011	2012	2013	2014	2015	2016	2017	2018	2019	2020	2021
Breslau P.S.	443	503	556	602	478	426	461	475	479	469	441	414
Crestview P.S.	507	414	418	422	420	437	459	471	467	471	474	480
Franklin P.S.	582	565	568	534	548	559	551	532	542	536	535	542
Lackner Woods P.S.	368**	624	666	675	696	691	693	665	649	624	611	607
Mackenzie King P.S.	360	194	202	222	295	338	362	369	357	362	349	340
Smithson P.S.	299	204	206	216	243	259	255	254	242	241	244	247
Stanley Park P.S.	441	375	356	369	350	326	297	318	353	350	339	343
Total	3000	2879	2972	3040	3030	3036	3078	3084	3089	3053	2993	2973

* anticipated capacity with proposed construction

**additional capacity anticipated with approval of the Grand River South/Sunnyside Accommodation Review Committee recommendations

Scenario 1 Estimated Capital Construction Costs

Location	Description	Estimated Cost
Breslau P.S.	118 pupil place addition (approx. 5 classrooms) Project includes: Full-Day Kindergarten (FDK) rooms, office relocation/expansion, accessibility and additional parking	\$2.45 M
Mackenzie King P.S.	193 pupil place addition (approx. 8 classrooms) Project includes: Full-Day Kindergarten (FDK) rooms, office relocation/renovation, accessibility and additional parking	\$3.37 M
Smithson P.S.	Site work and paving (parking lot improvements)	\$0.12 M
Total		\$5.94 M

- Estimates are preliminary based on a specific scope of work.
- Does not include any other major capital/maintenance projects required at remaining facilities (e.g. boiler replacement, HVAC, roof, windows, etc.)

Scenario 1 Operating Cost Considerations

Administrative Implications

School	Current Administration	Required Administration
Breslau P.S.	Principal, Vice Principal, Secretarial and Custodial staff	No change
Crestview P.S.	Principal, Vice Principal, Secretarial and Custodial staff	No change
Mackenzie King P.S.	Principal, Secretarial and Custodial staff	No change
Smithson P.S.	Principal, Secretarial and Custodial staff	No change
Stanley Park P.S.	Principal, Vice-Principal, Secretarial and Custodial staff	No change

No net administrative savings under this scenario.

Energy Consumption/Usage Implications

School	Current KWh/m ² *	Potential Change
Breslau P.S.	333	Slight reduction (with addition)
Crestview P.S.	240	No change
Mackenzie King P.S.	292	Reduction (with addition)
Smithson P.S.	215	No change
Stanley Park P.S.	284	No change

*Based on 2008 usage

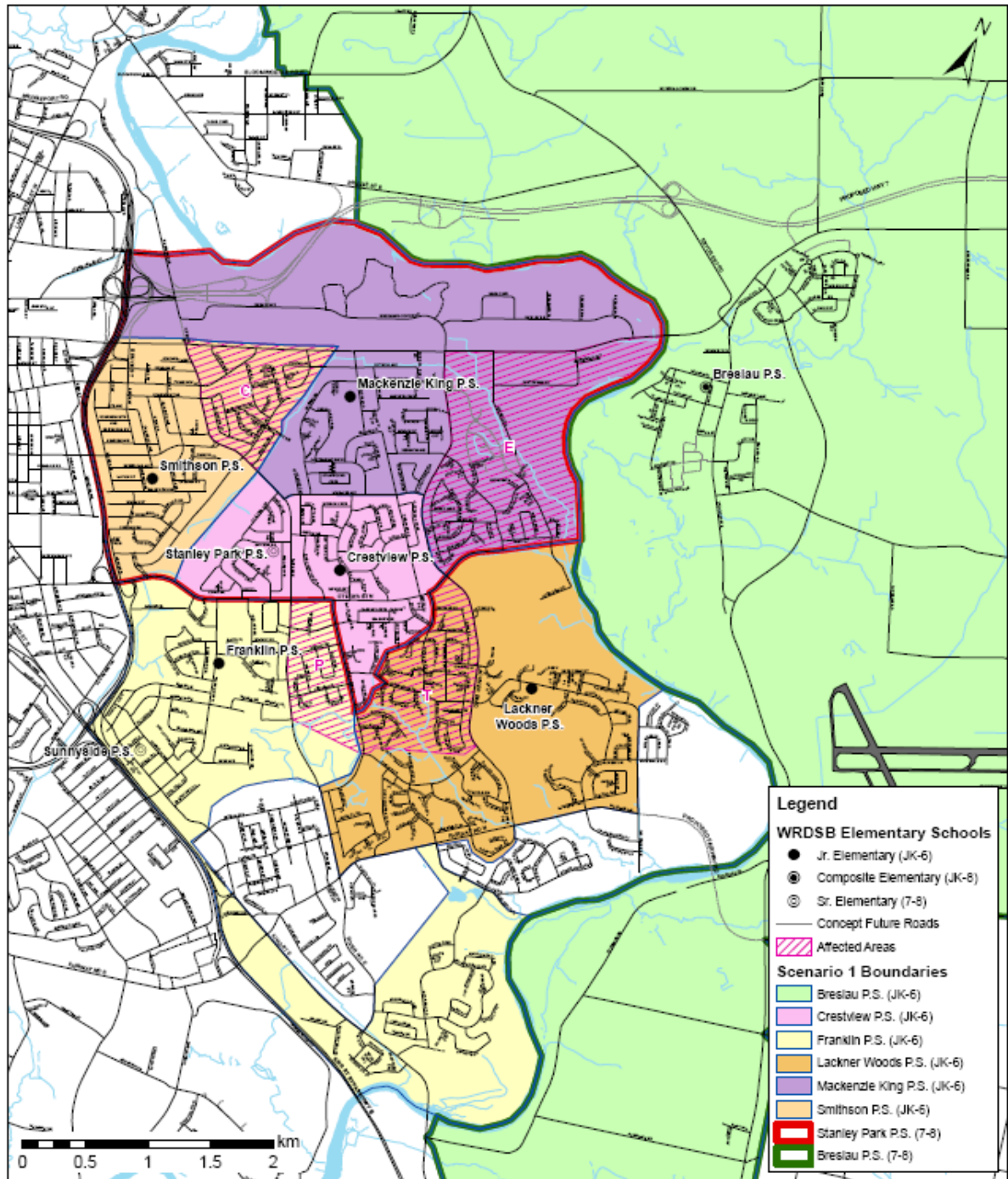
By comparison the energy consumption of schools constructed within the past 5 years can range from 130-157 KWh/m².

Scenario 1 Evaluation Based on Review Objectives

Objective	Meets	Doesn't Meet	Comments
Regard for Board Policy 3002	✓		<ul style="list-style-type: none"> Breslau P.S. senior numbers low initially Smithson P.S. small organization but larger than current enrolment
Review elementary school organization	✓		
Recognize distribution Spec Ed., F.I., ESL programs	✓		
Maximize students within walking distance		✓	<ul style="list-style-type: none"> No real net gain in students within walking distance
Maximize the number of students in permanent accommodation	✓		<ul style="list-style-type: none"> With proposed capital expenditures
Eliminate where practical underutilized space	✓		<ul style="list-style-type: none"> At Smithson P.S.
Identify facility requirements for new mandates	✓		
Improve retained facilities	✓		<ul style="list-style-type: none"> With proposed capital expenditures
Create more consistent feeds between senior elementary program and secondary programs		✓	<ul style="list-style-type: none"> Creates inconsistent senior elementary to secondary program feed for Areas P and T
Addresses future development and demographics	✓		<ul style="list-style-type: none"> All schools remain open, serving local communities
Minimizes number of student transitions	✓		<ul style="list-style-type: none"> Keeps neighbourhoods together Area E transitions from JK-8 model to JK-6 model. More transitions for Area E once implemented.

Breslau/Stanley Park Accommodation Review

Scenario 1



Appendix B: Scenario 2 Summary

Scenario 2 Programs and School Organizations

School	JK-6	JK-8	7-8	Partial French Immersion Classes	Congregated Spec. Ed. Classes
Breslau P.S.		•			
Crestview P.S.		•		•	
Franklin P.S.	•			•	•
Lackner Woods P.S.	•				
Mackenzie King P.S.		•			•
Smithson P.S.	•				•
Stanley Park P.S.	CLOSED				

Scenario 2 Enrolment Projections 2011-2021

School	Built Capacity*	Projected Total Enrolment By Year										
		2011	2012	2013	2014	2015	2016	2017	2018	2019	2020	2021
Breslau P.S.	443	503	556	602	456	426	461	475	479	469	441	414
Crestview P.S.	674	414	418	422	503	589	595	616	633	643	638	643
Franklin P.S.	582	565	568	534	548	559	551	532	542	536	535	542
Lackner Woods P.S.	368**	624	666	675	696	691	693	665	649	624	611	607
Mackenzie King P.S.	500	194	202	196	404	512	523	542	544	540	524	520
Smithson P.S.	299	204	206	216	251	259	255	254	242	241	244	247
Stanley Park P.S.	n/a	375	356	369	172	CLOSED						
Total	2866	2879	2972	3014	3030	3036	3078	3084	3089	3053	2993	2973

* anticipated capacity with proposed construction

**additional capacity anticipated with approval of the Grand River South/Sunnyside Accommodation Review Committee recommendations

Scenario 2 Estimated Capital Construction Costs

Location	Description	Estimated Cost
Breslau P.S.	118 pupil place addition (approx. 5 classrooms) Project includes: Full-Day Kindergarten (FDK) rooms, office relocation/expansion, accessibility and additional parking	\$2.45 M
Crestview P.S.	167 pupil place addition (approx. 7 classrooms) Project includes: Full-Day Kindergarten (FDK) rooms, library and office upgrades, accessibility and senior (gr. 7-8) rooms/infrastructure	\$3.45M
Mackenzie King P.S.	New 500 pupil place JK-8 school	\$9.24 M
Smithson P.S.	Site work and paving (parking lot improvements)	\$0.12 M
Stanley Park P.S.	Demolition (potentially required prior to sale of property)	\$0.05 M
TOTAL COST		\$15.31 M
REVENUE/SAVINGS	Proceeds from sale of Stanley Park P.S. property Major maintenance items not to be completed at original Mackenzie King P.S. facility and Stanley Park P.S. facility	(\$5.1 M)
NET TOTAL		\$10.21 M

- Estimates are preliminary based on a specific scope of work.
- Does not include any other major capital/maintenance projects required at remaining facilities (e.g. boiler replacement, HVAC, roof, windows, etc.)

Scenario 2 Operating Cost Considerations

Administrative Implications

School	Current Administration	Required Administration
Breslau P.S.	Principal, Vice Principal, Secretarial and Custodial staff	No change
Crestview P.S.	Principal, Vice Principal, Secretarial and Custodial staff	No change
Mackenzie King P.S.	Principal, Secretarial and Custodial staff	Principal, Vice Principal, Secretarial and Custodial staff
Smithson P.S.	Principal, Secretarial and Custodial staff	No change
Stanley Park P.S.	Principal, Vice-Principal, Secretarial and Custodial staff	None

Net savings of approximately \$250,000 annually (one less Principal, Secretary and Custodian)

Energy Consumption/Usage

School	Current KWh/m ² *	Potential Change
Breslau P.S.	333	Slight reduction (with addition)
Crestview P.S.	240	Slight reduction (with addition)
Mackenzie King P.S.	292	New construction est. 130 KWh/m ²
Smithson P.S.	215	No change
Stanley Park P.S.	284	Usage eliminated

*Based on 2008 usage

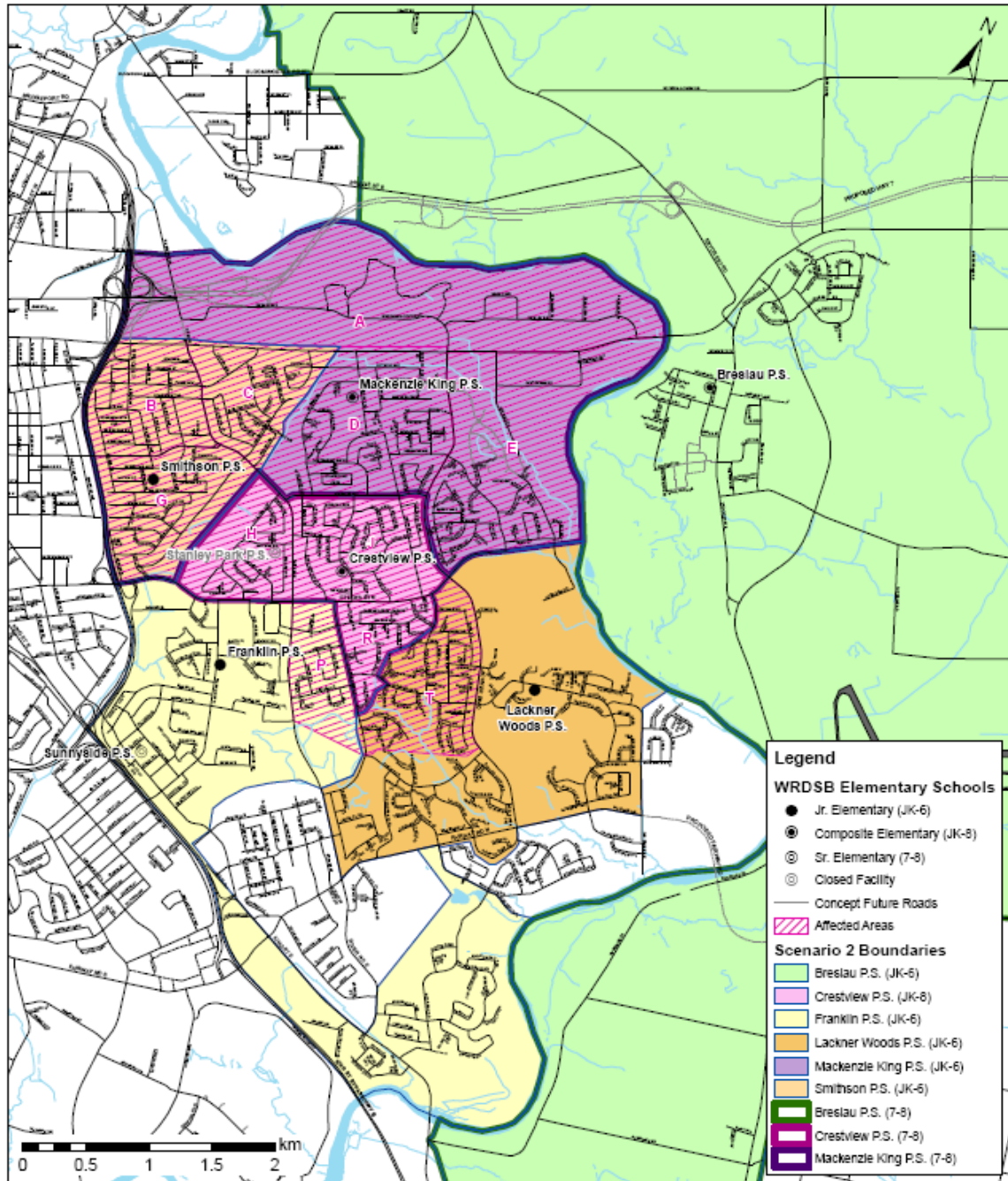
By comparison the energy consumption of schools constructed within the past 5 years can range from 130-157 KWh/m².

Scenario 2 Evaluation Based on Review Objectives






Objective	Meets	Doesn't Meet	Comments
Regard for Board Policy 3002	✓		<ul style="list-style-type: none"> Breslau P.S. senior numbers low initially Smithson P.S. small organization but larger than current enrolment Moving in JK-8 elementary organization direction
Review elementary school organization	✓		
Recognize distribution Spec Ed., F.I., ESL programs	✓		
Maximize students within walking distance	✓	✓	<ul style="list-style-type: none"> Slight improvement
Maximize the number of students in permanent accommodation	✓		<ul style="list-style-type: none"> With proposed capital expenditures
Eliminate where practical underutilized space	✓		<ul style="list-style-type: none"> At Smithson P.S.
Identify facility requirements for new mandates	✓		
Improve retained facilities	✓		<ul style="list-style-type: none"> With proposed capital expenditures
Create more consistent feeds between senior elementary program and secondary programs		✓	<ul style="list-style-type: none"> Creates inconsistent senior elementary to secondary program feed for Areas P and T
Addresses future development and demographics	✓		
Minimizes number of student transitions	✓		<ul style="list-style-type: none"> Keeps neighbourhoods together Area E transitions from JK-8 model to JK-8 model Transitions reduced at Mackenzie King P.S. and Crestview P.S. (JK-8). Still JK-6 to JK-8 transition for Smithson P.S. and Franklin P.S. French Immersion.

Breslau/Stanley Park Accommodation Review







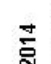
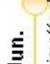




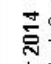

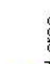





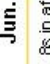

Scenario 2



Appendix C: Timing of Implementation (Scenario 1)

Breslau/Stanley Park Timeline of ARC's Scenario 1 Recommendations				
Scenario 1	2012/13	2013/14	2014/15	2015/16
<p>Recommendation #1 Breslau P.S. addition/renovations</p>	 Facility Improvements	 September 2013 Addition/renovations completed		
<p>Recommendation #2 Mackenzie King P.S. additions/renovations and boundary change</p>	 Design/tender	 Facility Improvements Sept. JK option to attend either Mackenzie King P.S. or Breslau P.S. (for affected area) Jun.	<p>September 2014 Construction completed. Mackenzie King P.S./Breslau P.S. boundary change</p> <p>Sept. Gr. 6 option to attend either Mackenzie King P.S. or Breslau P.S.</p> <p>Jun.</p>	<p>September 2015 All JK-6 students in affected area attend Mackenzie King P.S.</p>
<p>Recommendation #3 Smithson P.S. site work and boundary change</p>		 Site work Sept. JK option to attend either Smithson P.S. or Mackenzie King P.S. (for affected area) Jun.	<p>September 2014 Smithson P.S./Mackenzie King P.S. boundary change</p> <p>Sept. Gr. 6 option to attend either Mackenzie King P.S. or Smithson P.S. (for affected area)</p> <p>Jun.</p>	<p>September 2015 All JK-6 students in affected area attend Smithson P.S.</p>
<p>Recommendation #4 Stanley Park P.S. boundary change</p>			<p>September 2014 Breslau P.S./Stanley Park P.S. boundary change Grand River South/Sunnyside and Stanley Park P.S. boundary change</p> <p>Sept. Gr. 8s in affected areas do not change schools</p> <p>Jun.</p>	<p>September 2015 All 7/8 students in affected areas change schools (Breslau P.S. students attend Stanley Park P.S. and Franklin P.S./Lackner Woods P.S. students attend school determined by the Grand River South/Sunnyside Accommodation Review)</p>

Appendix D: Timing of Implementation (Scenario 2)

Breslau/Stanley Park Timeline of ARC's Scenario 2 Recommendations				
Scenario 2	2012/13	2013/14	2014/15	2015/16
Recommendation #1 Breslau P.S. addition/renovations	 Facility Improvements	 September 2013 Addition/renovations completed		
Recommendation #2 Stanley Park P.S. closure			<p>Sept.  School operates with Gr. 8 only</p> <p>July 2015  Facility officially closes</p>	
Recommendation #3 Mackenzie King P.S. rebuild and boundary change	 Design/Tender	 New facility construction	<p>September 2014  Construction completed, Gr. 7 classes start, Stanley Park P.S./Breslau P.S./Mackenzie King P.S. boundary change</p> <p>Sept.  No change for Gr. 8s in affected areas</p> <p>June.  No change for Gr. 8s in affected areas</p>	<p>September 2015  Gr. 8 classes start. All students in affected areas to attend Mackenzie King P.S.</p>
Recommendation #4 Crestview P.S. addition/renovations	 Design/Tender	 Facility Improvements	<p>September 2014  Construction completed, Gr. 7 classes start, Stanley Park P.S./Crestview P.S. boundary change</p> <p>Sept.  No change for Gr. 8s in affected area</p> <p>June.  No change for Gr. 8s in affected area</p>	<p>September 2015  Gr. 8 classes start. All Crestview P.S. students attend Crestview P.S. JK-8</p>
Recommendation #5 Smithson P.S. site work and boundary change	 Site work		<p>Sept.  JK option to attend either Smithson P.S. or Mackenzie King P.S. (for affected area)</p> <p>September 2014  Smithson P.S./Mackenzie King P.S. boundary change. All students in affected area attend Smithson P.S.</p>	
Recommendation #6 Grade 7/8 boundary for Lackner Woods P.S. and Franklin P.S. students			<p>September 2014  Grand River South/Sunnyside and Stanley Park P.S. boundary change</p> <p>Sept.  No change for Gr. 8s in affected area</p>	<p>September 2015  All 7/8 students in affected area change schools (as determined by the Grand River South/Sunnyside Accommodation Review)</p>