



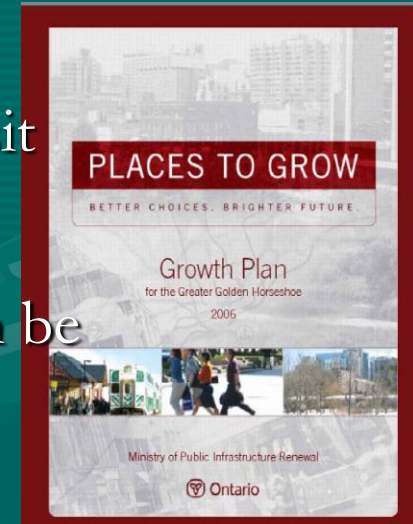
Cambridge West Accommodation Review November 15, 2011

Context: Provincial Policy

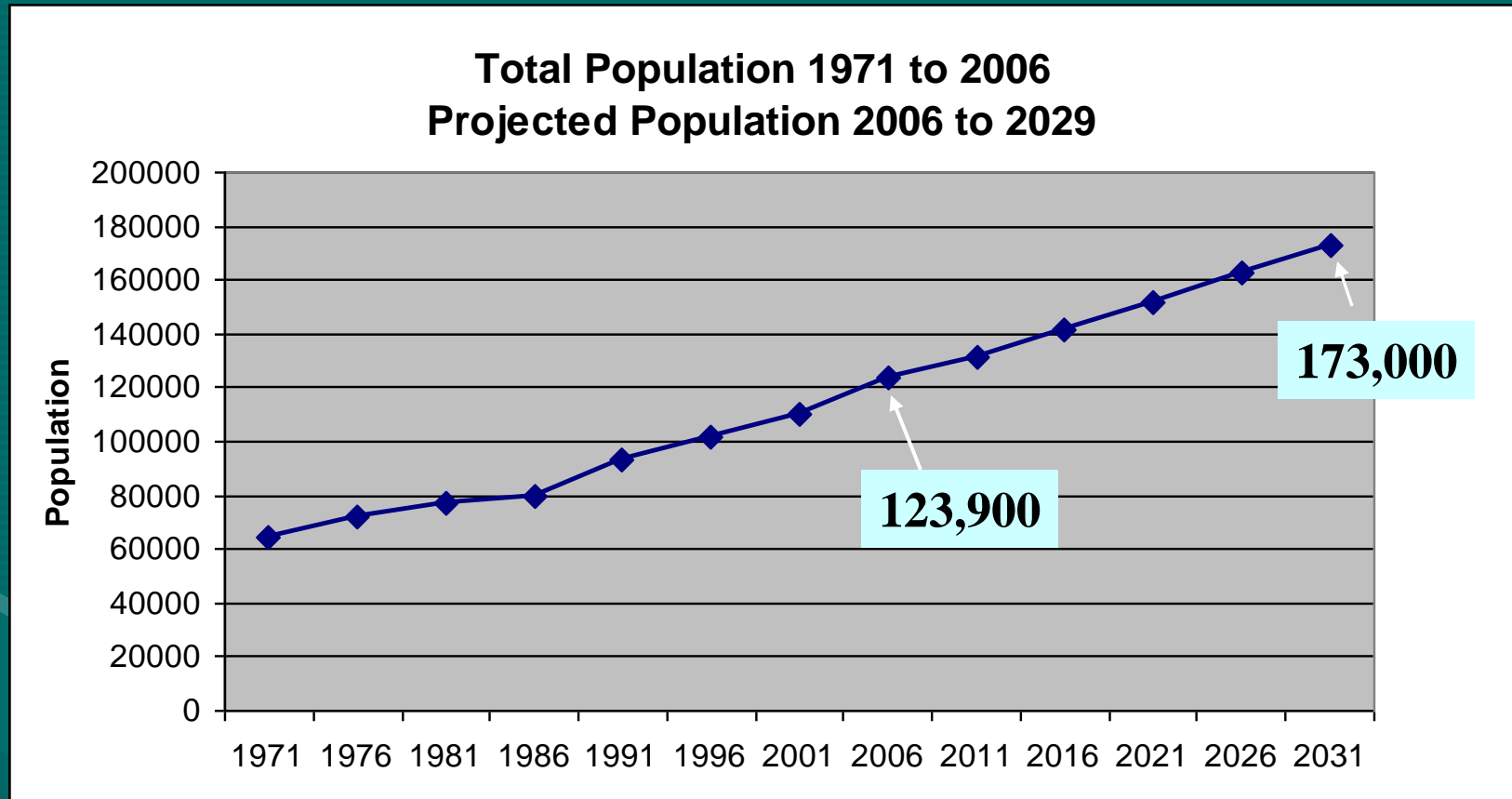


Places to Grow Growth Plan

- Supports creation of compact, mixed-use and transit supportive communities
- Requires that a significant portion of future growth be accommodated through intensification
- Delineates a Built Boundary
- Minimum density target of 50 people and jobs per hectare on lands outside the Built Boundary
- Requires 40% of growth to be within the Built Boundary by the year 2015 (intensification)



Projected Growth - Population



Increase of 49,100 from 2006-2029

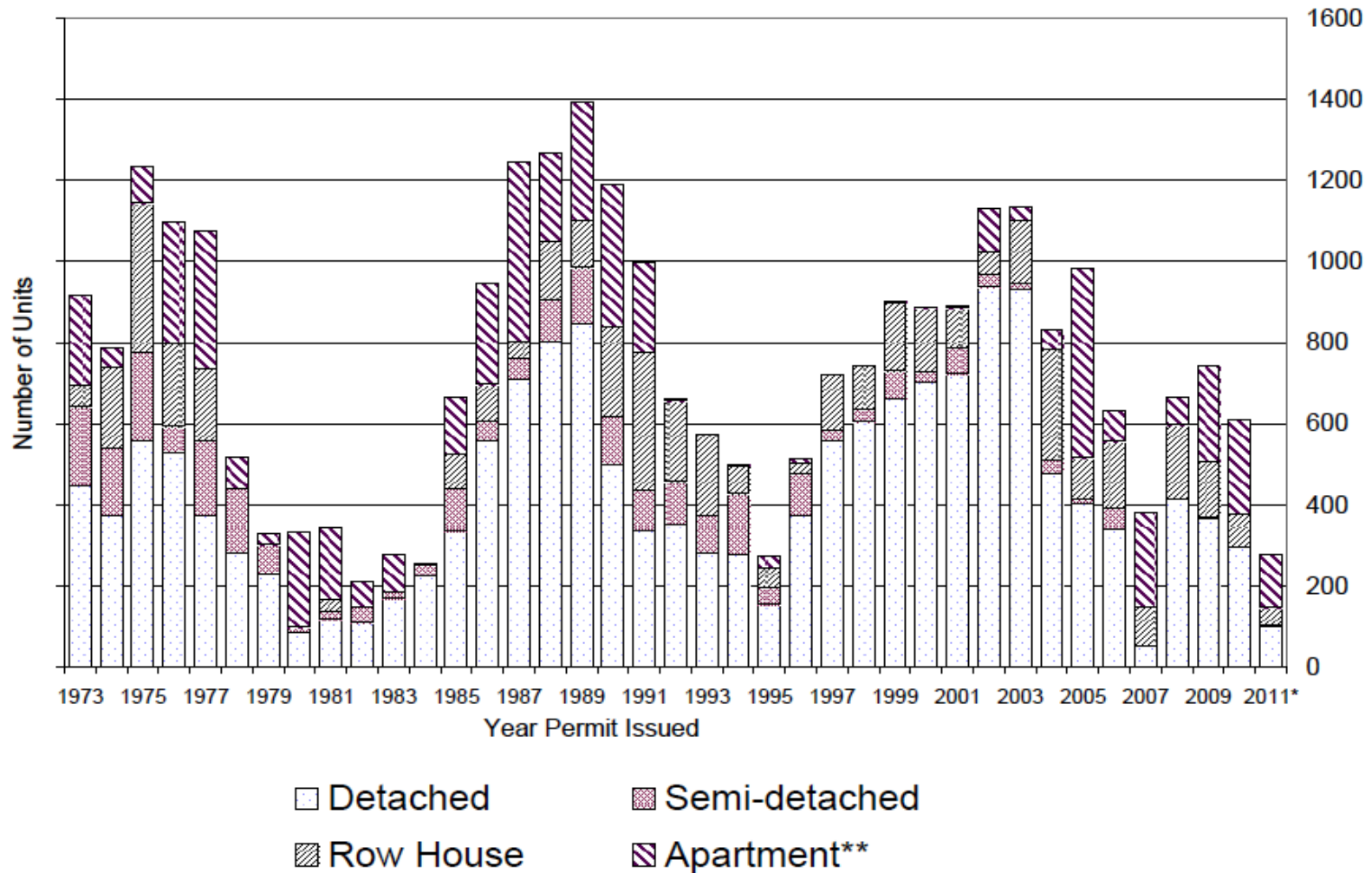
**Table 1: Number of Residential Units for which Building Permits were Issued
in the City of Cambridge**

RESIDENTIAL CONSTRUCTION ACTIVITY 1973 - 2010

Year	Detached Units	%	Semi-detached Units	%	Row House Units	%	Apartment Units*	%	Total Units	%
1973	447	48.7%	194	21.1%	55	6.0%	222	24.2%	918	100.0%
1974	373	47.3%	168	21.3%	199	25.2%	49	6.2%	789	100.0%
1975	559	45.3%	216	17.5%	369	29.9%	89	7.2%	1233	100.0%
1976	529	48.2%	64	5.8%	207	18.9%	298	27.1%	1098	100.0%
1977	374	34.8%	184	17.1%	179	16.6%	339	31.5%	1076	100.0%
1978	281	54.4%	160	30.9%	0	0.0%	76	14.7%	517	100.0%
1979	230	69.3%	72	21.7%	0	0.0%	30	9.0%	332	100.0%
1980	85	25.5%	14	4.2%	0	0.0%	234	70.3%	333	100.0%
1981	118	34.1%	18	5.2%	32	9.2%	178	51.4%	346	100.0%
1982	110	51.6%	40	18.8%	0	0.0%	63	29.6%	213	100.0%
1983	169	60.4%	17	6.1%	0	0.0%	94	33.6%	280	100.0%
1984	225	88.2%	28	11.0%	0	0.0%	2	0.8%	255	100.0%
1985	335	50.5%	104	15.7%	86	13.0%	139	20.9%	664	100.0%
1986	559	59.0%	48	5.1%	90	9.5%	251	26.5%	948	100.0%
1987	711	57.1%	50	4.0%	40	3.2%	445	35.7%	1246	100.0%
1988	803	63.4%	102	8.1%	146	11.5%	216	17.0%	1267	100.0%
1989	847	60.8%	138	9.9%	117	8.4%	290	20.8%	1392	100.0%
1990	500	42.0%	118	9.9%	220	18.5%	353	29.6%	1191	100.0%
1991	336	33.7%	100	10.0%	342	34.3%	219	22.0%	997	100.0%
1992	351	53.0%	106	16.0%	200	30.2%	5	0.8%	662	100.0%
1993	282	49.1%	92	16.0%	198	34.5%	2	0.3%	574	100.0%
1994	277	55.5%	150	30.1%	69	13.8%	3	0.6%	499	100.0%
1995	154	56.0%	42	15.3%	48	17.5%	31	11.3%	275	100.0%
1996	375	73.0%	102	19.8%	26	5.1%	11	2.1%	514	100.0%
1997	559	77.3%	26	3.6%	135	18.7%	3	0.4%	723	100.0%
1998	605	81.3%	32	4.3%	106	14.2%	1	0.1%	744	100.0%
1999	662	73.4%	68	7.5%	169	18.7%	3	0.3%	902	100.0%
2000	702	79.1%	26	2.9%	157	17.7%	3	0.3%	888	100.0%
2001	729	81.6%	64	7.2%	92	10.3%	8	0.9%	893	100.0%
2002	937	82.9%	32	2.8%	54	4.8%	107	9.5%	1130	100.0%
2003	931	82.0%	14	1.2%	156	13.7%	35	3.1%	1136	100.0%
2004	477	57.3%	34	4.1%	273	32.8%	48	5.8%	832	100.0%
2005	403	41.0%	12	1.2%	101	10.3%	467	47.5%	983	100.0%
2006	340	53.7%	52	8.2%	165	26.1%	76	12.0%	633	100.0%
2007	52	13.7%	0	0.0%	96	25.3%	232	61.1%	380	100.0%
2008	415	62.3%	0	0.0%	182	27.3%	69	10.4%	666	100.0%
2009	367	49.3%	2	0.3%	137	18.4%	238	32.0%	744	100.0%
2010	297	48.5%	0	0.0%	80	13.1%	235	38.4%	612	100.0%
2011*	101	36.5%	2	0.7%	43	15.5%	131	47.3%	277	100.0%
10 year average	495	61.8%	21	2.6%	134	16.7%	152	18.9%	801	100.0%
5 year average	294	48.5%	11	1.8%	132	21.7%	170	28.0%	607	100.0%
35 year average	434	58.1%	71	11.4%	119	13.5%	136	17.0%	760	100.0%

Note: Apartment figures include units created through the conversion of existing dwellings to create additional units as well as mixed residential uses (e.g. dwelling units above commercial uses). 2011 figures reflect units up to June 30th and are NOT included in averages.

New Residential Construction Activity by Unit Type City of Cambridge 1973 - 2011*



*2011 data reflects units on Residential Building Permits up to June 30th.

** Apartment figures include units created through mixed residential-commercial uses (e.g. dwelling units above stores).

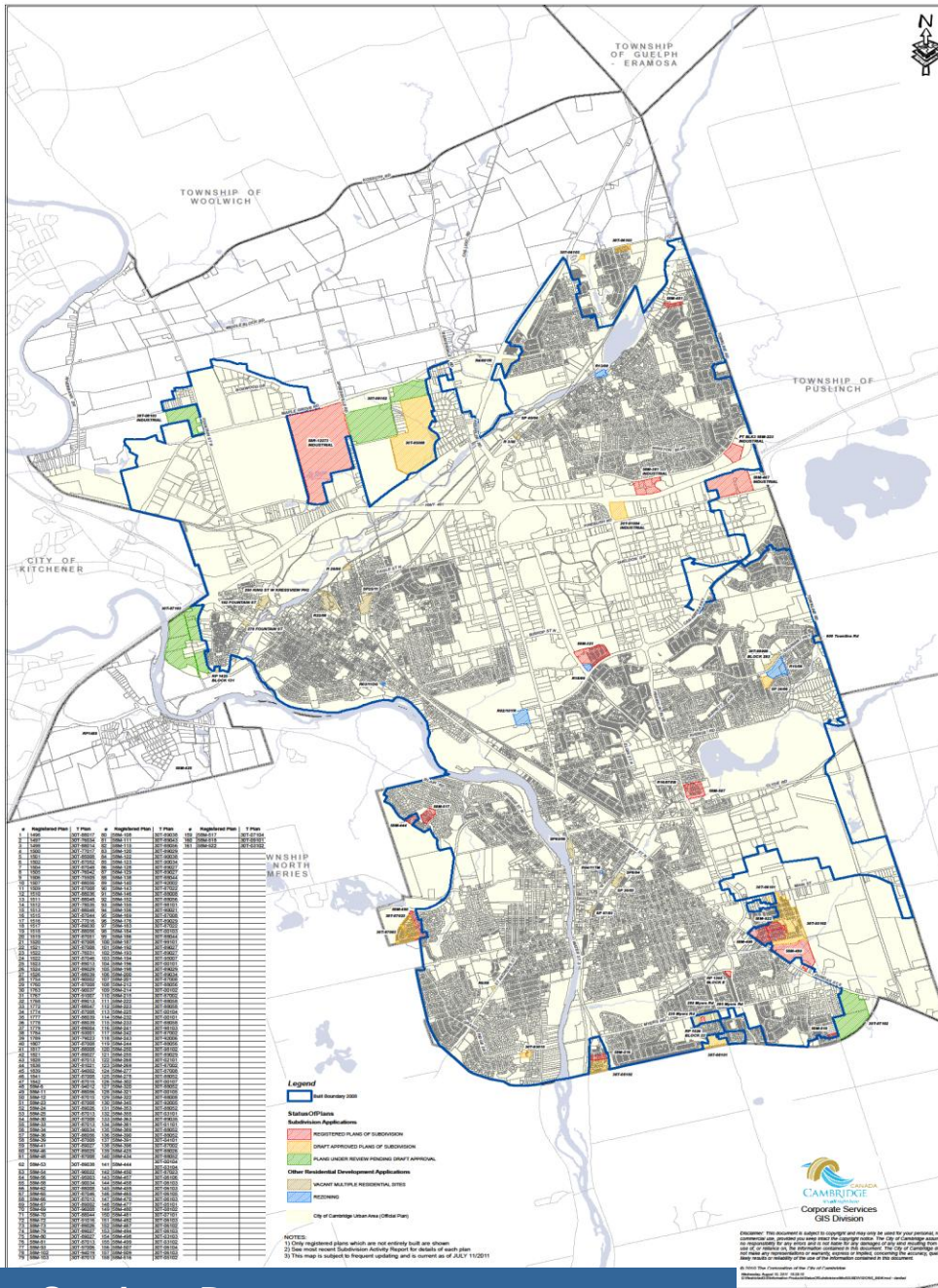
Housing Today

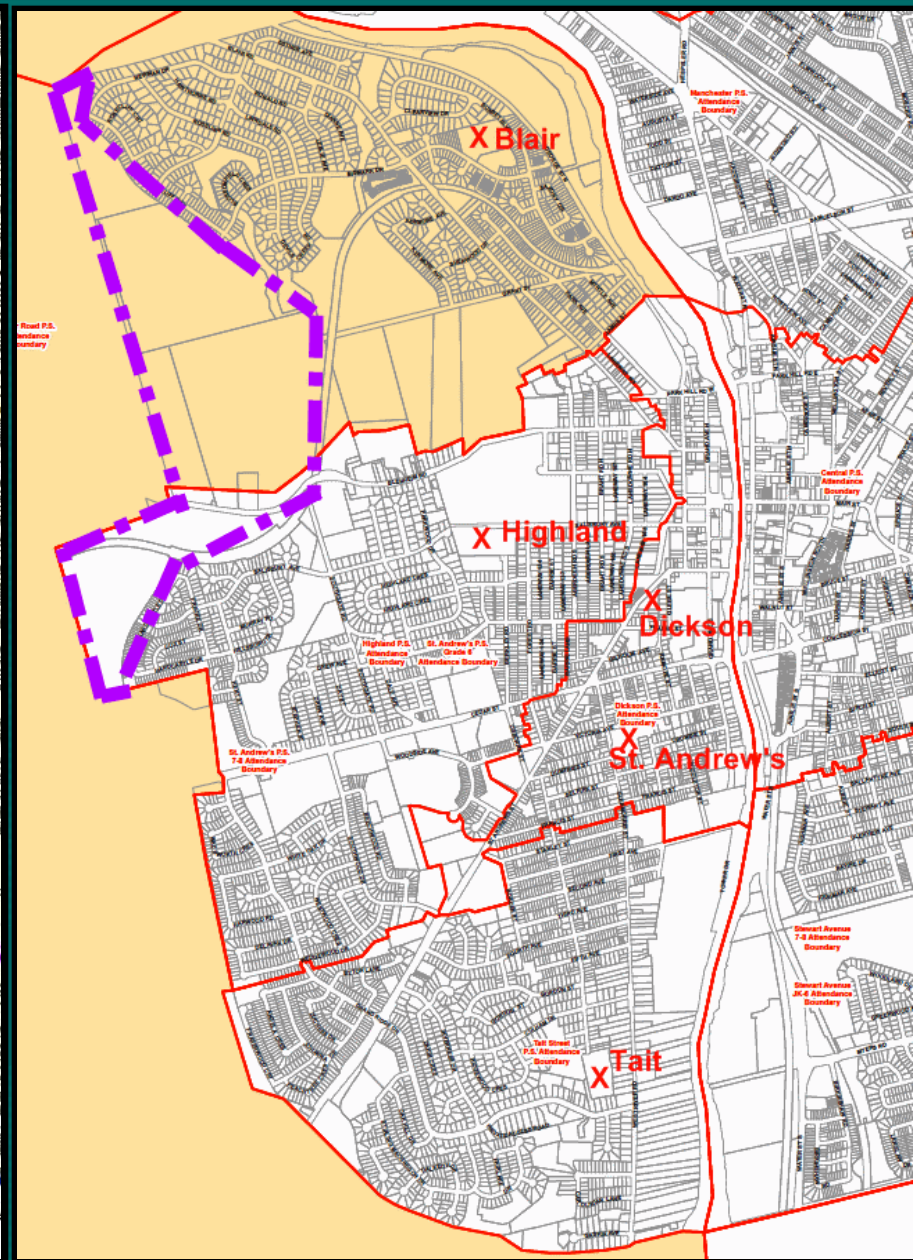
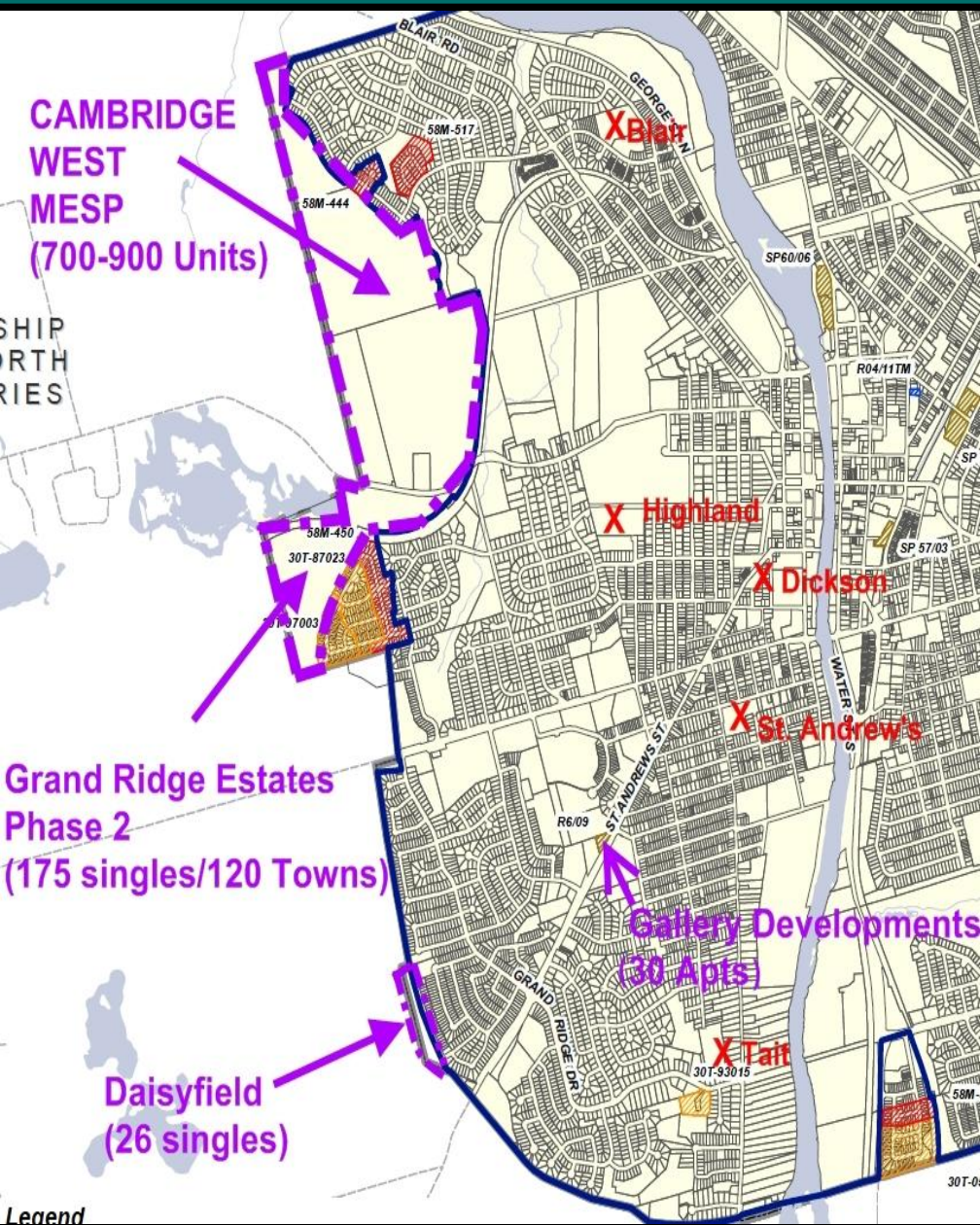
Percentage of Housing Units by Type

UNIT TYPE	1981	1991	2001	2010
Single/Semi Detached	66%	67%	69%	49%
Row House	8%	7%	10%	13%
Apartment	26%	25%	21%	38%



STATUS OF PLANS OF SUBDIVISIONS





Questions ? Thank you