

Preferred Scenario (Scenario 2)

DESCRIPTION

- Breslau P.S. addition/renovations
- Stanley Park P.S. closes
- Mackenzie King P.S. rebuilt on site as a JK-8 facility; receives 7/8 Spec. Ed. programs from Stanley Park P.S., 7-8 boundary includes Smithson P.S.
- Crestview receives an addition to become a JK-8 facility, receives Sr. F.I. program from Stanley Park P.S., JK-6 boundary becomes JK-8 boundary
- Breslau P.S./Mackenzie King P.S. boundary change
- Smithson P.S./Mackenzie King P.S. boundary change
- Grade 7/8 boundary change for Lackner Woods P.S. and Franklin P.S. students

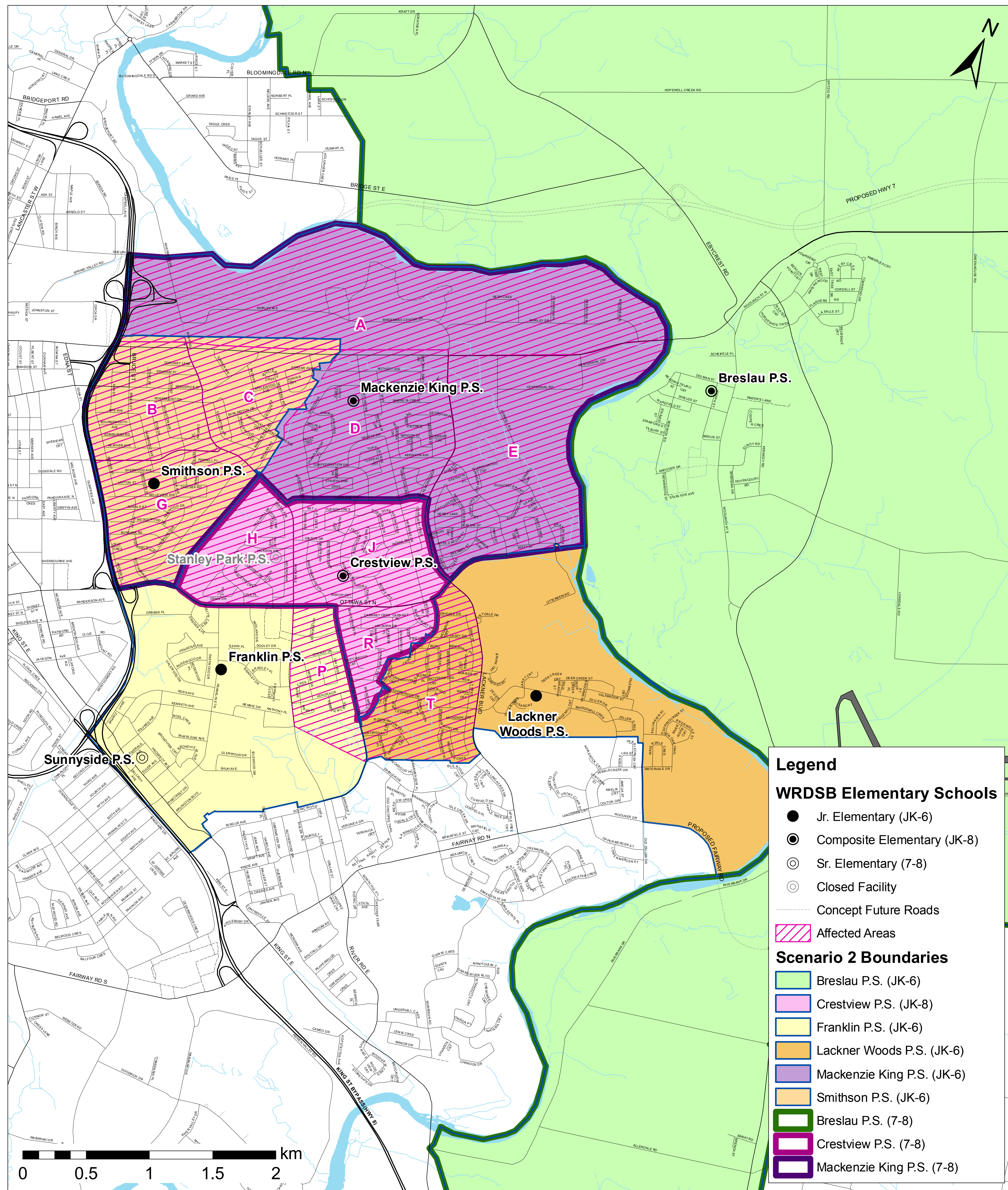
ENROLMENT PROJECTIONS

Facility	Program	Projected Total Enrolment											
		2014			2018			2021					
School	Capacity	Grades	FI	SpecEd	JK-6	7-8	Total	JK-6	7-8	Total	JK-6	7-8	Total
Breslau P.S.	443	JK-8			358	98	456	363	116	479	301	113	414
Crestview P.S.	674	JK-8	•		420	83	503	467	166	633	480	163	643
Franklin P.S.	582	JK-6	•	•	548		548	542		542	542		542
Lackner Woods P.S.*	368	JK-6			696		696*	649		649*	607		607*
Mackenzie King P.S.	500	JK-8		•	309	95	404	357	187	544	340	180	520
Smithson P.S.	299	JK-6		•	251		251	242		242	247		247
Stanley Park P.S.						172	172	CLOSED					
TOTAL	2866		2	3	2582	448	3036	2620	469	3089	2517	456	2973

Notes:
 Capacity = Ministry of Education assigned loading of students in permanent space in a facility (includes anticipated capacity with proposed construction)
 A factor has been applied to each school's enrolment to account for out of boundary student gains and losses due to magnet programs such as French Immersion (FI) and Special Education Area Classes (SpecEd)
 Enrolment projections are approximations calculated based on the most current information available
 * Enrolment pressures at Lackner Woods to be addressed by the Grand River South/Sunnyside Accommodation Review

TIMING OF IMPLEMENTATION

Scenario 2	2012/13	2013/14	2014/15	2015/16
Preferred Recommendation #1 Breslau P.S. addition/renovations	Facility Improvements	September 2013 Addition/renovations completed		
Preferred Recommendation #2 Stanley Park P.S. closure			Sept. - Jun. 2015 School operates with Gr. 8 only July 2015 Facility officially closes	
Preferred Recommendation #3 Mackenzie King P.S. rebuild and boundary change	Design/Tender	New facility construction	Sept. 2014 - Jun. 2015 Construction completed, Gr. 7 classes start, Stanley Park P.S./Breslau P.S./Mackenzie King P.S. boundary change No change for Gr. 8s in affected areas	September 2015 Gr. 8 classes start. All students in affected areas attend Mackenzie King P.S.
Preferred Recommendation #4 Crestview P.S. addition/renovations	Design/Tender	Facility Improvements	Sept. 2014 - Jun. 2015 Construction completed, Gr. 7 classes start, Stanley Park P.S./Crestview P.S. boundary change No change for Gr. 8s in affected area	September 2015 Gr. 8 classes start. All Crestview P.S. students attend Crestview P.S. JK-8
Preferred Recommendation #5 Smithson P.S. site work and boundary change	Site work	Sept. - Jun. 2014 JK option to attend either Smithson P.S. or Mackenzie King P.S. (for affected area)	September 2014 Smithson P.S./Mackenzie King P.S. boundary change. All students in affected area attend Smithson P.S.	
Preferred Recommendation #6 Grade 7/8 boundary for Lackner Woods P.S. and Franklin P.S. students			September 2014 - Jun. 2015 Grand River South/Sunnyside and Stanley Park P.S. boundary change No change for Gr. 8s in affected area	September 2015 All 7/8 students in affected area change schools (as determined by the Grand River South/Sunnyside Accommodation Review)



Preferred Recommendation #1: Breslau P.S. Addition/Renovations

The Breslau/Stanley Park ARC recommends to the WRDSB that:

An addition consisting of 118 pupil places, or approximately 5 classrooms, be constructed at Breslau Public School, to be completed for September 2013; and that

The project includes renovation items such as relocating/expanding the office/administration area, accessibility and additional parking.

Projected enrolment at Breslau P.S. with boundary change

Year	2014	2015	2016	2017	2018	2019	2020	2021
JK-6 Enrolment	358	345	362	366	363	347	321	301
7-8 Enrolment	98	81	99	109	116	122	120	113
Total Enrolment	456	426	461	475	479	469	441	414

Preferred Recommendation #2: Stanley Park P.S. Closure

The Breslau/Stanley Park ARC recommends to the WRDSB that:

Stanley Park Public School be closed and the senior elementary program be incorporated into Mackenzie King P.S. and Crestview P.S., effective August 2015; and that

For the 2014/15 school year, Stanley Park P.S. operates Grade 8 classes only.

Preferred Recommendation #3: Mackenzie King P.S. Rebuild and Boundary

The Breslau/Stanley Park ARC recommends to the WRDSB that:

A new Mackenzie King Public School facility, of approximately 500 pupil places, be constructed on its existing site, as a Junior Kindergarten to Grade 8 school, to open for September 2014 as a JK-7 and September 2015 as a JK-8 school; and that

The Junior Kindergarten to Grade 6 boundary for the new Mackenzie King P.S. include a portion of the Breslau P.S. boundary, as illustrated in Figure 2, effective September 2014; and that

The senior elementary boundary for the new Mackenzie King P.S. include the Smithson P.S. boundary, and portions of the Breslau P.S. boundary, as illustrated in Figure 3, effective September 2014 for Grade 7 and September 2015 for Grade 7 and Grade 8.

Projected enrolment at Mackenzie King P.S. with boundary change

Year	2014	2015	2016	2017	2018	2019	2020	2021
JK-6 Enrolment	309	338	362	369	357	362	349	340
7-8 Enrolment	95	174	161	173	187	178	175	180
Total Enrolment	404	512	523	542	544	540	524	520

Figure 2: JK-6 Boundary Recommendation for Mackenzie King P.S.

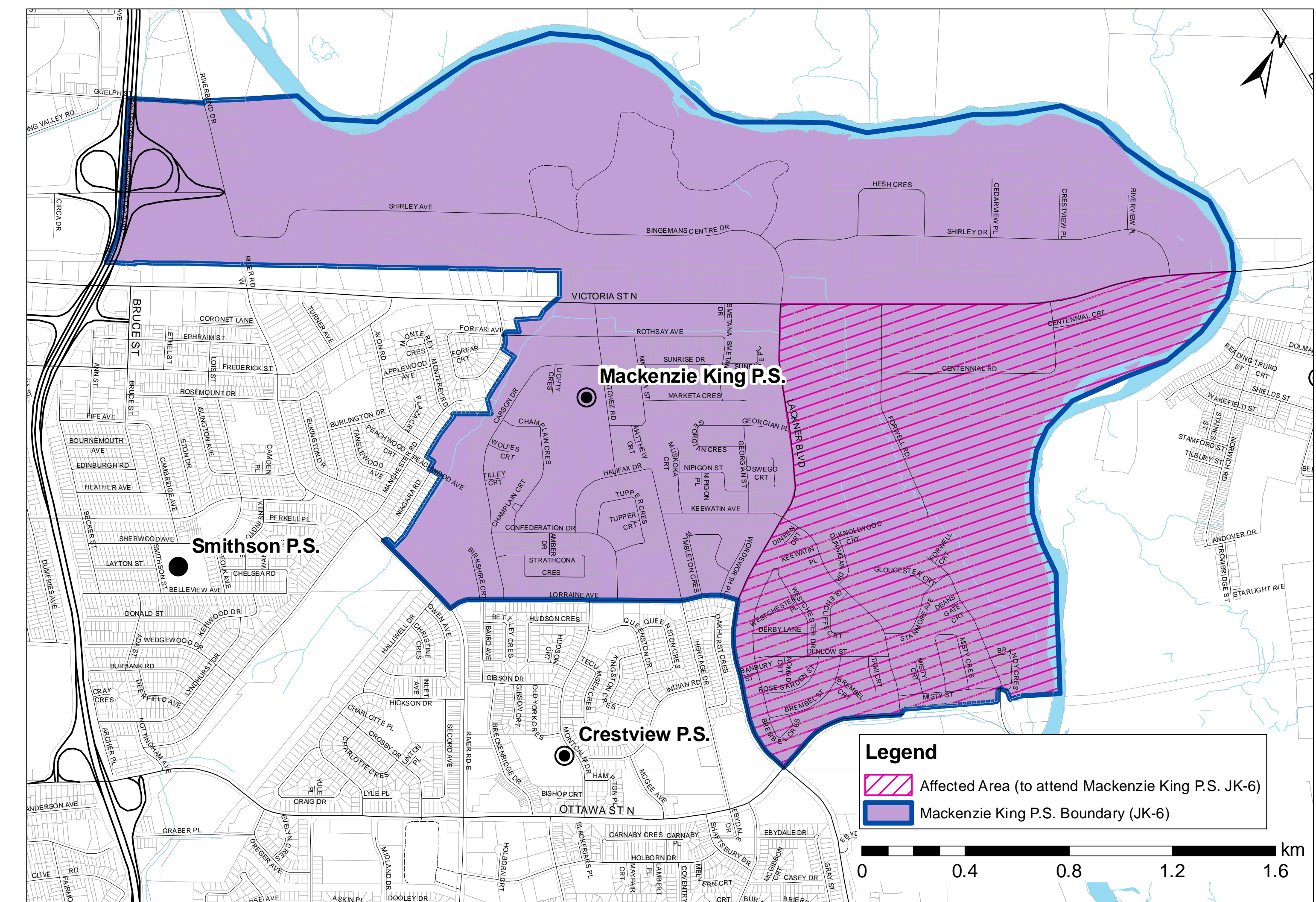
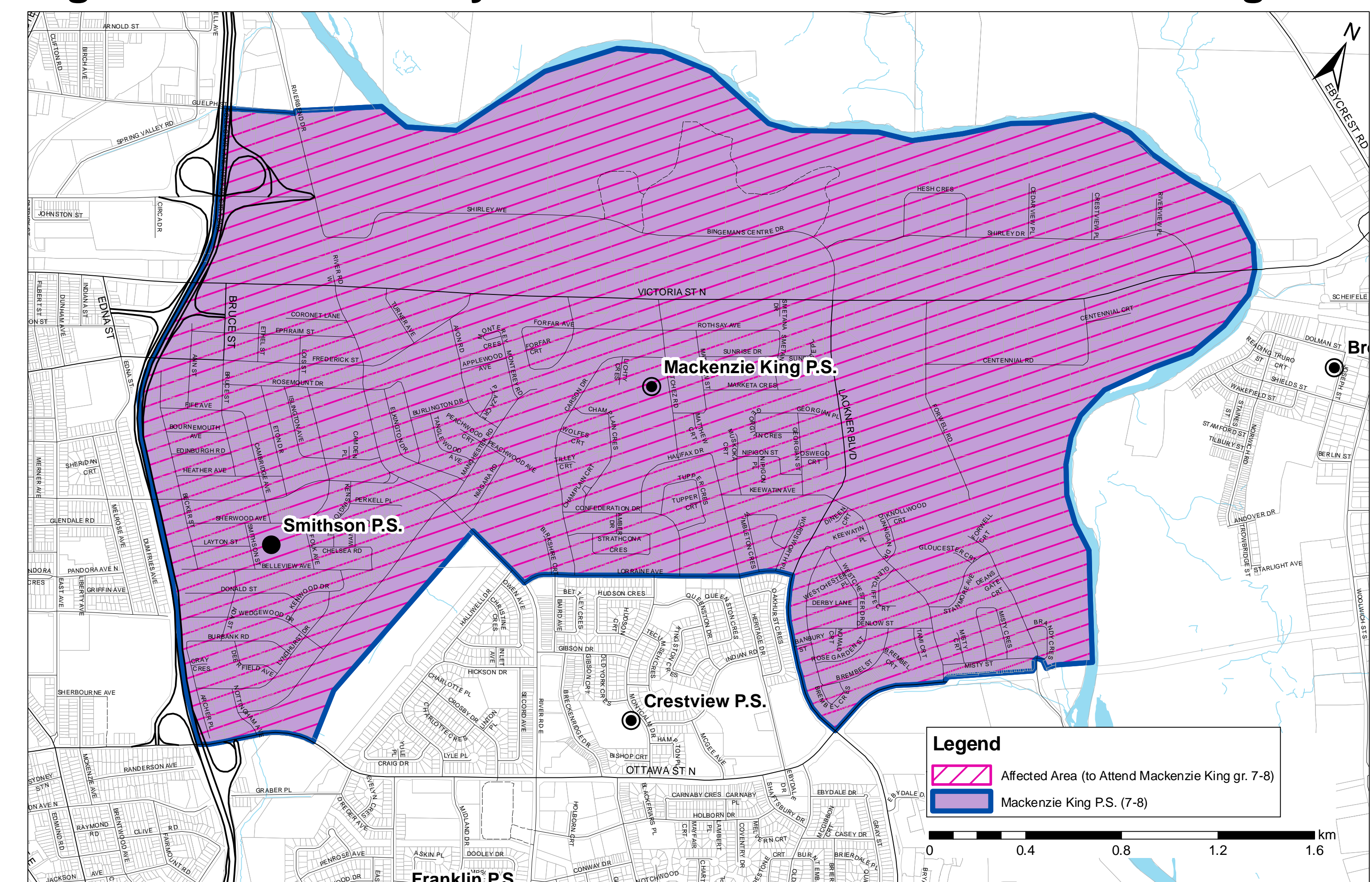


Figure 3: 7-8 Boundary Recommendation for Mackenzie King P.S.



Preferred Recommendation #4: Crestview P.S. Addition/Renovation and Boundary

The Breslau/Stanley Park ARC recommends to the WRDSB that:

An addition consisting of 167 pupil places, or approximately 7 classrooms, be constructed at Crestview Public School, to be completed for September 2014; and that

The project include, senior elementary school rooms/infrastructure, modifications to the office/administration area and library, and accessibility; and that

The senior elementary boundary for Crestview P.S. match the existing JK-6 boundary, as illustrated on Figure 4, effective September 2014 for Grade 7 and September 2015 for Grade 7 and Grade 8; and that

The senior Partial French Immersion program located at Stanley Park P.S. be relocated to Crestview P.S., effective September 2014 for Grade 7 and September 2015 for Grade 7 and Grade 8.

Preferred Recommendation #5: Smithson P.S. Site Work and Boundary Change

The Breslau/Stanley Park ARC recommends to the WRDSB that:

Approximately \$120,000 be allocated to Smithson P.S. to complete site work which includes improvements to the parking lot, prior to September 2014; and that

The Smithson P.S. boundary be modified to include a portion of the Mackenzie King P.S. boundary, as illustrated on Figure 5, effective September 2014; and that Students entering Junior Kindergarten (JK) in September 2013 in the affected area be given the option to enrol at either Smithson P.S. or Mackenzie King P.S. during the 2013/14 school year; and that

Transportation be extended to those JK students choosing to attend Smithson P.S. for the 2013/14 school year based on transportation eligibility.

Projected enrolment at Crestview P.S. with boundary change

Year	2014	2015	2016	2017	2018	2019	2020	2021
JK-6 Enrolment	420	437	459	471	467	471	474	480
7-8 Enrolment	83	152	136	145	166	172	164	163
Total Enrolment	503	589	595	616	633	643	638	643

Projected enrolment at Smithson P.S. with boundary change

Year	2014	2015	2016	2017	2018	2019	2020	2021
Total Enrolment	251	259	255	254	242	241	244	247

Figure 4: 7-8 Boundary Recommendation for Crestview P.S.

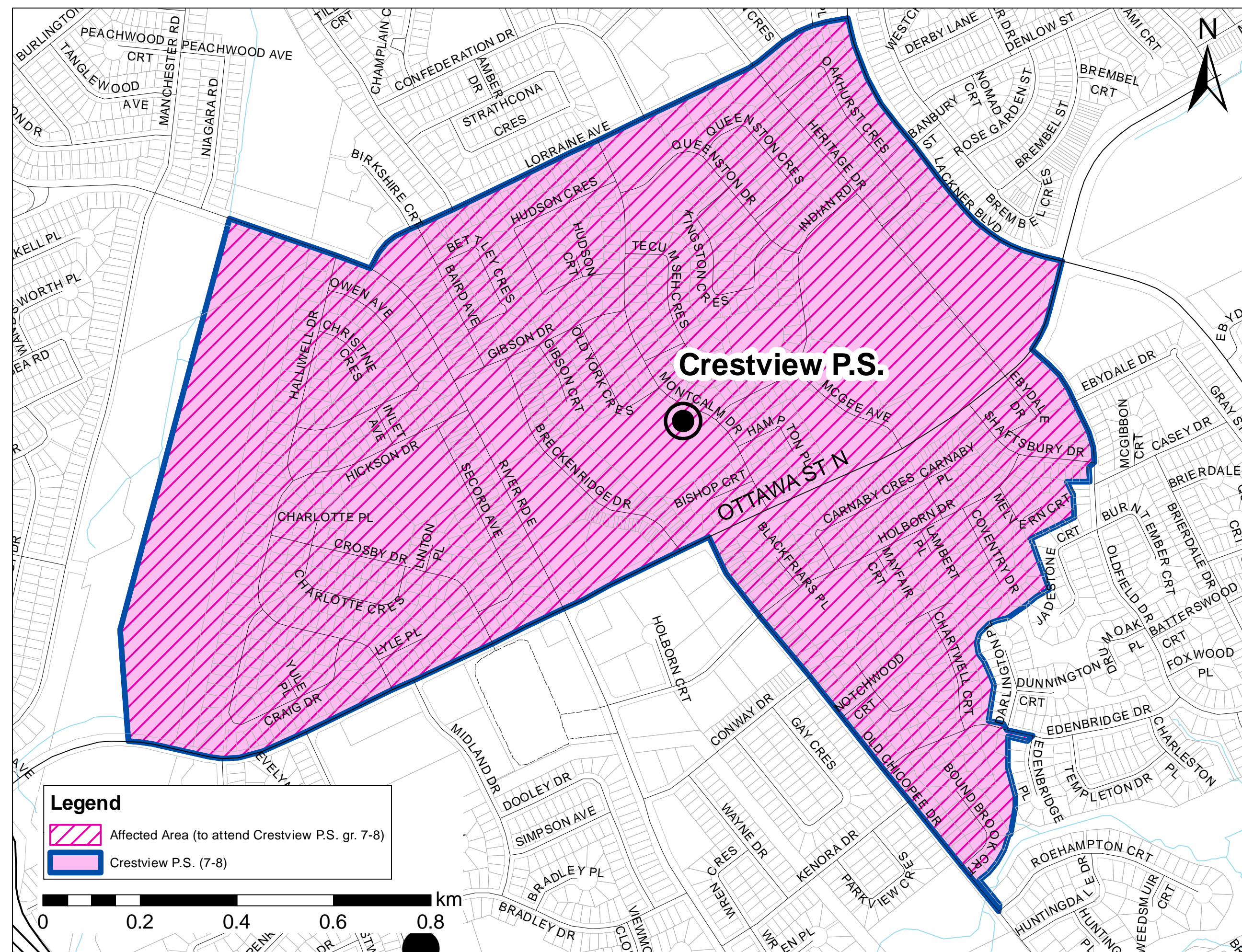
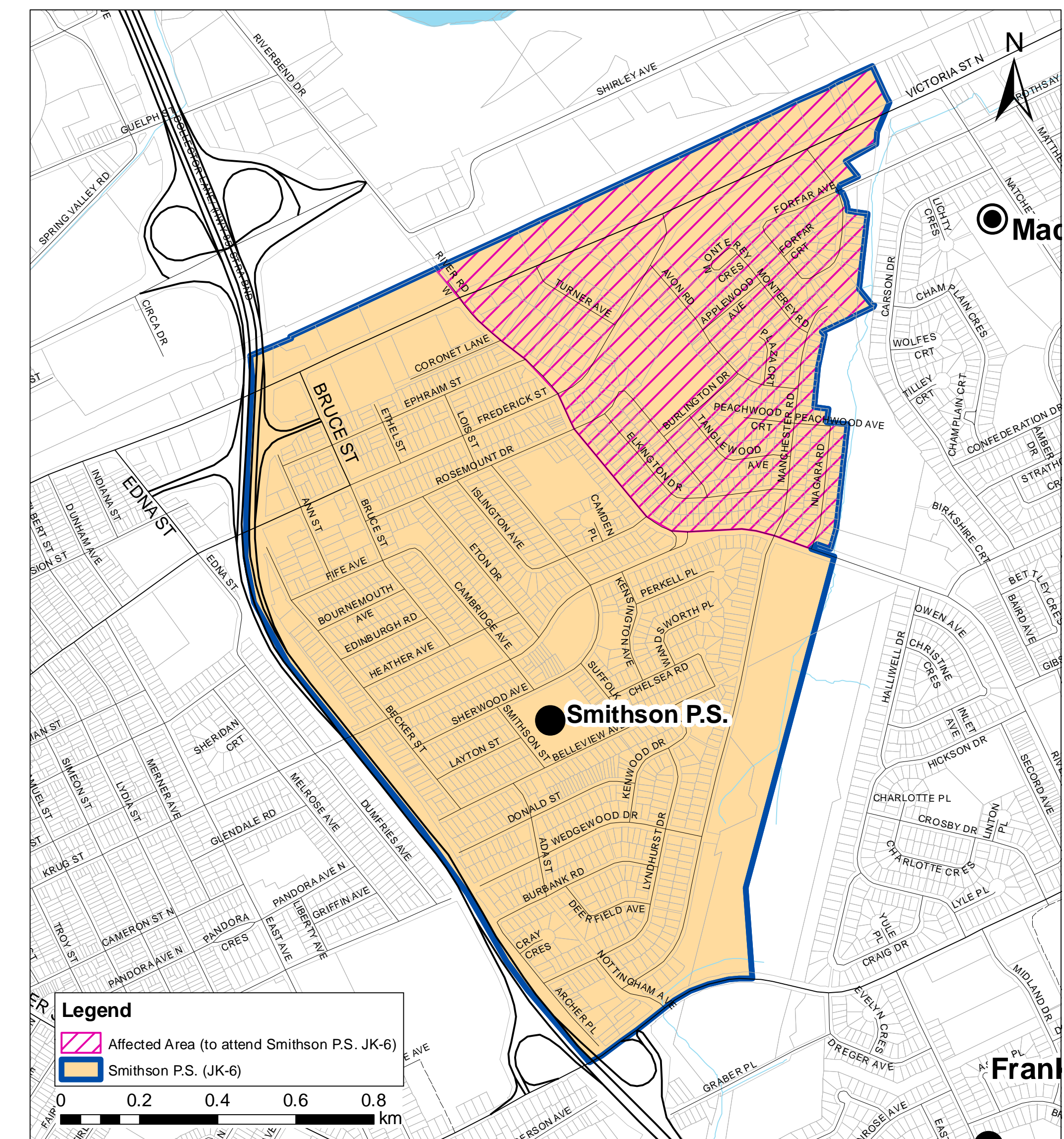


Figure 5: Boundary Recommendation for Smithson P.S.

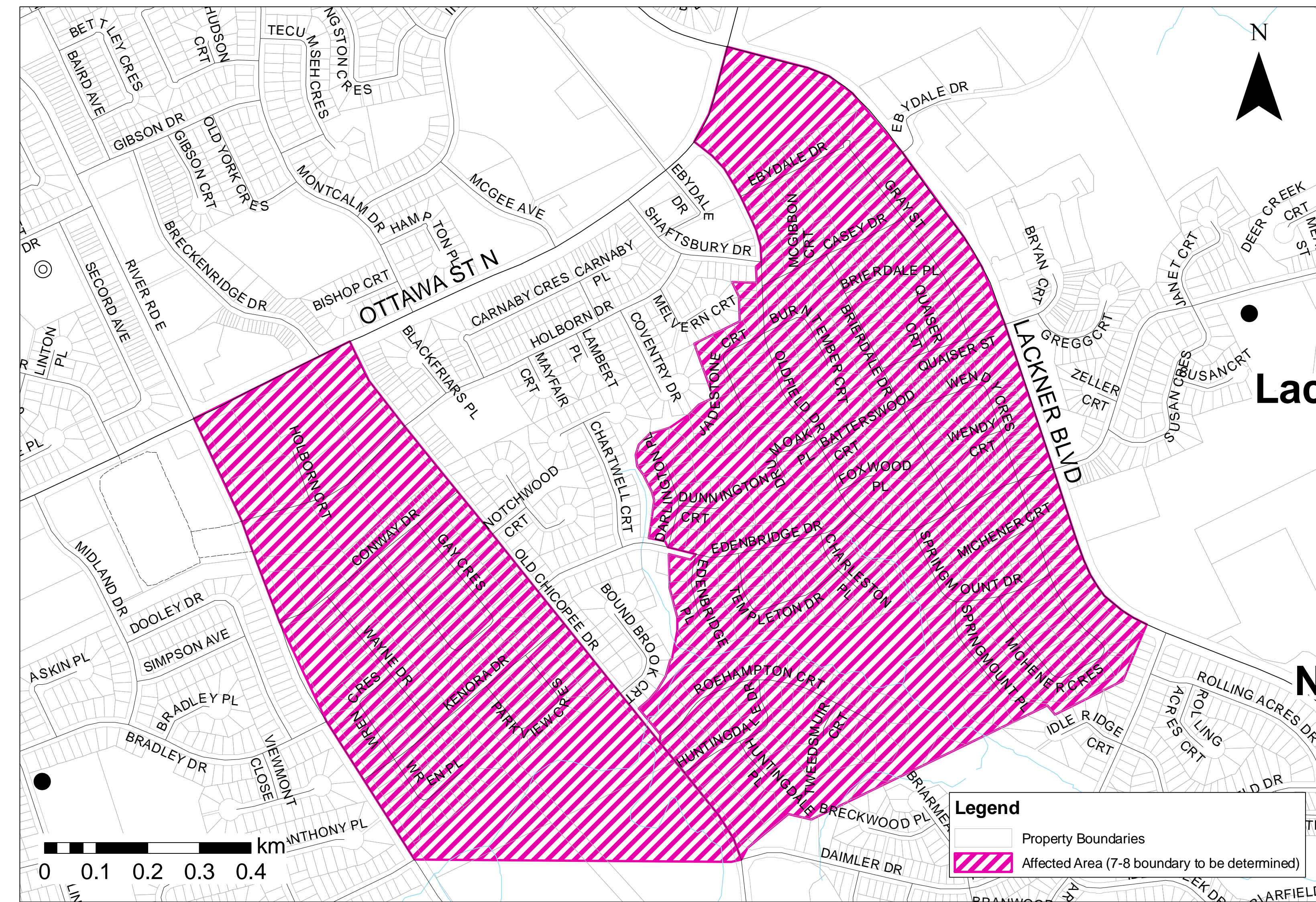


Preferred Recommendation #6: Grade 7/8 Boundary for Lackner Woods P.S. and Franklin P.S. students

The Breslau/Stanley Park ARC recommends to the WRDSB that:

The senior elementary boundary for students in the Lackner Woods P.S. and Franklin P.S. boundaries, as illustrated on Figure 6, be adjusted as recommended by the Grand River South/Sunnyside Elementary Schools Pupil Accommodation Review, effective September 2014 for Grade 7 and September 2015 for Grade 7 and 8.

Figure 6: Grade 7-8 Affected Area (Franklin P.S. and Lackner Woods P.S. students)



Preferred Recommendation #7: Be Mindful of Transitions

The Breslau/Stanley Park ARC recommends to the WRDSB that:

Every effort be made to smooth the transition for students, families and staff at the schools that are seeing significant change, be it new students, fewer students, new programs or facility changes.

Timing of Implementation

Scenario 2	2012/13	2013/14	2014/15	2015/16
Preferred Recommendation #1 Breslau P.S. addition/renovations	Facility Improvements	September 2013 Addition/renovations completed		
Preferred Recommendation #2 Stanley Park P.S. closure			Sept. - Jun. School operates with Gr. 8 only July 2015 Facility officially closes	
Preferred Recommendation #3 Mackenzie King P.S. rebuild and boundary change	 Design/Tender	New facility construction	September 2014 Construction completed, Gr. 7 classes start, Stanley Park P.S./Breslau P.S./Mackenzie King P.S. boundary change Sept. - Jun. No change for Gr. 8s in affected areas	September 2015 Gr. 8 classes start. All students in affected areas to attend Mackenzie King P.S.
Preferred Recommendation #4 Crestview P.S. addition/renovations	 Design/Tender	Facility Improvements	September 2014 Construction completed, Gr. 7 classes start, Stanley Park P.S./Crestview P.S. boundary change Sept. - Jun. No change for Gr. 8s in affected area	September 2015 Gr. 8 classes start. All Crestview P.S. students attend Crestview P.S. JK-8
Preferred Recommendation #5 Smithson P.S. site work and boundary change	Site work	Sept. - Jun. JK option to attend either Smithson P.S. or Mackenzie King P.S. (for affected area)	September 2014 Smithson P.S./Mackenzie King P.S. boundary change. All students in affected area attend Smithson P.S.	
Preferred Recommendation #6 Grade 7/8 boundary for Lackner Woods P.S. and Franklin P.S. students			September 2014 Grand River South/Sunnyside and Stanley Park P.S. boundary change Sept. - Jun. No change for Gr. 8s in affected area	September 2015 All 7/8 students in affected area change schools (as determined by the Grand River South/Sunnyside Accommodation Review)