

# Alternate Scenario (Scenario 1)

## DESCRIPTION

- Breslau P.S. addition/renovations
- Mackenzie King P.S. addition/renovations
- Breslau P.S./Mackenzie King P.S. boundary change
- Smithson P.S./Mackenzie King P.S. boundary change
- Stanley Park P.S. boundary change

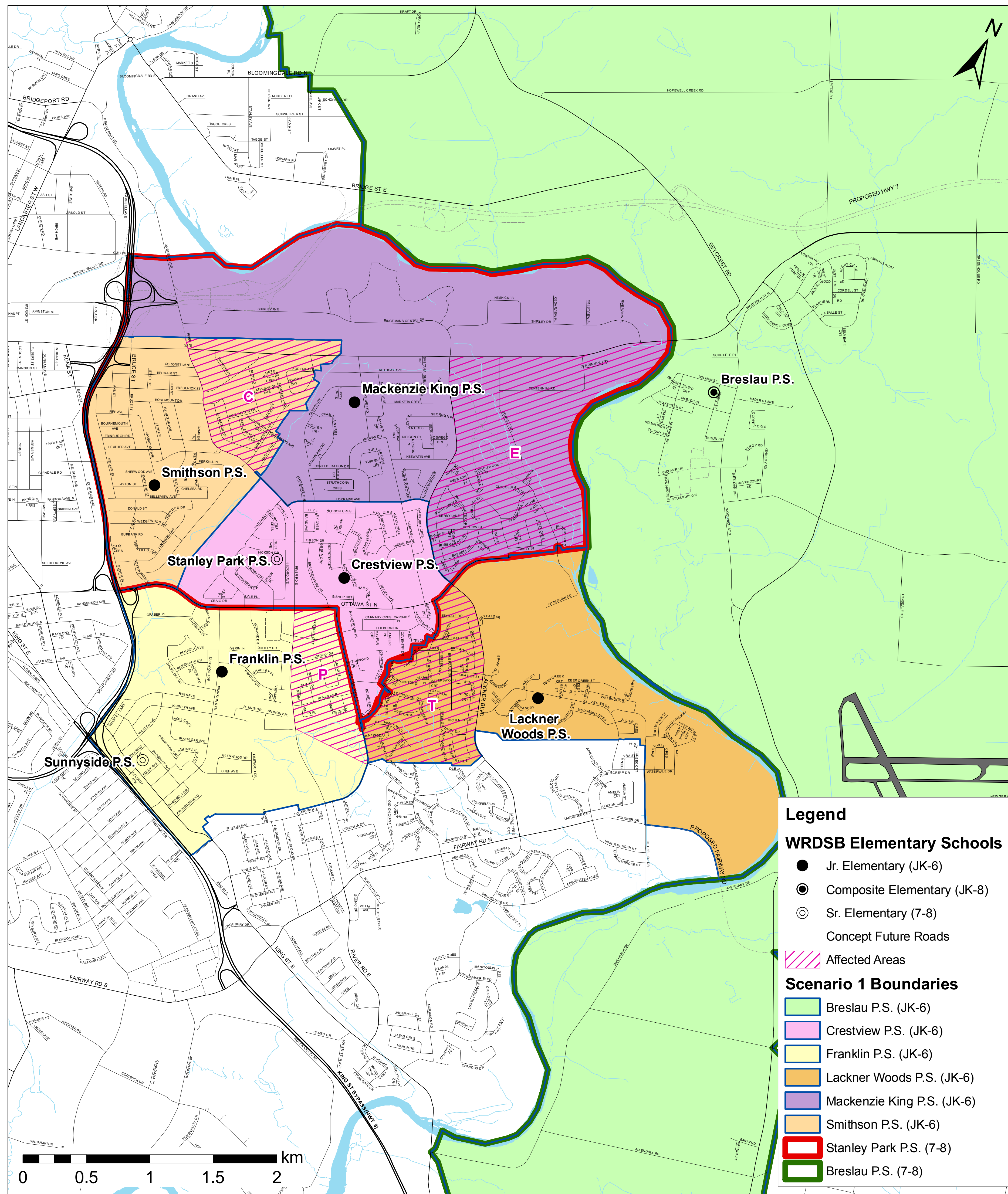
## ENROLMENT PROJECTIONS

Facility	Program	Projected Total Enrolment											
		2014			2018			2021					
School	OTG Capacity	Grades	FI	SpecEd	JK-6	7-8	Total	JK-6	7-8	Total	JK-6	7-8	Total
Breslau P.S.	443	JK-8			380	98	478	363	116	479	301	113	414
Crestview P.S.	507	JK-6	•		420		420	467		467	480		480
Franklin P.S.	582	JK-6	•	•	548		548	542		542	542		542
Lackner Woods P.S.*	368	JK-6			696		696*	649		649*	607		607*
Mackenzie King P.S.	360	JK-6		•	295		295	357		357	340		340
Smithson P.S.	299	JK-6		•	243		243	242		242	247		247
Stanley Park P.S.	441	7-8	•	•		350	350		353	353		343	343
<b>TOTAL</b>	<b>3000</b>		<b>3</b>	<b>4</b>	<b>2582</b>	<b>448</b>	<b>3030</b>	<b>2620</b>	<b>469</b>	<b>3089</b>	<b>2517</b>	<b>456</b>	<b>2973</b>

Notes:  
 Capacity = Ministry of Education assigned loading of students in permanent space in a facility (includes anticipated capacity with proposed construction)  
 A factor has been applied to each school's enrolment to account for out of boundary student gains and loses due to magnet programs such as French Immersion (FI) and Special Education Area Classes (SpecEd)  
 Enrolment projections are approximations calculated based on the most current information available  
 \* Enrolment pressures at Lackner Woods to be addressed by the Grand River South/Sunnyside Accommodation Review

## TIMING OF IMPLEMENTATION

Scenario 1	2012/13	2013/14	2014/15	2015/16
<b>Alternate Recommendation #1</b> Breslau P.S. addition/renovations	Facility Improvements	September 2013 Addition/renovations completed		
<b>Alternate Recommendation #2</b> Mackenzie King P.S. addition/renovations and boundary change	Design/Tender	Facility Improvements Sept. Jun. JK option to attend either Mackenzie King P.S. or Breslau P.S. (for affected area)	September 2014 Construction completed. Mackenzie King P.S./Breslau P.S. boundary change Sept. Jun. Gr. 6 option to attend either Mackenzie King P.S. or Breslau P.S.	September 2015 All JK-6 students in affected area attend Mackenzie King P.S.
<b>Alternate Recommendation #3</b> Smithson P.S. site work and boundary change		Site work Sept. Jun. JK option to attend either Smithson P.S. or Mackenzie King P.S. (for affected area)	September 2014 Smithson P.S./Mackenzie King P.S. boundary change Sept. Jun. Gr. 6 option to attend either Mackenzie King P.S. or Smithson P.S. (for affected area)	September 2015 All JK-6 students in affected area attend Smithson P.S.
<b>Alternate Recommendation #4</b> Stanley Park P.S. boundary change			September 2014 Breslau P.S./Stanley Park P.S. boundary change Grand River South/Sunnyside and Stanley Park P.S. boundary change Sept. Jun. Gr. 8s in affected areas do not change schools	September 2015 All 7/8 students in affected areas change schools (Breslau P.S. students attend Stanley Park P.S. and Franklin P.S./Lackner Woods P.S. students attend school determined by the Grand River South/Sunnyside Accommodation Review)



**Legend**

**WRDSB Elementary Schools**

- Jr. Elementary (JK-6)
- ⊙ Composite Elementary (JK-8)
- ⊙ Sr. Elementary (7-8)
- Concept Future Roads
- ▨ Affected Areas

**Scenario 1 Boundaries**

- Green Breslau P.S. (JK-6)
- Pink Mackenzie King P.S. (JK-6)
- Yellow Franklin P.S. (JK-6)
- Orange Lackner Woods P.S. (JK-6)
- Purple Mackenzie King P.S. (JK-6)
- Light Orange Smithson P.S. (JK-6)
- Red Stanley Park P.S. (7-8)
- Dark Green Breslau P.S. (7-8)

**Alternate Recommendation #1: Breslau P.S. Addition/Renovations**

The Breslau/Stanley Park ARC recommends to the WRDSB that:

*An addition consisting of 118 pupil places, or approximately 5 classrooms, be constructed at Breslau Public School, to be completed for September 2013; and that*

*The project includes renovation items such as relocating/expanding the office/administration area, accessibility and additional parking.*

**Projected enrolment at Breslau P.S. with boundary change**

Year	2014	2015	2016	2017	2018	2019	2020	2021
<b>JK-6 Enrolment</b>	358	345	362	366	363	347	321	301
<b>7-8 Enrolment</b>	98	81	99	109	116	122	120	113
<b>Total Enrolment</b>	<b>456</b>	<b>426</b>	<b>461</b>	<b>475</b>	<b>479</b>	<b>469</b>	<b>441</b>	<b>414</b>

**Alternate Recommendation #2: Mackenzie King P.S. Addition/Renovations and Boundary Change**

The Breslau/Stanley Park ARC recommends to the WRDSB that:

*An addition consisting of 193 pupil places, or approximately 8 classrooms, be constructed at Mackenzie King Public School, to be completed for September 2014; and that*

*The project include renovation items such as relocating/expanding the office/administration area, accessibility and additional parking; and that*

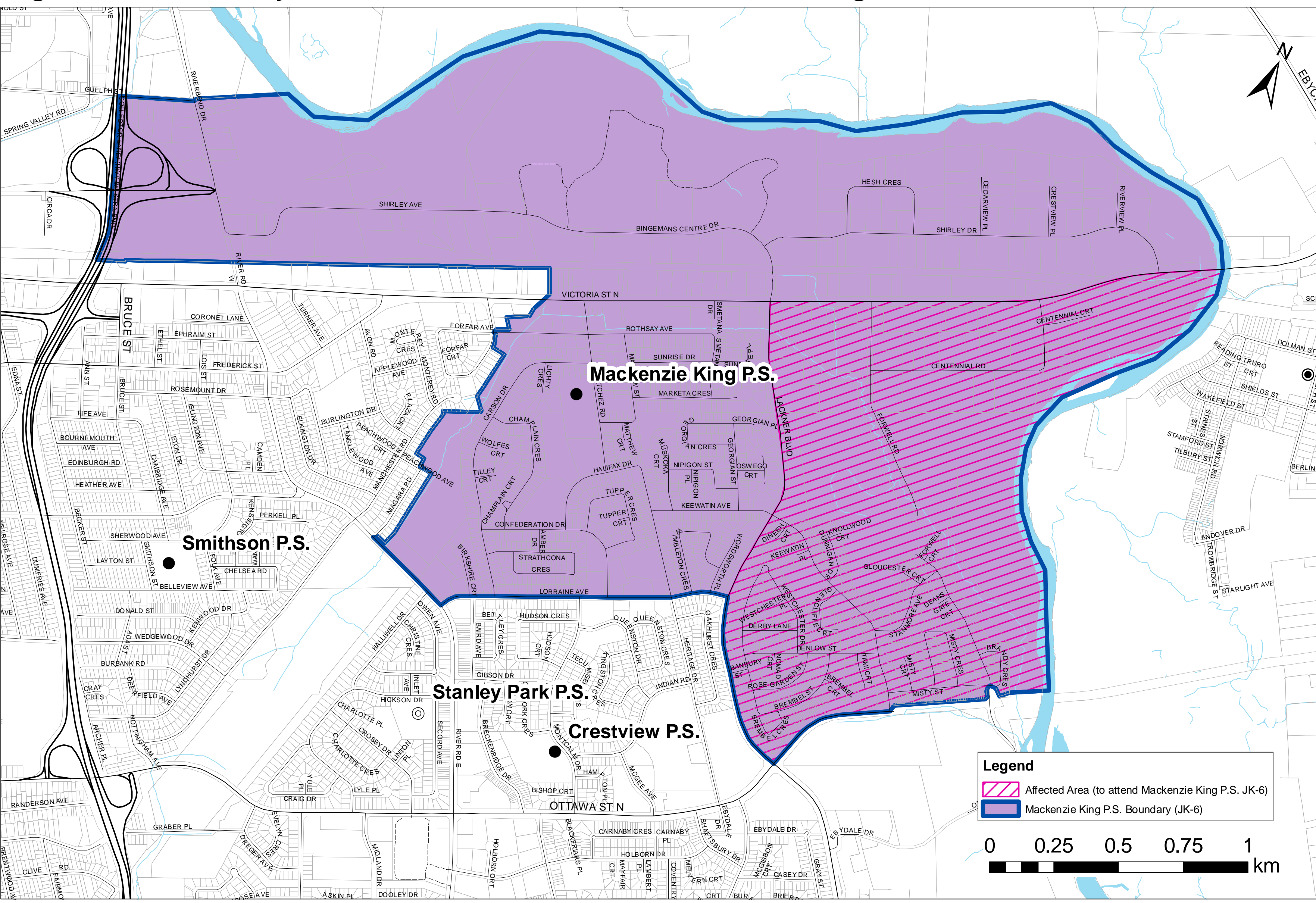
*The Mackenzie King P.S. boundary be modified to include a portion of the Breslau P.S. boundary, illustrated in Figure 7, effective September 2014; and that*

*Students entering Junior Kindergarten (JK) in September 2013 in the affected area be given the option to enrol at either Mackenzie King P.S. or Breslau P.S. during the 2013/14 school year; and that*

*Students entering Grade 6 in September 2014 in the affected area be given the option to enrol at either Mackenzie King P.S. or Breslau P.S. during the 2014/15 school year; and that*

*Transportation be extended to those Grade 6 students choosing to attend Breslau P.S. for the 2014/15 school year based on transportation eligibility; and that  
Transportation be provided to those JK students choosing to attend Mackenzie King P.S. for the 2013/14 school year based on transportation eligibility.*

**Figure 7: Boundary Recommendation for Mackenzie King P.S.**



**Projected enrolment at Mackenzie King P.S. with boundary change**

Year	2014	2015	2016	2017	2018	2019	2020	2021
<b>Total Enrolment</b>	295	338	362	369	357	362	349	340

### Alternate Recommendation #3: Smithson P.S. Site Work and Boundary Change

The Breslau/Stanley Park ARC recommends to the WRDSB that:

Approximately \$120,000 be allocated to Smithson P.S. to complete site work which includes improvements to the parking lot, prior to September 2014; and that

The Smithson P.S. boundary be modified to include a portion of the Mackenzie King P.S. boundary, as illustrated on Figure 5, effective September 2014; and that

Students entering Grade 6 in September 2014 in the affected area be given the option to enrol at either Smithson P.S. or Mackenzie King P.S. during the 2014/15 school year; and that

Transportation be extended to those Grade 6 students choosing to attend Mackenzie King P.S. for the 2014/15 school year based on transportation eligibility; and that

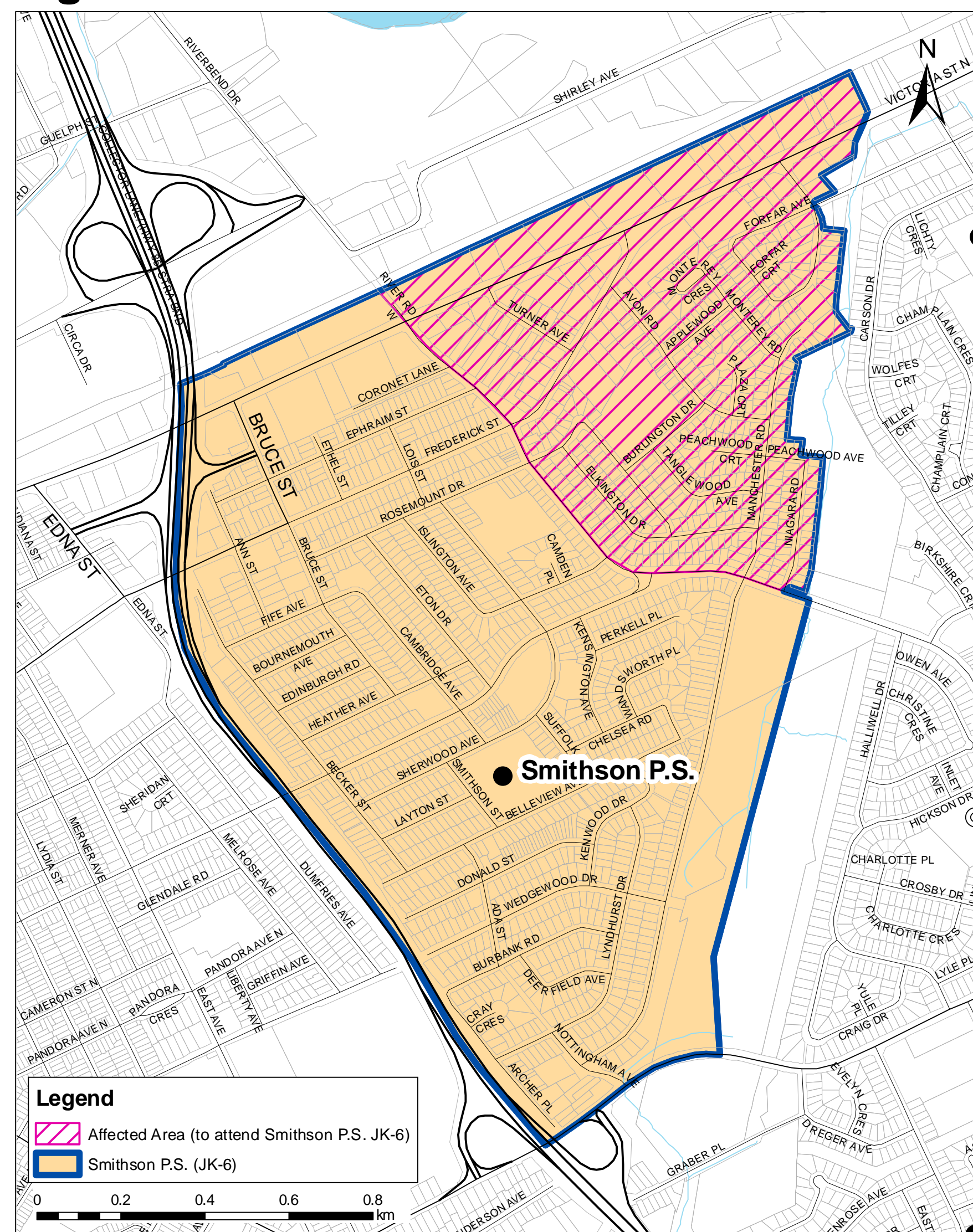
Students entering Junior Kindergarten (JK) in September 2013 in the affected area be given the option to enrol at either Smithson P.S. or Mackenzie King P.S. during the 2013/14 school year; and that

Transportation be extended to those JK students choosing to attend Smithson P.S. for the 2013/14 school year based on transportation eligibility.

#### Projected enrolment at Smithson P.S. with boundary change

Year	2014	2015	2016	2017	2018	2019	2020	2021
<b>Total Enrolment</b>	251	259	255	254	242	241	244	247

**Figure 5: Recommendation for Smithson P.S.**



### Alternate Recommendation #4: Stanley Park P.S. Boundary Change

The Breslau/Stanley Park ARC recommends to the WRDSB that:

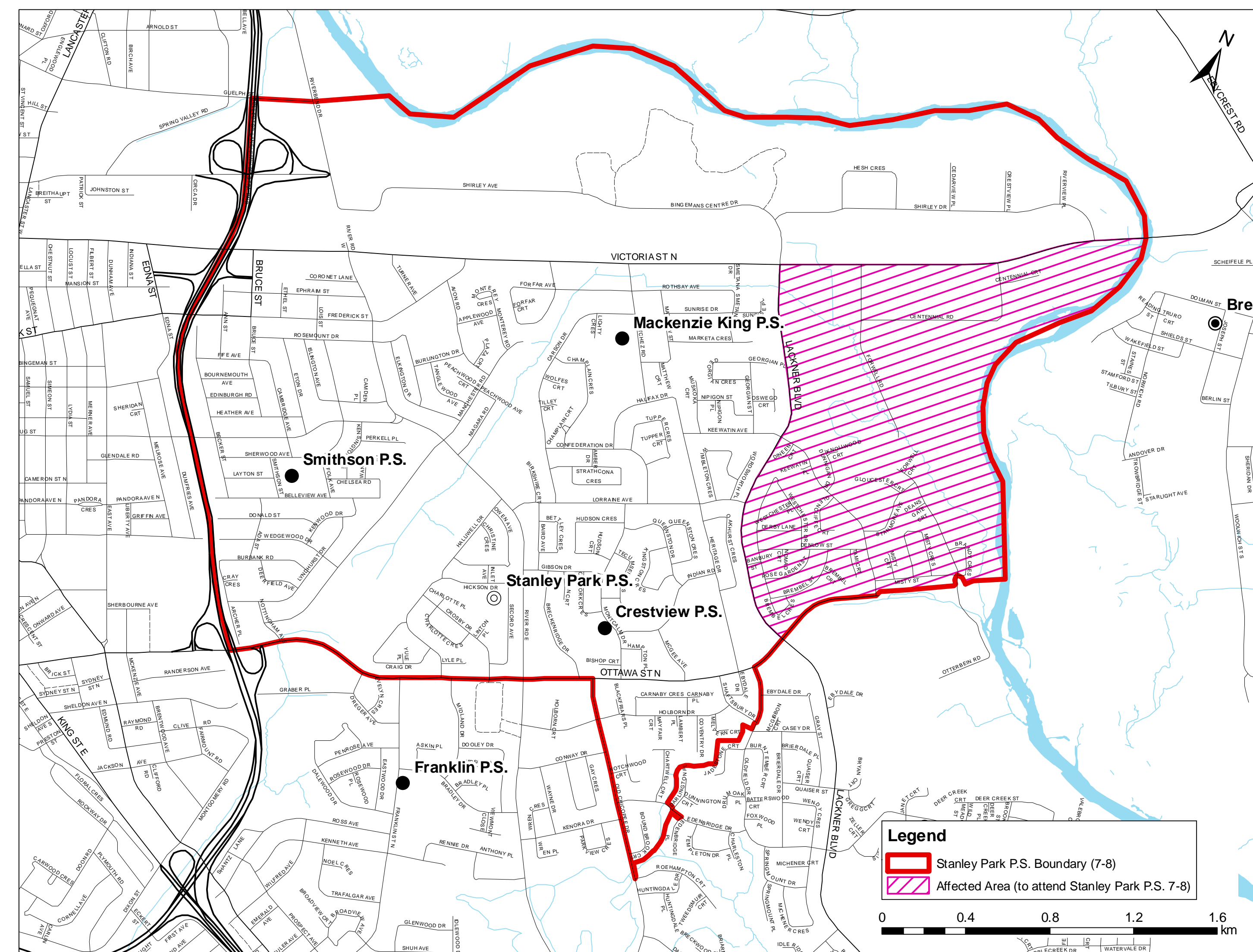
The Stanley Park P.S. boundary be modified to include a portion of the Breslau P.S. boundary, illustrated in Figure 8, effective September 2014 for Grade 7 and September 2015 for Grade 7 and 8; and that

The senior elementary (Grade 7 and Grade 8) boundary for students in the Lackner Woods P.S. and Franklin P.S. boundaries, as illustrated on Figure 6 be adjusted as recommended by the Grand River South/Sunnyside Elementary Schools Pupil Accommodation Review, effective September 2014 for Grade 7 and September 2015 for Grade 7 and 8.

#### Projected enrolment at Stanley Park P.S. with boundary change

Year	2014	2015	2016	2017	2018	2019	2020	2021
<b>Total Enrolment</b>	350	326	297	318	353	350	339	343

**Figure 8: Boundary Recommendation for Stanley Park P.S.**



### Alternate Recommendation #5: Be Mindful of Transitions

The Breslau/Stanley Park ARC recommends to the WRDSB that:

Every effort be made to smooth the transition for students, families and staff at the schools that are seeing significant change, be it new students, fewer students, new programs or facility changes.