

# Forest Hill/Trillium

## Elementary Schools Boundary Study

### Public Meeting #2

November 30, 2011

Forest Hill P.S. 7:00 p.m.



# Agenda

## Forest Hill/Trillium

### Elementary Schools Boundary Study

## Public Meeting #2

1. Welcome/Introductions
2. Boundary Study Process/Background
3. Proposed Boundary Recommendation
4. Implementation/Timing
5. Next Steps
6. Questions/Other

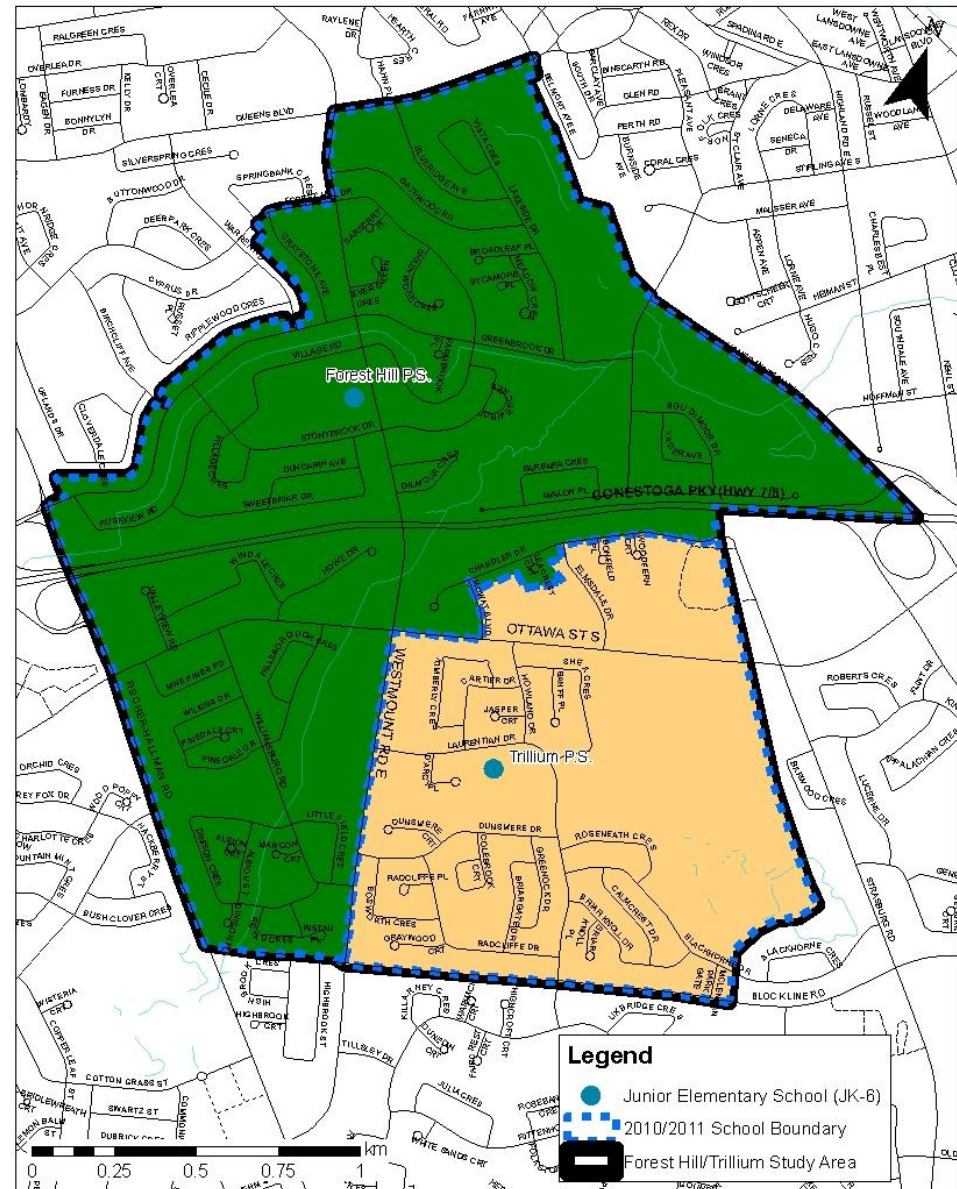


# Study Area

The Forest Hill/Trillium Area includes:

- Forest Hill P.S. (JK-6)
- Trillium P.S. (JK-6)

Forest Hill/Trillium Study Area



# Rationale for Forest Hill/Trillium Study

- The Board is conducting a boundary study because of:
  - School size
  - Enrolment changes/shifts
  - Implications of Full Day Kindergarten (FDK)



# School Size (Enrolment and Capacity)

School	2011/2012 Capacity*	October 31, 2011 Enrolment		Year Built	Site Size (acres)
		FTE	Total		
Forest Hill P.S.	483	553	553	1957	7.25
Trillium P.S.	236	178	204	1972	8.00

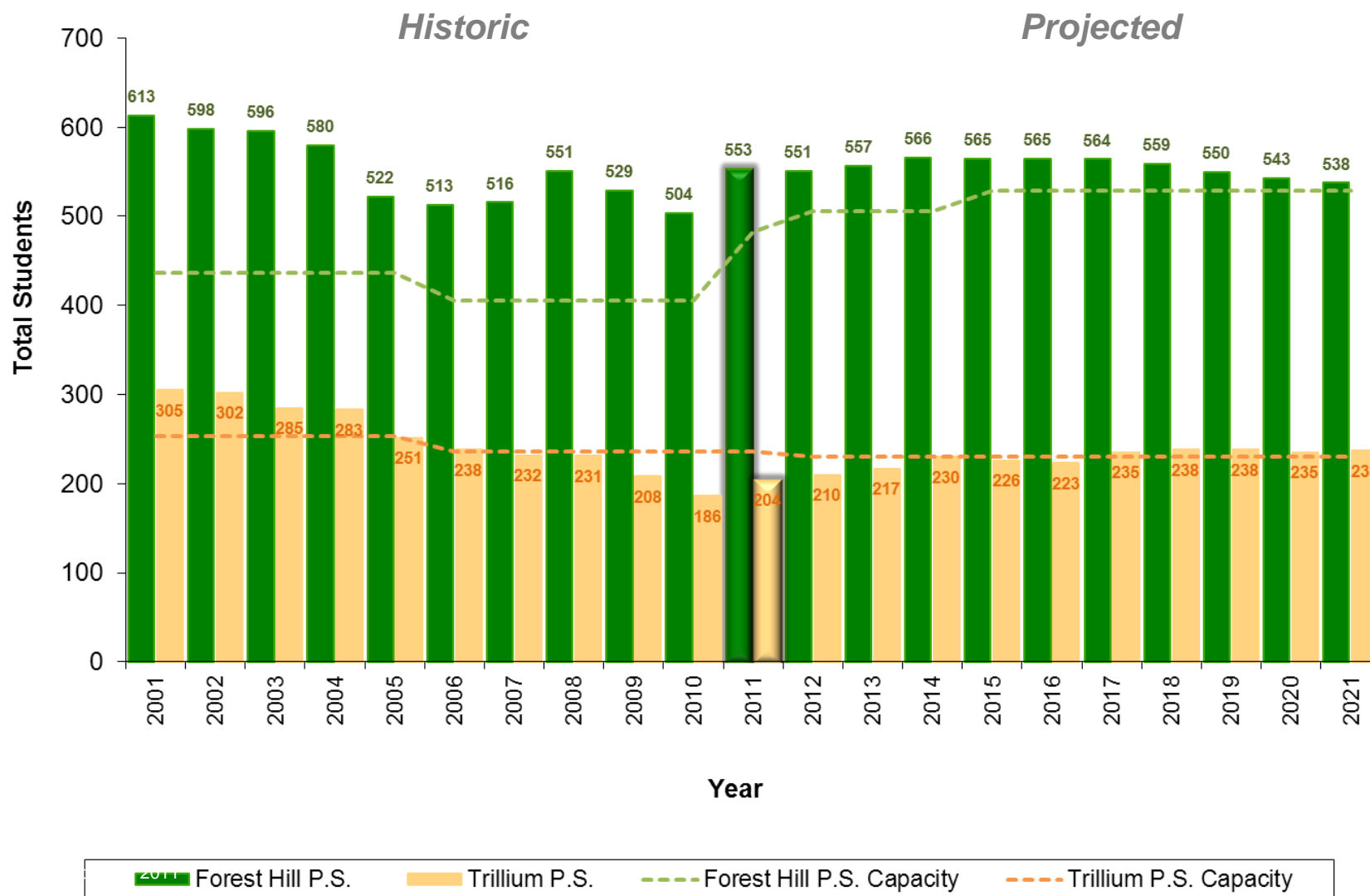
\*Calculated using Ministry of Education's loading of rooms in the school

FTE refers to Full-Time Equivalent – Kindergarten students in alternate day program only occupy space in the school ½ the time



# Projected and Historic Enrolment 2001-2021

**Historic and Projected Enrolment Forest Hill P.S. and Trillium P.S.  
2001-2021**



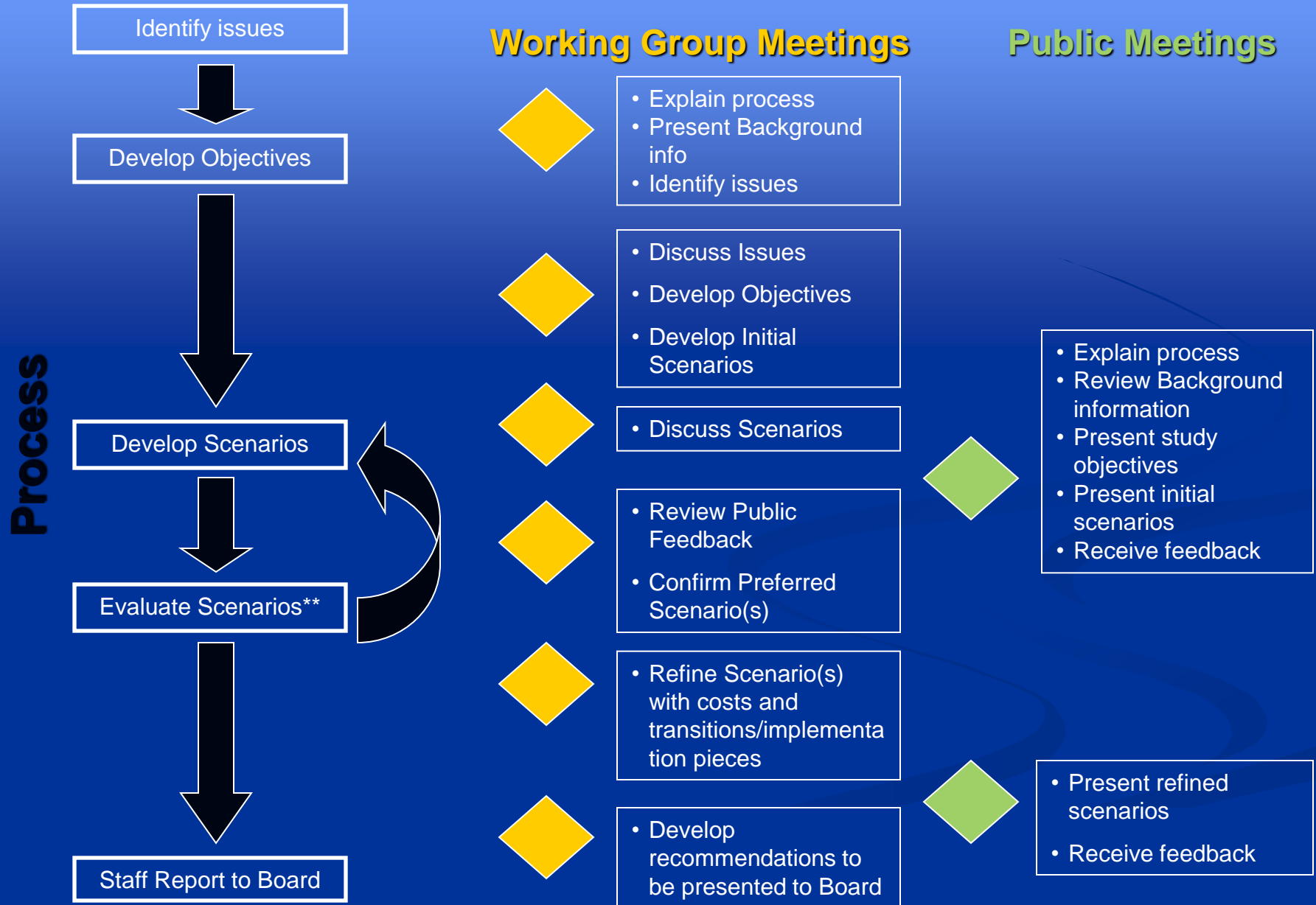
# Full-Day Kindergarten

**Forest Hill P.S. – Year 2 FDK site (program started this year)**

**Trillium P.S. – Year 3 FDK site (program starting in September 2012)**



# Boundary Study Process



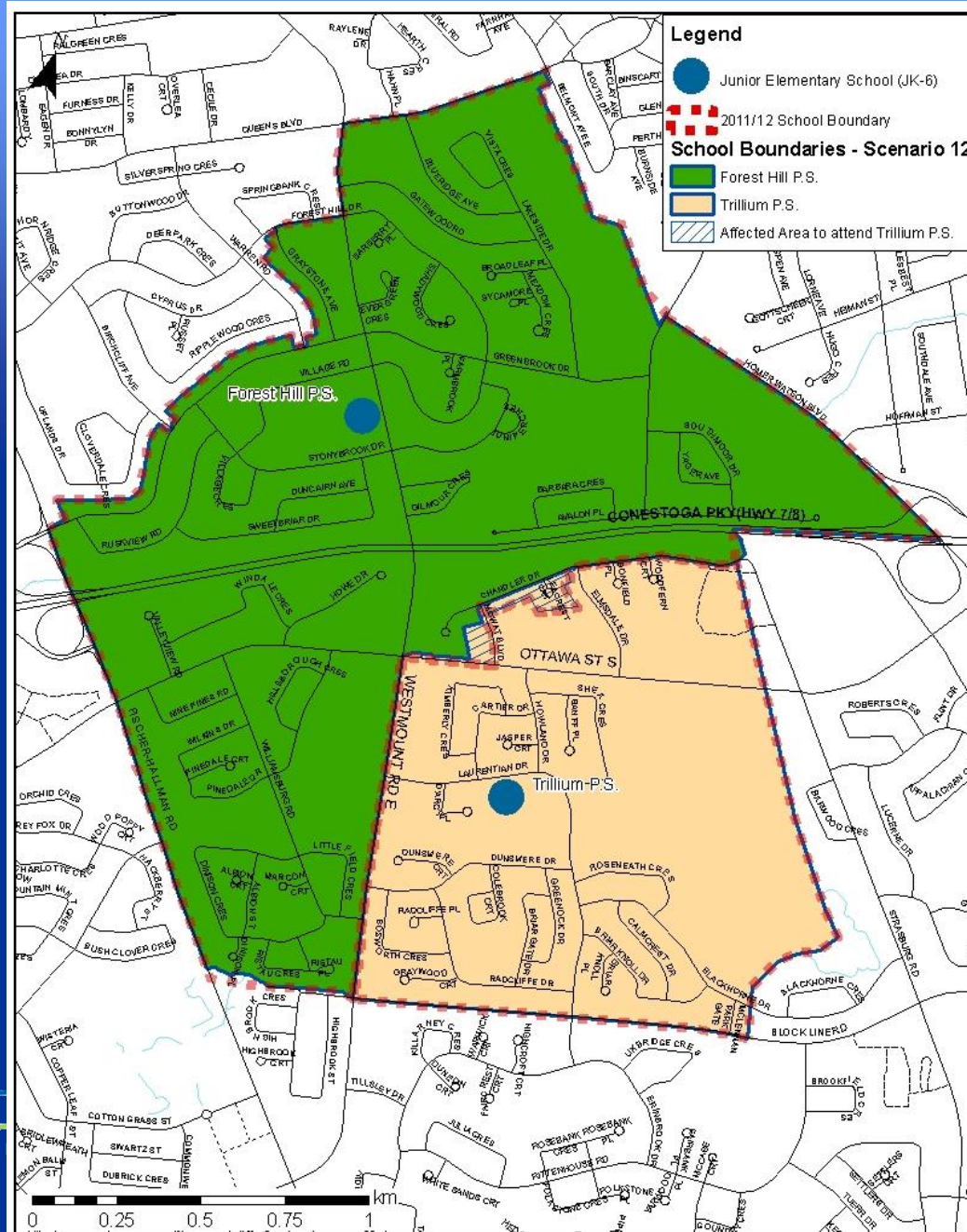
\*\*Scenario development and evaluation may go through multiple iterations as scenarios are evaluated , and new ideas result from the evaluation.



# Timing

	2011						2012					
	FEB	MAR	APR	MAY	JUN	JUL	AUG	SEP	OCT	NOV	DEC	JAN
<b>Working Group Meeting</b>				● May 17	● Jun 15			● Sep 21	● Oct 11	● Nov 2 Nov 16	● Dec 6	
<b>Public Meetings</b>									● Oct 27	● Nov 30		
<b>Board Reports</b>	● Feb. 14 Board Approval of Forest Hill/Trillium Boundary Study											● Jan. Recommendations presented to Board of Trustees

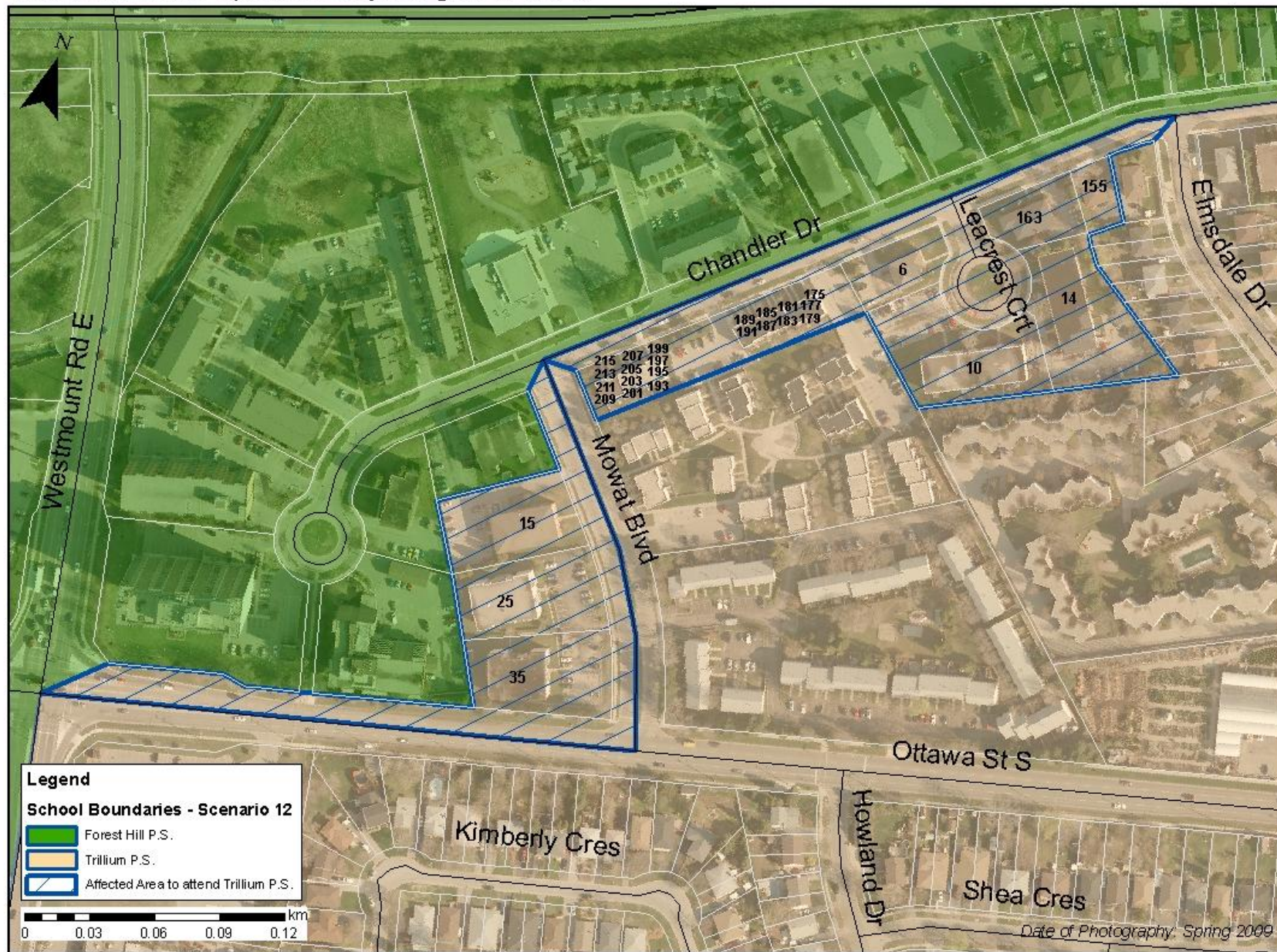
# Proposed Boundary Change - Scenario 12





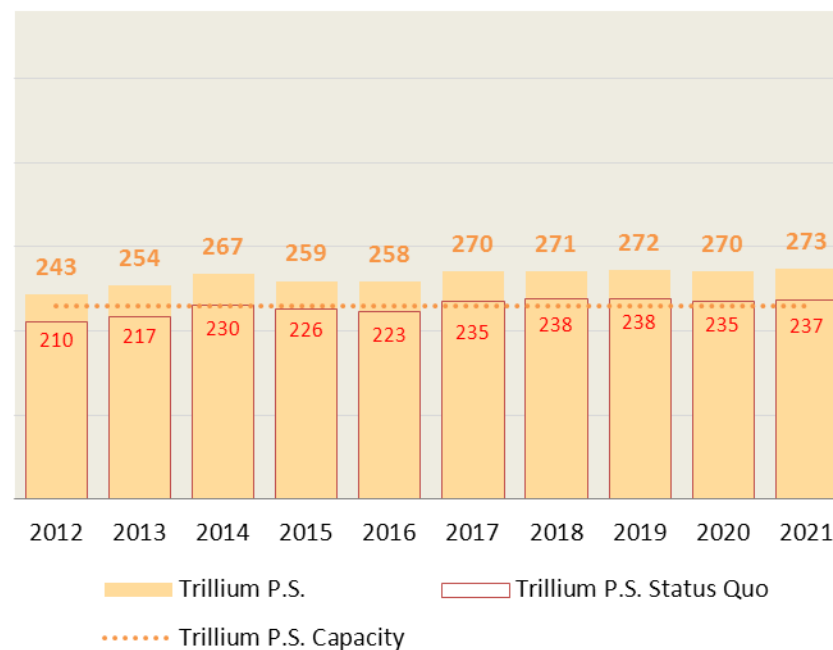
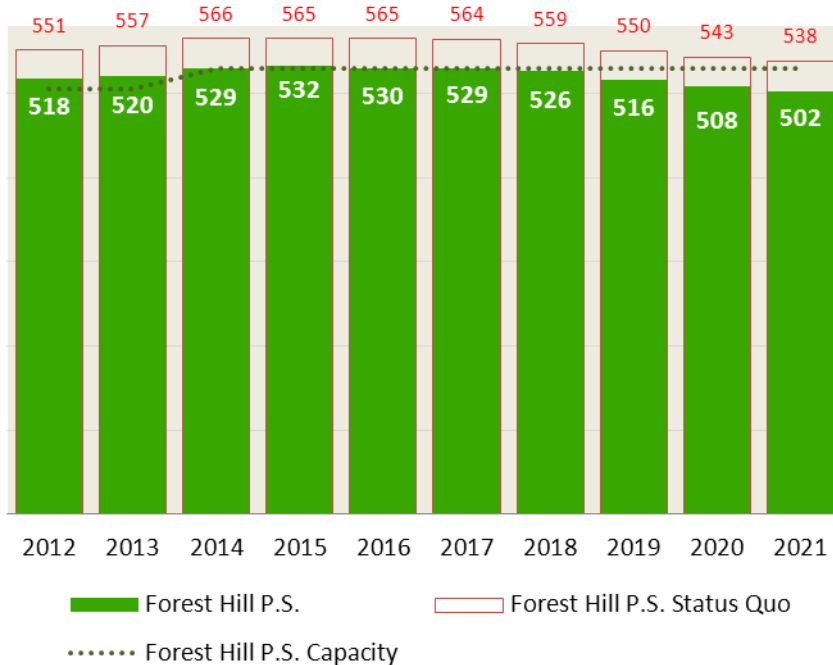
# Scenario 12 - Affected Area

Forest Hill/Trillium Propsed Boundary Change - Scenario 12



# Scenario 12 - Enrolment Projections

School	Capacity	2012	2014	2016	2018	2020	2021
Forest Hill P.S.	529	518	529	530	526	508	502
Trillium P.S.	230	243	267	258	271	270	273
<b>Total</b>	<b>759</b>	<b>761</b>	<b>796</b>	<b>788</b>	<b>797</b>	<b>778</b>	<b>775</b>



# Scenario 12 - Objectives

Objective	Meets?	Doesn't Meet?
Balance enrolment to capacity using Board Policy 3002 – Elementary School Size and Configuration, as a guideline for school size	X	X
Address the diverse needs of all students by creating a balance of enrolment that recognizes these needs	X	
Increase the number of students within a 'safe' walking distance to school	X	
Keep in mind the impact on the senior elementary and secondary school boundaries	X	
Minimize the impact on students where transitions are proposed	X	





## Scenario 12 – Proposed Implementation

- For September 2012 all JK-5 students in the affected area would attend Trillium P.S.
- Students entering Grade 6 in September 2012 would be given the option to enroll at either Forest Hill P.S. or Trillium P.S. during the 2012/13 school year
- For September 2013 all JK-6 students in the affected area would attend Trillium P.S.




## Next Steps

- Working Group to finalize recommendations
- Staff bring recommendations to Trustees
- Trustees vote on recommendations



# Webpage

<http://www.wrdsb.ca/planning/boundary-studies/forest-hill-trillium-elementary-schools-boundary-study>



Waterloo Region District  
School Board

Privacy | Feedback | Sitemap |  Search

Home | About Us | Programs | Schools | Careers | Staff

View | Edit

## Forest Hill/Trillium Boundary Study

**SCHOOLS INVOLVED:**

- [Forest Hill P.S.](#)
- [Trillium P.S.](#)

**BACKGROUND INFORMATION**

On February 14, 2011, the Waterloo Region District School Board approved the commencement of a boundary study of Forest Hill and Trillium Public Schools, to be called the Forest Hill/Trillium Boundary Study.

Enrolment at both Trillium P.S. and Forest Hill P.S. has been declining over the past 10 years. Trillium P.S. has experienced a 33 percent decline since 2000 and Forest Hill P.S. has declined by 6 percent over the same period. In June 2010, the board approved an 8 classroom addition on Forest Hill P.S. to eliminate the school's temporary structure (porta-pack) and to address the needs of the school for Full-Day Kindergarten (FDK) since it is a year 2 FDK site. This addition, however, has not addressed concerns about the ancillary spaces (office, gymnasium, library, etc.) within the school that would usually accompany a school with enrolment over 500 students. Therefore, a boundary change between these two schools with the objective of adding students to Trillium P.S. while maintaining a viable organization size within the renovated Forest Hill P.S. facility was approved.

- [Study area map](#)
- [Projection Areas and Enrolment by Area](#)
- [2006 Statistics Canada Census Data - Profile of Projection Areas](#)
- [Study Area Boundary Map](#)
- [Forest Hill P.S. Walking Web Map](#)
- [Trillium P.S. Walking Web Map](#)

**PUBLIC MEETING ANNOUNCEMENTS, PRESENTATIONS AND MINUTES**

- Public Meeting #1 - Thursday October 27, 2011
  - [Announcement](#)
  - [Presentation](#)
  - [Minutes](#)
  - [Study Objectives](#)
  - [Comment Sheet](#)
  - Display Boards:
    - [Status Quo](#)
    - [Scenario 8](#)
    - [Scenario 9](#)
    - [Scenario 10](#)
    - [Context](#)
- Public Meeting #2 - Wednesday, November 30, 2011
  - [Announcement](#)
  - Working Group Boundary Recommendation - [Scenario 12](#)

### Planning Menu

- Planning Home Page
- Accommodation Reviews
- Active and Safe Routes to School
- Boundary Studies**
  - Forest Hill-Trillium Elementary Schools Boundary Study
  - Secondary School Boundary Study
  - Completed Boundary Studies
- Education Development Changes
- School Boundary and Location Maps
- Facility Partnership Opportunities

## Browse:

- Working Group meeting Agendas, Presentations and Minutes
- Public Meeting Notices, Agendas and Minutes
- Resource Materials and Maps



# Contact Information

- Website: [www.wrdsb.ca](http://www.wrdsb.ca)
  - Boundary Studies
    - Forest Hill/Trillium
- E-mail: [boundaryfeedback@wrdsb.on.ca](mailto:boundaryfeedback@wrdsb.on.ca)  
[Lauren\\_Manske@wrdsb.on.ca](mailto:Lauren_Manske@wrdsb.on.ca)
- Phone: 519-570-0003 ext. 4419 or 4596



**Thank you!**

**Questions or Comments?**

