

WEST GALT

Elementary Schools' Pupil Accommodation Review

Public Meeting #3

March 27, 2012

St. Andrew's P.S. 7:00 p.m.



Agenda

West Galt

Elementary Schools' Pupil Accommodation Review

Public Meeting #3

1. Welcome/Introductions
2. Accommodation Review Process
3. Review Objectives
4. Accommodation Options (Scenarios)
5. Next Steps
6. Questions/Other



What is a Pupil Accommodation Review?

- a formal public process that ensures a decision taken by a school board regarding the future of student accommodation has the full involvement of an informed local community
- a process based on a broad range of criteria regarding the quality of the learning experience for students



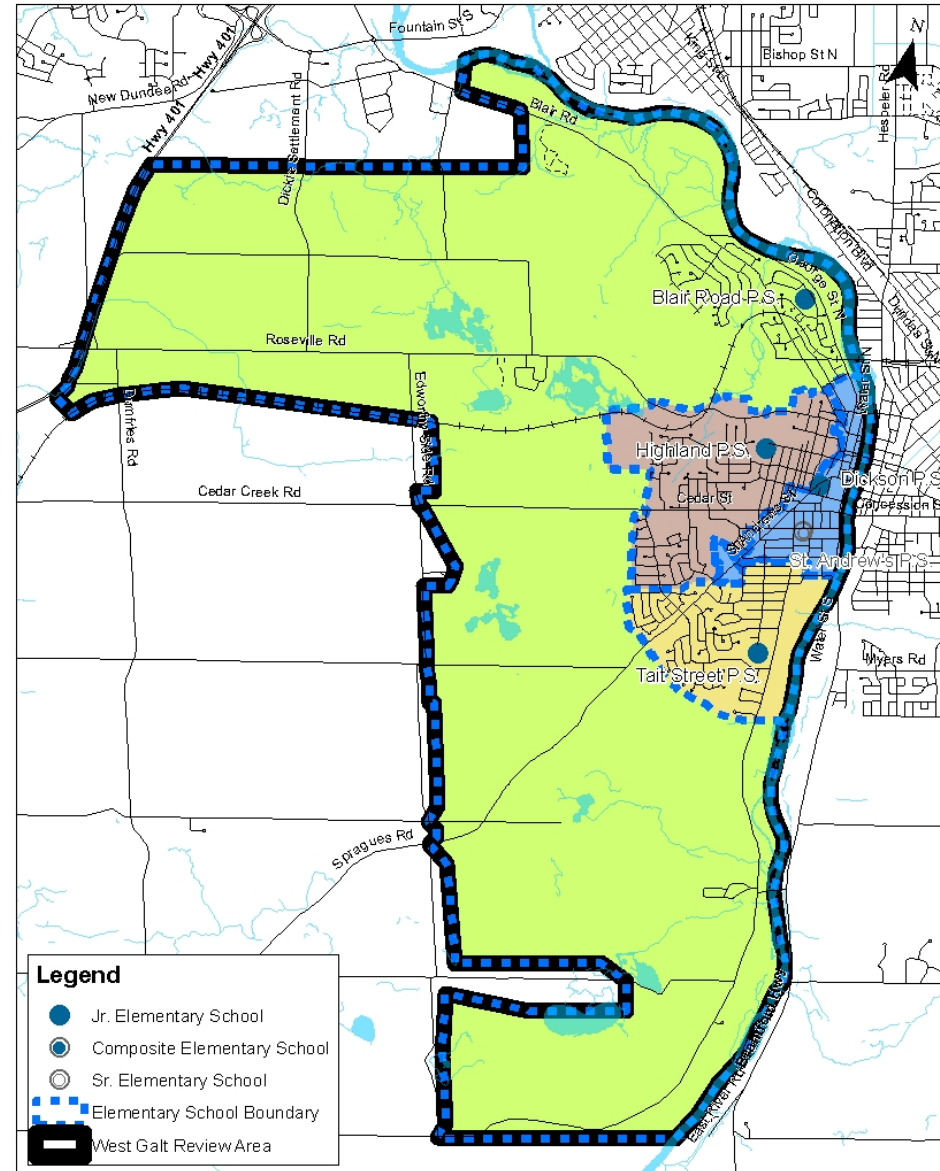
Review Area

■ The West Galt Review Area includes:

- Blair Road P.S. (JK-6)
- Dickson P.S. (JK-5)
- Highland P.S. (JK-5)
- St. Andrew's P.S. (6-8)
- Tait Street P.S. (JK-6)



West Galt Review Area



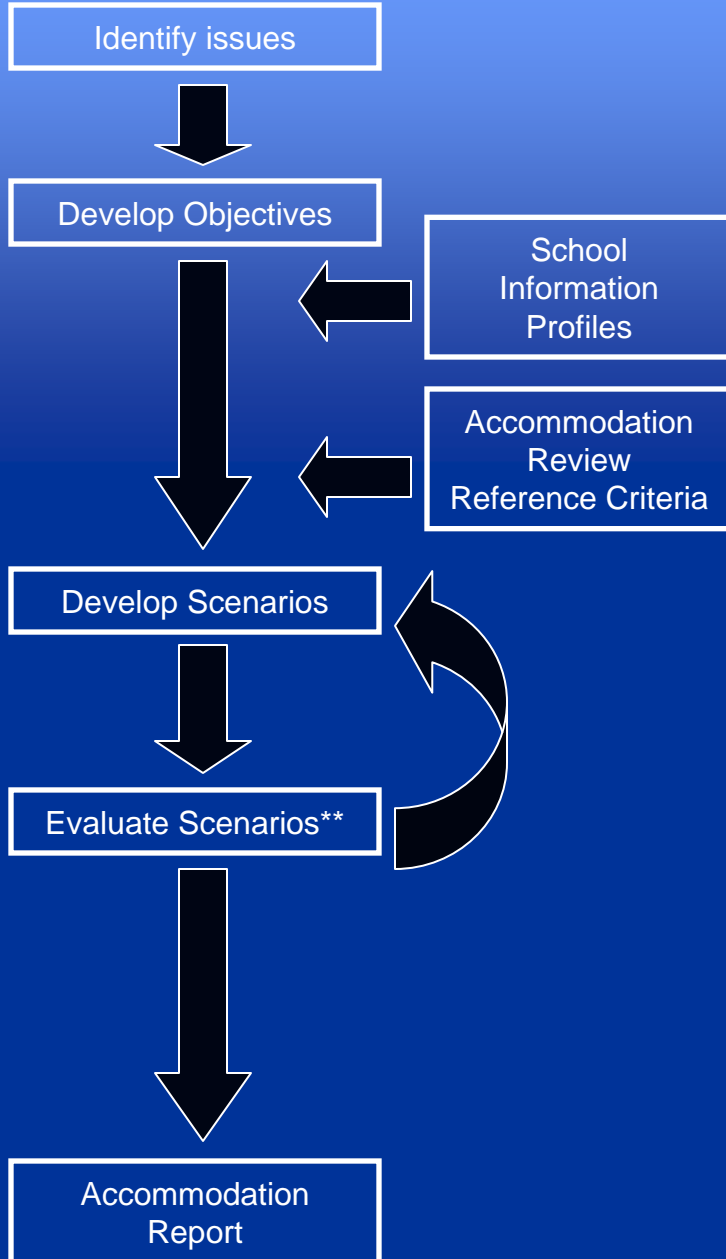
Potential Outcomes of an Accommodation Review

- An accommodation review may result in one or more of the following:
 - School closure/consolidation
 - Changes in attendance boundaries
 - Changes in program or grade offerings
 - Major capital construction projects (additions, new schools)



Accommodation Review Process

Process



ARC Meetings

- Explain process
- Present Background info
- Identify issues
- Discuss limiting factors

- Discuss Issues
- Complete Info Profiles
- Develop Objectives

- Develop Scenarios

- Review Public Feedback
- Refine Scenario(s)

- Review Public Feedback
- Confirm Preferred Scenario(s)

- Complete Accommodation Report

Public Meetings

1

- Explain process
- Review Background information
- Receive Feedback

2

- Present Draft Objectives/ Initial Scenarios

3

- Present Refined Scenarios

4

- Present Accommodation Report
- Receive Feedback

**Scenario development and evaluation may go through multiple iterations as scenarios are evaluated , and new ideas result from the evaluation.

Accommodation Review Committee (ARC)

Objectives

- To reorganize the JK-5, 6-8 school organizations in favour of JK-6, JK-8, or 7-8
- To reduce the number of students currently attending Highland P.S. to better match the enrolment to the schools' built capacity
- To reduce the potential for combined grades at schools by moving towards the following criteria (*from Board Policy 3002*):
 - *JK-6 facilities between 350 and 400 students (approx. 2 classes/grade)*
 - *JK-8 facilities between 500 and 650 students (approx. 2 classes/grade JK-6, 2+ classes/grade 7-8)*
- To increase the number of students within walking distance to their assigned school
- To reduce the reliance on portable classrooms for long-term student accommodation
- To reduce unused (surplus) capacity by organizing schools and boundaries to achieve utilization rates (enrolment/capacity) that exceed 80% over the long-term (approx. 10 years)
- To maintain those school buildings that can provide appropriate, purpose-built facilities (kindergarten rooms, gyms, libraries, etc.)
- To reduce the cost to achieve legislated accessibility requirements by 2025

Scenarios – Accommodation Options

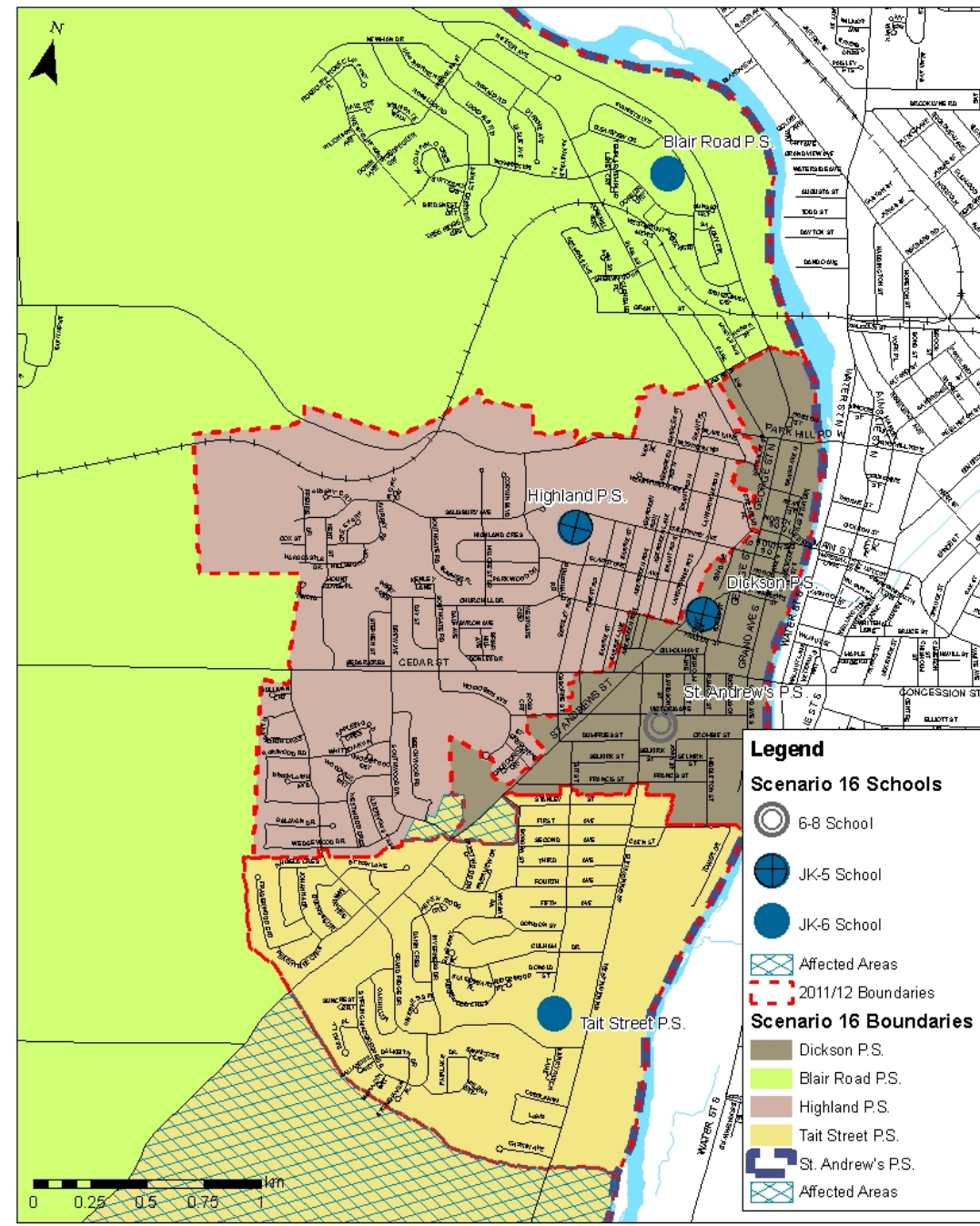
- Short-term boundary changes
 - Scenario 16
 - Scenario 20
- Long-term strategy
 - Scenario 14



Scenario 16

- Boundary changes for all schools
- Dickson P.S. and Highland P.S. students attend St. Andrew's P.S. for 6-8 (no change)
- Blair Road P.S. and Tait Street P.S. students attend St. Andrew's P.S. for 7-8 (no change)

West Galt Scenario 16



Scenario 16 Enrolment Projections

School	OTG Capacity	Grades	Projected Total Enrolment by Year					FI	Spec. Ed.
			2013	2015	2017	2019	2021		
Blair Road PS	294	JK-6	226	239	243	241	238		•
Dickson PS	161	JK-5	109	105	102	106	104		
Highland PS	464	JK-5	492	484	490	468	469	•	
St. Andrew's PS	424	6-8	405	393	403	429	403	•	
Tait Street PS	348	JK-6	360	356	367	366	385		
TOTAL	1691		1592	1577	1605	1610	1599		



Scenario 16 Objectives Summary

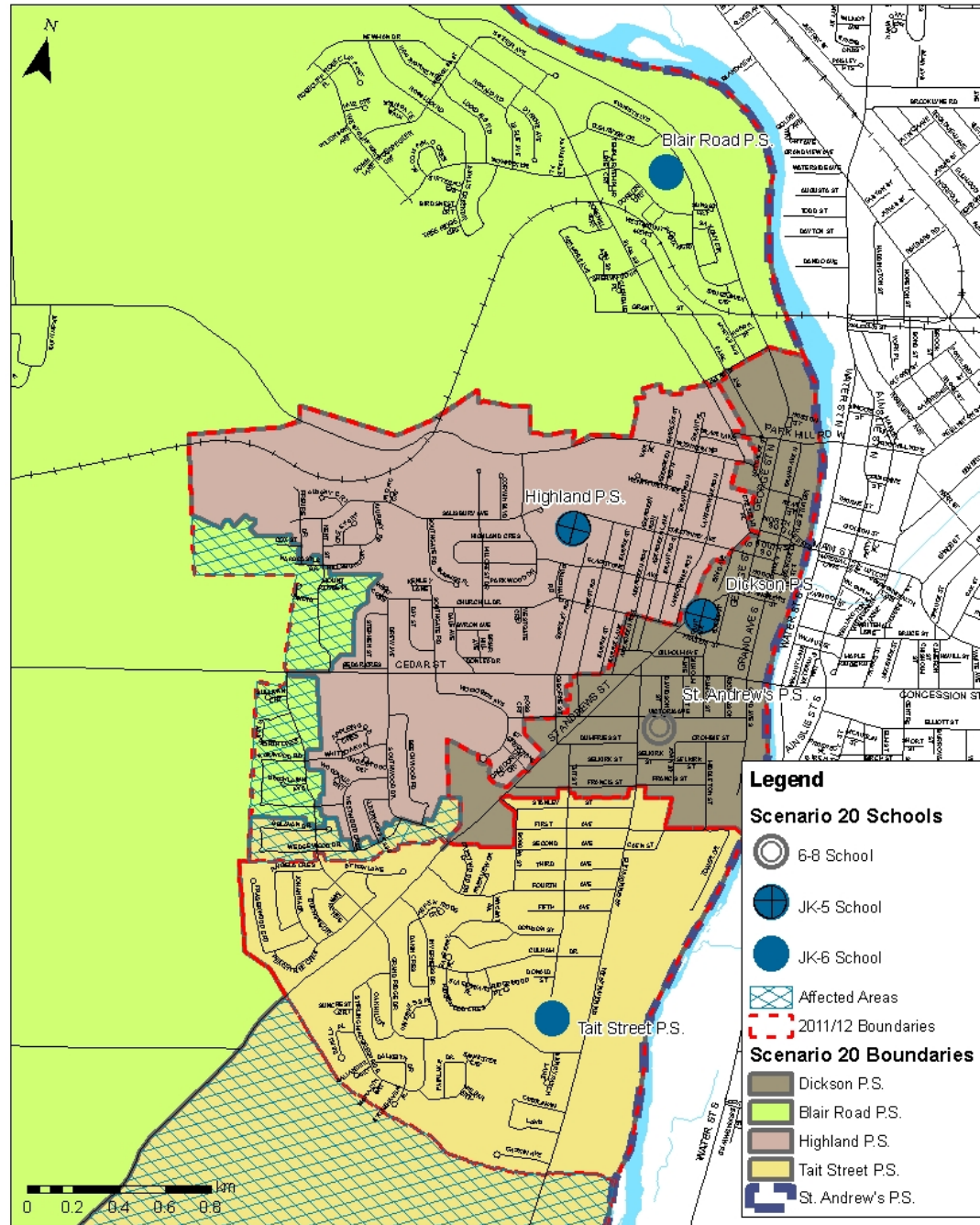
Objective	Meets	Doesn't Meet
To reorganize the JK□5, 6-8 school organizations in favour of JK□6, JK□8 or 7-8		X
To reduce the number of students currently attending Highland P.S. to better match the enrolment to the schools' built capacity	X	
To reduce the potential for combined grades at schools by moving towards the following criteria (from Board Policy 3002): <ul style="list-style-type: none"> • JK□6 facilities between 350 and 400 students (approx. 2 classes/grade) • JK□8 facilities between 500 and 650 students (approx. 2 classes/grade JK□6, 2+ classes/grade 7□8) 	X	
To increase the number of students within walking distance to their assigned school		X
To reduce the reliance on portable classrooms for long-term student accommodation	X	
To reduce unused (surplus) capacity by organizing schools and boundaries to achieve utilization rates (enrolment/capacity) that exceed 80% over the long□term (approx. 10 years)	X	
To maintain those school buildings that can provide appropriate, purpose□built facilities (kindergarten rooms, gyms, libraries, etc.)		X
To reduce the cost to achieve legislated accessibility requirements by 2025		X



Scenario 20

- Boundary changes for all schools
- Dickson P.S. and Highland P.S. students attend St. Andrew's P.S. for 6-8 (no change)
- Blair Road P.S. and Tait Street P.S. students attend St. Andrew's P.S. for 7-8 (no change)

West Galt Scenario 20



Scenario 20 Enrolment Projections

School	OTG Capacity	Grades	Projected Total Enrolment by Year					FI	Spec. Ed.
			2013	2015	2017	2019	2021		
Blair Road PS	294	JK-6	266	284	292	304	311		•
Dickson PS	161	JK-5	109	105	102	106	104		
Highland PS	464	JK-5	452	447	447	412	404	•	
St. Andrew's PS	424	6-8	398	381	396	421	394	•	
Tait Street PS	348	JK-6	367	360	368	367	386		
TOTAL	1691		1592	1577	1605	1610	1599		



Scenario 20 Objectives Summary

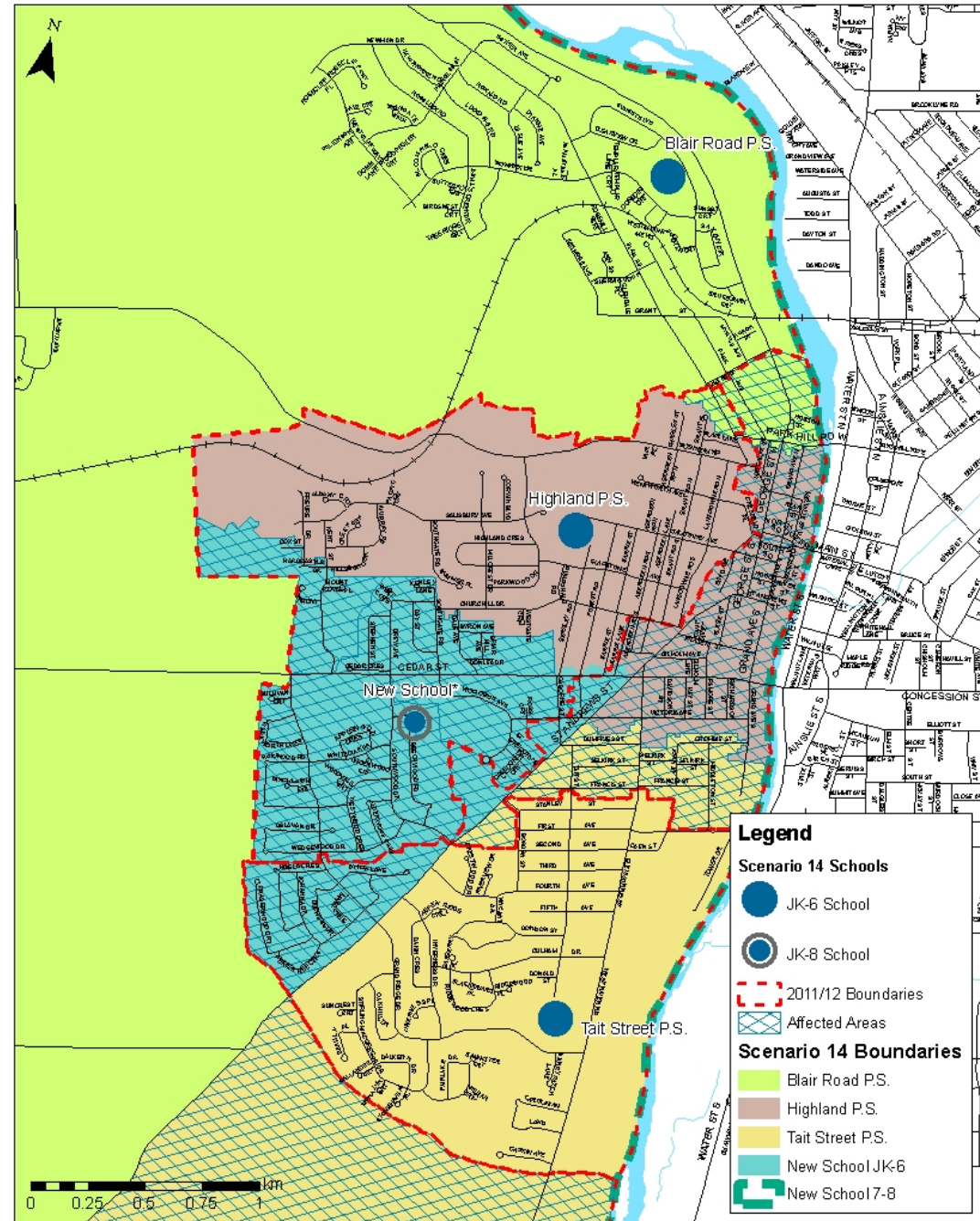
Objective	Meets	Doesn't Meet
To reorganize the JK□5, 6-8 school organizations in favour of JK□6, JK□8 or 7-8		X
To reduce the number of students currently attending Highland P.S. to better match the enrolment to the schools' built capacity	X	
To reduce the potential for combined grades at schools by moving towards the following criteria (from Board Policy 3002): <ul style="list-style-type: none"> • JK□6 facilities between 350 and 400 students (approx. 2 classes/grade) • JK□8 facilities between 500 and 650 students (approx. 2 classes/grade JK□6, 2+ classes/grade 7□8) 	X	
To increase the number of students within walking distance to their assigned school		X
To reduce the reliance on portable classrooms for long-term student accommodation	X	
To reduce unused (surplus) capacity by organizing schools and boundaries to achieve utilization rates (enrolment/capacity) that exceed 80% over the long□term (approx. 10 years)	X	
To maintain those school buildings that can provide appropriate, purpose□built facilities (kindergarten rooms, gyms, libraries, etc.)		X
To reduce the cost to achieve legislated accessibility requirements by 2025		X



Scenario 14

West Galt Scenario 14

- Dickson P.S. closes
- St. Andrew's P.S. closes
- A new JK-8 school built on Beechwood Rd*
- Blair Road P.S., Highland P.S., and Tait Street P.S. attend New School for Gr. 7 & 8
- Highland P.S. adds Gr. 6
- Boundary changes for all schools



* Subject to site feasibility study

Scenario 14 Enrolment Projections

School	OTG Capacity	Grades	Projected Total Enrolment by Year					FI	Spec. Ed.
			2013	2015	2017	2019	2021		
Blair Road PS	294	JK-6	226	239	243	241	238		•
Dickson PS	CLOSED								
Highland PS	464	JK-6	445	438	440	420	421	• (1-6)	
St. Andrew's PS	CLOSED								
Tait Street PS	348	JK-6	298	286	292	298	320		
New School *	650	JK-8	623	614	630	654	619	• (7-8)	
TOTAL	1756		1592	1577	1605	1613	1598		



Scenario 14 Objectives Summary

Objective	Meets	Doesn't Meet
To reorganize the JK□5, 6-8 school organizations in favour of JK□6, JK□8 or 7-8	X	
To reduce the number of students currently attending Highland P.S. to better match the enrolment to the schools' built capacity	X	
To reduce the potential for combined grades at schools by moving towards the following criteria (from Board Policy 3002): <ul style="list-style-type: none"> • JK□6 facilities between 350 and 400 students (approx. 2 classes/grade) • JK□8 facilities between 500 and 650 students (approx. 2 classes/grade JK□6, 2+ classes/grade 7□8) 		X
To increase the number of students within walking distance to their assigned school	X	
To reduce the reliance on portable classrooms for long-term student accommodation	X	
To reduce unused (surplus) capacity by organizing schools and boundaries to achieve utilization rates (enrolment/capacity) that exceed 80% over the long□term (approx. 10 years)	X	
To maintain those school buildings that can provide appropriate, purpose□built facilities (kindergarten rooms, gyms, libraries, etc.)	X	
To reduce the cost to achieve legislated accessibility requirements by 2025	X	



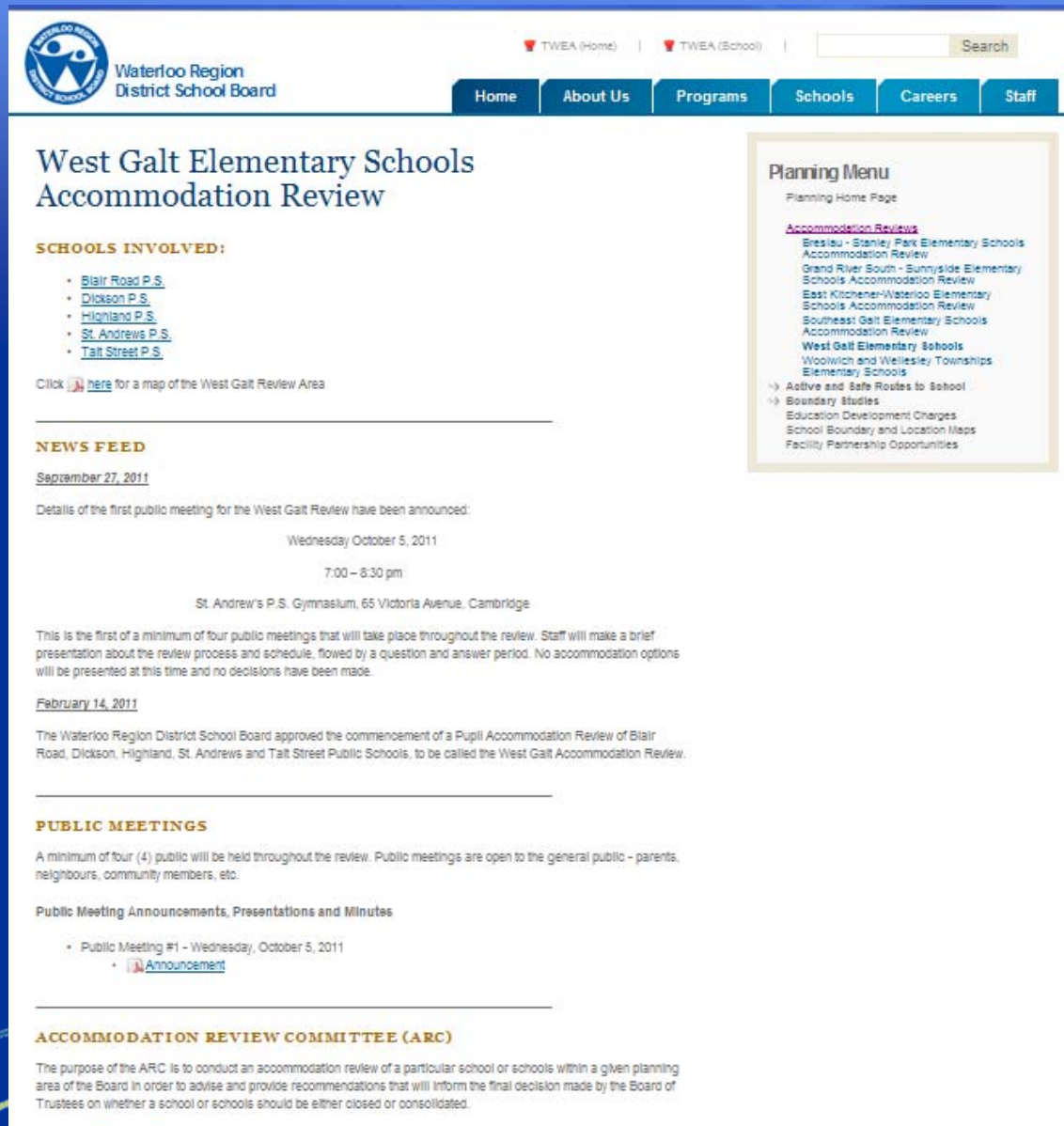
Next Steps

- ARC reviews comments from Public Meeting and develops recommendations including transition strategies
- ARC prepares draft Accommodation Report and Recommendations
- Public Meeting #4
 - Scheduled for May 1, 2012
 - Draft Accommodation Report presented
- ARC submits final Accommodation Report to Trustees
 - Tentatively May 14, 2012
- Staff review ARC report and prepare their own report and recommendations
- Trustees vote on recommendations of ARC and Staff
 - Tentatively late September/early October 2012



Webpage

<http://www.wrdsb.ca/planning/accommodation-reviews/west-galt-elementary-schools>



The screenshot shows the Waterloo Region District School Board website. The header includes the board's logo, name, and navigation links: Home, About Us, Programs, Schools, Careers, and Staff. A search bar is also present. The main content area is titled "West Galt Elementary Schools Accommodation Review". Under "SCHOOLS INVOLVED:", a list includes Blair Road P.S., Dickson P.S., Highland P.S., St. Andrews P.S., and Tait Street P.S. A link to a map of the review area is provided. The "NEWS FEED" section contains two entries: one dated September 27, 2011, about the first public meeting on Wednesday, October 5, 2011, at 7:00-8:30 pm at St. Andrew's P.S. Gymnasium, and another dated February 14, 2011, about the board's approval of the review process. The "PUBLIC MEETINGS" section states that a minimum of four public meetings will be held and provides a link to public meeting announcements. The "ACCOMMODATION REVIEW COMMITTEE (ARC)" section explains its purpose: to conduct a review and provide recommendations to the board on whether schools should be closed or consolidated.

Waterloo Region District School Board

Home About Us Programs Schools Careers Staff

West Galt Elementary Schools Accommodation Review

SCHOOLS INVOLVED:

- [Blair Road P.S.](#)
- [Dickson P.S.](#)
- [Highland P.S.](#)
- [St. Andrews P.S.](#)
- [Tait Street P.S.](#)

Click [here](#) for a map of the West Galt Review Area

NEWS FEED

September 27, 2011

Details of the first public meeting for the West Galt Review have been announced:

Wednesday October 5, 2011

7:00 – 8:30 pm

St. Andrew's P.S. Gymnasium, 65 Victoria Avenue, Cambridge

This is the first of a minimum of four public meetings that will take place throughout the review. Staff will make a brief presentation about the review process and schedule, followed by a question and answer period. No accommodation options will be presented at this time and no decisions have been made.

February 14, 2011

The Waterloo Region District School Board approved the commencement of a Pupil Accommodation Review of Blair Road, Dickson, Highland, St. Andrews and Tait Street Public Schools, to be called the West Galt Accommodation Review.

PUBLIC MEETINGS

A minimum of four (4) public will be held throughout the review. Public meetings are open to the general public – parents, neighbours, community members, etc.

Public Meeting Announcements, Presentations and Minutes

- Public Meeting #1 - Wednesday, October 5, 2011
- [Announcement](#)

ACCOMMODATION REVIEW COMMITTEE (ARC)

The purpose of the ARC is to conduct an accommodation review of a particular school or schools within a given planning area of the Board in order to advise and provide recommendations that will inform the final decision made by the Board of Trustees on whether a school or schools should be either closed or consolidated.

Planning Menu

Planning Home Page

Accommodation Reviews

- Breslau - Stanley Park Elementary Schools Accommodation Review
- Grand River South - Sunnyside Elementary Schools Accommodation Review
- East Kitchener-Waterloo Elementary Schools Accommodation Review
- Southeast Galt Elementary Schools Accommodation Review
- West Galt Elementary Schools**
- Woolwich and Wellesley Townships Elementary Schools

→ Active and Safe Routes to School

→ Boundary Studies

- Education Development Charges
- School Boundary and Location Maps
- Facility Partnership Opportunities

Browse:

- ARC meeting Agendas, Presentations and Minutes
- Policies and Guidelines for Pupil Accommodation Reviews (as set out by the Ministry of Education)
- Public Meeting Notices, Agendas and Minutes
- Resource Materials and Maps

Contact Information

- Website: www.wrdsb.ca
 - Accommodation Reviews
 - West Galt
- E-mail: boundaryfeedback@wrdsb.on.ca
- Phone: 519-570-0003 ext. 4419



Thank you!

Questions or Comments?

