

# **Grand River South/Sunnyside**

## **Elementary Schools' Pupil Accommodation Review**

### **Public Meeting # 2**

May 26, 2010

Sunnyside P.S. 7:00 p.m.



**Waterloo Region  
District School Board**

May 25, 2010

# Agenda

## Grand River South/Sunnyside

Elementary Schools' Pupil Accommodation Review

### Public Meeting # 2

1. Welcome/Introductions
2. Brief Review
  - Accommodation Review Process
  - Issues
3. Draft Objectives
4. Scenarios
5. Break-out Sessions
6. General Session, Q & A
7. Next Steps



May 25, 2010

Waterloo Region  
District School Board

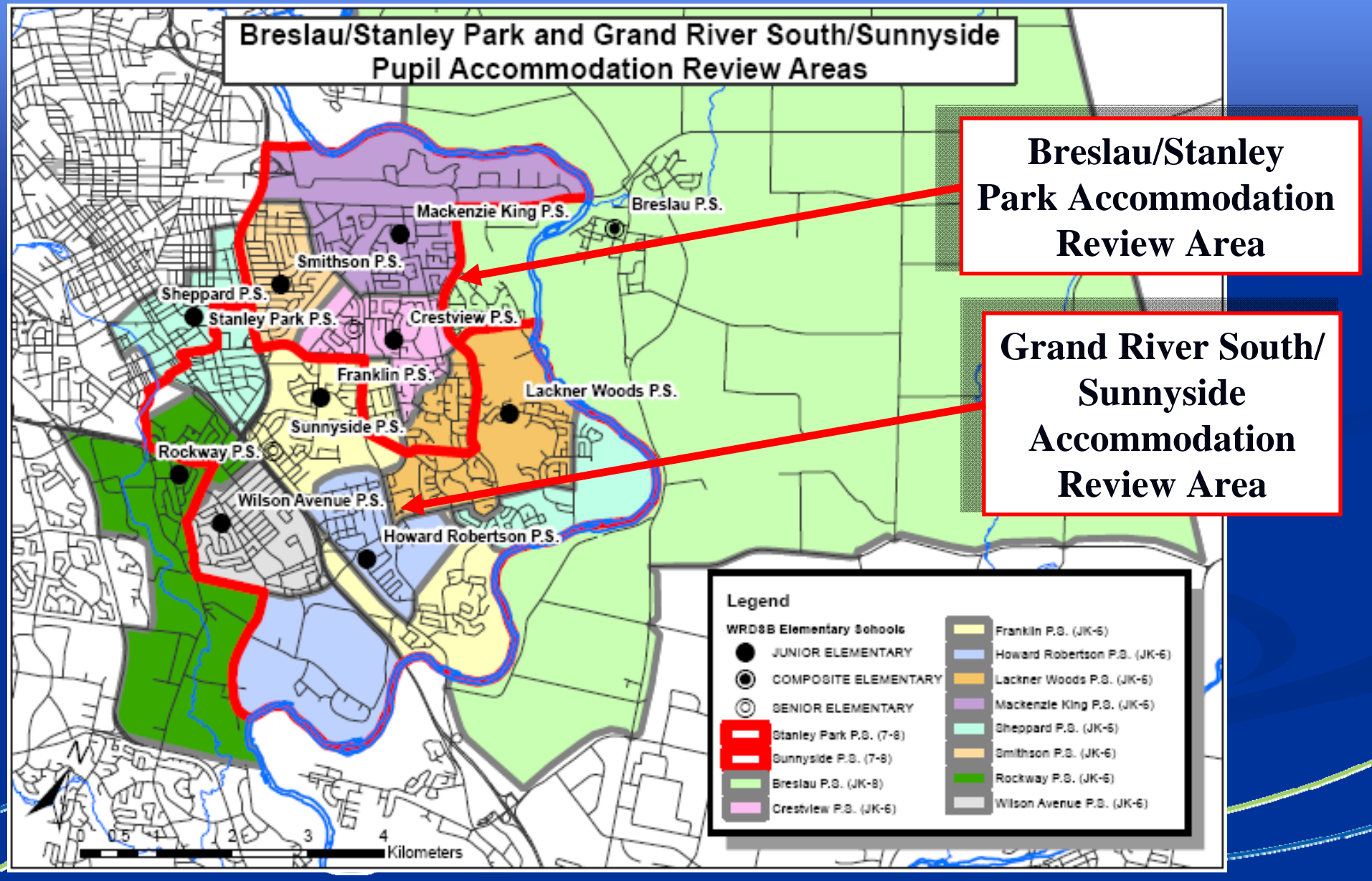
## 2. Accommodation Review Process

### Accommodation Review

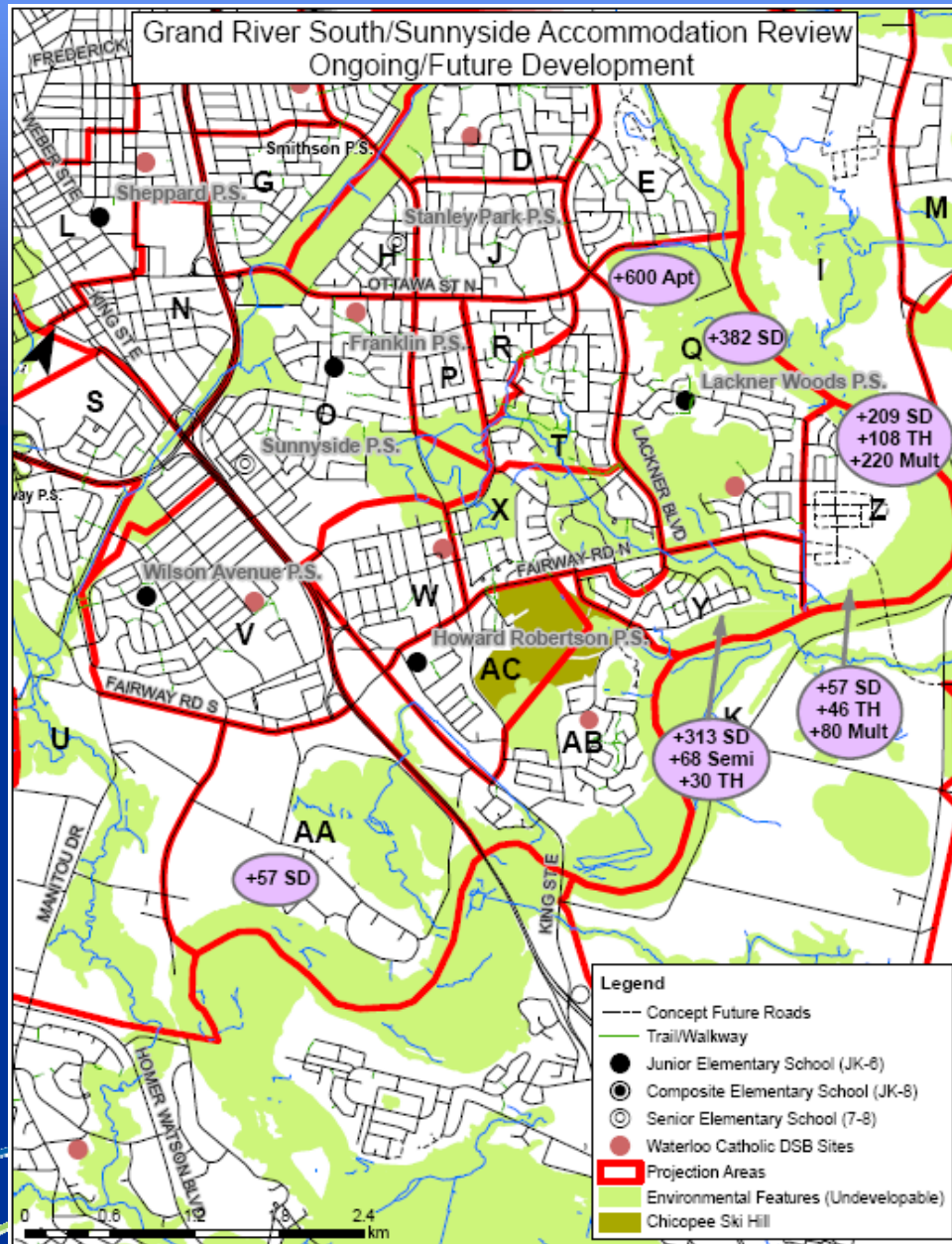
- Led by an Accommodation Review Committee (ARC)
- Could result in
  - Boundary changes
  - Program changes
  - Construction of new facility
  - **School closure or consolidation**



## 2. Accommodation Review Process



## 2. Issues (why are we here?)



- Localized residential development putting pressure on a few facilities
- Lower/declining enrolment in other areas leaving facilities with surplus space



## 2. Accommodation Review Process

### The ARC consists of:

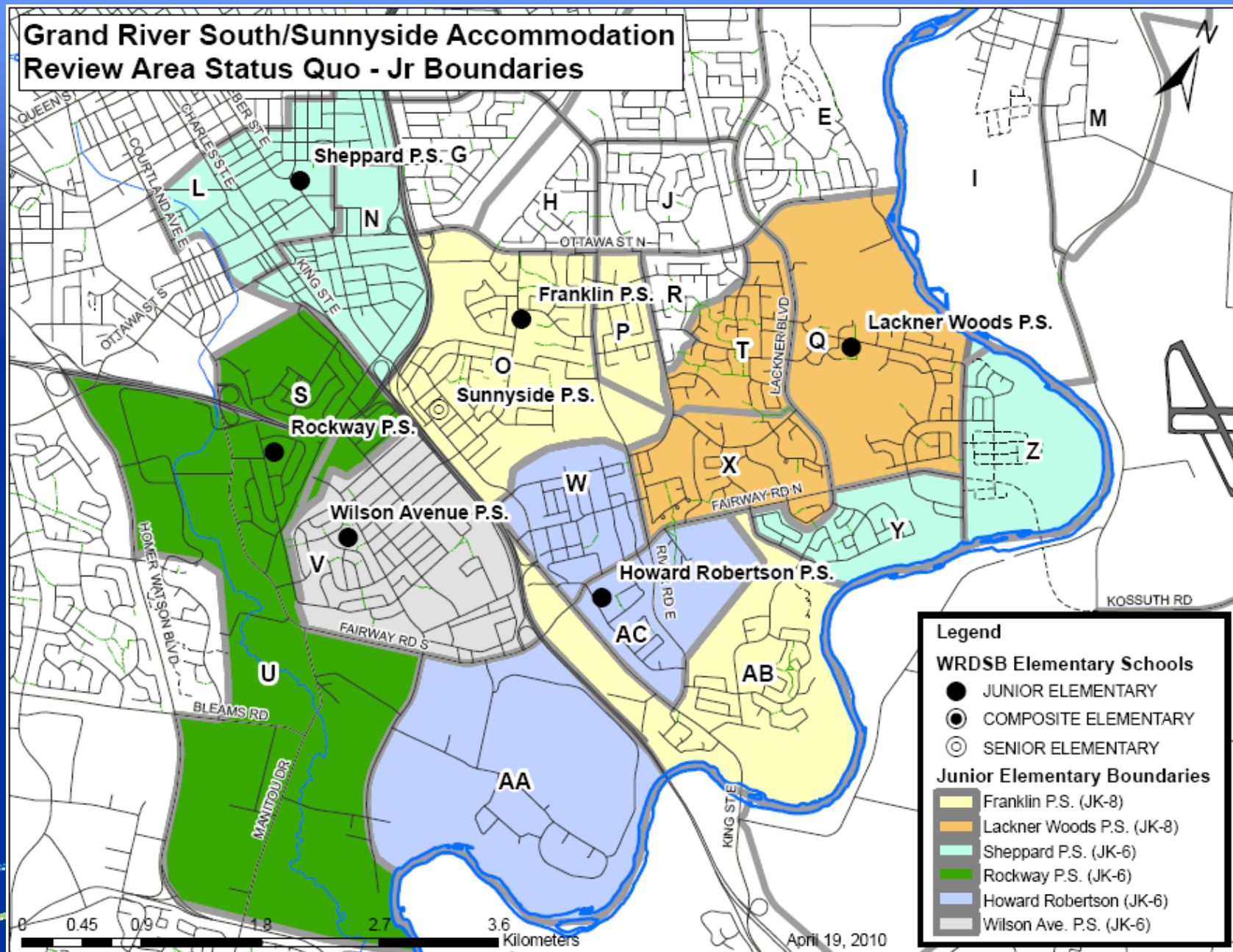
- 2 parents from each school community
- The principal from each school
- The school area superintendent(s)
- WRDSB Facilities/Planning Staff
- Study area municipal representation
  - City of Kitchener
- Up to 2 community representatives



### 3. Draft Review Objectives

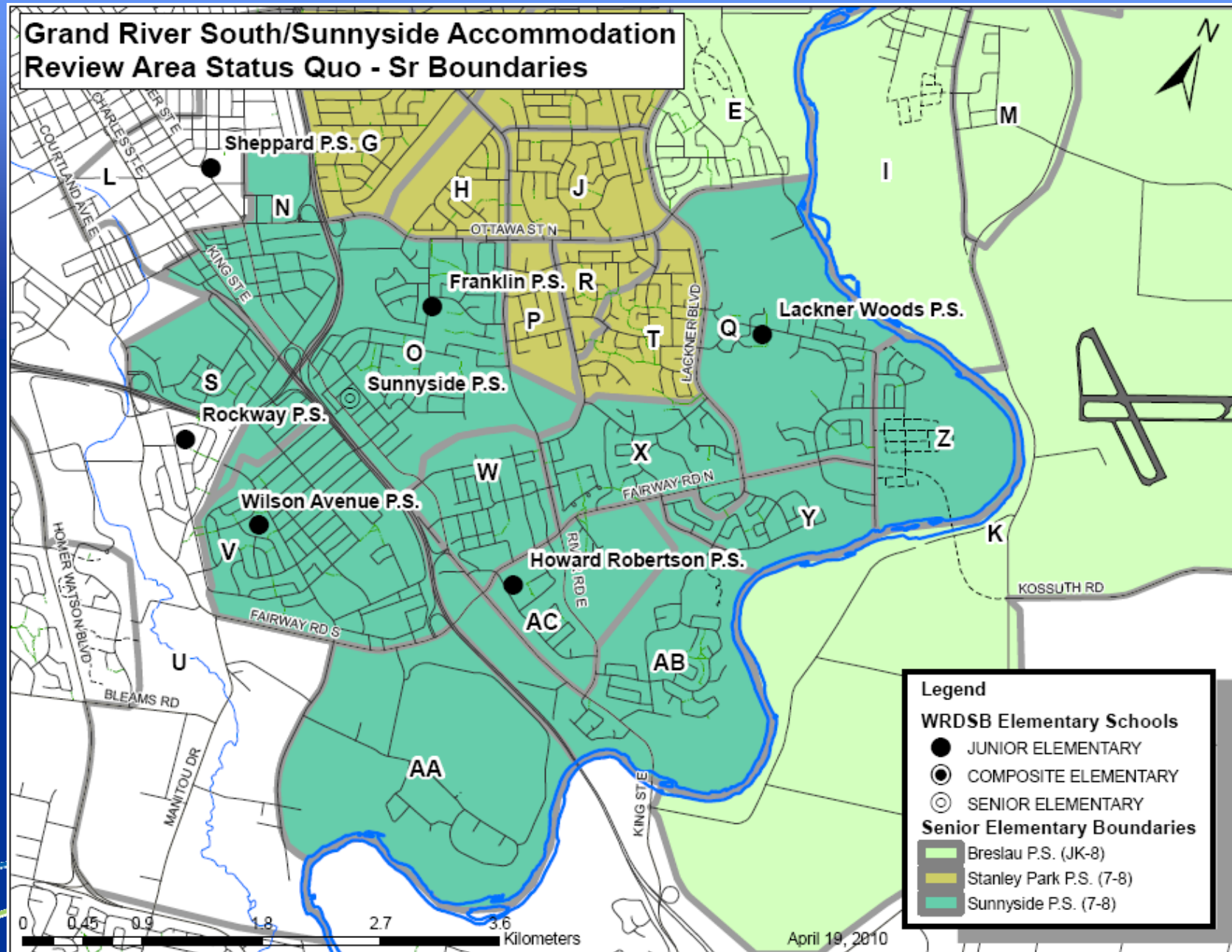
- Provide current and future students in the review area with equitable program opportunities to ensure their success by:
  - Having regard for the Good Schools Standing Committee guiding principles on school size
  - Reviewing elementary school organizations (i.e. JK-6, 7-8, JK-8)
  - Recognizing the distribution of Special Education, French Immersion and English as a Second Language programs
- Support the optimal use of facilities, capital and operating resources through the consideration of:
  - School location
    - Recognize the relationship/identity of community to local elementary school
    - Minimize transportation costs in the long-term by maximizing the number of students within walking distance of a school
  - Facility amenities and condition
    - Priorities for physical accessibility of facilities by the Accessibility Committee
    - Site
    - Safety and security
- Develop a solution that is long-term (approximately 10 years) by taking into consideration:
  - Consistency of feeds to senior elementary and secondary school programs
  - Future development plans and demographic shifts
- Consider student transitions

## 4. Scenarios – Status Quo





## 4. Scenarios – Status Quo



## 4. Scenarios – Status Quo

## Scenarios – Status Quo

### Description

- New residential development in the area around Lackner Woods P.S. continues to put pressure on the facility. Enrolment projected to exceed school size guidelines of the Good Schools Standing Committee.
- Sheppard P.S. also experiences enrolment pressure as it is a holding school for new residential development in the Fairway Rd./Old Zeller Dr. area. Enrolment projected to exceed school size guidelines for a JK-6 facility.
- Sunnyside P.S. also experiences some enrolment pressure as the congregated 7-8 school for the whole area. Enrolment exceeds school size guidelines of the Good Schools Standing Committee.
- Lackner Woods P.S. and Franklin P.S. continue to feed both Stanley Park P.S. and Sunnyside P.S. for the 7-8 program.

School	Built Capacity	2010				2015			2019		
		Total	FTE	%	SR	Total	%	SR	Total	%	SR
Lackner Woods P.S.	368	588	503	137		691	188		624	170	
Franklin P.S.	582	594	594	102		559	96		536	92	
Sheppard P.S.	429	384	331	77		645	150		564	131	
Howard Robertson P.S.	526	382	382	73		403	77		423	80	
Sunnyside P.S.	423	500	500	118	500	516	122	516	602	142	602
Wilson Ave. P.S.	428	437	385	90		443	104		439	103	
Rockway P.S.	254	238	210	83		247	97		243	96	
<b>Total</b>	<b>3010</b>	<b>3123</b>	<b>2904</b>		<b>500</b>	<b>3504</b>		<b>516</b>	<b>3431</b>		<b>602</b>

% refers to percentage capacity (Total bodies/capacity)

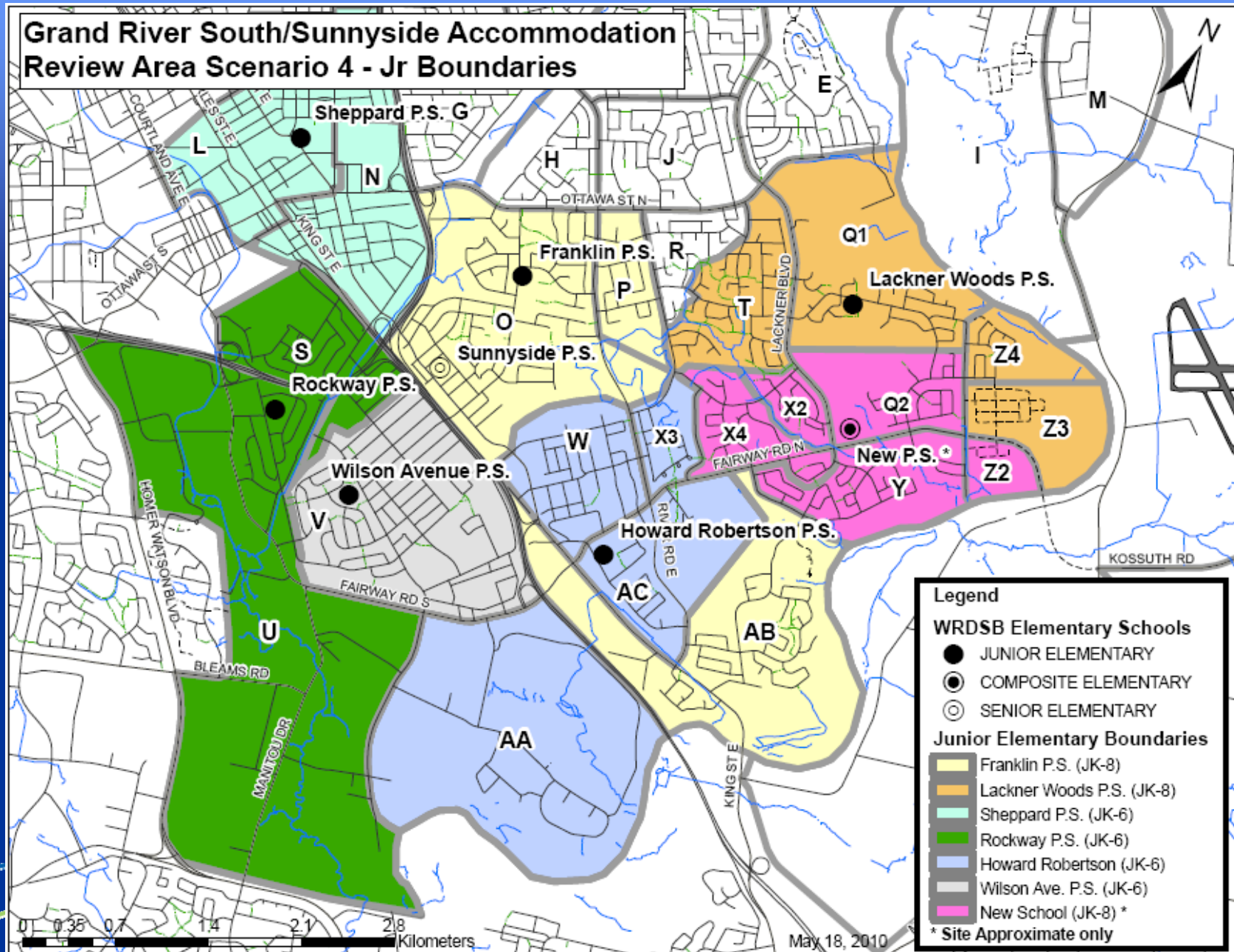
SR refers to total enrolment of the senior elementary program (7-8)



District School Board

## 4. Scenarios – Scenario 4

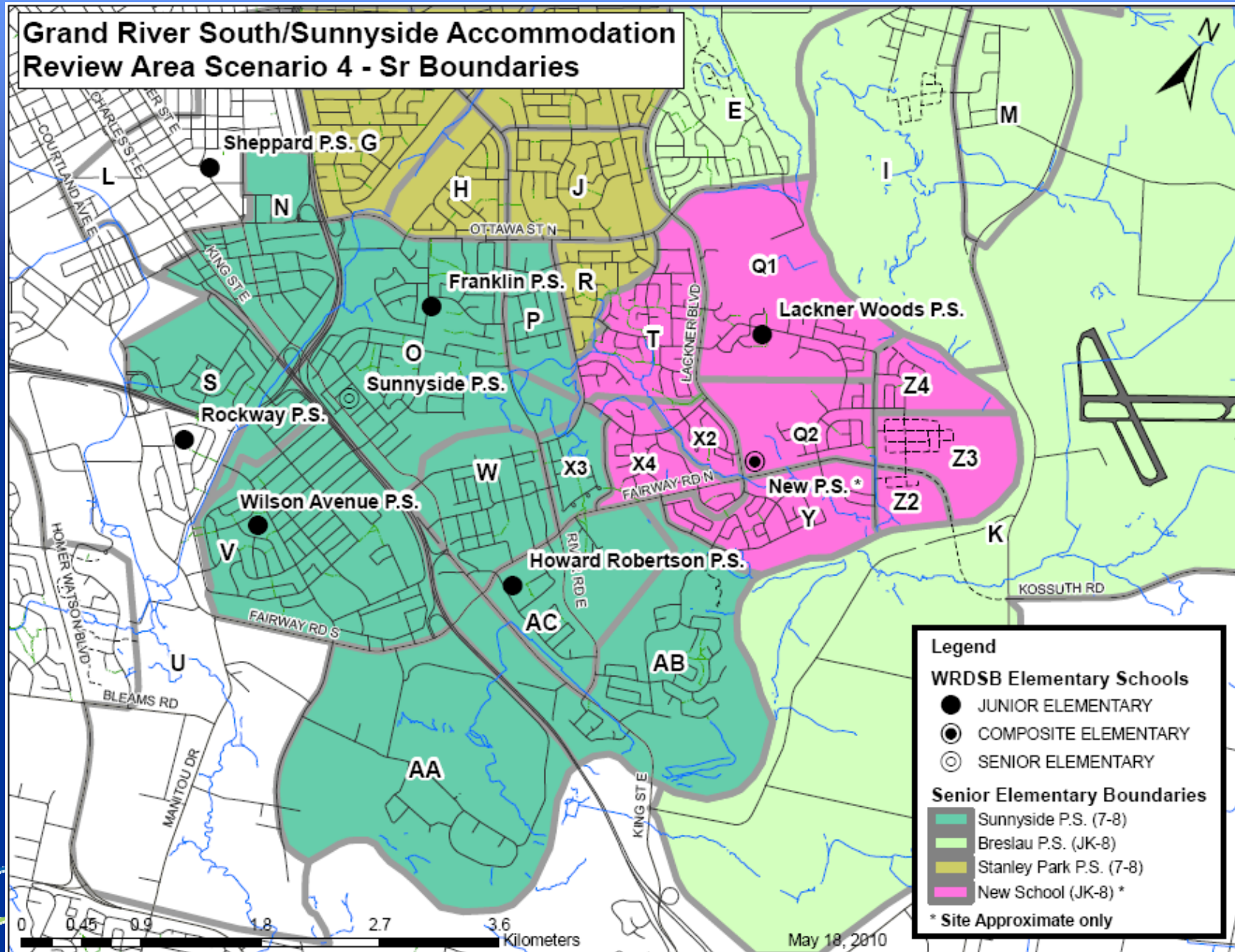
## Scenarios – Scenario 1





## 4. Scenarios – Scenario 1

## Scenarios – Scenario 1



## 4. Scenarios – Scenario 4

### Description

- Additional JK-8 accommodation constructed in the Lackner Blvd./Fairway Rd. Area. Receives Areas Y , and Z2 from Sheppard P.S., and Areas Q2, X2, and X4 from Lackner Woods P.S.
- Lackner Woods P.S. receives Areas Z3 and Z4 from Sheppard P.S.
- Howard Robertson P.S. receives Area X3 from Lackner Woods P.S.
- New JK-8 facility provides the Sr. 7-8 program for its own catchment as well as Lackner Woods P.S.
- Sunnyside P.S. remains open but gives up Areas T, Q1, Q2, X2, X4, Y, Z2, Z3, and Z4 to the new school for the 7-8 program.

### Opportunities

- Enrolment at Lackner Woods P.S. matched to built capacity and within size guidelines recommended by Good School Standing Committee.
- Sunnyside P.S. within size guidelines.
- Split feeds from Franklin P.S. and Lackner Woods P.S. eliminated.

## Scenarios – Scenario 1

### Issues

- Sheppard P.S. enrolment slightly below size guidelines and facility underutilized.

School	Built Capacity	2010				2015			2019		
		Total	FTE	%	SR	Total	%	SR	Total	%	SR
Lackner Woods P.S.	368	210	178	57		446	121		372	101	
Franklin P.S.	582	594	535	102		559	96		536	92	
Sheppard P.S.	429	306	271	71		295	69		270	63	
Howard Robertson P.S.	526	441	388	84		479	91		498	95	
Sunnyside P.S.	423	414	414	98	414	353	83	353	368	87	368
Wilson Ave. P.S.	428	437	385	102		443	104		439	103	
Rockway P.S.	254	238	210	94		247	97		243	96	
New School	???	528	468		140	677		191	688		249
<b>Total</b>	<b>3010</b>	<b>3168</b>	<b>2847</b>		<b>554</b>	<b>3499</b>		<b>544</b>	<b>3414</b>		<b>617</b>

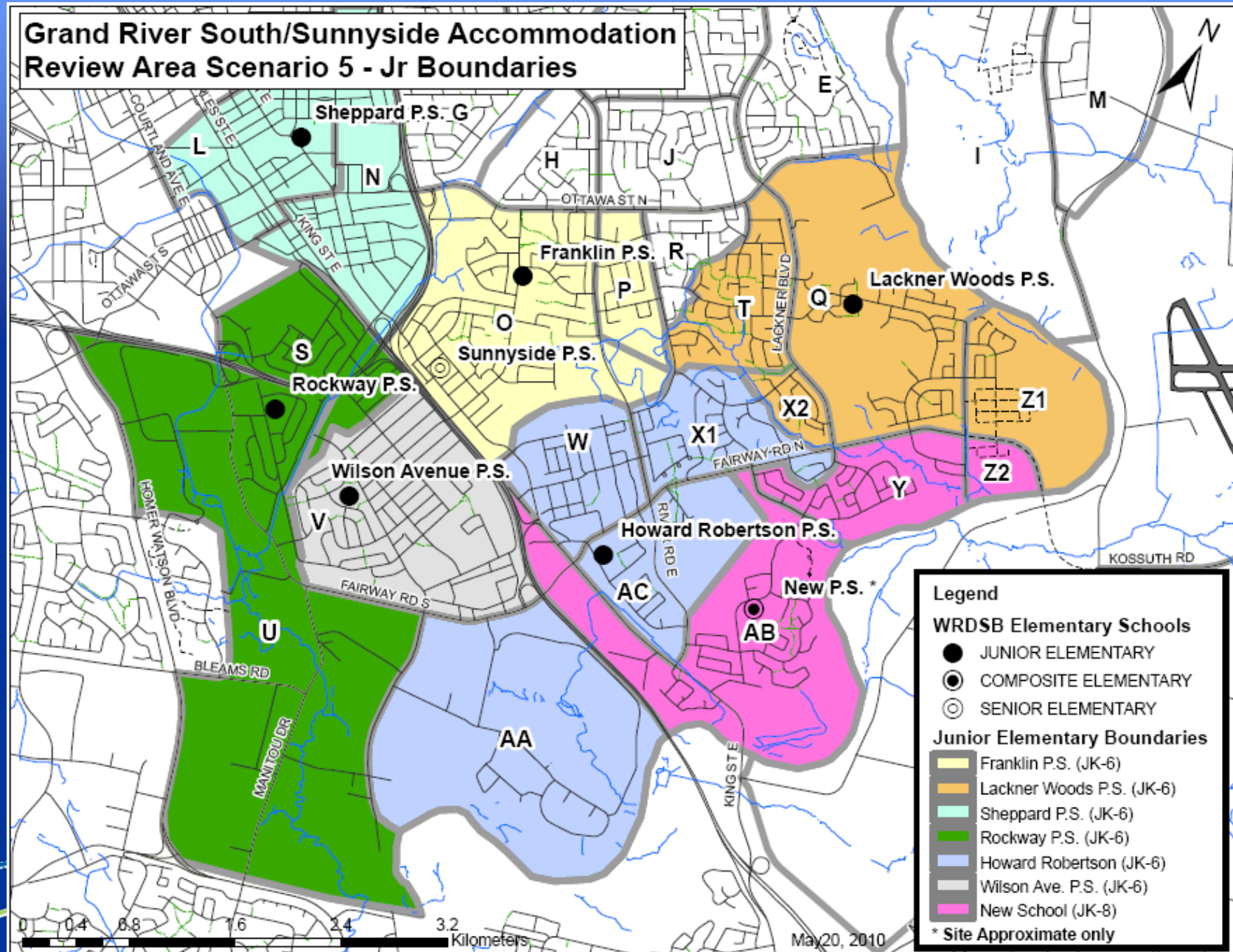
% refers to percentage capacity (Total bodies/capacity)

SR refers to total enrolment of the senior elementary program (7-8)



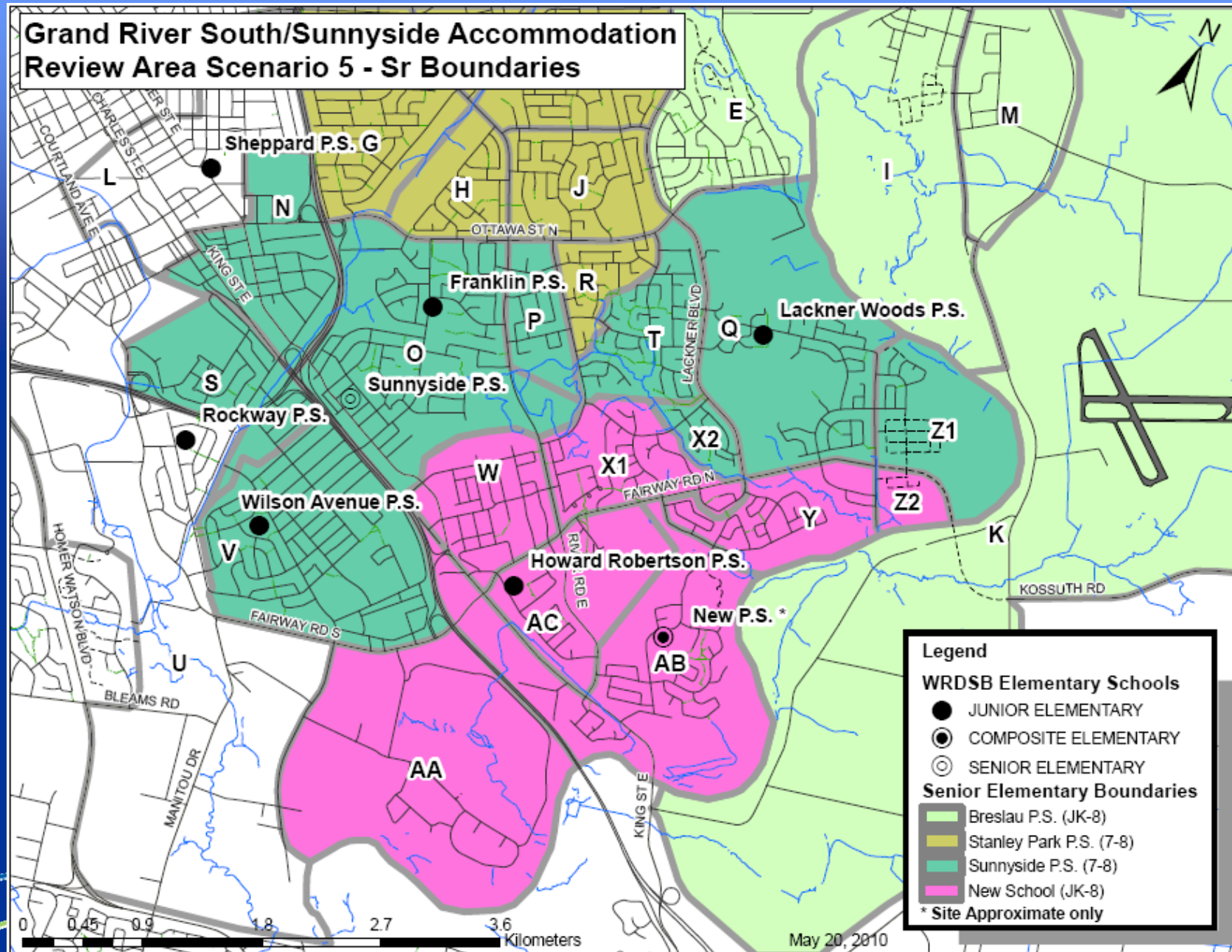
## 4. Scenarios – Scenario 5

## Scenarios – Scenario 2



## 4. Scenarios – Scenario 5

## Scenarios – Scenario 2



## 4. Scenarios – Scenario 5

### Description

- Additional JK-8 accommodation constructed in Morrison Rd. Area . Receives Area Y , and Area Z2 from Sheppard P.S., and Area AB from Franklin P.S.
- Lackner Woods P.S. receives Area Z1 from Sheppard P.S.
- Howard Robertson P.S. receives Area X1 from Lackner Woods P.S.
- New JK-8 provides the Sr. 7-8 program for its own catchment as well as Howard Robertson P.S.
- Sunnyside P.S. continues to provide the Sr. 7-8 program for Wilson Ave., Franklin, Lackner Woods and portions of Rockway and Sheppard public schools. Receives Areas P and T from Stanley Park eliminating the split feeds from Franklin P.S. and Lackner Woods P.S.

### Opportunities

- Split feeds from Franklin P.S. and Lackner Woods P.S. eliminated.
- Sunnyside P.S. within size guidelines.

## Scenarios – Scenario 2

### Issues

- Sheppard P.S. enrolment slightly below size guidelines and underutilized.
- Enrolment at Lackner Woods P.S. exceeds size guidelines recommended by Good School Standing Committee (for JK-6).
- Franklin P.S. underutilized.

School	Built Capacity	2010				2015			2019		
		Total	FTE	%	SR	Total	%	SR	Total	%	SR
Lackner Woods P.S.	368	368	309	100		628	171		545	148	
Franklin P.S.	582	454	410	78		440	76		428	74	
Sheppard P.S.	429	306	271	71		295	69		270	63	
Howard Robertson P.S.	526	563	497	107		582	111		604	115	
Sunnyside P.S.	423	320	320	76	320	359	85	359	416	98	416
Wilson Ave. P.S.	428	437	385	102		443	104		439	103	
Rockway P.S.	254	238	210	94		247	97		243	96	
New School	???	490	455		235	549		207	532		237
<b>Total</b>	<b>3010</b>	<b>3176</b>	<b>2855</b>		<b>555</b>	<b>3543</b>		<b>566</b>	<b>3477</b>		<b>653</b>

% refers to percentage capacity (Total bodies/capacity)

SR refers to total enrolment of the senior elementary program (7-8)

## 5. Break out Sessions



Waterloo Region  
District School Board



## 6. General Session

# Questions and Answers

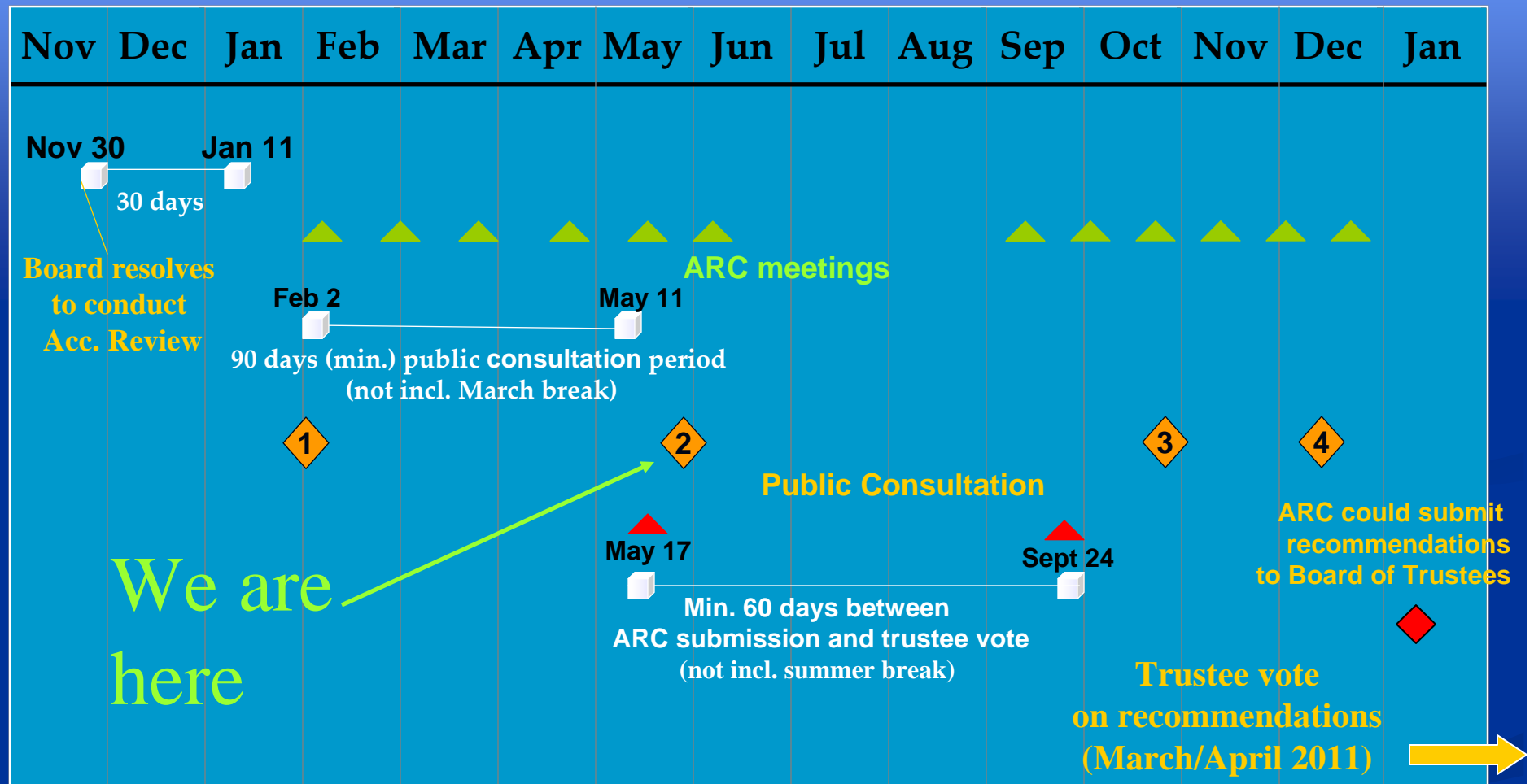


Waterloo Region  
District School Board



# 7. Next Steps

## Breslau/Stanley Park Accommodation Review Proposed Timing



**November 30, 2009 – January 11, 2010**

30 day minimum period between Board announcement of Accommodation Review, and first public consultation (not incl. winter break).

**February 2, 2010– May 11, 2010**

Public consultation period. Minimum 90 days (not incl.. March break). Minimum 4 public meetings.

**May 17, 2010- September 24, 2010**

Minimum 60 day period (not incl. summer break) between Accommodation Review Committee's (ARC) submission of Accommodation Report (AR) and meeting where Trustees vote on recommendation.

## Contact Us

- Website: [www.wrdsb.ca](http://www.wrdsb.ca)
  - About
    - Planning
      - Accommodation Reviews
        - Grand River South/Sunnyside Elementary Schools Accommodation Review

■ E-mail: [boundaryfeedback@wrdsb.on.ca](mailto:boundaryfeedback@wrdsb.on.ca)

■ Phone: 519-570-0003 ext. 4419

