

WEST GALT

Elementary Schools Accommodation Review

Community Information Session

October 25, 2012

Highland P.S. 7:00 p.m.- 8:30 p.m.



Agenda

West Galt

Elementary Schools Accommodation Review

Community Information Session

7:00 p.m. - Open House – View Display Boards

7:15 p.m. – Presentation

8:00 p.m. – Questions & Answers



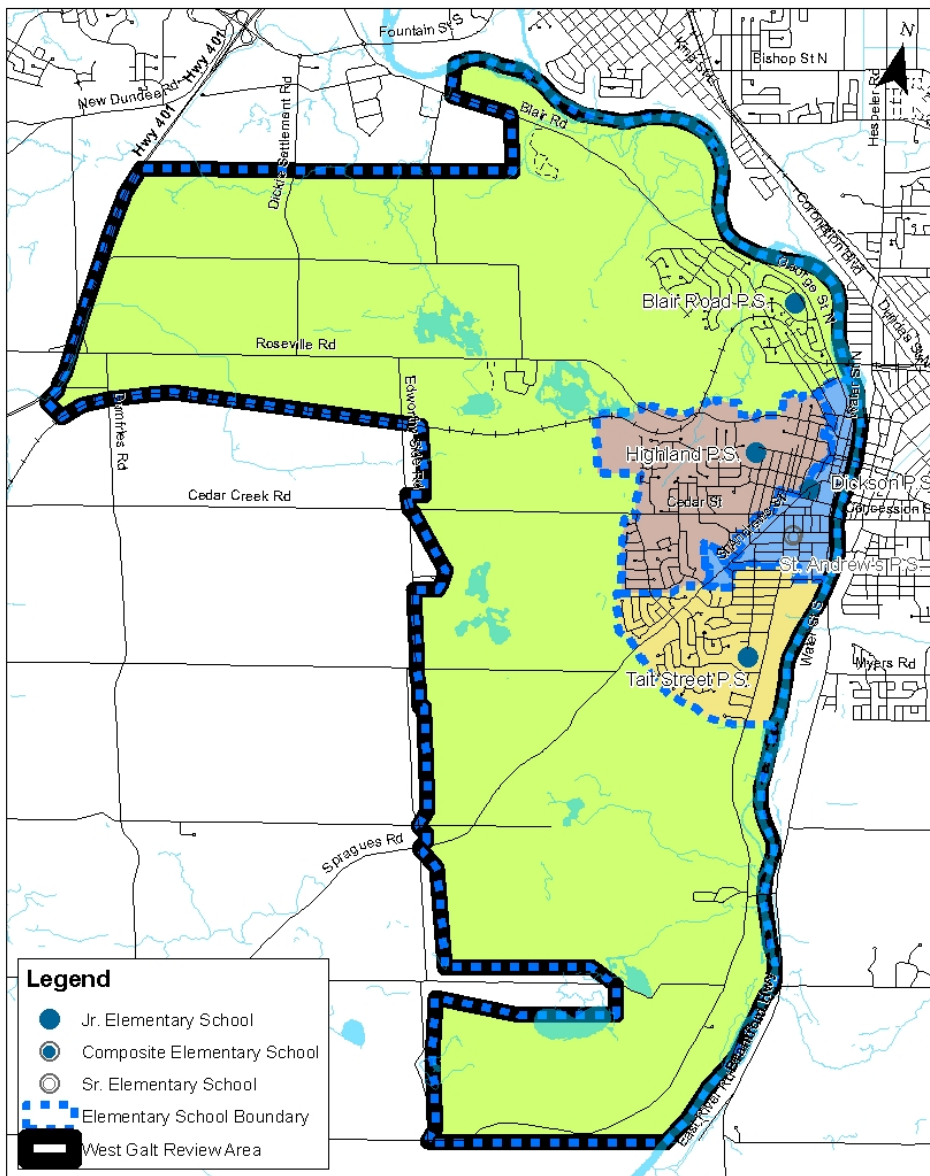


Review Area

- The West Galt Review Area includes:
 - Blair Road P.S. (JK-6)
 - Dickson P.S. (JK-5)
 - Highland P.S. (JK-5)
 - St. Andrew's P.S. (6-8)
 - Tait Street P.S. (JK-6)



West Galt Review Area





West Galt ARC Recommendations

1. To close Dickson Public School
2. To construct a new JK-6 facility
3. To modify the boundary for Blair Road Public School
4. To modify the boundary and add Gr. 6 to Highland Public School
5. To modify the boundary for Tait Street Pubic School
6. To offer only Gr. 7-8 at St Andrew's Public School





Analysis

- ARC Scenario 23 is based on ideal long-term solution
- Redistribution of accommodation within the review area
- Adds a new facility, increasing number of students within walking distance of a school





ARC Recommendation #1: Close Dickson P.S.

- Operation of school with 115 students
- 2012 Ontario Budget highlights need to close/consolidate underused/small urban schools
- ARC closure timeframe is dependent upon funding for new school





ARC Recommendation #2: Construct new JK-6 facility

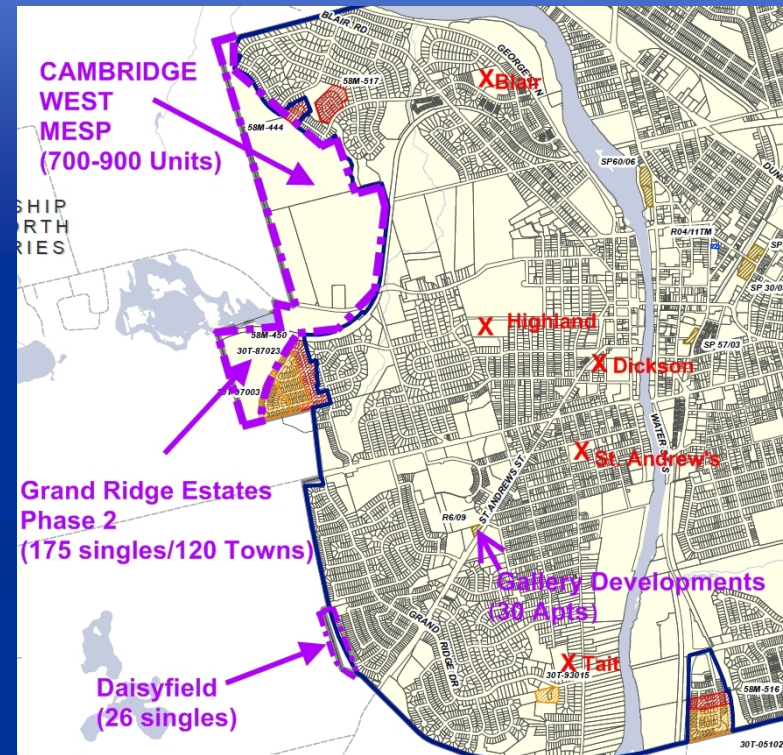
- Maximizes number of walkers in study area
- Reduces pressure on Highland P.S.
- Replaces older facilities at Dickson P.S. and provides new accommodation in growth area of West Galt
- Case for new school in West Galt ranked 12th in May 2012 Capital Priorities submission
- Likely a significant wait for New West Galt School to warrant provincial funding
- All other ARC recommendations will be held up by timing of funding for new school





ARC Recommendation #3: Modify Blair Road P.S. Boundary

- Maintains size of Blair Road P.S. at level that does not jeopardize case for future new school in MESP Area
- Aligns catchment areas better for Township students attending Blair Road P.S. and Tait Street P.S.
- Modified boundary includes small portion of Dickson P.S.
- 80% utilization weakens case for proposed new school





ARC Recommendation #4: Gr. 6 and modify boundary for Highland P.S.

- Reduction of Highland P.S. attendance area to relieve enrolment pressure
- Make room for Dickson P.S. attendance area
- Make room for Grade 6 to be added to Highland P.S. (in future)
- Continued enrolment pressure until an additional PFI location is established





ARC Recommendation #5: Modify boundary for Tait Street P.S.

- Improves enrolment numbers at Tait Street P.S.
- Aligns catchment areas better for Township students attending Blair Road P.S. and Tait Street P.S.
- Modified boundary includes some Dickson P.S. students





ARC Recommendation #6: Gr. 7-8 only at St. Andrew's P.S.

- Consistent entry point to St Andrew's P.S.
- Frees up space for growth from MESP Area if required
- Occupancy below 80% in scenario weakens case for proposed new school





Discussion

- Ministry criteria for new accommodation difficult to meet under proposed ARC scenario
- Other Board Capital Priorities could leave new West Galt School delayed for years
- Urgent crowding issues at Highland P.S. need more immediate attention
- Intent and spirit of ARC scenario can be implemented without new school





Alternatives

- Two alternative solutions identified which assume no Provincial funding is available
- Alternative solutions can implement the majority and spirit of the ARC recommendations in a timely manner
- Addition to an existing school without reliance on additional Capital Funding from Province



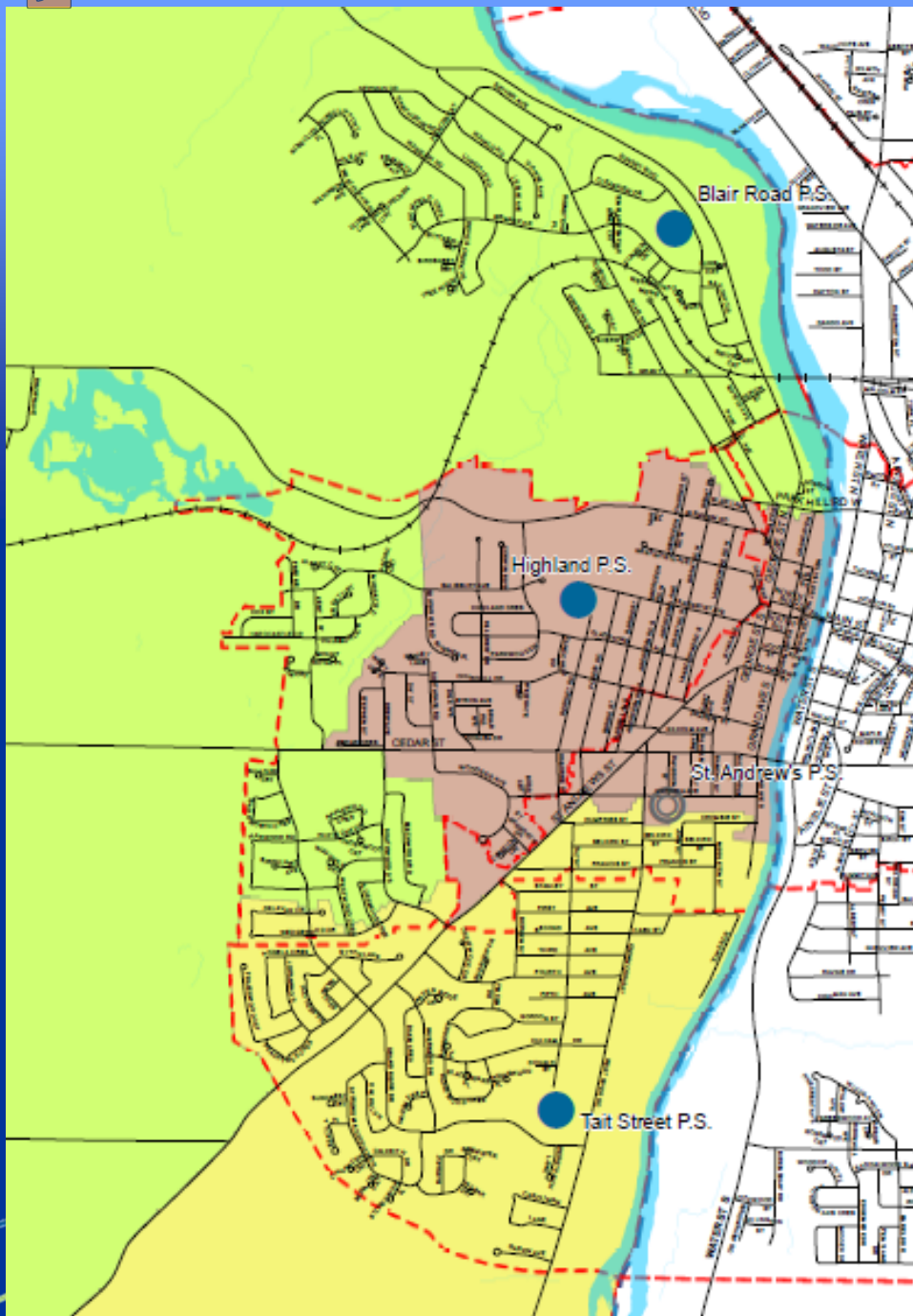


Administration Scenario A

Common Recommended Action	ARC	Administration
	Scenario 23	Scenario A
1. Close Dickson P.S.	x	x
3. Modify the boundary for Blair Road P.S.	x	x
4. Modify the boundary and add Gr. 6 to Highland P.S.	x	x
5. Modify the boundary for Tait Street P.S.	x	x
6. Offer only Gr. 7 & Gr. 8 at St. Andrew's P.S.	x	x

Recommended actions based on differing funding assumptions	ARC	Administration
	Scenario 23	Scenario A
2. Construct a new JK-6 facility	x	
French Immersion at Blair Road P.S.	Suggested	x
Addition at Blair Road P.S.		x

Scenario A



Scenario A - 2013 Implementation

School	Capacity	Estimated Total Enrolment by Year					
		2013/14	2014/15	2015/16	2016/17	2017/18	2018/19
Blair Road PS	478	365	401	425	460	475	473
Highland PS	464	483	469	449	503	499	491
St. Andrew's PS	401	419	377	370	308	317	346
Tait Street PS	435	363	368	370	389	386	392
Total	1778	1630	1615	1614	1660	1677	1702

Scenario A - 2014 Implementation

School	Capacity	Estimated Total Enrolment by Year					
		2013/14	2014/15	2015/16	2016/17	2017/18	2018/19
Blair Road PS	478	272	356	393	430	458	473
Dickson PS	0	88	0	0	0	0	0
Highland PS	464	546	501	481	461	436	491
St. Andrew's PS	401	426	390	370	380	397	346
Tait Street PS	435	298	368	370	389	386	392
Total	1778	1630	1615	1614	1660	1677	1702



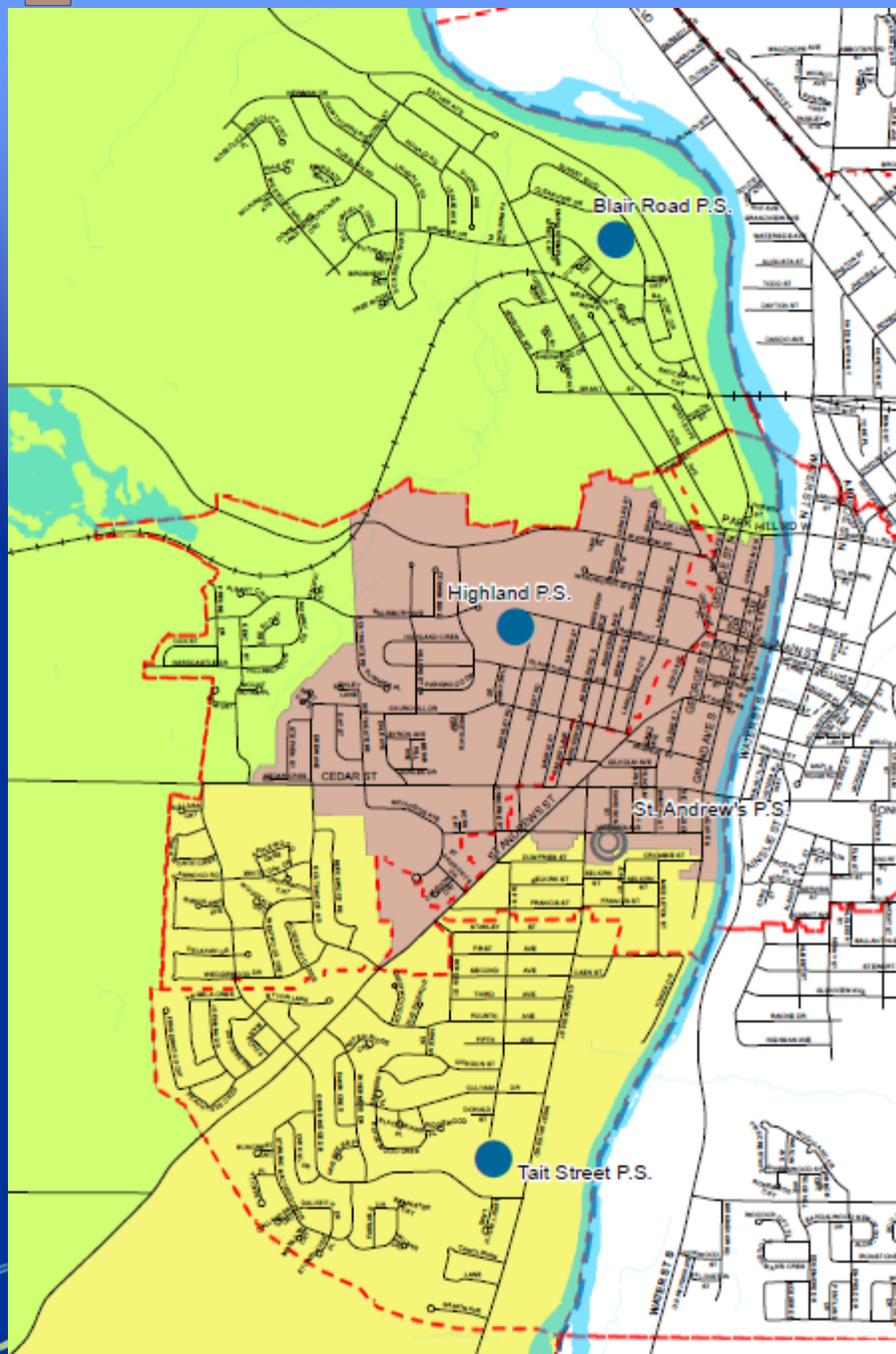
Administration Scenario B

Common Recommended Action	ARC	Administration
	Scenario 23	Scenario A
1. Close Dickson P.S.	x	x
3. Modify the boundary for Blair Road P.S.	x	x
4. Modify the boundary and add Gr. 6 to Highland P.S.	x	x
5. Modify the boundary for Tait Street P.S.	x	x
6. Offer only Gr. 7 & Gr. 8 at St. Andrew's P.S.	x	x
Recommended actions based on differing funding assumptions	ARC	Administration
	Scenario 23	Scenario A
2. Construct a new JK-6 facility	x	
French Immersion at Tait Street P.S.	Suggested	x
Addition at Tait Street P.S.		x



Scenario B

– Boundary Option 1



Scenario B - Boundary Option 1, 2013 Implementation

School	Capacity	Estimated Total Enrolment by Year					
		2013/14	2014/15	2015/16	2016/17	2017/18	2018/19
Blair Road PS	294	259	282	297	324	337	343
Highland PS	464	469	456	440	503	511	506
St. Andrew's PS	401	430	377	370	308	317	346
Tait Street PS	507	472	500	507	525	513	507
Total	1666	1630	1615	1614	1660	1678	1702

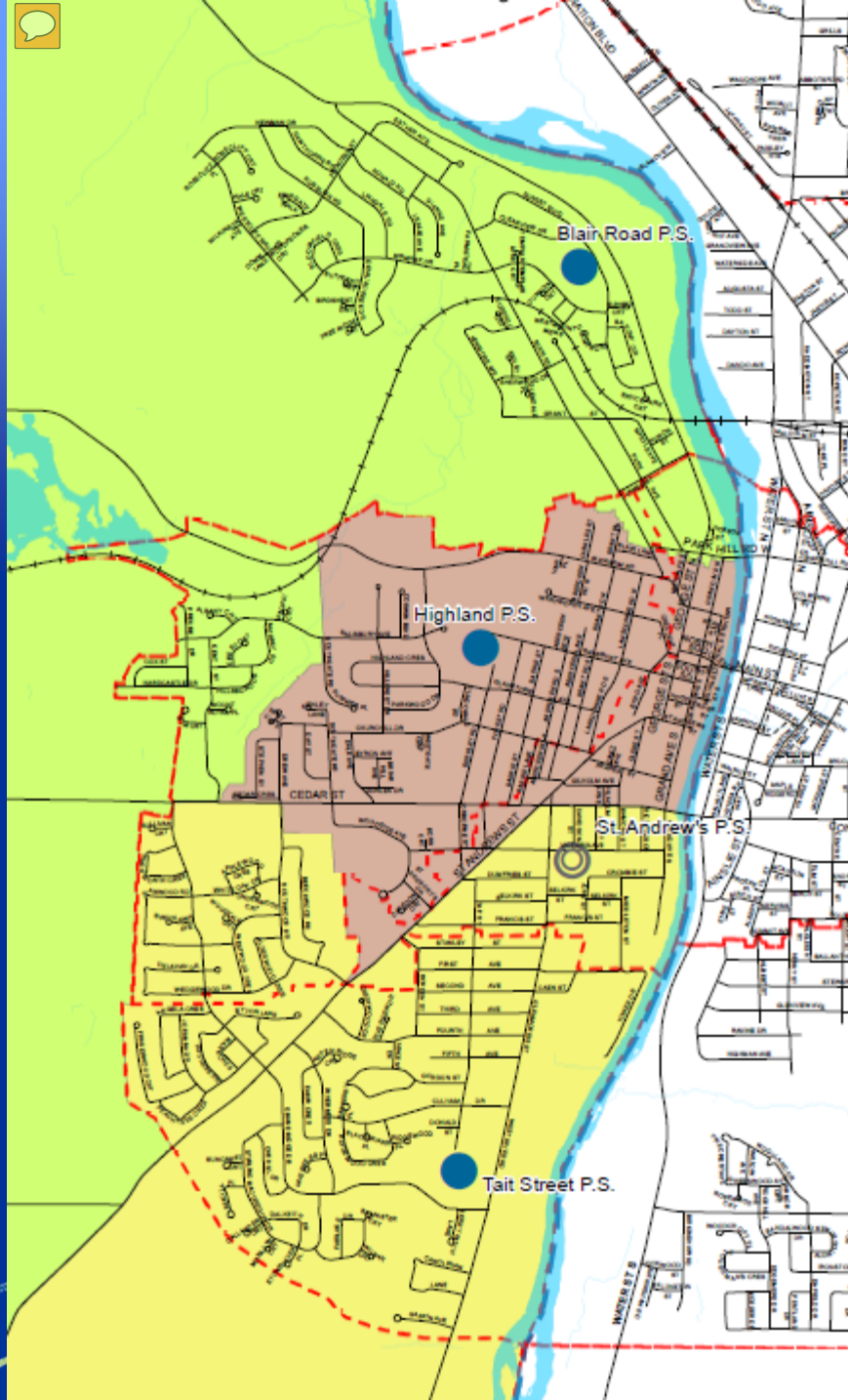
Scenario B - Boundary Option 1, 2014 Implementation

School	Capacity	Estimated Total Enrolment by Year					
		2013/14	2014/15	2015/16	2016/17	2017/18	2018/19
Blair Road PS	294	243	271	297	324	337	343
Dickson PS	0	88	0	0	0	0	0
Highland PS	464	542	512	489	473	448	508
St. Andrew's PS	401	426	415	372	382	400	346
Tait Street PS	507	331	417	456	481	492	505
Total	1666	1630	1615	1614	1660	1677	1702



Scenario B

– Boundary Option 2



Scenario B - Boundary Option 2, 2013 Implementation

School	Capacity	Estimated Total Enrolment by Year					
		2013/14	2014/15	2015/16	2016/17	2017/18	2018/19
Blair Road PS	294	259	282	297	324	337	343
Highland PS	464	460	439	416	473	476	468
St. Andrew's PS	401	434	377	370	308	317	346
Tait Street PS	507	477	517	531	555	547	545
Total	1666	1630	1615	1614	1660	1677	1702

Scenario B - Boundary Option 2, 2014 Implementation

School	Capacity	Estimated Total Enrolment by Year					
		2013/14	2014/15	2015/16	2016/17	2017/18	2018/19
Blair Road PS	294	243	271	297	324	337	343
Dickson PS	0	88	0	0	0	0	0
Highland PS	464	536	484	466	438	412	468
St. Andrew's PS	401	426	407	370	380	397	346
Tait Street PS	507	337	453	490	518	531	545
Total	1666	1630	1615	1623	1660	1677	1702



Summary

- Administration Alternative Solutions are variations to the ARC recommendations
- Remove uncertainty associated with Ministry Capital Funding Allocations
- Board in full control of a planned timeline for implementation of accommodation changes
- Small addition of capacity to an existing school could be funded from Proceeds of Disposition Reserve





Next Steps

- Monday November 12, 2012 - Final Report to be submitted to Trustees at a Committee of the Whole meeting
 - Report posted on Board's website on Friday Nov. 9/12





Contact Information

- Website: www.wrdsb.ca
 - Accommodation Reviews
 - West Galt
- E-mail: boundaryfeedback@wrdsb.on.ca
- Phone: 519-570-0003 ext. 4419



Thank you!

Questions or Comments?



