

Woolwich/Wellesley Townships

Elementary Schools Pupil Accommodation Review **Accommodation Review Committee Meeting #12**

May 24, 2012

Floradale P.S. Library 6:30 – 8:00 pm



Waterloo Region
District School Board

- 1. Welcome**
- 2. ARC Meeting # 11 – Draft Minutes**
- 3. Minutes – Three Bridges PS Community Meeting**
 - **Discussion**
 - **Impact on Scenarios**
- 4. Modified Scenarios**
 - **Next Steps (construction requirements, costing)**
- 5. Future Meeting Dates/Times**

3. Three Bridges PS Community Meeting

- Meeting held evening May 8 at Three Bridges PS
- Well attended (approximately 50 people attended, however no David Martins)
- Translator (Low German) in attendance.

Summary

- Preference to maintain status quo
- Any change (program, school boundary, school closure) would result in loss of enrolment. Loss could extend into secondary panel.
- “...you will lose 65% of your elementary students...”. No survey taken.
- Floradale PS closest to Three Bridges in terms of ‘atmosphere’.

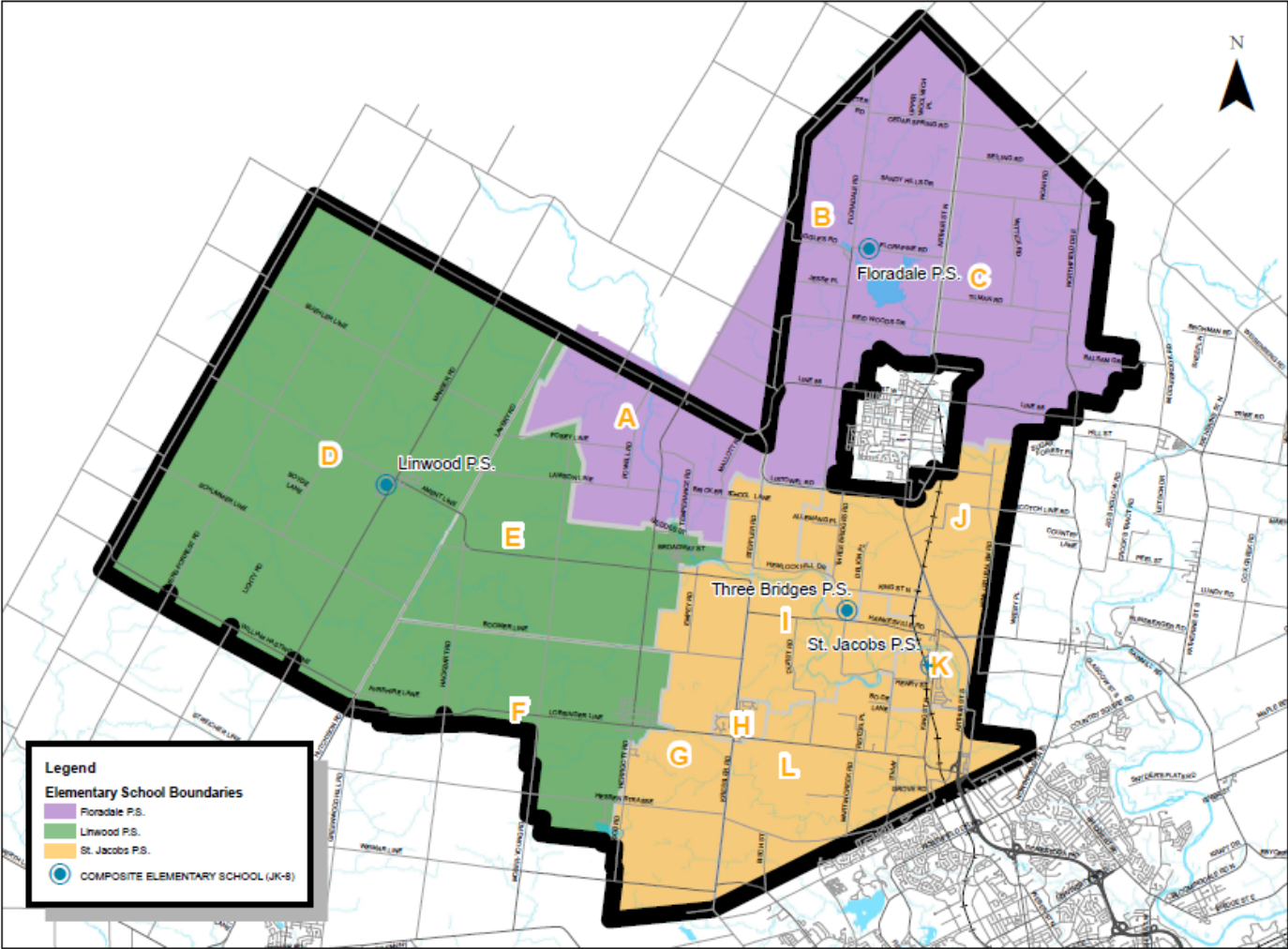
4. Modified Scenario Discussion

1. **Status Quo** ✓
2. Three Bridges Open with defined attendance area boundary
 - **Scenario 1** ✓
 - ~~Scenario 4~~
 - Scenario 8
 - Scenario 9
3. Three Bridges closed (TBD)
 - **Scenario 2** ✓
 - Scenario 3
 - ~~Scenario 5~~
 - **Scenario 6** ✓
 - Scenario 7

✓ Scenarios taken to public meeting #2

4. Modified Scenario - Review

Woolwich and Wellesley Townships Review: Status Quo



Details
No change to existing situation

STATUS QUO

School	Built Capacity	Capacity with FDK	2012			2014			2016			2018			2020		
			JK-6	7-8	Total	JK-6	7-8	Total	JK-6	7-8	Total	JK-6	7-8	Total	JK-6	7-8	Total
Floradale P.S.	322	322	189	56	245	182	58	240	177	65	242	201	41	242	212	52	264
Linwood P.S.	510	519	359	96	455	369	87	456	381	91	472	397	88	485	400	101	501
St. Jacobs P.S.	348	403	255	58	313	256	73	329	276	76	352	282	79	361	293	75	368
Three Bridges P.S.	92	92	51	25	76	67	19	86	69	22	91	70	23	93	62	28	90
Total	1272	1336	854	235	1089	874	237	1111	903	254	1157	950	231	1181	967	256	1223

4. Modified Scenario Review - Group 1 (TBR defined boundary)

Challenges

- Surplus capacity : 1123 enrolment/1336 capacity
- Inequitable access to educational amenities. Three Bridges maintains attendance based on culture.
- Small school organizations

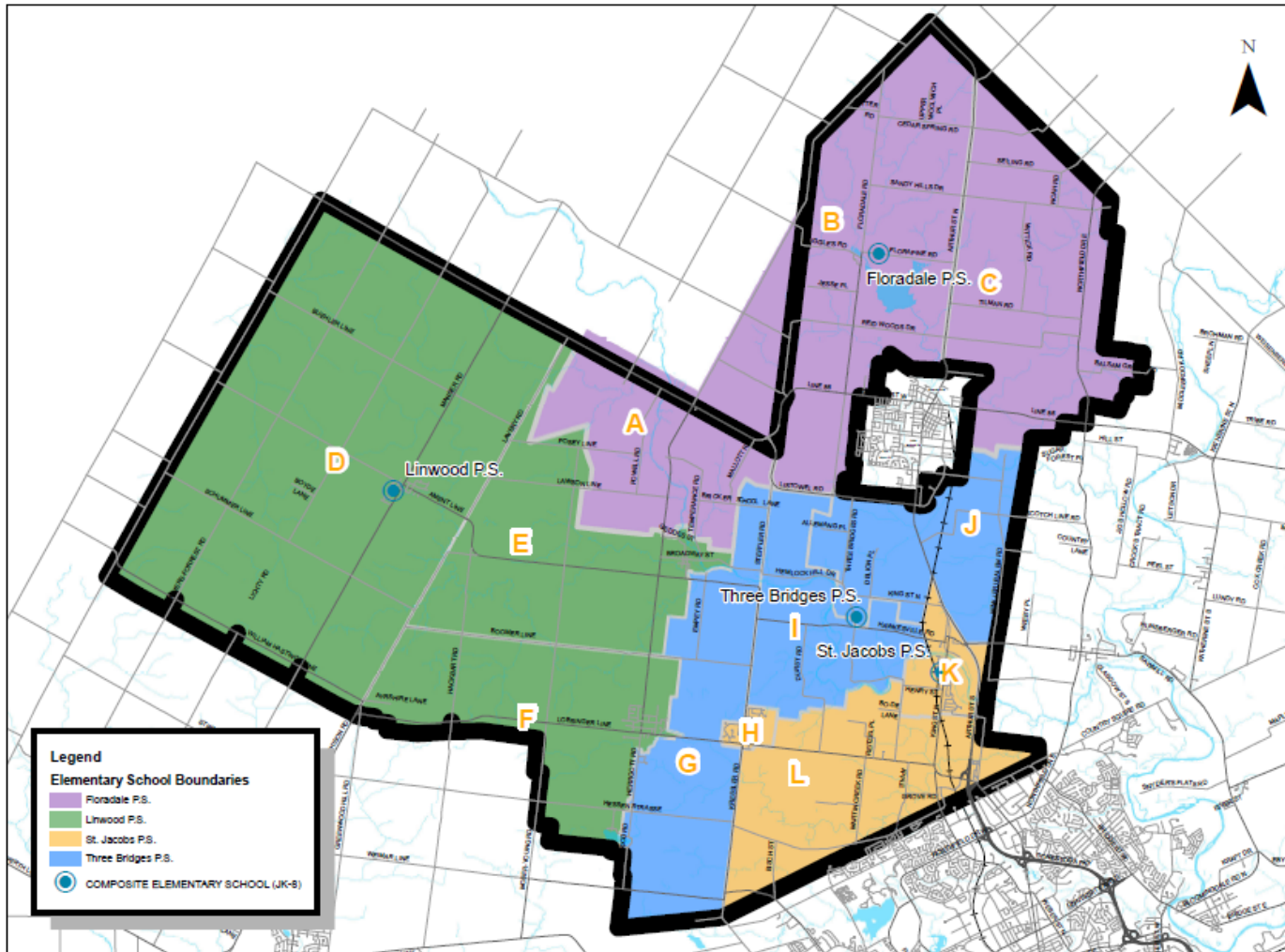
Opportunities

- Retain all enrolment

4. Modified Scenario Review - Group 1 (TBR defined boundary)

Woolwich and Wellesley Townships Review: Scenario 1

boundary



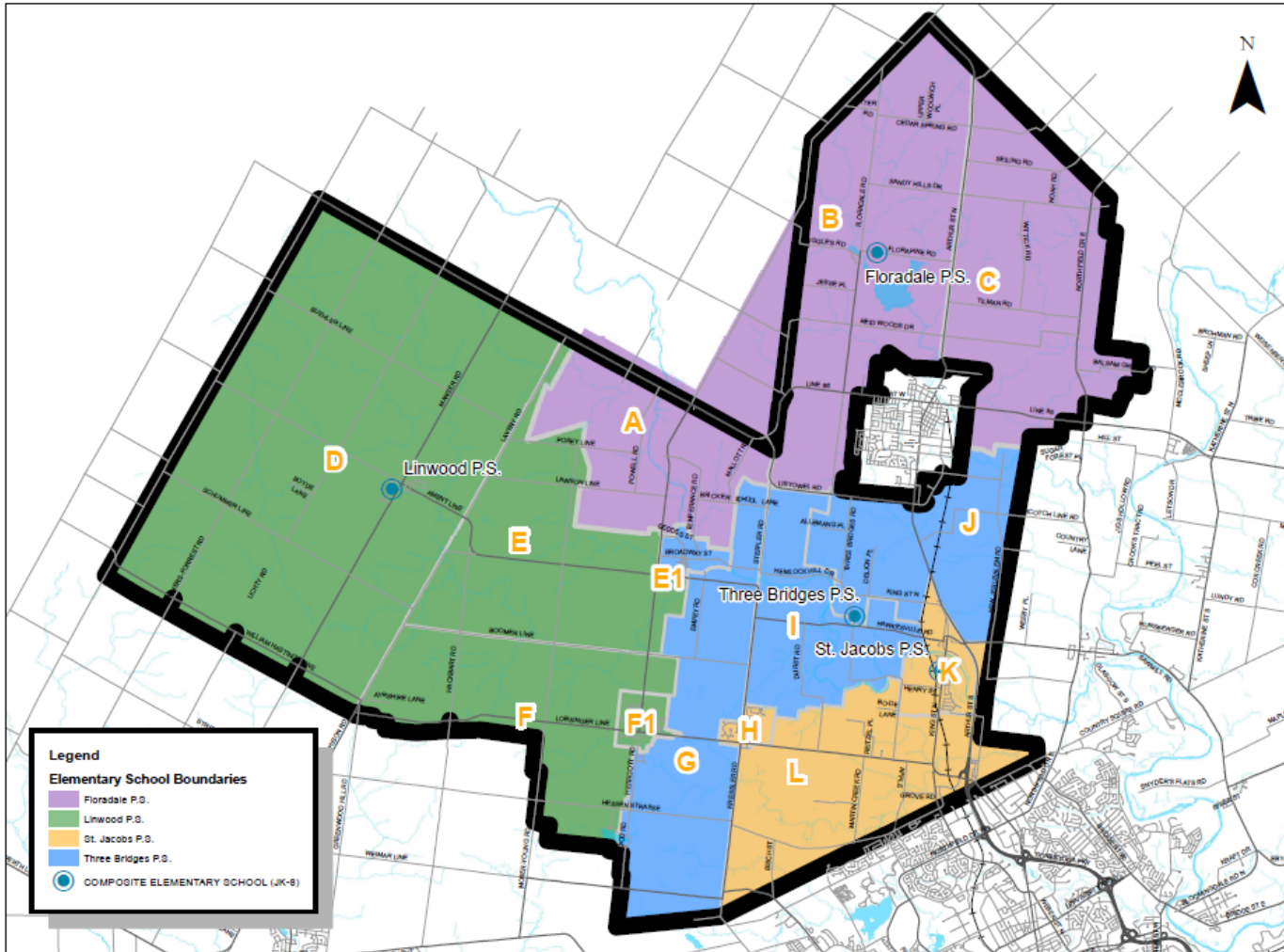
- Details
- Defined Boundary for Three Bridges PS (gets Areas G, I, J)
- St. Jacobs PS gets Areas H, K, L.
- All else remains same

Scenario 1

School	Built Capacity	Capacity with FDK	2012			2014			2016			2018			2020		
			JK-6	7-8	Total	JK-6	7-8	Total	JK-6	7-8	Total	JK-6	7-8	Total	JK-6	7-8	Total
Floradale P.S.	322	322	189	56	245	182	58	240	177	65	242	201	41	242	212	52	264
Linwood P.S.	510	519	359	96	455	369	87	456	381	91	472	397	88	485	400	101	501
St. Jacobs P.S.	348	403	232	57	290	239	68	307	260	72	332	272	68	340	283	71	354
Three Bridges P.S.	92	95	48	15	63	49	14	63	49	15	64	42	24	66	39	18	57
Total	1272	1339	828	224	1053	839	227	1066	867	243	1110	912	221	1133	934	242	1176

4. Modified Scenario Review - Group 1 (TBR defined boundary)

Woolwich and Wellesley Townships Review: Scenario 8



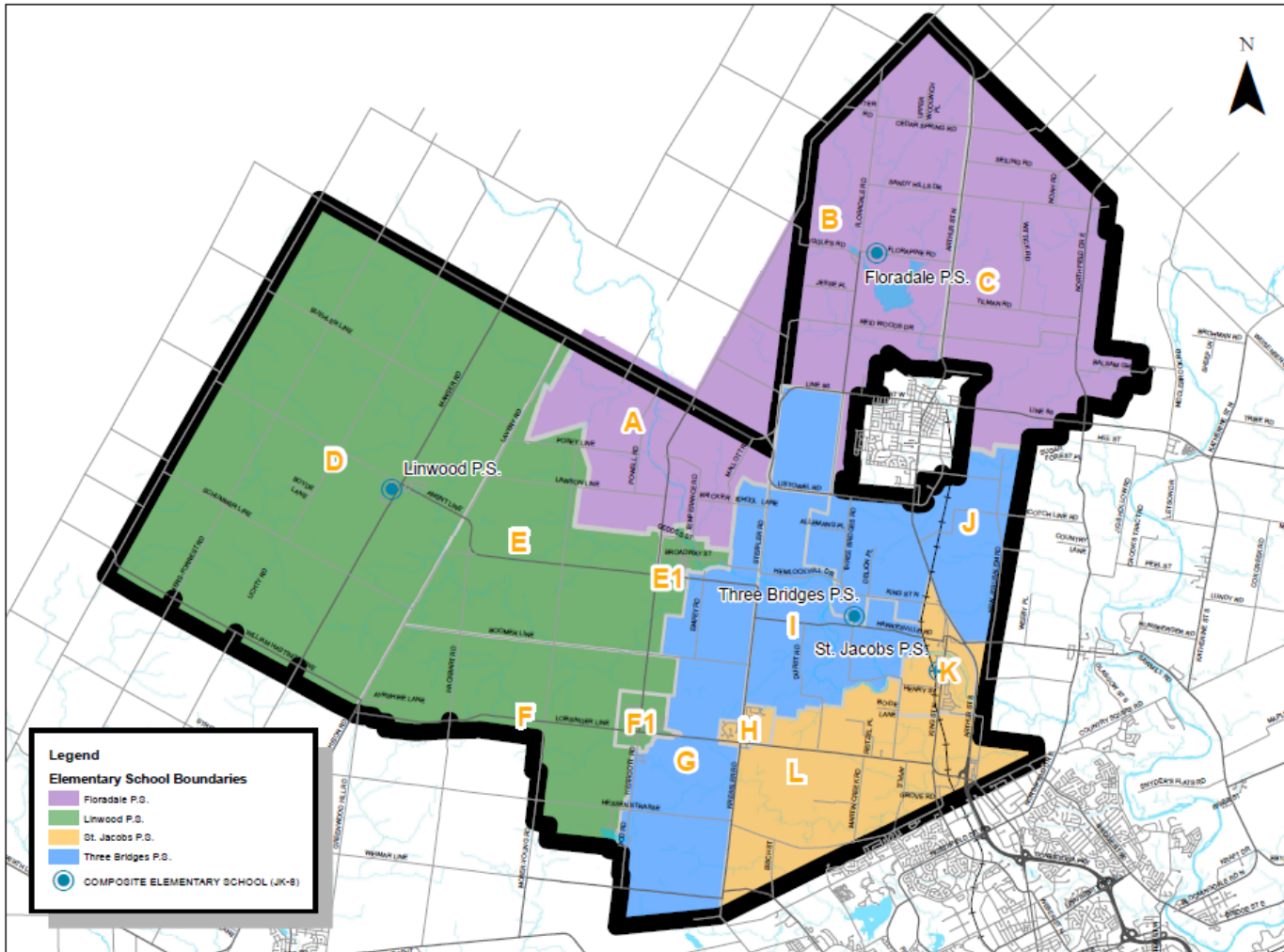
- Details
- Defined Boundary for Three Bridges PS (gets Areas G, I, J, E1)
- St. Jacobs PS gets Areas H, K, L.
- All else remains same

Scenario 8

School	Built Capacity	Capacity with FDK	2012			2014			2016			2018			2020		
			JK-6	7-8	Total	JK-6	7-8	Total	JK-6	7-8	Total	JK-6	7-8	Total	JK-6	7-8	Total
Floradale P.S.	322	322	189	56	245	182	58	240	177	65	242	201	41	242	212	52	264
Linwood P.S.	510	519	333	89	422	337	83	420	347	83	430	360	81	441	363	91	454
St. Jacobs P.S.	348	403	234	58	293	242	68	310	262	74	336	274	68	342	285	72	357
Three Bridges P.S.	92	95	65	17	82	71	14	85	72	19	91	68	26	94	67	23	90
Total	1272	1339	821	220	1042	832	223	1055	858	241	1099	903	216	1119	927	238	1165

4. Modified Scenario Review - Group 1 (TBR defined boundary)

Woolwich and Wellesley Townships Review: Scenario 9



- Details
- Defined Boundary for Three Bridges PS (gets Areas G, I, J, E1, and part of B)
- St. Jacobs PS gets Areas H, K, L.
- All else remains same

Scenario 9

School	Built Capacity	Capacity with FDK	2012			2014			2016			2018			2020		
			JK-6	7-8	Total	JK-6	7-8	Total	JK-6	7-8	Total	JK-6	7-8	Total	JK-6	7-8	Total
Floradale P.S.	322	322	189	56	240	182	58	235	177	65	237	201	41	237	212	52	259
Linwood P.S.	510	519	359	96	455	369	87	456	381	91	472	397	88	485	400	101	501
St. Jacobs P.S.	348	403	232	57	289	239	68	307	260	72	332	272	68	340	283	71	354
Three Bridges P.S.	92	95	39	10	54	39	10	54	38	11	54	31	19	55	30	13	48
Total	1272	1339	819	219	1038	829	223	1052	856	239	1095	901	216	1117	925	237	1162

4. Modified Scenario Review - Group 1 (TBR defined boundary)

Challenges

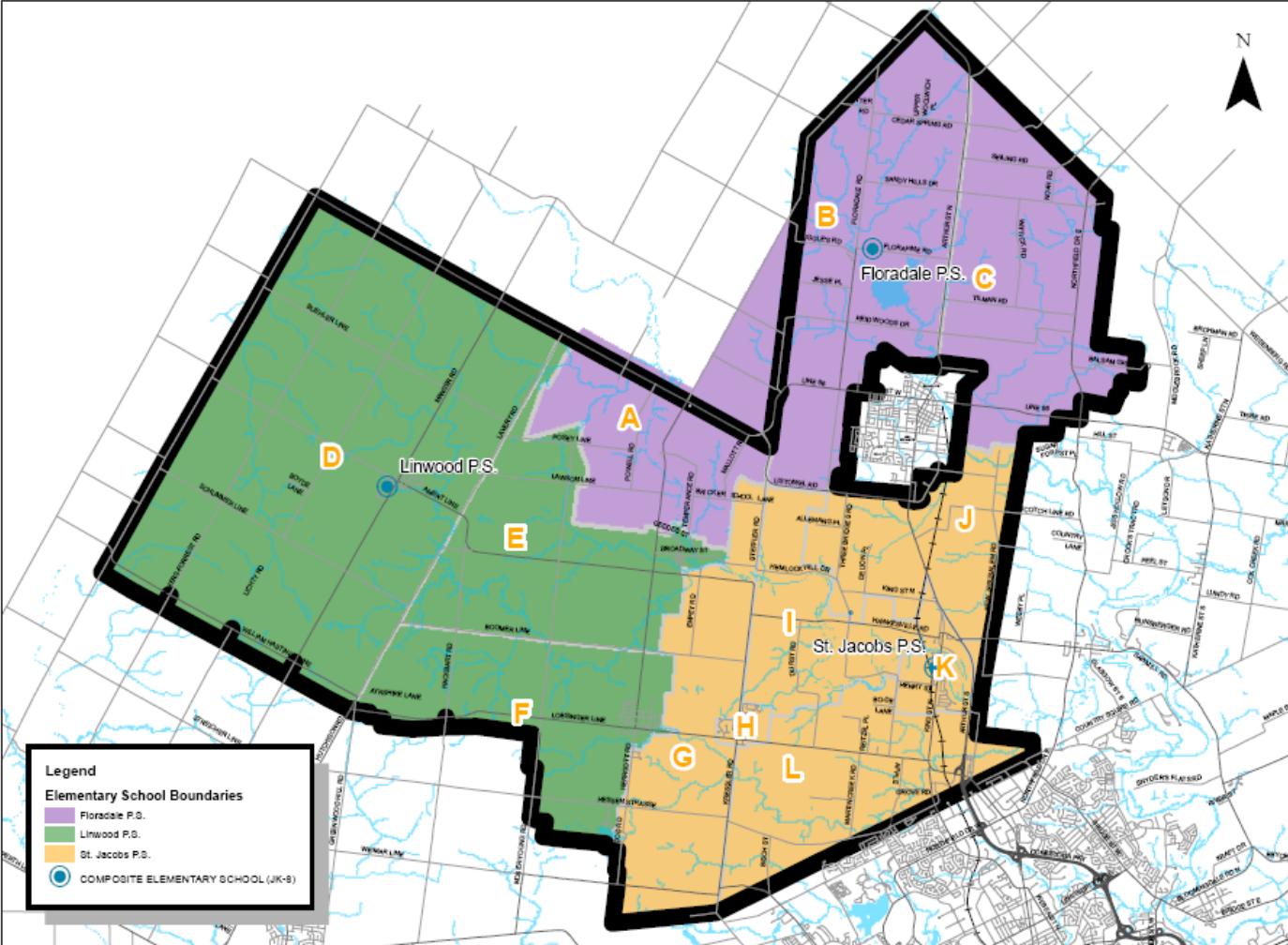
- Overall reduction in enrolment
- Scenarios 1,9: Three Bridges PS too small to be viable (50-60 students)
- Scenario 8 most viable solution of group. Maintains current enrolment numbers (still small school organization) with addition of Hawkesville area.
- Surplus capacity : 1160-1175 enrolment/1244 capacity

Opportunities

- All schools remain open
- All students in permanent capacity (perhaps not Sc. 8 Three Bridges)

4. Modified Scenario Review - Group 2 (TBR closed)

Woolwich and Wellesley Townships Review: Scenario 2



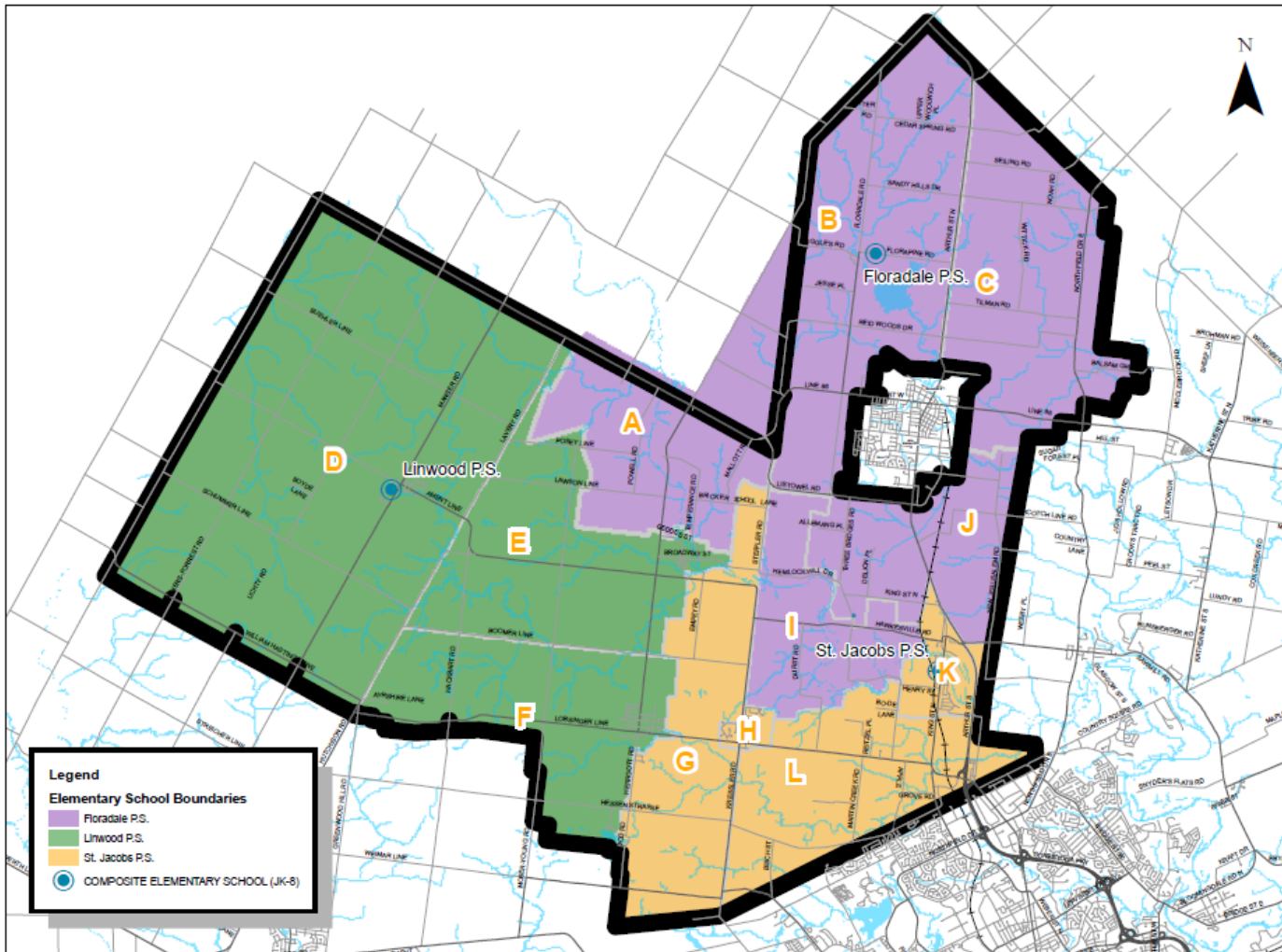
- Details
- Three Bridges PS closed. Students directed to St. Jacobs PS
- All else remains same

Scenario 2

School	Built Capacity	Capacity with FDK	2012			2014			2016			2018			2020		
			JK-6	7-8	Total	JK-6	7-8	Total	JK-6	7-8	Total	JK-6	7-8	Total	JK-6	7-8	Total
Floradale P.S.	322	322	189	56	245	182	58	240	177	65	242	201	41	242	212	52	264
Linwood P.S.	510	519	359	96	455	369	87	456	381	91	472	397	88	485	400	101	501
St. Jacobs P.S.	348	403	271	67	338	278	78	356	298	83	381	303	87	390	313	84	397
Three Bridges P.S.	92	95	0	0	0	0	0	0	0	0	0	0	0	0	0	0	0
Total	1180	1244	819	219	1038	829	223	1052	856	239	1095	901	216	1117	925	237	1162

4. Modified Scenario Review - Group 2 (TBR closed)

Woolwich and Wellesley Townships Review: Scenario 3



•Details

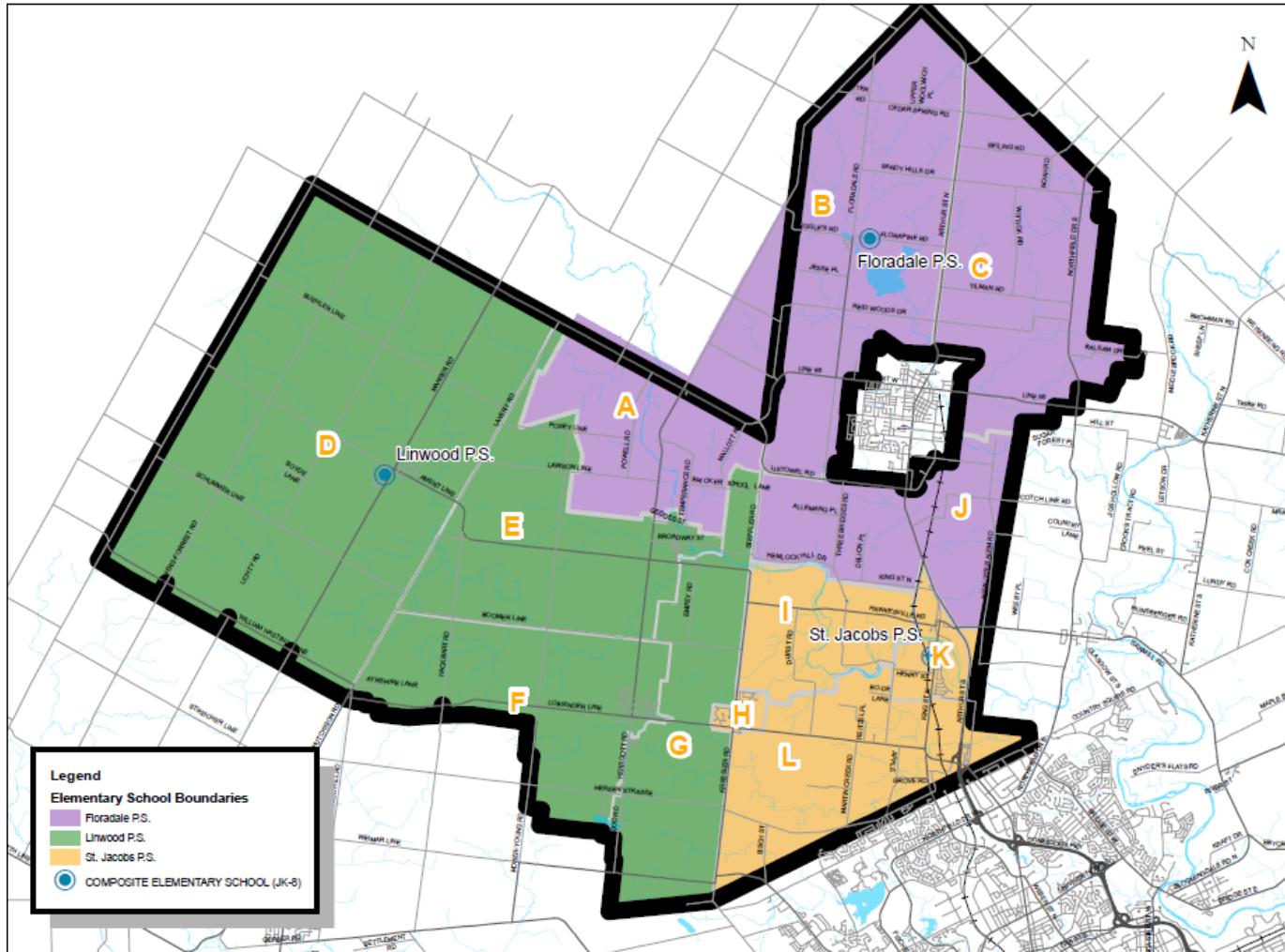
- Three Bridges PS closed. Students directed to St. Jacobs PS and Floradale PS.
- St. Jacobs PS gets Areas G, H, K, L.
- Floradale PS gets Areas I, J from St. Jacobs PS.

Scenario 3

School	Built Capacity	Capacity with FDK	2012			2014			2016			2018			2020		
			JK-6	7-8	Total	JK-6	7-8	Total	JK-6	7-8	Total	JK-6	7-8	Total	JK-6	7-8	Total
Floradale P.S.	322	322	217	66	283	209	67	276	203	75	278	223	53	276	230	62	292
Linwood P.S.	510	519	359	96	455	369	87	456	381	91	472	397	88	485	400	101	501
St. Jacobs P.S.	348	403	247	59	307	256	70	326	276	75	351	285	76	361	297	76	373
Three Bridges P.S.	92	95	0	0	0	0	0	0	0	0	0	0	0	0	0	0	0
Total	1180	1244	823	221	1045	834	224	1058	860	241	1101	905	217	1122	927	239	1166

4. Modified Scenario Review - Group 2 (TBR closed)

Woolwich and Wellesley Townships Review: Scenario 6



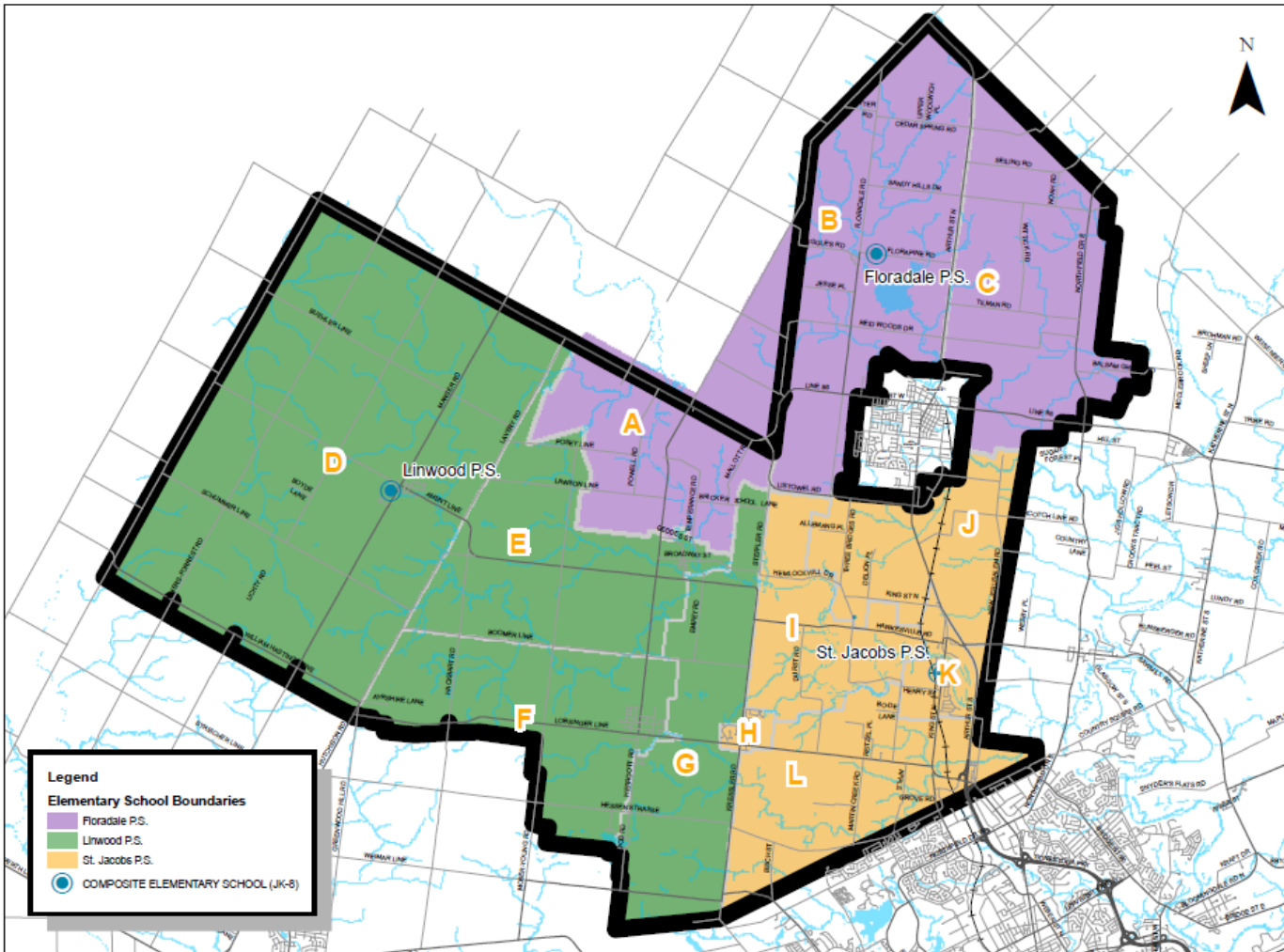
- Details
- Three Bridges PS closed. Students directed to St. Jacobs PS except Area J which is directed to Floradale.
- Steffler Rd. Area (not shown b/w Area A,J directed to Floradale)

Scenario 6

School	Built Capacity	Capacity with FDK	2012			2014			2016			2018			2020		
			JK-6	7-8	Total	JK-6	7-8	Total	JK-6	7-8	Total	JK-6	7-8	Total	JK-6	7-8	Total
Floradale P.S.	322	322	203	59	277	196	61	272	188	69	272	212	46	273	222	55	292
Linwood P.S.	510	519	372	97	469	382	89	471	393	94	487	407	94	501	411	104	515
St. Jacobs P.S.	348	403	244	63	295	257	75	317	280	79	344	288	76	349	296	81	362
Three Bridges P.S.	92	95	0	0	0	0	0	0	0	0	0	0	0	0	0	0	0
Total	1180	1244	819	219	1041	835	225	1060	861	242	1103	907	216	1123	929	240	1169

4. Modified Scenario Review - Group 2 (TBR closed)

Woolwich and Wellesley Townships Review: Scenario 7



•Details

•Three Bridges PS closed. Students directed to St. Jacobs PS except Area G which is directed to Linwood.

Scenario 7

School	Built Capacity	Capacity with FDK	2012			2014			2016			2018			2020		
			JK-6	7-8	Total	JK-6	7-8	Total	JK-6	7-8	Total	JK-6	7-8	Total	JK-6	7-8	Total
Floradale P.S.	322	322	189	56	245	182	58	240	177	65	242	201	41	242	212	52	264
Linwood P.S.	510	519	372	97	469	382	89	471	393	94	487	407	94	501	411	104	515
St. Jacobs P.S.	348	403	258	66	325	265	76	341	286	80	366	293	81	374	302	81	383
Three Bridges P.S.	92	95	0	0	0	0	0	0	0	0	0	0	0	0	0	0	0
Total	1180	1244	819	219	1039	829	223	1052	856	239	1095	901	216	1117	925	237	1162

4. Modified Scenario Review - Group 2 (TBR closed)

Challenges

- Overall reduction in enrolment
- Surplus capacity : 1160-1170 enrolment/1244 capacity

Opportunities

- All students in permanent capacity
- Reduction in facility maintenance/future accessibility costs
- Increase utilization, program size (Floradale PS) at retained facilities.

4. Modified Scenarios – Next Steps

- Scenario evaluation
 - Using objectives narrow down which scenarios we want to carry forward
- Scenario Costing
 - Determine costs for Scenarios. Take into consideration
 - Facility condition/amenities
 - Accessibility
 - Enrolment implications

Woolwich & Wellesley Townships Accommodation Review

ARC # 13

- Wednesday June 6, 2012: 6:30- 8:00 p.m.

ARC # 14

- Wednesday June 20, 2012: 6:30- 8:00 p.m.

Summer Break

- July – August – no meetings



Contact Information

- Website: www.wrdsb.ca
 - » About>Planning>Accommodation Reviews
 - » Woolwich Wellesley Townships Accommodation Review
- E-mail: boundaryfeedback@wrdsb.on.ca
- Phone: 519-570-0003 ext. 4419

