

# Woolwich/Wellesley Townships

## Elementary Schools Pupil Accommodation Review **Accommodation Review Committee Meeting #9**

February 22, 2012

St. Jacobs P.S. Library 6:30 – 8:00 pm



Waterloo Region  
District School Board

# Agenda

- 1. Welcome**
- 2. ARC Meeting # 8 – Draft Minutes**
- 3. Draft Issues/Objectives**
- 4. Additional Requested Information**
- 5. Scenario Discussion**
- 6. Future Meeting Dates/Times**



### 3. Draft Objectives

- 1. Ensure equitable student access to a community school by having defined attendance area boundaries that relate geographically to the community it is located in.**
- 2. Where possible organize school attendance boundaries to minimize distance to school (time on bus).**
- 3. Address student transitions where changes proposed.**
- 4. Have regard for Board policy 3002; Elementary School Size and Configuration, recognizing the challenges of rural areas.**

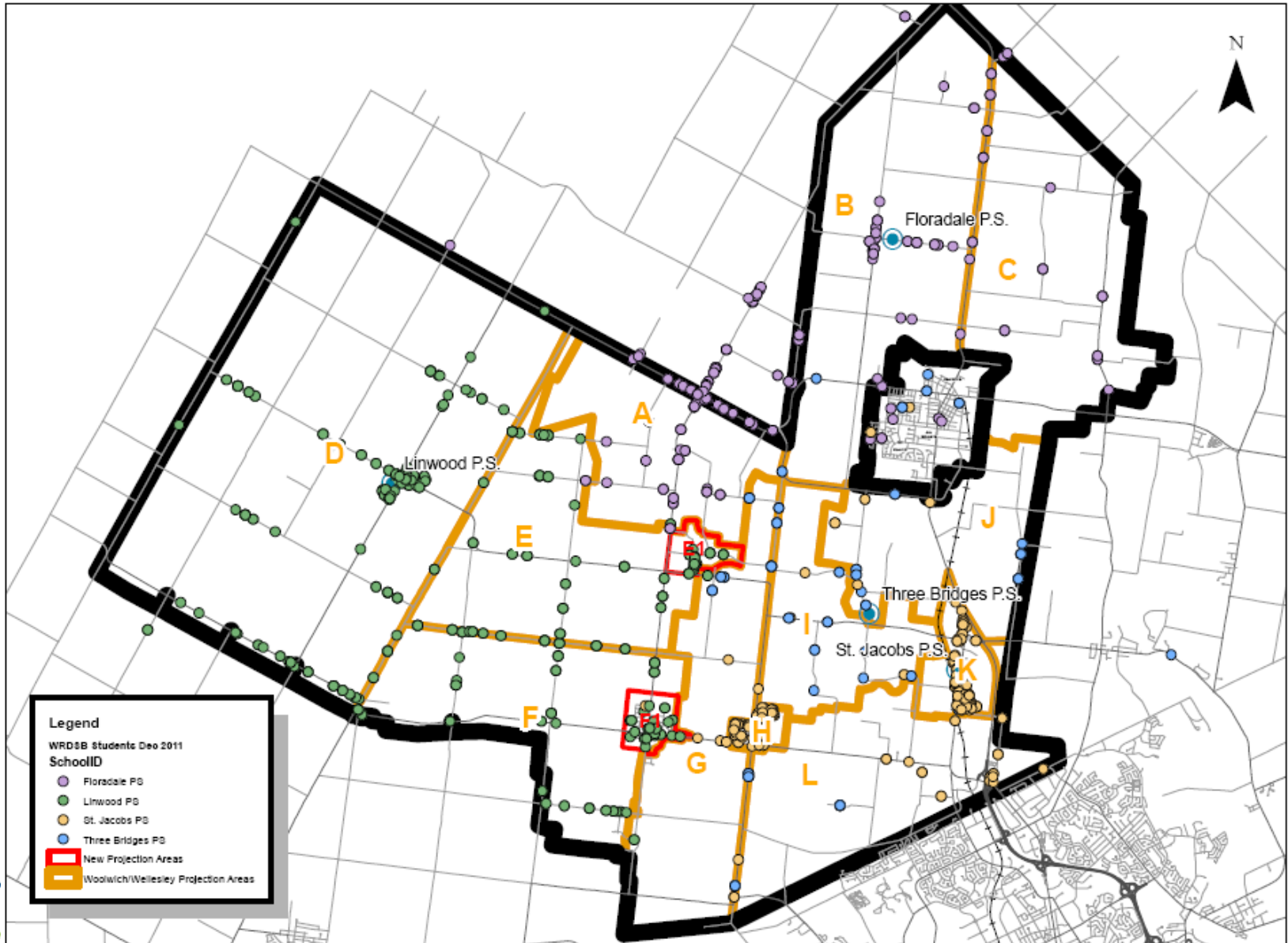
### 3. Draft Objectives

5. **Support the efficient use of capital and operating resources through the consideration of facility condition, accessibility, and equitable access to educational amenities.**
6. **Maximize the number of students accommodated in permanent capacity**
7. **Maximize the use of existing capacity within facilities**
8. **Recognize the unique needs of communities served by different schools through the reasonable accommodation of cultural differences.**



# 4. Additional Information

Woolwich and Wellesley Townships Review Projection Areas: 2011 Student Distribution by School



# 4. Additional Information

Woolwich/Wellesley Townships Total Enrolment Projections By Area Summary

AREA	2011			2012			2013			2014			2015			2016			2017			2018			2019			2020		
	JK-6 Total	7-8 Total	Total JK-8	JK-6 Total	7-8 Total	Total JK-8	JK-6 Total	7-8 Total	Total JK-8	JK-6 Total	7-8 Total	Total JK-8	JK-6 Total	7-8 Total	Total JK-8	JK-6 Total	7-8 Total	Total JK-8	JK-6 Total	7-8 Total	Total JK-8	JK-6 Total	7-8 Total	Total JK-8	JK-6 Total	7-8 Total	Total JK-8			
A	46	13	59	47	13	60	47	14	61	43	14	57	43	14	57	43	16	59	47	14	61	47	13	60	48	15	63	45	15	60
B	44	13	57	44	9	53	39	14	53	40	14	54	38	13	51	39	13	52	38	12	50	43	10	53	46	6	52	50	7	57
C	22	4	26	22	5	27	21	7	28	24	5	29	23	6	29	23	8	31	22	7	29	23	6	29	23	5	28	23	6	29
D	169	50	219	168	47	215	173	42	215	177	40	217	184	41	225	187	40	227	193	39	232	193	42	235	193	48	241	194	47	241
E	80	31	111	81	28	109	83	21	104	84	21	105	81	26	107	84	25	109	89	19	108	93	18	111	92	21	113	90	25	115
E1*	26	11	37	29	8	37	31	5	36	33	6	39	34	7	41	35	8	43	37	7	44	37	8	45	37	10	47	37	10	47
F	119	26	145	117	23	140	112	29	141	106	32	138	105	28	133	103	28	131	105	28	133	102	28	130	103	30	133	109	25	134
F1*	29	11	40	33	9	42	33	7	40	36	10	46	41	6	47	40	7	47	41	8	49	39	9	48	40	9	49	38	9	47
G(S)	8	1	9	9	0	9	8	1	9	7	2	9	7	1	8	6	1	7	6	3	9	5	4	9	4	3	7	6	1	7
G(T)	14	5	19	15	5	20	14	6	20	14	6	20	16	4	20	17	4	21	18	4	22	16	5	21	15	6	21	17	5	22
H(S)	64	21	85	59	23	82	59	19	78	59	14	73	55	19	74	57	18	75	53	19	72	55	19	74	58	13	71	60	15	75
H(T)	2	0	2	3	0	3	2	1	3	2	1	3	3	0	3	2	1	3	2	1	3	2	1	3	2	1	3	2	0	2
I(S)	5	2	7	6	2	8	4	3	7	3	3	6	5	2	7	5	2	7	1	4	5	1	4	5	1	3	4	1	2	3
I(T)	12	7	19	13	8	21	16	5	21	15	6	21	16	8	24	17	6	23	17	5	22	17	7	24	15	10	25	14	8	22
J(S)	8	0	8	9	0	9	8	2	10	8	2	10	6	1	7	5	2	7	4	3	7	4	3	7	4	1	5	3	1	4
J(T)	14	6	20	14	8	22	17	3	20	17	3	20	17	4	21	16	6	22	15	7	22	18	5	23	16	6	22	16	6	22
K(S)	151	26	177	151	32	183	143	46	189	143	46	189	138	42	180	136	43	179	145	29	174	143	30	173	144	40	184	145	38	183
K(T)	2	1	3	2	1	3	3	0	3	3	0	3	2	1	3	2	2	4	2	1	3	2	0	2	2	1	3	2	1	3
L(S)	24	8	32	24	4	28	23	5	28	21	7	28	22	5	27	22	3	25	22	6	28	22	8	30	26	4	30	25	4	29
L(T)	5	2	7	4	3	7	4	2	6	4	2	6	2	3	5	3	2	5	3	0	3	4	0	4	3	1	4	2	2	4
FLO OOB	84	28	112	80	31	111	77	31	108	79	25	104	78	23	101	73	30	103	81	22	103	88	13	101	91	20	111	94	24	118
LIN OOB	11	3	14	12	3	15	9	5	14	10	4	14	10	1	11	11	1	12	10	2	12	9	4	13	8	4	12	7	4	11
STJ OOB	8	1	9	9	1	10	7	3	10	7	4	11	7	2	9	8	2	10	10	1	11	10	1	11	10	2	12	9	2	11
TBR OOB	6	4	10	7	4	11	10	1	11	12	1	13	12	2	14	12	1	13	11	3	14	11	5	16	11	5	16	9	6	15

\* Areas E1, F1 are subsets of Areas E, F

modified Feb 21/2012

## New Projection Areas

- E1 (Hawksville), F1 (St. Clements)
- Subsets of Areas E, F



## 4. Additional Information - Facilities

### Gym space benchmarking

School	OTG Capacity	Portapak Capacity	Enrolment (2010)	Gym ft2	Gym ft2/OTG	Ranking (ft2/OTG)	Gym ft2/Enrolment	Ranking (ft2/Enrolment)
Empire PS	279	115	491	1923	6.89	15	3.92	1
Wilson Ave. PS	422	-	412	2013	4.89	1	4.98	3
<b>St. Jacobs PS</b>	<b>348</b>	<b>-</b>	<b>319</b>	<b>2376</b>	<b>6.83</b>	<b>14</b>	<b>7.45</b>	<b>29</b>
<b>Linwood PS</b>	<b>469</b>	<b>-</b>	<b>510</b>	<b>3712</b>	<b>7.28</b>	<b>17</b>	<b>7.91</b>	<b>33</b>
Floradale PS	322	-	251	2818	8.75	33	11.23	68
<b>Three Bridges PS</b>	<b>92</b>	<b>-</b>	<b>83</b>	<b>1659</b>	<b>9.61</b>	<b>96</b>	<b>18.03</b>	<b>100</b>
Cedar Creek PS	256	138	422	6268	24.48	100	14.85	88



# 4. Additional Information - Facilities

## Library Assessments

Based on criteria from *Information Studies: Standards for School Library Programs in Canada*. (Canadian Association for School Libraries, 2003)

- Overall space
- Instructional Areas
- Instructional Computers
- Staff Work Areas
- Seminar rooms
- Shelving
- Summary



## 4. Additional Information - Facilities

### Library Assessments

#### Floradale PS

- Purpose built library space
- Excellent space for three classes to be working at the same time
- Staff work area is well laid out, with space for storage and a workspace for the clerk
- Shelving suits the type of resources, but still short on space. A/V storage room unavailable
- Computer lab in open concept library a challenge (noise)
- **Overall a bright, clean well functioning library and it would be able to accommodate an increase in population**

## 4. Additional Information - Facilities

### Library Assessments

#### Three Bridges PS

- Classroom changed to a library space
- Carpeted area can fit one whole class, only two rectangular tables for students to work
- Storage, workspace very limited
- Shelving in good condition although not enough for school.  
Considering small population, high circulation school
- **Excellent facility for small population. Clean, bright, well kept.  
High circulation for small enrolment**

## 4. Additional Information - Facilities

### Library Assessments

#### Linwood PS

- Old gym converted to library space
- Instructional area with white board available for whole class. Carpet with story time space. Computer area with five computers
- Dedicated librarian office space, room for visiting library staff
- Two seminar rooms
- Variety of shelving purchased over last three years to accommodate collection. Modular pieces can be used to define spaces
- **This is a bright open space that has been reorganized to suit the school needs**

## 4. Additional Information - Facilities

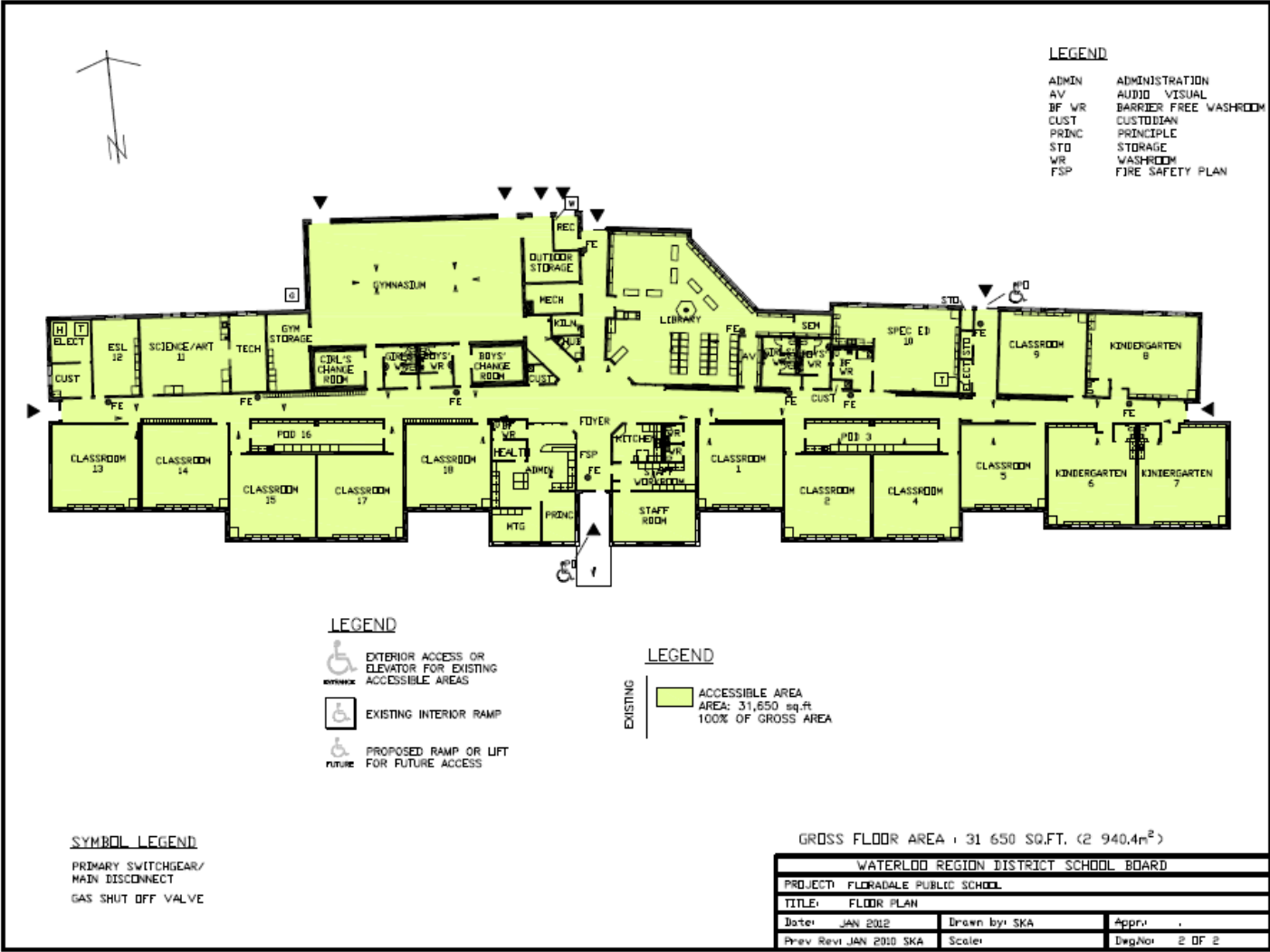
### Library Assessments

#### St. Jacobs PS

- Small for population. Large heating unit (non-functioning) takes up space
- Challenging to accommodate whole class
- Small separate area for three computers
- New shelving works well, but not enough of it. No space in library for teacher resources
- **Too small for the school and number of resources but is bright and clean and has maximized use of space. High usage. Would not accommodate large population increase. Not accessible**

# 4. Additional Information - Accessibility

Floradale PS



•100% accessible

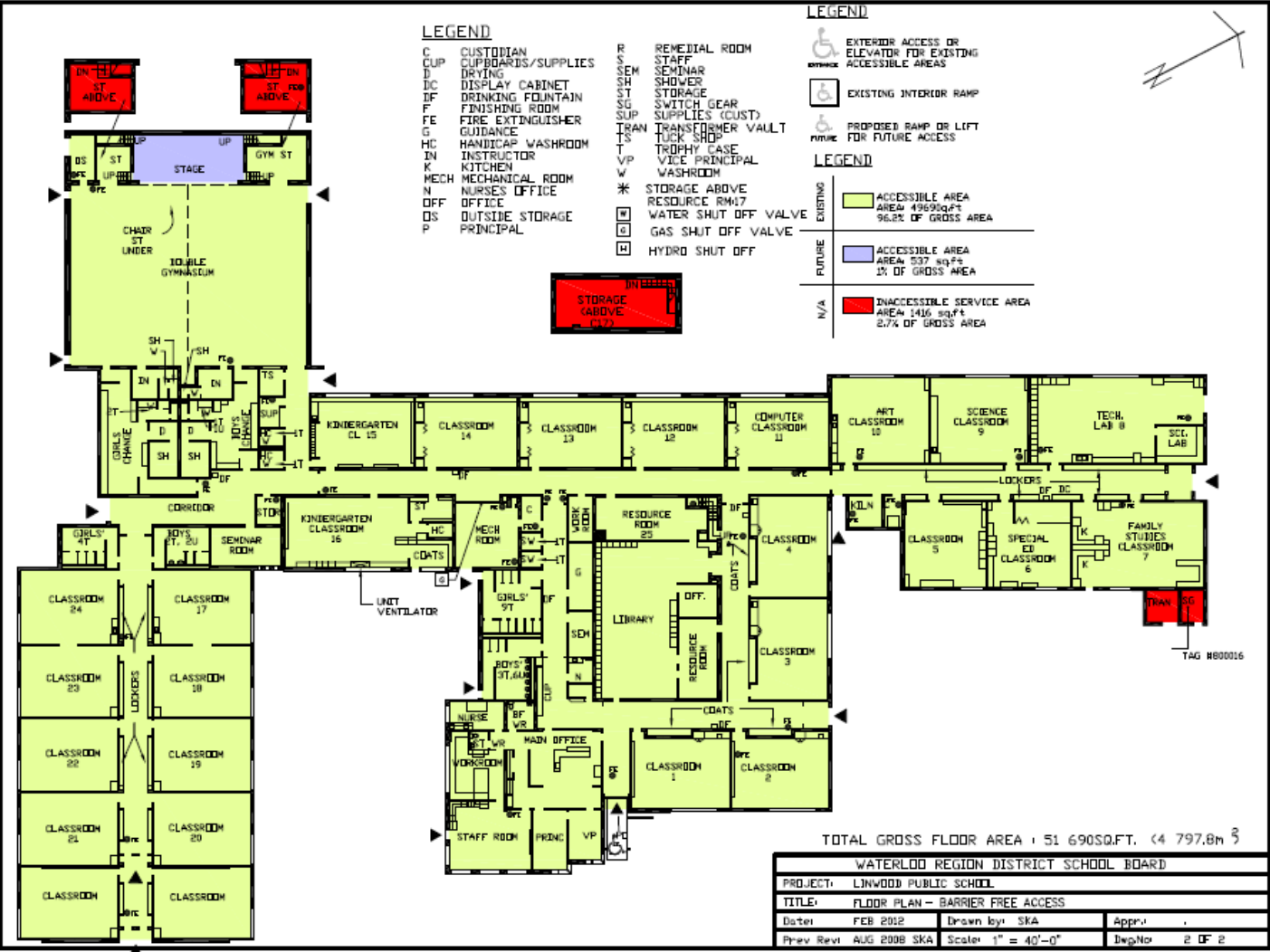


Waterloo Region  
 District School Board

# 4. Additional Information - Accessibility

Linwood PS

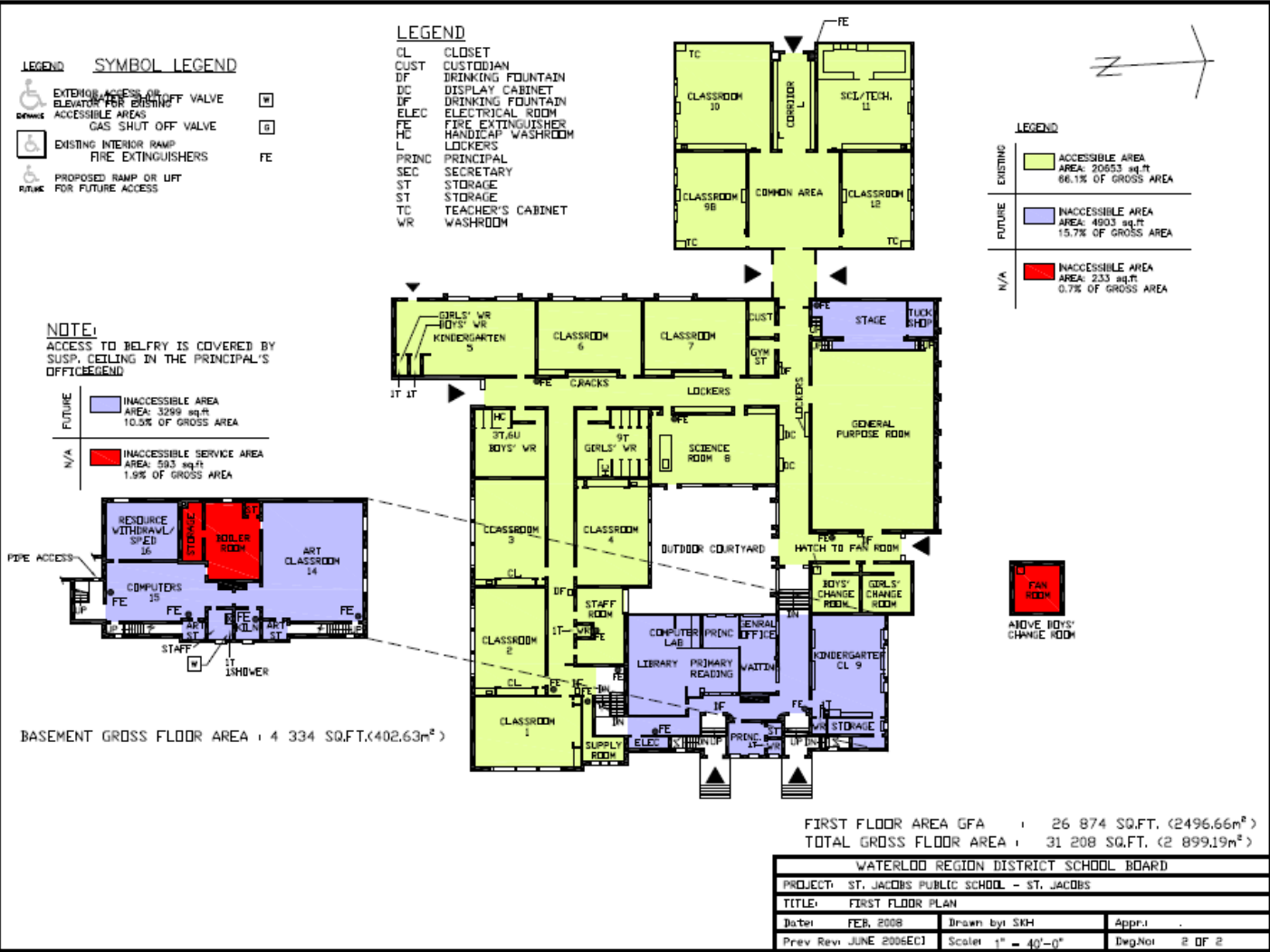
- 96.2% accessible
- 1% (Stage area) inaccessible
- Remainder-maintenance/service areas



Waterloo Region District School Board

# 4. Additional Information - Accessibility

## St. Jacobs PS

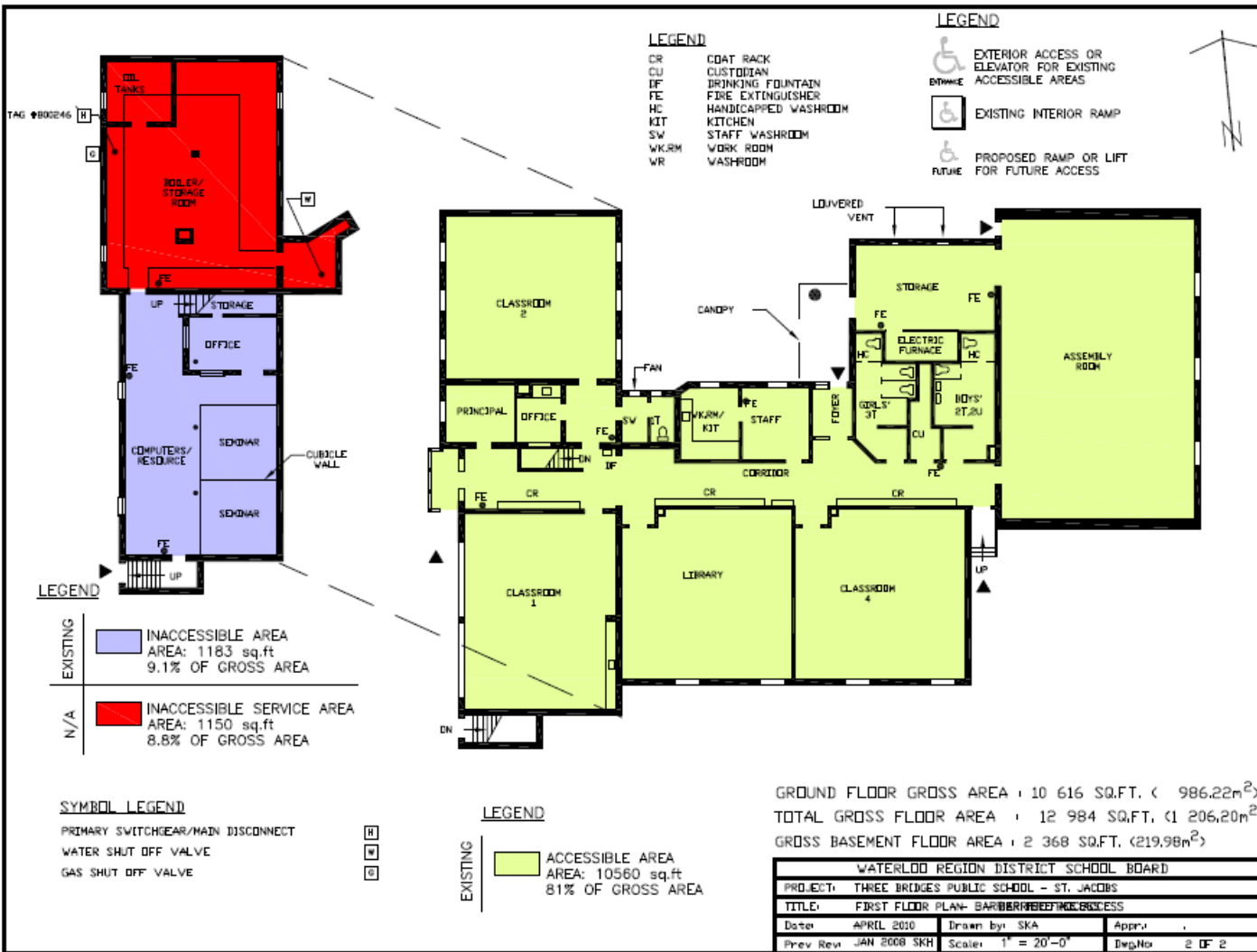


- 66.1% accessible
- 15.7% inaccessible (stage, office, library, kindergarten classroom, art room, computers, resource, withdrawal)
- 0.7% maintenance/service areas



# 4. Additional Information - Accessibility

## Three Bridges PS



- 81% accessible
- 9.1% inaccessible (computers, resource, seminar)
- 8.8% maintenance/service areas





## 4. Additional Information – Facility Condition Assessment

- Conducted Dec 2011- Jan 2012 by Anderson Building Science – John Pogacar (P.Eng)
  - Floradale
  - St. Jacobs
  - Linwood
  - Three Bridges PS

# 4. Additional Information – Facility Condition Assessment

## School Renewal Funding Budgets

Z02	Z04	Z12	Z15	Z23	Z25	Z33	Z38	Z50
Instructional Computer Infrastructure	Environmental	Program Related Projects	School Communication Systems	Interior Finishes	Mechanical/Electrical	Building Envelope/Structure	Accessibility	Site Improvements



## 4. Additional Information – Facility Condition Assessment

	Cost (\$000)									
	Z02 Instructional Computer Infrastructure	Z04 Environmental	Z12 Program Related Projects	Z15 School Communicatio n Systems	Z23 Interior Finishes	Z25 Mechanical/ Electrical	Z33 Building Envelope/ Structure	Z38 Accessibility	Z50 Site Improvements	Total
<b>Floradale</b>					0	0	0	Yes	0	<b>0</b>
<b>Linwood</b>				45	506	1120	543	Yes	214	<b>2383</b>
<b>St. Jacobs</b>					48	1400	220	Partial	144	<b>1812</b>
<b>Three Bridges</b>					131	138	171	Partial	68	<b>508</b>

## 4. Additional Information – Facility Condition Assessment

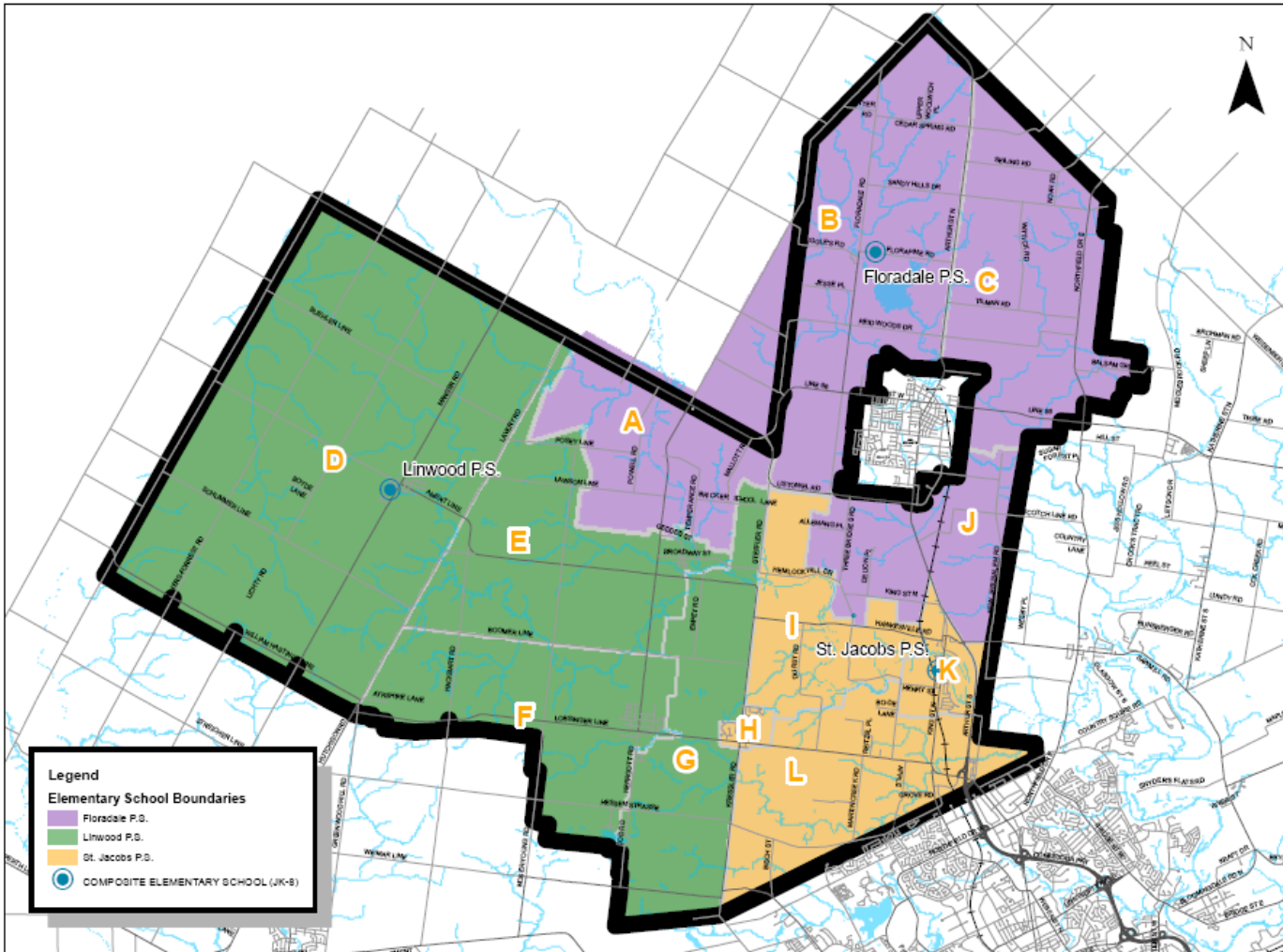
School	Total GFA (m <sup>2</sup> )	OTG	\$/m <sup>2</sup> Funded	m <sup>2</sup> / Student	\$ Funded if Built New	5 Yr Renewal Needs From Assessment	Facility Condition Index (FCI)
Floradale	Emira	322	1847.53	11.32	\$6,734,321	\$0	0.00
Linwood	Linwood	510	1847.53	10.24	\$9,648,541	\$2,383,000	0.25
St. Jacobs	St. Jacobs	348	1847.53	11.07	\$7,117,351	\$1,812,000	0.25
Three Bridges	St. Jacobs	92	1848.53	13.87	\$2,358,798	\$508,000	0.22

- Facility Condition Index = Renewal Needs/Cost to build new
- Previous Ministry of Education Prohibitive to Repair (PTR) funding threshold FCI = 0.65



# 4. New Scenario Discussion

## Woolwich and Wellesley Townships Review: Scenario 6



### • Details

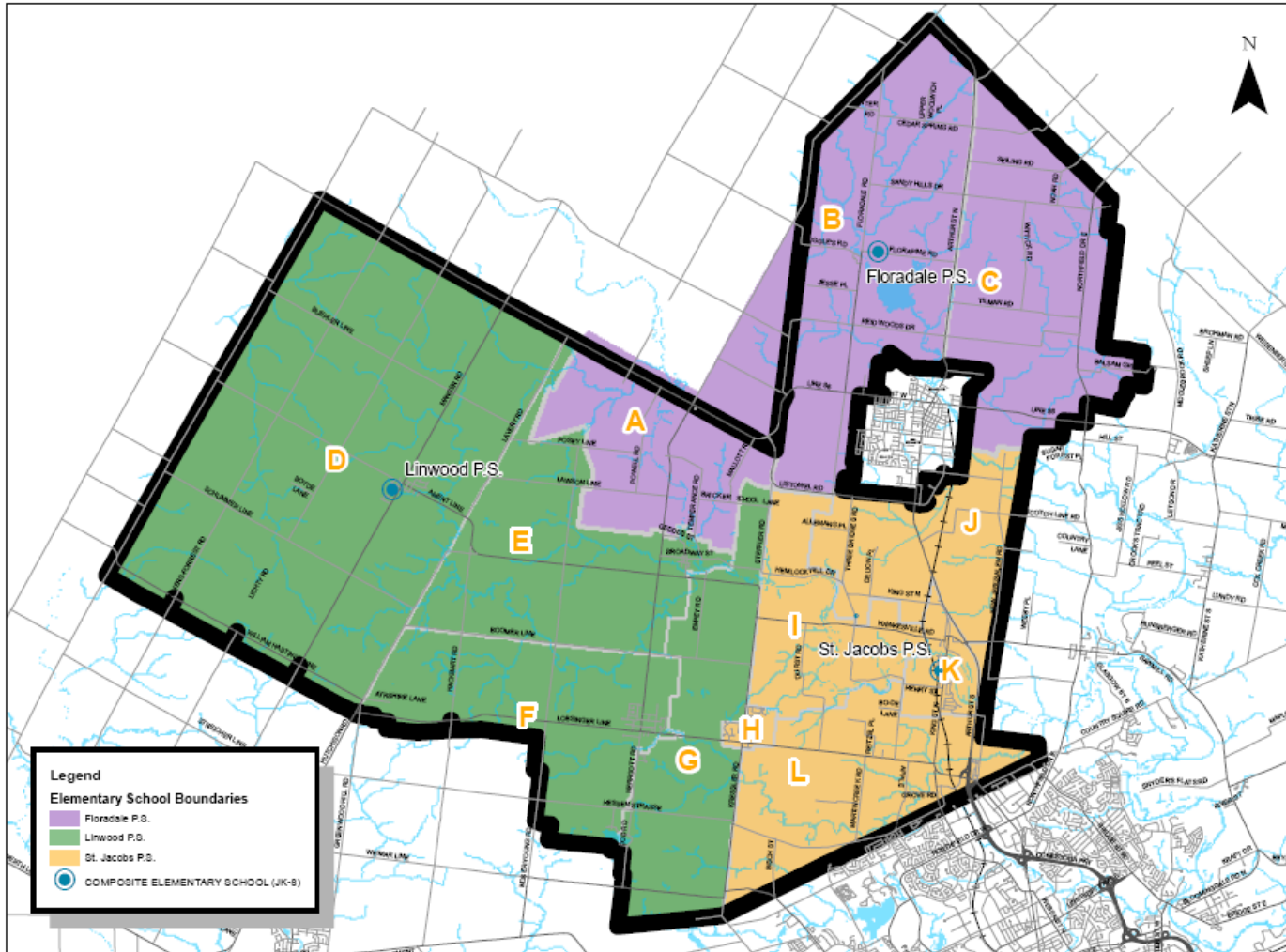
- Three Bridges PS closed. Students directed to St. Jacobs PS except Area J which is directed to Floradale.
- Steffler Rd. Area (not shown b/w Area A, J directed to Floradale)

Scenario 6

School	Built Capacity	Capacity with FDK	2012			2014			2016			2018			2020		
			JK-6	7-8	Total	JK-6	7-8	Total	JK-6	7-8	Total	JK-6	7-8	Total	JK-6	7-8	Total
Floradale P.S.	322	322	212	64	291	207	63	285	198	73	286	223	49	287	231	59	305
Linwood P.S.	510	519	381	100	481	390	93	483	404	96	500	418	97	515	423	107	530
St. Jacobs P.S.	348	?	261	71	317	264	79	328	263	78	324	267	74	326	269	78	332
Three Bridges P.S.	92	92	0	0	0	0	0	0	0	0	0	0	0	0	0	0	0
<b>Total</b>	<b>1180</b>		<b>854</b>	<b>235</b>	<b>1089</b>	<b>861</b>	<b>235</b>	<b>1096</b>	<b>865</b>	<b>245</b>	<b>1110</b>	<b>908</b>	<b>220</b>	<b>1128</b>	<b>923</b>	<b>244</b>	<b>1167</b>

# 4. New Scenario Discussion

## Woolwich and Wellesley Townships Review: Scenario 7



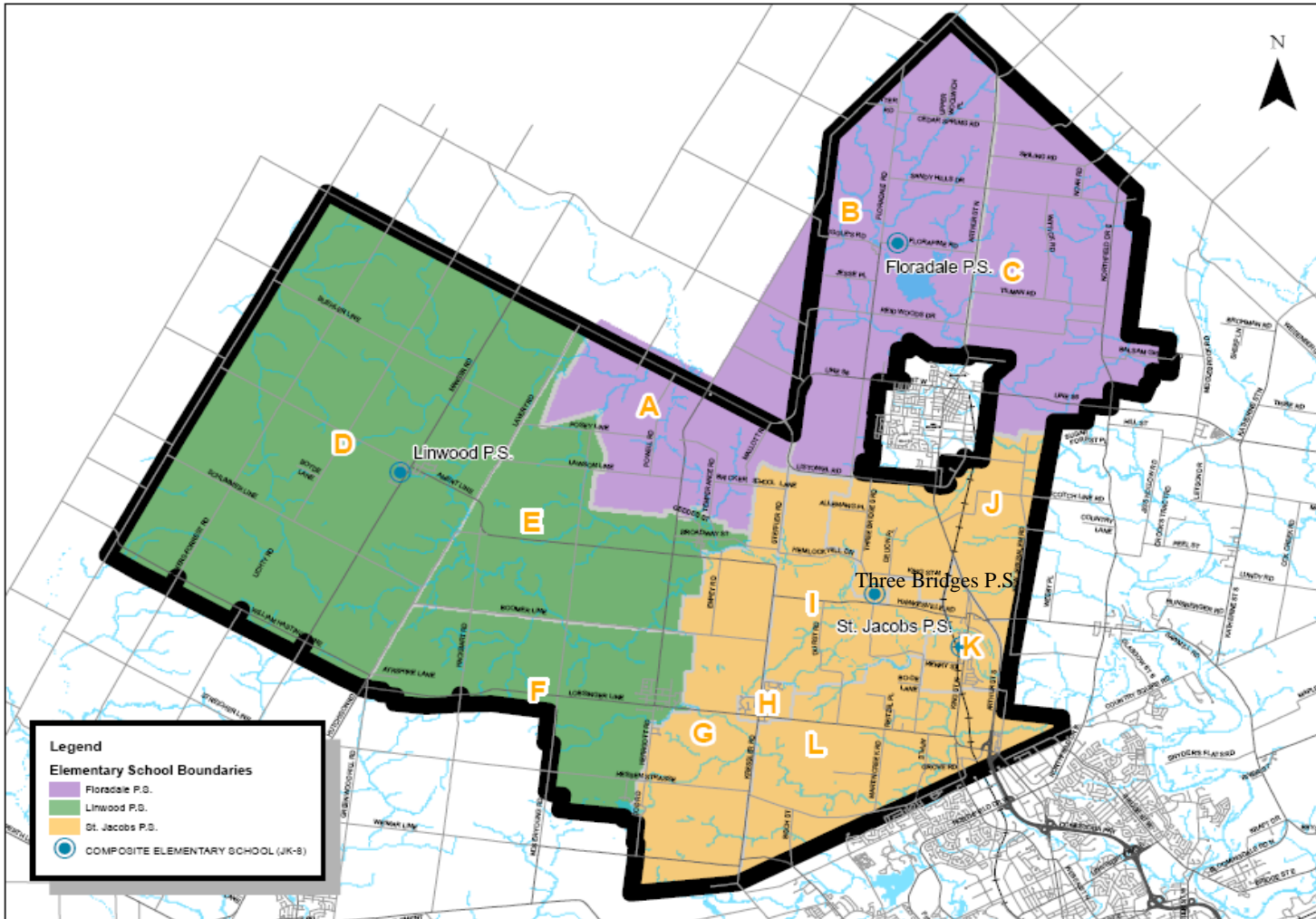
- Details
- Three Bridges PS closed. Students directed to St. Jacobs PS except Area G which is directed to Linwood.

Scenario 7

School	Built Capacity	Capacity with FDK	2012			2014			2016			2018			2020		
			JK-6	7-8	Total	JK-6	7-8	Total	JK-6	7-8	Total	JK-6	7-8	Total	JK-6	7-8	Total
Floradale P.S.	322	322	189	56	245	182	58	240	177	65	242	201	41	242	212	52	264
Linwood P.S.	510	510	381	100	481	390	93	483	404	96	500	418	97	515	423	107	530
St. Jacobs P.S.	348	?	284	79	363	289	84	373	284	84	368	289	82	371	288	85	373
Three Bridges P.S.	92	92	0	0	0	0	0	0	0	0	0	0	0	0	0	0	0
<b>Total</b>	<b>1180</b>		<b>854</b>	<b>235</b>	<b>1089</b>	<b>861</b>	<b>235</b>	<b>1096</b>	<b>865</b>	<b>245</b>	<b>1110</b>	<b>908</b>	<b>220</b>	<b>1128</b>	<b>923</b>	<b>244</b>	<b>1167</b>

# 4. Scenario Discussion

## Woolwich and Wellesley Townships Review: Status Quo

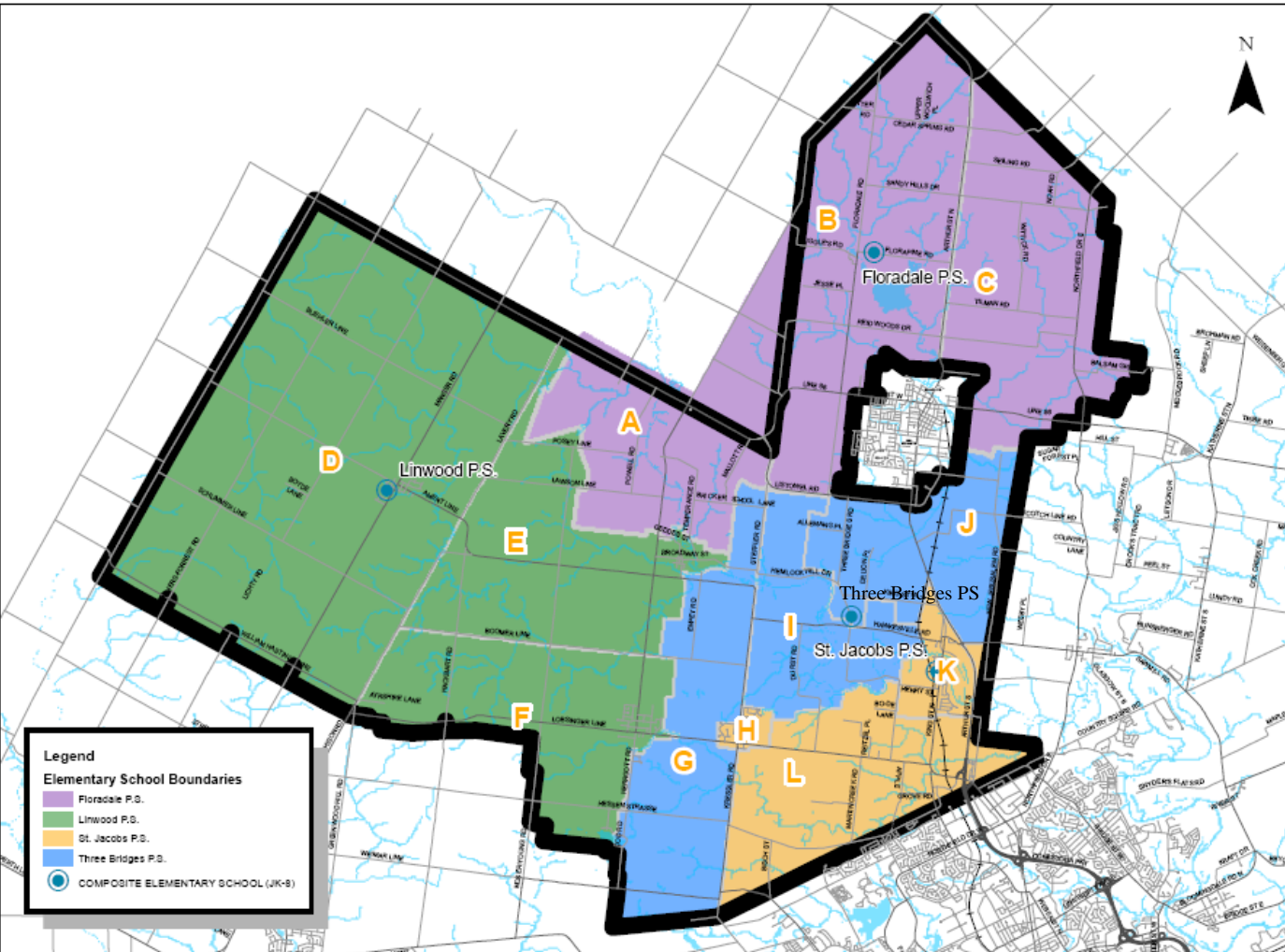


Details  
 No change to existing situation

School	Built Capacity	Capacity with FDK	2012			2014			2016			2018			2020		
			JK-6	7-8	Total	JK-6	7-8	Total	JK-6	7-8	Total	JK-6	7-8	Total	JK-6	7-8	Total
Floradale P.S.	322	322	189	58	245	182	58	240	177	65	242	201	41	242	212	52	264
Linwood P.S.	510	519	359	98	455	369	87	456	381	91	472	397	88	485	400	101	501
St. Jacobs P.S.	348	?	255	58	313	243	71	314	238	67	305	240	68	308	249	63	312
Three Bridges P.S.	92	92	51	25	76	67	19	86	69	22	91	70	23	93	62	28	90
<b>Total</b>	<b>1272</b>		<b>854</b>	<b>235</b>	<b>1089</b>	<b>861</b>	<b>235</b>	<b>1096</b>	<b>865</b>	<b>245</b>	<b>1110</b>	<b>908</b>	<b>220</b>	<b>1128</b>	<b>923</b>	<b>244</b>	<b>1167</b>

# 4. Scenario Discussion

## Woolwich and Wellesley Townships Review: Scenario 1



- Details
- Defined Boundary for Three Bridges PS (gets Areas G, I, J)
- St. Jacobs PS gets Areas H, K, L.
- All else remains same

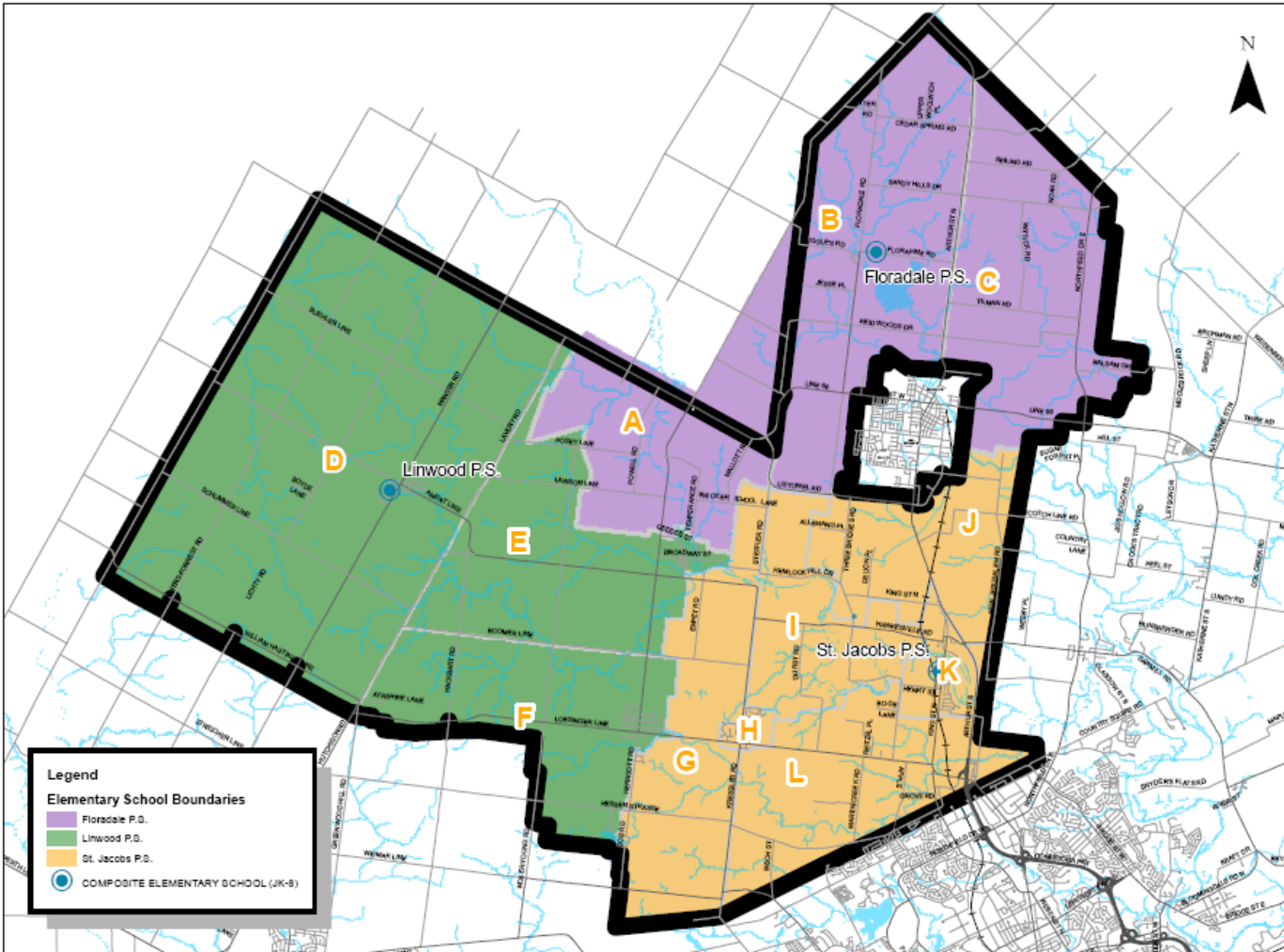
Scenario 1

School	Built Capacity	Capacity with FDK	2012			2014			2016			2018			2020		
			JK-6	7-8	Total	JK-6	7-8	Total	JK-6	7-8	Total	JK-6	7-8	Total	JK-6	7-8	Total
Floradale P.S.	322	322	189	58	245	182	58	240	177	65	242	201	41	242	212	52	264
Linwood P.S.	510	519	359	98	455	389	87	456	381	91	472	397	88	485	400	101	501
St. Jacobs P.S.	348	?	235	57	292	234	69	303	229	67	296	238	58	296	245	62	307
Three Bridges P.S.	92	?	71	28	97	76	21	97	78	22	100	72	33	105	68	29	95
<b>Total</b>	<b>1272</b>		<b>854</b>	<b>235</b>	<b>1089</b>	<b>861</b>	<b>235</b>	<b>1096</b>	<b>865</b>	<b>245</b>	<b>1110</b>	<b>808</b>	<b>220</b>	<b>1128</b>	<b>923</b>	<b>244</b>	<b>1167</b>



# 4. Scenario Discussion

## Woolwich and Wellesley Townships Review: Scenario 2



### • Details

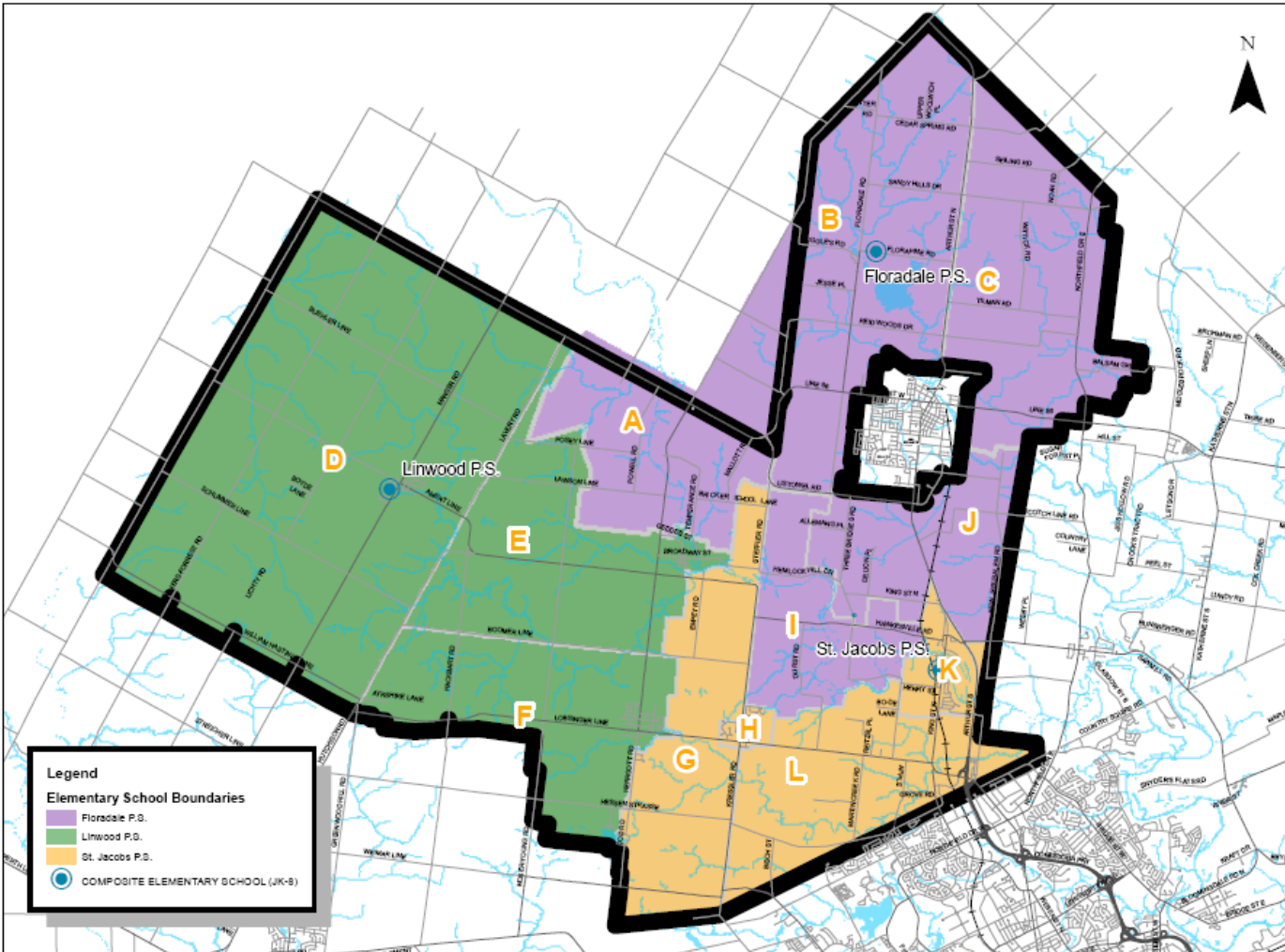
- Three Bridges PS closed. Students directed to St. Jacobs PS
- All else remains same

Scenario 2

School	Built Capacity	Capacity with FDK	2012			2014			2016			2018			2020		
			JK-6	7-8	Total	JK-6	7-8	Total	JK-6	7-8	Total	JK-6	7-8	Total	JK-6	7-8	Total
Floradale P.S.	322	322	189	58	245	182	58	240	177	65	242	201	41	242	212	52	264
Linwood P.S.	510	510	359	98	455	369	87	456	381	91	472	397	88	485	400	101	501
St. Jacobs P.S.	348	?	308	83	389	310	90	400	307	89	396	310	91	401	311	91	402
Three Bridges P.S.	92	92	0	0	0	0	0	0	0	0	0	0	0	0	0	0	0
<b>Total</b>	<b>1180</b>		<b>854</b>	<b>235</b>	<b>1089</b>	<b>861</b>	<b>235</b>	<b>1096</b>	<b>865</b>	<b>245</b>	<b>1110</b>	<b>908</b>	<b>220</b>	<b>1128</b>	<b>923</b>	<b>244</b>	<b>1167</b>

# 4. Scenario Discussion

## Woolwich and Wellesley Townships Review: Scenario 3



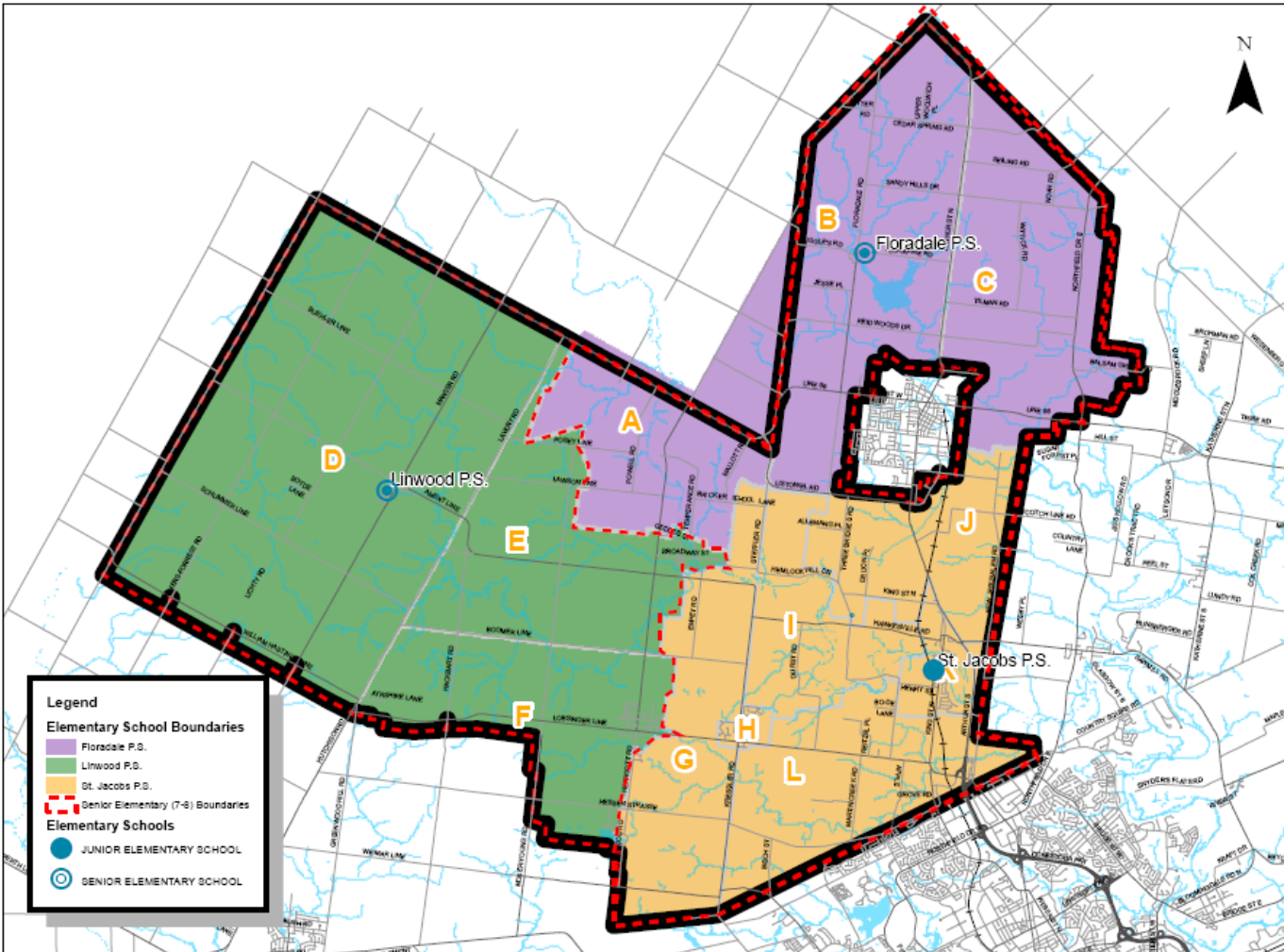
- Details
- Three Bridges PS closed. Students directed to St. Jacobs PS and Floradale PS.
- St. Jacobs PS gets Areas G, H, K, L.
- Floradale PS gets Areas I, J from St. Jacobs PS.

Scenario 3

School	Built Capacity	Capacity with FDK	2012			2014			2016			2018			2020		
			JK-6	7-8	Total	JK-6	7-8	Total	JK-6	7-8	Total	JK-6	7-8	Total	JK-6	7-8	Total
Floradale P.S.	322	322	231	74	305	225	72	297	220	81	301	241	80	301	246	89	315
Linwood P.S.	510	519	359	98	455	369	87	456	381	91	472	397	88	485	400	101	501
St. Jacobs P.S.	348	?	264	65	329	267	78	343	264	73	337	270	72	342	277	74	351
Three Bridges P.S.	92	92	0	0	0	0	0	0	0	0	0	0	0	0	0	0	0
<b>Total</b>	<b>1180</b>		<b>854</b>	<b>235</b>	<b>1089</b>	<b>861</b>	<b>235</b>	<b>1096</b>	<b>865</b>	<b>245</b>	<b>1110</b>	<b>908</b>	<b>220</b>	<b>1128</b>	<b>923</b>	<b>244</b>	<b>1167</b>

# 4. Preliminary Scenario Discussion

## Woolwich and Wellesley Townships Review: Scenario 5



### •Details

•Three Bridges PS closed. JK-6 students directed to St. Jacobs PS. 7-8 students directed to Floradale PS.

•St. Jacobs converts to JK-6. 7-8 students directed to Floradale PS.

•Linwood PS, no change

Scenario 5

School	Built Capacity	Capacity with FDK	2012			2014			2016			2018			2020		
			JK-6	7-8	Total	JK-6	7-8	Total	JK-6	7-8	Total	JK-6	7-8	Total	JK-6	7-8	Total
Floradale P.S.	322	322	170	139	309	177	148	325	176	154	330	201	132	333	212	143	355
Linwood P.S.	510	519	359	98	455	369	87	456	381	91	472	397	88	485	400	101	501
St. Jacobs P.S.	348	?	325	0	325	315	0	315	308	0	308	310	0	310	311	0	311
Three Bridges P.S.	92	92	0	0	0	0	0	0	0	0	0	0	0	0	0	0	0
<b>Total</b>	<b>1180</b>		<b>854</b>	<b>235</b>	<b>1089</b>	<b>861</b>	<b>235</b>	<b>1096</b>	<b>865</b>	<b>245</b>	<b>1110</b>	<b>908</b>	<b>220</b>	<b>1128</b>	<b>923</b>	<b>244</b>	<b>1167</b>

# Woolwich & Wellesley Townships Accommodation Review

### **ARC # 10**

- **Tuesday, March 6, 2012: 6:30- 8:00 p.m.**

### **ARC # 11**

- **Wednesday, March 21, 2012: 6:30- 8:00 p.m.**

### **ARC # 12**

- **Wednesday, April 4, 2012: 6:30- 8:00 p.m.**

### **Public Meeting # 2**

- **March ??????**



## Contact Information

- Website: [www.wrdsb.ca](http://www.wrdsb.ca)
  - » About>Planning>Accommodation Reviews
  - » Woolwich Wellesley Townships Accommodation Review
- E-mail: [boundaryfeedback@wrdsb.on.ca](mailto:boundaryfeedback@wrdsb.on.ca)
- Phone: 519-570-0003 ext. 4419

